



# Full wwPDB X-ray Structure Validation Report ⓘ

May 15, 2020 – 02:43 am BST

PDB ID : 2V7B  
Title : Crystal structures of a benzoate CoA ligase from Burkholderia xenovorans LB400  
Authors : J Boulanger, M.; Bains, J.  
Deposited on : 2007-07-27  
Resolution : 1.84 Å(reported)

This is a Full wwPDB X-ray Structure Validation Report for a publicly released PDB entry.

We welcome your comments at [validation@mail.wwpdb.org](mailto:validation@mail.wwpdb.org)

A user guide is available at

<https://www.wwpdb.org/validation/2017/XrayValidationReportHelp>

with specific help available everywhere you see the ⓘ symbol.

---

The following versions of software and data (see [references ⓘ](#)) were used in the production of this report:

MolProbity : 4.02b-467  
Mogul : 1.8.5 (274361), CSD as541be (2020)  
Xtriage (Phenix) : 1.13  
EDS : 2.11  
Percentile statistics : 20191225.v01 (using entries in the PDB archive December 25th 2019)  
Refmac : 5.8.0158  
CCP4 : 7.0.044 (Gargrove)  
Ideal geometry (proteins) : Engh & Huber (2001)  
Ideal geometry (DNA, RNA) : Parkinson et al. (1996)  
Validation Pipeline (wwPDB-VP) : 2.11

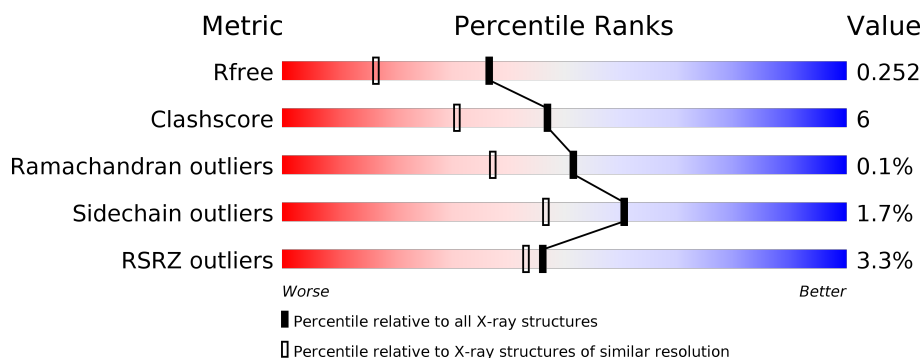
# 1 Overall quality at a glance

The following experimental techniques were used to determine the structure:

## *X-RAY DIFFRACTION*

The reported resolution of this entry is 1.84 Å.

Percentile scores (ranging between 0-100) for global validation metrics of the entry are shown in the following graphic. The table shows the number of entries on which the scores are based.



Metric	Whole archive (#Entries)	Similar resolution (#Entries, resolution range(Å))
$R_{free}$	130704	4003 (1.86-1.82)
Clashscore	141614	4233 (1.86-1.82)
Ramachandran outliers	138981	4185 (1.86-1.82)
Sidechain outliers	138945	4186 (1.86-1.82)
RSRZ outliers	127900	3957 (1.86-1.82)

The table below summarises the geometric issues observed across the polymeric chains and their fit to the electron density. The red, orange, yellow and green segments on the lower bar indicate the fraction of residues that contain outliers for  $\geq 3$ , 2, 1 and 0 types of geometric quality criteria respectively. A grey segment represents the fraction of residues that are not modelled. The numeric value for each fraction is indicated below the corresponding segment, with a dot representing fractions  $\leq 5\%$ . The upper red bar (where present) indicates the fraction of residues that have poor fit to the electron density. The numeric value is given above the bar.

Mol	Chain	Length	Quality of chain
1	A	529	<div> <div>3%</div> <div> <div></div> <div>82%</div> <div>9%</div> <div>8%</div> </div> </div>
1	B	529	<div> <div>3%</div> <div> <div></div> <div>82%</div> <div>9%</div> <div>8%</div> </div> </div>

## 2 Entry composition [i](#)

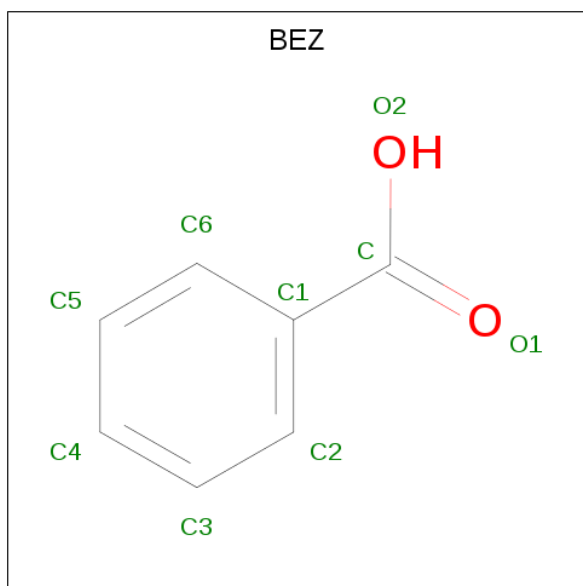
There are 3 unique types of molecules in this entry. The entry contains 8600 atoms, of which 0 are hydrogens and 0 are deuteriums.

In the tables below, the ZeroOcc column contains the number of atoms modelled with zero occupancy, the AltConf column contains the number of residues with at least one atom in alternate conformation and the Trace column contains the number of residues modelled with at most 2 atoms.

- Molecule 1 is a protein called BENZOATE-COENZYME A LIGASE.

Mol	Chain	Residues	Atoms					ZeroOcc	AltConf	Trace
1	A	489	Total	C	N	O	S	0	0	0
			3760	2416	641	689	14			
1	B	489	Total	C	N	O	S	0	0	0
			3760	2416	641	689	14			

- Molecule 2 is BENZOIC ACID (three-letter code: BEZ) (formula:  $C_7H_6O_2$ ).



Mol	Chain	Residues	Atoms			ZeroOcc	AltConf
2	A	1	Total	C	O	0	0
			9	7	2		
2	B	1	Total	C	O	0	0
			9	7	2		

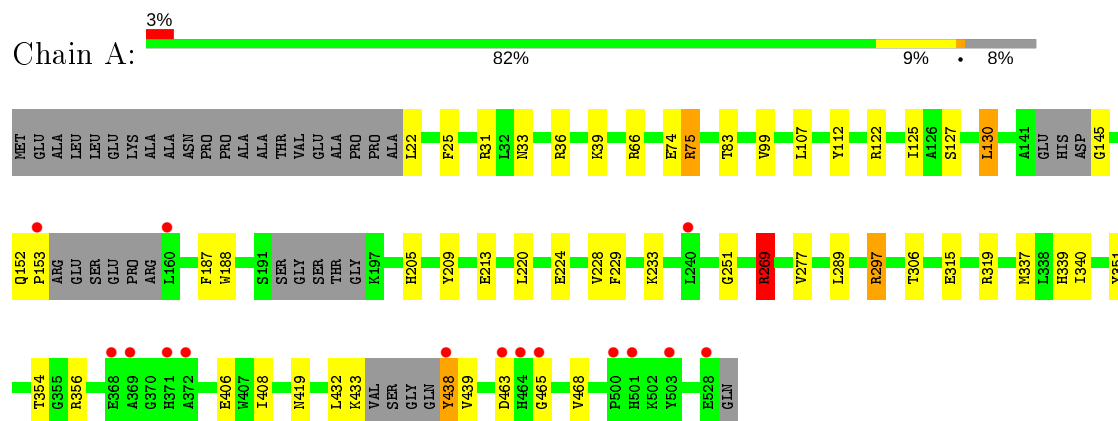
- Molecule 3 is water.

Mol	Chain	Residues	Atoms		ZeroOcc	AltConf
3	A	547	Total 547	O 547	0	0
3	B	515	Total 515	O 515	0	0

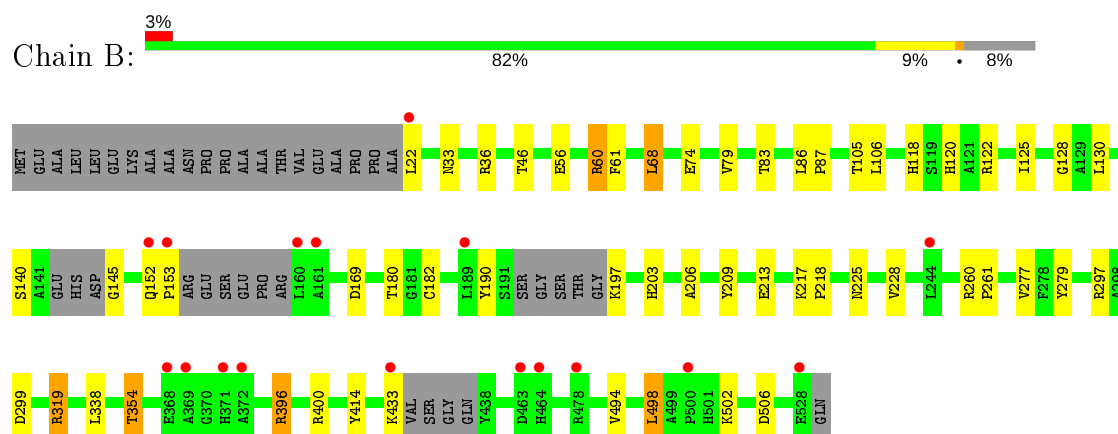
### 3 Residue-property plots [i](#)

These plots are drawn for all protein, RNA and DNA chains in the entry. The first graphic for a chain summarises the proportions of the various outlier classes displayed in the second graphic. The second graphic shows the sequence view annotated by issues in geometry and electron density. Residues are color-coded according to the number of geometric quality criteria for which they contain at least one outlier: green = 0, yellow = 1, orange = 2 and red = 3 or more. A red dot above a residue indicates a poor fit to the electron density ( $RSRZ > 2$ ). Stretches of 2 or more consecutive residues without any outlier are shown as a green connector. Residues present in the sample, but not in the model, are shown in grey.

#### • Molecule 1: BENZOATE-COENZYME A LIGASE



#### • Molecule 1: BENZOATE-COENZYME A LIGASE



## 4 Data and refinement statistics

Property	Value	Source
Space group	P 1	Depositor
Cell constants a, b, c, $\alpha$ , $\beta$ , $\gamma$	74.55Å 74.55Å 89.90Å 70.06° 79.95° 81.11°	Depositor
Resolution (Å)	36.66 – 1.84 36.65 – 1.84	Depositor EDS
% Data completeness (in resolution range)	92.3 (36.66-1.84) 92.3 (36.65-1.84)	Depositor EDS
$R_{merge}$	0.08	Depositor
$R_{sym}$	(Not available)	Depositor
$\langle I/\sigma(I) \rangle$ <sup>1</sup>	1.74 (at 1.84Å)	Xtriage
Refinement program	REFMAC 5.2.0019	Depositor
R, $R_{free}$	0.221 , 0.252 0.221 , 0.252	Depositor DCC
$R_{free}$ test set	7152 reflections (5.04%)	wwPDB-VP
Wilson B-factor (Å <sup>2</sup> )	25.9	Xtriage
Anisotropy	0.082	Xtriage
Bulk solvent $k_{sol}$ (e/Å <sup>3</sup> ), $B_{sol}$ (Å <sup>2</sup> )	0.37 , 48.2	EDS
L-test for twinning <sup>2</sup>	$\langle  L  \rangle = 0.51$ , $\langle L^2 \rangle = 0.34$	Xtriage
Estimated twinning fraction	No twinning to report.	Xtriage
$F_o, F_c$ correlation	0.94	EDS
Total number of atoms	8600	wwPDB-VP
Average B, all atoms (Å <sup>2</sup> )	27.0	wwPDB-VP

Xtriage's analysis on translational NCS is as follows: *The largest off-origin peak in the Patterson function is 9.85% of the height of the origin peak. No significant pseudotranslation is detected.*

<sup>1</sup>Intensities estimated from amplitudes.

<sup>2</sup>Theoretical values of  $\langle |L| \rangle$ ,  $\langle L^2 \rangle$  for acentric reflections are 0.5, 0.333 respectively for untwinned datasets, and 0.375, 0.2 for perfectly twinned datasets.

## 5 Model quality [i](#)

### 5.1 Standard geometry [i](#)

Bond lengths and bond angles in the following residue types are not validated in this section: BEZ

The Z score for a bond length (or angle) is the number of standard deviations the observed value is removed from the expected value. A bond length (or angle) with  $|Z| > 5$  is considered an outlier worth inspection. RMSZ is the root-mean-square of all Z scores of the bond lengths (or angles).

Mol	Chain	Bond lengths		Bond angles	
		RMSZ	# $ Z  > 5$	RMSZ	# $ Z  > 5$
1	A	0.88	2/3844 (0.1%)	0.87	9/5228 (0.2%)
1	B	0.82	0/3844	0.77	4/5228 (0.1%)
All	All	0.85	2/7688 (0.0%)	0.82	13/10456 (0.1%)

All (2) bond length outliers are listed below:

Mol	Chain	Res	Type	Atoms	Z	Observed(Å)	Ideal(Å)
1	A	75	ARG	CB-CG	7.57	1.73	1.52
1	A	75	ARG	CZ-NH1	5.72	1.40	1.33

All (13) bond angle outliers are listed below:

Mol	Chain	Res	Type	Atoms	Z	Observed(°)	Ideal(°)
1	A	75	ARG	NE-CZ-NH2	-13.81	113.39	120.30
1	A	75	ARG	NE-CZ-NH1	13.60	127.10	120.30
1	A	269	ARG	NE-CZ-NH1	12.39	126.50	120.30
1	A	269	ARG	NE-CZ-NH2	-11.83	114.39	120.30
1	A	297	ARG	NE-CZ-NH1	-8.40	116.10	120.30
1	B	60	ARG	NE-CZ-NH2	-6.75	116.93	120.30
1	B	60	ARG	NE-CZ-NH1	6.36	123.48	120.30
1	A	269	ARG	CD-NE-CZ	6.28	132.39	123.60
1	B	396	ARG	NE-CZ-NH2	-6.21	117.19	120.30
1	B	68	LEU	CA-CB-CG	6.17	129.49	115.30
1	A	297	ARG	NE-CZ-NH2	5.92	123.26	120.30
1	A	269	ARG	CG-CD-NE	-5.67	99.90	111.80
1	A	75	ARG	CD-NE-CZ	5.36	131.11	123.60

There are no chirality outliers.

There are no planarity outliers.

## 5.2 Too-close contacts ⓘ

In the following table, the Non-H and H(model) columns list the number of non-hydrogen atoms and hydrogen atoms in the chain respectively. The H(added) column lists the number of hydrogen atoms added and optimized by MolProbity. The Clashes column lists the number of clashes within the asymmetric unit, whereas Symm-Clashes lists symmetry related clashes.

Mol	Chain	Non-H	H(model)	H(added)	Clashes	Symm-Clashes
1	A	3760	0	3757	51	1
1	B	3760	0	3757	44	1
2	A	9	0	5	0	0
2	B	9	0	5	0	0
3	A	547	0	0	13	0
3	B	515	0	0	12	0
All	All	8600	0	7524	94	1

The all-atom clashscore is defined as the number of clashes found per 1000 atoms (including hydrogen atoms). The all-atom clashscore for this structure is 6.

All (94) close contacts within the same asymmetric unit are listed below, sorted by their clash magnitude.

Atom-1	Atom-2	Interatomic distance (Å)	Clash overlap (Å)
1:B:22:LEU:HA	3:B:2002:HOH:O	1.39	1.21
1:A:22:LEU:HD22	3:A:2206:HOH:O	1.45	1.17
1:B:319:ARG:HG3	1:B:319:ARG:HH11	1.01	1.08
1:A:233:LYS:HE3	3:A:2258:HOH:O	0.86	1.03
1:B:319:ARG:CG	1:B:319:ARG:HH11	1.78	0.96
1:B:319:ARG:HG3	1:B:319:ARG:NH1	1.75	0.95
1:A:22:LEU:CD2	3:A:2206:HOH:O	2.06	0.91
1:A:433:LYS:HD2	1:A:438:TYR:CD2	2.10	0.86
1:A:33:ASN:HD22	1:A:36:ARG:HH11	1.27	0.81
1:A:39:LYS:HE3	1:A:251:GLY:O	1.81	0.81
1:A:83:THR:HG21	1:A:153:PRO:HB3	1.62	0.80
1:B:79:VAL:HG12	1:B:130:LEU:HD22	1.64	0.80
1:B:354:THR:HG21	1:B:414:TYR:OH	1.83	0.79
1:B:297:ARG:HD3	3:B:2299:HOH:O	1.83	0.78
1:B:145:GLY:N	3:B:2165:HOH:O	2.17	0.76
1:A:438:TYR:CD1	1:A:439:VAL:HG23	2.20	0.76
1:B:498:LEU:HD13	1:B:502:LYS:HB2	1.69	0.75
1:A:25:PHE:H	1:A:205:HIS:CD2	2.04	0.74
1:A:25:PHE:H	1:A:205:HIS:HD2	1.37	0.73
1:A:75:ARG:HD2	1:A:99:VAL:HB	1.70	0.73
1:A:438:TYR:N	3:A:2459:HOH:O	2.22	0.72

*Continued on next page...*

*Continued from previous page...*

Atom-1	Atom-2	Interatomic distance (Å)	Clash overlap (Å)
1:B:33:ASN:HD22	1:B:36:ARG:HH11	1.34	0.72
1:B:83:THR:HG21	1:B:153:PRO:HB2	1.71	0.71
1:A:433:LYS:HD2	1:A:438:TYR:HD2	1.54	0.71
1:A:31:ARG:HD3	3:A:2006:HOH:O	1.90	0.70
1:A:233:LYS:CE	3:A:2258:HOH:O	1.69	0.68
1:B:197:LYS:N	3:B:2222:HOH:O	2.26	0.67
1:B:153:PRO:HD3	3:B:2173:HOH:O	1.94	0.66
1:A:339:HIS:CD2	1:A:340:ILE:H	2.16	0.64
1:B:153:PRO:HB3	3:B:2171:HOH:O	1.96	0.63
1:B:494:VAL:HG12	1:B:498:LEU:HD11	1.79	0.63
1:A:66:ARG:HH11	1:A:66:ARG:HG3	1.64	0.63
1:B:433:LYS:C	3:B:2423:HOH:O	2.38	0.62
1:B:79:VAL:CG1	1:B:130:LEU:HD22	2.29	0.62
1:A:152:GLN:OE1	1:A:152:GLN:HA	2.00	0.60
1:A:39:LYS:HE2	1:A:224:GLU:OE2	2.01	0.60
1:A:438:TYR:CE1	1:A:439:VAL:HG23	2.38	0.58
1:B:120:HIS:CD2	3:B:2094:HOH:O	2.56	0.58
1:B:61:PHE:HZ	1:B:125:ILE:HD11	1.70	0.57
1:A:356:ARG:NH2	1:A:419:ASN:O	2.39	0.55
1:A:337:MET:SD	1:A:408:ILE:HD12	2.46	0.55
1:A:438:TYR:HD1	1:A:439:VAL:HG23	1.70	0.54
1:B:128:GLY:HA3	3:B:2173:HOH:O	2.07	0.54
1:A:125:ILE:HD12	1:A:125:ILE:N	2.22	0.54
1:B:83:THR:HG21	1:B:153:PRO:CB	2.37	0.54
1:A:224:GLU:HG3	3:A:2020:HOH:O	2.07	0.53
1:B:152:GLN:HA	3:B:2173:HOH:O	2.08	0.53
1:B:86:LEU:HB3	1:B:87:PRO:HD3	1.90	0.52
1:A:153:PRO:HD2	3:A:2169:HOH:O	2.07	0.52
1:A:228:VAL:HG12	1:A:277:VAL:HB	1.92	0.52
1:B:228:VAL:HG12	1:B:277:VAL:HB	1.91	0.52
1:B:61:PHE:CZ	1:B:125:ILE:HD11	2.44	0.51
1:A:351:TYR:HB2	3:A:2327:HOH:O	2.11	0.51
1:A:432:LEU:O	1:A:438:TYR:N	2.44	0.51
1:A:75:ARG:HH21	1:A:188:TRP:HE1	1.59	0.51
1:A:66:ARG:CG	1:A:66:ARG:HH11	2.23	0.50
1:A:433:LYS:C	1:A:438:TYR:CE2	2.85	0.49
1:B:260:ARG:HG3	1:B:261:PRO:HD2	1.93	0.49
1:B:106:LEU:HD11	1:B:260:ARG:HH12	1.77	0.49
1:A:33:ASN:ND2	1:A:36:ARG:HH11	2.04	0.49
1:B:56:GLU:OE2	1:B:60:ARG:HD2	2.13	0.48
1:A:31:ARG:NH2	3:A:2007:HOH:O	2.47	0.47

*Continued on next page...*

*Continued from previous page...*

Atom-1	Atom-2	Interatomic distance (Å)	Clash overlap (Å)
1:B:33:ASN:ND2	1:B:36:ARG:HH11	2.10	0.47
1:B:22:LEU:HB2	1:B:180:THR:O	2.15	0.47
1:B:396:ARG:HD2	3:B:2387:HOH:O	2.15	0.46
1:B:105:THR:O	1:B:130:LEU:HD21	2.16	0.46
1:A:315:GLU:O	1:A:319:ARG:HG3	2.15	0.46
1:A:463:ASP:HB2	1:A:468:VAL:HG22	1.98	0.45
1:A:145:GLY:N	3:A:2163:HOH:O	2.49	0.45
1:B:22:LEU:CB	1:B:180:THR:O	2.65	0.45
1:A:107:LEU:HB2	1:A:112:TYR:CZ	2.52	0.45
1:B:118:HIS:HD2	1:B:190:TYR:OH	2.00	0.45
1:A:75:ARG:NH2	1:A:188:TRP:HE1	2.14	0.45
1:A:127:SER:HB2	1:A:130:LEU:HD22	1.99	0.44
1:B:22:LEU:N	1:B:22:LEU:HD12	2.33	0.43
1:A:153:PRO:HG3	3:A:2167:HOH:O	2.18	0.43
1:A:339:HIS:HD2	1:A:340:ILE:H	1.64	0.43
1:A:406:GLU:HG3	1:B:400:ARG:HB3	1.99	0.43
1:A:205:HIS:HE1	3:A:2216:HOH:O	2.00	0.43
1:A:209:TYR:CZ	1:A:213:GLU:HG3	2.53	0.43
1:A:220:LEU:HD13	1:A:306:THR:CG2	2.49	0.42
1:A:152:GLN:HA	1:A:153:PRO:HD3	1.65	0.42
1:A:229:PHE:CZ	1:A:269:ARG:HG3	2.55	0.42
1:B:203:HIS:CE1	1:B:338:LEU:HB2	2.54	0.42
1:B:299:ASP:OD2	3:B:2301:HOH:O	2.20	0.42
1:B:182:CYS:HB3	1:B:206:ALA:HB2	2.01	0.42
1:A:99:VAL:HG13	1:A:187:PHE:HA	2.03	0.41
1:A:297:ARG:HH11	1:A:297:ARG:HD2	1.57	0.41
1:B:74:GLU:HB3	1:B:122:ARG:HG2	2.02	0.41
1:B:217:LYS:HB2	1:B:218:PRO:HD3	2.03	0.41
1:A:74:GLU:HB3	1:A:122:ARG:HG2	2.02	0.41
1:B:60:ARG:NH2	1:B:169:ASP:O	2.54	0.40
1:B:209:TYR:CZ	1:B:213:GLU:HG3	2.56	0.40
1:B:433:LYS:HB3	1:B:433:LYS:HE3	1.60	0.40

All (1) symmetry-related close contacts are listed below. The label for Atom-2 includes the symmetry operator and encoded unit-cell translations to be applied.

Atom-1	Atom-2	Interatomic distance (Å)	Clash overlap (Å)
1:A:297:ARG:NH1	1:B:225:ASN:O[1_554]	2.08	0.12

## 5.3 Torsion angles [i](#)

### 5.3.1 Protein backbone [i](#)

In the following table, the Percentiles column shows the percent Ramachandran outliers of the chain as a percentile score with respect to all X-ray entries followed by that with respect to entries of similar resolution.

The Analysed column shows the number of residues for which the backbone conformation was analysed, and the total number of residues.

Mol	Chain	Analysed	Favoured	Allowed	Outliers	Percentiles	
1	A	479/529 (90%)	464 (97%)	14 (3%)	1 (0%)	47	33
1	B	479/529 (90%)	469 (98%)	10 (2%)	0	100	100
All	All	958/1058 (90%)	933 (97%)	24 (2%)	1 (0%)	51	37

All (1) Ramachandran outliers are listed below:

Mol	Chain	Res	Type
1	A	465	GLY

### 5.3.2 Protein sidechains [i](#)

In the following table, the Percentiles column shows the percent sidechain outliers of the chain as a percentile score with respect to all X-ray entries followed by that with respect to entries of similar resolution.

The Analysed column shows the number of residues for which the sidechain conformation was analysed, and the total number of residues.

Mol	Chain	Analysed	Rotameric	Outliers	Percentiles	
1	A	386/416 (93%)	381 (99%)	5 (1%)	69	58
1	B	386/416 (93%)	378 (98%)	8 (2%)	53	38
All	All	772/832 (93%)	759 (98%)	13 (2%)	60	47

All (13) residues with a non-rotameric sidechain are listed below:

Mol	Chain	Res	Type
1	A	130	LEU
1	A	269	ARG
1	A	289	LEU
1	A	354	THR
1	A	438	TYR

*Continued on next page...*

*Continued from previous page...*

Mol	Chain	Res	Type
1	B	46	THR
1	B	68	LEU
1	B	140	SER
1	B	279	TYR
1	B	319	ARG
1	B	354	THR
1	B	498	LEU
1	B	506	ASP

Some sidechains can be flipped to improve hydrogen bonding and reduce clashes. All (8) such sidechains are listed below:

Mol	Chain	Res	Type
1	A	33	ASN
1	A	205	HIS
1	A	339	HIS
1	A	464	HIS
1	B	33	ASN
1	B	118	HIS
1	B	133	ASN
1	B	293	ASN

### 5.3.3 RNA [i](#)

There are no RNA molecules in this entry.

## 5.4 Non-standard residues in protein, DNA, RNA chains [i](#)

There are no non-standard protein/DNA/RNA residues in this entry.

## 5.5 Carbohydrates [i](#)

There are no carbohydrates in this entry.

## 5.6 Ligand geometry [i](#)

2 ligands are modelled in this entry.

In the following table, the Counts columns list the number of bonds (or angles) for which Mogul statistics could be retrieved, the number of bonds (or angles) that are observed in the model and

the number of bonds (or angles) that are defined in the Chemical Component Dictionary. The Link column lists molecule types, if any, to which the group is linked. The Z score for a bond length (or angle) is the number of standard deviations the observed value is removed from the expected value. A bond length (or angle) with  $|Z| > 2$  is considered an outlier worth inspection. RMSZ is the root-mean-square of all Z scores of the bond lengths (or angles).

Mol	Type	Chain	Res	Link	Bond lengths			Bond angles		
					Counts	RMSZ	# Z  > 2	Counts	RMSZ	# Z  > 2
2	BEZ	A	1529	-	7,9,9	2.59	1 (14%)	8,11,11	1.13	0
2	BEZ	B	1529	-	7,9,9	2.83	1 (14%)	8,11,11	1.91	3 (37%)

In the following table, the Chirals column lists the number of chiral outliers, the number of chiral centers analysed, the number of these observed in the model and the number defined in the Chemical Component Dictionary. Similar counts are reported in the Torsion and Rings columns. '-' means no outliers of that kind were identified.

Mol	Type	Chain	Res	Link	Chirals	Torsions	Rings
2	BEZ	A	1529	-	-	0/0/4/4	0/1/1/1
2	BEZ	B	1529	-	-	0/0/4/4	0/1/1/1

All (2) bond length outliers are listed below:

Mol	Chain	Res	Type	Atoms	Z	Observed(Å)	Ideal(Å)
2	B	1529	BEZ	C1-C	7.07	1.54	1.47
2	A	1529	BEZ	C1-C	6.68	1.53	1.47

All (3) bond angle outliers are listed below:

Mol	Chain	Res	Type	Atoms	Z	Observed(°)	Ideal(°)
2	B	1529	BEZ	C5-C6-C1	-2.86	116.97	120.56
2	B	1529	BEZ	C4-C3-C2	-2.46	116.45	120.19
2	B	1529	BEZ	C4-C5-C6	2.26	123.63	120.19

There are no chirality outliers.

There are no torsion outliers.

There are no ring outliers.

No monomer is involved in short contacts.

## 5.7 Other polymers ⓘ

There are no such residues in this entry.

## 5.8 Polymer linkage issues ⓘ

There are no chain breaks in this entry.

## 6 Fit of model and data ⓘ

### 6.1 Protein, DNA and RNA chains ⓘ

In the following table, the column labelled ‘#RSRZ> 2’ contains the number (and percentage) of RSRZ outliers, followed by percent RSRZ outliers for the chain as percentile scores relative to all X-ray entries and entries of similar resolution. The OWAB column contains the minimum, median, 95<sup>th</sup> percentile and maximum values of the occupancy-weighted average B-factor per residue. The column labelled ‘Q< 0.9’ lists the number of (and percentage) of residues with an average occupancy less than 0.9.

Mol	Chain	Analysed	<RSRZ>	#RSRZ>2		OWAB(Å <sup>2</sup> )	Q<0.9
1	A	489/529 (92%)	0.02	15 (3%)	49 46	15, 23, 40, 52	0
1	B	489/529 (92%)	0.07	17 (3%)	44 40	14, 24, 42, 51	0
All	All	978/1058 (92%)	0.05	32 (3%)	46 43	14, 24, 41, 52	0

All (32) RSRZ outliers are listed below:

Mol	Chain	Res	Type	RSRZ
1	A	153	PRO	5.8
1	B	464	HIS	5.6
1	B	153	PRO	5.1
1	B	160	LEU	4.7
1	A	464	HIS	4.3
1	A	438	TYR	3.6
1	A	160	LEU	3.6
1	A	465	GLY	3.4
1	B	500	PRO	3.2
1	B	528	GLU	3.2
1	B	369	ALA	3.2
1	B	371	HIS	2.9
1	A	369	ALA	2.9
1	B	368	GLU	2.9
1	A	371	HIS	2.8
1	A	528	GLU	2.8
1	A	372	ALA	2.8
1	A	463	ASP	2.8
1	A	500	PRO	2.6
1	B	161	ALA	2.5
1	A	368	GLU	2.5
1	B	152	GLN	2.4
1	B	189	LEU	2.4
1	A	503	TYR	2.3

*Continued on next page...*

*Continued from previous page...*

Mol	Chain	Res	Type	RSRZ
1	B	478	ARG	2.3
1	A	240	LEU	2.3
1	B	433	LYS	2.1
1	B	463	ASP	2.1
1	A	501	HIS	2.1
1	B	244	LEU	2.1
1	B	372	ALA	2.0
1	B	22	LEU	2.0

## 6.2 Non-standard residues in protein, DNA, RNA chains [i](#)

There are no non-standard protein/DNA/RNA residues in this entry.

## 6.3 Carbohydrates [i](#)

There are no carbohydrates in this entry.

## 6.4 Ligands [i](#)

In the following table, the Atoms column lists the number of modelled atoms in the group and the number defined in the chemical component dictionary. The B-factors column lists the minimum, median, 95<sup>th</sup> percentile and maximum values of B factors of atoms in the group. The column labelled 'Q< 0.9' lists the number of atoms with occupancy less than 0.9.

Mol	Type	Chain	Res	Atoms	RSCC	RSR	B-factors(Å <sup>2</sup> )	Q<0.9
2	BEZ	A	1529	9/9	0.96	0.16	14,16,18,18	0
2	BEZ	B	1529	9/9	0.97	0.18	15,16,19,19	0

## 6.5 Other polymers [i](#)

There are no such residues in this entry.