



wwPDB X-ray Structure Validation Summary Report ⓘ

Sep 13, 2020 – 01:03 PM BST

PDB ID : 3V8G
Title : Crystal structure of an asymmetric trimer of a glutamate transporter homologue (GltPh)
Authors : Verdon, G.; Boudker, O.
Deposited on : 2011-12-22
Resolution : 4.66 Å(reported)

This is a wwPDB X-ray Structure Validation Summary Report for a publicly released PDB entry.

We welcome your comments at validation@mail.wwpdb.org

A user guide is available at

<https://www.wwpdb.org/validation/2017/XrayValidationReportHelp>

with specific help available everywhere you see the ⓘ symbol.

The following versions of software and data (see [references ⓘ](#)) were used in the production of this report:

MolProbity : 4.02b-467
Mogul : 1.8.5 (274361), CSD as541be (2020)
Xtriage (Phenix) : 1.13
EDS : **FAILED**
Percentile statistics : 20191225.v01 (using entries in the PDB archive December 25th 2019)
Ideal geometry (proteins) : Engh & Huber (2001)
Ideal geometry (DNA, RNA) : Parkinson et al. (1996)
Validation Pipeline (wwPDB-VP) : 2.14.4.dev1

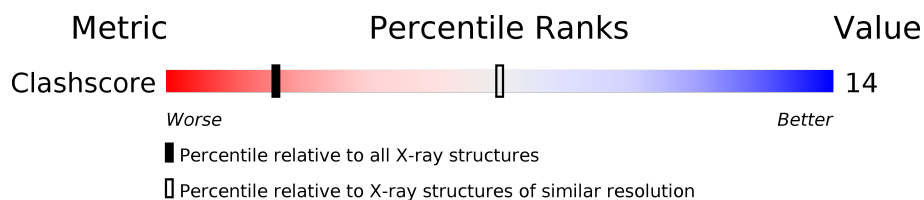
1 Overall quality at a glance

The following experimental techniques were used to determine the structure:

X-RAY DIFFRACTION

The reported resolution of this entry is 4.66 Å.

Percentile scores (ranging between 0-100) for global validation metrics of the entry are shown in the following graphic. The table shows the number of entries on which the scores are based.



Metric	Whole archive (#Entries)	Similar resolution (#Entries, resolution range(Å))
Clashscore	141614	1156 (5.52-3.80)

The table below summarises the geometric issues observed across the polymeric chains and their fit to the electron density. The red, orange, yellow and green segments on the lower bar indicate the fraction of residues that contain outliers for ≥ 3 , 2, 1 and 0 types of geometric quality criteria respectively. A grey segment represents the fraction of residues that are not modelled. The numeric value for each fraction is indicated below the corresponding segment, with a dot representing fractions $\leq 5\%$

Note EDS failed to run properly.

Mol	Chain	Length	Quality of chain
1	A	422	 71% 26% .
1	B	422	 69% 26% .
1	C	422	 58% 37% 5%
1	D	422	 71% 26% .
1	E	422	 71% 25% 5%
1	F	422	 57% 36% 7%

2 Entry composition

There are 3 unique types of molecules in this entry. The entry contains 18038 atoms, of which 0 are hydrogens and 0 are deuteriums.

In the tables below, the ZeroOcc column contains the number of atoms modelled with zero occupancy, the AltConf column contains the number of residues with at least one atom in alternate conformation and the Trace column contains the number of residues modelled with at most 2 atoms.

- Molecule 1 is a protein called sodium-coupled L-aspartate transporter.

Mol	Chain	Residues	Atoms					ZeroOcc	AltConf	Trace
1	A	411	Total	C	N	O	S	0	0	0
			3050	2007	492	533	18			
1	B	404	Total	C	N	O	S	0	0	0
			3001	1976	483	524	18			
1	C	400	Total	C	N	O	S	0	0	0
			2965	1955	475	518	17			
1	D	411	Total	C	N	O	S	0	0	0
			3050	2007	492	533	18			
1	E	403	Total	C	N	O	S	0	0	0
			2992	1971	481	522	18			
1	F	392	Total	C	N	O	S	0	0	0
			2914	1922	465	510	17			

There are 90 discrepancies between the modelled and reference sequences:

Chain	Residue	Modelled	Actual	Comment	Reference
A	37	HIS	ASP	engineered mutation	UNP O59010
A	40	HIS	LYS	engineered mutation	UNP O59010
A	125	HIS	LYS	engineered mutation	UNP O59010
A	132	HIS	LYS	engineered mutation	UNP O59010
A	198	CYS	VAL	engineered mutation	UNP O59010
A	223	HIS	LYS	engineered mutation	UNP O59010
A	264	HIS	LYS	engineered mutation	UNP O59010
A	321	ALA	CYS	engineered mutation	UNP O59010
A	368	HIS	GLU	engineered mutation	UNP O59010
A	380	CYS	ALA	engineered mutation	UNP O59010
A	418	THR	-	EXPRESSION TAG	UNP O59010
A	419	LEU	-	EXPRESSION TAG	UNP O59010
A	420	VAL	-	EXPRESSION TAG	UNP O59010
A	421	PRO	-	EXPRESSION TAG	UNP O59010
A	422	ARG	-	EXPRESSION TAG	UNP O59010
B	37	HIS	ASP	engineered mutation	UNP O59010
B	40	HIS	LYS	engineered mutation	UNP O59010

Continued on next page...

Continued from previous page...

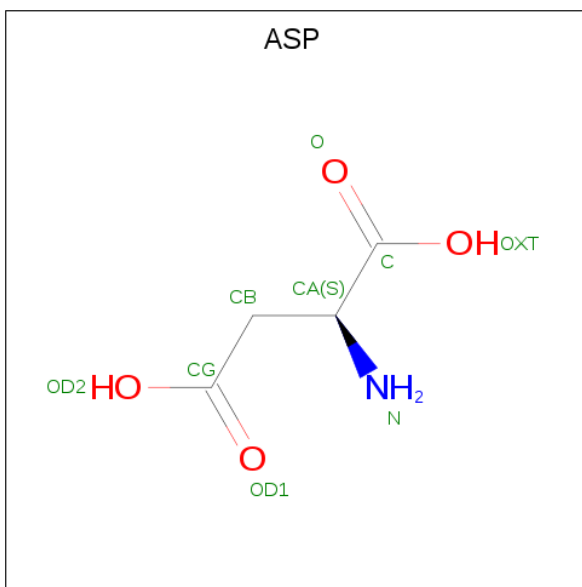
Chain	Residue	Modelled	Actual	Comment	Reference
B	125	HIS	LYS	engineered mutation	UNP O59010
B	132	HIS	LYS	engineered mutation	UNP O59010
B	198	CYS	VAL	engineered mutation	UNP O59010
B	223	HIS	LYS	engineered mutation	UNP O59010
B	264	HIS	LYS	engineered mutation	UNP O59010
B	321	ALA	CYS	engineered mutation	UNP O59010
B	368	HIS	GLU	engineered mutation	UNP O59010
B	380	CYS	ALA	engineered mutation	UNP O59010
B	418	THR	-	EXPRESSION TAG	UNP O59010
B	419	LEU	-	EXPRESSION TAG	UNP O59010
B	420	VAL	-	EXPRESSION TAG	UNP O59010
B	421	PRO	-	EXPRESSION TAG	UNP O59010
B	422	ARG	-	EXPRESSION TAG	UNP O59010
C	37	HIS	ASP	engineered mutation	UNP O59010
C	40	HIS	LYS	engineered mutation	UNP O59010
C	125	HIS	LYS	engineered mutation	UNP O59010
C	132	HIS	LYS	engineered mutation	UNP O59010
C	198	CYS	VAL	engineered mutation	UNP O59010
C	223	HIS	LYS	engineered mutation	UNP O59010
C	264	HIS	LYS	engineered mutation	UNP O59010
C	321	ALA	CYS	engineered mutation	UNP O59010
C	368	HIS	GLU	engineered mutation	UNP O59010
C	380	CYS	ALA	engineered mutation	UNP O59010
C	418	THR	-	EXPRESSION TAG	UNP O59010
C	419	LEU	-	EXPRESSION TAG	UNP O59010
C	420	VAL	-	EXPRESSION TAG	UNP O59010
C	421	PRO	-	EXPRESSION TAG	UNP O59010
C	422	ARG	-	EXPRESSION TAG	UNP O59010
D	37	HIS	ASP	engineered mutation	UNP O59010
D	40	HIS	LYS	engineered mutation	UNP O59010
D	125	HIS	LYS	engineered mutation	UNP O59010
D	132	HIS	LYS	engineered mutation	UNP O59010
D	198	CYS	VAL	engineered mutation	UNP O59010
D	223	HIS	LYS	engineered mutation	UNP O59010
D	264	HIS	LYS	engineered mutation	UNP O59010
D	321	ALA	CYS	engineered mutation	UNP O59010
D	368	HIS	GLU	engineered mutation	UNP O59010
D	380	CYS	ALA	engineered mutation	UNP O59010
D	418	THR	-	EXPRESSION TAG	UNP O59010
D	419	LEU	-	EXPRESSION TAG	UNP O59010
D	420	VAL	-	EXPRESSION TAG	UNP O59010
D	421	PRO	-	EXPRESSION TAG	UNP O59010

Continued on next page...

Continued from previous page...

Chain	Residue	Modelled	Actual	Comment	Reference
D	422	ARG	-	EXPRESSION TAG	UNP O59010
E	37	HIS	ASP	engineered mutation	UNP O59010
E	40	HIS	LYS	engineered mutation	UNP O59010
E	125	HIS	LYS	engineered mutation	UNP O59010
E	132	HIS	LYS	engineered mutation	UNP O59010
E	198	CYS	VAL	engineered mutation	UNP O59010
E	223	HIS	LYS	engineered mutation	UNP O59010
E	264	HIS	LYS	engineered mutation	UNP O59010
E	321	ALA	CYS	engineered mutation	UNP O59010
E	368	HIS	GLU	engineered mutation	UNP O59010
E	380	CYS	ALA	engineered mutation	UNP O59010
E	418	THR	-	EXPRESSION TAG	UNP O59010
E	419	LEU	-	EXPRESSION TAG	UNP O59010
E	420	VAL	-	EXPRESSION TAG	UNP O59010
E	421	PRO	-	EXPRESSION TAG	UNP O59010
E	422	ARG	-	EXPRESSION TAG	UNP O59010
F	37	HIS	ASP	engineered mutation	UNP O59010
F	40	HIS	LYS	engineered mutation	UNP O59010
F	125	HIS	LYS	engineered mutation	UNP O59010
F	132	HIS	LYS	engineered mutation	UNP O59010
F	198	CYS	VAL	engineered mutation	UNP O59010
F	223	HIS	LYS	engineered mutation	UNP O59010
F	264	HIS	LYS	engineered mutation	UNP O59010
F	321	ALA	CYS	engineered mutation	UNP O59010
F	368	HIS	GLU	engineered mutation	UNP O59010
F	380	CYS	ALA	engineered mutation	UNP O59010
F	418	THR	-	EXPRESSION TAG	UNP O59010
F	419	LEU	-	EXPRESSION TAG	UNP O59010
F	420	VAL	-	EXPRESSION TAG	UNP O59010
F	421	PRO	-	EXPRESSION TAG	UNP O59010
F	422	ARG	-	EXPRESSION TAG	UNP O59010

- Molecule 2 is ASPARTIC ACID (three-letter code: ASP) (formula: C₄H₇NO₄).



Mol	Chain	Residues	Atoms				ZeroOcc	AltConf
2	A	1	Total	C	N	O	0	0
			9	4	1	4		
2	B	1	Total	C	N	O	0	0
			9	4	1	4		
2	C	1	Total	C	N	O	0	0
			9	4	1	4		
2	D	1	Total	C	N	O	0	0
			9	4	1	4		
2	E	1	Total	C	N	O	0	0
			9	4	1	4		
2	F	1	Total	C	N	O	0	0
			9	4	1	4		

- Molecule 3 is SODIUM ION (three-letter code: NA) (formula: Na).

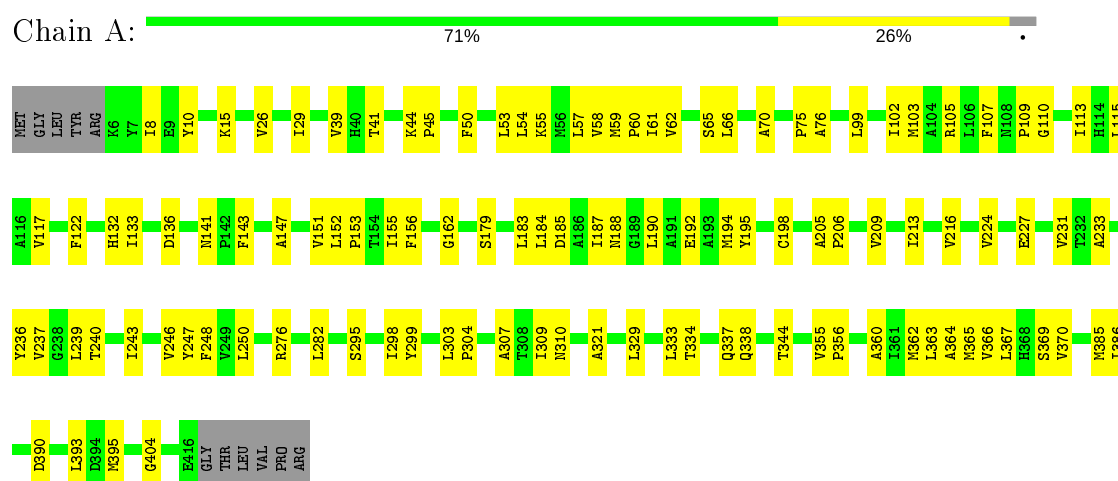
Mol	Chain	Residues	Atoms		ZeroOcc	AltConf
3	D	2	Total	Na	0	0
			2	2		
3	E	2	Total	Na	0	0
			2	2		
3	B	2	Total	Na	0	0
			2	2		
3	C	2	Total	Na	0	0
			2	2		
3	A	2	Total	Na	0	0
			2	2		
3	F	2	Total	Na	0	0
			2	2		

3 Residue-property plots [i](#)

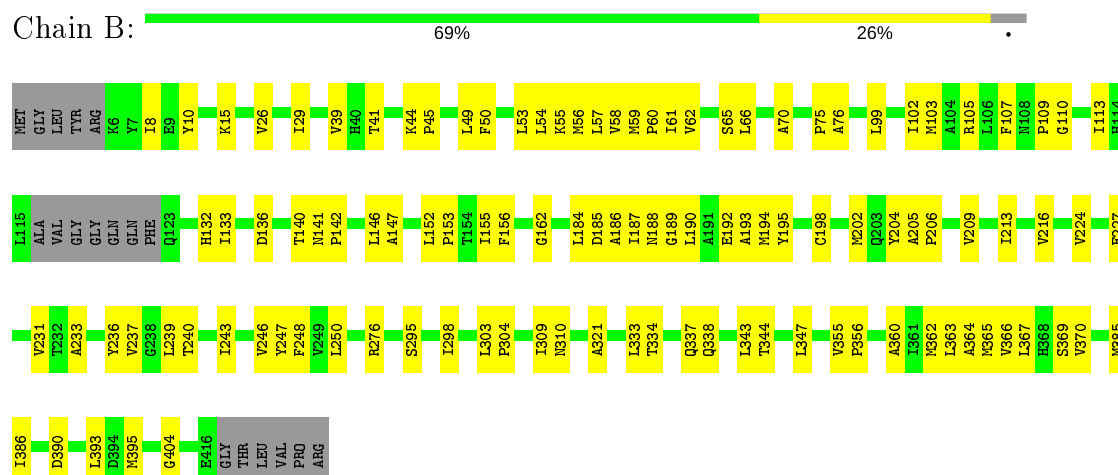
These plots are drawn for all protein, RNA, DNA and oligosaccharide chains in the entry. The first graphic for a chain summarises the proportions of the various outlier classes displayed in the second graphic. The second graphic shows the sequence view annotated by issues in geometry. Residues are color-coded according to the number of geometric quality criteria for which they contain at least one outlier: green = 0, yellow = 1, orange = 2 and red = 3 or more. Stretches of 2 or more consecutive residues without any outlier are shown as a green connector. Residues present in the sample, but not in the model, are shown in grey.

Note EDS failed to run properly.

- Molecule 1: sodium-coupled L-aspartate transporter

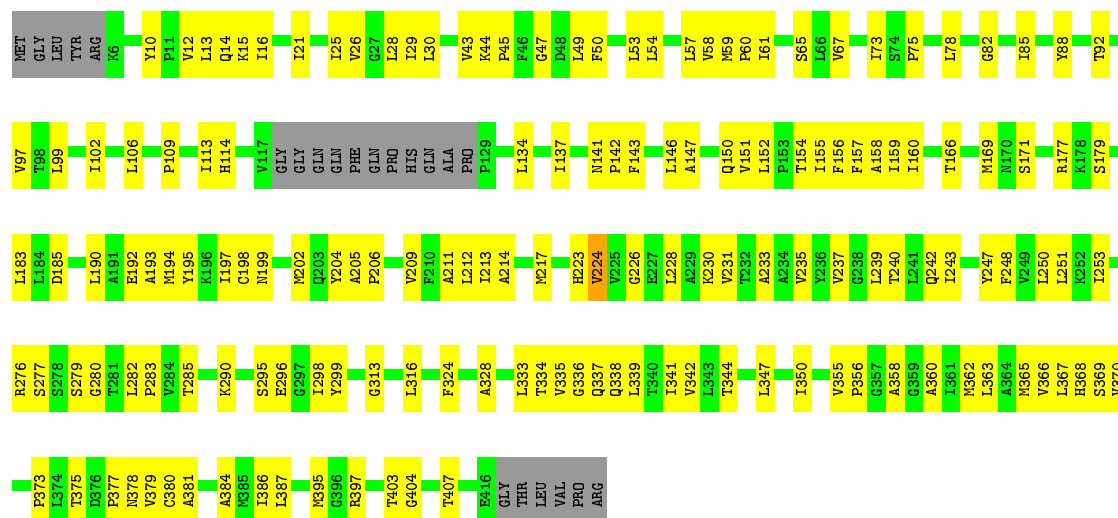


- Molecule 1: sodium-coupled L-aspartate transporter



- Molecule 1: sodium-coupled L-aspartate transporter





- Molecule 1: sodium-coupled L-aspartate transporter

Chain D: 71% 26%

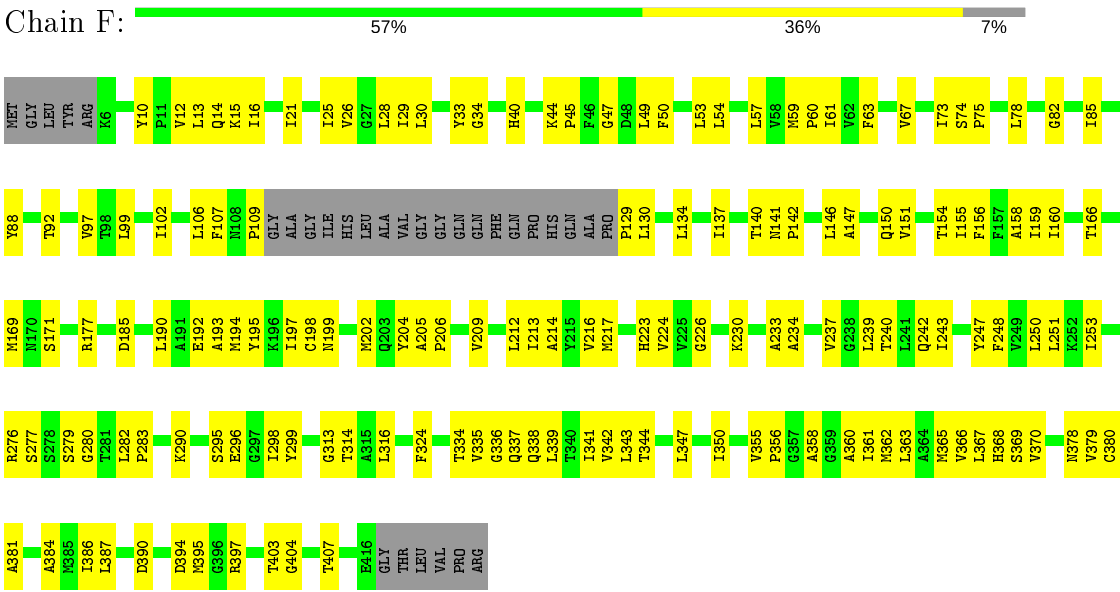


- Molecule 1: sodium-coupled L-aspartate transporter

Chain E: 71% 25% 5%



- Molecule 1: sodium-coupled L-aspartate transporter



4 Data and refinement statistics

EDS failed to run properly - this section is therefore incomplete.

Property	Value	Source
Space group	C 1 2 1	Depositor
Cell constants a, b, c, α , β , γ	203.69Å 119.63Å 223.41Å 90.00° 113.77° 90.00°	Depositor
Resolution (Å)	15.00 – 4.66	Depositor
% Data completeness (in resolution range)	73.1 (15.00-4.66)	Depositor
R_{merge}	(Not available)	Depositor
R_{sym}	(Not available)	Depositor
$\langle I/\sigma(I) \rangle$ ¹	2.67 (at 4.65Å)	Xtriage
Refinement program	REFMAC 5.5.0109	Depositor
R, R_{free}	0.255 , 0.294	Depositor
Wilson B-factor (Å ²)	255.4	Xtriage
Anisotropy	0.256	Xtriage
L-test for twinning ²	$\langle L \rangle = 0.39$, $\langle L^2 \rangle = 0.22$	Xtriage
Estimated twinning fraction	No twinning to report.	Xtriage
Total number of atoms	18038	wwPDB-VP
Average B, all atoms (Å ²)	283.0	wwPDB-VP

Xtriage's analysis on translational NCS is as follows: *The largest off-origin peak in the Patterson function is 5.61% of the height of the origin peak. No significant pseudotranslation is detected.*

¹Intensities estimated from amplitudes.

²Theoretical values of $\langle |L| \rangle$, $\langle L^2 \rangle$ for acentric reflections are 0.5, 0.333 respectively for untwinned datasets, and 0.375, 0.2 for perfectly twinned datasets.

5 Model quality

5.1 Standard geometry

Bond lengths and bond angles in the following residue types are not validated in this section:
NA

The Z score for a bond length (or angle) is the number of standard deviations the observed value is removed from the expected value. A bond length (or angle) with $|Z| > 5$ is considered an outlier worth inspection. RMSZ is the root-mean-square of all Z scores of the bond lengths (or angles).

Mol	Chain	Bond lengths		Bond angles	
		RMSZ	$\# Z > 5$	RMSZ	$\# Z > 5$
1	A	0.37	0/3110	0.54	0/4241
1	B	0.37	0/3059	0.53	0/4171
1	C	0.41	0/3020	0.61	0/4116
1	D	0.37	0/3110	0.53	0/4241
1	E	0.37	0/3050	0.53	0/4158
1	F	0.40	0/2968	0.60	0/4045
All	All	0.38	0/18317	0.56	0/24972

Chiral center outliers are detected by calculating the chiral volume of a chiral center and verifying if the center is modelled as a planar moiety or with the opposite hand. A planarity outlier is detected by checking planarity of atoms in a peptide group, atoms in a mainchain group or atoms of a sidechain that are expected to be planar.

Mol	Chain	#Chirality outliers	#Planarity outliers
1	C	0	2
1	F	0	2
All	All	0	4

There are no bond length outliers.

There are no bond angle outliers.

There are no chirality outliers.

All (4) planarity outliers are listed below:

Mol	Chain	Res	Type	Group
1	C	223	HIS	Peptide
1	C	224	VAL	Peptide
1	F	223	HIS	Peptide
1	F	224	VAL	Peptide

5.2 Too-close contacts ⓘ

In the following table, the Non-H and H(model) columns list the number of non-hydrogen atoms and hydrogen atoms in the chain respectively. The H(added) column lists the number of hydrogen atoms added and optimized by MolProbity. The Clashes column lists the number of clashes within the asymmetric unit, whereas Symm-Clashes lists symmetry related clashes.

Mol	Chain	Non-H	H(model)	H(added)	Clashes	Symm-Clashes
1	A	3050	0	3223	81	0
1	B	3001	0	3177	79	0
1	C	2965	0	3147	129	0
1	D	3050	0	3223	82	0
1	E	2992	0	3170	74	0
1	F	2914	0	3093	121	0
2	A	9	0	3	0	0
2	B	9	0	3	0	0
2	C	9	0	3	0	0
2	D	9	0	3	0	0
2	E	9	0	3	0	0
2	F	9	0	3	0	0
3	A	2	0	0	0	0
3	B	2	0	0	0	0
3	C	2	0	0	0	0
3	D	2	0	0	0	0
3	E	2	0	0	0	0
3	F	2	0	0	0	0
All	All	18038	0	19051	532	0

The all-atom clashscore is defined as the number of clashes found per 1000 atoms (including hydrogen atoms). The all-atom clashscore for this structure is 14.

The worst 5 of 532 close contacts within the same asymmetric unit are listed below, sorted by their clash magnitude.

Atom-1	Atom-2	Interatomic distance (Å)	Clash overlap (Å)
1:D:243:ILE:HA	1:D:247:TYR:HD2	1.30	0.96
1:E:243:ILE:HA	1:E:247:TYR:HD2	1.30	0.95
1:B:243:ILE:HA	1:B:247:TYR:HD2	1.29	0.95
1:A:243:ILE:HA	1:A:247:TYR:HD2	1.31	0.92
1:C:134:LEU:O	1:C:137:ILE:HG12	1.71	0.90

There are no symmetry-related clashes.

5.3 Torsion angles [i](#)

5.3.1 Protein backbone [i](#)

There are no protein backbone outliers to report in this entry.

5.3.2 Protein sidechains [i](#)

There are no protein residues with a non-rotameric sidechain to report in this entry.

5.3.3 RNA [i](#)

There are no RNA molecules in this entry.

5.4 Non-standard residues in protein, DNA, RNA chains [i](#)

There are no non-standard protein/DNA/RNA residues in this entry.

5.5 Carbohydrates [i](#)

There are no monosaccharides in this entry.

5.6 Ligand geometry [i](#)

Of 18 ligands modelled in this entry, 12 are monoatomic - leaving 6 for Mogul analysis.

In the following table, the Counts columns list the number of bonds (or angles) for which Mogul statistics could be retrieved, the number of bonds (or angles) that are observed in the model and the number of bonds (or angles) that are defined in the Chemical Component Dictionary. The Link column lists molecule types, if any, to which the group is linked. The Z score for a bond length (or angle) is the number of standard deviations the observed value is removed from the expected value. A bond length (or angle) with $|Z| > 2$ is considered an outlier worth inspection. RMSZ is the root-mean-square of all Z scores of the bond lengths (or angles).

Mol	Type	Chain	Res	Link	Bond lengths			Bond angles		
					Counts	RMSZ	$\# Z > 2$	Counts	RMSZ	$\# Z > 2$
2	ASP	A	501	-	2,8,8	0.84	0	1,10,10	0.21	0
2	ASP	B	501	-	2,8,8	0.82	0	1,10,10	0.27	0
2	ASP	C	501	-	2,8,8	0.75	0	1,10,10	0.69	0
2	ASP	E	501	-	2,8,8	0.74	0	1,10,10	0.28	0
2	ASP	F	501	-	2,8,8	0.77	0	1,10,10	0.89	0
2	ASP	D	501	-	2,8,8	0.79	0	1,10,10	0.33	0

In the following table, the Chirals column lists the number of chiral outliers, the number of chiral centers analysed, the number of these observed in the model and the number defined in the Chemical Component Dictionary. Similar counts are reported in the Torsion and Rings columns. '-' means no outliers of that kind were identified.

Mol	Type	Chain	Res	Link	Chirals	Torsions	Rings
2	ASP	A	501	-	-	0/2/8/8	-
2	ASP	B	501	-	-	0/2/8/8	-
2	ASP	C	501	-	-	0/2/8/8	-
2	ASP	E	501	-	-	0/2/8/8	-
2	ASP	F	501	-	-	0/2/8/8	-
2	ASP	D	501	-	-	0/2/8/8	-

There are no bond length outliers.

There are no bond angle outliers.

There are no chirality outliers.

There are no torsion outliers.

There are no ring outliers.

No monomer is involved in short contacts.

5.7 Other polymers [i](#)

There are no such residues in this entry.

5.8 Polymer linkage issues [i](#)

There are no chain breaks in this entry.

6 Fit of model and data [i](#)

6.1 Protein, DNA and RNA chains [i](#)

EDS failed to run properly - this section is therefore empty.

6.2 Non-standard residues in protein, DNA, RNA chains [i](#)

EDS failed to run properly - this section is therefore empty.

6.3 Carbohydrates [i](#)

EDS failed to run properly - this section is therefore empty.

6.4 Ligands [i](#)

EDS failed to run properly - this section is therefore empty.

6.5 Other polymers [i](#)

EDS failed to run properly - this section is therefore empty.