



Full wwPDB X-ray Structure Validation Report ⓘ

May 17, 2020 – 07:25 am BST

PDB ID : 5V9U
Title : Crystal Structure of small molecule ARS-1620 covalently bound to K-Ras G12C
Authors : Janes, M.R.; Zhang, J.; Li, L.-S.; Hansen, R.; Peters, U.; Guo, X.; Chen, Y.; Babbar, A.; Firdaus, S.J.; Feng, J.; Chen, J.H.; Li, S.; Brehmer, D.; Darjania, L.; Li, S.; Long, Y.O.; Thach, C.; Liu, Y.; Zarieh, A.; Ely, T.; Kucharski, J.M.; Kessler, L.V.; Wu, T.; Wang, Y.; Yao, Y.; Deng, X.; Zarrinkar, P.; Dashyant, D.; Lorenzi, M.V.; Hu-Lowe, D.; Patricelli, M.P.; Ren, P.; Liu, Y.
Deposited on : 2017-03-23
Resolution : 1.38 Å(reported)

This is a Full wwPDB X-ray Structure Validation Report for a publicly released PDB entry.

We welcome your comments at validation@mail.wwpdb.org

A user guide is available at

<https://www.wwpdb.org/validation/2017/XrayValidationReportHelp>
with specific help available everywhere you see the ⓘ symbol.

The following versions of software and data (see [references ⓘ](#)) were used in the production of this report:

MolProbity	:	4.02b-467
Mogul	:	1.8.5 (274361), CSD as541be (2020)
Xtriage (Phenix)	:	1.13
EDS	:	2.11
buster-report	:	1.1.7 (2018)
Percentile statistics	:	20191225.v01 (using entries in the PDB archive December 25th 2019)
Refmac	:	5.8.0158
CCP4	:	7.0.044 (Gargrove)
Ideal geometry (proteins)	:	Engh & Huber (2001)
Ideal geometry (DNA, RNA)	:	Parkinson et al. (1996)
Validation Pipeline (wwPDB-VP)	:	2.11

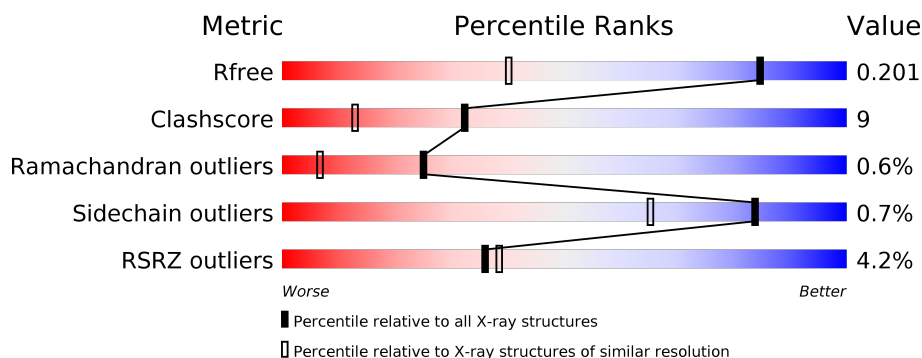
1 Overall quality at a glance

The following experimental techniques were used to determine the structure:

X-RAY DIFFRACTION

The reported resolution of this entry is 1.38 Å.

Percentile scores (ranging between 0-100) for global validation metrics of the entry are shown in the following graphic. The table shows the number of entries on which the scores are based.



Metric	Whole archive (#Entries)	Similar resolution (#Entries, resolution range(Å))
R_{free}	130704	2907 (1.40-1.36)
Clashscore	141614	3037 (1.40-1.36)
Ramachandran outliers	138981	2970 (1.40-1.36)
Sidechain outliers	138945	2969 (1.40-1.36)
RSRZ outliers	127900	2846 (1.40-1.36)

The table below summarises the geometric issues observed across the polymeric chains and their fit to the electron density. The red, orange, yellow and green segments on the lower bar indicate the fraction of residues that contain outliers for ≥ 3 , 2, 1 and 0 types of geometric quality criteria respectively. A grey segment represents the fraction of residues that are not modelled. The numeric value for each fraction is indicated below the corresponding segment, with a dot representing fractions $\leq 5\%$. The upper red bar (where present) indicates the fraction of residues that have poor fit to the electron density. The numeric value is given above the bar.

Mol	Chain	Length	Quality of chain
1	A	170	<div> <div>4%</div> <div> <div></div> <div>82%</div> <div>16%</div> <div>..</div> </div> </div>
1	B	170	<div> <div>5%</div> <div> <div></div> <div>76%</div> <div>19%</div> <div>..</div> </div> </div>

2 Entry composition

There are 6 unique types of molecules in this entry. The entry contains 3422 atoms, of which 0 are hydrogens and 0 are deuteriums.

In the tables below, the ZeroOcc column contains the number of atoms modelled with zero occupancy, the AltConf column contains the number of residues with at least one atom in alternate conformation and the Trace column contains the number of residues modelled with at most 2 atoms.

- Molecule 1 is a protein called GTPase KRas.

Mol	Chain	Residues	Atoms					ZeroOcc	AltConf	Trace
1	A	169	Total	C	N	O	S	0	18	0
			1434	911	238	279	6			
1	B	167	Total	C	N	O	S	0	16	0
			1412	895	238	272	7			

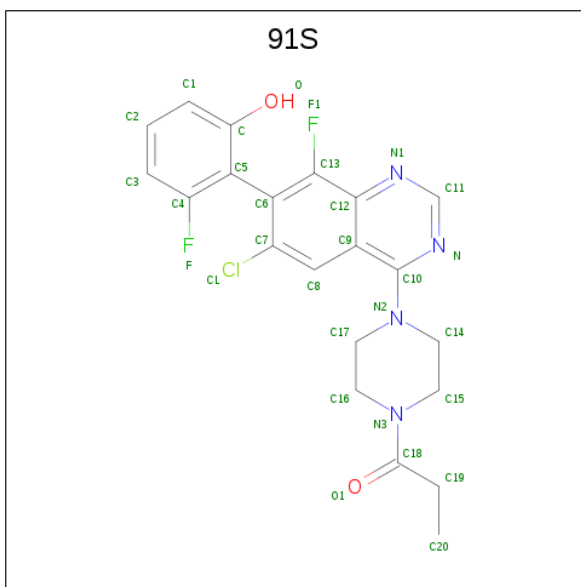
There are 10 discrepancies between the modelled and reference sequences:

Chain	Residue	Modelled	Actual	Comment	Reference
A	0	GLY	-	expression tag	UNP P01116
A	12	CYS	GLY	engineered mutation	UNP P01116
A	51	SER	CYS	engineered mutation	UNP P01116
A	80	LEU	CYS	engineered mutation	UNP P01116
A	118	SER	CYS	engineered mutation	UNP P01116
B	0	GLY	-	expression tag	UNP P01116
B	12	CYS	GLY	engineered mutation	UNP P01116
B	51	SER	CYS	engineered mutation	UNP P01116
B	80	LEU	CYS	engineered mutation	UNP P01116
B	118	SER	CYS	engineered mutation	UNP P01116

- Molecule 2 is CALCIUM ION (three-letter code: CA) (formula: Ca).

Mol	Chain	Residues	Atoms		ZeroOcc	AltConf
2	B	2	Total	Ca	0	0
			2	2		
2	A	4	Total	Ca	0	2
			6	6		

- Molecule 3 is (S)-1-{4-[6-chloro-8-fluoro-7-(2-fluoro-6-hydroxyphenyl)quinazolin-4-yl] piperazin-1-yl}propan-1-one (three-letter code: 91S) (formula: C₂₁H₁₉ClF₂N₄O₂).



Mol	Chain	Residues	Atoms						ZeroOcc	AltConf
3	A	1	Total	C	Cl	F	N	O	0	0
			30	21	1	2	4	2		
3	B	1	Total	C	Cl	F	N	O	0	0
			30	21	1	2	4	2		

- Molecule 4 is GLYCEROL (three-letter code: GOL) (formula: C₃H₈O₃).



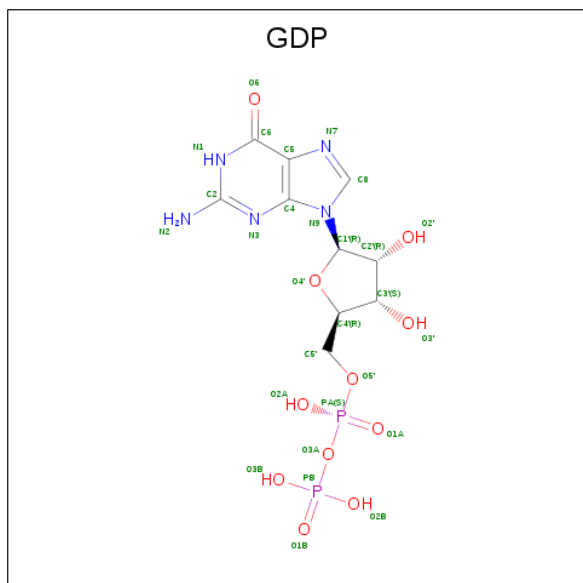
Mol	Chain	Residues	Atoms			ZeroOcc	AltConf
4	A	1	Total	C	O	0	0
			6	3	3		
4	B	1	Total	C	O	0	0
			6	3	3		

Continued on next page...

Continued from previous page...

Mol	Chain	Residues	Atoms			ZeroOcc	AltConf
4	B	1	Total	C	O	0	0
			6	3	3		
4	B	1	Total	C	O	0	0
			6	3	3		

- Molecule 5 is GUANOSINE-5'-DIPHOSPHATE (three-letter code: GDP) (formula: $C_{10}H_{15}N_5O_{11}P_2$).



Mol	Chain	Residues	Atoms					ZeroOcc	AltConf
5	A	1	Total	C	N	O	P	0	0
			28	10	5	11	2		
5	B	1	Total	C	N	O	P	0	0
			28	10	5	11	2		

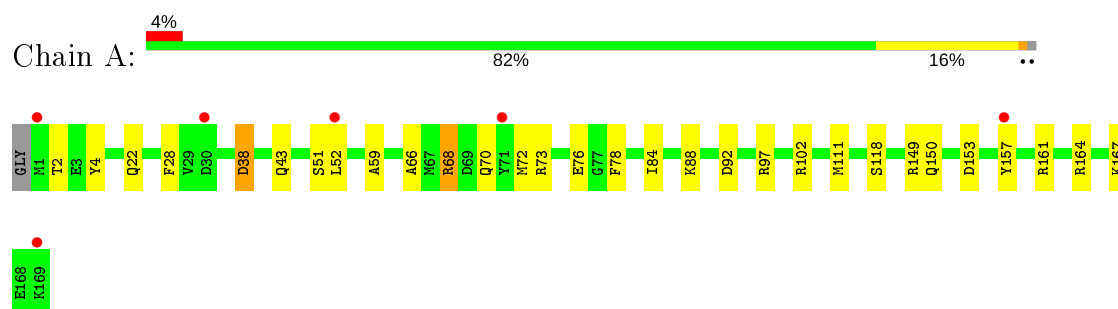
- Molecule 6 is water.

Mol	Chain	Residues	Atoms		ZeroOcc	AltConf
6	A	196	Total	O	0	22
			218	218		
6	B	185	Total	O	0	25
			210	210		

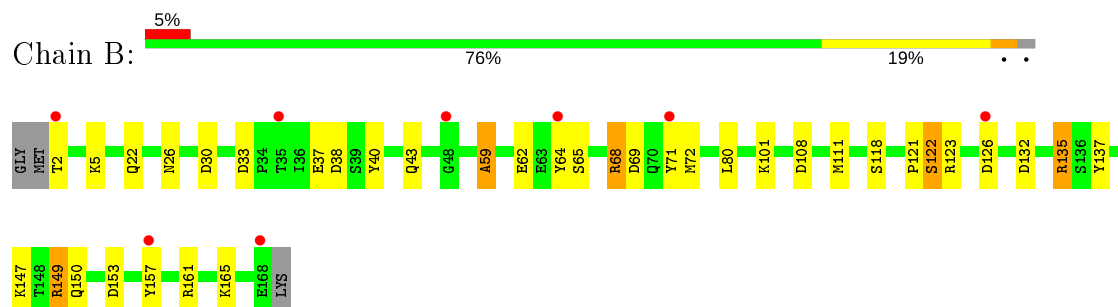
3 Residue-property plots [i](#)

These plots are drawn for all protein, RNA and DNA chains in the entry. The first graphic for a chain summarises the proportions of the various outlier classes displayed in the second graphic. The second graphic shows the sequence view annotated by issues in geometry and electron density. Residues are color-coded according to the number of geometric quality criteria for which they contain at least one outlier: green = 0, yellow = 1, orange = 2 and red = 3 or more. A red dot above a residue indicates a poor fit to the electron density ($RSRZ > 2$). Stretches of 2 or more consecutive residues without any outlier are shown as a green connector. Residues present in the sample, but not in the model, are shown in grey.

• Molecule 1: GTPase KRas



• Molecule 1: GTPase KRas



4 Data and refinement statistics

Property	Value	Source
Space group	P 1	Depositor
Cell constants a, b, c, α , β , γ	33.44Å 39.74Å 61.78Å 77.48° 81.97° 77.20°	Depositor
Resolution (Å)	60.03 – 1.38 38.03 – 1.38	Depositor EDS
% Data completeness (in resolution range)	94.5 (60.03-1.38) 94.5 (38.03-1.38)	Depositor EDS
R_{merge}	(Not available)	Depositor
R_{sym}	0.05	Depositor
$\langle I/\sigma(I) \rangle$ ¹	2.24 (at 1.38Å)	Xtriage
Refinement program	REFMAC 5.8.0073	Depositor
R, R_{free}	0.149 , 0.189 0.163 , 0.201	Depositor DCC
R_{free} test set	2888 reflections (4.93%)	wwPDB-VP
Wilson B-factor (Å ²)	11.5	Xtriage
Anisotropy	0.446	Xtriage
Bulk solvent k_{sol} (e/Å ³), B_{sol} (Å ²)	0.37 , 52.4	EDS
L-test for twinning ²	$\langle L \rangle = 0.49$, $\langle L^2 \rangle = 0.32$	Xtriage
Estimated twinning fraction	No twinning to report.	Xtriage
F_o, F_c correlation	0.97	EDS
Total number of atoms	3422	wwPDB-VP
Average B, all atoms (Å ²)	16.0	wwPDB-VP

Xtriage's analysis on translational NCS is as follows: *The largest off-origin peak in the Patterson function is 9.26% of the height of the origin peak. No significant pseudotranslation is detected.*

¹Intensities estimated from amplitudes.

²Theoretical values of $\langle |L| \rangle$, $\langle L^2 \rangle$ for acentric reflections are 0.5, 0.333 respectively for untwinned datasets, and 0.375, 0.2 for perfectly twinned datasets.

5 Model quality ⓘ

5.1 Standard geometry ⓘ

Bond lengths and bond angles in the following residue types are not validated in this section: GDP, GOL, CA, 91S

The Z score for a bond length (or angle) is the number of standard deviations the observed value is removed from the expected value. A bond length (or angle) with $|Z| > 5$ is considered an outlier worth inspection. RMSZ is the root-mean-square of all Z scores of the bond lengths (or angles).

Mol	Chain	Bond lengths		Bond angles	
		RMSZ	$\# Z > 5$	RMSZ	$\# Z > 5$
1	A	1.15	0/1505	1.33	14/2033 (0.7%)
1	B	1.27	6/1473 (0.4%)	1.47	26/1987 (1.3%)
All	All	1.21	6/2978 (0.2%)	1.40	40/4020 (1.0%)

All (6) bond length outliers are listed below:

Mol	Chain	Res	Type	Atoms	Z	Observed(Å)	Ideal(Å)
1	B	157	TYR	CE1-CZ	-9.29	1.26	1.38
1	B	121	PRO	CA-C	-7.08	1.38	1.52
1	B	118	SER	CB-OG	6.04	1.50	1.42
1	B	123	ARG	N-CA	-5.59	1.35	1.46
1	B	123	ARG	CB-CG	-5.32	1.38	1.52
1	B	137	TYR	CE1-CZ	-5.10	1.31	1.38

All (40) bond angle outliers are listed below:

Mol	Chain	Res	Type	Atoms	Z	Observed(°)	Ideal(°)
1	A	97	ARG	NE-CZ-NH1	12.66	126.63	120.30
1	A	68	ARG	NE-CZ-NH2	12.08	126.34	120.30
1	B	135[A]	ARG	NE-CZ-NH1	11.95	126.28	120.30
1	B	135[B]	ARG	NE-CZ-NH1	11.95	126.28	120.30
1	B	68	ARG	NE-CZ-NH2	10.97	125.78	120.30
1	A	97	ARG	NE-CZ-NH2	-9.97	115.32	120.30
1	B	135[A]	ARG	CG-CD-NE	9.38	131.50	111.80
1	B	135[B]	ARG	CG-CD-NE	9.38	131.50	111.80
1	B	123	ARG	N-CA-CB	-9.06	94.28	110.60
1	A	161	ARG	NE-CZ-NH2	-8.81	115.90	120.30
1	B	153	ASP	CB-CG-OD1	8.57	126.01	118.30
1	A	68	ARG	NE-CZ-NH1	-7.83	116.39	120.30
1	B	153	ASP	CB-CG-OD2	-7.64	111.42	118.30

Continued on next page...

Continued from previous page...

Mol	Chain	Res	Type	Atoms	Z	Observed(°)	Ideal(°)
1	B	40	TYR	CB-CG-CD1	7.36	125.42	121.00
1	B	149	ARG	NE-CZ-NH1	7.35	123.97	120.30
1	B	38[A]	ASP	CB-CG-OD2	-7.29	111.74	118.30
1	B	38[B]	ASP	CB-CG-OD2	-7.29	111.74	118.30
1	B	161	ARG	NE-CZ-NH2	-7.24	116.68	120.30
1	A	92	ASP	CB-CG-OD1	6.88	124.49	118.30
1	B	68	ARG	NE-CZ-NH1	-6.68	116.96	120.30
1	B	165	LYS	CD-CE-NZ	6.63	126.96	111.70
1	B	38[A]	ASP	CB-CG-OD1	6.61	124.25	118.30
1	B	38[B]	ASP	CB-CG-OD1	6.61	124.25	118.30
1	B	101	LYS	CD-CE-NZ	6.51	126.68	111.70
1	A	78	PHE	CB-CG-CD2	-6.35	116.35	120.80
1	B	40	TYR	CB-CG-CD2	-6.24	117.26	121.00
1	A	92	ASP	CB-CG-OD2	-6.20	112.72	118.30
1	A	153	ASP	CB-CG-OD1	6.14	123.82	118.30
1	B	30	ASP	O-C-N	-5.97	113.14	122.70
1	A	38[A]	ASP	CB-CG-OD1	5.95	123.66	118.30
1	A	38[B]	ASP	CB-CG-OD1	5.95	123.66	118.30
1	B	30	ASP	C-N-CA	-5.86	107.06	121.70
1	A	78	PHE	CB-CG-CD1	5.85	124.89	120.80
1	B	108	ASP	CB-CG-OD2	-5.57	113.28	118.30
1	B	33	ASP	CB-CG-OD1	5.47	123.22	118.30
1	A	157	TYR	CB-CG-CD2	-5.38	117.77	121.00
1	A	102	ARG	NE-CZ-NH2	-5.24	117.68	120.30
1	B	69	ASP	CB-CG-OD2	-5.14	113.68	118.30
1	B	122[A]	SER	N-CA-C	5.08	124.71	111.00
1	B	122[B]	SER	N-CA-C	5.08	124.71	111.00

There are no chirality outliers.

There are no planarity outliers.

5.2 Too-close contacts ⓘ

In the following table, the Non-H and H(model) columns list the number of non-hydrogen atoms and hydrogen atoms in the chain respectively. The H(added) column lists the number of hydrogen atoms added and optimized by MolProbity. The Clashes column lists the number of clashes within the asymmetric unit, whereas Symm-Clashes lists symmetry related clashes.

Mol	Chain	Non-H	H(model)	H(added)	Clashes	Symm-Clashes
1	A	1434	0	1437	21	0
1	B	1412	0	1417	30	0

Continued on next page...

Continued from previous page...

Mol	Chain	Non-H	H(model)	H(added)	Clashes	Symm-Clashes
2	A	6	0	0	0	0
2	B	2	0	0	0	0
3	A	30	0	0	1	0
3	B	30	0	0	0	0
4	A	6	0	8	0	0
4	B	18	0	24	1	0
5	A	28	0	12	0	0
5	B	28	0	12	0	0
6	A	218	0	0	8	0
6	B	210	0	0	11	0
All	All	3422	0	2910	52	0

The all-atom clashscore is defined as the number of clashes found per 1000 atoms (including hydrogen atoms). The all-atom clashscore for this structure is 9.

All (52) close contacts within the same asymmetric unit are listed below, sorted by their clash magnitude.

Atom-1	Atom-2	Interatomic distance (Å)	Clash overlap (Å)
1:A:111[B]:MET:CE	6:A:405[B]:HOH:O	1.80	1.21
1:B:150[B]:GLN:CD	6:B:461[B]:HOH:O	1.96	1.04
1:B:5[A]:LYS:HE2	6:B:314:HOH:O	1.65	0.96
1:B:71:TYR:CD1	1:B:72[B]:MET:HE2	2.05	0.92
1:B:71:TYR:CE1	1:B:72[B]:MET:HE2	2.08	0.89
1:A:43[B]:GLN:OE1	6:A:386[B]:HOH:O	1.91	0.88
1:B:150[B]:GLN:NE2	6:B:461[B]:HOH:O	2.10	0.84
1:A:2:THR:HG23	1:A:4[A]:TYR:CE2	2.17	0.79
1:B:71:TYR:CE1	1:B:72[B]:MET:CE	2.65	0.79
1:A:111[B]:MET:HE3	6:A:405[B]:HOH:O	1.57	0.78
1:B:122[A]:SER:O	6:B:301[A]:HOH:O	2.04	0.75
1:B:71:TYR:CD1	1:B:72[B]:MET:CE	2.70	0.73
1:B:80:LEU:HD11	1:B:111[B]:MET:HE3	1.71	0.72
1:B:65:SER:CB	6:B:446:HOH:O	2.37	0.71
1:B:80:LEU:HD11	1:B:111[B]:MET:CE	2.24	0.68
1:A:88:LYS:NZ	6:A:460[B]:HOH:O	2.25	0.67
1:A:111[B]:MET:HE1	6:A:405[B]:HOH:O	1.68	0.67
1:B:22[A]:GLN:CG	1:B:149:ARG:HG3	2.26	0.66
1:B:147:LYS:HE3	6:B:466:HOH:O	1.96	0.65
1:B:71:TYR:HE1	1:B:72[B]:MET:CE	2.09	0.65
1:A:22[B]:GLN:CG	1:A:149:ARG:HG3	2.27	0.64
1:B:65:SER:HB2	6:B:446:HOH:O	1.98	0.64
1:B:65:SER:HB3	6:B:446:HOH:O	1.95	0.63

Continued on next page...

Continued from previous page...

Atom-1	Atom-2	Interatomic distance (Å)	Clash overlap (Å)
1:B:71:TYR:HE1	1:B:72[B]:MET:HE3	1.69	0.58
1:B:71:TYR:HD1	1:B:72[B]:MET:CE	2.19	0.55
1:B:2:THR:O	1:B:2:THR:HG23	2.05	0.55
1:B:71:TYR:CE1	1:B:72[B]:MET:HE3	2.43	0.53
1:B:37[A]:GLU:HG2	1:B:59:ALA:N	2.22	0.53
1:B:132:ASP:OD1	1:B:135[B]:ARG:NH1	2.36	0.53
3:A:204:91S:C14	3:A:204:91S:C8	2.89	0.51
1:A:68:ARG:O	1:A:72[A]:MET:HG2	2.12	0.50
1:A:43[B]:GLN:CD	1:A:52:LEU:HD22	2.33	0.48
1:A:2:THR:CG2	1:A:4[A]:TYR:CE2	2.92	0.47
1:B:111[B]:MET:HE3	1:B:111[B]:MET:HB3	1.72	0.47
1:A:51[A]:SER:OG	1:A:164:ARG:NH2	2.47	0.47
1:A:22[B]:GLN:HG2	1:A:149:ARG:HG3	1.95	0.46
1:A:2:THR:HG21	1:A:4[A]:TYR:OH	2.15	0.46
1:B:126:ASP:HB3	6:B:307:HOH:O	2.14	0.46
1:A:84[A]:ILE:CD1	1:A:118[A]:SER:HA	2.45	0.46
1:A:38[A]:ASP:OD1	6:A:301[A]:HOH:O	2.21	0.46
1:B:68:ARG:O	1:B:72[A]:MET:HG2	2.17	0.45
1:A:43[B]:GLN:HG2	1:A:52:LEU:HD22	1.98	0.45
1:A:84[A]:ILE:HD13	1:A:118[A]:SER:HA	2.00	0.44
1:B:68:ARG:HA	1:B:71:TYR:CE2	2.52	0.44
1:A:66:ALA:O	1:A:70:GLN:HG2	2.18	0.43
1:A:70:GLN:OE1	1:A:73:ARG:NH2	2.52	0.43
1:B:2:THR:HG21	6:B:351:HOH:O	2.19	0.43
1:B:62:GLU:HG2	4:B:201:GOL:O3	2.20	0.41
1:B:26[A]:ASN:ND2	6:B:303[A]:HOH:O	2.36	0.41
6:A:351:HOH:O	1:B:64[A]:TYR:HE2	2.04	0.41
1:A:28:PHE:HA	6:A:349[B]:HOH:O	2.21	0.40
1:A:76:GLU:OE2	1:A:167:LYS:CE	2.69	0.40

There are no symmetry-related clashes.

5.3 Torsion angles ⓘ

5.3.1 Protein backbone ⓘ

In the following table, the Percentiles column shows the percent Ramachandran outliers of the chain as a percentile score with respect to all X-ray entries followed by that with respect to entries of similar resolution.

The Analysed column shows the number of residues for which the backbone conformation was analysed, and the total number of residues.

Mol	Chain	Analysed	Favoured	Allowed	Outliers	Percentiles	
1	A	185/170 (109%)	182 (98%)	2 (1%)	1 (0%)	29	9
1	B	181/170 (106%)	178 (98%)	2 (1%)	1 (1%)	25	7
All	All	366/340 (108%)	360 (98%)	4 (1%)	2 (0%)	25	9

All (2) Ramachandran outliers are listed below:

Mol	Chain	Res	Type
1	A	59	ALA
1	B	59	ALA

5.3.2 Protein sidechains ⓘ

In the following table, the Percentiles column shows the percent sidechain outliers of the chain as a percentile score with respect to all X-ray entries followed by that with respect to entries of similar resolution.

The Analysed column shows the number of residues for which the sidechain conformation was analysed, and the total number of residues.

Mol	Chain	Analysed	Rotameric	Outliers	Percentiles	
1	A	162/150 (108%)	161 (99%)	1 (1%)	86	70
1	B	159/150 (106%)	158 (99%)	1 (1%)	86	70
All	All	321/300 (107%)	319 (99%)	2 (1%)	84	70

All (2) residues with a non-rotameric sidechain are listed below:

Mol	Chain	Res	Type
1	A	150	GLN
1	B	43	GLN

Some sidechains can be flipped to improve hydrogen bonding and reduce clashes. There are no such sidechains identified.

5.3.3 RNA ⓘ

There are no RNA molecules in this entry.

5.4 Non-standard residues in protein, DNA, RNA chains ⓘ

There are no non-standard protein/DNA/RNA residues in this entry.

5.5 Carbohydrates [i](#)

There are no carbohydrates in this entry.

5.6 Ligand geometry [i](#)

Of 16 ligands modelled in this entry, 8 are monoatomic - leaving 8 for Mogul analysis.

In the following table, the Counts columns list the number of bonds (or angles) for which Mogul statistics could be retrieved, the number of bonds (or angles) that are observed in the model and the number of bonds (or angles) that are defined in the Chemical Component Dictionary. The Link column lists molecule types, if any, to which the group is linked. The Z score for a bond length (or angle) is the number of standard deviations the observed value is removed from the expected value. A bond length (or angle) with $|Z| > 2$ is considered an outlier worth inspection. RMSZ is the root-mean-square of all Z scores of the bond lengths (or angles).

Mol	Type	Chain	Res	Link	Bond lengths			Bond angles		
					Counts	RMSZ	# Z > 2	Counts	RMSZ	# Z > 2
4	GOL	B	201	-	5,5,5	0.58	0	5,5,5	0.81	0
3	91S	A	204	1	33,33,33	1.80	9 (27%)	44,48,48	1.87	12 (27%)
4	GOL	B	205	-	5,5,5	0.63	0	5,5,5	0.99	1 (20%)
4	GOL	B	206	-	5,5,5	1.04	1 (20%)	5,5,5	1.44	1 (20%)
5	GDP	B	207	2	24,30,30	1.32	3 (12%)	31,47,47	2.41	5 (16%)
5	GDP	A	206	2	24,30,30	1.01	1 (4%)	31,47,47	1.97	5 (16%)
3	91S	B	204	1	33,33,33	1.88	12 (36%)	44,48,48	2.96	18 (40%)
4	GOL	A	205	-	5,5,5	1.22	0	5,5,5	0.93	0

In the following table, the Chirals column lists the number of chiral outliers, the number of chiral centers analysed, the number of these observed in the model and the number defined in the Chemical Component Dictionary. Similar counts are reported in the Torsion and Rings columns. '-' means no outliers of that kind were identified.

Mol	Type	Chain	Res	Link	Chirals	Torsions	Rings
4	GOL	B	201	-	-	0/4/4/4	-
3	91S	A	204	1	-	3/14/24/24	0/4/4/4
4	GOL	B	205	-	-	0/4/4/4	-
4	GOL	B	206	-	-	2/4/4/4	-
5	GDP	B	207	2	-	2/12/32/32	0/3/3/3
5	GDP	A	206	2	-	1/12/32/32	0/3/3/3
3	91S	B	204	1	-	2/14/24/24	0/4/4/4
4	GOL	A	205	-	-	3/4/4/4	-

All (26) bond length outliers are listed below:

Mol	Chain	Res	Type	Atoms	Z	Observed(Å)	Ideal(Å)
3	B	204	91S	C10-N	4.48	1.39	1.33
3	A	204	91S	C3-C4	4.44	1.47	1.37
3	B	204	91S	C3-C4	4.20	1.46	1.37
3	A	204	91S	C14-N2	-4.01	1.40	1.46
5	B	207	GDP	C5-C4	3.38	1.49	1.40
5	A	206	GDP	C6-C5	3.16	1.46	1.41
3	A	204	91S	C11-N1	3.12	1.37	1.32
3	B	204	91S	C5-C4	-2.97	1.35	1.39
3	B	204	91S	C6-C7	-2.96	1.37	1.40
3	A	204	91S	C6-C13	-2.90	1.34	1.39
3	B	204	91S	C16-N3	2.85	1.52	1.47
3	B	204	91S	C18-N3	-2.80	1.29	1.35
5	B	207	GDP	O4'-C1'	2.72	1.44	1.41
3	A	204	91S	C15-N3	2.64	1.51	1.47
3	B	204	91S	C14-C15	-2.63	1.41	1.51
3	B	204	91S	O1-C18	2.50	1.28	1.23
3	A	204	91S	C8-C9	-2.41	1.37	1.42
3	B	204	91S	C2-C1	-2.32	1.34	1.38
3	A	204	91S	C7-CL	2.26	1.79	1.73
5	B	207	GDP	C2'-C1'	-2.25	1.50	1.53
3	A	204	91S	C9-C12	-2.23	1.36	1.42
3	B	204	91S	C2-C3	-2.13	1.34	1.38
4	B	206	GOL	O2-C2	-2.09	1.37	1.43
3	A	204	91S	C18-N3	-2.09	1.31	1.35
3	B	204	91S	C6-C13	-2.06	1.35	1.39
3	B	204	91S	C9-C12	-2.05	1.37	1.42

All (42) bond angle outliers are listed below:

Mol	Chain	Res	Type	Atoms	Z	Observed(°)	Ideal(°)
3	B	204	91S	C8-C7-C6	11.27	126.31	122.48
5	B	207	GDP	C6-C5-C4	-8.33	112.85	120.80
3	B	204	91S	C11-N1-C12	7.17	120.39	114.81
5	B	207	GDP	C6-N1-C2	6.01	125.48	115.93
3	B	204	91S	C15-C14-N2	5.62	121.61	110.70
5	A	206	GDP	C6-N1-C2	5.09	124.02	115.93
5	A	206	GDP	C5-C6-N1	-5.08	116.49	123.43
5	B	207	GDP	N3-C2-N1	-4.99	120.57	127.22
3	B	204	91S	C19-C18-N3	4.85	125.78	117.95
5	A	206	GDP	C6-C5-C4	-4.82	116.20	120.80
3	B	204	91S	C3-C4-C5	-4.46	118.50	123.94
3	A	204	91S	C17-N2-C14	4.42	121.27	111.52

Continued on next page...

Continued from previous page...

Mol	Chain	Res	Type	Atoms	Z	Observed(°)	Ideal(°)
3	B	204	91S	C5-C6-C7	4.13	126.53	121.69
3	A	204	91S	C5-C6-C7	4.08	126.47	121.69
3	A	204	91S	C19-C18-N3	4.01	124.43	117.95
3	B	204	91S	C8-C7-CL	-4.00	115.22	119.20
3	A	204	91S	C3-C4-C5	-3.98	119.08	123.94
5	A	206	GDP	N3-C2-N1	-3.78	122.19	127.22
3	B	204	91S	N1-C11-N	-3.57	123.10	128.68
3	A	204	91S	C11-N1-C12	3.52	117.55	114.81
3	B	204	91S	F-C4-C3	3.20	125.73	118.59
5	B	207	GDP	C5-C6-N1	-3.12	119.17	123.43
3	A	204	91S	O1-C18-C19	-2.93	115.17	121.42
3	B	204	91S	O1-C18-C19	-2.89	115.25	121.42
3	B	204	91S	F-C4-C5	-2.84	115.48	119.52
5	B	207	GDP	C2-N3-C4	2.81	118.57	115.36
5	A	206	GDP	C2-N3-C4	2.72	118.46	115.36
3	A	204	91S	F-C4-C3	2.71	124.64	118.59
3	B	204	91S	C7-C6-C13	-2.64	112.60	116.86
3	A	204	91S	C7-C6-C13	-2.62	112.64	116.86
3	B	204	91S	C9-C10-N2	2.56	125.96	120.97
3	A	204	91S	C15-C14-N2	-2.54	105.76	110.70
3	B	204	91S	F1-C13-C6	-2.40	116.98	120.16
3	B	204	91S	C16-N3-C15	2.37	117.18	112.62
3	A	204	91S	C9-C10-N2	2.34	125.52	120.97
3	A	204	91S	F-C4-C5	-2.33	116.22	119.52
3	A	204	91S	N1-C11-N	-2.32	125.05	128.68
3	B	204	91S	O1-C18-N3	-2.21	117.74	122.05
3	B	204	91S	N-C10-N2	-2.15	112.45	116.99
4	B	205	GOL	C3-C2-C1	-2.06	103.70	111.70
4	B	206	GOL	O3-C3-C2	-2.02	100.50	110.20
3	B	204	91S	O-C-C1	-2.00	113.89	119.33

There are no chirality outliers.

All (13) torsion outliers are listed below:

Mol	Chain	Res	Type	Atoms
4	A	205	GOL	O1-C1-C2-C3
5	A	206	GDP	PA-O3A-PB-O3B
4	B	206	GOL	C1-C2-C3-O3
4	A	205	GOL	C1-C2-C3-O3
4	B	206	GOL	O2-C2-C3-O3
3	B	204	91S	N3-C18-C19-C20
3	A	204	91S	N3-C18-C19-C20

Continued on next page...

Continued from previous page...

Mol	Chain	Res	Type	Atoms
4	A	205	GOL	O2-C2-C3-O3
5	B	207	GDP	PA-O3A-PB-O3B
3	A	204	91S	O1-C18-C19-C20
3	B	204	91S	O1-C18-C19-C20
5	B	207	GDP	PA-O3A-PB-O2B
3	A	204	91S	C9-C10-N2-C14

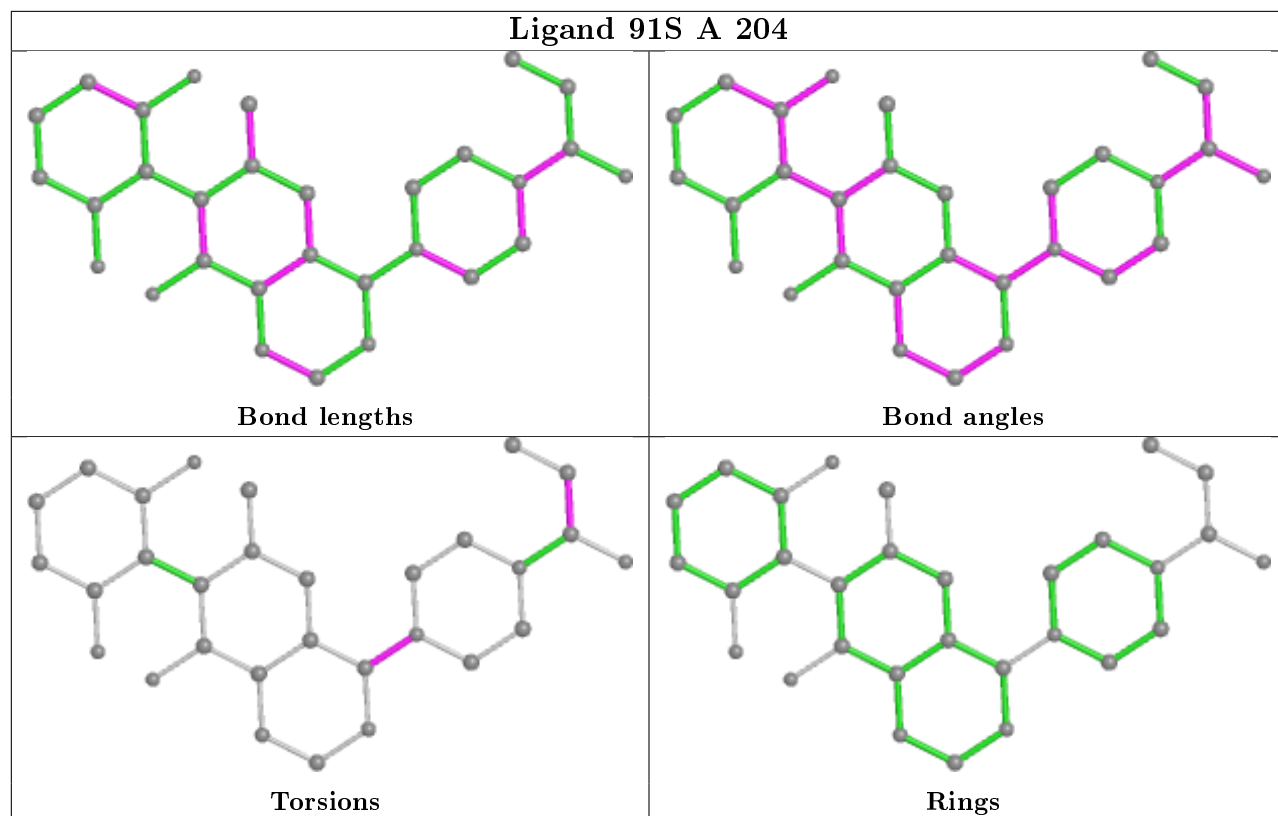
There are no ring outliers.

2 monomers are involved in 2 short contacts:

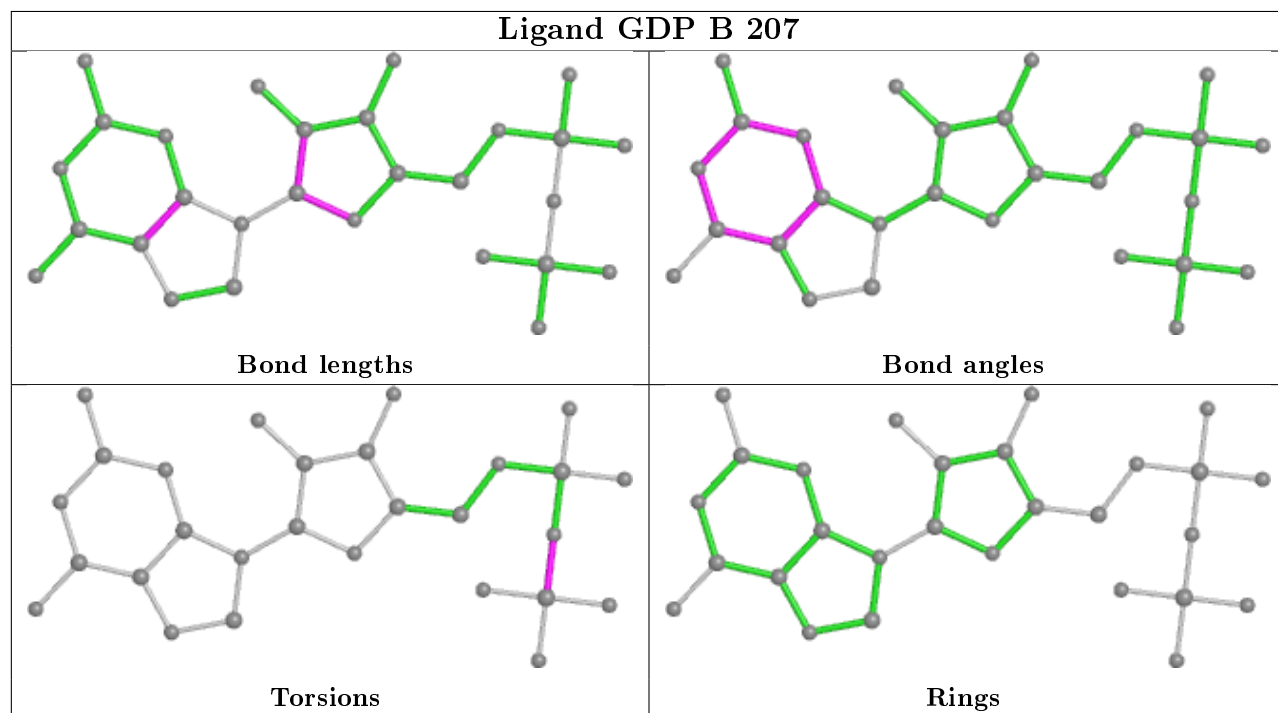
Mol	Chain	Res	Type	Clashes	Symm-Clashes
4	B	201	GOL	1	0
3	A	204	91S	1	0

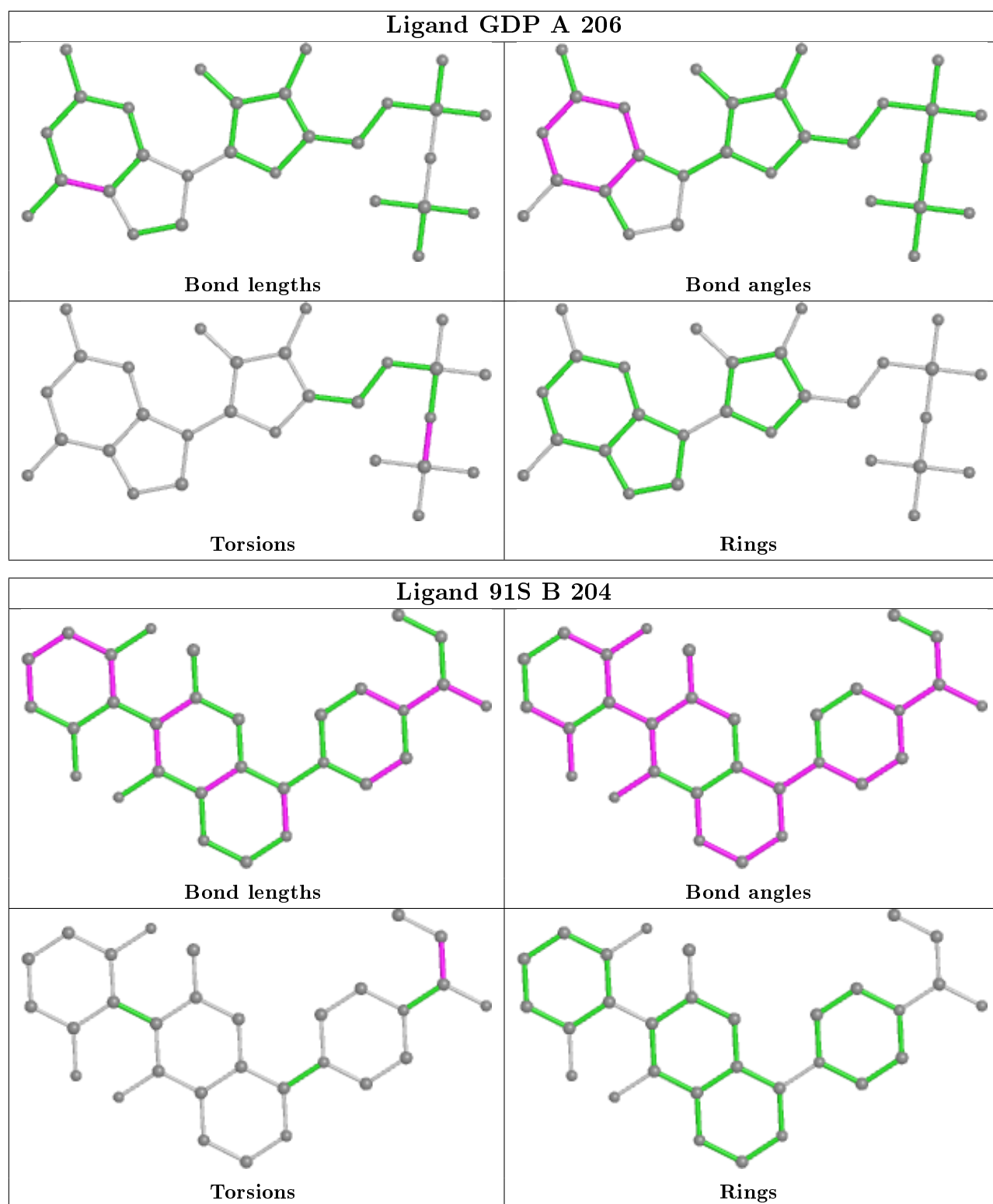
The following is a two-dimensional graphical depiction of Mogul quality analysis of bond lengths, bond angles, torsion angles, and ring geometry for all instances of the Ligand of Interest. In addition, ligands with molecular weight > 250 and outliers as shown on the validation Tables will also be included. For torsion angles, if less than 5% of the Mogul distribution of torsion angles is within 10 degrees of the torsion angle in question, then that torsion angle is considered an outlier. Any bond that is central to one or more torsion angles identified as an outlier by Mogul will be highlighted in the graph. For rings, the root-mean-square deviation (RMSD) between the ring in question and similar rings identified by Mogul is calculated over all ring torsion angles. If the average RMSD is greater than 60 degrees and the minimal RMSD between the ring in question and any Mogul-identified rings is also greater than 60 degrees, then that ring is considered an outlier. The outliers are highlighted in purple. The color gray indicates Mogul did not find sufficient equivalents in the CSD to analyse the geometry.

Ligand 91S A 204



Ligand GDP B 207





5.7 Other polymers ⓘ

There are no such residues in this entry.

5.8 Polymer linkage issues ⓘ

There are no chain breaks in this entry.

6 Fit of model and data [i](#)

6.1 Protein, DNA and RNA chains [i](#)

In the following table, the column labelled ‘#RSRZ> 2’ contains the number (and percentage) of RSRZ outliers, followed by percent RSRZ outliers for the chain as percentile scores relative to all X-ray entries and entries of similar resolution. The OWAB column contains the minimum, median, 95th percentile and maximum values of the occupancy-weighted average B-factor per residue. The column labelled ‘Q< 0.9’ lists the number of (and percentage) of residues with an average occupancy less than 0.9.

Mol	Chain	Analysed	<RSRZ>	#RSRZ>2	OWAB(Å ²)	Q<0.9
1	A	169/170 (99%)	0.46	6 (3%) 42 44	7, 13, 27, 43	0
1	B	167/170 (98%)	0.41	8 (4%) 30 32	8, 13, 25, 39	0
All	All	336/340 (98%)	0.44	14 (4%) 36 38	7, 13, 27, 43	0

All (14) RSRZ outliers are listed below:

Mol	Chain	Res	Type	RSRZ
1	A	1	MET	5.5
1	A	169	LYS	4.5
1	A	71[A]	TYR	3.4
1	B	71	TYR	2.9
1	A	157	TYR	2.8
1	B	168	GLU	2.8
1	B	48	GLY	2.8
1	B	2	THR	2.7
1	A	30	ASP	2.3
1	B	126	ASP	2.3
1	B	64[A]	TYR	2.2
1	A	52	LEU	2.1
1	B	35	THR	2.1
1	B	157	TYR	2.1

6.2 Non-standard residues in protein, DNA, RNA chains [i](#)

There are no non-standard protein/DNA/RNA residues in this entry.

6.3 Carbohydrates [i](#)

There are no carbohydrates in this entry.

6.4 Ligands ⓘ

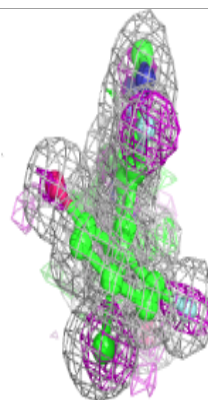
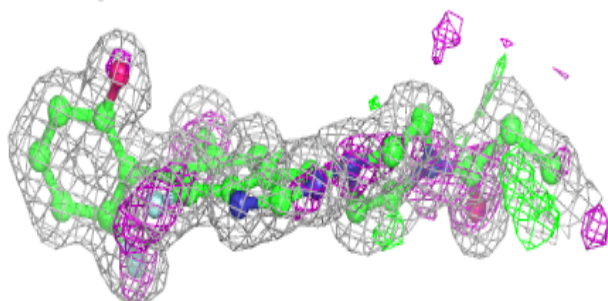
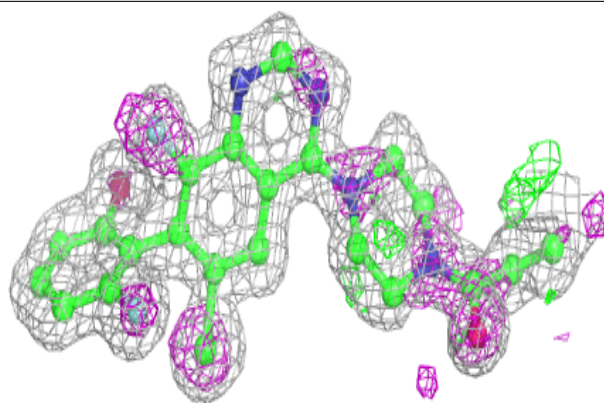
In the following table, the Atoms column lists the number of modelled atoms in the group and the number defined in the chemical component dictionary. The B-factors column lists the minimum, median, 95th percentile and maximum values of B factors of atoms in the group. The column labelled 'Q<0.9' lists the number of atoms with occupancy less than 0.9.

Mol	Type	Chain	Res	Atoms	RSCC	RSR	B-factors(Å ²)	Q<0.9
4	GOL	B	206	6/6	0.80	0.21	25,28,31,38	0
4	GOL	A	205	6/6	0.80	0.21	14,20,21,21	0
4	GOL	B	201	6/6	0.88	0.12	17,20,22,23	0
3	91S	B	204	30/30	0.95	0.11	6,8,11,12	0
4	GOL	B	205	6/6	0.96	0.13	11,12,14,16	0
3	91S	A	204	30/30	0.97	0.08	6,8,10,12	0
2	CA	A	207[B]	1/1	0.97	0.21	12,12,12,12	1
2	CA	A	207[A]	1/1	0.97	0.21	9,9,9,9	1
5	GDP	A	206	28/28	0.98	0.09	3,5,6,6	0
5	GDP	B	207	28/28	0.98	0.08	4,5,7,9	0
2	CA	A	203[B]	1/1	0.98	0.09	19,19,19,19	1
2	CA	A	203[A]	1/1	0.98	0.09	7,7,7,7	1
2	CA	B	202	1/1	0.99	0.06	4,4,4,4	0
2	CA	A	202	1/1	0.99	0.04	8,8,8,8	0
2	CA	B	203	1/1	0.99	0.05	5,5,5,5	0
2	CA	A	201	1/1	0.99	0.04	4,4,4,4	0

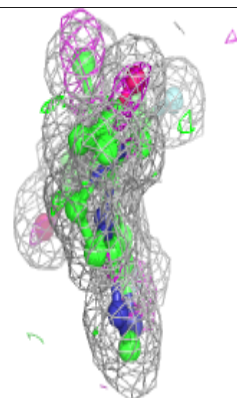
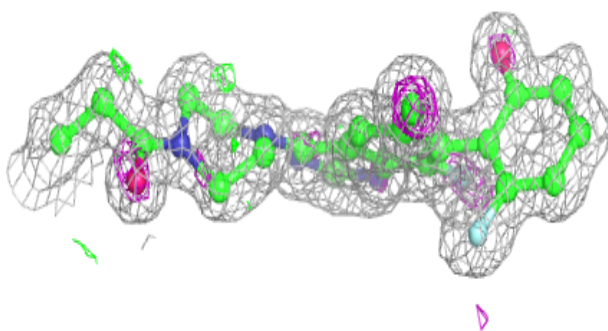
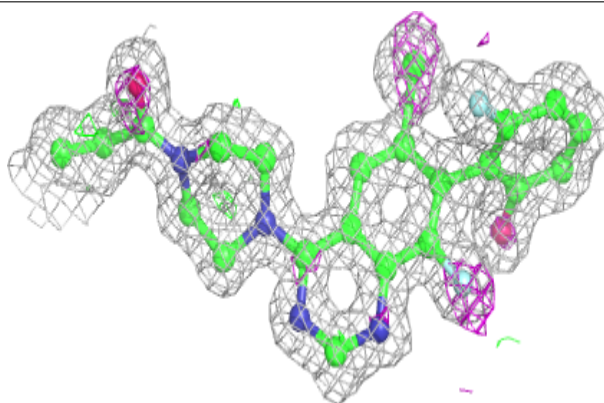
The following is a graphical depiction of the model fit to experimental electron density of all instances of the Ligand of Interest. In addition, ligands with molecular weight > 250 and outliers as shown on the geometry validation Tables will also be included. Each fit is shown from different orientation to approximate a three-dimensional view.

Electron density around 91S B 204:

$2mF_o-DF_c$ (at 0.7 rmsd) in gray
 mF_o-DF_c (at 3 rmsd) in purple (negative)
and green (positive)

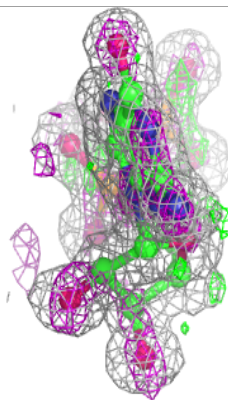
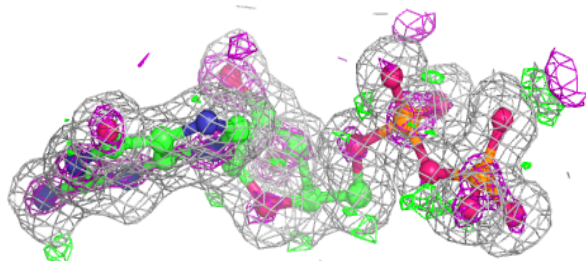
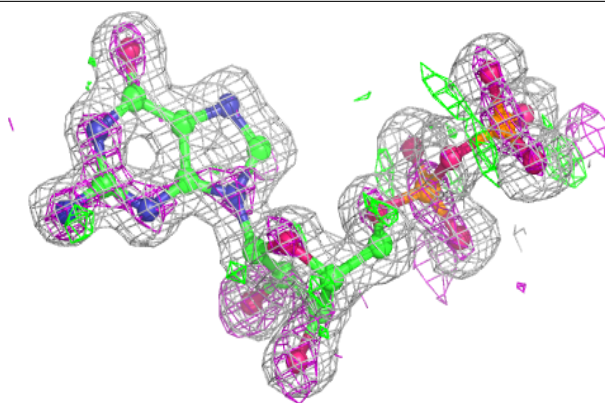
**Electron density around 91S A 204:**

$2mF_o-DF_c$ (at 0.7 rmsd) in gray
 mF_o-DF_c (at 3 rmsd) in purple (negative)
and green (positive)

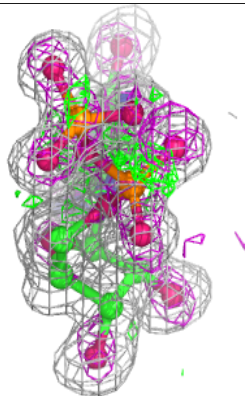
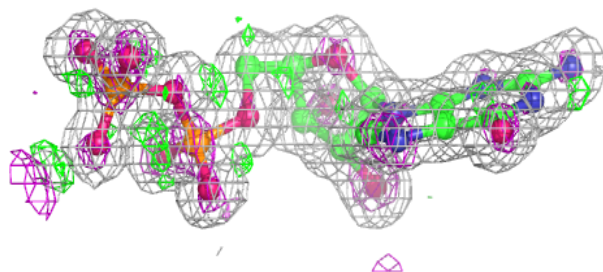
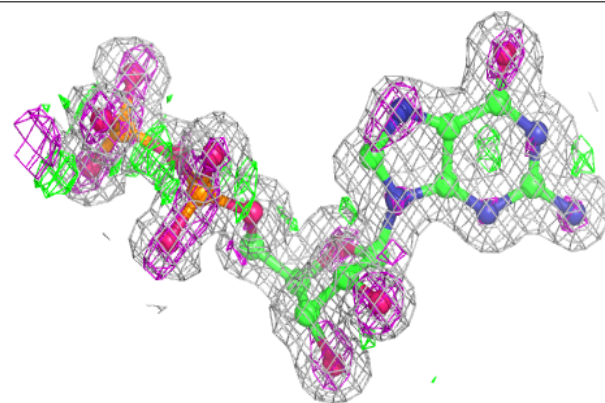


Electron density around GDP A 206:

$2mF_o-DF_c$ (at 0.7 rmsd) in gray
 mF_o-DF_c (at 3 rmsd) in purple (negative)
and green (positive)

**Electron density around GDP B 207:**

$2mF_o-DF_c$ (at 0.7 rmsd) in gray
 mF_o-DF_c (at 3 rmsd) in purple (negative)
and green (positive)



6.5 Other polymers [i](#)

There are no such residues in this entry.