



Full wwPDB X-ray Structure Validation Report ⓘ

Aug 10, 2020 – 04:14 AM BST

PDB ID : 1VAQ
Title : Crystal structure of the Mg²⁺-(chromomycin A3)₂-d(TTGGCCAA)₂ complex reveals GGCC binding specificity of the drug dimer chelated by metal ion
Authors : Hou, M.H.; Robinson, H.; Gao, Y.G.; Wang, A.H.-J.
Deposited on : 2004-02-19
Resolution : 2.00 Å(reported)

This is a Full wwPDB X-ray Structure Validation Report for a publicly released PDB entry.

We welcome your comments at validation@mail.wwpdb.org

A user guide is available at

<https://www.wwpdb.org/validation/2017/XrayValidationReportHelp>

with specific help available everywhere you see the ⓘ symbol.

The following versions of software and data (see [references ⓘ](#)) were used in the production of this report:

MolProbity : 4.02b-467
Mogul : 1.8.5 (274361), CSD as541be (2020)
Xtriage (Phenix) : 1.13
EDS : 2.13.1
buster-report : 1.1.7 (2018)
Percentile statistics : 20191225.v01 (using entries in the PDB archive December 25th 2019)
Refmac : 5.8.0158
CCP4 : 7.0.044 (Gargrove)
Ideal geometry (proteins) : Engh & Huber (2001)
Ideal geometry (DNA, RNA) : Parkinson et al. (1996)
Validation Pipeline (wwPDB-VP) : 2.13.1

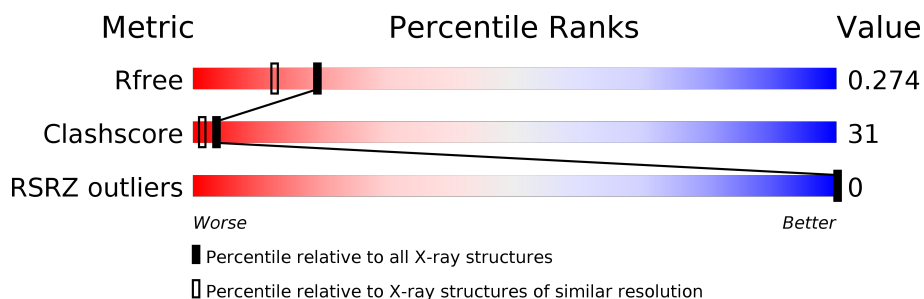
1 Overall quality at a glance

The following experimental techniques were used to determine the structure:

X-RAY DIFFRACTION


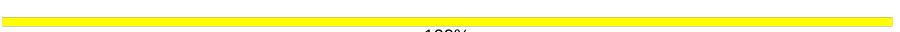
The reported resolution of this entry is 2.00 Å.

Percentile scores (ranging between 0-100) for global validation metrics of the entry are shown in the following graphic. The table shows the number of entries on which the scores are based.




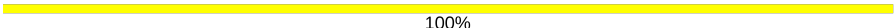
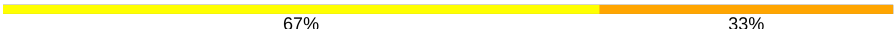

Metric	Whole archive (#Entries)	Similar resolution (#Entries, resolution range(Å))
R_{free}	130704	8085 (2.00-2.00)
Clashscore	141614	9178 (2.00-2.00)
RSRZ outliers	127900	7900 (2.00-2.00)

The table below summarises the geometric issues observed across the polymeric chains and their fit to the electron density. The red, orange, yellow and green segments on the lower bar indicate the fraction of residues that contain outliers for ≥ 3 , 2, 1 and 0 types of geometric quality criteria respectively. A grey segment represents the fraction of residues that are not modelled. The numeric value for each fraction is indicated below the corresponding segment, with a dot representing fractions $\leq 5\%$. The upper red bar (where present) indicates the fraction of residues that have poor fit to the electron density. The numeric value is given above the bar.

Mol	Chain	Length	Quality of chain
1	A	8	
1	B	8	
1	C	8	
1	D	8	
2	E	2	
2	F	2	
2	I	2	
2	K	2	

Continued on next page...

Continued from previous page...

Mol	Chain	Length	Quality of chain
3	G	3	 67% 33%
3	H	3	 100%
3	J	3	 67% 33%
3	L	3	 33% 67%

2 Entry composition [i](#)

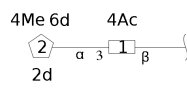
There are 6 unique types of molecules in this entry. The entry contains 1261 atoms, of which 0 are hydrogens and 0 are deuteriums.

In the tables below, the ZeroOcc column contains the number of atoms modelled with zero occupancy, the AltConf column contains the number of residues with at least one atom in alternate conformation and the Trace column contains the number of residues modelled with at most 2 atoms.

- Molecule 1 is a DNA chain called 5'-D(*TP*TP*GP*GP*CP*CP*AP*A)-3'.

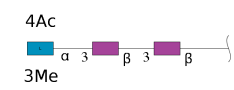
Mol	Chain	Residues	Atoms					ZeroOcc	AltConf	Trace
1	A	8	Total	C	N	O	P	0	0	0
			161	78	30	46	7			
1	B	8	Total	C	N	O	P	0	0	0
			161	78	30	46	7			
1	C	8	Total	C	N	O	P	0	0	0
			161	78	30	46	7			
1	D	8	Total	C	N	O	P	0	0	0
			161	78	30	46	7			

- Molecule 2 is an oligosaccharide called 2,6-dideoxy-4-O-methyl-alpha-D-galactopyranose-(1-3)-(2R,3R,6R)-6-hydroxy-2-methyltetrahydro-2H-pyran-3-yl acetate.



Mol	Chain	Residues	Atoms			ZeroOcc	AltConf	Trace
2	E	2	Total	C	O	0	0	0
			23	15	8			
2	F	2	Total	C	O	0	0	0
			23	15	8			
2	I	2	Total	C	O	0	0	0
			23	15	8			
2	K	2	Total	C	O	0	0	0
			23	15	8			

- Molecule 3 is an oligosaccharide called 3-C-methyl-4-O-acetyl-alpha-L-Olivopyranose-(1-3)-(2R,5S,6R)-6-methyltetrahydro-2H-pyran-2,5-diol-(1-3)-(2R,5S,6R)-6-methyltetrahydro-2H-pyran-2,5-diol.

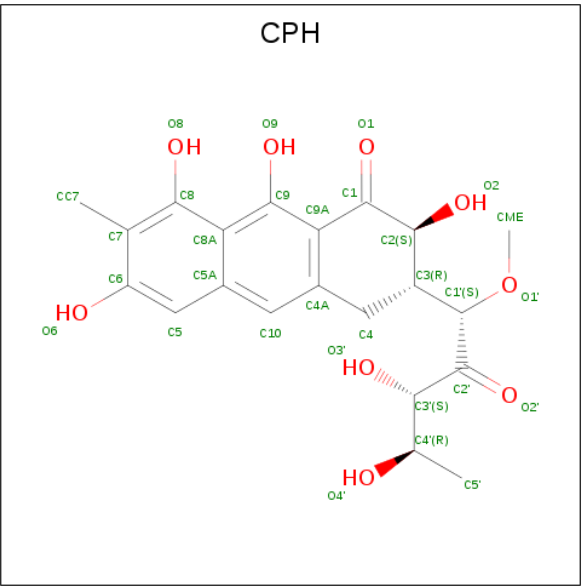


Mol	Chain	Residues	Atoms			ZeroOcc	AltConf	Trace
3	G	3	Total	C	O	0	0	0
			32	21	11			
3	H	3	Total	C	O	0	0	0
			32	21	11			
3	J	3	Total	C	O	0	0	0
			32	21	11			
3	L	3	Total	C	O	0	0	0
			32	21	11			

- Molecule 4 is MAGNESIUM ION (three-letter code: MG) (formula: Mg).

Mol	Chain	Residues	Atoms		ZeroOcc	AltConf
4	A	1	Total	Mg	0	0
			1	1		
4	D	1	Total	Mg	0	0
			1	1		

- Molecule 5 is (1S)-5-deoxy-1-O-methyl-1-C-[(2R,3S)-3,5,7,10-tetrahydroxy-6-methyl-4-oxo-1,2,3,4-tetrahydroanthracen-2-yl]-D-xylulose (three-letter code: CPH) (formula: C₂₁H₂₄O₉).



Continued from previous page...

Mol	Chain	Residues	Atoms			ZeroOcc	AltConf
5	B	1	Total	C	O	0	0
			28	21	7		
5	C	1	Total	C	O	0	0
			28	21	7		
5	D	1	Total	C	O	0	0
			28	21	7		

- Molecule 6 is water.

Mol	Chain	Residues	Atoms		ZeroOcc	AltConf
6	A	33	Total	O	0	0
			33	33		
6	B	100	Total	O	0	0
			100	100		
6	C	78	Total	O	0	0
			78	78		
6	D	72	Total	O	0	0
			72	72		

3 Residue-property plots

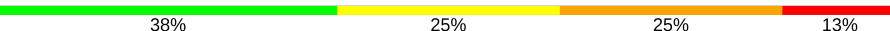
These plots are drawn for all protein, RNA, DNA and oligosaccharide chains in the entry. The first graphic for a chain summarises the proportions of the various outlier classes displayed in the second graphic. The second graphic shows the sequence view annotated by issues in geometry and electron density. Residues are color-coded according to the number of geometric quality criteria for which they contain at least one outlier: green = 0, yellow = 1, orange = 2 and red = 3 or more. A red dot above a residue indicates a poor fit to the electron density ($RSRZ > 2$). Stretches of 2 or more consecutive residues without any outlier are shown as a green connector. Residues present in the sample, but not in the model, are shown in grey.

- Molecule 1: 5'-D(*TP*TP*GP*GP*CP*CP*AP*A)-3'

Chain A: 



- Molecule 1: 5'-D(*TP*TP*GP*GP*CP*CP*AP*A)-3'

Chain B: 



- Molecule 1: 5'-D(*TP*TP*GP*GP*CP*CP*AP*A)-3'

Chain C: 



- Molecule 1: 5'-D(*TP*TP*GP*GP*CP*CP*AP*A)-3'

Chain D: 



- Molecule 2: 2,6-dideoxy-4-O-methyl-alpha-D-galactopyranose-(1-3)-(2R,3R,6R)-6-hydroxy-2-methyltetrahydro-2H-pyran-3-yl acetate

Chain E: 



- Molecule 2: 2,6-dideoxy-4-O-methyl-alpha-D-galactopyranose-(1-3)-(2R,3R,6R)-6-hydroxy-2-methyltetrahydro-2H-pyran-3-yl acetate

Chain F: 

ART1
1GL2

- Molecule 2: 2,6-dideoxy-4-O-methyl- α -D-galactopyranose-(1-3)-(2R,3R,6R)-6-hydroxy-2-methyltetrahydro-2H-pyran-3-yl acetate

Chain I:  100%ART1
1GL2

- Molecule 2: 2,6-dideoxy-4-O-methyl- α -D-galactopyranose-(1-3)-(2R,3R,6R)-6-hydroxy-2-methyltetrahydro-2H-pyran-3-yl acetate

Chain K:  50% 50%ART1
1GL2


- Molecule 3: 3-C-methyl-4-O-acetyl- α -L-Olivopyranose-(1-3)-(2R,5S,6R)-6-methyltetrahydro-2H-pyran-2,5-diol-(1-3)-(2R,5S,6R)-6-methyltetrahydro-2H-pyran-2,5-diol

Chain G:  67% 33%CDR1
CDR2
ER13

- Molecule 3: 3-C-methyl-4-O-acetyl- α -L-Olivopyranose-(1-3)-(2R,5S,6R)-6-methyltetrahydro-2H-pyran-2,5-diol-(1-3)-(2R,5S,6R)-6-methyltetrahydro-2H-pyran-2,5-diol

Chain H:  100%CDR1
CDR2
ER13

- Molecule 3: 3-C-methyl-4-O-acetyl- α -L-Olivopyranose-(1-3)-(2R,5S,6R)-6-methyltetrahydro-2H-pyran-2,5-diol-(1-3)-(2R,5S,6R)-6-methyltetrahydro-2H-pyran-2,5-diol

Chain J:  67% 33%CDR1
CDR2
ER13

- Molecule 3: 3-C-methyl-4-O-acetyl- α -L-Olivopyranose-(1-3)-(2R,5S,6R)-6-methyltetrahydro-2H-pyran-2,5-diol-(1-3)-(2R,5S,6R)-6-methyltetrahydro-2H-pyran-2,5-diol

Chain L:  33% 67%CDR1
CDR2
ER13

4 Data and refinement statistics

Property	Value	Source
Space group	P 65 2 2	Depositor
Cell constants a, b, c, α , β , γ	42.23 Å 42.23 Å 246.11 Å 90.00° 90.00° 120.00°	Depositor
Resolution (Å)	50.00 – 2.00 19.97 – 2.00	Depositor EDS
% Data completeness (in resolution range)	(Not available) (50.00-2.00) 79.8 (19.97-2.00)	Depositor EDS
R_{merge}	0.01	Depositor
R_{sym}	(Not available)	Depositor
$\langle I/\sigma(I) \rangle$	-	Xtriage
Refinement program	CNS	Depositor
R, R_{free}	0.235 , 0.278 0.240 , 0.274	Depositor DCC
R_{free} test set	823 reflections (10.66%)	wwPDB-VP
Wilson B-factor (Å ²)	15.1	Xtriage
Anisotropy	0.585	Xtriage
Bulk solvent k_{sol} (e/Å ³), B_{sol} (Å ²)	0.38 , 101.2	EDS
L-test for twinning ¹	$\langle L \rangle = 0.48$, $\langle L^2 \rangle = 0.31$	Xtriage
Estimated twinning fraction	No twinning to report.	Xtriage
F_o, F_c correlation	0.85	EDS
Total number of atoms	1261	wwPDB-VP
Average B, all atoms (Å ²)	18.0	wwPDB-VP

Xtriage's analysis on translational NCS is as follows: *The largest off-origin peak in the Patterson function is 6.13% of the height of the origin peak. No significant pseudotranslation is detected.*

¹Theoretical values of $\langle |L| \rangle$, $\langle L^2 \rangle$ for acentric reflections are 0.5, 0.333 respectively for untwinned datasets, and 0.375, 0.2 for perfectly twinned datasets.

5 Model quality ⓘ

5.1 Standard geometry ⓘ

Bond lengths and bond angles in the following residue types are not validated in this section: CPH, MG, 1GL, CDR, ARI, ERI

The Z score for a bond length (or angle) is the number of standard deviations the observed value is removed from the expected value. A bond length (or angle) with $|Z| > 5$ is considered an outlier worth inspection. RMSZ is the root-mean-square of all Z scores of the bond lengths (or angles).

Mol	Chain	Bond lengths		Bond angles	
		RMSZ	# Z >5	RMSZ	# Z >5
1	A	1.05	0/180	1.35	0/276
1	B	1.16	0/180	1.37	3/276 (1.1%)
1	C	1.11	0/180	1.28	2/276 (0.7%)
1	D	1.08	1/180 (0.6%)	1.30	1/276 (0.4%)
All	All	1.10	1/720 (0.1%)	1.33	6/1104 (0.5%)

Chiral center outliers are detected by calculating the chiral volume of a chiral center and verifying if the center is modelled as a planar moiety or with the opposite hand. A planarity outlier is detected by checking planarity of atoms in a peptide group, atoms in a mainchain group or atoms of a sidechain that are expected to be planar.

Mol	Chain	#Chirality outliers	#Planarity outliers
1	A	0	2
1	B	0	3
1	C	0	2
1	D	0	2
All	All	0	9

All (1) bond length outliers are listed below:

Mol	Chain	Res	Type	Atoms	Z	Observed(Å)	Ideal(Å)
1	D	51	DG	C2-N2	-5.77	1.28	1.34

All (6) bond angle outliers are listed below:

Mol	Chain	Res	Type	Atoms	Z	Observed(°)	Ideal(°)
1	C	45	DC	O4'-C1'-N1	6.18	112.33	108.00
1	B	10	DT	C5'-C4'-C3'	-5.91	103.47	114.10
1	C	47	DA	O5'-P-OP2	-5.49	100.76	105.70
1	B	10	DT	N1-C1'-C2'	-5.33	102.47	112.60

Continued on next page...

Continued from previous page...

Mol	Chain	Res	Type	Atoms	Z	Observed(°)	Ideal(°)
1	B	11	DG	N9-C1'-C2'	-5.18	102.77	112.60
1	D	51	DG	N9-C1'-C2'	-5.03	103.04	112.60

There are no chirality outliers.

All (9) planarity outliers are listed below:

Mol	Chain	Res	Type	Group
1	A	3	DG	Sidechain
1	A	4	DG	Sidechain
1	B	10	DT	Sidechain
1	B	11	DG	Sidechain
1	B	12	DG	Sidechain
1	C	44	DG	Sidechain
1	C	45	DC	Sidechain
1	D	51	DG	Sidechain
1	D	53	DC	Sidechain

5.2 Too-close contacts

In the following table, the Non-H and H(model) columns list the number of non-hydrogen atoms and hydrogen atoms in the chain respectively. The H(added) column lists the number of hydrogen atoms added and optimized by MolProbity. The Clashes column lists the number of clashes within the asymmetric unit, whereas Symm-Clashes lists symmetry related clashes.

Mol	Chain	Non-H	H(model)	H(added)	Clashes	Symm-Clashes
1	A	161	0	92	9	0
1	B	161	0	92	6	0
1	C	161	0	92	14	0
1	D	161	0	90	5	0
2	E	23	0	24	1	0
2	F	23	0	24	0	0
2	I	23	0	24	0	0
2	K	23	0	24	1	0
3	G	32	0	33	1	0
3	H	32	0	33	0	0
3	J	32	0	33	2	0
3	L	32	0	33	3	0
4	A	1	0	0	0	0
4	D	1	0	0	0	0
5	A	28	0	20	3	0
5	B	28	0	20	6	0

Continued on next page...

Continued from previous page...

Mol	Chain	Non-H	H(model)	H(added)	Clashes	Symm-Clashes
5	C	28	0	20	8	0
5	D	28	0	20	4	0
6	A	33	0	0	2	0
6	B	100	0	0	4	0
6	C	78	0	0	10	0
6	D	72	0	0	3	0
All	All	1261	0	674	52	0

The all-atom clashscore is defined as the number of clashes found per 1000 atoms (including hydrogen atoms). The all-atom clashscore for this structure is 31.

All (52) close contacts within the same asymmetric unit are listed below, sorted by their clash magnitude.

Atom-1	Atom-2	Interatomic distance (Å)	Clash overlap (Å)
1:C:45:DC:H1'	6:C:230:HOH:O	1.61	0.99
5:B:23:CPH:H5'B	6:B:431:HOH:O	1.69	0.92
1:B:10:DT:H1'	6:B:208:HOH:O	1.75	0.86
1:C:46:DC:H5'	6:C:230:HOH:O	1.77	0.83
1:D:52:DG:H2''	1:D:53:DC:H5'	1.61	0.83
1:C:45:DC:C1'	6:C:230:HOH:O	2.24	0.82
1:B:12:DG:H2''	1:B:13:DC:H5'	1.62	0.80
1:C:46:DC:OP1	5:C:73:CPH:H5'B	1.83	0.78
6:D:323:HOH:O	2:K:2:1GL:H63	1.87	0.75
5:C:73:CPH:H5'A	5:C:73:CPH:H4	1.72	0.71
5:C:73:CPH:H1'	6:C:298:HOH:O	1.93	0.69
5:B:23:CPH:HME	3:J:2:CDR:H21	1.74	0.67
1:C:44:DG:H2''	1:C:45:DC:H5'	1.76	0.67
5:D:63:CPH:HC7B	3:J:2:CDR:H32	1.77	0.67
1:A:1:DT:H2''	1:A:2:DT:H5'	1.79	0.65
1:B:9:DT:H2'	1:B:10:DT:H72	1.79	0.64
1:A:2:DT:H2''	1:A:3:DG:H5'	1.80	0.63
1:D:52:DG:C2'	1:D:53:DC:H5'	2.27	0.63
6:D:449:HOH:O	3:L:2:CDR:H62	2.00	0.62
1:C:46:DC:H2'	1:C:47:DA:C8	2.37	0.59
1:A:6:DC:H5''	5:A:33:CPH:O3'	2.02	0.58
1:B:9:DT:H2'	1:B:10:DT:C7	2.33	0.57
1:C:45:DC:C2'	6:C:230:HOH:O	2.52	0.55
5:C:73:CPH:HC7B	3:L:2:CDR:H32	1.89	0.54
5:B:23:CPH:H5'A	6:B:351:HOH:O	2.06	0.54
1:C:42:DT:H1'	1:C:43:DG:C8	2.43	0.53
1:A:6:DC:H5''	5:A:33:CPH:H3	1.89	0.53

Continued on next page...

Continued from previous page...

Atom-1	Atom-2	Interatomic distance (Å)	Clash overlap (Å)
1:A:2:DT:H2''	1:A:3:DG:C5'	2.40	0.52
5:C:73:CPH:H5'A	5:C:73:CPH:C4	2.40	0.50
1:C:44:DG:N7	6:C:429:HOH:O	2.35	0.49
5:B:23:CPH:HME	1:C:47:DA:H4'	1.94	0.49
1:A:1:DT:H2''	1:A:2:DT:C5'	2.44	0.48
1:A:1:DT:H2'	1:A:2:DT:H71	1.95	0.48
5:C:73:CPH:H5'	6:C:427:HOH:O	2.12	0.47
5:D:63:CPH:H1'	6:D:315:HOH:O	2.14	0.47
5:A:33:CPH:HC7B	3:G:2:CDR:H32	1.97	0.46
1:D:53:DC:H4'	5:D:63:CPH:C5A	2.45	0.46
1:A:5:DC:N4	6:A:239:HOH:O	2.39	0.46
6:A:240:HOH:O	2:E:1:ARI:H32	2.16	0.46
1:C:43:DG:N7	6:C:222:HOH:O	2.36	0.45
1:C:43:DG:C8	6:C:222:HOH:O	2.70	0.45
3:L:3:ERI:H32	3:L:3:ERI:O1	2.17	0.45
1:D:54:DC:H2''	1:D:55:DA:H5'	1.98	0.45
1:A:1:DT:H2'	1:A:2:DT:C6	2.51	0.45
1:C:42:DT:C2	1:C:43:DG:N7	2.87	0.43
5:C:73:CPH:HMEB	6:C:298:HOH:O	2.18	0.43
5:B:23:CPH:H5'	1:C:48:DA:OP1	2.19	0.42
5:C:73:CPH:C3	5:C:73:CPH:H5'A	2.49	0.42
1:D:54:DC:OP1	5:D:63:CPH:O2'	2.37	0.42
1:B:9:DT:H2''	1:B:10:DT:O5'	2.19	0.41
1:B:9:DT:C6	1:B:10:DT:H72	2.56	0.41
5:B:23:CPH:C5'	6:B:350:HOH:O	2.68	0.41

There are no symmetry-related clashes.

5.3 Torsion angles [i](#)

5.3.1 Protein backbone [i](#)

There are no protein molecules in this entry.

5.3.2 Protein sidechains [i](#)

There are no protein molecules in this entry.

5.3.3 RNA ⓘ

There are no RNA molecules in this entry.

5.4 Non-standard residues in protein, DNA, RNA chains ⓘ

There are no non-standard protein/DNA/RNA residues in this entry.

5.5 Carbohydrates ⓘ

20 monosaccharides are modelled in this entry.

In the following table, the Counts columns list the number of bonds (or angles) for which Mogul statistics could be retrieved, the number of bonds (or angles) that are observed in the model and the number of bonds (or angles) that are defined in the Chemical Component Dictionary. The Link column lists molecule types, if any, to which the group is linked. The Z score for a bond length (or angle) is the number of standard deviations the observed value is removed from the expected value. A bond length (or angle) with $|Z| > 2$ is considered an outlier worth inspection. RMSZ is the root-mean-square of all Z scores of the bond lengths (or angles).

Mol	Type	Chain	Res	Link	Bond lengths			Bond angles		
					Counts	RMSZ	# Z > 2	Counts	RMSZ	# Z > 2
2	ARI	E	1	2,5	12,12,12	1.91	3 (25%)	15,16,16	2.61	5 (33%)
2	1GL	E	2	2	11,11,11	1.98	3 (27%)	11,15,15	2.24	5 (45%)
2	ARI	F	1	2,5	12,12,12	1.77	2 (16%)	15,16,16	2.46	2 (13%)
2	1GL	F	2	2	11,11,11	1.96	4 (36%)	11,15,15	2.61	4 (36%)
3	CDR	G	1	3,5	9,9,9	1.81	2 (22%)	11,12,12	2.14	4 (36%)
3	CDR	G	2	3	9,9,9	2.11	2 (22%)	11,12,12	2.27	6 (54%)
3	ERI	G	3	3	14,14,14	2.37	5 (35%)	17,21,21	1.90	4 (23%)
3	CDR	H	1	3,5	9,9,9	3.36	3 (33%)	11,12,12	2.06	2 (18%)
3	CDR	H	2	3	9,9,9	2.14	3 (33%)	11,12,12	2.51	5 (45%)
3	ERI	H	3	3	14,14,14	3.40	5 (35%)	17,21,21	1.92	6 (35%)
2	ARI	I	1	2,5	12,12,12	2.03	4 (33%)	15,16,16	2.17	4 (26%)
2	1GL	I	2	2	11,11,11	1.86	3 (27%)	11,15,15	2.05	6 (54%)
3	CDR	J	1	3,5	9,9,9	3.11	2 (22%)	11,12,12	2.02	4 (36%)
3	CDR	J	2	3	9,9,9	1.70	1 (11%)	11,12,12	1.75	2 (18%)
3	ERI	J	3	3	14,14,14	1.67	4 (28%)	17,21,21	2.02	6 (35%)
2	ARI	K	1	2,5	12,12,12	1.91	2 (16%)	15,16,16	2.31	5 (33%)
2	1GL	K	2	2	11,11,11	1.61	2 (18%)	11,15,15	2.42	6 (54%)
3	CDR	L	1	3,5	9,9,9	3.18	3 (33%)	11,12,12	2.11	3 (27%)

Mol	Type	Chain	Res	Link	Bond lengths			Bond angles		
					Counts	RMSZ	# Z > 2	Counts	RMSZ	# Z > 2
3	CDR	L	2	3	9,9,9	2.06	3 (33%)	11,12,12	2.16	6 (54%)
3	ERI	L	3	3	14,14,14	1.88	6 (42%)	17,21,21	1.83	5 (29%)

In the following table, the Chirals column lists the number of chiral outliers, the number of chiral centers analysed, the number of these observed in the model and the number defined in the Chemical Component Dictionary. Similar counts are reported in the Torsion and Rings columns. '-' means no outliers of that kind were identified.

Mol	Type	Chain	Res	Link	Chirals	Torsions	Rings
2	ARI	E	1	2,5	-	0/4/17/17	0/1/1/1
2	1GL	E	2	2	-	0/2/18/18	0/1/1/1
2	ARI	F	1	2,5	-	4/4/17/17	0/1/1/1
2	1GL	F	2	2	-	0/2/18/18	0/1/1/1
3	CDR	G	1	3,5	-	-	0/1/1/1
3	CDR	G	2	3	-	-	0/1/1/1
3	ERI	G	3	3	-	0/4/23/23	0/1/1/1
3	CDR	H	1	3,5	-	-	0/1/1/1
3	CDR	H	2	3	-	-	0/1/1/1
3	ERI	H	3	3	-	0/4/23/23	0/1/1/1
2	ARI	I	1	2,5	-	4/4/17/17	0/1/1/1
2	1GL	I	2	2	-	0/2/18/18	0/1/1/1
3	CDR	J	1	3,5	-	-	0/1/1/1
3	CDR	J	2	3	-	-	0/1/1/1
3	ERI	J	3	3	-	0/4/23/23	0/1/1/1
2	ARI	K	1	2,5	-	1/4/17/17	0/1/1/1
2	1GL	K	2	2	-	0/2/18/18	0/1/1/1
3	CDR	L	1	3,5	-	-	0/1/1/1
3	CDR	L	2	3	-	-	0/1/1/1
3	ERI	L	3	3	-	2/4/23/23	0/1/1/1

All (62) bond length outliers are listed below:

Mol	Chain	Res	Type	Atoms	Z	Observed(Å)	Ideal(Å)
3	H	3	ERI	C2-C1	10.95	1.59	1.51
3	H	1	CDR	C3-C4	8.83	1.65	1.52
3	J	1	CDR	C3-C4	8.34	1.64	1.52
3	L	1	CDR	C4-C5	6.87	1.64	1.52
3	L	1	CDR	C3-C4	5.65	1.60	1.52
2	I	1	ARI	C3-C4	5.20	1.63	1.52
3	H	2	CDR	C3-C4	5.04	1.59	1.52
3	G	3	ERI	C2-C1	4.84	1.55	1.51

Continued on next page...

Continued from previous page...

Mol	Chain	Res	Type	Atoms	Z	Observed(Å)	Ideal(Å)
2	K	1	ARI	C3-C4	4.73	1.62	1.52
2	E	1	ARI	CME-CO4	4.38	1.64	1.49
3	G	2	CDR	C3-C4	4.21	1.58	1.52
3	G	3	ERI	O3-C3	-4.07	1.37	1.44
3	G	2	CDR	C4-C5	3.95	1.59	1.52
2	F	1	ARI	C3-C4	3.89	1.60	1.52
2	E	1	ARI	C3-C4	3.82	1.60	1.52
3	G	1	CDR	C3-C4	3.62	1.57	1.52
3	L	2	CDR	C3-C4	3.58	1.57	1.52
3	H	1	CDR	C4-C5	3.57	1.58	1.52
2	F	2	1GL	C6-C5	3.50	1.60	1.51
2	I	2	1GL	C3-C4	3.41	1.59	1.52
2	E	2	1GL	C4-C5	3.36	1.58	1.52
2	F	1	ARI	CME-CO4	3.34	1.61	1.49
3	L	2	CDR	C4-C5	3.19	1.58	1.52
3	G	3	ERI	CC3-C3	3.09	1.58	1.52
2	E	2	1GL	O1-C1	3.06	1.47	1.39
3	J	2	CDR	C4-C5	3.03	1.57	1.52
2	I	2	1GL	O1-C1	3.01	1.47	1.39
3	L	3	ERI	CC3-C3	3.00	1.57	1.52
2	I	1	ARI	CME-CO4	2.97	1.59	1.49
2	K	2	1GL	O1-C1	2.95	1.47	1.39
2	K	1	ARI	CME-CO4	2.93	1.59	1.49
3	L	3	ERI	C2-C1	2.89	1.53	1.51
2	K	2	1GL	C4-C5	2.88	1.57	1.52
3	J	3	ERI	CME-CO4	2.86	1.59	1.49
3	H	3	ERI	C6-C5	2.84	1.58	1.51
3	H	3	ERI	CC3-C3	2.82	1.57	1.52
3	H	2	CDR	C4-C5	2.79	1.57	1.52
2	I	2	1GL	C4-C5	2.78	1.57	1.52
2	E	2	1GL	C6-C5	2.73	1.58	1.51
3	G	3	ERI	C4-C5	2.71	1.60	1.52
3	H	3	ERI	CME-CO4	2.64	1.58	1.49
3	L	3	ERI	C4-C5	2.64	1.60	1.52
3	L	3	ERI	O1-C1	2.61	1.46	1.39
2	F	2	1GL	C2-C1	2.56	1.59	1.51
3	L	3	ERI	CME-CO4	2.55	1.58	1.49
3	L	3	ERI	C3-C4	2.54	1.64	1.53
3	G	3	ERI	CME-CO4	2.50	1.58	1.49
3	L	2	CDR	C6-C5	2.50	1.57	1.51
2	F	2	1GL	C4-C5	2.41	1.56	1.52
3	J	1	CDR	O1-C1	2.36	1.45	1.39

Continued on next page...

Continued from previous page...

Mol	Chain	Res	Type	Atoms	Z	Observed(Å)	Ideal(Å)
2	F	2	1GL	O5-C5	2.29	1.50	1.44
3	J	3	ERI	C4-C5	2.29	1.59	1.52
3	H	1	CDR	C2-C1	2.23	1.57	1.50
2	I	1	ARI	O4-C4	2.19	1.49	1.46
3	L	1	CDR	C2-C1	2.14	1.57	1.50
3	H	3	ERI	C4-C5	2.12	1.58	1.52
3	J	3	ERI	O4-CO4	2.09	1.39	1.35
3	J	3	ERI	C3-C4	2.08	1.62	1.53
3	H	2	CDR	C3-C2	2.05	1.58	1.52
3	G	1	CDR	C4-C5	2.05	1.56	1.52
2	I	1	ARI	C6-C5	2.04	1.56	1.51
2	E	1	ARI	C6-C5	2.02	1.56	1.51

All (90) bond angle outliers are listed below:

Mol	Chain	Res	Type	Atoms	Z	Observed(°)	Ideal(°)
2	F	1	ARI	C4-O4-CO4	6.42	127.52	117.46
2	E	1	ARI	O4-CO4-CME	5.66	121.50	111.09
2	E	1	ARI	C4-O4-CO4	5.55	126.16	117.46
2	F	1	ARI	O4-CO4-CME	5.29	120.83	111.09
2	F	2	1GL	C6-C5-C4	-5.22	105.45	113.41
3	H	1	CDR	C2-C3-C4	-5.05	104.37	111.76
2	K	2	1GL	C6-C5-C4	-4.92	105.92	113.41
2	I	1	ARI	C4-O4-CO4	4.91	125.16	117.46
3	L	1	CDR	C2-C3-C4	-4.83	104.69	111.76
2	F	2	1GL	O5-C5-C6	4.77	117.00	106.70
3	G	1	CDR	C2-C3-C4	-4.75	104.82	111.76
2	K	1	ARI	O4-CO4-CME	4.71	119.76	111.09
2	K	1	ARI	C4-O4-CO4	4.65	124.75	117.46
3	J	3	ERI	O4-CO4-CME	4.37	119.13	111.09
3	H	2	CDR	C6-C5-C4	-4.36	105.15	112.70
3	J	1	CDR	C2-C3-C4	-4.28	105.49	111.76
2	I	1	ARI	O4-CO4-CME	4.14	118.71	111.09
3	H	3	ERI	C4-O4-CO4	4.02	123.68	117.81
3	J	2	CDR	C2-C3-C4	-3.94	106.00	111.76
3	G	2	CDR	C6-C5-C4	-3.92	105.91	112.70
3	H	2	CDR	C2-C3-C4	-3.91	106.03	111.76
3	G	3	ERI	O4-CO4-CME	3.70	117.90	111.09
2	E	2	1GL	C6-C5-C4	-3.70	107.77	113.41
3	H	2	CDR	O5-C1-C2	-3.68	108.26	110.75
2	E	2	1GL	O5-C5-C6	3.64	114.55	106.70
3	L	2	CDR	C6-C5-C4	-3.61	106.44	112.70

Continued on next page...

Continued from previous page...

Mol	Chain	Res	Type	Atoms	Z	Observed(°)	Ideal(°)
3	G	1	CDR	C6-C5-C4	-3.50	106.63	112.70
3	H	3	ERI	O4-CO4-CME	3.47	117.47	111.09
3	G	3	ERI	C6-C5-C4	-3.45	106.65	113.52
3	J	3	ERI	C4-O4-CO4	-3.40	112.84	117.81
3	J	1	CDR	C6-C5-C4	-3.34	106.90	112.70
3	G	2	CDR	C2-C3-C4	-3.23	107.03	111.76
2	K	2	1GL	O5-C5-C6	3.23	113.67	106.70
2	K	1	ARI	O5-C1-C2	-3.09	108.66	110.75
2	I	2	1GL	O5-C5-C6	3.07	113.33	106.70
2	F	2	1GL	O4-C4-C5	3.07	115.03	108.02
3	H	1	CDR	C6-C5-C4	-3.06	107.40	112.70
3	L	1	CDR	O1-C1-C2	-3.01	104.30	109.18
3	L	3	ERI	O4-C4-C5	2.97	116.72	107.20
3	G	3	ERI	C4-O4-CO4	2.97	122.14	117.81
3	L	2	CDR	O5-C5-C6	2.95	113.06	106.70
3	H	3	ERI	C6-C5-C4	-2.92	107.71	113.52
3	L	1	CDR	C6-C5-C4	-2.91	107.66	112.70
3	L	3	ERI	O4-CO4-CME	2.90	116.43	111.09
2	E	1	ARI	O5-C1-C2	-2.89	108.80	110.75
3	G	2	CDR	O1-C1-C2	-2.87	104.53	109.18
2	I	2	1GL	C6-C5-C4	-2.81	109.12	113.41
3	H	2	CDR	O5-C5-C6	2.79	112.73	106.70
2	I	1	ARI	O5-C1-C2	-2.76	108.89	110.75
2	K	2	1GL	O5-C5-C4	-2.73	104.05	109.13
2	I	2	1GL	C1-C2-C3	-2.72	104.65	110.91
3	G	2	CDR	O5-C5-C6	2.69	112.50	106.70
2	I	2	1GL	O4-C4-C5	2.68	114.14	108.02
3	L	2	CDR	O1-C1-C2	-2.68	104.84	109.18
2	E	2	1GL	O4-C4-C5	2.65	114.07	108.02
3	J	2	CDR	C6-C5-C4	-2.64	108.13	112.70
3	H	2	CDR	O1-C1-C2	-2.64	104.91	109.18
3	G	1	CDR	O5-C5-C6	2.57	112.26	106.70
3	L	3	ERI	C3-C4-C5	-2.57	106.05	111.59
3	L	2	CDR	O5-C5-C4	-2.53	105.58	110.00
3	J	3	ERI	C6-C5-C4	-2.51	108.52	113.52
3	L	3	ERI	CC3-C3-C4	2.51	117.51	111.36
3	J	1	CDR	O5-C5-C4	-2.46	105.69	110.00
3	G	2	CDR	O5-C1-C2	-2.45	109.09	110.75
2	K	2	1GL	C1-C2-C3	-2.43	105.31	110.91
3	J	1	CDR	O5-C5-C6	2.41	111.91	106.70
3	G	3	ERI	O5-C5-C6	2.41	111.91	106.70
2	I	2	1GL	O3-C3-C2	-2.41	103.96	109.94

Continued on next page...

Continued from previous page...

Mol	Chain	Res	Type	Atoms	Z	Observed(°)	Ideal(°)
3	H	3	ERI	C3-C4-C5	-2.39	106.42	111.59
3	J	3	ERI	O4-C4-C3	2.39	114.51	108.04
3	L	3	ERI	C4-O4-CO4	2.39	121.30	117.81
2	K	2	1GL	O4-C4-C5	2.39	113.46	108.02
3	L	2	CDR	C2-C3-C4	-2.38	108.28	111.76
2	E	2	1GL	CME-O4-C4	2.35	120.70	114.52
3	J	3	ERI	O5-C5-C6	2.34	111.75	106.70
2	K	1	ARI	C2-C3-C4	-2.33	106.34	111.09
2	E	1	ARI	O1-C1-O5	2.22	113.51	108.36
2	F	2	1GL	C1-C2-C3	-2.22	105.80	110.91
3	H	3	ERI	O4-C4-C5	2.19	114.21	107.20
2	E	2	1GL	C1-C2-C3	-2.19	105.87	110.91
3	J	3	ERI	O4-C4-C5	2.17	114.16	107.20
3	H	3	ERI	O5-C5-C6	2.15	111.34	106.70
2	I	1	ARI	O1-C1-C2	2.09	112.56	109.18
3	L	2	CDR	O1-C1-O5	2.09	113.21	108.36
2	K	2	1GL	O3-C3-C2	-2.07	104.80	109.94
3	G	2	CDR	O1-C1-O5	2.06	113.15	108.36
2	K	1	ARI	C3-C2-C1	2.06	115.46	110.86
3	G	1	CDR	O1-C1-C2	-2.04	105.87	109.18
2	E	1	ARI	O4-CO4-OC4	-2.04	118.92	122.96
2	I	2	1GL	CME-O4-C4	2.03	119.85	114.52

There are no chirality outliers.

All (11) torsion outliers are listed below:

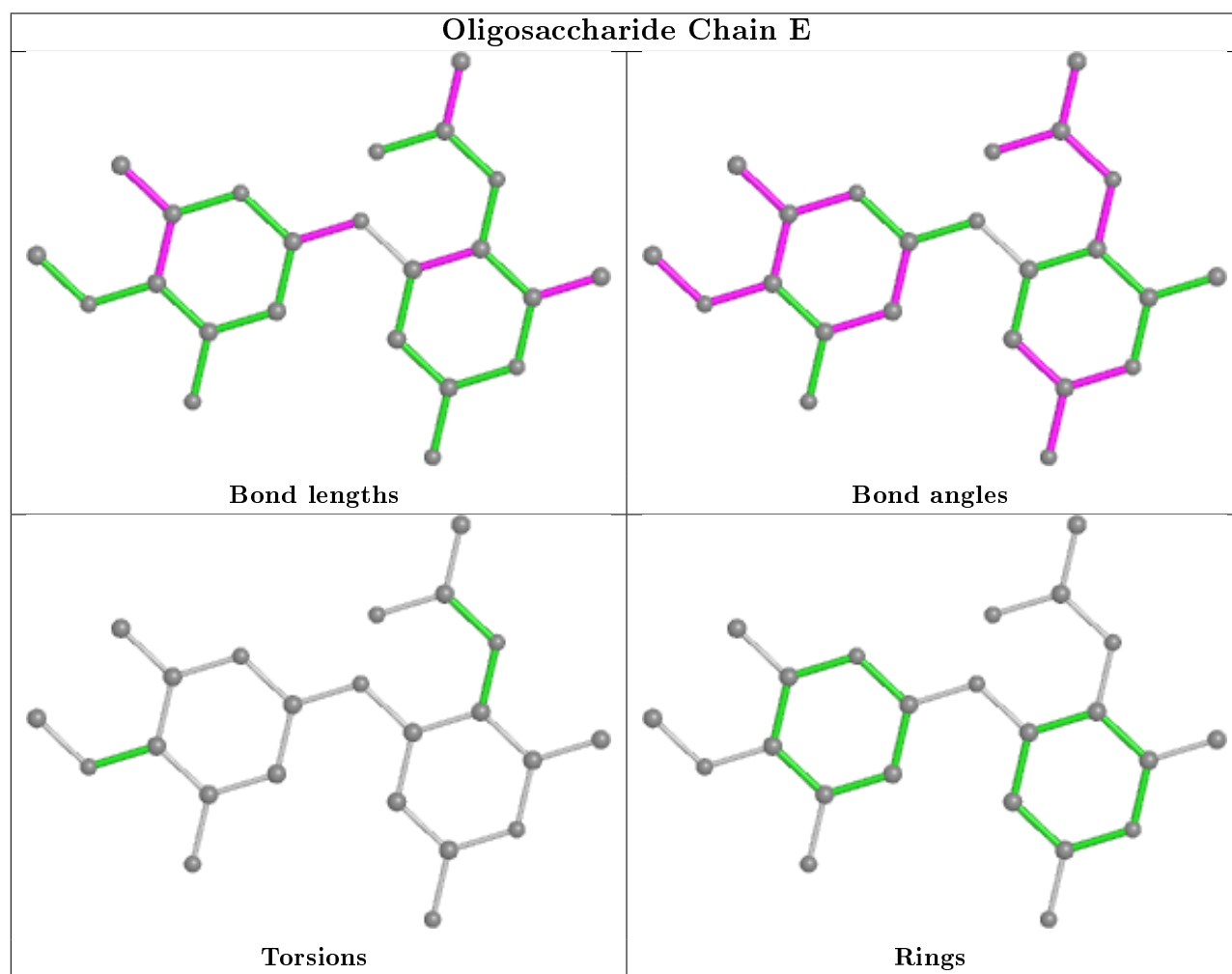
Mol	Chain	Res	Type	Atoms
3	L	3	ERI	CME-CO4-O4-C4
2	F	1	ARI	CME-CO4-O4-C4
2	I	1	ARI	CME-CO4-O4-C4
2	F	1	ARI	OC4-CO4-O4-C4
2	I	1	ARI	OC4-CO4-O4-C4
3	L	3	ERI	OC4-CO4-O4-C4
2	I	1	ARI	C3-C4-O4-CO4
2	I	1	ARI	C5-C4-O4-CO4
2	F	1	ARI	C5-C4-O4-CO4
2	F	1	ARI	C3-C4-O4-CO4
2	K	1	ARI	C5-C4-O4-CO4

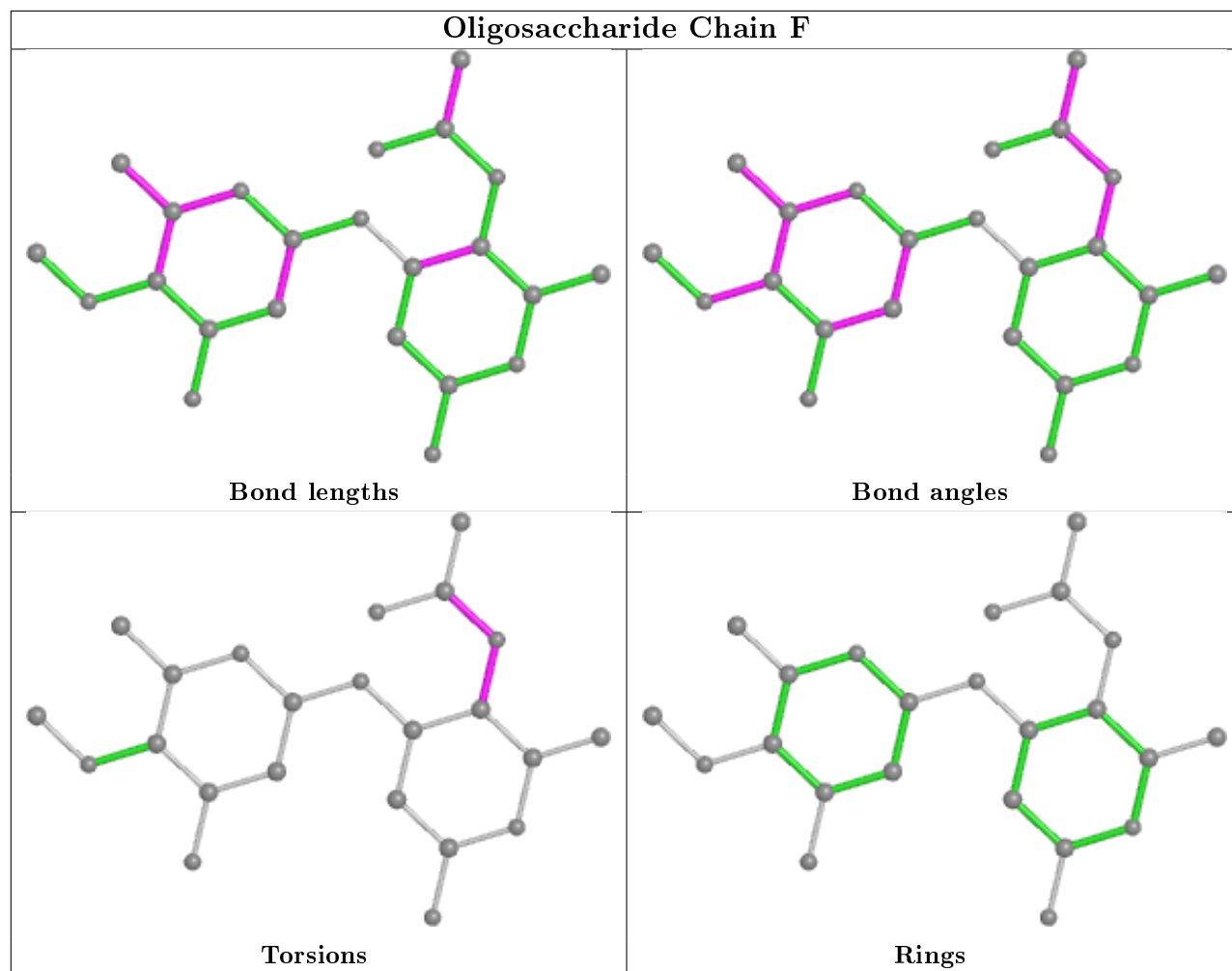
There are no ring outliers.

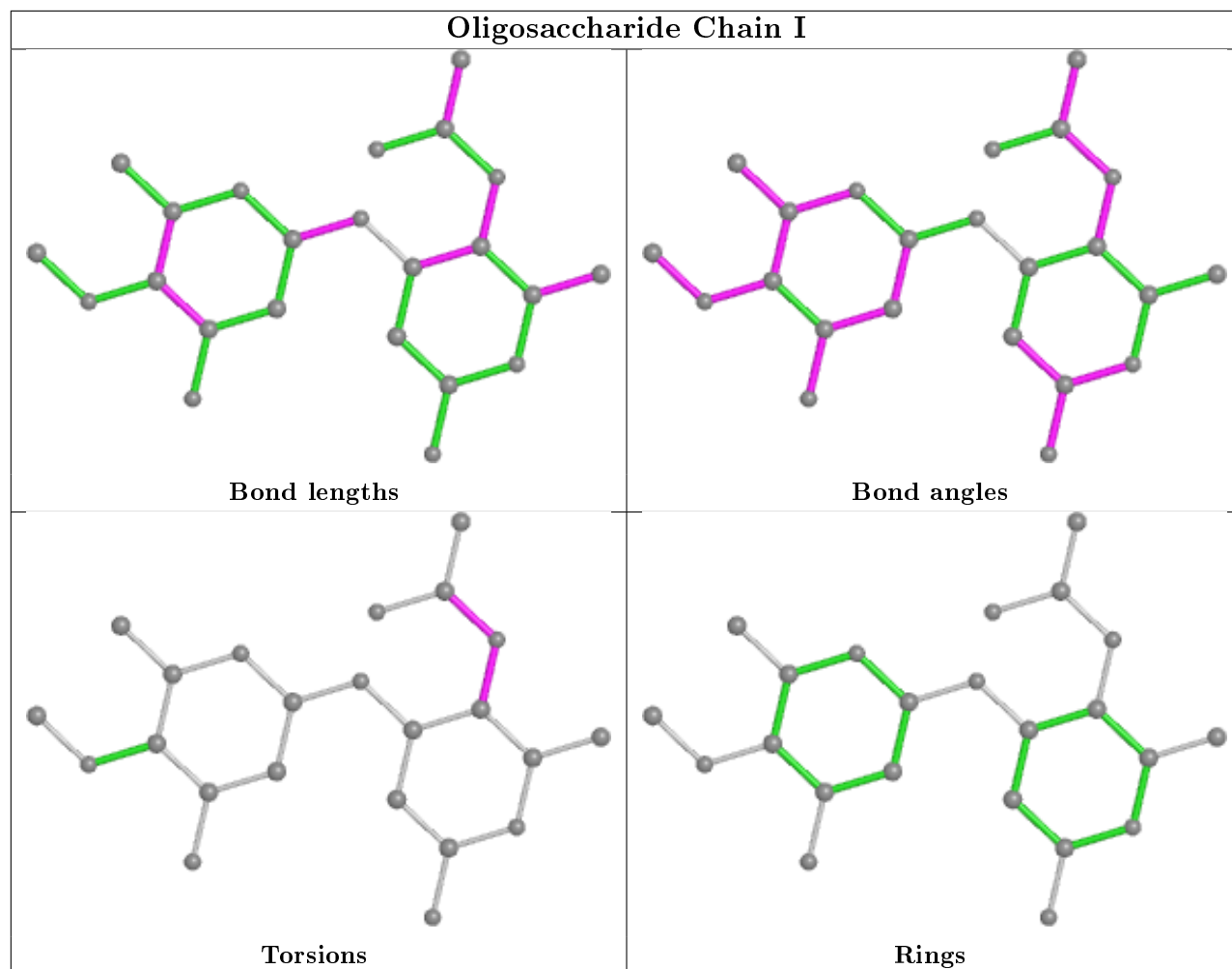
6 monomers are involved in 8 short contacts:

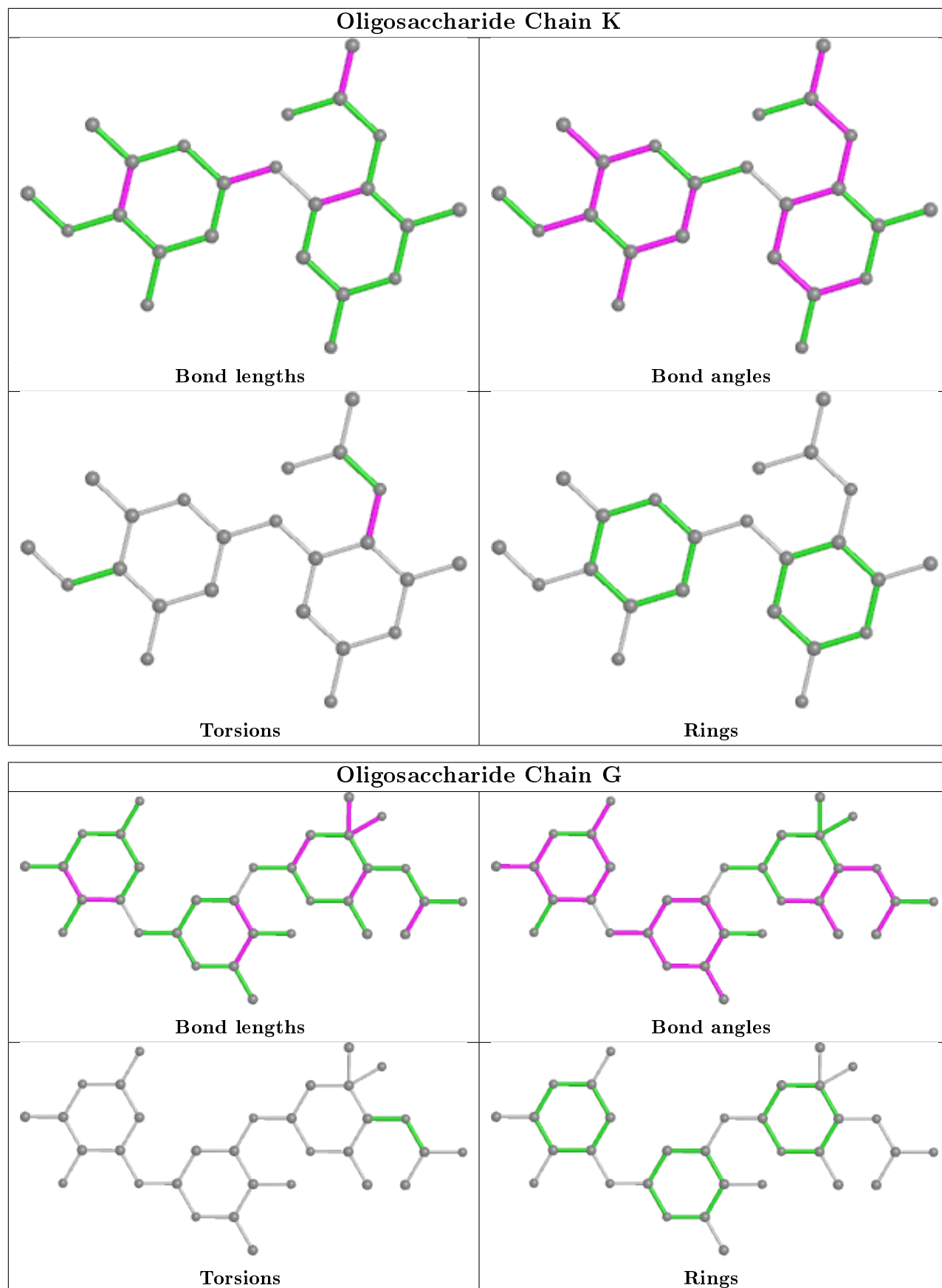
Mol	Chain	Res	Type	Clashes	Symm-Clashes
3	L	2	CDR	2	0
3	G	2	CDR	1	0
3	L	3	ERI	1	0
2	K	2	1GL	1	0
3	J	2	CDR	2	0
2	E	1	ARI	1	0

The following is a two-dimensional graphical depiction of Mogul quality analysis of bond lengths, bond angles, torsion angles, and ring geometry for oligosaccharide.

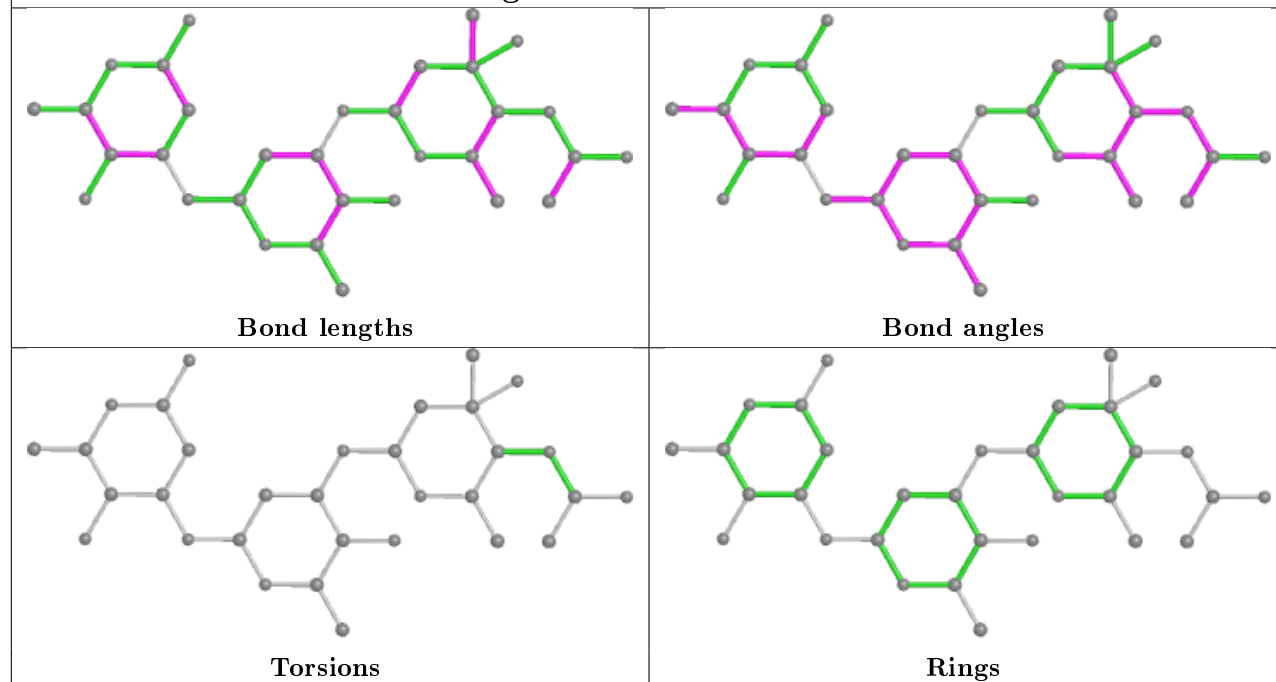




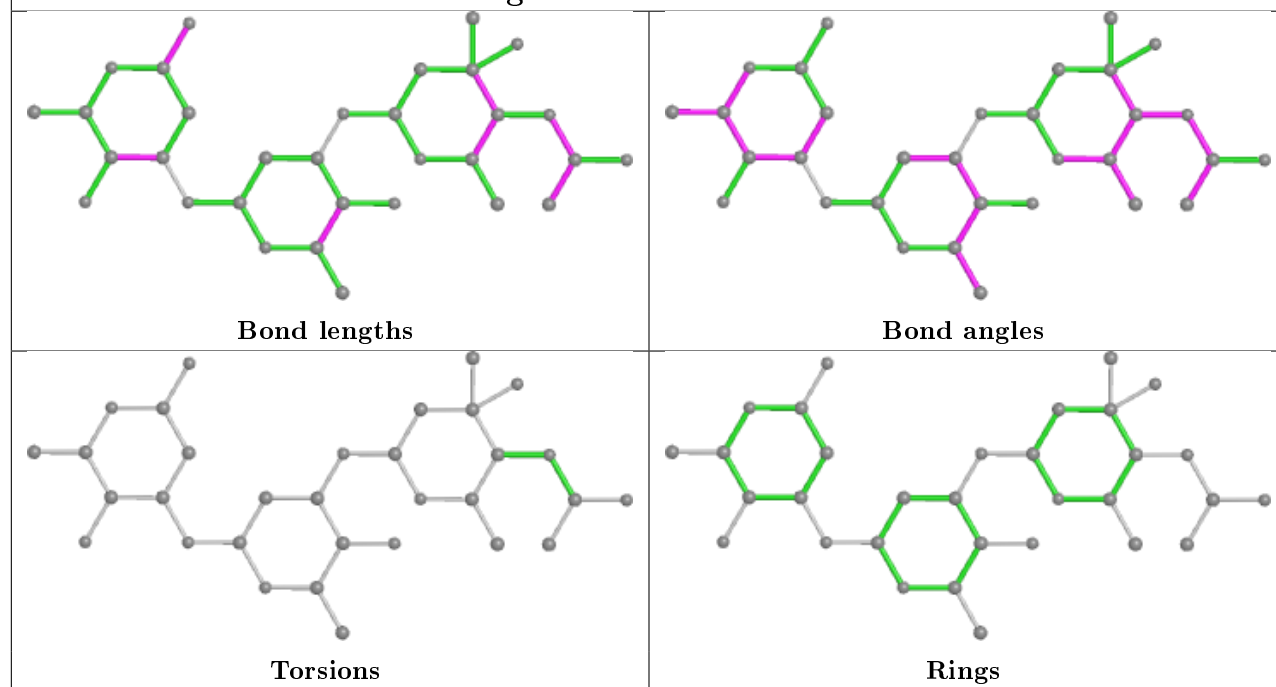


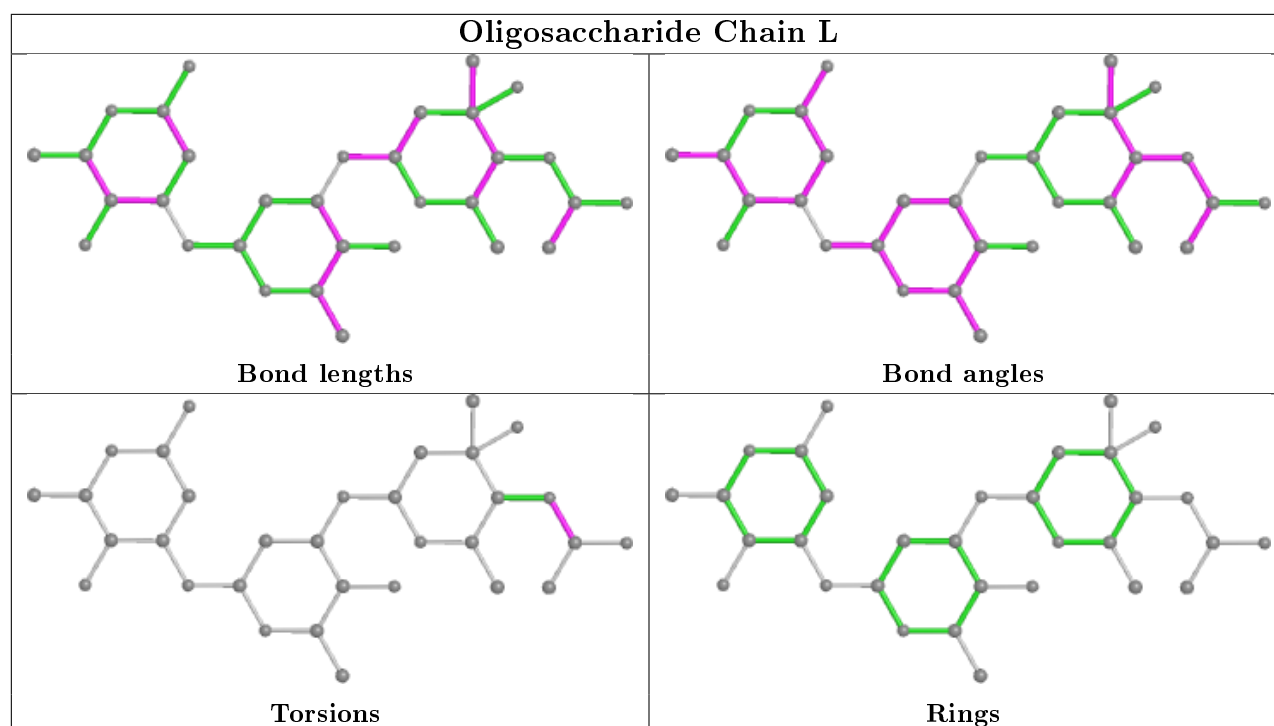


Oligosaccharide Chain H



Oligosaccharide Chain J





5.6 Ligand geometry [i](#)

Of 6 ligands modelled in this entry, 2 are monoatomic - leaving 4 for Mogul analysis.

In the following table, the Counts columns list the number of bonds (or angles) for which Mogul statistics could be retrieved, the number of bonds (or angles) that are observed in the model and the number of bonds (or angles) that are defined in the Chemical Component Dictionary. The Link column lists molecule types, if any, to which the group is linked. The Z score for a bond length (or angle) is the number of standard deviations the observed value is removed from the expected value. A bond length (or angle) with $|Z| > 2$ is considered an outlier worth inspection. RMSZ is the root-mean-square of all Z scores of the bond lengths (or angles).

Mol	Type	Chain	Res	Link	Bond lengths			Bond angles		
					Counts	RMSZ	# Z > 2	Counts	RMSZ	# Z > 2
5	CPH	A	33	3,2,4	29,30,32	2.40	9 (31%)	37,45,49	2.52	10 (27%)
5	CPH	C	73	3,2,4	29,30,32	2.64	12 (41%)	37,45,49	2.63	10 (27%)
5	CPH	B	23	3,2,4	29,30,32	1.71	9 (31%)	37,45,49	2.08	13 (35%)
5	CPH	D	63	3,2,4	29,30,32	2.26	10 (34%)	37,45,49	2.96	12 (32%)

In the following table, the Chirals column lists the number of chiral outliers, the number of chiral centers analysed, the number of these observed in the model and the number defined in the Chemical Component Dictionary. Similar counts are reported in the Torsion and Rings columns. '-' means no outliers of that kind were identified.

Mol	Type	Chain	Res	Link	Chirals	Torsions	Rings
5	CPH	A	33	3,2,4	-	16/18/30/34	0/3/3/3
5	CPH	C	73	3,2,4	-	11/18/30/34	0/3/3/3
5	CPH	B	23	3,2,4	-	9/18/30/34	0/3/3/3
5	CPH	D	63	3,2,4	-	8/18/30/34	0/3/3/3

All (40) bond length outliers are listed below:

Mol	Chain	Res	Type	Atoms	Z	Observed(Å)	Ideal(Å)
5	A	33	CPH	C3-C1'	7.92	1.69	1.52
5	C	73	CPH	C3-C1'	7.69	1.69	1.52
5	D	63	CPH	C3-C1'	7.09	1.67	1.52
5	C	73	CPH	C2-C3	5.43	1.65	1.53
5	B	23	CPH	C8A-C5A	4.77	1.52	1.42
5	A	33	CPH	C10-C4A	4.75	1.46	1.37
5	C	73	CPH	C8A-C5A	4.57	1.52	1.42
5	A	33	CPH	C9A-C9	4.28	1.46	1.39
5	D	63	CPH	C8A-C5A	3.97	1.50	1.42
5	C	73	CPH	C10-C4A	3.85	1.44	1.37
5	D	63	CPH	C2-C3	3.83	1.62	1.53
5	C	73	CPH	O1-C1	3.81	1.28	1.22
5	A	33	CPH	C2-C1	3.49	1.56	1.50
5	C	73	CPH	C2-C1	3.42	1.56	1.50
5	D	63	CPH	C9A-C9	3.20	1.44	1.39
5	A	33	CPH	C8A-C5A	3.04	1.48	1.42
5	C	73	CPH	C5-C6	2.98	1.42	1.36
5	A	33	CPH	C2-C3	2.91	1.60	1.53
5	C	73	CPH	O1'-C1'	2.85	1.51	1.41
5	D	63	CPH	O1'-C1'	2.77	1.51	1.41
5	D	63	CPH	C10-C4A	2.71	1.42	1.37
5	C	73	CPH	O8-C8	2.68	1.44	1.35
5	B	23	CPH	C5-C6	2.65	1.42	1.36
5	D	63	CPH	CC7-C7	-2.62	1.45	1.51
5	A	33	CPH	O1'-C1'	2.44	1.49	1.41
5	D	63	CPH	C2-C1	2.42	1.54	1.50
5	B	23	CPH	C10-C4A	2.42	1.41	1.37
5	C	73	CPH	C4-C4A	-2.38	1.47	1.51
5	D	63	CPH	O3'-C3'	-2.36	1.37	1.42
5	B	23	CPH	O1-C1	2.32	1.26	1.22
5	B	23	CPH	O3'-C3'	-2.30	1.37	1.42
5	C	73	CPH	C9A-C9	2.29	1.43	1.39
5	C	73	CPH	C8-C8A	2.23	1.50	1.43
5	D	63	CPH	C9A-C4A	2.13	1.45	1.41

Continued on next page...

Continued from previous page...

Mol	Chain	Res	Type	Atoms	Z	Observed(Å)	Ideal(Å)
5	A	33	CPH	O8-C8	2.11	1.42	1.35
5	B	23	CPH	O8-C8	2.08	1.42	1.35
5	B	23	CPH	C4-C4A	-2.08	1.47	1.51
5	A	33	CPH	C5-C6	2.06	1.40	1.36
5	B	23	CPH	C5'-C4'	-2.05	1.45	1.51
5	B	23	CPH	O4'-C4'	-2.01	1.37	1.43

All (45) bond angle outliers are listed below:

Mol	Chain	Res	Type	Atoms	Z	Observed(°)	Ideal(°)
5	D	63	CPH	C9-C9A-C1	11.69	123.76	119.50
5	A	33	CPH	C9-C9A-C1	9.50	122.96	119.50
5	C	73	CPH	C9-C9A-C1	8.56	122.62	119.50
5	D	63	CPH	CME-O1'-C1'	5.80	129.71	114.00
5	B	23	CPH	C9-C9A-C1	5.74	121.59	119.50
5	C	73	CPH	CME-O1'-C1'	5.71	129.45	114.00
5	D	63	CPH	C6-C7-C8	5.34	122.89	117.82
5	C	73	CPH	C9-C9A-C4A	-5.31	116.54	119.77
5	D	63	CPH	C9-C9A-C4A	-5.07	116.68	119.77
5	C	73	CPH	C6-C7-C8	4.59	122.17	117.82
5	A	33	CPH	C6-C7-C8	4.52	122.11	117.82
5	A	33	CPH	C9-C9A-C4A	-4.42	117.08	119.77
5	A	33	CPH	CME-O1'-C1'	4.35	125.77	114.00
5	C	73	CPH	C10-C4A-C9A	3.87	125.61	118.63
5	B	23	CPH	C6-C7-C8	3.83	121.45	117.82
5	C	73	CPH	C6-C5-C5A	-3.79	114.95	120.82
5	B	23	CPH	C10-C4A-C9A	3.74	125.39	118.63
5	D	63	CPH	C10-C4A-C9A	3.37	124.71	118.63
5	B	23	CPH	C6-C5-C5A	-3.32	115.68	120.82
5	C	73	CPH	C4-C4A-C10	-3.30	115.38	121.05
5	D	63	CPH	C6-C5-C5A	-3.25	115.78	120.82
5	A	33	CPH	C2-C1-C9A	3.17	122.66	117.12
5	D	63	CPH	C7-C8-C8A	-3.14	115.45	121.82
5	C	73	CPH	C7-C8-C8A	-2.99	115.77	121.82
5	D	63	CPH	C4-C4A-C10	-2.92	116.03	121.05
5	A	33	CPH	C10-C4A-C9A	2.86	123.80	118.63
5	B	23	CPH	O1-C1-C2	-2.78	116.88	120.79
5	A	33	CPH	C4A-C4-C3	2.76	118.58	112.23
5	D	63	CPH	C2-C1-C9A	2.71	121.86	117.12
5	D	63	CPH	C9-C8A-C5A	2.70	120.53	118.11
5	B	23	CPH	C4A-C10-C5A	-2.70	116.50	121.28
5	B	23	CPH	C7-C8-C8A	-2.67	116.42	121.82

Continued on next page...

Continued from previous page...

Mol	Chain	Res	Type	Atoms	Z	Observed(°)	Ideal(°)
5	A	33	CPH	C7-C8-C8A	-2.66	116.44	121.82
5	D	63	CPH	O8-C8-C7	2.58	126.42	118.92
5	C	73	CPH	C5-C6-C7	2.55	126.17	122.30
5	D	63	CPH	O1-C1-C2	-2.54	117.22	120.79
5	B	23	CPH	C2-C1-C9A	2.54	121.56	117.12
5	B	23	CPH	C8-C8A-C5A	2.37	120.23	118.11
5	A	33	CPH	O8-C8-C7	2.29	125.58	118.92
5	A	33	CPH	CC7-C7-C6	-2.26	115.91	120.31
5	B	23	CPH	C9-C8A-C5A	2.17	120.06	118.11
5	C	73	CPH	C2-C1-C9A	2.16	120.90	117.12
5	B	23	CPH	O3'-C3'-C2'	-2.13	107.14	110.85
5	B	23	CPH	O8-C8-C7	2.10	125.02	118.92
5	B	23	CPH	C9-C9A-C4A	-2.03	118.54	119.77

There are no chirality outliers.

All (44) torsion outliers are listed below:

Mol	Chain	Res	Type	Atoms
5	B	23	CPH	O1'-C1'-C3-C2
5	B	23	CPH	C2'-C1'-C3-C2
5	B	23	CPH	O1'-C1'-C3-C4
5	B	23	CPH	C2'-C1'-C3-C4
5	B	23	CPH	C1'-C2'-C3'-O3'
5	B	23	CPH	O2'-C2'-C3'-O3'
5	C	73	CPH	O1'-C1'-C3-C2
5	C	73	CPH	C2'-C1'-C3-C2
5	C	73	CPH	O1'-C1'-C3-C4
5	C	73	CPH	C2'-C1'-C3-C4
5	C	73	CPH	C3-C1'-C2'-C3'
5	C	73	CPH	C2'-C3'-C4'-O4'
5	C	73	CPH	C2'-C3'-C4'-C5'
5	C	73	CPH	O3'-C3'-C4'-O4'
5	C	73	CPH	O3'-C3'-C4'-C5'
5	A	33	CPH	O1'-C1'-C3-C2
5	A	33	CPH	C2'-C1'-C3-C2
5	A	33	CPH	O1'-C1'-C3-C4
5	A	33	CPH	C2'-C1'-C3-C4
5	A	33	CPH	C3-C1'-O1'-CME
5	A	33	CPH	C2'-C1'-O1'-CME
5	A	33	CPH	C1'-C2'-C3'-C4'
5	A	33	CPH	O2'-C2'-C3'-O3'
5	A	33	CPH	O2'-C2'-C3'-C4'

Continued on next page...

Continued from previous page...

Mol	Chain	Res	Type	Atoms
5	A	33	CPH	C2'-C3'-C4'-C5'
5	A	33	CPH	O3'-C3'-C4'-C5'
5	D	63	CPH	O1'-C1'-C3-C2
5	D	63	CPH	C2'-C1'-C3-C2
5	D	63	CPH	O1'-C1'-C3-C4
5	D	63	CPH	C2'-C1'-C3-C4
5	D	63	CPH	C1'-C2'-C3'-O3'
5	D	63	CPH	O2'-C2'-C3'-O3'
5	A	33	CPH	C2'-C3'-C4'-O4'
5	B	23	CPH	O3'-C3'-C4'-C5'
5	B	23	CPH	O1'-C1'-C2'-O2'
5	D	63	CPH	O1'-C1'-C2'-O2'
5	A	33	CPH	C1'-C2'-C3'-O3'
5	B	23	CPH	O3'-C3'-C4'-O4'
5	A	33	CPH	O3'-C3'-C4'-O4'
5	D	63	CPH	O3'-C3'-C4'-C5'
5	A	33	CPH	O1'-C1'-C2'-O2'
5	C	73	CPH	O1'-C1'-C2'-C3'
5	A	33	CPH	O1'-C1'-C2'-C3'
5	C	73	CPH	C3-C1'-C2'-O2'

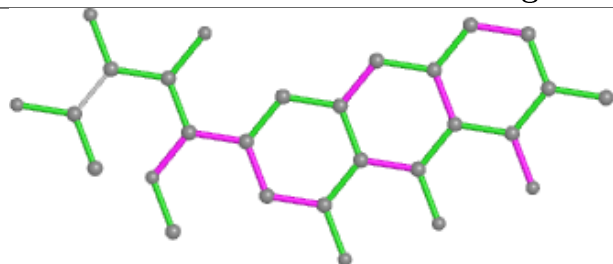
There are no ring outliers.

4 monomers are involved in 21 short contacts:

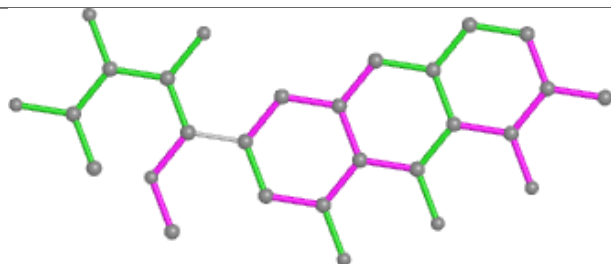
Mol	Chain	Res	Type	Clashes	Symm-Clashes
5	A	33	CPH	3	0
5	C	73	CPH	8	0
5	B	23	CPH	6	0
5	D	63	CPH	4	0

The following is a two-dimensional graphical depiction of Mogul quality analysis of bond lengths, bond angles, torsion angles, and ring geometry for all instances of the Ligand of Interest. In addition, ligands with molecular weight > 250 and outliers as shown on the validation Tables will also be included. For torsion angles, if less than 5% of the Mogul distribution of torsion angles is within 10 degrees of the torsion angle in question, then that torsion angle is considered an outlier. Any bond that is central to one or more torsion angles identified as an outlier by Mogul will be highlighted in the graph. For rings, the root-mean-square deviation (RMSD) between the ring in question and similar rings identified by Mogul is calculated over all ring torsion angles. If the average RMSD is greater than 60 degrees and the minimal RMSD between the ring in question and any Mogul-identified rings is also greater than 60 degrees, then that ring is considered an outlier. The outliers are highlighted in purple. The color gray indicates Mogul did not find sufficient equivalents in the CSD to analyse the geometry.

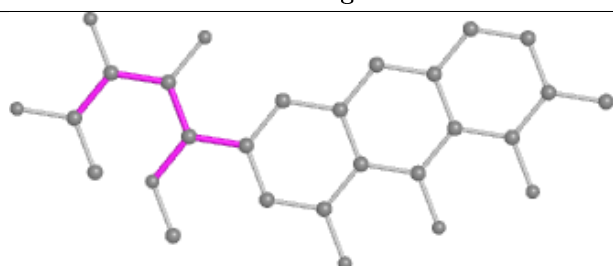
Ligand CPH A 33



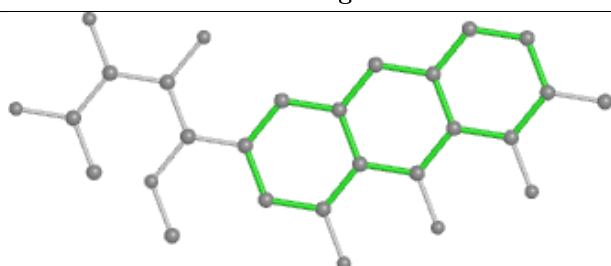
Bond lengths



Bond angles

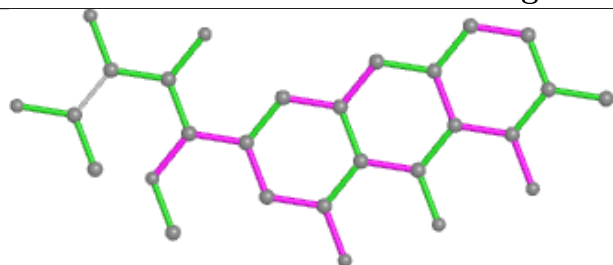


Torsions

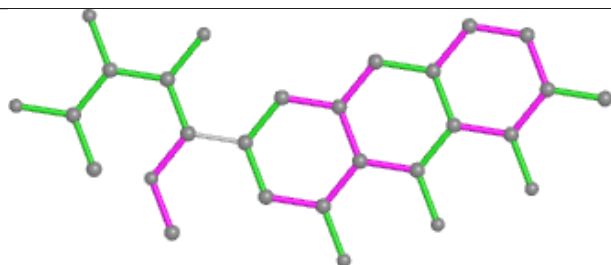


Rings

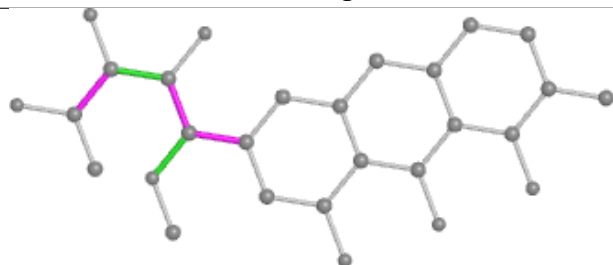
Ligand CPH C 73



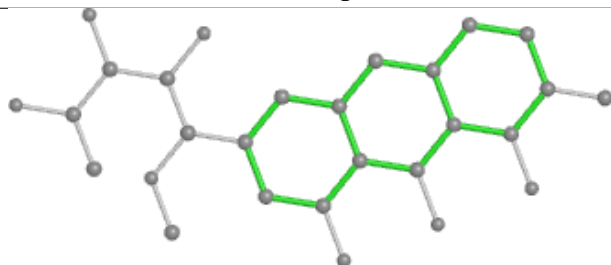
Bond lengths



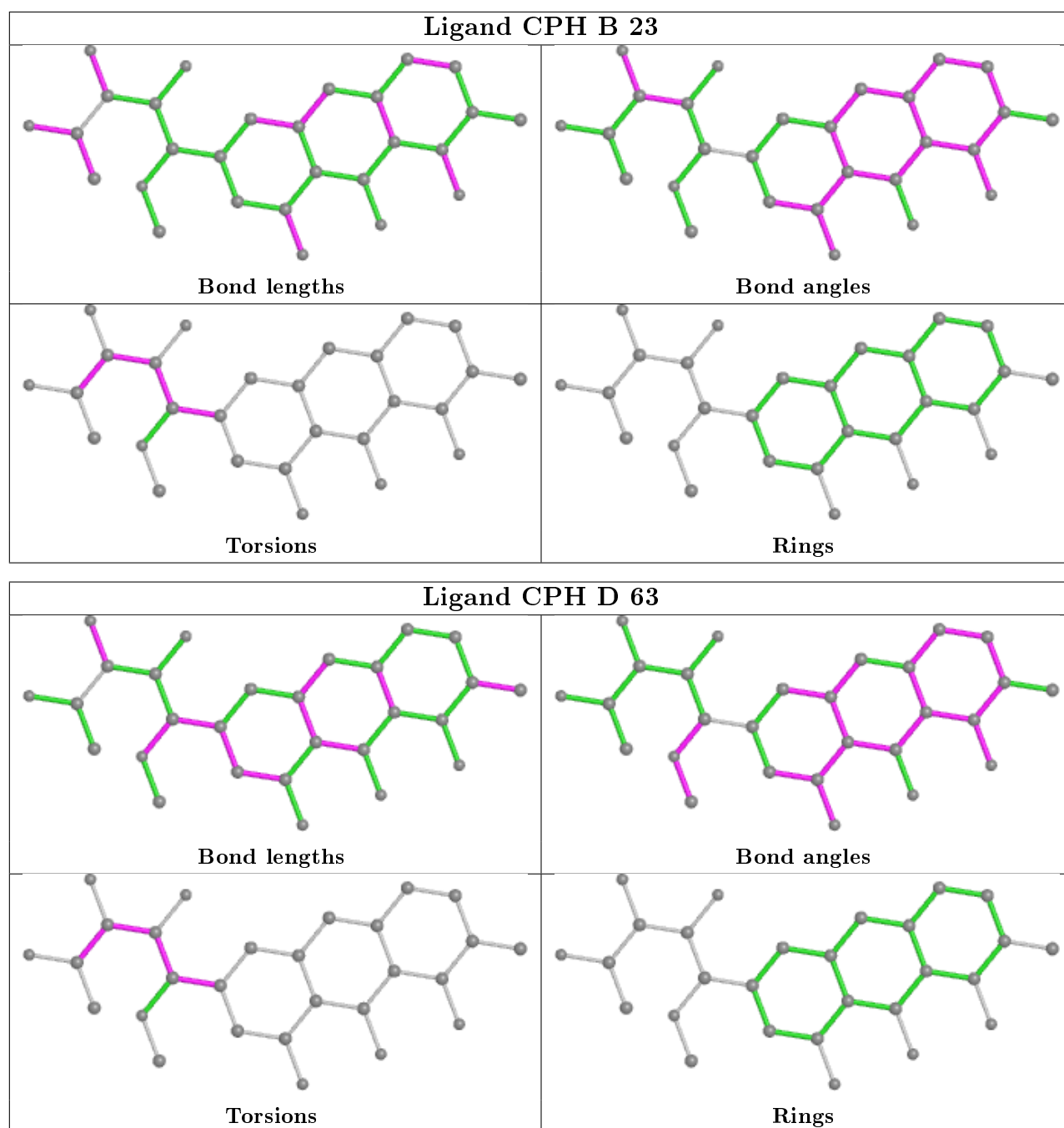
Bond angles



Torsions



Rings



5.7 Other polymers [i](#)

There are no such residues in this entry.

5.8 Polymer linkage issues [i](#)

There are no chain breaks in this entry.

6 Fit of model and data [i](#)

6.1 Protein, DNA and RNA chains [i](#)

In the following table, the column labelled ‘#RSRZ> 2’ contains the number (and percentage) of RSRZ outliers, followed by percent RSRZ outliers for the chain as percentile scores relative to all X-ray entries and entries of similar resolution. The OWAB column contains the minimum, median, 95th percentile and maximum values of the occupancy-weighted average B-factor per residue. The column labelled ‘Q< 0.9’ lists the number of (and percentage) of residues with an average occupancy less than 0.9.

Mol	Chain	Analysed	<RSRZ>	#RSRZ>2	OWAB(Å ²)	Q<0.9
1	A	8/8 (100%)	-0.25	0 100 100	11, 16, 20, 24	0
1	B	8/8 (100%)	-0.32	0 100 100	9, 14, 16, 18	0
1	C	8/8 (100%)	-0.11	0 100 100	12, 13, 28, 29	0
1	D	8/8 (100%)	-0.22	0 100 100	10, 14, 15, 17	0
All	All	32/32 (100%)	-0.22	0 100 100	9, 14, 24, 29	0

There are no RSRZ outliers to report.

6.2 Non-standard residues in protein, DNA, RNA chains [i](#)

There are no non-standard protein/DNA/RNA residues in this entry.

6.3 Carbohydrates [i](#)

In the following table, the Atoms column lists the number of modelled atoms in the group and the number defined in the chemical component dictionary. The B-factors column lists the minimum, median, 95th percentile and maximum values of B factors of atoms in the group. The column labelled ‘Q< 0.9’ lists the number of atoms with occupancy less than 0.9.

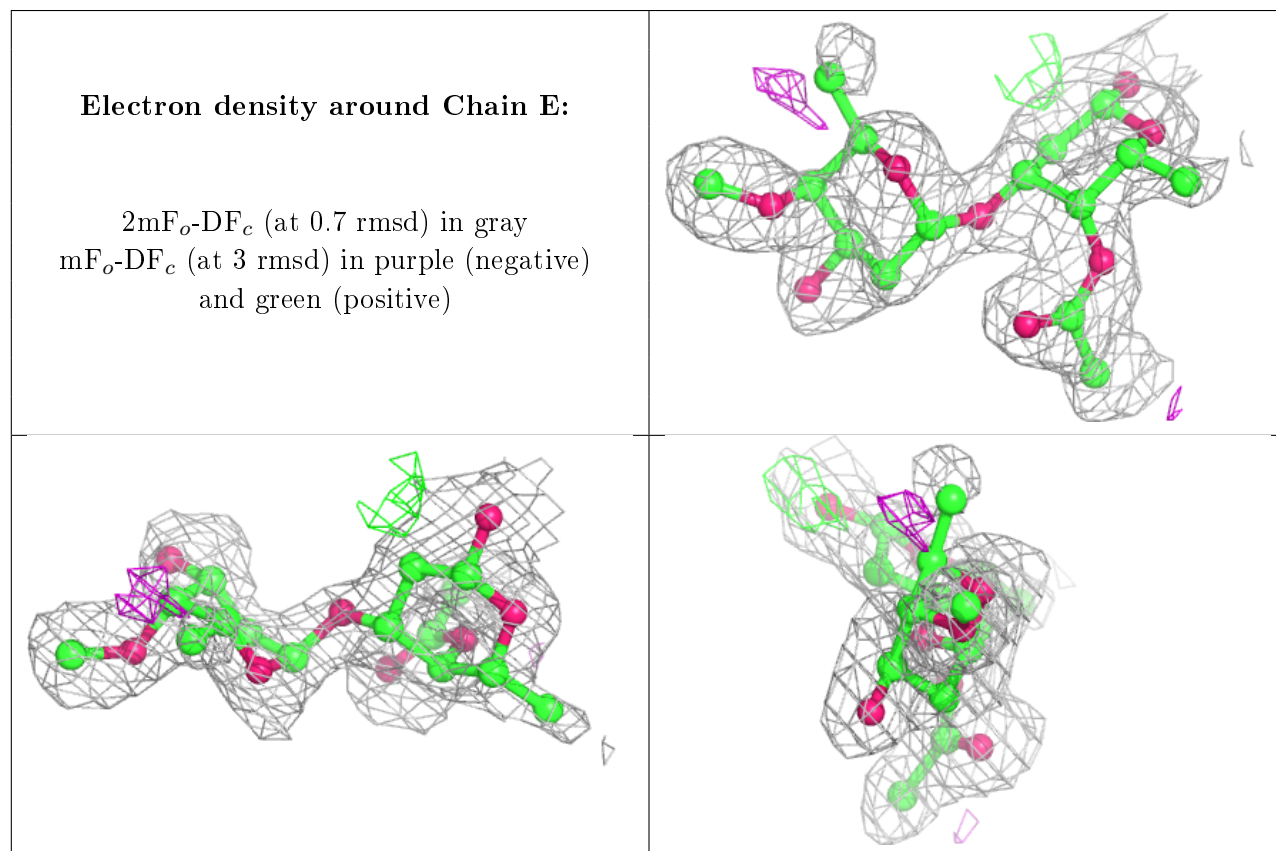
Mol	Type	Chain	Res	Atoms	RSCC	RSR	B-factors(Å ²)	Q<0.9
2	1GL	E	2	11/11	0.81	0.20	3,24,35,38	0
2	1GL	I	2	11/11	0.87	0.19	6,13,21,23	0
3	CDR	H	2	9/9	0.89	0.16	5,10,14,15	0
2	ARI	E	1	12/12	0.90	0.15	5,13,17,20	0
3	ERI	L	3	14/14	0.91	0.14	4,10,19,23	0
2	1GL	F	2	11/11	0.91	0.13	5,12,17,19	0
3	ERI	G	3	14/14	0.92	0.13	3,9,16,26	0
2	ARI	I	1	12/12	0.92	0.12	4,12,18,20	0
3	CDR	L	1	9/9	0.93	0.13	1,11,13,20	0

Continued on next page...

Continued from previous page...

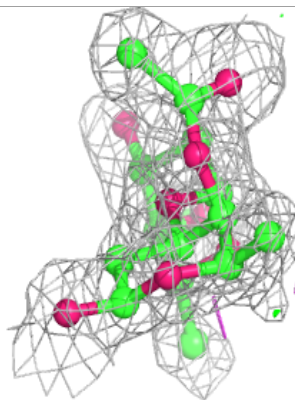
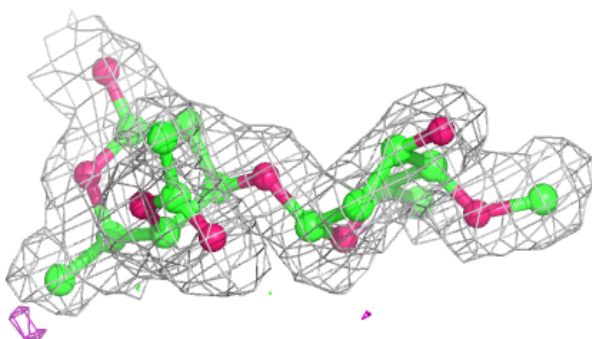
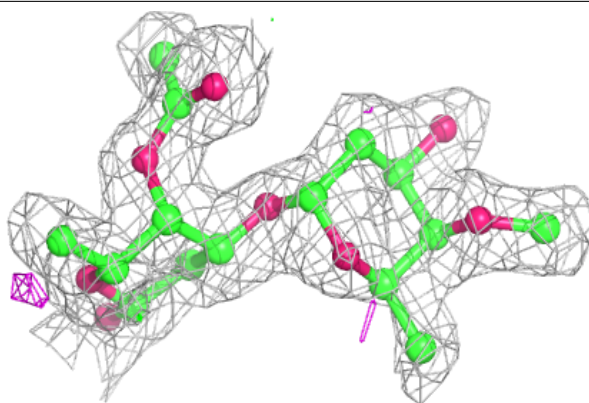
Mol	Type	Chain	Res	Atoms	RSCC	RSR	B-factors(\AA^2)	Q<0.9
3	CDR	L	2	9/9	0.93	0.12	3,8,15,16	0
3	CDR	J	1	9/9	0.93	0.13	3,8,18,20	0
2	1GL	K	2	11/11	0.94	0.13	4,18,27,30	0
3	CDR	H	1	9/9	0.94	0.12	1,4,13,15	0
3	CDR	G	2	9/9	0.94	0.11	4,8,14,19	0
2	ARI	K	1	12/12	0.95	0.10	3,12,16,18	0
3	ERI	J	3	14/14	0.95	0.11	1,6,13,20	0
2	ARI	F	1	12/12	0.95	0.10	1,13,20,21	0
3	ERI	H	3	14/14	0.95	0.13	1,9,16,17	0
3	CDR	G	1	9/9	0.95	0.10	3,4,10,12	0
3	CDR	J	2	9/9	0.96	0.10	3,5,10,13	0

The following is a graphical depiction of the model fit to experimental electron density for oligosaccharide. Each fit is shown from different orientation to approximate a three-dimensional view.

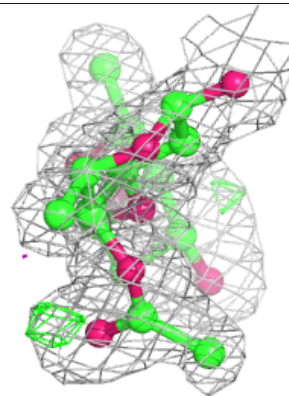
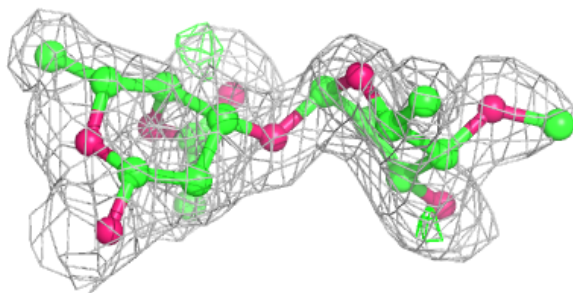
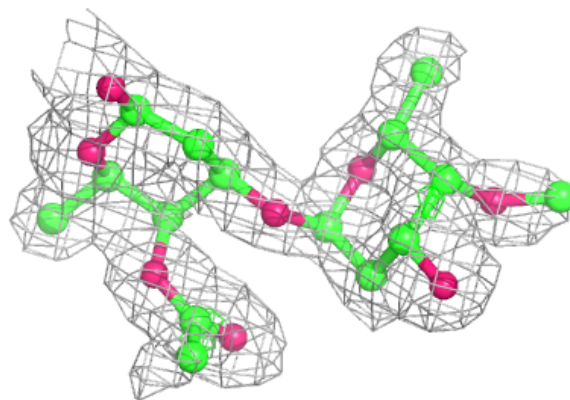


Electron density around Chain F:

$2mF_o - DF_c$ (at 0.7 rmsd) in gray
 $mF_o - DF_c$ (at 3 rmsd) in purple (negative)
and green (positive)

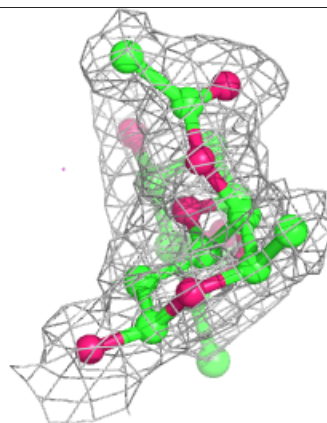
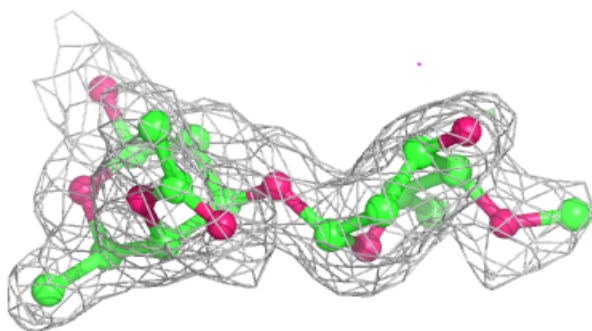
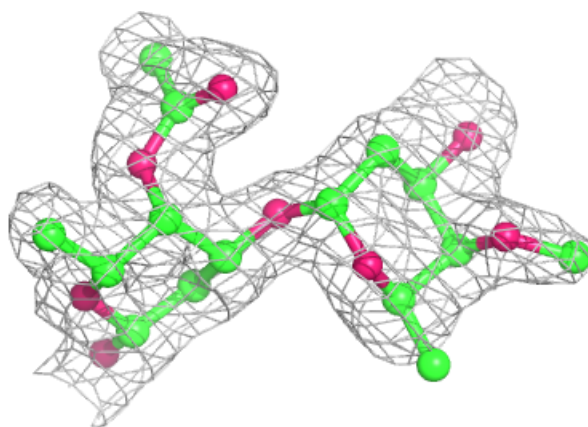
**Electron density around Chain I:**

$2mF_o - DF_c$ (at 0.7 rmsd) in gray
 $mF_o - DF_c$ (at 3 rmsd) in purple (negative)
and green (positive)

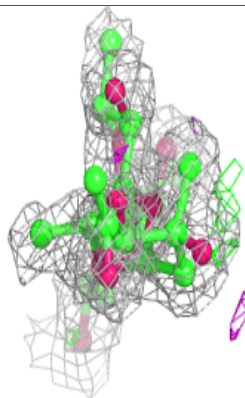
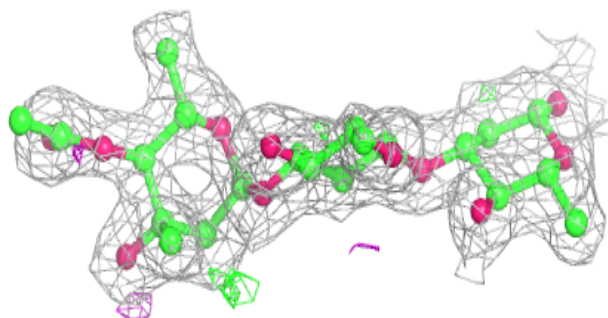
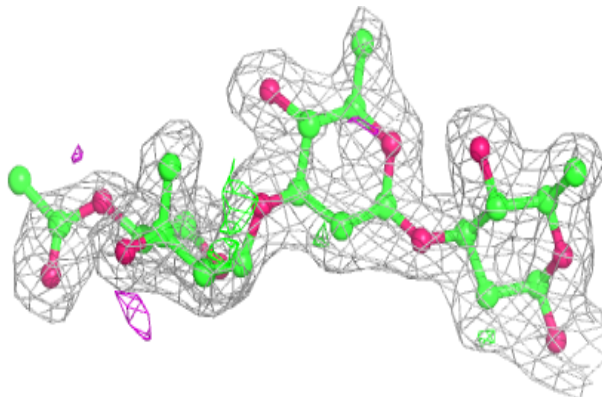


Electron density around Chain K:

$2mF_o-DF_c$ (at 0.7 rmsd) in gray
 mF_o-DF_c (at 3 rmsd) in purple (negative)
and green (positive)

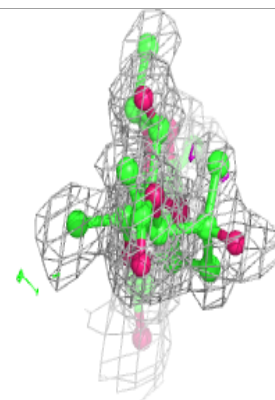
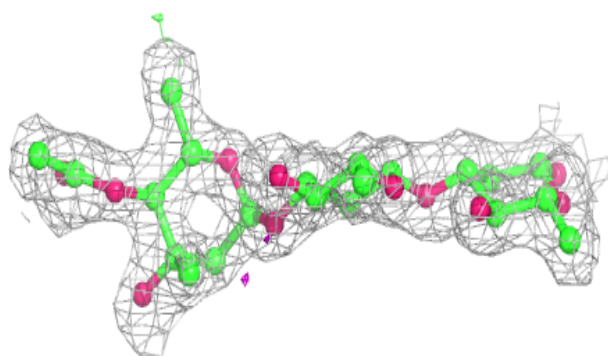
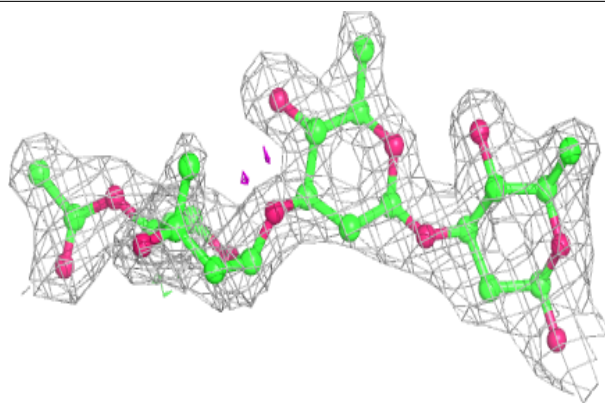
**Electron density around Chain G:**

$2mF_o-DF_c$ (at 0.7 rmsd) in gray
 mF_o-DF_c (at 3 rmsd) in purple (negative)
and green (positive)

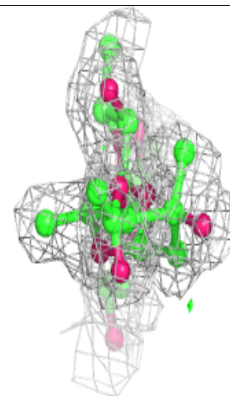
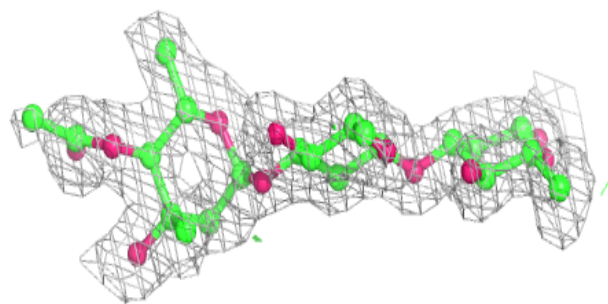
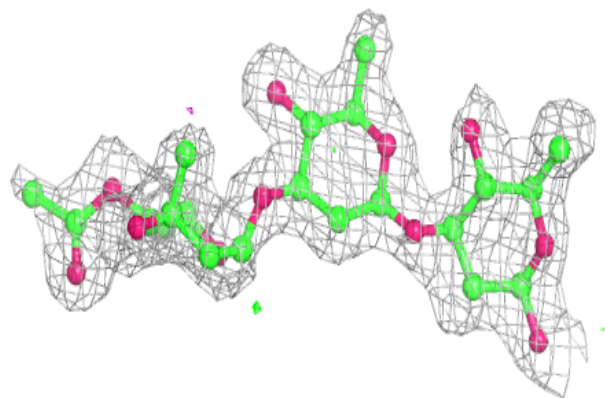


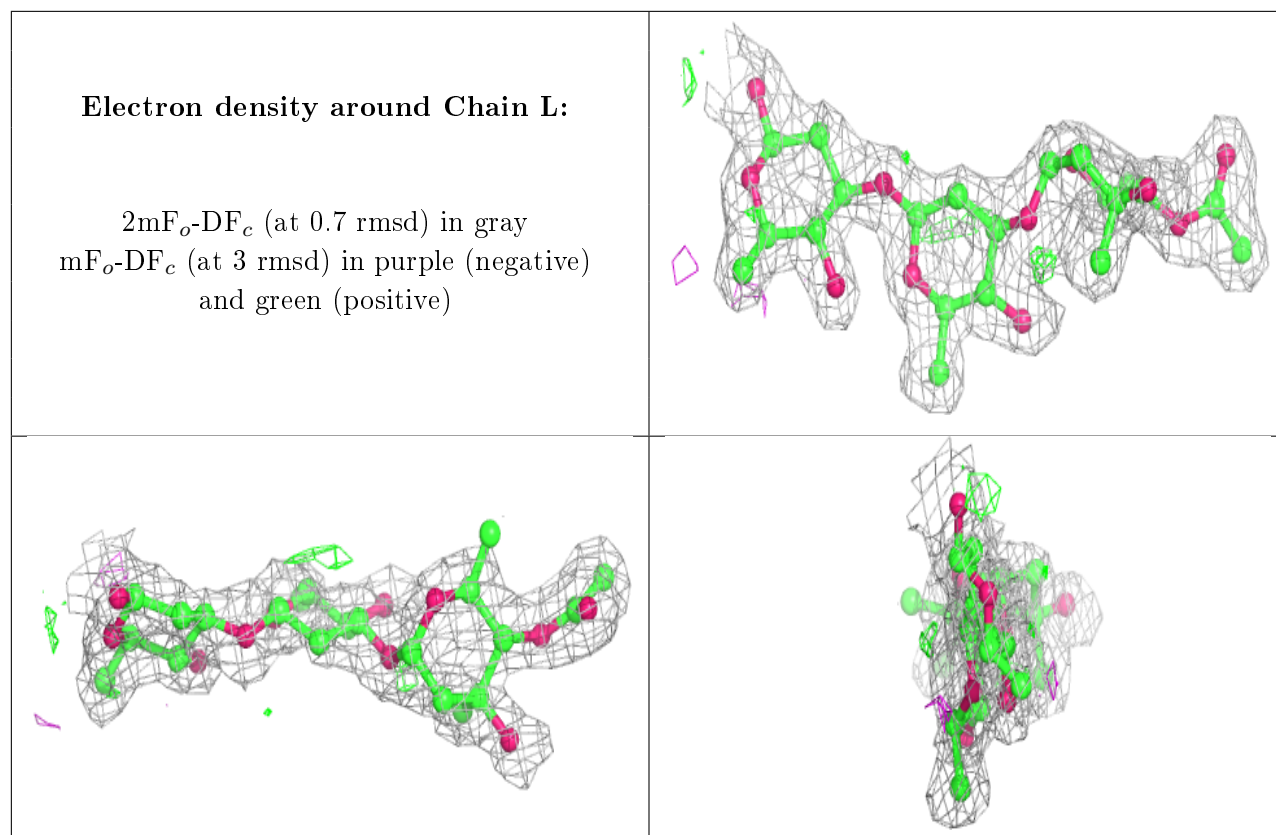
Electron density around Chain H:

$2mF_o-DF_c$ (at 0.7 rmsd) in gray
 mF_o-DF_c (at 3 rmsd) in purple (negative)
and green (positive)

**Electron density around Chain J:**

$2mF_o-DF_c$ (at 0.7 rmsd) in gray
 mF_o-DF_c (at 3 rmsd) in purple (negative)
and green (positive)





6.4 Ligands ⓘ

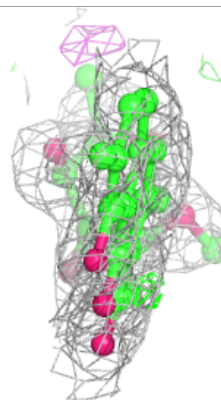
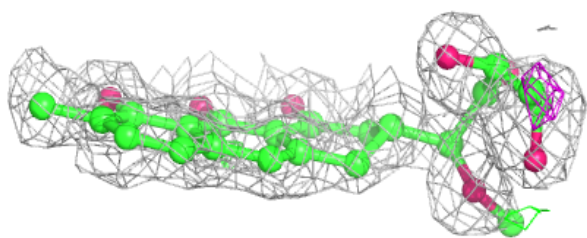
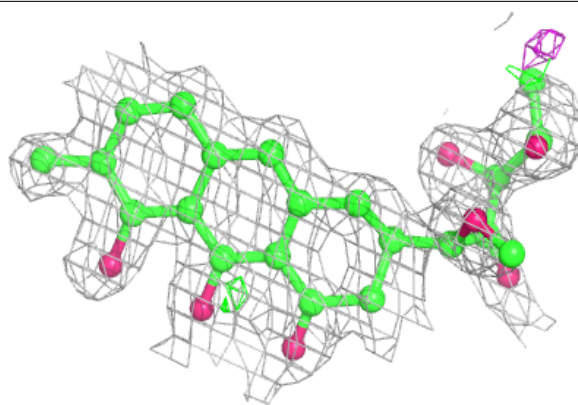
In the following table, the Atoms column lists the number of modelled atoms in the group and the number defined in the chemical component dictionary. The B-factors column lists the minimum, median, 95th percentile and maximum values of B factors of atoms in the group. The column labelled 'Q< 0.9' lists the number of atoms with occupancy less than 0.9.

Mol	Type	Chain	Res	Atoms	RSCC	RSR	B-factors(Å ²)	Q<0.9
5	CPH	B	23	28/30	0.91	0.15	1,10,32,39	0
5	CPH	C	73	28/30	0.91	0.15	2,12,23,49	0
5	CPH	A	33	28/30	0.91	0.17	4,13,36,59	0
5	CPH	D	63	28/30	0.91	0.15	1,12,43,52	0
4	MG	D	82	1/1	0.97	0.05	9,9,9,9	0
4	MG	A	81	1/1	0.98	0.07	5,5,5,5	0

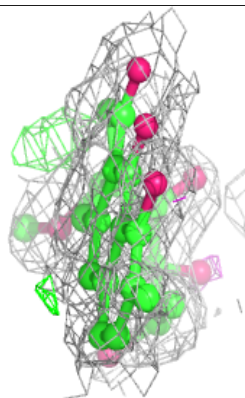
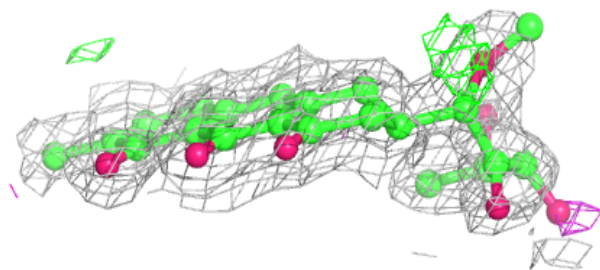
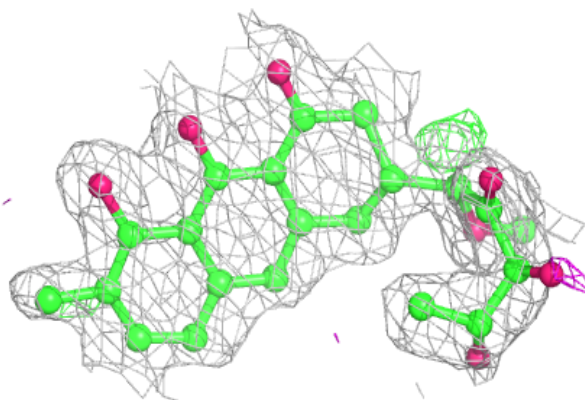
The following is a graphical depiction of the model fit to experimental electron density of all instances of the Ligand of Interest. In addition, ligands with molecular weight > 250 and outliers as shown on the geometry validation Tables will also be included. Each fit is shown from different orientation to approximate a three-dimensional view.

Electron density around CPH B 23:

$2mF_o-DF_c$ (at 0.7 rmsd) in gray
 mF_o-DF_c (at 3 rmsd) in purple (negative)
and green (positive)

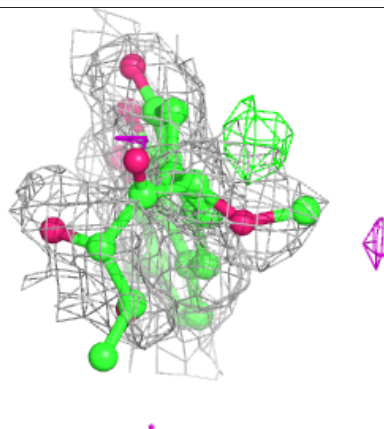
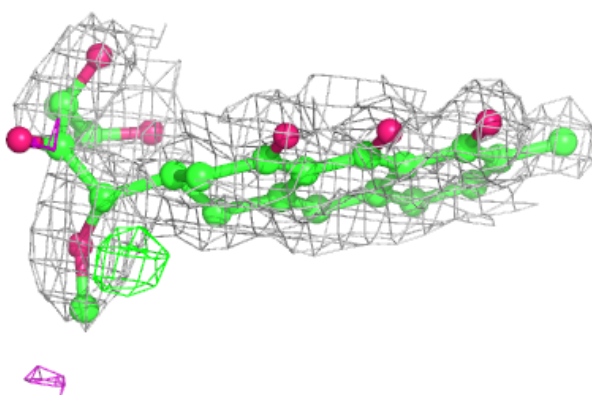
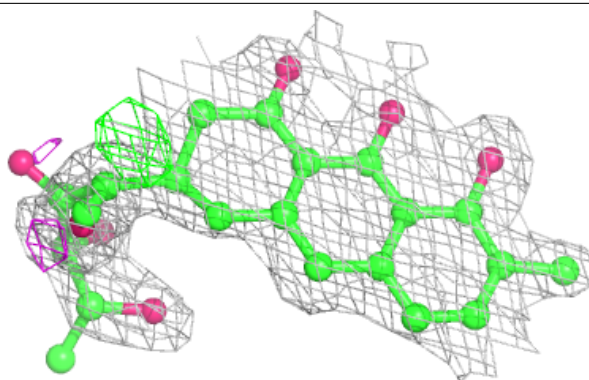
**Electron density around CPH C 73:**

$2mF_o-DF_c$ (at 0.7 rmsd) in gray
 mF_o-DF_c (at 3 rmsd) in purple (negative)
and green (positive)

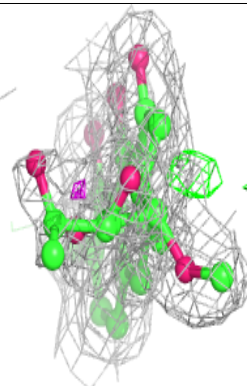
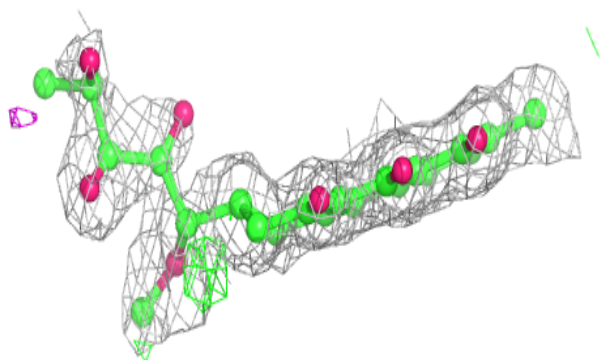
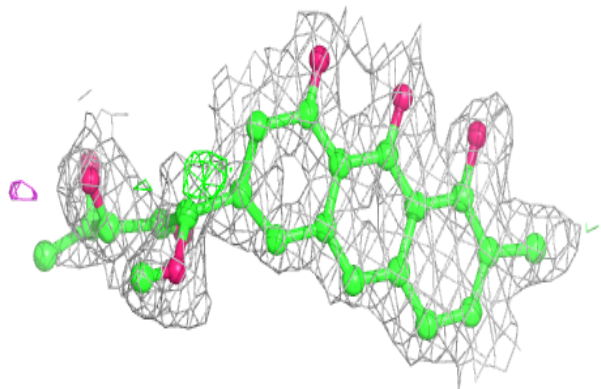


Electron density around CPH A 33:

$2mF_o-DF_c$ (at 0.7 rmsd) in gray
 mF_o-DF_c (at 3 rmsd) in purple (negative)
and green (positive)

**Electron density around CPH D 63:**

$2mF_o-DF_c$ (at 0.7 rmsd) in gray
 mF_o-DF_c (at 3 rmsd) in purple (negative)
and green (positive)



6.5 Other polymers

There are no such residues in this entry.