



Full wwPDB X-ray Structure Validation Report ⓘ

Aug 6, 2020 – 11:19 AM BST

PDB ID : 2VDK
Title : Re-refinement of Integrin AlphaIIbBeta3 Headpiece
Authors : Springer, T.A.; Zhu, J.; Xiao, T.
Deposited on : 2007-10-10
Resolution : 2.80 Å(reported)

This is a Full wwPDB X-ray Structure Validation Report for a publicly released PDB entry.

We welcome your comments at validation@mail.wwpdb.org

A user guide is available at

<https://www.wwpdb.org/validation/2017/XrayValidationReportHelp>

with specific help available everywhere you see the ⓘ symbol.

The following versions of software and data (see [references ⓘ](#)) were used in the production of this report:

MolProbity : 4.02b-467
Mogul : 1.8.5 (274361), CSD as541be (2020)
Xtriage (Phenix) : 1.13
EDS : 2.13.1
Percentile statistics : 20191225.v01 (using entries in the PDB archive December 25th 2019)
Refmac : 5.8.0158
CCP4 : 7.0.044 (Gargrove)
Ideal geometry (proteins) : Engh & Huber (2001)
Ideal geometry (DNA, RNA) : Parkinson et al. (1996)
Validation Pipeline (wwPDB-VP) : 2.13.1

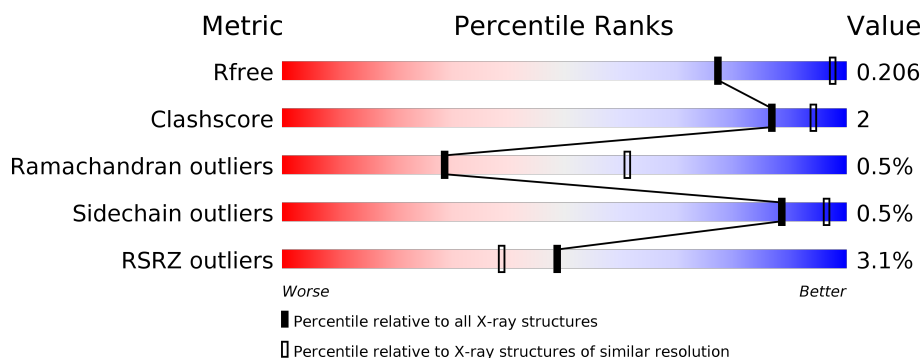
1 Overall quality at a glance

The following experimental techniques were used to determine the structure:

X-RAY DIFFRACTION

The reported resolution of this entry is 2.80 Å.

Percentile scores (ranging between 0-100) for global validation metrics of the entry are shown in the following graphic. The table shows the number of entries on which the scores are based.



Metric	Whole archive (#Entries)	Similar resolution (#Entries, resolution range(Å))
R_{free}	130704	3140 (2.80-2.80)
Clashscore	141614	3569 (2.80-2.80)
Ramachandran outliers	138981	3498 (2.80-2.80)
Sidechain outliers	138945	3500 (2.80-2.80)
RSRZ outliers	127900	3078 (2.80-2.80)

The table below summarises the geometric issues observed across the polymeric chains and their fit to the electron density. The red, orange, yellow and green segments on the lower bar indicate the fraction of residues that contain outliers for ≥ 3 , 2, 1 and 0 types of geometric quality criteria respectively. A grey segment represents the fraction of residues that are not modelled. The numeric value for each fraction is indicated below the corresponding segment, with a dot representing fractions $\leq 5\%$. The upper red bar (where present) indicates the fraction of residues that have poor fit to the electron density. The numeric value is given above the bar.

Mol	Chain	Length	Quality of chain
1	A	452	<div> <div>%</div> <div> <div></div> <div>93%</div> <div>7%</div> </div> </div>
2	B	461	<div> <div>8%</div> <div> <div></div> <div>92%</div> <div>7%</div> </div> </div>
3	H	221	<div> <div>%</div> <div> <div></div> <div>97%</div> <div>..</div> </div> </div>
4	L	214	<div> <div></div> <div> <div></div> <div>96%</div> <div>.</div> </div> </div>
5	C	5	<div> <div></div> <div> <div></div> <div>60%</div> <div>40%</div> </div> </div>
6	D	7	<div> <div></div> <div> <div></div> <div>57%</div> <div>43%</div> </div> </div>

The following table lists non-polymeric compounds, carbohydrate monomers and non-standard residues in protein, DNA, RNA chains that are outliers for geometric or electron-density-fit criteria:

Mol	Type	Chain	Res	Chirality	Geometry	Clashes	Electron density
5	MAN	C	3	X	-	-	X
6	MAN	D	3	X	-	-	-
9	NAG	A	3015	-	-	-	X
9	NAG	A	3249	-	-	-	X
9	NAG	B	3099	-	-	-	X

2 Entry composition

There are 12 unique types of molecules in this entry. The entry contains 11225 atoms, of which 0 are hydrogens and 0 are deuteriums.

In the tables below, the ZeroOcc column contains the number of atoms modelled with zero occupancy, the AltConf column contains the number of residues with at least one atom in alternate conformation and the Trace column contains the number of residues modelled with at most 2 atoms.

- Molecule 1 is a protein called INTEGRIN ALPHA-IIB.

Mol	Chain	Residues	Atoms					ZeroOcc	AltConf	Trace
1	A	452	Total	C	N	O	S	0	9	0
			3525	2240	612	665	8			

There is a discrepancy between the modelled and reference sequences:

Chain	Residue	Modelled	Actual	Comment	Reference
A	282	GLY	ALA	SEE REMARK 999	UNP P08514

- Molecule 2 is a protein called INTEGRIN BETA-3.

Mol	Chain	Residues	Atoms					ZeroOcc	AltConf	Trace
2	B	455	Total	C	N	O	S	0	7	0
			3564	2226	609	697	32			

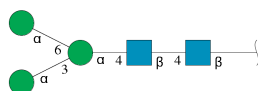
- Molecule 3 is a protein called MONOCLONAL ANTIBODY 10E5 HEAVY CHAIN.

Mol	Chain	Residues	Atoms					ZeroOcc	AltConf	Trace
3	H	219	Total	C	N	O	S	0	2	0
			1672	1060	269	337	6			

- Molecule 4 is a protein called MONOCLONAL ANTIBODY 10E5 LIGHT CHAIN.

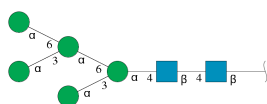
Mol	Chain	Residues	Atoms					ZeroOcc	AltConf	Trace
4	L	214	Total	C	N	O	S	0	1	0
			1642	1022	269	342	9			

- Molecule 5 is an oligosaccharide called alpha-D-mannopyranose-(1-3)-[alpha-D-mannopyranose-(1-6)]alpha-D-mannopyranose-(1-4)-2-acetamido-2-deoxy-beta-D-glucopyranose-(1-4)-2-acetamido-2-deoxy-beta-D-glucopyranose.



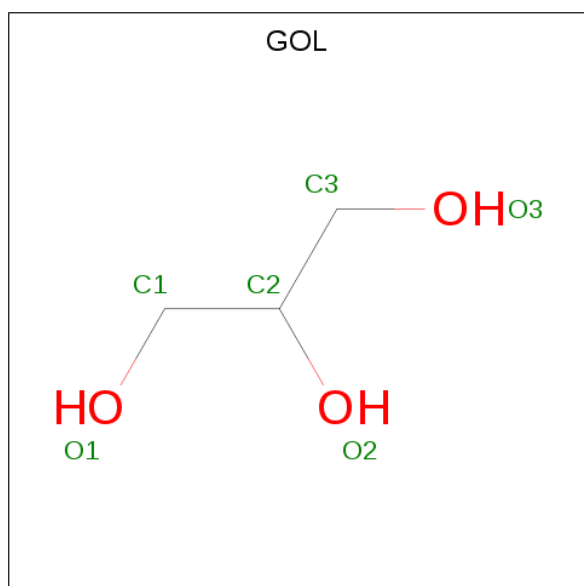
Mol	Chain	Residues	Atoms				ZeroOcc	AltConf	Trace
5	C	5	Total	C	N	O	0	0	0
			61	34	2	25			

- Molecule 6 is an oligosaccharide called alpha-D-mannopyranose-(1-3)-[alpha-D-mannopyranose-(1-6)]alpha-D-mannopyranose-(1-6)-[alpha-D-mannopyranose-(1-3)]alpha-D-mannopyranose-(1-4)-2-acetamido-2-deoxy-beta-D-glucopyranose-(1-4)-2-acetamido-2-deoxy-beta-D-glucopyranose.



Mol	Chain	Residues	Atoms				ZeroOcc	AltConf	Trace
6	D	7	Total	C	N	O	0	0	0
			83	46	2	35			

- Molecule 7 is GLYCEROL (three-letter code: GOL) (formula: C₃H₈O₃).

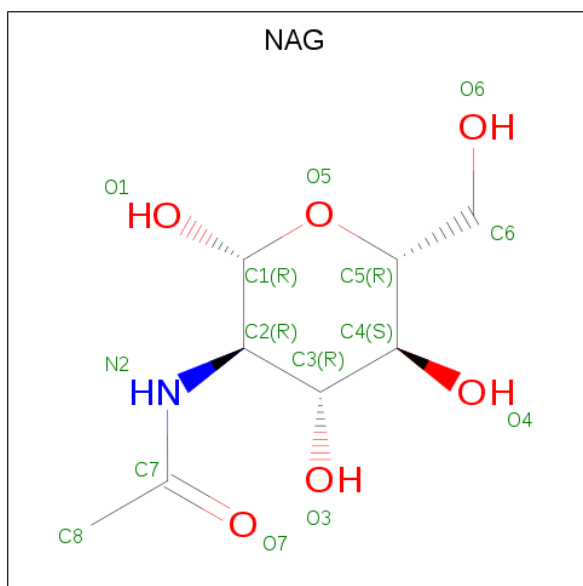


Mol	Chain	Residues	Atoms			ZeroOcc	AltConf
7	A	1	Total	C	O	0	0
			6	3	3		
7	B	1	Total	C	O	0	0
			6	3	3		

- Molecule 8 is CALCIUM ION (three-letter code: CA) (formula: Ca).

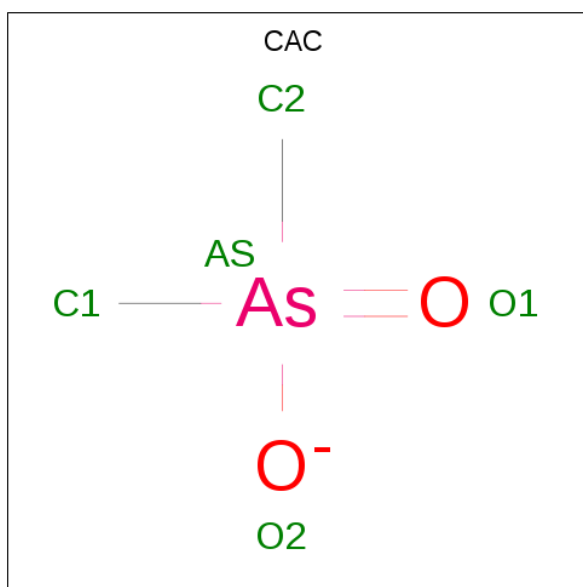
Mol	Chain	Residues	Atoms		ZeroOcc	AltConf
8	B	2	Total	Ca	0	0
			2	2		
8	A	4	Total	Ca	0	0
			4	4		

- Molecule 9 is 2-acetamido-2-deoxy-beta-D-glucopyranose (three-letter code: NAG) (formula: C₈H₁₅NO₆).



Mol	Chain	Residues	Atoms				ZeroOcc	AltConf
9	A	1	Total	C	N	O	0	0
			14	8	1	5		
9	A	1	Total	C	N	O	0	0
			14	8	1	5		
9	B	1	Total	C	N	O	0	0
			14	8	1	5		

- Molecule 10 is CACODYLATE ION (three-letter code: CAC) (formula: C₂H₆AsO₂).



Mol	Chain	Residues	Atoms				ZeroOcc	AltConf
10	B	1	Total	As	C	O	0	0
			5	1	2	2		

- Molecule 11 is MAGNESIUM ION (three-letter code: MG) (formula: Mg).

Mol	Chain	Residues	Atoms		ZeroOcc	AltConf
11	B	1	Total	Mg	0	0
			1	1		

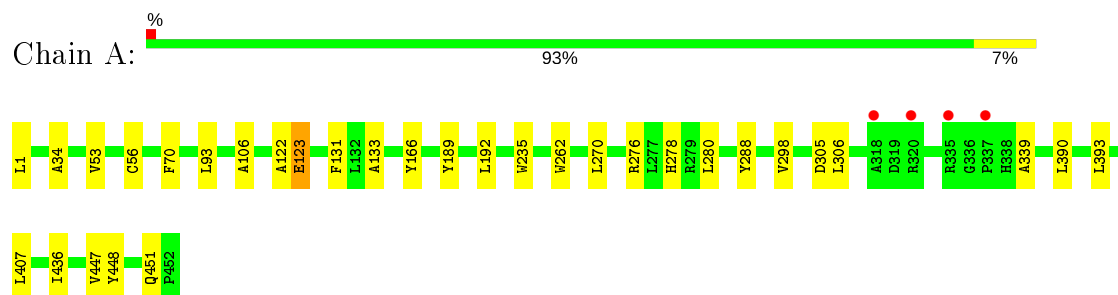
- Molecule 12 is water.

Mol	Chain	Residues	Atoms		ZeroOcc	AltConf
12	A	223	Total	O	0	0
			223	223		
12	B	136	Total	O	0	0
			136	136		
12	H	114	Total	O	0	0
			114	114		
12	L	139	Total	O	0	0
			139	139		

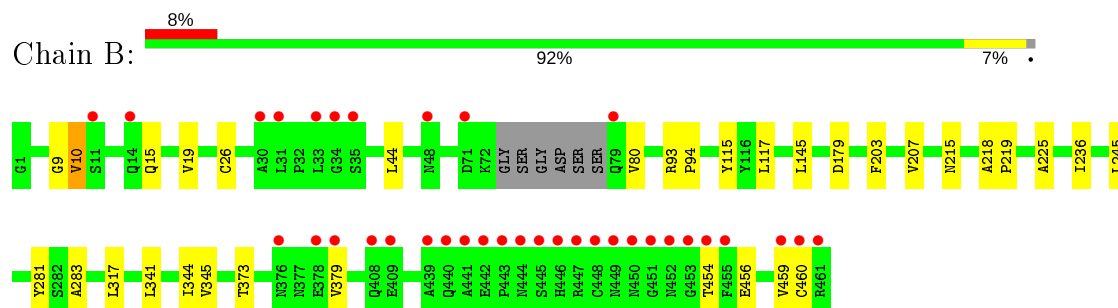
3 Residue-property plots [i](#)

These plots are drawn for all protein, RNA, DNA and oligosaccharide chains in the entry. The first graphic for a chain summarises the proportions of the various outlier classes displayed in the second graphic. The second graphic shows the sequence view annotated by issues in geometry and electron density. Residues are color-coded according to the number of geometric quality criteria for which they contain at least one outlier: green = 0, yellow = 1, orange = 2 and red = 3 or more. A red dot above a residue indicates a poor fit to the electron density ($RSRZ > 2$). Stretches of 2 or more consecutive residues without any outlier are shown as a green connector. Residues present in the sample, but not in the model, are shown in grey.

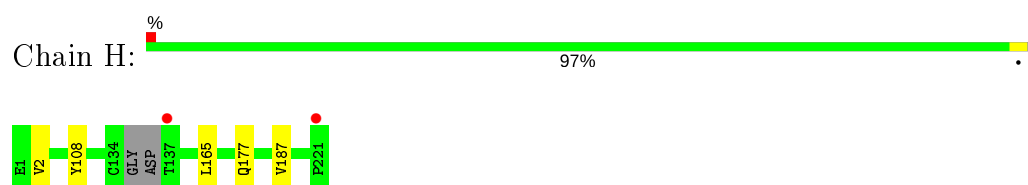
- Molecule 1: INTEGRIN ALPHA-IIB



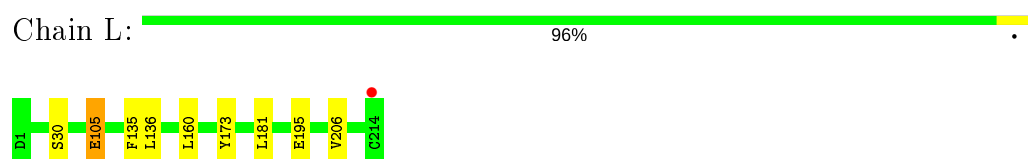
- Molecule 2: INTEGRIN BETA-3



- Molecule 3: MONOCLONAL ANTIBODY 10E5 HEAVY CHAIN



- Molecule 4: MONOCLONAL ANTIBODY 10E5 LIGHT CHAIN



- Molecule 5: alpha-D-mannopyranose-(1-3)-[alpha-D-mannopyranose-(1-6)]alpha-D-mannopyranose-(1-4)-2-acetamido-2-deoxy-beta-D-glucopyranose-(1-4)-2-acetamido-2-deoxy-beta-D-glucopyranose

Chain C:  60% 40%



- Molecule 6: alpha-D-mannopyranose-(1-3)-[alpha-D-mannopyranose-(1-6)]alpha-D-mannopyranose-(1-6)-[alpha-D-mannopyranose-(1-3)]alpha-D-mannopyranose-(1-4)-2-acetamido-2-deoxy-beta-D-glucopyranose-(1-4)-2-acetamido-2-deoxy-beta-D-glucopyranose

Chain D:  57% 43%



4 Data and refinement statistics

Property	Value	Source
Space group	P 32 2 1	Depositor
Cell constants a, b, c, α , β , γ	148.87Å 148.87Å 176.14Å 90.00° 90.00° 120.00°	Depositor
Resolution (Å)	42.64 – 2.80 38.62 – 2.80	Depositor EDS
% Data completeness (in resolution range)	95.5 (42.64-2.80) 90.4 (38.62-2.80)	Depositor EDS
R_{merge}	0.13	Depositor
R_{sym}	(Not available)	Depositor
$\langle I/\sigma(I) \rangle$ ¹	3.91 (at 2.81Å)	Xtriage
Refinement program	REFMAC 5.3.0037	Depositor
R, R_{free}	0.161 , 0.205 0.167 , 0.206	Depositor DCC
R_{free} test set	2581 reflections (5.11%)	wwPDB-VP
Wilson B-factor (Å ²)	39.8	Xtriage
Anisotropy	0.002	Xtriage
Bulk solvent k_{sol} (e/Å ³), B_{sol} (Å ²)	0.29 , 34.3	EDS
L-test for twinning ²	$\langle L \rangle = 0.49$, $\langle L^2 \rangle = 0.32$	Xtriage
Estimated twinning fraction	0.023 for -h,-k,l	Xtriage
F_o, F_c correlation	0.92	EDS
Total number of atoms	11225	wwPDB-VP
Average B, all atoms (Å ²)	20.0	wwPDB-VP

Xtriage's analysis on translational NCS is as follows: *The largest off-origin peak in the Patterson function is 3.23% of the height of the origin peak. No significant pseudotranslation is detected.*

¹Intensities estimated from amplitudes.

²Theoretical values of $\langle |L| \rangle$, $\langle L^2 \rangle$ for acentric reflections are 0.5, 0.333 respectively for untwinned datasets, and 0.375, 0.2 for perfectly twinned datasets.

5 Model quality [i](#)

5.1 Standard geometry [i](#)

Bond lengths and bond angles in the following residue types are not validated in this section: GOL, MG, NAG, CA, CAC, MAN

The Z score for a bond length (or angle) is the number of standard deviations the observed value is removed from the expected value. A bond length (or angle) with $|Z| > 5$ is considered an outlier worth inspection. RMSZ is the root-mean-square of all Z scores of the bond lengths (or angles).

Mol	Chain	Bond lengths		Bond angles	
		RMSZ	# Z >5	RMSZ	# Z >5
1	A	0.31	0/3637	0.51	0/4954
2	B	0.30	0/3642	0.47	0/4936
3	H	0.30	0/1721	0.48	0/2357
4	L	0.32	0/1681	0.49	0/2280
All	All	0.31	0/10681	0.49	0/14527

There are no bond length outliers.

There are no bond angle outliers.

There are no chirality outliers.

There are no planarity outliers.

5.2 Too-close contacts [i](#)

In the following table, the Non-H and H(model) columns list the number of non-hydrogen atoms and hydrogen atoms in the chain respectively. The H(added) column lists the number of hydrogen atoms added and optimized by MolProbity. The Clashes column lists the number of clashes within the asymmetric unit, whereas Symm-Clashes lists symmetry related clashes.

Mol	Chain	Non-H	H(model)	H(added)	Clashes	Symm-Clashes
1	A	3525	0	3372	20	0
2	B	3564	0	3499	15	0
3	H	1672	0	1629	4	0
4	L	1642	0	1559	6	0
5	C	61	0	52	0	0
6	D	83	0	70	0	0
7	A	6	0	8	0	0
7	B	6	0	7	0	0
8	A	4	0	0	0	0

Continued on next page...

Continued from previous page...

Mol	Chain	Non-H	H(model)	H(added)	Clashes	Symm-Clashes
8	B	2	0	0	0	0
9	A	28	0	26	0	0
9	B	14	0	13	0	0
10	B	5	0	0	0	0
11	B	1	0	0	0	0
12	A	223	0	0	1	0
12	B	136	0	0	0	0
12	H	114	0	0	0	0
12	L	139	0	0	0	0
All	All	11225	0	10235	43	0

The all-atom clashscore is defined as the number of clashes found per 1000 atoms (including hydrogen atoms). The all-atom clashscore for this structure is 2.

All (43) close contacts within the same asymmetric unit are listed below, sorted by their clash magnitude.

Atom-1	Atom-2	Interatomic distance (Å)	Clash overlap (Å)
1:A:1:LEU:HB2	1:A:393:LEU:HD11	1.77	0.65
1:A:270:LEU:HD23	1:A:276:ARG:HA	1.82	0.60
1:A:280:LEU:HD11	1:A:306:LEU:HD23	1.83	0.60
4:L:195:GLU:HG2	4:L:206:VAL:HG22	1.88	0.54
2:B:456:GLU:O	2:B:459:VAL:HG12	2.09	0.52
1:A:436:ILE:HG22	1:A:447:VAL:HG22	1.92	0.51
2:B:145:LEU:HD22	2:B:345:VAL:HG22	1.92	0.51
2:B:281:TYR:CE1	2:B:283:ALA:HB3	2.46	0.51
1:A:407:LEU:HD22	1:A:448:TYR:CE2	2.45	0.50
4:L:136:LEU:HD12	4:L:136:LEU:N	2.26	0.50
3:H:177:GLN:HB3	4:L:160:LEU:HD11	1.92	0.50
1:A:278[A]:HIS:CD2	1:A:339:ALA:HB1	2.47	0.50
3:H:165:LEU:CD2	3:H:187:VAL:HG21	2.42	0.49
1:A:122:ALA:O	1:A:123:GLU:HB2	2.13	0.48
1:A:280:LEU:CD1	1:A:306:LEU:HD23	2.43	0.48
2:B:26:CYS:HB2	2:B:44:LEU:HD22	1.96	0.48
1:A:390:LEU:HD12	1:A:390:LEU:N	2.30	0.47
2:B:117:LEU:HD22	2:B:225:ALA:HB1	1.96	0.47
2:B:218:ALA:HB3	2:B:219:PRO:HD3	1.97	0.46
2:B:115:TYR:CZ	2:B:236:ILE:HD12	2.51	0.46
1:A:34:ALA:HB1	1:A:56:CYS:O	2.16	0.45
1:A:93:LEU:HD13	1:A:131:PHE:CD1	2.50	0.45
1:A:70:PHE:CE1	1:A:133:ALA:HB2	2.52	0.45
3:H:165:LEU:HD23	3:H:187:VAL:HG21	1.99	0.45

Continued on next page...

Continued from previous page...

Atom-1	Atom-2	Interatomic distance (Å)	Clash overlap (Å)
1:A:235:TRP:CZ2	1:A:270:LEU:HD11	2.53	0.44
4:L:105:GLU:HG3	4:L:173:TYR:OH	2.18	0.44
1:A:235:TRP:HZ2	1:A:270:LEU:HD11	1.83	0.44
2:B:203:PHE:O	2:B:207:VAL:HG23	2.18	0.43
2:B:245:LEU:HD13	2:B:344:ILE:HG23	2.01	0.43
1:A:298:VAL:HG22	1:A:305:ASP:OD2	2.20	0.42
1:A:451:GLN:NE2	12:A:4222:HOH:O	2.52	0.42
2:B:459:VAL:HG22	2:B:460:CYS:O	2.20	0.42
1:A:122:ALA:O	1:A:123:GLU:CB	2.68	0.41
4:L:135:PHE:C	4:L:136:LEU:HD12	2.41	0.41
1:A:262:TRP:HB3	2:B:317:LEU:HD13	2.02	0.41
1:A:189:TYR:O	1:A:192:LEU:HD13	2.21	0.41
2:B:93:ARG:HB2	2:B:94:PRO:HD2	2.02	0.41
2:B:10:VAL:HG23	2:B:10:VAL:O	2.21	0.41
2:B:15:GLN:O	2:B:19:VAL:HG23	2.21	0.41
2:B:373:THR:OG1	2:B:379:VAL:HG22	2.21	0.41
1:A:53:VAL:HG21	1:A:106:ALA:CB	2.51	0.41
4:L:181:LEU:N	4:L:181:LEU:HD23	2.36	0.40
3:H:2:VAL:HG11	3:H:108:TYR:CD2	2.56	0.40

There are no symmetry-related clashes.

5.3 Torsion angles ⓘ

5.3.1 Protein backbone ⓘ

In the following table, the Percentiles column shows the percent Ramachandran outliers of the chain as a percentile score with respect to all X-ray entries followed by that with respect to entries of similar resolution.

The Analysed column shows the number of residues for which the backbone conformation was analysed, and the total number of residues.

Mol	Chain	Analysed	Favoured	Allowed	Outliers	Percentiles	
1	A	458/452 (101%)	446 (97%)	11 (2%)	1 (0%)	47	78
2	B	457/461 (99%)	434 (95%)	19 (4%)	4 (1%)	17	46
3	H	217/221 (98%)	212 (98%)	5 (2%)	0	100	100
4	L	213/214 (100%)	207 (97%)	5 (2%)	1 (0%)	29	61
All	All	1345/1348 (100%)	1299 (97%)	40 (3%)	6 (0%)	29	66

All (6) Ramachandran outliers are listed below:

Mol	Chain	Res	Type
1	A	123	GLU
2	B	9	GLY
2	B	454	THR
2	B	80	VAL
4	L	30	SER
2	B	10	VAL

5.3.2 Protein sidechains ⓘ

In the following table, the Percentiles column shows the percent sidechain outliers of the chain as a percentile score with respect to all X-ray entries followed by that with respect to entries of similar resolution.

The Analysed column shows the number of residues for which the sidechain conformation was analysed, and the total number of residues.

Mol	Chain	Analysed	Rotameric	Outliers	Percentiles	
1	A	368/360 (102%)	366 (100%)	2 (0%)	88	96
2	B	411/409 (100%)	408 (99%)	3 (1%)	84	95
3	H	191/190 (100%)	191 (100%)	0	100	100
4	L	189/188 (100%)	188 (100%)	1 (0%)	88	96
All	All	1159/1147 (101%)	1153 (100%)	6 (0%)	88	96

All (6) residues with a non-rotameric sidechain are listed below:

Mol	Chain	Res	Type
1	A	166	TYR
1	A	288	TYR
2	B	179	ASP
2	B	215	ASN
2	B	341	LEU
4	L	105	GLU

Some sidechains can be flipped to improve hydrogen bonding and reduce clashes. All (4) such sidechains are listed below:

Mol	Chain	Res	Type
1	A	451	GLN
2	B	342	GLN
2	B	428	GLN

Continued on next page...

Continued from previous page...

Mol	Chain	Res	Type
3	H	65	GLN

5.3.3 RNA ⓘ

There are no RNA molecules in this entry.

5.4 Non-standard residues in protein, DNA, RNA chains ⓘ

There are no non-standard protein/DNA/RNA residues in this entry.

5.5 Carbohydrates ⓘ

12 monosaccharides are modelled in this entry.

In the following table, the Counts columns list the number of bonds (or angles) for which Mogul statistics could be retrieved, the number of bonds (or angles) that are observed in the model and the number of bonds (or angles) that are defined in the Chemical Component Dictionary. The Link column lists molecule types, if any, to which the group is linked. The Z score for a bond length (or angle) is the number of standard deviations the observed value is removed from the expected value. A bond length (or angle) with $|Z| > 2$ is considered an outlier worth inspection. RMSZ is the root-mean-square of all Z scores of the bond lengths (or angles).

Mol	Type	Chain	Res	Link	Bond lengths			Bond angles		
					Counts	RMSZ	$\# Z > 2$	Counts	RMSZ	$\# Z > 2$
5	NAG	C	1	2,5	14,14,15	0.60	0	17,19,21	0.63	0
5	NAG	C	2	5	14,14,15	0.66	0	17,19,21	0.87	0
5	MAN	C	3	5	11,11,12	0.62	0	15,15,17	0.91	1 (6%)
5	MAN	C	4	5	11,11,12	0.55	0	15,15,17	0.77	0
5	MAN	C	5	5	11,11,12	0.56	0	15,15,17	0.81	1 (6%)
6	NAG	D	1	2,6	14,14,15	0.64	0	17,19,21	0.81	0
6	NAG	D	2	6	14,14,15	0.45	0	17,19,21	0.98	0
6	MAN	D	3	6	11,11,12	0.60	0	15,15,17	0.78	0
6	MAN	D	4	6	11,11,12	0.63	0	15,15,17	1.21	1 (6%)
6	MAN	D	5	6	11,11,12	0.58	0	15,15,17	1.19	3 (20%)
6	MAN	D	6	6	11,11,12	0.61	0	15,15,17	0.87	1 (6%)
6	MAN	D	7	6	11,11,12	0.61	0	15,15,17	0.86	0

In the following table, the Chirals column lists the number of chiral outliers, the number of chiral centers analysed, the number of these observed in the model and the number defined in the Chemical Component Dictionary. Similar counts are reported in the Torsion and Rings columns.

'-' means no outliers of that kind were identified.

Mol	Type	Chain	Res	Link	Chirals	Torsions	Rings
5	NAG	C	1	2,5	-	0/6/23/26	0/1/1/1
5	NAG	C	2	5	-	2/6/23/26	0/1/1/1
5	MAN	C	3	5	1/1/4/5	0/2/19/22	0/1/1/1
5	MAN	C	4	5	-	0/2/19/22	0/1/1/1
5	MAN	C	5	5	-	2/2/19/22	0/1/1/1
6	NAG	D	1	2,6	-	0/6/23/26	0/1/1/1
6	NAG	D	2	6	-	1/6/23/26	0/1/1/1
6	MAN	D	3	6	1/1/4/5	0/2/19/22	0/1/1/1
6	MAN	D	4	6	-	0/2/19/22	0/1/1/1
6	MAN	D	5	6	-	0/2/19/22	0/1/1/1
6	MAN	D	6	6	-	2/2/19/22	0/1/1/1
6	MAN	D	7	6	-	0/2/19/22	0/1/1/1

There are no bond length outliers.

All (7) bond angle outliers are listed below:

Mol	Chain	Res	Type	Atoms	Z	Observed(°)	Ideal(°)
6	D	4	MAN	C1-O5-C5	3.84	117.39	112.19
6	D	5	MAN	C1-C2-C3	2.59	112.84	109.67
6	D	6	MAN	C1-O5-C5	2.55	115.64	112.19
5	C	5	MAN	C1-O5-C5	2.16	115.12	112.19
5	C	3	MAN	C3-C4-C5	2.10	113.99	110.24
6	D	5	MAN	C3-C4-C5	-2.10	106.49	110.24
6	D	5	MAN	C1-O5-C5	2.03	114.94	112.19

All (2) chirality outliers are listed below:

Mol	Chain	Res	Type	Atom
5	C	3	MAN	C1
6	D	3	MAN	C1

All (7) torsion outliers are listed below:

Mol	Chain	Res	Type	Atoms
6	D	6	MAN	O5-C5-C6-O6
5	C	2	NAG	O5-C5-C6-O6
5	C	2	NAG	C4-C5-C6-O6
5	C	5	MAN	O5-C5-C6-O6
6	D	6	MAN	C4-C5-C6-O6
5	C	5	MAN	C4-C5-C6-O6

Continued on next page...

Continued from previous page...

Mol	Chain	Res	Type	Atoms
6	D	2	NAG	O5-C5-C6-O6

There are no ring outliers.

No monomer is involved in short contacts.

5.6 Ligand geometry [i](#)

Of 13 ligands modelled in this entry, 7 are monoatomic - leaving 6 for Mogul analysis.

In the following table, the Counts columns list the number of bonds (or angles) for which Mogul statistics could be retrieved, the number of bonds (or angles) that are observed in the model and the number of bonds (or angles) that are defined in the Chemical Component Dictionary. The Link column lists molecule types, if any, to which the group is linked. The Z score for a bond length (or angle) is the number of standard deviations the observed value is removed from the expected value. A bond length (or angle) with $|Z| > 2$ is considered an outlier worth inspection. RMSZ is the root-mean-square of all Z scores of the bond lengths (or angles).

Mol	Type	Chain	Res	Link	Bond lengths			Bond angles		
					Counts	RMSZ	$\# Z > 2$	Counts	RMSZ	$\# Z > 2$
7	GOL	A	1453	-	5,5,5	0.44	0	5,5,5	0.08	0
7	GOL	B	1463	8	5,5,5	0.37	0	5,5,5	0.20	0
9	NAG	A	3249	1	14,14,15	0.60	0	17,19,21	0.92	1 (5%)
10	CAC	B	1462	11	0,4,4	0.00	-	0,6,6	0.00	-
9	NAG	A	3015	1	14,14,15	0.59	0	17,19,21	1.09	2 (11%)
9	NAG	B	3099	2	14,14,15	0.54	0	17,19,21	0.83	0

In the following table, the Chirals column lists the number of chiral outliers, the number of chiral centers analysed, the number of these observed in the model and the number defined in the Chemical Component Dictionary. Similar counts are reported in the Torsion and Rings columns. '-' means no outliers of that kind were identified.

Mol	Type	Chain	Res	Link	Chirals	Torsions	Rings
9	NAG	B	3099	2	-	2/6/23/26	0/1/1/1
7	GOL	A	1453	-	-	2/4/4/4	-
7	GOL	B	1463	8	-	0/4/4/4	-
9	NAG	A	3015	1	-	0/6/23/26	0/1/1/1
9	NAG	A	3249	1	-	0/6/23/26	0/1/1/1

There are no bond length outliers.

All (3) bond angle outliers are listed below:

Mol	Chain	Res	Type	Atoms	Z	Observed(°)	Ideal(°)
9	A	3015	NAG	C4-C3-C2	2.87	115.22	111.02
9	A	3015	NAG	C3-C4-C5	2.40	114.52	110.24
9	A	3249	NAG	O5-C5-C6	2.24	110.72	107.20

There are no chirality outliers.

All (4) torsion outliers are listed below:

Mol	Chain	Res	Type	Atoms
9	B	3099	NAG	O5-C5-C6-O6
9	B	3099	NAG	C4-C5-C6-O6
7	A	1453	GOL	O1-C1-C2-C3
7	A	1453	GOL	O1-C1-C2-O2

There are no ring outliers.

No monomer is involved in short contacts.

5.7 Other polymers [i](#)

There are no such residues in this entry.

5.8 Polymer linkage issues [i](#)

There are no chain breaks in this entry.

6 Fit of model and data ⓘ

6.1 Protein, DNA and RNA chains ⓘ

In the following table, the column labelled ‘#RSRZ> 2’ contains the number (and percentage) of RSRZ outliers, followed by percent RSRZ outliers for the chain as percentile scores relative to all X-ray entries and entries of similar resolution. The OWAB column contains the minimum, median, 95th percentile and maximum values of the occupancy-weighted average B-factor per residue. The column labelled ‘Q< 0.9’ lists the number of (and percentage) of residues with an average occupancy less than 0.9.

Mol	Chain	Analysed	<RSRZ>	#RSRZ>2	OWAB(Å ²)	Q<0.9
1	A	452/452 (100%)	-0.12	4 (0%) 84 80	2, 15, 32, 44	2 (0%)
2	B	455/461 (98%)	0.30	35 (7%) 13 7	3, 24, 64, 76	1 (0%)
3	H	219/221 (99%)	-0.20	2 (0%) 84 80	2, 12, 39, 70	0
4	L	214/214 (100%)	-0.32	1 (0%) 91 88	2, 10, 23, 44	1 (0%)
All	All	1340/1348 (99%)	-0.02	42 (3%) 49 39	2, 15, 58, 76	4 (0%)

All (42) RSRZ outliers are listed below:

Mol	Chain	Res	Type	RSRZ
2	B	448	CYS	7.1
2	B	34	GLY	6.3
2	B	452	ASN	6.2
2	B	454	THR	6.0
1	A	337[A]	PRO	5.5
2	B	451	GLY	5.3
3	H	137	THR	5.3
2	B	443	PRO	5.0
2	B	439	ALA	5.0
2	B	449	ASN	4.9
2	B	444	ASN	4.9
2	B	446	HIS	4.6
2	B	35	SER	4.4
4	L	214	CYS	4.3
2	B	33	LEU	4.3
2	B	450	ASN	4.3
2	B	459	VAL	3.8
2	B	453	GLY	3.6
1	A	320	ARG	3.3
2	B	461	ARG	3.3
2	B	455	PHE	3.2

Continued on next page...

Continued from previous page...

Mol	Chain	Res	Type	RSRZ
2	B	460	CYS	3.1
2	B	441	ALA	3.1
2	B	379	VAL	3.0
2	B	31	LEU	3.0
1	A	335[A]	ARG	3.0
3	H	221	PRO	2.9
2	B	48	ASN	2.9
2	B	442	GLU	2.9
2	B	408	GLN	2.8
2	B	79	GLN	2.8
2	B	378	GLU	2.6
2	B	71	ASP	2.6
2	B	445	SER	2.6
2	B	447	ARG	2.5
2	B	409	GLU	2.4
2	B	11	SER	2.2
1	A	318	ALA	2.2
2	B	14	GLN	2.2
2	B	376	ASN	2.1
2	B	30	ALA	2.0
2	B	440	GLN	2.0

6.2 Non-standard residues in protein, DNA, RNA chains [i](#)

There are no non-standard protein/DNA/RNA residues in this entry.

6.3 Carbohydrates [i](#)

In the following table, the Atoms column lists the number of modelled atoms in the group and the number defined in the chemical component dictionary. The B-factors column lists the minimum, median, 95th percentile and maximum values of B factors of atoms in the group. The column labelled 'Q< 0.9' lists the number of atoms with occupancy less than 0.9.

Mol	Type	Chain	Res	Atoms	RSCC	RSR	B-factors(\AA^2)	Q<0.9
5	MAN	C	5	11/12	0.78	0.38	73,75,75,75	0
5	MAN	C	3	11/12	0.80	0.42	63,66,71,74	0
5	MAN	C	4	11/12	0.83	0.35	61,64,65,66	0
6	MAN	D	3	11/12	0.88	0.28	47,53,55,55	0
6	MAN	D	7	11/12	0.90	0.31	50,52,53,53	11
5	NAG	C	2	14/15	0.91	0.33	41,44,50,58	0
6	MAN	D	6	11/12	0.91	0.35	53,54,55,56	0

Continued on next page...

Continued from previous page...

Mol	Type	Chain	Res	Atoms	RSCC	RSR	B-factors(\AA^2)	Q<0.9
6	NAG	D	2	14/15	0.91	0.29	35,47,52,54	0
6	MAN	D	5	11/12	0.92	0.19	30,34,37,37	0
6	NAG	D	1	14/15	0.93	0.26	37,42,44,45	0
6	MAN	D	4	11/12	0.95	0.26	38,43,46,50	0
5	NAG	C	1	14/15	0.97	0.15	21,25,30,36	0

6.4 Ligands [i](#)

In the following table, the Atoms column lists the number of modelled atoms in the group and the number defined in the chemical component dictionary. The B-factors column lists the minimum, median, 95th percentile and maximum values of B factors of atoms in the group. The column labelled 'Q< 0.9' lists the number of atoms with occupancy less than 0.9.

Mol	Type	Chain	Res	Atoms	RSCC	RSR	B-factors(\AA^2)	Q<0.9
9	NAG	A	3015	14/15	0.68	0.50	64,68,70,70	0
9	NAG	B	3099	14/15	0.71	0.41	66,71,74,75	0
9	NAG	A	3249	14/15	0.72	0.50	52,55,56,57	14
7	GOL	A	1453	6/6	0.93	0.17	32,35,37,39	0
7	GOL	B	1463	6/6	0.94	0.21	36,38,39,39	0
8	CA	A	2004	1/1	0.95	0.13	30,30,30,30	0
8	CA	A	2006	1/1	0.95	0.04	28,28,28,28	0
11	MG	B	2001	1/1	0.95	0.05	3,3,3,3	0
8	CA	A	2005	1/1	0.96	0.10	26,26,26,26	0
8	CA	A	2007	1/1	0.97	0.09	32,32,32,32	0
8	CA	B	2003	1/1	0.98	0.04	4,4,4,4	0
8	CA	B	2002	1/1	0.99	0.05	6,6,6,6	0
10	CAC	B	1462	5/5	0.99	0.07	2,3,8,8	0

6.5 Other polymers [i](#)

There are no such residues in this entry.