



# Full wwPDB X-ray Structure Validation Report ⓘ

May 16, 2020 – 09:58 am BST

PDB ID : 1VE7  
Title : Crystal structure of an acylpeptide hydrolase/esterase from *Aeropyrum pernix* K1 in complex with p-nitrophenyl phosphate  
Authors : Bartlam, M.; Wang, G.; Gao, R.; Yang, H.; Zhao, X.; Xie, G.; Cao, S.; Feng, Y.; Rao, Z.  
Deposited on : 2004-03-27  
Resolution : 2.70 Å(reported)

This is a Full wwPDB X-ray Structure Validation Report for a publicly released PDB entry.

We welcome your comments at [validation@mail.wwpdb.org](mailto:validation@mail.wwpdb.org)

A user guide is available at

<https://www.wwpdb.org/validation/2017/XrayValidationReportHelp>

with specific help available everywhere you see the ⓘ symbol.

---

The following versions of software and data (see [references ⓘ](#)) were used in the production of this report:

MolProbity	:	4.02b-467
Mogul	:	1.8.5 (274361), CSD as541be (2020)
Xtriage (Phenix)	:	1.13
EDS	:	2.11
Percentile statistics	:	20191225.v01 (using entries in the PDB archive December 25th 2019)
Refmac	:	5.8.0158
CCP4	:	7.0.044 (Gargrove)
Ideal geometry (proteins)	:	Engh & Huber (2001)
Ideal geometry (DNA, RNA)	:	Parkinson et al. (1996)
Validation Pipeline (wwPDB-VP)	:	2.11

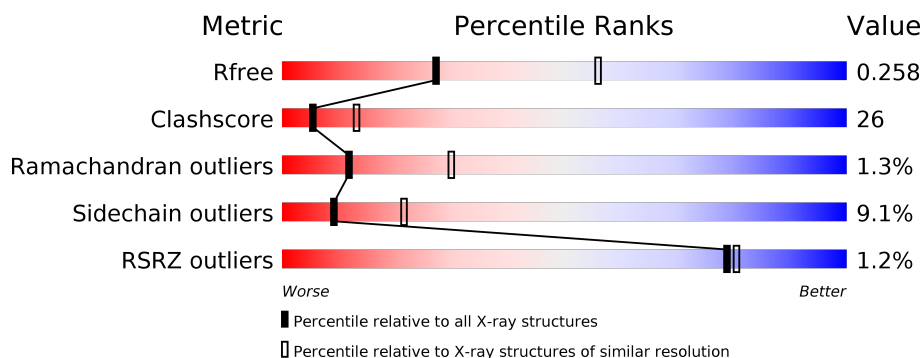
# 1 Overall quality at a glance

The following experimental techniques were used to determine the structure:

## *X-RAY DIFFRACTION*

The reported resolution of this entry is 2.70 Å.

Percentile scores (ranging between 0-100) for global validation metrics of the entry are shown in the following graphic. The table shows the number of entries on which the scores are based.



Metric	Whole archive (#Entries)	Similar resolution (#Entries, resolution range(Å))
$R_{free}$	130704	2808 (2.70-2.70)
Clashscore	141614	3122 (2.70-2.70)
Ramachandran outliers	138981	3069 (2.70-2.70)
Sidechain outliers	138945	3069 (2.70-2.70)
RSRZ outliers	127900	2737 (2.70-2.70)

The table below summarises the geometric issues observed across the polymeric chains and their fit to the electron density. The red, orange, yellow and green segments on the lower bar indicate the fraction of residues that contain outliers for  $\geq 3$ , 2, 1 and 0 types of geometric quality criteria respectively. A grey segment represents the fraction of residues that are not modelled. The numeric value for each fraction is indicated below the corresponding segment, with a dot representing fractions  $\leq 5\%$ . The upper red bar (where present) indicates the fraction of residues that have poor fit to the electron density. The numeric value is given above the bar.

Mol	Chain	Length	Quality of chain
1	A	582	
1	B	582	

The following table lists non-polymeric compounds, carbohydrate monomers and non-standard residues in protein, DNA, RNA chains that are outliers for geometric or electron-density-fit criteria:

Mol	Type	Chain	Res	Chirality	Geometry	Clashes	Electron density
3	GOL	A	751	-	X	-	-

## 2 Entry composition [i](#)

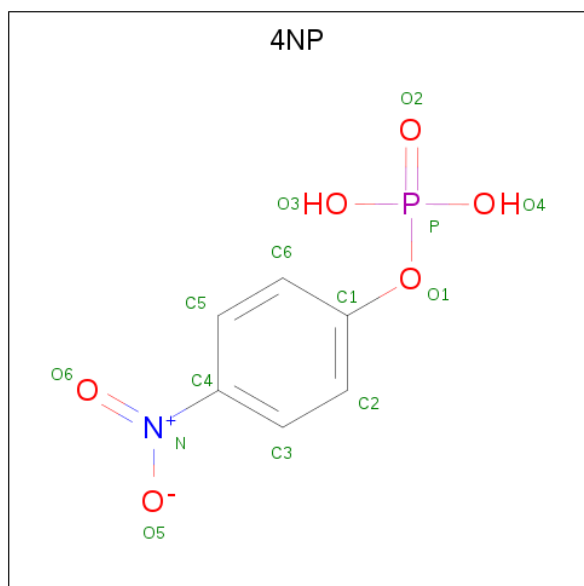
There are 4 unique types of molecules in this entry. The entry contains 8951 atoms, of which 0 are hydrogens and 0 are deuteriums.

In the tables below, the ZeroOcc column contains the number of atoms modelled with zero occupancy, the AltConf column contains the number of residues with at least one atom in alternate conformation and the Trace column contains the number of residues modelled with at most 2 atoms.

- Molecule 1 is a protein called Acylamino-acid-releasing enzyme.

Mol	Chain	Residues	Atoms					ZeroOcc	AltConf	Trace
1	A	573	Total	C	N	O	S	0	0	0
			4365	2755	772	826	12			
1	B	573	Total	C	N	O	S	0	0	0
			4365	2755	772	826	12			

- Molecule 2 is 4-NITROPHENYL PHOSPHATE (three-letter code: 4NP) (formula:  $C_6H_5NO_6P$ ).



Mol	Chain	Residues	Atoms					ZeroOcc	AltConf
2	A	1	Total	C	N	O	P	0	0
			14	6	1	6	1		
2	B	1	Total	C	N	O	P	0	0
			14	6	1	6	1		

- Molecule 3 is GLYCEROL (three-letter code: GOL) (formula:  $C_3H_8O_3$ ).



Mol	Chain	Residues	Atoms			ZeroOcc	AltConf
3	A	1	Total	C	O	0	0
			6	3	3		

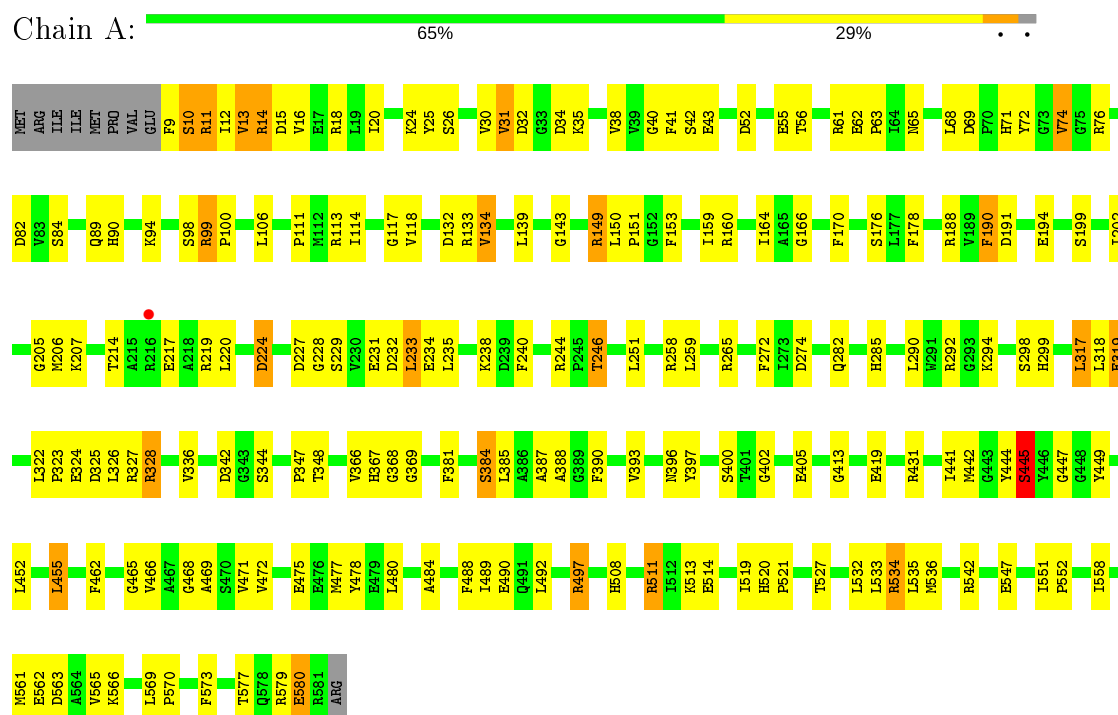
- Molecule 4 is water.

Mol	Chain	Residues	Atoms		ZeroOcc	AltConf
4	A	107	Total	O	0	0
			107	107		
4	B	80	Total	O	0	0
			80	80		

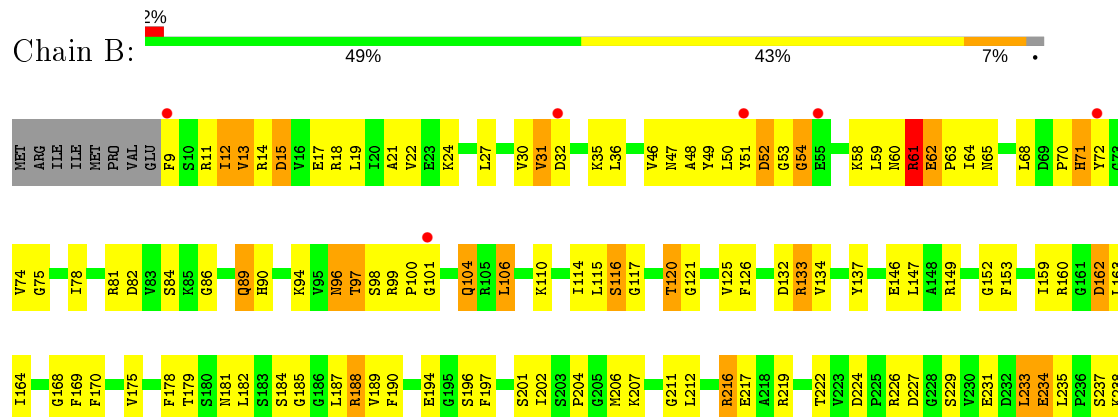
### 3 Residue-property plots

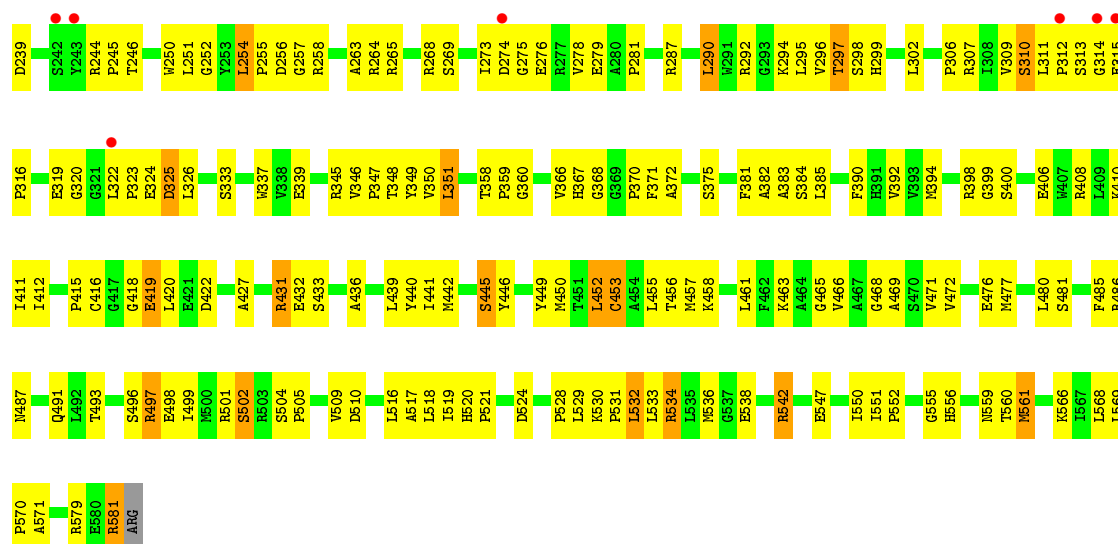
These plots are drawn for all protein, RNA and DNA chains in the entry. The first graphic for a chain summarises the proportions of the various outlier classes displayed in the second graphic. The second graphic shows the sequence view annotated by issues in geometry and electron density. Residues are color-coded according to the number of geometric quality criteria for which they contain at least one outlier: green = 0, yellow = 1, orange = 2 and red = 3 or more. A red dot above a residue indicates a poor fit to the electron density ( $RSRZ > 2$ ). Stretches of 2 or more consecutive residues without any outlier are shown as a green connector. Residues present in the sample, but not in the model, are shown in grey.

#### • Molecule 1: Acylamino-acid-releasing enzyme



#### • Molecule 1: Acylamino-acid-releasing enzyme





## 4 Data and refinement statistics

Property	Value	Source
Space group	P 21 21 21	Depositor
Cell constants a, b, c, $\alpha$ , $\beta$ , $\gamma$	63.88Å 104.62Å 168.00Å 90.00° 90.00° 90.00°	Depositor
Resolution (Å)	30.00 – 2.70 40.47 – 2.60	Depositor EDS
% Data completeness (in resolution range)	(Not available) (30.00-2.70) 100.0 (40.47-2.60)	Depositor EDS
$R_{merge}$	0.10	Depositor
$R_{sym}$	0.10	Depositor
$\langle I/\sigma(I) \rangle$ <sup>1</sup>	2.80 (at 2.61Å)	Xtriage
Refinement program	CNS	Depositor
R, $R_{free}$	0.207 , 0.267 0.198 , 0.258	Depositor DCC
$R_{free}$ test set	1555 reflections (4.39%)	wwPDB-VP
Wilson B-factor (Å <sup>2</sup> )	42.9	Xtriage
Anisotropy	0.061	Xtriage
Bulk solvent $k_{sol}$ (e/Å <sup>3</sup> ), $B_{sol}$ (Å <sup>2</sup> )	0.34 , 54.2	EDS
L-test for twinning <sup>2</sup>	$\langle  L  \rangle = 0.43$ , $\langle L^2 \rangle = 0.25$	Xtriage
Estimated twinning fraction	No twinning to report.	Xtriage
$F_o, F_c$ correlation	0.92	EDS
Total number of atoms	8951	wwPDB-VP
Average B, all atoms (Å <sup>2</sup> )	37.0	wwPDB-VP

Xtriage's analysis on translational NCS is as follows: *The largest off-origin peak in the Patterson function is 2.90% of the height of the origin peak. No significant pseudotranslation is detected.*

<sup>1</sup>Intensities estimated from amplitudes.

<sup>2</sup>Theoretical values of  $\langle |L| \rangle$ ,  $\langle L^2 \rangle$  for acentric reflections are 0.5, 0.333 respectively for untwinned datasets, and 0.375, 0.2 for perfectly twinned datasets.



## 5 Model quality [i](#)

### 5.1 Standard geometry [i](#)

Bond lengths and bond angles in the following residue types are not validated in this section: GOL, 4NP

The Z score for a bond length (or angle) is the number of standard deviations the observed value is removed from the expected value. A bond length (or angle) with  $|Z| > 5$  is considered an outlier worth inspection. RMSZ is the root-mean-square of all Z scores of the bond lengths (or angles).

Mol	Chain	Bond lengths		Bond angles	
		RMSZ	# Z  >5	RMSZ	# Z  >5
1	A	0.54	0/4457	0.78	1/6041 (0.0%)
1	B	0.48	0/4457	0.75	2/6041 (0.0%)
All	All	0.51	0/8914	0.76	3/12082 (0.0%)

There are no bond length outliers.

All (3) bond angle outliers are listed below:

Mol	Chain	Res	Type	Atoms	Z	Observed(°)	Ideal(°)
1	A	134	VAL	N-CA-C	-5.96	94.91	111.00
1	B	134	VAL	N-CA-C	-5.55	96.02	111.00
1	B	89	GLN	N-CA-C	-5.18	97.00	111.00

There are no chirality outliers.

There are no planarity outliers.

### 5.2 Too-close contacts [i](#)

In the following table, the Non-H and H(model) columns list the number of non-hydrogen atoms and hydrogen atoms in the chain respectively. The H(added) column lists the number of hydrogen atoms added and optimized by MolProbity. The Clashes column lists the number of clashes within the asymmetric unit, whereas Symm-Clashes lists symmetry related clashes.

Mol	Chain	Non-H	H(model)	H(added)	Clashes	Symm-Clashes
1	A	4365	0	4338	187	0
1	B	4365	0	4338	273	0
2	A	14	0	4	4	0
2	B	14	0	4	0	0
3	A	6	0	5	2	0
4	A	107	0	0	12	0

*Continued on next page...*

*Continued from previous page...*

Mol	Chain	Non-H	H(model)	H(added)	Clashes	Symm-Clashes
4	B	80	0	0	10	0
All	All	8951	0	8689	456	0

The all-atom clashscore is defined as the number of clashes found per 1000 atoms (including hydrogen atoms). The all-atom clashscore for this structure is 26.

All (456) close contacts within the same asymmetric unit are listed below, sorted by their clash magnitude.

Atom-1	Atom-2	Interatomic distance (Å)	Clash overlap (Å)
1:A:11:ARG:HB2	1:A:14:ARG:HH21	1.13	1.06
1:B:50:LEU:HG	1:B:59:LEU:HD21	1.38	1.04
1:A:159:ILE:HD12	1:A:164:ILE:HG12	1.39	1.02
1:B:32:ASP:HB2	1:B:97:THR:HG21	1.40	1.01
1:B:472:VAL:HG21	1:B:532:LEU:HD13	1.44	0.97
1:B:254:LEU:HD12	1:B:258:ARG:HB2	1.47	0.96
1:B:50:LEU:HD11	1:B:97:THR:HG22	1.48	0.94
1:B:273:ILE:HD11	1:B:295:LEU:HD11	1.52	0.91
1:A:573:PHE:HD2	3:A:751:GOL:O1	1.53	0.91
1:A:327:ARG:HD2	4:A:838:HOH:O	1.71	0.91
1:B:74:VAL:HG11	1:B:120:THR:O	1.73	0.89
1:A:11:ARG:HB2	1:A:14:ARG:NH2	1.90	0.87
1:A:11:ARG:HA	1:A:14:ARG:HE	1.38	0.86
1:B:68:LEU:HD12	1:B:78:ILE:HG21	1.58	0.85
1:A:442:MET:HG3	1:A:466:VAL:HB	1.60	0.84
1:B:244:ARG:HB2	1:B:265:ARG:HH12	1.43	0.83
1:B:533:LEU:HA	1:B:536:MET:HE3	1.62	0.82
1:B:452:LEU:O	1:B:456:THR:HG23	1.80	0.82
1:B:337:TRP:CZ3	1:B:347:PRO:HG3	2.15	0.82
1:A:431:ARG:HH11	1:A:431:ARG:HG2	1.45	0.82
1:B:497:ARG:HH11	1:B:497:ARG:HG3	1.44	0.82
1:A:246:THR:HG21	1:A:402:GLY:O	1.80	0.81
1:A:10:SER:HA	1:A:13:VAL:HG23	1.61	0.81
1:A:15:ASP:HB3	1:A:326:LEU:HD21	1.60	0.81
1:A:367:HIS:HD2	1:A:368:GLY:O	1.64	0.80
1:B:216:ARG:HH21	1:B:216:ARG:HG2	1.46	0.79
1:B:497:ARG:HG3	1:B:497:ARG:NH1	1.95	0.79
1:B:370:PRO:HG3	1:B:411:ILE:HD13	1.63	0.79
1:B:244:ARG:HB2	1:B:265:ARG:NH1	1.99	0.78
1:B:520:HIS:ND1	1:B:532:LEU:HD23	1.99	0.78
1:B:159:ILE:CD1	1:B:164:ILE:HG12	2.14	0.78
1:A:244:ARG:HG2	1:A:244:ARG:HH11	1.48	0.77

*Continued on next page...*

*Continued from previous page...*

Atom-1	Atom-2	Interatomic distance (Å)	Clash overlap (Å)
1:B:299:HIS:HD2	1:B:307:ARG:HE	1.31	0.77
1:B:32:ASP:CB	1:B:97:THR:HG21	2.14	0.77
1:A:159:ILE:CD1	1:A:164:ILE:HG12	2.13	0.76
1:B:13:VAL:O	1:B:17:GLU:HG3	1.85	0.76
1:B:445:SER:HA	1:B:469:ALA:O	1.85	0.76
1:B:254:LEU:CD1	1:B:258:ARG:HB2	2.15	0.76
1:B:319:GLU:HG3	1:B:320:GLY:H	1.50	0.75
1:B:385:LEU:O	1:B:390:PHE:HB2	1.88	0.74
1:A:11:ARG:CA	1:A:14:ARG:HE	1.99	0.74
1:A:472:VAL:HG21	1:A:532:LEU:HD13	1.68	0.74
1:B:18:ARG:HH21	1:B:323:PRO:CB	2.01	0.74
1:A:551:ILE:HG23	1:A:552:PRO:HD2	1.70	0.74
1:B:14:ARG:HD2	4:B:1774:HOH:O	1.87	0.73
1:B:497:ARG:CG	1:B:497:ARG:HH11	2.02	0.73
1:B:224:ASP:OD1	1:B:226:ARG:HB2	1.88	0.73
1:B:351:LEU:HB2	1:B:392:VAL:HB	1.70	0.73
1:A:20:ILE:HG22	1:A:561:MET:HG3	1.71	0.72
1:A:328:ARG:HH11	1:A:328:ARG:HG2	1.52	0.72
1:B:188:ARG:HD2	1:B:190:PHE:CZ	2.25	0.72
1:B:264:ARG:HB3	1:B:269:SER:HB3	1.72	0.72
1:A:24:LYS:HZ3	1:A:41:PHE:HD2	1.40	0.70
1:A:282:GLN:O	1:A:299:HIS:HE1	1.73	0.70
1:B:337:TRP:HB3	1:B:345:ARG:HB3	1.75	0.69
1:B:58:LYS:HE2	1:B:60:ASN:O	1.93	0.69
1:B:160:ARG:HH22	1:B:204:PRO:HG3	1.57	0.69
1:B:528:PRO:HA	4:B:1766:HOH:O	1.92	0.69
1:B:455:LEU:HD12	1:B:516:LEU:HD13	1.74	0.69
1:A:149:ARG:HG3	1:A:149:ARG:HH11	1.58	0.69
1:A:55:GLU:HG3	4:A:833:HOH:O	1.92	0.68
1:B:559:ASN:OD1	1:B:560:THR:HG23	1.93	0.68
1:A:10:SER:HA	1:A:13:VAL:CG2	2.22	0.68
1:A:366:VAL:HG12	1:A:447:GLY:HA2	1.74	0.67
1:B:50:LEU:HD11	1:B:97:THR:CG2	2.22	0.67
1:B:510:ASP:OD2	1:B:542:ARG:NH2	2.27	0.67
1:B:530:LYS:HB3	1:B:531:PRO:HD3	1.76	0.67
1:B:412:ILE:H	1:B:412:ILE:HD12	1.58	0.67
1:A:561:MET:O	1:A:565:VAL:HG23	1.94	0.67
1:A:324:GLU:HG3	1:A:328:ARG:HE	1.58	0.67
1:A:562:GLU:O	1:A:566:LYS:HG3	1.94	0.67
1:A:13:VAL:HG13	1:A:569:LEU:HD11	1.76	0.67
1:B:164:ILE:O	1:B:179:THR:HA	1.94	0.67

*Continued on next page...*

*Continued from previous page...*

Atom-1	Atom-2	Interatomic distance (Å)	Clash overlap (Å)
1:A:65:ASN:ND2	1:A:82:ASP:H	1.93	0.67
1:A:98:SER:C	1:A:100:PRO:HD3	2.16	0.66
1:A:160:ARG:NH1	1:A:202:ILE:O	2.28	0.66
1:B:431:ARG:HH11	1:B:431:ARG:HG3	1.60	0.66
1:A:42:SER:O	1:A:43:GLU:HB2	1.96	0.65
1:A:477:MET:HE2	1:A:527:THR:HA	1.78	0.65
1:B:181:ASN:OD1	1:B:184:SER:N	2.28	0.65
1:B:197:PHE:HA	1:B:211:GLY:O	1.95	0.65
1:A:194:GLU:HB3	1:A:214:THR:HG22	1.79	0.65
1:B:520:HIS:CE1	1:B:532:LEU:HD23	2.31	0.65
1:A:244:ARG:HG2	1:A:244:ARG:NH1	2.11	0.64
1:B:299:HIS:CD2	1:B:307:ARG:HH21	2.15	0.64
1:B:159:ILE:HG12	1:B:164:ILE:HA	1.78	0.64
1:B:294:LYS:HE2	4:B:1751:HOH:O	1.95	0.64
1:A:31:VAL:HG22	1:A:74:VAL:O	1.97	0.63
1:B:256:ASP:O	1:B:258:ARG:N	2.29	0.63
1:B:35:LYS:HD3	1:B:50:LEU:HD13	1.79	0.63
1:B:65:ASN:HD22	1:B:81:ARG:HA	1.63	0.63
1:B:290:LEU:HD23	1:B:294:LYS:O	1.97	0.63
1:A:149:ARG:HG3	1:A:149:ARG:NH1	2.13	0.63
1:A:547:GLU:HB3	1:B:552:PRO:HD3	1.81	0.63
1:A:238:LYS:HA	1:A:238:LYS:HE2	1.80	0.63
1:A:151:PRO:HD2	1:A:170:PHE:CE2	2.34	0.63
1:B:65:ASN:HD21	1:B:82:ASP:H	1.47	0.62
1:B:324:GLU:OE2	1:B:324:GLU:HA	1.98	0.62
1:B:62:GLU:HB3	1:B:63:PRO:HD2	1.81	0.62
1:B:94:LYS:HB2	1:B:106:LEU:HD21	1.80	0.62
1:B:31:VAL:HG13	1:B:32:ASP:N	2.14	0.62
1:A:431:ARG:NH1	1:A:431:ARG:HG2	2.13	0.62
1:A:347:PRO:HG2	1:A:396:ASN:HB2	1.81	0.62
1:A:508:HIS:HD2	1:A:511:ARG:HH12	1.47	0.62
1:B:31:VAL:HG22	1:B:74:VAL:O	2.01	0.61
1:B:65:ASN:ND2	1:B:82:ASP:H	1.97	0.61
1:B:319:GLU:HG3	1:B:320:GLY:N	2.15	0.61
1:B:412:ILE:N	1:B:412:ILE:HD12	2.15	0.61
1:B:524:ASP:HB3	4:B:1766:HOH:O	1.99	0.61
1:A:251:LEU:HD12	1:A:251:LEU:C	2.21	0.61
1:B:104:GLN:O	1:B:106:LEU:HD23	2.01	0.60
1:B:18:ARG:HH21	1:B:323:PRO:HB2	1.66	0.60
1:A:31:VAL:HG13	1:A:32:ASP:N	2.16	0.60
1:B:246:THR:HG22	1:B:265:ARG:HA	1.81	0.60

*Continued on next page...*

*Continued from previous page...*

Atom-1	Atom-2	Interatomic distance (Å)	Clash overlap (Å)
1:B:510:ASP:CG	1:B:542:ARG:HE	2.04	0.60
1:B:86:GLY:O	1:B:555:GLY:HA3	2.02	0.60
1:A:471:VAL:HG22	1:A:477:MET:HE1	1.84	0.60
1:B:481:SER:HB3	1:B:485:PHE:HB2	1.84	0.60
1:A:84:SER:HB3	1:A:89:GLN:HB2	1.84	0.60
1:B:487:ASN:OD1	1:B:491:GLN:NE2	2.33	0.60
1:A:227:ASP:OD1	1:A:228:GLY:N	2.34	0.59
1:A:472:VAL:HG21	1:A:532:LEU:CD1	2.30	0.59
1:B:431:ARG:HG3	1:B:431:ARG:NH1	2.17	0.59
1:B:367:HIS:HE1	1:B:400:SER:OG	1.85	0.59
1:A:90:HIS:O	1:A:111:PRO:HA	2.03	0.59
1:B:366:VAL:HG21	1:B:441:ILE:HD11	1.84	0.59
1:B:455:LEU:CD1	1:B:516:LEU:HD13	2.32	0.59
1:A:24:LYS:O	1:A:40:GLY:HA2	2.02	0.59
1:A:547:GLU:CB	1:B:552:PRO:HD3	2.33	0.59
1:A:99:ARG:HG2	1:A:99:ARG:HH11	1.68	0.58
1:B:163:LEU:HD23	1:B:202:ILE:HD13	1.85	0.58
1:B:278:VAL:HG13	1:B:312:PRO:HG3	1.85	0.58
1:B:333:SER:HA	1:B:350:VAL:O	2.03	0.58
1:B:50:LEU:CD1	1:B:97:THR:HG22	2.30	0.58
1:B:13:VAL:O	1:B:17:GLU:CG	2.51	0.58
1:A:15:ASP:HB3	1:A:326:LEU:CD2	2.32	0.58
1:B:234:GLU:OE1	1:B:238:LYS:HE3	2.03	0.58
1:A:388:ALA:O	1:A:579:ARG:NH2	2.28	0.58
1:A:69:ASP:HB2	1:A:118:VAL:HG22	1.86	0.58
1:B:427:ALA:HB1	1:B:439:LEU:HD13	1.86	0.58
1:A:558:ILE:O	1:A:558:ILE:HG23	2.03	0.57
1:B:367:HIS:HD2	1:B:368:GLY:O	1.86	0.57
1:B:52:ASP:OD1	1:B:292:ARG:NH2	2.37	0.57
1:A:219:ARG:NH1	1:A:232:ASP:OD1	2.37	0.57
1:B:27:LEU:HD22	1:B:296:VAL:HG12	1.86	0.57
1:B:325:ASP:OD1	1:B:326:LEU:N	2.38	0.57
1:B:90:HIS:HD2	1:B:114:ILE:H	1.51	0.57
1:A:282:GLN:O	1:A:299:HIS:CE1	2.56	0.57
1:A:324:GLU:OE1	1:A:327:ARG:NH2	2.37	0.57
1:B:381:PHE:CE2	1:B:568:LEU:HD13	2.39	0.56
1:B:457:MET:O	1:B:458:LYS:HD2	2.04	0.56
1:A:285:HIS:HA	1:A:298:SER:O	2.05	0.56
1:A:449:TYR:HB2	1:A:471:VAL:HB	1.86	0.56
1:B:160:ARG:NH2	1:B:204:PRO:HG3	2.21	0.56
1:B:216:ARG:HG2	1:B:216:ARG:NH2	2.14	0.56

*Continued on next page...*

*Continued from previous page...*

Atom-1	Atom-2	Interatomic distance (Å)	Clash overlap (Å)
1:B:246:THR:CG2	1:B:265:ARG:HA	2.36	0.56
1:B:71:HIS:O	1:B:74:VAL:HG13	2.05	0.56
1:B:263:ALA:O	1:B:269:SER:HB2	2.06	0.56
1:B:446:TYR:O	1:B:449:TYR:HB3	2.05	0.56
1:B:96:ASN:ND2	1:B:99:ARG:HH21	2.04	0.56
1:A:68:LEU:HD22	1:A:117:GLY:HA3	1.88	0.56
1:B:159:ILE:HD13	1:B:164:ILE:HG12	1.88	0.56
1:B:12:ILE:O	1:B:14:ARG:N	2.39	0.56
1:A:472:VAL:CG2	1:A:532:LEU:HD13	2.35	0.56
1:A:258:ARG:HG2	1:A:274:ASP:OD2	2.05	0.56
1:A:508:HIS:CD2	1:A:511:ARG:HH12	2.24	0.56
1:B:201:SER:CB	1:B:252:GLY:HA2	2.35	0.56
1:B:168:GLY:HA3	1:B:170:PHE:CZ	2.41	0.55
1:B:50:LEU:CG	1:B:59:LEU:HD21	2.26	0.55
1:A:42:SER:O	1:A:43:GLU:CB	2.54	0.55
1:B:468:GLY:HA2	1:B:519:ILE:O	2.05	0.55
1:B:496:SER:OG	1:B:499:ILE:HG12	2.07	0.55
1:A:366:VAL:CG1	1:A:447:GLY:HA2	2.37	0.55
1:B:133:ARG:NH1	1:B:149:ARG:NH2	2.55	0.55
1:B:15:ASP:O	1:B:19:LEU:HD12	2.07	0.55
1:B:47:ASN:HB2	1:B:49:TYR:CZ	2.41	0.55
1:B:75:GLY:C	1:B:97:THR:HG1	2.09	0.55
1:B:194:GLU:OE1	1:B:219:ARG:NH2	2.40	0.54
1:B:264:ARG:HA	1:B:269:SER:HA	1.89	0.54
1:A:90:HIS:CD2	1:A:114:ILE:H	2.25	0.54
1:B:466:VAL:HG22	1:B:517:ALA:HB3	1.88	0.54
1:A:317:LEU:N	1:A:317:LEU:HD23	2.22	0.54
1:A:577:THR:O	1:A:580:GLU:HG3	2.07	0.54
1:A:74:VAL:HG23	1:A:76:ARG:H	1.72	0.54
1:B:516:LEU:HD21	1:B:518:LEU:HD21	1.89	0.54
1:B:68:LEU:CD1	1:B:78:ILE:HG21	2.35	0.54
1:B:412:ILE:H	1:B:412:ILE:CD1	2.20	0.54
1:B:24:LYS:HG3	1:B:306:PRO:HD2	1.90	0.54
1:A:199:SER:HB2	4:A:835:HOH:O	2.07	0.54
1:B:12:ILE:C	1:B:14:ARG:N	2.60	0.53
1:A:15:ASP:CB	1:A:326:LEU:HD21	2.33	0.53
1:A:455:LEU:CD1	1:A:514:GLU:HB2	2.38	0.53
1:B:226:ARG:HH11	1:B:226:ARG:HG3	1.73	0.53
1:B:52:ASP:O	1:B:54:GLY:N	2.34	0.53
1:A:90:HIS:HD2	1:A:114:ILE:H	1.57	0.53
1:B:254:LEU:HB3	1:B:255:PRO:CD	2.39	0.53

*Continued on next page...*

*Continued from previous page...*

Atom-1	Atom-2	Interatomic distance (Å)	Clash overlap (Å)
1:A:558:ILE:HD11	1:A:563:ASP:C	2.29	0.53
1:A:558:ILE:HD11	1:A:563:ASP:CB	2.38	0.53
1:B:419:GLU:HG3	4:B:1755:HOH:O	2.09	0.53
1:A:24:LYS:NZ	1:A:41:PHE:HD2	2.07	0.53
1:A:441:ILE:O	1:A:465:GLY:HA2	2.09	0.53
1:B:516:LEU:CD2	1:B:518:LEU:HD21	2.38	0.52
1:B:35:LYS:HG2	1:B:52:ASP:OD2	2.09	0.52
1:A:324:GLU:HG3	1:A:328:ARG:NE	2.23	0.52
1:A:462:PHE:O	1:A:514:GLU:HG2	2.09	0.52
1:B:188:ARG:HB3	1:B:190:PHE:CE1	2.44	0.52
1:B:382:ALA:HB1	1:B:392:VAL:HG11	1.91	0.52
1:B:471:VAL:HG13	1:B:477:MET:HE3	1.90	0.52
1:A:159:ILE:HD13	1:A:164:ILE:HA	1.91	0.52
1:B:310:SER:O	1:B:314:GLY:N	2.37	0.52
1:A:367:HIS:HE1	1:A:400:SER:OG	1.92	0.52
1:A:294:LYS:HG3	4:A:856:HOH:O	2.09	0.52
1:A:18:ARG:NH1	1:A:325:ASP:OD1	2.36	0.52
1:A:153:PHE:HE1	1:A:488:PHE:HB2	1.75	0.52
1:B:381:PHE:CD2	1:B:568:LEU:HD13	2.45	0.52
1:A:71:HIS:O	1:A:74:VAL:HG13	2.09	0.52
1:B:323:PRO:HD2	1:B:326:LEU:HD12	1.92	0.52
1:B:440:TYR:CE2	1:B:463:LYS:HB3	2.45	0.52
1:B:64:ILE:HG22	1:B:81:ARG:HB2	1.90	0.52
1:B:529:LEU:HD11	1:B:550:ILE:HD13	1.92	0.51
1:B:178:PHE:CD1	1:B:187:LEU:HD21	2.45	0.51
1:B:187:LEU:HD12	1:B:189:VAL:HG23	1.92	0.51
1:A:166:GLY:HA3	1:A:178:PHE:CZ	2.45	0.51
1:B:12:ILE:O	1:B:13:VAL:C	2.49	0.51
1:B:456:THR:O	1:B:457:MET:HE2	2.10	0.51
1:B:319:GLU:CG	1:B:320:GLY:N	2.73	0.51
1:A:573:PHE:HD2	3:A:751:GOL:HO1	0.71	0.51
1:B:18:ARG:HH21	1:B:323:PRO:HB3	1.76	0.51
1:B:32:ASP:HB2	1:B:97:THR:CG2	2.26	0.51
1:B:237:SER:HB3	1:B:276:GLU:N	2.26	0.51
1:B:18:ARG:O	1:B:22:VAL:HG23	2.11	0.51
1:B:235:LEU:HD13	1:B:275:GLY:N	2.26	0.51
1:A:235:LEU:HD21	1:A:259:LEU:HD23	1.92	0.51
1:B:18:ARG:HE	1:B:323:PRO:HG2	1.74	0.51
1:B:96:ASN:HD22	1:B:99:ARG:HH21	1.58	0.50
1:A:10:SER:CA	1:A:13:VAL:HG23	2.37	0.50
1:A:190:PHE:CD1	1:A:190:PHE:N	2.79	0.50

*Continued on next page...*

*Continued from previous page...*

Atom-1	Atom-2	Interatomic distance (Å)	Clash overlap (Å)
1:B:147:LEU:HD22	1:B:185:GLY:HA2	1.92	0.50
1:A:26:SER:HA	4:A:778:HOH:O	2.11	0.50
1:B:509:VAL:HG12	1:B:542:ARG:HD3	1.93	0.50
1:B:581:ARG:HH11	1:B:581:ARG:HG2	1.77	0.50
1:B:219:ARG:HG3	1:B:219:ARG:HH11	1.77	0.50
1:B:299:HIS:HD2	1:B:307:ARG:NE	2.06	0.50
1:B:346:VAL:HG21	1:B:422:ASP:HB3	1.92	0.50
1:A:475:GLU:O	1:A:478:TYR:HB3	2.12	0.50
1:A:508:HIS:CD2	1:A:511:ARG:NH1	2.80	0.50
1:B:349:TYR:CE1	1:B:375:SER:HA	2.47	0.50
1:B:48:ALA:C	1:B:59:LEU:HD12	2.31	0.50
1:A:477:MET:CE	1:A:527:THR:HA	2.41	0.49
1:B:164:ILE:HD11	1:B:182:LEU:HA	1.94	0.49
1:A:65:ASN:HD22	1:A:82:ASP:H	1.59	0.49
1:B:239:ASP:HB2	1:B:275:GLY:O	2.12	0.49
1:A:9:PHE:HB3	4:A:789:HOH:O	2.13	0.49
1:B:366:VAL:HG11	1:B:450:MET:HG3	1.93	0.49
1:B:520:HIS:ND1	1:B:532:LEU:CD2	2.74	0.49
1:B:292:ARG:HB3	4:B:1751:HOH:O	2.11	0.49
1:B:551:ILE:HG23	1:B:566:LYS:HD2	1.94	0.49
1:A:534:ARG:HG2	1:A:534:ARG:HH11	1.77	0.49
1:B:455:LEU:HD11	1:B:465:GLY:HA3	1.94	0.49
1:A:551:ILE:CG2	1:A:552:PRO:HD2	2.41	0.49
1:A:542:ARG:HG3	1:A:542:ARG:HH11	1.78	0.49
1:B:12:ILE:O	1:B:15:ASP:N	2.46	0.49
1:B:273:ILE:HD11	1:B:278:VAL:HG21	1.94	0.49
1:B:75:GLY:C	1:B:97:THR:OG1	2.52	0.49
1:A:132:ASP:HB3	4:A:786:HOH:O	2.13	0.48
1:A:139:LEU:HD12	1:A:143:GLY:C	2.33	0.48
1:A:520:HIS:ND1	1:A:532:LEU:HD22	2.28	0.48
1:B:212:LEU:HD23	1:B:219:ARG:NH1	2.28	0.48
1:B:370:PRO:O	1:B:372:ALA:N	2.41	0.48
1:A:32:ASP:OD2	1:A:35:LYS:HE3	2.12	0.48
1:B:32:ASP:HB3	1:B:35:LYS:HD2	1.94	0.48
1:B:465:GLY:O	1:B:516:LEU:HD12	2.13	0.48
1:B:472:VAL:CG2	1:B:532:LEU:HD13	2.29	0.48
1:B:250:TRP:CG	1:B:251:LEU:N	2.82	0.48
1:A:99:ARG:N	1:A:100:PRO:HD3	2.29	0.48
1:B:190:PHE:CD1	1:B:190:PHE:N	2.82	0.48
1:B:21:ALA:CB	1:B:561:MET:HE1	2.44	0.48
1:B:534:ARG:HD3	4:B:1743:HOH:O	2.12	0.48

*Continued on next page...*



*Continued from previous page...*

Atom-1	Atom-2	Interatomic distance (Å)	Clash overlap (Å)
1:B:431:ARG:O	1:B:433:SER:N	2.47	0.48
1:B:476:GLU:HG2	1:B:531:PRO:HG3	1.95	0.47
1:B:297:THR:HG23	1:B:298:SER:O	2.13	0.47
4:A:794:HOH:O	1:B:566:LYS:HG2	2.14	0.47
1:A:153:PHE:CE1	1:A:488:PHE:HB2	2.49	0.47
1:A:489:ILE:HG12	2:A:701:4NP:O5	2.14	0.47
1:B:251:LEU:HD12	1:B:251:LEU:C	2.34	0.47
1:B:542:ARG:NH1	1:B:542:ARG:HG2	2.28	0.47
1:A:369:GLY:O	2:A:701:4NP:O2	2.33	0.47
1:B:250:TRP:CE2	1:B:287:ARG:HB2	2.49	0.47
1:A:90:HIS:HB2	1:A:114:ILE:HG12	1.96	0.47
1:A:322:LEU:HD22	1:A:323:PRO:HD2	1.96	0.47
1:B:302:LEU:HD22	1:B:351:LEU:HD21	1.95	0.47
1:A:534:ARG:NH1	1:A:534:ARG:HG2	2.30	0.47
1:A:328:ARG:NH1	1:A:328:ARG:HG2	2.27	0.47
1:A:11:ARG:O	1:A:14:ARG:NE	2.48	0.47
1:A:558:ILE:HD11	1:A:563:ASP:HB3	1.96	0.47
1:B:216:ARG:H	1:B:216:ARG:HD2	1.79	0.47
1:B:36:LEU:HD12	1:B:51:TYR:HD2	1.80	0.47
1:B:520:HIS:O	1:B:550:ILE:HA	2.15	0.47
1:A:445:SER:OG	2:A:701:4NP:O3	2.27	0.47
1:A:552:PRO:HD3	1:B:547:GLU:CB	2.44	0.47
1:B:399:GLY:HA2	1:B:408:ARG:O	2.15	0.47
1:A:233:LEU:HD23	1:A:234:GLU:H	1.80	0.46
1:B:27:LEU:CD2	1:B:296:VAL:HG12	2.45	0.46
1:B:493:THR:O	1:B:496:SER:HB3	2.15	0.46
1:B:201:SER:OG	1:B:252:GLY:HA2	2.15	0.46
1:B:466:VAL:HG11	1:B:571:ALA:HB1	1.98	0.46
1:B:290:LEU:HA	1:B:294:LYS:O	2.15	0.46
1:B:520:HIS:HA	1:B:521:PRO:HD3	1.76	0.46
1:A:397:TYR:CD1	1:A:419:GLU:HB2	2.49	0.46
1:A:240:PHE:HA	1:A:272:PHE:CE2	2.51	0.46
1:A:14:ARG:HD2	1:A:15:ASP:OD2	2.15	0.46
1:A:324:GLU:HA	1:A:324:GLU:OE2	2.15	0.46
1:B:498:GLU:O	1:B:502:SER:HB3	2.15	0.46
1:B:106:LEU:N	1:B:106:LEU:HD23	2.31	0.46
1:B:217:GLU:HG2	1:B:245:PRO:O	2.16	0.46
1:B:579:ARG:HD2	4:B:1714:HOH:O	2.15	0.46
1:A:319:GLU:HG2	4:A:792:HOH:O	2.16	0.46
1:B:168:GLY:HA3	1:B:170:PHE:CE2	2.50	0.46
1:B:19:LEU:HD22	1:B:383:ALA:CB	2.46	0.46

*Continued on next page...*

*Continued from previous page...*

Atom-1	Atom-2	Interatomic distance (Å)	Clash overlap (Å)
1:A:94:LYS:HB2	1:A:106:LEU:HD21	1.97	0.46
1:B:231:GLU:HB3	4:B:1722:HOH:O	2.15	0.46
1:A:151:PRO:HD2	1:A:170:PHE:CD2	2.51	0.45
1:A:497:ARG:HH11	1:A:497:ARG:CB	2.29	0.45
1:A:238:LYS:CA	1:A:238:LYS:HE2	2.46	0.45
1:B:309:VAL:HG12	1:B:316:PRO:HA	1.98	0.45
1:A:31:VAL:O	1:A:32:ASP:C	2.55	0.45
1:B:235:LEU:HD13	1:B:274:ASP:C	2.36	0.45
1:B:169:PHE:CE2	1:B:175:VAL:HG22	2.51	0.45
1:A:552:PRO:HD3	1:B:547:GLU:HB3	1.98	0.45
1:A:188:ARG:NE	4:A:847:HOH:O	2.49	0.45
1:A:336:VAL:HG23	1:A:348:THR:HB	1.98	0.45
1:B:162:ASP:OD1	1:B:182:LEU:HB3	2.16	0.45
1:B:18:ARG:O	1:B:22:VAL:CG2	2.65	0.45
1:B:348:THR:HG23	1:B:394:MET:C	2.36	0.45
1:B:381:PHE:HD2	1:B:442:MET:CE	2.30	0.45
1:A:497:ARG:CG	1:A:497:ARG:HH11	2.29	0.45
1:A:20:ILE:CG2	1:A:561:MET:HG3	2.44	0.45
1:B:99:ARG:N	1:B:100:PRO:HD3	2.32	0.45
1:B:569:LEU:N	1:B:570:PRO:HD2	2.32	0.45
1:A:10:SER:O	1:A:13:VAL:HG23	2.16	0.45
1:A:34:ASP:HB3	4:A:774:HOH:O	2.16	0.45
1:A:65:ASN:ND2	1:A:82:ASP:N	2.64	0.45
1:B:90:HIS:CD2	1:B:114:ILE:H	2.34	0.45
1:A:445:SER:HG	2:A:701:4NP:P	2.40	0.45
1:B:264:ARG:HB2	1:B:268:ARG:O	2.17	0.45
1:B:21:ALA:HB2	1:B:561:MET:HE1	1.99	0.45
1:B:227:ASP:OD1	1:B:229:SER:OG	2.31	0.45
1:B:295:LEU:HB2	1:B:311:LEU:O	2.17	0.45
1:B:325:ASP:OD1	1:B:325:ASP:C	2.56	0.44
1:B:32:ASP:OD1	1:B:97:THR:HB	2.16	0.44
1:B:9:PHE:O	1:B:12:ILE:HG13	2.17	0.44
1:A:224:ASP:HB3	1:A:229:SER:OG	2.17	0.44
1:A:445:SER:HA	1:A:469:ALA:O	2.17	0.44
1:A:99:ARG:HG2	1:A:99:ARG:NH1	2.31	0.44
1:B:96:ASN:ND2	1:B:99:ARG:NH2	2.65	0.44
1:A:367:HIS:CD2	1:A:368:GLY:O	2.57	0.44
1:A:532:LEU:O	1:A:536:MET:HE3	2.18	0.44
1:B:48:ALA:O	1:B:59:LEU:HD12	2.18	0.44
1:A:508:HIS:HD2	1:A:511:ARG:NH1	2.13	0.44
1:B:117:GLY:HA2	1:B:126:PHE:HA	2.00	0.44

*Continued on next page...*

*Continued from previous page...*

Atom-1	Atom-2	Interatomic distance (Å)	Clash overlap (Å)
1:B:159:ILE:HD11	1:B:164:ILE:HG12	1.95	0.44
1:B:256:ASP:O	1:B:258:ARG:HG3	2.17	0.44
1:B:84:SER:HB3	1:B:89:GLN:HB2	1.99	0.44
1:A:336:VAL:CG2	1:A:348:THR:HB	2.48	0.44
1:B:24:LYS:CG	1:B:306:PRO:HD2	2.48	0.44
1:A:342:ASP:OD1	1:A:344:SER:HB2	2.18	0.43
1:A:532:LEU:CD1	1:A:535:LEU:HD23	2.48	0.43
1:A:10:SER:C	1:A:12:ILE:N	2.71	0.43
1:A:328:ARG:HH11	1:A:328:ARG:CG	2.24	0.43
1:A:431:ARG:CG	1:A:431:ARG:NH1	2.81	0.43
1:B:370:PRO:CG	1:B:411:ILE:HD13	2.43	0.43
1:B:98:SER:C	1:B:100:PRO:HD3	2.39	0.43
1:B:46:VAL:HB	1:B:64:ILE:O	2.18	0.43
1:B:133:ARG:NH1	1:B:146:GLU:OE1	2.51	0.43
1:B:538:GLU:O	1:B:542:ARG:HG3	2.18	0.43
1:A:558:ILE:CD1	1:A:563:ASP:HB3	2.48	0.43
1:B:125:VAL:HG21	1:B:159:ILE:CD1	2.48	0.43
1:B:445:SER:HB3	1:B:446:TYR:H	1.69	0.43
1:B:510:ASP:CG	1:B:542:ARG:NE	2.72	0.43
1:A:561:MET:O	1:A:561:MET:HG2	2.19	0.43
1:B:125:VAL:HG13	1:B:137:TYR:O	2.18	0.43
1:B:78:ILE:HG22	1:B:78:ILE:O	2.18	0.43
1:B:188:ARG:HB3	1:B:190:PHE:HE1	1.83	0.43
1:A:233:LEU:CD2	1:A:234:GLU:N	2.82	0.43
1:A:390:PHE:CE1	1:A:579:ARG:NH2	2.87	0.43
1:B:19:LEU:O	1:B:24:LYS:NZ	2.51	0.43
1:B:398:ARG:HD2	1:B:418:GLY:HA3	2.01	0.43
1:A:532:LEU:HD12	1:A:535:LEU:HD23	2.01	0.42
1:B:254:LEU:HB3	1:B:255:PRO:HD2	2.01	0.42
1:B:463:LYS:NZ	1:B:581:ARG:HA	2.34	0.42
1:B:65:ASN:ND2	1:B:81:ARG:HA	2.31	0.42
1:A:134:VAL:HG12	1:A:150:LEU:HD12	2.00	0.42
1:B:366:VAL:HG11	1:B:450:MET:CB	2.49	0.42
1:B:360:GLY:O	1:B:436:ALA:HA	2.20	0.42
1:B:486:ARG:HG3	1:B:486:ARG:HH11	1.84	0.42
1:A:194:GLU:HB3	1:A:214:THR:CG2	2.49	0.42
1:A:205:GLY:O	1:A:206:MET:HB2	2.20	0.42
1:A:233:LEU:HD23	1:A:234:GLU:N	2.34	0.42
1:A:25:TYR:CE1	1:A:318:LEU:HG	2.55	0.42
1:B:390:PHE:CE1	1:B:579:ARG:NH2	2.87	0.42
1:B:406:GLU:O	1:B:410:LYS:HG3	2.20	0.42

*Continued on next page...*

*Continued from previous page...*

Atom-1	Atom-2	Interatomic distance (Å)	Clash overlap (Å)
1:B:542:ARG:HH11	1:B:542:ARG:CG	2.32	0.42
1:A:569:LEU:HB3	1:A:570:PRO:HD3	2.01	0.42
1:B:19:LEU:HD22	1:B:383:ALA:HB1	2.02	0.42
1:B:471:VAL:HG22	1:B:477:MET:HE1	2.02	0.42
1:B:50:LEU:HG	1:B:59:LEU:CD2	2.29	0.42
1:A:16:VAL:HG22	1:A:384:SER:HB2	2.02	0.42
1:A:468:GLY:HA2	1:A:519:ILE:O	2.20	0.42
1:A:444:TYR:HA	1:A:468:GLY:O	2.18	0.42
1:B:46:VAL:HG23	1:B:559:ASN:O	2.19	0.42
1:A:65:ASN:HD21	1:A:82:ASP:CB	2.32	0.42
1:B:358:THR:HA	1:B:359:PRO:C	2.40	0.42
1:A:52:ASP:OD1	1:A:292:ARG:NH2	2.53	0.42
1:B:481:SER:HB3	1:B:485:PHE:CB	2.49	0.42
4:A:794:HOH:O	1:B:566:LYS:CG	2.68	0.42
1:B:115:LEU:O	1:B:116:SER:HB3	2.20	0.41
1:B:204:PRO:C	1:B:206:MET:H	2.23	0.41
1:A:113:ARG:HH11	1:A:113:ARG:HG3	1.85	0.41
1:A:384:SER:O	1:A:387:ALA:HB3	2.21	0.41
1:B:411:ILE:CD1	1:B:419:GLU:HG2	2.51	0.41
1:B:337:TRP:CE3	1:B:347:PRO:HG3	2.55	0.41
1:B:504:SER:HA	1:B:505:PRO:HD2	1.90	0.41
1:A:178:PHE:HA	1:A:188:ARG:O	2.21	0.41
1:A:455:LEU:HD11	1:A:514:GLU:HB2	2.03	0.41
1:B:152:GLY:O	1:B:153:PHE:C	2.58	0.41
1:B:222:THR:OG1	1:B:233:LEU:HD23	2.20	0.41
1:A:159:ILE:CD1	1:A:164:ILE:HG23	2.51	0.41
1:B:281:PRO:HB2	1:B:299:HIS:CE1	2.55	0.41
1:A:317:LEU:N	1:A:317:LEU:CD2	2.83	0.41
1:A:497:ARG:CG	1:A:497:ARG:NH1	2.82	0.41
1:B:408:ARG:HG2	1:B:408:ARG:NH1	2.36	0.41
1:A:477:MET:HE2	1:A:527:THR:HG22	2.03	0.41
1:A:30:VAL:HB	1:A:72:TYR:CD2	2.56	0.41
1:B:445:SER:OG	1:B:556:HIS:CE1	2.73	0.41
1:B:90:HIS:HB2	1:B:114:ILE:HG12	2.03	0.41
1:B:61:ARG:NH1	1:B:101:GLY:O	2.54	0.41
1:A:139:LEU:HD12	1:A:143:GLY:O	2.21	0.41
1:A:413:GLY:N	1:A:492:LEU:O	2.46	0.41
1:A:558:ILE:O	1:A:558:ILE:CG2	2.69	0.41
1:B:315:GLU:HA	1:B:316:PRO:HD2	1.88	0.41
1:A:520:HIS:HA	1:A:521:PRO:HD3	1.90	0.40
1:A:62:GLU:HB3	1:A:63:PRO:HD2	2.02	0.40

*Continued on next page...*

Continued from previous page...

Atom-1	Atom-2	Interatomic distance (Å)	Clash overlap (Å)
1:B:420:LEU:HD22	1:B:453:CYS:HB3	2.03	0.40
1:A:10:SER:C	1:A:12:ILE:H	2.24	0.40
1:A:207:LYS:HE2	1:A:224:ASP:OD2	2.21	0.40
1:A:533:LEU:HD23	1:A:536:MET:HE3	2.04	0.40
1:B:415:PRO:O	1:B:416:CYS:HB3	2.21	0.40
1:A:348:THR:HG21	1:A:393:VAL:HG13	2.02	0.40
1:A:153:PHE:CZ	1:A:484:ALA:HB1	2.57	0.40
1:B:175:VAL:HB	1:B:196:SER:HB3	2.02	0.40
1:B:19:LEU:CD2	1:B:383:ALA:HB1	2.51	0.40
1:B:419:GLU:OE2	1:B:420:LEU:N	2.53	0.40
1:A:381:PHE:O	1:A:385:LEU:HG	2.22	0.40
1:B:116:SER:HB2	4:B:1781:HOH:O	2.21	0.40
1:B:219:ARG:NH1	1:B:219:ARG:HG3	2.35	0.40
1:B:408:ARG:HH11	1:B:408:ARG:HG2	1.86	0.40

There are no symmetry-related clashes.

## 5.3 Torsion angles [i](#)

### 5.3.1 Protein backbone [i](#)

In the following table, the Percentiles column shows the percent Ramachandran outliers of the chain as a percentile score with respect to all X-ray entries followed by that with respect to entries of similar resolution.

The Analysed column shows the number of residues for which the backbone conformation was analysed, and the total number of residues.

Mol	Chain	Analysed	Favoured	Allowed	Outliers	Percentiles	
1	A	571/582 (98%)	530 (93%)	38 (7%)	3 (0%)	29	54
1	B	571/582 (98%)	510 (89%)	49 (9%)	12 (2%)	7	18
All	All	1142/1164 (98%)	1040 (91%)	87 (8%)	15 (1%)	12	30

All (15) Ramachandran outliers are listed below:

Mol	Chain	Res	Type
1	B	257	GLY
1	B	13	VAL
1	B	54	GLY
1	B	432	GLU

Continued on next page...

*Continued from previous page...*

Mol	Chain	Res	Type
1	A	445	SER
1	B	61	ARG
1	B	72	TYR
1	B	120	THR
1	B	371	PHE
1	A	10	SER
1	A	217	GLU
1	B	53	GLY
1	B	116	SER
1	B	12	ILE
1	B	121	GLY

### 5.3.2 Protein sidechains ⓘ

In the following table, the Percentiles column shows the percent sidechain outliers of the chain as a percentile score with respect to all X-ray entries followed by that with respect to entries of similar resolution.

The Analysed column shows the number of residues for which the sidechain conformation was analysed, and the total number of residues.

Mol	Chain	Analysed	Rotameric	Outliers	Percentiles	
1	A	460/469 (98%)	424 (92%)	36 (8%)	12	29
1	B	460/469 (98%)	412 (90%)	48 (10%)	7	16
All	All	920/938 (98%)	836 (91%)	84 (9%)	9	21

All (84) residues with a non-rotameric sidechain are listed below:

Mol	Chain	Res	Type
1	A	11	ARG
1	A	13	VAL
1	A	14	ARG
1	A	31	VAL
1	A	38	VAL
1	A	56	THR
1	A	61	ARG
1	A	74	VAL
1	A	99	ARG
1	A	133	ARG
1	A	149	ARG
1	A	176	SER

*Continued on next page...*

*Continued from previous page...*

Mol	Chain	Res	Type
1	A	190	PHE
1	A	191	ASP
1	A	220	LEU
1	A	224	ASP
1	A	231	GLU
1	A	233	LEU
1	A	246	THR
1	A	265	ARG
1	A	290	LEU
1	A	317	LEU
1	A	319	GLU
1	A	328	ARG
1	A	384	SER
1	A	405	GLU
1	A	445	SER
1	A	452	LEU
1	A	455	LEU
1	A	480	LEU
1	A	490	GLU
1	A	497	ARG
1	A	511	ARG
1	A	513	LYS
1	A	534	ARG
1	A	580	GLU
1	B	11	ARG
1	B	15	ASP
1	B	30	VAL
1	B	31	VAL
1	B	52	ASP
1	B	61	ARG
1	B	62	GLU
1	B	70	PRO
1	B	71	HIS
1	B	96	ASN
1	B	97	THR
1	B	104	GLN
1	B	106	LEU
1	B	110	LYS
1	B	132	ASP
1	B	133	ARG
1	B	162	ASP
1	B	188	ARG

*Continued on next page...*

*Continued from previous page...*

Mol	Chain	Res	Type
1	B	207	LYS
1	B	216	ARG
1	B	233	LEU
1	B	234	GLU
1	B	254	LEU
1	B	279	GLU
1	B	290	LEU
1	B	297	THR
1	B	310	SER
1	B	313	SER
1	B	322	LEU
1	B	325	ASP
1	B	339	GLU
1	B	351	LEU
1	B	384	SER
1	B	419	GLU
1	B	431	ARG
1	B	445	SER
1	B	452	LEU
1	B	453	CYS
1	B	461	LEU
1	B	480	LEU
1	B	497	ARG
1	B	501	ARG
1	B	502	SER
1	B	532	LEU
1	B	534	ARG
1	B	542	ARG
1	B	561	MET
1	B	581	ARG

Some sidechains can be flipped to improve hydrogen bonding and reduce clashes. All (17) such sidechains are listed below:

Mol	Chain	Res	Type
1	A	28	GLN
1	A	65	ASN
1	A	90	HIS
1	A	282	GLN
1	A	285	HIS
1	A	299	HIS
1	A	367	HIS
1	A	508	HIS

*Continued on next page...*



*Continued from previous page...*

Mol	Chain	Res	Type
1	B	65	ASN
1	B	89	GLN
1	B	90	HIS
1	B	96	ASN
1	B	285	HIS
1	B	299	HIS
1	B	367	HIS
1	B	507	ASN
1	B	508	HIS

### 5.3.3 RNA [i](#)

There are no RNA molecules in this entry.

## 5.4 Non-standard residues in protein, DNA, RNA chains [i](#)

There are no non-standard protein/DNA/RNA residues in this entry.

## 5.5 Carbohydrates [i](#)

There are no carbohydrates in this entry.

## 5.6 Ligand geometry [i](#)

3 ligands are modelled in this entry.

In the following table, the Counts columns list the number of bonds (or angles) for which Mogul statistics could be retrieved, the number of bonds (or angles) that are observed in the model and the number of bonds (or angles) that are defined in the Chemical Component Dictionary. The Link column lists molecule types, if any, to which the group is linked. The Z score for a bond length (or angle) is the number of standard deviations the observed value is removed from the expected value. A bond length (or angle) with  $|Z| > 2$  is considered an outlier worth inspection. RMSZ is the root-mean-square of all Z scores of the bond lengths (or angles).

Mol	Type	Chain	Res	Link	Bond lengths			Bond angles		
					Counts	RMSZ	$\# Z  > 2$	Counts	RMSZ	$\# Z  > 2$
3	GOL	A	751	-	5,5,5	3.77	4 (80%)	5,5,5	6.06	3 (60%)
2	4NP	A	701	-	13,14,14	2.64	5 (38%)	18,20,20	1.12	1 (5%)
2	4NP	B	1701	-	13,14,14	2.69	8 (61%)	18,20,20	1.18	1 (5%)

In the following table, the Chirals column lists the number of chiral outliers, the number of chiral centers analysed, the number of these observed in the model and the number defined in the Chemical Component Dictionary. Similar counts are reported in the Torsion and Rings columns. '-' means no outliers of that kind were identified.

Mol	Type	Chain	Res	Link	Chirals	Torsions	Rings
3	GOL	A	751	-	-	2/4/4/4	-
2	4NP	A	701	-	-	0/7/9/9	0/1/1/1
2	4NP	B	1701	-	-	0/7/9/9	0/1/1/1

All (17) bond length outliers are listed below:

Mol	Chain	Res	Type	Atoms	Z	Observed(Å)	Ideal(Å)
3	A	751	GOL	C3-C2	-6.51	1.24	1.51
2	A	701	4NP	O6-N	-6.06	1.12	1.22
2	B	1701	4NP	O6-N	-5.57	1.13	1.22
3	A	751	GOL	C1-C2	-3.78	1.36	1.51
2	B	1701	4NP	P-O3	-3.75	1.40	1.54
2	A	701	4NP	P-O2	-3.67	1.38	1.50
2	B	1701	4NP	P-O2	-3.56	1.39	1.50
2	A	701	4NP	P-O3	-3.54	1.41	1.54
2	A	701	4NP	P-O4	3.13	1.66	1.54
3	A	751	GOL	O3-C3	3.05	1.55	1.42
2	B	1701	4NP	P-O4	2.96	1.66	1.54
2	B	1701	4NP	C5-C4	2.47	1.43	1.38
2	B	1701	4NP	C6-C1	2.46	1.43	1.38
2	B	1701	4NP	C3-C4	2.24	1.43	1.38
2	A	701	4NP	C6-C1	2.17	1.43	1.38
2	B	1701	4NP	C6-C5	2.15	1.42	1.38
3	A	751	GOL	O1-C1	2.05	1.51	1.42

All (5) bond angle outliers are listed below:

Mol	Chain	Res	Type	Atoms	Z	Observed(°)	Ideal(°)
3	A	751	GOL	O3-C3-C2	10.30	159.58	110.20
3	A	751	GOL	O2-C2-C3	8.35	145.92	109.12
3	A	751	GOL	O1-C1-C2	2.45	121.95	110.20
2	B	1701	4NP	C3-C4-N	2.21	121.04	119.38
2	A	701	4NP	O1-P-O2	-2.10	101.40	109.31

There are no chirality outliers.

All (2) torsion outliers are listed below:

Mol	Chain	Res	Type	Atoms
3	A	751	GOL	O1-C1-C2-C3
3	A	751	GOL	C1-C2-C3-O3

There are no ring outliers.

2 monomers are involved in 6 short contacts:

Mol	Chain	Res	Type	Clashes	Symm-Clashes
3	A	751	GOL	2	0
2	A	701	4NP	4	0

## 5.7 Other polymers [i](#)

There are no such residues in this entry.

## 5.8 Polymer linkage issues [i](#)

There are no chain breaks in this entry.

## 6 Fit of model and data ⓘ

### 6.1 Protein, DNA and RNA chains ⓘ

In the following table, the column labelled ‘#RSRZ> 2’ contains the number (and percentage) of RSRZ outliers, followed by percent RSRZ outliers for the chain as percentile scores relative to all X-ray entries and entries of similar resolution. The OWAB column contains the minimum, median, 95<sup>th</sup> percentile and maximum values of the occupancy-weighted average B-factor per residue. The column labelled ‘Q< 0.9’ lists the number of (and percentage) of residues with an average occupancy less than 0.9.

Mol	Chain	Analysed	<RSRZ>	#RSRZ>2	OWAB(Å <sup>2</sup> )	Q<0.9
1	A	573/582 (98%)	-0.36	1 (0%) 95 96	15, 29, 47, 81	0
1	B	573/582 (98%)	-0.09	13 (2%) 60 62	18, 41, 68, 101	0
All	All	1146/1164 (98%)	-0.23	14 (1%) 79 80	15, 33, 63, 101	0

All (14) RSRZ outliers are listed below:

Mol	Chain	Res	Type	RSRZ
1	B	9	PHE	5.1
1	B	315	GLU	3.4
1	B	322	LEU	3.4
1	B	314	GLY	2.7
1	A	216	ARG	2.7
1	B	55	GLU	2.6
1	B	32	ASP	2.5
1	B	72	TYR	2.5
1	B	274	ASP	2.3
1	B	101	GLY	2.3
1	B	243	TYR	2.3
1	B	51	TYR	2.1
1	B	242	SER	2.1
1	B	312	PRO	2.0

### 6.2 Non-standard residues in protein, DNA, RNA chains ⓘ

There are no non-standard protein/DNA/RNA residues in this entry.

### 6.3 Carbohydrates ⓘ

There are no carbohydrates in this entry.

## 6.4 Ligands [i](#)

In the following table, the Atoms column lists the number of modelled atoms in the group and the number defined in the chemical component dictionary. The B-factors column lists the minimum, median, 95<sup>th</sup> percentile and maximum values of B factors of atoms in the group. The column labelled 'Q< 0.9' lists the number of atoms with occupancy less than 0.9.

Mol	Type	Chain	Res	Atoms	RSCC	RSR	B-factors( $\text{\AA}^2$ )	Q<0.9
3	GOL	A	751	6/6	0.79	0.34	52,54,54,56	0
2	4NP	A	701	14/14	0.80	0.31	70,72,74,75	0
2	4NP	B	1701	14/14	0.82	0.28	65,66,72,73	0

## 6.5 Other polymers [i](#)

There are no such residues in this entry.