



# Full wwPDB X-ray Structure Validation Report ⓘ

Jul 19, 2022 – 06:50 AM JST

PDB ID : 7VHC  
Title : Crystal structure of the STX2a complexed with AR4A peptide  
Authors : Senda, M.; Takahashi, M.; Nishikawa, K.; Senda, T.  
Deposited on : 2021-09-22  
Resolution : 1.80 Å(reported)

This is a Full wwPDB X-ray Structure Validation Report for a publicly released PDB entry.

We welcome your comments at [validation@mail.wwpdb.org](mailto:validation@mail.wwpdb.org)

A user guide is available at

<https://www.wwpdb.org/validation/2017/XrayValidationReportHelp>

with specific help available everywhere you see the ⓘ symbol.

The types of validation reports are described at <http://www.wwpdb.org/validation/2017/FAQs#types>.

---

The following versions of software and data (see [references ⓘ](#)) were used in the production of this report:

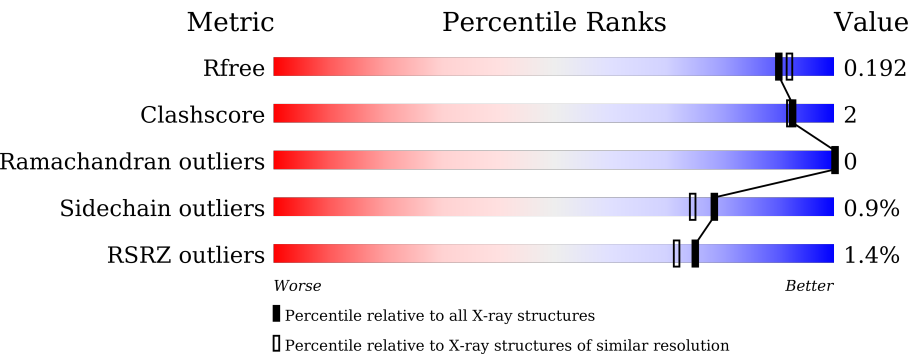
MolProbity : 4.02b-467  
Mogul : ?? (??), CSD ??CSD?? (????)  
Xtriage (Phenix) : 1.13  
EDS : 2.29  
Percentile statistics : 20191225.v01 (using entries in the PDB archive December 25th 2019)  
Refmac : 5.8.0158  
CCP4 : 7.0.044 (Gargrove)  
Ideal geometry (proteins) : Engh & Huber (2001)  
Ideal geometry (DNA, RNA) : Parkinson et al. (1996)  
Validation Pipeline (wwPDB-VP) : 2.29

# 1 Overall quality at a glance i

The following experimental techniques were used to determine the structure:  
*X-RAY DIFFRACTION*

The reported resolution of this entry is 1.80 Å.

Percentile scores (ranging between 0-100) for global validation metrics of the entry are shown in the following graphic. The table shows the number of entries on which the scores are based.



Metric	Whole archive (#Entries)	Similar resolution (#Entries, resolution range(Å))
$R_{free}$	130704	5950 (1.80-1.80)
Clashscore	141614	6793 (1.80-1.80)
Ramachandran outliers	138981	6697 (1.80-1.80)
Sidechain outliers	138945	6696 (1.80-1.80)
RSRZ outliers	127900	5850 (1.80-1.80)

The table below summarises the geometric issues observed across the polymeric chains and their fit to the electron density. The red, orange, yellow and green segments of the lower bar indicate the fraction of residues that contain outliers for  $\geq 3$ , 2, 1 and 0 types of geometric quality criteria respectively. A grey segment represents the fraction of residues that are not modelled. The numeric value for each fraction is indicated below the corresponding segment, with a dot representing fractions  $\leq 5\%$ . The upper red bar (where present) indicates the fraction of residues that have poor fit to the electron density. The numeric value is given above the bar.

Mol	Chain	Length	Quality of chain
1	A	297	<div><div>%</div><div>92%</div><div>• •</div></div>
2	B	70	<div><div>3%</div><div>90%</div><div>6%</div><div>•</div></div>
2	C	70	<div><div>94%</div><div>6%</div></div>
2	D	70	<div><div>%</div><div>94%</div><div>6%</div></div>
2	E	70	<div><div>3%</div><div>96%</div><div>•</div></div>
2	F	70	<div><div>94%</div><div>6%</div></div>

Continued on next page...

Continued from previous page...

Mol	Chain	Length	Quality of chain
3	G	7	<div><div></div><div></div><div></div><div></div></div>

## 2 Entry composition

There are 5 unique types of molecules in this entry. The entry contains 5530 atoms, of which 0 are hydrogens and 0 are deuteriums.

In the tables below, the ZeroOcc column contains the number of atoms modelled with zero occupancy, the AltConf column contains the number of residues with at least one atom in alternate conformation and the Trace column contains the number of residues modelled with at most 2 atoms.

- Molecule 1 is a protein called rRNA N-glycosylase.

Mol	Chain	Residues	Atoms					ZeroOcc	AltConf	Trace
1	A	284	Total	C	N	O	S	0	3	0
			2233	1401	393	432	7			

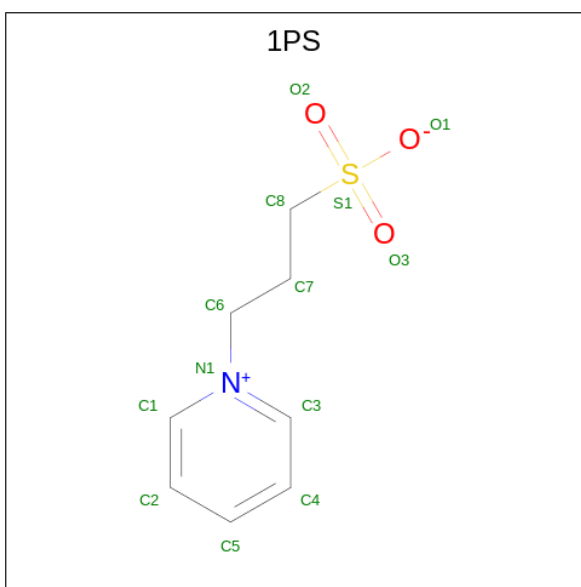
- Molecule 2 is a protein called Shiga toxin 2 B subunit.

Mol	Chain	Residues	Atoms					ZeroOcc	AltConf	Trace
2	B	67	Total	C	N	O	S	0	0	0
			524	330	86	105	3			
2	C	70	Total	C	N	O	S	0	1	0
			555	345	90	117	3			
2	D	70	Total	C	N	O	S	0	0	0
			537	335	88	111	3			
2	E	70	Total	C	N	O	S	0	0	0
			542	339	89	111	3			
2	F	70	Total	C	N	O	S	0	0	0
			545	340	89	113	3			

- Molecule 3 is a protein called inhibitor peptide, ALA-ARG-ARG-ARG-ARG-ALA.

Mol	Chain	Residues	Atoms				ZeroOcc	AltConf	Trace
3	G	6	Total	C	N	O	0	0	1
			50	27	18	5			

- Molecule 4 is 3-PYRIDINIUM-1-YLPROPANE-1-SULFONATE (three-letter code: 1PS) (formula: C<sub>8</sub>H<sub>11</sub>NO<sub>3</sub>S).



Mol	Chain	Residues	Atoms					ZeroOcc	AltConf
4	B	1	Total	C	N	O	S	0	0
			13	8	1	3	1		
4	C	1	Total	C	N	O	S	0	0
			13	8	1	3	1		
4	D	1	Total	C	N	O	S	0	0
			13	8	1	3	1		
4	F	1	Total	C	N	O	S	0	0
			13	8	1	3	1		

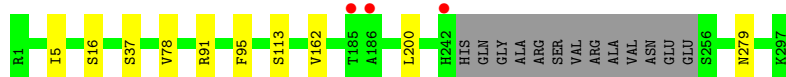
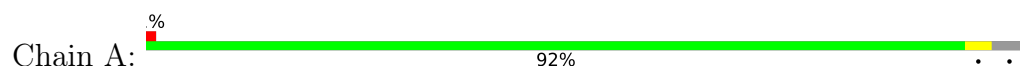
- Molecule 5 is water.

Mol	Chain	Residues	Atoms		ZeroOcc	AltConf
5	A	236	Total	O	0	0
			236	236		
5	B	42	Total	O	0	0
			42	42		
5	C	62	Total	O	0	0
			62	62		
5	D	58	Total	O	0	0
			58	58		
5	E	41	Total	O	0	0
			41	41		
5	F	48	Total	O	0	0
			48	48		
5	G	5	Total	O	0	0
			5	5		

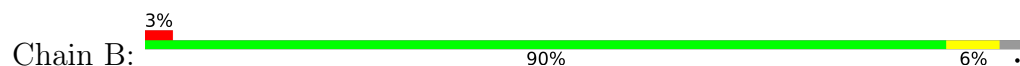
### 3 Residue-property plots

These plots are drawn for all protein, RNA, DNA and oligosaccharide chains in the entry. The first graphic for a chain summarises the proportions of the various outlier classes displayed in the second graphic. The second graphic shows the sequence view annotated by issues in geometry and electron density. Residues are color-coded according to the number of geometric quality criteria for which they contain at least one outlier: green = 0, yellow = 1, orange = 2 and red = 3 or more. A red dot above a residue indicates a poor fit to the electron density ( $RSRZ > 2$ ). Stretches of 2 or more consecutive residues without any outlier are shown as a green connector. Residues present in the sample, but not in the model, are shown in grey.

- Molecule 1: rRNA N-glycosylase



- Molecule 2: Shiga toxin 2 B subunit



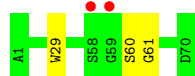
- Molecule 2: Shiga toxin 2 B subunit



- Molecule 2: Shiga toxin 2 B subunit



- Molecule 2: Shiga toxin 2 B subunit



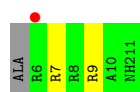
- Molecule 2: Shiga toxin 2 B subunit

Chain F:  94% 6%



- Molecule 3: inhibitor peptide, ALA-ARG-ARG-ARG-ARG-ALA

Chain G:  14% 57% 29% 14%



## 4 Data and refinement statistics

Property	Value	Source
Space group	P 61	Depositor
Cell constants a, b, c, $\alpha$ , $\beta$ , $\gamma$	146.23Å 146.23Å 60.20Å 90.00° 90.00° 120.00°	Depositor
Resolution (Å)	47.86 – 1.80 47.86 – 1.80	Depositor EDS
% Data completeness (in resolution range)	100.0 (47.86-1.80) 100.0 (47.86-1.80)	Depositor EDS
$R_{merge}$	(Not available)	Depositor
$R_{sym}$	(Not available)	Depositor
$\langle I/\sigma(I) \rangle$ <sup>1</sup>	2.89 (at 1.79Å)	Xtriage
Refinement program	PHENIX 1.19_4092	Depositor
R, $R_{free}$	0.166 , 0.195 0.163 , 0.192	Depositor DCC
$R_{free}$ test set	3321 reflections (4.87%)	wwPDB-VP
Wilson B-factor (Å <sup>2</sup> )	16.2	Xtriage
Anisotropy	0.349	Xtriage
Bulk solvent $k_{sol}$ (e/Å <sup>3</sup> ), $B_{sol}$ (Å <sup>2</sup> )	0.37 , 43.7	EDS
L-test for twinning <sup>2</sup>	$\langle  L  \rangle = 0.51$ , $\langle L^2 \rangle = 0.34$	Xtriage
Estimated twinning fraction	0.023 for h,-h-k,-l	Xtriage
$F_o, F_c$ correlation	0.96	EDS
Total number of atoms	5530	wwPDB-VP
Average B, all atoms (Å <sup>2</sup> )	16.0	wwPDB-VP

Xtriage's analysis on translational NCS is as follows: *The largest off-origin peak in the Patterson function is 3.62% of the height of the origin peak. No significant pseudotranslation is detected.*

<sup>1</sup>Intensities estimated from amplitudes.

<sup>2</sup>Theoretical values of  $\langle |L| \rangle$ ,  $\langle L^2 \rangle$  for acentric reflections are 0.5, 0.333 respectively for untwinned datasets, and 0.375, 0.2 for perfectly twinned datasets.

## 5 Model quality [i](#)

### 5.1 Standard geometry [i](#)

Bond lengths and bond angles in the following residue types are not validated in this section: 1PS, NH2

The Z score for a bond length (or angle) is the number of standard deviations the observed value is removed from the expected value. A bond length (or angle) with  $|Z| > 5$  is considered an outlier worth inspection. RMSZ is the root-mean-square of all Z scores of the bond lengths (or angles).

Mol	Chain	Bond lengths		Bond angles	
		RMSZ	# Z  >5	RMSZ	# Z  >5
1	A	0.35	0/2274	0.64	0/3092
2	B	0.41	0/533	0.55	0/718
2	C	0.43	0/565	0.59	0/761
2	D	0.43	0/547	0.60	0/739
2	E	0.38	0/552	0.56	0/745
2	F	0.37	0/555	0.54	0/748
3	G	0.37	0/48	0.88	0/60
All	All	0.38	0/5074	0.60	0/6863

There are no bond length outliers.

There are no bond angle outliers.

There are no chirality outliers.

There are no planarity outliers.

### 5.2 Too-close contacts [i](#)

In the following table, the Non-H and H(model) columns list the number of non-hydrogen atoms and hydrogen atoms in the chain respectively. The H(added) column lists the number of hydrogen atoms added and optimized by MolProbity. The Clashes column lists the number of clashes within the asymmetric unit, whereas Symm-Clashes lists symmetry-related clashes.

Mol	Chain	Non-H	H(model)	H(added)	Clashes	Symm-Clashes
1	A	2233	0	2187	6	0
2	B	524	0	496	3	0
2	C	555	0	522	2	0
2	D	537	0	499	4	0
2	E	542	0	509	1	0
2	F	545	0	514	2	0

*Continued on next page...*

*Continued from previous page...*

Mol	Chain	Non-H	H(model)	H(added)	Clashes	Symm-Clashes
3	G	50	0	56	3	0
4	B	13	0	11	0	0
4	C	13	0	11	0	0
4	D	13	0	11	0	0
4	F	13	0	11	0	0
5	A	236	0	0	0	0
5	B	42	0	0	1	0
5	C	62	0	0	0	0
5	D	58	0	0	0	0
5	E	41	0	0	0	0
5	F	48	0	0	0	0
5	G	5	0	0	0	0
All	All	5530	0	4827	15	0

The all-atom clashscore is defined as the number of clashes found per 1000 atoms (including hydrogen atoms). The all-atom clashscore for this structure is 2.

All (15) close contacts within the same asymmetric unit are listed below, sorted by their clash magnitude.

Atom-1	Atom-2	Interatomic distance (Å)	Clash overlap (Å)
2:D:5:LYS:HE2	3:G:7:ARG:HH12	1.51	0.73
2:D:5:LYS:HE2	3:G:7:ARG:NH1	2.09	0.67
1:A:78:VAL:HG21	1:A:162:VAL:HG22	1.89	0.54
2:D:17:ASP:HB3	2:D:33:TRP:CH2	2.44	0.53
1:A:113:SER:HA	3:G:9:ARG:HA	1.98	0.45
2:F:36:GLN:HB2	2:F:37:PRO:HD3	1.98	0.44
2:E:29:TRP:O	2:E:61:GLY:HA2	2.19	0.43
2:B:60:SER:HB2	5:B:206:HOH:O	2.20	0.42
2:B:64:GLU:HB2	2:C:15:GLU:HG2	2.02	0.42
2:F:47:MET:HB3	2:F:68:ASN:O	2.20	0.42
1:A:5:ILE:HA	1:A:16:SER:HB3	2.02	0.41
1:A:200:LEU:HD13	2:D:70:ASP:HA	2.02	0.41
1:A:91:ARG:HD2	1:A:95:PHE:O	2.21	0.41
2:B:26:LYS:HE3	2:B:26:LYS:HB2	1.88	0.41
1:A:279:ASN:ND2	2:C:45:THR:OG1	2.54	0.41

There are no symmetry-related clashes.

## 5.3 Torsion angles

### 5.3.1 Protein backbone

In the following table, the Percentiles column shows the percent Ramachandran outliers of the chain as a percentile score with respect to all X-ray entries followed by that with respect to entries of similar resolution.

The Analysed column shows the number of residues for which the backbone conformation was analysed, and the total number of residues.

Mol	Chain	Analysed	Favoured	Allowed	Outliers	Percentiles	
1	A	283/297 (95%)	280 (99%)	3 (1%)	0	100	100
2	B	63/70 (90%)	62 (98%)	1 (2%)	0	100	100
2	C	69/70 (99%)	69 (100%)	0	0	100	100
2	D	68/70 (97%)	68 (100%)	0	0	100	100
2	E	68/70 (97%)	66 (97%)	2 (3%)	0	100	100
2	F	68/70 (97%)	68 (100%)	0	0	100	100
3	G	4/7 (57%)	4 (100%)	0	0	100	100
All	All	623/654 (95%)	617 (99%)	6 (1%)	0	100	100

There are no Ramachandran outliers to report.

### 5.3.2 Protein sidechains

In the following table, the Percentiles column shows the percent sidechain outliers of the chain as a percentile score with respect to all X-ray entries followed by that with respect to entries of similar resolution.

The Analysed column shows the number of residues for which the sidechain conformation was analysed, and the total number of residues.

Mol	Chain	Analysed	Rotameric	Outliers	Percentiles	
1	A	248/261 (95%)	246 (99%)	2 (1%)	81	78
2	B	57/61 (93%)	56 (98%)	1 (2%)	59	48
2	C	62/61 (102%)	59 (95%)	3 (5%)	25	11
2	D	58/61 (95%)	58 (100%)	0	100	100
2	E	59/61 (97%)	58 (98%)	1 (2%)	60	51
2	F	60/61 (98%)	60 (100%)	0	100	100
3	G	4/4 (100%)	4 (100%)	0	100	100

*Continued on next page...*

*Continued from previous page...*

Mol	Chain	Analysed	Rotameric	Outliers	Percentiles	
All	All	548/570 (96%)	541 (99%)	7 (1%)	78	62

All (7) residues with a non-rotameric sidechain are listed below:

Mol	Chain	Res	Type
1	A	37[A]	SER
1	A	37[B]	SER
2	B	34	ASN
2	C	32	ARG
2	C	41[A]	SER
2	C	41[B]	SER
2	E	60	SER

Sometimes sidechains can be flipped to improve hydrogen bonding and reduce clashes. All (1) such sidechains are listed below:

Mol	Chain	Res	Type
1	A	279	ASN

### 5.3.3 RNA ⓘ

There are no RNA molecules in this entry.

## 5.4 Non-standard residues in protein, DNA, RNA chains ⓘ

There are no non-standard protein/DNA/RNA residues in this entry.

## 5.5 Carbohydrates ⓘ

There are no monosaccharides in this entry.

## 5.6 Ligand geometry ⓘ

4 ligands are modelled in this entry.

There are no bond length outliers.

There are no bond angle outliers.

There are no chirality outliers.

There are no torsion outliers.

There are no ring outliers.

No monomer is involved in short contacts.

## 5.7 Other polymers [i](#)

There are no such residues in this entry.

## 5.8 Polymer linkage issues [i](#)

There are no chain breaks in this entry.

## 6 Fit of model and data [i](#)

### 6.1 Protein, DNA and RNA chains [i](#)

In the following table, the column labelled ‘#RSRZ> 2’ contains the number (and percentage) of RSRZ outliers, followed by percent RSRZ outliers for the chain as percentile scores relative to all X-ray entries and entries of similar resolution. The OWAB column contains the minimum, median, 95<sup>th</sup> percentile and maximum values of the occupancy-weighted average B-factor per residue. The column labelled ‘Q< 0.9’ lists the number of (and percentage) of residues with an average occupancy less than 0.9.

Mol	Chain	Analysed	<RSRZ>	#RSRZ>2	OWAB(Å <sup>2</sup> )	Q<0.9
1	A	284/297 (95%)	-0.24	3 (1%) 80 78	10, 15, 25, 47	0
2	B	67/70 (95%)	-0.14	2 (2%) 50 44	10, 16, 29, 41	0
2	C	70/70 (100%)	-0.45	0 100 100	9, 13, 18, 30	0
2	D	70/70 (100%)	-0.28	1 (1%) 75 72	9, 13, 25, 36	0
2	E	70/70 (100%)	-0.07	2 (2%) 51 46	9, 18, 37, 48	0
2	F	70/70 (100%)	-0.20	0 100 100	10, 15, 27, 35	0
3	G	5/7 (71%)	0.48	1 (20%) 1 0	13, 16, 31, 44	0
All	All	636/654 (97%)	-0.23	9 (1%) 75 72	9, 15, 28, 48	0

All (9) RSRZ outliers are listed below:

Mol	Chain	Res	Type	RSRZ
2	E	59	GLY	4.0
1	A	185	THR	3.3
1	A	186	ALA	3.1
2	E	58	SER	2.7
1	A	242	HIS	2.6
3	G	6	ARG	2.4
2	D	70	ASP	2.2
2	B	60	SER	2.2
2	B	61	GLY	2.1

### 6.2 Non-standard residues in protein, DNA, RNA chains [i](#)

There are no non-standard protein/DNA/RNA residues in this entry.

### 6.3 Carbohydrates [i](#)

There are no monosaccharides in this entry.

### 6.4 Ligands [i](#)

In the following table, the Atoms column lists the number of modelled atoms in the group and the number defined in the chemical component dictionary. The B-factors column lists the minimum, median, 95<sup>th</sup> percentile and maximum values of B factors of atoms in the group. The column labelled 'Q< 0.9' lists the number of atoms with occupancy less than 0.9.

Mol	Type	Chain	Res	Atoms	RSCC	RSR	B-factors( $\text{\AA}^2$ )	Q<0.9
4	1PS	B	101	13/13	0.86	0.31	25,33,42,48	0
4	1PS	F	101	13/13	0.89	0.24	28,32,42,50	0
4	1PS	D	101	13/13	0.97	0.10	14,16,18,18	0
4	1PS	C	101	13/13	0.97	0.07	13,15,18,20	0

### 6.5 Other polymers [i](#)

There are no such residues in this entry.