



Full wwPDB X-ray Structure Validation Report ⓘ

May 25, 2020 – 02:15 pm BST

PDB ID : 5VJ7
Title : Ferredoxin NADP Oxidoreductase (Xfn)
Authors : Zadvornyy, O.A.; Nguyen, D.M.N.; Schut, G.J.; Lipscomb, G.L.; Tokmina-Lukaszewska, M.; Adams, M.W.W.; Peters, J.W.
Deposited on : 2017-04-18
Resolution : 2.55 Å(reported)

This is a Full wwPDB X-ray Structure Validation Report for a publicly released PDB entry.

We welcome your comments at validation@mail.wwpdb.org

A user guide is available at

<https://www.wwpdb.org/validation/2017/XrayValidationReportHelp>

with specific help available everywhere you see the ⓘ symbol.

The following versions of software and data (see [references ⓘ](#)) were used in the production of this report:

MolProbity : 4.02b-467
Mogul : 1.8.5 (274361), CSD as541be (2020)
Xtriage (Phenix) : 1.13
EDS : 2.11
buster-report : 1.1.7 (2018)
Percentile statistics : 20191225.v01 (using entries in the PDB archive December 25th 2019)
Refmac : 5.8.0158
CCP4 : 7.0.044 (Gargrove)
Ideal geometry (proteins) : Engh & Huber (2001)
Ideal geometry (DNA, RNA) : Parkinson et al. (1996)
Validation Pipeline (wwPDB-VP) : 2.11

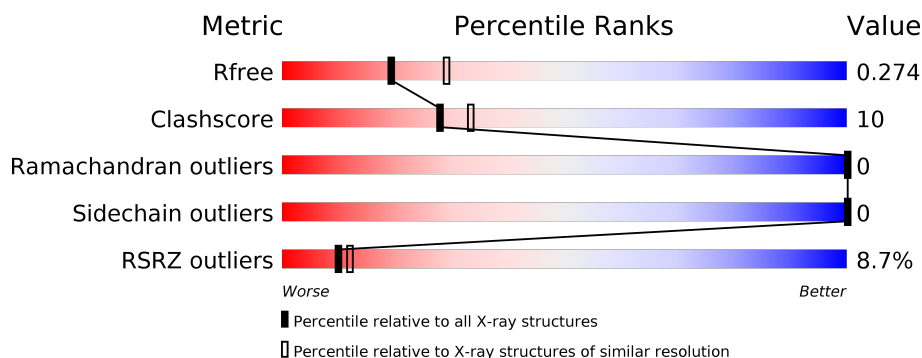
1 Overall quality at a glance

The following experimental techniques were used to determine the structure:

X-RAY DIFFRACTION

The reported resolution of this entry is 2.55 Å.

Percentile scores (ranging between 0-100) for global validation metrics of the entry are shown in the following graphic. The table shows the number of entries on which the scores are based.



Metric	Whole archive (#Entries)	Similar resolution (#Entries, resolution range(Å))
R_{free}	130704	1284 (2.56-2.52)
Clashscore	141614	1332 (2.56-2.52)
Ramachandran outliers	138981	1315 (2.56-2.52)
Sidechain outliers	138945	1315 (2.56-2.52)
RSRZ outliers	127900	1272 (2.56-2.52)

The table below summarises the geometric issues observed across the polymeric chains and their fit to the electron density. The red, orange, yellow and green segments on the lower bar indicate the fraction of residues that contain outliers for ≥ 3 , 2, 1 and 0 types of geometric quality criteria respectively. A grey segment represents the fraction of residues that are not modelled. The numeric value for each fraction is indicated below the corresponding segment, with a dot representing fractions $\leq 5\%$. The upper red bar (where present) indicates the fraction of residues that have poor fit to the electron density. The numeric value is given above the bar.

Mol	Chain	Length	Quality of chain
1	A	476	<div> <div>7%</div> <div>85%</div> <div>12%</div> <div>•</div> </div>
2	B	289	<div> <div>11%</div> <div>81%</div> <div>17%</div> <div>•</div> </div>

2 Entry composition [i](#)

There are 7 unique types of molecules in this entry. The entry contains 6196 atoms, of which 62 are hydrogens and 0 are deuteriums.

In the tables below, the ZeroOcc column contains the number of atoms modelled with zero occupancy, the AltConf column contains the number of residues with at least one atom in alternate conformation and the Trace column contains the number of residues modelled with at most 2 atoms.

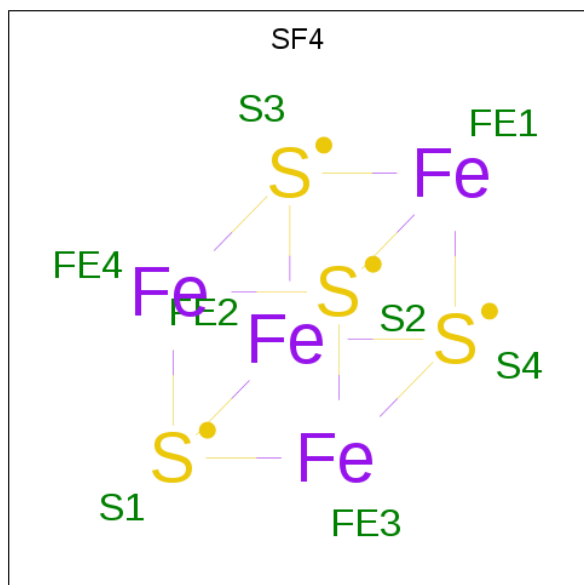
- Molecule 1 is a protein called Oxidoreductase.

Mol	Chain	Residues	Atoms					ZeroOcc	AltConf	Trace
			Total	C	N	O	S			
1	A	462	3572	2272	626	658	16	0	0	0

- Molecule 2 is a protein called Ferredoxin-NADP(+) reductase subunit alpha.

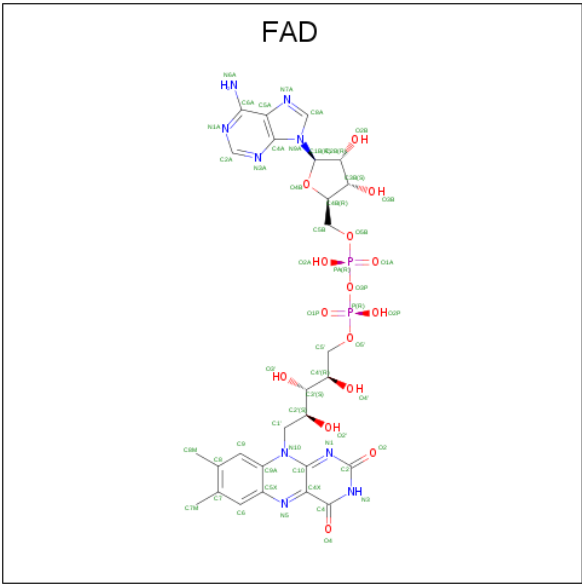
Mol	Chain	Residues	Atoms					ZeroOcc	AltConf	Trace
			Total	C	N	O	S			
2	B	282	2250	1460	370	405	15	0	0	0

- Molecule 3 is IRON/SULFUR CLUSTER (three-letter code: SF4) (formula: Fe₄S₄).



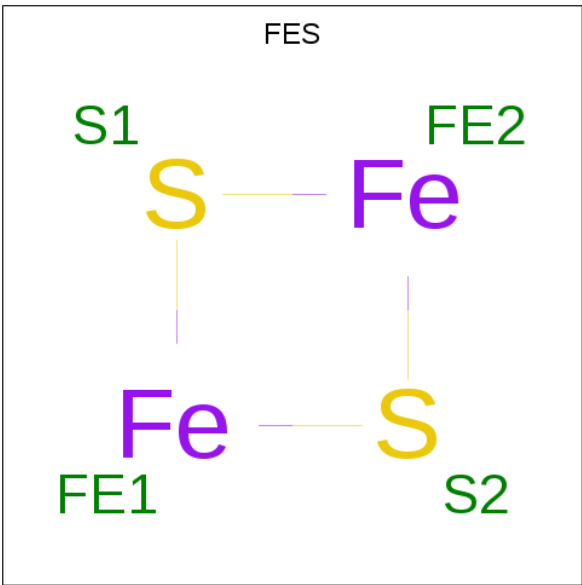
Mol	Chain	Residues	Atoms			ZeroOcc	AltConf
			Total	Fe	S		
3	A	1	8	4	4	0	0
3	A	1	8	4	4	0	0

- Molecule 4 is FLAVIN-ADENINE DINUCLEOTIDE (three-letter code: FAD) (formula: $C_{27}H_{33}N_9O_{15}P_2$).



Mol	Chain	Residues	Atoms						ZeroOcc	AltConf
4	A	1	Total	C	H	N	O	P	0	0
			84	27	31	9	15	2		
4	B	1	Total	C	H	N	O	P	0	0
			84	27	31	9	15	2		

- Molecule 5 is FE2/S2 (INORGANIC) CLUSTER (three-letter code: FES) (formula: Fe_2S_2).



Mol	Chain	Residues	Atoms			ZeroOcc	AltConf
5	B	1	Total	Fe	S	0	0
			4	2	2		

- Molecule 6 is MAGNESIUM ION (three-letter code: MG) (formula: Mg).

Mol	Chain	Residues	Atoms		ZeroOcc	AltConf
6	B	1	Total	Mg	0	0
			1	1		

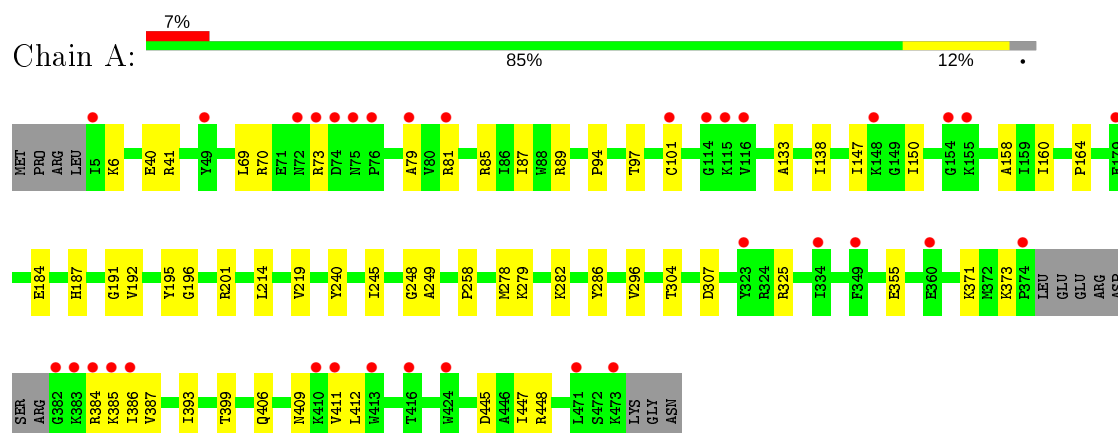
- Molecule 7 is water.

Mol	Chain	Residues	Atoms		ZeroOcc	AltConf
7	A	104	Total	O	0	0
			104	104		
7	B	81	Total	O	0	0
			81	81		

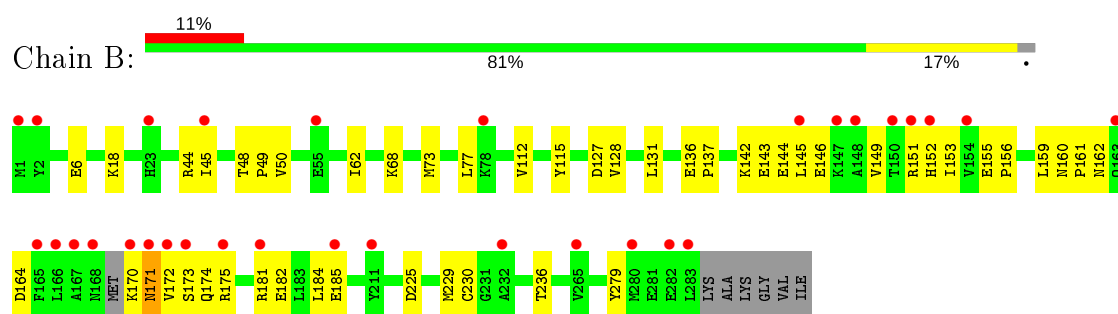
3 Residue-property plots [i](#)

These plots are drawn for all protein, RNA and DNA chains in the entry. The first graphic for a chain summarises the proportions of the various outlier classes displayed in the second graphic. The second graphic shows the sequence view annotated by issues in geometry and electron density. Residues are color-coded according to the number of geometric quality criteria for which they contain at least one outlier: green = 0, yellow = 1, orange = 2 and red = 3 or more. A red dot above a residue indicates a poor fit to the electron density ($RSRZ > 2$). Stretches of 2 or more consecutive residues without any outlier are shown as a green connector. Residues present in the sample, but not in the model, are shown in grey.

• Molecule 1: Oxidoreductase



• Molecule 2: Ferredoxin-NADP(+) reductase subunit alpha



4 Data and refinement statistics

Property	Value	Source
Space group	P 1 21 1	Depositor
Cell constants a, b, c, α , β , γ	55.74Å 73.14Å 99.96Å 90.00° 96.73° 90.00°	Depositor
Resolution (Å)	39.00 – 2.55 39.00 – 2.55	Depositor EDS
% Data completeness (in resolution range)	98.6 (39.00-2.55) 98.6 (39.00-2.55)	Depositor EDS
R_{merge}	0.10	Depositor
R_{sym}	(Not available)	Depositor
$\langle I/\sigma(I) \rangle$ ¹	2.20 (at 2.54Å)	Xtriage
Refinement program	BUSTER 2.10.3	Depositor
R, R_{free}	0.183 , 0.251 0.209 , 0.274	Depositor DCC
R_{free} test set	1226 reflections (4.74%)	wwPDB-VP
Wilson B-factor (Å ²)	35.3	Xtriage
Anisotropy	1.100	Xtriage
Bulk solvent k_{sol} (e/Å ³), B_{sol} (Å ²)	0.37 , 78.6	EDS
L-test for twinning ²	$\langle L \rangle = 0.45$, $\langle L^2 \rangle = 0.28$	Xtriage
Estimated twinning fraction	No twinning to report.	Xtriage
F_o, F_c correlation	0.93	EDS
Total number of atoms	6196	wwPDB-VP
Average B, all atoms (Å ²)	43.0	wwPDB-VP

Xtriage's analysis on translational NCS is as follows: *The largest off-origin peak in the Patterson function is 4.69% of the height of the origin peak. No significant pseudotranslation is detected.*

¹Intensities estimated from amplitudes.

²Theoretical values of $\langle |L| \rangle$, $\langle L^2 \rangle$ for acentric reflections are 0.5, 0.333 respectively for untwinned datasets, and 0.375, 0.2 for perfectly twinned datasets.

5 Model quality [i](#)

5.1 Standard geometry [i](#)

Bond lengths and bond angles in the following residue types are not validated in this section: MG, SF4, FAD, FES

The Z score for a bond length (or angle) is the number of standard deviations the observed value is removed from the expected value. A bond length (or angle) with $|Z| > 5$ is considered an outlier worth inspection. RMSZ is the root-mean-square of all Z scores of the bond lengths (or angles).

Mol	Chain	Bond lengths		Bond angles	
		RMSZ	$\# Z > 5$	RMSZ	$\# Z > 5$
1	A	0.50	0/3634	0.69	0/4909
2	B	0.52	0/2302	0.79	3/3119 (0.1%)
All	All	0.51	0/5936	0.73	3/8028 (0.0%)

There are no bond length outliers.

All (3) bond angle outliers are listed below:

Mol	Chain	Res	Type	Atoms	Z	Observed(°)	Ideal(°)
2	B	152	HIS	CB-CA-C	8.03	126.46	110.40
2	B	171	ASN	N-CA-C	-5.33	96.60	111.00
2	B	182	GLU	C-N-CA	5.30	134.94	121.70

There are no chirality outliers.

There are no planarity outliers.

5.2 Too-close contacts [i](#)

In the following table, the Non-H and H(model) columns list the number of non-hydrogen atoms and hydrogen atoms in the chain respectively. The H(added) column lists the number of hydrogen atoms added and optimized by MolProbity. The Clashes column lists the number of clashes within the asymmetric unit, whereas Symm-Clashes lists symmetry related clashes.

Mol	Chain	Non-H	H(model)	H(added)	Clashes	Symm-Clashes
1	A	3572	0	3662	56	0
2	B	2250	0	2286	66	0
3	A	16	0	0	0	0
4	A	53	31	31	11	0
4	B	53	31	31	3	0
5	B	4	0	0	1	0

Continued on next page...

Continued from previous page...

Mol	Chain	Non-H	H(model)	H(added)	Clashes	Symm-Clashes
6	B	1	0	0	0	0
7	A	104	0	0	0	0
7	B	81	0	0	7	0
All	All	6134	62	6010	118	0

The all-atom clashscore is defined as the number of clashes found per 1000 atoms (including hydrogen atoms). The all-atom clashscore for this structure is 10.

All (118) close contacts within the same asymmetric unit are listed below, sorted by their clash magnitude.

Atom-1	Atom-2	Interatomic distance (Å)	Clash overlap (Å)
2:B:225:ASP:OD1	2:B:230:CYS:SG	1.92	1.26
2:B:160:ASN:OD1	2:B:161:PRO:HD3	1.26	1.25
2:B:142:LYS:O	2:B:146:GLU:HG3	1.36	1.21
1:A:184:GLU:OE1	4:A:503:FAD:O2B	1.64	1.12
1:A:386:ILE:HG22	1:A:387:VAL:H	1.14	1.12
1:A:386:ILE:HG22	1:A:387:VAL:N	1.70	1.02
2:B:115:TYR:HD1	2:B:145:LEU:HD23	1.25	1.00
2:B:145:LEU:HD13	2:B:151:ARG:HH12	1.24	1.00
1:A:191:GLY:HA2	4:A:503:FAD:O3B	1.62	0.99
1:A:386:ILE:CG2	1:A:387:VAL:H	1.74	0.99
2:B:160:ASN:OD1	2:B:161:PRO:CD	2.12	0.98
2:B:170:LYS:HE3	7:B:451:HOH:O	1.63	0.97
2:B:115:TYR:HD1	2:B:145:LEU:CD2	1.78	0.96
1:A:164:PRO:HD2	4:A:503:FAD:O1P	1.69	0.93
1:A:373:LYS:O	1:A:386:ILE:HG23	1.69	0.91
2:B:127:ASP:OD1	2:B:149:VAL:HG21	1.73	0.88
2:B:172:VAL:CG1	2:B:175:ARG:HG2	2.06	0.85
2:B:115:TYR:CD1	2:B:145:LEU:HD23	2.11	0.84
2:B:230:CYS:SG	5:B:302:FES:FE2	1.69	0.84
2:B:151:ARG:NH2	7:B:401:HOH:O	1.92	0.84
2:B:170:LYS:CE	7:B:451:HOH:O	2.19	0.83
2:B:142:LYS:HG3	2:B:153:ILE:HD11	1.62	0.81
1:A:296:VAL:HG22	1:A:399:THR:HB	1.64	0.79
1:A:6:LYS:HE2	1:A:41:ARG:HG2	1.64	0.78
2:B:145:LEU:CD1	2:B:151:ARG:HH12	1.97	0.78
2:B:172:VAL:HA	2:B:174:GLN:HG2	1.67	0.76
2:B:170:LYS:HG3	7:B:451:HOH:O	1.85	0.75
2:B:145:LEU:HD13	2:B:151:ARG:NH1	2.00	0.74
1:A:97:THR:HB	1:A:101:CYS:SG	2.29	0.73
1:A:412:LEU:HD11	4:A:503:FAD:H61A	1.54	0.72

Continued on next page...

Continued from previous page...

Atom-1	Atom-2	Interatomic distance (Å)	Clash overlap (Å)
1:A:6:LYS:HE2	1:A:41:ARG:CG	2.19	0.71
2:B:145:LEU:CD1	2:B:151:ARG:NH1	2.51	0.71
2:B:172:VAL:HG13	2:B:175:ARG:HG2	1.71	0.71
2:B:172:VAL:CG1	2:B:175:ARG:CG	2.69	0.70
2:B:172:VAL:HG12	2:B:175:ARG:HG2	1.71	0.70
1:A:373:LYS:O	1:A:386:ILE:CG2	2.40	0.69
2:B:142:LYS:O	2:B:146:GLU:CG	2.29	0.68
2:B:115:TYR:CD1	2:B:145:LEU:CD2	2.70	0.68
4:B:301:FAD:HM81	4:B:301:FAD:H2A	1.76	0.67
2:B:172:VAL:HG12	2:B:175:ARG:CG	2.26	0.66
1:A:97:THR:O	1:A:101:CYS:SG	2.55	0.64
2:B:170:LYS:CG	7:B:451:HOH:O	2.40	0.64
1:A:445:ASP:OD1	4:A:503:FAD:H5'1	1.98	0.64
1:A:304:THR:HA	4:A:503:FAD:HM73	1.80	0.62
1:A:81:ARG:NH1	1:A:85:ARG:HH12	1.97	0.62
2:B:159:LEU:HG	2:B:161:PRO:HD2	1.82	0.62
2:B:155:GLU:O	2:B:155:GLU:HG2	2.00	0.62
2:B:142:LYS:HG2	2:B:146:GLU:OE2	2.00	0.60
1:A:192:VAL:HG11	4:A:503:FAD:C9	2.31	0.60
2:B:142:LYS:HG3	2:B:153:ILE:CD1	2.31	0.58
1:A:409:ASN:HB3	1:A:412:LEU:HB2	1.85	0.58
1:A:81:ARG:NH1	1:A:85:ARG:NH1	2.52	0.58
4:B:301:FAD:O3B	7:B:402:HOH:O	2.17	0.58
1:A:386:ILE:CG2	1:A:387:VAL:N	2.38	0.57
2:B:145:LEU:CB	2:B:151:ARG:NH1	2.68	0.57
2:B:127:ASP:OD1	2:B:149:VAL:CG2	2.49	0.57
2:B:159:LEU:HB3	2:B:162:ASN:HB2	1.88	0.56
1:A:249:ALA:O	1:A:406:GLN:HB3	2.06	0.56
1:A:214:LEU:HB3	1:A:219:VAL:HG22	1.89	0.55
1:A:325:ARG:HG2	1:A:386:ILE:HD12	1.87	0.55
2:B:156:PRO:HG2	2:B:173:SER:HB2	1.87	0.55
1:A:195:TYR:CZ	2:B:229:MET:HE3	2.42	0.55
2:B:115:TYR:HD1	2:B:145:LEU:HD21	1.71	0.54
2:B:170:LYS:C	2:B:172:VAL:N	2.61	0.54
1:A:147:ILE:HA	1:A:150:ILE:HD12	1.89	0.54
1:A:195:TYR:CE2	2:B:229:MET:HE3	2.43	0.53
1:A:258:PRO:HB2	1:A:355:GLU:HG3	1.90	0.53
2:B:128:VAL:O	2:B:149:VAL:HB	2.08	0.53
2:B:136:GLU:HG2	2:B:137:PRO:HD3	1.91	0.52
1:A:6:LYS:HG3	1:A:6:LYS:O	2.09	0.52
2:B:143:GLU:O	2:B:146:GLU:HB2	2.10	0.51

Continued on next page...

Continued from previous page...

Atom-1	Atom-2	Interatomic distance (Å)	Clash overlap (Å)
1:A:40:GLU:HA	1:A:70:ARG:HD2	1.91	0.51
1:A:248:GLY:HA2	1:A:445:ASP:HB2	1.93	0.50
2:B:164:ASP:O	2:B:171:ASN:HB2	2.11	0.50
2:B:145:LEU:HB3	2:B:151:ARG:NH1	2.26	0.49
1:A:411:VAL:O	1:A:411:VAL:HG12	2.12	0.49
2:B:73:MET:O	2:B:77:LEU:HB2	2.11	0.49
1:A:195:TYR:CE2	2:B:229:MET:CE	2.96	0.48
2:B:131:LEU:CD2	2:B:181:ARG:HH12	2.27	0.48
1:A:325:ARG:HH22	1:A:385:LYS:HD3	1.78	0.48
2:B:236:THR:HG22	7:B:426:HOH:O	2.14	0.48
1:A:384:ARG:O	1:A:385:LYS:HB2	2.12	0.48
2:B:144:GLU:C	2:B:146:GLU:H	2.17	0.48
1:A:85:ARG:O	1:A:89:ARG:HG3	2.13	0.48
2:B:115:TYR:HB2	2:B:145:LEU:HD21	1.95	0.47
1:A:187:HIS:HE1	1:A:278:MET:CE	2.28	0.47
1:A:69:LEU:HA	1:A:79:ALA:HB1	1.96	0.47
1:A:184:GLU:OE2	4:A:503:FAD:H1B	2.15	0.46
1:A:160:ILE:HD12	1:A:245:ILE:HG12	1.97	0.45
1:A:195:TYR:CZ	2:B:229:MET:CE	3.00	0.45
1:A:278:MET:HE1	2:B:44:ARG:HD3	1.98	0.44
1:A:279:LYS:HD2	1:A:286:TYR:CZ	2.51	0.44
2:B:184:LEU:O	2:B:185:GLU:HB3	2.16	0.44
2:B:115:TYR:CD1	2:B:145:LEU:HD21	2.49	0.44
1:A:201:ARG:HD3	1:A:307:ASP:OD1	2.19	0.43
1:A:191:GLY:CA	4:A:503:FAD:O3B	2.50	0.43
2:B:127:ASP:OD1	2:B:149:VAL:HG11	2.17	0.43
2:B:172:VAL:HG12	2:B:175:ARG:HG3	2.01	0.43
1:A:279:LYS:HB3	1:A:282:LYS:HD2	2.01	0.43
1:A:371:LYS:HE3	1:A:393:ILE:HB	2.00	0.42
1:A:192:VAL:HG13	1:A:196:GLY:HA3	2.02	0.42
1:A:192:VAL:HG11	4:A:503:FAD:C8	2.49	0.42
2:B:45:ILE:HB	4:B:301:FAD:O4'	2.19	0.42
2:B:145:LEU:HB3	2:B:151:ARG:HH11	1.84	0.42
2:B:185:GLU:O	2:B:185:GLU:HG2	2.20	0.41
2:B:68:LYS:HD3	2:B:279:TYR:HB2	2.02	0.41
1:A:133:ALA:HA	1:A:138:ILE:HB	2.03	0.41
1:A:158:ALA:HB2	1:A:240:TYR:CD1	2.56	0.41
1:A:447:ILE:HG13	1:A:448:ARG:HG3	2.02	0.41
1:A:445:ASP:CG	4:A:503:FAD:H5'1	2.42	0.40
1:A:73:ARG:HG2	1:A:73:ARG:H	1.76	0.40
2:B:144:GLU:C	2:B:146:GLU:N	2.75	0.40

Continued on next page...

Continued from previous page...

Atom-1	Atom-2	Interatomic distance (Å)	Clash overlap (Å)
1:A:278:MET:HE1	2:B:44:ARG:CD	2.51	0.40
2:B:62:ILE:HB	2:B:112:VAL:HG11	2.03	0.40
2:B:48:THR:HA	2:B:49:PRO:HD3	2.01	0.40
1:A:87:ILE:HG21	1:A:94:PRO:HB3	2.04	0.40
2:B:50:VAL:HG21	2:B:112:VAL:HG13	2.02	0.40
2:B:6:GLU:HB2	2:B:18:LYS:HB3	2.04	0.40

There are no symmetry-related clashes.

5.3 Torsion angles [i](#)

5.3.1 Protein backbone [i](#)

In the following table, the Percentiles column shows the percent Ramachandran outliers of the chain as a percentile score with respect to all X-ray entries followed by that with respect to entries of similar resolution.

The Analysed column shows the number of residues for which the backbone conformation was analysed, and the total number of residues.

Mol	Chain	Analysed	Favoured	Allowed	Outliers	Percentiles	
1	A	458/476 (96%)	434 (95%)	24 (5%)	0	100	100
2	B	278/289 (96%)	257 (92%)	21 (8%)	0	100	100
All	All	736/765 (96%)	691 (94%)	45 (6%)	0	100	100

There are no Ramachandran outliers to report.

5.3.2 Protein sidechains [i](#)

In the following table, the Percentiles column shows the percent sidechain outliers of the chain as a percentile score with respect to all X-ray entries followed by that with respect to entries of similar resolution.

The Analysed column shows the number of residues for which the sidechain conformation was analysed, and the total number of residues.

Mol	Chain	Analysed	Rotameric	Outliers	Percentiles	
1	A	375/388 (97%)	375 (100%)	0	100	100
2	B	244/249 (98%)	244 (100%)	0	100	100

Continued on next page...

Continued from previous page...

Mol	Chain	Analysed	Rotameric	Outliers	Percentiles	
All	All	619/637 (97%)	619 (100%)	0	100	100

There are no protein residues with a non-rotameric sidechain to report.

Some sidechains can be flipped to improve hydrogen bonding and reduce clashes. There are no such sidechains identified.

5.3.3 RNA ⓘ

There are no RNA molecules in this entry.

5.4 Non-standard residues in protein, DNA, RNA chains ⓘ

There are no non-standard protein/DNA/RNA residues in this entry.

5.5 Carbohydrates ⓘ

There are no carbohydrates in this entry.

5.6 Ligand geometry ⓘ

Of 6 ligands modelled in this entry, 1 is monoatomic - leaving 5 for Mogul analysis.

In the following table, the Counts columns list the number of bonds (or angles) for which Mogul statistics could be retrieved, the number of bonds (or angles) that are observed in the model and the number of bonds (or angles) that are defined in the Chemical Component Dictionary. The Link column lists molecule types, if any, to which the group is linked. The Z score for a bond length (or angle) is the number of standard deviations the observed value is removed from the expected value. A bond length (or angle) with $|Z| > 2$ is considered an outlier worth inspection. RMSZ is the root-mean-square of all Z scores of the bond lengths (or angles).

Mol	Type	Chain	Res	Link	Bond lengths			Bond angles		
					Counts	RMSZ	# Z > 2	Counts	RMSZ	# Z > 2
4	FAD	B	301	6	51,58,58	1.86	6 (11%)	60,89,89	1.95	13 (21%)
4	FAD	A	503	-	51,58,58	1.86	6 (11%)	60,89,89	1.96	14 (23%)
5	FES	B	302	2	0,4,4	0.00	-	-		
3	SF4	A	501	1	0,12,12	0.00	-	-		
3	SF4	A	502	1	0,12,12	0.00	-	-		

In the following table, the Chirals column lists the number of chiral outliers, the number of chiral

centers analysed, the number of these observed in the model and the number defined in the Chemical Component Dictionary. Similar counts are reported in the Torsion and Rings columns. '-' means no outliers of that kind were identified.

Mol	Type	Chain	Res	Link	Chirals	Torsions	Rings
4	FAD	B	301	6	-	5/30/50/50	0/6/6/6
4	FAD	A	503	-	-	11/30/50/50	0/6/6/6
5	FES	B	302	2	-	-	0/1/1/1
3	SF4	A	501	1	-	-	0/6/5/5
3	SF4	A	502	1	-	-	0/6/5/5

All (12) bond length outliers are listed below:

Mol	Chain	Res	Type	Atoms	Z	Observed(Å)	Ideal(Å)
4	A	503	FAD	C4X-C10	9.67	1.48	1.38
4	B	301	FAD	C4X-C10	9.59	1.48	1.38
4	B	301	FAD	C4-C4X	4.33	1.48	1.41
4	A	503	FAD	C4-C4X	4.30	1.48	1.41
4	B	301	FAD	C9A-C5X	3.55	1.49	1.42
4	A	503	FAD	C9A-C5X	3.51	1.49	1.42
4	A	503	FAD	C8-C7	3.34	1.49	1.40
4	B	301	FAD	C8-C7	3.30	1.49	1.40
4	A	503	FAD	C5A-C4A	2.43	1.47	1.40
4	B	301	FAD	C5A-C4A	2.40	1.47	1.40
4	A	503	FAD	C9A-N10	2.11	1.41	1.38
4	B	301	FAD	C9A-N10	2.08	1.41	1.38

All (27) bond angle outliers are listed below:

Mol	Chain	Res	Type	Atoms	Z	Observed(°)	Ideal(°)
4	A	503	FAD	C4-N3-C2	7.99	121.89	115.14
4	B	301	FAD	C4-N3-C2	7.99	121.89	115.14
4	B	301	FAD	C4-C4X-C10	-5.09	116.58	119.95
4	A	503	FAD	C4-C4X-C10	-5.06	116.60	119.95
4	A	503	FAD	C4X-N5-C5X	3.99	120.76	116.77
4	B	301	FAD	C4X-N5-C5X	3.95	120.72	116.77
4	B	301	FAD	N3A-C2A-N1A	-3.67	122.94	128.68
4	A	503	FAD	N3A-C2A-N1A	-3.67	122.94	128.68
4	A	503	FAD	P-O3P-PA	-3.60	120.46	132.83
4	B	301	FAD	P-O3P-PA	-3.58	120.55	132.83
4	B	301	FAD	C3B-C2B-C1B	3.54	106.31	100.98
4	A	503	FAD	C3B-C2B-C1B	3.51	106.26	100.98
4	A	503	FAD	C4X-C4-N3	-3.49	118.66	123.43
4	B	301	FAD	C4X-C4-N3	-3.47	118.68	123.43

Continued on next page...

Continued from previous page...

Mol	Chain	Res	Type	Atoms	Z	Observed(°)	Ideal(°)
4	A	503	FAD	C1'-N10-C9A	3.24	120.84	118.29
4	B	301	FAD	C1'-N10-C9A	3.16	120.78	118.29
4	A	503	FAD	C4-C4X-N5	3.07	122.11	118.60
4	B	301	FAD	C4-C4X-N5	3.06	122.10	118.60
4	A	503	FAD	C4A-C5A-N7A	-2.74	106.55	109.40
4	B	301	FAD	C4A-C5A-N7A	-2.72	106.56	109.40
4	A	503	FAD	C9A-N10-C10	-2.71	118.36	121.91
4	B	301	FAD	C1'-N10-C10	2.71	120.83	118.41
4	B	301	FAD	C9A-N10-C10	-2.69	118.39	121.91
4	A	503	FAD	C1'-N10-C10	2.67	120.80	118.41
4	A	503	FAD	C5X-C9A-N10	2.56	119.57	117.72
4	B	301	FAD	C5X-C9A-N10	2.52	119.54	117.72
4	A	503	FAD	C2A-N1A-C6A	2.00	122.18	118.75

There are no chirality outliers.

All (16) torsion outliers are listed below:

Mol	Chain	Res	Type	Atoms
4	B	301	FAD	C5B-O5B-PA-O3P
4	B	301	FAD	C5'-O5'-P-O1P
4	B	301	FAD	C5'-O5'-P-O2P
4	B	301	FAD	C5'-O5'-P-O3P
4	A	503	FAD	C5B-O5B-PA-O2A
4	A	503	FAD	C5'-O5'-P-O3P
4	A	503	FAD	O4B-C4B-C5B-O5B
4	A	503	FAD	C3B-C4B-C5B-O5B
4	A	503	FAD	C5B-O5B-PA-O3P
4	A	503	FAD	C5B-O5B-PA-O1A
4	A	503	FAD	C3'-C4'-C5'-O5'
4	A	503	FAD	C5'-O5'-P-O1P
4	A	503	FAD	P-O3P-PA-O1A
4	A	503	FAD	C2'-C3'-C4'-O4'
4	A	503	FAD	P-O3P-PA-O2A
4	B	301	FAD	C5B-O5B-PA-O1A

There are no ring outliers.

3 monomers are involved in 15 short contacts:

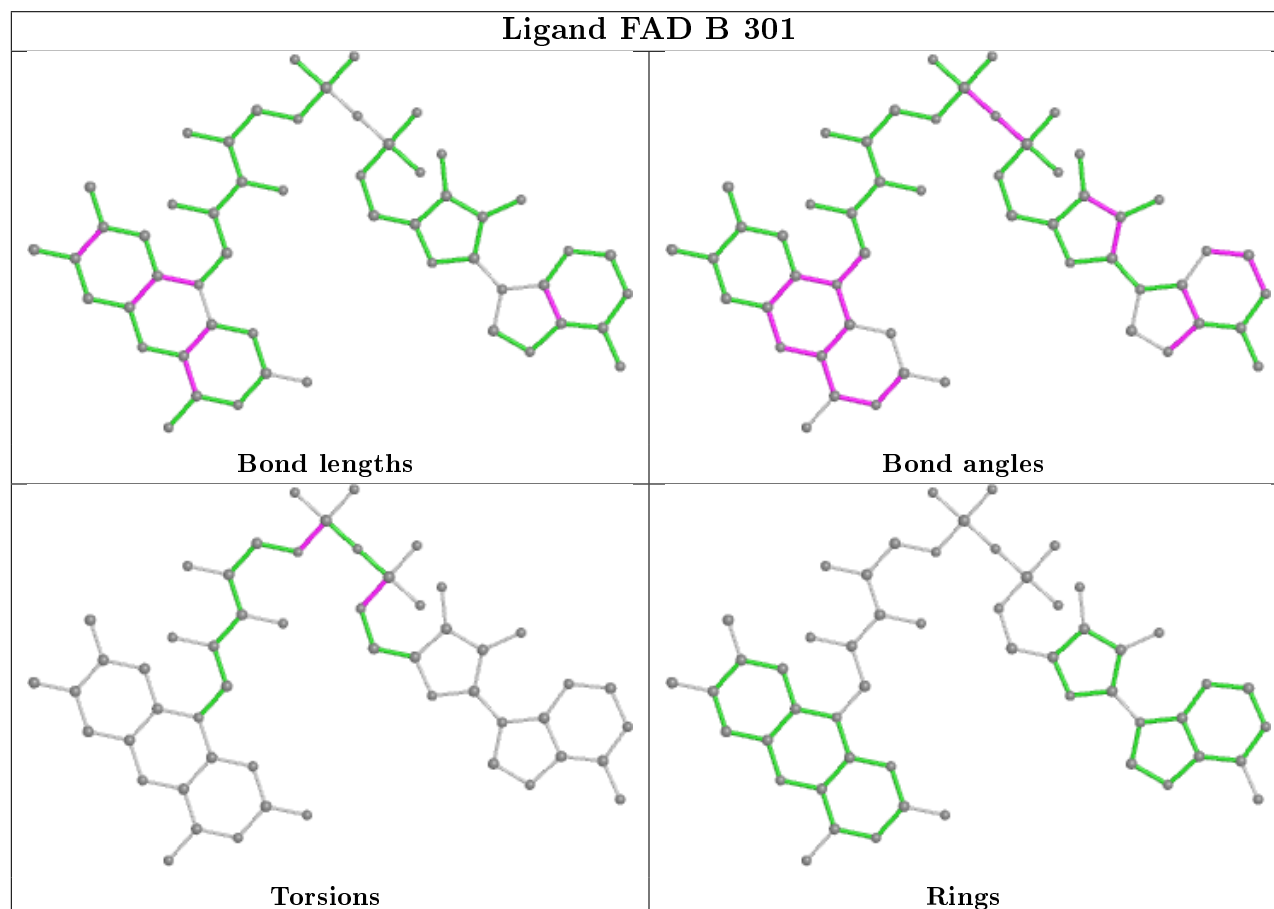
Mol	Chain	Res	Type	Clashes	Symm-Clashes
4	B	301	FAD	3	0
4	A	503	FAD	11	0

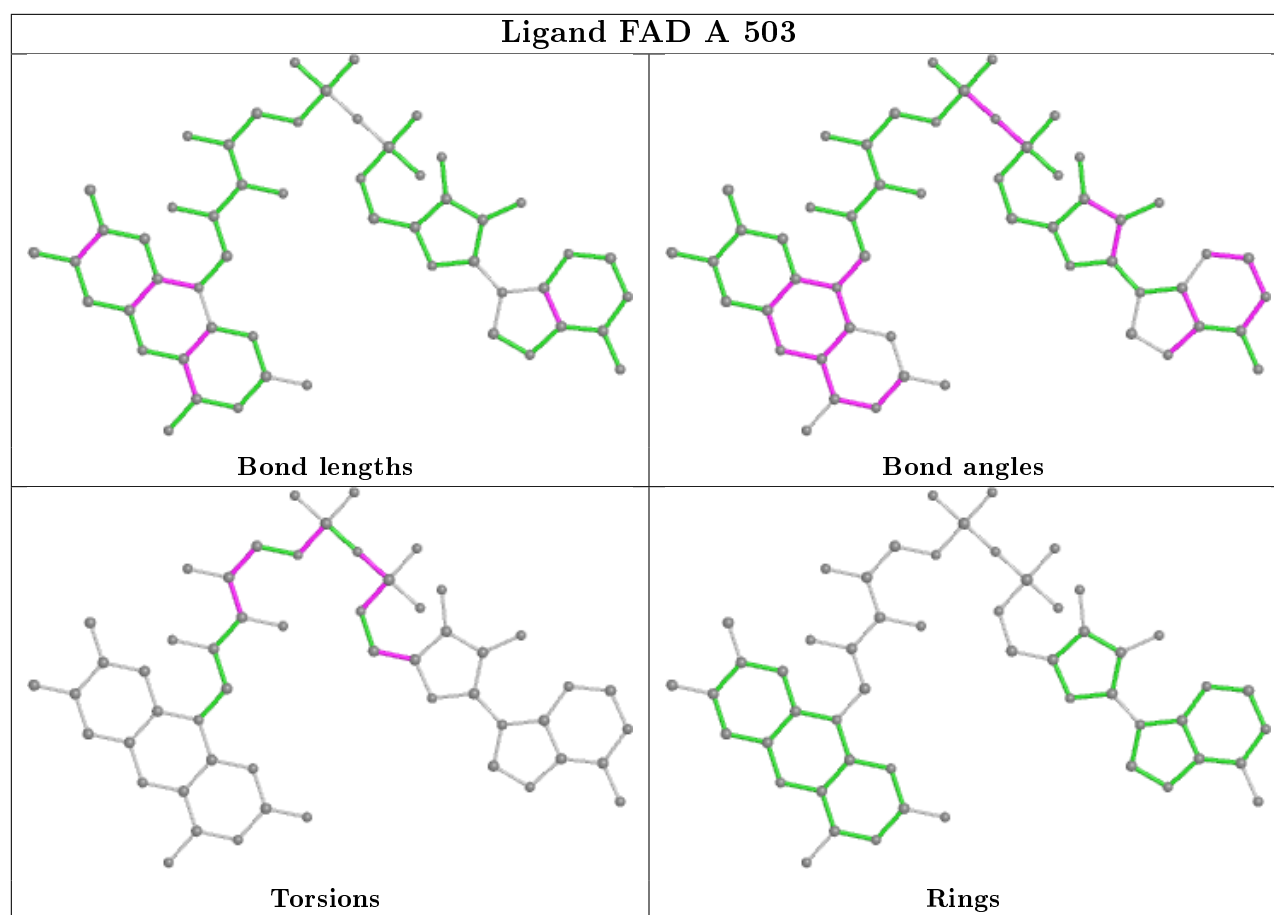
Continued on next page...

Continued from previous page...

Mol	Chain	Res	Type	Clashes	Symm-Clashes
5	B	302	FES	1	0

The following is a two-dimensional graphical depiction of Mogul quality analysis of bond lengths, bond angles, torsion angles, and ring geometry for all instances of the Ligand of Interest. In addition, ligands with molecular weight > 250 and outliers as shown on the validation Tables will also be included. For torsion angles, if less than 5% of the Mogul distribution of torsion angles is within 10 degrees of the torsion angle in question, then that torsion angle is considered an outlier. Any bond that is central to one or more torsion angles identified as an outlier by Mogul will be highlighted in the graph. For rings, the root-mean-square deviation (RMSD) between the ring in question and similar rings identified by Mogul is calculated over all ring torsion angles. If the average RMSD is greater than 60 degrees and the minimal RMSD between the ring in question and any Mogul-identified rings is also greater than 60 degrees, then that ring is considered an outlier. The outliers are highlighted in purple. The color gray indicates Mogul did not find sufficient equivalents in the CSD to analyse the geometry.





5.7 Other polymers [i](#)

There are no such residues in this entry.

5.8 Polymer linkage issues [i](#)

There are no chain breaks in this entry.

6 Fit of model and data ⓘ

6.1 Protein, DNA and RNA chains ⓘ

In the following table, the column labelled ‘#RSRZ> 2’ contains the number (and percentage) of RSRZ outliers, followed by percent RSRZ outliers for the chain as percentile scores relative to all X-ray entries and entries of similar resolution. The OWAB column contains the minimum, median, 95th percentile and maximum values of the occupancy-weighted average B-factor per residue. The column labelled ‘Q< 0.9’ lists the number of (and percentage) of residues with an average occupancy less than 0.9.

Mol	Chain	Analysed	<RSRZ>	#RSRZ>2	OWAB(Å ²)	Q<0.9
1	A	462/476 (97%)	0.27	34 (7%) 14 18	26, 41, 66, 114	0
2	B	282/289 (97%)	0.46	31 (10%) 5 7	27, 39, 66, 93	0
All	All	744/765 (97%)	0.34	65 (8%) 10 12	26, 40, 66, 114	0

All (65) RSRZ outliers are listed below:

Mol	Chain	Res	Type	RSRZ
1	A	5	ILE	5.5
2	B	283	LEU	5.4
2	B	165	PHE	5.3
1	A	74	ASP	5.1
1	A	382	GLY	4.8
1	A	384	ARG	4.8
2	B	166	LEU	4.7
1	A	410	LYS	4.7
2	B	148	ALA	3.8
1	A	115	LYS	3.8
2	B	167	ALA	3.8
1	A	413	TRP	3.8
2	B	151	ARG	3.7
2	B	1	MET	3.6
2	B	170	LYS	3.6
2	B	181	ARG	3.6
2	B	168	ASN	3.6
1	A	411	VAL	3.5
1	A	49	TYR	3.4
1	A	360	GLU	3.4
2	B	152	HIS	3.4
1	A	386	ILE	3.2
2	B	154	VAL	3.2
1	A	116	VAL	3.1

Continued on next page...

Continued from previous page...

Mol	Chain	Res	Type	RSRZ
2	B	280	MET	3.1
2	B	145	LEU	3.1
1	A	101	CYS	3.1
2	B	150	THR	3.0
1	A	349	PHE	2.9
2	B	2	TYR	2.8
1	A	79	ALA	2.8
1	A	416	THR	2.8
2	B	211	TYR	2.7
2	B	163	GLN	2.7
1	A	179	GLU	2.6
1	A	383	LYS	2.6
2	B	147	LYS	2.6
2	B	55	GLU	2.6
2	B	265	VAL	2.5
2	B	173	SER	2.5
1	A	154	GLY	2.5
1	A	72	ASN	2.4
1	A	334	ILE	2.4
2	B	78	LYS	2.4
2	B	172	VAL	2.4
2	B	282	GLU	2.3
2	B	171	ASN	2.3
1	A	473	LYS	2.3
1	A	76	PRO	2.3
2	B	23	HIS	2.3
1	A	148	LYS	2.3
2	B	232	ALA	2.3
1	A	471	LEU	2.3
2	B	175	ARG	2.2
1	A	424	TRP	2.2
1	A	114	GLY	2.2
2	B	185	GLU	2.2
1	A	323	TYR	2.2
1	A	385	LYS	2.1
1	A	155	LYS	2.1
1	A	73	ARG	2.1
1	A	81	ARG	2.0
1	A	374	PRO	2.0
1	A	75	ASN	2.0
2	B	45	ILE	2.0

6.2 Non-standard residues in protein, DNA, RNA chains [i](#)

There are no non-standard protein/DNA/RNA residues in this entry.

6.3 Carbohydrates [i](#)

There are no carbohydrates in this entry.

6.4 Ligands [i](#)

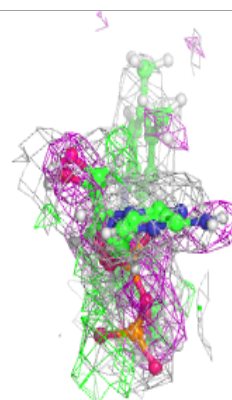
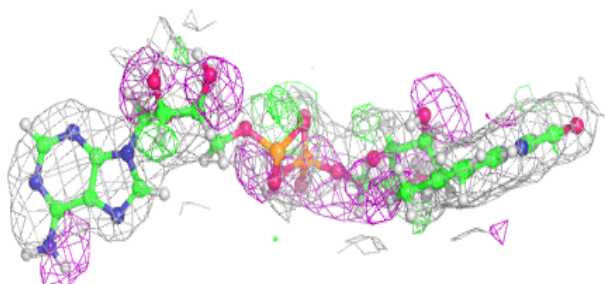
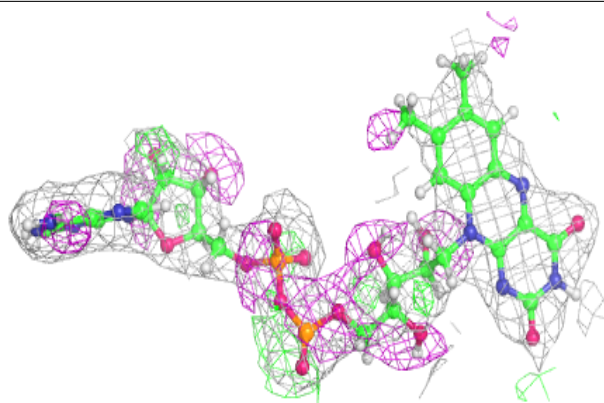
In the following table, the Atoms column lists the number of modelled atoms in the group and the number defined in the chemical component dictionary. The B-factors column lists the minimum, median, 95th percentile and maximum values of B factors of atoms in the group. The column labelled 'Q< 0.9' lists the number of atoms with occupancy less than 0.9.

Mol	Type	Chain	Res	Atoms	RSCC	RSR	B-factors(\AA^2)	Q<0.9
6	MG	B	303	1/1	0.73	0.31	34,34,34,34	0
4	FAD	A	503	53/53	0.85	0.24	26,35,46,53	0
4	FAD	B	301	53/53	0.91	0.21	28,37,41,44	0
5	FES	B	302	4/4	0.93	0.14	35,35,36,39	0
3	SF4	A	502	8/8	0.95	0.08	40,45,46,53	0
3	SF4	A	501	8/8	0.96	0.12	37,39,40,40	0

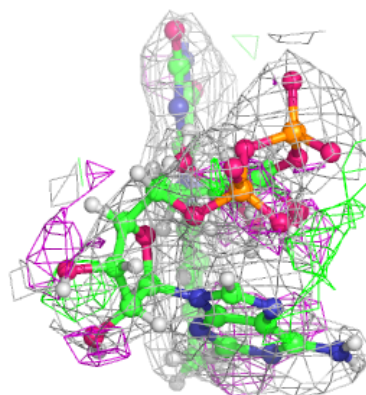
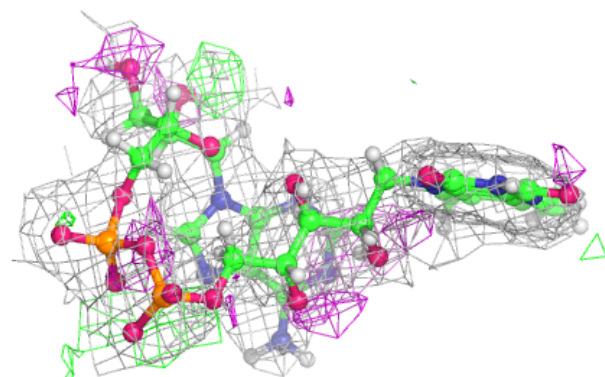
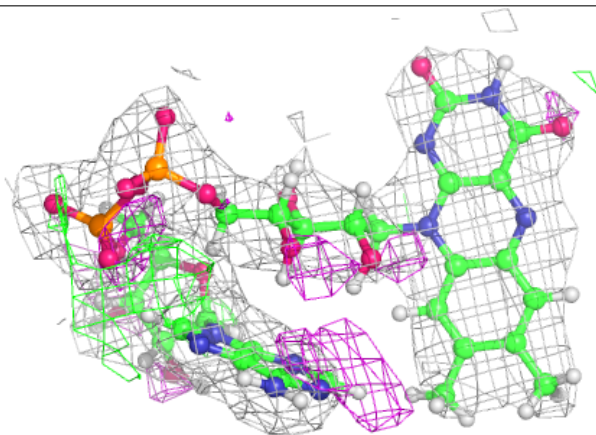
The following is a graphical depiction of the model fit to experimental electron density of all instances of the Ligand of Interest. In addition, ligands with molecular weight > 250 and outliers as shown on the geometry validation Tables will also be included. Each fit is shown from different orientation to approximate a three-dimensional view.

Electron density around FAD A 503:

$2mF_o-DF_c$ (at 0.7 rmsd) in gray
 mF_o-DF_c (at 3 rmsd) in purple (negative)
and green (positive)

**Electron density around FAD B 301:**

$2mF_o-DF_c$ (at 0.7 rmsd) in gray
 mF_o-DF_c (at 3 rmsd) in purple (negative)
and green (positive)



6.5 Other polymers

There are no such residues in this entry.