



# wwPDB X-ray Structure Validation Summary Report ⓘ

May 13, 2020 – 09:25 am BST

PDB ID : 2VK4  
Title : Crystal structure of pyruvate decarboxylase from Kluyveromyces lactis  
Authors : Kutter, S.; Relle, S.; Wille, G.; Weiss, M.S.; Konig, S.  
Deposited on : 2007-12-17  
Resolution : 1.95 Å(reported)

This is a wwPDB X-ray Structure Validation Summary Report for a publicly released PDB entry.

We welcome your comments at [validation@mail.wwpdb.org](mailto:validation@mail.wwpdb.org)

A user guide is available at

<https://www.wwpdb.org/validation/2017/XrayValidationReportHelp>

with specific help available everywhere you see the ⓘ symbol.

---

The following versions of software and data (see [references ⓘ](#)) were used in the production of this report:

MolProbity : 4.02b-467  
Mogul : 1.8.5 (274361), CSD as541be (2020)  
Xtriage (Phenix) : 1.13  
EDS : 2.11  
buster-report : 1.1.7 (2018)  
Percentile statistics : 20191225.v01 (using entries in the PDB archive December 25th 2019)  
Refmac : 5.8.0158  
CCP4 : 7.0.044 (Gargrove)  
Ideal geometry (proteins) : Engh & Huber (2001)  
Ideal geometry (DNA, RNA) : Parkinson et al. (1996)  
Validation Pipeline (wwPDB-VP) : 2.11

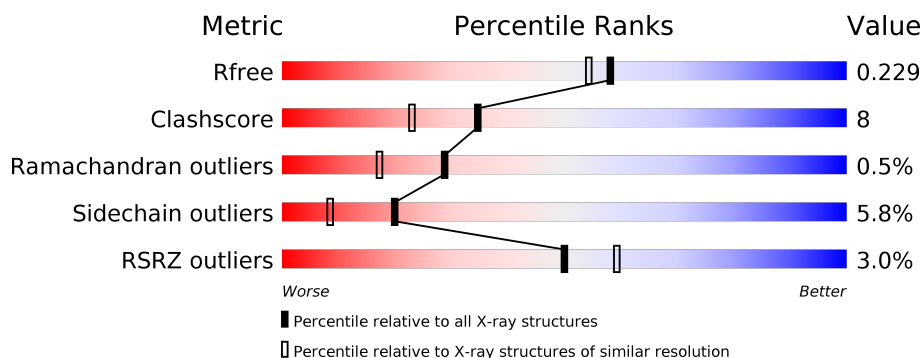
# 1 Overall quality at a glance

The following experimental techniques were used to determine the structure:

## *X-RAY DIFFRACTION*

The reported resolution of this entry is 1.95 Å.

Percentile scores (ranging between 0-100) for global validation metrics of the entry are shown in the following graphic. The table shows the number of entries on which the scores are based.



Metric	Whole archive (#Entries)	Similar resolution (#Entries, resolution range(Å))
$R_{free}$	130704	2580 (1.96-1.96)
Clashscore	141614	2705 (1.96-1.96)
Ramachandran outliers	138981	2678 (1.96-1.96)
Sidechain outliers	138945	2678 (1.96-1.96)
RSRZ outliers	127900	2539 (1.96-1.96)

The table below summarises the geometric issues observed across the polymeric chains and their fit to the electron density. The red, orange, yellow and green segments on the lower bar indicate the fraction of residues that contain outliers for  $\geq 3$ , 2, 1 and 0 types of geometric quality criteria respectively. A grey segment represents the fraction of residues that are not modelled. The numeric value for each fraction is indicated below the corresponding segment, with a dot representing fractions  $\leq 5\%$ . The upper red bar (where present) indicates the fraction of residues that have poor fit to the electron density. The numeric value is given above the bar.

Mol	Chain	Length	Quality of chain
1	A	563	<div> <div>3%</div> <div> <div></div> <div>82%</div> <div>14%</div> <div>• •</div> </div> </div>
1	B	563	<div> <div>4%</div> <div> <div></div> <div>81%</div> <div>14%</div> <div>• •</div> </div> </div>
1	C	563	<div> <div>3%</div> <div> <div></div> <div>82%</div> <div>15%</div> <div>• • •</div> </div> </div>
1	D	563	<div> <div>2%</div> <div> <div></div> <div>80%</div> <div>17%</div> <div>• •</div> </div> </div>

## 2 Entry composition [i](#)

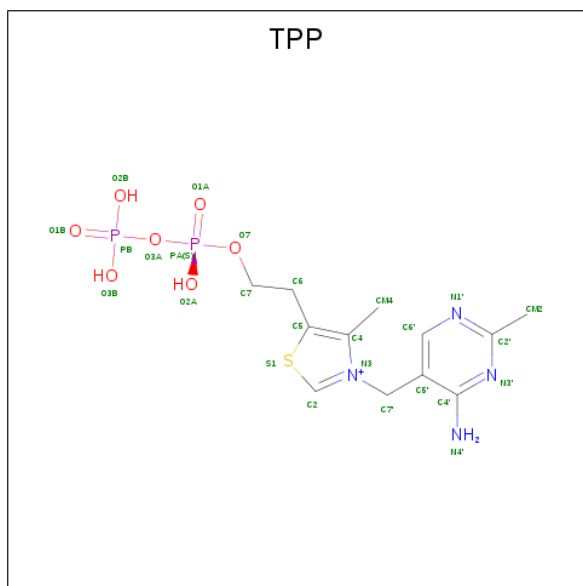
There are 4 unique types of molecules in this entry. The entry contains 18654 atoms, of which 0 are hydrogens and 0 are deuteriums.

In the tables below, the ZeroOcc column contains the number of atoms modelled with zero occupancy, the AltConf column contains the number of residues with at least one atom in alternate conformation and the Trace column contains the number of residues modelled with at most 2 atoms.

- Molecule 1 is a protein called PYRUVATE DECARBOXYLASE.

Mol	Chain	Residues	Atoms					ZeroOcc	AltConf	Trace
1	A	560	Total	C	N	O	S	0	0	0
			4324	2754	723	833	14			
1	B	557	Total	C	N	O	S	0	0	0
			4293	2733	716	830	14			
1	C	555	Total	C	N	O	S	0	0	0
			4286	2731	715	826	14			
1	D	560	Total	C	N	O	S	0	0	0
			4324	2754	723	833	14			

- Molecule 2 is THIAMINE DIPHOSPHATE (three-letter code: TPP) (formula: C<sub>12</sub>H<sub>19</sub>N<sub>4</sub>O<sub>7</sub>P<sub>2</sub>S).



Mol	Chain	Residues	Atoms					ZeroOcc	AltConf
2	A	1	Total	C	N	O	P	S	0
			26	12	4	7	2	1	
2	B	1	Total	C	N	O	P	S	0
			26	12	4	7	2	1	

*Continued on next page...*

*Continued from previous page...*

Mol	Chain	Residues	Atoms					ZeroOcc	AltConf
2	C	1	Total	C	N	O	P	S	
			26	12	4	7	2	1	
2	D	1	Total	C	N	O	P	S	
			26	12	4	7	2	1	

- Molecule 3 is MAGNESIUM ION (three-letter code: MG) (formula: Mg).

Mol	Chain	Residues	Atoms		ZeroOcc	AltConf
3	B	1	Total	Mg		
			1	1	0	0
3	A	1	Total	Mg		
			1	1	0	0
3	D	1	Total	Mg		
			1	1	0	0
3	C	1	Total	Mg		
			1	1	0	0

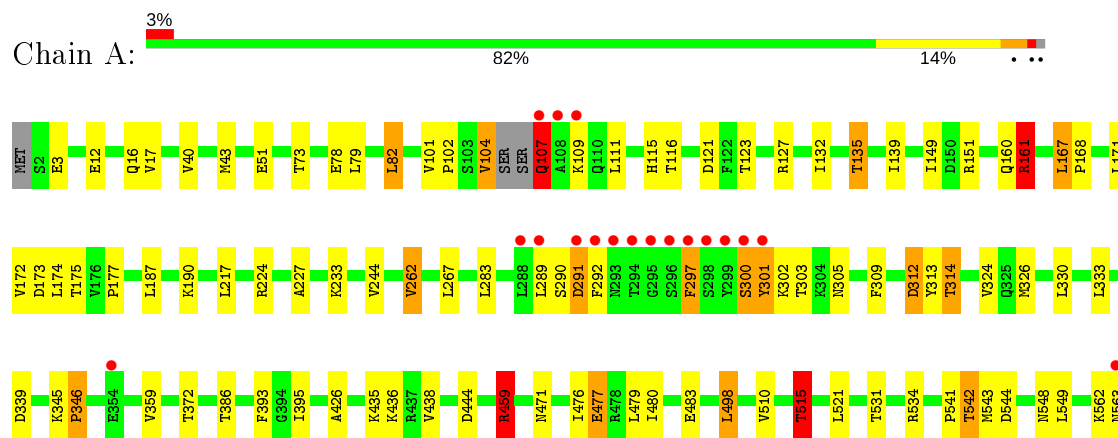
- Molecule 4 is water.

Mol	Chain	Residues	Atoms		ZeroOcc	AltConf
4	A	310	Total	O		
			310	310	0	0
4	B	326	Total	O		
			326	326	0	0
4	C	376	Total	O		
			376	376	0	0
4	D	307	Total	O		
			307	307	0	0

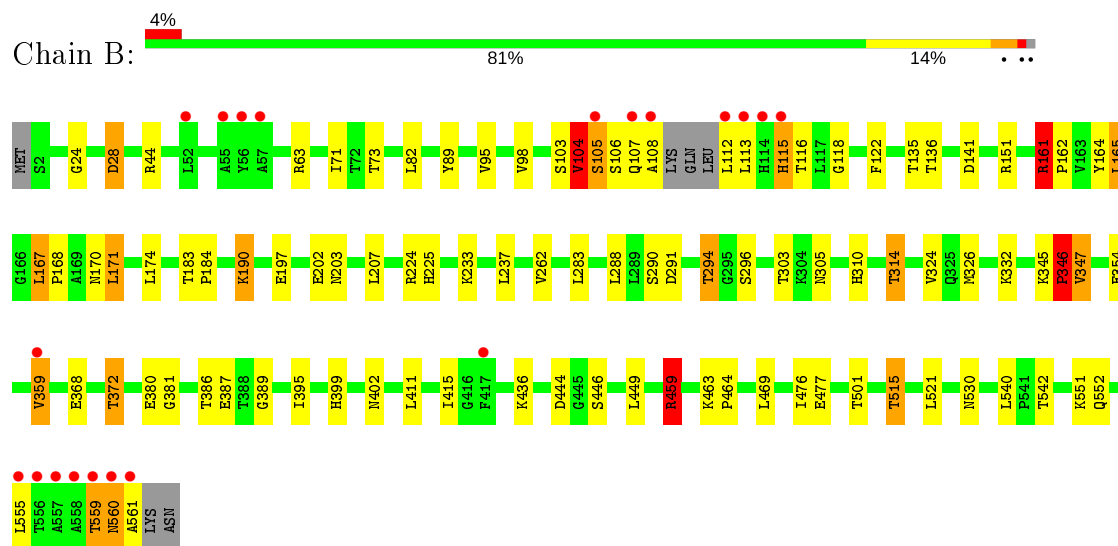
### 3 Residue-property plots [i](#)

These plots are drawn for all protein, RNA and DNA chains in the entry. The first graphic for a chain summarises the proportions of the various outlier classes displayed in the second graphic. The second graphic shows the sequence view annotated by issues in geometry and electron density. Residues are color-coded according to the number of geometric quality criteria for which they contain at least one outlier: green = 0, yellow = 1, orange = 2 and red = 3 or more. A red dot above a residue indicates a poor fit to the electron density ( $RSRZ > 2$ ). Stretches of 2 or more consecutive residues without any outlier are shown as a green connector. Residues present in the sample, but not in the model, are shown in grey.

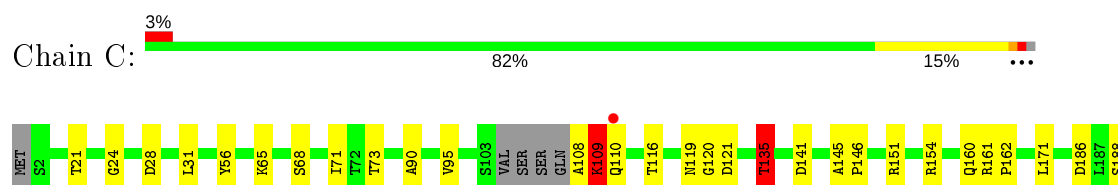
#### • Molecule 1: PYRUVATE DECARBOXYLASE

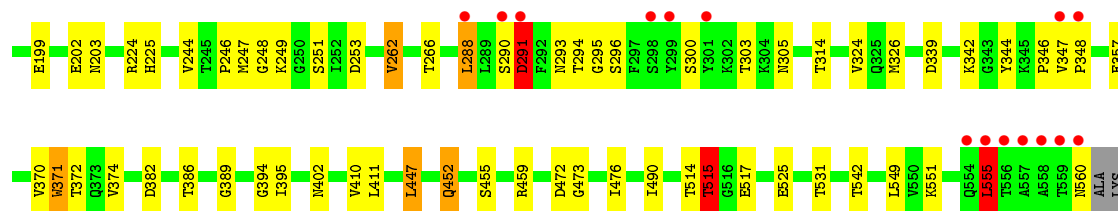


#### • Molecule 1: PYRUVATE DECARBOXYLASE



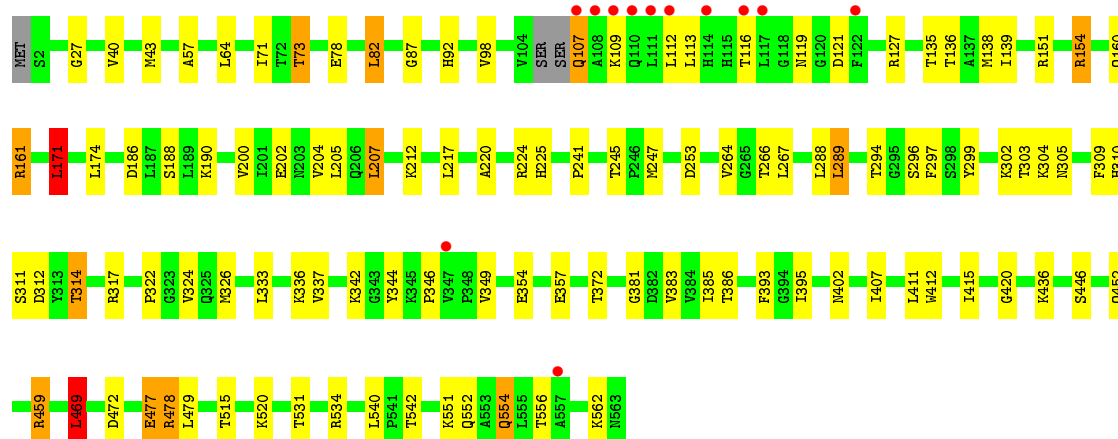
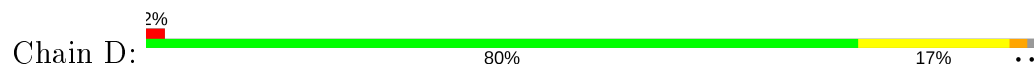
#### • Molecule 1: PYRUVATE DECARBOXYLASE





ASN

• Molecule 1: PYRUVATE DECARBOXYLASE



## 4 Data and refinement statistics

Property	Value	Source
Space group	P 1 21 1	Depositor
Cell constants a, b, c, $\alpha$ , $\beta$ , $\gamma$	78.71Å 203.18Å 79.81Å 90.00° 91.81° 90.00°	Depositor
Resolution (Å)	48.45 – 1.95 48.47 – 1.95	Depositor EDS
% Data completeness (in resolution range)	100.0 (48.45-1.95) 85.4 (48.47-1.95)	Depositor EDS
$R_{merge}$	0.10	Depositor
$R_{sym}$	(Not available)	Depositor
$\langle I/\sigma(I) \rangle$ <sup>1</sup>	1.87 (at 1.95Å)	Xtriage
Refinement program	REFMAC 5.2.0019	Depositor
R, $R_{free}$	0.178 , 0.230 0.177 , 0.229	Depositor DCC
$R_{free}$ test set	7829 reflections (5.02%)	wwPDB-VP
Wilson B-factor (Å <sup>2</sup> )	19.3	Xtriage
Anisotropy	0.131	Xtriage
Bulk solvent $k_{sol}$ (e/Å <sup>3</sup> ), $B_{sol}$ (Å <sup>2</sup> )	0.36 , 46.4	EDS
L-test for twinning <sup>2</sup>	$\langle  L  \rangle = 0.48$ , $\langle L^2 \rangle = 0.32$	Xtriage
Estimated twinning fraction	0.006 for l,k,-h 0.033 for h,-k,-l 0.025 for l,-k,h	Xtriage
$F_o, F_c$ correlation	0.95	EDS
Total number of atoms	18654	wwPDB-VP
Average B, all atoms (Å <sup>2</sup> )	22.0	wwPDB-VP

Xtriage's analysis on translational NCS is as follows: *The largest off-origin peak in the Patterson function is 3.43% of the height of the origin peak. No significant pseudotranslation is detected.*

<sup>1</sup> Intensities estimated from amplitudes.

<sup>2</sup> Theoretical values of  $\langle |L| \rangle$ ,  $\langle L^2 \rangle$  for acentric reflections are 0.5, 0.333 respectively for untwinned datasets, and 0.375, 0.2 for perfectly twinned datasets.

## 5 Model quality [i](#)

### 5.1 Standard geometry [i](#)

Bond lengths and bond angles in the following residue types are not validated in this section: MG, TPP

The Z score for a bond length (or angle) is the number of standard deviations the observed value is removed from the expected value. A bond length (or angle) with  $|Z| > 5$  is considered an outlier worth inspection. RMSZ is the root-mean-square of all Z scores of the bond lengths (or angles).

Mol	Chain	Bond lengths		Bond angles	
		RMSZ	# Z  >5	RMSZ	# Z  >5
1	A	0.89	2/4415 (0.0%)	0.85	8/6009 (0.1%)
1	B	0.87	1/4384 (0.0%)	0.96	12/5969 (0.2%)
1	C	0.91	2/4377 (0.0%)	0.86	7/5958 (0.1%)
1	D	0.88	3/4415 (0.1%)	0.86	8/6009 (0.1%)
All	All	0.89	8/17591 (0.0%)	0.88	35/23945 (0.1%)

Chiral center outliers are detected by calculating the chiral volume of a chiral center and verifying if the center is modelled as a planar moiety or with the opposite hand. A planarity outlier is detected by checking planarity of atoms in a peptide group, atoms in a mainchain group or atoms of a sidechain that are expected to be planar.

Mol	Chain	#Chirality outliers	#Planarity outliers
1	A	4	1
1	B	4	2
1	C	6	1
1	D	7	0
All	All	21	4

The worst 5 of 8 bond length outliers are listed below:

Mol	Chain	Res	Type	Atoms	Z	Observed(Å)	Ideal(Å)
1	A	115	HIS	CA-CB	-13.55	1.24	1.53
1	D	107	GLN	CA-CB	-8.75	1.34	1.53
1	C	371	TRP	CB-CG	6.47	1.61	1.50
1	B	561	ALA	CA-C	6.20	1.69	1.52
1	D	73	THR	C-O	-6.16	1.11	1.23

The worst 5 of 35 bond angle outliers are listed below:



Mol	Chain	Res	Type	Atoms	Z	Observed(°)	Ideal(°)
1	B	561	ALA	N-CA-C	-26.55	39.32	111.00
1	B	161	ARG	NE-CZ-NH2	-11.37	114.62	120.30
1	B	161	ARG	NE-CZ-NH1	11.28	125.94	120.30
1	D	107	GLN	N-CA-CB	9.12	127.01	110.60
1	D	478	ARG	NE-CZ-NH2	-8.36	116.12	120.30

5 of 21 chirality outliers are listed below:

Mol	Chain	Res	Type	Atom
1	A	73	THR	CB
1	A	116	THR	CB
1	A	303	THR	CB
1	A	372	THR	CB
1	B	73	THR	CB

All (4) planarity outliers are listed below:

Mol	Chain	Res	Type	Group
1	A	107	GLN	Peptide
1	B	104	VAL	Mainchain
1	B	107	GLN	Peptide
1	C	108	ALA	Peptide

## 5.2 Too-close contacts

In the following table, the Non-H and H(model) columns list the number of non-hydrogen atoms and hydrogen atoms in the chain respectively. The H(added) column lists the number of hydrogen atoms added and optimized by MolProbity. The Clashes column lists the number of clashes within the asymmetric unit, whereas Symm-Clashes lists symmetry related clashes.

Mol	Chain	Non-H	H(model)	H(added)	Clashes	Symm-Clashes
1	A	4324	0	4300	85	0
1	B	4293	0	4259	76	0
1	C	4286	0	4259	65	0
1	D	4324	0	4300	78	0
2	A	26	0	16	0	0
2	B	26	0	16	1	0
2	C	26	0	16	1	0
2	D	26	0	16	0	0
3	A	1	0	0	0	0
3	B	1	0	0	0	0
3	C	1	0	0	0	0

*Continued on next page...*

*Continued from previous page...*

Mol	Chain	Non-H	H(model)	H(added)	Clashes	Symm-Clashes
3	D	1	0	0	0	0
4	A	310	0	0	15	0
4	B	326	0	0	9	0
4	C	376	0	0	18	0
4	D	307	0	0	11	0
All	All	18654	0	17182	285	0

The all-atom clashscore is defined as the number of clashes found per 1000 atoms (including hydrogen atoms). The all-atom clashscore for this structure is 8.

The worst 5 of 285 close contacts within the same asymmetric unit are listed below, sorted by their clash magnitude.

Atom-1	Atom-2	Interatomic distance (Å)	Clash overlap (Å)
1:D:303:THR:HG22	1:D:305:ASN:N	1.67	1.09
1:B:303:THR:HG22	1:B:305:ASN:H	1.15	1.08
1:D:303:THR:HG22	1:D:305:ASN:H	0.91	1.06
1:B:294:THR:HG22	1:B:296:SER:H	1.15	1.06
1:D:303:THR:CG2	1:D:305:ASN:H	1.70	1.05

There are no symmetry-related clashes.

## 5.3 Torsion angles [i](#)

### 5.3.1 Protein backbone [i](#)

In the following table, the Percentiles column shows the percent Ramachandran outliers of the chain as a percentile score with respect to all X-ray entries followed by that with respect to entries of similar resolution.

The Analysed column shows the number of residues for which the backbone conformation was analysed, and the total number of residues.

Mol	Chain	Analysed	Favoured	Allowed	Outliers	Percentiles	
1	A	556/563 (99%)	527 (95%)	24 (4%)	5 (1%)	17	8
1	B	553/563 (98%)	538 (97%)	11 (2%)	4 (1%)	22	11
1	C	551/563 (98%)	535 (97%)	14 (2%)	2 (0%)	34	22
1	D	556/563 (99%)	539 (97%)	17 (3%)	0	100	100
All	All	2216/2252 (98%)	2139 (96%)	66 (3%)	11 (0%)	29	17

5 of 11 Ramachandran outliers are listed below:

Mol	Chain	Res	Type
1	A	301	TYR
1	B	346	PRO
1	B	347	VAL
1	B	559	THR
1	C	109	LYS

### 5.3.2 Protein sidechains ⓘ

In the following table, the Percentiles column shows the percent sidechain outliers of the chain as a percentile score with respect to all X-ray entries followed by that with respect to entries of similar resolution.

The Analysed column shows the number of residues for which the sidechain conformation was analysed, and the total number of residues.

Mol	Chain	Analysed	Rotameric	Outliers	Percentiles	
1	A	471/474 (99%)	440 (93%)	31 (7%)	16	6
1	B	468/474 (99%)	438 (94%)	30 (6%)	17	6
1	C	467/474 (98%)	448 (96%)	19 (4%)	30	18
1	D	471/474 (99%)	442 (94%)	29 (6%)	18	7
All	All	1877/1896 (99%)	1768 (94%)	109 (6%)	20	8

5 of 109 residues with a non-rotameric sidechain are listed below:

Mol	Chain	Res	Type
1	B	346	PRO
1	C	65	LYS
1	D	452	GLN
1	B	359	VAL
1	B	515	THR

Some sidechains can be flipped to improve hydrogen bonding and reduce clashes. All (2) such sidechains are listed below:

Mol	Chain	Res	Type
1	B	114	HIS
1	D	107	GLN

### 5.3.3 RNA ⓘ

There are no RNA molecules in this entry.

## 5.4 Non-standard residues in protein, DNA, RNA chains ⓘ

There are no non-standard protein/DNA/RNA residues in this entry.

## 5.5 Carbohydrates ⓘ

There are no carbohydrates in this entry.

## 5.6 Ligand geometry ⓘ

Of 8 ligands modelled in this entry, 4 are monoatomic - leaving 4 for Mogul analysis.

In the following table, the Counts columns list the number of bonds (or angles) for which Mogul statistics could be retrieved, the number of bonds (or angles) that are observed in the model and the number of bonds (or angles) that are defined in the Chemical Component Dictionary. The Link column lists molecule types, if any, to which the group is linked. The Z score for a bond length (or angle) is the number of standard deviations the observed value is removed from the expected value. A bond length (or angle) with  $|Z| > 2$  is considered an outlier worth inspection. RMSZ is the root-mean-square of all Z scores of the bond lengths (or angles).

Mol	Type	Chain	Res	Link	Bond lengths			Bond angles		
					Counts	RMSZ	# Z  > 2	Counts	RMSZ	# Z  > 2
2	TPP	D	600	3	22,27,27	1.64	6 (27%)	29,40,40	1.79	6 (20%)
2	TPP	C	600	3	22,27,27	2.66	5 (22%)	29,40,40	1.71	7 (24%)
2	TPP	B	600	3	22,27,27	2.11	7 (31%)	29,40,40	1.68	6 (20%)
2	TPP	A	600	3	22,27,27	1.88	6 (27%)	29,40,40	1.96	8 (27%)

In the following table, the Chirals column lists the number of chiral outliers, the number of chiral centers analysed, the number of these observed in the model and the number defined in the Chemical Component Dictionary. Similar counts are reported in the Torsion and Rings columns. '-' means no outliers of that kind were identified.

Mol	Type	Chain	Res	Link	Chirals	Torsions	Rings
2	TPP	D	600	3	-	3/16/17/17	0/2/2/2
2	TPP	C	600	3	-	4/16/17/17	0/2/2/2
2	TPP	B	600	3	-	3/16/17/17	0/2/2/2
2	TPP	A	600	3	-	3/16/17/17	0/2/2/2

The worst 5 of 24 bond length outliers are listed below:

Mol	Chain	Res	Type	Atoms	Z	Observed(Å)	Ideal(Å)
2	C	600	TPP	C6-C5	10.26	1.55	1.50
2	A	600	TPP	C6-C5	5.93	1.53	1.50
2	B	600	TPP	C6-C5	5.64	1.53	1.50
2	B	600	TPP	C6'-N1'	4.48	1.43	1.34
2	C	600	TPP	C4'-N3'	3.48	1.40	1.35

The worst 5 of 27 bond angle outliers are listed below:

Mol	Chain	Res	Type	Atoms	Z	Observed(°)	Ideal(°)
2	D	600	TPP	CM2-C2'-N1'	5.83	123.55	117.14
2	B	600	TPP	CM2-C2'-N1'	5.20	122.86	117.14
2	A	600	TPP	C6-C5-C4	4.18	130.79	127.43
2	A	600	TPP	N1'-C2'-N3'	-3.90	118.82	125.54
2	A	600	TPP	C6'-N1'-C2'	3.74	122.33	115.96

There are no chirality outliers.

5 of 13 torsion outliers are listed below:

Mol	Chain	Res	Type	Atoms
2	C	600	TPP	PA-O3A-PB-O3B
2	A	600	TPP	C4-C5-C6-C7
2	A	600	TPP	PA-O3A-PB-O3B
2	D	600	TPP	PA-O3A-PB-O3B
2	B	600	TPP	PA-O3A-PB-O3B

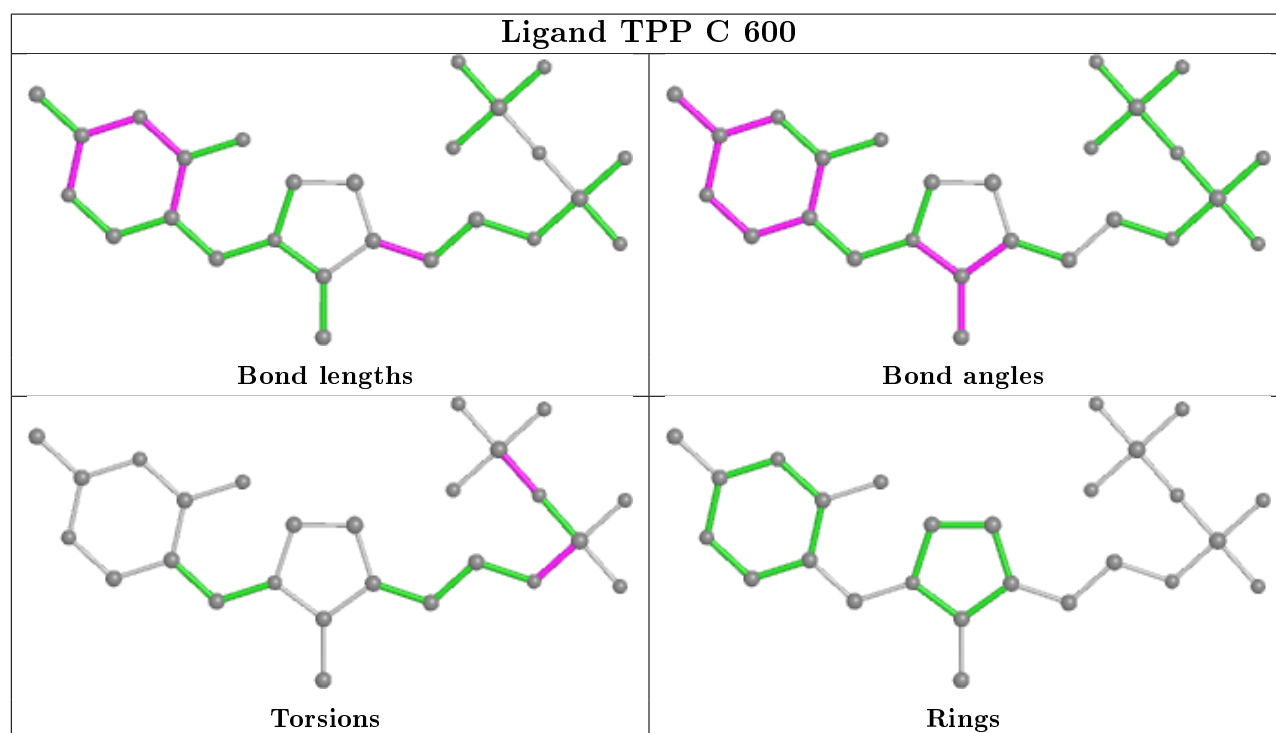
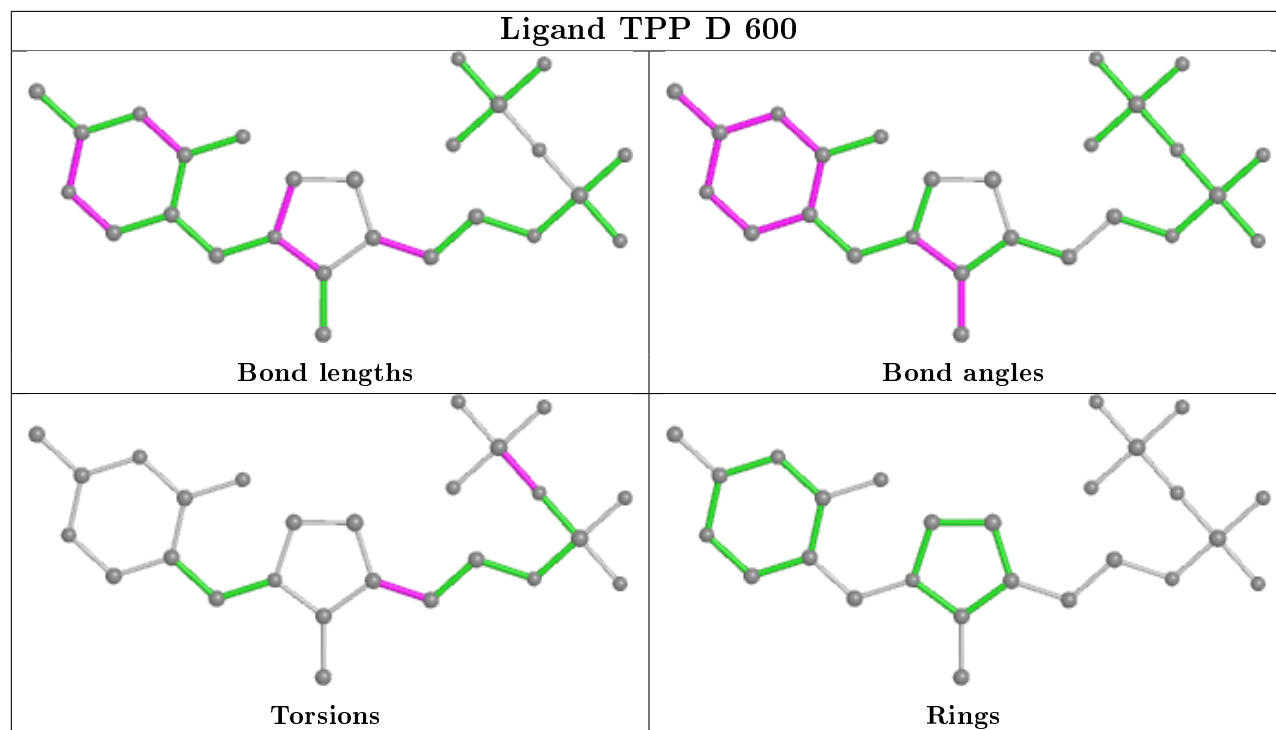
There are no ring outliers.

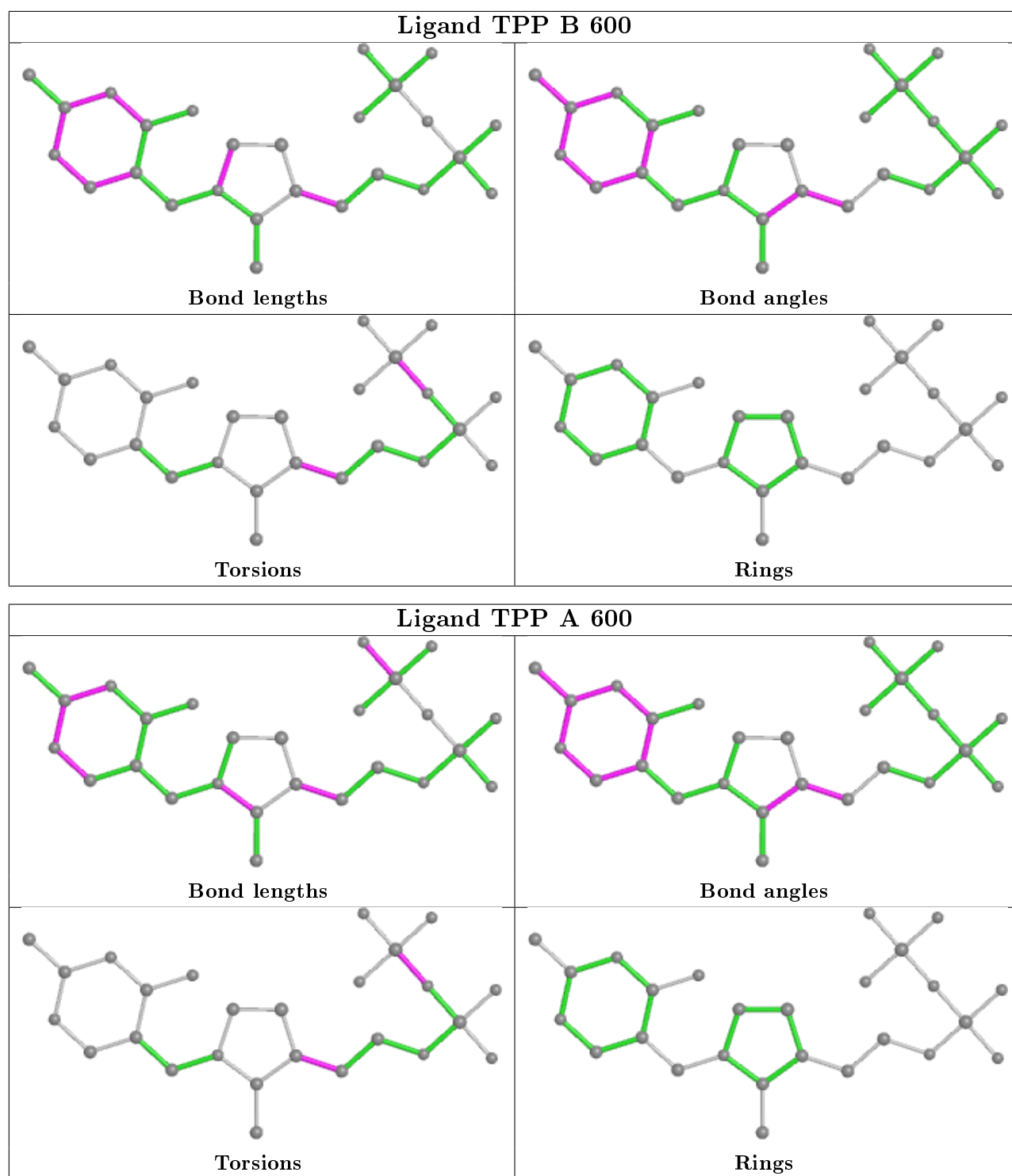
2 monomers are involved in 2 short contacts:

Mol	Chain	Res	Type	Clashes	Symm-Clashes
2	C	600	TPP	1	0
2	B	600	TPP	1	0

The following is a two-dimensional graphical depiction of Mogul quality analysis of bond lengths, bond angles, torsion angles, and ring geometry for all instances of the Ligand of Interest. In addition, ligands with molecular weight > 250 and outliers as shown on the validation Tables will also be included. For torsion angles, if less than 5% of the Mogul distribution of torsion angles is within 10 degrees of the torsion angle in question, then that torsion angle is considered an outlier. Any bond that is central to one or more torsion angles identified as an outlier by Mogul will be highlighted in the graph. For rings, the root-mean-square deviation (RMSD) between the ring in question and similar rings identified by Mogul is calculated over all ring torsion angles. If the average RMSD is greater than 60 degrees and the minimal RMSD between the ring in question and

any Mogul-identified rings is also greater than 60 degrees, then that ring is considered an outlier. The outliers are highlighted in purple. The color gray indicates Mogul did not find sufficient equivalents in the CSD to analyse the geometry.





## 5.7 Other polymers [\(i\)](#)

There are no such residues in this entry.

## 5.8 Polymer linkage issues ⓘ

There are no chain breaks in this entry.



## 6 Fit of model and data [i](#)

### 6.1 Protein, DNA and RNA chains [i](#)

In the following table, the column labelled ‘#RSRZ> 2’ contains the number (and percentage) of RSRZ outliers, followed by percent RSRZ outliers for the chain as percentile scores relative to all X-ray entries and entries of similar resolution. The OWAB column contains the minimum, median, 95<sup>th</sup> percentile and maximum values of the occupancy-weighted average B-factor per residue. The column labelled ‘Q< 0.9’ lists the number of (and percentage) of residues with an average occupancy less than 0.9.

Mol	Chain	Analysed	<RSRZ>	#RSRZ>2	OWAB(Å <sup>2</sup> )	Q<0.9
1	A	560/563 (99%)	-0.07	18 (3%) 47 57	9, 21, 44, 74	0
1	B	557/563 (98%)	0.14	20 (3%) 42 52	9, 20, 37, 79	0
1	C	555/563 (98%)	-0.11	16 (2%) 51 60	8, 17, 41, 81	0
1	D	560/563 (99%)	-0.12	12 (2%) 63 72	8, 20, 42, 68	0
All	All	2232/2252 (99%)	-0.04	66 (2%) 50 59	8, 19, 42, 81	0

The worst 5 of 66 RSRZ outliers are listed below:

Mol	Chain	Res	Type	RSRZ
1	B	558	ALA	9.9
1	C	559	THR	9.5
1	C	560	ASN	8.5
1	D	107	GLN	7.4
1	B	561	ALA	7.4

### 6.2 Non-standard residues in protein, DNA, RNA chains [i](#)

There are no non-standard protein/DNA/RNA residues in this entry.

### 6.3 Carbohydrates [i](#)

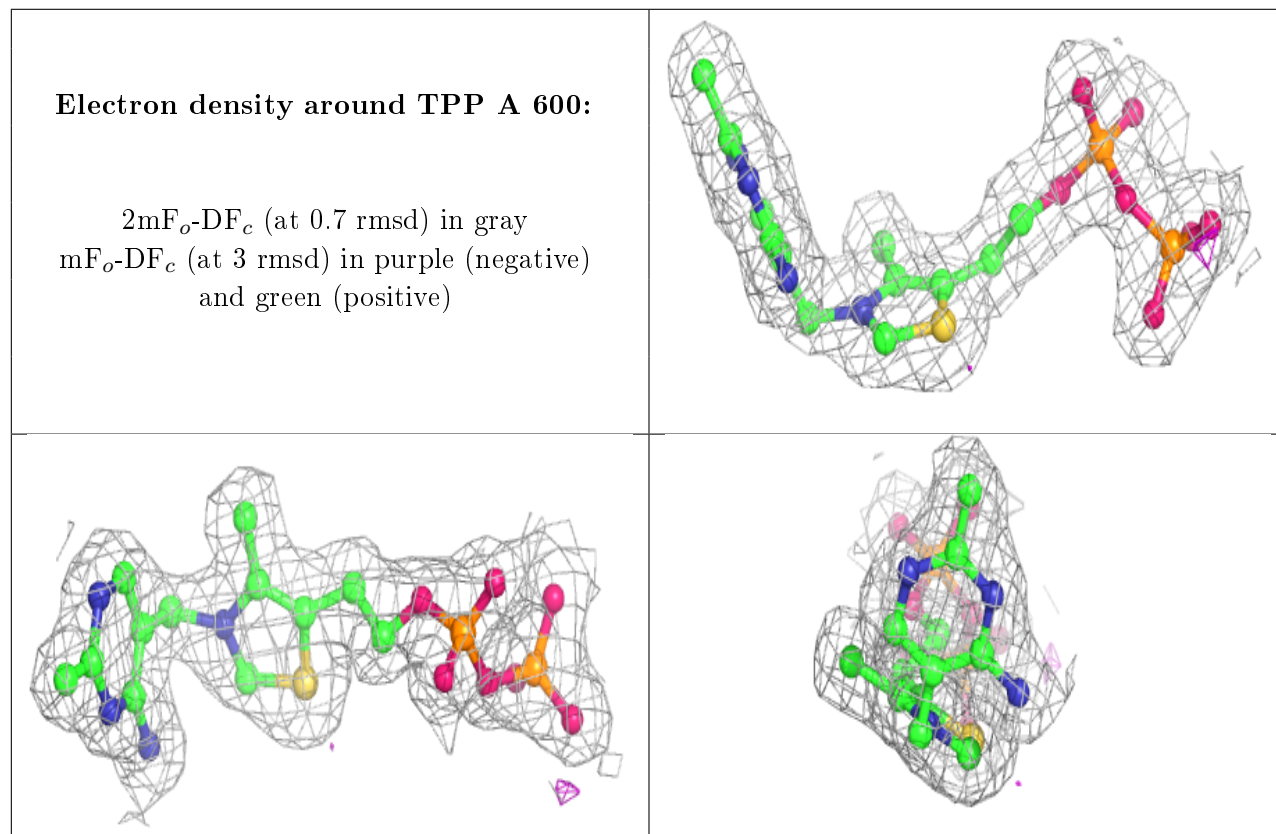
There are no carbohydrates in this entry.

### 6.4 Ligands [i](#)

In the following table, the Atoms column lists the number of modelled atoms in the group and the number defined in the chemical component dictionary. The B-factors column lists the minimum, median, 95<sup>th</sup> percentile and maximum values of B factors of atoms in the group. The column labelled ‘Q< 0.9’ lists the number of atoms with occupancy less than 0.9.

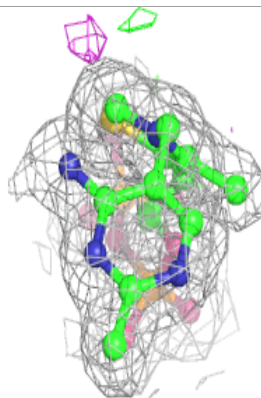
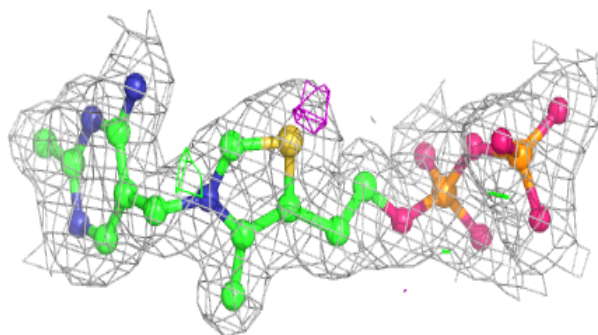
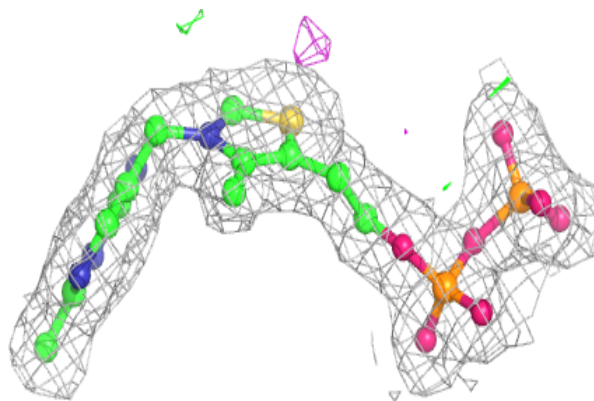
Mol	Type	Chain	Res	Atoms	RSCC	RSR	B-factors( $\text{\AA}^2$ )	Q<0.9
3	MG	B	601	1/1	0.97	0.09	17,17,17,17	0
2	TPP	A	600	26/26	0.98	0.10	10,13,15,16	0
3	MG	D	601	1/1	0.98	0.14	20,20,20,20	0
3	MG	A	601	1/1	0.98	0.06	15,15,15,15	0
3	MG	C	601	1/1	0.99	0.09	12,12,12,12	0
2	TPP	D	600	26/26	0.99	0.10	8,14,17,18	0
2	TPP	C	600	26/26	0.99	0.11	7,10,12,14	0
2	TPP	B	600	26/26	0.99	0.11	9,12,15,15	0

The following is a graphical depiction of the model fit to experimental electron density of all instances of the Ligand of Interest. In addition, ligands with molecular weight > 250 and outliers as shown on the geometry validation Tables will also be included. Each fit is shown from different orientation to approximate a three-dimensional view.

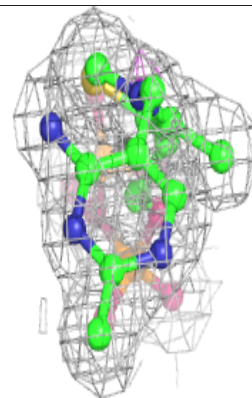
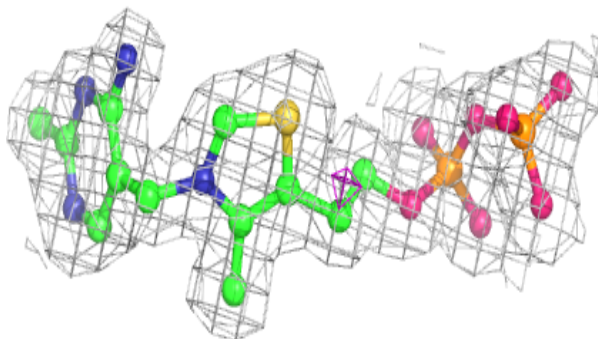
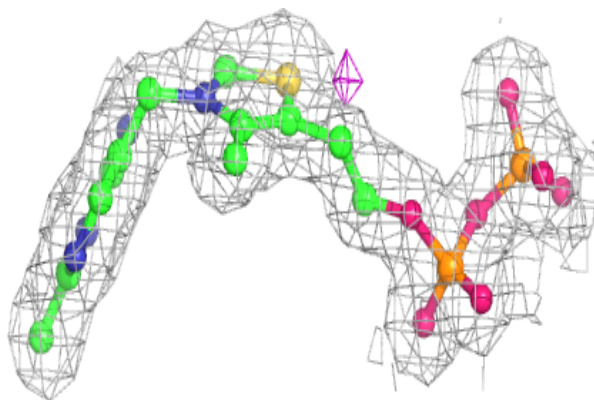


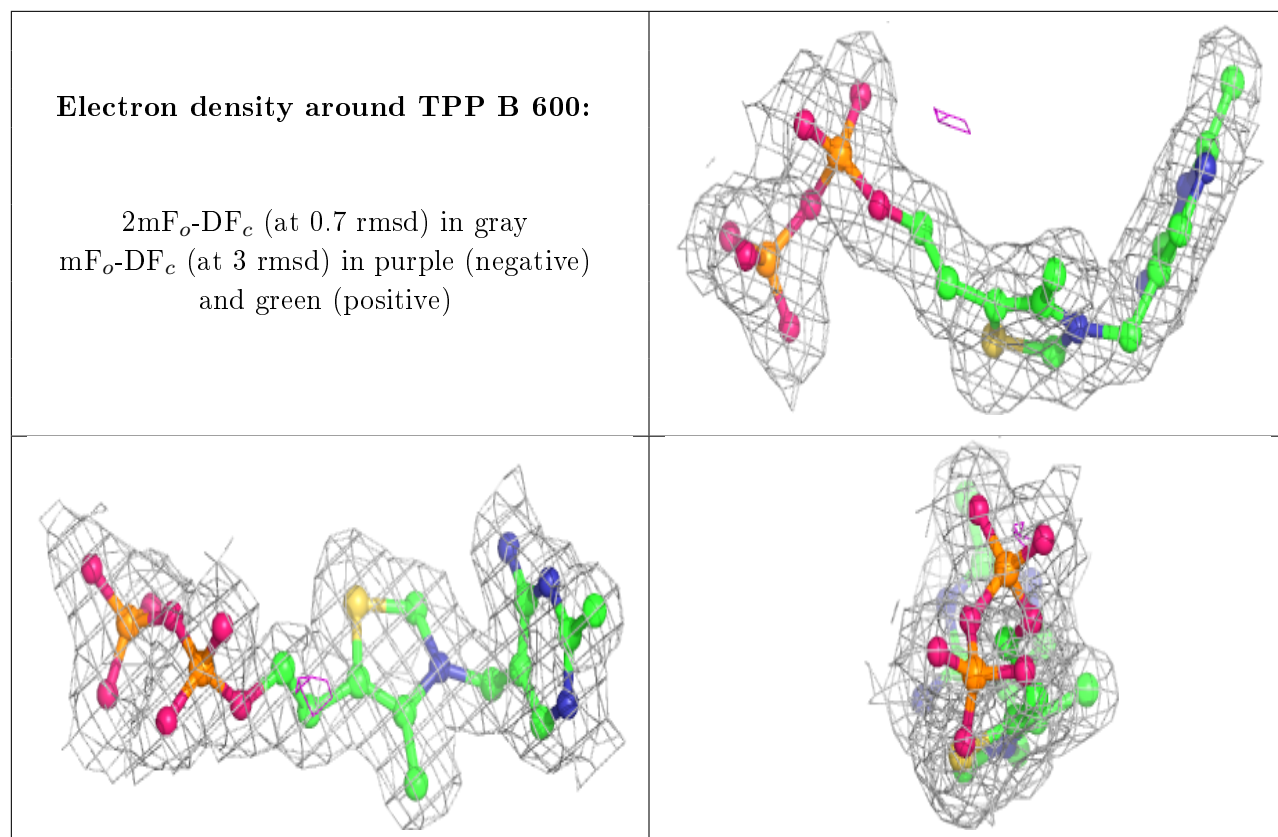
**Electron density around TPP D 600:**

$2mF_o-DF_c$  (at 0.7 rmsd) in gray  
 $mF_o-DF_c$  (at 3 rmsd) in purple (negative)  
and green (positive)

**Electron density around TPP C 600:**

$2mF_o-DF_c$  (at 0.7 rmsd) in gray  
 $mF_o-DF_c$  (at 3 rmsd) in purple (negative)  
and green (positive)





## 6.5 Other polymers [i](#)

There are no such residues in this entry.