



# Full wwPDB X-ray Structure Validation Report ⓘ

Oct 4, 2021 – 10:08 AM JST

PDB ID : 7VKO  
Title : Crystal structure of TrkA kinase with repotrectinib  
Authors : Murray, B.W.; Rogers, E.; Zhai, D.; Deng, W.; Chen, X.; Sprengeler, P.A.; Zhang, X.; Graber, A.; Reich, S.H.; Stopatschinskaja, S.; Solomon, B.; Besse, B.; Drilon, A.  
Deposited on : 2021-09-30  
Resolution : 2.90 Å(reported)

This is a Full wwPDB X-ray Structure Validation Report for a publicly released PDB entry.

We welcome your comments at [validation@mail.wwpdb.org](mailto:validation@mail.wwpdb.org)

A user guide is available at

<https://www.wwpdb.org/validation/2017/XrayValidationReportHelp>

with specific help available everywhere you see the ⓘ symbol.

---

The following versions of software and data (see [references ⓘ](#)) were used in the production of this report:

MolProbity : 4.02b-467  
Mogul : 1.8.5 (274361), CSD as541be (2020)  
Xtriage (Phenix) : 1.13  
EDS : 2.23.2  
buster-report : 1.1.7 (2018)  
Percentile statistics : 20191225.v01 (using entries in the PDB archive December 25th 2019)  
Refmac : 5.8.0158  
CCP4 : 7.0.044 (Gargrove)  
Ideal geometry (proteins) : Engh & Huber (2001)  
Ideal geometry (DNA, RNA) : Parkinson et al. (1996)  
Validation Pipeline (wwPDB-VP) : 2.23.2

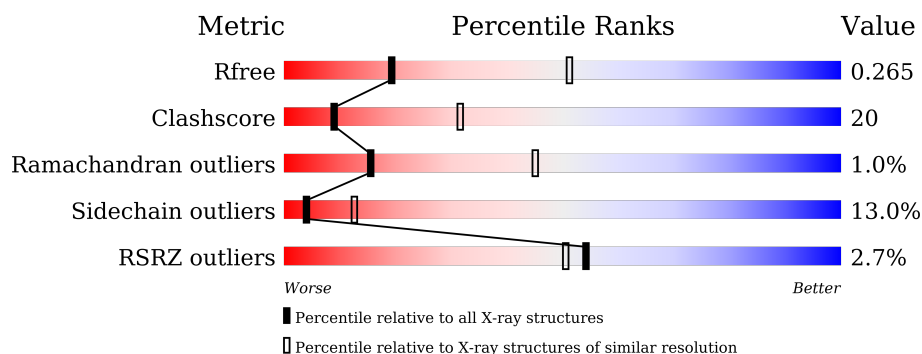
# 1 Overall quality at a glance

The following experimental techniques were used to determine the structure:

*X-RAY DIFFRACTION*

The reported resolution of this entry is 2.90 Å.

Percentile scores (ranging between 0-100) for global validation metrics of the entry are shown in the following graphic. The table shows the number of entries on which the scores are based.



Metric	Whole archive (#Entries)	Similar resolution (#Entries, resolution range(Å))
$R_{free}$	130704	1957 (2.90-2.90)
Clashscore	141614	2172 (2.90-2.90)
Ramachandran outliers	138981	2115 (2.90-2.90)
Sidechain outliers	138945	2117 (2.90-2.90)
RSRZ outliers	127900	1906 (2.90-2.90)

The table below summarises the geometric issues observed across the polymeric chains and their fit to the electron density. The red, orange, yellow and green segments of the lower bar indicate the fraction of residues that contain outliers for  $\geq 3$ , 2, 1 and 0 types of geometric quality criteria respectively. A grey segment represents the fraction of residues that are not modelled. The numeric value for each fraction is indicated below the corresponding segment, with a dot representing fractions  $\leq 5\%$ . The upper red bar (where present) indicates the fraction of residues that have poor fit to the electron density. The numeric value is given above the bar.

Mol	Chain	Length	Quality of chain
1	A	326	

The following table lists non-polymeric compounds, carbohydrate monomers and non-standard residues in protein, DNA, RNA chains that are outliers for geometric or electron-density-fit criteria:

Mol	Type	Chain	Res	Chirality	Geometry	Clashes	Electron density
3	SO4	A	802	-	-	-	X

## 2 Entry composition

There are 4 unique types of molecules in this entry. The entry contains 2435 atoms, of which 0 are hydrogens and 0 are deuteriums.

In the tables below, the ZeroOcc column contains the number of atoms modelled with zero occupancy, the AltConf column contains the number of residues with at least one atom in alternate conformation and the Trace column contains the number of residues modelled with at most 2 atoms.

- Molecule 1 is a protein called Tyrosine-protein kinase receptor.

Mol	Chain	Residues	Atoms					ZeroOcc	AltConf	Trace
1	A	297	Total	C	N	O	S	0	0	0
			2363	1507	426	415	15			

There are 31 discrepancies between the modelled and reference sequences:

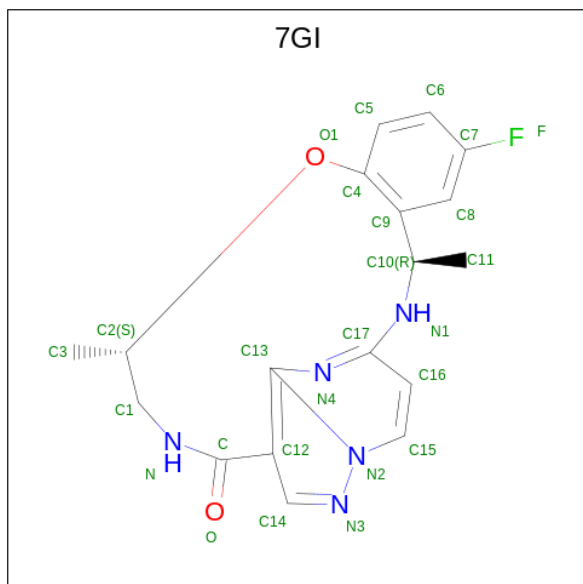
Chain	Residue	Modelled	Actual	Comment	Reference
A	471	MET	-	initiating methionine	UNP J3KP20
A	472	SER	-	expression tag	UNP J3KP20
A	473	TYR	-	expression tag	UNP J3KP20
A	474	TYR	-	expression tag	UNP J3KP20
A	475	HIS	-	expression tag	UNP J3KP20
A	476	HIS	-	expression tag	UNP J3KP20
A	477	HIS	-	expression tag	UNP J3KP20
A	478	HIS	-	expression tag	UNP J3KP20
A	479	HIS	-	expression tag	UNP J3KP20
A	480	HIS	-	expression tag	UNP J3KP20
A	481	ASP	-	expression tag	UNP J3KP20
A	482	TYR	-	expression tag	UNP J3KP20
A	483	ASP	-	expression tag	UNP J3KP20
A	484	ILE	-	expression tag	UNP J3KP20
A	485	PRO	-	expression tag	UNP J3KP20
A	486	THR	-	expression tag	UNP J3KP20
A	487	THR	-	expression tag	UNP J3KP20
A	488	GLU	-	expression tag	UNP J3KP20
A	489	ASN	-	expression tag	UNP J3KP20
A	490	LEU	-	expression tag	UNP J3KP20
A	491	TYR	-	expression tag	UNP J3KP20
A	492	PHE	-	expression tag	UNP J3KP20
A	493	GLN	-	expression tag	UNP J3KP20
A	494	GLY	-	expression tag	UNP J3KP20
A	495	ALA	-	expression tag	UNP J3KP20
A	496	MET	-	expression tag	UNP J3KP20
A	497	GLY	-	expression tag	UNP J3KP20

*Continued on next page...*

Continued from previous page...

Chain	Residue	Modelled	Actual	Comment	Reference
A	498	SER	-	expression tag	UNP J3KP20
A	499	GLY	-	expression tag	UNP J3KP20
A	500	ILE	-	expression tag	UNP J3KP20
A	501	ARG	-	expression tag	UNP J3KP20

- Molecule 2 is Repotrectinib (three-letter code: 7GI) (formula:  $C_{18}H_{18}FN_5O_2$ ) (labeled as "Ligand of Interest" by depositor).



Mol	Chain	Residues	Atoms				ZeroOcc	AltConf
2	A	1	Total	C	F	N	O	0
			26	18	1	5	2	

- Molecule 3 is SULFATE ION (three-letter code: SO4) (formula:  $O_4S$ ).



Mol	Chain	Residues	Atoms			ZeroOcc	AltConf
3	A	1	Total	O	S	0	0
			5	4	1		
3	A	1	Total	O	S	0	0
			5	4	1		
3	A	1	Total	O	S	0	0
			5	4	1		
3	A	1	Total	O	S	0	0
			5	4	1		
3	A	1	Total	O	S	0	0
			5	4	1		

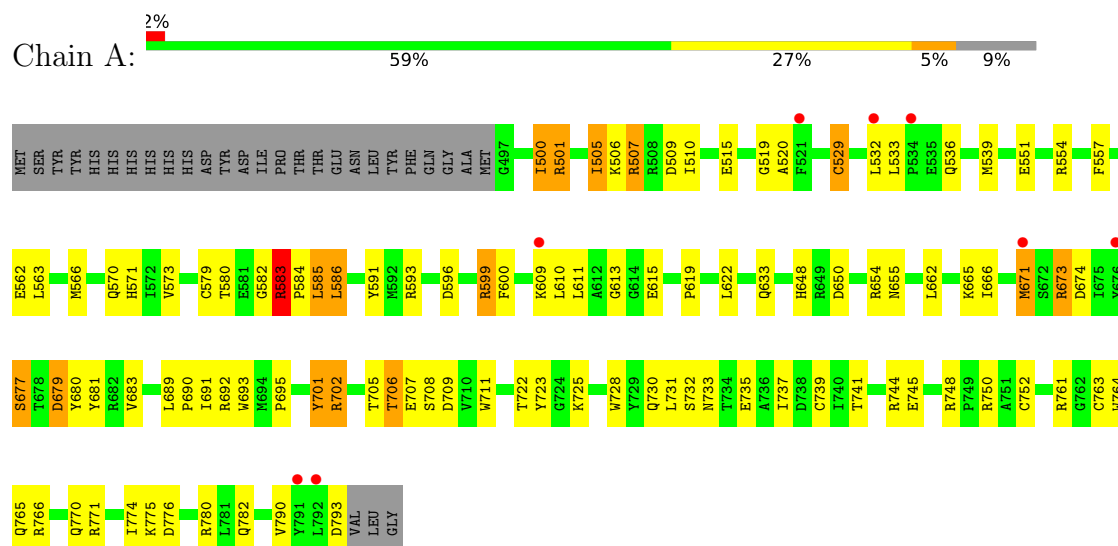
- Molecule 4 is water.

Mol	Chain	Residues	Atoms		ZeroOcc	AltConf
4	A	21	Total	O	0	0
			21	21		

### 3 Residue-property plots [i](#)

These plots are drawn for all protein, RNA, DNA and oligosaccharide chains in the entry. The first graphic for a chain summarises the proportions of the various outlier classes displayed in the second graphic. The second graphic shows the sequence view annotated by issues in geometry and electron density. Residues are color-coded according to the number of geometric quality criteria for which they contain at least one outlier: green = 0, yellow = 1, orange = 2 and red = 3 or more. A red dot above a residue indicates a poor fit to the electron density ( $RSRZ > 2$ ). Stretches of 2 or more consecutive residues without any outlier are shown as a green connector. Residues present in the sample, but not in the model, are shown in grey.

- Molecule 1: Tyrosine-protein kinase receptor



## 4 Data and refinement statistics

Property	Value	Source
Space group	H 3 2	Depositor
Cell constants a, b, c, $\alpha$ , $\beta$ , $\gamma$	104.76Å 104.76Å 204.51Å 90.00° 90.00° 120.00°	Depositor
Resolution (Å)	44.58 – 2.90 44.54 – 2.90	Depositor EDS
% Data completeness (in resolution range)	98.6 (44.58-2.90) 98.7 (44.54-2.90)	Depositor EDS
$R_{merge}$	0.06	Depositor
$R_{sym}$	(Not available)	Depositor
$\langle I/\sigma(I) \rangle$ <sup>1</sup>	2.24 (at 2.90Å)	Xtriage
Refinement program	REFMAC 5.8.0238	Depositor
R, $R_{free}$	0.184 , 0.267 0.198 , 0.265	Depositor DCC
$R_{free}$ test set	491 reflections (5.04%)	wwPDB-VP
Wilson B-factor (Å <sup>2</sup> )	86.5	Xtriage
Anisotropy	0.027	Xtriage
Bulk solvent $k_{sol}$ (e/Å <sup>3</sup> ), $B_{sol}$ (Å <sup>2</sup> )	0.33 , 72.6	EDS
L-test for twinning <sup>2</sup>	$\langle  L  \rangle = 0.50$ , $\langle L^2 \rangle = 0.34$	Xtriage
Estimated twinning fraction	No twinning to report.	Xtriage
$F_o, F_c$ correlation	0.96	EDS
Total number of atoms	2435	wwPDB-VP
Average B, all atoms (Å <sup>2</sup> )	103.0	wwPDB-VP

Xtriage's analysis on translational NCS is as follows: *The largest off-origin peak in the Patterson function is 5.13% of the height of the origin peak. No significant pseudotranslation is detected.*

<sup>1</sup>Intensities estimated from amplitudes.

<sup>2</sup>Theoretical values of  $\langle |L| \rangle$ ,  $\langle L^2 \rangle$  for acentric reflections are 0.5, 0.333 respectively for untwinned datasets, and 0.375, 0.2 for perfectly twinned datasets.

## 5 Model quality [i](#)

### 5.1 Standard geometry [i](#)

Bond lengths and bond angles in the following residue types are not validated in this section: SO4, 7GI

The Z score for a bond length (or angle) is the number of standard deviations the observed value is removed from the expected value. A bond length (or angle) with  $|Z| > 5$  is considered an outlier worth inspection. RMSZ is the root-mean-square of all Z scores of the bond lengths (or angles).

Mol	Chain	Bond lengths		Bond angles	
		RMSZ	$\# Z  > 5$	RMSZ	$\# Z  > 5$
1	A	0.67	0/2422	0.86	0/3280

Chiral center outliers are detected by calculating the chiral volume of a chiral center and verifying if the center is modelled as a planar moiety or with the opposite hand. A planarity outlier is detected by checking planarity of atoms in a peptide group, atoms in a mainchain group or atoms of a sidechain that are expected to be planar.

Mol	Chain	#Chirality outliers	#Planarity outliers
1	A	0	1

There are no bond length outliers.

There are no bond angle outliers.

There are no chirality outliers.

All (1) planarity outliers are listed below:

Mol	Chain	Res	Type	Group
1	A	583	ARG	Peptide

### 5.2 Too-close contacts [i](#)

In the following table, the Non-H and H(model) columns list the number of non-hydrogen atoms and hydrogen atoms in the chain respectively. The H(added) column lists the number of hydrogen atoms added and optimized by MolProbity. The Clashes column lists the number of clashes within the asymmetric unit, whereas Symm-Clashes lists symmetry-related clashes.

Mol	Chain	Non-H	H(model)	H(added)	Clashes	Symm-Clashes
1	A	2363	0	2341	95	1
2	A	26	0	0	1	0

*Continued on next page...*



*Continued from previous page...*

Mol	Chain	Non-H	H(model)	H(added)	Clashes	Symm-Clashes
3	A	25	0	0	1	0
4	A	21	0	0	3	0
All	All	2435	0	2341	96	1

The all-atom clashscore is defined as the number of clashes found per 1000 atoms (including hydrogen atoms). The all-atom clashscore for this structure is 20.

All (96) close contacts within the same asymmetric unit are listed below, sorted by their clash magnitude.

Atom-1	Atom-2	Interatomic distance (Å)	Clash overlap (Å)
1:A:599:ARG:NH2	4:A:901:HOH:O	1.76	1.13
1:A:520:ALA:N	1:A:673:ARG:HA	1.76	1.00
1:A:650:ASP:OD2	1:A:680:TYR:OH	1.78	0.99
1:A:557:PHE:CE2	1:A:585:LEU:HD13	2.07	0.90
1:A:745:GLU:OE1	1:A:761:ARG:NH2	2.05	0.89
1:A:705:THR:O	1:A:708:SER:N	2.09	0.86
1:A:506:LYS:H	1:A:506:LYS:CE	1.91	0.83
1:A:519:GLY:HA3	1:A:673:ARG:HB3	1.60	0.83
1:A:506:LYS:H	1:A:506:LYS:HE2	1.43	0.83
1:A:507:ARG:HE	1:A:582:GLY:H	1.26	0.80
1:A:505:ILE:HD11	1:A:532:LEU:HD21	1.64	0.80
1:A:509:ASP:O	1:A:529:CYS:HA	1.82	0.78
1:A:741:THR:O	1:A:766:ARG:NH2	2.15	0.78
1:A:557:PHE:CE2	1:A:585:LEU:CD1	2.66	0.78
1:A:501:ARG:HD2	4:A:906:HOH:O	1.85	0.76
1:A:536:GLN:HA	1:A:536:GLN:OE1	1.87	0.74
1:A:583:ARG:O	1:A:583:ARG:HG3	1.87	0.73
1:A:500:ILE:HD11	1:A:566:MET:SD	2.28	0.73
1:A:500:ILE:CD1	1:A:566:MET:SD	2.79	0.70
1:A:506:LYS:H	1:A:506:LYS:CD	2.04	0.70
1:A:557:PHE:CZ	1:A:585:LEU:HD13	2.27	0.69
1:A:501:ARG:HH11	1:A:501:ARG:CG	2.06	0.69
1:A:505:ILE:HD11	1:A:532:LEU:CD2	2.22	0.68
1:A:748:ARG:NH1	1:A:752:CYS:O	2.27	0.68
1:A:533:LEU:O	1:A:533:LEU:HD23	1.93	0.67
1:A:506:LYS:HE2	1:A:506:LYS:N	2.11	0.65
1:A:557:PHE:CD2	1:A:585:LEU:CD1	2.79	0.65
1:A:557:PHE:CD2	1:A:585:LEU:HD12	2.32	0.64
1:A:519:GLY:HA3	1:A:673:ARG:CB	2.26	0.64
1:A:679:ASP:HB3	1:A:693:TRP:CZ3	2.34	0.63
1:A:705:THR:O	1:A:707:GLU:N	2.30	0.63

*Continued on next page...*

*Continued from previous page...*

Atom-1	Atom-2	Interatomic distance (Å)	Clash overlap (Å)
1:A:532:LEU:C	1:A:532:LEU:HD13	2.19	0.62
1:A:671:MET:SD	1:A:671:MET:N	2.71	0.62
1:A:519:GLY:C	1:A:673:ARG:HA	2.20	0.62
1:A:520:ALA:HB2	1:A:671:MET:O	2.00	0.61
1:A:731:LEU:CD1	1:A:739:CYS:SG	2.89	0.61
1:A:510:ILE:O	1:A:510:ILE:HG22	2.01	0.60
1:A:507:ARG:HE	1:A:582:GLY:N	1.98	0.59
1:A:500:ILE:HD12	1:A:566:MET:HG3	1.86	0.57
1:A:570:GLN:O	1:A:665:LYS:HE2	2.03	0.57
1:A:763:CYS:O	1:A:771:ARG:HD3	2.05	0.56
1:A:500:ILE:HD12	1:A:566:MET:SD	2.46	0.55
1:A:500:ILE:HG13	1:A:562:GLU:CG	2.38	0.54
1:A:520:ALA:CB	1:A:671:MET:O	2.55	0.54
1:A:701:TYR:CD1	1:A:701:TYR:N	2.73	0.53
1:A:695:PRO:HG3	1:A:708:SER:HA	1.91	0.53
1:A:732:SER:H	1:A:735:GLU:HB2	1.74	0.53
1:A:571:HIS:HA	1:A:665:LYS:HG2	1.91	0.52
1:A:579:CYS:HB3	1:A:586:LEU:HB2	1.90	0.52
1:A:506:LYS:CD	1:A:506:LYS:N	2.73	0.52
1:A:507:ARG:NH1	1:A:584:PRO:O	2.42	0.52
1:A:501:ARG:HH11	1:A:501:ARG:HG2	1.75	0.51
1:A:722:THR:HB	1:A:725:LYS:HB2	1.92	0.51
1:A:782:GLN:HG3	3:A:803:SO4:O2	2.10	0.51
1:A:692:ARG:NH1	1:A:728:TRP:O	2.40	0.51
1:A:507:ARG:HH12	1:A:584:PRO:HD2	1.75	0.51
1:A:557:PHE:CG	1:A:585:LEU:HD12	2.45	0.51
1:A:733:ASN:O	1:A:737:ILE:HD12	2.11	0.50
1:A:500:ILE:HD12	1:A:566:MET:CG	2.41	0.50
1:A:655:ASN:OD1	1:A:673:ARG:NH1	2.45	0.49
1:A:580:THR:HA	1:A:585:LEU:HD22	1.94	0.49
1:A:591:TYR:CZ	1:A:593:ARG:HA	2.47	0.49
1:A:500:ILE:HG13	1:A:562:GLU:HG3	1.94	0.49
1:A:506:LYS:H	1:A:506:LYS:HD3	1.78	0.49
1:A:695:PRO:HB3	1:A:711:TRP:CG	2.47	0.48
1:A:765:GLN:HB2	1:A:771:ARG:HG2	1.95	0.48
1:A:674:ASP:HB3	1:A:677:SER:HB2	1.97	0.47
1:A:622:LEU:HD12	1:A:723:TYR:HE1	1.80	0.47
1:A:711:TRP:CD1	1:A:711:TRP:C	2.88	0.47
1:A:533:LEU:HD23	1:A:533:LEU:H	1.79	0.46
1:A:501:ARG:HG2	1:A:501:ARG:NH1	2.30	0.46
1:A:711:TRP:CE3	1:A:764:TRP:HA	2.50	0.46

*Continued on next page...*

Continued from previous page...

Atom-1	Atom-2	Interatomic distance (Å)	Clash overlap (Å)
1:A:613:GLY:HA2	1:A:619:PRO:HG3	1.96	0.46
1:A:648:HIS:O	1:A:709:ASP:OD1	2.34	0.46
2:A:801:7GI:N	2:A:801:7GI:N4	2.61	0.46
1:A:571:HIS:NE2	1:A:633:GLN:HG2	2.31	0.45
1:A:532:LEU:C	1:A:532:LEU:CD1	2.86	0.45
1:A:731:LEU:HD11	1:A:739:CYS:SG	2.57	0.44
1:A:705:THR:C	1:A:707:GLU:N	2.70	0.44
1:A:533:LEU:HD22	1:A:539:MET:SD	2.58	0.43
1:A:551:GLU:OE2	1:A:554:ARG:HD3	2.18	0.42
1:A:765:GLN:HG3	1:A:770:GLN:O	2.19	0.42
1:A:776:ASP:O	1:A:780:ARG:HG3	2.18	0.42
1:A:563:LEU:HD12	1:A:563:LEU:HA	1.90	0.42
1:A:501:ARG:CD	4:A:906:HOH:O	2.58	0.42
1:A:599:ARG:HG2	1:A:600:PHE:N	2.31	0.42
1:A:501:ARG:HH11	1:A:501:ARG:HG3	1.83	0.42
1:A:708:SER:O	1:A:711:TRP:HB3	2.19	0.41
1:A:650:ASP:OD1	1:A:654:ARG:NH2	2.54	0.41
1:A:500:ILE:HG13	1:A:562:GLU:HG2	2.01	0.41
1:A:737:ILE:O	1:A:741:THR:HG23	2.21	0.41
1:A:566:MET:HE2	1:A:566:MET:HB2	1.84	0.41
1:A:681:TYR:CD1	1:A:733:ASN:HB3	2.56	0.40
1:A:580:THR:HA	1:A:585:LEU:CD2	2.51	0.40
1:A:691:ILE:HD13	1:A:691:ILE:HA	1.89	0.40
1:A:690:PRO:O	1:A:690:PRO:HG2	2.22	0.40

All (1) symmetry-related close contacts are listed below. The label for Atom-2 includes the symmetry operator and encoded unit-cell translations to be applied.

Atom-1	Atom-2	Interatomic distance (Å)	Clash overlap (Å)
1:A:702:ARG:NH2	1:A:702:ARG:NH2[17_434]	1.41	0.79

## 5.3 Torsion angles [i](#)

### 5.3.1 Protein backbone [i](#)

In the following table, the Percentiles column shows the percent Ramachandran outliers of the chain as a percentile score with respect to all X-ray entries followed by that with respect to entries of similar resolution.

The Analysed column shows the number of residues for which the backbone conformation was

analysed, and the total number of residues.

Mol	Chain	Analysed	Favoured	Allowed	Outliers	Percentiles	
1	A	295/326 (90%)	270 (92%)	22 (8%)	3 (1%)	15	45

All (3) Ramachandran outliers are listed below:

Mol	Chain	Res	Type
1	A	706	THR
1	A	673	ARG
1	A	573	VAL

### 5.3.2 Protein sidechains ⓘ

In the following table, the Percentiles column shows the percent sidechain outliers of the chain as a percentile score with respect to all X-ray entries followed by that with respect to entries of similar resolution.

The Analysed column shows the number of residues for which the sidechain conformation was analysed, and the total number of residues.

Mol	Chain	Analysed	Rotameric	Outliers	Percentiles	
1	A	246/274 (90%)	214 (87%)	32 (13%)	4	12

All (32) residues with a non-rotameric sidechain are listed below:

Mol	Chain	Res	Type
1	A	500	ILE
1	A	501	ARG
1	A	505	ILE
1	A	507	ARG
1	A	515	GLU
1	A	529	CYS
1	A	583	ARG
1	A	585	LEU
1	A	586	LEU
1	A	596	ASP
1	A	599	ARG
1	A	609	LYS
1	A	610	LEU
1	A	611	LEU
1	A	615	GLU
1	A	662	LEU
1	A	666	ILE

*Continued on next page...*

*Continued from previous page...*

Mol	Chain	Res	Type
1	A	671	MET
1	A	677	SER
1	A	679	ASP
1	A	683	VAL
1	A	689	LEU
1	A	701	TYR
1	A	702	ARG
1	A	706	THR
1	A	730	GLN
1	A	744	ARG
1	A	750	ARG
1	A	774	ILE
1	A	775	LYS
1	A	790	VAL
1	A	793	ASP

Sometimes sidechains can be flipped to improve hydrogen bonding and reduce clashes. All (5) such sidechains are listed below:

Mol	Chain	Res	Type
1	A	604	HIS
1	A	765	GLN
1	A	770	GLN
1	A	778	HIS
1	A	786	GLN

### 5.3.3 RNA ⓘ

There are no RNA molecules in this entry.

## 5.4 Non-standard residues in protein, DNA, RNA chains ⓘ

There are no non-standard protein/DNA/RNA residues in this entry.

## 5.5 Carbohydrates ⓘ

There are no monosaccharides in this entry.

## 5.6 Ligand geometry

6 ligands are modelled in this entry.

In the following table, the Counts columns list the number of bonds (or angles) for which Mogul statistics could be retrieved, the number of bonds (or angles) that are observed in the model and the number of bonds (or angles) that are defined in the Chemical Component Dictionary. The Link column lists molecule types, if any, to which the group is linked. The Z score for a bond length (or angle) is the number of standard deviations the observed value is removed from the expected value. A bond length (or angle) with  $|Z| > 2$  is considered an outlier worth inspection. RMSZ is the root-mean-square of all Z scores of the bond lengths (or angles).

Mol	Type	Chain	Res	Link	Bond lengths			Bond angles		
					Counts	RMSZ	# Z  > 2	Counts	RMSZ	# Z  > 2
2	7GI	A	801	-	23,29,29	2.34	3 (13%)	26,42,42	1.55	6 (23%)
3	SO4	A	803	-	4,4,4	0.53	0	6,6,6	0.09	0
3	SO4	A	805	-	4,4,4	0.49	0	6,6,6	0.05	0
3	SO4	A	806	-	4,4,4	0.49	0	6,6,6	0.06	0
3	SO4	A	802	-	4,4,4	0.29	0	6,6,6	0.18	0
3	SO4	A	804	-	4,4,4	0.47	0	6,6,6	0.06	0

In the following table, the Chirals column lists the number of chiral outliers, the number of chiral centers analysed, the number of these observed in the model and the number defined in the Chemical Component Dictionary. Similar counts are reported in the Torsion and Rings columns. '-' means no outliers of that kind were identified.

Mol	Type	Chain	Res	Link	Chirals	Torsions	Rings
2	7GI	A	801	-	-	4/19/21/21	0/3/4/4

All (3) bond length outliers are listed below:

Mol	Chain	Res	Type	Atoms	Z	Observed(Å)	Ideal(Å)
2	A	801	7GI	C12-C	-8.86	1.35	1.50
2	A	801	7GI	C9-C10	-4.26	1.46	1.52
2	A	801	7GI	C-N	3.51	1.41	1.33

All (6) bond angle outliers are listed below:

Mol	Chain	Res	Type	Atoms	Z	Observed(°)	Ideal(°)
2	A	801	7GI	C2-C1-N	-3.42	107.89	112.93
2	A	801	7GI	C12-C-N	2.73	119.99	116.30
2	A	801	7GI	O-C-N	-2.66	117.31	122.61
2	A	801	7GI	C6-C7-C8	-2.23	120.39	123.29
2	A	801	7GI	C9-C8-C7	2.16	121.40	118.59
2	A	801	7GI	C16-C17-N1	-2.08	117.16	120.89

There are no chirality outliers.

All (4) torsion outliers are listed below:

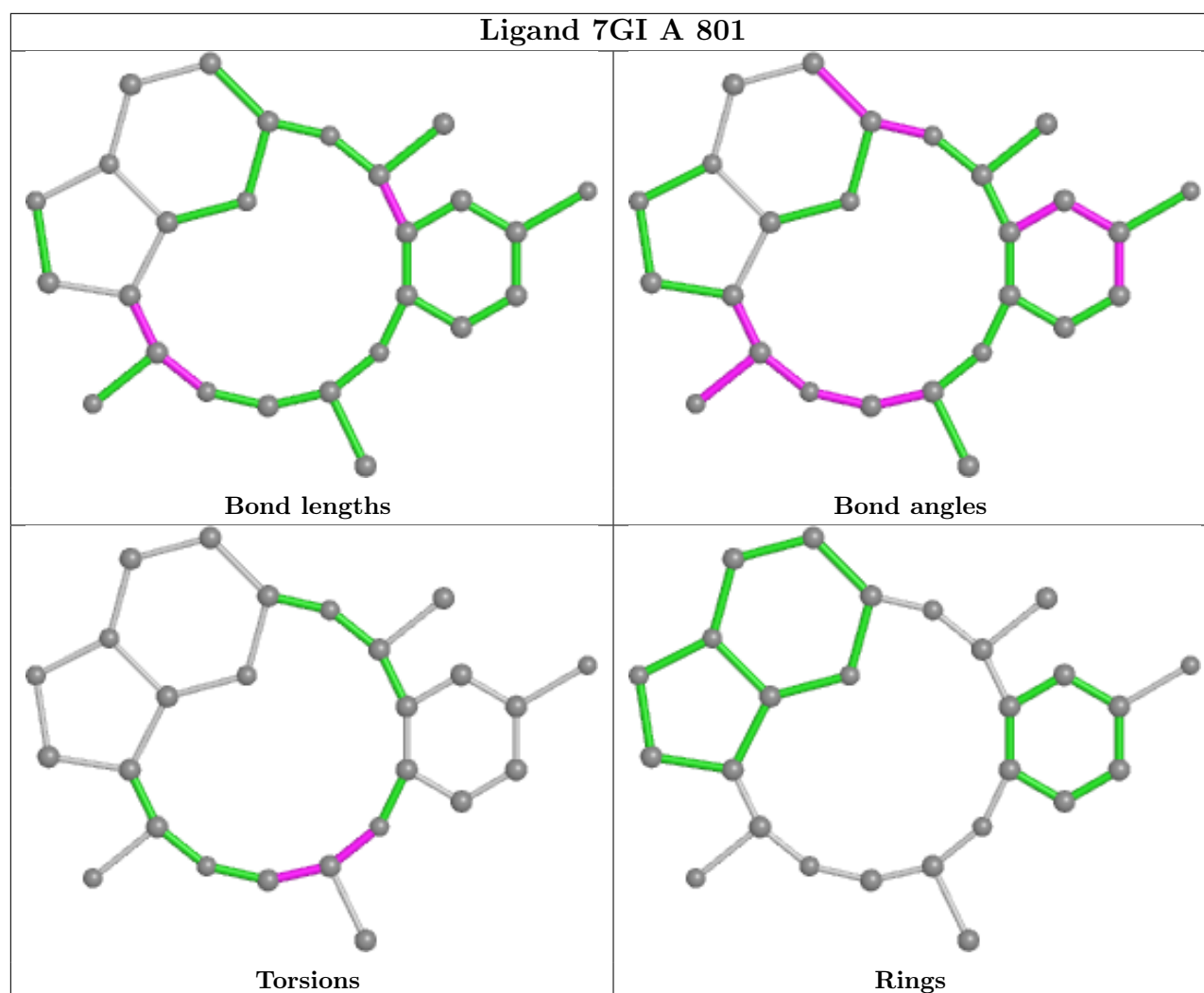
Mol	Chain	Res	Type	Atoms
2	A	801	7GI	N-C1-C2-O1
2	A	801	7GI	N-C1-C2-C3
2	A	801	7GI	C3-C2-O1-C4
2	A	801	7GI	C1-C2-O1-C4

There are no ring outliers.

2 monomers are involved in 2 short contacts:

Mol	Chain	Res	Type	Clashes	Symm-Clashes
2	A	801	7GI	1	0
3	A	803	SO4	1	0

The following is a two-dimensional graphical depiction of Mogul quality analysis of bond lengths, bond angles, torsion angles, and ring geometry for all instances of the Ligand of Interest. In addition, ligands with molecular weight > 250 and outliers as shown on the validation Tables will also be included. For torsion angles, if less than 5% of the Mogul distribution of torsion angles is within 10 degrees of the torsion angle in question, then that torsion angle is considered an outlier. Any bond that is central to one or more torsion angles identified as an outlier by Mogul will be highlighted in the graph. For rings, the root-mean-square deviation (RMSD) between the ring in question and similar rings identified by Mogul is calculated over all ring torsion angles. If the average RMSD is greater than 60 degrees and the minimal RMSD between the ring in question and any Mogul-identified rings is also greater than 60 degrees, then that ring is considered an outlier. The outliers are highlighted in purple. The color gray indicates Mogul did not find sufficient equivalents in the CSD to analyse the geometry.



## 5.7 Other polymers [i](#)

There are no such residues in this entry.

## 5.8 Polymer linkage issues [i](#)

There are no chain breaks in this entry.



## 6 Fit of model and data [i](#)

### 6.1 Protein, DNA and RNA chains [i](#)

In the following table, the column labelled ‘#RSRZ> 2’ contains the number (and percentage) of RSRZ outliers, followed by percent RSRZ outliers for the chain as percentile scores relative to all X-ray entries and entries of similar resolution. The OWAB column contains the minimum, median, 95<sup>th</sup> percentile and maximum values of the occupancy-weighted average B-factor per residue. The column labelled ‘Q< 0.9’ lists the number of (and percentage) of residues with an average occupancy less than 0.9.

Mol	Chain	Analysed	<RSRZ>	#RSRZ>2	OWAB(Å <sup>2</sup> )	Q<0.9
1	A	297/326 (91%)	0.07	8 (2%) 54 50	56, 94, 160, 185	0

All (8) RSRZ outliers are listed below:

Mol	Chain	Res	Type	RSRZ
1	A	609	LYS	7.2
1	A	792	LEU	3.7
1	A	532	LEU	3.5
1	A	671	MET	3.4
1	A	791	TYR	2.8
1	A	521	PHE	2.8
1	A	676	TYR	2.6
1	A	534	PRO	2.1

### 6.2 Non-standard residues in protein, DNA, RNA chains [i](#)

There are no non-standard protein/DNA/RNA residues in this entry.

### 6.3 Carbohydrates [i](#)

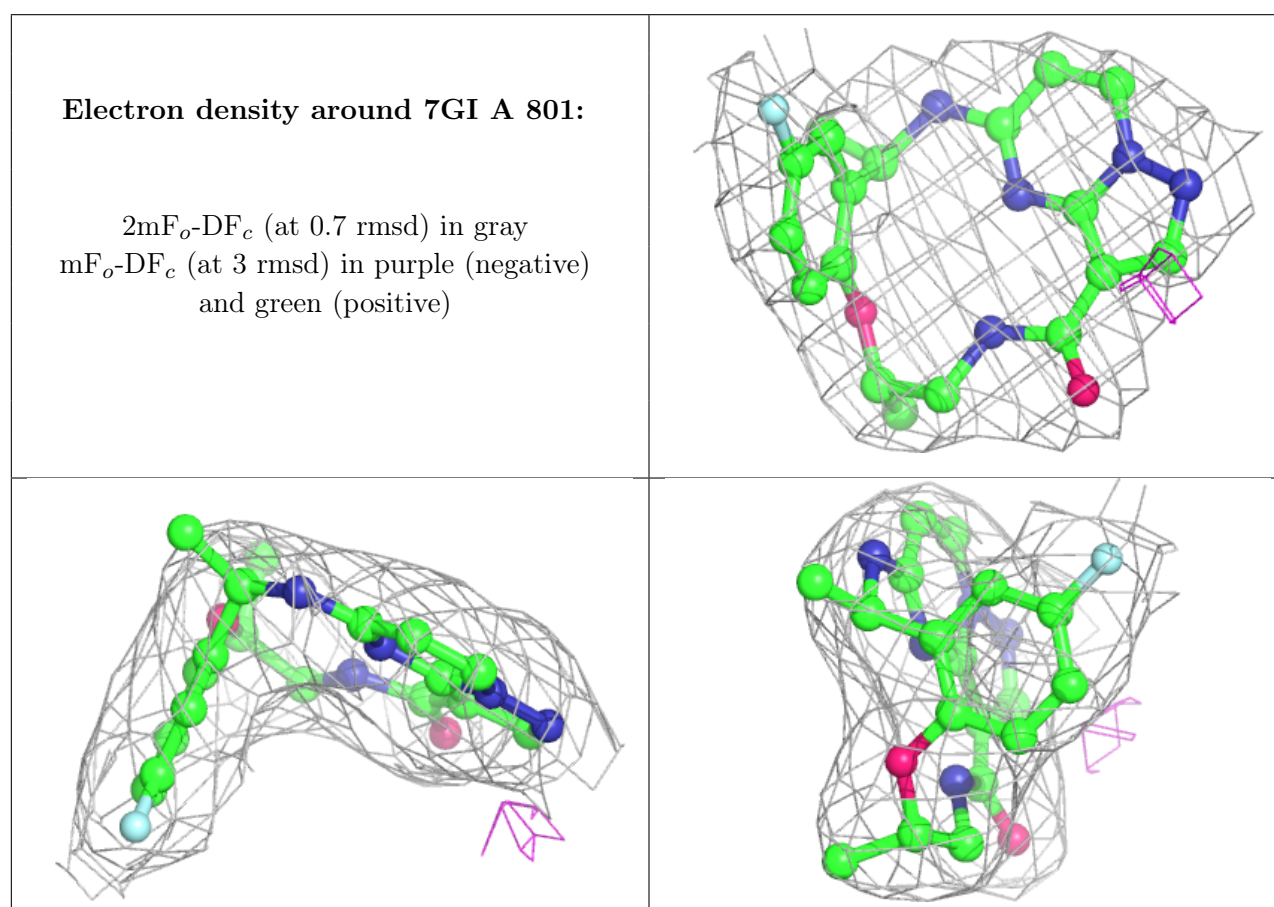
There are no monosaccharides in this entry.

### 6.4 Ligands [i](#)

In the following table, the Atoms column lists the number of modelled atoms in the group and the number defined in the chemical component dictionary. The B-factors column lists the minimum, median, 95<sup>th</sup> percentile and maximum values of B factors of atoms in the group. The column labelled ‘Q< 0.9’ lists the number of atoms with occupancy less than 0.9.

Mol	Type	Chain	Res	Atoms	RSCC	RSR	B-factors( $\text{\AA}^2$ )	Q<0.9
3	SO4	A	802	5/5	0.72	0.41	129,159,178,215	0
3	SO4	A	804	5/5	0.77	0.28	156,162,190,213	0
3	SO4	A	806	5/5	0.81	0.21	168,172,176,176	0
3	SO4	A	805	5/5	0.83	0.19	176,186,196,204	0
3	SO4	A	803	5/5	0.83	0.24	143,153,173,194	0
2	7GI	A	801	26/26	0.98	0.16	66,72,77,83	0

The following is a graphical depiction of the model fit to experimental electron density of all instances of the Ligand of Interest. In addition, ligands with molecular weight > 250 and outliers as shown on the geometry validation Tables will also be included. Each fit is shown from different orientation to approximate a three-dimensional view.



## 6.5 Other polymers ⓘ

There are no such residues in this entry.