



# Full wwPDB X-ray Structure Validation Report ⓘ

Aug 22, 2020 – 09:54 PM BST

PDB ID : 6VLY  
Title : Crystal structure of FabI-NADH complex from *Alistipes finegoldii*  
Authors : Radka, C.D.; Seetharaman, J.; Rock, C.O.  
Deposited on : 2020-01-27  
Resolution : 1.86 Å(reported)

This is a Full wwPDB X-ray Structure Validation Report for a publicly released PDB entry.

We welcome your comments at [validation@mail.wwpdb.org](mailto:validation@mail.wwpdb.org)

A user guide is available at

<https://www.wwpdb.org/validation/2017/XrayValidationReportHelp>

with specific help available everywhere you see the ⓘ symbol.

---

The following versions of software and data (see [references ⓘ](#)) were used in the production of this report:

MolProbity : 4.02b-467  
Mogul : 1.8.5 (274361), CSD as541be (2020)  
Xtriage (Phenix) : 1.13  
EDS : 2.13.1  
buster-report : 1.1.7 (2018)  
Percentile statistics : 20191225.v01 (using entries in the PDB archive December 25th 2019)  
Refmac : 5.8.0158  
CCP4 : 7.0.044 (Gargrove)  
Ideal geometry (proteins) : Engh & Huber (2001)  
Ideal geometry (DNA, RNA) : Parkinson et al. (1996)  
Validation Pipeline (wwPDB-VP) : 2.13.1

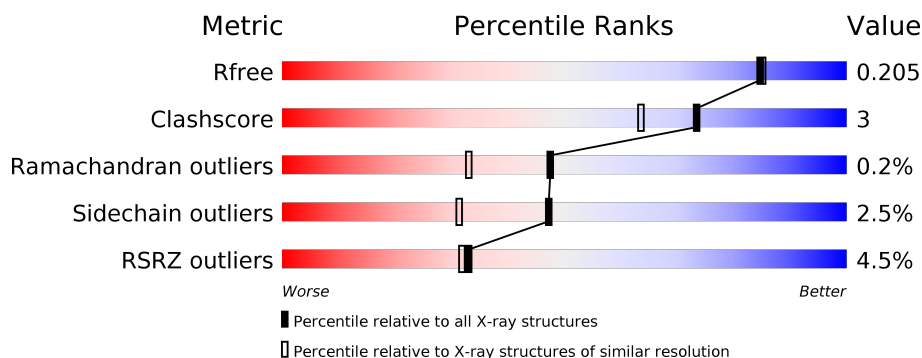
# 1 Overall quality at a glance

The following experimental techniques were used to determine the structure:

## *X-RAY DIFFRACTION*

The reported resolution of this entry is 1.86 Å.

Percentile scores (ranging between 0-100) for global validation metrics of the entry are shown in the following graphic. The table shows the number of entries on which the scores are based.



Metric	Whole archive (#Entries)	Similar resolution (#Entries, resolution range(Å))
$R_{free}$	130704	2469 (1.86-1.86)
Clashscore	141614	2625 (1.86-1.86)
Ramachandran outliers	138981	2592 (1.86-1.86)
Sidechain outliers	138945	2592 (1.86-1.86)
RSRZ outliers	127900	2436 (1.86-1.86)

The table below summarises the geometric issues observed across the polymeric chains and their fit to the electron density. The red, orange, yellow and green segments on the lower bar indicate the fraction of residues that contain outliers for  $\geq 3$ , 2, 1 and 0 types of geometric quality criteria respectively. A grey segment represents the fraction of residues that are not modelled. The numeric value for each fraction is indicated below the corresponding segment, with a dot representing fractions  $\leq 5\%$ . The upper red bar (where present) indicates the fraction of residues that have poor fit to the electron density. The numeric value is given above the bar.

Mol	Chain	Length	Quality of chain
1	A	309	<div> <div>8%</div> <div> <div></div> <div>83%</div> <div>11%</div> <div>• 5%</div> </div> </div>
1	B	309	<div> <div>2%</div> <div> <div></div> <div>83%</div> <div>9%</div> <div>8%</div> </div> </div>
1	C	309	<div> <div>5%</div> <div> <div></div> <div>85%</div> <div>6%</div> <div>8%</div> </div> </div>
1	D	309	<div> <div>2%</div> <div> <div></div> <div>85%</div> <div>7%</div> <div>8%</div> </div> </div>

## 2 Entry composition

There are 5 unique types of molecules in this entry. The entry contains 10132 atoms, of which 0 are hydrogens and 0 are deuteriums.

In the tables below, the ZeroOcc column contains the number of atoms modelled with zero occupancy, the AltConf column contains the number of residues with at least one atom in alternate conformation and the Trace column contains the number of residues modelled with at most 2 atoms.

- Molecule 1 is a protein called Enoyl-[acyl-carrier-protein] reductase [NADH].

Mol	Chain	Residues	Atoms					ZeroOcc	AltConf	Trace
1	A	293	Total	C	N	O	S	0	0	0
			2265	1423	393	433	16			
1	B	284	Total	C	N	O	S	0	0	0
			2202	1384	379	424	15			
1	C	283	Total	C	N	O	S	0	0	0
			2193	1379	378	421	15			
1	D	284	Total	C	N	O	S	0	0	0
			2202	1384	379	424	15			

There are 80 discrepancies between the modelled and reference sequences:

Chain	Residue	Modelled	Actual	Comment	Reference
A	-19	MET	-	initiating methionine	UNP A0A174E195
A	-18	GLY	-	expression tag	UNP A0A174E195
A	-17	SER	-	expression tag	UNP A0A174E195
A	-16	SER	-	expression tag	UNP A0A174E195
A	-15	HIS	-	expression tag	UNP A0A174E195
A	-14	HIS	-	expression tag	UNP A0A174E195
A	-13	HIS	-	expression tag	UNP A0A174E195
A	-12	HIS	-	expression tag	UNP A0A174E195
A	-11	HIS	-	expression tag	UNP A0A174E195
A	-10	HIS	-	expression tag	UNP A0A174E195
A	-9	SER	-	expression tag	UNP A0A174E195
A	-8	SER	-	expression tag	UNP A0A174E195
A	-7	GLY	-	expression tag	UNP A0A174E195
A	-6	LEU	-	expression tag	UNP A0A174E195
A	-5	VAL	-	expression tag	UNP A0A174E195
A	-4	PRO	-	expression tag	UNP A0A174E195
A	-3	ARG	-	expression tag	UNP A0A174E195
A	-2	GLY	-	expression tag	UNP A0A174E195
A	-1	SER	-	expression tag	UNP A0A174E195
A	0	HIS	-	expression tag	UNP A0A174E195
B	-19	MET	-	initiating methionine	UNP A0A174E195

*Continued on next page...*

*Continued from previous page...*

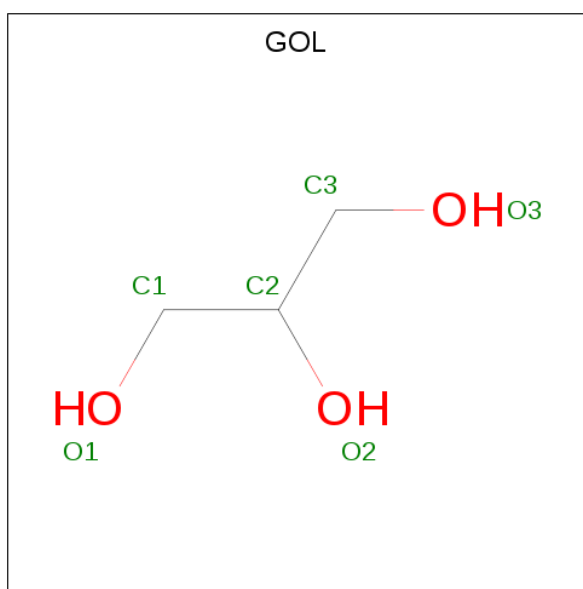
Chain	Residue	Modelled	Actual	Comment	Reference
B	-18	GLY	-	expression tag	UNP A0A174E195
B	-17	SER	-	expression tag	UNP A0A174E195
B	-16	SER	-	expression tag	UNP A0A174E195
B	-15	HIS	-	expression tag	UNP A0A174E195
B	-14	HIS	-	expression tag	UNP A0A174E195
B	-13	HIS	-	expression tag	UNP A0A174E195
B	-12	HIS	-	expression tag	UNP A0A174E195
B	-11	HIS	-	expression tag	UNP A0A174E195
B	-10	HIS	-	expression tag	UNP A0A174E195
B	-9	SER	-	expression tag	UNP A0A174E195
B	-8	SER	-	expression tag	UNP A0A174E195
B	-7	GLY	-	expression tag	UNP A0A174E195
B	-6	LEU	-	expression tag	UNP A0A174E195
B	-5	VAL	-	expression tag	UNP A0A174E195
B	-4	PRO	-	expression tag	UNP A0A174E195
B	-3	ARG	-	expression tag	UNP A0A174E195
B	-2	GLY	-	expression tag	UNP A0A174E195
B	-1	SER	-	expression tag	UNP A0A174E195
B	0	HIS	-	expression tag	UNP A0A174E195
C	-19	MET	-	initiating methionine	UNP A0A174E195
C	-18	GLY	-	expression tag	UNP A0A174E195
C	-17	SER	-	expression tag	UNP A0A174E195
C	-16	SER	-	expression tag	UNP A0A174E195
C	-15	HIS	-	expression tag	UNP A0A174E195
C	-14	HIS	-	expression tag	UNP A0A174E195
C	-13	HIS	-	expression tag	UNP A0A174E195
C	-12	HIS	-	expression tag	UNP A0A174E195
C	-11	HIS	-	expression tag	UNP A0A174E195
C	-10	HIS	-	expression tag	UNP A0A174E195
C	-9	SER	-	expression tag	UNP A0A174E195
C	-8	SER	-	expression tag	UNP A0A174E195
C	-7	GLY	-	expression tag	UNP A0A174E195
C	-6	LEU	-	expression tag	UNP A0A174E195
C	-5	VAL	-	expression tag	UNP A0A174E195
C	-4	PRO	-	expression tag	UNP A0A174E195
C	-3	ARG	-	expression tag	UNP A0A174E195
C	-2	GLY	-	expression tag	UNP A0A174E195
C	-1	SER	-	expression tag	UNP A0A174E195
C	0	HIS	-	expression tag	UNP A0A174E195
D	-19	MET	-	initiating methionine	UNP A0A174E195
D	-18	GLY	-	expression tag	UNP A0A174E195
D	-17	SER	-	expression tag	UNP A0A174E195

*Continued on next page...*

Continued from previous page...

Chain	Residue	Modelled	Actual	Comment	Reference
D	-16	SER	-	expression tag	UNP A0A174E195
D	-15	HIS	-	expression tag	UNP A0A174E195
D	-14	HIS	-	expression tag	UNP A0A174E195
D	-13	HIS	-	expression tag	UNP A0A174E195
D	-12	HIS	-	expression tag	UNP A0A174E195
D	-11	HIS	-	expression tag	UNP A0A174E195
D	-10	HIS	-	expression tag	UNP A0A174E195
D	-9	SER	-	expression tag	UNP A0A174E195
D	-8	SER	-	expression tag	UNP A0A174E195
D	-7	GLY	-	expression tag	UNP A0A174E195
D	-6	LEU	-	expression tag	UNP A0A174E195
D	-5	VAL	-	expression tag	UNP A0A174E195
D	-4	PRO	-	expression tag	UNP A0A174E195
D	-3	ARG	-	expression tag	UNP A0A174E195
D	-2	GLY	-	expression tag	UNP A0A174E195
D	-1	SER	-	expression tag	UNP A0A174E195
D	0	HIS	-	expression tag	UNP A0A174E195

- Molecule 2 is GLYCEROL (three-letter code: GOL) (formula: C<sub>3</sub>H<sub>8</sub>O<sub>3</sub>).



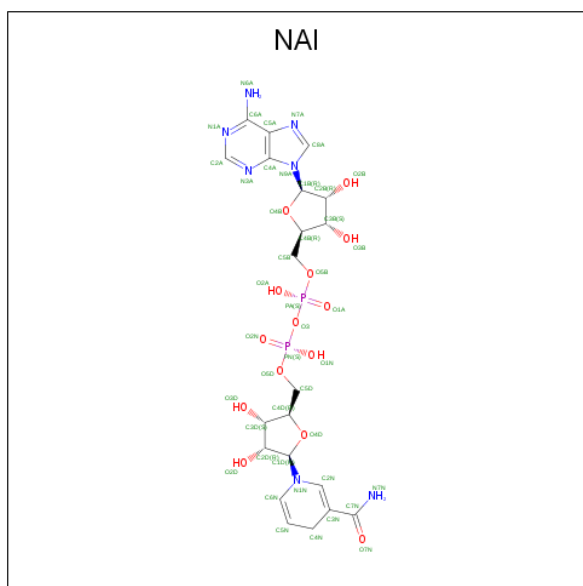
Mol	Chain	Residues	Atoms			ZeroOcc	AltConf
2	A	1	Total	C	O	0	0
			6	3	3		
2	B	1	Total	C	O	0	0
			6	3	3		
2	B	1	Total	C	O	0	0
			6	3	3		

Continued on next page...

Continued from previous page...

Mol	Chain	Residues	Atoms			ZeroOcc	AltConf
2	B	1	Total	C	O	0	0
			6	3	3		
2	C	1	Total	C	O	0	0
			6	3	3		
2	C	1	Total	C	O	0	0
			6	3	3		
2	D	1	Total	C	O	0	0
			6	3	3		
2	D	1	Total	C	O	0	0
			6	3	3		

- Molecule 3 is 1,4-DIHYDRONICOTINAMIDE ADENINE DINUCLEOTIDE (three-letter code: NAI) (formula:  $C_{21}H_{29}N_7O_{14}P_2$ ) (labeled as "Ligand of Interest" by author).



Mol	Chain	Residues	Atoms					ZeroOcc	AltConf
3	A	1	Total 44	C 21	N 7	O 14	P 2	0	0
3	B	1	Total 44	C 21	N 7	O 14	P 2	0	0
3	C	1	Total 44	C 21	N 7	O 14	P 2	0	0
3	D	1	Total 44	C 21	N 7	O 14	P 2	0	0

- Molecule 4 is CHLORIDE ION (three-letter code: CL) (formula: Cl).

Mol	Chain	Residues	Atoms		ZeroOcc	AltConf
4	B	1	Total	Cl	0	0
			1	1		

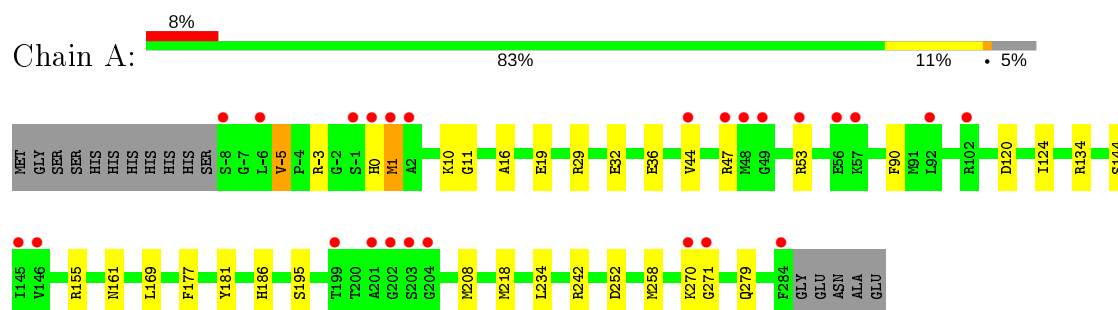
- Molecule 5 is water.

Mol	Chain	Residues	Atoms		ZeroOcc	AltConf
5	A	246	Total	O	0	0
			246	246		
5	B	262	Total	O	0	0
			262	262		
5	C	269	Total	O	0	0
			269	269		
5	D	268	Total	O	0	0
			268	268		

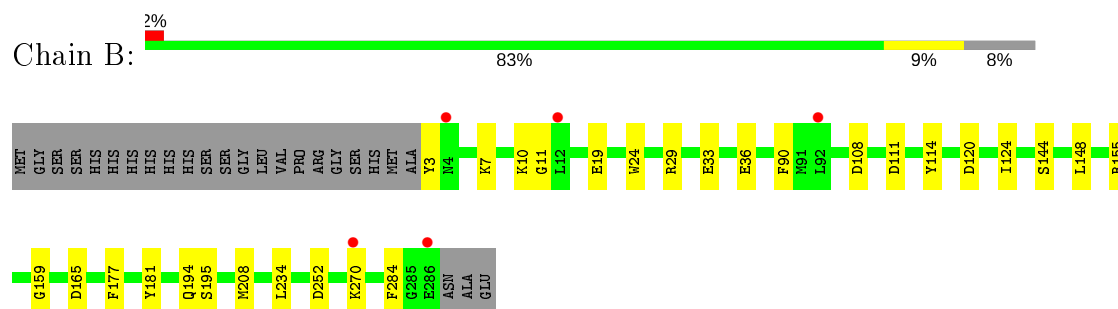
### 3 Residue-property plots [i](#)

These plots are drawn for all protein, RNA, DNA and oligosaccharide chains in the entry. The first graphic for a chain summarises the proportions of the various outlier classes displayed in the second graphic. The second graphic shows the sequence view annotated by issues in geometry and electron density. Residues are color-coded according to the number of geometric quality criteria for which they contain at least one outlier: green = 0, yellow = 1, orange = 2 and red = 3 or more. A red dot above a residue indicates a poor fit to the electron density ( $RSRZ > 2$ ). Stretches of 2 or more consecutive residues without any outlier are shown as a green connector. Residues present in the sample, but not in the model, are shown in grey.

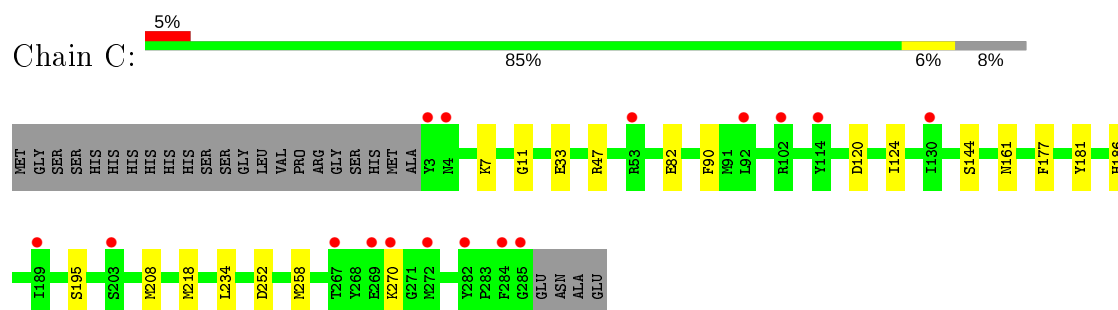
- Molecule 1: Enoyl-[acyl-carrier-protein] reductase [NADH]



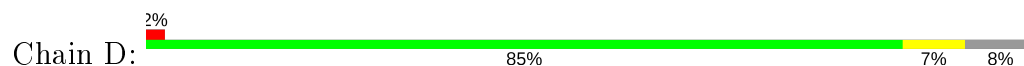
- Molecule 1: Enoyl-[acyl-carrier-protein] reductase [NADH]



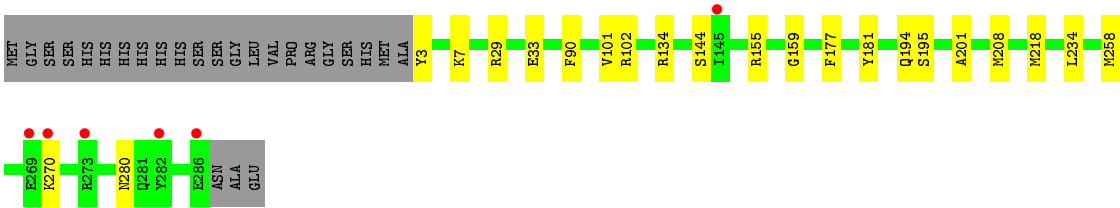
- Molecule 1: Enoyl-[acyl-carrier-protein] reductase [NADH]



- Molecule 1: Enoyl-[acyl-carrier-protein] reductase [NADH]







## 4 Data and refinement statistics

Property	Value	Source
Space group	P 21 21 21	Depositor
Cell constants a, b, c, $\alpha$ , $\beta$ , $\gamma$	75.31Å 111.54Å 150.54Å 90.00° 90.00° 90.00°	Depositor
Resolution (Å)	29.09 – 1.86 29.08 – 1.86	Depositor EDS
% Data completeness (in resolution range)	98.3 (29.09-1.86) 98.3 (29.08-1.86)	Depositor EDS
$R_{merge}$	(Not available)	Depositor
$R_{sym}$	(Not available)	Depositor
$\langle I/\sigma(I) \rangle$ <sup>1</sup>	1.02 (at 1.85Å)	Xtriage
Refinement program	REFMAC 5.8.0258	Depositor
R, $R_{free}$	0.158 , 0.197 0.170 , 0.205	Depositor DCC
$R_{free}$ test set	5169 reflections (4.91%)	wwPDB-VP
Wilson B-factor (Å <sup>2</sup> )	24.7	Xtriage
Anisotropy	0.101	Xtriage
Bulk solvent $k_{sol}$ (e/Å <sup>3</sup> ), $B_{sol}$ (Å <sup>2</sup> )	0.36 , 55.3	EDS
L-test for twinning <sup>2</sup>	$\langle  L  \rangle = 0.50$ , $\langle L^2 \rangle = 0.34$	Xtriage
Estimated twinning fraction	No twinning to report.	Xtriage
$F_o, F_c$ correlation	0.97	EDS
Total number of atoms	10132	wwPDB-VP
Average B, all atoms (Å <sup>2</sup> )	25.0	wwPDB-VP

Xtriage's analysis on translational NCS is as follows: *The largest off-origin peak in the Patterson function is 4.19% of the height of the origin peak. No significant pseudotranslation is detected.*

<sup>1</sup>Intensities estimated from amplitudes.

<sup>2</sup>Theoretical values of  $\langle |L| \rangle$ ,  $\langle L^2 \rangle$  for acentric reflections are 0.5, 0.333 respectively for untwinned datasets, and 0.375, 0.2 for perfectly twinned datasets.

## 5 Model quality [i](#)

### 5.1 Standard geometry [i](#)

Bond lengths and bond angles in the following residue types are not validated in this section: GOL, NAI, CL

The Z score for a bond length (or angle) is the number of standard deviations the observed value is removed from the expected value. A bond length (or angle) with  $|Z| > 5$  is considered an outlier worth inspection. RMSZ is the root-mean-square of all Z scores of the bond lengths (or angles).

Mol	Chain	Bond lengths		Bond angles	
		RMSZ	$\# Z  > 5$	RMSZ	$\# Z  > 5$
1	A	0.73	0/2306	0.72	0/3109
1	B	0.75	0/2241	0.72	0/3021
1	C	0.75	0/2232	0.73	0/3009
1	D	0.73	0/2241	0.74	0/3021
All	All	0.74	0/9020	0.72	0/12160

There are no bond length outliers.

There are no bond angle outliers.

There are no chirality outliers.

There are no planarity outliers.

### 5.2 Too-close contacts [i](#)

In the following table, the Non-H and H(model) columns list the number of non-hydrogen atoms and hydrogen atoms in the chain respectively. The H(added) column lists the number of hydrogen atoms added and optimized by MolProbity. The Clashes column lists the number of clashes within the asymmetric unit, whereas Symm-Clashes lists symmetry related clashes.

Mol	Chain	Non-H	H(model)	H(added)	Clashes	Symm-Clashes
1	A	2265	0	2242	19	0
1	B	2202	0	2171	16	0
1	C	2193	0	2165	10	0
1	D	2202	0	2171	14	0
2	A	6	0	8	0	0
2	B	18	0	24	3	0
2	C	12	0	16	0	0
2	D	12	0	16	5	0
3	A	44	0	27	0	0

*Continued on next page...*

*Continued from previous page...*

Mol	Chain	Non-H	H(model)	H(added)	Clashes	Symm-Clashes
3	B	44	0	27	0	0
3	C	44	0	27	0	0
3	D	44	0	27	0	0
4	B	1	0	0	0	0
5	A	246	0	0	6	0
5	B	262	0	0	3	0
5	C	269	0	0	4	0
5	D	268	0	0	7	0
All	All	10132	0	8921	60	0

The all-atom clashscore is defined as the number of clashes found per 1000 atoms (including hydrogen atoms). The all-atom clashscore for this structure is 3.

All (60) close contacts within the same asymmetric unit are listed below, sorted by their clash magnitude.

Atom-1	Atom-2	Interatomic distance (Å)	Clash overlap (Å)
1:D:280:ASN:HB2	5:D:595:HOH:O	1.70	0.92
1:A:1:MET:HE3	5:A:452:HOH:O	1.83	0.78
1:D:102:ARG:NH2	5:D:401:HOH:O	2.20	0.74
1:A:186:HIS:HD2	5:A:519:HOH:O	1.73	0.69
1:B:3:TYR:N	5:B:402:HOH:O	2.28	0.66
1:B:155:ARG:NH2	5:B:401:HOH:O	2.28	0.66
1:D:3:TYR:N	5:D:403:HOH:O	2.29	0.64
1:A:155:ARG:NH2	5:A:402:HOH:O	2.34	0.59
1:D:155:ARG:NH2	5:D:404:HOH:O	2.35	0.59
1:B:270:LYS:HE3	1:B:284:PHE:O	2.02	0.58
1:D:159:GLY:H	2:D:302:GOL:H2	1.67	0.57
1:B:29:ARG:HB3	1:B:234:LEU:HD11	1.85	0.57
1:D:29:ARG:HB3	1:D:234:LEU:HD11	1.88	0.55
1:C:47:ARG:NH1	5:C:402:HOH:O	2.32	0.55
1:D:218:MET:O	1:D:258:MET:HG3	2.08	0.54
1:B:11:GLY:HA3	1:B:90:PHE:CE1	2.44	0.52
2:B:302:GOL:H12	5:B:590:HOH:O	2.08	0.52
1:A:29:ARG:HB3	1:A:234:LEU:HD11	1.92	0.52
1:A:16:ALA:N	5:A:404:HOH:O	2.43	0.51
1:C:186:HIS:HD2	5:C:405:HOH:O	1.94	0.49
1:A:218:MET:O	1:A:258:MET:HG3	2.12	0.49
1:C:47:ARG:HD3	5:C:631:HOH:O	2.12	0.49
1:A:11:GLY:HA3	1:A:90:PHE:CE1	2.48	0.48
1:D:101:VAL:HG11	2:D:301:GOL:H32	1.95	0.48
1:A:270:LYS:HD3	1:A:271:GLY:N	2.30	0.46

*Continued on next page...*

*Continued from previous page...*

Atom-1	Atom-2	Interatomic distance (Å)	Clash overlap (Å)
1:A:-5:VAL:HG22	1:A:-3:ARG:NH1	2.30	0.46
1:C:33:GLU:HG3	1:C:234:LEU:HD13	1.98	0.45
1:A:90:PHE:HA	1:A:144:SER:O	2.16	0.45
1:D:33:GLU:HG3	1:D:234:LEU:HD13	1.99	0.44
1:C:11:GLY:HA3	1:C:90:PHE:CE1	2.51	0.44
1:A:44:VAL:HG23	5:A:594:HOH:O	2.17	0.44
1:B:120:ASP:HA	1:B:124:ILE:HB	1.98	0.44
1:D:90:PHE:HA	1:D:144:SER:O	2.18	0.44
1:B:111:ASP:HB3	1:B:114:TYR:CD2	2.53	0.44
1:A:242:ARG:NH1	5:A:405:HOH:O	2.44	0.43
1:A:169:LEU:HD12	1:B:165:ASP:HB3	2.00	0.43
2:B:301:GOL:O2	2:B:302:GOL:O1	2.24	0.43
1:C:218:MET:O	1:C:258:MET:HG3	2.18	0.43
1:A:134:ARG:NH1	1:B:108:ASP:HB2	2.34	0.43
1:C:120:ASP:HA	1:C:124:ILE:HB	2.01	0.42
1:A:10:LYS:HA	1:A:36:GLU:O	2.19	0.42
1:A:0:HIS:HE1	1:A:32:GLU:OE1	2.03	0.42
1:B:90:PHE:HA	1:B:144:SER:O	2.20	0.42
1:C:195:SER:OG	1:C:252:ASP:HA	2.20	0.42
1:D:3:TYR:N	5:D:413:HOH:O	2.52	0.42
1:B:195:SER:OG	1:B:252:ASP:HA	2.20	0.41
1:C:82:GLU:OE1	5:C:401:HOH:O	2.22	0.41
1:B:33:GLU:HG3	1:B:234:LEU:HD13	2.02	0.41
1:D:201:ALA:O	2:D:301:GOL:H31	2.21	0.41
1:D:194:GLN:HG3	1:D:195:SER:O	2.20	0.41
1:B:10:LYS:HA	1:B:36:GLU:O	2.20	0.41
2:D:302:GOL:C1	5:D:402:HOH:O	2.66	0.41
1:A:279:GLN:HG2	1:D:134:ARG:HH12	1.85	0.41
1:A:120:ASP:HA	1:A:124:ILE:HB	2.02	0.40
1:A:195:SER:OG	1:A:252:ASP:HA	2.21	0.40
1:B:19:GLU:HA	1:B:24:TRP:CD2	2.55	0.40
1:B:159:GLY:H	2:B:303:GOL:H2	1.86	0.40
1:C:90:PHE:HA	1:C:144:SER:O	2.20	0.40
1:B:194:GLN:HG3	1:B:195:SER:O	2.21	0.40
2:D:302:GOL:H12	5:D:402:HOH:O	2.22	0.40

There are no symmetry-related clashes.

## 5.3 Torsion angles [i](#)

### 5.3.1 Protein backbone [i](#)

In the following table, the Percentiles column shows the percent Ramachandran outliers of the chain as a percentile score with respect to all X-ray entries followed by that with respect to entries of similar resolution.

The Analysed column shows the number of residues for which the backbone conformation was analysed, and the total number of residues.

Mol	Chain	Analysed	Favoured	Allowed	Outliers	Percentiles	
1	A	291/309 (94%)	279 (96%)	11 (4%)	1 (0%)	41	26
1	B	282/309 (91%)	273 (97%)	9 (3%)	0	100	100
1	C	281/309 (91%)	274 (98%)	6 (2%)	1 (0%)	34	19
1	D	282/309 (91%)	274 (97%)	8 (3%)	0	100	100
All	All	1136/1236 (92%)	1100 (97%)	34 (3%)	2 (0%)	47	33

All (2) Ramachandran outliers are listed below:

Mol	Chain	Res	Type
1	A	161	ASN
1	C	161	ASN

### 5.3.2 Protein sidechains [i](#)

In the following table, the Percentiles column shows the percent sidechain outliers of the chain as a percentile score with respect to all X-ray entries followed by that with respect to entries of similar resolution.

The Analysed column shows the number of residues for which the sidechain conformation was analysed, and the total number of residues.

Mol	Chain	Analysed	Rotameric	Outliers	Percentiles	
1	A	240/253 (95%)	232 (97%)	8 (3%)	38	21
1	B	233/253 (92%)	228 (98%)	5 (2%)	53	38
1	C	232/253 (92%)	227 (98%)	5 (2%)	52	36
1	D	233/253 (92%)	228 (98%)	5 (2%)	53	38
All	All	938/1012 (93%)	915 (98%)	23 (2%)	47	31

All (23) residues with a non-rotameric sidechain are listed below:

Mol	Chain	Res	Type
1	A	-5	VAL
1	A	1	MET
1	A	19	GLU
1	A	47	ARG
1	A	53	ARG
1	A	177	PHE
1	A	181	TYR
1	A	208	MET
1	B	7	LYS
1	B	148	LEU
1	B	177	PHE
1	B	181	TYR
1	B	208	MET
1	C	7	LYS
1	C	177	PHE
1	C	181	TYR
1	C	208	MET
1	C	270	LYS
1	D	7	LYS
1	D	177	PHE
1	D	181	TYR
1	D	208	MET
1	D	270	LYS

Some sidechains can be flipped to improve hydrogen bonding and reduce clashes. All (3) such sidechains are listed below:

Mol	Chain	Res	Type
1	A	0	HIS
1	C	186	HIS
1	C	213	ASN

### 5.3.3 RNA ⓘ

There are no RNA molecules in this entry.

## 5.4 Non-standard residues in protein, DNA, RNA chains ⓘ

There are no non-standard protein/DNA/RNA residues in this entry.

## 5.5 Carbohydrates [i](#)

There are no monosaccharides in this entry.

## 5.6 Ligand geometry [i](#)

Of 13 ligands modelled in this entry, 1 is monoatomic - leaving 12 for Mogul analysis.

In the following table, the Counts columns list the number of bonds (or angles) for which Mogul statistics could be retrieved, the number of bonds (or angles) that are observed in the model and the number of bonds (or angles) that are defined in the Chemical Component Dictionary. The Link column lists molecule types, if any, to which the group is linked. The Z score for a bond length (or angle) is the number of standard deviations the observed value is removed from the expected value. A bond length (or angle) with  $|Z| > 2$  is considered an outlier worth inspection. RMSZ is the root-mean-square of all Z scores of the bond lengths (or angles).

Mol	Type	Chain	Res	Link	Bond lengths			Bond angles		
					Counts	RMSZ	# Z  > 2	Counts	RMSZ	# Z  > 2
3	NAI	C	303	-	42,48,48	1.03	2 (4%)	47,73,73	1.34	6 (12%)
2	GOL	B	302	-	5,5,5	0.30	0	5,5,5	0.47	0
2	GOL	D	302	-	5,5,5	0.29	0	5,5,5	0.99	0
2	GOL	B	301	-	5,5,5	0.11	0	5,5,5	0.25	0
2	GOL	A	301	-	5,5,5	0.19	0	5,5,5	0.56	0
2	GOL	D	301	-	5,5,5	0.43	0	5,5,5	0.55	0
2	GOL	C	301	-	5,5,5	0.18	0	5,5,5	0.40	0
3	NAI	A	302	-	42,48,48	1.07	3 (7%)	47,73,73	1.37	6 (12%)
2	GOL	C	302	-	5,5,5	0.22	0	5,5,5	0.78	0
3	NAI	B	304	-	42,48,48	0.92	2 (4%)	47,73,73	1.39	6 (12%)
3	NAI	D	303	-	42,48,48	1.03	2 (4%)	47,73,73	1.36	7 (14%)
2	GOL	B	303	-	5,5,5	0.23	0	5,5,5	0.74	0

In the following table, the Chirals column lists the number of chiral outliers, the number of chiral centers analysed, the number of these observed in the model and the number defined in the Chemical Component Dictionary. Similar counts are reported in the Torsion and Rings columns. '-' means no outliers of that kind were identified.

Mol	Type	Chain	Res	Link	Chirals	Torsions	Rings
3	NAI	C	303	-	-	7/25/72/72	0/5/5/5
2	GOL	B	302	-	-	1/4/4/4	-
2	GOL	D	302	-	-	2/4/4/4	-
2	GOL	B	301	-	-	0/4/4/4	-
2	GOL	A	301	-	-	2/4/4/4	-
2	GOL	D	301	-	-	2/4/4/4	-

*Continued on next page...*



*Continued from previous page...*

Mol	Type	Chain	Res	Link	Chirals	Torsions	Rings
2	GOL	C	301	-	-	2/4/4/4	-
3	NAI	A	302	-	-	6/25/72/72	0/5/5/5
2	GOL	C	302	-	-	2/4/4/4	-
3	NAI	B	304	-	-	7/25/72/72	0/5/5/5
3	NAI	D	303	-	-	8/25/72/72	0/5/5/5
2	GOL	B	303	-	-	2/4/4/4	-

All (9) bond length outliers are listed below:

Mol	Chain	Res	Type	Atoms	Z	Observed(Å)	Ideal(Å)
3	A	302	NAI	C6N-C5N	3.53	1.39	1.33
3	D	303	NAI	C6N-C5N	2.95	1.38	1.33
3	C	303	NAI	C6N-C5N	2.62	1.38	1.33
3	B	304	NAI	C4N-C5N	-2.45	1.42	1.48
3	A	302	NAI	C2A-N3A	2.38	1.35	1.32
3	A	302	NAI	O4B-C1B	2.37	1.44	1.41
3	C	303	NAI	C5A-C4A	2.26	1.46	1.40
3	D	303	NAI	C2A-N3A	2.25	1.35	1.32
3	B	304	NAI	C6N-C5N	2.03	1.37	1.33

All (25) bond angle outliers are listed below:

Mol	Chain	Res	Type	Atoms	Z	Observed(°)	Ideal(°)
3	A	302	NAI	N3A-C2A-N1A	-4.50	121.64	128.68
3	B	304	NAI	C4A-C5A-N7A	-4.18	105.05	109.40
3	C	303	NAI	O4D-C1D-N1N	3.38	114.66	108.06
3	B	304	NAI	O4B-C1B-C2B	-3.27	102.15	106.93
3	C	303	NAI	N3A-C2A-N1A	-3.17	123.73	128.68
3	D	303	NAI	N3A-C2A-N1A	-3.09	123.86	128.68
3	D	303	NAI	O4B-C1B-C2B	-2.98	102.57	106.93
3	B	304	NAI	O4D-C1D-N1N	2.93	113.78	108.06
3	C	303	NAI	C3D-C2D-C1D	-2.91	95.89	101.43
3	B	304	NAI	N3A-C2A-N1A	-2.78	124.34	128.68
3	D	303	NAI	O4D-C1D-N1N	2.64	113.21	108.06
3	D	303	NAI	C1B-N9A-C4A	-2.56	122.14	126.64
3	A	302	NAI	PN-O3-PA	-2.52	124.18	132.83
3	C	303	NAI	C1B-N9A-C4A	-2.42	122.39	126.64
3	D	303	NAI	C3N-C7N-N7N	2.31	121.76	117.67
3	C	303	NAI	C2A-N1A-C6A	2.29	122.67	118.75
3	D	303	NAI	O2A-PA-O1A	2.19	123.05	112.24
3	B	304	NAI	C5A-C6A-N6A	2.19	123.67	120.35

*Continued on next page...*

*Continued from previous page...*

Mol	Chain	Res	Type	Atoms	Z	Observed(°)	Ideal(°)
3	A	302	NAI	C1B-N9A-C4A	-2.17	122.82	126.64
3	B	304	NAI	O7N-C7N-C3N	-2.14	116.87	120.90
3	A	302	NAI	C2A-N1A-C6A	2.12	122.37	118.75
3	A	302	NAI	O4B-C1B-C2B	-2.10	103.85	106.93
3	C	303	NAI	O2A-PA-O1A	2.09	122.59	112.24
3	A	302	NAI	O4D-C1D-C2D	-2.03	102.20	106.64
3	D	303	NAI	C3D-C2D-C1D	-2.03	97.57	101.43

There are no chirality outliers.

All (41) torsion outliers are listed below:

Mol	Chain	Res	Type	Atoms
3	C	303	NAI	PN-O3-PA-O5B
3	C	303	NAI	C5D-O5D-PN-O3
3	C	303	NAI	C5D-O5D-PN-O1N
3	C	303	NAI	C5D-O5D-PN-O2N
2	D	302	GOL	C1-C2-C3-O3
2	D	302	GOL	O2-C2-C3-O3
2	A	301	GOL	C1-C2-C3-O3
2	D	301	GOL	C1-C2-C3-O3
2	C	301	GOL	C1-C2-C3-O3
3	A	302	NAI	PN-O3-PA-O5B
3	A	302	NAI	C5D-O5D-PN-O3
3	A	302	NAI	C5D-O5D-PN-O1N
2	C	302	GOL	C1-C2-C3-O3
3	B	304	NAI	PN-O3-PA-O5B
3	B	304	NAI	C5D-O5D-PN-O3
3	B	304	NAI	C5D-O5D-PN-O1N
3	B	304	NAI	C5D-O5D-PN-O2N
3	D	303	NAI	C5D-O5D-PN-O3
3	D	303	NAI	C5D-O5D-PN-O1N
3	D	303	NAI	C5D-O5D-PN-O2N
2	B	303	GOL	C1-C2-C3-O3
2	B	303	GOL	O2-C2-C3-O3
2	C	302	GOL	O2-C2-C3-O3
2	A	301	GOL	O2-C2-C3-O3
2	D	301	GOL	O2-C2-C3-O3
2	C	301	GOL	O2-C2-C3-O3
3	D	303	NAI	PN-O3-PA-O5B
3	D	303	NAI	O4D-C1D-N1N-C6N
3	A	302	NAI	O4D-C1D-N1N-C6N
3	A	302	NAI	C2D-C1D-N1N-C6N

*Continued on next page...*

*Continued from previous page...*

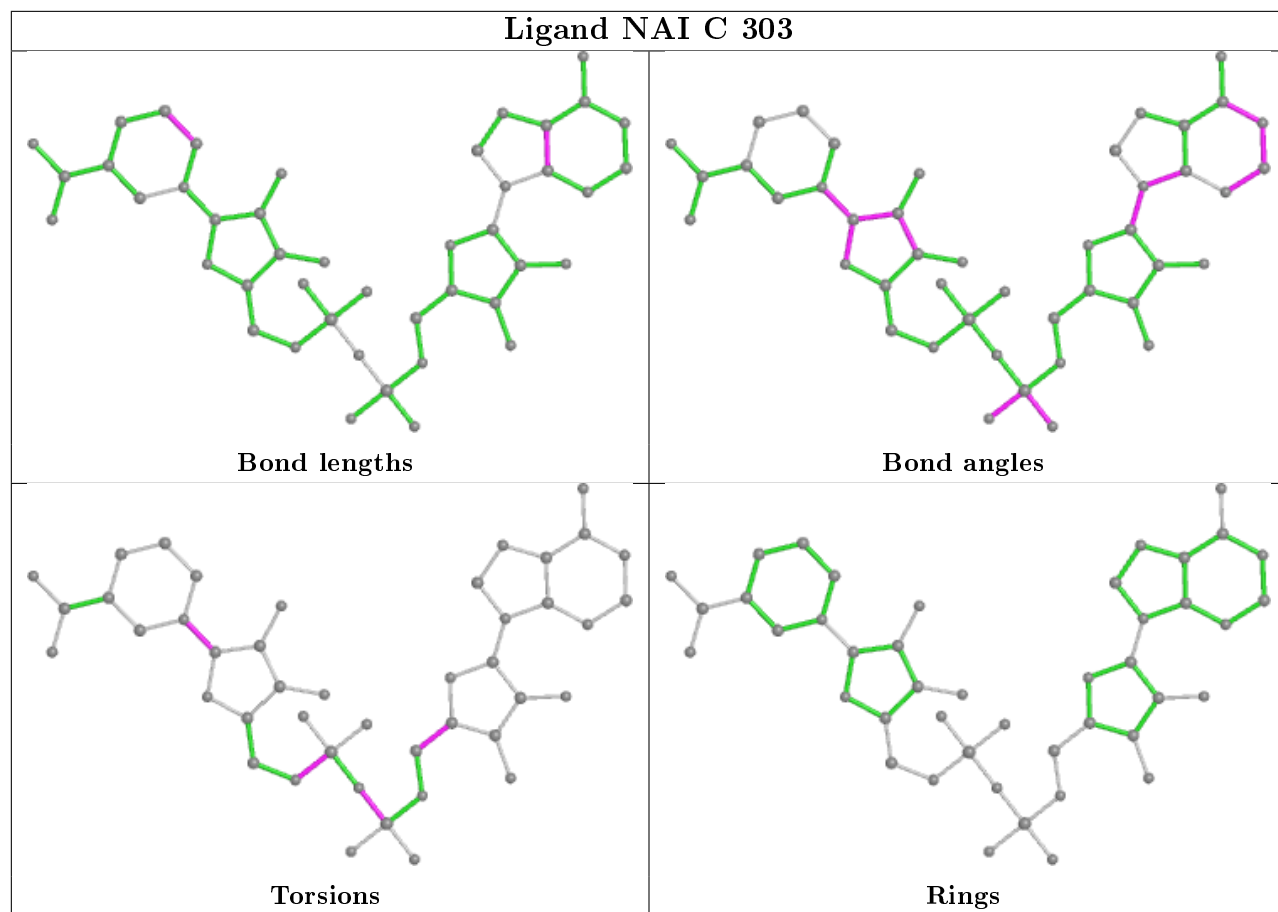
Mol	Chain	Res	Type	Atoms
3	C	303	NAI	O4D-C1D-N1N-C6N
3	B	304	NAI	O4D-C1D-N1N-C6N
3	B	304	NAI	C2D-C1D-N1N-C6N
3	C	303	NAI	C2D-C1D-N1N-C6N
3	D	303	NAI	C2D-C1D-N1N-C6N
2	B	302	GOL	O1-C1-C2-O2
3	C	303	NAI	O4B-C4B-C5B-O5B
3	A	302	NAI	O4B-C4B-C5B-O5B
3	B	304	NAI	O4B-C4B-C5B-O5B
3	D	303	NAI	O4B-C4B-C5B-O5B
3	D	303	NAI	O4D-C1D-N1N-C2N

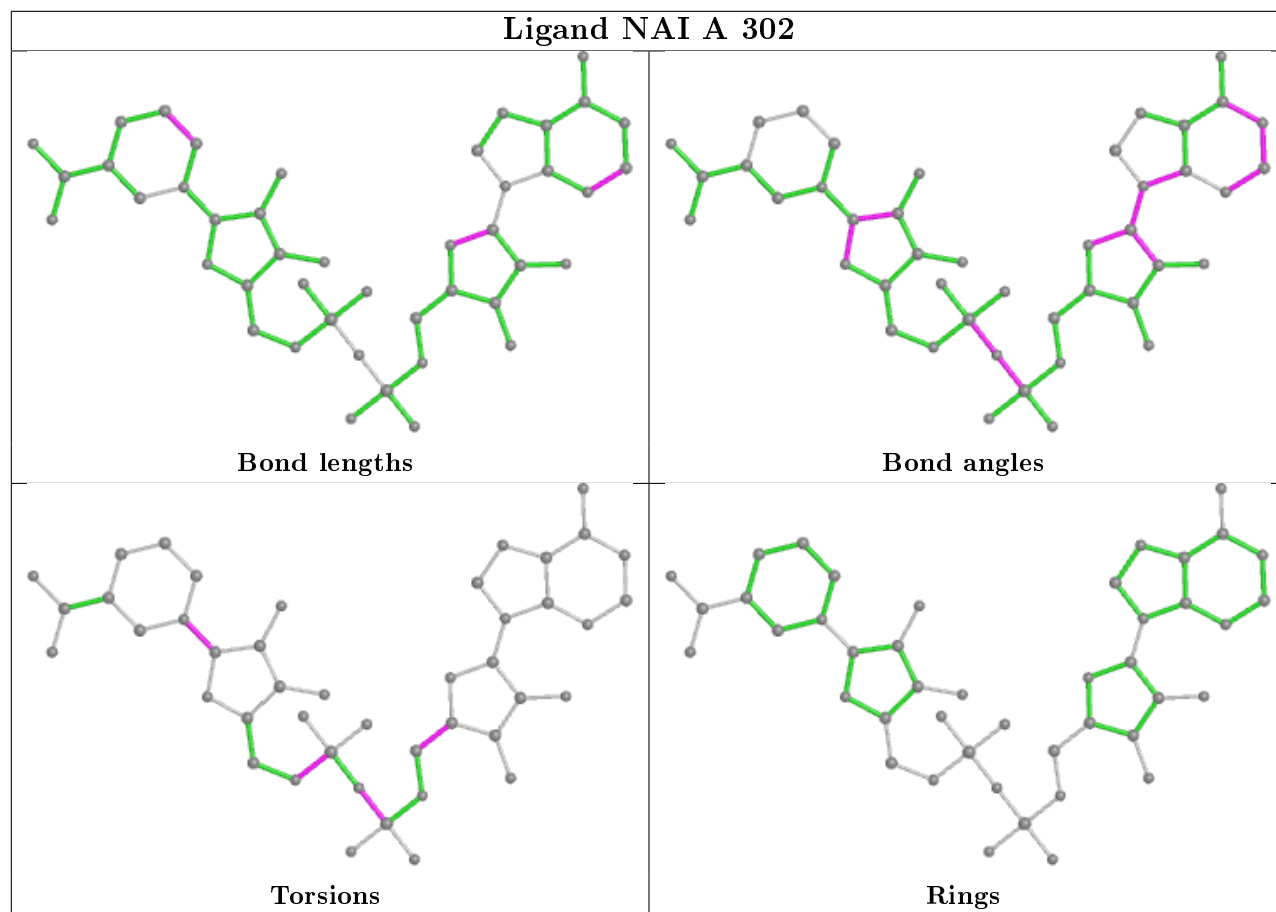
There are no ring outliers.

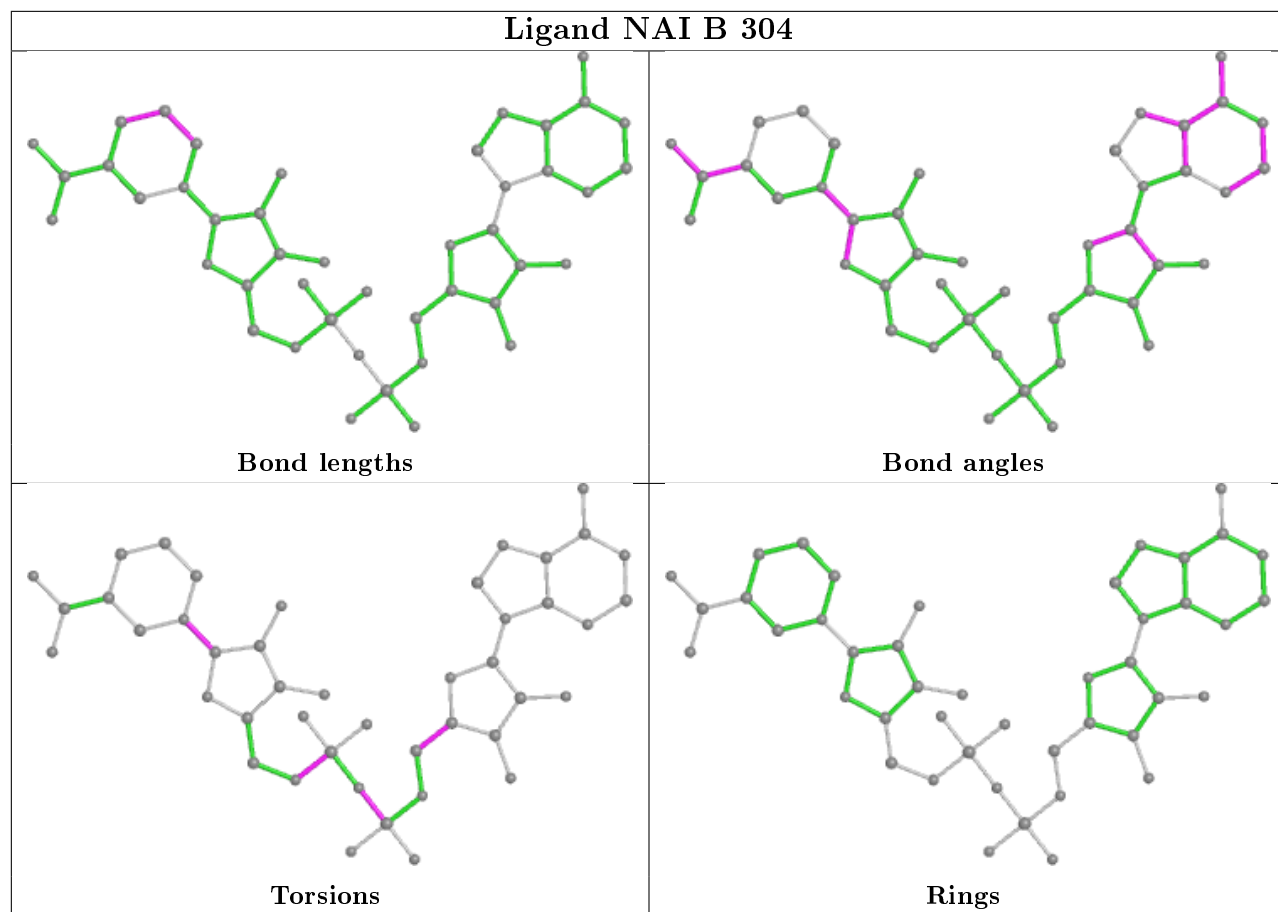
5 monomers are involved in 8 short contacts:

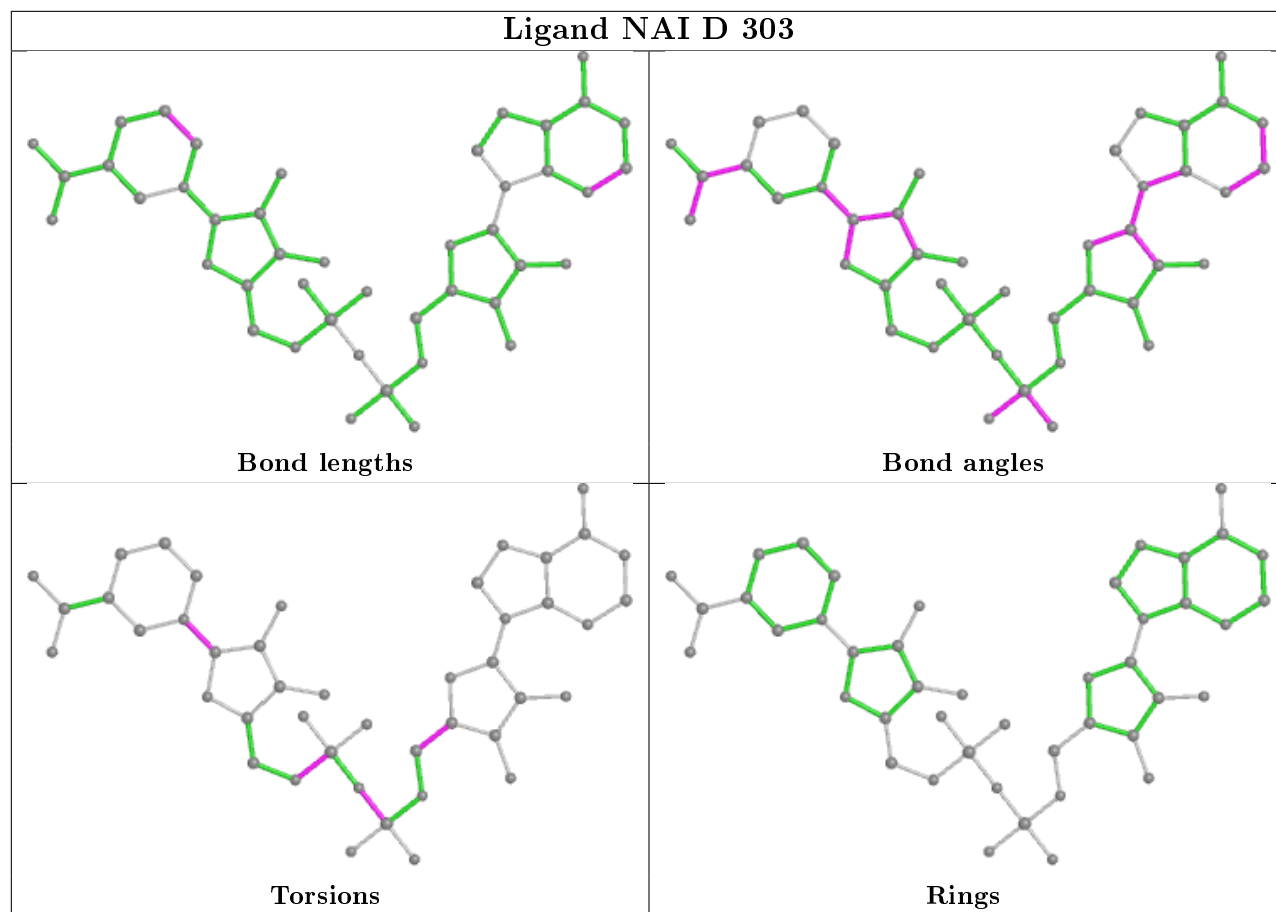
Mol	Chain	Res	Type	Clashes	Symm-Clashes
2	B	302	GOL	2	0
2	D	302	GOL	3	0
2	B	301	GOL	1	0
2	D	301	GOL	2	0
2	B	303	GOL	1	0

The following is a two-dimensional graphical depiction of Mogul quality analysis of bond lengths, bond angles, torsion angles, and ring geometry for all instances of the Ligand of Interest. In addition, ligands with molecular weight > 250 and outliers as shown on the validation Tables will also be included. For torsion angles, if less than 5% of the Mogul distribution of torsion angles is within 10 degrees of the torsion angle in question, then that torsion angle is considered an outlier. Any bond that is central to one or more torsion angles identified as an outlier by Mogul will be highlighted in the graph. For rings, the root-mean-square deviation (RMSD) between the ring in question and similar rings identified by Mogul is calculated over all ring torsion angles. If the average RMSD is greater than 60 degrees and the minimal RMSD between the ring in question and any Mogul-identified rings is also greater than 60 degrees, then that ring is considered an outlier. The outliers are highlighted in purple. The color gray indicates Mogul did not find sufficient equivalents in the CSD to analyse the geometry.









## 5.7 Other polymers [i](#)

There are no such residues in this entry.

## 5.8 Polymer linkage issues [i](#)

There are no chain breaks in this entry.

## 6 Fit of model and data ⓘ

### 6.1 Protein, DNA and RNA chains ⓘ

In the following table, the column labelled ‘#RSRZ> 2’ contains the number (and percentage) of RSRZ outliers, followed by percent RSRZ outliers for the chain as percentile scores relative to all X-ray entries and entries of similar resolution. The OWAB column contains the minimum, median, 95<sup>th</sup> percentile and maximum values of the occupancy-weighted average B-factor per residue. The column labelled ‘Q< 0.9’ lists the number of (and percentage) of residues with an average occupancy less than 0.9.

Mol	Chain	Analysed	<RSRZ>	#RSRZ>2	OWAB(Å <sup>2</sup> )	Q<0.9
1	A	293/309 (94%)	0.43	25 (8%) 10 10	16, 25, 45, 75	0
1	B	284/309 (91%)	0.03	5 (1%) 68 68	15, 21, 36, 53	0
1	C	283/309 (91%)	0.23	16 (5%) 23 23	15, 22, 41, 61	0
1	D	284/309 (91%)	0.01	6 (2%) 63 63	14, 20, 36, 61	0
All	All	1144/1236 (92%)	0.18	52 (4%) 33 32	14, 22, 40, 75	0

All (52) RSRZ outliers are listed below:

Mol	Chain	Res	Type	RSRZ
1	A	48	MET	6.0
1	C	285	GLY	5.1
1	A	0	HIS	4.8
1	A	-8	SER	4.5
1	A	1	MET	4.3
1	A	49	GLY	4.2
1	A	47	ARG	4.1
1	C	284	PHE	3.6
1	A	270	LYS	3.3
1	D	286	GLU	3.2
1	A	204	GLY	3.0
1	A	44	VAL	3.0
1	C	270	LYS	2.9
1	D	270	LYS	2.8
1	A	203	SER	2.8
1	A	92	LEU	2.7
1	B	12	LEU	2.7
1	C	269	GLU	2.6
1	C	267	THR	2.6
1	A	145	ILE	2.6
1	D	269	GLU	2.5

*Continued on next page...*



*Continued from previous page...*

Mol	Chain	Res	Type	RSRZ
1	C	92	LEU	2.5
1	B	4	ASN	2.5
1	C	102	ARG	2.5
1	C	282	TYR	2.4
1	B	92	LEU	2.4
1	A	57	LYS	2.4
1	A	53	ARG	2.3
1	C	53	ARG	2.3
1	B	286	GLU	2.3
1	A	284	PHE	2.3
1	C	114	TYR	2.3
1	C	130	ILE	2.2
1	A	2	ALA	2.2
1	A	271	GLY	2.2
1	C	189	ILE	2.2
1	B	270	LYS	2.1
1	A	102	ARG	2.1
1	D	145	ILE	2.1
1	A	56	GLU	2.1
1	C	272	MET	2.1
1	A	-1	SER	2.1
1	A	202	GLY	2.1
1	C	203	SER	2.1
1	C	4	ASN	2.1
1	D	282	TYR	2.1
1	A	201	ALA	2.0
1	A	-6	LEU	2.0
1	C	3	TYR	2.0
1	A	146	VAL	2.0
1	D	273	ARG	2.0
1	A	199	THR	2.0

## 6.2 Non-standard residues in protein, DNA, RNA chains [i](#)

There are no non-standard protein/DNA/RNA residues in this entry.

## 6.3 Carbohydrates [i](#)

There are no monosaccharides in this entry.

## 6.4 Ligands

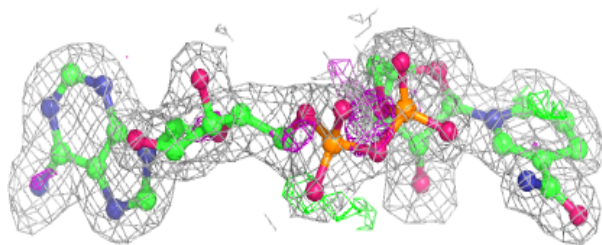
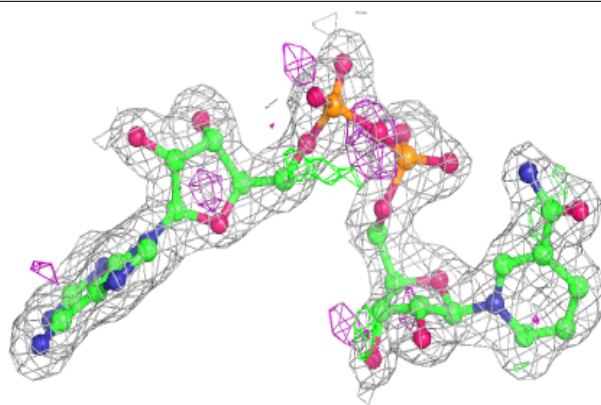
In the following table, the Atoms column lists the number of modelled atoms in the group and the number defined in the chemical component dictionary. The B-factors column lists the minimum, median, 95<sup>th</sup> percentile and maximum values of B factors of atoms in the group. The column labelled 'Q< 0.9' lists the number of atoms with occupancy less than 0.9.

Mol	Type	Chain	Res	Atoms	RSCC	RSR	B-factors(Å <sup>2</sup> )	Q<0.9
2	GOL	D	301	6/6	0.74	0.21	31,41,42,45	0
2	GOL	C	301	6/6	0.82	0.14	32,41,42,46	0
2	GOL	B	302	6/6	0.86	0.17	21,24,36,45	0
2	GOL	B	303	6/6	0.86	0.23	22,26,33,36	0
2	GOL	A	301	6/6	0.87	0.20	26,31,35,39	0
2	GOL	C	302	6/6	0.88	0.22	22,27,35,36	0
2	GOL	D	302	6/6	0.91	0.16	18,22,25,28	0
3	NAI	A	302	44/44	0.91	0.14	26,32,35,39	0
3	NAI	C	303	44/44	0.95	0.10	20,25,30,34	0
2	GOL	B	301	6/6	0.96	0.09	22,26,27,34	0
3	NAI	D	303	44/44	0.97	0.08	16,18,19,20	0
3	NAI	B	304	44/44	0.97	0.08	16,19,21,22	0
4	CL	B	305	1/1	1.00	0.08	21,21,21,21	0

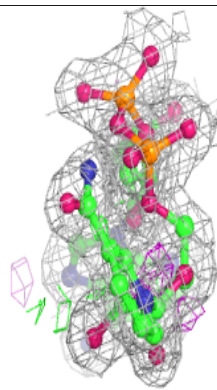
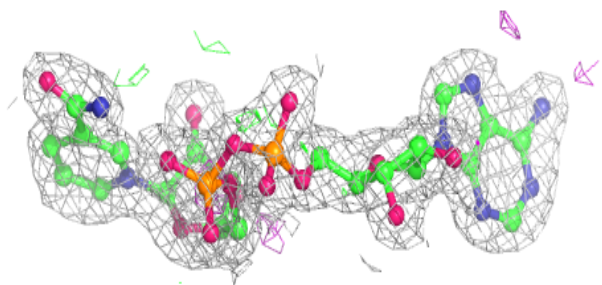
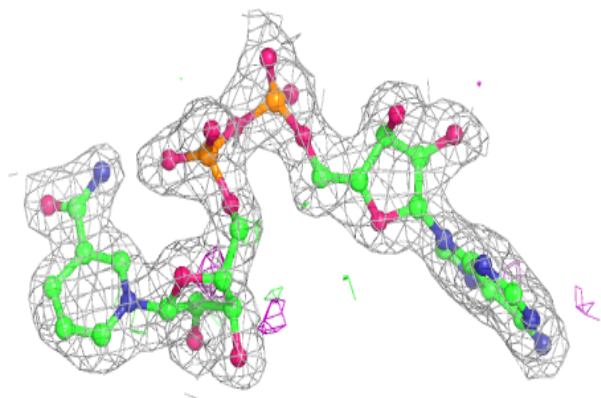
The following is a graphical depiction of the model fit to experimental electron density of all instances of the Ligand of Interest. In addition, ligands with molecular weight > 250 and outliers as shown on the geometry validation Tables will also be included. Each fit is shown from different orientation to approximate a three-dimensional view.

**Electron density around NAI A 302:**

$2mF_o-DF_c$  (at 0.7 rmsd) in gray  
 $mF_o-DF_c$  (at 3 rmsd) in purple (negative)  
and green (positive)

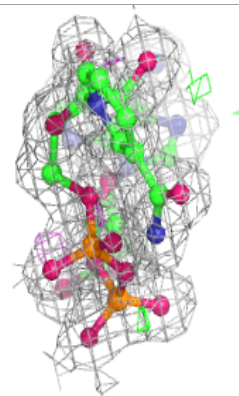
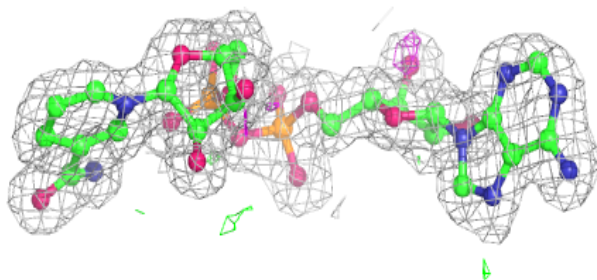
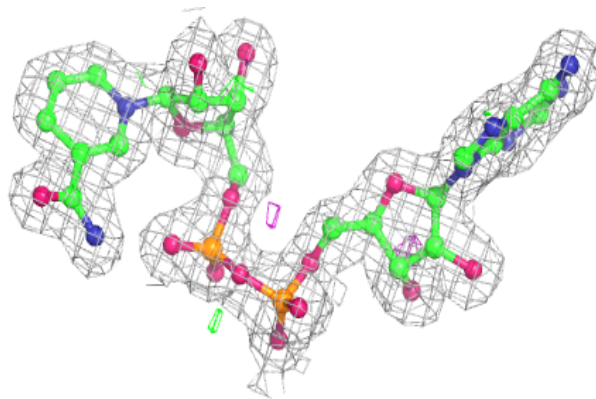
**Electron density around NAI C 303:**

$2mF_o-DF_c$  (at 0.7 rmsd) in gray  
 $mF_o-DF_c$  (at 3 rmsd) in purple (negative)  
and green (positive)

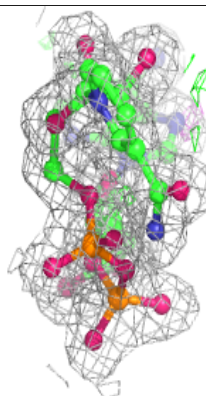
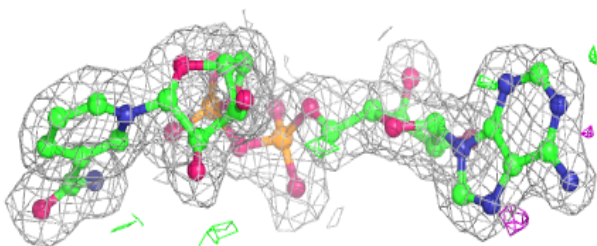
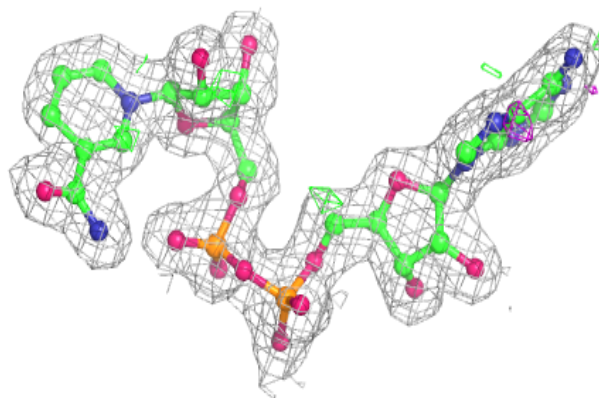


**Electron density around NAI D 303:**

$2mF_o-DF_c$  (at 0.7 rmsd) in gray  
 $mF_o-DF_c$  (at 3 rmsd) in purple (negative)  
and green (positive)

**Electron density around NAI B 304:**

$2mF_o-DF_c$  (at 0.7 rmsd) in gray  
 $mF_o-DF_c$  (at 3 rmsd) in purple (negative)  
and green (positive)



## 6.5 Other polymers [i](#)

There are no such residues in this entry.