



Full wwPDB X-ray Structure Validation Report ⓘ

May 15, 2020 – 08:07 pm BST

PDB ID : 3VML
Title : Chimera 3-isopropylmalate dehydrogenase between *Shewanella oneidensis* MR-1 (O) and *Shewanella benthica* DB21 MT-2 (M) from N-terminal: 20% O middle 70% M residual 10% O
Authors : Nagae, T.; Watanabe, N.
Deposited on : 2011-12-13
Resolution : 1.56 Å(reported)

This is a Full wwPDB X-ray Structure Validation Report for a publicly released PDB entry.

We welcome your comments at validation@mail.wwpdb.org

A user guide is available at

<https://www.wwpdb.org/validation/2017/XrayValidationReportHelp>

with specific help available everywhere you see the ⓘ symbol.

The following versions of software and data (see [references ⓘ](#)) were used in the production of this report:

MolProbity : 4.02b-467
Mogul : 1.8.5 (274361), CSD as541be (2020)
Xtriage (Phenix) : 1.13
EDS : 2.11
Percentile statistics : 20191225.v01 (using entries in the PDB archive December 25th 2019)
Refmac : 5.8.0158
CCP4 : 7.0.044 (Gargrove)
Ideal geometry (proteins) : Engh & Huber (2001)
Ideal geometry (DNA, RNA) : Parkinson et al. (1996)
Validation Pipeline (wwPDB-VP) : 2.11

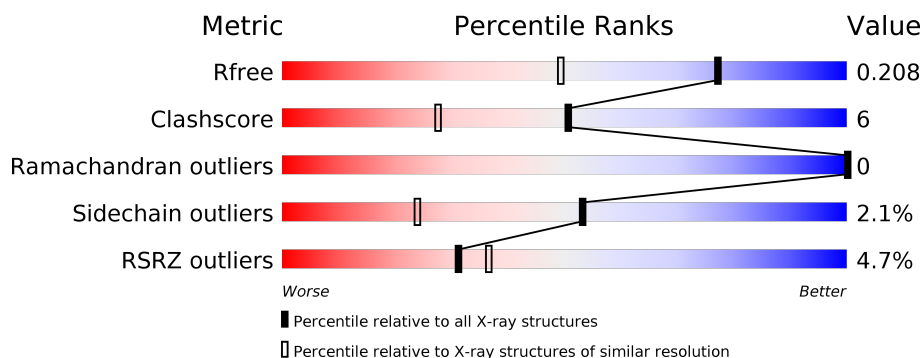
1 Overall quality at a glance

The following experimental techniques were used to determine the structure:

X-RAY DIFFRACTION

The reported resolution of this entry is 1.56 Å.

Percentile scores (ranging between 0-100) for global validation metrics of the entry are shown in the following graphic. The table shows the number of entries on which the scores are based.



Metric	Whole archive (#Entries)	Similar resolution (#Entries, resolution range(Å))
R_{free}	130704	1483 (1.56-1.56)
Clashscore	141614	1529 (1.56-1.56)
Ramachandran outliers	138981	1498 (1.56-1.56)
Sidechain outliers	138945	1495 (1.56-1.56)
RSRZ outliers	127900	1465 (1.56-1.56)

The table below summarises the geometric issues observed across the polymeric chains and their fit to the electron density. The red, orange, yellow and green segments on the lower bar indicate the fraction of residues that contain outliers for ≥ 3 , 2, 1 and 0 types of geometric quality criteria respectively. A grey segment represents the fraction of residues that are not modelled. The numeric value for each fraction is indicated below the corresponding segment, with a dot representing fractions $\leq 5\%$. The upper red bar (where present) indicates the fraction of residues that have poor fit to the electron density. The numeric value is given above the bar.

Mol	Chain	Length	Quality of chain
1	A	375	<div> <div>5%</div> <div>82%</div> <div>14%</div> <div>••</div> </div>

2 Entry composition

There are 5 unique types of molecules in this entry. The entry contains 3280 atoms, of which 0 are hydrogens and 0 are deuteriums.

In the tables below, the ZeroOcc column contains the number of atoms modelled with zero occupancy, the AltConf column contains the number of residues with at least one atom in alternate conformation and the Trace column contains the number of residues modelled with at most 2 atoms.

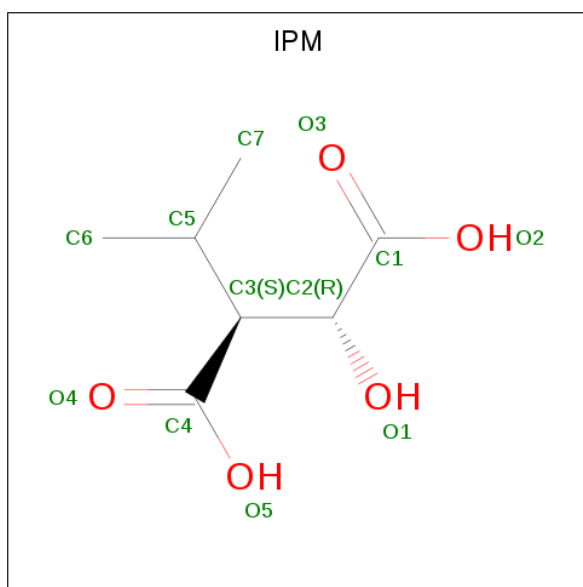
- Molecule 1 is a protein called 3-isopropylmalate dehydrogenase.

Mol	Chain	Residues	Atoms					ZeroOcc	AltConf	Trace
			Total	C	N	O	S			
1	A	363	2794	1762	480	531	21	0	10	0

There are 12 discrepancies between the modelled and reference sequences:

Chain	Residue	Modelled	Actual	Comment	Reference
A	-10	MET	-	EXPRESSION TAG	UNP Q8E9N3
A	-9	ARG	-	EXPRESSION TAG	UNP Q8E9N3
A	-8	GLY	-	EXPRESSION TAG	UNP Q8E9N3
A	-7	SER	-	EXPRESSION TAG	UNP Q8E9N3
A	-6	HIS	-	EXPRESSION TAG	UNP Q8E9N3
A	-5	HIS	-	EXPRESSION TAG	UNP Q8E9N3
A	-4	HIS	-	EXPRESSION TAG	UNP Q8E9N3
A	-3	HIS	-	EXPRESSION TAG	UNP Q8E9N3
A	-2	HIS	-	EXPRESSION TAG	UNP Q8E9N3
A	-1	HIS	-	EXPRESSION TAG	UNP Q8E9N3
A	0	GLY	-	EXPRESSION TAG	UNP Q8E9N3
A	1	SER	-	EXPRESSION TAG	UNP Q8E9N3

- Molecule 2 is 3-ISOPROPYLMALIC ACID (three-letter code: IPM) (formula: C₇H₁₂O₅).



Mol	Chain	Residues	Atoms			ZeroOcc	AltConf
2	A	1	Total	C	O	0	0
			12	7	5		

- Molecule 3 is MAGNESIUM ION (three-letter code: MG) (formula: Mg).

Mol	Chain	Residues	Atoms		ZeroOcc	AltConf
3	A	1	Total	Mg	0	0
			1	1		

- Molecule 4 is CHLORIDE ION (three-letter code: CL) (formula: Cl).

Mol	Chain	Residues	Atoms		ZeroOcc	AltConf
4	A	1	Total	Cl	0	0
			1	1		

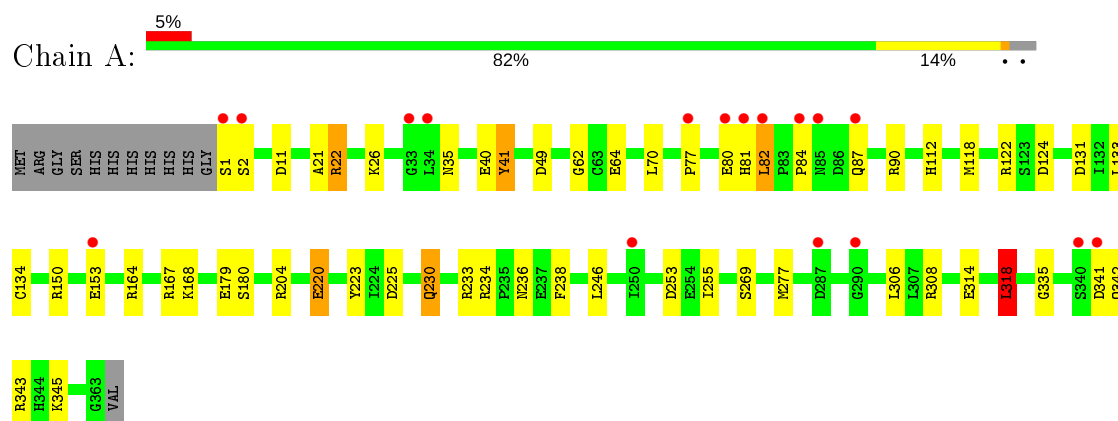
- Molecule 5 is water.

Mol	Chain	Residues	Atoms		ZeroOcc	AltConf
5	A	472	Total	O	0	0
			472	472		

3 Residue-property plots [i](#)

These plots are drawn for all protein, RNA and DNA chains in the entry. The first graphic for a chain summarises the proportions of the various outlier classes displayed in the second graphic. The second graphic shows the sequence view annotated by issues in geometry and electron density. Residues are color-coded according to the number of geometric quality criteria for which they contain at least one outlier: green = 0, yellow = 1, orange = 2 and red = 3 or more. A red dot above a residue indicates a poor fit to the electron density ($RSRZ > 2$). Stretches of 2 or more consecutive residues without any outlier are shown as a green connector. Residues present in the sample, but not in the model, are shown in grey.

- Molecule 1: 3-isopropylmalate dehydrogenase



4 Data and refinement statistics

Property	Value	Source
Space group	C 2 2 21	Depositor
Cell constants a, b, c, α , β , γ	89.01Å 107.52Å 83.11Å 90.00° 90.00° 90.00°	Depositor
Resolution (Å)	33.25 – 1.56 33.25 – 1.56	Depositor EDS
% Data completeness (in resolution range)	98.3 (33.25-1.56) 98.4 (33.25-1.56)	Depositor EDS
R_{merge}	0.07	Depositor
R_{sym}	(Not available)	Depositor
$\langle I/\sigma(I) \rangle$ ¹	3.40 (at 1.56Å)	Xtriage
Refinement program	REFMAC 5.5.0109	Depositor
R, R_{free}	0.177 , 0.209 0.176 , 0.208	Depositor DCC
R_{free} test set	2830 reflections (5.05%)	wwPDB-VP
Wilson B-factor (Å ²)	14.3	Xtriage
Anisotropy	0.548	Xtriage
Bulk solvent k_{sol} (e/Å ³), B_{sol} (Å ²)	0.34 , 47.1	EDS
L-test for twinning ²	$\langle L \rangle = 0.50$, $\langle L^2 \rangle = 0.33$	Xtriage
Estimated twinning fraction	No twinning to report.	Xtriage
F_o, F_c correlation	0.96	EDS
Total number of atoms	3280	wwPDB-VP
Average B, all atoms (Å ²)	19.0	wwPDB-VP

Xtriage's analysis on translational NCS is as follows: *The largest off-origin peak in the Patterson function is 4.86% of the height of the origin peak. No significant pseudotranslation is detected.*

¹Intensities estimated from amplitudes.

²Theoretical values of $\langle |L| \rangle$, $\langle L^2 \rangle$ for acentric reflections are 0.5, 0.333 respectively for untwinned datasets, and 0.375, 0.2 for perfectly twinned datasets.

5 Model quality ⓘ

5.1 Standard geometry ⓘ

Bond lengths and bond angles in the following residue types are not validated in this section: MG, CL, IPM

The Z score for a bond length (or angle) is the number of standard deviations the observed value is removed from the expected value. A bond length (or angle) with $|Z| > 5$ is considered an outlier worth inspection. RMSZ is the root-mean-square of all Z scores of the bond lengths (or angles).

Mol	Chain	Bond lengths		Bond angles	
		RMSZ	$\# Z > 5$	RMSZ	$\# Z > 5$
1	A	1.40	8/2873 (0.3%)	1.26	21/3875 (0.5%)

All (8) bond length outliers are listed below:

Mol	Chain	Res	Type	Atoms	Z	Observed(Å)	Ideal(Å)
1	A	64	GLU	CD-OE2	11.36	1.38	1.25
1	A	220	GLU	CB-CG	-7.19	1.38	1.52
1	A	167	ARG	CG-CD	7.15	1.69	1.51
1	A	238	PHE	CE1-CZ	7.10	1.50	1.37
1	A	230	GLN	CD-OE1	6.10	1.37	1.24
1	A	21	ALA	CA-CB	5.48	1.64	1.52
1	A	41	TYR	CG-CD1	5.30	1.46	1.39
1	A	179	GLU	CD-OE1	5.25	1.31	1.25

All (21) bond angle outliers are listed below:

Mol	Chain	Res	Type	Atoms	Z	Observed(°)	Ideal(°)
1	A	49	ASP	CB-CG-OD1	7.88	125.39	118.30
1	A	22	ARG	NE-CZ-NH1	-7.29	116.66	120.30
1	A	204	ARG	NE-CZ-NH2	7.12	123.86	120.30
1	A	246	LEU	CB-CG-CD2	-7.05	99.01	111.00
1	A	225	ASP	CB-CG-OD1	-6.96	112.03	118.30
1	A	64	GLU	OE1-CD-OE2	6.95	131.64	123.30
1	A	64	GLU	CG-CD-OE1	-6.79	104.72	118.30
1	A	118[A]	MET	CG-SD-CE	6.47	110.55	100.20
1	A	118[B]	MET	CG-SD-CE	6.47	110.55	100.20
1	A	70	LEU	CB-CG-CD2	-6.32	100.25	111.00
1	A	150	ARG	NE-CZ-NH2	6.04	123.32	120.30
1	A	122	ARG	NE-CZ-NH1	5.92	123.26	120.30
1	A	124	ASP	CB-CG-OD2	-5.89	113.00	118.30

Continued on next page...

Continued from previous page...

Mol	Chain	Res	Type	Atoms	Z	Observed(°)	Ideal(°)
1	A	22	ARG	NE-CZ-NH2	5.59	123.10	120.30
1	A	308	ARG	NE-CZ-NH1	5.52	123.06	120.30
1	A	11	ASP	CB-CG-OD1	-5.41	113.43	118.30
1	A	204	ARG	NE-CZ-NH1	-5.36	117.62	120.30
1	A	164	ARG	NE-CZ-NH2	5.35	122.97	120.30
1	A	131	ASP	CB-CG-OD2	-5.33	113.50	118.30
1	A	223	TYR	CZ-CE2-CD2	-5.18	115.14	119.80
1	A	318	LEU	CB-CG-CD1	5.04	119.57	111.00

There are no chirality outliers.

There are no planarity outliers.

5.2 Too-close contacts

In the following table, the Non-H and H(model) columns list the number of non-hydrogen atoms and hydrogen atoms in the chain respectively. The H(added) column lists the number of hydrogen atoms added and optimized by MolProbity. The Clashes column lists the number of clashes within the asymmetric unit, whereas Symm-Clashes lists symmetry related clashes.

Mol	Chain	Non-H	H(model)	H(added)	Clashes	Symm-Clashes
1	A	2794	0	2823	32	0
2	A	12	0	9	0	0
3	A	1	0	0	0	0
4	A	1	0	0	0	0
5	A	472	0	0	7	0
All	All	3280	0	2832	32	0

The all-atom clashscore is defined as the number of clashes found per 1000 atoms (including hydrogen atoms). The all-atom clashscore for this structure is 6.

All (32) close contacts within the same asymmetric unit are listed below, sorted by their clash magnitude.

Atom-1	Atom-2	Interatomic distance (Å)	Clash overlap (Å)
1:A:22:ARG:O	1:A:26[B]:LYS:HG2	1.75	0.86
1:A:77:PRO:HA	1:A:80:GLU:OE2	1.77	0.84
1:A:84:PRO:O	1:A:90:ARG:HD3	1.83	0.78
1:A:81:HIS:CE1	1:A:82:LEU:HD13	2.19	0.78
1:A:168:LYS:HE3	5:A:752:HOH:O	1.86	0.76
1:A:40:GLU:OE1	5:A:945:HOH:O	2.10	0.67
1:A:342:GLN:HE22	1:A:345:LYS:NZ	1.98	0.61

Continued on next page...

Continued from previous page...

Atom-1	Atom-2	Interatomic distance (Å)	Clash overlap (Å)
1:A:220:GLU:OE2	5:A:965:HOH:O	2.16	0.60
1:A:220:GLU:CD	5:A:965:HOH:O	2.39	0.60
1:A:230:GLN:HE22	1:A:233:ARG:HH11	1.48	0.60
1:A:26[B]:LYS:HD3	5:A:712:HOH:O	2.05	0.56
1:A:26[B]:LYS:HD3	5:A:877:HOH:O	2.06	0.56
1:A:230:GLN:HE21	1:A:234:ARG:HE	1.54	0.54
1:A:112:HIS:HD2	5:A:741:HOH:O	1.91	0.53
1:A:133:LEU:CD2	1:A:180[B]:SER:OG	2.59	0.50
1:A:77:PRO:CA	1:A:80:GLU:OE2	2.57	0.49
1:A:81:HIS:CE1	1:A:82:LEU:CD1	2.94	0.48
1:A:230:GLN:NE2	1:A:233:ARG:HH11	2.10	0.48
1:A:90:ARG:HG3	1:A:90:ARG:HH11	1.80	0.46
1:A:335:GLY:O	1:A:343:ARG:HD3	2.15	0.46
1:A:342:GLN:HE22	1:A:345:LYS:HZ1	1.64	0.45
1:A:230:GLN:HE22	1:A:233:ARG:HE	1.65	0.44
1:A:269:SER:HB2	1:A:277[B]:MET:HG2	1.98	0.44
1:A:84:PRO:HA	1:A:87:GLN:HE21	1.83	0.43
1:A:134[B]:CYS:SG	1:A:255:ILE:HD12	2.58	0.43
1:A:1:SER:OG	1:A:2:SER:N	2.52	0.42
1:A:314:GLU:HG3	1:A:318:LEU:HD22	2.02	0.42
1:A:230:GLN:NE2	1:A:234:ARG:HE	2.16	0.42
1:A:41:TYR:CZ	1:A:62:GLY:HA3	2.55	0.41
1:A:306:LEU:HD23	1:A:306:LEU:C	2.40	0.41
1:A:342:GLN:HE22	1:A:345:LYS:HZ2	1.66	0.41
1:A:2:SER:OG	1:A:35:ASN:CG	2.59	0.40

There are no symmetry-related clashes.

5.3 Torsion angles ⓘ

5.3.1 Protein backbone ⓘ

In the following table, the Percentiles column shows the percent Ramachandran outliers of the chain as a percentile score with respect to all X-ray entries followed by that with respect to entries of similar resolution.

The Analysed column shows the number of residues for which the backbone conformation was analysed, and the total number of residues.

Mol	Chain	Analysed	Favoured	Allowed	Outliers	Percentiles	
1	A	371/375 (99%)	356 (96%)	15 (4%)	0	100	100

There are no Ramachandran outliers to report.

5.3.2 Protein sidechains ⓘ

In the following table, the Percentiles column shows the percent sidechain outliers of the chain as a percentile score with respect to all X-ray entries followed by that with respect to entries of similar resolution.

The Analysed column shows the number of residues for which the sidechain conformation was analysed, and the total number of residues.

Mol	Chain	Analysed	Rotameric	Outliers	Percentiles
1	A	298/298 (100%)	292 (98%)	6 (2%)	55 26

All (6) residues with a non-rotameric sidechain are listed below:

Mol	Chain	Res	Type
1	A	82	LEU
1	A	153	GLU
1	A	236	ASN
1	A	253	ASP
1	A	318	LEU
1	A	341	ASP

Some sidechains can be flipped to improve hydrogen bonding and reduce clashes. All (6) such sidechains are listed below:

Mol	Chain	Res	Type
1	A	51	HIS
1	A	81	HIS
1	A	112	HIS
1	A	230	GLN
1	A	236	ASN
1	A	342	GLN

5.3.3 RNA ⓘ

There are no RNA molecules in this entry.

5.4 Non-standard residues in protein, DNA, RNA chains ⓘ

There are no non-standard protein/DNA/RNA residues in this entry.

5.5 Carbohydrates

There are no carbohydrates in this entry.

5.6 Ligand geometry

Of 3 ligands modelled in this entry, 2 are monoatomic - leaving 1 for Mogul analysis.

In the following table, the Counts columns list the number of bonds (or angles) for which Mogul statistics could be retrieved, the number of bonds (or angles) that are observed in the model and the number of bonds (or angles) that are defined in the Chemical Component Dictionary. The Link column lists molecule types, if any, to which the group is linked. The Z score for a bond length (or angle) is the number of standard deviations the observed value is removed from the expected value. A bond length (or angle) with $|Z| > 2$ is considered an outlier worth inspection. RMSZ is the root-mean-square of all Z scores of the bond lengths (or angles).

Mol	Type	Chain	Res	Link	Bond lengths			Bond angles		
					Counts	RMSZ	$\# Z > 2$	Counts	RMSZ	$\# Z > 2$
2	IPM	A	401	3	5,11,11	1.69	1 (20%)	5,15,15	1.31	0

In the following table, the Chirals column lists the number of chiral outliers, the number of chiral centers analysed, the number of these observed in the model and the number defined in the Chemical Component Dictionary. Similar counts are reported in the Torsion and Rings columns. '-' means no outliers of that kind were identified.

Mol	Type	Chain	Res	Link	Chirals	Torsions	Rings
2	IPM	A	401	3	-	0/8/16/16	-

All (1) bond length outliers are listed below:

Mol	Chain	Res	Type	Atoms	Z	Observed(Å)	Ideal(Å)
2	A	401	IPM	C3-C5	-2.45	1.50	1.54

There are no bond angle outliers.

There are no chirality outliers.

There are no torsion outliers.

There are no ring outliers.

No monomer is involved in short contacts.

5.7 Other polymers

There are no such residues in this entry.

5.8 Polymer linkage issues ⓘ

There are no chain breaks in this entry.

6 Fit of model and data [i](#)

6.1 Protein, DNA and RNA chains [i](#)

In the following table, the column labelled ‘#RSRZ> 2’ contains the number (and percentage) of RSRZ outliers, followed by percent RSRZ outliers for the chain as percentile scores relative to all X-ray entries and entries of similar resolution. The OWAB column contains the minimum, median, 95th percentile and maximum values of the occupancy-weighted average B-factor per residue. The column labelled ‘Q< 0.9’ lists the number of (and percentage) of residues with an average occupancy less than 0.9.

Mol	Chain	Analysed	<RSRZ>	#RSRZ>2	OWAB(Å ²)	Q<0.9
1	A	363/375 (96%)	0.04	17 (4%) 31 36	8, 16, 36, 53	1 (0%)

All (17) RSRZ outliers are listed below:

Mol	Chain	Res	Type	RSRZ
1	A	1	SER	6.5
1	A	77	PRO	4.4
1	A	85	ASN	3.9
1	A	84	PRO	3.6
1	A	81	HIS	3.5
1	A	287	ASP	3.4
1	A	2	SER	3.2
1	A	341	ASP	3.0
1	A	82	LEU	2.9
1	A	153	GLU	2.5
1	A	33	GLY	2.5
1	A	34	LEU	2.4
1	A	250	ILE	2.4
1	A	290	GLY	2.3
1	A	80	GLU	2.2
1	A	87	GLN	2.1
1	A	340	SER	2.0

6.2 Non-standard residues in protein, DNA, RNA chains [i](#)

There are no non-standard protein/DNA/RNA residues in this entry.

6.3 Carbohydrates [i](#)

There are no carbohydrates in this entry.

6.4 Ligands [i](#)

In the following table, the Atoms column lists the number of modelled atoms in the group and the number defined in the chemical component dictionary. The B-factors column lists the minimum, median, 95th percentile and maximum values of B factors of atoms in the group. The column labelled 'Q< 0.9' lists the number of atoms with occupancy less than 0.9.

Mol	Type	Chain	Res	Atoms	RSCC	RSR	B-factors(\AA^2)	Q<0.9
2	IPM	A	401	12/12	0.97	0.10	8,10,13,14	0
4	CL	A	403	1/1	1.00	0.10	10,10,10,10	0
3	MG	A	402	1/1	1.00	0.08	10,10,10,10	0

6.5 Other polymers [i](#)

There are no such residues in this entry.