



# Full wwPDB X-ray Structure Validation Report ⓘ

May 25, 2020 – 07:56 am BST

PDB ID : 5VMM  
Title : Staphylococcus aureus IsdB bound to human hemoglobin  
Authors : Bowden, C.F.; Chan, A.C.; Murphy, M.E.  
Deposited on : 2017-04-27  
Resolution : 3.60 Å(reported)

This is a Full wwPDB X-ray Structure Validation Report for a publicly released PDB entry.

We welcome your comments at [validation@mail.wwpdb.org](mailto:validation@mail.wwpdb.org)

A user guide is available at

<https://www.wwpdb.org/validation/2017/XrayValidationReportHelp>

with specific help available everywhere you see the ⓘ symbol.

---

The following versions of software and data (see [references ⓘ](#)) were used in the production of this report:

MolProbity : 4.02b-467  
Mogul : 1.8.5 (274361), CSD as541be (2020)  
Xtriage (Phenix) : 1.13  
EDS : 2.11  
buster-report : 1.1.7 (2018)  
Percentile statistics : 20191225.v01 (using entries in the PDB archive December 25th 2019)  
Refmac : 5.8.0158  
CCP4 : 7.0.044 (Gargrove)  
Ideal geometry (proteins) : Engh & Huber (2001)  
Ideal geometry (DNA, RNA) : Parkinson et al. (1996)  
Validation Pipeline (wwPDB-VP) : 2.11

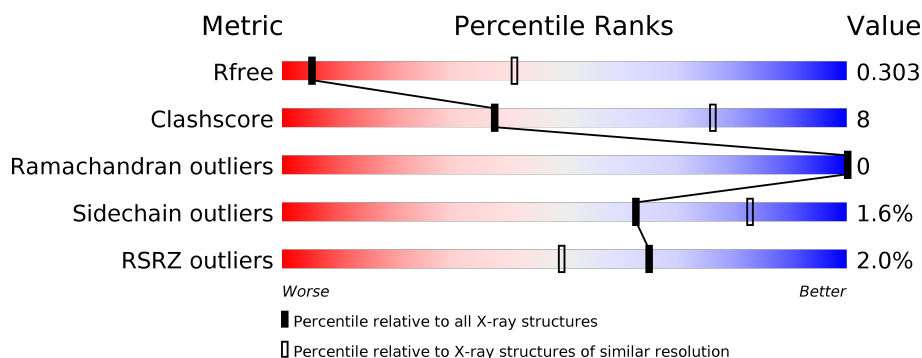
# 1 Overall quality at a glance

The following experimental techniques were used to determine the structure:

## *X-RAY DIFFRACTION*

The reported resolution of this entry is 3.60 Å.

Percentile scores (ranging between 0-100) for global validation metrics of the entry are shown in the following graphic. The table shows the number of entries on which the scores are based.



Metric	Whole archive (#Entries)	Similar resolution (#Entries, resolution range(Å))
$R_{free}$	130704	1257 (3.70-3.50)
Clashscore	141614	1353 (3.70-3.50)
Ramachandran outliers	138981	1307 (3.70-3.50)
Sidechain outliers	138945	1307 (3.70-3.50)
RSRZ outliers	127900	1161 (3.70-3.50)

The table below summarises the geometric issues observed across the polymeric chains and their fit to the electron density. The red, orange, yellow and green segments on the lower bar indicate the fraction of residues that contain outliers for  $\geq 3$ , 2, 1 and 0 types of geometric quality criteria respectively. A grey segment represents the fraction of residues that are not modelled. The numeric value for each fraction is indicated below the corresponding segment, with a dot representing fractions  $\leq 5\%$ . The upper red bar (where present) indicates the fraction of residues that have poor fit to the electron density. The numeric value is given above the bar.

Mol	Chain	Length	Quality of chain
1	A	141	<div> <div>84%</div> <div>14%</div> <div>•</div> </div>
1	C	141	<div> <div>%</div> <div>74%</div> <div>26%</div> </div>
2	B	146	<div> <div>%</div> <div>75%</div> <div>14%</div> <div>•</div> <div>10%</div> </div>
2	D	146	<div> <div>72%</div> <div>16%</div> <div>12%</div> </div>
3	E	336	<div> <div>4%</div> <div>74%</div> <div>24%</div> <div>•</div> </div>
3	F	336	<div> <div>3%</div> <div>75%</div> <div>21%</div> <div>••</div> </div>

Continued on next page...

Continued from previous page...

Mol	Chain	Length	Quality of chain
4	H	142	<div><div></div><div>4%</div><div></div><div>79%</div><div></div><div>20%</div><div></div></div>
4	J	142	<div><div></div><div>%</div><div></div><div>68%</div><div></div><div>26%</div><div></div><div>• 5%</div></div>

## 2 Entry composition

There are 5 unique types of molecules in this entry. The entry contains 11827 atoms, of which 0 are hydrogens and 0 are deuteriums.

In the tables below, the ZeroOcc column contains the number of atoms modelled with zero occupancy, the AltConf column contains the number of residues with at least one atom in alternate conformation and the Trace column contains the number of residues modelled with at most 2 atoms.

- Molecule 1 is a protein called Hemoglobin subunit alpha.

Mol	Chain	Residues	Atoms					ZeroOcc	AltConf	Trace
1	A	139	Total	C	N	O	S	0	0	0
			1052	676	185	189	2			
1	C	141	Total	C	N	O	S	0	0	0
			1068	685	187	193	3			

- Molecule 2 is a protein called Hemoglobin subunit beta.

Mol	Chain	Residues	Atoms					ZeroOcc	AltConf	Trace
2	B	132	Total	C	N	O	S	0	0	0
			1002	647	173	180	2			
2	D	128	Total	C	N	O	S	0	0	0
			969	625	167	175	2			

- Molecule 3 is a protein called Iron-regulated cell wall-anchored protein.

Mol	Chain	Residues	Atoms					ZeroOcc	AltConf	Trace
3	E	329	Total	C	N	O	S	0	0	0
			2714	1728	450	527	9			
3	F	325	Total	C	N	O	S	0	0	0
			2675	1707	443	516	9			

There are 4 discrepancies between the modelled and reference sequences:

Chain	Residue	Modelled	Actual	Comment	Reference
E	124	GLY	-	expression tag	UNP A0A1K8PKR3
E	125	SER	-	expression tag	UNP A0A1K8PKR3
F	124	GLY	-	expression tag	UNP A0A1K8PKR3
F	125	SER	-	expression tag	UNP A0A1K8PKR3

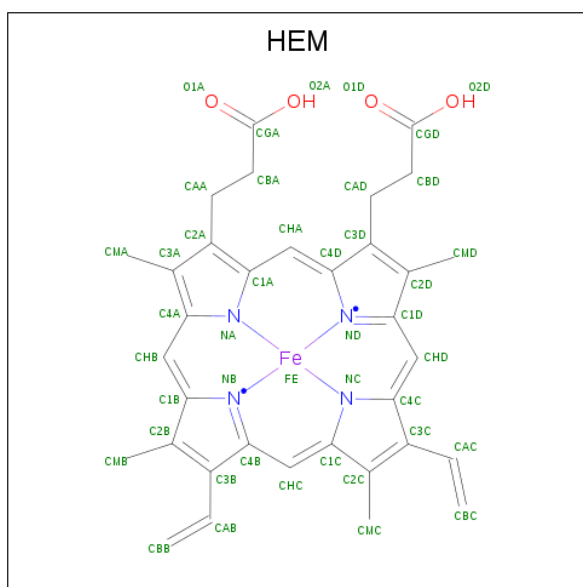
- Molecule 4 is a protein called Iron-regulated cell wall-anchored protein.

Mol	Chain	Residues	Atoms					ZeroOcc	AltConf	Trace
4	H	141	Total 1156	C 737	N 193	O 224	S 2	0	0	0
4	J	135	Total 1105	C 708	N 182	O 213	S 2	0	0	0

There are 4 discrepancies between the modelled and reference sequences:

Chain	Residue	Modelled	Actual	Comment	Reference
H	124	GLY	-	expression tag	UNP A0A1K8PKR3
H	125	SER	-	expression tag	UNP A0A1K8PKR3
J	124	GLY	-	expression tag	UNP A0A1K8PKR3
J	125	SER	-	expression tag	UNP A0A1K8PKR3

- Molecule 5 is PROTOPORPHYRIN IX CONTAINING FE (three-letter code: HEM) (formula:  $C_{34}H_{32}FeN_4O_4$ ).




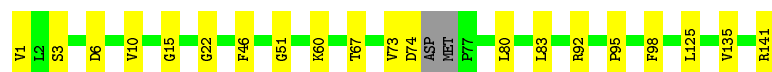
Mol	Chain	Residues	Atoms					ZeroOcc	AltConf
5	A	1	Total 43	C 34	Fe 1	N 4	O 4	0	0
5	C	1	Total 43	C 34	Fe 1	N 4	O 4	0	0

### 3 Residue-property plots

These plots are drawn for all protein, RNA and DNA chains in the entry. The first graphic for a chain summarises the proportions of the various outlier classes displayed in the second graphic. The second graphic shows the sequence view annotated by issues in geometry and electron density. Residues are color-coded according to the number of geometric quality criteria for which they contain at least one outlier: green = 0, yellow = 1, orange = 2 and red = 3 or more. A red dot above a residue indicates a poor fit to the electron density ( $RSRZ > 2$ ). Stretches of 2 or more consecutive residues without any outlier are shown as a green connector. Residues present in the sample, but not in the model, are shown in grey.

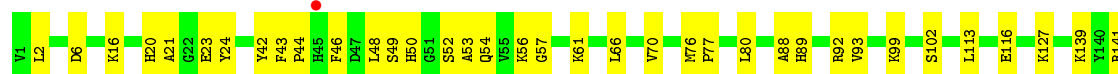
- Molecule 1: Hemoglobin subunit alpha

Chain A: 




- Molecule 1: Hemoglobin subunit alpha

Chain C: 



- Molecule 2: Hemoglobin subunit beta

Chain B: 



- Molecule 2: Hemoglobin subunit beta

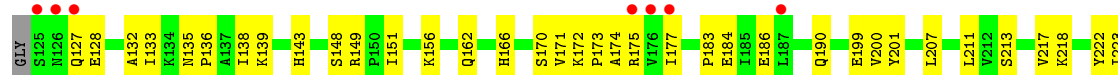
Chain D: 

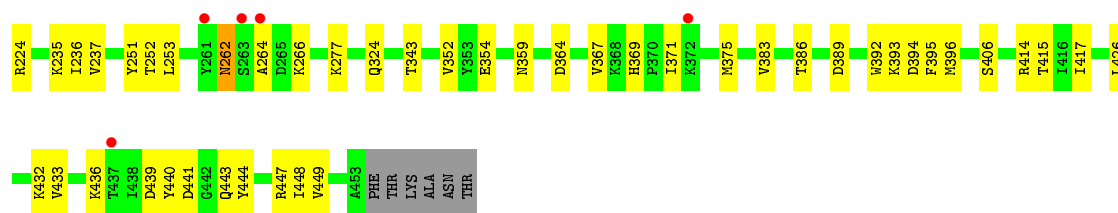


HIS  
LYS  
TYR  
HIS

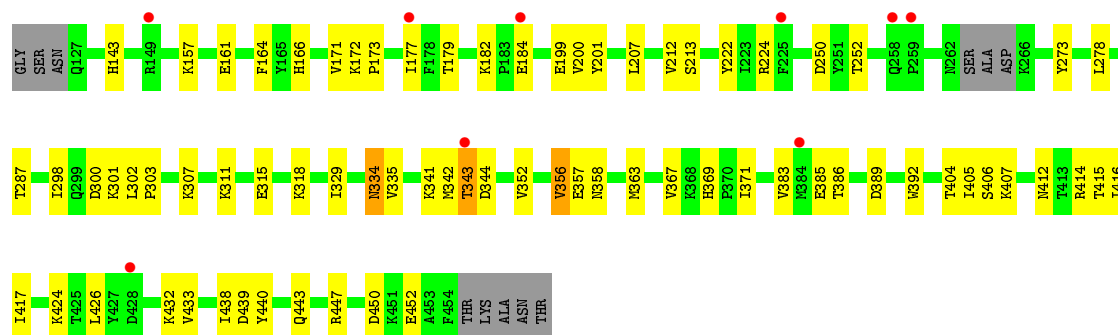
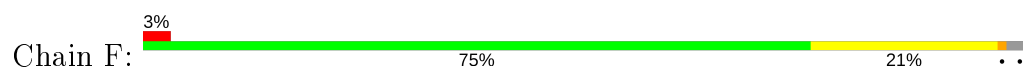
- Molecule 3: Iron-regulated cell wall-anchored protein

Chain E: 

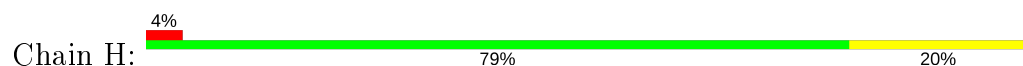




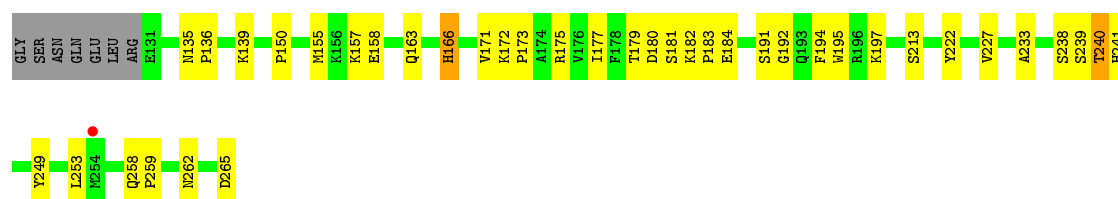
• Molecule 3: Iron-regulated cell wall-anchored protein



• Molecule 4: Iron-regulated cell wall-anchored protein



• Molecule 4: Iron-regulated cell wall-anchored protein



## 4 Data and refinement statistics

Property	Value	Source
Space group	P 21 21 2	Depositor
Cell constants a, b, c, $\alpha$ , $\beta$ , $\gamma$	140.81Å 209.11Å 70.43Å 90.00° 90.00° 90.00°	Depositor
Resolution (Å)	49.79 – 3.60 49.79 – 3.60	Depositor EDS
% Data completeness (in resolution range)	99.6 (49.79-3.60) 91.3 (49.79-3.60)	Depositor EDS
$R_{merge}$	0.12	Depositor
$R_{sym}$	(Not available)	Depositor
$\langle I/\sigma(I) \rangle$ <sup>1</sup>	1.36 (at 3.57Å)	Xtriage
Refinement program	PHENIX (phenix.refine: 1.9_1692)	Depositor
R, $R_{free}$	0.252 , 0.302 0.258 , 0.303	Depositor DCC
$R_{free}$ test set	1996 reflections (8.03%)	wwPDB-VP
Wilson B-factor (Å <sup>2</sup> )	108.2	Xtriage
Anisotropy	0.118	Xtriage
Bulk solvent $k_{sol}$ (e/Å <sup>3</sup> ), $B_{sol}$ (Å <sup>2</sup> )	0.27 , 39.6	EDS
L-test for twinning <sup>2</sup>	$\langle  L  \rangle = 0.46$ , $\langle L^2 \rangle = 0.29$	Xtriage
Estimated twinning fraction	No twinning to report.	Xtriage
$F_o, F_c$ correlation	0.87	EDS
Total number of atoms	11827	wwPDB-VP
Average B, all atoms (Å <sup>2</sup> )	111.0	wwPDB-VP

Xtriage's analysis on translational NCS is as follows: *The largest off-origin peak in the Patterson function is 3.58% of the height of the origin peak. No significant pseudotranslation is detected.*

<sup>1</sup>Intensities estimated from amplitudes.

<sup>2</sup>Theoretical values of  $\langle |L| \rangle$ ,  $\langle L^2 \rangle$  for acentric reflections are 0.5, 0.333 respectively for untwinned datasets, and 0.375, 0.2 for perfectly twinned datasets.



## 5 Model quality [i](#)

### 5.1 Standard geometry [i](#)

Bond lengths and bond angles in the following residue types are not validated in this section: HEM

The Z score for a bond length (or angle) is the number of standard deviations the observed value is removed from the expected value. A bond length (or angle) with  $|Z| > 5$  is considered an outlier worth inspection. RMSZ is the root-mean-square of all Z scores of the bond lengths (or angles).

Mol	Chain	Bond lengths		Bond angles	
		RMSZ	# Z  >5	RMSZ	# Z  >5
1	A	0.22	0/1079	0.36	0/1466
1	C	0.22	0/1096	0.43	0/1491
2	B	0.22	0/1027	0.39	0/1396
2	D	0.21	0/992	0.39	0/1348
3	E	0.22	0/2769	0.39	0/3725
3	F	0.22	0/2729	0.39	0/3670
4	H	0.22	0/1184	0.37	0/1595
4	J	0.24	0/1133	0.41	0/1527
All	All	0.22	0/12009	0.39	0/16218

There are no bond length outliers.

There are no bond angle outliers.

There are no chirality outliers.

There are no planarity outliers.

### 5.2 Too-close contacts [i](#)

In the following table, the Non-H and H(model) columns list the number of non-hydrogen atoms and hydrogen atoms in the chain respectively. The H(added) column lists the number of hydrogen atoms added and optimized by MolProbity. The Clashes column lists the number of clashes within the asymmetric unit, whereas Symm-Clashes lists symmetry related clashes.

Mol	Chain	Non-H	H(model)	H(added)	Clashes	Symm-Clashes
1	A	1052	0	1060	15	0
1	C	1068	0	1073	22	0
2	B	1002	0	999	14	0
2	D	969	0	971	15	0
3	E	2714	0	2703	49	0

*Continued on next page...*

*Continued from previous page...*

Mol	Chain	Non-H	H(model)	H(added)	Clashes	Symm-Clashes
3	F	2675	0	2655	43	0
4	H	1156	0	1124	14	0
4	J	1105	0	1075	22	0
5	A	43	0	30	2	0
5	C	43	0	30	2	0
All	All	11827	0	11720	182	0

The all-atom clashscore is defined as the number of clashes found per 1000 atoms (including hydrogen atoms). The all-atom clashscore for this structure is 8.

All (182) close contacts within the same asymmetric unit are listed below, sorted by their clash magnitude.

Atom-1	Atom-2	Interatomic distance (Å)	Clash overlap (Å)
3:F:405:ILE:HG23	3:F:417:ILE:HG12	1.67	0.77
5:C:201:HEM:HHD	5:C:201:HEM:HBC2	1.68	0.75
4:H:242:PHE:HB3	4:H:245:LYS:HB3	1.70	0.73
3:E:201:TYR:HB3	3:E:207:LEU:H	1.56	0.71
5:C:201:HEM:HBB2	5:C:201:HEM:HHC	1.72	0.70
3:F:171:VAL:HG12	3:F:173:PRO:HD2	1.73	0.70
1:A:1:VAL:HG22	1:C:139:LYS:HG2	1.73	0.70
3:F:358:ASN:OD1	3:F:447:ARG:NH2	2.26	0.69
1:A:92:ARG:H	3:F:438:ILE:HG23	1.58	0.68
4:J:171:VAL:HG12	4:J:173:PRO:HD2	1.74	0.68
1:C:2:LEU:HD12	1:C:127:LYS:HE3	1.77	0.67
3:F:143:HIS:O	3:F:224:ARG:NH2	2.27	0.67
3:F:406:SER:HG	3:F:415:THR:HG1	1.39	0.66
2:B:1:VAL:N	2:B:80:ASN:OD1	2.26	0.66
3:F:404:THR:HG21	3:F:414:ARG:HD3	1.78	0.66
3:E:171:VAL:HG12	3:E:173:PRO:HD2	1.77	0.66
5:A:201:HEM:HBC2	5:A:201:HEM:HHD	1.76	0.66
2:D:53:ALA:O	2:D:57:ASN:ND2	2.29	0.66
1:C:92:ARG:HD2	3:E:439:ASP:HB3	1.77	0.66
1:C:16:LYS:HG3	1:C:116:GLU:HG2	1.78	0.65
2:D:8:LYS:HG3	2:D:78:LEU:HD12	1.77	0.65
1:C:113:LEU:HB3	1:C:116:GLU:HB2	1.79	0.65
3:E:213:SER:HB3	3:E:222:TYR:HB2	1.78	0.65
4:J:213:SER:HB3	4:J:222:TYR:HB2	1.78	0.64
4:J:183:PRO:HB3	4:J:262:ASN:HB3	1.81	0.63
3:F:329:ILE:O	3:F:334:ASN:ND2	2.32	0.62
2:B:4:THR:HB	2:B:7:GLU:HG2	1.82	0.61
1:A:3:SER:OG	1:A:6:ASP:OD2	2.17	0.61

*Continued on next page...*

*Continued from previous page...*

Atom-1	Atom-2	Interatomic distance (Å)	Clash overlap (Å)
2:B:79:ASP:O	2:B:80:ASN:ND2	2.34	0.61
3:E:352:VAL:HG22	3:E:448:ILE:HG13	1.83	0.60
2:B:4:THR:HG22	2:B:6:GLU:H	1.66	0.60
3:F:179:THR:OG1	3:F:182:LYS:O	2.20	0.59
3:F:424:LYS:NZ	3:F:426:LEU:O	2.29	0.59
3:F:404:THR:HG22	3:F:416:ILE:HG22	1.82	0.59
3:E:156:LYS:HB2	3:E:253:LEU:HB3	1.84	0.59
3:E:352:VAL:HB	3:E:364:ASP:HB2	1.86	0.58
3:E:406:SER:HB3	3:E:415:THR:HB	1.86	0.58
5:A:201:HEM:HMB1	5:A:201:HEM:HBB2	1.86	0.58
4:J:150:PRO:HA	4:J:175:ARG:HA	1.84	0.58
2:B:24:GLY:HA2	2:B:68:LEU:HD22	1.85	0.57
4:J:238:SER:HB2	4:J:249:TYR:HB2	1.84	0.57
1:A:15:GLY:HA2	3:F:164:PHE:HB3	1.85	0.57
3:F:383:VAL:HG22	3:F:417:ILE:HG22	1.86	0.57
3:E:143:HIS:O	3:E:224:ARG:NH2	2.38	0.56
3:E:426:LEU:HD21	3:E:447:ARG:HD2	1.86	0.56
4:J:179:THR:OG1	4:J:182:LYS:O	2.23	0.56
4:J:194:PHE:HB3	4:J:241:HIS:HA	1.88	0.56
3:F:367:VAL:HG22	3:F:386:THR:HG22	1.88	0.56
4:H:133:ILE:HA	4:H:138:ILE:HD11	1.88	0.56
4:J:197:LYS:H	4:J:239:SER:HB3	1.70	0.56
1:A:10:VAL:HG22	1:A:125:LEU:HD23	1.89	0.55
3:F:392:TRP:HA	3:F:433:VAL:HG12	1.88	0.55
3:F:335:VAL:HG22	3:F:407:LYS:HD3	1.88	0.54
4:J:258:GLN:HG2	4:J:259:PRO:HD2	1.89	0.54
3:E:175:ARG:HB2	3:E:186:GLU:HB3	1.90	0.54
3:E:394:ASP:OD1	3:E:395:PHE:N	2.40	0.54
4:H:179:THR:OG1	4:H:182:LYS:O	2.26	0.53
4:H:185:ILE:HD11	4:H:260:ILE:HD13	1.90	0.53
3:E:383:VAL:HG22	3:E:417:ILE:HG22	1.90	0.53
3:F:302:LEU:HD23	3:F:307:LYS:HA	1.90	0.53
3:F:389:ASP:N	3:F:412:ASN:OD1	2.41	0.53
3:E:156:LYS:HA	3:E:162:GLN:HA	1.90	0.53
2:B:31:LEU:HD22	2:B:106:LEU:HD13	1.91	0.52
1:C:46:PHE:HB2	1:C:54:GLN:HB3	1.91	0.52
4:J:177:ILE:HB	4:J:184:GLU:HG3	1.91	0.52
2:D:103:PHE:HE2	2:D:137:VAL:HG13	1.74	0.52
2:B:18:VAL:HG13	2:B:23:VAL:HG21	1.92	0.51
1:A:141:ARG:HE	2:D:37:TRP:HZ3	1.58	0.51
1:C:20:HIS:O	1:C:23:GLU:HG2	2.11	0.51

*Continued on next page...*

*Continued from previous page...*

Atom-1	Atom-2	Interatomic distance (Å)	Clash overlap (Å)
3:E:389:ASP:OD1	3:E:414:ARG:NE	2.39	0.51
3:E:172:LYS:HB2	3:E:173:PRO:HD3	1.92	0.51
4:J:233:ALA:HB1	4:J:253:LEU:HD11	1.93	0.50
2:D:123:THR:HB	2:D:125:PRO:HD2	1.93	0.50
1:C:6:ASP:OD2	1:C:127:LYS:NZ	2.35	0.50
3:E:183:PRO:HD3	3:E:262:ASN:HB3	1.94	0.50
3:E:264:ALA:HB1	3:E:266:LYS:HG3	1.93	0.50
3:E:393:LYS:NZ	3:E:441:ASP:OD1	2.42	0.50
2:B:46:GLY:H	2:B:57:ASN:HD21	1.60	0.50
4:J:180:ASP:OD1	4:J:181:SER:N	2.45	0.49
3:E:133:ILE:HA	3:E:138:ILE:HD11	1.94	0.49
4:H:157:LYS:HG2	4:H:158:GLU:H	1.77	0.49
3:F:352:VAL:HG11	3:F:363:MET:HB2	1.94	0.49
4:H:172:LYS:HB3	4:H:173:PRO:HD3	1.93	0.49
4:J:240:THR:HG22	4:J:241:HIS:H	1.76	0.49
1:A:95:PRO:HA	1:A:98:PHE:HD2	1.76	0.49
4:J:155:MET:SD	4:J:166:HIS:HB3	2.53	0.49
3:E:354:GLU:OE1	3:E:359:ASN:ND2	2.38	0.48
3:F:199:GLU:OE1	3:F:201:TYR:OH	2.22	0.48
1:C:21:ALA:O	1:C:24:TYR:HB2	2.13	0.48
2:D:99:ASP:OD1	2:D:99:ASP:N	2.46	0.48
2:B:123:THR:HB	2:B:125:PRO:HD2	1.94	0.48
3:F:278:LEU:HD23	3:F:298:ILE:HG12	1.95	0.48
3:F:341:LYS:H	3:F:341:LYS:HD2	1.79	0.48
3:E:235:LYS:HE2	3:E:251:TYR:HE1	1.78	0.48
3:F:385:GLU:HG2	3:F:415:THR:HG22	1.95	0.48
4:J:191:SER:HB2	4:J:194:PHE:CD2	2.49	0.48
3:E:170:SER:O	3:E:190:GLN:NE2	2.38	0.47
3:E:151:ILE:HG23	3:E:174:ALA:HB3	1.96	0.47
4:J:195:TRP:HZ3	4:J:238:SER:HB3	1.79	0.47
3:E:364:ASP:OD2	3:E:369:HIS:NE2	2.47	0.47
2:D:31:LEU:HD22	2:D:106:LEU:HD13	1.96	0.47
4:J:172:LYS:HB3	4:J:173:PRO:HD3	1.97	0.47
2:D:21:ASP:HA	2:D:65:LYS:HD3	1.96	0.47
3:E:132:ALA:O	3:E:135:ASN:ND2	2.48	0.47
3:F:213:SER:HB3	3:F:222:TYR:HB2	1.96	0.47
4:H:175:ARG:HB2	4:H:186:GLU:HB3	1.96	0.47
3:F:172:LYS:HB3	3:F:173:PRO:HD3	1.96	0.46
4:J:157:LYS:HD3	4:J:163:GLN:HE21	1.80	0.46
1:A:74:ASP:OD1	1:A:74:ASP:N	2.48	0.46
2:B:36:PRO:HG3	1:C:141:ARG:NH1	2.31	0.46

*Continued on next page...*

*Continued from previous page...*

Atom-1	Atom-2	Interatomic distance (Å)	Clash overlap (Å)
3:F:250:ASP:N	3:F:250:ASP:OD1	2.46	0.46
1:A:80:LEU:HD22	1:C:139:LYS:NZ	2.30	0.46
2:B:77:HIS:ND1	2:B:84:THR:HG21	2.31	0.46
3:E:127:GLN:HG2	3:E:128:GLU:H	1.80	0.46
3:E:211:LEU:HA	3:E:223:ILE:HA	1.97	0.46
3:E:218:LYS:NZ	3:F:300:ASP:OD2	2.48	0.45
1:A:83:LEU:HB3	1:A:135:VAL:HG21	1.98	0.45
3:E:166:HIS:HD2	3:E:252:THR:HG21	1.81	0.45
3:E:369:HIS:O	3:E:371:ILE:N	2.50	0.45
1:A:22:GLY:HA2	1:A:60:LYS:HA	1.99	0.45
3:E:324:GLN:NE2	3:E:396:MET:SD	2.90	0.45
1:C:57:GLY:O	1:C:61:LYS:HG2	2.17	0.45
3:E:200:VAL:HG12	3:E:236:ILE:HG23	1.99	0.44
3:F:369:HIS:O	3:F:371:ILE:N	2.50	0.44
3:E:135:ASN:HA	3:E:136:PRO:HD3	1.83	0.44
1:C:52:SER:OG	1:C:53:ALA:N	2.50	0.44
3:E:148:SER:O	3:E:149:ARG:NE	2.51	0.44
2:D:14:LEU:HD23	2:D:130:TYR:HE2	1.82	0.44
3:F:432:LYS:HG2	3:F:443:GLN:HA	2.00	0.44
4:H:149:ARG:HD3	4:H:150:PRO:HD2	1.99	0.44
3:E:392:TRP:HA	3:E:433:VAL:HG22	1.99	0.43
4:H:232:LYS:NZ	4:H:257:ALA:O	2.51	0.43
3:F:200:VAL:HG12	3:F:207:LEU:HB2	2.01	0.43
4:H:191:SER:HB3	4:H:194:PHE:HD2	1.82	0.43
4:J:135:ASN:HA	4:J:136:PRO:HD3	1.81	0.43
4:H:192:GLY:HA2	4:H:195:TRP:HD1	1.83	0.43
3:E:367:VAL:HG22	3:E:386:THR:HG22	2.00	0.43
4:J:136:PRO:HA	4:J:139:LYS:HD3	2.01	0.43
3:E:139:LYS:O	3:F:311:LYS:NZ	2.41	0.43
4:H:215:ASP:HB3	4:H:220:TYR:H	1.84	0.43
1:A:67:THR:HG23	3:F:164:PHE:CE1	2.54	0.42
3:F:315:GLU:HA	3:F:318:LYS:HE2	2.00	0.42
1:C:76:MET:HB3	1:C:77:PRO:HD2	2.01	0.42
3:E:199:GLU:HB2	3:E:237:VAL:HG13	2.01	0.42
3:F:356:VAL:HG13	3:F:357:GLU:H	1.83	0.42
2:D:11:VAL:HG11	2:D:75:LEU:HD11	2.01	0.42
1:A:46:PHE:O	1:A:51:GLY:HA2	2.19	0.42
2:D:57:ASN:HA	2:D:58:PRO:HD3	1.87	0.42
1:C:44:PRO:O	1:C:48:LEU:HG	2.20	0.42
3:E:343:THR:HB	3:E:375:MET:HB2	2.01	0.42
3:E:432:LYS:NZ	3:E:443:GLN:HG2	2.35	0.42

*Continued on next page...*

*Continued from previous page...*

Atom-1	Atom-2	Interatomic distance (Å)	Clash overlap (Å)
3:E:426:LEU:HA	3:E:449:VAL:HG12	2.00	0.42
4:J:192:GLY:HA2	4:J:195:TRP:CD1	2.55	0.42
3:F:343:THR:HB	3:F:344:ASP:H	1.57	0.42
4:H:263:SER:OG	4:H:264:ALA:N	2.52	0.42
1:C:66:LEU:O	1:C:70:VAL:HG22	2.20	0.42
1:C:99:LYS:O	1:C:102:SER:OG	2.22	0.42
3:E:177:ILE:HB	3:E:184:GLU:HB2	2.01	0.42
2:D:103:PHE:CE2	2:D:137:VAL:HG13	2.54	0.42
3:E:183:PRO:CD	3:E:262:ASN:HB3	2.50	0.42
3:F:157:LYS:N	3:F:161:GLU:O	2.45	0.42
3:F:302:LEU:HD12	3:F:303:PRO:HD2	2.01	0.42
3:F:166:HIS:CE1	3:F:252:THR:HG21	2.55	0.41
1:C:42:TYR:HD1	1:C:93:VAL:HG12	1.85	0.41
3:E:127:GLN:HG2	3:E:128:GLU:N	2.35	0.41
2:B:43:GLU:HB2	3:E:436:LYS:HD2	2.01	0.41
3:E:277:LYS:HD3	3:E:277:LYS:HA	1.88	0.41
2:B:143:HIS:C	2:D:1:VAL:H1	2.24	0.41
3:F:450:ASP:HB3	3:F:452:GLU:HG2	2.02	0.41
1:C:52:SER:O	1:C:56:LYS:N	2.38	0.41
1:C:49:SER:OG	1:C:50:HIS:N	2.53	0.41
1:A:92:ARG:CZ	3:F:439:ASP:HB2	2.50	0.41
3:E:217:VAL:HG21	3:F:300:ASP:HB2	2.02	0.41
3:F:278:LEU:HD11	3:F:301:LYS:HG3	2.02	0.41
1:A:80:LEU:HD23	1:C:80:LEU:HD13	2.03	0.40
1:C:88:ALA:HB1	1:C:89:HIS:HD2	1.86	0.40
2:D:26:GLU:OE2	2:D:30:ARG:NE	2.54	0.40
3:F:177:ILE:HB	3:F:184:GLU:HB3	2.03	0.40
4:J:157:LYS:HG3	4:J:158:GLU:H	1.86	0.40
3:E:440:TYR:HE1	3:E:444:TYR:CE1	2.39	0.40
4:H:190:GLN:HG2	4:H:220:TYR:CE1	2.56	0.40
2:B:143:HIS:O	2:D:1:VAL:N	2.54	0.40

There are no symmetry-related clashes.

## 5.3 Torsion angles ⓘ

### 5.3.1 Protein backbone ⓘ

In the following table, the Percentiles column shows the percent Ramachandran outliers of the chain as a percentile score with respect to all X-ray entries followed by that with respect to entries of similar resolution.

The Analysed column shows the number of residues for which the backbone conformation was analysed, and the total number of residues.

Mol	Chain	Analysed	Favoured	Allowed	Outliers	Percentiles	
1	A	135/141 (96%)	133 (98%)	2 (2%)	0	100	100
1	C	139/141 (99%)	126 (91%)	13 (9%)	0	100	100
2	B	128/146 (88%)	124 (97%)	4 (3%)	0	100	100
2	D	124/146 (85%)	119 (96%)	5 (4%)	0	100	100
3	E	327/336 (97%)	309 (94%)	18 (6%)	0	100	100
3	F	321/336 (96%)	305 (95%)	16 (5%)	0	100	100
4	H	139/142 (98%)	134 (96%)	5 (4%)	0	100	100
4	J	133/142 (94%)	126 (95%)	7 (5%)	0	100	100
All	All	1446/1530 (94%)	1376 (95%)	70 (5%)	0	100	100

There are no Ramachandran outliers to report.

### 5.3.2 Protein sidechains ⓘ

In the following table, the Percentiles column shows the percent sidechain outliers of the chain as a percentile score with respect to all X-ray entries followed by that with respect to entries of similar resolution.

The Analysed column shows the number of residues for which the sidechain conformation was analysed, and the total number of residues.

Mol	Chain	Analysed	Rotameric	Outliers	Percentiles	
1	A	111/113 (98%)	110 (99%)	1 (1%)	78	90
1	C	113/113 (100%)	112 (99%)	1 (1%)	78	90
2	B	104/118 (88%)	102 (98%)	2 (2%)	57	80
2	D	101/118 (86%)	100 (99%)	1 (1%)	76	88
3	E	301/306 (98%)	300 (100%)	1 (0%)	92	97
3	F	294/306 (96%)	286 (97%)	8 (3%)	44	73
4	H	127/127 (100%)	125 (98%)	2 (2%)	62	83
4	J	121/127 (95%)	117 (97%)	4 (3%)	38	69
All	All	1272/1328 (96%)	1252 (98%)	20 (2%)	62	83

All (20) residues with a non-rotameric sidechain are listed below:

Mol	Chain	Res	Type
1	A	73	VAL
2	B	78	LEU
2	B	80	ASN
1	C	43	PHE
2	D	4	THR
3	E	262	ASN
3	F	212	VAL
3	F	273	TYR
3	F	287	THR
3	F	334	ASN
3	F	342	MET
3	F	343	THR
3	F	356	VAL
3	F	440	TYR
4	H	212	VAL
4	H	253	LEU
4	J	166	HIS
4	J	227	VAL
4	J	240	THR
4	J	265	ASP

Some sidechains can be flipped to improve hydrogen bonding and reduce clashes. All (3) such sidechains are listed below:

Mol	Chain	Res	Type
2	D	57	ASN
3	E	262	ASN
4	J	163	GLN

### 5.3.3 RNA ⓘ

There are no RNA molecules in this entry.

## 5.4 Non-standard residues in protein, DNA, RNA chains ⓘ

There are no non-standard protein/DNA/RNA residues in this entry.

## 5.5 Carbohydrates ⓘ

There are no carbohydrates in this entry.



## 5.6 Ligand geometry

2 ligands are modelled in this entry.

In the following table, the Counts columns list the number of bonds (or angles) for which Mogul statistics could be retrieved, the number of bonds (or angles) that are observed in the model and the number of bonds (or angles) that are defined in the Chemical Component Dictionary. The Link column lists molecule types, if any, to which the group is linked. The Z score for a bond length (or angle) is the number of standard deviations the observed value is removed from the expected value. A bond length (or angle) with  $|Z| > 2$  is considered an outlier worth inspection. RMSZ is the root-mean-square of all Z scores of the bond lengths (or angles).

Mol	Type	Chain	Res	Link	Bond lengths			Bond angles		
					Counts	RMSZ	# Z  > 2	Counts	RMSZ	# Z  > 2
5	HEM	C	201	1	27,50,50	2.24	5 (18%)	17,82,82	1.37	2 (11%)
5	HEM	A	201	1	27,50,50	2.20	6 (22%)	17,82,82	1.33	2 (11%)

In the following table, the Chirals column lists the number of chiral outliers, the number of chiral centers analysed, the number of these observed in the model and the number defined in the Chemical Component Dictionary. Similar counts are reported in the Torsion and Rings columns. '-' means no outliers of that kind were identified.

Mol	Type	Chain	Res	Link	Chirals	Torsions	Rings
5	HEM	C	201	1	-	3/6/54/54	-
5	HEM	A	201	1	-	3/6/54/54	-

All (11) bond length outliers are listed below:

Mol	Chain	Res	Type	Atoms	Z	Observed(Å)	Ideal(Å)
5	C	201	HEM	C3D-C2D	5.76	1.54	1.37
5	A	201	HEM	C3D-C2D	5.72	1.54	1.37
5	C	201	HEM	C3B-C2B	-4.67	1.33	1.40
5	A	201	HEM	C3C-C2C	-4.59	1.34	1.40
5	C	201	HEM	C3C-C2C	-4.48	1.34	1.40
5	A	201	HEM	C3B-CAB	3.85	1.55	1.47
5	A	201	HEM	C3C-CAC	3.75	1.55	1.47
5	C	201	HEM	C3C-CAC	3.73	1.55	1.47
5	A	201	HEM	C3B-C2B	-3.73	1.35	1.40
5	C	201	HEM	C3B-CAB	3.58	1.55	1.47
5	A	201	HEM	CAA-C2A	2.12	1.55	1.52

All (4) bond angle outliers are listed below:

Mol	Chain	Res	Type	Atoms	Z	Observed(°)	Ideal(°)
5	A	201	HEM	CMB-C2B-C3B	2.24	128.86	124.68
5	C	201	HEM	C1D-C2D-C3D	-2.21	105.46	107.00
5	A	201	HEM	C1D-C2D-C3D	-2.20	105.46	107.00
5	C	201	HEM	CMD-C2D-C3D	2.04	128.79	124.94

There are no chirality outliers.

All (6) torsion outliers are listed below:

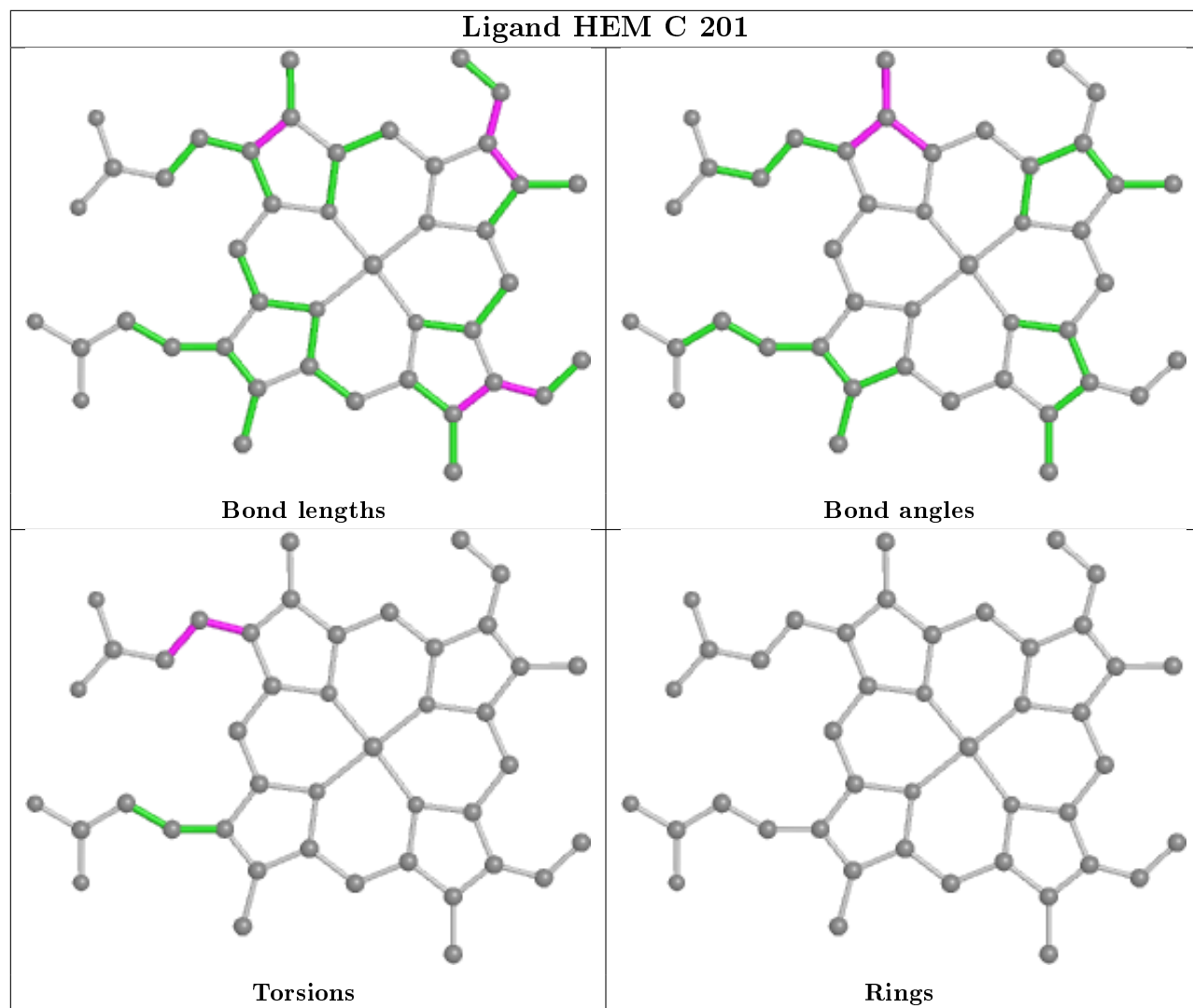
Mol	Chain	Res	Type	Atoms
5	C	201	HEM	C2D-C3D-CAD-CBD
5	C	201	HEM	C4D-C3D-CAD-CBD
5	A	201	HEM	C2D-C3D-CAD-CBD
5	A	201	HEM	C4D-C3D-CAD-CBD
5	C	201	HEM	C3D-CAD-CBD-CGD
5	A	201	HEM	C3D-CAD-CBD-CGD

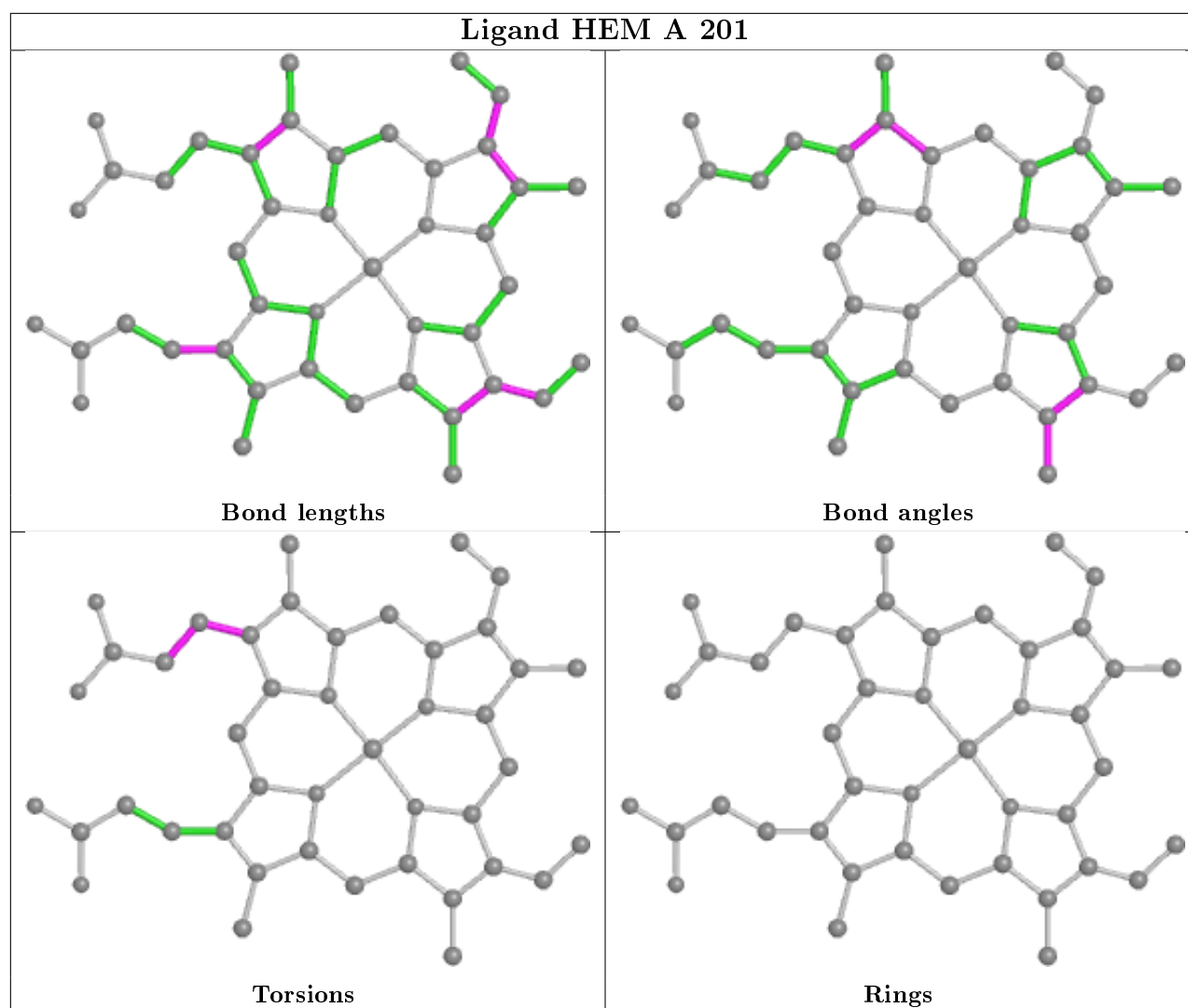
There are no ring outliers.

2 monomers are involved in 4 short contacts:

Mol	Chain	Res	Type	Clashes	Symm-Clashes
5	C	201	HEM	2	0
5	A	201	HEM	2	0

The following is a two-dimensional graphical depiction of Mogul quality analysis of bond lengths, bond angles, torsion angles, and ring geometry for all instances of the Ligand of Interest. In addition, ligands with molecular weight > 250 and outliers as shown on the validation Tables will also be included. For torsion angles, if less than 5% of the Mogul distribution of torsion angles is within 10 degrees of the torsion angle in question, then that torsion angle is considered an outlier. Any bond that is central to one or more torsion angles identified as an outlier by Mogul will be highlighted in the graph. For rings, the root-mean-square deviation (RMSD) between the ring in question and similar rings identified by Mogul is calculated over all ring torsion angles. If the average RMSD is greater than 60 degrees and the minimal RMSD between the ring in question and any Mogul-identified rings is also greater than 60 degrees, then that ring is considered an outlier. The outliers are highlighted in purple. The color gray indicates Mogul did not find sufficient equivalents in the CSD to analyse the geometry.





## 5.7 Other polymers [i](#)

There are no such residues in this entry.

## 5.8 Polymer linkage issues [i](#)

There are no chain breaks in this entry.

## 6 Fit of model and data ⓘ

### 6.1 Protein, DNA and RNA chains ⓘ

In the following table, the column labelled ‘#RSRZ > 2’ contains the number (and percentage) of RSRZ outliers, followed by percent RSRZ outliers for the chain as percentile scores relative to all X-ray entries and entries of similar resolution. The OWAB column contains the minimum, median, 95<sup>th</sup> percentile and maximum values of the occupancy-weighted average B-factor per residue. The column labelled ‘Q < 0.9’ lists the number of (and percentage) of residues with an average occupancy less than 0.9.

Mol	Chain	Analysed	<RSRZ>	#RSRZ > 2	OWAB(Å <sup>2</sup> )	Q < 0.9
1	A	139/141 (98%)	-0.17	0 100 100	69, 91, 140, 156	0
1	C	141/141 (100%)	-0.19	1 (0%) 87 78	68, 94, 153, 165	0
2	B	132/146 (90%)	-0.17	2 (1%) 73 60	66, 102, 154, 171	0
2	D	128/146 (87%)	-0.22	0 100 100	72, 100, 128, 142	0
3	E	329/336 (97%)	0.10	12 (3%) 42 28	84, 113, 142, 163	0
3	F	325/336 (96%)	0.06	9 (2%) 53 37	82, 114, 138, 157	0
4	H	141/142 (99%)	0.29	5 (3%) 44 29	91, 118, 147, 161	0
4	J	135/142 (95%)	0.15	1 (0%) 87 78	94, 118, 147, 159	0
All	All	1470/1530 (96%)	0.01	30 (2%) 65 49	66, 112, 144, 171	0

All (30) RSRZ outliers are listed below:

Mol	Chain	Res	Type	RSRZ
2	B	87	THR	4.6
3	E	175	ARG	4.3
4	H	125	SER	4.2
3	E	177	ILE	3.8
4	H	127	GLN	3.7
3	E	261	TYR	3.7
3	E	126	ASN	3.5
3	F	184	GLU	3.5
3	F	177	ILE	3.5
4	H	198	PHE	3.4
3	E	437	THR	3.2
2	B	143	HIS	3.1
3	F	149	ARG	3.1
1	C	45	HIS	3.1
3	E	127	GLN	2.7
4	H	126	ASN	2.6

*Continued on next page...*

*Continued from previous page...*

Mol	Chain	Res	Type	RSRZ
3	F	384	MET	2.5
3	F	343	THR	2.5
3	F	225	PHE	2.5
3	F	428	ASP	2.4
3	F	258	GLN	2.4
3	E	176	VAL	2.2
3	E	125	SER	2.2
3	E	187	LEU	2.2
3	F	259	PRO	2.2
3	E	264	ALA	2.2
4	H	196	ARG	2.1
4	J	254	MET	2.1
3	E	263	SER	2.1
3	E	372	LYS	2.0

## 6.2 Non-standard residues in protein, DNA, RNA chains [i](#)

There are no non-standard protein/DNA/RNA residues in this entry.

## 6.3 Carbohydrates [i](#)

There are no carbohydrates in this entry.

## 6.4 Ligands [i](#)

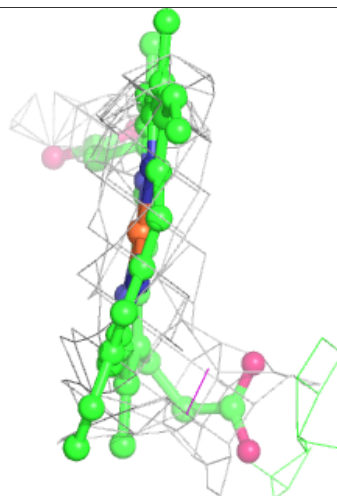
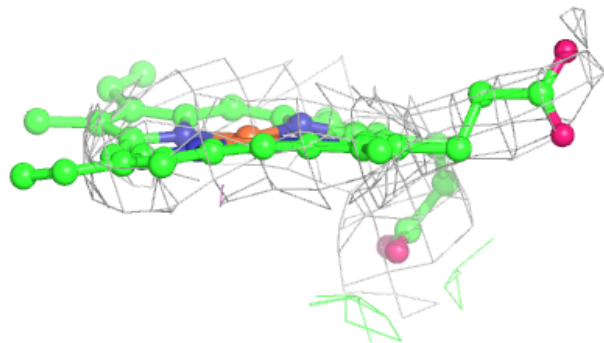
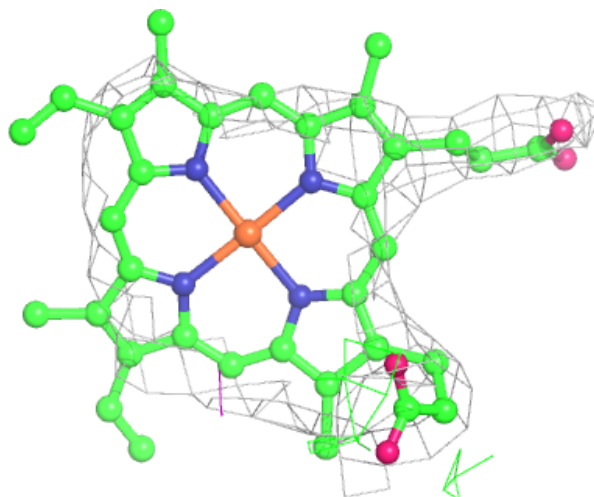
In the following table, the Atoms column lists the number of modelled atoms in the group and the number defined in the chemical component dictionary. The B-factors column lists the minimum, median, 95<sup>th</sup> percentile and maximum values of B factors of atoms in the group. The column labelled 'Q<0.9' lists the number of atoms with occupancy less than 0.9.

Mol	Type	Chain	Res	Atoms	RSCC	RSR	B-factors( $\text{\AA}^2$ )	Q<0.9
5	HEM	C	201	43/43	0.92	0.32	101,114,128,139	0
5	HEM	A	201	43/43	0.95	0.29	96,107,119,142	0

The following is a graphical depiction of the model fit to experimental electron density of all instances of the Ligand of Interest. In addition, ligands with molecular weight > 250 and outliers as shown on the geometry validation Tables will also be included. Each fit is shown from different orientation to approximate a three-dimensional view.

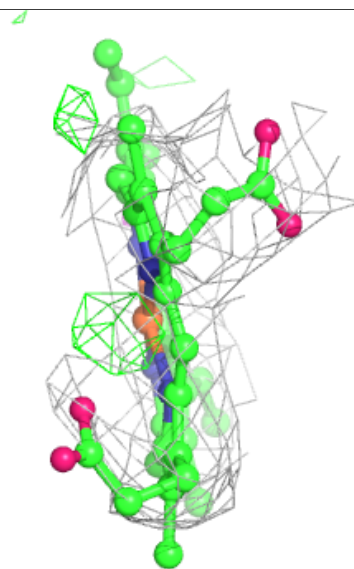
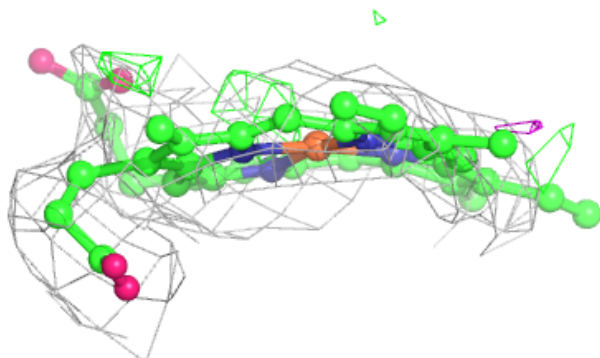
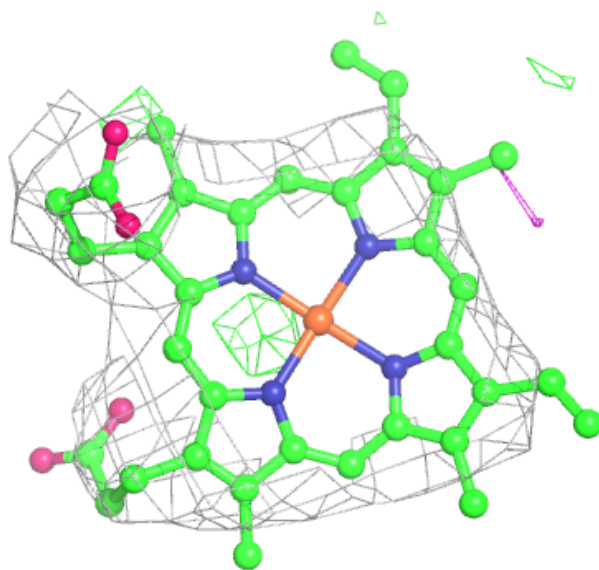
**Electron density around HEM C 201:**

$2mF_o-DF_c$  (at 0.7 rmsd) in gray  
 $mF_o-DF_c$  (at 3 rmsd) in purple (negative)  
and green (positive)



**Electron density around HEM A 201:**

$2mF_o-DF_c$  (at 0.7 rmsd) in gray  
 $mF_o-DF_c$  (at 3 rmsd) in purple (negative)  
and green (positive)



## 6.5 Other polymers ⓘ

There are no such residues in this entry.