



Full wwPDB X-ray Structure Validation Report ⓘ

Sep 14, 2020 – 12:55 PM BST

PDB ID : 6VOS
Title : Crystal structure of macaque anti-HIV-1 antibody RM20J
Authors : Yuan, M.; Wilson, I.A.
Deposited on : 2020-01-31
Resolution : 2.30 Å(reported)

This is a Full wwPDB X-ray Structure Validation Report for a publicly released PDB entry.

We welcome your comments at validation@mail.wwpdb.org

A user guide is available at

<https://www.wwpdb.org/validation/2017/XrayValidationReportHelp>

with specific help available everywhere you see the ⓘ symbol.

The following versions of software and data (see [references ⓘ](#)) were used in the production of this report:

MolProbity : 4.02b-467
Mogul : 1.8.5 (274361), CSD as541be (2020)
Xtriage (Phenix) : 1.13
EDS : 2.14.4.dev1
buster-report : 1.1.7 (2018)
Percentile statistics : 20191225.v01 (using entries in the PDB archive December 25th 2019)
Refmac : 5.8.0158
CCP4 : 7.0.044 (Gargrove)
Ideal geometry (proteins) : Engh & Huber (2001)
Ideal geometry (DNA, RNA) : Parkinson et al. (1996)
Validation Pipeline (wwPDB-VP) : 2.14.4.dev1

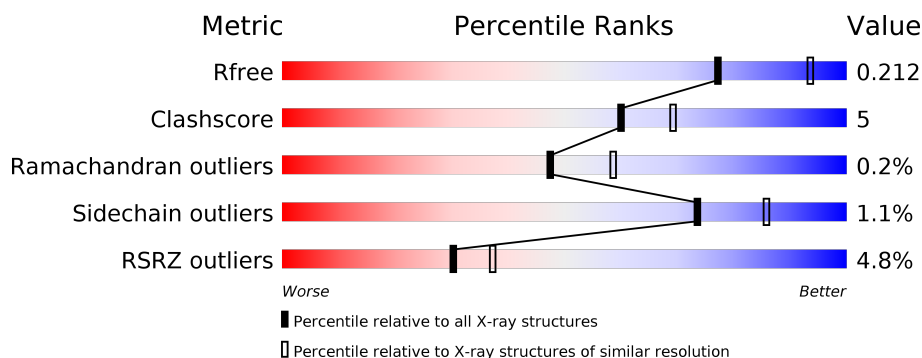
1 Overall quality at a glance

The following experimental techniques were used to determine the structure:

X-RAY DIFFRACTION

The reported resolution of this entry is 2.30 Å.

Percentile scores (ranging between 0-100) for global validation metrics of the entry are shown in the following graphic. The table shows the number of entries on which the scores are based.



Metric	Whole archive (#Entries)	Similar resolution (#Entries, resolution range(Å))
R_{free}	130704	5042 (2.30-2.30)
Clashscore	141614	5643 (2.30-2.30)
Ramachandran outliers	138981	5575 (2.30-2.30)
Sidechain outliers	138945	5575 (2.30-2.30)
RSRZ outliers	127900	4938 (2.30-2.30)

The table below summarises the geometric issues observed across the polymeric chains and their fit to the electron density. The red, orange, yellow and green segments on the lower bar indicate the fraction of residues that contain outliers for ≥ 3 , 2, 1 and 0 types of geometric quality criteria respectively. A grey segment represents the fraction of residues that are not modelled. The numeric value for each fraction is indicated below the corresponding segment, with a dot representing fractions $\leq 5\%$. The upper red bar (where present) indicates the fraction of residues that have poor fit to the electron density. The numeric value is given above the bar.

Mol	Chain	Length	Quality of chain
1	H	222	<div> <div>4%</div> <div> <div></div> <div>89%</div> <div>11%</div> </div> </div>
2	L	214	<div> <div>6%</div> <div> <div></div> <div>91%</div> <div>8%</div> </div> </div>

2 Entry composition [i](#)

There are 7 unique types of molecules in this entry. The entry contains 3604 atoms, of which 0 are hydrogens and 0 are deuteriums.

In the tables below, the ZeroOcc column contains the number of atoms modelled with zero occupancy, the AltConf column contains the number of residues with at least one atom in alternate conformation and the Trace column contains the number of residues modelled with at most 2 atoms.

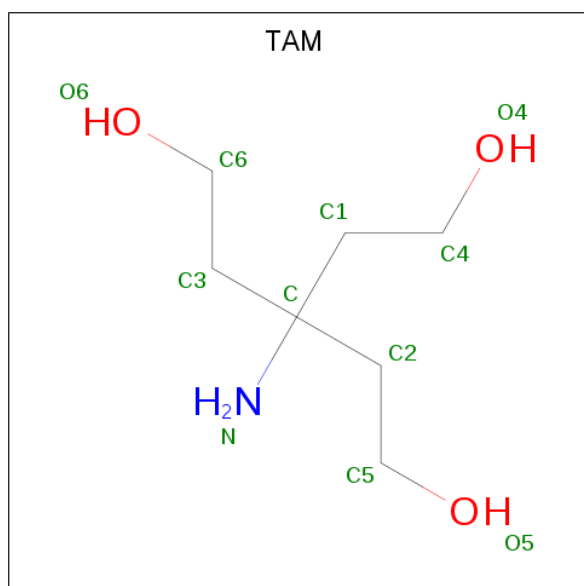
- Molecule 1 is a protein called RM20J Fab heavy chain.

Mol	Chain	Residues	Atoms					ZeroOcc	AltConf	Trace
1	H	222	Total	C	N	O	S	0	2	0
			1669	1048	283	333	5			

- Molecule 2 is a protein called RM20J Fab light chain.

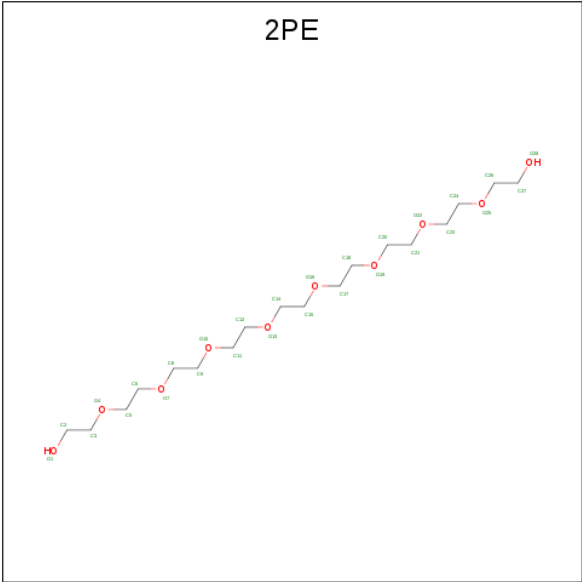
Mol	Chain	Residues	Atoms					ZeroOcc	AltConf	Trace
2	L	214	Total	C	N	O	S	0	1	0
			1649	1031	276	336	6			

- Molecule 3 is TRIS(HYDROXYETHYL)AMINOMETHANE (three-letter code: TAM) (formula: C₇H₁₇NO₃).



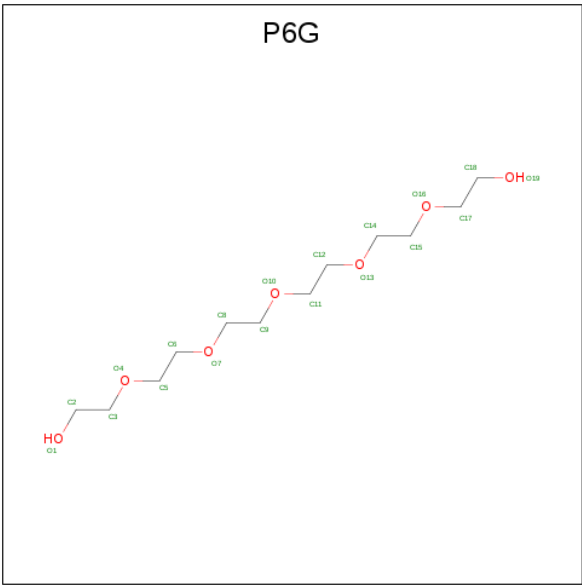
Mol	Chain	Residues	Atoms				ZeroOcc	AltConf
3	H	1	Total	C	N	O	0	0
			11	7	1	3		

- Molecule 4 is NONAETHYLENE GLYCOL (three-letter code: 2PE) (formula: C₁₈H₃₈O₁₀).



Mol	Chain	Residues	Atoms			ZeroOcc	AltConf
4	H	1	Total	C	O	0	0
			7	5	2		
4	L	1	Total	C	O	0	0
			17	11	6		
4	L	1	Total	C	O	0	0
			7	4	3		

- Molecule 5 is HEXAETHYLENE GLYCOL (three-letter code: P6G) (formula: C₁₂H₂₆O₇).



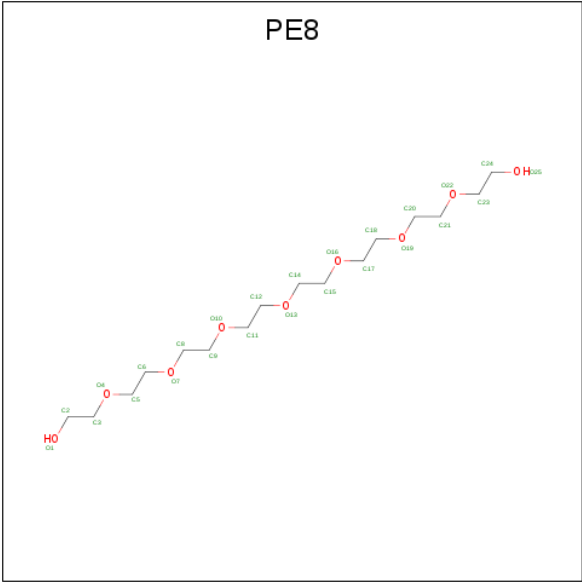
Mol	Chain	Residues	Atoms			ZeroOcc	AltConf
5	H	1	Total	C	O	0	0
			6	4	2		

Continued on next page...

Continued from previous page...

Mol	Chain	Residues	Atoms			ZeroOcc	AltConf
5	L	1	Total	C	O	0	0
			7	4	3		

- Molecule 6 is 3,6,9,12,15,18,21-HEPTAOXATRICOSANE-1,23-DIOL (three-letter code: PE8) (formula: C₁₆H₃₄O₉).



Mol	Chain	Residues	Atoms			ZeroOcc	AltConf
6	L	1	Total	C	O	0	0
			7	5	2		

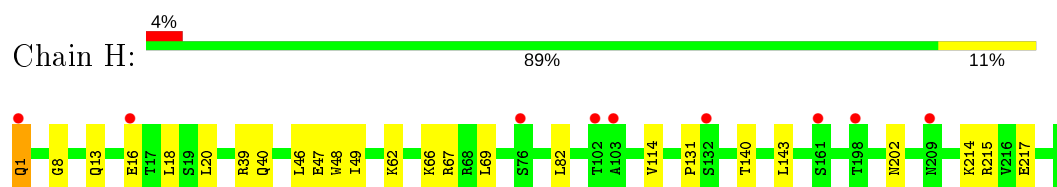
- Molecule 7 is water.

Mol	Chain	Residues	Atoms		ZeroOcc	AltConf
7	H	102	Total	O	0	0
			102	102		
7	L	122	Total	O	0	0
			122	122		

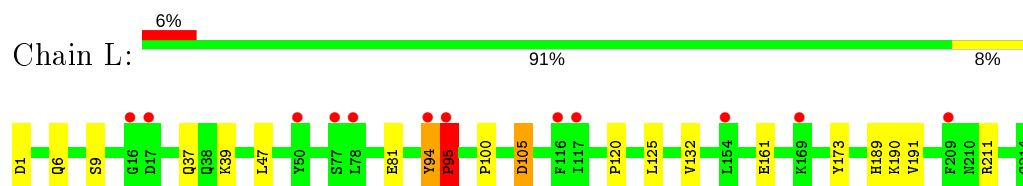
3 Residue-property plots [i](#)

These plots are drawn for all protein, RNA, DNA and oligosaccharide chains in the entry. The first graphic for a chain summarises the proportions of the various outlier classes displayed in the second graphic. The second graphic shows the sequence view annotated by issues in geometry and electron density. Residues are color-coded according to the number of geometric quality criteria for which they contain at least one outlier: green = 0, yellow = 1, orange = 2 and red = 3 or more. A red dot above a residue indicates a poor fit to the electron density ($RSRZ > 2$). Stretches of 2 or more consecutive residues without any outlier are shown as a green connector. Residues present in the sample, but not in the model, are shown in grey.

- Molecule 1: RM20J Fab heavy chain



- Molecule 2: RM20J Fab light chain



4 Data and refinement statistics

Property	Value	Source
Space group	P 43 21 2	Depositor
Cell constants a, b, c, α , β , γ	111.26Å 111.26Å 141.04Å 90.00° 90.00° 90.00°	Depositor
Resolution (Å)	35.87 – 2.30 35.87 – 2.30	Depositor EDS
% Data completeness (in resolution range)	99.9 (35.87-2.30) 99.9 (35.87-2.30)	Depositor EDS
R_{merge}	(Not available)	Depositor
R_{sym}	(Not available)	Depositor
$\langle I/\sigma(I) \rangle$ ¹	1.12 (at 2.29Å)	Xtriage
Refinement program	PHENIX 1.12_2829	Depositor
R, R_{free}	0.181 , 0.211 0.181 , 0.212	Depositor DCC
R_{free} test set	1999 reflections (5.00%)	wwPDB-VP
Wilson B-factor (Å ²)	57.4	Xtriage
Anisotropy	0.188	Xtriage
Bulk solvent k_{sol} (e/Å ³), B_{sol} (Å ²)	0.31 , 50.6	EDS
L-test for twinning ²	$\langle L \rangle = 0.48$, $\langle L^2 \rangle = 0.31$	Xtriage
Estimated twinning fraction	No twinning to report.	Xtriage
F_o, F_c correlation	0.96	EDS
Total number of atoms	3604	wwPDB-VP
Average B, all atoms (Å ²)	63.0	wwPDB-VP

Xtriage's analysis on translational NCS is as follows: *The largest off-origin peak in the Patterson function is 2.73% of the height of the origin peak. No significant pseudotranslation is detected.*

¹Intensities estimated from amplitudes.

²Theoretical values of $\langle |L| \rangle$, $\langle L^2 \rangle$ for acentric reflections are 0.5, 0.333 respectively for untwinned datasets, and 0.375, 0.2 for perfectly twinned datasets.

5 Model quality

5.1 Standard geometry

Bond lengths and bond angles in the following residue types are not validated in this section: 2PE, PE8, P6G, TAM

The Z score for a bond length (or angle) is the number of standard deviations the observed value is removed from the expected value. A bond length (or angle) with $|Z| > 5$ is considered an outlier worth inspection. RMSZ is the root-mean-square of all Z scores of the bond lengths (or angles).

Mol	Chain	Bond lengths		Bond angles	
		RMSZ	$\# Z > 5$	RMSZ	$\# Z > 5$
1	H	0.37	0/1709	0.58	0/2332
2	L	0.43	0/1685	0.74	4/2292 (0.2%)
All	All	0.40	0/3394	0.67	4/4624 (0.1%)

Chiral center outliers are detected by calculating the chiral volume of a chiral center and verifying if the center is modelled as a planar moiety or with the opposite hand. A planarity outlier is detected by checking planarity of atoms in a peptide group, atoms in a mainchain group or atoms of a sidechain that are expected to be planar.

Mol	Chain	#Chirality outliers	#Planarity outliers
2	L	0	2

There are no bond length outliers.

All (4) bond angle outliers are listed below:

Mol	Chain	Res	Type	Atoms	Z	Observed($^{\circ}$)	Ideal($^{\circ}$)
2	L	95	PRO	CA-N-CD	-18.00	86.31	111.50
2	L	95	PRO	CB-CA-C	6.76	128.91	112.00
2	L	94	TYR	CB-CA-C	5.16	120.72	110.40
2	L	95	PRO	CA-CB-CG	-5.03	94.44	104.00

There are no chirality outliers.

All (2) planarity outliers are listed below:

Mol	Chain	Res	Type	Group
2	L	94	TYR	Mainchain,Peptide

5.2 Too-close contacts ⓘ

In the following table, the Non-H and H(model) columns list the number of non-hydrogen atoms and hydrogen atoms in the chain respectively. The H(added) column lists the number of hydrogen atoms added and optimized by MolProbity. The Clashes column lists the number of clashes within the asymmetric unit, whereas Symm-Clashes lists symmetry related clashes.

Mol	Chain	Non-H	H(model)	H(added)	Clashes	Symm-Clashes
1	H	1669	0	1638	16	0
2	L	1649	0	1594	16	0
3	H	11	0	17	0	0
4	H	7	0	6	1	0
4	L	24	0	28	5	0
5	H	6	0	6	0	0
5	L	7	0	8	0	0
6	L	7	0	6	0	0
7	H	102	0	0	3	0
7	L	122	0	0	1	0
All	All	3604	0	3303	31	0

The all-atom clashscore is defined as the number of clashes found per 1000 atoms (including hydrogen atoms). The all-atom clashscore for this structure is 5.

All (31) close contacts within the same asymmetric unit are listed below, sorted by their clash magnitude.

Atom-1	Atom-2	Interatomic distance (Å)	Clash overlap (Å)
1:H:13:GLN:HB2	1:H:16:GLU:HG3	1.67	0.76
1:H:131:PRO:O	7:H:401:HOH:O	2.11	0.68
7:H:408:HOH:O	2:L:95:PRO:HG3	1.95	0.66
1:H:140:THR:HG22	4:H:302:2PE:H142	1.76	0.66
1:H:66:LYS:HG3	1:H:67[B]:ARG:HD2	1.81	0.62
2:L:105:ASP:OD2	2:L:173:TYR:OH	2.18	0.60
1:H:215:ARG:NH1	1:H:217:GLU:OE2	2.36	0.58
1:H:8:GLY:HA3	1:H:20:LEU:HD23	1.88	0.56
2:L:1:ASP:N	4:L:302:2PE:H61	2.25	0.51
2:L:9:SER:HB2	4:L:303:2PE:H172	1.94	0.50
2:L:6:GLN:HB2	2:L:100:PRO:HD2	1.94	0.49
1:H:69:LEU:HD11	1:H:82:LEU:HD11	1.94	0.48
1:H:48:TRP:CZ3	2:L:95:PRO:HD3	2.47	0.48
2:L:37:GLN:HB2	2:L:47:LEU:HD11	1.94	0.48
1:H:131:PRO:HD3	1:H:143:LEU:HB3	1.97	0.47
2:L:125:LEU:HD23	2:L:125:LEU:HA	1.78	0.46
2:L:189:HIS:O	2:L:211:ARG:HD3	2.16	0.46

Continued on next page...

Continued from previous page...

Atom-1	Atom-2	Interatomic distance (Å)	Clash overlap (Å)
1:H:1[B]:GLN:NE2	7:H:402:HOH:O	2.20	0.46
1:H:39:ARG:HD3	1:H:49:ILE:HD11	1.98	0.46
2:L:1:ASP:H3	4:L:302:2PE:H82	1.81	0.45
2:L:1:ASP:N	4:L:302:2PE:H112	2.33	0.44
1:H:18:LEU:HD13	1:H:114:VAL:HG11	1.98	0.44
2:L:190:LYS:HG2	2:L:191:VAL:HG23	1.99	0.44
1:H:40:GLN:HB2	1:H:46:LEU:HD23	2.00	0.44
2:L:161:GLU:HG3	7:L:514:HOH:O	2.17	0.44
2:L:120:PRO:HD3	2:L:132:VAL:HG22	2.01	0.42
1:H:214:LYS:HA	1:H:214:LYS:HD2	1.97	0.41
2:L:39:LYS:HE2	2:L:81:GLU:O	2.20	0.41
1:H:47:GLU:OE2	1:H:62:LYS:HE2	2.20	0.41
2:L:1:ASP:H3	4:L:302:2PE:H61	1.86	0.40

There are no symmetry-related clashes.

5.3 Torsion angles [i](#)

5.3.1 Protein backbone [i](#)

In the following table, the Percentiles column shows the percent Ramachandran outliers of the chain as a percentile score with respect to all X-ray entries followed by that with respect to entries of similar resolution.

The Analysed column shows the number of residues for which the backbone conformation was analysed, and the total number of residues.

Mol	Chain	Analysed	Favoured	Allowed	Outliers	Percentiles	
1	H	221/222 (100%)	214 (97%)	7 (3%)	0	100	100
2	L	213/214 (100%)	204 (96%)	8 (4%)	1 (0%)	29	35
All	All	434/436 (100%)	418 (96%)	15 (4%)	1 (0%)	47	58

All (1) Ramachandran outliers are listed below:

Mol	Chain	Res	Type
2	L	95	PRO

5.3.2 Protein sidechains ⓘ

In the following table, the Percentiles column shows the percent sidechain outliers of the chain as a percentile score with respect to all X-ray entries followed by that with respect to entries of similar resolution.

The Analysed column shows the number of residues for which the sidechain conformation was analysed, and the total number of residues.

Mol	Chain	Analysed	Rotameric	Outliers	Percentiles	
1	H	189/187 (101%)	186 (98%)	3 (2%)	62	78
2	L	188/187 (100%)	186 (99%)	2 (1%)	73	86
All	All	377/374 (101%)	372 (99%)	5 (1%)	73	82

All (5) residues with a non-rotameric sidechain are listed below:

Mol	Chain	Res	Type
1	H	1[A]	GLN
1	H	1[B]	GLN
1	H	202	ASN
2	L	95	PRO
2	L	105	ASP

Some sidechains can be flipped to improve hydrogen bonding and reduce clashes. All (1) such sidechains are listed below:

Mol	Chain	Res	Type
1	H	40	GLN

5.3.3 RNA ⓘ

There are no RNA molecules in this entry.

5.4 Non-standard residues in protein, DNA, RNA chains ⓘ

There are no non-standard protein/DNA/RNA residues in this entry.

5.5 Carbohydrates ⓘ

There are no monosaccharides in this entry.

5.6 Ligand geometry

7 ligands are modelled in this entry.

In the following table, the Counts columns list the number of bonds (or angles) for which Mogul statistics could be retrieved, the number of bonds (or angles) that are observed in the model and the number of bonds (or angles) that are defined in the Chemical Component Dictionary. The Link column lists molecule types, if any, to which the group is linked. The Z score for a bond length (or angle) is the number of standard deviations the observed value is removed from the expected value. A bond length (or angle) with $|Z| > 2$ is considered an outlier worth inspection. RMSZ is the root-mean-square of all Z scores of the bond lengths (or angles).

Mol	Type	Chain	Res	Link	Bond lengths			Bond angles		
					Counts	RMSZ	# Z > 2	Counts	RMSZ	# Z > 2
4	2PE	L	303	-	6,6,27	0.48	0	5,5,26	0.34	0
5	P6G	L	304	-	6,6,18	0.49	0	5,5,17	0.33	0
4	2PE	L	302	-	16,16,27	0.53	0	15,15,26	0.30	0
5	P6G	H	303	-	5,5,18	0.53	0	4,4,17	0.24	0
4	2PE	H	302	-	6,6,27	0.55	0	5,5,26	0.31	0
3	TAM	H	301	-	7,10,10	1.09	0	9,12,12	0.52	0
6	PE8	L	301	-	6,6,24	0.52	0	5,5,23	0.47	0

In the following table, the Chirals column lists the number of chiral outliers, the number of chiral centers analysed, the number of these observed in the model and the number defined in the Chemical Component Dictionary. Similar counts are reported in the Torsion and Rings columns. '-' means no outliers of that kind were identified.

Mol	Type	Chain	Res	Link	Chirals	Torsions	Rings
4	2PE	L	303	-	-	3/4/4/25	-
5	P6G	L	304	-	-	3/4/4/16	-
4	2PE	L	302	-	-	6/14/14/25	-
5	P6G	H	303	-	-	2/3/3/16	-
4	2PE	H	302	-	-	0/4/4/25	-
3	TAM	H	301	-	-	1/12/12/12	-
6	PE8	L	301	-	-	1/4/4/22	-

There are no bond length outliers.

There are no bond angle outliers.

There are no chirality outliers.

All (16) torsion outliers are listed below:

Mol	Chain	Res	Type	Atoms
3	H	301	TAM	C-C2-C5-O5

Continued on next page...

Continued from previous page...

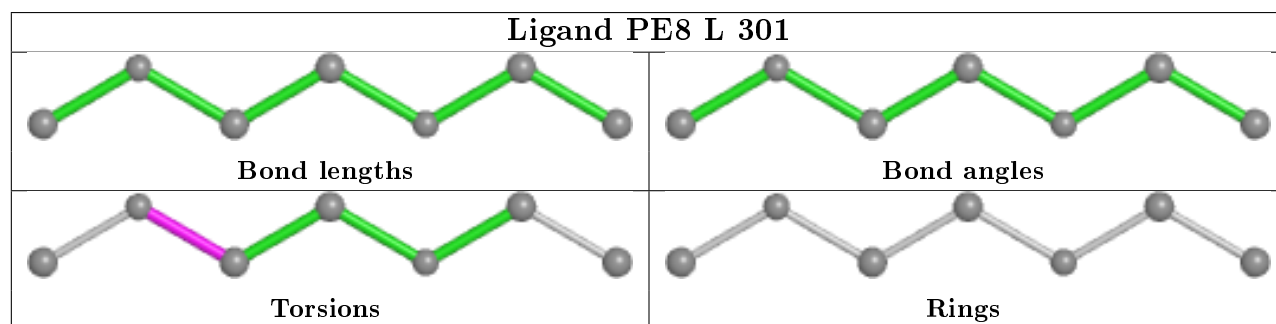
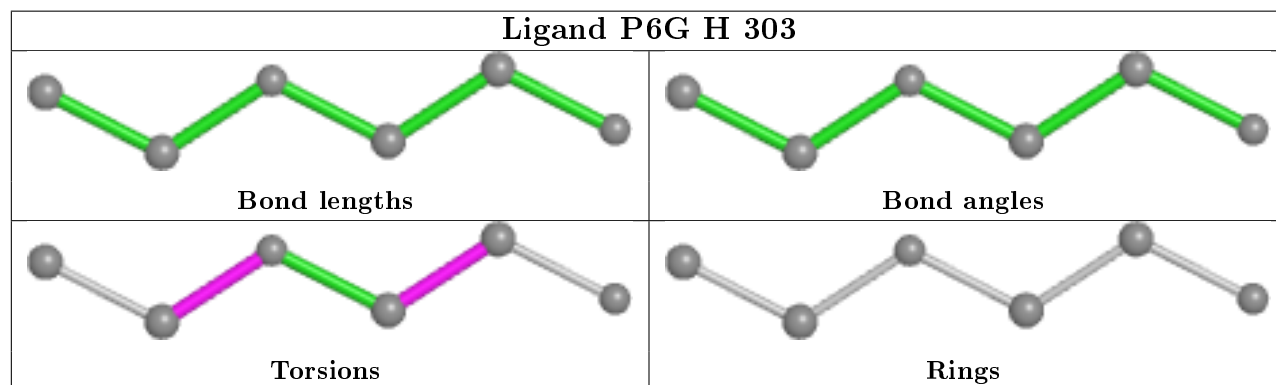
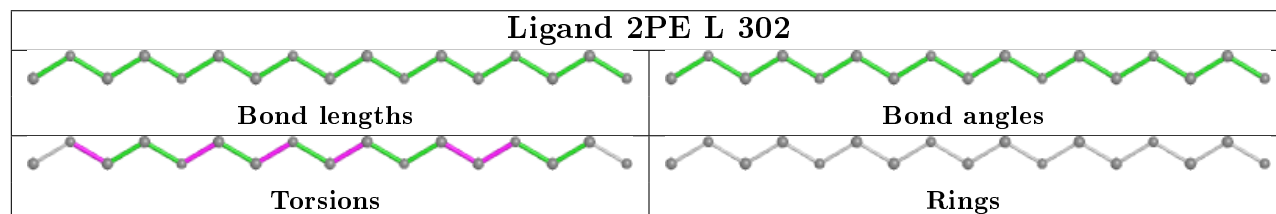
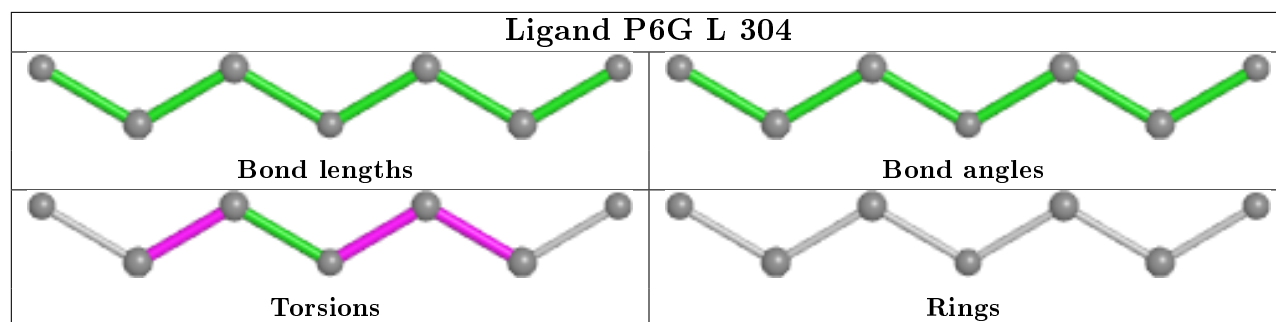
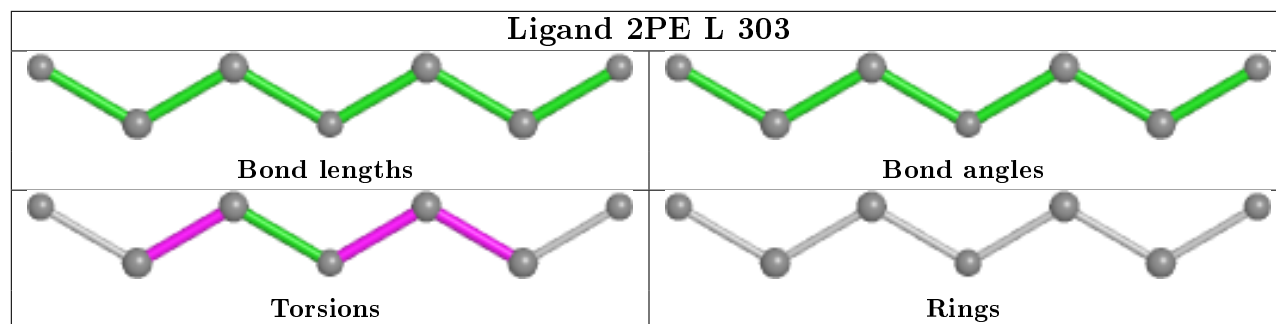
Mol	Chain	Res	Type	Atoms
4	L	303	2PE	O16-C17-C18-O19
5	L	304	P6G	O10-C11-C12-O13
4	L	302	2PE	O10-C11-C12-O13
5	L	304	P6G	O7-C8-C9-O10
6	L	301	PE8	C17-C18-O19-C20
4	L	303	2PE	O13-C14-C15-O16
4	L	302	2PE	C17-C18-O19-C20
4	L	303	2PE	C14-C15-O16-C17
4	L	302	2PE	C15-C14-O13-C12
4	L	302	2PE	C14-C15-O16-C17
5	H	303	P6G	C15-C14-O13-C12
5	H	303	P6G	O10-C11-C12-O13
4	L	302	2PE	C9-C8-O7-C6
4	L	302	2PE	O7-C8-C9-O10
5	L	304	P6G	C8-C9-O10-C11

There are no ring outliers.

3 monomers are involved in 6 short contacts:

Mol	Chain	Res	Type	Clashes	Symm-Clashes
4	L	303	2PE	1	0
4	L	302	2PE	4	0
4	H	302	2PE	1	0

The following is a two-dimensional graphical depiction of Mogul quality analysis of bond lengths, bond angles, torsion angles, and ring geometry for all instances of the Ligand of Interest. In addition, ligands with molecular weight > 250 and outliers as shown on the validation Tables will also be included. For torsion angles, if less than 5% of the Mogul distribution of torsion angles is within 10 degrees of the torsion angle in question, then that torsion angle is considered an outlier. Any bond that is central to one or more torsion angles identified as an outlier by Mogul will be highlighted in the graph. For rings, the root-mean-square deviation (RMSD) between the ring in question and similar rings identified by Mogul is calculated over all ring torsion angles. If the average RMSD is greater than 60 degrees and the minimal RMSD between the ring in question and any Mogul-identified rings is also greater than 60 degrees, then that ring is considered an outlier. The outliers are highlighted in purple. The color gray indicates Mogul did not find sufficient equivalents in the CSD to analyse the geometry.



5.7 Other polymers

There are no such residues in this entry.

5.8 Polymer linkage issues

There are no chain breaks in this entry.

6 Fit of model and data

6.1 Protein, DNA and RNA chains

In the following table, the column labelled ‘#RSRZ> 2’ contains the number (and percentage) of RSRZ outliers, followed by percent RSRZ outliers for the chain as percentile scores relative to all X-ray entries and entries of similar resolution. The OWAB column contains the minimum, median, 95th percentile and maximum values of the occupancy-weighted average B-factor per residue. The column labelled ‘Q< 0.9’ lists the number of (and percentage) of residues with an average occupancy less than 0.9.

Mol	Chain	Analysed	<RSRZ>	#RSRZ>2	OWAB(Å ²)	Q<0.9
1	H	222/222 (100%)	0.24	9 (4%) 37 44	47, 62, 88, 102	0
2	L	214/214 (100%)	0.25	12 (5%) 24 30	45, 58, 80, 99	0
All	All	436/436 (100%)	0.24	21 (4%) 30 37	45, 60, 84, 102	0

All (21) RSRZ outliers are listed below:

Mol	Chain	Res	Type	RSRZ
1	H	209	ASN	3.2
1	H	1[A]	GLN	3.2
1	H	198	THR	3.0
2	L	94	TYR	2.8
1	H	76	SER	2.7
2	L	16	GLY	2.7
1	H	102	THR	2.5
2	L	117	ILE	2.3
2	L	116	PHE	2.3
2	L	154	LEU	2.3
1	H	161	SER	2.3
1	H	16	GLU	2.3
2	L	17	ASP	2.2
2	L	78	LEU	2.1
2	L	50	TYR	2.1
2	L	209	PHE	2.1
2	L	169	LYS	2.1
2	L	77	SER	2.1
1	H	103	ALA	2.1
1	H	132	SER	2.1
2	L	95	PRO	2.0

6.2 Non-standard residues in protein, DNA, RNA chains [i](#)

There are no non-standard protein/DNA/RNA residues in this entry.

6.3 Carbohydrates [i](#)

There are no monosaccharides in this entry.

6.4 Ligands [i](#)

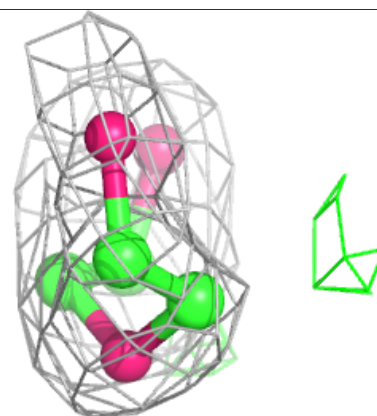
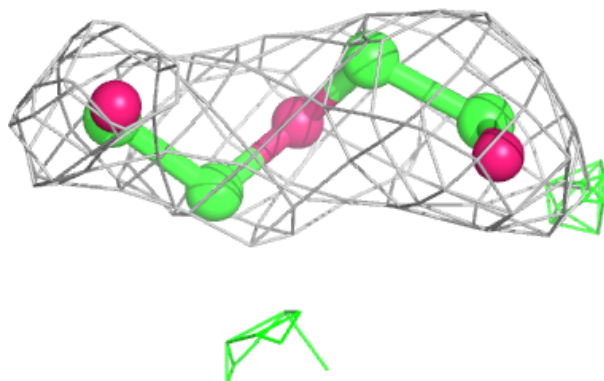
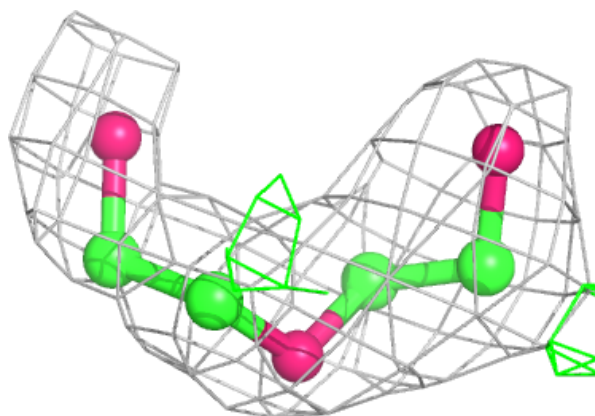
In the following table, the Atoms column lists the number of modelled atoms in the group and the number defined in the chemical component dictionary. The B-factors column lists the minimum, median, 95th percentile and maximum values of B factors of atoms in the group. The column labelled 'Q< 0.9' lists the number of atoms with occupancy less than 0.9.

Mol	Type	Chain	Res	Atoms	RSCC	RSR	B-factors(\AA^2)	Q<0.9
3	TAM	H	301	11/11	0.68	0.38	89,119,127,127	0
5	P6G	L	304	7/19	0.76	0.26	92,96,102,103	0
5	P6G	H	303	6/19	0.78	0.21	84,102,105,106	0
4	2PE	L	303	7/28	0.80	0.19	94,97,99,99	0
4	2PE	L	302	17/28	0.80	0.19	75,85,95,98	0
6	PE8	L	301	7/25	0.86	0.63	69,77,82,86	0
4	2PE	H	302	7/28	0.87	0.26	87,96,102,103	0

The following is a graphical depiction of the model fit to experimental electron density of all instances of the Ligand of Interest. In addition, ligands with molecular weight > 250 and outliers as shown on the geometry validation Tables will also be included. Each fit is shown from different orientation to approximate a three-dimensional view.

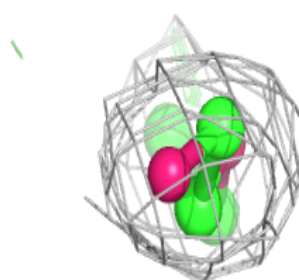
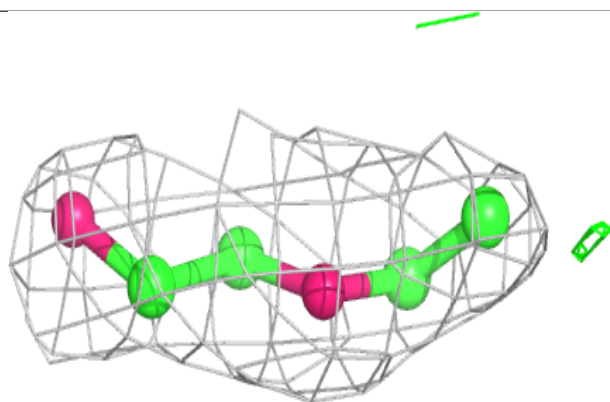
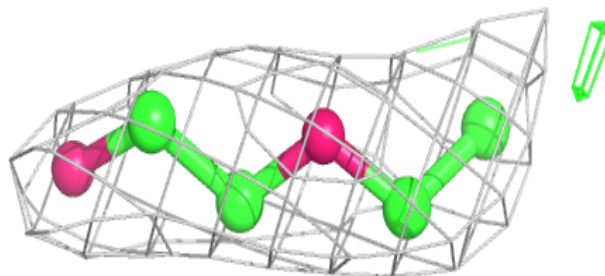
Electron density around P6G L 304:

$2mF_o-DF_c$ (at 0.7 rmsd) in gray
 mF_o-DF_c (at 3 rmsd) in purple (negative)
and green (positive)

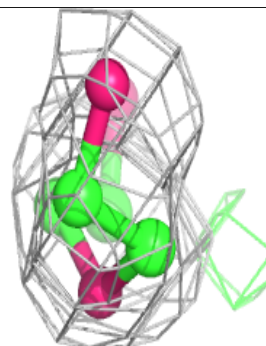
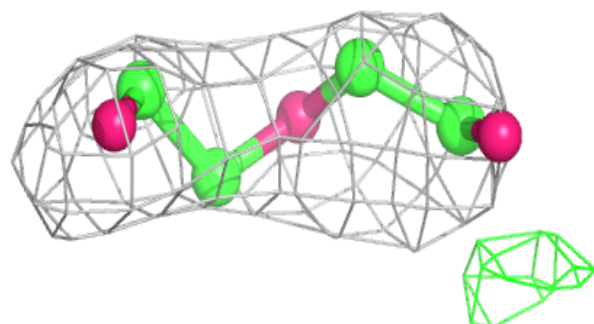
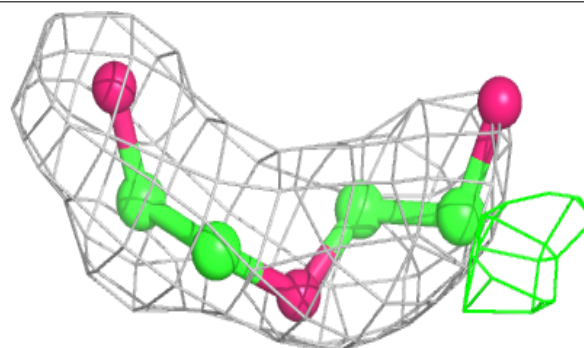


Electron density around P6G H 303:

$2mF_o - DF_c$ (at 0.7 rmsd) in gray
 $mF_o - DF_c$ (at 3 rmsd) in purple (negative)
and green (positive)

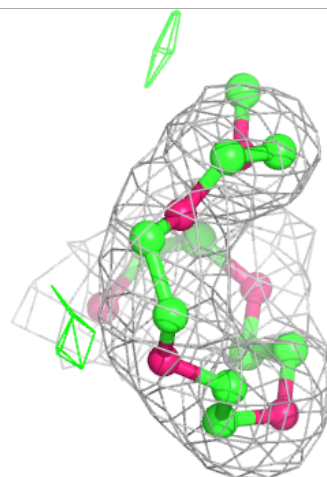
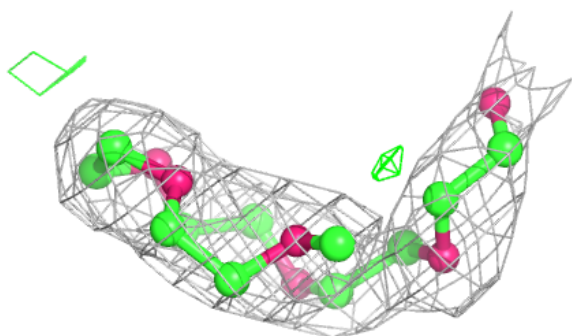
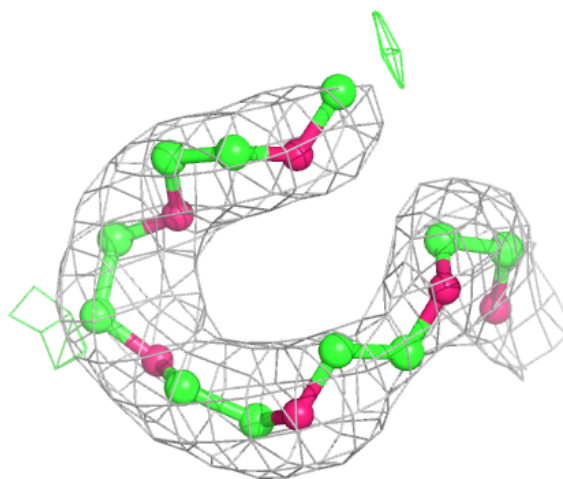
**Electron density around 2PE L 303:**

$2mF_o - DF_c$ (at 0.7 rmsd) in gray
 $mF_o - DF_c$ (at 3 rmsd) in purple (negative)
and green (positive)



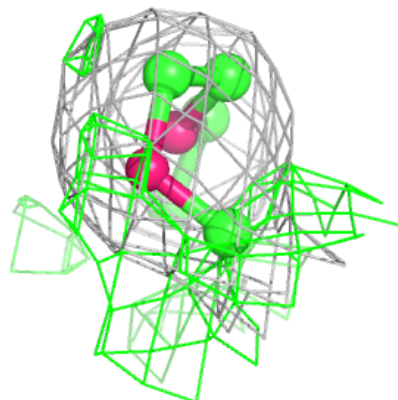
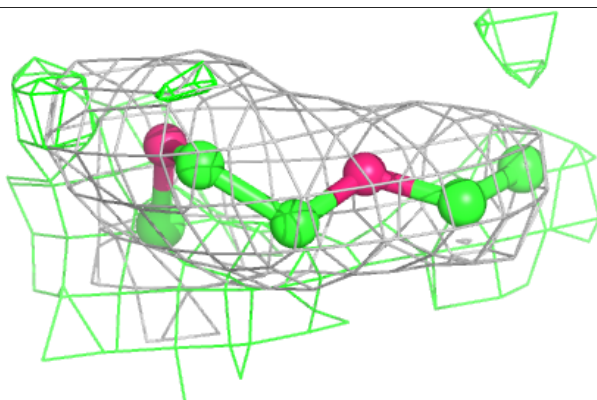
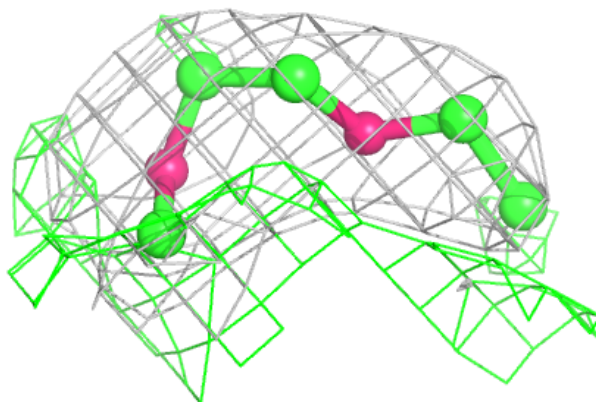
Electron density around 2PE L 302:

$2mF_o-DF_c$ (at 0.7 rmsd) in gray
 mF_o-DF_c (at 3 rmsd) in purple (negative)
and green (positive)



Electron density around PE8 L 301:

$2mF_o-DF_c$ (at 0.7 rmsd) in gray
 mF_o-DF_c (at 3 rmsd) in purple (negative)
and green (positive)



6.5 Other polymers [i](#)

There are no such residues in this entry.