



Full wwPDB X-ray Structure Validation Report ⓘ

Jun 6, 2022 – 06:11 PM EDT

PDB ID : 6VPF
Title : Estrogen Receptor Alpha Ligand Binding Domain in Complex with the Selective Estrogen Receptor Modulator Clomiphene
Authors : Fanning, S.W.; Greene, G.L.
Deposited on : 2020-02-03
Resolution : 1.60 Å(reported)

This is a Full wwPDB X-ray Structure Validation Report for a publicly released PDB entry.

We welcome your comments at validation@mail.wwpdb.org

A user guide is available at

<https://www.wwpdb.org/validation/2017/XrayValidationReportHelp>

with specific help available everywhere you see the ⓘ symbol.

The following versions of software and data (see [references ⓘ](#)) were used in the production of this report:

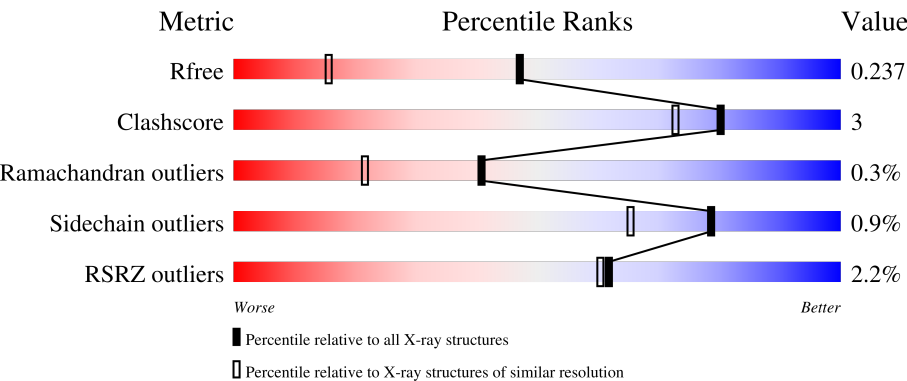
MolProbity : 4.02b-467
Mogul : 1.8.5 (274361), CSD as541be (2020)
Xtriage (Phenix) : 1.13
EDS : 2.28.1
buster-report : 1.1.7 (2018)
Percentile statistics : 20191225.v01 (using entries in the PDB archive December 25th 2019)
Refmac : 5.8.0158
CCP4 : 7.0.044 (Gargrove)
Ideal geometry (proteins) : Engh & Huber (2001)
Ideal geometry (DNA, RNA) : Parkinson et al. (1996)
Validation Pipeline (wwPDB-VP) : 2.28.1

1 Overall quality at a glance i

The following experimental techniques were used to determine the structure:
X-RAY DIFFRACTION

The reported resolution of this entry is 1.60 Å.

Percentile scores (ranging between 0-100) for global validation metrics of the entry are shown in the following graphic. The table shows the number of entries on which the scores are based.



Metric	Whole archive (#Entries)	Similar resolution (#Entries, resolution range(Å))
R _{free}	130704	3398 (1.60-1.60)
Clashscore	141614	3665 (1.60-1.60)
Ramachandran outliers	138981	3564 (1.60-1.60)
Sidechain outliers	138945	3563 (1.60-1.60)
RSRZ outliers	127900	3321 (1.60-1.60)

The table below summarises the geometric issues observed across the polymeric chains and their fit to the electron density. The red, orange, yellow and green segments of the lower bar indicate the fraction of residues that contain outliers for ≥ 3 , 2, 1 and 0 types of geometric quality criteria respectively. A grey segment represents the fraction of residues that are not modelled. The numeric value for each fraction is indicated below the corresponding segment, with a dot representing fractions $\leq 5\%$. The upper red bar (where present) indicates the fraction of residues that have poor fit to the electron density. The numeric value is given above the bar.

Mol	Chain	Length	Quality of chain
1	A	263	<div><div>0.0%</div><div><div></div><div>79%</div><div>10%</div><div>10%</div></div></div>
1	B	263	<div><div>2.0%</div><div><div></div><div>83%</div><div>8%</div><div>8%</div></div></div>
1	C	263	<div><div>3.0%</div><div><div></div><div>83%</div><div>7%</div><div>10%</div></div></div>
1	D	263	<div><div>2.0%</div><div><div></div><div>86%</div><div>•</div><div>10%</div></div></div>

2 Entry composition

There are 3 unique types of molecules in this entry. The entry contains 8134 atoms, of which 0 are hydrogens and 0 are deuteriums.

In the tables below, the ZeroOcc column contains the number of atoms modelled with zero occupancy, the AltConf column contains the number of residues with at least one atom in alternate conformation and the Trace column contains the number of residues modelled with at most 2 atoms.

- Molecule 1 is a protein called Estrogen receptor.

Mol	Chain	Residues	Atoms					ZeroOcc	AltConf	Trace
1	B	243	Total	C	N	O	S	0	3	0
			1923	1237	326	344	16			
1	A	236	Total	C	N	O	S	0	5	0
			1875	1205	314	339	17			
1	C	237	Total	C	N	O	S	0	2	0
			1873	1205	313	339	16			
1	D	236	Total	C	N	O	S	0	7	0
			1902	1220	319	346	17			

There are 72 discrepancies between the modelled and reference sequences:

Chain	Residue	Modelled	Actual	Comment	Reference
B	292	HIS	-	expression tag	UNP P03372
B	293	HIS	-	expression tag	UNP P03372
B	294	HIS	-	expression tag	UNP P03372
B	295	HIS	-	expression tag	UNP P03372
B	296	HIS	-	expression tag	UNP P03372
B	297	HIS	-	expression tag	UNP P03372
B	298	GLU	-	expression tag	UNP P03372
B	299	ASN	-	expression tag	UNP P03372
B	300	LEU	-	expression tag	UNP P03372
B	301	TYR	-	expression tag	UNP P03372
B	302	PHE	-	expression tag	UNP P03372
B	303	GLN	-	expression tag	UNP P03372
B	304	SER	-	expression tag	UNP P03372
B	305	MET	-	expression tag	UNP P03372
B	381	SER	CYS	conflict	UNP P03372
B	417	SER	CYS	conflict	UNP P03372
B	530	SER	CYS	conflict	UNP P03372
B	536	SER	LEU	conflict	UNP P03372
A	292	HIS	-	expression tag	UNP P03372
A	293	HIS	-	expression tag	UNP P03372
A	294	HIS	-	expression tag	UNP P03372

Continued on next page...

Continued from previous page...

Chain	Residue	Modelled	Actual	Comment	Reference
A	295	HIS	-	expression tag	UNP P03372
A	296	HIS	-	expression tag	UNP P03372
A	297	HIS	-	expression tag	UNP P03372
A	298	GLU	-	expression tag	UNP P03372
A	299	ASN	-	expression tag	UNP P03372
A	300	LEU	-	expression tag	UNP P03372
A	301	TYR	-	expression tag	UNP P03372
A	302	PHE	-	expression tag	UNP P03372
A	303	GLN	-	expression tag	UNP P03372
A	304	SER	-	expression tag	UNP P03372
A	305	MET	-	expression tag	UNP P03372
A	381	SER	CYS	conflict	UNP P03372
A	417	SER	CYS	conflict	UNP P03372
A	530	SER	CYS	conflict	UNP P03372
A	536	SER	LEU	conflict	UNP P03372
C	292	HIS	-	expression tag	UNP P03372
C	293	HIS	-	expression tag	UNP P03372
C	294	HIS	-	expression tag	UNP P03372
C	295	HIS	-	expression tag	UNP P03372
C	296	HIS	-	expression tag	UNP P03372
C	297	HIS	-	expression tag	UNP P03372
C	298	GLU	-	expression tag	UNP P03372
C	299	ASN	-	expression tag	UNP P03372
C	300	LEU	-	expression tag	UNP P03372
C	301	TYR	-	expression tag	UNP P03372
C	302	PHE	-	expression tag	UNP P03372
C	303	GLN	-	expression tag	UNP P03372
C	304	SER	-	expression tag	UNP P03372
C	305	MET	-	expression tag	UNP P03372
C	381	SER	CYS	conflict	UNP P03372
C	417	SER	CYS	conflict	UNP P03372
C	530	SER	CYS	conflict	UNP P03372
C	536	SER	LEU	conflict	UNP P03372
D	292	HIS	-	expression tag	UNP P03372
D	293	HIS	-	expression tag	UNP P03372
D	294	HIS	-	expression tag	UNP P03372
D	295	HIS	-	expression tag	UNP P03372
D	296	HIS	-	expression tag	UNP P03372
D	297	HIS	-	expression tag	UNP P03372
D	298	GLU	-	expression tag	UNP P03372
D	299	ASN	-	expression tag	UNP P03372
D	300	LEU	-	expression tag	UNP P03372

Continued on next page...

Chain	Residue	Modelled	Actual	Comment	Reference
D	301	TYR	-	expression tag	UNP P03372
D	302	PHE	-	expression tag	UNP P03372
D	303	GLN	-	expression tag	UNP P03372
D	304	SER	-	expression tag	UNP P03372
D	305	MET	-	expression tag	UNP P03372
D	381	SER	CYS	conflict	UNP P03372
D	417	SER	CYS	conflict	UNP P03372
D	530	SER	CYS	conflict	UNP P03372
D	536	SER	LEU	conflict	UNP P03372

- [illegible]

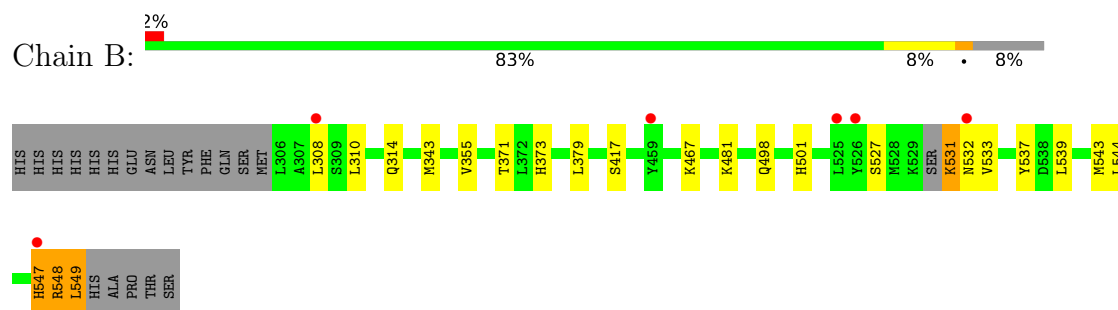
- Molecule 3 is water.

Mol	Chain	Residues	Atoms		ZeroOcc	AltConf
3	B	99	Total 99	O 99	0	0
3	A	120	Total 120	O 120	0	0
3	C	121	Total 121	O 121	0	0
3	D	105	Total 105	O 105	0	0

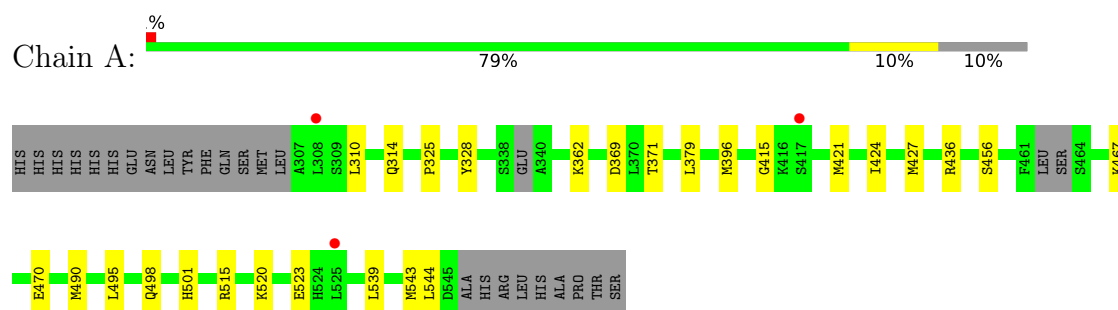
3 Residue-property plots [i](#)

These plots are drawn for all protein, RNA, DNA and oligosaccharide chains in the entry. The first graphic for a chain summarises the proportions of the various outlier classes displayed in the second graphic. The second graphic shows the sequence view annotated by issues in geometry and electron density. Residues are color-coded according to the number of geometric quality criteria for which they contain at least one outlier: green = 0, yellow = 1, orange = 2 and red = 3 or more. A red dot above a residue indicates a poor fit to the electron density ($RSRZ > 2$). Stretches of 2 or more consecutive residues without any outlier are shown as a green connector. Residues present in the sample, but not in the model, are shown in grey.

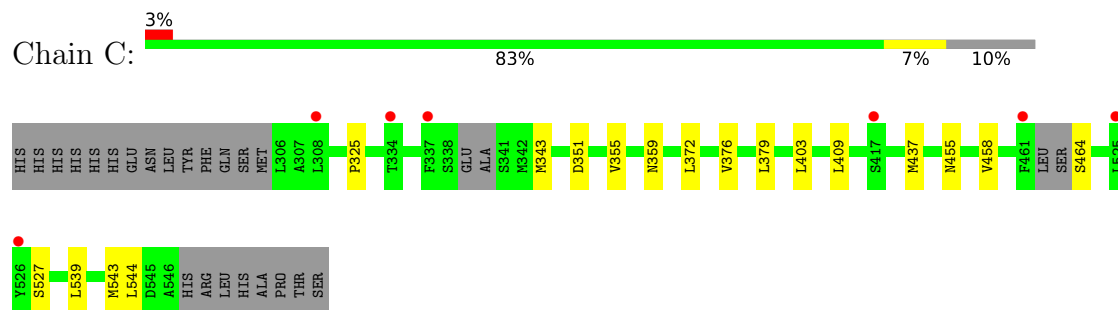
- Molecule 1: Estrogen receptor



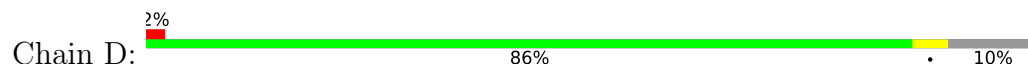
- Molecule 1: Estrogen receptor

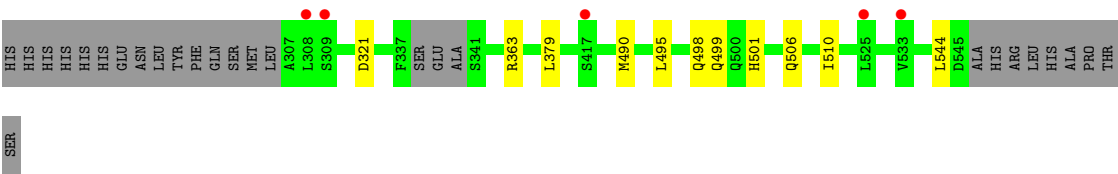


- Molecule 1: Estrogen receptor



- Molecule 1: Estrogen receptor





4 Data and refinement statistics

Property	Value	Source
Space group	P 32	Depositor
Cell constants a, b, c, α , β , γ	58.33Å 58.33Å 275.88Å 90.00° 90.00° 120.00°	Depositor
Resolution (Å)	49.69 – 1.60 49.69 – 1.60	Depositor EDS
% Data completeness (in resolution range)	58.5 (49.69-1.60) 58.5 (49.69-1.60)	Depositor EDS
R_{merge}	(Not available)	Depositor
R_{sym}	(Not available)	Depositor
$\langle I/\sigma(I) \rangle$ ¹	1.46 (at 1.60Å)	Xtriage
Refinement program	PHENIX 1.9_1692+SVN	Depositor
R, R_{free}	0.201 , 0.234 0.205 , 0.237	Depositor DCC
R_{free} test set	4059 reflections (5.03%)	wwPDB-VP
Wilson B-factor (Å ²)	14.5	Xtriage
Anisotropy	0.103	Xtriage
Bulk solvent k_{sol} (e/Å ³), B_{sol} (Å ²)	0.35 , 26.0	EDS
L-test for twinning ²	$\langle L \rangle = 0.51$, $\langle L^2 \rangle = 0.35$	Xtriage
Estimated twinning fraction	0.478 for -h,-k,l 0.488 for h,-h-k,-l 0.487 for -k,-h,-l	Xtriage
F_o, F_c correlation	0.95	EDS
Total number of atoms	8134	wwPDB-VP
Average B, all atoms (Å ²)	24.0	wwPDB-VP

Xtriage's analysis on translational NCS is as follows: *The largest off-origin peak in the Patterson function is 4.69% of the height of the origin peak. No significant pseudotranslation is detected.*

¹Intensities estimated from amplitudes.

²Theoretical values of $\langle |L| \rangle$, $\langle L^2 \rangle$ for acentric reflections are 0.5, 0.333 respectively for untwinned datasets, and 0.375, 0.2 for perfectly twinned datasets.

5 Model quality [i](#)

5.1 Standard geometry [i](#)

Bond lengths and bond angles in the following residue types are not validated in this section: 53Q

The Z score for a bond length (or angle) is the number of standard deviations the observed value is removed from the expected value. A bond length (or angle) with $|Z| > 5$ is considered an outlier worth inspection. RMSZ is the root-mean-square of all Z scores of the bond lengths (or angles).

Mol	Chain	Bond lengths		Bond angles	
		RMSZ	# $ Z > 5$	RMSZ	# $ Z > 5$
1	A	0.29	0/1916	0.44	0/2593
1	B	0.30	0/1963	0.49	0/2659
1	C	0.29	0/1910	0.45	0/2584
1	D	0.29	0/1941	0.46	0/2626
All	All	0.29	0/7730	0.46	0/10462

There are no bond length outliers.

There are no bond angle outliers.

There are no chirality outliers.

There are no planarity outliers.

5.2 Too-close contacts [i](#)

In the following table, the Non-H and H(model) columns list the number of non-hydrogen atoms and hydrogen atoms in the chain respectively. The H(added) column lists the number of hydrogen atoms added and optimized by MolProbity. The Clashes column lists the number of clashes within the asymmetric unit, whereas Symm-Clashes lists symmetry-related clashes.

Mol	Chain	Non-H	H(model)	H(added)	Clashes	Symm-Clashes
1	A	1875	0	1885	16	0
1	B	1923	0	1950	13	0
1	C	1873	0	1895	10	0
1	D	1902	0	1919	6	0
2	A	29	0	15	0	0
2	B	29	0	15	1	0
2	C	29	0	15	1	0
2	D	29	0	16	0	0
3	A	120	0	0	1	0

Continued on next page...

Continued from previous page...

Mol	Chain	Non-H	H(model)	H(added)	Clashes	Symm-Clashes
3	B	99	0	0	0	0
3	C	121	0	0	1	0
3	D	105	0	0	0	0
All	All	8134	0	7710	41	0

The all-atom clashscore is defined as the number of clashes found per 1000 atoms (including hydrogen atoms). The all-atom clashscore for this structure is 3.

All (41) close contacts within the same asymmetric unit are listed below, sorted by their clash magnitude.

Atom-1	Atom-2	Interatomic distance (Å)	Clash overlap (Å)
1:B:343:MET:HE1	2:B:601:53Q:H7	1.72	0.71
1:A:539:LEU:O	1:A:543:MET:HG3	1.98	0.64
1:B:379:LEU:HD12	1:B:544:LEU:HD11	1.85	0.59
1:A:371:THR:HG21	1:A:467:LYS:HE3	1.87	0.56
1:C:539:LEU:O	1:C:543:MET:HG3	2.06	0.56
1:B:539:LEU:O	1:B:543:MET:HG3	2.06	0.55
1:B:547:HIS:ND1	1:B:549:LEU:HB2	2.20	0.55
1:B:548:ARG:HG2	1:A:369:ASP:HA	1.90	0.54
1:B:373:HIS:ND1	1:B:537:TYR:OH	2.33	0.54
1:D:498:GLN:HA	1:D:501[B]:HIS:CE1	2.44	0.53
1:D:379:LEU:HD12	1:D:544:LEU:HD11	1.91	0.53
1:C:379:LEU:HD12	1:C:544:LEU:HD11	1.89	0.53
1:A:379:LEU:HD12	1:A:544:LEU:HD11	1.93	0.51
1:C:355:VAL:HG22	1:C:543:MET:HE1	1.92	0.51
1:C:464:SER:N	3:C:705:HOH:O	2.45	0.49
1:A:310:LEU:HD22	1:A:314:GLN:HB3	1.95	0.48
1:A:424:ILE:HA	1:A:427:MET:HE2	1.97	0.47
1:C:403:LEU:HD12	1:C:409:LEU:HD13	1.95	0.47
1:D:495:LEU:HD22	1:D:499:GLN:HB3	1.95	0.47
1:B:531:LYS:C	1:B:533:VAL:H	2.17	0.47
1:C:372:LEU:O	1:C:376:VAL:HG23	2.14	0.47
1:A:328:TYR:OH	1:C:359:ASN:ND2	2.48	0.46
1:C:455:ASN:O	1:C:458:VAL:HG12	2.15	0.46
1:B:310:LEU:HG	1:B:314:GLN:HB3	1.99	0.44
1:B:371:THR:HG21	1:B:467:LYS:HE2	1.99	0.44
1:A:456:SER:HA	1:A:515:ARG:NH2	2.33	0.43
1:A:498:GLN:HA	1:A:501[A]:HIS:NE2	2.34	0.43
1:D:321:ASP:HB3	1:D:363:ARG:NH2	2.34	0.43
1:D:490:MET:HB3	1:D:495:LEU:HD12	2.01	0.43
1:A:490:MET:HB3	1:A:495:LEU:HD12	2.01	0.42

Continued on next page...

Continued from previous page...

Atom-1	Atom-2	Interatomic distance (Å)	Clash overlap (Å)
1:A:325:PRO:HB3	1:C:325:PRO:HB3	2.02	0.42
1:B:498:GLN:HA	1:B:501:HIS:CE1	2.55	0.42
1:B:308:LEU:O	1:B:481:LYS:HE3	2.20	0.41
1:B:547:HIS:NE2	1:A:470:GLU:OE1	2.54	0.41
1:A:362:LYS:HE3	3:A:790:HOH:O	2.20	0.41
1:A:396:MET:O	1:A:436:ARG:HD3	2.21	0.41
1:A:520:LYS:O	1:A:523:GLU:HB3	2.20	0.41
1:D:506:GLN:O	1:D:510:ILE:HG13	2.21	0.41
1:A:415:GLY:O	1:A:421:MET:HB3	2.21	0.40
1:C:351:ASP:OD1	2:C:601:53Q:N1	2.54	0.40
1:B:355:VAL:HA	1:B:543:MET:HE1	2.04	0.40

There are no symmetry-related clashes.

5.3 Torsion angles [i](#)

5.3.1 Protein backbone [i](#)

In the following table, the Percentiles column shows the percent Ramachandran outliers of the chain as a percentile score with respect to all X-ray entries followed by that with respect to entries of similar resolution.

The Analysed column shows the number of residues for which the backbone conformation was analysed, and the total number of residues.

Mol	Chain	Analysed	Favoured	Allowed	Outliers	Percentiles	
1	A	235/263 (89%)	234 (100%)	1 (0%)	0	100	100
1	B	244/263 (93%)	239 (98%)	2 (1%)	3 (1%)	13	2
1	C	233/263 (89%)	232 (100%)	1 (0%)	0	100	100
1	D	239/263 (91%)	236 (99%)	3 (1%)	0	100	100
All	All	951/1052 (90%)	941 (99%)	7 (1%)	3 (0%)	41	21

All (3) Ramachandran outliers are listed below:

Mol	Chain	Res	Type
1	B	547	HIS
1	B	532	ASN
1	B	548	ARG

5.3.2 Protein sidechains ⓘ

In the following table, the Percentiles column shows the percent sidechain outliers of the chain as a percentile score with respect to all X-ray entries followed by that with respect to entries of similar resolution.

The Analysed column shows the number of residues for which the sidechain conformation was analysed, and the total number of residues.

Mol	Chain	Analysed	Rotameric	Outliers	Percentiles	
1	A	207/238 (87%)	207 (100%)	0	100	100
1	B	211/238 (89%)	207 (98%)	4 (2%)	57	34
1	C	207/238 (87%)	204 (99%)	3 (1%)	67	47
1	D	213/238 (90%)	213 (100%)	0	100	100
All	All	838/952 (88%)	831 (99%)	7 (1%)	78	70

All (7) residues with a non-rotameric sidechain are listed below:

Mol	Chain	Res	Type
1	B	417	SER
1	B	527	SER
1	B	531	LYS
1	B	549	LEU
1	C	343	MET
1	C	437	MET
1	C	527	SER

Sometimes sidechains can be flipped to improve hydrogen bonding and reduce clashes. All (1) such sidechains are listed below:

Mol	Chain	Res	Type
1	A	476	HIS

5.3.3 RNA ⓘ

There are no RNA molecules in this entry.

5.4 Non-standard residues in protein, DNA, RNA chains ⓘ

There are no non-standard protein/DNA/RNA residues in this entry.

5.5 Carbohydrates [i](#)

There are no monosaccharides in this entry.

5.6 Ligand geometry [i](#)

4 ligands are modelled in this entry.

In the following table, the Counts columns list the number of bonds (or angles) for which Mogul statistics could be retrieved, the number of bonds (or angles) that are observed in the model and the number of bonds (or angles) that are defined in the Chemical Component Dictionary. The Link column lists molecule types, if any, to which the group is linked. The Z score for a bond length (or angle) is the number of standard deviations the observed value is removed from the expected value. A bond length (or angle) with $|Z| > 2$ is considered an outlier worth inspection. RMSZ is the root-mean-square of all Z scores of the bond lengths (or angles).

Mol	Type	Chain	Res	Link	Bond lengths			Bond angles		
					Counts	RMSZ	# Z > 2	Counts	RMSZ	# Z > 2
2	53Q	C	601	-	31,31,31	2.68	7 (22%)	37,40,40	1.29	5 (13%)
2	53Q	A	601	-	31,31,31	2.74	7 (22%)	37,40,40	1.27	5 (13%)
2	53Q	D	601	-	31,31,31	2.73	7 (22%)	37,40,40	1.42	6 (16%)
2	53Q	B	601	-	31,31,31	2.77	7 (22%)	37,40,40	1.30	5 (13%)

In the following table, the Chirals column lists the number of chiral outliers, the number of chiral centers analysed, the number of these observed in the model and the number defined in the Chemical Component Dictionary. Similar counts are reported in the Torsion and Rings columns. '-' means no outliers of that kind were identified.

Mol	Type	Chain	Res	Link	Chirals	Torsions	Rings
2	53Q	C	601	-	-	6/26/26/26	0/3/3/3
2	53Q	A	601	-	-	3/26/26/26	0/3/3/3
2	53Q	D	601	-	-	4/26/26/26	0/3/3/3
2	53Q	B	601	-	-	5/26/26/26	0/3/3/3

All (28) bond length outliers are listed below:

Mol	Chain	Res	Type	Atoms	Z	Observed(Å)	Ideal(Å)
2	D	601	53Q	C11-C10	8.64	1.54	1.38
2	B	601	53Q	C11-C10	8.25	1.53	1.38
2	A	601	53Q	C11-C10	8.16	1.53	1.38
2	C	601	53Q	C11-C10	7.97	1.53	1.38
2	B	601	53Q	C8-C9	7.45	1.52	1.39
2	D	601	53Q	C8-C9	7.45	1.52	1.39

Continued on next page...

Continued from previous page...

Mol	Chain	Res	Type	Atoms	Z	Observed(Å)	Ideal(Å)
2	A	601	53Q	C8-C9	7.40	1.52	1.39
2	C	601	53Q	C8-C9	7.09	1.51	1.39
2	B	601	53Q	C7-C6	6.81	1.52	1.38
2	C	601	53Q	C7-C6	6.81	1.52	1.38
2	A	601	53Q	C7-C6	6.79	1.52	1.38
2	D	601	53Q	C7-C6	6.53	1.51	1.38
2	B	601	53Q	O-C6	4.12	1.47	1.37
2	B	601	53Q	C20-C12	3.99	1.56	1.49
2	A	601	53Q	O-C6	3.99	1.46	1.37
2	C	601	53Q	C20-C12	3.94	1.56	1.49
2	B	601	53Q	C9-C12	3.88	1.56	1.49
2	D	601	53Q	C20-C12	3.85	1.56	1.49
2	C	601	53Q	O-C6	3.83	1.46	1.37
2	D	601	53Q	O-C6	3.71	1.46	1.37
2	A	601	53Q	C20-C12	3.67	1.55	1.49
2	C	601	53Q	C9-C12	3.63	1.55	1.49
2	A	601	53Q	C9-C12	3.38	1.55	1.49
2	D	601	53Q	C9-C12	3.25	1.55	1.49
2	B	601	53Q	C14-C13	3.02	1.53	1.48
2	A	601	53Q	C14-C13	2.84	1.53	1.48
2	D	601	53Q	C14-C13	2.63	1.53	1.48
2	C	601	53Q	C14-C13	2.52	1.53	1.48

All (21) bond angle outliers are listed below:

Mol	Chain	Res	Type	Atoms	Z	Observed(°)	Ideal(°)
2	D	601	53Q	C5-O-C6	-3.79	108.01	117.93
2	C	601	53Q	C25-C20-C12	3.47	126.42	120.91
2	B	601	53Q	C25-C20-C12	3.36	126.23	120.91
2	D	601	53Q	C8-C9-C12	-3.24	115.77	120.91
2	B	601	53Q	C21-C20-C25	-2.99	114.32	118.59
2	D	601	53Q	C21-C20-C25	-2.97	114.35	118.59
2	C	601	53Q	C21-C20-C25	-2.93	114.41	118.59
2	A	601	53Q	C25-C20-C12	2.77	125.31	120.91
2	A	601	53Q	C5-C4-N1	-2.51	106.48	113.31
2	A	601	53Q	C21-C20-C25	-2.48	115.05	118.59
2	B	601	53Q	C24-C25-C20	2.48	123.28	120.34
2	D	601	53Q	O-C5-C4	2.47	113.77	107.68
2	C	601	53Q	C14-C13-CL	2.47	118.22	113.60
2	C	601	53Q	C8-C9-C12	-2.46	117.00	120.91
2	B	601	53Q	C14-C13-CL	2.46	118.19	113.60
2	A	601	53Q	C14-C13-CL	2.43	118.14	113.60

Continued on next page...

Continued from previous page...

Mol	Chain	Res	Type	Atoms	Z	Observed(°)	Ideal(°)
2	D	601	53Q	C21-C20-C12	2.36	124.66	120.91
2	B	601	53Q	O-C5-C4	2.26	113.25	107.68
2	A	601	53Q	C8-C9-C12	-2.18	117.46	120.91
2	C	601	53Q	C24-C25-C20	2.01	122.72	120.34
2	D	601	53Q	C24-C25-C20	2.00	122.71	120.34

There are no chirality outliers.

All (18) torsion outliers are listed below:

Mol	Chain	Res	Type	Atoms
2	D	601	53Q	C5-C4-N1-C3
2	C	601	53Q	C5-C4-N1-C3
2	D	601	53Q	C11-C6-O-C5
2	D	601	53Q	C7-C6-O-C5
2	C	601	53Q	C4-C5-O-C6
2	A	601	53Q	C2-C3-N1-C26
2	B	601	53Q	C27-C26-N1-C3
2	A	601	53Q	C2-C3-N1-C4
2	B	601	53Q	C2-C3-N1-C4
2	B	601	53Q	C27-C26-N1-C4
2	C	601	53Q	C2-C3-N1-C4
2	A	601	53Q	C4-C5-O-C6
2	B	601	53Q	C4-C5-O-C6
2	C	601	53Q	C2-C3-N1-C26
2	B	601	53Q	C2-C3-N1-C26
2	D	601	53Q	N1-C4-C5-O
2	C	601	53Q	C27-C26-N1-C4
2	C	601	53Q	C27-C26-N1-C3

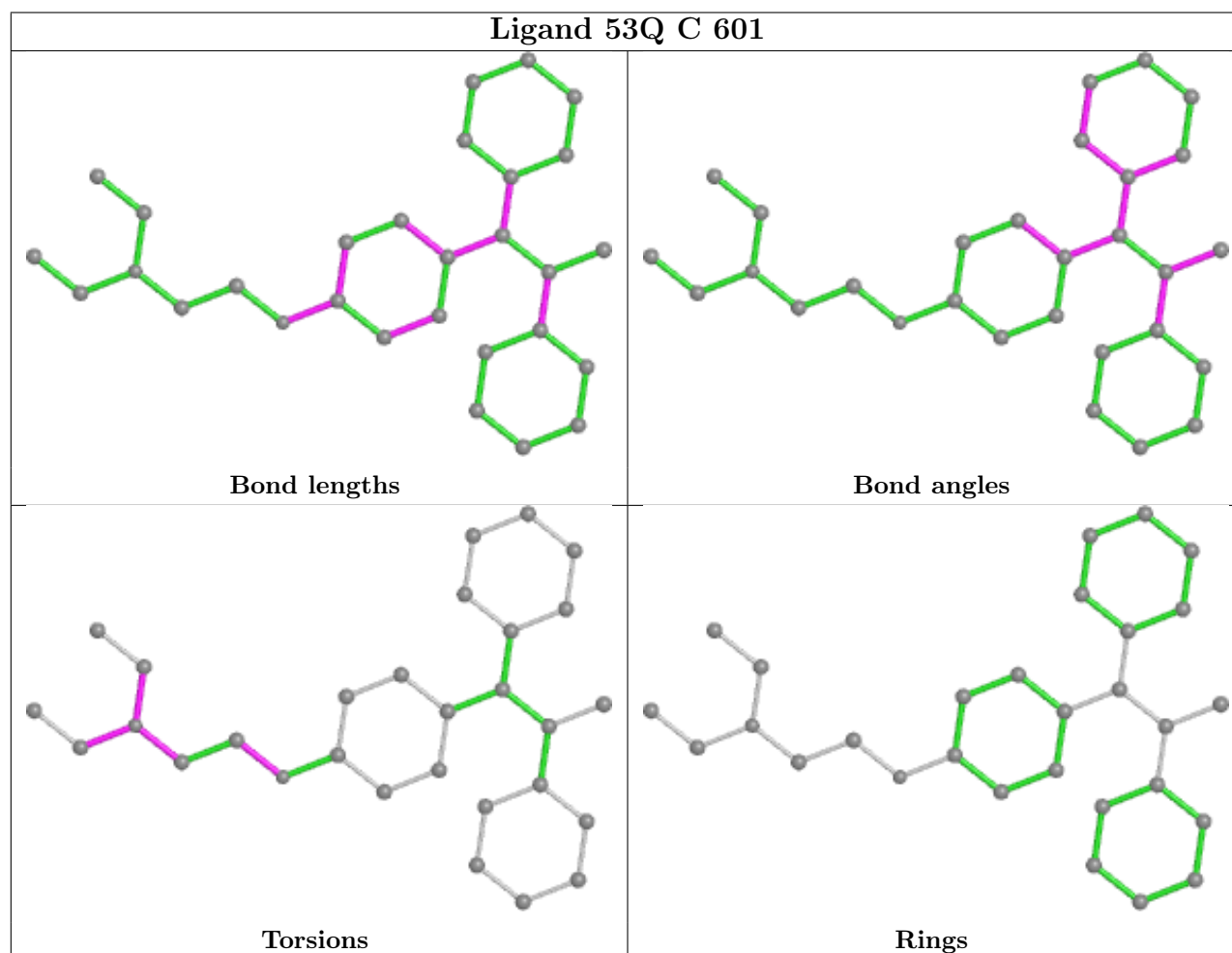
There are no ring outliers.

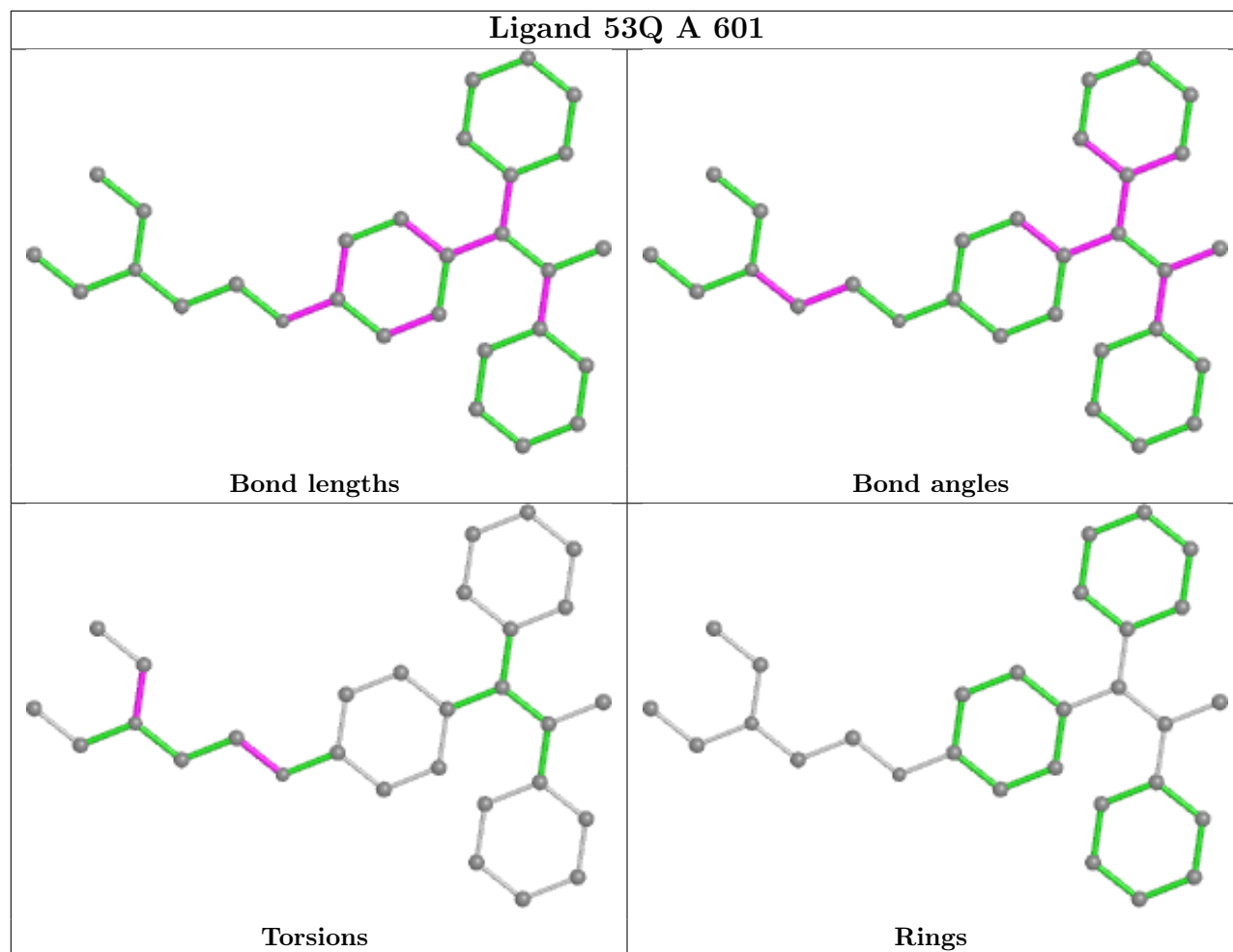
2 monomers are involved in 2 short contacts:

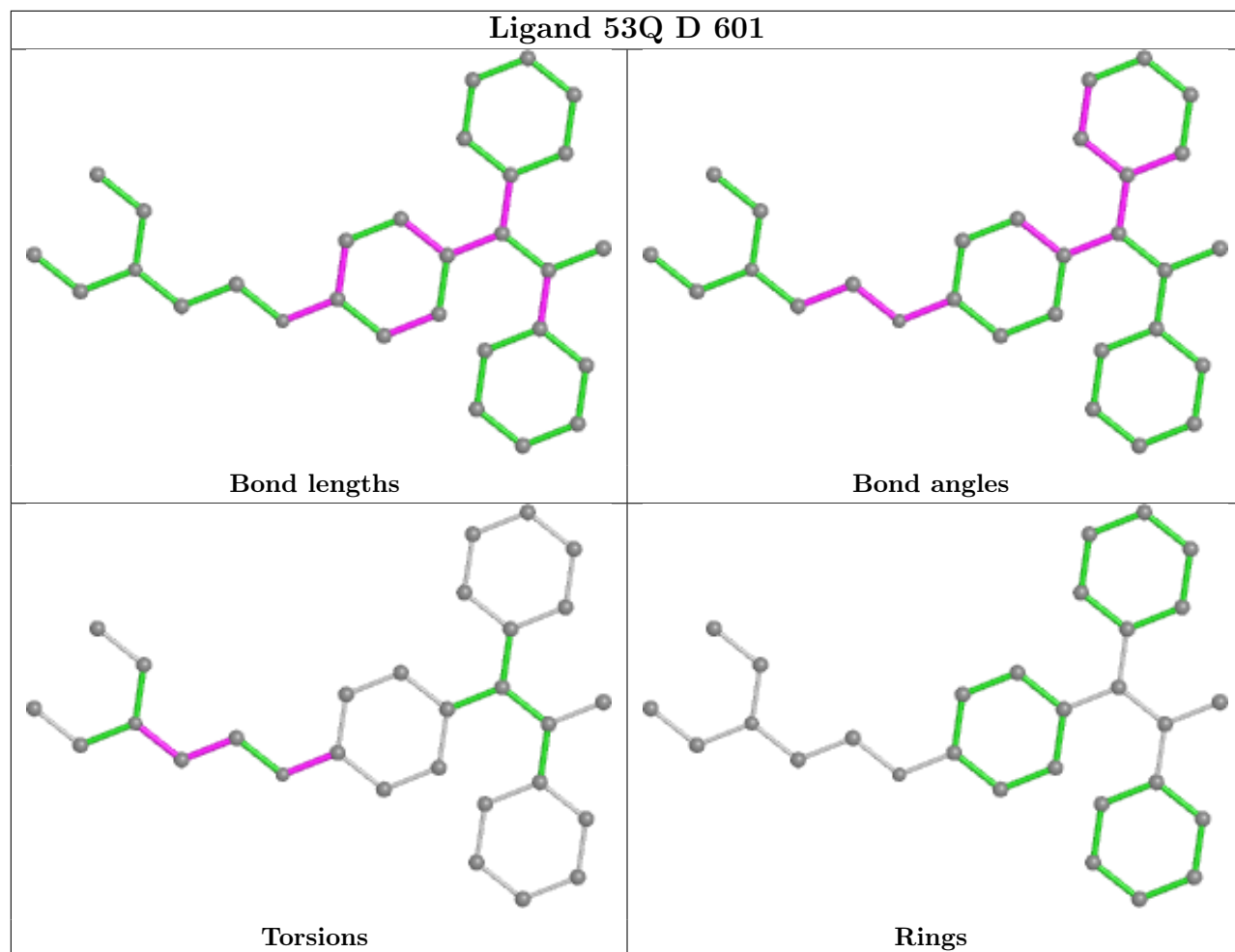
Mol	Chain	Res	Type	Clashes	Symm-Clashes
2	C	601	53Q	1	0
2	B	601	53Q	1	0

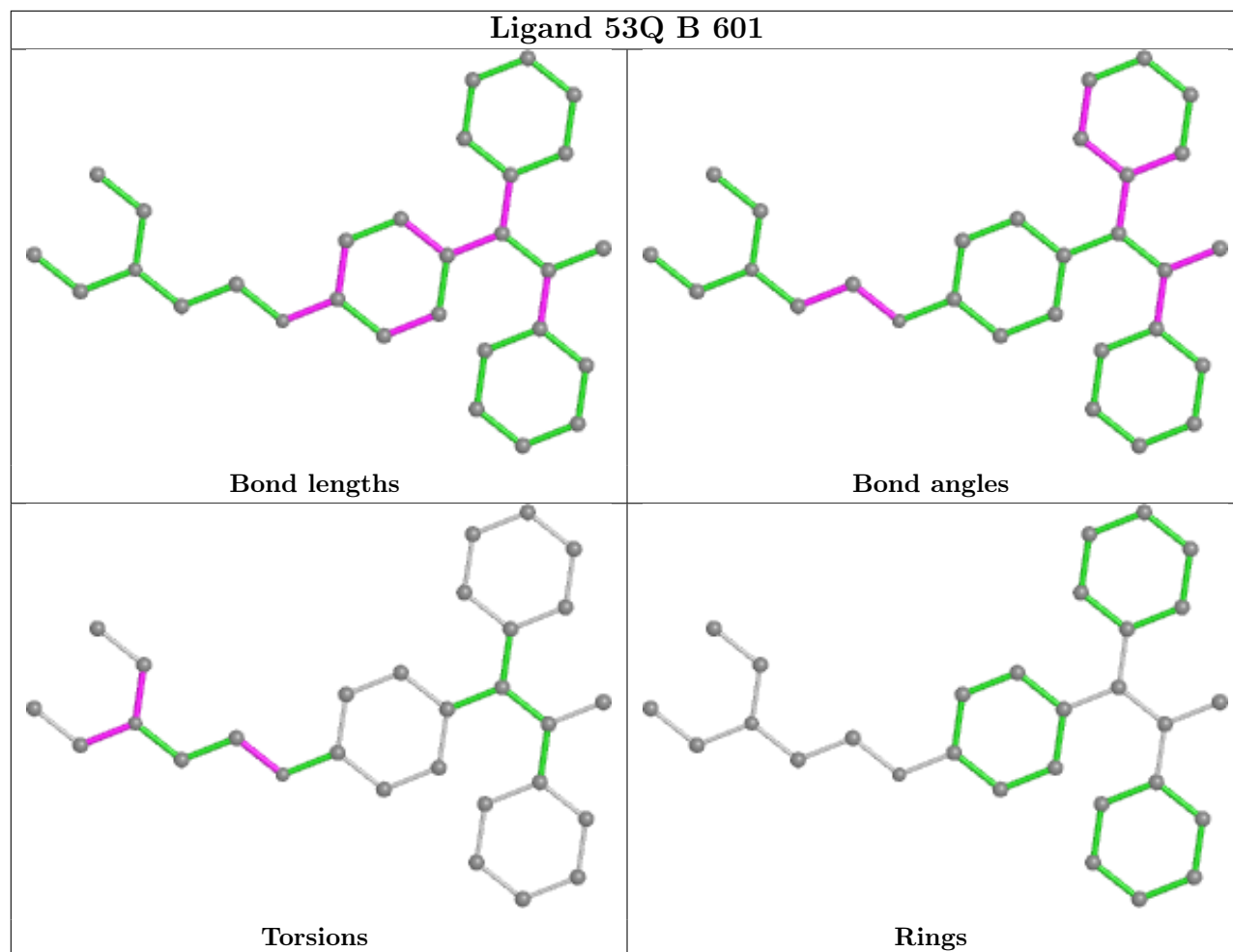
The following is a two-dimensional graphical depiction of Mogul quality analysis of bond lengths, bond angles, torsion angles, and ring geometry for all instances of the Ligand of Interest. In addition, ligands with molecular weight > 250 and outliers as shown on the validation Tables will also be included. For torsion angles, if less than 5% of the Mogul distribution of torsion angles is within 10 degrees of the torsion angle in question, then that torsion angle is considered an outlier. Any bond that is central to one or more torsion angles identified as an outlier by Mogul will be

highlighted in the graph. For rings, the root-mean-square deviation (RMSD) between the ring in question and similar rings identified by Mogul is calculated over all ring torsion angles. If the average RMSD is greater than 60 degrees and the minimal RMSD between the ring in question and any Mogul-identified rings is also greater than 60 degrees, then that ring is considered an outlier. The outliers are highlighted in purple. The color gray indicates Mogul did not find sufficient equivalents in the CSD to analyse the geometry.









5.7 Other polymers [i](#)

There are no such residues in this entry.

5.8 Polymer linkage issues [i](#)

There are no chain breaks in this entry.

6 Fit of model and data ⓘ

6.1 Protein, DNA and RNA chains ⓘ

In the following table, the column labelled ‘#RSRZ> 2’ contains the number (and percentage) of RSRZ outliers, followed by percent RSRZ outliers for the chain as percentile scores relative to all X-ray entries and entries of similar resolution. The OWAB column contains the minimum, median, 95th percentile and maximum values of the occupancy-weighted average B-factor per residue. The column labelled ‘Q< 0.9’ lists the number of (and percentage) of residues with an average occupancy less than 0.9.

Mol	Chain	Analysed	<RSRZ>	#RSRZ>2	OWAB(Å ²)	Q<0.9
1	A	236/263 (89%)	-0.06	3 (1%) 77 77	8, 22, 42, 52	0
1	B	243/263 (92%)	-0.07	6 (2%) 57 55	8, 23, 49, 67	1 (0%)
1	C	237/263 (90%)	-0.11	7 (2%) 50 48	8, 22, 43, 58	0
1	D	236/263 (89%)	-0.11	5 (2%) 63 62	8, 22, 44, 63	1 (0%)
All	All	952/1052 (90%)	-0.09	21 (2%) 62 60	8, 22, 45, 67	2 (0%)

All (21) RSRZ outliers are listed below:

Mol	Chain	Res	Type	RSRZ
1	D	308	LEU	4.3
1	A	525	LEU	3.8
1	A	308	LEU	3.3
1	C	417	SER	3.3
1	C	525	LEU	3.3
1	C	308	LEU	3.3
1	D	309	SER	3.2
1	B	532	ASN	3.0
1	C	526	TYR	2.9
1	D	525	LEU	2.8
1	D	417	SER	2.6
1	B	525	LEU	2.5
1	B	526	TYR	2.5
1	B	547	HIS	2.4
1	B	308	LEU	2.3
1	D	533	VAL	2.3
1	A	417	SER	2.3
1	C	337	PHE	2.1
1	C	334	THR	2.1
1	C	461	PHE	2.1
1	B	459	TYR	2.0

6.2 Non-standard residues in protein, DNA, RNA chains [i](#)

There are no non-standard protein/DNA/RNA residues in this entry.

6.3 Carbohydrates [i](#)

There are no monosaccharides in this entry.

6.4 Ligands [i](#)

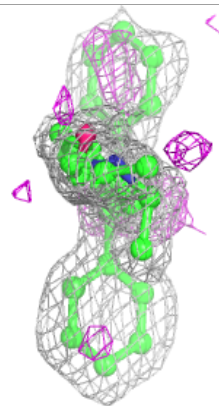
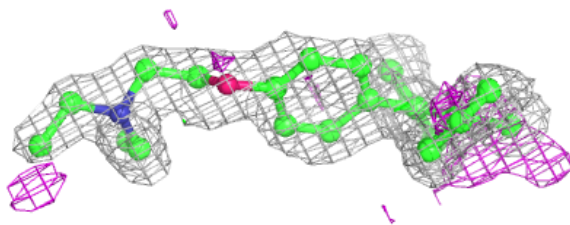
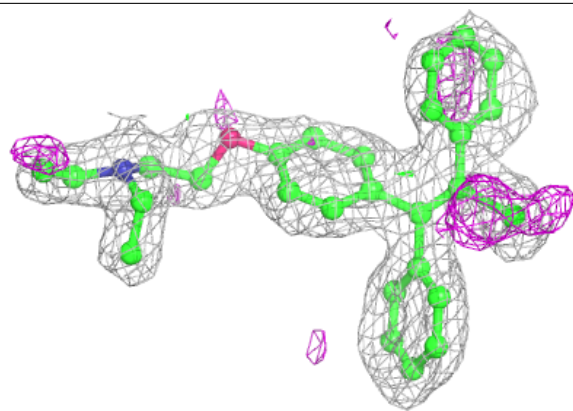
In the following table, the Atoms column lists the number of modelled atoms in the group and the number defined in the chemical component dictionary. The B-factors column lists the minimum, median, 95th percentile and maximum values of B factors of atoms in the group. The column labelled 'Q< 0.9' lists the number of atoms with occupancy less than 0.9.

Mol	Type	Chain	Res	Atoms	RSCC	RSR	B-factors(\AA^2)	Q<0.9
2	53Q	D	601	29/29	0.83	0.14	9,22,30,31	0
2	53Q	C	601	29/29	0.86	0.14	9,22,34,43	0
2	53Q	A	601	29/29	0.87	0.13	12,22,33,36	0
2	53Q	B	601	29/29	0.89	0.13	8,22,39,42	0

The following is a graphical depiction of the model fit to experimental electron density of all instances of the Ligand of Interest. In addition, ligands with molecular weight > 250 and outliers as shown on the geometry validation Tables will also be included. Each fit is shown from different orientation to approximate a three-dimensional view.

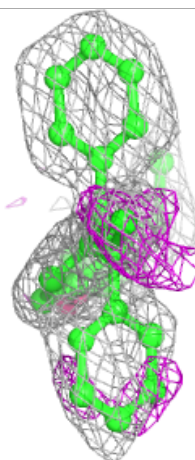
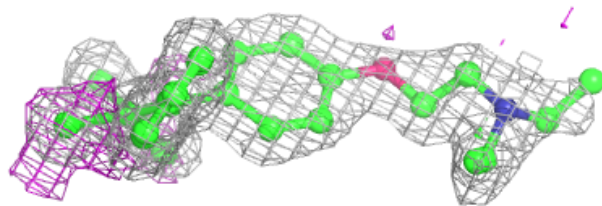
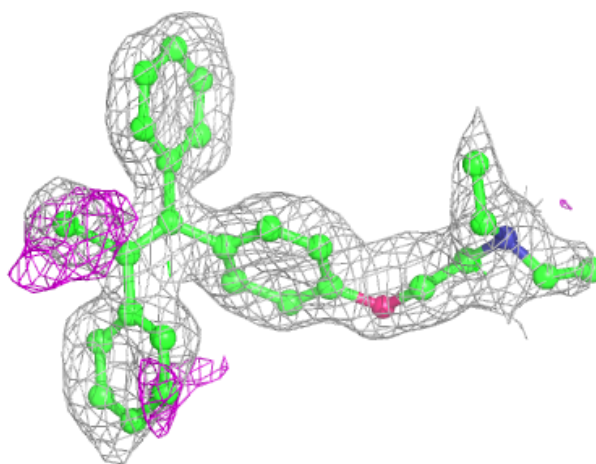
Electron density around 53Q D 601:

$2mF_o - DF_c$ (at 0.7 rmsd) in gray
 $mF_o - DF_c$ (at 3 rmsd) in purple (negative)
and green (positive)



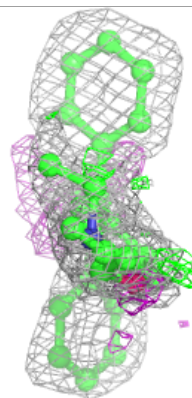
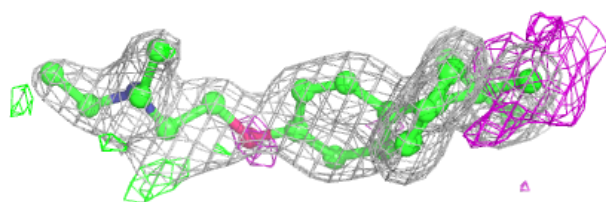
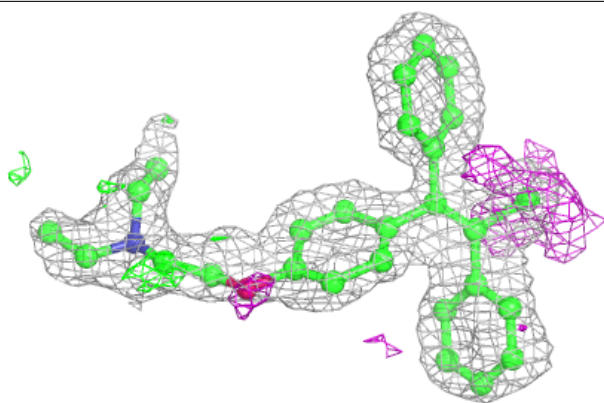
Electron density around 53Q C 601:

$2mF_o-DF_c$ (at 0.7 rmsd) in gray
 mF_o-DF_c (at 3 rmsd) in purple (negative)
and green (positive)

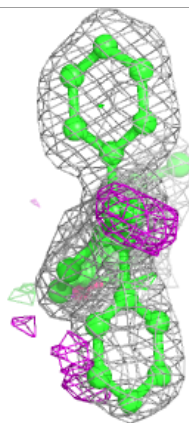
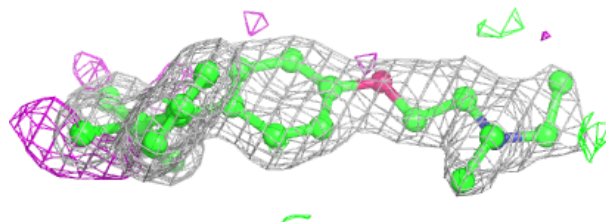
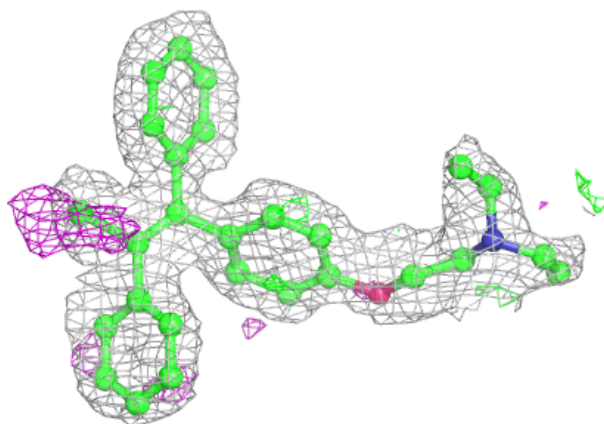


Electron density around 53Q A 601:

$2mF_o-DF_c$ (at 0.7 rmsd) in gray
 mF_o-DF_c (at 3 rmsd) in purple (negative)
and green (positive)

**Electron density around 53Q B 601:**

$2mF_o-DF_c$ (at 0.7 rmsd) in gray
 mF_o-DF_c (at 3 rmsd) in purple (negative)
and green (positive)



6.5 Other polymers ⓘ

There are no such residues in this entry.