



# Full wwPDB EM Validation Report ⓘ

Nov 13, 2022 – 04:45 AM EST

PDB ID : 6VQR  
EMDB ID : EMD-21355  
Title : CryoEM Structure of the PfFNT-inhibitor complex  
Authors : Su, C.C.; Lyu, M.  
Deposited on : 2020-02-05  
Resolution : 2.78 Å(reported)

This is a Full wwPDB EM Validation Report for a publicly released PDB entry.

We welcome your comments at [validation@mail.wwpdb.org](mailto:validation@mail.wwpdb.org)

A user guide is available at

<https://www.wwpdb.org/validation/2017/EMValidationReportHelp>

with specific help available everywhere you see the ⓘ symbol.

The types of validation reports are described at

<http://www.wwpdb.org/validation/2017/FAQs#types>.

---

The following versions of software and data (see [references ⓘ](#)) were used in the production of this report:

EMDB validation analysis : 0.0.1.dev43  
Mogul : 1.8.5 (274361), CSD as541be (2020)  
MolProbity : 4.02b-467  
buster-report : 1.1.7 (2018)  
Percentile statistics : 20191225.v01 (using entries in the PDB archive December 25th 2019)  
MapQ : 1.9.9  
Ideal geometry (proteins) : Engh & Huber (2001)  
Ideal geometry (DNA, RNA) : Parkinson et al. (1996)  
Validation Pipeline (wwPDB-VP) : 2.31.2

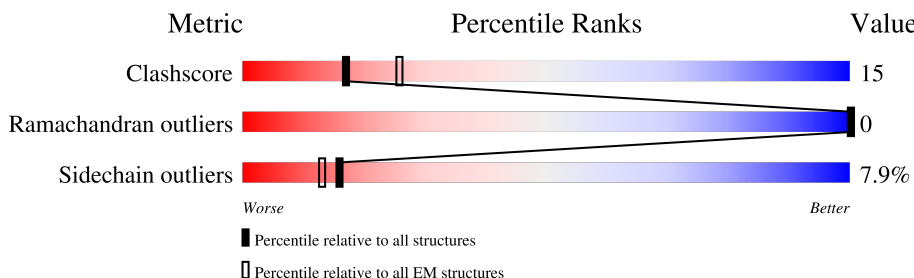
# 1 Overall quality at a glance

The following experimental techniques were used to determine the structure:

*ELECTRON MICROSCOPY*

The reported resolution of this entry is 2.78 Å.

Percentile scores (ranging between 0-100) for global validation metrics of the entry are shown in the following graphic. The table shows the number of entries on which the scores are based.



Metric	Whole archive (#Entries)	EM structures (#Entries)
Clashscore	158937	4297
Ramachandran outliers	154571	4023
Sidechain outliers	154315	3826

The table below summarises the geometric issues observed across the polymeric chains and their fit to the map. The red, orange, yellow and green segments of the bar indicate the fraction of residues that contain outliers for  $\geq 3$ , 2, 1 and 0 types of geometric quality criteria respectively. A grey segment represents the fraction of residues that are not modelled. The numeric value for each fraction is indicated below the corresponding segment, with a dot representing fractions  $\leq 5\%$ . The upper red bar (where present) indicates the fraction of residues that have poor fit to the EM map (all-atom inclusion  $< 40\%$ ). The numeric value is given above the bar.

Mol	Chain	Length	Quality of chain
1	A	309	
1	B	309	
1	C	309	
1	D	309	
1	E	309	

The following table lists non-polymeric compounds, carbohydrate monomers and non-standard residues in protein, DNA, RNA chains that are outliers for geometric or electron-density-fit criteria:

Mol	Type	Chain	Res	Chirality	Geometry	Clashes	Electron density
2	R7M	A	401	-	-	X	-
2	R7M	B	401	-	-	X	-
2	R7M	C	401	-	X	-	-
2	R7M	D	401	-	X	-	-
2	R7M	E	401	-	-	X	-

## 2 Entry composition [i](#)

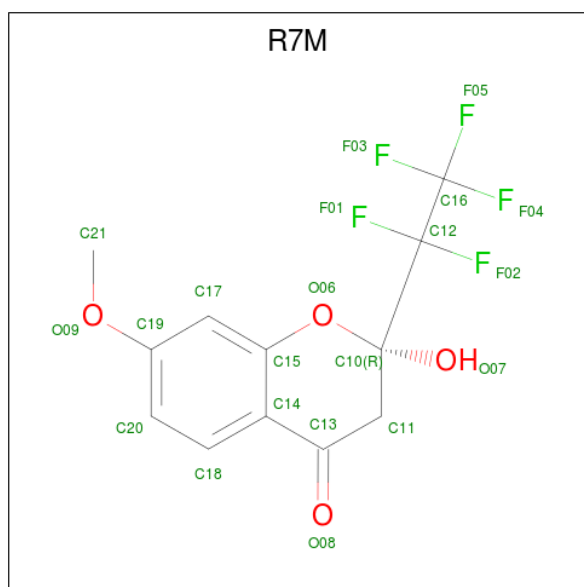
There are 2 unique types of molecules in this entry. The entry contains 11254 atoms, of which 0 are hydrogens and 0 are deuteriums.

In the tables below, the AltConf column contains the number of residues with at least one atom in alternate conformation and the Trace column contains the number of residues modelled with at most 2 atoms.

- Molecule 1 is a protein called Formate-nitrite transporter.

Mol	Chain	Residues	Atoms					AltConf	Trace
1	A	281	Total	C	N	O	S	0	0
			2205	1470	344	377	14		
1	B	285	Total	C	N	O	S	0	0
			2240	1488	353	385	14		
1	C	282	Total	C	N	O	S	0	0
			2213	1476	344	379	14		
1	D	284	Total	C	N	O	S	0	0
			2228	1485	347	382	14		
1	E	288	Total	C	N	O	S	0	0
			2263	1503	356	390	14		

- Molecule 2 is (2R)-2-hydroxy-7-methoxy-2-(pentafluoroethyl)-2,3-dihydro-4H-1-benzopyran-4-one (three-letter code: R7M) (formula: C<sub>12</sub>H<sub>9</sub>F<sub>5</sub>O<sub>4</sub>) (labeled as "Ligand of Interest" by depositor).



Mol	Chain	Residues	Atoms				AltConf
2	A	1	Total	C	F	O	0
			21	12	5	4	

*Continued on next page...*

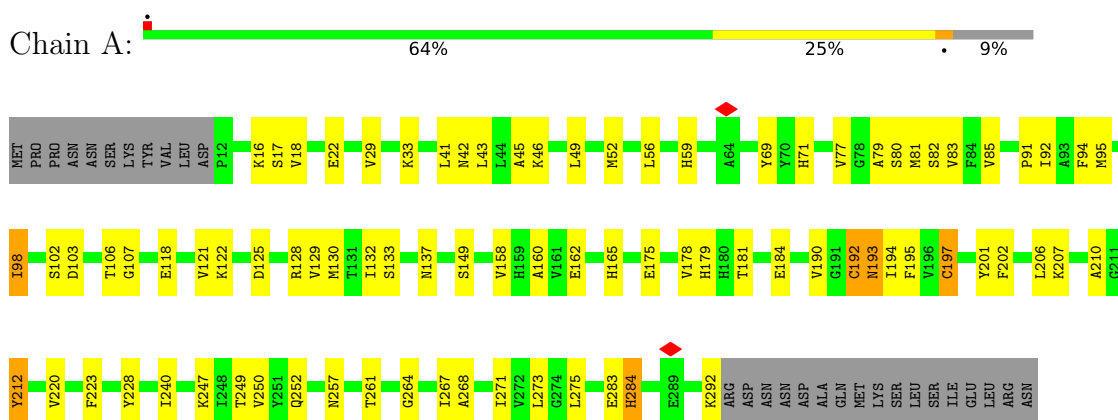
*Continued from previous page...*

Mol	Chain	Residues	Atoms				AltConf
2	B	1	Total	C	F	O	0
			21	12	5	4	
2	C	1	Total	C	F	O	0
			21	12	5	4	
2	D	1	Total	C	F	O	0
			21	12	5	4	
2	E	1	Total	C	F	O	0
			21	12	5	4	

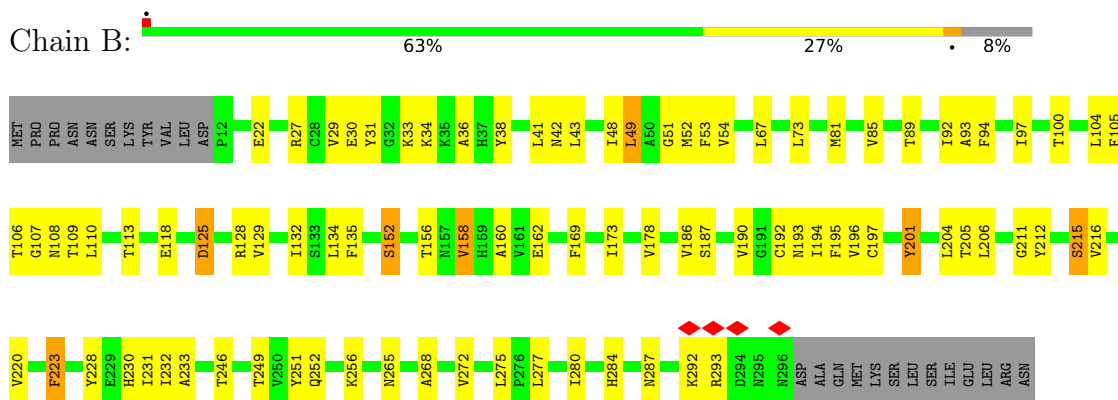
### 3 Residue-property plots

These plots are drawn for all protein, RNA, DNA and oligosaccharide chains in the entry. The first graphic for a chain summarises the proportions of the various outlier classes displayed in the second graphic. The second graphic shows the sequence view annotated by issues in geometry and atom inclusion in map density. Residues are color-coded according to the number of geometric quality criteria for which they contain at least one outlier: green = 0, yellow = 1, orange = 2 and red = 3 or more. A red diamond above a residue indicates a poor fit to the EM map for this residue (all-atom inclusion < 40%). Stretches of 2 or more consecutive residues without any outlier are shown as a green connector. Residues present in the sample, but not in the model, are shown in grey.

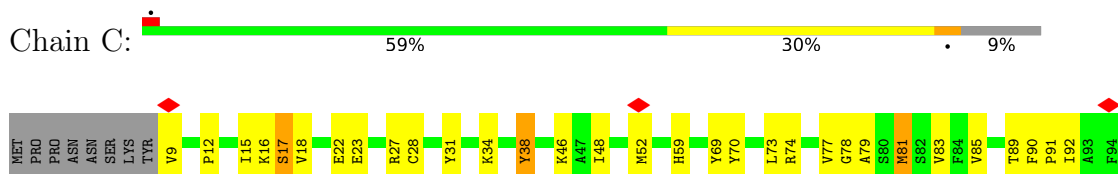
#### • Molecule 1: Formate-nitrite transporter

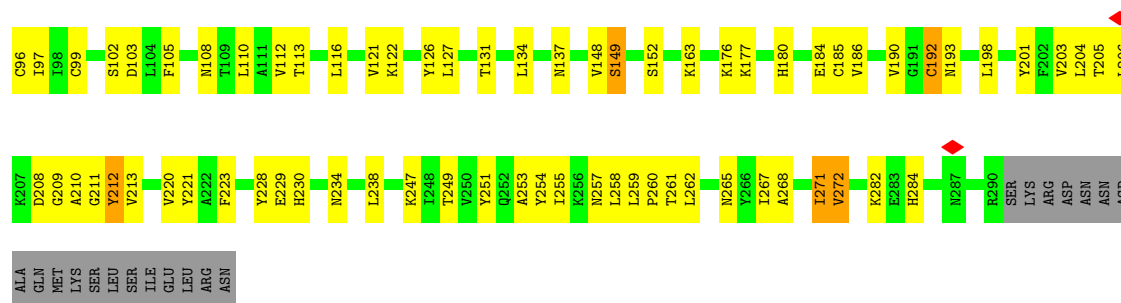


#### • Molecule 1: Formate-nitrite transporter

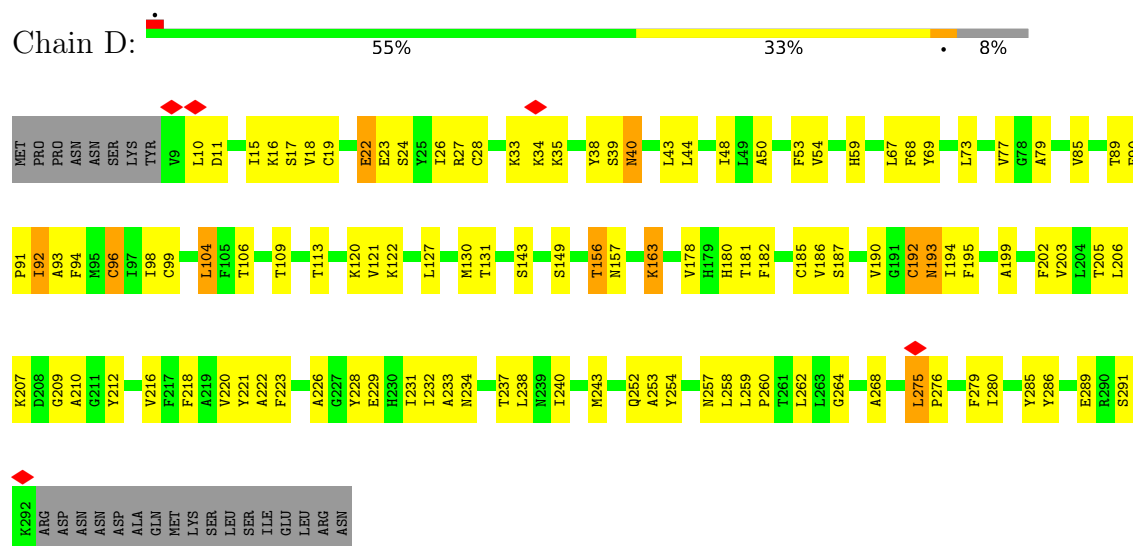


#### • Molecule 1: Formate-nitrite transporter

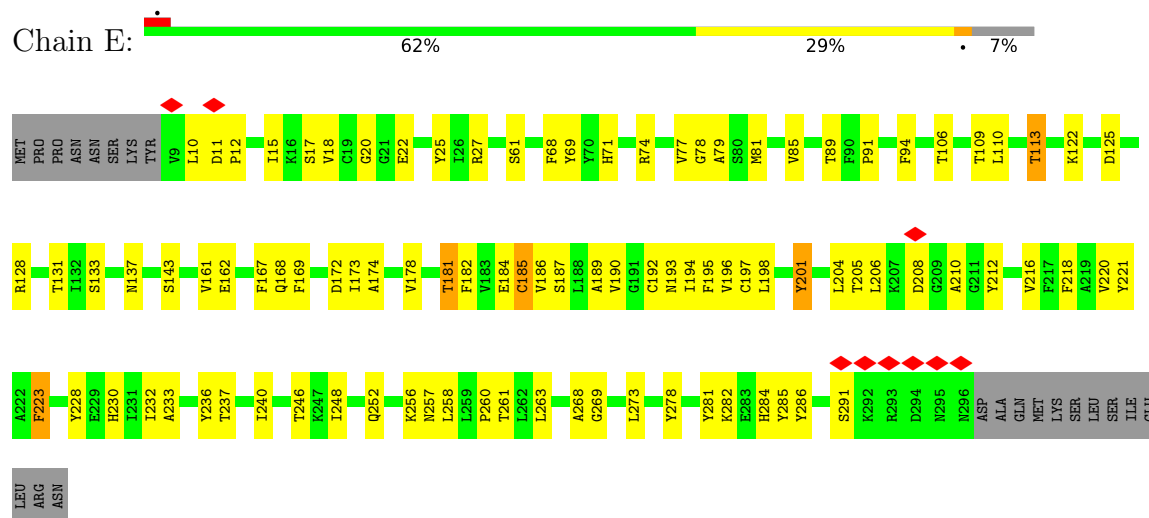




• Molecule 1: Formate-nitrite transporter



• Molecule 1: Formate-nitrite transporter



## 4 Experimental information

Property	Value	Source
EM reconstruction method	SINGLE PARTICLE	Depositor
Imposed symmetry	POINT, Not provided	
Number of particles used	141224	Depositor
Resolution determination method	FSC 0.143 CUT-OFF	Depositor
CTF correction method	PHASE FLIPPING AND AMPLITUDE CORRECTION	Depositor
Microscope	FEI TITAN KRIOS	Depositor
Voltage (kV)	300	Depositor
Electron dose ( $e^-/\text{\AA}^2$ )	29.0	Depositor
Minimum defocus (nm)	Not provided	
Maximum defocus (nm)	Not provided	
Magnification	Not provided	
Image detector	GATAN K3 BIOQUANTUM (6k x 4k)	Depositor
Maximum map value	5.351	Depositor
Minimum map value	-3.366	Depositor
Average map value	-0.000	Depositor
Map value standard deviation	0.312	Depositor
Recommended contour level	0.26	Depositor
Map size (Å)	83.16, 102.600006, 120.96001	wwPDB
Map dimensions	112, 95, 77	wwPDB
Map angles (°)	90.0, 90.0, 90.0	wwPDB
Pixel spacing (Å)	1.08, 1.08, 1.08	Depositor



## 5 Model quality [i](#)

### 5.1 Standard geometry [i](#)

Bond lengths and bond angles in the following residue types are not validated in this section: R7M

The Z score for a bond length (or angle) is the number of standard deviations the observed value is removed from the expected value. A bond length (or angle) with  $|Z| > 5$  is considered an outlier worth inspection. RMSZ is the root-mean-square of all Z scores of the bond lengths (or angles).

Mol	Chain	Bond lengths		Bond angles	
		RMSZ	$\# Z  > 5$	RMSZ	$\# Z  > 5$
1	A	0.41	0/2263	0.51	0/3066
1	B	0.40	0/2298	0.51	0/3113
1	C	0.41	0/2271	0.52	0/3080
1	D	0.40	0/2286	0.50	0/3099
1	E	0.40	0/2321	0.50	0/3146
All	All	0.41	0/11439	0.51	0/15504

There are no bond length outliers.

There are no bond angle outliers.

There are no chirality outliers.

There are no planarity outliers.

### 5.2 Too-close contacts [i](#)

In the following table, the Non-H and H(model) columns list the number of non-hydrogen atoms and hydrogen atoms in the chain respectively. The H(added) column lists the number of hydrogen atoms added and optimized by MolProbity. The Clashes column lists the number of clashes within the asymmetric unit, whereas Symm-Clashes lists symmetry-related clashes.

Mol	Chain	Non-H	H(model)	H(added)	Clashes	Symm-Clashes
1	A	2205	0	2228	58	0
1	B	2240	0	2257	67	0
1	C	2213	0	2233	82	0
1	D	2228	0	2251	88	0
1	E	2263	0	2280	83	0
2	A	21	0	0	7	0
2	B	21	0	0	7	0
2	C	21	0	0	1	0

*Continued on next page...*

*Continued from previous page...*

Mol	Chain	Non-H	H(model)	H(added)	Clashes	Symm-Clashes
2	D	21	0	0	1	0
2	E	21	0	0	8	0
All	All	11254	0	11249	347	0

The all-atom clashscore is defined as the number of clashes found per 1000 atoms (including hydrogen atoms). The all-atom clashscore for this structure is 15.

All (347) close contacts within the same asymmetric unit are listed below, sorted by their clash magnitude.

Atom-1	Atom-2	Interatomic distance (Å)	Clash overlap (Å)
1:C:259:LEU:HB3	1:C:260:PRO:HD3	1.39	1.03
1:A:42:ASN:O	1:A:46:LYS:HG3	1.64	0.98
1:D:259:LEU:HB3	1:D:260:PRO:HD3	1.55	0.86
1:A:94:PHE:O	1:A:98:ILE:HG22	1.76	0.86
1:B:106:THR:HB	2:B:401:R7M:O08	1.76	0.86
1:A:107:GLY:HA3	2:A:401:R7M:C18	2.07	0.84
1:D:106:THR:CG2	1:D:193:ASN:ND2	2.41	0.83
1:D:106:THR:HG22	1:D:193:ASN:ND2	1.94	0.82
1:E:110:LEU:HB2	1:E:197:CYS:SG	2.20	0.81
1:E:94:PHE:HD2	2:E:401:R7M:F02	1.52	0.81
1:D:231:ILE:HD12	1:D:262:LEU:HB3	1.63	0.80
1:D:106:THR:HG22	1:D:193:ASN:HD21	1.46	0.79
1:E:192:CYS:HB2	1:E:228:TYR:HB3	1.65	0.78
1:E:94:PHE:CD2	2:E:401:R7M:F02	2.27	0.77
1:B:94:PHE:CD2	2:B:401:R7M:O06	2.37	0.77
1:C:234:ASN:ND2	1:C:257:ASN:HD21	1.83	0.77
1:C:69:TYR:CE2	1:C:74:ARG:HD3	2.20	0.76
1:E:106:THR:HG23	1:E:196:VAL:HG11	1.68	0.76
1:E:190:VAL:O	1:E:194:ILE:HG13	1.85	0.75
1:E:110:LEU:HD13	1:E:110:LEU:O	1.85	0.75
1:B:106:THR:CG2	1:B:196:VAL:HG11	2.17	0.74
1:C:73:LEU:O	1:C:77:VAL:HG22	1.88	0.74
1:E:193:ASN:OD1	1:E:197:CYS:SG	2.45	0.74
1:E:106:THR:CG2	1:E:196:VAL:HG11	2.17	0.73
1:C:69:TYR:CZ	1:C:74:ARG:HD3	2.24	0.72
1:B:194:ILE:HD11	1:B:272:VAL:HG11	1.73	0.71
1:B:211:GLY:O	1:B:215:SER:HB3	1.91	0.70
1:D:254:TYR:HA	1:D:258:LEU:HB2	1.71	0.70
1:E:22:GLU:HG3	1:E:281:TYR:HE1	1.58	0.69
1:A:271:ILE:HG13	1:A:275:LEU:HD13	1.74	0.68
1:A:45:ALA:O	1:A:49:LEU:HD12	1.94	0.67

*Continued on next page...*

*Continued from previous page...*

Atom-1	Atom-2	Interatomic distance (Å)	Clash overlap (Å)
1:E:161:VAL:HG23	1:E:162:GLU:HG2	1.77	0.67
1:E:71:HIS:ND1	1:E:162:GLU:OE2	2.25	0.66
1:B:94:PHE:CG	1:B:216:VAL:HG11	2.31	0.66
1:C:249:THR:HG22	1:C:251:TYR:H	1.61	0.66
1:D:94:PHE:CG	1:D:216:VAL:HG21	2.32	0.65
1:C:192:CYS:HB2	1:C:228:TYR:HB3	1.80	0.64
2:C:401:R7M:O07	2:C:401:R7M:F05	2.02	0.64
1:D:91:PRO:HB3	1:D:220:VAL:HB	1.78	0.64
1:B:53:PHE:HE2	1:B:100:THR:HG21	1.62	0.64
1:C:190:VAL:HA	1:C:268:ALA:HB2	1.80	0.64
1:D:253:ALA:O	1:D:258:LEU:HG	1.98	0.64
1:D:106:THR:HB	2:D:401:R7M:O08	1.97	0.63
1:E:69:TYR:HE1	1:E:79:ALA:HB2	1.64	0.63
1:E:85:VAL:O	1:E:89:THR:HG22	1.98	0.63
1:B:107:GLY:HA3	2:B:401:R7M:C18	2.28	0.63
1:D:73:LEU:O	1:D:77:VAL:HB	1.98	0.63
1:B:94:PHE:HB2	2:B:401:R7M:F01	1.89	0.63
1:A:192:CYS:HB2	1:A:228:TYR:HB3	1.80	0.62
1:A:212:TYR:CZ	1:D:18:VAL:HG21	2.34	0.62
1:E:77:VAL:HG11	1:E:81:MET:HG2	1.81	0.62
1:A:41:LEU:HB3	1:D:279:PHE:HZ	1.64	0.61
1:C:127:LEU:O	1:C:131:THR:HG23	2.00	0.61
1:B:252:GLN:HA	1:B:256:LYS:HB2	1.80	0.61
1:B:36:ALA:O	1:B:128:ARG:NH2	2.34	0.61
1:B:169:PHE:O	1:B:173:ILE:HG12	2.00	0.61
1:E:69:TYR:CZ	1:E:74:ARG:HD3	2.36	0.60
1:D:275:LEU:HG	1:D:276:PRO:HD3	1.83	0.60
1:C:59:HIS:HD2	1:C:149:SER:HB2	1.65	0.60
1:A:133:SER:O	1:A:137:ASN:ND2	2.28	0.60
1:D:254:TYR:CD1	1:D:258:LEU:HD12	2.37	0.60
1:E:109:THR:O	1:E:113:THR:HG22	2.02	0.60
1:B:30:GLU:O	1:B:34:LYS:HG3	2.00	0.60
1:C:206:LEU:HD21	1:D:209:GLY:HA3	1.84	0.60
1:A:91:PRO:HB3	1:A:220:VAL:HB	1.84	0.59
1:B:29:VAL:HG21	1:B:118:GLU:HG3	1.85	0.59
1:C:206:LEU:HD22	1:C:211:GLY:HA3	1.85	0.59
1:B:106:THR:HG22	1:B:196:VAL:HG11	1.84	0.58
1:D:33:LYS:HD3	1:D:34:LYS:HG3	1.86	0.58
1:D:233:ALA:O	1:D:237:THR:HG23	2.03	0.58
1:D:104:LEU:HD21	1:D:232:ILE:HG13	1.86	0.58
1:A:17:SER:O	1:A:17:SER:OG	2.21	0.58

*Continued on next page...*

*Continued from previous page...*

Atom-1	Atom-2	Interatomic distance (Å)	Clash overlap (Å)
1:D:85:VAL:O	1:D:89:THR:HG22	2.04	0.58
1:C:78:GLY:O	1:C:79:ALA:HB3	2.03	0.57
1:C:92:ILE:HG12	1:E:218:PHE:HB3	1.86	0.57
1:A:94:PHE:CD2	2:A:401:R7M:F02	2.48	0.57
1:E:27:ARG:HH21	1:E:205:THR:HA	1.69	0.57
1:E:106:THR:CG2	2:E:401:R7M:O08	2.53	0.57
1:B:178:VAL:HB	1:B:252:GLN:HB3	1.86	0.57
1:E:109:THR:OG1	1:E:269:GLY:HA3	2.04	0.57
1:E:178:VAL:HG11	1:E:248:ILE:HG13	1.86	0.57
1:E:201:TYR:O	1:E:205:THR:HG22	2.05	0.57
1:A:193:ASN:HB3	1:A:268:ALA:HB3	1.87	0.56
1:C:16:LYS:HB2	1:E:12:PRO:HB2	1.88	0.56
1:C:230:HIS:O	1:C:261:THR:HG21	2.05	0.56
1:B:38:TYR:HB2	1:B:43:LEU:HD21	1.88	0.56
1:C:70:TYR:O	1:C:74:ARG:HB2	2.05	0.56
1:A:71:HIS:ND1	1:A:162:GLU:OE1	2.36	0.56
1:A:83:VAL:HB	1:B:67:LEU:HD21	1.86	0.56
1:A:257:ASN:O	1:A:261:THR:HG23	2.06	0.56
1:A:190:VAL:HA	1:A:268:ALA:HB2	1.88	0.56
1:C:210:ALA:HB1	1:D:210:ALA:HB2	1.87	0.56
1:C:259:LEU:HB3	1:C:260:PRO:CD	2.24	0.55
1:C:48:ILE:O	1:C:52:MET:HG3	2.06	0.55
1:A:125:ASP:O	1:A:129:VAL:HG23	2.05	0.55
1:C:177:LYS:NZ	1:C:229:GLU:OE1	2.37	0.55
1:E:233:ALA:O	1:E:237:THR:HG23	2.07	0.55
1:B:220:VAL:HG13	1:B:223:PHE:HE2	1.72	0.55
1:A:56:LEU:HG	1:D:195:PHE:CE2	2.42	0.54
1:B:106:THR:HG21	1:B:196:VAL:HG11	1.87	0.54
2:B:401:R7M:O07	2:B:401:R7M:F05	2.14	0.54
1:C:193:ASN:HB3	1:C:268:ALA:HB3	1.88	0.54
1:A:264:GLY:O	1:A:267:ILE:HG22	2.08	0.54
1:B:110:LEU:HD22	1:B:197:CYS:HB2	1.90	0.54
1:D:69:TYR:HE1	1:D:79:ALA:HB2	1.73	0.54
1:D:194:ILE:HG13	1:D:268:ALA:HB1	1.90	0.54
1:E:181:THR:OG1	1:E:184:GLU:OE2	2.23	0.54
1:D:186:VAL:O	1:D:190:VAL:HG13	2.08	0.54
1:E:208:ASP:O	1:E:210:ALA:N	2.40	0.54
1:A:77:VAL:HG12	1:A:80:SER:HB3	1.89	0.53
1:B:190:VAL:HA	1:B:268:ALA:HB2	1.89	0.53
1:B:192:CYS:HB2	1:B:228:TYR:HB3	1.90	0.53
1:C:180:HIS:HB3	1:C:184:GLU:HB2	1.91	0.53

*Continued on next page...*

*Continued from previous page...*

Atom-1	Atom-2	Interatomic distance (Å)	Clash overlap (Å)
1:C:27:ARG:HB2	1:C:204:LEU:HD21	1.89	0.53
1:E:174:ALA:O	1:E:178:VAL:HG13	2.08	0.53
1:C:85:VAL:O	1:C:89:THR:HG22	2.08	0.53
1:A:210:ALA:HB2	1:D:210:ALA:HB3	1.89	0.53
1:B:277:LEU:HA	1:B:280:ILE:HD12	1.90	0.53
1:E:257:ASN:O	1:E:261:THR:HG22	2.09	0.53
1:C:258:LEU:HD23	1:C:258:LEU:N	2.24	0.53
1:B:106:THR:HG22	1:B:196:VAL:CG1	2.40	0.52
1:E:205:THR:HG23	1:E:206:LEU:HD12	1.90	0.52
2:A:401:R7M:O07	2:A:401:R7M:F05	2.13	0.52
1:B:220:VAL:HA	1:B:223:PHE:HD2	1.74	0.52
1:C:238:LEU:HD23	1:C:253:ALA:HA	1.91	0.52
1:E:106:THR:HG22	2:E:401:R7M:O08	2.09	0.52
1:B:48:ILE:O	1:B:52:MET:HG2	2.10	0.52
1:B:206:LEU:HD12	1:B:211:GLY:HA3	1.91	0.52
2:E:401:R7M:F05	2:E:401:R7M:O07	2.13	0.52
1:B:51:GLY:O	1:B:54:VAL:HG12	2.10	0.52
1:E:125:ASP:HA	1:E:128:ARG:HG2	1.92	0.52
1:B:193:ASN:ND2	1:B:265:ASN:O	2.41	0.52
1:E:25:TYR:HE1	1:E:285:TYR:HB2	1.75	0.52
1:B:109:THR:O	1:B:113:THR:HG23	2.10	0.52
1:B:186:VAL:O	1:B:190:VAL:HG13	2.10	0.52
1:C:70:TYR:CE1	1:E:78:GLY:HA3	2.45	0.52
1:E:94:PHE:CG	1:E:216:VAL:HG11	2.45	0.52
1:C:103:ASP:OD1	1:C:108:ASN:ND2	2.43	0.52
1:D:50:ALA:O	1:D:54:VAL:HG23	2.11	0.52
1:B:193:ASN:HB3	1:B:268:ALA:HB3	1.92	0.51
1:A:94:PHE:HD2	2:A:401:R7M:F02	1.82	0.51
1:A:181:THR:HG22	1:A:184:GLU:HG3	1.93	0.51
1:C:234:ASN:ND2	1:C:257:ASN:ND2	2.56	0.51
1:B:104:LEU:HD13	1:B:232:ILE:HD13	1.93	0.51
1:D:104:LEU:HD23	1:D:106:THR:H	1.75	0.51
1:A:267:ILE:CG2	1:A:268:ALA:N	2.74	0.51
1:C:234:ASN:HD22	1:C:257:ASN:HD21	1.57	0.51
1:C:234:ASN:HD22	1:C:257:ASN:ND2	2.09	0.51
1:E:94:PHE:CD2	2:E:401:R7M:C12	2.94	0.51
1:B:230:HIS:HB3	1:B:233:ALA:HB3	1.93	0.51
1:C:108:ASN:O	1:C:112:VAL:HB	2.11	0.50
1:C:206:LEU:HD23	1:C:208:ASP:H	1.75	0.50
1:E:110:LEU:HG	1:E:197:CYS:HB3	1.93	0.50
1:A:249:THR:HB	1:A:252:GLN:HG3	1.93	0.50

*Continued on next page...*

*Continued from previous page...*

Atom-1	Atom-2	Interatomic distance (Å)	Clash overlap (Å)
1:D:94:PHE:O	1:D:98:ILE:HG22	2.11	0.50
1:E:110:LEU:HD13	1:E:110:LEU:C	2.31	0.50
1:B:287:ASN:N	1:B:287:ASN:HD22	2.07	0.50
1:C:15:ILE:HB	1:D:15:ILE:HG12	1.94	0.50
1:C:81:MET:O	1:C:85:VAL:HG23	2.11	0.50
1:C:134:LEU:HD11	1:C:262:LEU:HD11	1.92	0.50
1:E:18:VAL:HG22	1:E:20:GLY:H	1.76	0.50
1:E:94:PHE:HD2	2:E:401:R7M:C12	2.24	0.50
1:B:105:PHE:CD2	1:B:134:LEU:HB3	2.47	0.49
1:B:220:VAL:HG13	1:B:223:PHE:CE2	2.47	0.49
1:C:112:VAL:HG12	1:C:126:TYR:CD1	2.47	0.49
1:C:121:VAL:HG12	1:C:122:LYS:H	1.76	0.49
1:A:128:ARG:O	1:A:132:ILE:HG12	2.11	0.49
1:B:104:LEU:HD12	2:B:401:R7M:C11	2.42	0.49
1:C:209:GLY:O	1:C:213:VAL:HG23	2.12	0.49
1:A:43:LEU:HD21	1:A:129:VAL:HG13	1.93	0.49
1:A:92:ILE:HD12	1:A:95:MET:HB2	1.95	0.49
1:E:106:THR:HG21	1:E:196:VAL:HG11	1.93	0.49
1:D:163:LYS:H	1:D:163:LYS:HD2	1.78	0.49
1:C:253:ALA:O	1:C:258:LEU:HG	2.12	0.49
1:A:41:LEU:HB3	1:D:279:PHE:CZ	2.46	0.48
1:D:187:SER:O	1:D:190:VAL:HG22	2.12	0.48
1:A:59:HIS:CD2	1:A:149:SER:HB3	2.48	0.48
1:D:39:SER:O	1:D:43:LEU:HG	2.14	0.48
1:D:156:THR:HG22	1:D:157:ASN:H	1.79	0.48
1:A:158:VAL:O	1:A:160:ALA:N	2.46	0.48
1:C:96:CYS:HB2	1:E:198:LEU:CD2	2.44	0.48
1:D:44:LEU:O	1:D:48:ILE:HG13	2.14	0.48
1:D:106:THR:HG23	1:D:193:ASN:ND2	2.25	0.48
1:C:91:PRO:HB3	1:C:220:VAL:HB	1.96	0.48
1:C:96:CYS:HB2	1:E:198:LEU:HD23	1.95	0.48
1:D:193:ASN:HB3	1:D:268:ALA:HB3	1.95	0.48
1:D:212:TYR:O	1:D:216:VAL:HG12	2.13	0.48
1:A:106:THR:HB	2:A:401:R7M:O08	2.13	0.48
1:A:194:ILE:HG23	1:A:273:LEU:HD11	1.96	0.48
1:C:198:LEU:HD21	1:D:53:PHE:CZ	2.49	0.48
1:D:35:LYS:HE3	1:D:43:LEU:HD22	1.95	0.48
1:C:259:LEU:C	1:C:259:LEU:HD23	2.33	0.48
1:D:106:THR:HG23	1:D:193:ASN:CG	2.33	0.47
1:A:22:GLU:HG3	1:A:284:HIS:CG	2.49	0.47
1:D:203:VAL:HG13	1:D:212:TYR:CZ	2.48	0.47

*Continued on next page...*

*Continued from previous page...*

Atom-1	Atom-2	Interatomic distance (Å)	Clash overlap (Å)
1:B:152:SER:O	1:B:152:SER:OG	2.32	0.47
1:C:267:ILE:O	1:C:271:ILE:HG22	2.14	0.47
1:D:190:VAL:HA	1:D:268:ALA:HB2	1.96	0.47
1:B:158:VAL:O	1:B:160:ALA:N	2.47	0.47
1:C:31:TYR:HA	1:C:34:LYS:HG2	1.97	0.47
1:D:26:ILE:HG23	1:D:285:TYR:HE1	1.80	0.47
1:A:121:VAL:HG12	1:A:122:LYS:O	2.15	0.47
1:D:24:SER:HB3	1:D:205:THR:HB	1.97	0.47
1:E:278:TYR:O	1:E:282:LYS:HG3	2.15	0.47
1:D:17:SER:OG	1:D:206:LEU:O	2.33	0.46
1:D:68:PHE:CD2	1:D:85:VAL:HG21	2.50	0.46
1:D:127:LEU:O	1:D:131:THR:HG23	2.15	0.46
1:D:229:GLU:HG2	1:D:234:ASN:HD21	1.80	0.46
1:C:97:ILE:HG23	1:C:102:SER:HB2	1.96	0.46
1:D:38:TYR:HB2	1:D:43:LEU:HD21	1.97	0.46
1:A:98:ILE:C	1:A:98:ILE:HD13	2.36	0.46
1:C:17:SER:HA	1:E:15:ILE:HG13	1.97	0.46
1:C:209:GLY:HA2	1:C:212:TYR:HB2	1.96	0.46
1:A:81:MET:O	1:A:85:VAL:HG23	2.15	0.46
1:C:22:GLU:OE2	1:C:284:HIS:HB3	2.15	0.46
1:D:19:CYS:O	1:D:27:ARG:NH2	2.48	0.46
1:E:27:ARG:NH2	1:E:204:LEU:O	2.49	0.46
1:B:92:ILE:HG13	1:B:92:ILE:O	2.15	0.46
1:B:187:SER:O	1:B:190:VAL:HG22	2.15	0.46
1:C:257:ASN:C	1:C:260:PRO:HD2	2.36	0.46
1:A:206:LEU:O	1:A:206:LEU:HD12	2.16	0.45
1:B:293:ARG:NH1	1:B:293:ARG:HA	2.31	0.45
1:D:93:ALA:HA	1:D:96:CYS:SG	2.56	0.45
1:E:230:HIS:HB3	1:E:233:ALA:HB3	1.97	0.45
1:B:194:ILE:CD1	1:B:272:VAL:HG11	2.45	0.45
1:C:193:ASN:ND2	1:C:265:ASN:O	2.47	0.45
1:B:212:TYR:O	1:B:216:VAL:HG23	2.17	0.45
1:E:252:GLN:HG2	1:E:256:LYS:CE	2.46	0.45
1:D:22:GLU:OE1	1:D:23:GLU:HG3	2.16	0.45
1:E:11:ASP:N	1:E:11:ASP:OD1	2.48	0.45
1:E:22:GLU:HB3	1:E:284:HIS:CD2	2.52	0.45
1:E:192:CYS:SG	1:E:223:PHE:CE1	3.05	0.45
1:B:125:ASP:O	1:B:129:VAL:HG13	2.17	0.45
1:C:210:ALA:CB	1:D:210:ALA:HB2	2.46	0.45
1:E:167:PHE:HE1	1:E:246:THR:HG22	1.82	0.45
1:C:69:TYR:CD2	1:C:74:ARG:HD3	2.52	0.45

*Continued on next page...*



*Continued from previous page...*

Atom-1	Atom-2	Interatomic distance (Å)	Clash overlap (Å)
1:E:252:GLN:HG2	1:E:256:LYS:HE2	1.99	0.45
1:D:190:VAL:HG12	1:D:264:GLY:O	2.17	0.44
1:C:70:TYR:CD1	1:E:78:GLY:HA3	2.52	0.44
1:A:107:GLY:CA	2:A:401:R7M:C18	2.89	0.44
1:D:202:PHE:O	1:D:206:LEU:HG	2.17	0.44
1:A:69:TYR:HE1	1:A:79:ALA:HB2	1.82	0.44
1:D:259:LEU:HB3	1:D:260:PRO:CD	2.37	0.44
1:A:46:LYS:HE2	1:D:280:ILE:HG23	1.98	0.44
1:A:175:GLU:O	1:A:178:VAL:HG22	2.18	0.44
1:B:97:ILE:HD12	2:B:401:R7M:O07	2.17	0.44
1:C:186:VAL:O	1:C:190:VAL:HG23	2.17	0.44
1:D:238:LEU:HD21	1:D:257:ASN:HD22	1.82	0.44
1:E:216:VAL:O	1:E:220:VAL:HG22	2.17	0.44
1:B:108:ASN:O	1:B:109:THR:C	2.56	0.44
1:B:293:ARG:HA	1:B:293:ARG:HH11	1.83	0.44
1:D:33:LYS:HG3	1:D:120:LYS:HB3	1.99	0.44
1:D:90:PHE:O	1:D:92:ILE:N	2.43	0.44
1:E:223:PHE:CE1	1:E:230:HIS:HB2	2.53	0.44
1:E:220:VAL:HA	1:E:223:PHE:HB3	2.00	0.44
1:A:16:LYS:HE2	1:A:16:LYS:HB3	1.64	0.44
1:C:17:SER:HB2	1:E:15:ILE:HD11	1.99	0.44
1:C:152:SER:HB3	1:E:187:SER:HB2	1.98	0.44
1:E:169:PHE:O	1:E:173:ILE:HG12	2.16	0.44
1:D:240:ILE:HD12	1:D:243:MET:HB2	1.99	0.44
1:D:27:ARG:NH1	1:E:10:LEU:HD13	2.33	0.43
1:C:12:PRO:HG2	1:D:16:LYS:HD3	1.99	0.43
1:E:137:ASN:HB3	1:E:232:ILE:HD12	2.00	0.43
1:C:105:PHE:H	1:C:137:ASN:ND2	2.15	0.43
1:C:205:THR:HG21	1:D:99:CYS:HB3	1.99	0.43
1:E:193:ASN:HB3	1:E:268:ALA:HB3	1.99	0.43
1:C:23:GLU:O	1:C:27:ARG:HG3	2.17	0.43
1:D:17:SER:O	1:D:207:LYS:NZ	2.51	0.43
1:A:267:ILE:HG23	1:A:268:ALA:N	2.33	0.43
1:B:27:ARG:HG2	1:B:204:LEU:HD22	1.99	0.43
1:C:268:ALA:O	1:C:272:VAL:HG12	2.19	0.43
1:D:40:ASN:H	1:D:40:ASN:ND2	2.16	0.43
1:B:231:ILE:HG23	1:B:232:ILE:HD12	2.01	0.43
1:E:69:TYR:HE1	1:E:79:ALA:CB	2.30	0.43
1:E:185:CYS:SG	1:E:257:ASN:OD1	2.77	0.43
1:A:292:LYS:HE2	1:A:292:LYS:HB3	1.81	0.43
1:A:292:LYS:HG3	1:C:9:VAL:HG11	2.00	0.43

*Continued on next page...*



*Continued from previous page...*

Atom-1	Atom-2	Interatomic distance (Å)	Clash overlap (Å)
1:C:251:TYR:CE2	1:C:255:ILE:HD12	2.54	0.43
1:A:125:ASP:HA	1:A:128:ARG:HG2	2.00	0.43
1:B:93:ALA:O	1:B:97:ILE:HG13	2.18	0.43
1:A:102:SER:OG	1:A:103:ASP:N	2.51	0.43
1:D:163:LYS:HD2	1:D:163:LYS:N	2.34	0.43
1:E:192:CYS:HB2	1:E:228:TYR:CB	2.43	0.43
1:C:83:VAL:HB	1:D:67:LEU:HD21	2.01	0.42
1:E:91:PRO:HG3	1:E:220:VAL:HG23	2.01	0.42
1:E:182:PHE:CE2	1:E:260:PRO:HG3	2.54	0.42
1:E:189:ALA:HB2	1:E:261:THR:HA	2.01	0.42
1:A:29:VAL:HG11	1:A:118:GLU:HG3	2.00	0.42
1:D:94:PHE:CD1	1:D:216:VAL:HG21	2.54	0.42
1:D:192:CYS:HB2	1:D:228:TYR:HB3	2.02	0.42
1:D:199:ALA:HB1	1:D:216:VAL:HG23	2.01	0.42
1:A:59:HIS:HD1	1:D:228:TYR:HH	1.68	0.42
1:D:59:HIS:HD2	1:D:149:SER:OG	2.03	0.42
1:E:128:ARG:HA	1:E:131:THR:HG22	2.00	0.42
1:A:197:CYS:SG	1:A:273:LEU:HD13	2.60	0.42
1:A:202:PHE:HE2	1:B:92:ILE:HD11	1.85	0.42
1:B:41:LEU:HD23	1:B:41:LEU:HA	1.86	0.42
1:E:61:SER:HA	1:E:89:THR:HG23	2.01	0.42
1:E:186:VAL:O	1:E:190:VAL:HG13	2.19	0.42
1:C:18:VAL:HG11	1:D:212:TYR:CZ	2.55	0.42
1:C:206:LEU:HD11	1:D:209:GLY:HA2	2.02	0.42
1:D:180:HIS:HB2	1:D:185:CYS:SG	2.59	0.42
1:B:201:TYR:O	1:B:205:THR:HG22	2.19	0.42
1:D:26:ILE:HG23	1:D:285:TYR:CE1	2.55	0.42
1:E:187:SER:O	1:E:190:VAL:HG22	2.20	0.42
1:D:11:ASP:OD1	1:D:11:ASP:N	2.44	0.42
1:E:106:THR:HG23	2:E:401:R7M:O08	2.19	0.42
1:B:193:ASN:HB2	1:B:265:ASN:OD1	2.19	0.41
1:B:275:LEU:HD12	1:B:275:LEU:HA	1.94	0.41
1:C:254:TYR:HA	1:C:258:LEU:HG	2.02	0.41
1:A:107:GLY:HA3	2:A:401:R7M:C20	2.47	0.41
1:B:43:LEU:HB2	1:B:132:ILE:HG21	2.02	0.41
1:C:112:VAL:HG12	1:C:126:TYR:HD1	1.84	0.41
1:D:10:LEU:HD23	1:D:10:LEU:O	2.20	0.41
1:E:81:MET:O	1:E:85:VAL:HG23	2.19	0.41
1:B:22:GLU:HB3	1:B:284:HIS:CD2	2.55	0.41
1:C:16:LYS:HD3	1:E:12:PRO:HG2	2.02	0.41
1:D:109:THR:O	1:D:113:THR:HG23	2.20	0.41

*Continued on next page...*

*Continued from previous page...*

Atom-1	Atom-2	Interatomic distance (Å)	Clash overlap (Å)
1:D:121:VAL:HG12	1:D:122:LYS:O	2.20	0.41
1:C:259:LEU:HD23	1:C:259:LEU:O	2.20	0.41
1:A:18:VAL:HG21	1:B:212:TYR:CE2	2.56	0.41
1:A:41:LEU:HD23	1:A:41:LEU:HA	1.88	0.41
1:C:38:TYR:HD1	1:C:38:TYR:HA	1.67	0.41
1:C:105:PHE:H	1:C:137:ASN:HD21	1.67	0.41
1:D:222:ALA:O	1:D:226:ALA:HB2	2.21	0.41
1:A:59:HIS:HD2	1:A:149:SER:HB3	1.86	0.41
1:C:152:SER:HA	1:E:184:GLU:HA	2.03	0.41
1:E:236:TYR:O	1:E:240:ILE:HG22	2.20	0.41
1:D:106:THR:CG2	1:D:193:ASN:HD21	2.14	0.41
1:E:168:GLN:NE2	1:E:172:ASP:OD2	2.54	0.41
1:D:181:THR:HG22	1:D:182:PHE:H	1.86	0.41
1:B:52:MET:HG2	1:B:52:MET:H	1.72	0.41
1:B:81:MET:O	1:B:85:VAL:HG23	2.21	0.41
1:B:104:LEU:HD23	1:B:104:LEU:HA	1.85	0.41
1:B:249:THR:HG23	1:B:251:TYR:H	1.85	0.41
1:E:258:LEU:HD12	1:E:258:LEU:HA	1.88	0.41
1:B:49:LEU:HD23	1:B:49:LEU:HA	1.80	0.41
1:A:240:ILE:HA	1:A:240:ILE:HD12	1.75	0.40
1:C:99:CYS:SG	1:E:206:LEU:HD11	2.62	0.40
1:D:181:THR:HG22	1:D:182:PHE:N	2.37	0.40
1:C:90:PHE:O	1:C:92:ILE:N	2.55	0.40
1:E:185:CYS:HB3	1:E:260:PRO:HB2	2.03	0.40
1:B:192:CYS:HB2	1:B:228:TYR:CB	2.51	0.40
1:C:46:LYS:HB3	1:C:102:SER:HA	2.02	0.40
1:C:113:THR:O	1:C:116:LEU:HB3	2.21	0.40
1:C:208:ASP:HA	1:E:17:SER:OG	2.20	0.40
1:D:178:VAL:HG11	1:D:252:GLN:OE1	2.21	0.40

There are no symmetry-related clashes.

## 5.3 Torsion angles ⓘ

### 5.3.1 Protein backbone ⓘ

In the following table, the Percentiles column shows the percent Ramachandran outliers of the chain as a percentile score with respect to all PDB entries followed by that with respect to all EM entries.

The Analysed column shows the number of residues for which the backbone conformation was analysed, and the total number of residues.

Mol	Chain	Analysed	Favoured	Allowed	Outliers	Percentiles	
1	A	279/309 (90%)	257 (92%)	22 (8%)	0	100	100
1	B	283/309 (92%)	258 (91%)	25 (9%)	0	100	100
1	C	280/309 (91%)	252 (90%)	28 (10%)	0	100	100
1	D	282/309 (91%)	261 (93%)	21 (7%)	0	100	100
1	E	286/309 (93%)	265 (93%)	21 (7%)	0	100	100
All	All	1410/1545 (91%)	1293 (92%)	117 (8%)	0	100	100

There are no Ramachandran outliers to report.

### 5.3.2 Protein sidechains ⓘ

In the following table, the Percentiles column shows the percent sidechain outliers of the chain as a percentile score with respect to all PDB entries followed by that with respect to all EM entries.

The Analysed column shows the number of residues for which the sidechain conformation was analysed, and the total number of residues.

Mol	Chain	Analysed	Rotameric	Outliers	Percentiles	
1	A	231/258 (90%)	212 (92%)	19 (8%)	11	30
1	B	235/258 (91%)	217 (92%)	18 (8%)	13	32
1	C	232/258 (90%)	212 (91%)	20 (9%)	10	28
1	D	234/258 (91%)	215 (92%)	19 (8%)	11	30
1	E	238/258 (92%)	222 (93%)	16 (7%)	16	40
All	All	1170/1290 (91%)	1078 (92%)	92 (8%)	16	31

All (92) residues with a non-rotameric sidechain are listed below:

Mol	Chain	Res	Type
1	A	33	LYS
1	A	52	MET
1	A	82	SER
1	A	98	ILE
1	A	130	MET
1	A	165	HIS
1	A	179	HIS
1	A	192	CYS
1	A	193	ASN
1	A	195	PHE

*Continued on next page...*

*Continued from previous page...*

Mol	Chain	Res	Type
1	A	197	CYS
1	A	201	TYR
1	A	207	LYS
1	A	212	TYR
1	A	223	PHE
1	A	247	LYS
1	A	250	VAL
1	A	283	GLU
1	A	284	HIS
1	B	31	TYR
1	B	33	LYS
1	B	42	ASN
1	B	49	LEU
1	B	73	LEU
1	B	89	THR
1	B	125	ASP
1	B	135	PHE
1	B	152	SER
1	B	156	THR
1	B	158	VAL
1	B	162	GLU
1	B	195	PHE
1	B	201	TYR
1	B	215	SER
1	B	223	PHE
1	B	246	THR
1	B	292	LYS
1	C	17	SER
1	C	28	CYS
1	C	38	TYR
1	C	81	MET
1	C	110	LEU
1	C	148	VAL
1	C	149	SER
1	C	163	LYS
1	C	176	LYS
1	C	185	CYS
1	C	192	CYS
1	C	201	TYR
1	C	203	VAL
1	C	212	TYR
1	C	221	TYR

*Continued on next page...*

*Continued from previous page...*

Mol	Chain	Res	Type
1	C	223	PHE
1	C	247	LYS
1	C	271	ILE
1	C	272	VAL
1	C	282	LYS
1	D	22	GLU
1	D	28	CYS
1	D	40	ASN
1	D	92	ILE
1	D	96	CYS
1	D	104	LEU
1	D	130	MET
1	D	143	SER
1	D	156	THR
1	D	163	LYS
1	D	192	CYS
1	D	193	ASN
1	D	218	PHE
1	D	221	TYR
1	D	223	PHE
1	D	275	LEU
1	D	286	TYR
1	D	289	GLU
1	D	291	SER
1	E	68	PHE
1	E	113	THR
1	E	122	LYS
1	E	133	SER
1	E	143	SER
1	E	181	THR
1	E	185	CYS
1	E	195	PHE
1	E	201	TYR
1	E	212	TYR
1	E	221	TYR
1	E	223	PHE
1	E	263	LEU
1	E	273	LEU
1	E	286	TYR
1	E	291	SER

Sometimes sidechains can be flipped to improve hydrogen bonding and reduce clashes. All (16) such sidechains are listed below:

Mol	Chain	Res	Type
1	A	284	HIS
1	B	59	HIS
1	B	137	ASN
1	B	165	HIS
1	B	230	HIS
1	B	284	HIS
1	B	287	ASN
1	C	71	HIS
1	C	137	ASN
1	C	239	ASN
1	D	40	ASN
1	D	59	HIS
1	D	193	ASN
1	D	234	ASN
1	D	257	ASN
1	E	59	HIS

### 5.3.3 RNA [i](#)

There are no RNA molecules in this entry.

## 5.4 Non-standard residues in protein, DNA, RNA chains [i](#)

There are no non-standard protein/DNA/RNA residues in this entry.

## 5.5 Carbohydrates [i](#)

There are no monosaccharides in this entry.

## 5.6 Ligand geometry [i](#)

5 ligands are modelled in this entry.

In the following table, the Counts columns list the number of bonds (or angles) for which Mogul statistics could be retrieved, the number of bonds (or angles) that are observed in the model and the number of bonds (or angles) that are defined in the Chemical Component Dictionary. The Link column lists molecule types, if any, to which the group is linked. The Z score for a bond length (or angle) is the number of standard deviations the observed value is removed from the expected value. A bond length (or angle) with  $|Z| > 2$  is considered an outlier worth inspection. RMSZ is the root-mean-square of all Z scores of the bond lengths (or angles).

Mol	Type	Chain	Res	Link	Bond lengths			Bond angles		
					Counts	RMSZ	# Z  > 2	Counts	RMSZ	# Z  > 2
2	R7M	D	401	-	21,22,22	6.73	12 (57%)	29,36,36	5.46	10 (34%)
2	R7M	B	401	-	21,22,22	6.45	12 (57%)	29,36,36	4.56	9 (31%)
2	R7M	A	401	-	21,22,22	6.41	11 (52%)	29,36,36	4.42	8 (27%)
2	R7M	E	401	-	21,22,22	6.48	11 (52%)	29,36,36	4.44	7 (24%)
2	R7M	C	401	-	21,22,22	6.68	11 (52%)	29,36,36	5.34	11 (37%)

In the following table, the Chirals column lists the number of chiral outliers, the number of chiral centers analysed, the number of these observed in the model and the number defined in the Chemical Component Dictionary. Similar counts are reported in the Torsion and Rings columns. '-' means no outliers of that kind were identified.

Mol	Type	Chain	Res	Link	Chirals	Torsions	Rings
2	R7M	D	401	-	-	17/17/34/34	0/2/2/2
2	R7M	B	401	-	-	2/17/34/34	0/2/2/2
2	R7M	A	401	-	-	2/17/34/34	0/2/2/2
2	R7M	E	401	-	-	2/17/34/34	0/2/2/2
2	R7M	C	401	-	-	17/17/34/34	0/2/2/2

All (57) bond length outliers are listed below:

Mol	Chain	Res	Type	Atoms	Z	Observed(Å)	Ideal(Å)
2	D	401	R7M	C14-C13	-20.38	1.19	1.48
2	C	401	R7M	C14-C13	-20.08	1.19	1.48
2	E	401	R7M	C14-C13	-19.59	1.20	1.48
2	B	401	R7M	C14-C13	-19.25	1.20	1.48
2	A	401	R7M	C14-C13	-19.23	1.20	1.48
2	C	401	R7M	C20-C19	-13.29	1.12	1.38
2	D	401	R7M	C20-C19	-13.17	1.12	1.38
2	B	401	R7M	C20-C19	-12.16	1.14	1.38
2	E	401	R7M	C20-C19	-12.09	1.14	1.38
2	A	401	R7M	C20-C19	-12.07	1.14	1.38
2	C	401	R7M	C17-C19	-10.85	1.20	1.38
2	D	401	R7M	C17-C19	-10.78	1.20	1.38
2	A	401	R7M	C18-C14	10.68	1.56	1.39
2	B	401	R7M	C18-C14	10.65	1.56	1.39
2	E	401	R7M	C18-C14	10.56	1.56	1.39
2	E	401	R7M	C17-C19	-10.20	1.21	1.38
2	B	401	R7M	C17-C19	-10.17	1.21	1.38
2	A	401	R7M	C17-C19	-10.08	1.21	1.38
2	D	401	R7M	C18-C14	9.74	1.55	1.39

*Continued on next page...*

*Continued from previous page...*

Mol	Chain	Res	Type	Atoms	Z	Observed(Å)	Ideal(Å)
2	C	401	R7M	C18-C14	9.69	1.55	1.39
2	D	401	R7M	O06-C10	7.54	1.57	1.43
2	B	401	R7M	O06-C10	7.50	1.57	1.43
2	E	401	R7M	O06-C10	7.35	1.57	1.43
2	C	401	R7M	O06-C10	7.26	1.57	1.43
2	A	401	R7M	O06-C10	7.17	1.57	1.43
2	C	401	R7M	C11-C10	5.81	1.66	1.51
2	D	401	R7M	C11-C10	5.70	1.66	1.51
2	B	401	R7M	C11-C10	5.64	1.65	1.51
2	E	401	R7M	C11-C10	5.52	1.65	1.51
2	A	401	R7M	C11-C10	5.41	1.65	1.51
2	E	401	R7M	C11-C13	-4.11	1.44	1.50
2	A	401	R7M	C11-C13	-3.93	1.45	1.50
2	D	401	R7M	C11-C13	-3.90	1.45	1.50
2	B	401	R7M	C11-C13	-3.82	1.45	1.50
2	C	401	R7M	C11-C13	-3.71	1.45	1.50
2	D	401	R7M	C18-C20	-3.69	1.32	1.38
2	C	401	R7M	C18-C20	-3.64	1.32	1.38
2	C	401	R7M	C14-C15	-3.44	1.34	1.40
2	D	401	R7M	C14-C15	-3.23	1.34	1.40
2	E	401	R7M	C18-C20	-2.86	1.33	1.38
2	B	401	R7M	C18-C20	-2.85	1.33	1.38
2	A	401	R7M	C18-C20	-2.84	1.33	1.38
2	E	401	R7M	O08-C13	-2.70	1.18	1.22
2	B	401	R7M	O08-C13	-2.58	1.18	1.22
2	D	401	R7M	O08-C13	-2.55	1.18	1.22
2	A	401	R7M	O08-C13	-2.54	1.18	1.22
2	D	401	R7M	O06-C15	2.53	1.41	1.37
2	C	401	R7M	O08-C13	-2.43	1.18	1.22
2	A	401	R7M	O06-C15	2.42	1.41	1.37
2	B	401	R7M	C17-C15	2.41	1.43	1.38
2	A	401	R7M	C17-C15	2.41	1.43	1.38
2	E	401	R7M	C17-C15	2.40	1.43	1.38
2	E	401	R7M	O06-C15	2.32	1.41	1.37
2	D	401	R7M	C17-C15	2.25	1.42	1.38
2	B	401	R7M	O06-C15	2.24	1.41	1.37
2	C	401	R7M	O06-C15	2.12	1.40	1.37
2	B	401	R7M	C14-C15	-2.10	1.36	1.40

All (45) bond angle outliers are listed below:

*Continued on next page...*



*Continued from previous page...*

Mol	Chain	Res	Type	Atoms	Z	Observed(°)	Ideal(°)
-----	-------	-----	------	-------	---	-------------	----------

Mol	Chain	Res	Type	Atoms	Z	Observed(°)	Ideal(°)
2	D	401	R7M	C15-C14-C13	24.79	134.12	119.85
2	C	401	R7M	C15-C14-C13	24.04	133.69	119.85
2	B	401	R7M	C15-C14-C13	20.41	131.60	119.85
2	E	401	R7M	C15-C14-C13	20.14	131.44	119.85
2	A	401	R7M	C15-C14-C13	20.03	131.38	119.85
2	E	401	R7M	C20-C19-C17	8.77	132.60	120.53
2	B	401	R7M	C20-C19-C17	8.59	132.35	120.53
2	A	401	R7M	C20-C19-C17	8.44	132.14	120.53
2	C	401	R7M	C18-C14-C15	-7.86	107.89	118.21
2	D	401	R7M	C18-C14-C15	-7.45	108.43	118.21
2	D	401	R7M	C20-C19-C17	7.17	130.40	120.53
2	C	401	R7M	C20-C19-C17	7.10	130.30	120.53
2	B	401	R7M	C18-C14-C15	-6.36	109.86	118.21
2	A	401	R7M	C18-C14-C15	-6.32	109.92	118.21
2	E	401	R7M	C18-C14-C15	-6.04	110.28	118.21
2	D	401	R7M	C18-C20-C19	-5.45	113.06	119.73
2	C	401	R7M	C18-C20-C19	-5.43	113.10	119.73
2	C	401	R7M	O06-C15-C17	5.40	125.02	116.42
2	D	401	R7M	O06-C15-C17	5.29	124.85	116.42
2	D	401	R7M	C15-C17-C19	4.15	126.36	119.05
2	C	401	R7M	C15-C17-C19	4.04	126.17	119.05
2	B	401	R7M	O06-C15-C17	4.04	122.85	116.42
2	C	401	R7M	C20-C18-C14	3.99	127.40	120.94
2	D	401	R7M	C20-C18-C14	3.94	127.31	120.94
2	D	401	R7M	C17-C15-C14	-3.61	114.43	121.35
2	E	401	R7M	O06-C15-C17	3.47	121.95	116.42
2	D	401	R7M	C16-C12-C10	-3.42	108.66	119.31
2	A	401	R7M	O06-C15-C17	3.37	121.79	116.42
2	C	401	R7M	C17-C15-C14	-3.24	115.14	121.35
2	B	401	R7M	C11-C13-C14	3.08	120.75	116.49
2	B	401	R7M	C10-O06-C15	-3.05	112.49	117.73
2	B	401	R7M	O08-C13-C11	-2.96	117.07	121.16
2	A	401	R7M	C16-C12-C10	-2.96	110.10	119.31
2	C	401	R7M	C10-O06-C15	-2.95	112.67	117.73
2	D	401	R7M	C11-C13-C14	2.95	120.57	116.49
2	E	401	R7M	C16-C12-C10	-2.88	110.37	119.31
2	A	401	R7M	C10-O06-C15	-2.85	112.84	117.73
2	B	401	R7M	C16-C12-C10	-2.82	110.56	119.31
2	C	401	R7M	C11-C13-C14	2.62	120.12	116.49
2	B	401	R7M	O06-C15-C14	-2.41	118.66	121.94
2	C	401	R7M	C16-C12-C10	-2.39	111.89	119.31

*Continued on next page...*

*Continued from previous page...*

Mol	Chain	Res	Type	Atoms	Z	Observed(°)	Ideal(°)
2	A	401	R7M	O08-C13-C11	-2.34	117.94	121.16
2	E	401	R7M	C10-O06-C15	-2.20	113.95	117.73
2	E	401	R7M	O08-C13-C11	-2.14	118.21	121.16
2	A	401	R7M	C11-C13-C14	2.14	119.45	116.49

There are no chirality outliers.

All (40) torsion outliers are listed below:

Mol	Chain	Res	Type	Atoms
2	C	401	R7M	C11-C10-C12-F01
2	C	401	R7M	C11-C10-C12-F02
2	C	401	R7M	O06-C10-C12-F01
2	C	401	R7M	O06-C10-C12-F02
2	C	401	R7M	O07-C10-C12-F02
2	D	401	R7M	C11-C10-C12-F01
2	D	401	R7M	C11-C10-C12-F02
2	D	401	R7M	O06-C10-C12-F01
2	D	401	R7M	O06-C10-C12-F02
2	D	401	R7M	O07-C10-C12-F01
2	D	401	R7M	O07-C10-C12-F02
2	D	401	R7M	C17-C19-O09-C21
2	C	401	R7M	C17-C19-O09-C21
2	C	401	R7M	C20-C19-O09-C21
2	D	401	R7M	C20-C19-O09-C21
2	E	401	R7M	C17-C19-O09-C21
2	E	401	R7M	C20-C19-O09-C21
2	C	401	R7M	C10-C12-C16-F03
2	B	401	R7M	C17-C19-O09-C21
2	B	401	R7M	C20-C19-O09-C21
2	A	401	R7M	C20-C19-O09-C21
2	C	401	R7M	C10-C12-C16-F04
2	A	401	R7M	C17-C19-O09-C21
2	C	401	R7M	F01-C12-C16-F04
2	C	401	R7M	C10-C12-C16-F05
2	C	401	R7M	F01-C12-C16-F05
2	C	401	R7M	F01-C12-C16-F03
2	C	401	R7M	F02-C12-C16-F03
2	C	401	R7M	F02-C12-C16-F04
2	C	401	R7M	F02-C12-C16-F05
2	D	401	R7M	C10-C12-C16-F04
2	D	401	R7M	F02-C12-C16-F03
2	D	401	R7M	C10-C12-C16-F03

*Continued on next page...*

*Continued from previous page...*

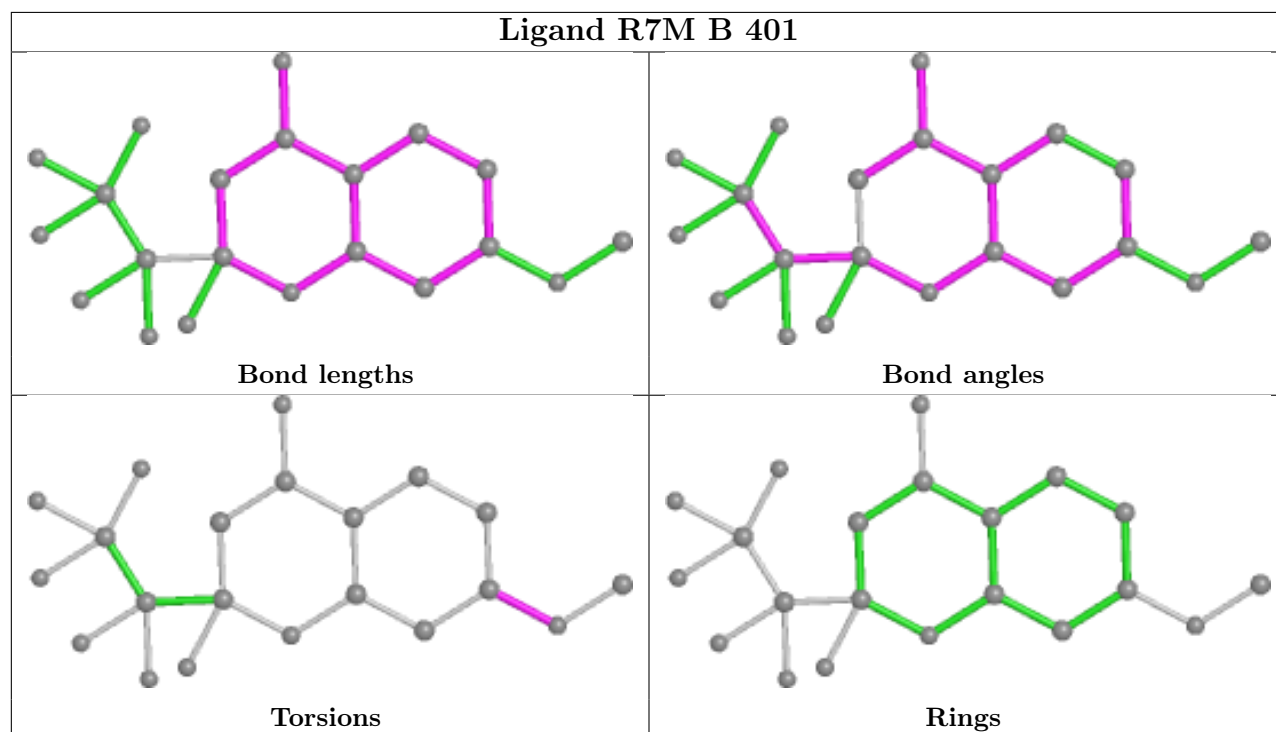
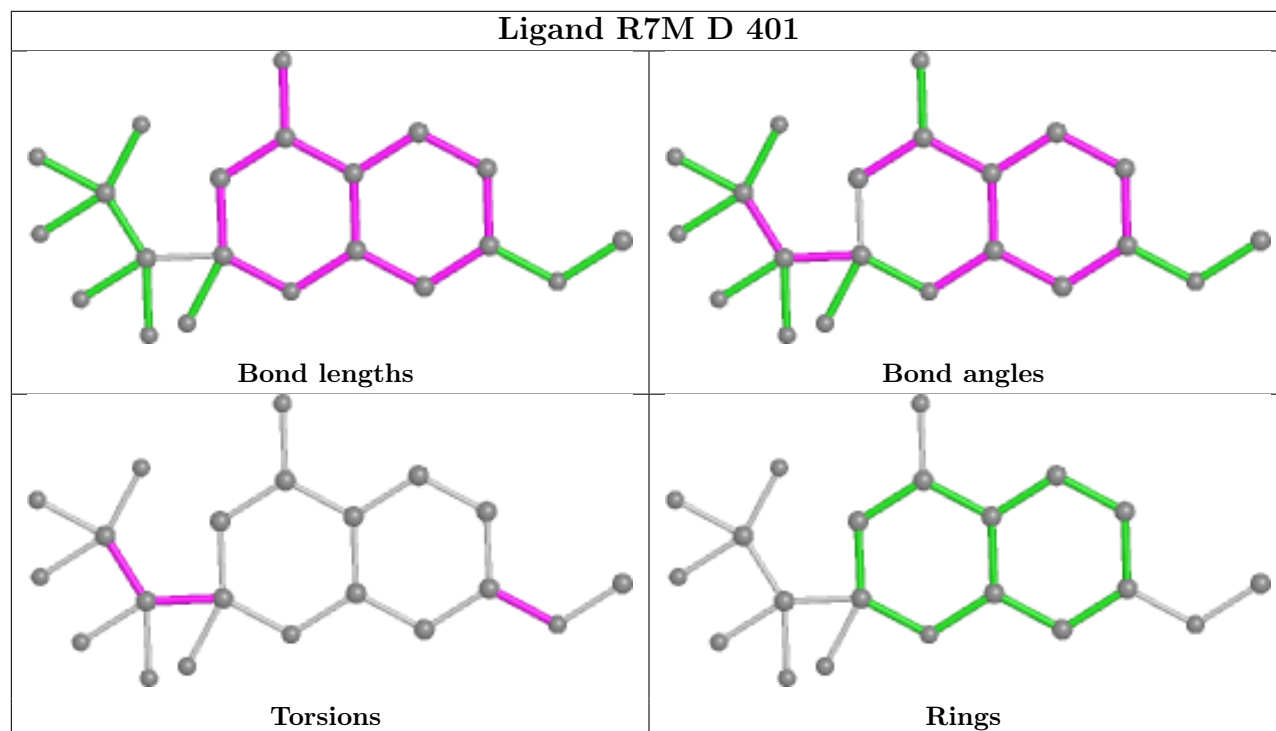
Mol	Chain	Res	Type	Atoms
2	D	401	R7M	F01-C12-C16-F05
2	D	401	R7M	F01-C12-C16-F04
2	D	401	R7M	F02-C12-C16-F05
2	D	401	R7M	F01-C12-C16-F03
2	C	401	R7M	O07-C10-C12-F01
2	D	401	R7M	F02-C12-C16-F04
2	D	401	R7M	C10-C12-C16-F05

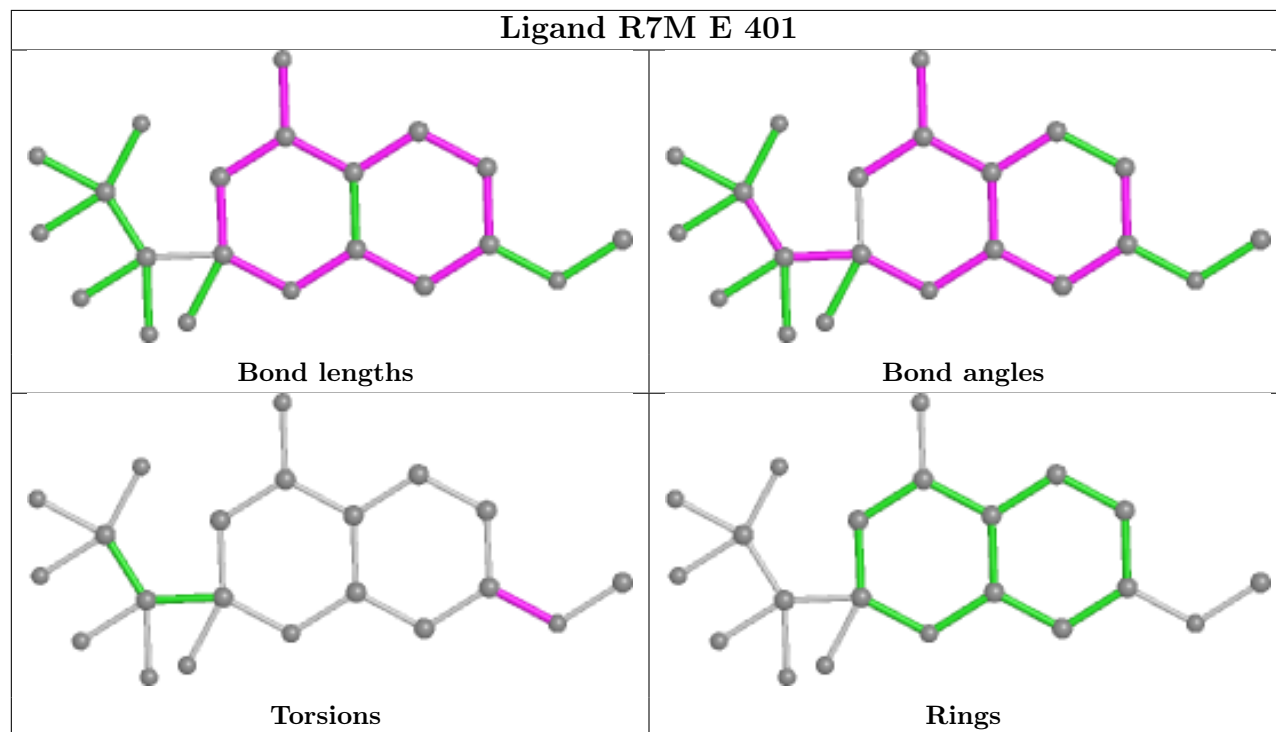
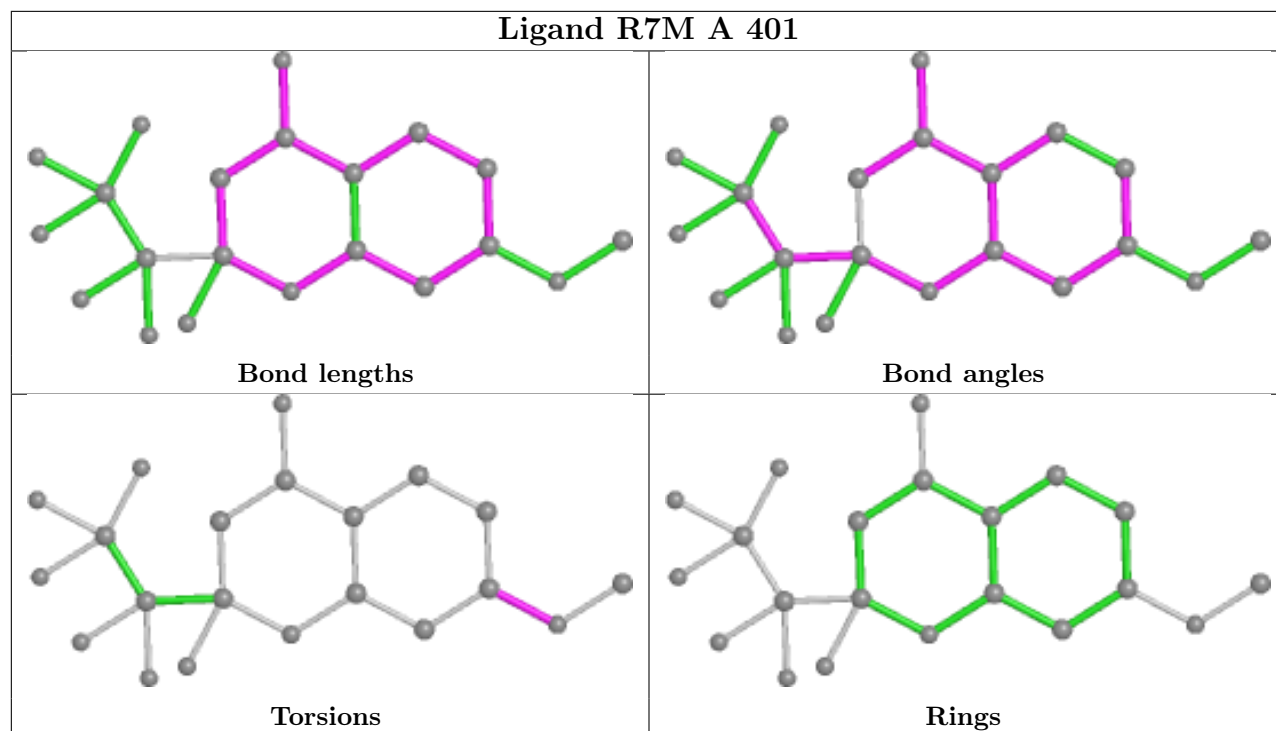
There are no ring outliers.

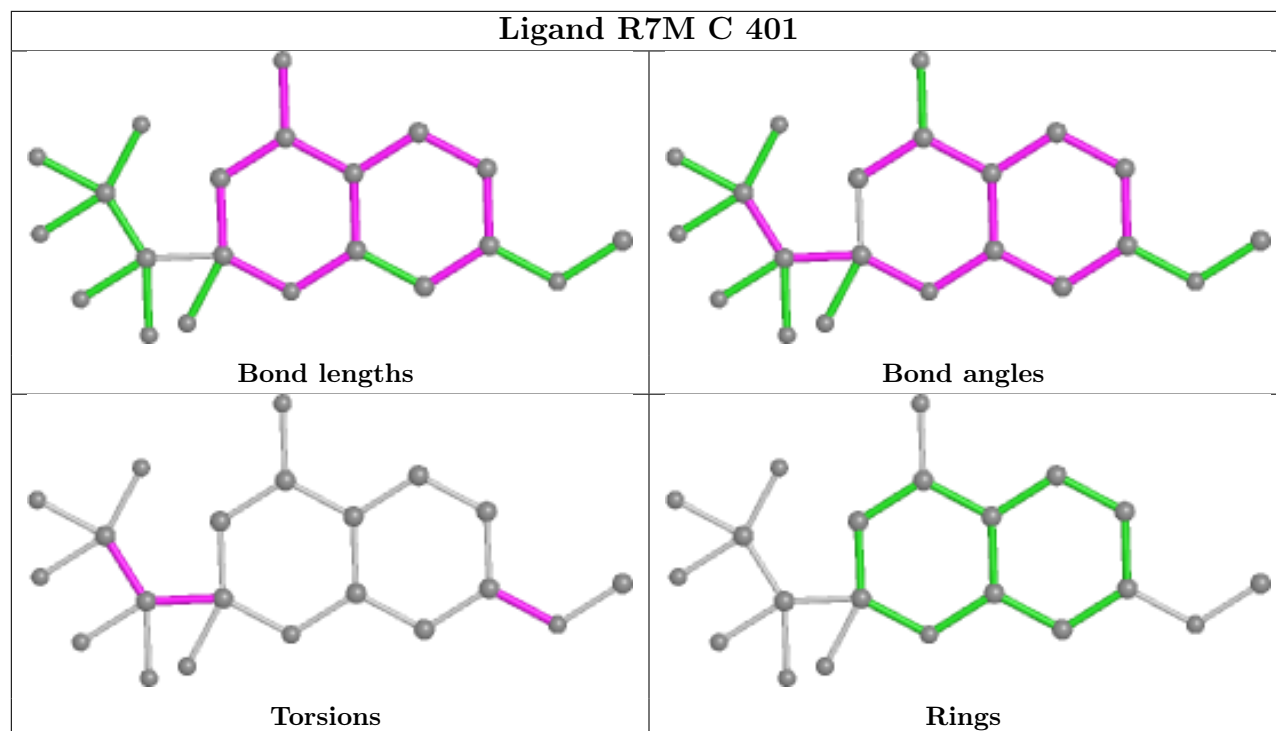
5 monomers are involved in 24 short contacts:

Mol	Chain	Res	Type	Clashes	Symm-Clashes
2	D	401	R7M	1	0
2	B	401	R7M	7	0
2	A	401	R7M	7	0
2	E	401	R7M	8	0
2	C	401	R7M	1	0

The following is a two-dimensional graphical depiction of Mogul quality analysis of bond lengths, bond angles, torsion angles, and ring geometry for all instances of the Ligand of Interest. In addition, ligands with molecular weight > 250 and outliers as shown on the validation Tables will also be included. For torsion angles, if less than 5% of the Mogul distribution of torsion angles is within 10 degrees of the torsion angle in question, then that torsion angle is considered an outlier. Any bond that is central to one or more torsion angles identified as an outlier by Mogul will be highlighted in the graph. For rings, the root-mean-square deviation (RMSD) between the ring in question and similar rings identified by Mogul is calculated over all ring torsion angles. If the average RMSD is greater than 60 degrees and the minimal RMSD between the ring in question and any Mogul-identified rings is also greater than 60 degrees, then that ring is considered an outlier. The outliers are highlighted in purple. The color gray indicates Mogul did not find sufficient equivalents in the CSD to analyse the geometry.







## 5.7 Other polymers [i](#)

There are no such residues in this entry.

## 5.8 Polymer linkage issues [i](#)

There are no chain breaks in this entry.

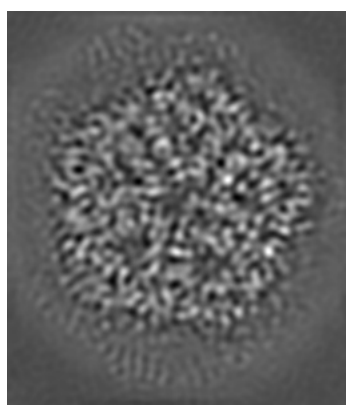
## 6 Map visualisation [i](#)

This section contains visualisations of the EMDB entry EMD-21355. These allow visual inspection of the internal detail of the map and identification of artifacts.

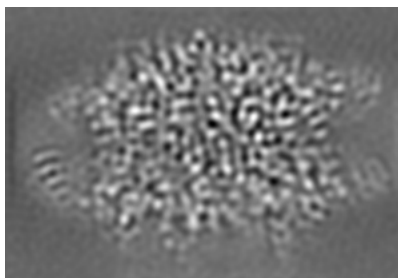
No raw map or half-maps were deposited for this entry and therefore no images, graphs, etc. pertaining to the raw map can be shown.

### 6.1 Orthogonal projections [i](#)

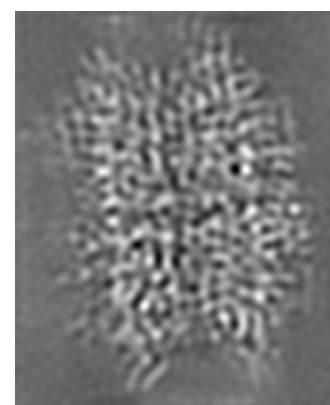
#### 6.1.1 Primary map



X



Y

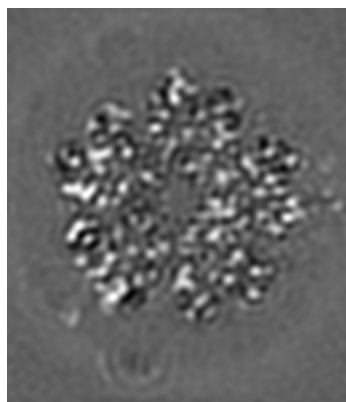


Z

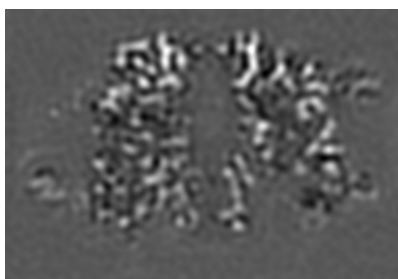
The images above show the map projected in three orthogonal directions.

### 6.2 Central slices [i](#)

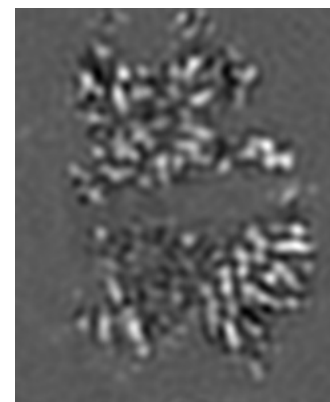
#### 6.2.1 Primary map



X Index: 38



Y Index: 47

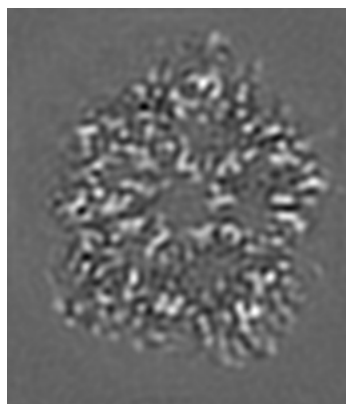


Z Index: 56

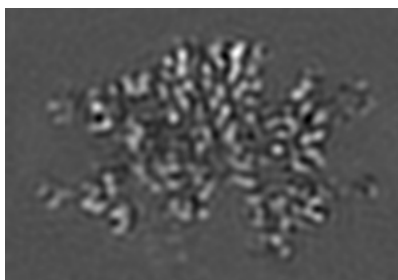
The images above show central slices of the map in three orthogonal directions.

## 6.3 Largest variance slices [i](#)

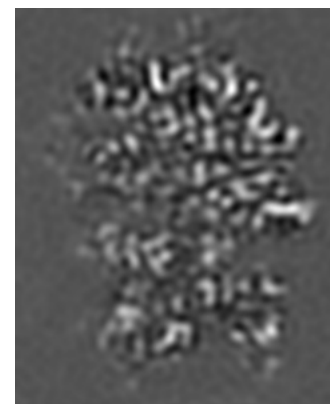
### 6.3.1 Primary map



X Index: 50



Y Index: 61

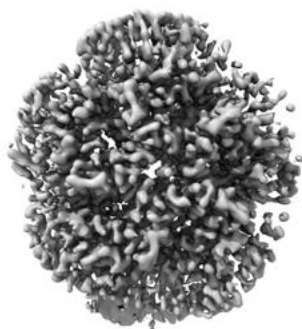


Z Index: 69

The images above show the largest variance slices of the map in three orthogonal directions.

## 6.4 Orthogonal surface views [i](#)

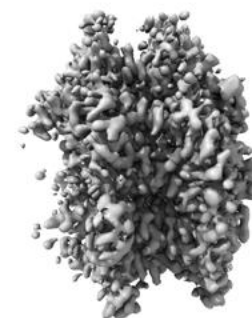
### 6.4.1 Primary map



X



Y



Z

The images above show the 3D surface view of the map at the recommended contour level 0.26. These images, in conjunction with the slice images, may facilitate assessment of whether an appropriate contour level has been provided.



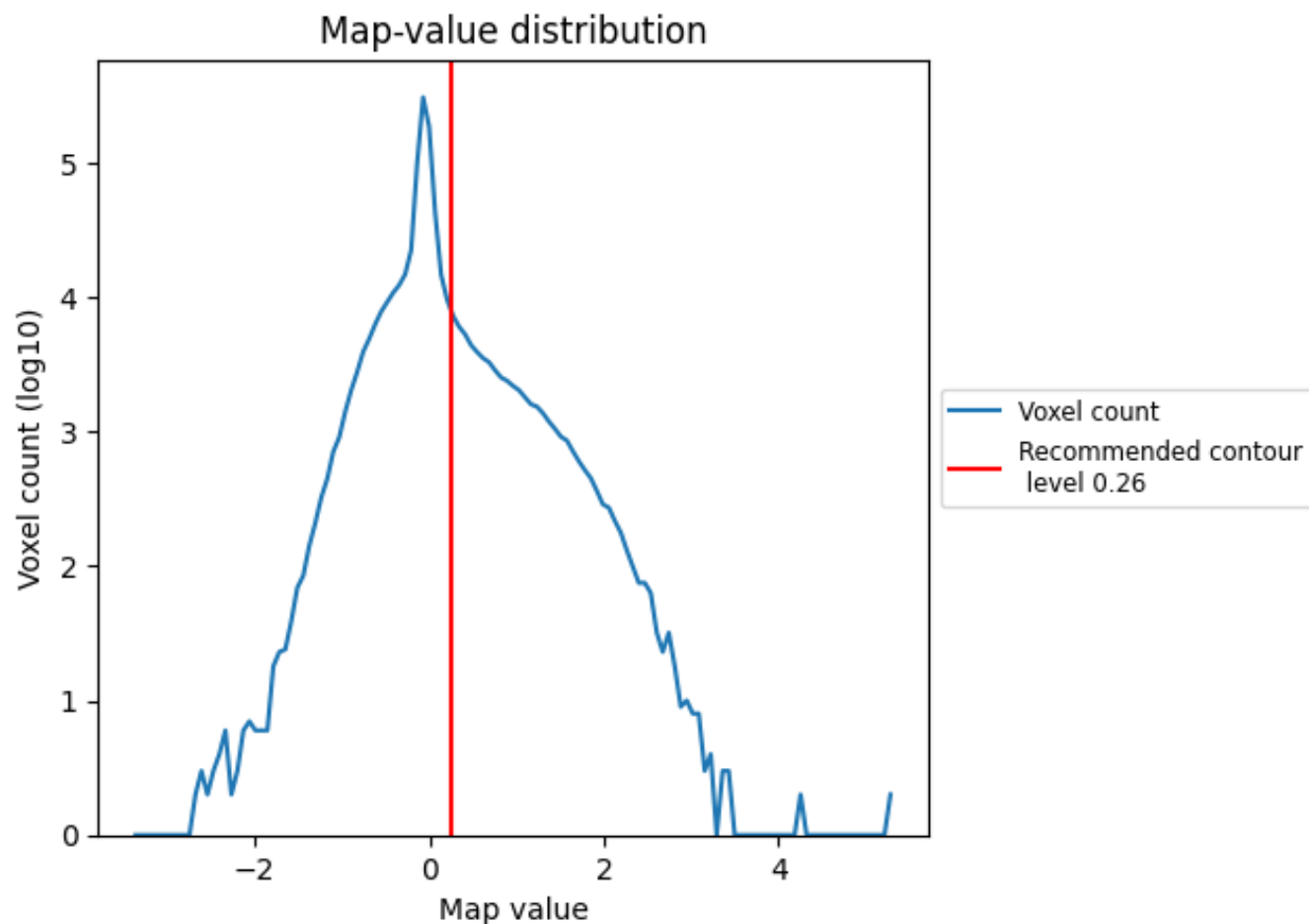
## 6.5 Mask visualisation

This section was not generated. No masks/segmentation were deposited.

## 7 Map analysis [i](#)

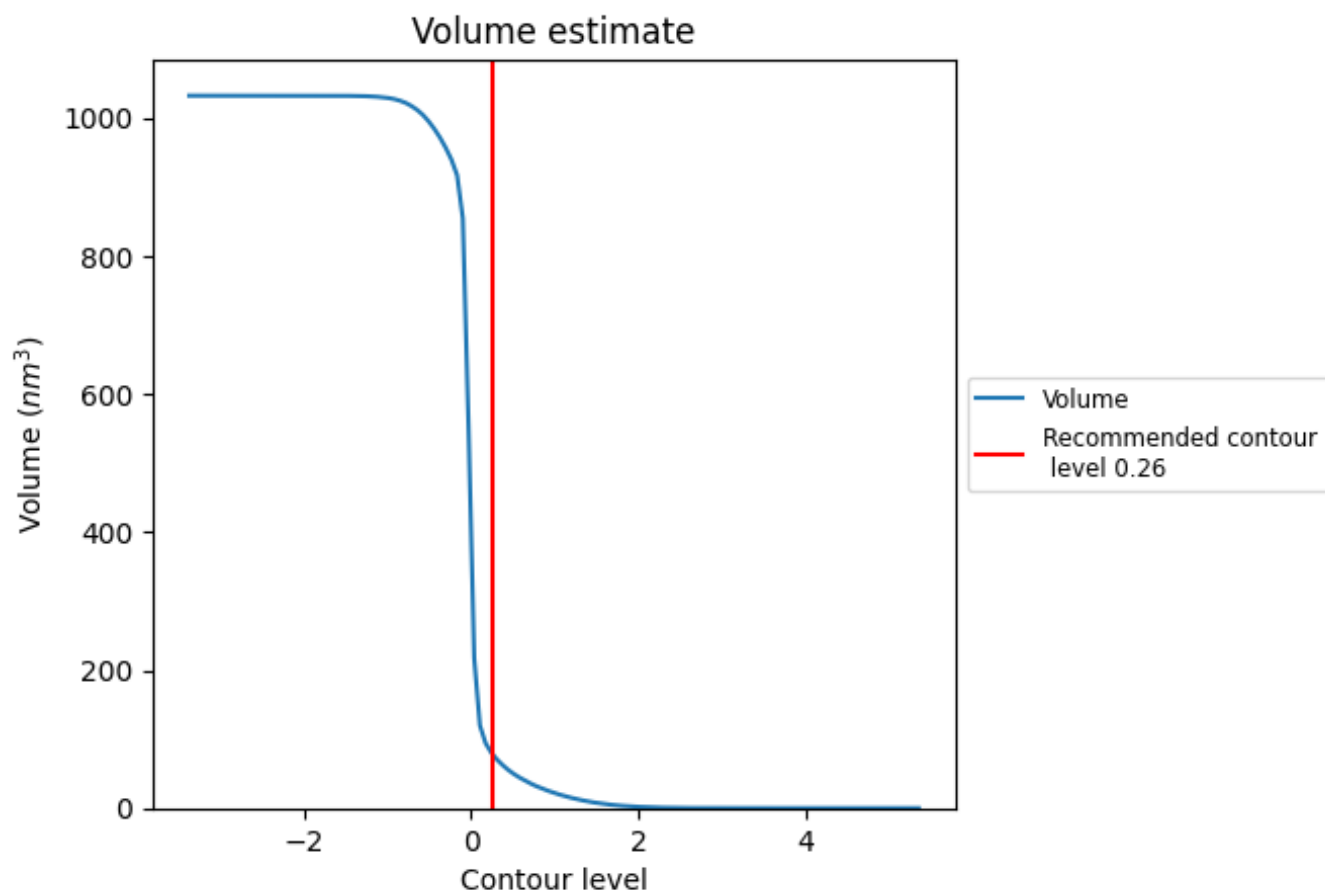
This section contains the results of statistical analysis of the map.

### 7.1 Map-value distribution [i](#)



The map-value distribution is plotted in 128 intervals along the x-axis. The y-axis is logarithmic. A spike in this graph at zero usually indicates that the volume has been masked.

## 7.2 Volume estimate [i](#)



The volume at the recommended contour level is 78 nm<sup>3</sup>; this corresponds to an approximate mass of 70 kDa.

The volume estimate graph shows how the enclosed volume varies with the contour level. The recommended contour level is shown as a vertical line and the intersection between the line and the curve gives the volume of the enclosed surface at the given level.

## 7.3 Rotationally averaged power spectrum [i](#)

This section was not generated. The rotationally averaged power spectrum is only generated for cubic maps.

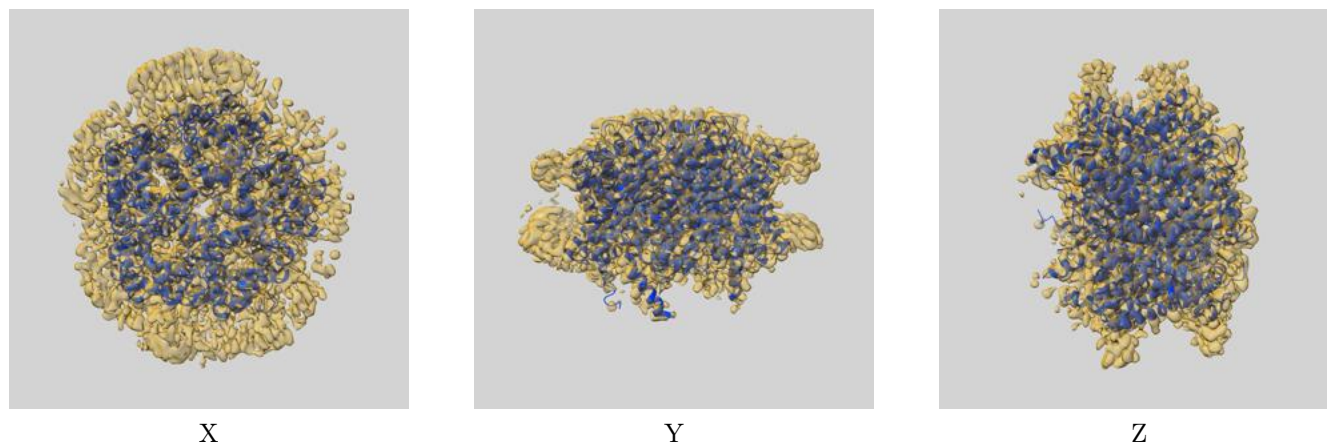
## 8 Fourier-Shell correlation ⓘ

This section was not generated. No FSC curve or half-maps provided.

## 9 Map-model fit [i](#)

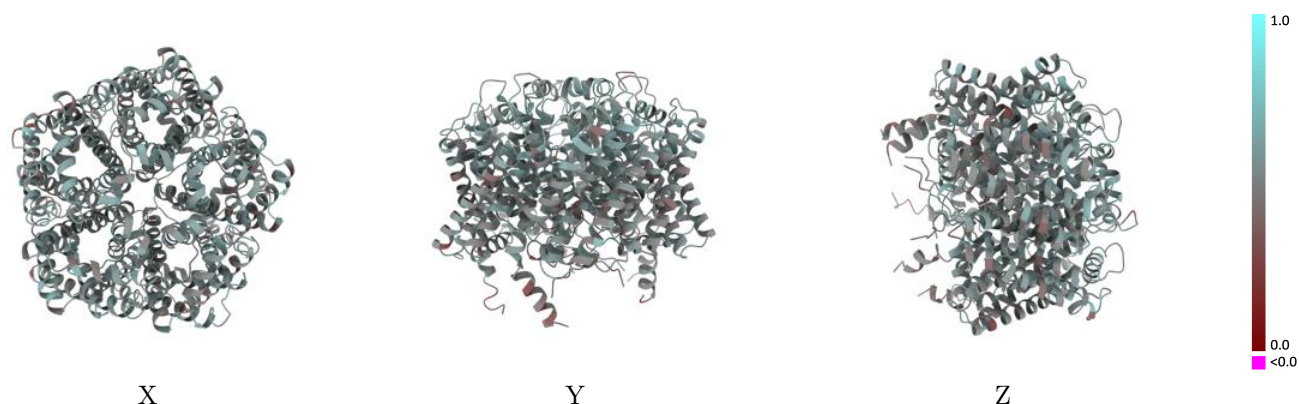
This section contains information regarding the fit between EMDB map EMD-21355 and PDB model 6VQR. Per-residue inclusion information can be found in [section 3](#) on [page 6](#).

### 9.1 Map-model overlay [i](#)



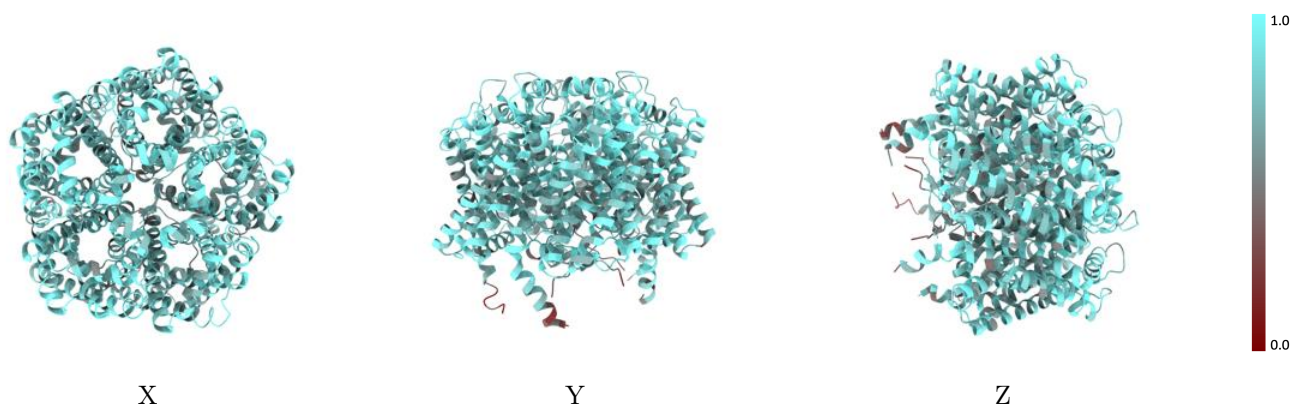
The images above show the 3D surface view of the map at the recommended contour level 0.26 at 50% transparency in yellow overlaid with a ribbon representation of the model coloured in blue. These images allow for the visual assessment of the quality of fit between the atomic model and the map.

## 9.2 Q-score mapped to coordinate model [i](#)



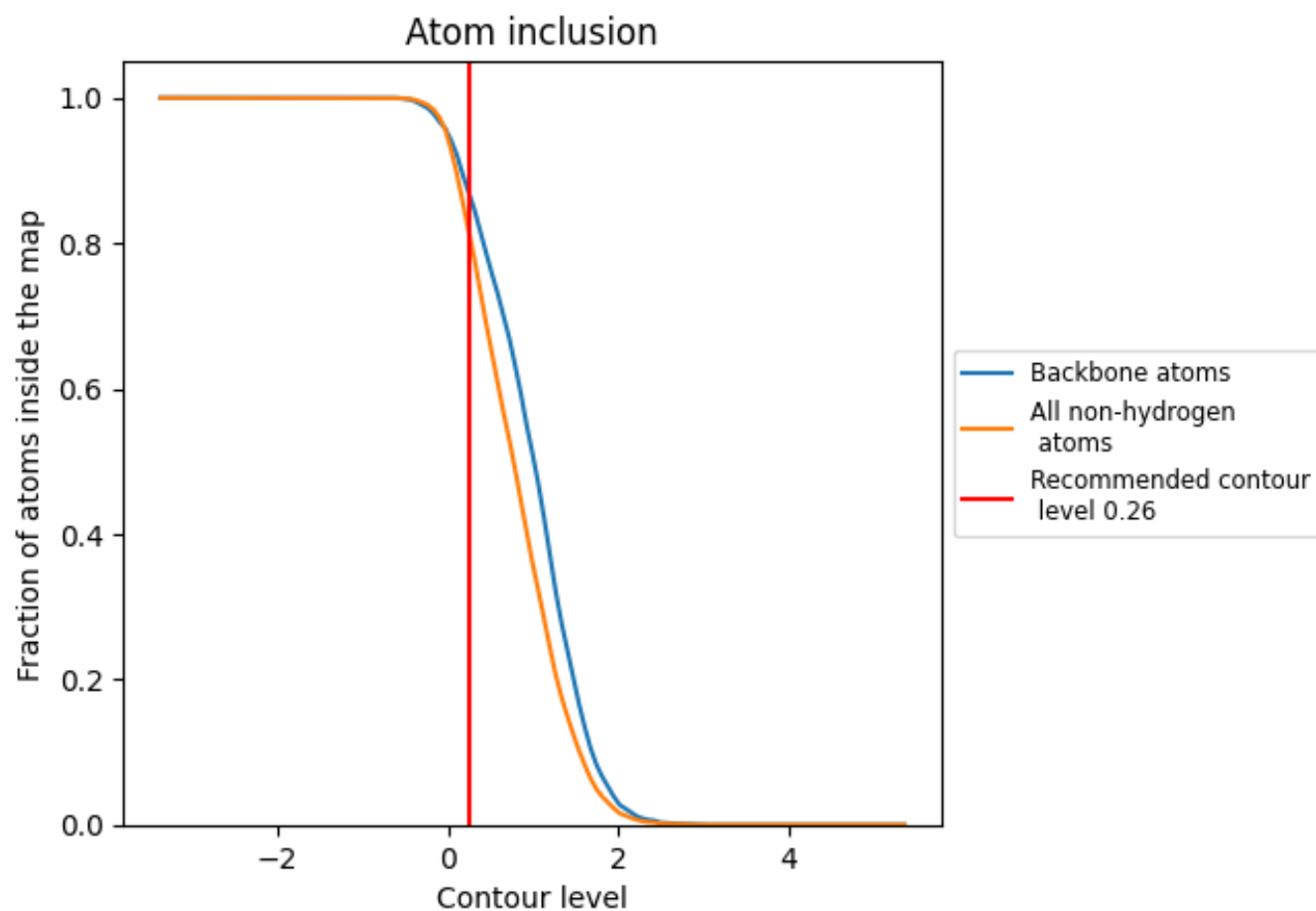
The images above show the model with each residue coloured according to its Q-score. This shows their resolvability in the map with higher Q-score values reflecting better resolvability. Please note: Q-score is calculating the resolvability of atoms, and thus high values are only expected at resolutions at which atoms can be resolved. Low Q-score values may therefore be expected for many entries.

## 9.3 Atom inclusion mapped to coordinate model [i](#)



The images above show the model with each residue coloured according to its atom inclusion. This shows to what extent they are inside the map at the recommended contour level (0.26).

## 9.4 Atom inclusion [i](#)



At the recommended contour level, 86% of all backbone atoms, 81% of all non-hydrogen atoms, are inside the map.

9.5 Map-model fit summary ⓘ

The table lists the average atom inclusion at the recommended contour level (0.26) and Q-score for the entire model and for each chain.

Chain	Atom inclusion	Q-score
All	<div><div></div></div> 0.8061	<div><div></div></div> 0.5220
A	<div><div></div></div> 0.8106	<div><div></div></div> 0.5230
B	<div><div></div></div> 0.8174	<div><div></div></div> 0.5250
C	<div><div></div></div> 0.8058	<div><div></div></div> 0.5230
D	<div><div></div></div> 0.8107	<div><div></div></div> 0.5210
E	<div><div></div></div> 0.7864	<div><div></div></div> 0.5170

