



Full wwPDB X-ray Structure Validation Report ⓘ

May 15, 2020 – 09:17 am BST

PDB ID : 2VR1
Title : Crystal structure of Biotin carboxylase from E. coli in complex with ATP analog, ADPCF2P.
Authors : Mochalkin, I.; Waldrop, G.L.
Deposited on : 2008-03-24
Resolution : 2.60 Å(reported)

This is a Full wwPDB X-ray Structure Validation Report for a publicly released PDB entry.

We welcome your comments at validation@mail.wwpdb.org

A user guide is available at

<https://www.wwpdb.org/validation/2017/XrayValidationReportHelp>

with specific help available everywhere you see the ⓘ symbol.

The following versions of software and data (see [references ⓘ](#)) were used in the production of this report:

MolProbity : 4.02b-467
Mogul : 1.8.5 (274361), CSD as541be (2020)
Xtriage (Phenix) : 1.13
EDS : 2.11
buster-report : 1.1.7 (2018)
Percentile statistics : 20191225.v01 (using entries in the PDB archive December 25th 2019)
Refmac : 5.8.0158
CCP4 : 7.0.044 (Gargrove)
Ideal geometry (proteins) : Engh & Huber (2001)
Ideal geometry (DNA, RNA) : Parkinson et al. (1996)
Validation Pipeline (wwPDB-VP) : 2.11

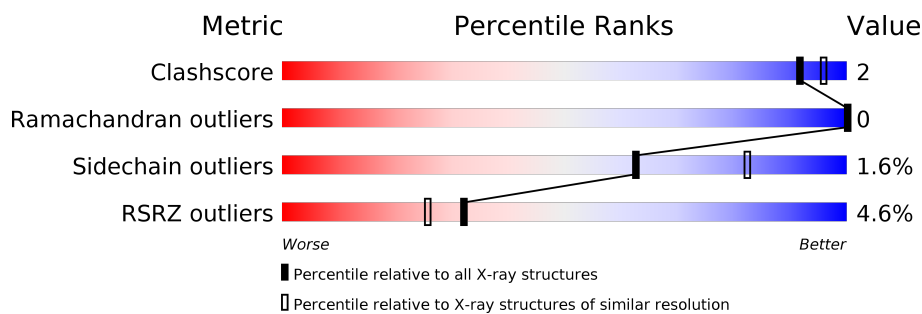
1 Overall quality at a glance

The following experimental techniques were used to determine the structure:

X-RAY DIFFRACTION

The reported resolution of this entry is 2.60 Å.

Percentile scores (ranging between 0-100) for global validation metrics of the entry are shown in the following graphic. The table shows the number of entries on which the scores are based.



Metric	Whole archive (#Entries)	Similar resolution (#Entries, resolution range(Å))
Clashscore	141614	3518 (2.60-2.60)
Ramachandran outliers	138981	3455 (2.60-2.60)
Sidechain outliers	138945	3455 (2.60-2.60)
RSRZ outliers	127900	3104 (2.60-2.60)

The table below summarises the geometric issues observed across the polymeric chains and their fit to the electron density. The red, orange, yellow and green segments on the lower bar indicate the fraction of residues that contain outliers for ≥ 3 , 2, 1 and 0 types of geometric quality criteria respectively. A grey segment represents the fraction of residues that are not modelled. The numeric value for each fraction is indicated below the corresponding segment, with a dot representing fractions $\leq 5\%$. The upper red bar (where present) indicates the fraction of residues that have poor fit to the electron density. The numeric value is given above the bar.

Mol	Chain	Length	Quality of chain
1	A	449	<div> <div>8%</div> <div>94%</div> <div>5%</div> </div>
1	B	449	<div> <div>8%</div> <div>90%</div> <div>6%</div> </div>

The following table lists non-polymeric compounds, carbohydrate monomers and non-standard residues in protein, DNA, RNA chains that are outliers for geometric or electron-density-fit criteria:

Mol	Type	Chain	Res	Chirality	Geometry	Clashes	Electron density
2	CL	B	1447	-	-	X	-

2 Entry composition [i](#)

There are 4 unique types of molecules in this entry. The entry contains 7027 atoms, of which 0 are hydrogens and 0 are deuteriums.

In the tables below, the ZeroOcc column contains the number of atoms modelled with zero occupancy, the AltConf column contains the number of residues with at least one atom in alternate conformation and the Trace column contains the number of residues modelled with at most 2 atoms.

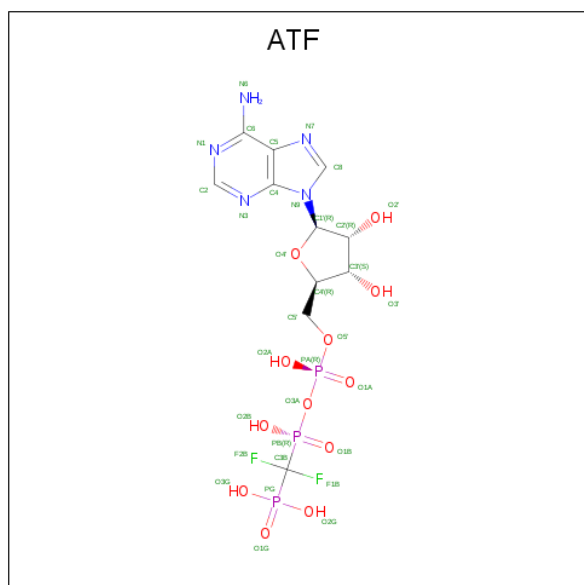
- Molecule 1 is a protein called BIOTIN CARBOXYLASE.

Mol	Chain	Residues	Atoms					ZeroOcc	AltConf	Trace
1	A	444	Total	C	N	O	S	0	4	0
			3425	2159	611	633	22			
1	B	430	Total	C	N	O	S	0	1	0
			3334	2105	592	617	20			

- Molecule 2 is CHLORIDE ION (three-letter code: CL) (formula: Cl).

Mol	Chain	Residues	Atoms		ZeroOcc	AltConf
2	B	1	Total	Cl	0	0
			1	1		
2	A	1	Total	Cl	0	0
			1	1		

- Molecule 3 is PHOSPHODIFLUOROMETHYLPHOSPHONIC ACID-ADENYLATE ESTER (three-letter code: ATF) (formula: $C_{11}H_{16}F_2N_5O_{12}P_3$).



Mol	Chain	Residues	Atoms						ZeroOcc	AltConf
3	A	1	Total	C	F	N	O	P	0	0
			33	11	2	5	12	3		

- Molecule 4 is water.

Mol	Chain	Residues	Atoms		ZeroOcc	AltConf
4	A	122	Total	O	0	0
			122	122		
4	B	111	Total	O	0	0
			111	111		

3 Residue-property plots [i](#)

These plots are drawn for all protein, RNA and DNA chains in the entry. The first graphic for a chain summarises the proportions of the various outlier classes displayed in the second graphic. The second graphic shows the sequence view annotated by issues in geometry and electron density. Residues are color-coded according to the number of geometric quality criteria for which they contain at least one outlier: green = 0, yellow = 1, orange = 2 and red = 3 or more. A red dot above a residue indicates a poor fit to the electron density ($RSRZ > 2$). Stretches of 2 or more consecutive residues without any outlier are shown as a green connector. Residues present in the sample, but not in the model, are shown in grey.

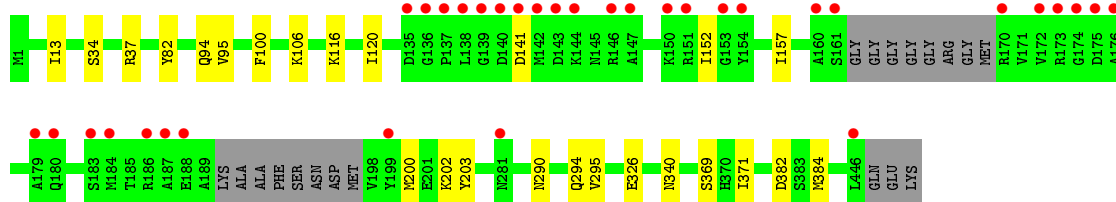
• Molecule 1: BIOTIN CARBOXYLASE

Chain A: 



• Molecule 1: BIOTIN CARBOXYLASE

Chain B: 



4 Data and refinement statistics

Property	Value	Source
Space group	P 21 21 21	Depositor
Cell constants a, b, c, α , β , γ	84.13Å 106.78Å 121.91Å 90.00° 90.00° 90.00°	Depositor
Resolution (Å)	20.00 – 2.60 14.99 – 2.60	Depositor EDS
% Data completeness (in resolution range)	95.5 (20.00-2.60) 91.8 (14.99-2.60)	Depositor EDS
R_{merge}	0.10	Depositor
R_{sym}	(Not available)	Depositor
$\langle I/\sigma(I) \rangle$ ¹	3.21 (at 2.61Å)	Xtriage
Refinement program	REFMAC 5.2.0005	Depositor
R, R_{free}	0.189 , 0.247 0.191 , (Not available)	Depositor DCC
R_{free} test set	No test flags present.	wwPDB-VP
Wilson B-factor (Å ²)	38.2	Xtriage
Anisotropy	0.350	Xtriage
Bulk solvent k_{sol} (e/Å ³), B_{sol} (Å ²)	0.33 , 33.9	EDS
L-test for twinning ²	$\langle L \rangle = 0.48$, $\langle L^2 \rangle = 0.31$	Xtriage
Estimated twinning fraction	No twinning to report.	Xtriage
F_o, F_c correlation	0.94	EDS
Total number of atoms	7027	wwPDB-VP
Average B, all atoms (Å ²)	41.0	wwPDB-VP

Xtriage's analysis on translational NCS is as follows: *The largest off-origin peak in the Patterson function is 3.98% of the height of the origin peak. No significant pseudotranslation is detected.*

¹Intensities estimated from amplitudes.

²Theoretical values of $\langle |L| \rangle$, $\langle L^2 \rangle$ for acentric reflections are 0.5, 0.333 respectively for untwinned datasets, and 0.375, 0.2 for perfectly twinned datasets.

5 Model quality

5.1 Standard geometry

Bond lengths and bond angles in the following residue types are not validated in this section: ATF, CL

The Z score for a bond length (or angle) is the number of standard deviations the observed value is removed from the expected value. A bond length (or angle) with $|Z| > 5$ is considered an outlier worth inspection. RMSZ is the root-mean-square of all Z scores of the bond lengths (or angles).

Mol	Chain	Bond lengths		Bond angles	
		RMSZ	$\# Z > 5$	RMSZ	$\# Z > 5$
1	A	0.44	0/3487	0.57	0/4705
1	B	0.44	0/3398	0.57	0/4588
All	All	0.44	0/6885	0.57	0/9293

There are no bond length outliers.

There are no bond angle outliers.

There are no chirality outliers.

There are no planarity outliers.

5.2 Too-close contacts

In the following table, the Non-H and H(model) columns list the number of non-hydrogen atoms and hydrogen atoms in the chain respectively. The H(added) column lists the number of hydrogen atoms added and optimized by MolProbity. The Clashes column lists the number of clashes within the asymmetric unit, whereas Symm-Clashes lists symmetry related clashes.

Mol	Chain	Non-H	H(model)	H(added)	Clashes	Symm-Clashes
1	A	3425	0	3444	10	0
1	B	3334	0	3361	11	0
2	A	1	0	0	1	0
2	B	1	0	0	2	0
3	A	33	0	12	0	0
4	A	122	0	0	1	0
4	B	111	0	0	1	0
All	All	7027	0	6817	22	0

The all-atom clashscore is defined as the number of clashes found per 1000 atoms (including hydrogen atoms). The all-atom clashscore for this structure is 2.

All (22) close contacts within the same asymmetric unit are listed below, sorted by their clash magnitude.

Atom-1	Atom-2	Interatomic distance (Å)	Clash overlap (Å)
1:B:295:VAL:HG23	2:B:1447:CL:CL	2.34	0.64
1:A:309:ILE:HA	1:A:312:GLN:HE21	1.63	0.63
2:B:1447:CL:CL	4:B:2060:HOH:O	2.53	0.61
1:A:79:HIS:HD1	1:A:81:GLY:H	1.49	0.57
1:B:340:ASN:HD22	1:B:384:MET:HA	1.69	0.56
1:A:340:ASN:HD22	1:A:384:MET:HA	1.74	0.53
1:B:290:ASN:ND2	1:B:294:GLN:NE2	2.58	0.50
1:A:298:PRO:O	1:A:302:MET:HG2	2.12	0.50
1:A:167:ARG:HD3	1:A:236:HIS:CD2	2.48	0.49
1:B:290:ASN:HD22	1:B:294:GLN:NE2	2.11	0.48
1:B:157:ILE:HG23	1:B:203:TYR:HB2	1.95	0.48
1:B:369:SER:OG	1:B:371:ILE:HG12	2.15	0.47
1:A:297:HIS:N	1:A:298:PRO:CD	2.78	0.47
1:A:295:VAL:HG23	2:A:1447:CL:CL	2.53	0.46
1:A:274:THR:HG21	1:A:294:GLN:NE2	2.30	0.46
1:B:116:LYS:O	1:B:120:ILE:HG12	2.16	0.46
1:A:259:ARG:NE	4:A:2075:HOH:O	2.46	0.44
1:B:152:ILE:HG23	1:B:202:LYS:HB2	1.99	0.43
1:B:95:VAL:HG13	1:B:100:PHE:HB2	2.01	0.43
1:A:63:ILE:HB	1:A:64:PRO:HD3	2.01	0.42
1:B:34:SER:O	1:B:37:ARG:HG3	2.20	0.41
1:B:13:ILE:HB	1:B:82:TYR:CE2	2.57	0.40

There are no symmetry-related clashes.

5.3 Torsion angles [i](#)

5.3.1 Protein backbone [i](#)

In the following table, the Percentiles column shows the percent Ramachandran outliers of the chain as a percentile score with respect to all X-ray entries followed by that with respect to entries of similar resolution.

The Analysed column shows the number of residues for which the backbone conformation was analysed, and the total number of residues.

Mol	Chain	Analysed	Favoured	Allowed	Outliers	Percentiles	
1	A	440/449 (98%)	426 (97%)	14 (3%)	0	100	100
1	B	425/449 (95%)	409 (96%)	16 (4%)	0	100	100

Continued on next page...

Continued from previous page...

Mol	Chain	Analysed	Favoured	Allowed	Outliers	Percentiles	
All	All	865/898 (96%)	835 (96%)	30 (4%)	0	100	100

There are no Ramachandran outliers to report.

5.3.2 Protein sidechains ⓘ

In the following table, the Percentiles column shows the percent sidechain outliers of the chain as a percentile score with respect to all X-ray entries followed by that with respect to entries of similar resolution.

The Analysed column shows the number of residues for which the sidechain conformation was analysed, and the total number of residues.

Mol	Chain	Analysed	Rotameric	Outliers	Percentiles	
1	A	358/361 (99%)	353 (99%)	5 (1%)	67	85
1	B	351/361 (97%)	345 (98%)	6 (2%)	60	81
All	All	709/722 (98%)	698 (98%)	11 (2%)	62	82

All (11) residues with a non-rotameric sidechain are listed below:

Mol	Chain	Res	Type
1	A	18	LEU
1	A	97	ARG
1	A	193	PHE
1	A	237	GLN
1	A	326	GLU
1	B	94	GLN
1	B	106	LYS
1	B	141	ASP
1	B	200	MET
1	B	326	GLU
1	B	382	ASP

Some sidechains can be flipped to improve hydrogen bonding and reduce clashes. All (13) such sidechains are listed below:

Mol	Chain	Res	Type
1	A	206	ASN
1	A	236	HIS
1	A	290	ASN
1	A	294	GLN

Continued on next page...

Continued from previous page...

Mol	Chain	Res	Type
1	A	312	GLN
1	A	340	ASN
1	B	94	GLN
1	B	145	ASN
1	B	237	GLN
1	B	290	ASN
1	B	319	GLN
1	B	340	ASN
1	B	404	ASN

5.3.3 RNA [i](#)

There are no RNA molecules in this entry.

5.4 Non-standard residues in protein, DNA, RNA chains [i](#)

There are no non-standard protein/DNA/RNA residues in this entry.

5.5 Carbohydrates [i](#)

There are no carbohydrates in this entry.

5.6 Ligand geometry [i](#)

Of 3 ligands modelled in this entry, 2 are monoatomic - leaving 1 for Mogul analysis.

In the following table, the Counts columns list the number of bonds (or angles) for which Mogul statistics could be retrieved, the number of bonds (or angles) that are observed in the model and the number of bonds (or angles) that are defined in the Chemical Component Dictionary. The Link column lists molecule types, if any, to which the group is linked. The Z score for a bond length (or angle) is the number of standard deviations the observed value is removed from the expected value. A bond length (or angle) with $|Z| > 2$ is considered an outlier worth inspection. RMSZ is the root-mean-square of all Z scores of the bond lengths (or angles).

Mol	Type	Chain	Res	Link	Bond lengths			Bond angles		
					Counts	RMSZ	$\# Z > 2$	Counts	RMSZ	$\# Z > 2$
3	ATF	A	1448	-	27,35,35	1.19	3 (11%)	28,57,57	1.68	5 (17%)

In the following table, the Chirals column lists the number of chiral outliers, the number of chiral centers analysed, the number of these observed in the model and the number defined in the

Chemical Component Dictionary. Similar counts are reported in the Torsion and Rings columns. '-' means no outliers of that kind were identified.

Mol	Type	Chain	Res	Link	Chirals	Torsions	Rings
3	ATF	A	1448	-	-	0/13/50/50	0/3/3/3

All (3) bond length outliers are listed below:

Mol	Chain	Res	Type	Atoms	Z	Observed(Å)	Ideal(Å)
3	A	1448	ATF	C5-C4	2.43	1.47	1.40
3	A	1448	ATF	PB-O2B	-2.31	1.51	1.56
3	A	1448	ATF	PB-O3A	2.26	1.60	1.58

All (5) bond angle outliers are listed below:

Mol	Chain	Res	Type	Atoms	Z	Observed(°)	Ideal(°)
3	A	1448	ATF	PA-O3A-PB	-4.39	119.15	132.41
3	A	1448	ATF	C3'-C2'-C1'	3.74	106.60	100.98
3	A	1448	ATF	N3-C2-N1	-3.31	123.50	128.68
3	A	1448	ATF	C4-C5-N7	-3.01	106.26	109.40
3	A	1448	ATF	O2B-PB-O1B	2.64	117.72	111.34

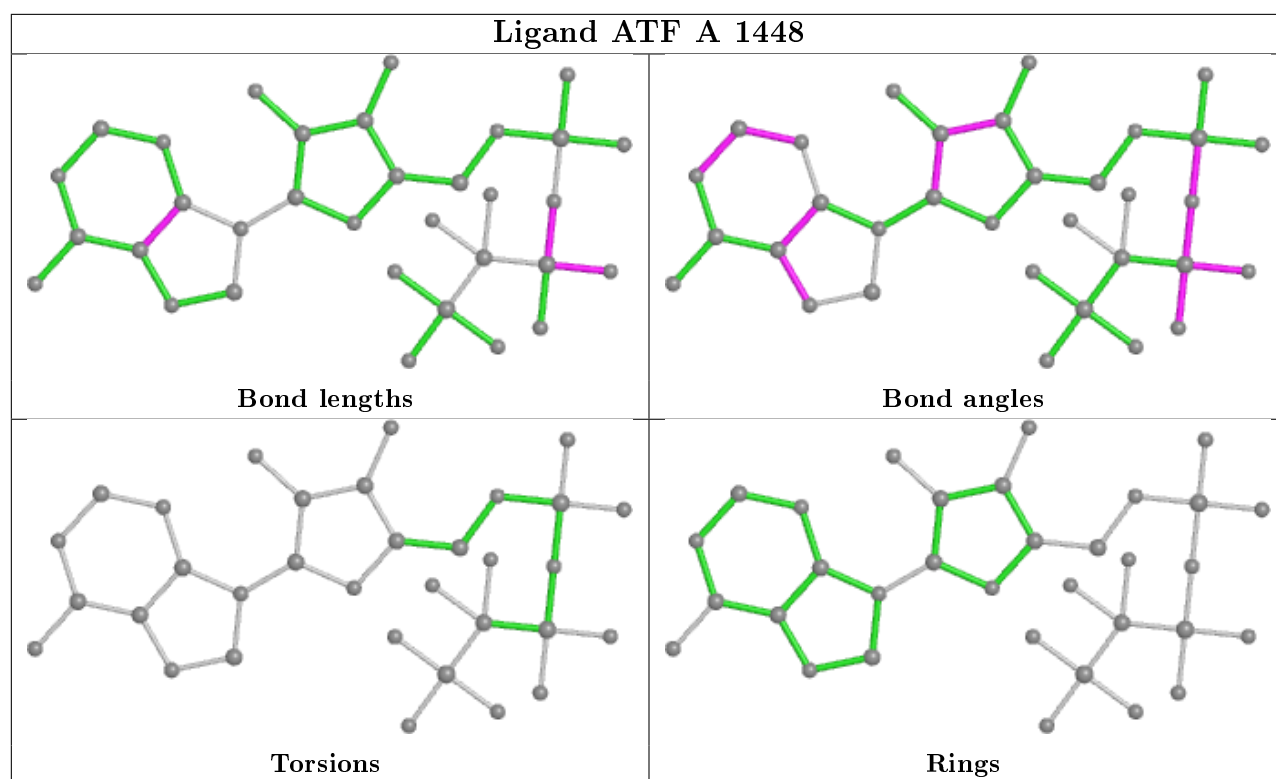
There are no chirality outliers.

There are no torsion outliers.

There are no ring outliers.

No monomer is involved in short contacts.

The following is a two-dimensional graphical depiction of Mogul quality analysis of bond lengths, bond angles, torsion angles, and ring geometry for all instances of the Ligand of Interest. In addition, ligands with molecular weight > 250 and outliers as shown on the validation Tables will also be included. For torsion angles, if less than 5% of the Mogul distribution of torsion angles is within 10 degrees of the torsion angle in question, then that torsion angle is considered an outlier. Any bond that is central to one or more torsion angles identified as an outlier by Mogul will be highlighted in the graph. For rings, the root-mean-square deviation (RMSD) between the ring in question and similar rings identified by Mogul is calculated over all ring torsion angles. If the average RMSD is greater than 60 degrees and the minimal RMSD between the ring in question and any Mogul-identified rings is also greater than 60 degrees, then that ring is considered an outlier. The outliers are highlighted in purple. The color gray indicates Mogul did not find sufficient equivalents in the CSD to analyse the geometry.



5.7 Other polymers [i](#)

There are no such residues in this entry.

5.8 Polymer linkage issues [i](#)

There are no chain breaks in this entry.

6 Fit of model and data

6.1 Protein, DNA and RNA chains

In the following table, the column labelled ‘#RSRZ> 2’ contains the number (and percentage) of RSRZ outliers, followed by percent RSRZ outliers for the chain as percentile scores relative to all X-ray entries and entries of similar resolution. The OWAB column contains the minimum, median, 95th percentile and maximum values of the occupancy-weighted average B-factor per residue. The column labelled ‘Q< 0.9’ lists the number of (and percentage) of residues with an average occupancy less than 0.9.

Mol	Chain	Analysed	<RSRZ>	#RSRZ>2	OWAB(Å ²)	Q<0.9
1	A	444/449 (98%)	-0.50	6 (1%) 75 71	31, 38, 48, 63	3 (0%)
1	B	430/449 (95%)	-0.10	34 (7%) 12 9	31, 38, 83, 103	0
All	All	874/898 (97%)	-0.30	40 (4%) 32 26	31, 38, 69, 103	3 (0%)

All (40) RSRZ outliers are listed below:

Mol	Chain	Res	Type	RSRZ
1	B	187	ALA	11.2
1	B	176	ALA	9.5
1	B	143	ASP	8.0
1	B	180	GLN	7.5
1	B	139	GLY	7.3
1	B	161	SER	7.3
1	B	175	ASP	7.2
1	B	179	ALA	6.0
1	B	154	TYR	5.6
1	B	170	ARG	5.5
1	B	147	ALA	4.8
1	B	146	ARG	4.8
1	B	183	SER	4.3
1	A	163	GLY	4.2
1	B	151	ARG	3.5
1	B	142	MET	3.5
1	B	144	LYS	3.3
1	B	150	LYS	3.2
1	B	137	PRO	3.1
1	B	160	ALA	3.1
1	B	173	ARG	3.1
1	B	136	GLY	3.0
1	B	140	ASP	2.9
1	B	174	GLY	2.9

Continued on next page...

Continued from previous page...

Mol	Chain	Res	Type	RSRZ
1	B	138	LEU	2.8
1	A	446	LEU	2.7
1	A	166	GLY	2.6
1	B	184	MET	2.6
1	B	446	LEU	2.5
1	B	135	ASP	2.4
1	B	186	ARG	2.3
1	B	199	TYR	2.3
1	B	188	GLU	2.3
1	A	167	ARG	2.1
1	A	180	GLN	2.1
1	B	141	ASP	2.1
1	B	281	ASN	2.0
1	B	172	VAL	2.0
1	A	445	GLY	2.0
1	B	153	GLY	2.0

6.2 Non-standard residues in protein, DNA, RNA chains [i](#)

There are no non-standard protein/DNA/RNA residues in this entry.

6.3 Carbohydrates [i](#)

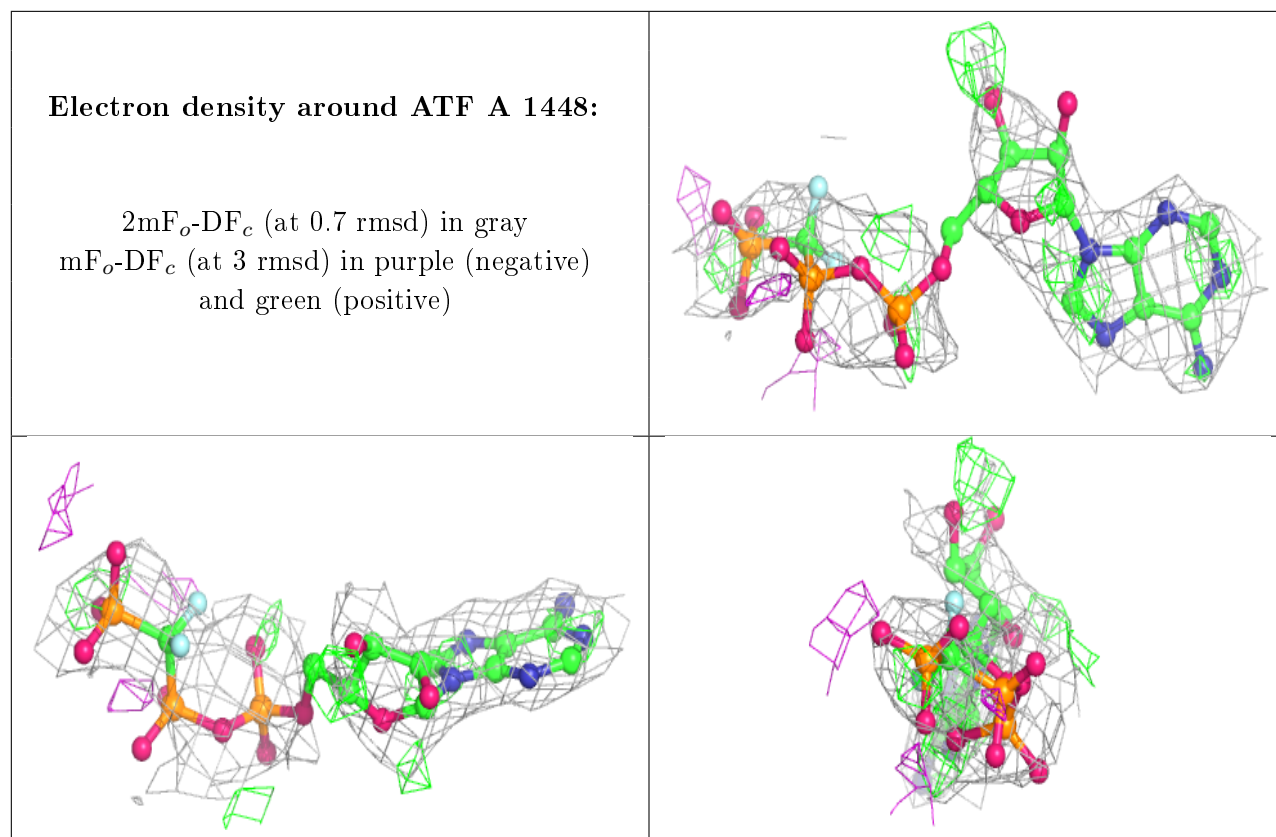
There are no carbohydrates in this entry.

6.4 Ligands [i](#)

In the following table, the Atoms column lists the number of modelled atoms in the group and the number defined in the chemical component dictionary. The B-factors column lists the minimum, median, 95th percentile and maximum values of B factors of atoms in the group. The column labelled 'Q< 0.9' lists the number of atoms with occupancy less than 0.9.

Mol	Type	Chain	Res	Atoms	RSCC	RSR	B-factors(\AA^2)	Q<0.9
3	ATF	A	1448	33/33	0.69	0.34	69,70,73,74	33
2	CL	A	1447	1/1	0.94	0.18	52,52,52,52	0
2	CL	B	1447	1/1	0.98	0.11	52,52,52,52	0

The following is a graphical depiction of the model fit to experimental electron density of all instances of the Ligand of Interest. In addition, ligands with molecular weight > 250 and outliers as shown on the geometry validation Tables will also be included. Each fit is shown from different orientation to approximate a three-dimensional view.



6.5 Other polymers [i](#)

There are no such residues in this entry.