



# Full wwPDB X-ray Structure Validation Report ⓘ

May 23, 2020 – 06:04 pm BST

PDB ID : 2VRJ  
Title : Beta-glucosidase from *Thermotoga maritima* in complex with N-octyl-5- deoxy-6-oxa-N-(thio)carbamoylecystine  
Authors : Aguilar, M.; Gloster, T.M.; Garcia-Moreno, M.I.; Ortiz Mellet, C.; Davies, G.J.; Llebaria, A.; Casas, J.; Egido-Gabas, M.; Garcia Fernandez, J.M.  
Deposited on : 2008-04-09  
Resolution : 1.90 Å(reported)

This is a Full wwPDB X-ray Structure Validation Report for a publicly released PDB entry.

We welcome your comments at [validation@mail.wwpdb.org](mailto:validation@mail.wwpdb.org)

A user guide is available at

<https://www.wwpdb.org/validation/2017/XrayValidationReportHelp>

with specific help available everywhere you see the ⓘ symbol.

---

The following versions of software and data (see [references ⓘ](#)) were used in the production of this report:

MolProbity : 4.02b-467  
Mogul : 1.8.5 (274361), CSD as541be (2020)  
Xtriage (Phenix) : 1.13  
EDS : 2.11  
buster-report : 1.1.7 (2018)  
Percentile statistics : 20191225.v01 (using entries in the PDB archive December 25th 2019)  
Refmac : 5.8.0158  
CCP4 : 7.0.044 (Gargrove)  
Ideal geometry (proteins) : Engh & Huber (2001)  
Ideal geometry (DNA, RNA) : Parkinson et al. (1996)  
Validation Pipeline (wwPDB-VP) : 2.11

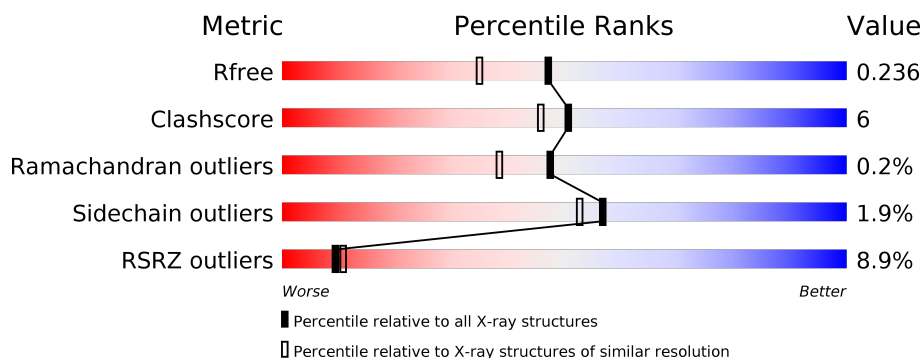
# 1 Overall quality at a glance

The following experimental techniques were used to determine the structure:

## *X-RAY DIFFRACTION*

The reported resolution of this entry is 1.90 Å.

Percentile scores (ranging between 0-100) for global validation metrics of the entry are shown in the following graphic. The table shows the number of entries on which the scores are based.



Metric	Whole archive (#Entries)	Similar resolution (#Entries, resolution range(Å))
$R_{free}$	130704	6207 (1.90-1.90)
Clashscore	141614	6847 (1.90-1.90)
Ramachandran outliers	138981	6760 (1.90-1.90)
Sidechain outliers	138945	6760 (1.90-1.90)
RSRZ outliers	127900	6082 (1.90-1.90)

The table below summarises the geometric issues observed across the polymeric chains and their fit to the electron density. The red, orange, yellow and green segments on the lower bar indicate the fraction of residues that contain outliers for  $\geq 3$ , 2, 1 and 0 types of geometric quality criteria respectively. A grey segment represents the fraction of residues that are not modelled. The numeric value for each fraction is indicated below the corresponding segment, with a dot representing fractions  $\leq 5\%$ . The upper red bar (where present) indicates the fraction of residues that have poor fit to the electron density. The numeric value is given above the bar.

Mol	Chain	Length	Quality of chain
1	A	468	<div> <div>4%</div> <div> <div></div> <div>85%</div> <div>8%</div> <div>6%</div> </div> </div>
1	B	468	<div> <div>13%</div> <div> <div></div> <div>81%</div> <div>13%</div> <div>5%</div> </div> </div>

The following table lists non-polymeric compounds, carbohydrate monomers and non-standard residues in protein, DNA, RNA chains that are outliers for geometric or electron-density-fit criteria:

Mol	Type	Chain	Res	Chirality	Geometry	Clashes	Electron density
2	NCW	A	1446[A]	-	-	X	-
4	ACT	B	1448	-	-	X	-

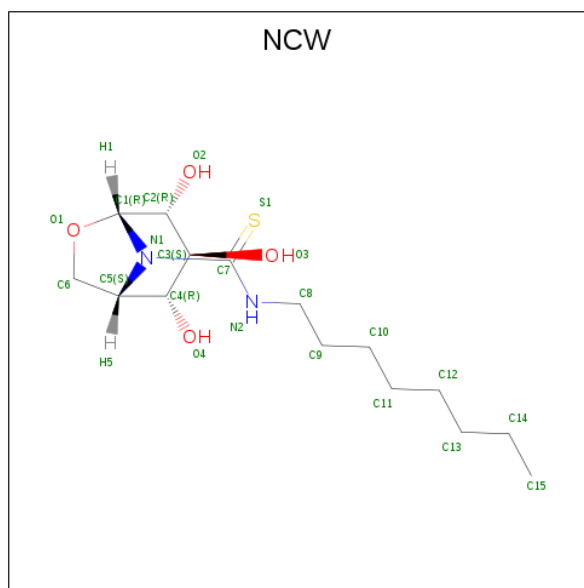


In the tables below, the ZeroOcc column contains the number of atoms modelled with zero occupancy, the AltConf column contains the number of residues with at least one atom in alternate conformation and the Trace column contains the number of residues modelled with at most 2 atoms.

- Molecule 1 is a protein called BETA-GLUCOSIDASE A.

Mol	Chain	Residues	Atoms					ZeroOcc	AltConf	Trace
1	A	438	Total 3720	C 2424	N 628	O 661	S 7	0	22	0
1	B	443	Total 3608	C 2342	N 595	O 664	S 7	0	10	0

- Molecule 2 is (1S,2R,3S,4R,5R)-2,3,4-trihydroxy-N-octyl-6-oxa-8-azabicyclo[3.2.1]octane-8-carbothioamide (three-letter code: NCW) (formula: C<sub>15</sub>H<sub>28</sub>N<sub>2</sub>O<sub>4</sub>S).



Mol	Chain	Residues	Atoms					ZeroOcc	AltConf
2	A	1	Total 30	C 23	N 2	O 4	S 1	0	1
2	B	1	Total 25	C 18	N 2	O 4	S 1	0	1

- Molecule 3 is CALCIUM ION (three-letter code: CA) (formula: Ca).

Mol	Chain	Residues	Atoms	ZeroOcc	AltConf
3	B	1	Total Ca 1 1	0	0
3	A	1	Total Ca 1 1	0	0

- Molecule 4 is ACETATE ION (three-letter code: ACT) (formula:  $C_2H_3O_2$ ).



Mol	Chain	Residues	Atoms	ZeroOcc	AltConf
4	A	1	Total C O 8 4 4	0	1
4	A	1	Total C O 4 2 2	0	0
4	B	1	Total C O 4 2 2	0	0

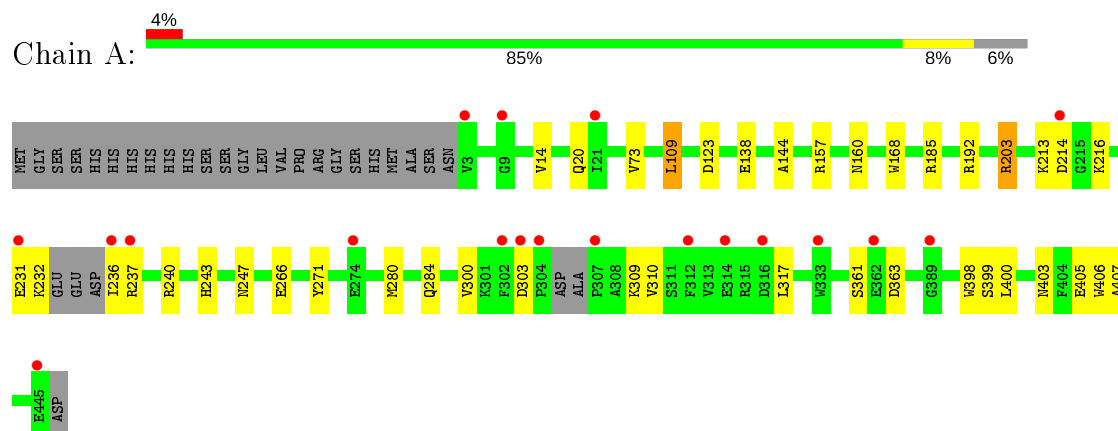
- Molecule 5 is water.

Mol	Chain	Residues	Atoms	ZeroOcc	AltConf
5	A	410	Total O 410 410	0	6
5	B	259	Total O 259 259	0	12

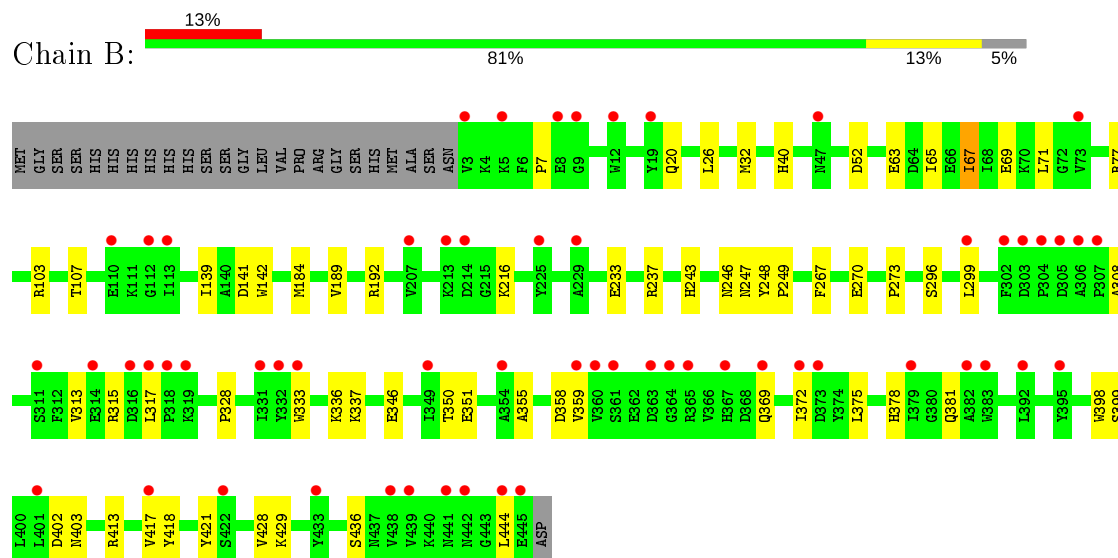
### 3 Residue-property plots [i](#)

These plots are drawn for all protein, RNA and DNA chains in the entry. The first graphic for a chain summarises the proportions of the various outlier classes displayed in the second graphic. The second graphic shows the sequence view annotated by issues in geometry and electron density. Residues are color-coded according to the number of geometric quality criteria for which they contain at least one outlier: green = 0, yellow = 1, orange = 2 and red = 3 or more. A red dot above a residue indicates a poor fit to the electron density ( $RSRZ > 2$ ). Stretches of 2 or more consecutive residues without any outlier are shown as a green connector. Residues present in the sample, but not in the model, are shown in grey.

#### • Molecule 1: BETA-GLUCOSIDASE A



#### • Molecule 1: BETA-GLUCOSIDASE A



## 4 Data and refinement statistics

Property	Value	Source
Space group	P 21 21 21	Depositor
Cell constants a, b, c, $\alpha$ , $\beta$ , $\gamma$	93.70Å 94.41Å 113.03Å 90.00° 90.00° 90.00°	Depositor
Resolution (Å)	72.55 – 1.90 19.92 – 1.90	Depositor EDS
% Data completeness (in resolution range)	99.7 (72.55-1.90) 99.7 (19.92-1.90)	Depositor EDS
$R_{merge}$	0.06	Depositor
$R_{sym}$	(Not available)	Depositor
$\langle I/\sigma(I) \rangle$ <sup>1</sup>	4.14 (at 1.90Å)	Xtriage
Refinement program	REFMAC 5.4.0065	Depositor
R, $R_{free}$	0.195 , 0.239 0.195 , 0.236	Depositor DCC
$R_{free}$ test set	3981 reflections (5.01%)	wwPDB-VP
Wilson B-factor (Å <sup>2</sup> )	32.5	Xtriage
Anisotropy	0.020	Xtriage
Bulk solvent $k_{sol}$ (e/Å <sup>3</sup> ), $B_{sol}$ (Å <sup>2</sup> )	0.37 , 67.0	EDS
L-test for twinning <sup>2</sup>	$\langle  L  \rangle = 0.50$ , $\langle L^2 \rangle = 0.33$	Xtriage
Estimated twinning fraction	0.013 for k,h,-l	Xtriage
$F_o, F_c$ correlation	0.96	EDS
Total number of atoms	8070	wwPDB-VP
Average B, all atoms (Å <sup>2</sup> )	37.0	wwPDB-VP

Xtriage's analysis on translational NCS is as follows: *The largest off-origin peak in the Patterson function is 3.50% of the height of the origin peak. No significant pseudotranslation is detected.*

<sup>1</sup>Intensities estimated from amplitudes.

<sup>2</sup>Theoretical values of  $\langle |L| \rangle$ ,  $\langle L^2 \rangle$  for acentric reflections are 0.5, 0.333 respectively for untwinned datasets, and 0.375, 0.2 for perfectly twinned datasets.

## 5 Model quality [i](#)

### 5.1 Standard geometry [i](#)

Bond lengths and bond angles in the following residue types are not validated in this section: CA, ACT, NCW

The Z score for a bond length (or angle) is the number of standard deviations the observed value is removed from the expected value. A bond length (or angle) with  $|Z| > 5$  is considered an outlier worth inspection. RMSZ is the root-mean-square of all Z scores of the bond lengths (or angles).

Mol	Chain	Bond lengths		Bond angles	
		RMSZ	# Z  >5	RMSZ	# Z  >5
1	A	0.74	0/3891	0.71	1/5277 (0.0%)
1	B	0.62	0/3751	0.62	0/5108
All	All	0.68	0/7642	0.67	1/10385 (0.0%)

There are no bond length outliers.

All (1) bond angle outliers are listed below:

Mol	Chain	Res	Type	Atoms	Z	Observed(°)	Ideal(°)
1	A	123	ASP	CB-CG-OD1	6.59	124.24	118.30

There are no chirality outliers.

There are no planarity outliers.

### 5.2 Too-close contacts [i](#)

In the following table, the Non-H and H(model) columns list the number of non-hydrogen atoms and hydrogen atoms in the chain respectively. The H(added) column lists the number of hydrogen atoms added and optimized by MolProbity. The Clashes column lists the number of clashes within the asymmetric unit, whereas Symm-Clashes lists symmetry related clashes.

Mol	Chain	Non-H	H(model)	H(added)	Clashes	Symm-Clashes
1	A	3720	0	3627	42	0
1	B	3608	0	3378	40	0
2	A	30	0	36	12	0
2	B	25	0	18	0	0
3	A	1	0	0	0	0
3	B	1	0	0	0	0
4	A	12	0	9	0	0
4	B	4	0	3	2	0

*Continued on next page...*



*Continued from previous page...*

Mol	Chain	Non-H	H(model)	H(added)	Clashes	Symm-Clashes
5	A	410	0	0	9	0
5	B	259	0	0	7	0
All	All	8070	0	7071	83	0

The all-atom clashscore is defined as the number of clashes found per 1000 atoms (including hydrogen atoms). The all-atom clashscore for this structure is 6.

All (83) close contacts within the same asymmetric unit are listed below, sorted by their clash magnitude.

Atom-1	Atom-2	Interatomic distance (Å)	Clash overlap (Å)
1:A:231:GLU:O	1:A:232:LYS:HB2	1.39	1.15
1:A:240[B]:ARG:HD3	5:A:2254:HOH:O	1.54	1.08
1:B:52:ASP:OD2	5:B:2045[A]:HOH:O	1.81	0.95
1:A:240[A]:ARG:HD2	5:A:2254:HOH:O	1.65	0.93
1:A:406:TRP:HB2	2:A:1446[A]:NCW:H122	1.52	0.91
1:B:40:HIS:NE2	5:B:2045[A]:HOH:O	2.08	0.87
1:A:405:GLU:OE2	2:A:1446[A]:NCW:H101	1.74	0.87
1:B:270[B]:GLU:OE2	5:B:2189[B]:HOH:O	1.92	0.86
1:A:138[A]:GLU:OE2	5:A:2189:HOH:O	1.93	0.85
1:B:299:LEU:HD23	1:B:313:VAL:HG22	1.60	0.83
1:A:406:TRP:HB2	2:A:1446[A]:NCW:C12	2.09	0.82
1:A:214[A]:ASP:OD1	5:A:2238:HOH:O	1.97	0.82
1:A:240[B]:ARG:CD	5:A:2254:HOH:O	2.22	0.78
1:B:270[A]:GLU:HG2	5:B:2180:HOH:O	1.86	0.73
1:A:240[B]:ARG:NH1	5:A:2254:HOH:O	1.75	0.72
1:A:407:ALA:HB3	2:A:1446[A]:NCW:H132	1.72	0.72
1:A:231:GLU:O	1:A:232:LYS:CB	2.28	0.68
1:B:315:ARG:HB3	1:B:317:LEU:HD13	1.76	0.66
1:B:358:ASP:OD1	1:B:429:LYS:NZ	2.29	0.64
1:A:405:GLU:OE2	2:A:1446[A]:NCW:C10	2.45	0.64
1:B:270[B]:GLU:CD	5:B:2189[B]:HOH:O	2.31	0.63
1:B:333:TRP:CZ2	1:B:337:LYS:HD3	2.35	0.61
1:A:407:ALA:H	2:A:1446[A]:NCW:H122	1.67	0.60
1:A:237:ARG:NH2	1:A:266[A]:GLU:OE2	2.35	0.60
1:B:421:TYR:HB3	4:B:1448:ACT:H2	1.86	0.58
1:A:160:ASN:OD1	1:A:216:LYS:HE2	2.03	0.58
1:B:141[A]:ASP:OD2	5:B:2116:HOH:O	2.17	0.57
1:A:406:TRP:CB	2:A:1446[A]:NCW:H122	2.31	0.57
1:B:299:LEU:HD23	1:B:313:VAL:CG2	2.33	0.55
1:B:369:GLN:HA	1:B:372:ILE:HD12	1.89	0.54
1:B:299:LEU:HB2	1:B:315:ARG:HD3	1.90	0.54

*Continued on next page...*

*Continued from previous page...*

Atom-1	Atom-2	Interatomic distance (Å)	Clash overlap (Å)
1:B:233:GLU:O	1:B:237[A]:ARG:HG3	2.07	0.54
1:A:407:ALA:N	2:A:1446[A]:NCW:H122	2.24	0.52
1:A:14[B]:VAL:HG23	1:A:73:VAL:HG11	1.92	0.52
1:B:315:ARG:CB	1:B:317:LEU:HD13	2.39	0.52
1:A:138[A]:GLU:CD	5:A:2189:HOH:O	2.43	0.51
1:A:300:VAL:HG13	1:A:310:VAL:HG13	1.92	0.51
1:B:402:ASP:OD2	1:B:418:TYR:HA	2.11	0.51
1:A:240[A]:ARG:CD	5:A:2254:HOH:O	2.40	0.50
1:B:20:GLN:O	1:B:403:ASN:HB2	2.11	0.50
1:B:402:ASP:OD1	1:B:413:ARG:HB3	2.11	0.50
1:A:406:TRP:HB2	2:A:1446[A]:NCW:H121	1.92	0.50
1:A:14[B]:VAL:HG11	1:A:400:LEU:HB2	1.93	0.49
1:B:77:ARG:NH1	1:B:351:GLU:HG3	2.28	0.49
1:B:184[A]:MET:SD	1:B:189:VAL:HG11	2.52	0.49
1:B:63:GLU:O	1:B:67:ILE:HG23	2.13	0.48
2:A:1446[B]:NCW:H8C1	2:A:1446[B]:NCW:H111	1.65	0.48
1:B:421:TYR:CB	4:B:1448:ACT:H2	2.44	0.47
1:A:303:ASP:O	1:A:309:LYS:HA	2.13	0.47
1:B:243:HIS:O	1:B:247:ASN:HB2	2.14	0.47
1:B:315:ARG:HB3	1:B:317:LEU:CD1	2.42	0.47
1:B:418:TYR:HB2	1:B:429:LYS:HE2	1.97	0.46
1:A:20:GLN:O	1:A:403:ASN:HB2	2.16	0.46
1:B:398:TRP:HA	1:B:399:SER:HA	1.73	0.45
1:B:67:ILE:HD11	1:B:417:VAL:CG2	2.46	0.45
1:A:144:ALA:HB2	1:A:203[B]:ARG:HG2	1.98	0.45
1:A:109:LEU:HD21	1:A:157:ARG:HB3	1.98	0.44
1:B:216:LYS:NZ	1:B:346:GLU:OE1	2.30	0.44
1:A:144:ALA:HB2	1:A:203[B]:ARG:CG	2.48	0.44
1:A:14[B]:VAL:HG11	1:A:400:LEU:CA	2.48	0.44
1:A:361:SER:HB2	1:A:363:ASP:OD1	2.17	0.44
1:A:14[B]:VAL:CG1	1:A:400:LEU:HB2	2.48	0.43
1:A:185[B]:ARG:HE	1:A:185[B]:ARG:HB2	1.56	0.43
1:A:240[A]:ARG:CG	5:A:2254:HOH:O	2.66	0.43
1:A:192[A]:ARG:NH1	1:A:271:TYR:O	2.53	0.42
1:B:267:PHE:CE1	1:B:308:ALA:HB2	2.55	0.42
1:B:248:TYR:CD1	1:B:249:PRO:HD3	2.55	0.42
1:B:192:ARG:HG2	1:B:273:PRO:HG3	2.02	0.42
1:B:71:LEU:O	1:B:436:SER:HB2	2.20	0.42
1:B:65:ILE:HG21	1:B:107:THR:HG22	2.02	0.42
1:B:26:LEU:HD21	1:B:32:MET:HG2	2.00	0.42
1:B:355:ALA:HA	1:B:413:ARG:O	2.19	0.41

*Continued on next page...*

Continued from previous page...

Atom-1	Atom-2	Interatomic distance (Å)	Clash overlap (Å)
1:A:398:TRP:HA	1:A:399:SER:HA	1.83	0.41
1:B:67:ILE:HD13	1:B:428:VAL:HG22	2.02	0.41
1:A:407:ALA:CB	2:A:1446[A]:NCW:H132	2.47	0.41
1:A:168:TRP:CZ3	2:A:1446[B]:NCW:H153	2.56	0.41
1:A:14[B]:VAL:HG11	1:A:400:LEU:HA	2.02	0.41
1:A:243:HIS:O	1:A:247:ASN:HB2	2.21	0.41
1:A:266[B]:GLU:OE2	1:A:266[B]:GLU:HA	2.21	0.41
1:A:280:MET:O	1:A:284:GLN:HG3	2.21	0.41
1:B:103:ARG:NH2	5:B:2085[A]:HOH:O	2.42	0.41
1:B:328:PRO:HA	1:B:378:HIS:NE2	2.36	0.41
1:B:139:ILE:HA	1:B:142:TRP:CE3	2.56	0.40

There are no symmetry-related clashes.

## 5.3 Torsion angles [i](#)

### 5.3.1 Protein backbone [i](#)

In the following table, the Percentiles column shows the percent Ramachandran outliers of the chain as a percentile score with respect to all X-ray entries followed by that with respect to entries of similar resolution.

The Analysed column shows the number of residues for which the backbone conformation was analysed, and the total number of residues.

Mol	Chain	Analysed	Favoured	Allowed	Outliers	Percentiles	
1	A	455/468 (97%)	445 (98%)	9 (2%)	1 (0%)	47	38
1	B	451/468 (96%)	428 (95%)	22 (5%)	1 (0%)	47	38
All	All	906/936 (97%)	873 (96%)	31 (3%)	2 (0%)	47	38

All (2) Ramachandran outliers are listed below:

Mol	Chain	Res	Type
1	A	213	LYS
1	B	7	PRO

### 5.3.2 Protein sidechains ⓘ

In the following table, the Percentiles column shows the percent sidechain outliers of the chain as a percentile score with respect to all X-ray entries followed by that with respect to entries of similar resolution.

The Analysed column shows the number of residues for which the sidechain conformation was analysed, and the total number of residues.

Mol	Chain	Analysed	Rotameric	Outliers	Percentiles	
1	A	390/399 (98%)	385 (99%)	5 (1%)	69	68
1	B	366/399 (92%)	356 (97%)	10 (3%)	44	38
All	All	756/798 (95%)	741 (98%)	15 (2%)	57	51

All (15) residues with a non-rotameric sidechain are listed below:

Mol	Chain	Res	Type
1	A	109	LEU
1	A	203[A]	ARG
1	A	203[B]	ARG
1	A	236	ILE
1	A	317	LEU
1	B	67	ILE
1	B	69	GLU
1	B	246	ASN
1	B	296	SER
1	B	336	LYS
1	B	350	THR
1	B	359	VAL
1	B	375	LEU
1	B	381	GLN
1	B	444	LEU

Some sidechains can be flipped to improve hydrogen bonding and reduce clashes. All (2) such sidechains are listed below:

Mol	Chain	Res	Type
1	B	381	GLN
1	B	441	ASN

### 5.3.3 RNA ⓘ

There are no RNA molecules in this entry.

## 5.4 Non-standard residues in protein, DNA, RNA chains ⓘ

There are no non-standard protein/DNA/RNA residues in this entry.

## 5.5 Carbohydrates ⓘ

There are no carbohydrates in this entry.

## 5.6 Ligand geometry ⓘ

Of 10 ligands modelled in this entry, 2 are monoatomic - leaving 8 for Mogul analysis.

In the following table, the Counts columns list the number of bonds (or angles) for which Mogul statistics could be retrieved, the number of bonds (or angles) that are observed in the model and the number of bonds (or angles) that are defined in the Chemical Component Dictionary. The Link column lists molecule types, if any, to which the group is linked. The Z score for a bond length (or angle) is the number of standard deviations the observed value is removed from the expected value. A bond length (or angle) with  $|Z| > 2$  is considered an outlier worth inspection. RMSZ is the root-mean-square of all Z scores of the bond lengths (or angles).

Mol	Type	Chain	Res	Link	Bond lengths			Bond angles		
					Counts	RMSZ	# $ Z  > 2$	Counts	RMSZ	# $ Z  > 2$
2	NCW	A	1446[B]	-	22,23,23	1.29	1 (4%)	24,31,31	1.33	5 (20%)
2	NCW	B	1446[A]	-	22,23,23	1.14	1 (4%)	24,31,31	0.97	2 (8%)
4	ACT	A	1448[A]	-	1,3,3	1.97	0	0,3,3	0.00	-
4	ACT	B	1448	-	1,3,3	0.91	0	0,3,3	0.00	-
4	ACT	A	1449	-	1,3,3	2.02	1 (100%)	0,3,3	0.00	-
4	ACT	A	1448[B]	-	1,3,3	1.78	0	0,3,3	0.00	-
2	NCW	B	1446[B]	-	22,23,23	1.14	1 (4%)	24,31,31	0.98	2 (8%)
2	NCW	A	1446[A]	-	22,23,23	1.32	1 (4%)	24,31,31	1.35	5 (20%)

In the following table, the Chirals column lists the number of chiral outliers, the number of chiral centers analysed, the number of these observed in the model and the number defined in the Chemical Component Dictionary. Similar counts are reported in the Torsion and Rings columns. '-' means no outliers of that kind were identified.

Mol	Type	Chain	Res	Link	Chirals	Torsions	Rings
2	NCW	A	1446[B]	-	-	4/13/42/42	0/3/2/2
2	NCW	B	1446[A]	-	-	7/13/42/42	0/3/2/2
2	NCW	B	1446[B]	-	-	8/13/42/42	0/3/2/2
2	NCW	A	1446[A]	-	-	6/13/42/42	0/3/2/2

All (5) bond length outliers are listed below:

Mol	Chain	Res	Type	Atoms	Z	Observed(Å)	Ideal(Å)
2	A	1446[B]	NCW	C7-S1	-5.13	1.59	1.67
2	A	1446[A]	NCW	C7-S1	-5.13	1.59	1.67
2	B	1446[A]	NCW	C7-S1	-4.69	1.60	1.67
2	B	1446[B]	NCW	C7-S1	-4.69	1.60	1.67
4	A	1449	ACT	CH3-C	2.02	1.51	1.48

All (14) bond angle outliers are listed below:

Mol	Chain	Res	Type	Atoms	Z	Observed(°)	Ideal(°)
2	A	1446[B]	NCW	O2-C2-C1	2.60	114.28	109.23
2	A	1446[A]	NCW	O2-C2-C1	2.60	114.28	109.23
2	A	1446[B]	NCW	O3-C3-C2	-2.44	104.72	110.35
2	A	1446[A]	NCW	O3-C3-C2	-2.44	104.72	110.35
2	A	1446[B]	NCW	S1-C7-N2	-2.38	117.94	122.53
2	A	1446[A]	NCW	S1-C7-N2	-2.38	117.94	122.53
2	B	1446[A]	NCW	C6-C5-N1	-2.22	98.24	99.96
2	B	1446[B]	NCW	C6-C5-N1	-2.22	98.24	99.96
2	B	1446[A]	NCW	O2-C2-C1	2.21	113.51	109.23
2	B	1446[B]	NCW	O2-C2-C1	2.21	113.51	109.23
2	A	1446[B]	NCW	O4-C4-C5	-2.10	106.03	109.77
2	A	1446[A]	NCW	O4-C4-C5	-2.10	106.03	109.77
2	A	1446[B]	NCW	N2-C7-N1	2.05	119.79	116.09
2	A	1446[A]	NCW	N2-C7-N1	2.05	119.79	116.09

There are no chirality outliers.

All (25) torsion outliers are listed below:

Mol	Chain	Res	Type	Atoms
2	B	1446[A]	NCW	S1-C7-N2-C8
2	B	1446[A]	NCW	N1-C7-N2-C8
2	B	1446[B]	NCW	S1-C7-N2-C8
2	B	1446[B]	NCW	N1-C7-N2-C8
2	A	1446[A]	NCW	N1-C7-N2-C8
2	A	1446[A]	NCW	C11-C12-C13-C14
2	B	1446[A]	NCW	C9-C10-C11-C12
2	B	1446[B]	NCW	C9-C10-C11-C12
2	A	1446[A]	NCW	C10-C11-C12-C13
2	A	1446[B]	NCW	C9-C10-C11-C12
2	B	1446[A]	NCW	C11-C12-C13-C14
2	A	1446[A]	NCW	C11-C10-C9-C8
2	B	1446[A]	NCW	C11-C10-C9-C8

*Continued on next page...*

*Continued from previous page...*

Mol	Chain	Res	Type	Atoms
2	B	1446[B]	NCW	C11-C10-C9-C8
2	B	1446[B]	NCW	C10-C11-C12-C13
2	A	1446[A]	NCW	S1-C7-N2-C8
2	B	1446[A]	NCW	C10-C11-C12-C13
2	B	1446[B]	NCW	C11-C12-C13-C14
2	A	1446[B]	NCW	C9-C8-N2-C7
2	A	1446[B]	NCW	C10-C11-C12-C13
2	B	1446[B]	NCW	C12-C13-C14-C15
2	A	1446[B]	NCW	C11-C10-C9-C8
2	A	1446[A]	NCW	N2-C8-C9-C10
2	B	1446[A]	NCW	C9-C8-N2-C7
2	B	1446[B]	NCW	C9-C8-N2-C7

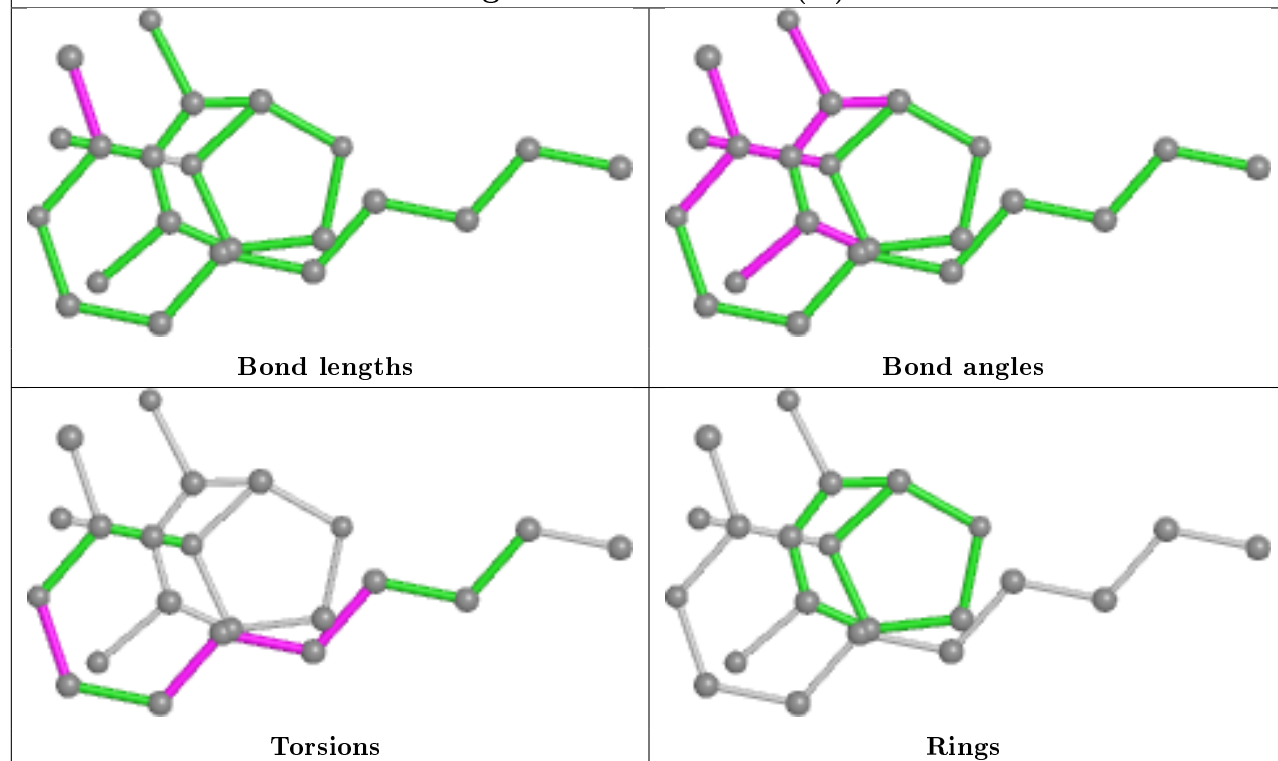
There are no ring outliers.

3 monomers are involved in 14 short contacts:

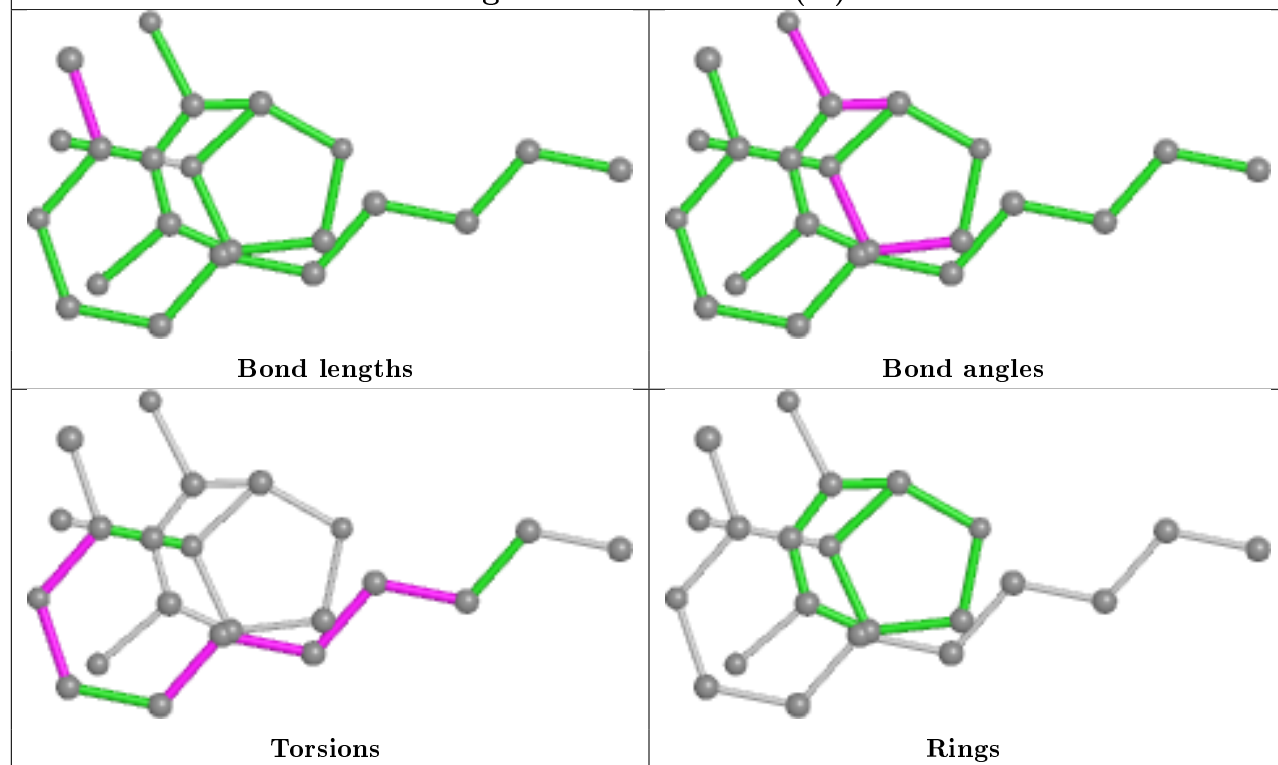
Mol	Chain	Res	Type	Clashes	Symm-Clashes
2	A	1446[B]	NCW	2	0
4	B	1448	ACT	2	0
2	A	1446[A]	NCW	10	0

The following is a two-dimensional graphical depiction of Mogul quality analysis of bond lengths, bond angles, torsion angles, and ring geometry for all instances of the Ligand of Interest. In addition, ligands with molecular weight > 250 and outliers as shown on the validation Tables will also be included. For torsion angles, if less than 5% of the Mogul distribution of torsion angles is within 10 degrees of the torsion angle in question, then that torsion angle is considered an outlier. Any bond that is central to one or more torsion angles identified as an outlier by Mogul will be highlighted in the graph. For rings, the root-mean-square deviation (RMSD) between the ring in question and similar rings identified by Mogul is calculated over all ring torsion angles. If the average RMSD is greater than 60 degrees and the minimal RMSD between the ring in question and any Mogul-identified rings is also greater than 60 degrees, then that ring is considered an outlier. The outliers are highlighted in purple. The color gray indicates Mogul did not find sufficient equivalents in the CSD to analyse the geometry.

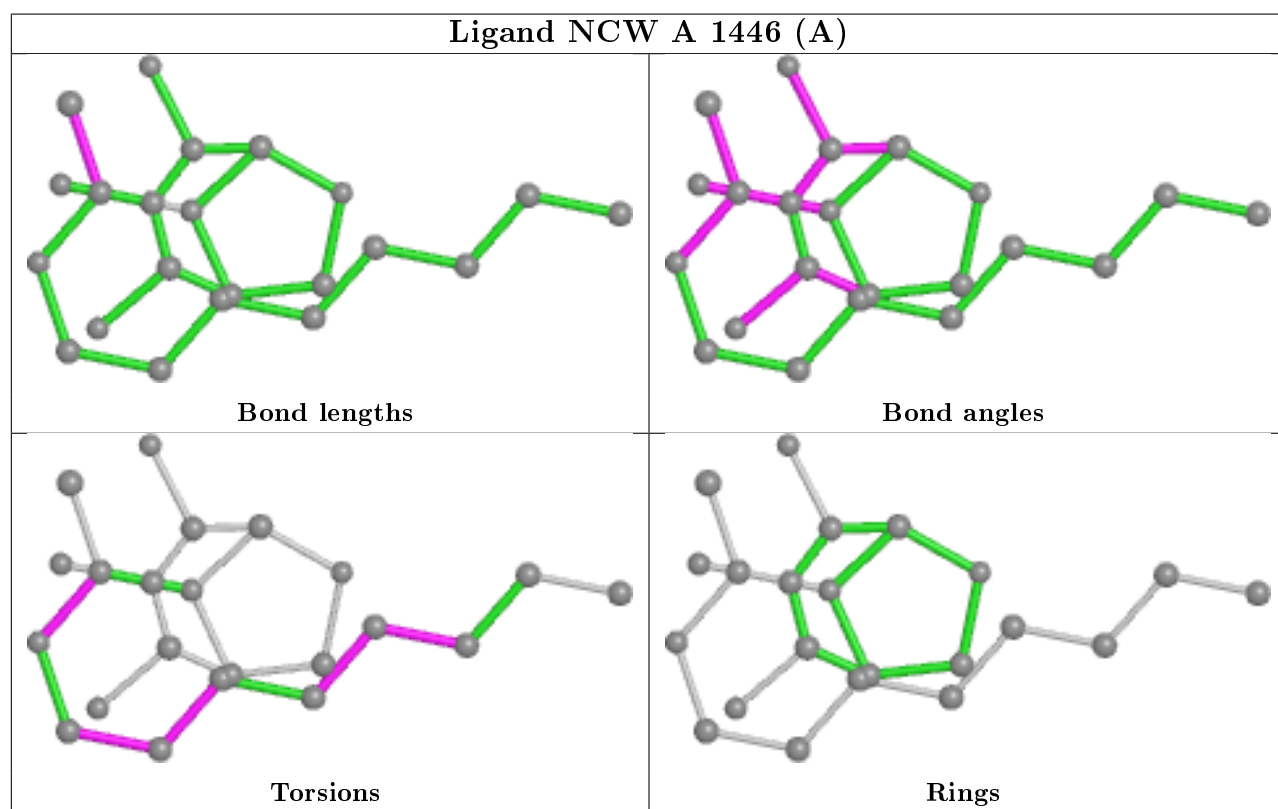
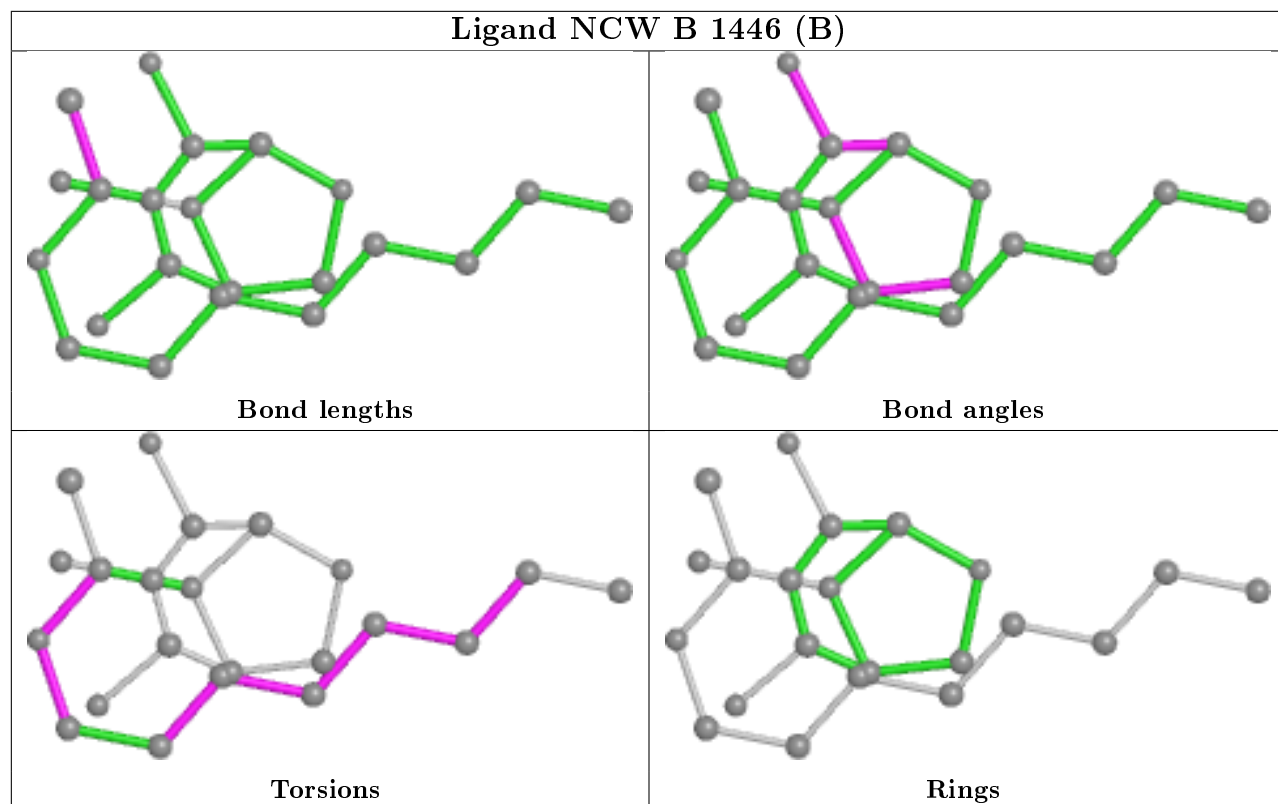
## Ligand NCW A 1446 (B)



## Ligand NCW B 1446 (A)







## 5.7 Other polymers ⓘ

There are no such residues in this entry.

## 5.8 Polymer linkage issues ⓘ

There are no chain breaks in this entry.

## 6 Fit of model and data

### 6.1 Protein, DNA and RNA chains

In the following table, the column labelled ‘#RSRZ> 2’ contains the number (and percentage) of RSRZ outliers, followed by percent RSRZ outliers for the chain as percentile scores relative to all X-ray entries and entries of similar resolution. The OWAB column contains the minimum, median, 95<sup>th</sup> percentile and maximum values of the occupancy-weighted average B-factor per residue. The column labelled ‘Q< 0.9’ lists the number of (and percentage) of residues with an average occupancy less than 0.9.

Mol	Chain	Analysed	<RSRZ>	#RSRZ>2	OWAB(Å <sup>2</sup> )	Q<0.9
1	A	438/468 (93%)	-0.01	19 (4%) 35 38	20, 29, 44, 58	0
1	B	443/468 (94%)	0.71	59 (13%) 3 3	20, 42, 66, 78	0
All	All	881/936 (94%)	0.35	78 (8%) 9 11	20, 33, 62, 78	0

All (78) RSRZ outliers are listed below:

Mol	Chain	Res	Type	RSRZ
1	B	439	VAL	7.3
1	B	364	GLY	6.1
1	B	3	VAL	5.3
1	A	236	ILE	5.2
1	B	379	ILE	4.8
1	B	306	ALA	4.7
1	B	5	LYS	4.6
1	A	3	VAL	4.4
1	B	369	GLN	4.2
1	B	8	GLU	4.1
1	B	359	VAL	3.9
1	B	9	GLY	3.8
1	B	444	LEU	3.8
1	B	304	PRO	3.7
1	B	229	ALA	3.7
1	B	442	ASN	3.4
1	A	303	ASP	3.3
1	B	360	VAL	3.2
1	B	363	ASP	3.2
1	B	331	ILE	3.2
1	B	317	LEU	3.2
1	B	214	ASP	3.2
1	B	316	ASP	3.2
1	B	383	TRP	3.1

*Continued on next page...*

*Continued from previous page...*

Mol	Chain	Res	Type	RSRZ
1	B	333	TRP	3.1
1	B	225	TYR	3.1
1	B	361[A]	SER	3.0
1	B	422	SER	3.0
1	B	395	TYR	3.0
1	B	367	HIS	3.0
1	B	305	ASP	2.9
1	A	362	GLU	2.9
1	B	392	LEU	2.8
1	B	445	GLU	2.8
1	A	304	PRO	2.8
1	B	433	TYR	2.8
1	B	373	ASP	2.7
1	B	365	ARG	2.7
1	B	417	VAL	2.7
1	A	333	TRP	2.7
1	B	441	ASN	2.7
1	A	231	GLU	2.7
1	A	9	GLY	2.7
1	B	307	PRO	2.6
1	A	302	PHE	2.6
1	B	213	LYS	2.6
1	A	274	GLU	2.6
1	B	47	ASN	2.5
1	A	21	ILE	2.5
1	B	112	GLY	2.5
1	B	314	GLU	2.5
1	B	113	ILE	2.5
1	B	349	ILE	2.5
1	B	372	ILE	2.4
1	B	12	TRP	2.4
1	B	401	LEU	2.4
1	B	438	VAL	2.4
1	A	214[A]	ASP	2.4
1	B	319	LYS	2.3
1	B	303	ASP	2.3
1	B	110	GLU	2.3
1	B	299	LEU	2.3
1	B	354	ALA	2.2
1	A	307	PRO	2.2
1	A	389	GLY	2.2
1	B	19	TYR	2.1

*Continued on next page...*

*Continued from previous page...*

Mol	Chain	Res	Type	RSRZ
1	B	332	TYR	2.1
1	B	318	PRO	2.1
1	A	312	PHE	2.1
1	B	73	VAL	2.1
1	B	207	VAL	2.1
1	A	316	ASP	2.1
1	A	237	ARG	2.1
1	A	314	GLU	2.1
1	B	311	SER	2.0
1	B	382	ALA	2.0
1	A	445	GLU	2.0
1	B	302	PHE	2.0

## 6.2 Non-standard residues in protein, DNA, RNA chains ⓘ

There are no non-standard protein/DNA/RNA residues in this entry.

## 6.3 Carbohydrates ⓘ

There are no carbohydrates in this entry.

## 6.4 Ligands ⓘ

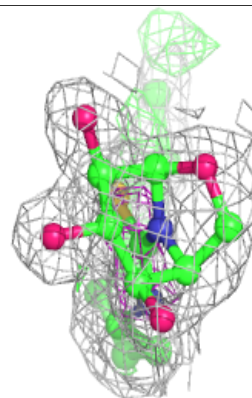
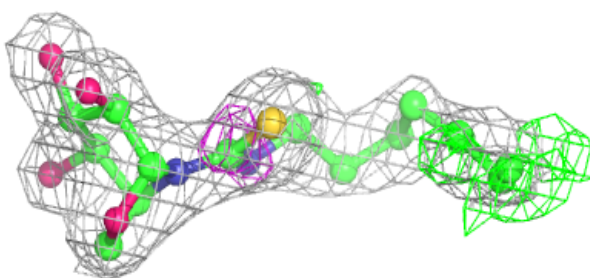
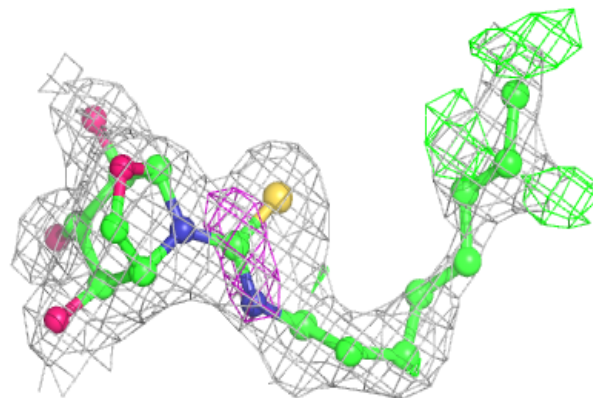
In the following table, the Atoms column lists the number of modelled atoms in the group and the number defined in the chemical component dictionary. The B-factors column lists the minimum, median, 95<sup>th</sup> percentile and maximum values of B factors of atoms in the group. The column labelled 'Q< 0.9' lists the number of atoms with occupancy less than 0.9.

Mol	Type	Chain	Res	Atoms	RSCC	RSR	B-factors(Å <sup>2</sup> )	Q<0.9
4	ACT	A	1449	4/4	0.59	0.29	48,49,49,49	0
4	ACT	B	1448	4/4	0.86	0.17	51,52,52,53	0
2	NCW	A	1446[B]	22/22	0.87	0.21	27,34,38,39	8
2	NCW	A	1446[A]	22/22	0.87	0.21	12,33,38,39	8
2	NCW	B	1446[A]	22/22	0.90	0.18	39,47,49,50	3
2	NCW	B	1446[B]	22/22	0.90	0.18	39,48,51,52	3
3	CA	A	1447	1/1	0.95	0.17	48,48,48,48	0
4	ACT	A	1448[B]	4/4	0.96	0.13	30,31,32,33	4
4	ACT	A	1448[A]	4/4	0.96	0.13	29,29,29,30	4
3	CA	B	1447	1/1	0.98	0.07	38,38,38,38	0

The following is a graphical depiction of the model fit to experimental electron density of all instances of the Ligand of Interest. In addition, ligands with molecular weight > 250 and outliers as shown on the geometry validation Tables will also be included. Each fit is shown from different orientation to approximate a three-dimensional view.

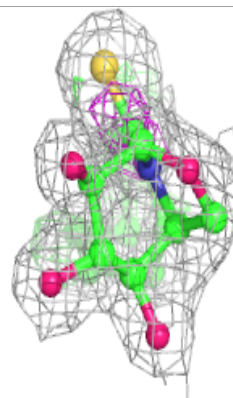
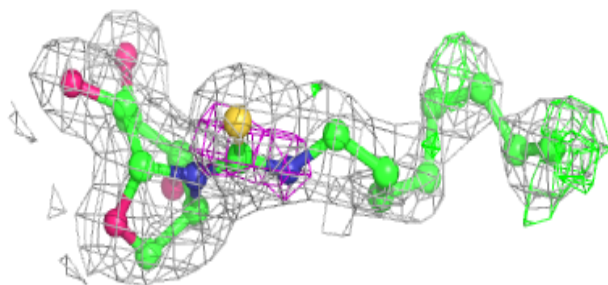
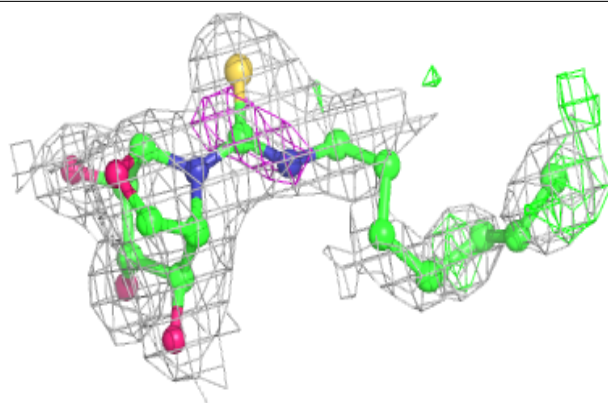
**Electron density around NCW A 1446 (B):**

$2mF_o-DF_c$  (at 0.7 rmsd) in gray  
 $mF_o-DF_c$  (at 3 rmsd) in purple (negative)  
and green (positive)

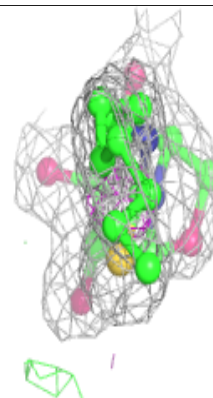
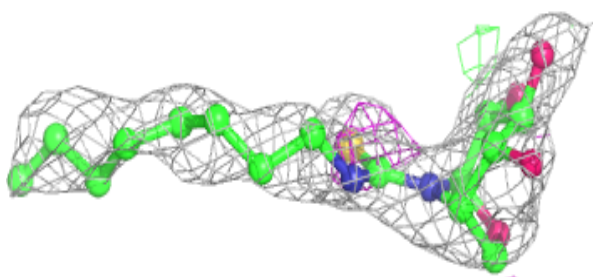
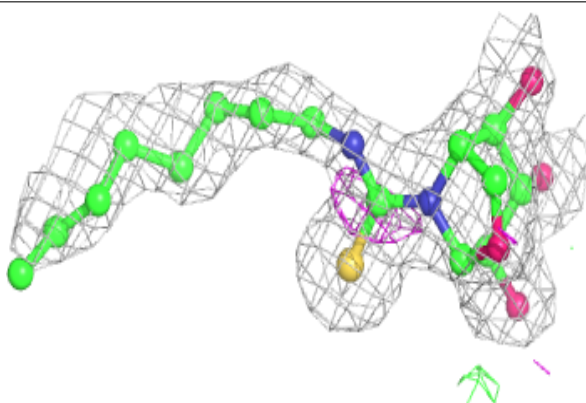


**Electron density around NCW A 1446 (A):**

$2mF_o-DF_c$  (at 0.7 rmsd) in gray  
 $mF_o-DF_c$  (at 3 rmsd) in purple (negative)  
and green (positive)

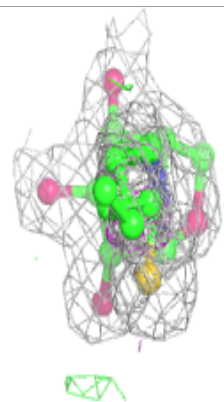
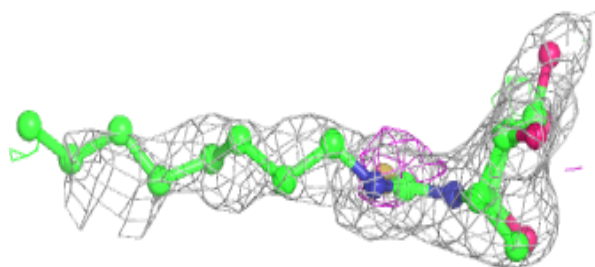
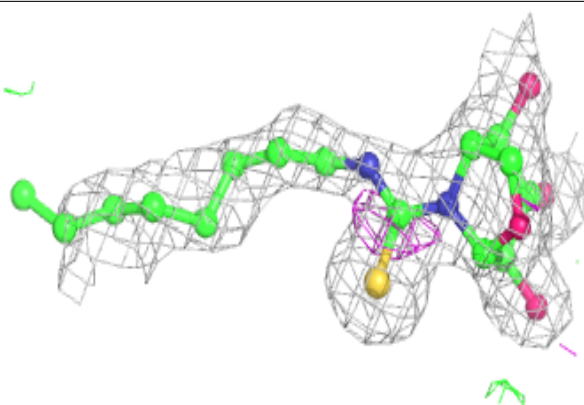
**Electron density around NCW B 1446 (A):**

$2mF_o-DF_c$  (at 0.7 rmsd) in gray  
 $mF_o-DF_c$  (at 3 rmsd) in purple (negative)  
and green (positive)



**Electron density around NCW B 1446 (B):**

$2mF_o-DF_c$  (at 0.7 rmsd) in gray  
 $mF_o-DF_c$  (at 3 rmsd) in purple (negative)  
and green (positive)



## 6.5 Other polymers [i](#)

There are no such residues in this entry.