



Full wwPDB X-ray Structure Validation Report ⓘ

Oct 29, 2020 – 12:04 AM EDT

PDB ID : 6VRV
Title : Discovery of SARxxxx92, a pan-PIM kinase inhibitor, efficacious in a KG1 tumor model
Authors : Barberis, C.E.; Batchelor, J.D.; Liu, J.
Deposited on : 2020-02-10
Resolution : 1.74 Å(reported)

This is a Full wwPDB X-ray Structure Validation Report for a publicly released PDB entry.

We welcome your comments at validation@mail.wwpdb.org

A user guide is available at

<https://www.wwpdb.org/validation/2017/XrayValidationReportHelp>

with specific help available everywhere you see the ⓘ symbol.

The following versions of software and data (see [references ⓘ](#)) were used in the production of this report:

MolProbity : 4.02b-467
Mogul : 1.8.5 (274361), CSD as541be (2020)
Xtriage (Phenix) : 1.13
EDS : 2.14.6
buster-report : 1.1.7 (2018)
Percentile statistics : 20191225.v01 (using entries in the PDB archive December 25th 2019)
Refmac : 5.8.0158
CCP4 : 7.0.044 (Gargrove)
Ideal geometry (proteins) : Engh & Huber (2001)
Ideal geometry (DNA, RNA) : Parkinson et al. (1996)
Validation Pipeline (wwPDB-VP) : 2.14.6

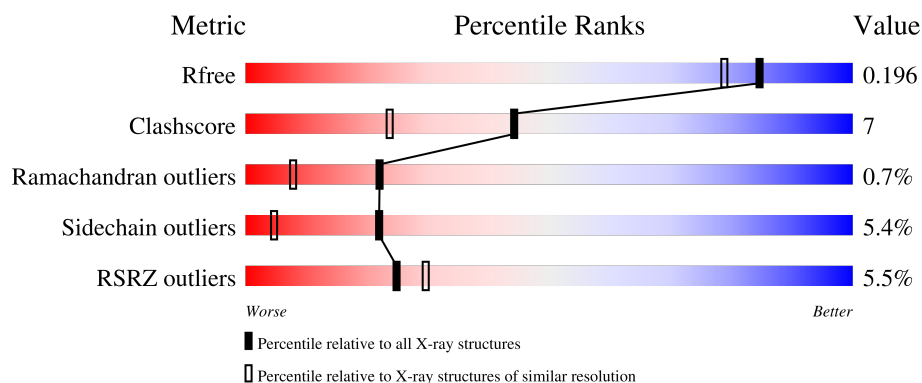
1 Overall quality at a glance

The following experimental techniques were used to determine the structure:

X-RAY DIFFRACTION

The reported resolution of this entry is 1.74 Å.

Percentile scores (ranging between 0-100) for global validation metrics of the entry are shown in the following graphic. The table shows the number of entries on which the scores are based.



Metric	Whole archive (#Entries)	Similar resolution (#Entries, resolution range(Å))
R_{free}	130704	3764 (1.76-1.72)
Clashscore	141614	3923 (1.76-1.72)
Ramachandran outliers	138981	3878 (1.76-1.72)
Sidechain outliers	138945	3878 (1.76-1.72)
RSRZ outliers	127900	3705 (1.76-1.72)

The table below summarises the geometric issues observed across the polymeric chains and their fit to the electron density. The red, orange, yellow and green segments on the lower bar indicate the fraction of residues that contain outliers for ≥ 3 , 2, 1 and 0 types of geometric quality criteria respectively. A grey segment represents the fraction of residues that are not modelled. The numeric value for each fraction is indicated below the corresponding segment, with a dot representing fractions $\leq 5\%$. The upper red bar (where present) indicates the fraction of residues that have poor fit to the electron density. The numeric value is given above the bar.

Mol	Chain	Length	Quality of chain
1	A	274	<div> <div>5%</div> <div>75%</div> <div>19%</div> <div>• •</div> </div>

The following table lists non-polymeric compounds, carbohydrate monomers and non-standard residues in protein, DNA, RNA chains that are outliers for geometric or electron-density-fit criteria:

Mol	Type	Chain	Res	Chirality	Geometry	Clashes	Electron density
3	GOL	A	402	-	X	-	-

2 Entry composition [i](#)

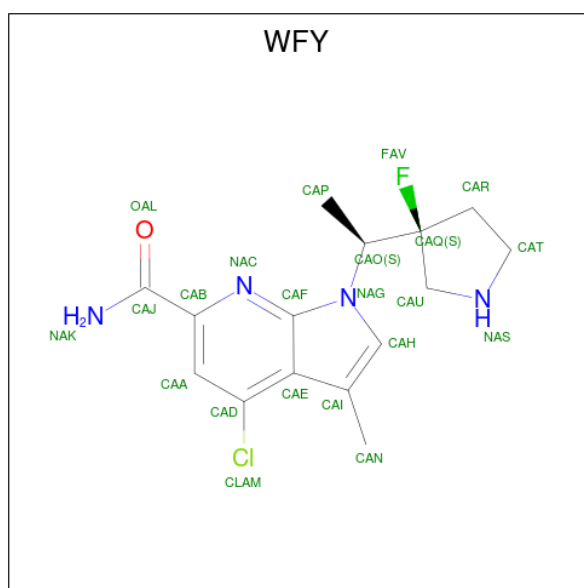
There are 4 unique types of molecules in this entry. The entry contains 2481 atoms, of which 0 are hydrogens and 0 are deuteriums.

In the tables below, the ZeroOcc column contains the number of atoms modelled with zero occupancy, the AltConf column contains the number of residues with at least one atom in alternate conformation and the Trace column contains the number of residues modelled with at most 2 atoms.

- Molecule 1 is a protein called Serine/threonine-protein kinase pim-1.

Mol	Chain	Residues	Atoms					ZeroOcc	AltConf	Trace
1	A	271	Total	C	N	O	S	0	0	0
			2209	1412	387	402	8			

- Molecule 2 is 4-chloro-1-{(1S)-1-[(3S)-3-fluoropyrrolidin-3-yl]ethyl}-3-methyl-1H-pyrrolo[2,3-b]pyridine-6-carboxamide (three-letter code: WFY) (formula: C₁₅H₁₈ClFN₄O) (labeled as "Ligand of Interest" by author).



Mol	Chain	Residues	Atoms						ZeroOcc	AltConf
2	A	1	Total	C	Cl	F	N	O	0	0
			22	15	1	1	4	1		

- Molecule 3 is GLYCEROL (three-letter code: GOL) (formula: C₃H₈O₃).



Mol	Chain	Residues	Atoms			ZeroOcc	AltConf
3	A	1	Total	C	O	0	0
			6	3	3		

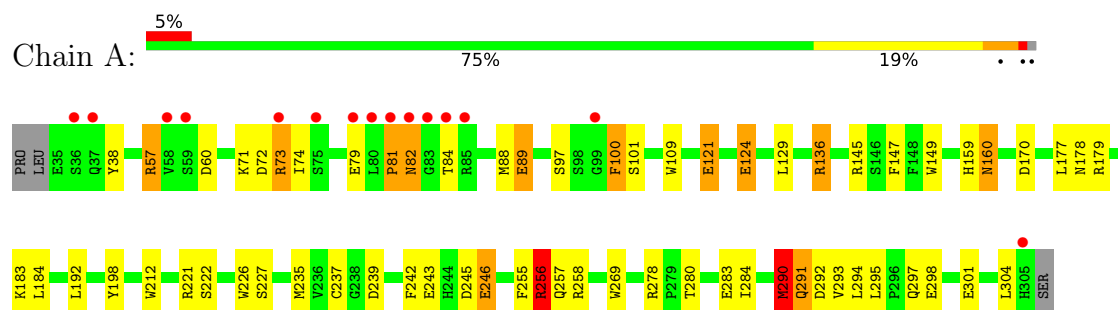
- Molecule 4 is water.

Mol	Chain	Residues	Atoms		ZeroOcc	AltConf
4	A	244	Total	O	0	0
			244	244		

3 Residue-property plots

These plots are drawn for all protein, RNA, DNA and oligosaccharide chains in the entry. The first graphic for a chain summarises the proportions of the various outlier classes displayed in the second graphic. The second graphic shows the sequence view annotated by issues in geometry and electron density. Residues are color-coded according to the number of geometric quality criteria for which they contain at least one outlier: green = 0, yellow = 1, orange = 2 and red = 3 or more. A red dot above a residue indicates a poor fit to the electron density ($RSRZ > 2$). Stretches of 2 or more consecutive residues without any outlier are shown as a green connector. Residues present in the sample, but not in the model, are shown in grey.

- Molecule 1: Serine/threonine-protein kinase pim-1



4 Data and refinement statistics

Property	Value	Source
Space group	P 65	Depositor
Cell constants a, b, c, α , β , γ	98.80Å 98.80Å 81.19Å 90.00° 90.00° 120.00°	Depositor
Resolution (Å)	85.57 – 1.74 37.85 – 1.74	Depositor EDS
% Data completeness (in resolution range)	100.0 (85.57-1.74) 100.0 (37.85-1.74)	Depositor EDS
R_{merge}	0.11	Depositor
R_{sym}	(Not available)	Depositor
$\langle I/\sigma(I) \rangle$ ¹	3.14 (at 1.74Å)	Xtriage
Refinement program	REFMAC 5.6.0117	Depositor
R, R_{free}	0.172 , 0.197 0.171 , 0.196	Depositor DCC
R_{free} test set	2342 reflections (5.07%)	wwPDB-VP
Wilson B-factor (Å ²)	26.4	Xtriage
Anisotropy	0.116	Xtriage
Bulk solvent k_{sol} (e/Å ³), B_{sol} (Å ²)	0.37 , 47.8	EDS
L-test for twinning ²	$\langle L \rangle = 0.50$, $\langle L^2 \rangle = 0.33$	Xtriage
Estimated twinning fraction	0.036 for h,-h-k,-l	Xtriage
F_o, F_c correlation	0.97	EDS
Total number of atoms	2481	wwPDB-VP
Average B, all atoms (Å ²)	32.0	wwPDB-VP

Xtriage's analysis on translational NCS is as follows: *The largest off-origin peak in the Patterson function is 4.30% of the height of the origin peak. No significant pseudotranslation is detected.*

¹Intensities estimated from amplitudes.

²Theoretical values of $\langle |L| \rangle$, $\langle L^2 \rangle$ for acentric reflections are 0.5, 0.333 respectively for untwinned datasets, and 0.375, 0.2 for perfectly twinned datasets.

5 Model quality

5.1 Standard geometry

Bond lengths and bond angles in the following residue types are not validated in this section: GOL, WFY

The Z score for a bond length (or angle) is the number of standard deviations the observed value is removed from the expected value. A bond length (or angle) with $|Z| > 5$ is considered an outlier worth inspection. RMSZ is the root-mean-square of all Z scores of the bond lengths (or angles).

Mol	Chain	Bond lengths		Bond angles	
		RMSZ	$\# Z > 5$	RMSZ	$\# Z > 5$
1	A	1.65	25/2268 (1.1%)	1.44	27/3078 (0.9%)

Chiral center outliers are detected by calculating the chiral volume of a chiral center and verifying if the center is modelled as a planar moiety or with the opposite hand. A planarity outlier is detected by checking planarity of atoms in a peptide group, atoms in a mainchain group or atoms of a sidechain that are expected to be planar.

Mol	Chain	#Chirality outliers	#Planarity outliers
1	A	0	1

All (25) bond length outliers are listed below:

Mol	Chain	Res	Type	Atoms	Z	Observed(Å)	Ideal(Å)
1	A	89	GLU	CD-OE1	15.48	1.42	1.25
1	A	258	ARG	CZ-NH1	13.47	1.50	1.33
1	A	256	ARG	CZ-NH2	8.07	1.43	1.33
1	A	226	TRP	CD2-CE2	7.84	1.50	1.41
1	A	198	TYR	CE1-CZ	7.04	1.47	1.38
1	A	121	GLU	CD-OE1	6.97	1.33	1.25
1	A	109	TRP	CD2-CE2	6.94	1.49	1.41
1	A	212	TRP	CD2-CE2	6.83	1.49	1.41
1	A	269	TRP	CD2-CE2	6.75	1.49	1.41
1	A	258	ARG	CZ-NH2	6.69	1.41	1.33
1	A	222	SER	CA-CB	6.28	1.62	1.52
1	A	159	HIS	CG-CD2	6.18	1.46	1.35
1	A	283	GLU	CD-OE2	6.00	1.32	1.25
1	A	227	SER	CA-CB	5.74	1.61	1.52
1	A	291	GLN	CD-NE2	5.67	1.47	1.32
1	A	198	TYR	CG-CD2	5.61	1.46	1.39
1	A	242	PHE	CE1-CZ	5.60	1.48	1.37
1	A	290	MET	SD-CE	-5.48	1.47	1.77

Continued on next page...

Continued from previous page...

Mol	Chain	Res	Type	Atoms	Z	Observed(Å)	Ideal(Å)
1	A	89	GLU	CB-CG	-5.46	1.41	1.52
1	A	278	ARG	CZ-NH1	5.45	1.40	1.33
1	A	291	GLN	CG-CD	5.28	1.63	1.51
1	A	100	PHE	CE1-CZ	5.28	1.47	1.37
1	A	149	TRP	CD2-CE2	5.27	1.47	1.41
1	A	235	MET	CG-SD	5.13	1.94	1.81
1	A	160	ASN	CB-CG	-5.02	1.39	1.51

All (27) bond angle outliers are listed below:

Mol	Chain	Res	Type	Atoms	Z	Observed(°)	Ideal(°)
1	A	256	ARG	NE-CZ-NH1	-15.26	112.67	120.30
1	A	256	ARG	NE-CZ-NH2	12.42	126.51	120.30
1	A	258	ARG	NE-CZ-NH2	-11.77	114.42	120.30
1	A	89	GLU	CG-CD-OE2	-8.49	101.33	118.30
1	A	255	PHE	CB-CG-CD2	8.32	126.62	120.80
1	A	293	VAL	CG1-CB-CG2	-7.53	98.86	110.90
1	A	255	PHE	CB-CG-CD1	-7.33	115.67	120.80
1	A	136	ARG	NE-CZ-NH2	-7.27	116.66	120.30
1	A	179	ARG	NE-CZ-NH1	7.17	123.89	120.30
1	A	170	ASP	CB-CG-OD1	6.84	124.46	118.30
1	A	278	ARG	NE-CZ-NH2	-6.79	116.91	120.30
1	A	258	ARG	NH1-CZ-NH2	6.30	126.33	119.40
1	A	145	ARG	NE-CZ-NH2	-6.16	117.22	120.30
1	A	177	LEU	CB-CG-CD2	6.01	121.21	111.00
1	A	89	GLU	N-CA-CB	-5.95	99.88	110.60
1	A	89	GLU	CG-CD-OE1	5.73	129.76	118.30
1	A	298	GLU	OE1-CD-OE2	-5.55	116.64	123.30
1	A	245	ASP	CB-CG-OD1	5.54	123.29	118.30
1	A	239	ASP	CB-CG-OD2	-5.49	113.36	118.30
1	A	280	THR	CA-CB-CG2	-5.40	104.83	112.40
1	A	294	LEU	CB-CG-CD1	-5.39	101.84	111.00
1	A	129	LEU	CB-CG-CD2	-5.27	102.05	111.00
1	A	147	PHE	CB-CG-CD2	-5.17	117.19	120.80
1	A	57	ARG	NE-CZ-NH1	5.12	122.86	120.30
1	A	184	LEU	CA-CB-CG	5.12	127.07	115.30
1	A	192	LEU	CB-CG-CD1	-5.09	102.34	111.00
1	A	295	LEU	CB-CG-CD2	-5.02	102.46	111.00

There are no chirality outliers.

All (1) planarity outliers are listed below:

Mol	Chain	Res	Type	Group
1	A	304	LEU	Peptide

5.2 Too-close contacts

In the following table, the Non-H and H(model) columns list the number of non-hydrogen atoms and hydrogen atoms in the chain respectively. The H(added) column lists the number of hydrogen atoms added and optimized by MolProbity. The Clashes column lists the number of clashes within the asymmetric unit, whereas Symm-Clashes lists symmetry related clashes.

Mol	Chain	Non-H	H(model)	H(added)	Clashes	Symm-Clashes
1	A	2209	0	2151	28	0
2	A	22	0	0	0	0
3	A	6	0	8	1	0
4	A	244	0	0	10	1
All	All	2481	0	2159	29	1

The all-atom clashscore is defined as the number of clashes found per 1000 atoms (including hydrogen atoms). The all-atom clashscore for this structure is 7.

All (29) close contacts within the same asymmetric unit are listed below, sorted by their clash magnitude.

Atom-1	Atom-2	Interatomic distance (Å)	Clash overlap (Å)
1:A:256:ARG:H	1:A:256:ARG:HD2	1.37	0.87
1:A:256:ARG:NH1	1:A:256:ARG:HG3	1.91	0.81
1:A:256:ARG:HH11	1:A:256:ARG:HG3	1.45	0.81
1:A:178:ASN:OD1	4:A:501:HOH:O	2.01	0.78
1:A:121:GLU:OE2	1:A:183:LYS:HE2	1.85	0.76
1:A:256:ARG:H	1:A:256:ARG:CD	1.95	0.75
1:A:124:GLU:HG2	4:A:563:HOH:O	1.87	0.74
1:A:246:GLU:HG2	4:A:618:HOH:O	1.87	0.73
1:A:256:ARG:HG2	1:A:257:GLN:HG2	1.73	0.70
1:A:100:PHE:HD2	4:A:508:HOH:O	1.73	0.70
1:A:89:GLU:HB2	4:A:549:HOH:O	2.03	0.58
1:A:221:ARG:HG2	4:A:520:HOH:O	2.02	0.58
1:A:121:GLU:CD	1:A:183:LYS:HE2	2.25	0.57
1:A:100:PHE:CD2	4:A:508:HOH:O	2.53	0.54
1:A:291:GLN:O	1:A:292:ASP:HB3	2.06	0.54
1:A:73:ARG:NH2	4:A:506:HOH:O	2.40	0.53
1:A:256:ARG:HH11	1:A:256:ARG:CG	2.11	0.52
1:A:256:ARG:HD2	1:A:256:ARG:N	2.17	0.50
1:A:81:PRO:O	1:A:82:ASN:HB3	2.13	0.48

Continued on next page...

Continued from previous page...

Atom-1	Atom-2	Interatomic distance (Å)	Clash overlap (Å)
1:A:57:ARG:NH1	1:A:60:ASP:OD2	2.49	0.45
1:A:71:LYS:HA	1:A:74:ILE:HD12	1.98	0.45
1:A:81:PRO:O	1:A:82:ASN:CB	2.65	0.45
1:A:221:ARG:HD2	4:A:638:HOH:O	2.17	0.44
3:A:402:GOL:H32	4:A:600:HOH:O	2.17	0.43
1:A:284:ILE:O	1:A:290:MET:HG3	2.19	0.43
1:A:38:TYR:CE1	1:A:57:ARG:HG3	2.55	0.41
1:A:297:GLN:O	1:A:301:GLU:HG3	2.21	0.41
1:A:237:CYS:HB3	1:A:256:ARG:HD3	2.02	0.41
1:A:88:MET:HE2	1:A:88:MET:HA	2.03	0.40

All (1) symmetry-related close contacts are listed below. The label for Atom-2 includes the symmetry operator and encoded unit-cell translations to be applied.

Atom-1	Atom-2	Interatomic distance (Å)	Clash overlap (Å)
4:A:528:HOH:O	4:A:658:HOH:O[3_665]	2.17	0.03

5.3 Torsion angles

5.3.1 Protein backbone

In the following table, the Percentiles column shows the percent Ramachandran outliers of the chain as a percentile score with respect to all X-ray entries followed by that with respect to entries of similar resolution.

The Analysed column shows the number of residues for which the backbone conformation was analysed, and the total number of residues.

Mol	Chain	Analysed	Favoured	Allowed	Outliers	Percentiles
1	A	269/274 (98%)	262 (97%)	5 (2%)	2 (1%)	22 8

All (2) Ramachandran outliers are listed below:

Mol	Chain	Res	Type
1	A	82	ASN
1	A	81	PRO

5.3.2 Protein sidechains [i](#)

In the following table, the Percentiles column shows the percent sidechain outliers of the chain as a percentile score with respect to all X-ray entries followed by that with respect to entries of similar resolution.

The Analysed column shows the number of residues for which the sidechain conformation was analysed, and the total number of residues.

Mol	Chain	Analysed	Rotameric	Outliers	Percentiles
1	A	242/245 (99%)	229 (95%)	13 (5%)	22 5

All (13) residues with a non-rotameric sidechain are listed below:

Mol	Chain	Res	Type
1	A	72	ASP
1	A	73	ARG
1	A	79	GLU
1	A	84	THR
1	A	97	SER
1	A	101	SER
1	A	124	GLU
1	A	136	ARG
1	A	160	ASN
1	A	243	GLU
1	A	246	GLU
1	A	256	ARG
1	A	290	MET

Some sidechains can be flipped to improve hydrogen bonding and reduce clashes. All (1) such sidechains are listed below:

Mol	Chain	Res	Type
1	A	252	GLN

5.3.3 RNA [i](#)

There are no RNA molecules in this entry.

5.4 Non-standard residues in protein, DNA, RNA chains [i](#)

There are no non-standard protein/DNA/RNA residues in this entry.

5.5 Carbohydrates [i](#)

There are no monosaccharides in this entry.

5.6 Ligand geometry [i](#)

2 ligands are modelled in this entry.

In the following table, the Counts columns list the number of bonds (or angles) for which Mogul statistics could be retrieved, the number of bonds (or angles) that are observed in the model and the number of bonds (or angles) that are defined in the Chemical Component Dictionary. The Link column lists molecule types, if any, to which the group is linked. The Z score for a bond length (or angle) is the number of standard deviations the observed value is removed from the expected value. A bond length (or angle) with $|Z| > 2$ is considered an outlier worth inspection. RMSZ is the root-mean-square of all Z scores of the bond lengths (or angles).

Mol	Type	Chain	Res	Link	Bond lengths			Bond angles		
					Counts	RMSZ	$\# Z > 2$	Counts	RMSZ	$\# Z > 2$
2	WFY	A	401	-	16,24,24	4.13	9 (56%)	20,37,37	3.06	12 (60%)
3	GOL	A	402	-	5,5,5	0.39	0	5,5,5	2.81	2 (40%)

In the following table, the Chirals column lists the number of chiral outliers, the number of chiral centers analysed, the number of these observed in the model and the number defined in the Chemical Component Dictionary. Similar counts are reported in the Torsion and Rings columns. '-' means no outliers of that kind were identified.

Mol	Type	Chain	Res	Link	Chirals	Torsions	Rings
2	WFY	A	401	-	-	0/6/23/23	0/3/3/3
3	GOL	A	402	-	-	4/4/4/4	-

All (9) bond length outliers are listed below:

Mol	Chain	Res	Type	Atoms	Z	Observed(Å)	Ideal(Å)
2	A	401	WFY	CAP-CAO	7.73	1.64	1.53
2	A	401	WFY	CAB-CAJ	-6.54	1.42	1.50
2	A	401	WFY	CAH-NAG	-6.13	1.29	1.38
2	A	401	WFY	CAR-CAT	5.95	1.61	1.53
2	A	401	WFY	CAE-CAF	-5.32	1.28	1.43
2	A	401	WFY	CAA-CAD	4.37	1.46	1.36
2	A	401	WFY	CAF-NAC	4.10	1.42	1.35
2	A	401	WFY	CAD-CAE	-3.99	1.36	1.43
2	A	401	WFY	CAN-CAI	-2.37	1.46	1.51

All (14) bond angle outliers are listed below:

Mol	Chain	Res	Type	Atoms	Z	Observed(°)	Ideal(°)
3	A	402	GOL	O3-C3-C2	-5.75	82.63	110.20
2	A	401	WFY	CAP-CAO-CAQ	-5.27	108.64	114.76
2	A	401	WFY	CAH-CAI-CAE	5.10	114.08	107.56
2	A	401	WFY	OAL-CAJ-CAB	4.95	123.75	119.61
2	A	401	WFY	CAO-NAG-CAF	-4.67	121.76	127.22
2	A	401	WFY	CAI-CAH-NAG	-4.23	102.30	107.49
2	A	401	WFY	CAN-CAI-CAH	-3.58	120.19	127.92
2	A	401	WFY	CAA-CAD-CAE	-3.52	118.18	121.63
2	A	401	WFY	OAL-CAJ-NAK	-3.20	118.03	122.58
2	A	401	WFY	CAA-CAB-NAC	-3.08	117.01	124.50
2	A	401	WFY	CAA-CAB-CAJ	2.71	127.06	118.59
3	A	402	GOL	O2-C2-C1	2.24	119.01	109.12
2	A	401	WFY	CAI-CAE-CAF	-2.09	102.87	106.55
2	A	401	WFY	CAR-CAT-NAS	-2.06	100.86	105.58

There are no chirality outliers.

All (4) torsion outliers are listed below:

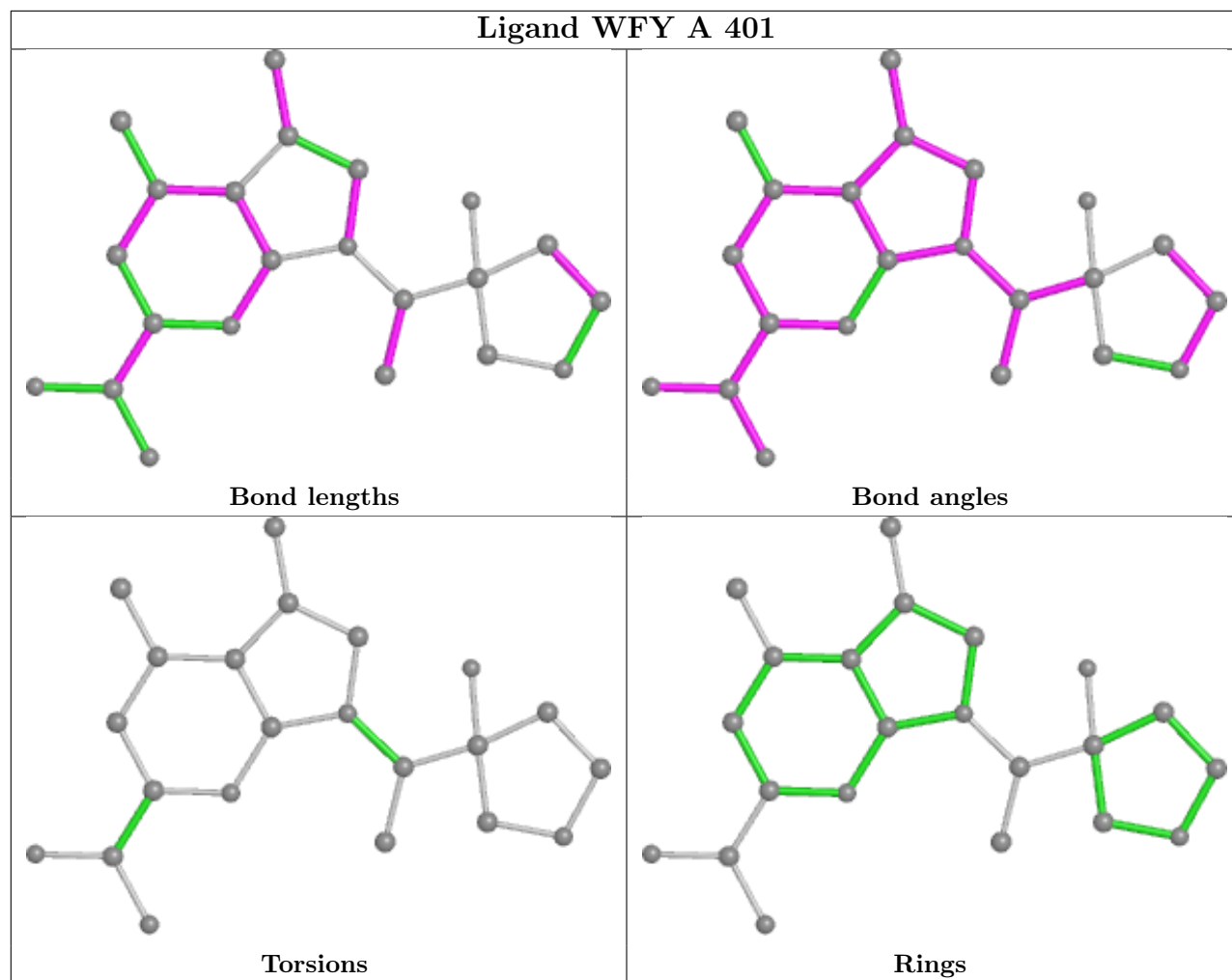
Mol	Chain	Res	Type	Atoms
3	A	402	GOL	O1-C1-C2-C3
3	A	402	GOL	C1-C2-C3-O3
3	A	402	GOL	O1-C1-C2-O2
3	A	402	GOL	O2-C2-C3-O3

There are no ring outliers.

1 monomer is involved in 1 short contact:

Mol	Chain	Res	Type	Clashes	Symm-Clashes
3	A	402	GOL	1	0

The following is a two-dimensional graphical depiction of Mogul quality analysis of bond lengths, bond angles, torsion angles, and ring geometry for all instances of the Ligand of Interest. In addition, ligands with molecular weight > 250 and outliers as shown on the validation Tables will also be included. For torsion angles, if less than 5% of the Mogul distribution of torsion angles is within 10 degrees of the torsion angle in question, then that torsion angle is considered an outlier. Any bond that is central to one or more torsion angles identified as an outlier by Mogul will be highlighted in the graph. For rings, the root-mean-square deviation (RMSD) between the ring in question and similar rings identified by Mogul is calculated over all ring torsion angles. If the average RMSD is greater than 60 degrees and the minimal RMSD between the ring in question and any Mogul-identified rings is also greater than 60 degrees, then that ring is considered an outlier. The outliers are highlighted in purple. The color gray indicates Mogul did not find sufficient equivalents in the CSD to analyse the geometry.



5.7 Other polymers [i](#)

There are no such residues in this entry.

5.8 Polymer linkage issues [i](#)

There are no chain breaks in this entry.

6 Fit of model and data [i](#)

6.1 Protein, DNA and RNA chains [i](#)

In the following table, the column labelled ‘#RSRZ> 2’ contains the number (and percentage) of RSRZ outliers, followed by percent RSRZ outliers for the chain as percentile scores relative to all X-ray entries and entries of similar resolution. The OWAB column contains the minimum, median, 95th percentile and maximum values of the occupancy-weighted average B-factor per residue. The column labelled ‘Q< 0.9’ lists the number of (and percentage) of residues with an average occupancy less than 0.9.

Mol	Chain	Analysed	<RSRZ>	#RSRZ>2		OWAB(Å ²)	Q<0.9
1	A	271/274 (98%)	0.16	15 (5%)	25 30	16, 26, 64, 84	0

All (15) RSRZ outliers are listed below:

Mol	Chain	Res	Type	RSRZ
1	A	83	GLY	7.5
1	A	80	LEU	6.3
1	A	305	HIS	5.7
1	A	84	THR	4.6
1	A	36	SER	4.5
1	A	58	VAL	4.4
1	A	81	PRO	3.9
1	A	85	ARG	3.8
1	A	82	ASN	3.2
1	A	73	ARG	2.4
1	A	79	GLU	2.4
1	A	99	GLY	2.3
1	A	37	GLN	2.3
1	A	59	SER	2.2
1	A	75	SER	2.1

6.2 Non-standard residues in protein, DNA, RNA chains [i](#)

There are no non-standard protein/DNA/RNA residues in this entry.

6.3 Carbohydrates [i](#)

There are no monosaccharides in this entry.

6.4 Ligands

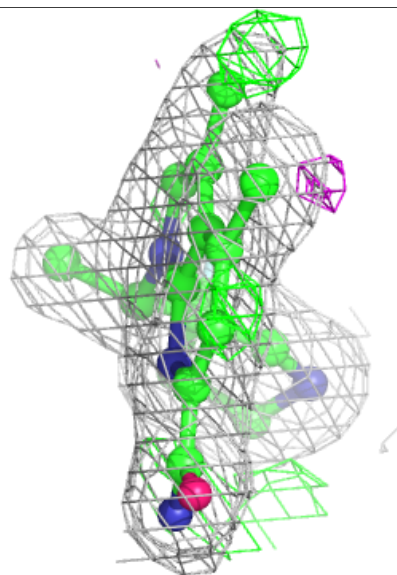
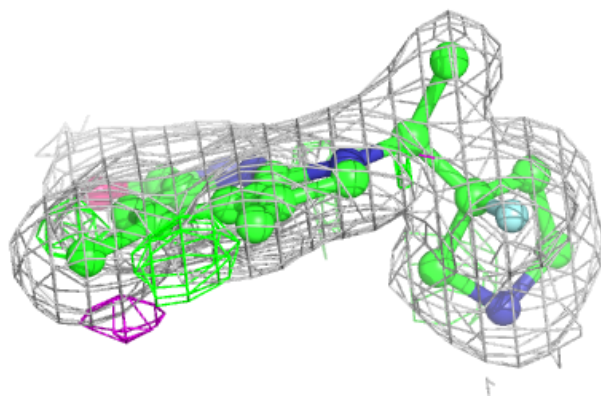
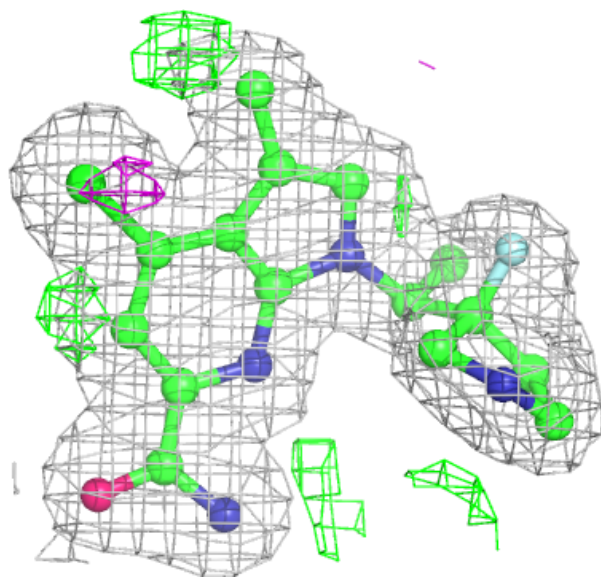
In the following table, the Atoms column lists the number of modelled atoms in the group and the number defined in the chemical component dictionary. The B-factors column lists the minimum, median, 95th percentile and maximum values of B factors of atoms in the group. The column labelled 'Q< 0.9' lists the number of atoms with occupancy less than 0.9.

Mol	Type	Chain	Res	Atoms	RSCC	RSR	B-factors(\AA^2)	Q<0.9
3	GOL	A	402	6/6	0.96	0.11	27,45,51,55	0
2	WFY	A	401	22/22	0.97	0.07	20,23,28,31	0

The following is a graphical depiction of the model fit to experimental electron density of all instances of the Ligand of Interest. In addition, ligands with molecular weight > 250 and outliers as shown on the geometry validation Tables will also be included. Each fit is shown from different orientation to approximate a three-dimensional view.

Electron density around WFY A 401:

$2mF_o-DF_c$ (at 0.7 rmsd) in gray
 mF_o-DF_c (at 3 rmsd) in purple (negative)
and green (positive)



6.5 Other polymers [i](#)

There are no such residues in this entry.