



# Full wwPDB X-ray Structure Validation Report ⓘ

May 16, 2020 – 06:32 pm BST

PDB ID : 3VS6  
Title : Crystal structure of HCK complexed with a pyrazolo-pyrimidine inhibitor tert-butyl {4-[4-amino-1-(propan-2-yl)-1H-pyrazolo[3,4-d]pyrimidin-3-yl]-2-methoxyphenyl}carbamate  
Authors : Kuratani, M.; Honda, K.; Tomabechei, Y.; Toyama, M.; Handa, N.; Yokoyama, S.  
Deposited on : 2012-04-21  
Resolution : 2.37 Å(reported)

This is a Full wwPDB X-ray Structure Validation Report for a publicly released PDB entry.

We welcome your comments at [validation@mail.wwpdb.org](mailto:validation@mail.wwpdb.org)

A user guide is available at

<https://www.wwpdb.org/validation/2017/XrayValidationReportHelp>

with specific help available everywhere you see the ⓘ symbol.

---

The following versions of software and data (see [references ⓘ](#)) were used in the production of this report:

MolProbity : 4.02b-467  
Mogul : 1.8.5 (274361), CSD as541be (2020)  
Xtriage (Phenix) : 1.13  
EDS : 2.11  
buster-report : 1.1.7 (2018)  
Percentile statistics : 20191225.v01 (using entries in the PDB archive December 25th 2019)  
Refmac : 5.8.0158  
CCP4 : 7.0.044 (Gargrove)  
Ideal geometry (proteins) : Engh & Huber (2001)  
Ideal geometry (DNA, RNA) : Parkinson et al. (1996)  
Validation Pipeline (wwPDB-VP) : 2.11

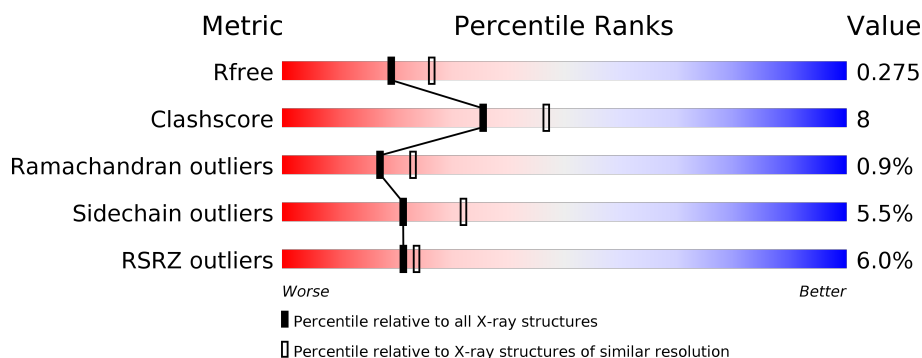
# 1 Overall quality at a glance

The following experimental techniques were used to determine the structure:

## *X-RAY DIFFRACTION*

The reported resolution of this entry is 2.37 Å.

Percentile scores (ranging between 0-100) for global validation metrics of the entry are shown in the following graphic. The table shows the number of entries on which the scores are based.



Metric	Whole archive (#Entries)	Similar resolution (#Entries, resolution range(Å))
$R_{free}$	130704	5509 (2.40-2.36)
Clashscore	141614	6082 (2.40-2.36)
Ramachandran outliers	138981	5973 (2.40-2.36)
Sidechain outliers	138945	5975 (2.40-2.36)
RSRZ outliers	127900	5397 (2.40-2.36)

The table below summarises the geometric issues observed across the polymeric chains and their fit to the electron density. The red, orange, yellow and green segments on the lower bar indicate the fraction of residues that contain outliers for  $\geq 3$ , 2, 1 and 0 types of geometric quality criteria respectively. A grey segment represents the fraction of residues that are not modelled. The numeric value for each fraction is indicated below the corresponding segment, with a dot representing fractions  $\leq 5\%$ . The upper red bar (where present) indicates the fraction of residues that have poor fit to the electron density. The numeric value is given above the bar.

Mol	Chain	Length	Quality of chain
1	A	454	<div> <div>3%</div> <div> <div></div> <div>78%</div> <div>16%</div> <div>• •</div> </div> </div>
1	B	454	<div> <div>8%</div> <div> <div></div> <div>73%</div> <div>21%</div> <div>• •</div> </div> </div>

## 2 Entry composition

There are 5 unique types of molecules in this entry. The entry contains 7398 atoms, of which 0 are hydrogens and 0 are deuteriums.

In the tables below, the ZeroOcc column contains the number of atoms modelled with zero occupancy, the AltConf column contains the number of residues with at least one atom in alternate conformation and the Trace column contains the number of residues modelled with at most 2 atoms.

- Molecule 1 is a protein called Tyrosine-protein kinase HCK.

Mol	Chain	Residues	Atoms						ZeroOcc	AltConf	Trace
1	A	435	Total	C	N	O	P	S	0	0	0
			3518	2250	592	655	1	20			
1	B	435	Total	C	N	O	P	S	0	0	0
			3518	2250	592	655	1	20			

There are 22 discrepancies between the modelled and reference sequences:

Chain	Residue	Modelled	Actual	Comment	Reference
A	78	GLY	-	EXPRESSION TAG	UNP P08631
A	79	ALA	-	EXPRESSION TAG	UNP P08631
A	80	MET	-	EXPRESSION TAG	UNP P08631
A	81	GLY	-	EXPRESSION TAG	UNP P08631
A	82	SER	-	EXPRESSION TAG	UNP P08631
A	83	GLY	-	EXPRESSION TAG	UNP P08631
A	84	ILE	-	EXPRESSION TAG	UNP P08631
A	85	ARG	-	EXPRESSION TAG	UNP P08631
A	528	GLU	GLN	ENGINEERED MUTATION	UNP P08631
A	529	GLU	GLN	ENGINEERED MUTATION	UNP P08631
A	530	ILE	GLN	ENGINEERED MUTATION	UNP P08631
B	78	GLY	-	EXPRESSION TAG	UNP P08631
B	79	ALA	-	EXPRESSION TAG	UNP P08631
B	80	MET	-	EXPRESSION TAG	UNP P08631
B	81	GLY	-	EXPRESSION TAG	UNP P08631
B	82	SER	-	EXPRESSION TAG	UNP P08631
B	83	GLY	-	EXPRESSION TAG	UNP P08631
B	84	ILE	-	EXPRESSION TAG	UNP P08631
B	85	ARG	-	EXPRESSION TAG	UNP P08631
B	528	GLU	GLN	ENGINEERED MUTATION	UNP P08631
B	529	GLU	GLN	ENGINEERED MUTATION	UNP P08631
B	530	ILE	GLN	ENGINEERED MUTATION	UNP P08631

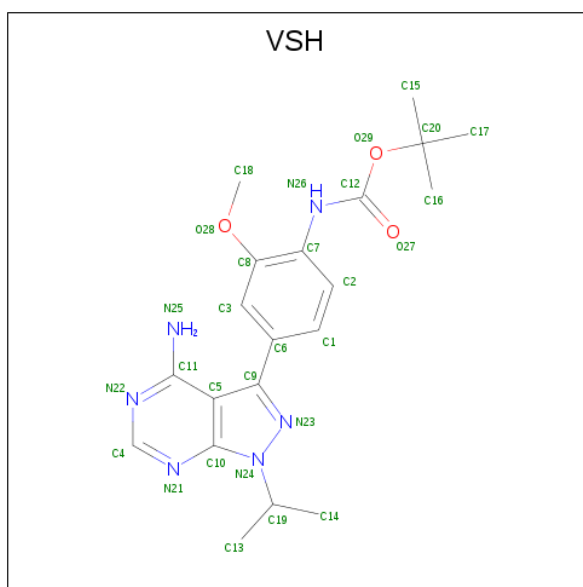
- Molecule 2 is CALCIUM ION (three-letter code: CA) (formula: Ca).

Mol	Chain	Residues	Atoms	ZeroOcc	AltConf
2	B	2	Total Ca 2 2	0	0
2	A	2	Total Ca 2 2	0	0

- Molecule 3 is CHLORIDE ION (three-letter code: CL) (formula: Cl).

Mol	Chain	Residues	Atoms	ZeroOcc	AltConf
3	B	1	Total Cl 1 1	0	0
3	A	1	Total Cl 1 1	0	0

- Molecule 4 is tert-butyl {4-[4-amino-1-(propan-2-yl)-1H-pyrazolo[3,4-d]pyrimidin-3-yl]-2-methoxyphenyl}carbamate (three-letter code: VSH) (formula: C<sub>20</sub>H<sub>26</sub>N<sub>6</sub>O<sub>3</sub>).



Mol	Chain	Residues	Atoms	ZeroOcc	AltConf
4	A	1	Total C N O 29 20 6 3	0	0
4	B	1	Total C N O 29 20 6 3	0	0

- Molecule 5 is water.

Mol	Chain	Residues	Atoms	ZeroOcc	AltConf
5	A	168	Total O 168 168	0	0

*Continued on next page...*

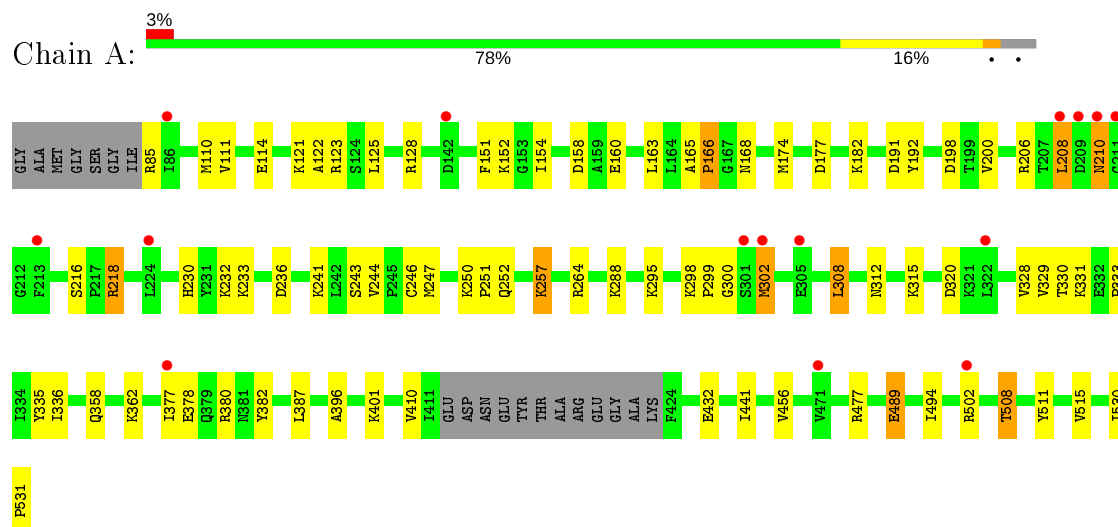
*Continued from previous page...*

Mol	Chain	Residues	Atoms		ZeroOcc	AltConf
5	B	130	Total	O	0	0
			130	130		

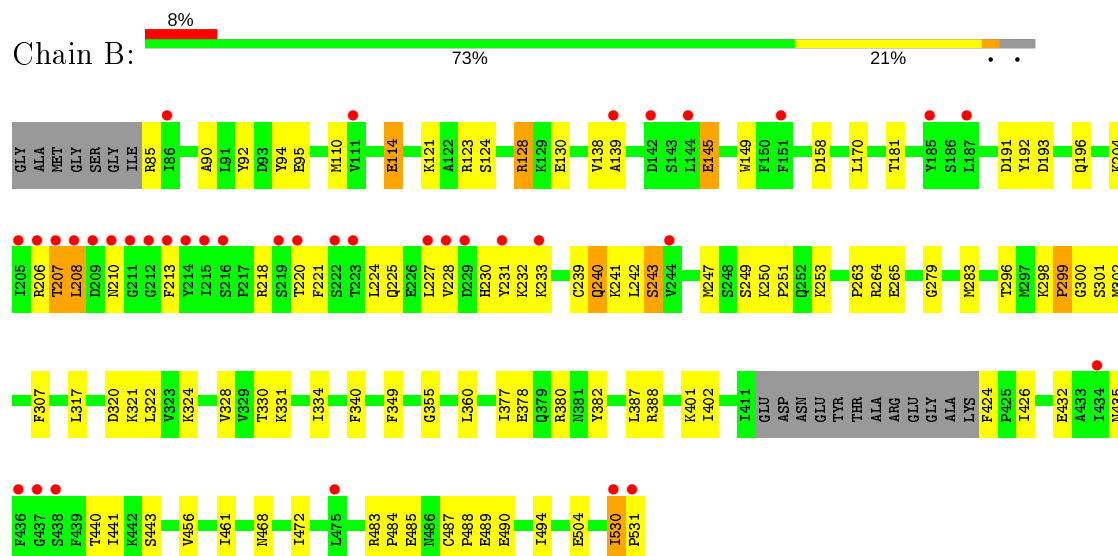
### 3 Residue-property plots [i](#)

These plots are drawn for all protein, RNA and DNA chains in the entry. The first graphic for a chain summarises the proportions of the various outlier classes displayed in the second graphic. The second graphic shows the sequence view annotated by issues in geometry and electron density. Residues are color-coded according to the number of geometric quality criteria for which they contain at least one outlier: green = 0, yellow = 1, orange = 2 and red = 3 or more. A red dot above a residue indicates a poor fit to the electron density ( $RSRZ > 2$ ). Stretches of 2 or more consecutive residues without any outlier are shown as a green connector. Residues present in the sample, but not in the model, are shown in grey.

#### • Molecule 1: Tyrosine-protein kinase HCK



#### • Molecule 1: Tyrosine-protein kinase HCK



## 4 Data and refinement statistics

Property	Value	Source
Space group	P 21 21 21	Depositor
Cell constants a, b, c, $\alpha$ , $\beta$ , $\gamma$	74.61 Å 96.39 Å 182.12 Å 90.00° 90.00° 90.00°	Depositor
Resolution (Å)	47.09 – 2.37 47.09 – 2.37	Depositor EDS
% Data completeness (in resolution range)	98.0 (47.09-2.37) 98.0 (47.09-2.37)	Depositor EDS
$R_{merge}$	(Not available)	Depositor
$R_{sym}$	(Not available)	Depositor
$\langle I/\sigma(I) \rangle$ <sup>1</sup>	4.57 (at 2.37 Å)	Xtriage
Refinement program	PHENIX (phenix.refine: 1.7.3_928)	Depositor
R, $R_{free}$	0.230 , 0.280 0.222 , 0.275	Depositor DCC
$R_{free}$ test set	2678 reflections (5.06%)	wwPDB-VP
Wilson B-factor (Å <sup>2</sup> )	59.9	Xtriage
Anisotropy	0.159	Xtriage
Bulk solvent $k_{sol}$ (e/Å <sup>3</sup> ), $B_{sol}$ (Å <sup>2</sup> )	0.33 , 56.4	EDS
L-test for twinning <sup>2</sup>	$\langle  L  \rangle = 0.50$ , $\langle L^2 \rangle = 0.34$	Xtriage
Estimated twinning fraction	No twinning to report.	Xtriage
$F_o, F_c$ correlation	0.95	EDS
Total number of atoms	7398	wwPDB-VP
Average B, all atoms (Å <sup>2</sup> )	71.0	wwPDB-VP

Xtriage's analysis on translational NCS is as follows: *The analyses of the Patterson function reveals a significant off-origin peak that is 36.48 % of the origin peak, indicating pseudo-translational symmetry. The chance of finding a peak of this or larger height randomly in a structure without pseudo-translational symmetry is equal to 4.9623e-04. The detected translational NCS is most likely also responsible for the elevated intensity ratio.*

<sup>1</sup> Intensities estimated from amplitudes.

<sup>2</sup> Theoretical values of  $\langle |L| \rangle$ ,  $\langle L^2 \rangle$  for acentric reflections are 0.5, 0.333 respectively for untwinned datasets, and 0.375, 0.2 for perfectly twinned datasets.

## 5 Model quality

### 5.1 Standard geometry

Bond lengths and bond angles in the following residue types are not validated in this section: VSH, CA, PTR, CL

The Z score for a bond length (or angle) is the number of standard deviations the observed value is removed from the expected value. A bond length (or angle) with  $|Z| > 5$  is considered an outlier worth inspection. RMSZ is the root-mean-square of all Z scores of the bond lengths (or angles).

Mol	Chain	Bond lengths		Bond angles	
		RMSZ	$\# Z  > 5$	RMSZ	$\# Z  > 5$
1	A	0.36	0/3585	0.49	0/4839
1	B	0.35	0/3585	0.48	0/4839
All	All	0.35	0/7170	0.48	0/9678

There are no bond length outliers.

There are no bond angle outliers.

There are no chirality outliers.

There are no planarity outliers.

### 5.2 Too-close contacts

In the following table, the Non-H and H(model) columns list the number of non-hydrogen atoms and hydrogen atoms in the chain respectively. The H(added) column lists the number of hydrogen atoms added and optimized by MolProbity. The Clashes column lists the number of clashes within the asymmetric unit, whereas Symm-Clashes lists symmetry related clashes.

Mol	Chain	Non-H	H(model)	H(added)	Clashes	Symm-Clashes
1	A	3518	0	3490	54	0
1	B	3518	0	3490	60	0
2	A	2	0	0	0	0
2	B	2	0	0	0	0
3	A	1	0	0	1	0
3	B	1	0	0	1	0
4	A	29	0	26	2	0
4	B	29	0	26	0	0
5	A	168	0	0	16	0
5	B	130	0	0	10	0
All	All	7398	0	7032	114	0



The all-atom clashscore is defined as the number of clashes found per 1000 atoms (including hydrogen atoms). The all-atom clashscore for this structure is 8.

All (114) close contacts within the same asymmetric unit are listed below, sorted by their clash magnitude.

Atom-1	Atom-2	Interatomic distance (Å)	Clash overlap (Å)
1:B:298:LYS:HD3	1:B:299:PRO:HD2	1.67	0.76
1:B:208:LEU:HB3	1:B:210:ASN:H	1.50	0.74
1:A:295:LYS:NZ	5:A:861:HOH:O	2.22	0.73
1:B:110:MET:HG2	1:B:124:SER:HA	1.71	0.73
1:B:232:LYS:O	1:B:241:LYS:NZ	2.22	0.72
1:A:85:ARG:N	5:A:768:HOH:O	2.22	0.72
1:B:377:ILE:HG23	1:B:382:TYR:HB3	1.74	0.68
1:A:218:ARG:NH1	1:A:236:ASP:OD1	2.26	0.68
1:B:240:GLN:O	5:B:824:HOH:O	2.10	0.68
1:A:264:ARG:NH2	1:A:331:LYS:O	2.25	0.68
4:A:603:VSH:N23	5:A:868:HOH:O	2.25	0.68
1:B:191:ASP:OD1	1:B:192:TYR:N	2.28	0.67
1:A:154:ILE:O	5:A:867:HOH:O	2.12	0.67
1:B:253:LYS:NZ	5:B:726:HOH:O	2.27	0.67
1:B:85:ARG:N	5:B:794:HOH:O	2.27	0.67
1:B:231:TYR:O	5:B:753:HOH:O	2.12	0.66
1:B:94:TYR:HE1	1:B:253:LYS:HE2	1.61	0.66
1:B:239:CYS:O	1:B:240:GLN:NE2	2.29	0.66
1:A:232:LYS:O	1:A:241:LYS:NZ	2.26	0.64
1:B:224:LEU:HA	1:B:227:LEU:HB3	1.78	0.64
1:A:377:ILE:HG23	1:A:382:TYR:HB3	1.81	0.63
1:A:177:ASP:O	5:A:867:HOH:O	2.16	0.61
1:A:329:VAL:HB	1:A:335:TYR:HB2	1.83	0.61
1:B:170:LEU:O	1:B:243:SER:OG	2.15	0.61
1:A:111:VAL:HG23	1:A:125:LEU:HD21	1.82	0.60
1:A:206:ARG:NH2	1:B:489:GLU:OE1	2.33	0.60
1:B:181:THR:OG1	1:B:204:LYS:NZ	2.32	0.59
1:B:123:ARG:NH1	1:B:130:GLU:OE2	2.36	0.59
1:B:440:THR:HG23	1:B:443:SER:H	1.69	0.58
1:A:206:ARG:NH2	5:A:847:HOH:O	2.34	0.58
1:B:94:TYR:CE1	1:B:253:LYS:HE2	2.38	0.58
1:B:264:ARG:NH2	1:B:331:LYS:O	2.37	0.57
1:A:312:ASN:ND2	5:A:815:HOH:O	2.32	0.56
1:A:165:ALA:O	1:A:168:ASN:ND2	2.33	0.56
1:A:210:ASN:N	1:A:210:ASN:OD1	2.39	0.56
1:A:257:LYS:NZ	5:A:829:HOH:O	2.32	0.56
1:A:295:LYS:HB3	1:A:336:ILE:HB	1.88	0.56

*Continued on next page...*

*Continued from previous page...*

Atom-1	Atom-2	Interatomic distance (Å)	Clash overlap (Å)
1:A:380:ARG:NH1	5:A:845:HOH:O	2.39	0.55
1:B:483:ARG:NH1	1:B:487:CYS:O	2.40	0.55
1:A:206:ARG:NH1	5:A:783:HOH:O	2.40	0.55
1:A:378:GLU:HG3	1:A:441:ILE:HG12	1.89	0.55
1:A:163:LEU:HD12	1:A:246:CYS:SG	2.48	0.54
1:A:151:PHE:HB3	1:A:154:ILE:HD13	1.91	0.53
1:B:241:LYS:HA	5:B:753:HOH:O	2.09	0.53
1:A:508:THR:HG23	1:A:511:TYR:H	1.74	0.52
1:B:114:GLU:HB2	1:B:121:LYS:HB3	1.92	0.52
1:B:139:ALA:HB1	1:B:145:GLU:HG3	1.91	0.52
1:A:158:ASP:OD1	5:A:814:HOH:O	2.19	0.52
1:A:123:ARG:NH1	3:A:602:CL:CL	2.80	0.52
1:B:221:PHE:HZ	1:B:230:HIS:CD2	2.28	0.51
1:B:360:LEU:HD21	1:B:488:PRO:HD3	1.93	0.51
1:A:151:PHE:CD1	1:A:174:MET:HB2	2.46	0.50
1:B:468:ASN:O	1:B:472:ILE:HG13	2.11	0.50
1:A:489:GLU:OE1	1:B:206:ARG:NH2	2.45	0.50
1:B:388:ARG:NH1	5:B:748:HOH:O	2.40	0.50
1:B:401:LYS:NZ	5:B:711:HOH:O	2.44	0.49
1:A:298:LYS:O	1:A:300:GLY:N	2.45	0.49
1:A:302:MET:N	1:A:302:MET:SD	2.86	0.49
1:A:114:GLU:HB3	1:A:121:LYS:HB3	1.93	0.49
1:A:152:LYS:NZ	5:A:732:HOH:O	2.45	0.49
1:B:378:GLU:HG3	1:B:441:ILE:HG12	1.94	0.49
1:B:461:ILE:HD12	1:B:461:ILE:H	1.78	0.49
1:A:182:LYS:HE2	1:A:182:LYS:HA	1.95	0.49
1:A:308:LEU:HD11	1:A:330:THR:HG22	1.94	0.49
1:A:477:ARG:NH1	5:A:775:HOH:O	2.45	0.48
1:B:298:LYS:O	1:B:300:GLY:N	2.47	0.48
1:B:224:LEU:H	1:B:224:LEU:HD12	1.78	0.48
1:A:160:GLU:HA	1:A:200:VAL:HG21	1.96	0.48
1:A:264:ARG:NH1	1:A:333:PRO:O	2.36	0.48
1:B:426:ILE:HD11	1:B:468:ASN:HB3	1.96	0.47
1:A:230:HIS:O	1:A:233:LYS:HG2	2.15	0.47
1:A:243:SER:OG	1:A:244:VAL:N	2.47	0.47
1:A:530:ILE:HA	1:A:531:PRO:HD3	1.76	0.46
1:B:207:THR:HA	1:B:213:PHE:HD1	1.81	0.46
1:A:320:ASP:O	1:A:401:LYS:HE2	2.16	0.45
1:A:315:LYS:NZ	5:A:863:HOH:O	2.50	0.45
1:A:358:GLN:OE1	1:A:362:LYS:HG2	2.16	0.45
1:A:396:ALA:N	5:A:855:HOH:O	2.34	0.45

*Continued on next page...*

*Continued from previous page...*

Atom-1	Atom-2	Interatomic distance (Å)	Clash overlap (Å)
1:B:207:THR:HG22	1:B:213:PHE:CE1	2.51	0.45
1:B:263:PRO:HB2	1:B:265:GLU:OE1	2.17	0.45
1:A:110:MET:HE2	1:A:122:ALA:HB3	1.99	0.45
1:A:191:ASP:OD2	1:A:192:TYR:N	2.46	0.44
1:B:322:LEU:HD22	1:B:402:ILE:HB	1.99	0.44
1:A:264:ARG:HG3	1:A:329:VAL:HG11	1.99	0.44
1:A:508:THR:HG22	5:A:834:HOH:O	2.18	0.44
1:B:530:ILE:HA	1:B:530:ILE:HD12	1.81	0.44
1:B:224:LEU:O	1:B:228:VAL:N	2.32	0.44
4:A:603:VSH:H24	4:A:603:VSH:C3	2.30	0.43
1:B:128:ARG:NH2	3:B:602:CL:CL	2.81	0.43
1:B:380:ARG:NH1	5:B:706:HOH:O	2.42	0.43
1:B:530:ILE:HA	1:B:531:PRO:HD3	1.95	0.42
1:A:308:LEU:CD1	1:A:330:THR:HG22	2.49	0.42
1:B:128:ARG:NE	5:B:710:HOH:O	2.51	0.42
1:B:240:GLN:HE21	1:B:240:GLN:HA	1.84	0.42
1:B:250:LYS:HG3	1:B:251:PRO:HD2	2.01	0.42
1:A:494:ILE:HD11	1:A:515:VAL:HG11	2.01	0.42
1:B:279:GLY:HA3	1:B:296:THR:O	2.19	0.42
1:A:208:LEU:HD12	1:A:208:LEU:HA	1.92	0.42
1:B:232:LYS:HG3	1:B:242:LEU:O	2.20	0.41
1:A:378:GLU:OE1	1:A:508:THR:OG1	2.38	0.41
1:A:216:SER:HB2	1:A:530:ILE:HG22	2.02	0.41
1:B:158:ASP:OD1	5:B:722:HOH:O	2.22	0.41
1:B:90:ALA:HA	1:B:138:VAL:HG12	2.02	0.41
1:B:490:GLU:O	1:B:494:ILE:HG12	2.21	0.41
1:B:283:MET:HG3	1:B:340:PHE:CE1	2.55	0.41
1:A:165:ALA:HA	1:A:166:PRO:HD2	1.67	0.41
1:B:149:TRP:HZ2	1:B:225:GLN:HG2	1.86	0.41
1:B:307:PHE:CE2	1:B:334:ILE:HG21	2.56	0.40
1:B:320:ASP:OD2	1:B:321:LYS:HE3	2.21	0.40
1:B:324:LYS:HE3	1:B:324:LYS:HB2	1.87	0.40
1:B:317:LEU:HD23	1:B:380:ARG:NH1	2.36	0.40
1:B:484:PRO:HG2	1:B:487:CYS:HB2	2.03	0.40
1:A:250:LYS:HA	1:A:251:PRO:HD3	1.95	0.40
1:B:349:PHE:O	1:B:355:GLY:HA3	2.22	0.40

There are no symmetry-related clashes.

## 5.3 Torsion angles [i](#)

### 5.3.1 Protein backbone [i](#)

In the following table, the Percentiles column shows the percent Ramachandran outliers of the chain as a percentile score with respect to all X-ray entries followed by that with respect to entries of similar resolution.

The Analysed column shows the number of residues for which the backbone conformation was analysed, and the total number of residues.

Mol	Chain	Analysed	Favoured	Allowed	Outliers	Percentiles	
1	A	430/454 (95%)	417 (97%)	11 (3%)	2 (0%)	29	39
1	B	430/454 (95%)	407 (95%)	17 (4%)	6 (1%)	11	14
All	All	860/908 (95%)	824 (96%)	28 (3%)	8 (1%)	17	23

All (8) Ramachandran outliers are listed below:

Mol	Chain	Res	Type
1	B	243	SER
1	B	302	MET
1	B	207	THR
1	B	233	LYS
1	B	435	ASN
1	B	299	PRO
1	A	299	PRO
1	A	166	PRO

### 5.3.2 Protein sidechains [i](#)

In the following table, the Percentiles column shows the percent sidechain outliers of the chain as a percentile score with respect to all X-ray entries followed by that with respect to entries of similar resolution.

The Analysed column shows the number of residues for which the sidechain conformation was analysed, and the total number of residues.

Mol	Chain	Analysed	Rotameric	Outliers	Percentiles	
1	A	381/393 (97%)	362 (95%)	19 (5%)	24	37
1	B	381/393 (97%)	358 (94%)	23 (6%)	19	28
All	All	762/786 (97%)	720 (94%)	42 (6%)	21	32

All (42) residues with a non-rotameric sidechain are listed below:

Mol	Chain	Res	Type
1	A	128	ARG
1	A	198	ASP
1	A	208	LEU
1	A	210	ASN
1	A	218	ARG
1	A	247	MET
1	A	252	GLN
1	A	257	LYS
1	A	288	LYS
1	A	302	MET
1	A	308	LEU
1	A	328	VAL
1	A	387	LEU
1	A	410	VAL
1	A	432	GLU
1	A	456	VAL
1	A	489	GLU
1	A	502	ARG
1	A	508	THR
1	B	92	TYR
1	B	95	GLU
1	B	114	GLU
1	B	128	ARG
1	B	145	GLU
1	B	193	ASP
1	B	196	GLN
1	B	208	LEU
1	B	218	ARG
1	B	220	THR
1	B	240	GLN
1	B	247	MET
1	B	249	SER
1	B	301	SER
1	B	328	VAL
1	B	330	THR
1	B	387	LEU
1	B	424	PHE
1	B	432	GLU
1	B	456	VAL
1	B	485	GLU
1	B	504	GLU
1	B	530	ILE

Some sidechains can be flipped to improve hydrogen bonding and reduce clashes. There are no

such sidechains identified.

### 5.3.3 RNA ⓘ

There are no RNA molecules in this entry.

## 5.4 Non-standard residues in protein, DNA, RNA chains ⓘ

2 non-standard protein/DNA/RNA residues are modelled in this entry.

In the following table, the Counts columns list the number of bonds (or angles) for which Mogul statistics could be retrieved, the number of bonds (or angles) that are observed in the model and the number of bonds (or angles) that are defined in the Chemical Component Dictionary. The Link column lists molecule types, if any, to which the group is linked. The Z score for a bond length (or angle) is the number of standard deviations the observed value is removed from the expected value. A bond length (or angle) with  $|Z| > 2$  is considered an outlier worth inspection. RMSZ is the root-mean-square of all Z scores of the bond lengths (or angles).

Mol	Type	Chain	Res	Link	Bond lengths			Bond angles		
					Counts	RMSZ	# $ Z  > 2$	Counts	RMSZ	# $ Z  > 2$
1	PTR	A	527	1,2	15,16,17	1.19	1 (6%)	19,22,24	0.65	0
1	PTR	B	527	1,2	15,16,17	1.26	1 (6%)	19,22,24	0.93	1 (5%)

In the following table, the Chirals column lists the number of chiral outliers, the number of chiral centers analysed, the number of these observed in the model and the number defined in the Chemical Component Dictionary. Similar counts are reported in the Torsion and Rings columns. '-' means no outliers of that kind were identified.

Mol	Type	Chain	Res	Link	Chirals	Torsions	Rings
1	PTR	A	527	1,2	-	1/10/11/13	0/1/1/1
1	PTR	B	527	1,2	-	0/10/11/13	0/1/1/1

All (2) bond length outliers are listed below:

Mol	Chain	Res	Type	Atoms	Z	Observed(Å)	Ideal(Å)
1	A	527	PTR	OH-CZ	-4.05	1.31	1.40
1	B	527	PTR	OH-CZ	-3.97	1.31	1.40

All (1) bond angle outliers are listed below:

Mol	Chain	Res	Type	Atoms	Z	Observed(°)	Ideal(°)
1	B	527	PTR	CB-CA-C	2.83	116.78	111.47

There are no chirality outliers.

All (1) torsion outliers are listed below:

Mol	Chain	Res	Type	Atoms
1	A	527	PTR	C-CA-CB-CG

There are no ring outliers.

No monomer is involved in short contacts.

## 5.5 Carbohydrates [i](#)

There are no carbohydrates in this entry.

## 5.6 Ligand geometry [i](#)

Of 8 ligands modelled in this entry, 6 are monoatomic - leaving 2 for Mogul analysis.

In the following table, the Counts columns list the number of bonds (or angles) for which Mogul statistics could be retrieved, the number of bonds (or angles) that are observed in the model and the number of bonds (or angles) that are defined in the Chemical Component Dictionary. The Link column lists molecule types, if any, to which the group is linked. The Z score for a bond length (or angle) is the number of standard deviations the observed value is removed from the expected value. A bond length (or angle) with  $|Z| > 2$  is considered an outlier worth inspection. RMSZ is the root-mean-square of all Z scores of the bond lengths (or angles).

Mol	Type	Chain	Res	Link	Bond lengths			Bond angles		
					Counts	RMSZ	$\# Z  > 2$	Counts	RMSZ	$\# Z  > 2$
4	VSH	B	603	-	29,31,31	1.49	3 (10%)	34,46,46	1.59	4 (11%)
4	VSH	A	603	-	29,31,31	1.50	3 (10%)	34,46,46	1.72	6 (17%)

In the following table, the Chirals column lists the number of chiral outliers, the number of chiral centers analysed, the number of these observed in the model and the number defined in the Chemical Component Dictionary. Similar counts are reported in the Torsion and Rings columns. '-' means no outliers of that kind were identified.

Mol	Type	Chain	Res	Link	Chirals	Torsions	Rings
4	VSH	B	603	-	-	7/19/19/19	0/3/3/3
4	VSH	A	603	-	-	7/19/19/19	0/3/3/3

All (6) bond length outliers are listed below:

Mol	Chain	Res	Type	Atoms	Z	Observed(Å)	Ideal(Å)
4	A	603	VSH	O29-C12	6.06	1.46	1.34
4	B	603	VSH	O29-C12	5.90	1.46	1.34
4	B	603	VSH	N23-N24	2.98	1.41	1.37
4	A	603	VSH	N23-N24	2.83	1.41	1.37
4	B	603	VSH	O29-C20	-2.46	1.43	1.48
4	A	603	VSH	O29-C20	-2.40	1.44	1.48

All (10) bond angle outliers are listed below:

Mol	Chain	Res	Type	Atoms	Z	Observed(°)	Ideal(°)
4	B	603	VSH	N21-C4-N22	-5.02	120.84	128.68
4	A	603	VSH	O29-C12-N26	4.89	118.24	108.63
4	A	603	VSH	N21-C4-N22	-4.84	121.11	128.68
4	B	603	VSH	O29-C12-N26	4.56	117.58	108.63
4	A	603	VSH	O29-C12-O27	-3.82	118.65	125.62
4	B	603	VSH	O29-C12-O27	-3.76	118.76	125.62
4	A	603	VSH	C20-O29-C12	2.89	125.44	120.99
4	A	603	VSH	C6-C9-N23	2.49	125.04	120.78
4	A	603	VSH	C9-N23-N24	2.12	106.86	105.17
4	B	603	VSH	C6-C9-N23	2.11	124.39	120.78

There are no chirality outliers.

All (14) torsion outliers are listed below:

Mol	Chain	Res	Type	Atoms
4	A	603	VSH	C3-C6-C9-N23
4	A	603	VSH	C1-C6-C9-N23
4	B	603	VSH	C3-C6-C9-N23
4	B	603	VSH	C1-C6-C9-N23
4	A	603	VSH	C17-C20-O29-C12
4	A	603	VSH	C16-C20-O29-C12
4	A	603	VSH	C15-C20-O29-C12
4	B	603	VSH	O27-C12-O29-C20
4	B	603	VSH	N26-C12-O29-C20
4	A	603	VSH	O27-C12-O29-C20
4	A	603	VSH	N26-C12-O29-C20
4	B	603	VSH	C17-C20-O29-C12
4	B	603	VSH	C15-C20-O29-C12
4	B	603	VSH	C16-C20-O29-C12

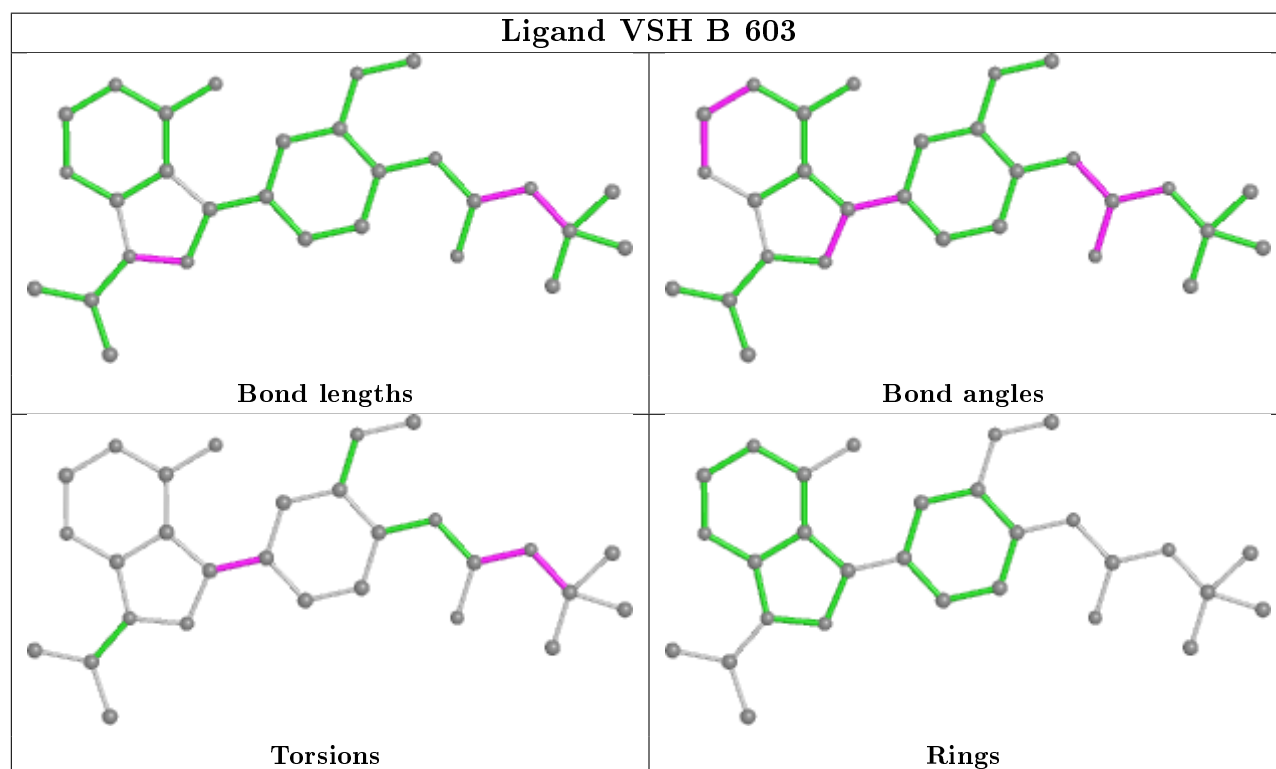
There are no ring outliers.

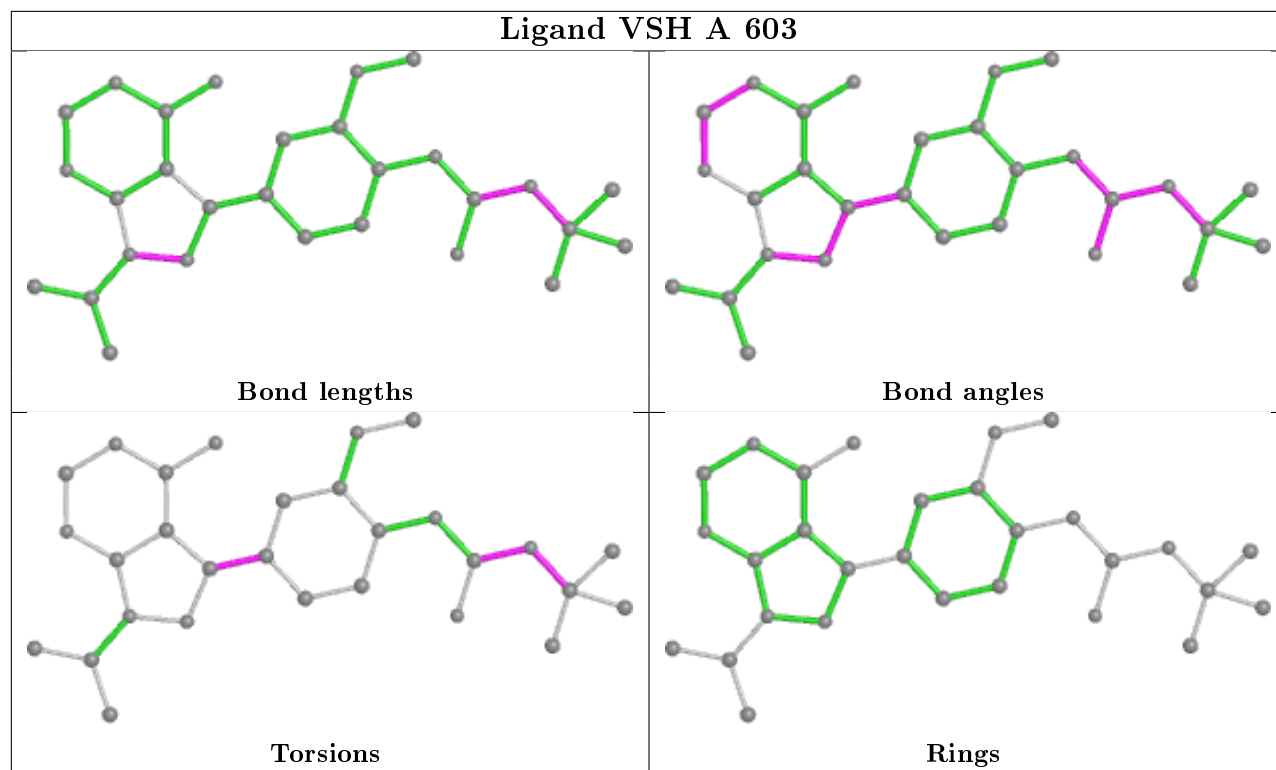
1 monomer is involved in 2 short contacts:



Mol	Chain	Res	Type	Clashes	Symm-Clashes
4	A	603	VSH	2	0

The following is a two-dimensional graphical depiction of Mogul quality analysis of bond lengths, bond angles, torsion angles, and ring geometry for all instances of the Ligand of Interest. In addition, ligands with molecular weight > 250 and outliers as shown on the validation Tables will also be included. For torsion angles, if less than 5% of the Mogul distribution of torsion angles is within 10 degrees of the torsion angle in question, then that torsion angle is considered an outlier. Any bond that is central to one or more torsion angles identified as an outlier by Mogul will be highlighted in the graph. For rings, the root-mean-square deviation (RMSD) between the ring in question and similar rings identified by Mogul is calculated over all ring torsion angles. If the average RMSD is greater than 60 degrees and the minimal RMSD between the ring in question and any Mogul-identified rings is also greater than 60 degrees, then that ring is considered an outlier. The outliers are highlighted in purple. The color gray indicates Mogul did not find sufficient equivalents in the CSD to analyse the geometry.





## 5.7 Other polymers [i](#)

There are no such residues in this entry.

## 5.8 Polymer linkage issues [i](#)

There are no chain breaks in this entry.

## 6 Fit of model and data ⓘ

### 6.1 Protein, DNA and RNA chains ⓘ

In the following table, the column labelled ‘#RSRZ> 2’ contains the number (and percentage) of RSRZ outliers, followed by percent RSRZ outliers for the chain as percentile scores relative to all X-ray entries and entries of similar resolution. The OWAB column contains the minimum, median, 95<sup>th</sup> percentile and maximum values of the occupancy-weighted average B-factor per residue. The column labelled ‘Q< 0.9’ lists the number of (and percentage) of residues with an average occupancy less than 0.9.

Mol	Chain	Analysed	<RSRZ>	#RSRZ>2	OWAB(Å <sup>2</sup> )	Q<0.9
1	A	434/454 (95%)	0.52	15 (3%) 44 47	39, 67, 99, 130	1 (0%)
1	B	434/454 (95%)	0.70	37 (8%) 10 12	44, 71, 112, 142	1 (0%)
All	All	868/908 (95%)	0.61	52 (5%) 21 24	39, 69, 107, 142	2 (0%)

All (52) RSRZ outliers are listed below:

Mol	Chain	Res	Type	RSRZ
1	B	213	PHE	7.5
1	A	211	GLY	5.8
1	B	208	LEU	5.4
1	B	209	ASP	5.4
1	B	215	ILE	5.2
1	A	302	MET	5.1
1	B	211	GLY	5.0
1	B	531	PRO	4.9
1	A	208	LEU	4.7
1	B	214	TYR	4.4
1	B	210	ASN	4.2
1	A	301	SER	4.1
1	A	210	ASN	4.1
1	A	209	ASP	4.0
1	B	530	ILE	3.9
1	B	227	LEU	3.8
1	B	205	ILE	3.5
1	B	185	TYR	3.4
1	B	222	SER	3.4
1	B	475	LEU	3.4
1	B	220	THR	3.4
1	B	434	ILE	3.3
1	B	216	SER	3.2
1	B	207	THR	3.1

*Continued on next page...*

*Continued from previous page...*

Mol	Chain	Res	Type	RSRZ
1	B	212	GLY	3.1
1	B	187	LEU	3.0
1	A	213	PHE	3.0
1	B	437	GLY	2.9
1	B	223	THR	2.9
1	B	233	LYS	2.8
1	B	244	VAL	2.8
1	B	144	LEU	2.8
1	B	86	ILE	2.8
1	B	436	PHE	2.7
1	A	502	ARG	2.6
1	B	219	SER	2.6
1	B	151	PHE	2.6
1	B	206	ARG	2.5
1	A	377	ILE	2.5
1	B	142	ASP	2.3
1	B	229	ASP	2.3
1	B	438	SER	2.3
1	B	231	TYR	2.2
1	A	471	VAL	2.2
1	A	86	ILE	2.2
1	A	142	ASP	2.2
1	A	305	GLU	2.1
1	B	228	VAL	2.1
1	A	322	LEU	2.1
1	B	111	VAL	2.1
1	A	224	LEU	2.1
1	B	139	ALA	2.1

## 6.2 Non-standard residues in protein, DNA, RNA chains [i](#)

In the following table, the Atoms column lists the number of modelled atoms in the group and the number defined in the chemical component dictionary. The B-factors column lists the minimum, median, 95<sup>th</sup> percentile and maximum values of B factors of atoms in the group. The column labelled 'Q< 0.9' lists the number of atoms with occupancy less than 0.9.

Mol	Type	Chain	Res	Atoms	RSCC	RSR	B-factors(Å <sup>2</sup> )	Q<0.9
1	PTR	B	527	16/17	0.97	0.15	62,68,76,80	0
1	PTR	A	527	16/17	0.98	0.14	42,58,67,71	0

## 6.3 Carbohydrates [i](#)

There are no carbohydrates in this entry.

## 6.4 Ligands [i](#)

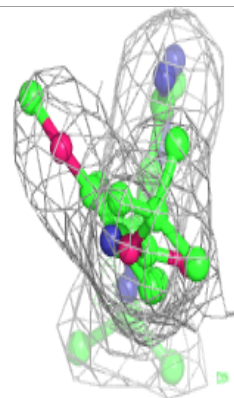
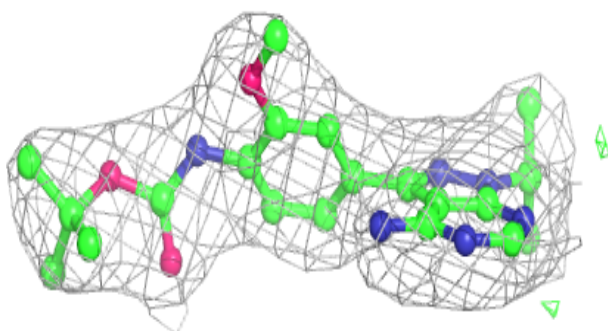
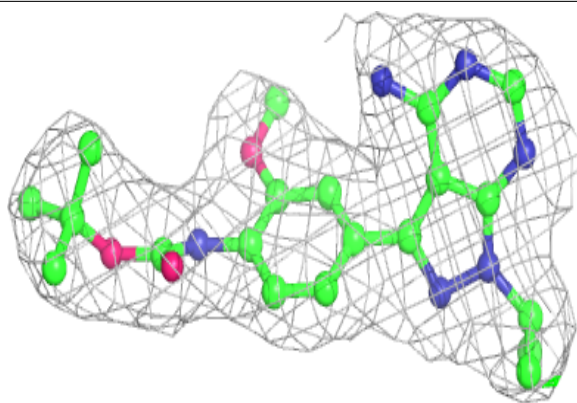
In the following table, the Atoms column lists the number of modelled atoms in the group and the number defined in the chemical component dictionary. The B-factors column lists the minimum, median, 95<sup>th</sup> percentile and maximum values of B factors of atoms in the group. The column labelled 'Q< 0.9' lists the number of atoms with occupancy less than 0.9.

Mol	Type	Chain	Res	Atoms	RSCC	RSR	B-factors(Å <sup>2</sup> )	Q<0.9
2	CA	B	604	1/1	0.75	0.28	84,84,84,84	0
3	CL	B	602	1/1	0.85	0.15	85,85,85,85	0
2	CA	A	601	1/1	0.86	0.29	66,66,66,66	0
3	CL	A	602	1/1	0.92	0.10	72,72,72,72	0
2	CA	A	604	1/1	0.93	0.40	102,102,102,102	0
4	VSH	B	603	29/29	0.97	0.17	44,53,61,66	0
2	CA	B	601	1/1	0.97	0.49	106,106,106,106	0
4	VSH	A	603	29/29	0.98	0.17	35,51,64,68	0

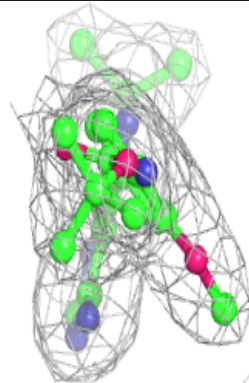
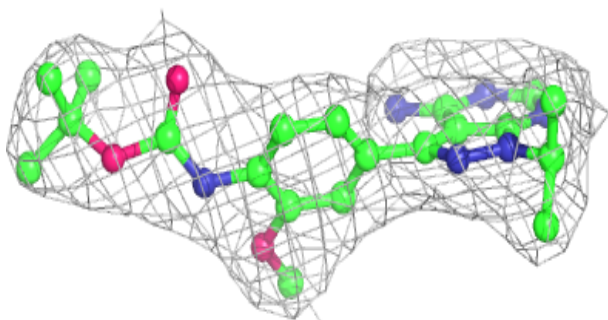
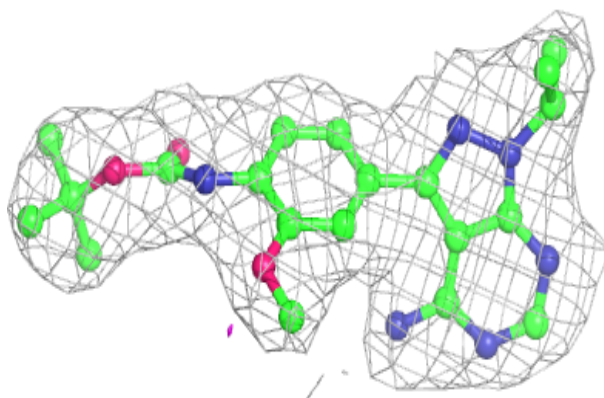
The following is a graphical depiction of the model fit to experimental electron density of all instances of the Ligand of Interest. In addition, ligands with molecular weight > 250 and outliers as shown on the geometry validation Tables will also be included. Each fit is shown from different orientation to approximate a three-dimensional view.

**Electron density around VSH B 603:**

$2mF_o-DF_c$  (at 0.7 rmsd) in gray  
 $mF_o-DF_c$  (at 3 rmsd) in purple (negative)  
and green (positive)

**Electron density around VSH A 603:**

$2mF_o-DF_c$  (at 0.7 rmsd) in gray  
 $mF_o-DF_c$  (at 3 rmsd) in purple (negative)  
and green (positive)



## 6.5 Other polymers

There are no such residues in this entry.