



Full wwPDB X-ray Structure Validation Report ⓘ

Aug 21, 2020 – 12:24 PM BST

PDB ID : 3VSJ
Title : Crystal structure of 1,6-APD (2-ANIMOPHENOL-1,6-DIOXYGENASE)
complexed with intermediate products
Authors : Li, D.F.; Hou, Y.J.; Hu, Y.; Wang, D.C.; Liu, W.
Deposited on : 2012-04-25
Resolution : 2.30 Å(reported)

This is a Full wwPDB X-ray Structure Validation Report for a publicly released PDB entry.

We welcome your comments at validation@mail.wwpdb.org

A user guide is available at

<https://www.wwpdb.org/validation/2017/XrayValidationReportHelp>

with specific help available everywhere you see the ⓘ symbol.

The following versions of software and data (see [references ⓘ](#)) were used in the production of this report:

MolProbity : 4.02b-467
Mogul : 1.8.5 (274361), CSD as541be (2020)
Xtriage (Phenix) : 1.13
EDS : 2.13.1
Percentile statistics : 20191225.v01 (using entries in the PDB archive December 25th 2019)
Refmac : 5.8.0158
CCP4 : 7.0.044 (Gargrove)
Ideal geometry (proteins) : Engh & Huber (2001)
Ideal geometry (DNA, RNA) : Parkinson et al. (1996)
Validation Pipeline (wwPDB-VP) : 2.13.1

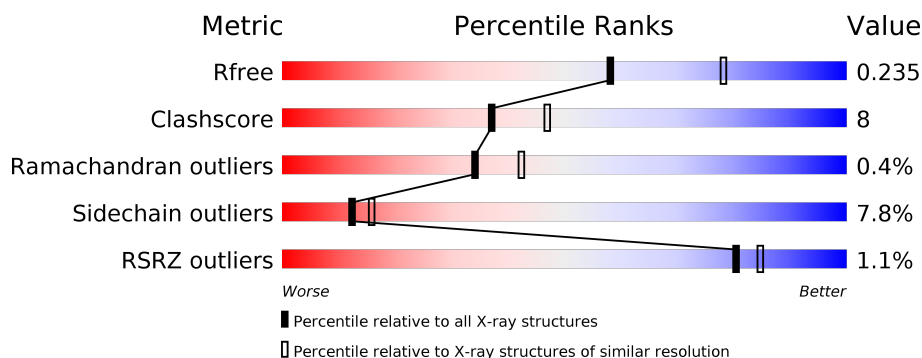
1 Overall quality at a glance

The following experimental techniques were used to determine the structure:

X-RAY DIFFRACTION

The reported resolution of this entry is 2.30 Å.

Percentile scores (ranging between 0-100) for global validation metrics of the entry are shown in the following graphic. The table shows the number of entries on which the scores are based.



Metric	Whole archive (#Entries)	Similar resolution (#Entries, resolution range(Å))
R_{free}	130704	5042 (2.30-2.30)
Clashscore	141614	5643 (2.30-2.30)
Ramachandran outliers	138981	5575 (2.30-2.30)
Sidechain outliers	138945	5575 (2.30-2.30)
RSRZ outliers	127900	4938 (2.30-2.30)

The table below summarises the geometric issues observed across the polymeric chains and their fit to the electron density. The red, orange, yellow and green segments on the lower bar indicate the fraction of residues that contain outliers for ≥ 3 , 2, 1 and 0 types of geometric quality criteria respectively. A grey segment represents the fraction of residues that are not modelled. The numeric value for each fraction is indicated below the corresponding segment, with a dot representing fractions $\leq 5\%$. The upper red bar (where present) indicates the fraction of residues that have poor fit to the electron density. The numeric value is given above the bar.

Mol	Chain	Length	Quality of chain
1	A	271	<div> <div>80%</div> <div>16%</div> <div>.</div> </div>
1	C	271	<div> <div>%</div> <div>82%</div> <div>14%</div> <div>.</div> </div>
2	B	312	<div> <div>82%</div> <div>13%</div> <div>.</div> </div>
2	D	312	<div> <div>3%</div> <div>77%</div> <div>15%</div> <div>.</div> </div>

The following table lists non-polymeric compounds, carbohydrate monomers and non-standard residues in protein, DNA, RNA chains that are outliers for geometric or electron-density-fit crite-

ria:

Mol	Type	Chain	Res	Chirality	Geometry	Clashes	Electron density
5	2XP	B	402	-	-	-	X

2 Entry composition [i](#)

There are 8 unique types of molecules in this entry. The entry contains 9950 atoms, of which 0 are hydrogens and 0 are deuteriums.

In the tables below, the ZeroOcc column contains the number of atoms modelled with zero occupancy, the AltConf column contains the number of residues with at least one atom in alternate conformation and the Trace column contains the number of residues modelled with at most 2 atoms.

- Molecule 1 is a protein called 2-amino-5-chlorophenol 1,6-dioxygenase alpha subunit.

Mol	Chain	Residues	Atoms					ZeroOcc	AltConf	Trace
1	A	270	Total	C	N	O	S	0	0	0
			2056	1303	358	389	6			
1	C	270	Total	C	N	O	S	0	0	0
			2056	1303	358	389	6			

- Molecule 2 is a protein called 2-amino-5-chlorophenol 1,6-dioxygenase beta subunit.

Mol	Chain	Residues	Atoms					ZeroOcc	AltConf	Trace
2	B	303	Total	C	N	O	S	0	0	0
			2401	1536	413	437	15			
2	D	299	Total	C	N	O	S	0	0	0
			2379	1524	409	431	15			

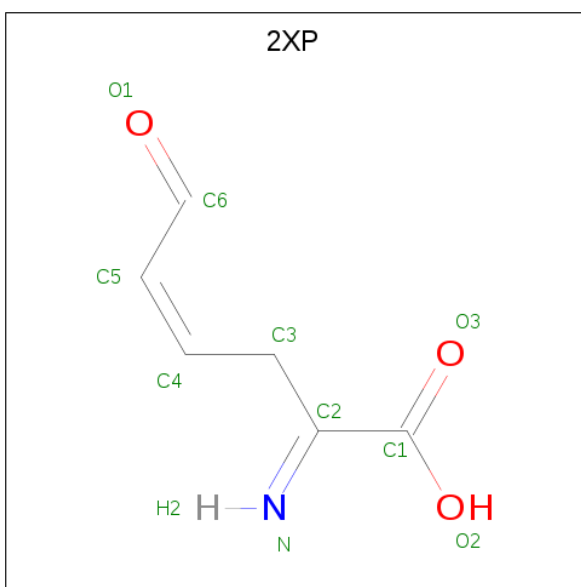
- Molecule 3 is CHLORIDE ION (three-letter code: CL) (formula: Cl).

Mol	Chain	Residues	Atoms		ZeroOcc	AltConf
3	A	1	Total	Cl	0	0
			1	1		

- Molecule 4 is FE (II) ION (three-letter code: FE2) (formula: Fe).

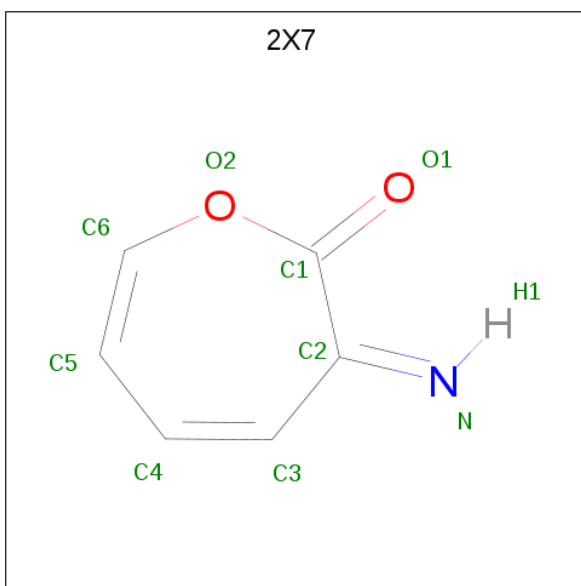
Mol	Chain	Residues	Atoms		ZeroOcc	AltConf
4	B	1	Total	Fe	0	0
			1	1		
4	D	1	Total	Fe	0	0
			1	1		

- Molecule 5 is (2Z,4Z)-2-imino-6-oxohex-4-enoic acid (three-letter code: 2XP) (formula: C₆H₇NO₃).



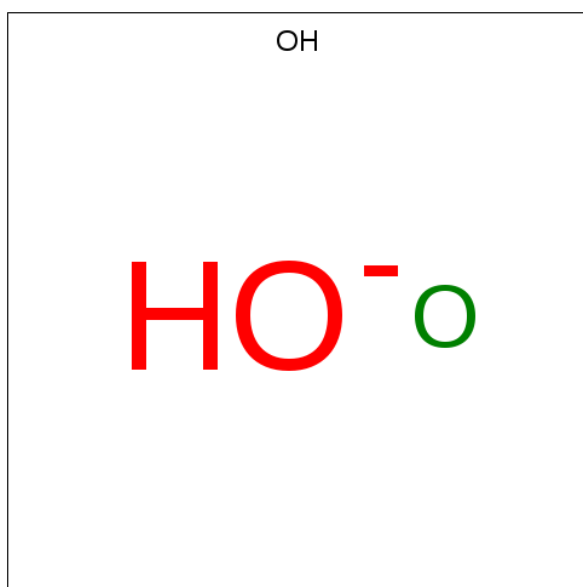
Mol	Chain	Residues	Atoms				ZeroOcc	AltConf
5	B	1	Total	C	N	O	0	0
			10	6	1	3		

- Molecule 6 is (3E)-3-iminooxepin-2(3H)-one (three-letter code: 2X7) (formula: $C_6H_5NO_2$).



Mol	Chain	Residues	Atoms				ZeroOcc	AltConf
6	D	1	Total	C	N	O	0	0
			9	6	1	2		

- Molecule 7 is HYDROXIDE ION (three-letter code: OH) (formula: HO).



Mol	Chain	Residues	Atoms	ZeroOcc	AltConf
7	D	1	Total O 1 1	0	0

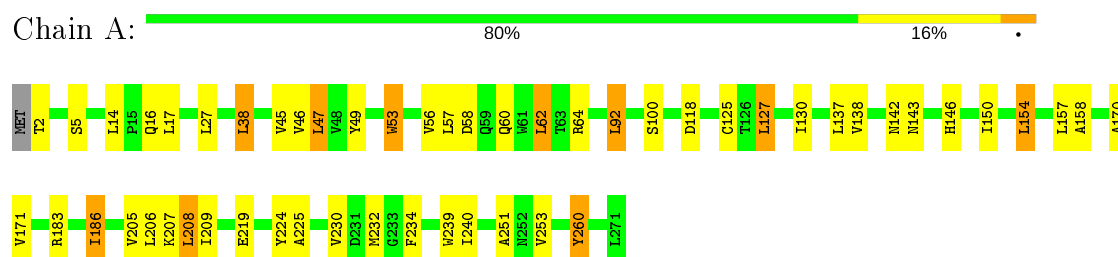
- Molecule 8 is water.

Mol	Chain	Residues	Atoms	ZeroOcc	AltConf
8	A	316	Total O 316 316	0	0
8	B	222	Total O 222 222	0	0
8	C	261	Total O 261 261	0	0
8	D	236	Total O 236 236	0	0

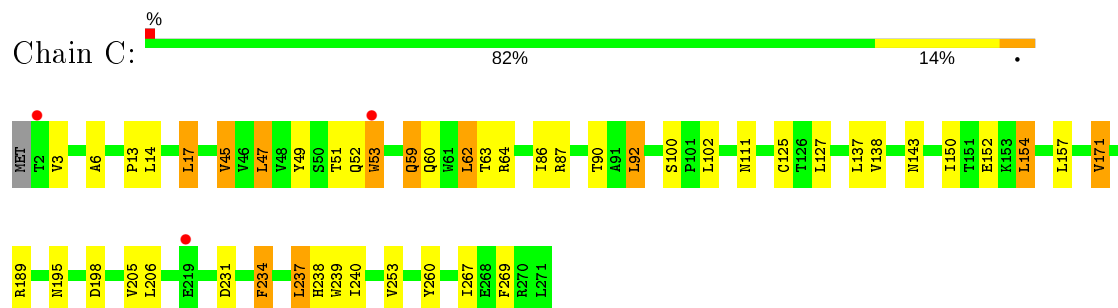
3 Residue-property plots

These plots are drawn for all protein, RNA, DNA and oligosaccharide chains in the entry. The first graphic for a chain summarises the proportions of the various outlier classes displayed in the second graphic. The second graphic shows the sequence view annotated by issues in geometry and electron density. Residues are color-coded according to the number of geometric quality criteria for which they contain at least one outlier: green = 0, yellow = 1, orange = 2 and red = 3 or more. A red dot above a residue indicates a poor fit to the electron density ($RSRZ > 2$). Stretches of 2 or more consecutive residues without any outlier are shown as a green connector. Residues present in the sample, but not in the model, are shown in grey.

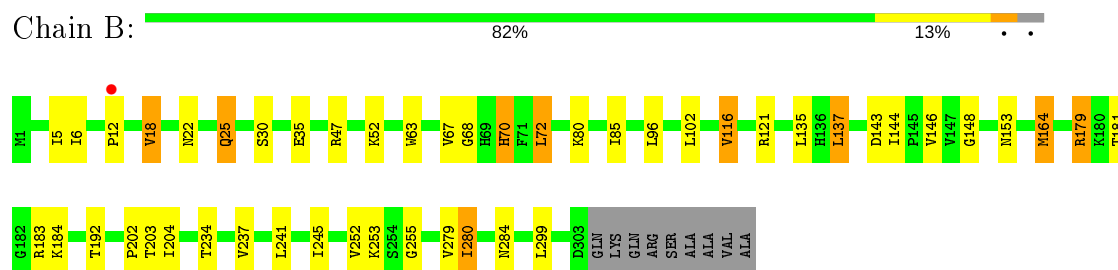
- Molecule 1: 2-amino-5-chlorophenol 1,6-dioxygenase alpha subunit



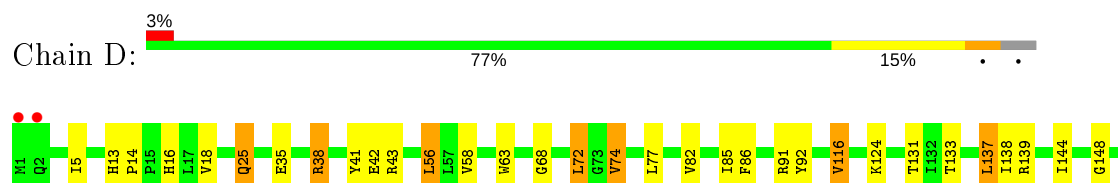
- Molecule 1: 2-amino-5-chlorophenol 1,6-dioxygenase alpha subunit

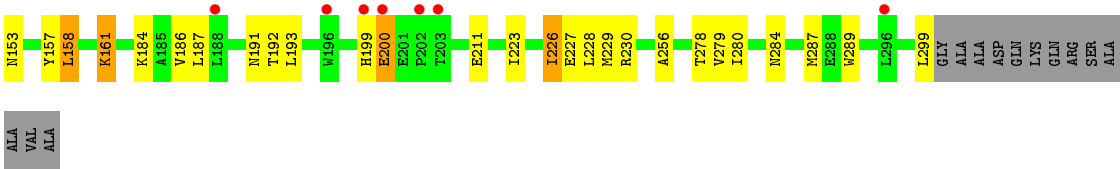


- Molecule 2: 2-amino-5-chlorophenol 1,6-dioxygenase beta subunit



- Molecule 2: 2-amino-5-chlorophenol 1,6-dioxygenase beta subunit





4 Data and refinement statistics

Property	Value	Source
Space group	C 1 2 1	Depositor
Cell constants a, b, c, α , β , γ	270.24Å 48.39Å 108.55Å 90.00° 109.57° 90.00°	Depositor
Resolution (Å)	39.87 – 2.30 36.79 – 2.30	Depositor EDS
% Data completeness (in resolution range)	97.8 (39.87-2.30) 97.8 (36.79-2.30)	Depositor EDS
R_{merge}	0.11	Depositor
R_{sym}	0.11	Depositor
$\langle I/\sigma(I) \rangle$ ¹	2.32 (at 2.29Å)	Xtriage
Refinement program	REFMAC 5.5.0102	Depositor
R, R_{free}	0.190 , 0.234 0.191 , 0.235	Depositor DCC
R_{free} test set	2947 reflections (5.06%)	wwPDB-VP
Wilson B-factor (Å ²)	24.7	Xtriage
Anisotropy	0.031	Xtriage
Bulk solvent k_{sol} (e/Å ³), B_{sol} (Å ²)	0.35 , 47.0	EDS
L-test for twinning ²	$\langle L \rangle = 0.48$, $\langle L^2 \rangle = 0.31$	Xtriage
Estimated twinning fraction	No twinning to report.	Xtriage
F_o, F_c correlation	0.94	EDS
Total number of atoms	9950	wwPDB-VP
Average B, all atoms (Å ²)	26.0	wwPDB-VP

Xtriage's analysis on translational NCS is as follows: *The largest off-origin peak in the Patterson function is 4.39% of the height of the origin peak. No significant pseudotranslation is detected.*

¹Intensities estimated from amplitudes.

²Theoretical values of $\langle |L| \rangle$, $\langle L^2 \rangle$ for acentric reflections are 0.5, 0.333 respectively for untwinned datasets, and 0.375, 0.2 for perfectly twinned datasets.

5 Model quality [i](#)

5.1 Standard geometry [i](#)

Bond lengths and bond angles in the following residue types are not validated in this section: 2XP, CL, FE2, 2X7, OH

The Z score for a bond length (or angle) is the number of standard deviations the observed value is removed from the expected value. A bond length (or angle) with $|Z| > 5$ is considered an outlier worth inspection. RMSZ is the root-mean-square of all Z scores of the bond lengths (or angles).

Mol	Chain	Bond lengths		Bond angles	
		RMSZ	$\# Z > 5$	RMSZ	$\# Z > 5$
1	A	0.34	0/2102	0.55	0/2860
1	C	0.33	0/2102	0.53	0/2860
2	B	0.33	0/2469	0.50	0/3352
2	D	0.33	0/2447	0.53	0/3322
All	All	0.33	0/9120	0.53	0/12394

There are no bond length outliers.

There are no bond angle outliers.

There are no chirality outliers.

There are no planarity outliers.

5.2 Too-close contacts [i](#)

In the following table, the Non-H and H(model) columns list the number of non-hydrogen atoms and hydrogen atoms in the chain respectively. The H(added) column lists the number of hydrogen atoms added and optimized by MolProbity. The Clashes column lists the number of clashes within the asymmetric unit, whereas Symm-Clashes lists symmetry related clashes.

Mol	Chain	Non-H	H(model)	H(added)	Clashes	Symm-Clashes
1	A	2056	0	2027	32	0
1	C	2056	0	2027	33	0
2	B	2401	0	2351	34	0
2	D	2379	0	2334	39	0
3	A	1	0	0	0	0
4	B	1	0	0	0	0
4	D	1	0	0	0	0
5	B	10	0	5	3	0
6	D	9	0	4	3	0

Continued on next page...

Continued from previous page...

Mol	Chain	Non-H	H(model)	H(added)	Clashes	Symm-Clashes
7	D	1	0	0	0	0
8	A	316	0	0	4	0
8	B	222	0	0	4	0
8	C	261	0	0	6	0
8	D	236	0	0	3	0
All	All	9950	0	8748	137	0

The all-atom clashscore is defined as the number of clashes found per 1000 atoms (including hydrogen atoms). The all-atom clashscore for this structure is 8.

All (137) close contacts within the same asymmetric unit are listed below, sorted by their clash magnitude.

Atom-1	Atom-2	Interatomic distance (Å)	Clash overlap (Å)
5:B:402:2XP:C1	5:B:402:2XP:O1	2.08	1.02
1:C:51:THR:HG21	1:C:231:ASP:OD1	1.85	0.76
1:C:51:THR:HG22	8:C:302:HOH:O	1.87	0.75
2:D:211:GLU:OE2	2:D:278:THR:HG22	1.87	0.72
1:C:47:LEU:HD22	1:C:239:TRP:HZ2	1.58	0.69
1:C:234:PHE:CE1	1:C:237:LEU:HD12	2.28	0.69
1:C:100:SER:HA	1:C:157:LEU:HD11	1.73	0.69
2:D:72:LEU:HD22	2:D:148:GLY:HA3	1.74	0.68
2:B:22:ASN:HD21	2:B:30:SER:H	1.41	0.68
2:B:192:THR:HG21	5:B:402:2XP:H3	1.75	0.68
2:D:25:GLN:HG3	2:D:92:TYR:CZ	2.29	0.67
2:B:72:LEU:HD22	2:B:148:GLY:HA3	1.77	0.66
1:A:16:GLN:HB2	1:A:127:LEU:HD21	1.78	0.65
2:D:68:GLY:HA3	2:D:116:VAL:HG22	1.79	0.64
2:D:5:ILE:HD11	2:D:187:LEU:HD11	1.79	0.63
1:A:46:VAL:HG11	1:A:130:ILE:HD12	1.80	0.62
1:A:100:SER:HA	1:A:157:LEU:HD11	1.81	0.62
1:A:253:VAL:HG12	8:A:522:HOH:O	1.99	0.61
1:C:253:VAL:HG22	1:C:267:ILE:HD12	1.83	0.60
2:D:199:HIS:O	2:D:200:GLU:HB2	2.01	0.60
2:B:280:ILE:HG22	2:B:280:ILE:O	2.02	0.59
1:C:51:THR:HG23	1:C:52:GLN:HG3	1.83	0.59
2:B:63:TRP:CZ3	2:B:72:LEU:HD13	2.38	0.58
1:A:47:LEU:HD22	1:A:239:TRP:HZ2	1.68	0.57
2:B:241:LEU:O	2:B:245:ILE:HG12	2.04	0.57
2:D:5:ILE:HD11	2:D:187:LEU:CD1	2.33	0.57
1:A:92:LEU:HD13	1:A:138:VAL:HG21	1.86	0.57
2:B:25:GLN:HE21	2:B:25:GLN:H	1.53	0.56

Continued on next page...

Continued from previous page...

Atom-1	Atom-2	Interatomic distance (Å)	Clash overlap (Å)
1:C:13:PRO:HB2	1:C:17:LEU:HD22	1.87	0.56
2:D:16:HIS:CE1	2:D:280:ILE:HD11	2.40	0.56
1:A:253:VAL:HG11	8:A:405:HOH:O	2.06	0.56
1:A:208:LEU:HD13	8:A:499:HOH:O	2.05	0.56
1:A:38:LEU:HD22	1:A:170:ALA:HB1	1.88	0.56
1:A:205:VAL:HG21	1:A:224:TYR:CE2	2.41	0.55
2:B:245:ILE:HD11	2:B:252:VAL:HG23	1.88	0.55
2:D:229:MET:HE1	2:D:287:MET:SD	2.47	0.54
1:C:92:LEU:HD13	1:C:138:VAL:HG21	1.90	0.54
1:C:171:VAL:HG23	1:C:240:ILE:HD12	1.89	0.54
2:D:157:TYR:HD2	2:D:158:LEU:HD13	1.72	0.54
2:D:229:MET:HE3	2:D:289:TRP:HH2	1.73	0.54
1:C:195:ASN:ND2	1:C:198:ASP:H	2.06	0.53
1:A:125:CYS:SG	1:A:137:LEU:HD11	2.48	0.53
2:B:68:GLY:HA3	2:B:116:VAL:HG22	1.90	0.53
1:A:142:ASN:ND2	1:A:232:MET:HG2	2.23	0.53
2:D:91:ARG:NH2	8:D:662:HOH:O	2.40	0.53
1:A:171:VAL:HG22	1:A:240:ILE:HD13	1.91	0.53
1:C:87:ARG:NH1	8:C:381:HOH:O	2.41	0.53
1:A:53:TRP:CZ3	1:A:60:GLN:OE1	2.62	0.52
1:A:53:TRP:HZ3	1:A:60:GLN:OE1	1.91	0.52
2:D:5:ILE:CD1	2:D:187:LEU:HD11	2.39	0.52
1:C:3:VAL:HG12	8:C:363:HOH:O	2.10	0.52
2:D:229:MET:CE	2:D:287:MET:SD	2.98	0.51
2:D:5:ILE:HG22	2:D:299:LEU:HD21	1.92	0.51
1:C:63:THR:O	1:C:90:THR:HG22	2.11	0.51
2:D:56:LEU:HD13	2:D:144:ILE:HG21	1.93	0.51
1:A:186:ILE:HD13	1:A:260:TYR:CZ	2.46	0.51
2:B:6:ILE:HD11	2:B:184:LYS:HB3	1.93	0.51
2:B:245:ILE:HD12	2:B:253:LYS:HB2	1.93	0.51
1:A:49:TYR:HB2	1:A:239:TRP:CD2	2.45	0.51
2:B:234:THR:O	2:B:237:VAL:HG22	2.10	0.51
1:C:49:TYR:HB2	1:C:239:TRP:CD2	2.46	0.51
2:B:18:VAL:HG12	2:B:137:LEU:CD1	2.41	0.50
1:C:45:VAL:HG21	1:C:92:LEU:HD12	1.94	0.50
1:C:53:TRP:HZ3	1:C:60:GLN:OE1	1.95	0.50
2:B:164:MET:HE1	8:B:516:HOH:O	2.12	0.49
2:D:192:THR:HG21	6:D:402:2X7:N	2.28	0.48
1:A:47:LEU:HD11	1:A:158:ALA:HB3	1.95	0.48
2:B:18:VAL:HG12	2:B:137:LEU:HD11	1.94	0.48
5:B:402:2XP:O1	5:B:402:2XP:O2	2.27	0.47

Continued on next page...

Continued from previous page...

Atom-1	Atom-2	Interatomic distance (Å)	Clash overlap (Å)
1:C:86:ILE:HD12	1:C:125:CYS:SG	2.54	0.47
1:A:171:VAL:HG22	1:A:240:ILE:CD1	2.45	0.47
2:B:164:MET:CE	2:B:255:GLY:HA2	2.44	0.47
1:C:125:CYS:SG	1:C:137:LEU:HD11	2.54	0.47
1:C:53:TRP:CZ3	1:C:60:GLN:OE1	2.68	0.47
2:D:58:VAL:HG11	2:D:131:THR:HG23	1.95	0.47
2:D:63:TRP:CZ3	2:D:72:LEU:HD13	2.50	0.47
2:D:280:ILE:O	2:D:280:ILE:HG22	2.15	0.47
2:B:143:ASP:C	2:B:144:ILE:HD13	2.35	0.47
1:C:157:LEU:C	1:C:157:LEU:HD23	2.35	0.47
1:C:47:LEU:HD22	1:C:239:TRP:CZ2	2.45	0.47
1:A:157:LEU:C	1:A:157:LEU:HD23	2.35	0.46
2:B:202:PRO:O	2:B:204:ILE:N	2.47	0.46
1:C:150:ILE:O	1:C:154:LEU:HD22	2.14	0.46
1:C:152:GLU:HG2	1:C:238:HIS:O	2.15	0.46
2:D:138:ILE:HD12	2:D:139:ARG:N	2.31	0.46
2:B:135:LEU:HD11	2:B:146:VAL:HG21	1.97	0.46
1:C:64:ARG:NE	8:C:387:HOH:O	2.45	0.46
2:B:245:ILE:CD1	2:B:252:VAL:HG23	2.44	0.46
2:D:86:PHE:CZ	2:D:280:ILE:CD1	2.99	0.46
2:D:192:THR:CG2	6:D:402:2X7:N	2.80	0.45
2:D:226:ILE:HA	2:D:229:MET:HG2	1.97	0.45
1:C:6:ALA:HA	1:C:171:VAL:HG22	1.98	0.45
2:B:35:GLU:HG3	2:D:223:ILE:HD12	1.97	0.45
2:D:133:THR:HG22	2:D:137:LEU:HD22	1.98	0.45
1:A:143:ASN:HB3	1:A:146:HIS:CD2	2.52	0.45
2:B:192:THR:HG22	2:B:284:ASN:ND2	2.32	0.45
2:B:181:THR:HG22	2:B:183:ARG:NH1	2.32	0.45
2:D:229:MET:HE3	2:D:289:TRP:CH2	2.52	0.43
1:C:3:VAL:HG13	8:C:389:HOH:O	2.17	0.43
1:A:209:ILE:HG22	1:A:251:ALA:HB3	1.99	0.43
2:D:192:THR:HG22	2:D:284:ASN:ND2	2.33	0.43
1:A:225:ALA:HA	1:A:230:VAL:HB	1.99	0.43
2:B:102:LEU:HD22	2:B:183:ARG:HG3	2.01	0.43
1:A:142:ASN:HD21	1:A:232:MET:CG	2.31	0.43
1:A:47:LEU:HD22	1:A:239:TRP:CZ2	2.50	0.43
1:A:62:LEU:HD22	1:A:64:ARG:H	1.83	0.43
1:C:6:ALA:CB	1:C:171:VAL:HG22	2.48	0.43
2:D:35:GLU:HA	2:D:38:ARG:HB2	2.01	0.43
1:C:189:ARG:NH1	8:C:415:HOH:O	2.52	0.42
2:B:164:MET:HE3	2:B:255:GLY:HA2	2.02	0.42

Continued on next page...

Continued from previous page...

Atom-1	Atom-2	Interatomic distance (Å)	Clash overlap (Å)
1:A:56:VAL:HG22	2:B:85:ILE:HD12	2.02	0.42
1:C:59:GLN:HE21	1:C:143:ASN:HB2	1.85	0.42
2:B:67:VAL:O	2:B:70:HIS:HE1	2.03	0.42
1:C:62:LEU:HD23	1:C:64:ARG:H	1.85	0.42
2:D:191:ASN:ND2	2:D:256:ALA:HB3	2.35	0.42
2:D:38:ARG:O	2:D:42:GLU:HG2	2.20	0.42
1:A:53:TRP:HD1	1:A:118:ASP:OD1	2.02	0.42
2:D:43:ARG:NH1	8:D:585:HOH:O	2.53	0.42
1:A:150:ILE:O	1:A:154:LEU:HD22	2.19	0.41
2:D:74:VAL:HG22	2:D:77:LEU:HG	2.02	0.41
2:B:245:ILE:HG23	2:B:253:LYS:HB2	2.02	0.41
1:C:6:ALA:HB3	1:C:269:PHE:HB2	2.03	0.41
1:A:2:THR:N	8:A:533:HOH:O	2.54	0.41
2:D:161:LYS:H	2:D:161:LYS:CD	2.34	0.41
2:B:12:PRO:HB2	2:B:284:ASN:HD22	1.86	0.41
2:D:5:ILE:HG23	2:D:5:ILE:O	2.21	0.41
2:B:179:ARG:NH2	8:B:519:HOH:O	2.54	0.41
2:D:82:VAL:HG22	2:D:91:ARG:HG2	2.03	0.41
1:A:183:ARG:O	2:B:116:VAL:HG11	2.21	0.40
2:B:192:THR:HG23	8:B:501:HOH:O	2.21	0.40
2:D:13:HIS:N	2:D:14:PRO:CD	2.85	0.40
2:D:230:ARG:NH2	8:D:674:HOH:O	2.53	0.40
2:B:5:ILE:HG13	2:B:299:LEU:HD11	2.03	0.40
2:B:80:LYS:NZ	8:B:656:HOH:O	2.55	0.40
1:C:49:TYR:HB2	1:C:239:TRP:CE2	2.56	0.40
2:D:280:ILE:HD12	6:D:402:2X7:H4	2.03	0.40
1:A:209:ILE:HG22	1:A:251:ALA:CB	2.51	0.40

There are no symmetry-related clashes.

5.3 Torsion angles ⓘ

5.3.1 Protein backbone ⓘ

In the following table, the Percentiles column shows the percent Ramachandran outliers of the chain as a percentile score with respect to all X-ray entries followed by that with respect to entries of similar resolution.

The Analysed column shows the number of residues for which the backbone conformation was analysed, and the total number of residues.

Mol	Chain	Analysed	Favoured	Allowed	Outliers	Percentiles	
1	A	268/271 (99%)	261 (97%)	6 (2%)	1 (0%)	34	42
1	C	268/271 (99%)	258 (96%)	10 (4%)	0	100	100
2	B	301/312 (96%)	291 (97%)	8 (3%)	2 (1%)	22	26
2	D	297/312 (95%)	284 (96%)	11 (4%)	2 (1%)	22	26
All	All	1134/1166 (97%)	1094 (96%)	35 (3%)	5 (0%)	34	42

All (5) Ramachandran outliers are listed below:

Mol	Chain	Res	Type
2	D	200	GLU
2	B	203	THR
1	A	57	LEU
2	D	193	LEU
2	B	280	ILE

5.3.2 Protein sidechains ⓘ

In the following table, the Percentiles column shows the percent sidechain outliers of the chain as a percentile score with respect to all X-ray entries followed by that with respect to entries of similar resolution.

The Analysed column shows the number of residues for which the sidechain conformation was analysed, and the total number of residues.

Mol	Chain	Analysed	Rotameric	Outliers	Percentiles	
1	A	212/213 (100%)	192 (91%)	20 (9%)	8	10
1	C	212/213 (100%)	194 (92%)	18 (8%)	10	13
2	B	252/258 (98%)	238 (94%)	14 (6%)	21	29
2	D	251/258 (97%)	231 (92%)	20 (8%)	12	15
All	All	927/942 (98%)	855 (92%)	72 (8%)	12	16

All (72) residues with a non-rotameric sidechain are listed below:

Mol	Chain	Res	Type
1	A	5	SER
1	A	14	LEU
1	A	17	LEU
1	A	27	LEU
1	A	38	LEU
1	A	45	VAL

Continued on next page...

Continued from previous page...

Mol	Chain	Res	Type
1	A	47	LEU
1	A	53	TRP
1	A	58	ASP
1	A	62	LEU
1	A	92	LEU
1	A	127	LEU
1	A	154	LEU
1	A	186	ILE
1	A	206	LEU
1	A	207	LYS
1	A	208	LEU
1	A	219	GLU
1	A	234	PHE
1	A	260	TYR
2	B	18	VAL
2	B	25	GLN
2	B	47	ARG
2	B	52	LYS
2	B	70	HIS
2	B	72	LEU
2	B	96	LEU
2	B	116	VAL
2	B	121	ARG
2	B	137	LEU
2	B	153	ASN
2	B	164	MET
2	B	179	ARG
2	B	279	VAL
1	C	14	LEU
1	C	17	LEU
1	C	45	VAL
1	C	47	LEU
1	C	53	TRP
1	C	59	GLN
1	C	62	LEU
1	C	92	LEU
1	C	102	LEU
1	C	111	ASN
1	C	127	LEU
1	C	154	LEU
1	C	171	VAL
1	C	205	VAL

Continued on next page...

Continued from previous page...

Mol	Chain	Res	Type
1	C	206	LEU
1	C	234	PHE
1	C	237	LEU
1	C	260	TYR
2	D	18	VAL
2	D	25	GLN
2	D	38	ARG
2	D	41	TYR
2	D	56	LEU
2	D	72	LEU
2	D	74	VAL
2	D	85	ILE
2	D	116	VAL
2	D	124	LYS
2	D	137	LEU
2	D	153	ASN
2	D	158	LEU
2	D	161	LYS
2	D	184	LYS
2	D	186	VAL
2	D	226	ILE
2	D	227	GLU
2	D	228	LEU
2	D	279	VAL

Some sidechains can be flipped to improve hydrogen bonding and reduce clashes. All (24) such sidechains are listed below:

Mol	Chain	Res	Type
1	A	52	GLN
1	A	59	GLN
1	A	71	HIS
1	A	146	HIS
2	B	2	GLN
2	B	22	ASN
2	B	25	GLN
2	B	26	ASN
2	B	70	HIS
2	B	136	HIS
2	B	231	GLN
2	B	284	ASN
1	C	26	GLN
1	C	59	GLN

Continued on next page...

Continued from previous page...

Mol	Chain	Res	Type
1	C	71	HIS
1	C	111	ASN
1	C	195	ASN
1	C	238	HIS
1	C	252	ASN
2	D	70	HIS
2	D	136	HIS
2	D	191	ASN
2	D	231	GLN
2	D	284	ASN

5.3.3 RNA ⓘ

There are no RNA molecules in this entry.

5.4 Non-standard residues in protein, DNA, RNA chains ⓘ

There are no non-standard protein/DNA/RNA residues in this entry.

5.5 Carbohydrates ⓘ

There are no monosaccharides in this entry.

5.6 Ligand geometry ⓘ

Of 6 ligands modelled in this entry, 3 are monoatomic and 1 is modelled with single atom - leaving 2 for Mogul analysis.

In the following table, the Counts columns list the number of bonds (or angles) for which Mogul statistics could be retrieved, the number of bonds (or angles) that are observed in the model and the number of bonds (or angles) that are defined in the Chemical Component Dictionary. The Link column lists molecule types, if any, to which the group is linked. The Z score for a bond length (or angle) is the number of standard deviations the observed value is removed from the expected value. A bond length (or angle) with $|Z| > 2$ is considered an outlier worth inspection. RMSZ is the root-mean-square of all Z scores of the bond lengths (or angles).

Mol	Type	Chain	Res	Link	Bond lengths			Bond angles		
					Counts	RMSZ	# Z > 2	Counts	RMSZ	# Z > 2
5	2XP	B	402	4	7,9,9	3.48	5 (71%)	2,10,10	7.23	1 (50%)
6	2X7	D	402	4	4,9,9	4.18	3 (75%)	2,11,11	0.68	0

In the following table, the Chirals column lists the number of chiral outliers, the number of chiral centers analysed, the number of these observed in the model and the number defined in the Chemical Component Dictionary. Similar counts are reported in the Torsion and Rings columns. '-' means no outliers of that kind were identified.

Mol	Type	Chain	Res	Link	Chirals	Torsions	Rings
5	2XP	B	402	4	-	2/3/9/9	-
6	2X7	D	402	4	-	-	0/0/1/1

All (8) bond length outliers are listed below:

Mol	Chain	Res	Type	Atoms	Z	Observed(Å)	Ideal(Å)
6	D	402	2X7	C3-C2	7.32	1.47	1.39
5	B	402	2XP	C3-C4	-4.76	1.35	1.50
5	B	402	2XP	C5-C4	4.19	1.47	1.33
5	B	402	2XP	C1-C2	-4.16	1.45	1.52
5	B	402	2XP	C5-C6	-3.91	1.32	1.44
5	B	402	2XP	O1-C6	3.13	1.32	1.22
6	D	402	2X7	C5-C4	2.72	1.46	1.38
6	D	402	2X7	C4-C3	-2.34	1.34	1.38

All (1) bond angle outliers are listed below:

Mol	Chain	Res	Type	Atoms	Z	Observed(°)	Ideal(°)
5	B	402	2XP	C4-C3-C2	10.20	132.00	113.93

There are no chirality outliers.

All (2) torsion outliers are listed below:

Mol	Chain	Res	Type	Atoms
5	B	402	2XP	C3-C4-C5-C6
5	B	402	2XP	C4-C5-C6-O1

There are no ring outliers.

2 monomers are involved in 6 short contacts:

Mol	Chain	Res	Type	Clashes	Symm-Clashes
5	B	402	2XP	3	0
6	D	402	2X7	3	0

5.7 Other polymers

There are no such residues in this entry.

5.8 Polymer linkage issues

There are no chain breaks in this entry.

6 Fit of model and data ⓘ

6.1 Protein, DNA and RNA chains ⓘ

In the following table, the column labelled ‘#RSRZ> 2’ contains the number (and percentage) of RSRZ outliers, followed by percent RSRZ outliers for the chain as percentile scores relative to all X-ray entries and entries of similar resolution. The OWAB column contains the minimum, median, 95th percentile and maximum values of the occupancy-weighted average B-factor per residue. The column labelled ‘Q< 0.9’ lists the number of (and percentage) of residues with an average occupancy less than 0.9.

Mol	Chain	Analysed	<RSRZ>	#RSRZ>2	OWAB(Å ²)	Q<0.9
1	A	270/271 (99%)	-0.37	0 100 100	13, 19, 27, 32	0
1	C	270/271 (99%)	-0.17	3 (1%) 80 85	16, 24, 33, 36	0
2	B	303/312 (97%)	0.10	1 (0%) 94 96	18, 27, 41, 45	0
2	D	299/312 (95%)	0.11	9 (3%) 50 57	18, 26, 41, 50	0
All	All	1142/1166 (97%)	-0.07	13 (1%) 80 85	13, 25, 36, 50	0

All (13) RSRZ outliers are listed below:

Mol	Chain	Res	Type	RSRZ
2	D	203	THR	4.3
2	D	1	MET	3.2
2	D	202	PRO	3.0
2	D	200	GLU	2.9
2	D	2	GLN	2.8
2	D	199	HIS	2.7
1	C	53	TRP	2.6
2	D	296	LEU	2.4
2	D	188	LEU	2.4
2	B	12	PRO	2.2
2	D	196	TRP	2.2
1	C	219	GLU	2.1
1	C	2	THR	2.1

6.2 Non-standard residues in protein, DNA, RNA chains ⓘ

There are no non-standard protein/DNA/RNA residues in this entry.

6.3 Carbohydrates [i](#)

There are no monosaccharides in this entry.

6.4 Ligands [i](#)

In the following table, the Atoms column lists the number of modelled atoms in the group and the number defined in the chemical component dictionary. The B-factors column lists the minimum, median, 95th percentile and maximum values of B factors of atoms in the group. The column labelled 'Q< 0.9' lists the number of atoms with occupancy less than 0.9.

Mol	Type	Chain	Res	Atoms	RSCC	RSR	B-factors(Å ²)	Q<0.9
5	2XP	B	402	10/10	0.67	0.52	29,29,30,31	10
6	2X7	D	402	9/9	0.84	0.22	33,33,33,34	0
7	OH	D	403	1/1	0.97	0.14	24,24,24,24	0
3	CL	A	300	1/1	0.98	0.09	36,36,36,36	0
4	FE2	D	401	1/1	0.99	0.08	27,27,27,27	0
4	FE2	B	401	1/1	1.00	0.10	29,29,29,29	0

6.5 Other polymers [i](#)

There are no such residues in this entry.