



Full wwPDB X-ray Structure Validation Report ⓘ

May 16, 2020 – 04:15 am BST

PDB ID : 5VSE
Title : Structure of human G9a SET-domain (EHMT2) in complex with inhibitor 17:
N 2 -cyclopentyl-6,7-dimethoxy-N 2 -methyl-N 4 -(1-methylpiperidin-4-yl)qui
nazoline-2,4-diamine
Authors : Babault, N.; Xiong, Y.; Liu, J.; Jin, J.
Deposited on : 2017-05-11
Resolution : 1.60 Å(reported)

This is a Full wwPDB X-ray Structure Validation Report for a publicly released PDB entry.

We welcome your comments at validation@mail.wwpdb.org

A user guide is available at

<https://www.wwpdb.org/validation/2017/XrayValidationReportHelp>

with specific help available everywhere you see the ⓘ symbol.

The following versions of software and data (see [references ⓘ](#)) were used in the production of this report:

MolProbity : 4.02b-467
Mogul : 1.8.5 (274361), CSD as541be (2020)
Xtriage (Phenix) : 1.13
EDS : 2.11
buster-report : 1.1.7 (2018)
Percentile statistics : 20191225.v01 (using entries in the PDB archive December 25th 2019)
Refmac : 5.8.0158
CCP4 : 7.0.044 (Gargrove)
Ideal geometry (proteins) : Engh & Huber (2001)
Ideal geometry (DNA, RNA) : Parkinson et al. (1996)
Validation Pipeline (wwPDB-VP) : 2.11

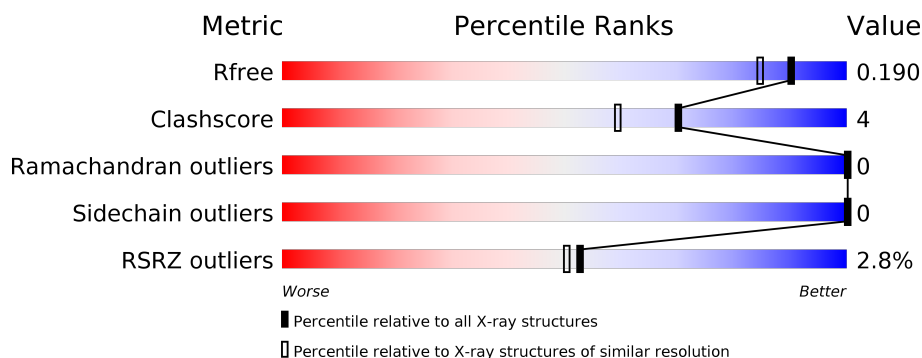
1 Overall quality at a glance

The following experimental techniques were used to determine the structure:

X-RAY DIFFRACTION

The reported resolution of this entry is 1.60 Å.

Percentile scores (ranging between 0-100) for global validation metrics of the entry are shown in the following graphic. The table shows the number of entries on which the scores are based.



Metric	Whole archive (#Entries)	Similar resolution (#Entries, resolution range(Å))
R_{free}	130704	3398 (1.60-1.60)
Clashscore	141614	3665 (1.60-1.60)
Ramachandran outliers	138981	3564 (1.60-1.60)
Sidechain outliers	138945	3563 (1.60-1.60)
RSRZ outliers	127900	3321 (1.60-1.60)

The table below summarises the geometric issues observed across the polymeric chains and their fit to the electron density. The red, orange, yellow and green segments on the lower bar indicate the fraction of residues that contain outliers for ≥ 3 , 2, 1 and 0 types of geometric quality criteria respectively. A grey segment represents the fraction of residues that are not modelled. The numeric value for each fraction is indicated below the corresponding segment, with a dot representing fractions $\leq 5\%$. The upper red bar (where present) indicates the fraction of residues that have poor fit to the electron density. The numeric value is given above the bar.

Mol	Chain	Length	Quality of chain
1	A	275	<div> <div>4%</div> <div> <div></div> <div>89%</div> <div>9%</div> <div></div> </div> </div>
1	B	275	<div> <div>%</div> <div> <div></div> <div>93%</div> <div>5%</div> <div></div> </div> </div>

2 Entry composition

There are 5 unique types of molecules in this entry. The entry contains 4811 atoms, of which 0 are hydrogens and 0 are deuteriums.

In the tables below, the ZeroOcc column contains the number of atoms modelled with zero occupancy, the AltConf column contains the number of residues with at least one atom in alternate conformation and the Trace column contains the number of residues modelled with at most 2 atoms.

- Molecule 1 is a protein called Histone-lysine N-methyltransferase EHMT2.

Mol	Chain	Residues	Atoms					ZeroOcc	AltConf	Trace
1	A	269	Total	C	N	O	S	0	0	0
			2168	1354	379	412	23			
1	B	271	Total	C	N	O	S	0	0	0
			2185	1364	383	415	23			

There are 2 discrepancies between the modelled and reference sequences:

Chain	Residue	Modelled	Actual	Comment	Reference
A	916	THR	-	expression tag	UNP Q96KQ7
B	916	THR	-	expression tag	UNP Q96KQ7

- Molecule 2 is ZINC ION (three-letter code: ZN) (formula: Zn).

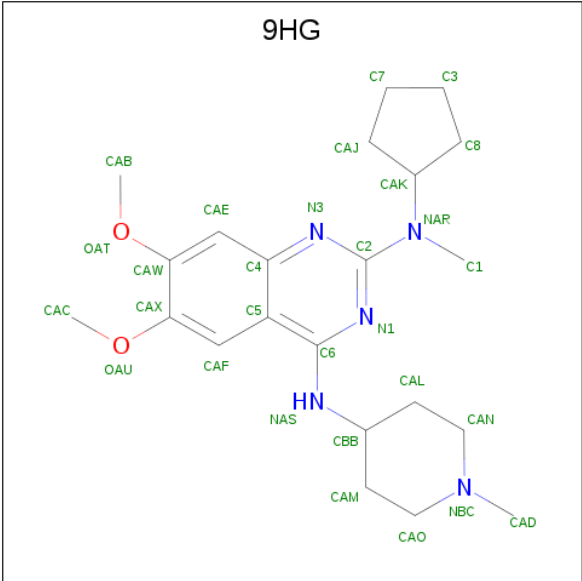
Mol	Chain	Residues	Atoms		ZeroOcc	AltConf
2	B	4	Total	Zn	0	0
			4	4		
2	A	4	Total	Zn	0	0
			4	4		

- Molecule 3 is S-ADENOSYLMETHIONINE (three-letter code: SAM) (formula: C₁₅H₂₂N₆O₅S).



Mol	Chain	Residues	Atoms					ZeroOcc	AltConf
3	A	1	Total	C	N	O	S	0	0
			27	15	6	5	1		
3	B	1	Total	C	N	O	S	0	0
			27	15	6	5	1		

- Molecule 4 is N 2 -cyclopentyl-6,7-dimethoxy-N 2 -methyl-N 4 -(1-methylpiperidin-4-yl)quinazoline-2,4-diamine (three-letter code: 9HG) (formula: C₂₂H₃₃N₅O₂).



Mol	Chain	Residues	Atoms				ZeroOcc	AltConf
4	A	1	Total	C	N	O	0	0
			29	22	5	2		

Continued on next page...

Continued from previous page...

Mol	Chain	Residues	Atoms				ZeroOcc	AltConf
4	B	1	Total	C	N	O	0	0
			29	22	5	2		

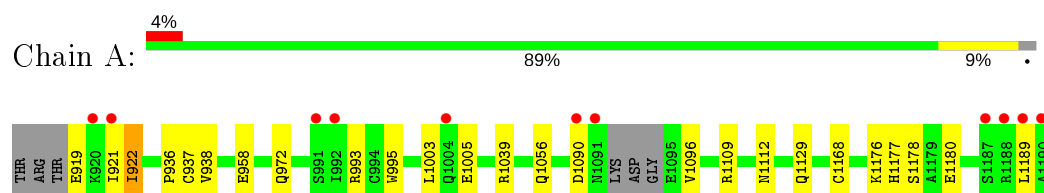
- Molecule 5 is water.

Mol	Chain	Residues	Atoms		ZeroOcc	AltConf
5	A	153	Total	O	0	0
			153	153		
5	B	185	Total	O	0	0
			185	185		

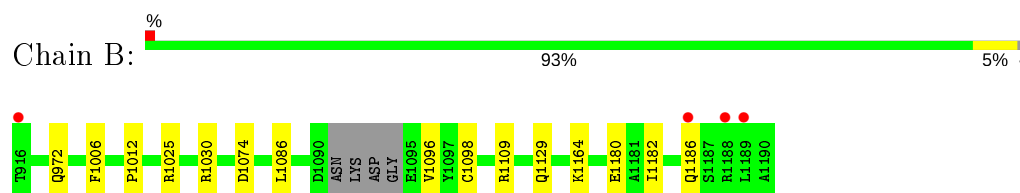
3 Residue-property plots [i](#)

These plots are drawn for all protein, RNA and DNA chains in the entry. The first graphic for a chain summarises the proportions of the various outlier classes displayed in the second graphic. The second graphic shows the sequence view annotated by issues in geometry and electron density. Residues are color-coded according to the number of geometric quality criteria for which they contain at least one outlier: green = 0, yellow = 1, orange = 2 and red = 3 or more. A red dot above a residue indicates a poor fit to the electron density ($RSRZ > 2$). Stretches of 2 or more consecutive residues without any outlier are shown as a green connector. Residues present in the sample, but not in the model, are shown in grey.

- Molecule 1: Histone-lysine N-methyltransferase EHMT2



- Molecule 1: Histone-lysine N-methyltransferase EHMT2



4 Data and refinement statistics

Property	Value	Source
Space group	P 1 21 1	Depositor
Cell constants a, b, c, α , β , γ	56.49Å 78.69Å 72.61Å 90.00° 91.35° 90.00°	Depositor
Resolution (Å)	45.88 – 1.60 72.59 – 1.60	Depositor EDS
% Data completeness (in resolution range)	98.8 (45.88-1.60) 98.8 (72.59-1.60)	Depositor EDS
R_{merge}	(Not available)	Depositor
R_{sym}	0.05	Depositor
$\langle I/\sigma(I) \rangle$ ¹	1.88 (at 1.60Å)	Xtriage
Refinement program	PHENIX 1.11.1_2575	Depositor
R, R_{free}	0.168 , 0.191 0.167 , 0.190	Depositor DCC
R_{free} test set	4121 reflections (4.98%)	wwPDB-VP
Wilson B-factor (Å ²)	24.5	Xtriage
Anisotropy	0.411	Xtriage
Bulk solvent k_{sol} (e/Å ³), B_{sol} (Å ²)	0.35 , 46.3	EDS
L-test for twinning ²	$\langle L \rangle = 0.49$, $\langle L^2 \rangle = 0.32$	Xtriage
Estimated twinning fraction	0.024 for h,-k,-l	Xtriage
F_o, F_c correlation	0.97	EDS
Total number of atoms	4811	wwPDB-VP
Average B, all atoms (Å ²)	38.0	wwPDB-VP

Xtriage's analysis on translational NCS is as follows: *The analyses of the Patterson function reveals a significant off-origin peak that is 23.16 % of the origin peak, indicating pseudo-translational symmetry. The chance of finding a peak of this or larger height randomly in a structure without pseudo-translational symmetry is equal to 4.9307e-03. The detected translational NCS is most likely also responsible for the elevated intensity ratio.*

¹Intensities estimated from amplitudes.

²Theoretical values of $\langle |L| \rangle$, $\langle L^2 \rangle$ for acentric reflections are 0.5, 0.333 respectively for untwinned datasets, and 0.375, 0.2 for perfectly twinned datasets.

5 Model quality [i](#)

5.1 Standard geometry [i](#)

Bond lengths and bond angles in the following residue types are not validated in this section: ZN, 9HG, SAM

The Z score for a bond length (or angle) is the number of standard deviations the observed value is removed from the expected value. A bond length (or angle) with $|Z| > 5$ is considered an outlier worth inspection. RMSZ is the root-mean-square of all Z scores of the bond lengths (or angles).

Mol	Chain	Bond lengths		Bond angles	
		RMSZ	$\# Z > 5$	RMSZ	$\# Z > 5$
1	A	0.37	0/2213	0.66	4/2990 (0.1%)
1	B	0.35	0/2230	0.56	0/3013
All	All	0.36	0/4443	0.61	4/6003 (0.1%)

There are no bond length outliers.

All (4) bond angle outliers are listed below:

Mol	Chain	Res	Type	Atoms	Z	Observed(°)	Ideal(°)
1	A	1189	LEU	CA-CB-CG	7.20	131.86	115.30
1	A	922	ILE	CG1-CB-CG2	-6.97	96.08	111.40
1	A	1176	LYS	CB-CG-CD	-6.96	93.51	111.60
1	A	1176	LYS	CD-CE-NZ	6.04	125.59	111.70

There are no chirality outliers.

There are no planarity outliers.

5.2 Too-close contacts [i](#)

In the following table, the Non-H and H(model) columns list the number of non-hydrogen atoms and hydrogen atoms in the chain respectively. The H(added) column lists the number of hydrogen atoms added and optimized by MolProbity. The Clashes column lists the number of clashes within the asymmetric unit, whereas Symm-Clashes lists symmetry related clashes.

Mol	Chain	Non-H	H(model)	H(added)	Clashes	Symm-Clashes
1	A	2168	0	2065	20	0
1	B	2185	0	2086	11	0
2	A	4	0	0	0	0
2	B	4	0	0	0	0
3	A	27	0	22	2	0

Continued on next page...

Continued from previous page...

Mol	Chain	Non-H	H(model)	H(added)	Clashes	Symm-Clashes
3	B	27	0	22	1	0
4	A	29	0	0	0	0
4	B	29	0	0	0	0
5	A	153	0	0	3	0
5	B	185	0	0	1	0
All	All	4811	0	4195	31	0

The all-atom clashscore is defined as the number of clashes found per 1000 atoms (including hydrogen atoms). The all-atom clashscore for this structure is 4.

All (31) close contacts within the same asymmetric unit are listed below, sorted by their clash magnitude.

Atom-1	Atom-2	Interatomic distance (Å)	Clash overlap (Å)
1:A:972:GLN:H	1:A:1129:GLN:HE22	1.27	0.82
1:A:1112:ASN:HD21	3:A:1505:SAM:HN2	1.33	0.77
1:B:972:GLN:H	1:B:1129:GLN:HE22	1.43	0.67
1:A:921:ILE:CD1	1:A:936:PRO:HB2	2.30	0.62
1:B:1182:ILE:O	1:B:1186:GLN:HG2	2.02	0.60
1:A:921:ILE:HA	1:A:938:VAL:HG12	1.84	0.60
1:B:1129:GLN:NE2	5:B:1602:HOH:O	2.39	0.55
1:B:972:GLN:H	1:B:1129:GLN:NE2	2.03	0.54
1:A:1039:ARG:H	1:A:1056:GLN:NE2	2.07	0.53
1:A:972:GLN:H	1:A:1129:GLN:NE2	2.00	0.53
1:A:919:GLU:N	5:A:1603:HOH:O	2.43	0.52
1:A:1090:ASP:HA	1:A:1096:VAL:HG13	1.92	0.51
1:A:922:ILE:HD11	1:A:937:CYS:SG	2.52	0.50
1:A:921:ILE:HD11	1:A:936:PRO:HB2	1.95	0.49
1:A:1109:ARG:O	3:A:1505:SAM:HE1	2.16	0.45
1:B:1109:ARG:O	3:B:1505:SAM:HE1	2.17	0.44
1:B:1074:ASP:HB3	1:B:1096:VAL:HG23	1.99	0.44
1:A:995:TRP:O	1:A:1003:LEU:N	2.49	0.44
1:A:1178:SER:OG	1:A:1180:GLU:HG2	2.18	0.44
1:A:1180:GLU:OE2	1:A:1180:GLU:N	2.43	0.43
1:B:1086:LEU:HD22	1:B:1098:CYS:SG	2.59	0.42
1:B:1180:GLU:H	1:B:1180:GLU:CD	2.22	0.42
1:A:1177:HIS:HE1	5:A:1683:HOH:O	2.02	0.42
1:A:993:ARG:NH2	1:A:1005:GLU:OE2	2.52	0.42
1:A:921:ILE:HD11	1:A:936:PRO:CB	2.49	0.42
1:B:1006:PHE:CZ	1:B:1012:PRO:HD2	2.56	0.41
1:A:995:TRP:HE3	1:A:1003:LEU:HB2	1.86	0.41
1:A:1168:CYS:HB2	1:A:1177:HIS:HB2	2.04	0.40

Continued on next page...

Continued from previous page...

Atom-1	Atom-2	Interatomic distance (Å)	Clash overlap (Å)
1:B:1025:ARG:O	1:B:1030:ARG:HD2	2.21	0.40
1:A:958:GLU:OE2	5:A:1601:HOH:O	2.22	0.40
1:B:1164:LYS:HA	1:B:1164:LYS:HD3	1.78	0.40

There are no symmetry-related clashes.

5.3 Torsion angles [i](#)

5.3.1 Protein backbone [i](#)

In the following table, the Percentiles column shows the percent Ramachandran outliers of the chain as a percentile score with respect to all X-ray entries followed by that with respect to entries of similar resolution.

The Analysed column shows the number of residues for which the backbone conformation was analysed, and the total number of residues.

Mol	Chain	Analysed	Favoured	Allowed	Outliers	Percentiles	
1	A	265/275 (96%)	253 (96%)	12 (4%)	0	100	100
1	B	267/275 (97%)	256 (96%)	11 (4%)	0	100	100
All	All	532/550 (97%)	509 (96%)	23 (4%)	0	100	100

There are no Ramachandran outliers to report.

5.3.2 Protein sidechains [i](#)

In the following table, the Percentiles column shows the percent sidechain outliers of the chain as a percentile score with respect to all X-ray entries followed by that with respect to entries of similar resolution.

The Analysed column shows the number of residues for which the sidechain conformation was analysed, and the total number of residues.

Mol	Chain	Analysed	Rotameric	Outliers	Percentiles	
1	A	242/247 (98%)	242 (100%)	0	100	100
1	B	244/247 (99%)	244 (100%)	0	100	100
All	All	486/494 (98%)	486 (100%)	0	100	100

There are no protein residues with a non-rotameric sidechain to report.

Some sidechains can be flipped to improve hydrogen bonding and reduce clashes. All (9) such sidechains are listed below:

Mol	Chain	Res	Type
1	A	932	ASN
1	A	1056	GLN
1	A	1112	ASN
1	A	1129	GLN
1	A	1169	GLN
1	A	1177	HIS
1	B	984	ASN
1	B	1060	GLN
1	B	1129	GLN

5.3.3 RNA [i](#)

There are no RNA molecules in this entry.

5.4 Non-standard residues in protein, DNA, RNA chains [i](#)

There are no non-standard protein/DNA/RNA residues in this entry.

5.5 Carbohydrates [i](#)

There are no carbohydrates in this entry.

5.6 Ligand geometry [i](#)

Of 12 ligands modelled in this entry, 8 are monoatomic - leaving 4 for Mogul analysis.

In the following table, the Counts columns list the number of bonds (or angles) for which Mogul statistics could be retrieved, the number of bonds (or angles) that are observed in the model and the number of bonds (or angles) that are defined in the Chemical Component Dictionary. The Link column lists molecule types, if any, to which the group is linked. The Z score for a bond length (or angle) is the number of standard deviations the observed value is removed from the expected value. A bond length (or angle) with $|Z| > 2$ is considered an outlier worth inspection. RMSZ is the root-mean-square of all Z scores of the bond lengths (or angles).

Mol	Type	Chain	Res	Link	Bond lengths			Bond angles		
					Counts	RMSZ	$\# Z > 2$	Counts	RMSZ	$\# Z > 2$
3	SAM	A	1505	-	21,29,29	0.95	1 (4%)	18,42,42	1.45	2 (11%)
4	9HG	A	1506	-	31,32,32	1.17	3 (9%)	41,45,45	2.18	13 (31%)

Mol	Type	Chain	Res	Link	Bond lengths			Bond angles		
					Counts	RMSZ	# Z > 2	Counts	RMSZ	# Z > 2
3	SAM	B	1505	-	21,29,29	0.92	1 (4%)	18,42,42	1.31	3 (16%)
4	9HG	B	1506	-	31,32,32	1.15	3 (9%)	41,45,45	2.17	12 (29%)

In the following table, the Chirals column lists the number of chiral outliers, the number of chiral centers analysed, the number of these observed in the model and the number defined in the Chemical Component Dictionary. Similar counts are reported in the Torsion and Rings columns. '-' means no outliers of that kind were identified.

Mol	Type	Chain	Res	Link	Chirals	Torsions	Rings
3	SAM	A	1505	-	-	2/8/33/33	0/3/3/3
4	9HG	A	1506	-	-	2/16/33/33	0/4/4/4
3	SAM	B	1505	-	-	2/8/33/33	0/3/3/3
4	9HG	B	1506	-	-	0/16/33/33	0/4/4/4

All (8) bond length outliers are listed below:

Mol	Chain	Res	Type	Atoms	Z	Observed(Å)	Ideal(Å)
4	A	1506	9HG	C6-C5	-3.52	1.40	1.44
4	B	1506	9HG	C6-C5	-3.48	1.40	1.44
4	B	1506	9HG	CAF-CAX	2.38	1.40	1.36
3	A	1505	SAM	O4'-C1'	2.26	1.44	1.41
3	B	1505	SAM	O4'-C1'	2.18	1.44	1.41
4	A	1506	9HG	CAK-NAR	-2.17	1.45	1.48
4	B	1506	9HG	CAK-NAR	-2.15	1.45	1.48
4	A	1506	9HG	C6-N1	2.06	1.35	1.32

All (30) bond angle outliers are listed below:

Mol	Chain	Res	Type	Atoms	Z	Observed(°)	Ideal(°)
4	B	1506	9HG	C1-NAR-CAK	6.28	123.33	117.92
4	B	1506	9HG	C8-CAK-NAR	-5.24	107.31	115.08
4	A	1506	9HG	C6-C5-C4	4.89	118.95	115.88
4	B	1506	9HG	C6-C5-C4	4.69	118.83	115.88
4	A	1506	9HG	CAJ-CAK-NAR	-4.58	108.28	115.08
4	A	1506	9HG	C8-CAK-NAR	-4.42	108.52	115.08
4	B	1506	9HG	CAM-CBB-NAS	-4.24	103.98	110.60
4	A	1506	9HG	CAM-CBB-NAS	-4.21	104.04	110.60
3	A	1505	SAM	N3-C2-N1	-4.17	122.16	128.68
4	A	1506	9HG	CAF-C5-C6	-3.97	121.30	124.88
4	A	1506	9HG	C1-NAR-CAK	3.89	121.28	117.92
4	B	1506	9HG	CAF-C5-C6	-3.69	121.55	124.88

Continued on next page...

Continued from previous page...

Mol	Chain	Res	Type	Atoms	Z	Observed(°)	Ideal(°)
3	B	1505	SAM	N3-C2-N1	-3.38	123.39	128.68
4	A	1506	9HG	OAT-CAW-CAE	-3.38	120.87	125.24
4	A	1506	9HG	C5-C4-N3	-3.28	119.33	122.81
4	A	1506	9HG	OAU-CAX-CAF	-3.20	121.10	125.24
4	B	1506	9HG	OAT-CAW-CAE	-3.18	121.12	125.24
4	B	1506	9HG	CAJ-CAK-NAR	-3.12	110.45	115.08
4	B	1506	9HG	C5-C4-N3	-2.90	119.73	122.81
4	A	1506	9HG	C6-NAS-CBB	-2.83	118.79	124.16
4	A	1506	9HG	OAT-CAW-CAX	2.59	119.02	115.41
4	A	1506	9HG	OAU-CAX-CAW	2.59	119.01	115.41
3	B	1505	SAM	C5'-SD-CG	2.55	109.90	103.40
3	A	1505	SAM	C5'-SD-CG	2.51	109.81	103.40
4	A	1506	9HG	CAM-CAO-NBC	-2.46	107.92	111.22
4	B	1506	9HG	C6-NAS-CBB	-2.33	119.74	124.16
4	B	1506	9HG	OAT-CAW-CAX	2.25	118.54	115.41
4	B	1506	9HG	CAM-CBB-CAL	-2.21	106.99	110.82
4	B	1506	9HG	CAC-OAU-CAX	2.19	120.83	117.53
3	B	1505	SAM	C4-C5-N7	-2.01	107.31	109.40

There are no chirality outliers.

All (6) torsion outliers are listed below:

Mol	Chain	Res	Type	Atoms
3	A	1505	SAM	CB-CG-SD-CE
3	A	1505	SAM	CB-CG-SD-C5'
3	B	1505	SAM	CB-CG-SD-CE
3	B	1505	SAM	CB-CG-SD-C5'
4	A	1506	9HG	C8-CAK-NAR-C1
4	A	1506	9HG	C8-CAK-NAR-C2

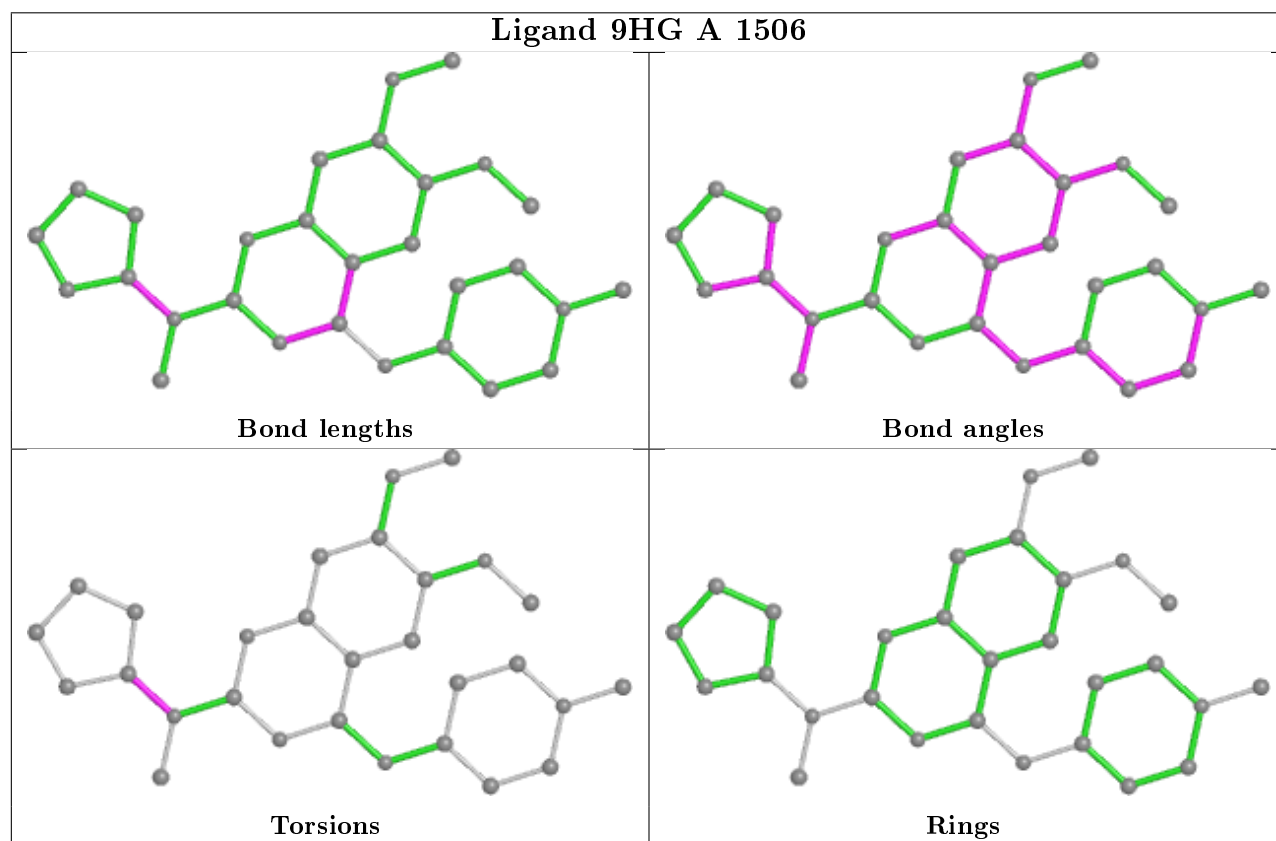
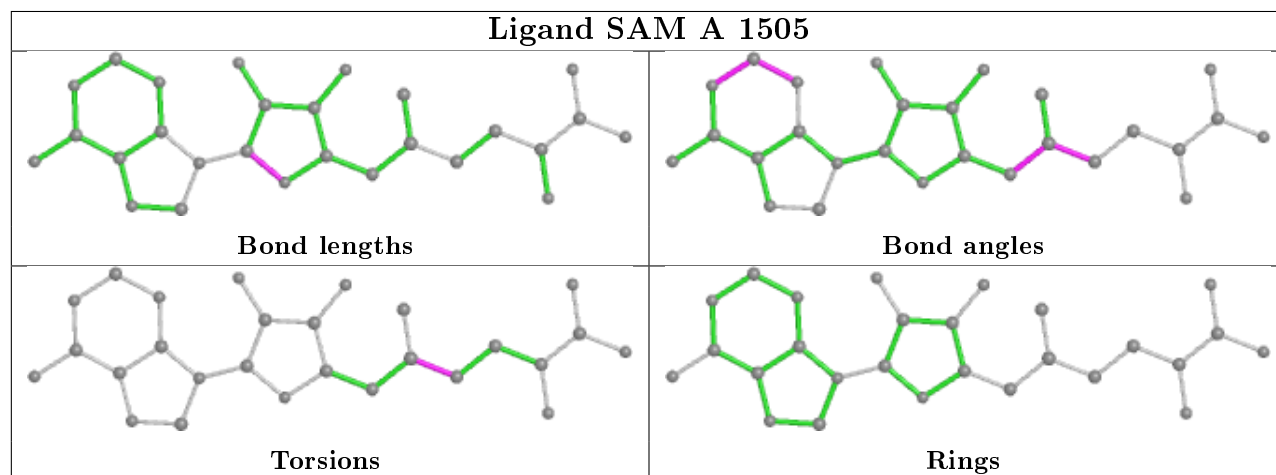
There are no ring outliers.

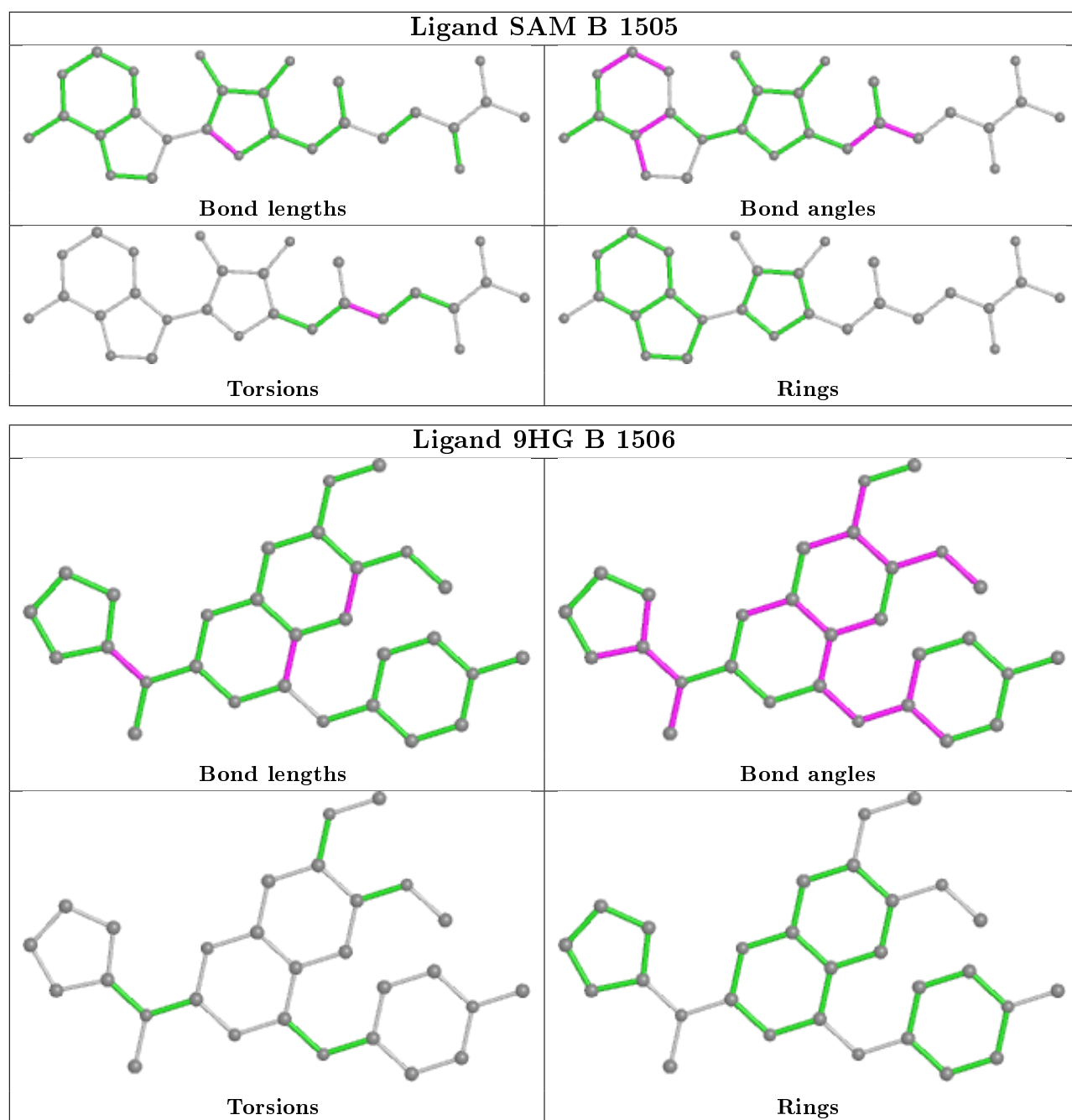
2 monomers are involved in 3 short contacts:

Mol	Chain	Res	Type	Clashes	Symm-Clashes
3	A	1505	SAM	2	0
3	B	1505	SAM	1	0

The following is a two-dimensional graphical depiction of Mogul quality analysis of bond lengths, bond angles, torsion angles, and ring geometry for all instances of the Ligand of Interest. In addition, ligands with molecular weight > 250 and outliers as shown on the validation Tables will also be included. For torsion angles, if less than 5% of the Mogul distribution of torsion angles is within 10 degrees of the torsion angle in question, then that torsion angle is considered an outlier.

Any bond that is central to one or more torsion angles identified as an outlier by Mogul will be highlighted in the graph. For rings, the root-mean-square deviation (RMSD) between the ring in question and similar rings identified by Mogul is calculated over all ring torsion angles. If the average RMSD is greater than 60 degrees and the minimal RMSD between the ring in question and any Mogul-identified rings is also greater than 60 degrees, then that ring is considered an outlier. The outliers are highlighted in purple. The color gray indicates Mogul did not find sufficient equivalents in the CSD to analyse the geometry.





5.7 Other polymers [i](#)

There are no such residues in this entry.

5.8 Polymer linkage issues [i](#)

There are no chain breaks in this entry.

6 Fit of model and data [i](#)

6.1 Protein, DNA and RNA chains [i](#)

In the following table, the column labelled ‘#RSRZ> 2’ contains the number (and percentage) of RSRZ outliers, followed by percent RSRZ outliers for the chain as percentile scores relative to all X-ray entries and entries of similar resolution. The OWAB column contains the minimum, median, 95th percentile and maximum values of the occupancy-weighted average B-factor per residue. The column labelled ‘Q< 0.9’ lists the number of (and percentage) of residues with an average occupancy less than 0.9.

Mol	Chain	Analysed	<RSRZ>	#RSRZ>2	OWAB(Å ²)	Q<0.9
1	A	269/275 (97%)	-0.17	11 (4%) 37 34	23, 36, 77, 94	0
1	B	271/275 (98%)	-0.33	4 (1%) 73 73	21, 33, 63, 94	0
All	All	540/550 (98%)	-0.25	15 (2%) 53 50	21, 34, 70, 94	0

All (15) RSRZ outliers are listed below:

Mol	Chain	Res	Type	RSRZ
1	A	920	LYS	5.6
1	B	1189	LEU	4.4
1	A	992	ILE	3.7
1	A	1189	LEU	3.4
1	A	991	SER	2.7
1	A	1187	SER	2.7
1	A	1188	ARG	2.6
1	A	1090	ASP	2.6
1	B	916	THR	2.6
1	A	1091	ASN	2.5
1	A	921	ILE	2.5
1	A	1004	GLN	2.4
1	B	1188	ARG	2.4
1	A	1190	ALA	2.4
1	B	1186	GLN	2.2

6.2 Non-standard residues in protein, DNA, RNA chains [i](#)

There are no non-standard protein/DNA/RNA residues in this entry.

6.3 Carbohydrates [i](#)

There are no carbohydrates in this entry.

6.4 Ligands

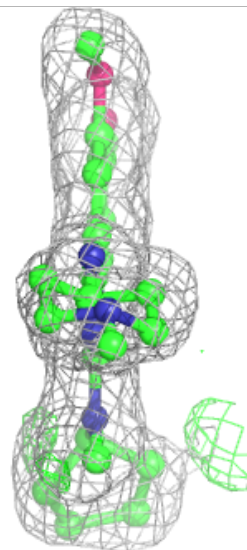
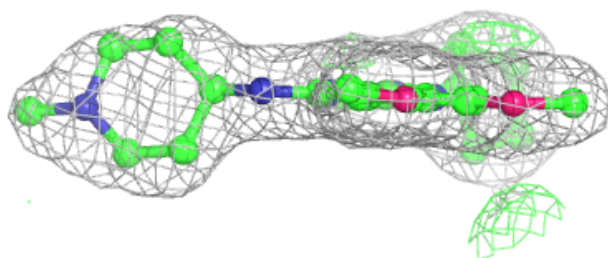
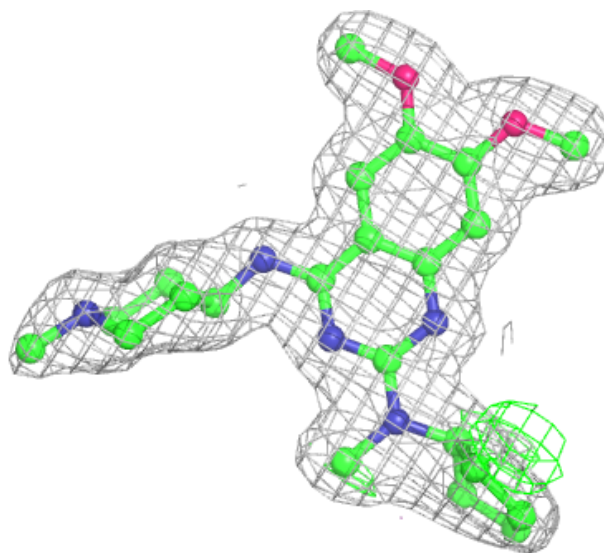
In the following table, the Atoms column lists the number of modelled atoms in the group and the number defined in the chemical component dictionary. The B-factors column lists the minimum, median, 95th percentile and maximum values of B factors of atoms in the group. The column labelled 'Q< 0.9' lists the number of atoms with occupancy less than 0.9.

Mol	Type	Chain	Res	Atoms	RSCC	RSR	B-factors(\AA^2)	Q<0.9
4	9HG	B	1506	29/29	0.94	0.08	25,33,46,49	0
4	9HG	A	1506	29/29	0.95	0.09	27,33,52,55	0
2	ZN	A	1504	1/1	0.96	0.08	33,33,33,33	0
3	SAM	A	1505	27/27	0.96	0.07	23,29,32,32	0
3	SAM	B	1505	27/27	0.97	0.07	22,26,29,31	0
2	ZN	B	1504	1/1	0.98	0.08	33,33,33,33	0
2	ZN	A	1502	1/1	0.99	0.06	27,27,27,27	0
2	ZN	B	1502	1/1	0.99	0.07	27,27,27,27	0
2	ZN	A	1503	1/1	0.99	0.07	27,27,27,27	0
2	ZN	B	1503	1/1	0.99	0.07	29,29,29,29	0
2	ZN	B	1501	1/1	0.99	0.09	27,27,27,27	0
2	ZN	A	1501	1/1	1.00	0.09	24,24,24,24	0

The following is a graphical depiction of the model fit to experimental electron density of all instances of the Ligand of Interest. In addition, ligands with molecular weight > 250 and outliers as shown on the geometry validation Tables will also be included. Each fit is shown from different orientation to approximate a three-dimensional view.

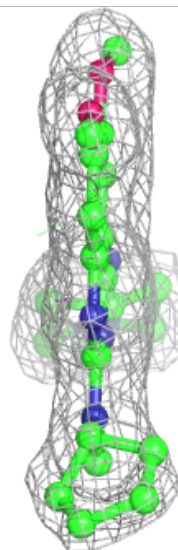
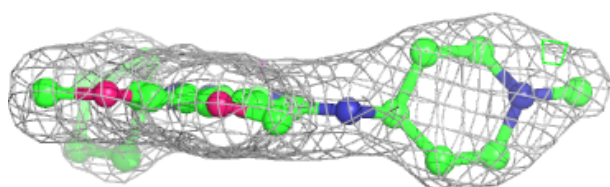
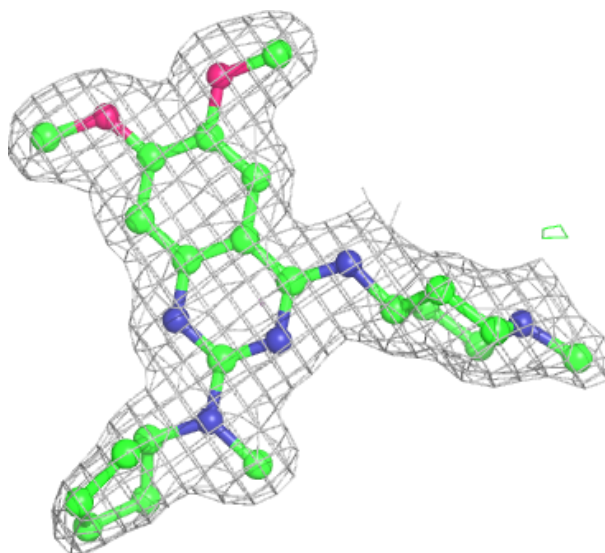
Electron density around 9HG B 1506:

$2mF_o-DF_c$ (at 0.7 rmsd) in gray
 mF_o-DF_c (at 3 rmsd) in purple (negative)
and green (positive)



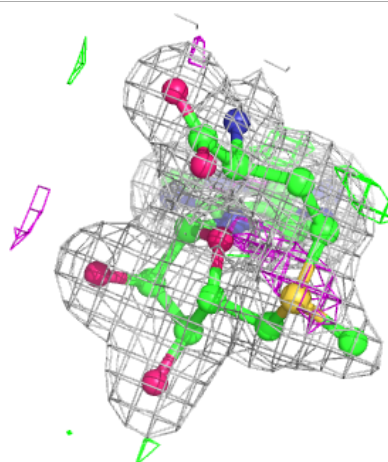
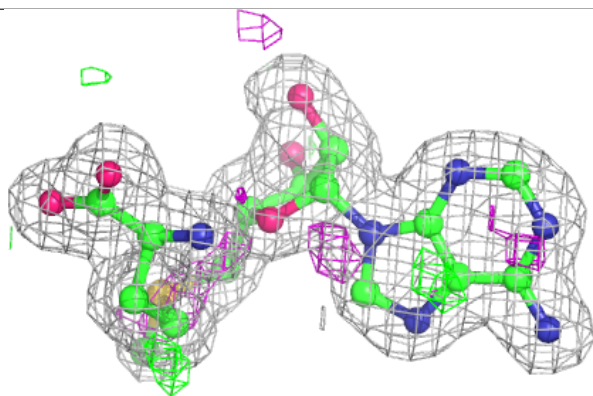
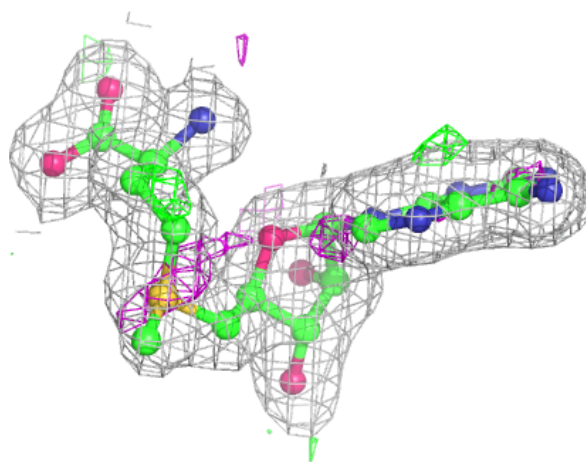
Electron density around 9HG A 1506:

$2mF_o-DF_c$ (at 0.7 rmsd) in gray
 mF_o-DF_c (at 3 rmsd) in purple (negative)
and green (positive)



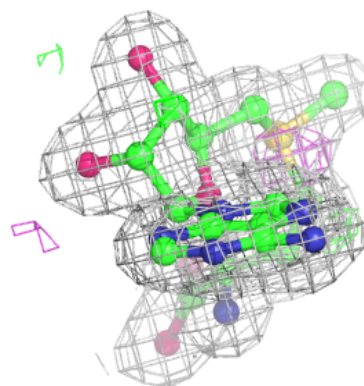
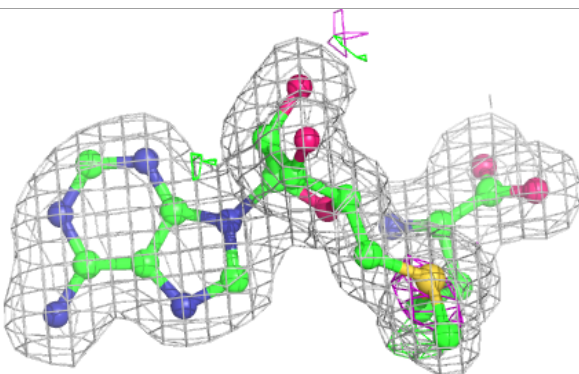
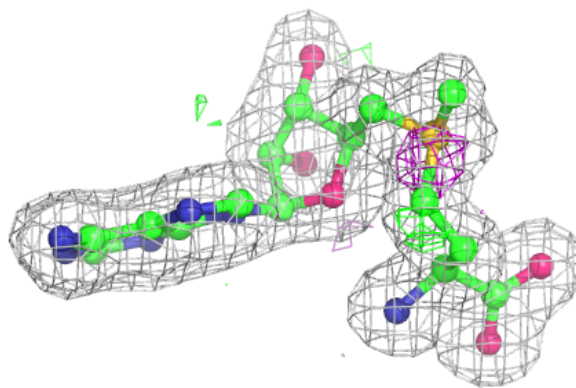
Electron density around SAM A 1505:

$2mF_o-DF_c$ (at 0.7 rmsd) in gray
 mF_o-DF_c (at 3 rmsd) in purple (negative)
and green (positive)



Electron density around SAM B 1505:

$2mF_o-DF_c$ (at 0.7 rmsd) in gray
 mF_o-DF_c (at 3 rmsd) in purple (negative)
and green (positive)



6.5 Other polymers [i](#)

There are no such residues in this entry.