



# Full wwPDB X-ray Structure Validation Report ⓘ

Sep 21, 2020 – 04:58 PM BST

PDB ID : 3VTR  
Title : Crystal Structure of insect beta-N-acetyl-D-hexosaminidase OfHex1 E328A complexed with TMG-chitotriomycin  
Authors : Liu, T.; Zhou, Y.; Chen, L.; Chen, W.; Liu, L.; Shen, X.; Yang, Q.  
Deposited on : 2012-06-02  
Resolution : 2.50 Å(reported)

This is a Full wwPDB X-ray Structure Validation Report for a publicly released PDB entry.

We welcome your comments at [validation@mail.wwpdb.org](mailto:validation@mail.wwpdb.org)

A user guide is available at

<https://www.wwpdb.org/validation/2017/XrayValidationReportHelp>

with specific help available everywhere you see the ⓘ symbol.

---

The following versions of software and data (see [references ⓘ](#)) were used in the production of this report:

MolProbity : 4.02b-467  
Mogul : 1.8.5 (274361), CSD as541be (2020)  
Xtriage (Phenix) : 1.13  
EDS : 2.14.6  
Percentile statistics : 20191225.v01 (using entries in the PDB archive December 25th 2019)  
Refmac : 5.8.0158  
CCP4 : 7.0.044 (Gargrove)  
Ideal geometry (proteins) : Engh & Huber (2001)  
Ideal geometry (DNA, RNA) : Parkinson et al. (1996)  
Validation Pipeline (wwPDB-VP) : 2.14.6

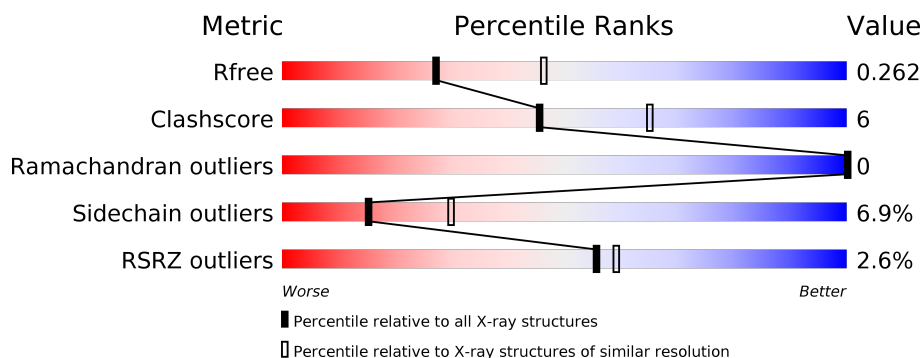
# 1 Overall quality at a glance

The following experimental techniques were used to determine the structure:

## *X-RAY DIFFRACTION*

The reported resolution of this entry is 2.50 Å.

Percentile scores (ranging between 0-100) for global validation metrics of the entry are shown in the following graphic. The table shows the number of entries on which the scores are based.



Metric	Whole archive (#Entries)	Similar resolution (#Entries, resolution range(Å))
$R_{free}$	130704	4661 (2.50-2.50)
Clashscore	141614	5346 (2.50-2.50)
Ramachandran outliers	138981	5231 (2.50-2.50)
Sidechain outliers	138945	5233 (2.50-2.50)
RSRZ outliers	127900	4559 (2.50-2.50)

The table below summarises the geometric issues observed across the polymeric chains and their fit to the electron density. The red, orange, yellow and green segments on the lower bar indicate the fraction of residues that contain outliers for  $\geq 3$ , 2, 1 and 0 types of geometric quality criteria respectively. A grey segment represents the fraction of residues that are not modelled. The numeric value for each fraction is indicated below the corresponding segment, with a dot representing fractions  $\leq 5\%$ . The upper red bar (where present) indicates the fraction of residues that have poor fit to the electron density. The numeric value is given above the bar.

Mol	Chain	Length	Quality of chain
1	A	572	<div> <div>3%</div> <div> <div></div> <div>83%</div> <div>15%</div> <div>.</div> </div> </div>
2	B	4	<div> <div>75%</div> <div>25%</div> </div>

The following table lists non-polymeric compounds, carbohydrate monomers and non-standard residues in protein, DNA, RNA chains that are outliers for geometric or electron-density-fit criteria:

Mol	Type	Chain	Res	Chirality	Geometry	Clashes	Electron density
2	NAG	B	1	-	-	-	X

## 2 Entry composition

There are 4 unique types of molecules in this entry. The entry contains 4950 atoms, of which 0 are hydrogens and 0 are deuteriums.

In the tables below, the ZeroOcc column contains the number of atoms modelled with zero occupancy, the AltConf column contains the number of residues with at least one atom in alternate conformation and the Trace column contains the number of residues modelled with at most 2 atoms.

- Molecule 1 is a protein called N-acetylglucosaminidase.

Mol	Chain	Residues	Atoms					ZeroOcc	AltConf	Trace
1	A	572	Total	C	N	O	S	0	0	0
			4611	2940	777	869	25			

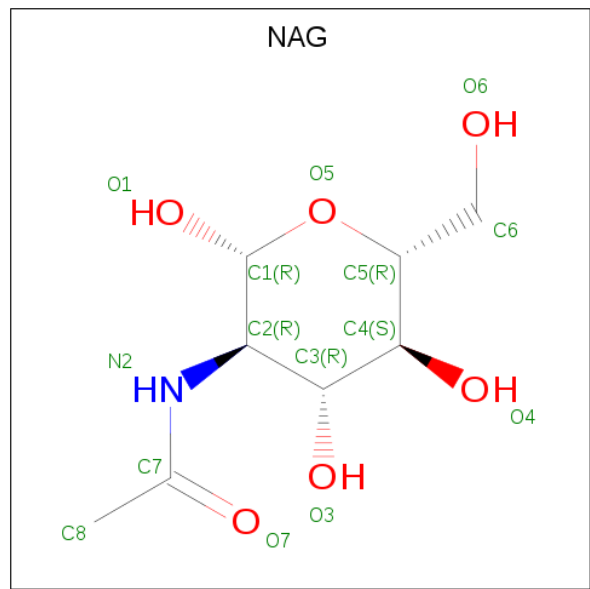
There are 3 discrepancies between the modelled and reference sequences:

Chain	Residue	Modelled	Actual	Comment	Reference
A	243	ASN	PHE	conflict	UNP Q06GJ0
A	328	ALA	GLU	engineered mutation	UNP Q06GJ0
A	570	PHE	LEU	conflict	UNP Q06GJ0

- Molecule 2 is an oligosaccharide called 2-deoxy-2-(trimethylammonio)-beta-D-glucopyranos e-(1-4)-2-acetamido-2-deoxy-beta-D-glucopyranose-(1-4)-2-acetamido-2-deoxy-beta-D-glucopyranose-(1-4)-2-acetamido-2-deoxy-beta-D-glucopyranose.

Mol	Chain	Residues	Atoms				ZeroOcc	AltConf	Trace
2	B	4	Total	C	N	O	0	0	0
			57	33	4	20			

- Molecule 3 is 2-acetamido-2-deoxy-beta-D-glucopyranose (three-letter code: NAG) (formula: C<sub>8</sub>H<sub>15</sub>NO<sub>6</sub>).



Mol	Chain	Residues	Atoms				ZeroOcc	AltConf
3	A	1	Total	C	N	O	0	0
			14	8	1	5		
3	A	1	Total	C	N	O	0	0
			14	8	1	5		

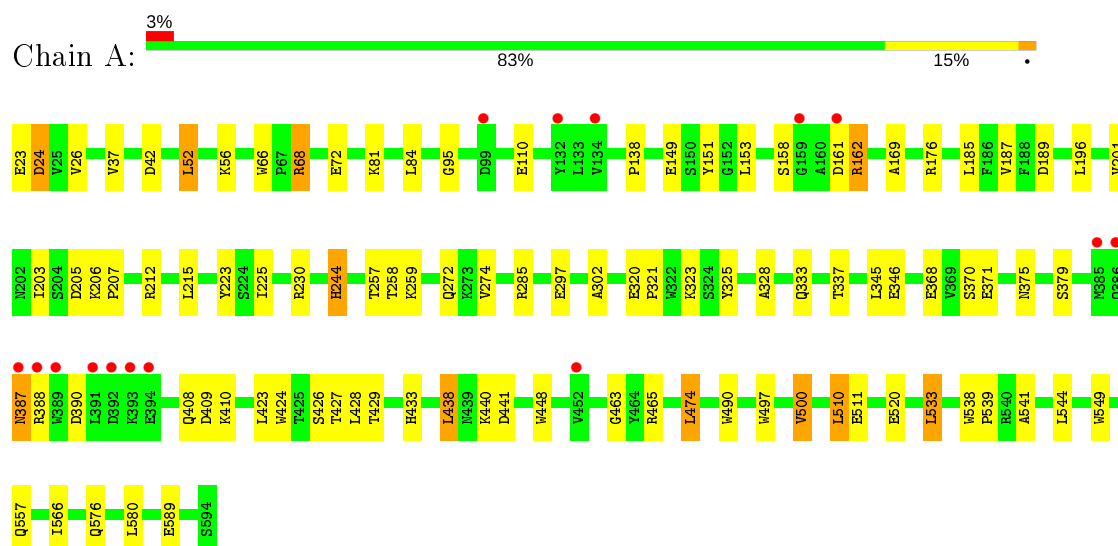
- Molecule 4 is water.

Mol	Chain	Residues	Atoms		ZeroOcc	AltConf
4	A	254	Total	O	0	0
			254	254		

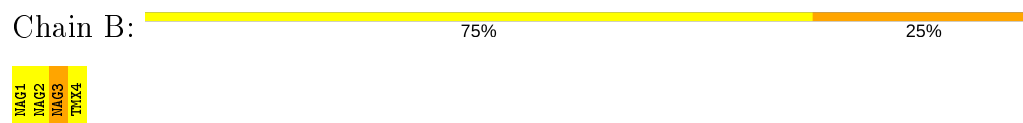
### 3 Residue-property plots [i](#)

These plots are drawn for all protein, RNA, DNA and oligosaccharide chains in the entry. The first graphic for a chain summarises the proportions of the various outlier classes displayed in the second graphic. The second graphic shows the sequence view annotated by issues in geometry and electron density. Residues are color-coded according to the number of geometric quality criteria for which they contain at least one outlier: green = 0, yellow = 1, orange = 2 and red = 3 or more. A red dot above a residue indicates a poor fit to the electron density ( $RSRZ > 2$ ). Stretches of 2 or more consecutive residues without any outlier are shown as a green connector. Residues present in the sample, but not in the model, are shown in grey.

- Molecule 1: N-acetylglucosaminidase



- Molecule 2: 2-deoxy-2-(trimethylammonio)-beta-D-glucopyranose-(1-4)-2-acetamido-2-deoxy-beta-D-glucopyranose-(1-4)-2-acetamido-2-deoxy-beta-D-glucopyranose-(1-4)-2-acetamido-2-deoxy-beta-D-glucopyranose



## 4 Data and refinement statistics

Property	Value	Source
Space group	P 32 2 1	Depositor
Cell constants a, b, c, $\alpha$ , $\beta$ , $\gamma$	107.94Å 107.94Å 174.95Å 90.00° 90.00° 120.00°	Depositor
Resolution (Å)	49.48 – 2.50 51.57 – 2.50	Depositor EDS
% Data completeness (in resolution range)	99.0 (49.48-2.50) 99.3 (51.57-2.50)	Depositor EDS
$R_{merge}$	0.11	Depositor
$R_{sym}$	0.11	Depositor
$\langle I/\sigma(I) \rangle$ <sup>1</sup>	2.39 (at 2.51Å)	Xtriage
Refinement program	REFMAC 5.5.0109, PHENIX 1.8_1069	Depositor
R, $R_{free}$	0.217 , 0.244 0.227 , 0.262	Depositor DCC
$R_{free}$ test set	2077 reflections (5.05%)	wwPDB-VP
Wilson B-factor (Å <sup>2</sup> )	53.4	Xtriage
Anisotropy	0.006	Xtriage
Bulk solvent $k_{sol}$ (e/Å <sup>3</sup> ), $B_{sol}$ (Å <sup>2</sup> )	0.38 , 42.6	EDS
L-test for twinning <sup>2</sup>	$\langle  L  \rangle = 0.56$ , $\langle L^2 \rangle = 0.40$	Xtriage
Estimated twinning fraction	0.000 for -h,-k,l	Xtriage
$F_o, F_c$ correlation	0.93	EDS
Total number of atoms	4950	wwPDB-VP
Average B, all atoms (Å <sup>2</sup> )	23.0	wwPDB-VP

Xtriage's analysis on translational NCS is as follows: *The largest off-origin peak in the Patterson function is 3.04% of the height of the origin peak. No significant pseudotranslation is detected.*

<sup>1</sup>Intensities estimated from amplitudes.

<sup>2</sup>Theoretical values of  $\langle |L| \rangle$ ,  $\langle L^2 \rangle$  for acentric reflections are 0.5, 0.333 respectively for untwinned datasets, and 0.375, 0.2 for perfectly twinned datasets.

## 5 Model quality [i](#)

### 5.1 Standard geometry [i](#)

Bond lengths and bond angles in the following residue types are not validated in this section: TMX, NAG

The Z score for a bond length (or angle) is the number of standard deviations the observed value is removed from the expected value. A bond length (or angle) with  $|Z| > 5$  is considered an outlier worth inspection. RMSZ is the root-mean-square of all Z scores of the bond lengths (or angles).

Mol	Chain	Bond lengths		Bond angles	
		RMSZ	$\# Z  > 5$	RMSZ	$\# Z  > 5$
1	A	0.35	0/4733	0.53	0/6427

There are no bond length outliers.

There are no bond angle outliers.

There are no chirality outliers.

There are no planarity outliers.

### 5.2 Too-close contacts [i](#)

In the following table, the Non-H and H(model) columns list the number of non-hydrogen atoms and hydrogen atoms in the chain respectively. The H(added) column lists the number of hydrogen atoms added and optimized by MolProbity. The Clashes column lists the number of clashes within the asymmetric unit, whereas Symm-Clashes lists symmetry related clashes.

Mol	Chain	Non-H	H(model)	H(added)	Clashes	Symm-Clashes
1	A	4611	0	4441	58	0
2	B	57	0	56	3	0
3	A	28	0	26	0	0
4	A	254	0	0	18	0
All	All	4950	0	4523	59	0

The all-atom clashscore is defined as the number of clashes found per 1000 atoms (including hydrogen atoms). The all-atom clashscore for this structure is 6.

All (59) close contacts within the same asymmetric unit are listed below, sorted by their clash magnitude.



Atom-1	Atom-2	Interatomic distance (Å)	Clash overlap (Å)
1:A:158:SER:HB3	4:A:952:HOH:O	1.25	1.27
1:A:169:ALA:HA	4:A:927:HOH:O	1.58	1.03
1:A:151:TYR:HA	4:A:927:HOH:O	1.74	0.84
1:A:337:THR:HA	4:A:925:HOH:O	1.76	0.84
1:A:24:ASP:HB2	4:A:942:HOH:O	1.84	0.77
1:A:162:ARG:HG3	4:A:952:HOH:O	1.87	0.74
1:A:68:ARG:HD3	4:A:886:HOH:O	1.87	0.73
1:A:149:GLU:OE1	1:A:212:ARG:NH2	2.29	0.64
1:A:510:LEU:HB3	1:A:511:GLU:OE1	2.00	0.62
1:A:52:LEU:HD22	1:A:56:LYS:HE2	1.81	0.61
1:A:346:GLU:HB2	1:A:410:LYS:HD2	1.86	0.57
1:A:388:ARG:HG3	1:A:388:ARG:O	2.04	0.57
1:A:371:GLU:H	1:A:371:GLU:CD	2.08	0.55
1:A:196:LEU:HG	4:A:949:HOH:O	2.05	0.55
1:A:207:PRO:HB3	1:A:549:TRP:CE3	2.42	0.54
1:A:538:TRP:CZ3	1:A:541:ALA:HB3	2.43	0.53
1:A:387:ASN:O	1:A:388:ARG:HG2	2.08	0.52
1:A:244:HIS:HE1	1:A:297:GLU:HB2	1.75	0.51
1:A:244:HIS:HD2	1:A:520:GLU:OE1	1.93	0.51
1:A:149:GLU:CD	1:A:212:ARG:HH22	2.13	0.50
1:A:302:ALA:HA	1:A:333:GLN:HG2	1.94	0.50
1:A:189:ASP:N	4:A:949:HOH:O	2.44	0.49
1:A:56:LYS:NZ	1:A:589:GLU:OE1	2.45	0.49
1:A:409:ASP:HB2	4:A:953:HOH:O	2.13	0.49
1:A:465:ARG:HD3	4:A:702:HOH:O	2.13	0.49
1:A:497:TRP:HA	1:A:500:VAL:HG13	1.95	0.48
1:A:387:ASN:HD22	1:A:387:ASN:N	2.11	0.48
1:A:230:ARG:HD3	4:A:917:HOH:O	2.13	0.48
1:A:151:TYR:CE2	1:A:205:ASP:HB3	2.49	0.48
1:A:81:LYS:HA	1:A:196:LEU:HD23	1.95	0.48
1:A:95:GLY:HA3	1:A:138:PRO:HB2	1.96	0.46
4:A:864:HOH:O	2:B:3:NAG:H82	2.15	0.46
1:A:244:HIS:CE1	1:A:297:GLU:HB2	2.51	0.46
1:A:258:THR:HB	4:A:879:HOH:O	2.16	0.45
1:A:424:TRP:CZ3	1:A:448:TRP:HB3	2.51	0.45
1:A:259:LYS:HG3	4:A:879:HOH:O	2.16	0.45
1:A:162:ARG:C	4:A:952:HOH:O	2.55	0.44
1:A:440:LYS:HD2	1:A:463:GLY:HA3	2.00	0.44
1:A:368:GLU:OE2	1:A:427:THR:HG22	2.17	0.44
1:A:510:LEU:HB3	1:A:511:GLU:H	1.56	0.44
1:A:185:LEU:HD13	1:A:201:VAL:HG21	2.00	0.44
1:A:72:GLU:O	1:A:203:ILE:HA	2.18	0.43

*Continued on next page...*

Continued from previous page...

Atom-1	Atom-2	Interatomic distance (Å)	Clash overlap (Å)
1:A:223:TYR:HE1	1:A:533:LEU:HB2	1.83	0.43
1:A:320:GLU:OE2	1:A:321:PRO:HA	2.19	0.43
1:A:490:TRP:HB3	2:B:3:NAG:H83	1.99	0.43
1:A:538:TRP:HA	1:A:539:PRO:HA	1.63	0.43
1:A:408:GLN:NE2	4:A:740:HOH:O	2.34	0.43
1:A:428:LEU:HD21	1:A:438:LEU:HD21	2.01	0.42
1:A:215:LEU:HD12	1:A:244:HIS:CD2	2.55	0.42
1:A:328:ALA:HB2	2:B:3:NAG:HN2	1.85	0.42
1:A:187:VAL:HG23	1:A:196:LEU:HB2	2.02	0.42
1:A:426:SER:N	1:A:429:THR:OG1	2.53	0.42
1:A:66:TRP:HB3	1:A:566:ILE:HD13	2.02	0.42
1:A:325:TYR:O	1:A:370:SER:OG	2.30	0.41
1:A:474:LEU:HD11	1:A:544:LEU:HD13	2.02	0.41
1:A:52:LEU:CD2	1:A:56:LYS:HE2	2.48	0.41
1:A:576:GLN:NE2	4:A:761:HOH:O	2.54	0.41
1:A:323:LYS:HA	1:A:323:LYS:HD2	1.88	0.40
1:A:427:THR:O	1:A:433:HIS:NE2	2.46	0.40

There are no symmetry-related clashes.

## 5.3 Torsion angles

### 5.3.1 Protein backbone

In the following table, the Percentiles column shows the percent Ramachandran outliers of the chain as a percentile score with respect to all X-ray entries followed by that with respect to entries of similar resolution.

The Analysed column shows the number of residues for which the backbone conformation was analysed, and the total number of residues.

Mol	Chain	Analysed	Favoured	Allowed	Outliers	Percentiles	
1	A	570/572 (100%)	560 (98%)	10 (2%)	0	100	100

There are no Ramachandran outliers to report.

### 5.3.2 Protein sidechains

In the following table, the Percentiles column shows the percent sidechain outliers of the chain as a percentile score with respect to all X-ray entries followed by that with respect to entries of similar resolution.

The Analysed column shows the number of residues for which the sidechain conformation was analysed, and the total number of residues.

Mol	Chain	Analysed	Rotameric	Outliers	Percentiles	
1	A	494/494 (100%)	460 (93%)	34 (7%)	15	30

All (34) residues with a non-rotameric sidechain are listed below:

Mol	Chain	Res	Type
1	A	23	GLU
1	A	24	ASP
1	A	26	VAL
1	A	37	VAL
1	A	42	ASP
1	A	52	LEU
1	A	68	ARG
1	A	84	LEU
1	A	110	GLU
1	A	153	LEU
1	A	161	ASP
1	A	162	ARG
1	A	176	ARG
1	A	206	LYS
1	A	225	ILE
1	A	244	HIS
1	A	257	THR
1	A	272	GLN
1	A	274	VAL
1	A	285	ARG
1	A	345	LEU
1	A	375	ASN
1	A	379	SER
1	A	387	ASN
1	A	390	ASP
1	A	423	LEU
1	A	438	LEU
1	A	441	ASP
1	A	474	LEU
1	A	500	VAL
1	A	510	LEU
1	A	533	LEU
1	A	557	GLN
1	A	580	LEU

Some sidechains can be flipped to improve hydrogen bonding and reduce clashes. All (5) such sidechains are listed below:

Mol	Chain	Res	Type
1	A	244	HIS
1	A	387	ASN
1	A	557	GLN
1	A	576	GLN
1	A	588	ASN

### 5.3.3 RNA ⓘ

There are no RNA molecules in this entry.

## 5.4 Non-standard residues in protein, DNA, RNA chains ⓘ

There are no non-standard protein/DNA/RNA residues in this entry.

## 5.5 Carbohydrates ⓘ

4 monosaccharides are modelled in this entry.

In the following table, the Counts columns list the number of bonds (or angles) for which Mogul statistics could be retrieved, the number of bonds (or angles) that are observed in the model and the number of bonds (or angles) that are defined in the Chemical Component Dictionary. The Link column lists molecule types, if any, to which the group is linked. The Z score for a bond length (or angle) is the number of standard deviations the observed value is removed from the expected value. A bond length (or angle) with  $|Z| > 2$  is considered an outlier worth inspection. RMSZ is the root-mean-square of all Z scores of the bond lengths (or angles).

Mol	Type	Chain	Res	Link	Bond lengths			Bond angles		
					Counts	RMSZ	$\# Z  > 2$	Counts	RMSZ	$\# Z  > 2$
2	NAG	B	1	2	15,15,15	0.68	0	21,21,21	1.22	3 (14%)
2	NAG	B	2	2	14,14,15	0.36	0	17,19,21	1.32	3 (17%)
2	NAG	B	3	2	14,14,15	0.26	0	17,19,21	1.18	2 (11%)
2	TMX	B	4	2	12,14,15	0.66	0	18,21,23	1.26	1 (5%)

In the following table, the Chirals column lists the number of chiral outliers, the number of chiral centers analysed, the number of these observed in the model and the number defined in the Chemical Component Dictionary. Similar counts are reported in the Torsion and Rings columns. '-' means no outliers of that kind were identified.

Mol	Type	Chain	Res	Link	Chirals	Torsions	Rings
2	NAG	B	1	2	-	0/6/26/26	0/1/1/1
2	NAG	B	2	2	-	0/6/23/26	0/1/1/1
2	NAG	B	3	2	-	2/6/23/26	0/1/1/1
2	TMX	B	4	2	-	0/8/25/28	0/1/1/1

There are no bond length outliers.

All (9) bond angle outliers are listed below:

Mol	Chain	Res	Type	Atoms	Z	Observed(°)	Ideal(°)
2	B	4	TMX	C1-O5-C5	4.40	118.16	112.19
2	B	2	NAG	C1-O5-C5	3.19	116.52	112.19
2	B	3	NAG	C1-C2-N2	-2.79	105.72	110.49
2	B	2	NAG	O4-C4-C3	-2.55	104.44	110.35
2	B	3	NAG	O4-C4-C3	-2.34	104.95	110.35
2	B	1	NAG	C6-C5-C4	-2.26	107.72	113.00
2	B	1	NAG	C4-C3-C2	2.19	113.55	110.34
2	B	1	NAG	C3-C4-C5	2.17	114.11	110.24
2	B	2	NAG	C1-C2-N2	-2.12	106.87	110.49

There are no chirality outliers.

All (2) torsion outliers are listed below:

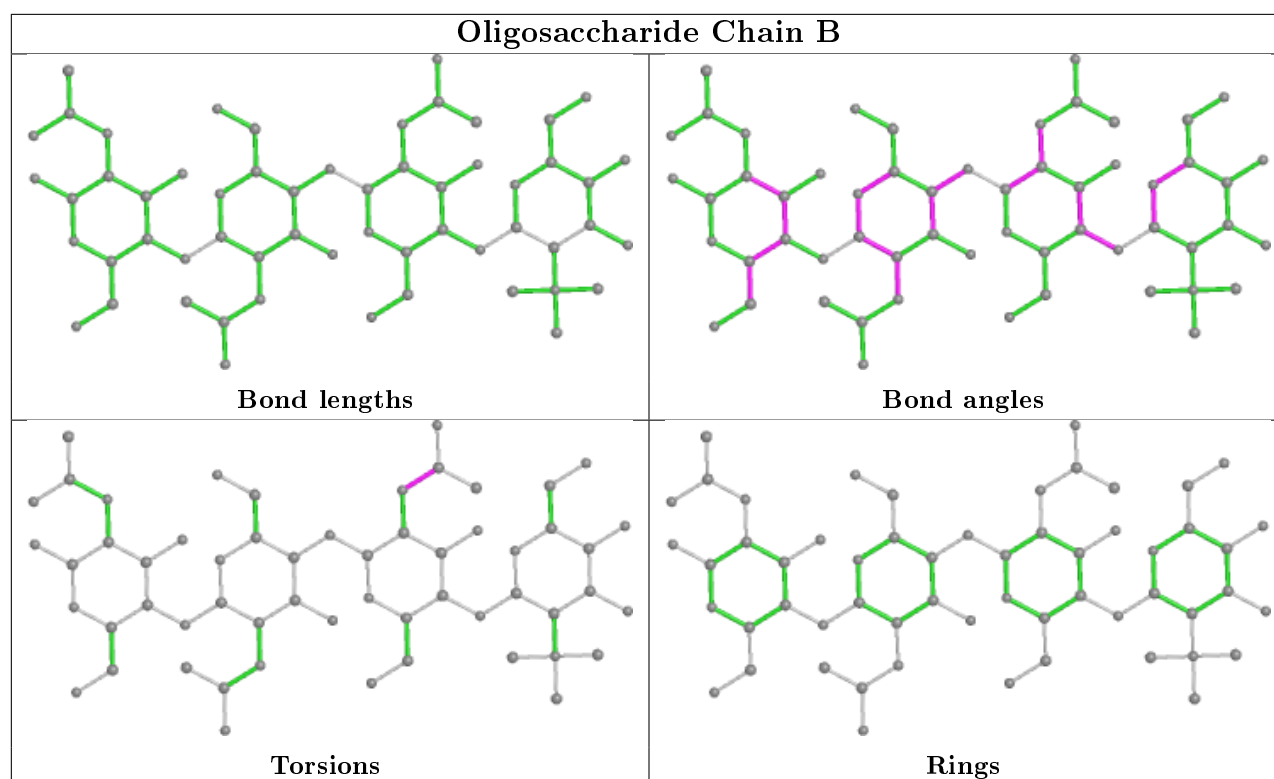
Mol	Chain	Res	Type	Atoms
2	B	3	NAG	C8-C7-N2-C2
2	B	3	NAG	O7-C7-N2-C2

There are no ring outliers.

1 monomer is involved in 3 short contacts:

Mol	Chain	Res	Type	Clashes	Symm-Clashes
2	B	3	NAG	3	0

The following is a two-dimensional graphical depiction of Mogul quality analysis of bond lengths, bond angles, torsion angles, and ring geometry for oligosaccharide.



## 5.6 Ligand geometry [i](#)

2 ligands are modelled in this entry.

In the following table, the Counts columns list the number of bonds (or angles) for which Mogul statistics could be retrieved, the number of bonds (or angles) that are observed in the model and the number of bonds (or angles) that are defined in the Chemical Component Dictionary. The Link column lists molecule types, if any, to which the group is linked. The Z score for a bond length (or angle) is the number of standard deviations the observed value is removed from the expected value. A bond length (or angle) with  $|Z| > 2$  is considered an outlier worth inspection. RMSZ is the root-mean-square of all Z scores of the bond lengths (or angles).

Mol	Type	Chain	Res	Link	Bond lengths			Bond angles		
					Counts	RMSZ	$\# Z  > 2$	Counts	RMSZ	$\# Z  > 2$
3	NAG	A	603	-	14,14,15	1.47	1 (7%)	17,19,21	1.79	3 (17%)
3	NAG	A	602	-	14,14,15	0.77	0	17,19,21	1.25	2 (11%)

In the following table, the Chirals column lists the number of chiral outliers, the number of chiral centers analysed, the number of these observed in the model and the number defined in the Chemical Component Dictionary. Similar counts are reported in the Torsion and Rings columns. '-' means no outliers of that kind were identified.

Mol	Type	Chain	Res	Link	Chirals	Torsions	Rings
3	NAG	A	603	-	-	2/6/23/26	0/1/1/1

*Continued on next page...*

*Continued from previous page...*

Mol	Type	Chain	Res	Link	Chirals	Torsions	Rings
3	NAG	A	602	-	-	0/6/23/26	0/1/1/1

All (1) bond length outliers are listed below:

Mol	Chain	Res	Type	Atoms	Z	Observed(Å)	Ideal(Å)
3	A	603	NAG	C8-C7	4.99	1.60	1.50

All (5) bond angle outliers are listed below:

Mol	Chain	Res	Type	Atoms	Z	Observed(°)	Ideal(°)
3	A	603	NAG	C1-O5-C5	5.65	119.85	112.19
3	A	602	NAG	C1-C2-N2	-3.85	103.92	110.49
3	A	603	NAG	O5-C1-C2	3.47	116.76	111.29
3	A	602	NAG	O5-C1-C2	2.48	115.20	111.29
3	A	603	NAG	C1-C2-N2	2.14	114.14	110.49

There are no chirality outliers.

All (2) torsion outliers are listed below:

Mol	Chain	Res	Type	Atoms
3	A	603	NAG	O5-C5-C6-O6
3	A	603	NAG	C4-C5-C6-O6

There are no ring outliers.

No monomer is involved in short contacts.

## 5.7 Other polymers [i](#)

There are no such residues in this entry.

## 5.8 Polymer linkage issues [i](#)

There are no chain breaks in this entry.

## 6 Fit of model and data [i](#)

### 6.1 Protein, DNA and RNA chains [i](#)

In the following table, the column labelled ‘#RSRZ> 2’ contains the number (and percentage) of RSRZ outliers, followed by percent RSRZ outliers for the chain as percentile scores relative to all X-ray entries and entries of similar resolution. The OWAB column contains the minimum, median, 95<sup>th</sup> percentile and maximum values of the occupancy-weighted average B-factor per residue. The column labelled ‘Q< 0.9’ lists the number of (and percentage) of residues with an average occupancy less than 0.9.

Mol	Chain	Analysed	<RSRZ>	#RSRZ>2	OWAB(Å <sup>2</sup> )	Q<0.9
1	A	572/572 (100%)	-0.06	15 (2%) 56 59	7, 20, 45, 87	0

All (15) RSRZ outliers are listed below:

Mol	Chain	Res	Type	RSRZ
1	A	388	ARG	5.0
1	A	385	MET	4.1
1	A	394	GLU	3.7
1	A	391	LEU	3.7
1	A	392	ASP	3.4
1	A	389	TRP	3.3
1	A	161	ASP	3.1
1	A	387	ASN	3.0
1	A	99	ASP	2.9
1	A	159	GLY	2.5
1	A	386	GLN	2.4
1	A	452	VAL	2.4
1	A	132	TYR	2.1
1	A	393	LYS	2.1
1	A	134	VAL	2.0

### 6.2 Non-standard residues in protein, DNA, RNA chains [i](#)

There are no non-standard protein/DNA/RNA residues in this entry.

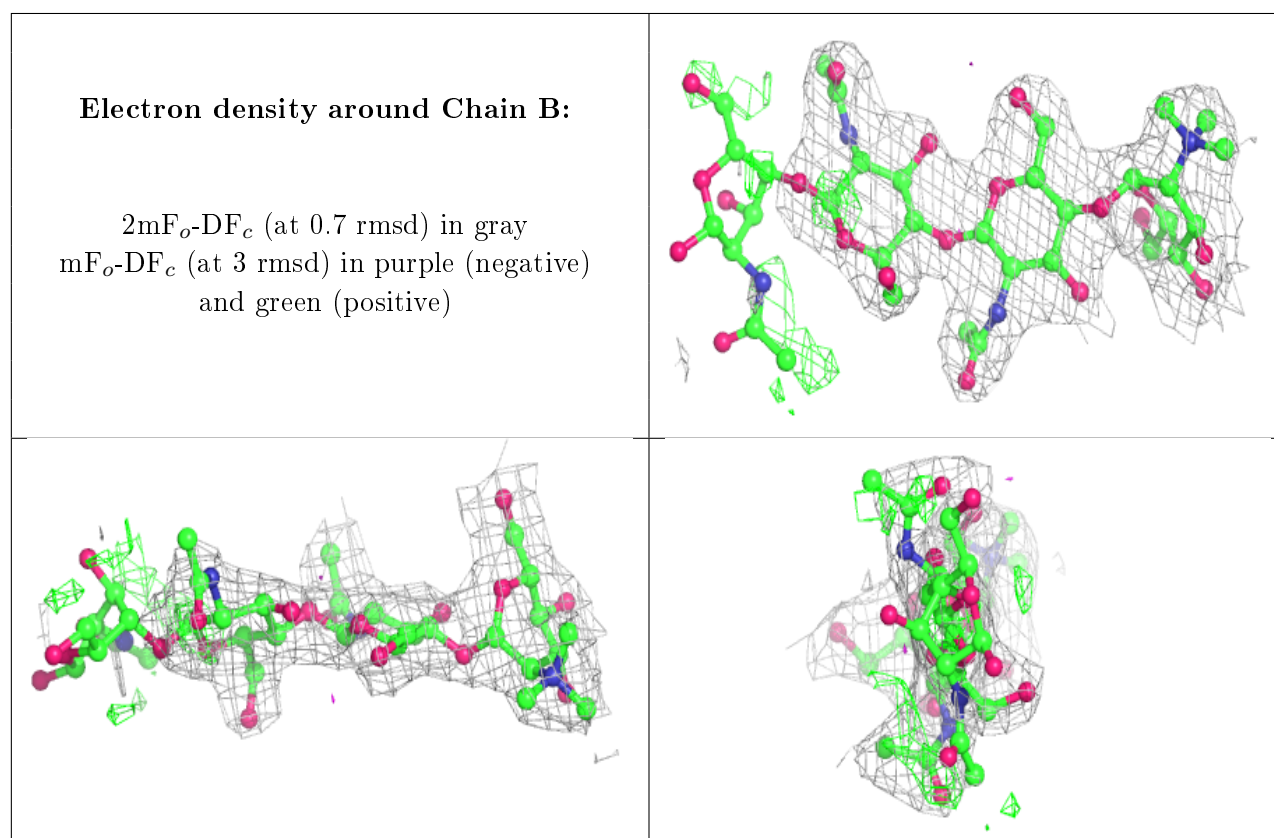
### 6.3 Carbohydrates [i](#)

In the following table, the Atoms column lists the number of modelled atoms in the group and the number defined in the chemical component dictionary. The B-factors column lists the minimum, median, 95<sup>th</sup> percentile and maximum values of B factors of atoms in the group. The column labelled ‘Q< 0.9’ lists the number of atoms with occupancy less than 0.9.



Mol	Type	Chain	Res	Atoms	RSCC	RSR	B-factors( $\text{\AA}^2$ )	Q<0.9
2	NAG	B	1	15/15	0.47	0.53	30,38,46,49	15
2	NAG	B	2	14/15	0.88	0.18	16,24,42,51	2
2	NAG	B	3	14/15	0.94	0.12	13,20,26,33	0
2	TMX	B	4	14/15	0.96	0.12	12,17,26,32	0

The following is a graphical depiction of the model fit to experimental electron density for oligosaccharide. Each fit is shown from different orientation to approximate a three-dimensional view.



## 6.4 Ligands ⓘ

In the following table, the Atoms column lists the number of modelled atoms in the group and the number defined in the chemical component dictionary. The B-factors column lists the minimum, median, 95<sup>th</sup> percentile and maximum values of B factors of atoms in the group. The column labelled 'Q< 0.9' lists the number of atoms with occupancy less than 0.9.

Mol	Type	Chain	Res	Atoms	RSCC	RSR	B-factors( $\text{\AA}^2$ )	Q<0.9
3	NAG	A	603	14/15	0.77	0.37	38,53,61,62	0
3	NAG	A	602	14/15	0.83	0.27	20,37,48,50	0

## 6.5 Other polymers

There are no such residues in this entry.