



Full wwPDB X-ray Structure Validation Report ⓘ

Aug 7, 2020 – 03:57 AM BST

PDB ID : 5VTZ
Title : Crystal structure of the A/Hong Kong/1/1968 (H3N2) influenza virus hemagglutinin G225Q/L226A mutant apo form
Authors : Wu, N.C.; Wilson, I.A.
Deposited on : 2017-05-18
Resolution : 2.15 Å(reported)

This is a Full wwPDB X-ray Structure Validation Report for a publicly released PDB entry.

We welcome your comments at validation@mail.wwpdb.org

A user guide is available at

<https://www.wwpdb.org/validation/2017/XrayValidationReportHelp>

with specific help available everywhere you see the ⓘ symbol.

The following versions of software and data (see [references ⓘ](#)) were used in the production of this report:

MolProbity : 4.02b-467
Mogul : 1.8.5 (274361), CSD as541be (2020)
Xtriage (Phenix) : 1.13
EDS : 2.13.1
Percentile statistics : 20191225.v01 (using entries in the PDB archive December 25th 2019)
Refmac : 5.8.0158
CCP4 : 7.0.044 (Gargrove)
Ideal geometry (proteins) : Engh & Huber (2001)
Ideal geometry (DNA, RNA) : Parkinson et al. (1996)
Validation Pipeline (wwPDB-VP) : 2.13.1

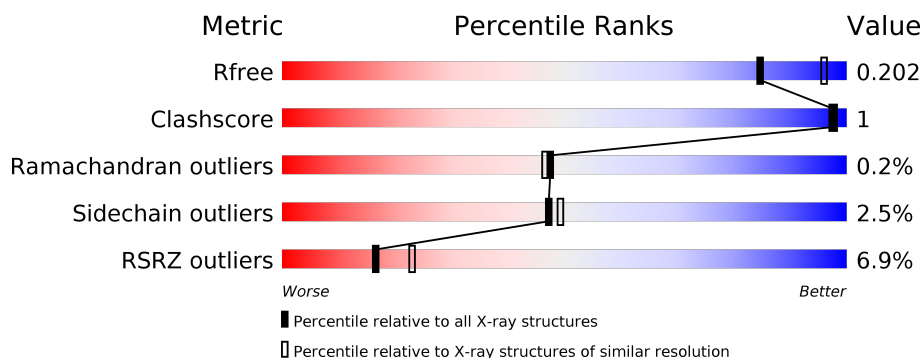
1 Overall quality at a glance

The following experimental techniques were used to determine the structure:

X-RAY DIFFRACTION

The reported resolution of this entry is 2.15 Å.

Percentile scores (ranging between 0-100) for global validation metrics of the entry are shown in the following graphic. The table shows the number of entries on which the scores are based.





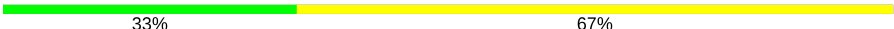
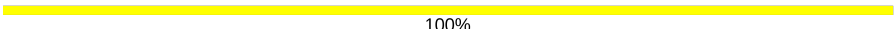
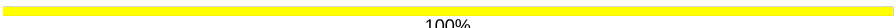
Metric	Whole archive (#Entries)	Similar resolution (#Entries, resolution range(Å))
R_{free}	130704	1479 (2.16-2.16)
Clashscore	141614	1585 (2.16-2.16)
Ramachandran outliers	138981	1560 (2.16-2.16)
Sidechain outliers	138945	1559 (2.16-2.16)
RSRZ outliers	127900	1456 (2.16-2.16)

The table below summarises the geometric issues observed across the polymeric chains and their fit to the electron density. The red, orange, yellow and green segments on the lower bar indicate the fraction of residues that contain outliers for ≥ 3 , 2, 1 and 0 types of geometric quality criteria respectively. A grey segment represents the fraction of residues that are not modelled. The numeric value for each fraction is indicated below the corresponding segment, with a dot representing fractions $\leq 5\%$. The upper red bar (where present) indicates the fraction of residues that have poor fit to the electron density. The numeric value is given above the bar.

Mol	Chain	Length	Quality of chain
1	A	323	<div> <div>3%</div> <div>94%</div> </div>
1	C	323	<div> <div>2%</div> <div>94%</div> </div>
1	E	323	<div> <div>5%</div> <div>93%</div> </div>
2	B	174	<div> <div>11%</div> <div>96%</div> </div>
2	D	174	<div> <div>11%</div> <div>97%</div> </div>
2	F	174	<div> <div>17%</div> <div>95%</div> </div>

Continued on next page...

Continued from previous page...

Mol	Chain	Length	Quality of chain
3	G	3	 67% 33%
3	H	3	 33% 67%
3	J	3	 33% 67%
4	I	2	 100%
4	K	2	 100%
4	M	2	 50% 50%
5	L	5	 100%

The following table lists non-polymeric compounds, carbohydrate monomers and non-standard residues in protein, DNA, RNA chains that are outliers for geometric or electron-density-fit criteria:

Mol	Type	Chain	Res	Chirality	Geometry	Clashes	Electron density
6	NAG	C	502	-	-	-	X

2 Entry composition

There are 7 unique types of molecules in this entry. The entry contains 12719 atoms, of which 0 are hydrogens and 0 are deuteriums.

In the tables below, the ZeroOcc column contains the number of atoms modelled with zero occupancy, the AltConf column contains the number of residues with at least one atom in alternate conformation and the Trace column contains the number of residues modelled with at most 2 atoms.

- Molecule 1 is a protein called Hemagglutinin HA1 chain.

Mol	Chain	Residues	Atoms					ZeroOcc	AltConf	Trace
1	A	321	Total	C	N	O	S	0	0	0
			2481	1552	439	477	13			
1	C	317	Total	C	N	O	S	0	0	0
			2445	1531	430	471	13			
1	E	317	Total	C	N	O	S	0	0	0
			2445	1531	430	471	13			

There are 18 discrepancies between the modelled and reference sequences:

Chain	Residue	Modelled	Actual	Comment	Reference
A	7	ALA	-	expression tag	UNP Q91MA7
A	8	ASP	-	expression tag	UNP Q91MA7
A	9	PRO	-	expression tag	UNP Q91MA7
A	10	GLY	-	expression tag	UNP Q91MA7
A	225	GLN	GLY	engineered mutation	UNP Q91MA7
A	226	ALA	LEU	engineered mutation	UNP Q91MA7
C	7	ALA	-	expression tag	UNP Q91MA7
C	8	ASP	-	expression tag	UNP Q91MA7
C	9	PRO	-	expression tag	UNP Q91MA7
C	10	GLY	-	expression tag	UNP Q91MA7
C	225	GLN	GLY	engineered mutation	UNP Q91MA7
C	226	ALA	LEU	engineered mutation	UNP Q91MA7
E	7	ALA	-	expression tag	UNP Q91MA7
E	8	ASP	-	expression tag	UNP Q91MA7
E	9	PRO	-	expression tag	UNP Q91MA7
E	10	GLY	-	expression tag	UNP Q91MA7
E	225	GLN	GLY	engineered mutation	UNP Q91MA7
E	226	ALA	LEU	engineered mutation	UNP Q91MA7

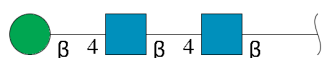
- Molecule 2 is a protein called Hemagglutinin HA2 chain.

Mol	Chain	Residues	Atoms					ZeroOcc	AltConf	Trace
2	B	172	Total	C	N	O	S	0	0	0
			1391	863	243	279	6			
2	D	171	Total	C	N	O	S	0	0	0
			1382	858	241	277	6			
2	F	171	Total	C	N	O	S	0	0	0
			1382	858	241	277	6			

There are 3 discrepancies between the modelled and reference sequences:

Chain	Residue	Modelled	Actual	Comment	Reference
B	123	GLY	ARG	conflict	UNP Q91MA7
D	123	GLY	ARG	conflict	UNP Q91MA7
F	123	GLY	ARG	conflict	UNP Q91MA7

- Molecule 3 is an oligosaccharide called beta-D-mannopyranose-(1-4)-2-acetamido-2-deoxy-beta-D-glucopyranose-(1-4)-2-acetamido-2-deoxy-beta-D-glucopyranose.



Mol	Chain	Residues	Atoms					ZeroOcc	AltConf	Trace
3	G	3	Total	C	N	O		0	0	0
			39	22	2	15				
3	H	3	Total	C	N	O		0	0	0
			39	22	2	15				
3	J	3	Total	C	N	O		0	0	0
			39	22	2	15				

- Molecule 4 is an oligosaccharide called 2-acetamido-2-deoxy-beta-D-glucopyranose-(1-4)-2-acetamido-2-deoxy-beta-D-glucopyranose.



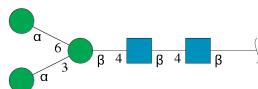
Mol	Chain	Residues	Atoms					ZeroOcc	AltConf	Trace
4	I	2	Total	C	N	O		0	0	0
			28	16	2	10				
4	K	2	Total	C	N	O		0	0	0
			28	16	2	10				

Continued on next page...

Continued from previous page...

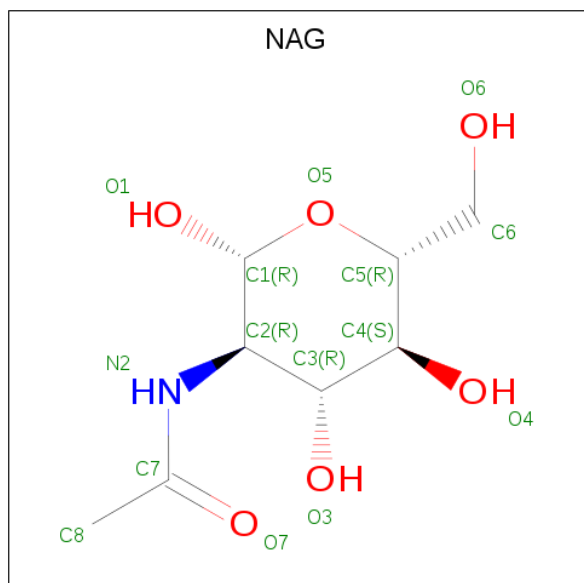
Mol	Chain	Residues	Atoms				ZeroOcc	AltConf	Trace
4	M	2	Total	C	N	O	0	0	0
			28	16	2	10			

- Molecule 5 is an oligosaccharide called alpha-D-mannopyranose-(1-3)-[alpha-D-mannopyranose-(1-6)]beta-D-mannopyranose-(1-4)-2-acetamido-2-deoxy-beta-D-glucopyranose-(1-4)-2-acetamido-2-deoxy-beta-D-glucopyranose.



Mol	Chain	Residues	Atoms				ZeroOcc	AltConf	Trace
5	L	5	Total	C	N	O	0	0	0
			61	34	2	25			

- Molecule 6 is 2-acetamido-2-deoxy-beta-D-glucopyranose (three-letter code: NAG) (formula: C₈H₁₅NO₆).



Mol	Chain	Residues	Atoms				ZeroOcc	AltConf
6	A	1	Total	C	N	O	0	0
			14	8	1	5		
6	C	1	Total	C	N	O	0	0
			14	8	1	5		
6	C	1	Total	C	N	O	0	0
			14	8	1	5		

Continued on next page...

Continued from previous page...

Mol	Chain	Residues	Atoms				ZeroOcc	AltConf
6	E	1	Total	C	N	O	0	0
			14	8	1	5		

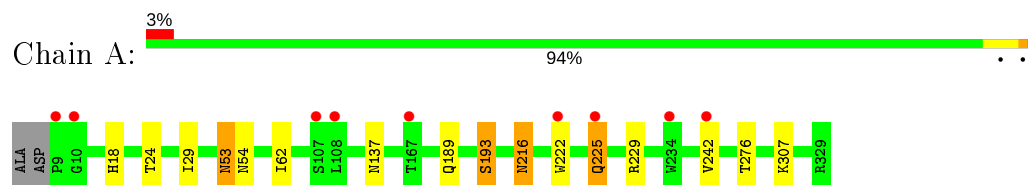
- Molecule 7 is water.

Mol	Chain	Residues	Atoms		ZeroOcc	AltConf
7	A	182	Total	O	0	0
			182	182		
7	B	82	Total	O	0	0
			82	82		
7	C	183	Total	O	0	0
			183	183		
7	D	88	Total	O	0	0
			88	88		
7	E	252	Total	O	0	0
			252	252		
7	F	88	Total	O	0	0
			88	88		

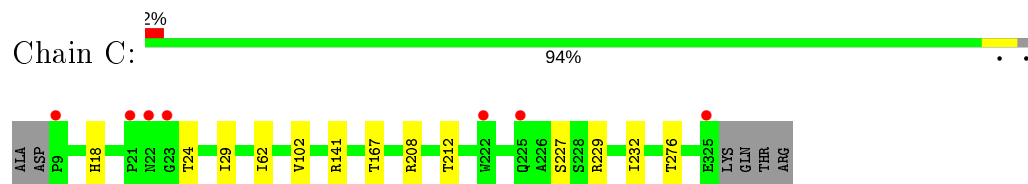
3 Residue-property plots [i](#)

These plots are drawn for all protein, RNA, DNA and oligosaccharide chains in the entry. The first graphic for a chain summarises the proportions of the various outlier classes displayed in the second graphic. The second graphic shows the sequence view annotated by issues in geometry and electron density. Residues are color-coded according to the number of geometric quality criteria for which they contain at least one outlier: green = 0, yellow = 1, orange = 2 and red = 3 or more. A red dot above a residue indicates a poor fit to the electron density ($RSRZ > 2$). Stretches of 2 or more consecutive residues without any outlier are shown as a green connector. Residues present in the sample, but not in the model, are shown in grey.

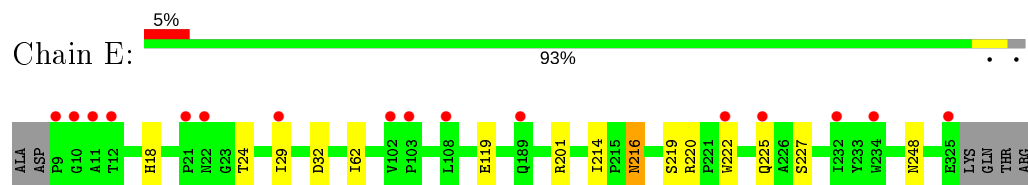
- Molecule 1: Hemagglutinin HA1 chain



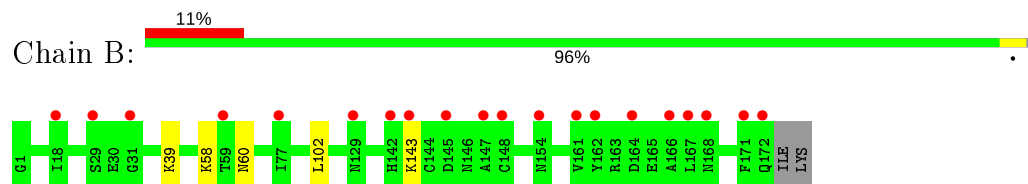
- Molecule 1: Hemagglutinin HA1 chain



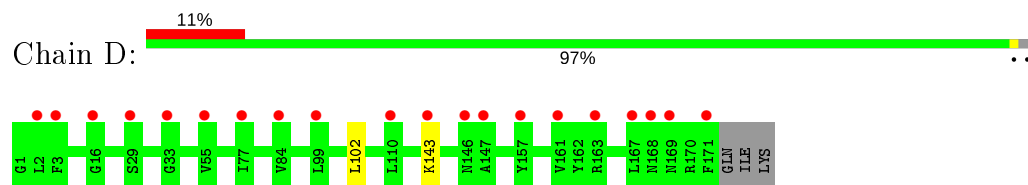
- Molecule 1: Hemagglutinin HA1 chain



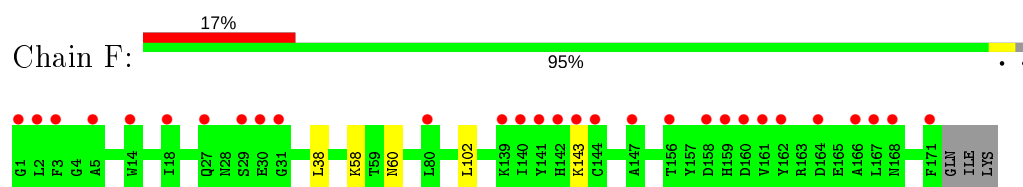
- Molecule 2: Hemagglutinin HA2 chain



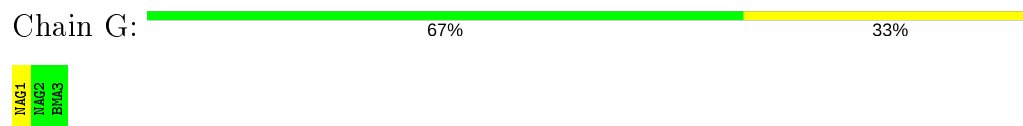
- Molecule 2: Hemagglutinin HA2 chain



- Molecule 2: Hemagglutinin HA2 chain



- Molecule 3: beta-D-mannopyranose-(1-4)-2-acetamido-2-deoxy-beta-D-glucopyranose-(1-4)-2-acetamido-2-deoxy-beta-D-glucopyranose



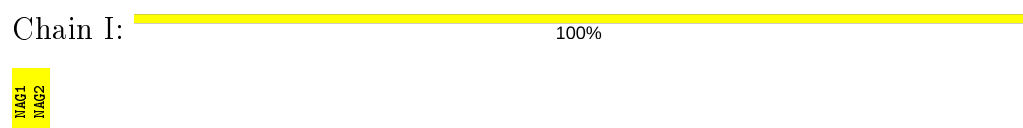
- Molecule 3: beta-D-mannopyranose-(1-4)-2-acetamido-2-deoxy-beta-D-glucopyranose-(1-4)-2-acetamido-2-deoxy-beta-D-glucopyranose



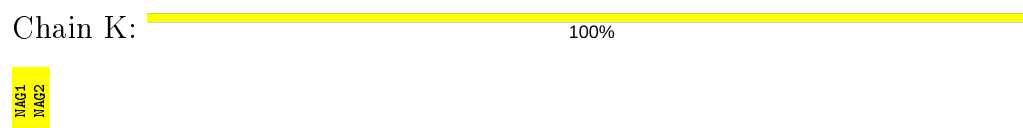
- Molecule 3: beta-D-mannopyranose-(1-4)-2-acetamido-2-deoxy-beta-D-glucopyranose-(1-4)-2-acetamido-2-deoxy-beta-D-glucopyranose



- Molecule 4: 2-acetamido-2-deoxy-beta-D-glucopyranose-(1-4)-2-acetamido-2-deoxy-beta-D-glucopyranose



- Molecule 4: 2-acetamido-2-deoxy-beta-D-glucopyranose-(1-4)-2-acetamido-2-deoxy-beta-D-glucopyranose



- Molecule 4: 2-acetamido-2-deoxy-beta-D-glucopyranose-(1-4)-2-acetamido-2-deoxy-beta-D-glucopyranose





MAG1
MAG2

- Molecule 5: alpha-D-mannopyranose-(1-3)-[alpha-D-mannopyranose-(1-6)]beta-D-mannopyranose-(1-4)-2-acetamido-2-deoxy-beta-D-glucopyranose-(1-4)-2-acetamido-2-deoxy-beta-D-glucopyranose

Chain L:



100%



MAG1
MAG2
BMA3
MAN4
MAN5

4 Data and refinement statistics

Property	Value	Source
Space group	C 1 2 1	Depositor
Cell constants a, b, c, α , β , γ	209.74Å 131.20Å 72.44Å 90.00° 98.35° 90.00°	Depositor
Resolution (Å)	50.00 – 2.15 42.79 – 2.15	Depositor EDS
% Data completeness (in resolution range)	99.4 (50.00-2.15) 99.4 (42.79-2.15)	Depositor EDS
R_{merge}	(Not available)	Depositor
R_{sym}	0.08	Depositor
$\langle I/\sigma(I) \rangle$ ¹	1.68 (at 2.14Å)	Xtriage
Refinement program	REFMAC 5.8.0155	Depositor
R, R_{free}	0.176 , 0.199 0.182 , 0.202	Depositor DCC
R_{free} test set	5341 reflections (5.09%)	wwPDB-VP
Wilson B-factor (Å ²)	38.8	Xtriage
Anisotropy	0.343	Xtriage
Bulk solvent k_{sol} (e/Å ³), B_{sol} (Å ²)	0.33 , 46.0	EDS
L-test for twinning ²	$\langle L \rangle = 0.49$, $\langle L^2 \rangle = 0.32$	Xtriage
Estimated twinning fraction	No twinning to report.	Xtriage
F_o, F_c correlation	0.96	EDS
Total number of atoms	12719	wwPDB-VP
Average B, all atoms (Å ²)	52.0	wwPDB-VP

Xtriage's analysis on translational NCS is as follows: *The largest off-origin peak in the Patterson function is 3.46% of the height of the origin peak. No significant pseudotranslation is detected.*

¹Intensities estimated from amplitudes.

²Theoretical values of $\langle |L| \rangle$, $\langle L^2 \rangle$ for acentric reflections are 0.5, 0.333 respectively for untwinned datasets, and 0.375, 0.2 for perfectly twinned datasets.

5 Model quality ⓘ

5.1 Standard geometry ⓘ

Bond lengths and bond angles in the following residue types are not validated in this section: BMA, NAG, MAN

The Z score for a bond length (or angle) is the number of standard deviations the observed value is removed from the expected value. A bond length (or angle) with $|Z| > 5$ is considered an outlier worth inspection. RMSZ is the root-mean-square of all Z scores of the bond lengths (or angles).

Mol	Chain	Bond lengths		Bond angles	
		RMSZ	# Z >5	RMSZ	# Z >5
1	A	0.45	0/2538	0.69	1/3457 (0.0%)
1	C	0.44	0/2502	0.69	1/3410 (0.0%)
1	E	0.48	0/2502	0.69	0/3410
2	B	0.40	0/1415	0.64	0/1902
2	D	0.41	0/1406	0.63	0/1890
2	F	0.40	0/1406	0.65	0/1890
All	All	0.44	0/11769	0.67	2/15959 (0.0%)

There are no bond length outliers.

All (2) bond angle outliers are listed below:

Mol	Chain	Res	Type	Atoms	Z	Observed(°)	Ideal(°)
1	C	229	ARG	NE-CZ-NH2	-6.11	117.25	120.30
1	A	229	ARG	NE-CZ-NH1	5.52	123.06	120.30

There are no chirality outliers.

There are no planarity outliers.

5.2 Too-close contacts ⓘ

In the following table, the Non-H and H(model) columns list the number of non-hydrogen atoms and hydrogen atoms in the chain respectively. The H(added) column lists the number of hydrogen atoms added and optimized by MolProbity. The Clashes column lists the number of clashes within the asymmetric unit, whereas Symm-Clashes lists symmetry related clashes.

Mol	Chain	Non-H	H(model)	H(added)	Clashes	Symm-Clashes
1	A	2481	0	2430	7	0
1	C	2445	0	2389	10	0
1	E	2445	0	2390	9	1

Continued on next page...

Continued from previous page...

Mol	Chain	Non-H	H(model)	H(added)	Clashes	Symm-Clashes
2	B	1391	0	1307	1	0
2	D	1382	0	1299	1	0
2	F	1382	0	1299	1	0
3	G	39	0	34	0	0
3	H	39	0	34	0	0
3	J	39	0	34	1	0
4	I	28	0	25	0	0
4	K	28	0	25	0	0
4	M	28	0	25	0	0
5	L	61	0	52	0	0
6	A	14	0	13	0	0
6	C	28	0	26	0	0
6	E	14	0	13	0	0
7	A	182	0	0	0	0
7	B	82	0	0	0	0
7	C	183	0	0	0	0
7	D	88	0	0	0	0
7	E	252	0	0	0	0
7	F	88	0	0	0	0
All	All	12719	0	11395	19	1

The all-atom clashscore is defined as the number of clashes found per 1000 atoms (including hydrogen atoms). The all-atom clashscore for this structure is 1.

All (19) close contacts within the same asymmetric unit are listed below, sorted by their clash magnitude.

Atom-1	Atom-2	Interatomic distance (Å)	Clash overlap (Å)
1:C:212:THR:HG21	1:E:216:ASN:HB3	1.61	0.82
1:A:189:GLN:O	1:A:193:SER:OG	2.06	0.73
1:A:216:ASN:HD21	1:E:214:ILE:HD11	1.55	0.72
1:C:212:THR:CG2	1:E:216:ASN:HB3	2.22	0.70
1:C:29:ILE:HD11	2:D:102:LEU:HD23	1.80	0.64
1:A:137:ASN:C	1:A:225:GLN:HE22	2.05	0.60
1:C:212:THR:CB	1:E:216:ASN:HB3	2.34	0.58
1:A:29:ILE:HD11	2:B:102:LEU:HD23	1.87	0.57
1:E:201:ARG:HG2	1:E:248:ASN:OD1	2.07	0.54
1:E:29:ILE:HD11	2:F:102:LEU:HD23	1.91	0.51
1:C:167:THR:OG1	3:J:1:NAG:H62	2.14	0.47
1:C:212:THR:CB	1:E:216:ASN:CB	2.95	0.44
1:C:212:THR:HB	1:E:216:ASN:CB	2.49	0.42
1:A:53:ASN:HD22	1:A:54:ASN:N	2.18	0.42

Continued on next page...

Continued from previous page...

Atom-1	Atom-2	Interatomic distance (Å)	Clash overlap (Å)
1:A:53:ASN:C	1:A:53:ASN:HD22	2.23	0.42
1:A:222:TRP:CZ2	1:A:225:GLN:HA	2.55	0.41
1:C:212:THR:HB	1:E:216:ASN:HB3	2.03	0.41
1:C:141:ARG:HG2	1:C:141:ARG:HH11	1.86	0.41
1:C:102:VAL:HG22	1:C:232:ILE:HB	2.03	0.41

All (1) symmetry-related close contacts are listed below. The label for Atom-2 includes the symmetry operator and encoded unit-cell translations to be applied.

Atom-1	Atom-2	Interatomic distance (Å)	Clash overlap (Å)
1:E:119:GLU:OE2	1:E:119:GLU:OE2[2_555]	2.18	0.02

5.3 Torsion angles ⓘ

5.3.1 Protein backbone ⓘ

In the following table, the Percentiles column shows the percent Ramachandran outliers of the chain as a percentile score with respect to all X-ray entries followed by that with respect to entries of similar resolution.

The Analysed column shows the number of residues for which the backbone conformation was analysed, and the total number of residues.

Mol	Chain	Analysed	Favoured	Allowed	Outliers	Percentiles	
1	A	319/323 (99%)	312 (98%)	6 (2%)	1 (0%)	41	37
1	C	315/323 (98%)	309 (98%)	5 (2%)	1 (0%)	41	37
1	E	315/323 (98%)	308 (98%)	6 (2%)	1 (0%)	41	37
2	B	170/174 (98%)	159 (94%)	11 (6%)	0	100	100
2	D	169/174 (97%)	159 (94%)	10 (6%)	0	100	100
2	F	169/174 (97%)	159 (94%)	10 (6%)	0	100	100
All	All	1457/1491 (98%)	1406 (96%)	48 (3%)	3 (0%)	47	46

All (3) Ramachandran outliers are listed below:

Mol	Chain	Res	Type
1	C	62	ILE
1	E	62	ILE
1	A	62	ILE

5.3.2 Protein sidechains ⓘ

In the following table, the Percentiles column shows the percent sidechain outliers of the chain as a percentile score with respect to all X-ray entries followed by that with respect to entries of similar resolution.

The Analysed column shows the number of residues for which the sidechain conformation was analysed, and the total number of residues.

Mol	Chain	Analysed	Rotameric	Outliers	Percentiles	
1	A	282/283 (100%)	273 (97%)	9 (3%)	39	38
1	C	278/283 (98%)	273 (98%)	5 (2%)	59	63
1	E	278/283 (98%)	269 (97%)	9 (3%)	39	38
2	B	146/148 (99%)	142 (97%)	4 (3%)	44	46
2	D	145/148 (98%)	144 (99%)	1 (1%)	84	89
2	F	145/148 (98%)	141 (97%)	4 (3%)	43	44
All	All	1274/1293 (98%)	1242 (98%)	32 (2%)	47	49

All (32) residues with a non-rotameric sidechain are listed below:

Mol	Chain	Res	Type
1	A	18	HIS
1	A	24	THR
1	A	53	ASN
1	A	193	SER
1	A	216	ASN
1	A	225	GLN
1	A	242	VAL
1	A	276	THR
1	A	307	LYS
2	B	39	LYS
2	B	58	LYS
2	B	60	ASN
2	B	143	LYS
1	C	18	HIS
1	C	24	THR
1	C	208	ARG
1	C	227	SER
1	C	276	THR
2	D	143	LYS
1	E	18	HIS
1	E	24	THR
1	E	32	ASP

Continued on next page...

Continued from previous page...

Mol	Chain	Res	Type
1	E	216	ASN
1	E	219	SER
1	E	220	ARG
1	E	222	TRP
1	E	225	GLN
1	E	227	SER
2	F	38	LEU
2	F	58	LYS
2	F	60	ASN
2	F	143	LYS

Some sidechains can be flipped to improve hydrogen bonding and reduce clashes. All (13) such sidechains are listed below:

Mol	Chain	Res	Type
1	A	22	ASN
1	A	53	ASN
1	A	216	ASN
1	A	225	GLN
2	B	53	ASN
1	C	33	GLN
1	C	225	GLN
2	D	53	ASN
1	E	22	ASN
1	E	33	GLN
1	E	216	ASN
1	E	225	GLN
2	F	53	ASN

5.3.3 RNA [i](#)

There are no RNA molecules in this entry.

5.4 Non-standard residues in protein, DNA, RNA chains [i](#)

There are no non-standard protein/DNA/RNA residues in this entry.

5.5 Carbohydrates [i](#)

20 monosaccharides are modelled in this entry.

In the following table, the Counts columns list the number of bonds (or angles) for which Mogul statistics could be retrieved, the number of bonds (or angles) that are observed in the model and the number of bonds (or angles) that are defined in the Chemical Component Dictionary. The Link column lists molecule types, if any, to which the group is linked. The Z score for a bond length (or angle) is the number of standard deviations the observed value is removed from the expected value. A bond length (or angle) with $|Z| > 2$ is considered an outlier worth inspection. RMSZ is the root-mean-square of all Z scores of the bond lengths (or angles).

Mol	Type	Chain	Res	Link	Bond lengths			Bond angles		
					Counts	RMSZ	$\# Z > 2$	Counts	RMSZ	$\# Z > 2$
3	NAG	G	1	1,3	14,14,15	0.64	1 (7%)	17,19,21	1.22	1 (5%)
3	NAG	G	2	3	14,14,15	0.26	0	17,19,21	0.74	0
3	BMA	G	3	3	11,11,12	0.27	0	15,15,17	0.61	0
3	NAG	H	1	1,3	14,14,15	0.38	0	17,19,21	0.93	1 (5%)
3	NAG	H	2	3	14,14,15	0.26	0	17,19,21	1.13	1 (5%)
3	BMA	H	3	3	11,11,12	0.43	0	15,15,17	0.98	0
4	NAG	I	1	1,4	14,14,15	0.53	0	17,19,21	1.15	2 (11%)
4	NAG	I	2	4	14,14,15	0.40	0	17,19,21	1.37	1 (5%)
3	NAG	J	1	1,3	14,14,15	0.42	0	17,19,21	0.72	0
3	NAG	J	2	3	14,14,15	0.48	0	17,19,21	1.05	0
3	BMA	J	3	3	11,11,12	0.75	0	15,15,17	1.55	2 (13%)
4	NAG	K	1	1,4	14,14,15	0.39	0	17,19,21	0.81	1 (5%)
4	NAG	K	2	4	14,14,15	0.37	0	17,19,21	2.02	3 (17%)
5	NAG	L	1	1,5	14,14,15	0.30	0	17,19,21	0.85	1 (5%)
5	NAG	L	2	5	14,14,15	0.27	0	17,19,21	1.07	2 (11%)
5	BMA	L	3	5	11,11,12	0.37	0	15,15,17	1.39	1 (6%)
5	MAN	L	4	5	11,11,12	0.36	0	15,15,17	1.43	2 (13%)
5	MAN	L	5	5	11,11,12	0.40	0	15,15,17	1.26	2 (13%)
4	NAG	M	1	1,4	14,14,15	0.38	0	17,19,21	0.83	0
4	NAG	M	2	4	14,14,15	0.39	0	17,19,21	1.63	3 (17%)

In the following table, the Chirals column lists the number of chiral outliers, the number of chiral centers analysed, the number of these observed in the model and the number defined in the Chemical Component Dictionary. Similar counts are reported in the Torsion and Rings columns. '-' means no outliers of that kind were identified.

Mol	Type	Chain	Res	Link	Chirals	Torsions	Rings
3	NAG	G	1	1,3	-	2/6/23/26	0/1/1/1
3	NAG	G	2	3	-	0/6/23/26	0/1/1/1
3	BMA	G	3	3	-	2/2/19/22	0/1/1/1
3	NAG	H	1	1,3	-	0/6/23/26	0/1/1/1

Continued on next page...

Continued from previous page...

Mol	Type	Chain	Res	Link	Chirals	Torsions	Rings
3	NAG	H	2	3	-	0/6/23/26	0/1/1/1
3	BMA	H	3	3	-	0/2/19/22	0/1/1/1
4	NAG	I	1	1,4	-	0/6/23/26	0/1/1/1
4	NAG	I	2	4	-	2/6/23/26	0/1/1/1
3	NAG	J	1	1,3	-	0/6/23/26	0/1/1/1
3	NAG	J	2	3	-	2/6/23/26	0/1/1/1
3	BMA	J	3	3	-	2/2/19/22	0/1/1/1
4	NAG	K	1	1,4	-	0/6/23/26	0/1/1/1
4	NAG	K	2	4	-	2/6/23/26	0/1/1/1
5	NAG	L	1	1,5	-	0/6/23/26	0/1/1/1
5	NAG	L	2	5	-	0/6/23/26	0/1/1/1
5	BMA	L	3	5	-	2/2/19/22	0/1/1/1
5	MAN	L	4	5	-	0/2/19/22	0/1/1/1
5	MAN	L	5	5	-	1/2/19/22	0/1/1/1
4	NAG	M	1	1,4	-	0/6/23/26	0/1/1/1
4	NAG	M	2	4	-	2/6/23/26	0/1/1/1

All (1) bond length outliers are listed below:

Mol	Chain	Res	Type	Atoms	Z	Observed(Å)	Ideal(Å)
3	G	1	NAG	C1-C2	2.03	1.55	1.52

All (23) bond angle outliers are listed below:

Mol	Chain	Res	Type	Atoms	Z	Observed(°)	Ideal(°)
4	K	2	NAG	C1-O5-C5	7.06	121.76	112.19
5	L	3	BMA	O5-C5-C6	4.77	114.68	107.20
4	I	2	NAG	C1-O5-C5	4.38	118.12	112.19
4	M	2	NAG	C1-O5-C5	4.36	118.09	112.19
3	G	1	NAG	O5-C1-C2	-3.93	105.08	111.29
3	H	2	NAG	C1-O5-C5	3.66	117.15	112.19
3	J	3	BMA	C1-C2-C3	3.62	114.11	109.67
4	M	2	NAG	O5-C5-C6	3.50	112.69	107.20
3	J	3	BMA	C2-C3-C4	3.26	116.54	110.89
5	L	4	MAN	C1-O5-C5	3.21	116.55	112.19
5	L	2	NAG	C1-O5-C5	3.08	116.36	112.19
5	L	5	MAN	C2-C3-C4	2.58	115.36	110.89
4	K	2	NAG	O5-C5-C4	2.51	116.94	110.83
4	K	2	NAG	C4-C3-C2	-2.49	107.37	111.02
3	H	1	NAG	O5-C1-C2	-2.45	107.42	111.29
4	I	1	NAG	C6-C5-C4	2.45	118.74	113.00

Continued on next page...

Continued from previous page...

Mol	Chain	Res	Type	Atoms	Z	Observed(°)	Ideal(°)
5	L	5	MAN	C3-C4-C5	2.39	114.50	110.24
4	K	1	NAG	C1-C2-N2	2.31	114.44	110.49
5	L	1	NAG	O5-C1-C2	-2.30	107.65	111.29
5	L	4	MAN	C1-C2-C3	2.27	112.46	109.67
4	I	1	NAG	C3-C4-C5	-2.06	106.57	110.24
4	M	2	NAG	C3-C4-C5	2.04	113.87	110.24
5	L	2	NAG	C1-C2-N2	2.03	113.96	110.49

There are no chirality outliers.

All (17) torsion outliers are listed below:

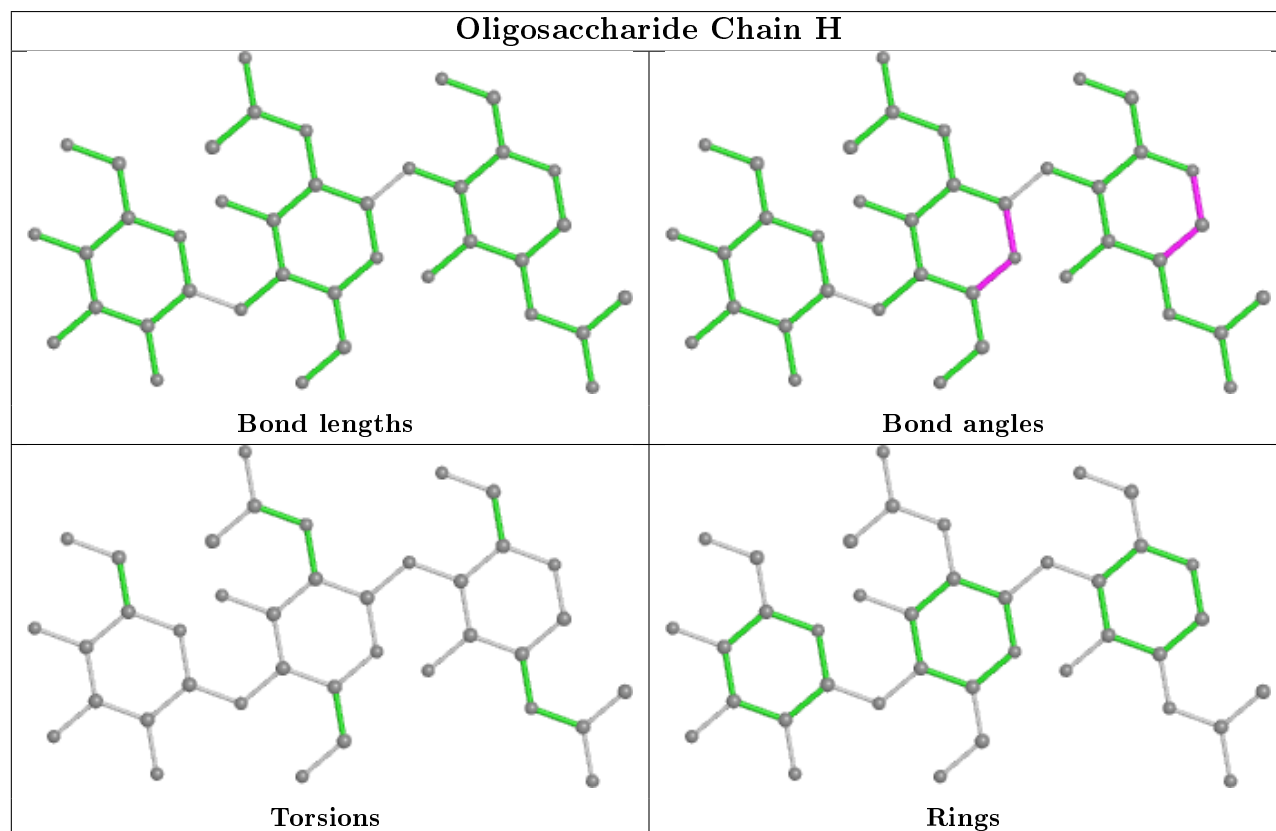
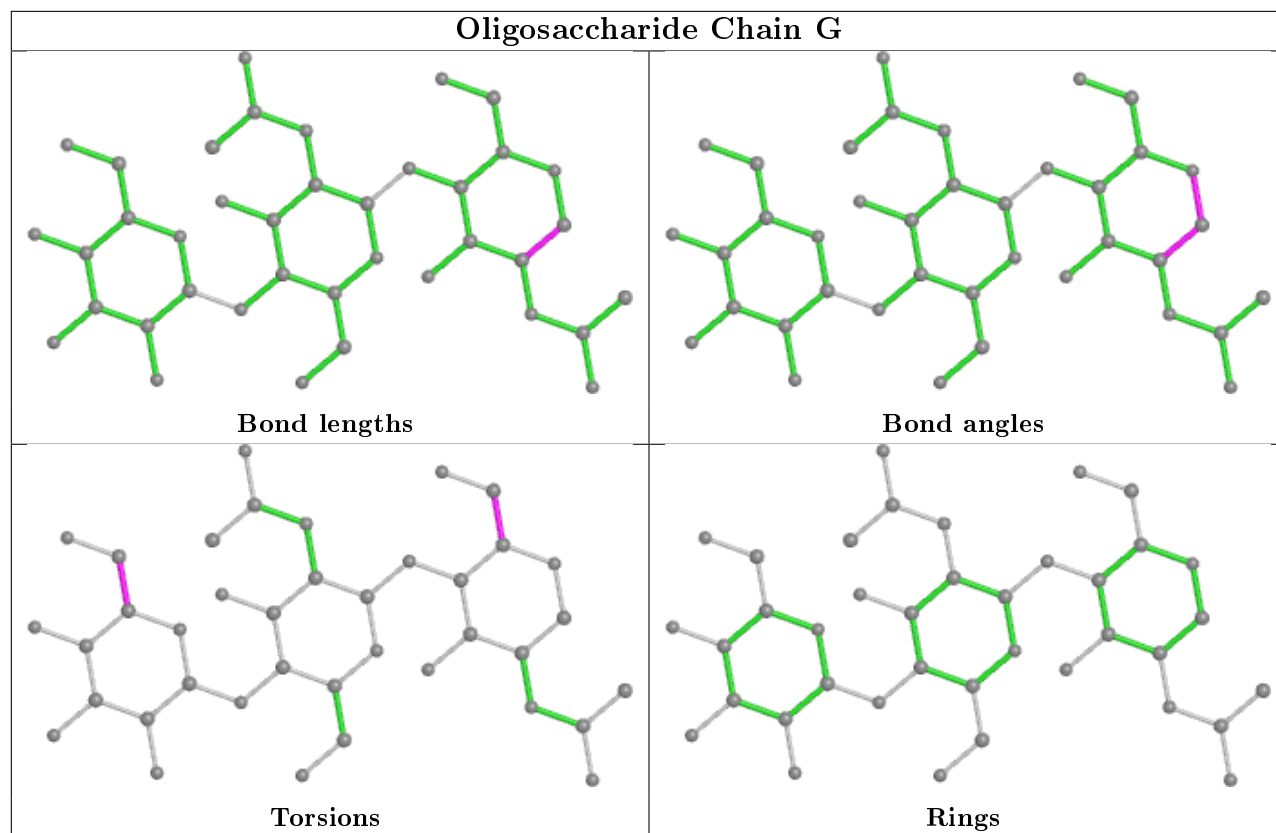
Mol	Chain	Res	Type	Atoms
4	M	2	NAG	O5-C5-C6-O6
3	J	3	BMA	O5-C5-C6-O6
5	L	3	BMA	O5-C5-C6-O6
4	I	2	NAG	O5-C5-C6-O6
4	M	2	NAG	C4-C5-C6-O6
5	L	3	BMA	C4-C5-C6-O6
4	K	2	NAG	C4-C5-C6-O6
3	J	3	BMA	C4-C5-C6-O6
4	I	2	NAG	C4-C5-C6-O6
5	L	5	MAN	O5-C5-C6-O6
3	G	3	BMA	C4-C5-C6-O6
3	J	2	NAG	C4-C5-C6-O6
3	G	1	NAG	C4-C5-C6-O6
3	G	3	BMA	O5-C5-C6-O6
4	K	2	NAG	O5-C5-C6-O6
3	J	2	NAG	O5-C5-C6-O6
3	G	1	NAG	O5-C5-C6-O6

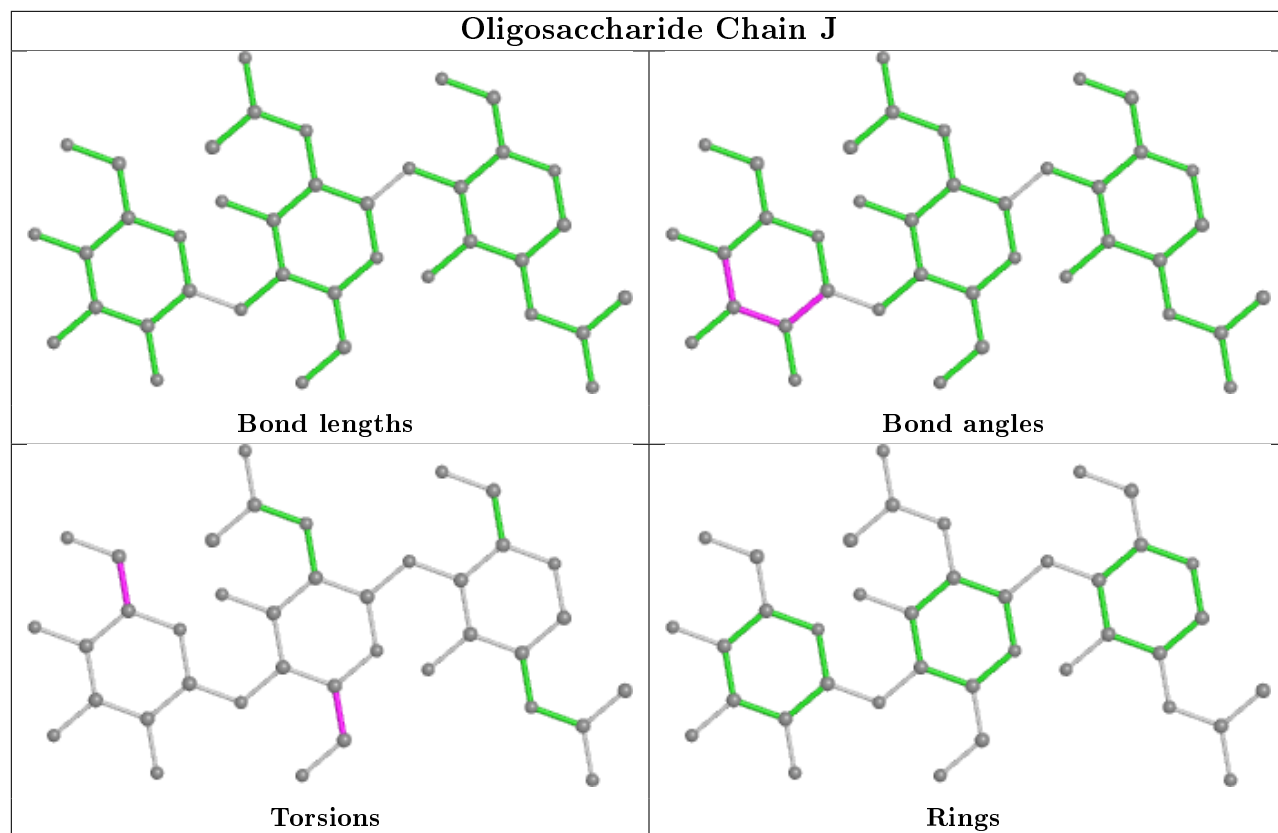
There are no ring outliers.

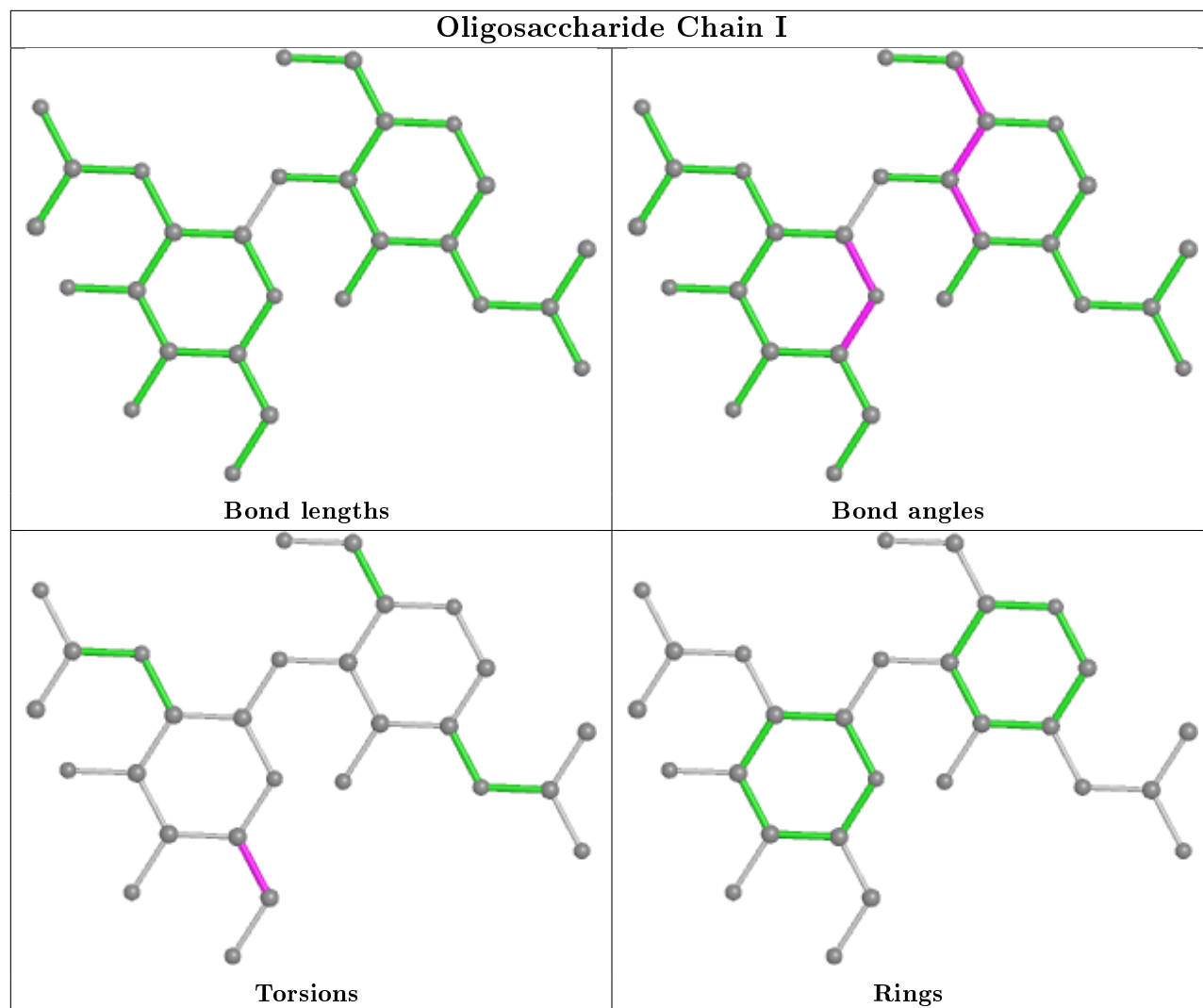
1 monomer is involved in 1 short contact:

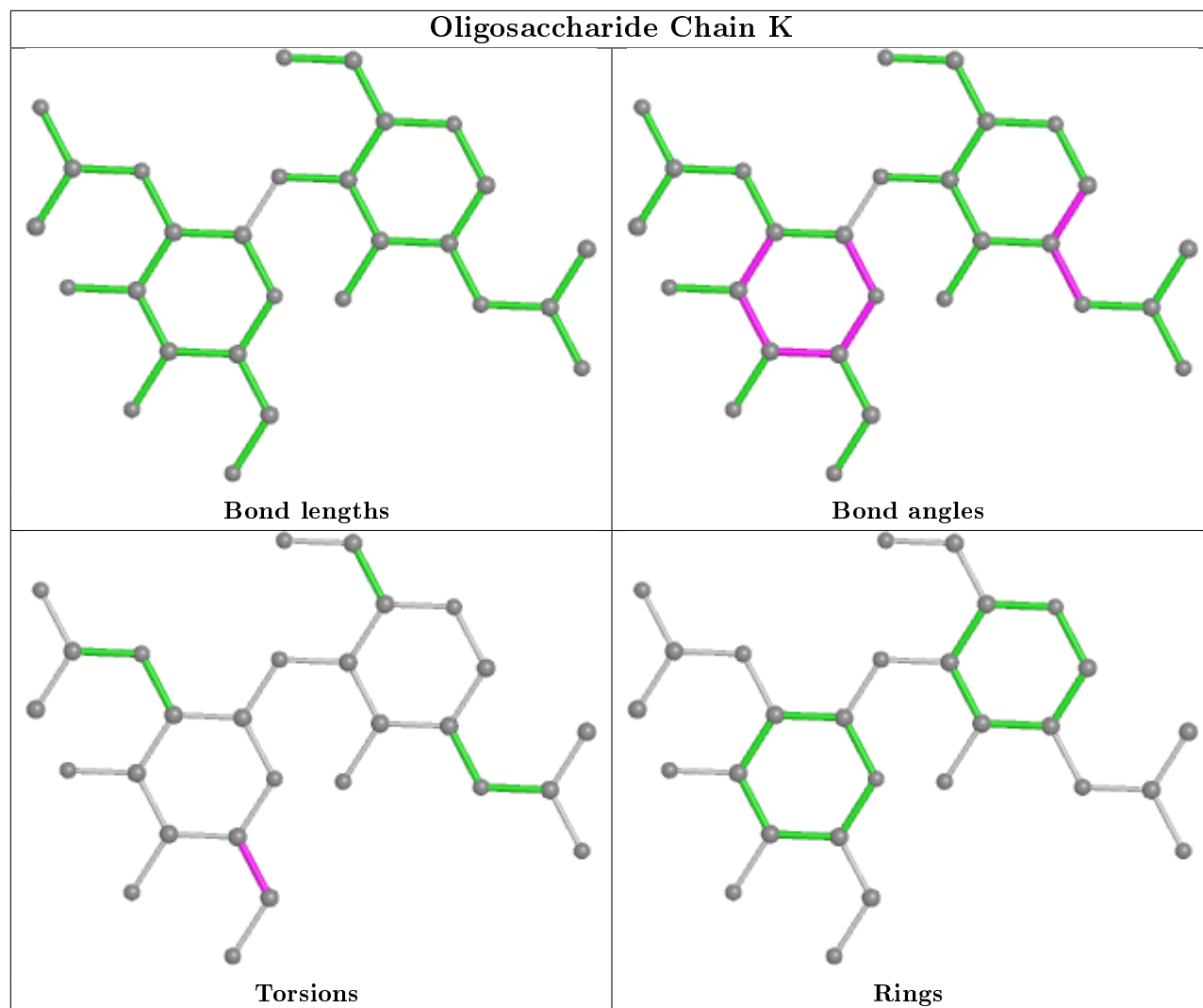
Mol	Chain	Res	Type	Clashes	Symm-Clashes
3	J	1	NAG	1	0

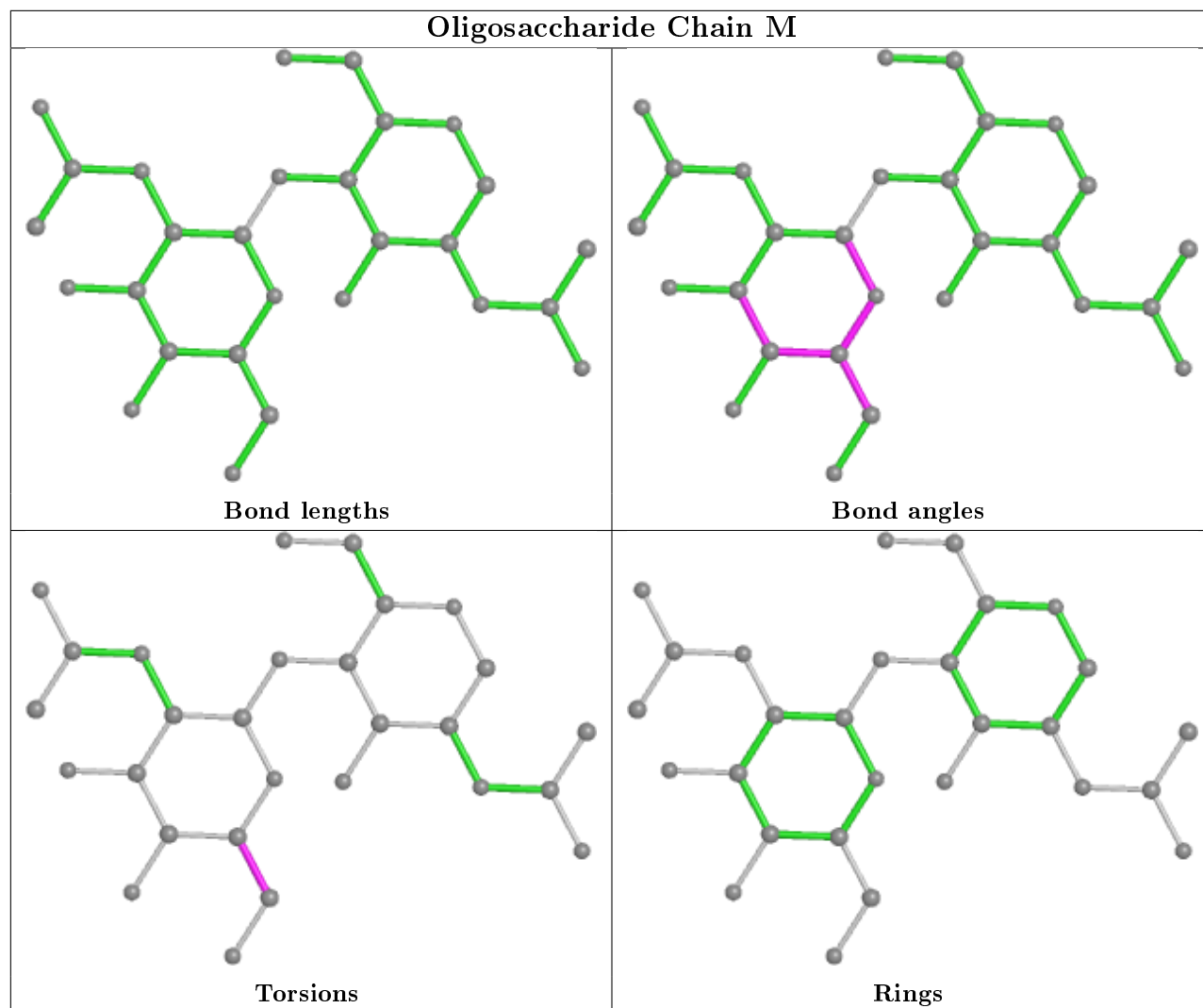
The following is a two-dimensional graphical depiction of Mogul quality analysis of bond lengths, bond angles, torsion angles, and ring geometry for oligosaccharide.

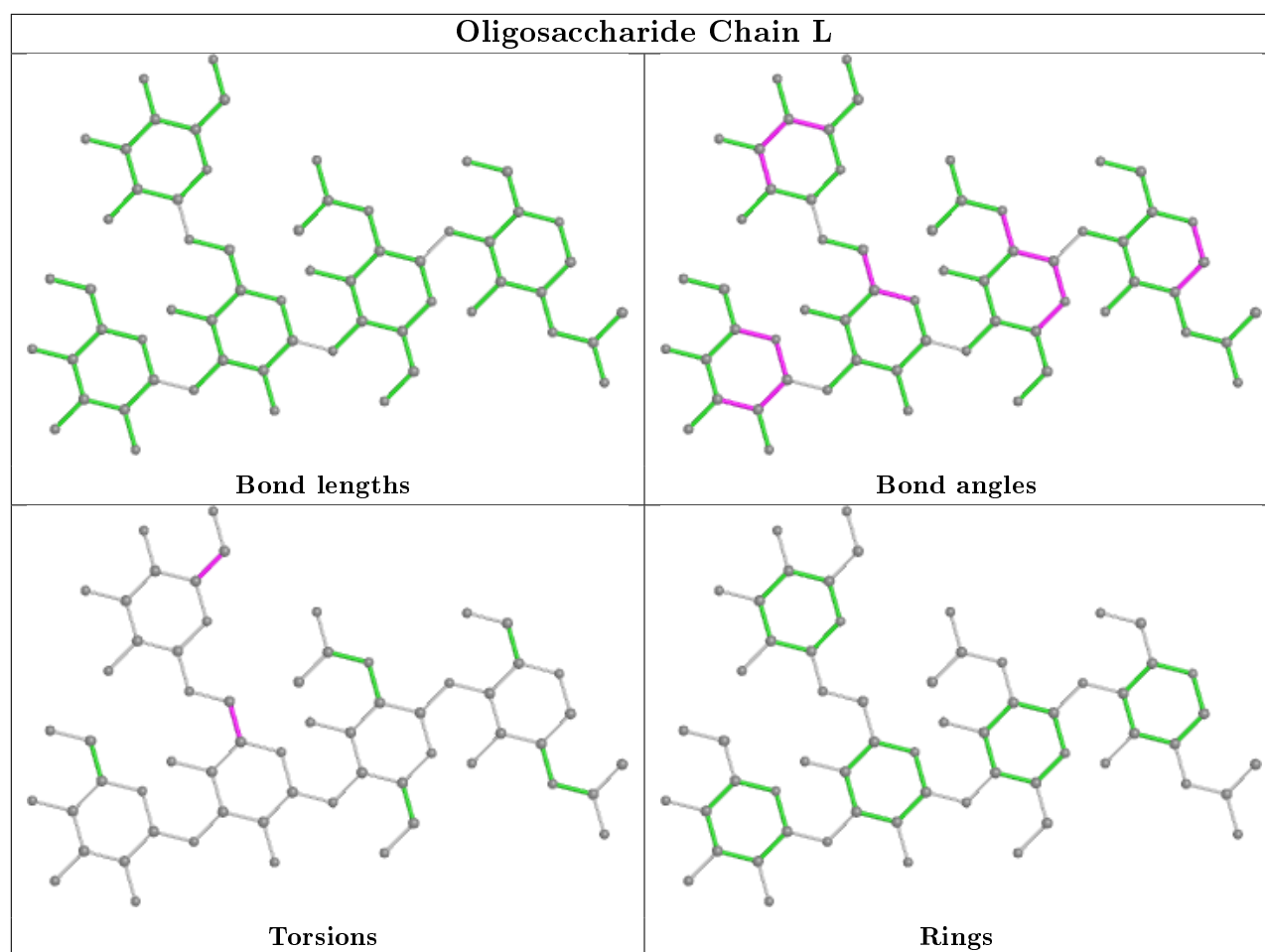












5.6 Ligand geometry [i](#)

4 ligands are modelled in this entry.

In the following table, the Counts columns list the number of bonds (or angles) for which Mogul statistics could be retrieved, the number of bonds (or angles) that are observed in the model and the number of bonds (or angles) that are defined in the Chemical Component Dictionary. The Link column lists molecule types, if any, to which the group is linked. The Z score for a bond length (or angle) is the number of standard deviations the observed value is removed from the expected value. A bond length (or angle) with $|Z| > 2$ is considered an outlier worth inspection. RMSZ is the root-mean-square of all Z scores of the bond lengths (or angles).

Mol	Type	Chain	Res	Link	Bond lengths			Bond angles		
					Counts	RMSZ	$\# Z > 2$	Counts	RMSZ	$\# Z > 2$
6	NAG	E	501	1	14,14,15	0.47	0	17,19,21	1.29	1 (5%)
6	NAG	C	502	1	14,14,15	0.58	0	17,19,21	1.44	4 (23%)
6	NAG	A	404	1	14,14,15	0.48	0	17,19,21	1.36	2 (11%)
6	NAG	C	501	1	14,14,15	0.68	0	17,19,21	2.16	5 (29%)

In the following table, the Chirals column lists the number of chiral outliers, the number of chiral centers analysed, the number of these observed in the model and the number defined in the Chemical Component Dictionary. Similar counts are reported in the Torsion and Rings columns. '-' means no outliers of that kind were identified.

Mol	Type	Chain	Res	Link	Chirals	Torsions	Rings
6	NAG	E	501	1	-	0/6/23/26	0/1/1/1
6	NAG	C	502	1	-	2/6/23/26	0/1/1/1
6	NAG	A	404	1	-	2/6/23/26	0/1/1/1
6	NAG	C	501	1	-	2/6/23/26	0/1/1/1

There are no bond length outliers.

All (12) bond angle outliers are listed below:

Mol	Chain	Res	Type	Atoms	Z	Observed(°)	Ideal(°)
6	C	501	NAG	C1-O5-C5	5.98	120.29	112.19
6	E	501	NAG	C1-O5-C5	4.67	118.52	112.19
6	A	404	NAG	O5-C5-C6	3.17	112.18	107.20
6	A	404	NAG	C1-O5-C5	3.13	116.44	112.19
6	C	501	NAG	C3-C4-C5	3.04	115.66	110.24
6	C	501	NAG	O5-C1-C2	3.02	116.05	111.29
6	C	501	NAG	C2-N2-C7	2.67	126.71	122.90
6	C	502	NAG	C2-N2-C7	2.61	126.61	122.90
6	C	502	NAG	C1-C2-N2	2.50	114.76	110.49
6	C	501	NAG	C4-C3-C2	2.39	114.53	111.02
6	C	502	NAG	C1-O5-C5	2.37	115.40	112.19
6	C	502	NAG	C3-C4-C5	2.10	113.99	110.24

There are no chirality outliers.

All (6) torsion outliers are listed below:

Mol	Chain	Res	Type	Atoms
6	A	404	NAG	O5-C5-C6-O6
6	C	501	NAG	C4-C5-C6-O6
6	A	404	NAG	C4-C5-C6-O6
6	C	502	NAG	O5-C5-C6-O6
6	C	502	NAG	C4-C5-C6-O6
6	C	501	NAG	O5-C5-C6-O6

There are no ring outliers.

No monomer is involved in short contacts.

5.7 Other polymers [i](#)

There are no such residues in this entry.

5.8 Polymer linkage issues [i](#)

There are no chain breaks in this entry.

6 Fit of model and data ⓘ

6.1 Protein, DNA and RNA chains ⓘ

In the following table, the column labelled ‘#RSRZ > 2’ contains the number (and percentage) of RSRZ outliers, followed by percent RSRZ outliers for the chain as percentile scores relative to all X-ray entries and entries of similar resolution. The OWAB column contains the minimum, median, 95th percentile and maximum values of the occupancy-weighted average B-factor per residue. The column labelled ‘Q < 0.9’ lists the number of (and percentage) of residues with an average occupancy less than 0.9.

Mol	Chain	Analysed	<RSRZ>	#RSRZ>2	OWAB(Å ²)	Q<0.9
1	A	321/323 (99%)	0.13	9 (2%) 53 62	29, 47, 76, 115	0
1	C	317/323 (98%)	0.05	7 (2%) 62 69	32, 47, 63, 113	0
1	E	317/323 (98%)	0.18	16 (5%) 28 37	25, 38, 65, 111	0
2	B	172/174 (98%)	0.64	20 (11%) 4 6	26, 62, 97, 114	0
2	D	171/174 (98%)	0.83	20 (11%) 4 6	28, 58, 94, 102	0
2	F	171/174 (98%)	0.88	29 (16%) 1 1	27, 64, 100, 109	0
All	All	1469/1491 (98%)	0.35	101 (6%) 16 23	25, 47, 91, 115	0

All (101) RSRZ outliers are listed below:

Mol	Chain	Res	Type	RSRZ
1	C	9	PRO	5.8
2	F	171	PHE	5.7
1	A	9	PRO	5.7
1	C	22	ASN	5.6
2	D	171	PHE	5.6
2	F	147	ALA	4.9
2	B	167	LEU	4.8
2	B	147	ALA	4.7
2	F	29	SER	4.6
2	F	143	LYS	4.5
1	E	22	ASN	4.5
2	F	167	LEU	4.5
2	F	141	TYR	4.4
2	F	161	VAL	4.4
1	C	325	GLU	4.2
2	B	171	PHE	4.2
1	A	10	GLY	4.0
2	D	147	ALA	3.9
2	B	164	ASP	3.6

Continued on next page...

Continued from previous page...

Mol	Chain	Res	Type	RSRZ
1	E	225	GLN	3.6
1	E	222	TRP	3.6
2	D	143	LYS	3.6
2	F	162	TYR	3.5
2	B	29	SER	3.5
2	B	31	GLY	3.5
2	F	156	THR	3.4
2	F	2	LEU	3.4
1	E	9	PRO	3.3
1	E	189	GLN	3.3
2	D	29	SER	3.2
2	F	164	ASP	3.2
2	F	31	GLY	3.2
1	A	225	GLN	3.2
1	E	325	GLU	3.2
2	F	168	ASN	3.1
2	F	166	ALA	3.1
2	F	3	PHE	3.1
2	B	161	VAL	3.0
2	F	160	ASP	3.0
2	B	142	HIS	2.9
2	D	167	LEU	2.8
2	F	144	CYS	2.8
2	F	139	LYS	2.8
2	D	33	GLY	2.7
1	A	107	SER	2.7
2	F	142	HIS	2.6
2	F	158	ASP	2.6
1	A	242	VAL	2.6
2	B	59	THR	2.5
1	E	21	PRO	2.5
2	D	84	VAL	2.5
2	F	18	ILE	2.5
2	F	5	ALA	2.5
1	E	102	VAL	2.4
2	B	172	GLN	2.4
2	F	14	TRP	2.4
2	B	148	CYS	2.4
2	F	80	LEU	2.4
1	A	222	TRP	2.4
1	E	234	TRP	2.4
2	D	3	PHE	2.3

Continued on next page...

Continued from previous page...

Mol	Chain	Res	Type	RSRZ
2	D	110	LEU	2.3
2	D	168	ASN	2.3
2	F	30	GLU	2.3
1	E	10	GLY	2.3
2	D	77	ILE	2.3
2	D	2	LEU	2.3
2	D	16	GLY	2.3
2	B	162	TYR	2.3
2	D	169	ASN	2.3
1	C	222	TRP	2.3
1	E	29	ILE	2.2
1	E	11	ALA	2.2
1	E	12	THR	2.2
2	D	55	VAL	2.2
2	B	154	ASN	2.2
2	F	140	ILE	2.2
1	C	21	PRO	2.2
1	C	23	GLY	2.2
2	F	27	GLN	2.2
2	D	157	TYR	2.2
2	D	146	ASN	2.2
2	B	145	ASP	2.2
1	A	234	TRP	2.1
1	E	108	LEU	2.1
1	A	108	LEU	2.1
2	B	143	LYS	2.1
2	F	159	HIS	2.1
2	B	18	ILE	2.1
1	C	225	GLN	2.1
2	D	163	ARG	2.1
2	F	1	GLY	2.1
2	B	166	ALA	2.1
2	B	168	ASN	2.1
2	B	77	ILE	2.0
2	B	129	ASN	2.0
1	A	167	THR	2.0
2	D	161	VAL	2.0
1	E	103	PRO	2.0
1	E	232	ILE	2.0
2	D	99	LEU	2.0

6.2 Non-standard residues in protein, DNA, RNA chains ⓘ

There are no non-standard protein/DNA/RNA residues in this entry.

6.3 Carbohydrates ⓘ

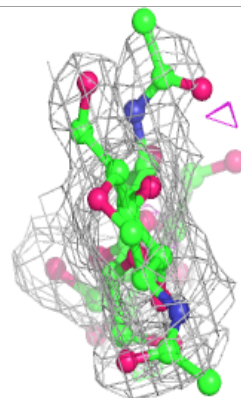
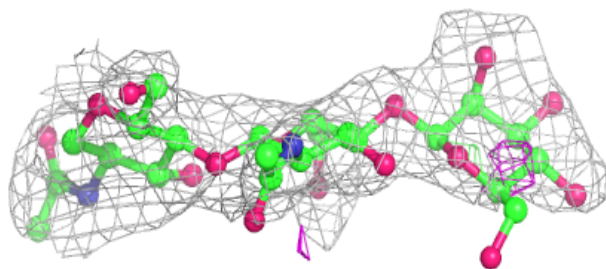
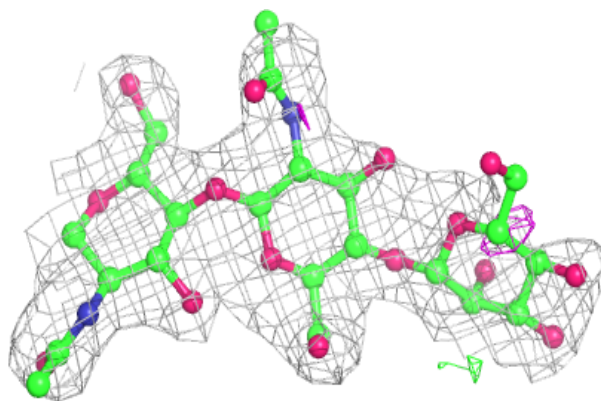
In the following table, the Atoms column lists the number of modelled atoms in the group and the number defined in the chemical component dictionary. The B-factors column lists the minimum, median, 95th percentile and maximum values of B factors of atoms in the group. The column labelled 'Q< 0.9' lists the number of atoms with occupancy less than 0.9.

Mol	Type	Chain	Res	Atoms	RSCC	RSR	B-factors(Å ²)	Q<0.9
3	BMA	J	3	11/12	0.64	0.23	83,85,87,87	0
3	BMA	G	3	11/12	0.67	0.32	91,94,98,99	0
5	MAN	L	5	11/12	0.69	0.38	86,89,92,93	0
4	NAG	I	2	14/15	0.77	0.35	69,73,80,83	0
4	NAG	K	2	14/15	0.80	0.25	69,73,78,81	0
4	NAG	M	2	14/15	0.81	0.30	72,77,86,86	0
5	MAN	L	4	11/12	0.82	0.29	85,89,91,93	0
3	BMA	H	3	11/12	0.82	0.26	83,85,88,91	0
3	NAG	G	2	14/15	0.89	0.30	81,87,89,94	0
3	NAG	J	2	14/15	0.89	0.15	57,63,72,79	0
5	BMA	L	3	11/12	0.90	0.23	72,79,83,87	0
3	NAG	G	1	14/15	0.92	0.17	58,67,71,75	0
5	NAG	L	2	14/15	0.93	0.16	47,54,57,64	0
4	NAG	M	1	14/15	0.94	0.15	42,48,57,64	0
4	NAG	I	1	14/15	0.94	0.19	41,46,51,62	0
3	NAG	H	1	14/15	0.94	0.22	57,63,70,72	0
3	NAG	H	2	14/15	0.95	0.25	66,71,75,78	0
3	NAG	J	1	14/15	0.95	0.10	45,51,57,60	0
4	NAG	K	1	14/15	0.96	0.12	44,51,55,62	0
5	NAG	L	1	14/15	0.97	0.18	42,46,49,52	0

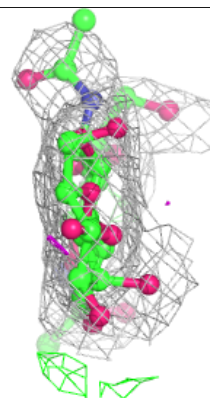
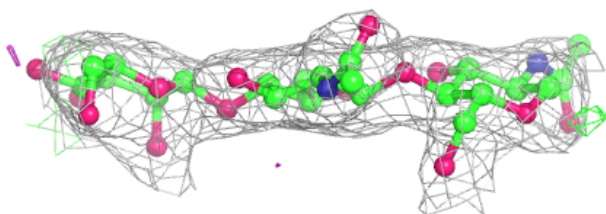
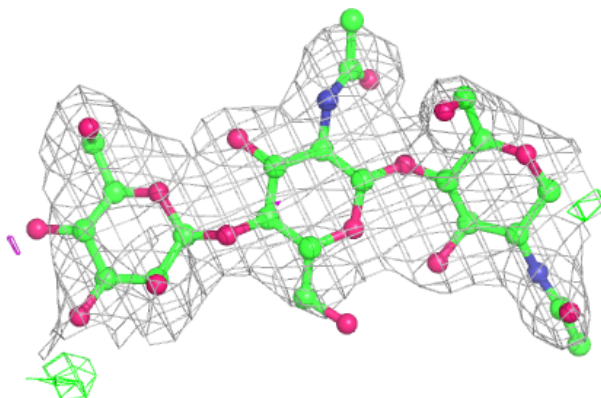
The following is a graphical depiction of the model fit to experimental electron density for oligosaccharide. Each fit is shown from different orientation to approximate a three-dimensional view.

Electron density around Chain G:

$2mF_o-DF_c$ (at 0.7 rmsd) in gray
 mF_o-DF_c (at 3 rmsd) in purple (negative)
and green (positive)

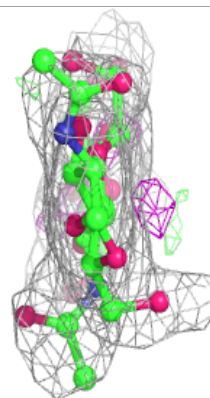
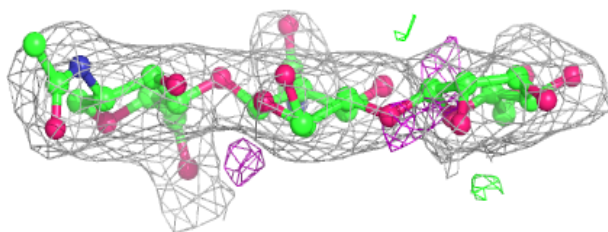
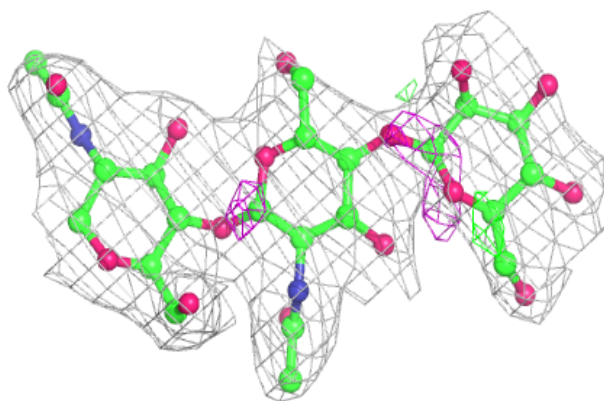
**Electron density around Chain H:**

$2mF_o-DF_c$ (at 0.7 rmsd) in gray
 mF_o-DF_c (at 3 rmsd) in purple (negative)
and green (positive)

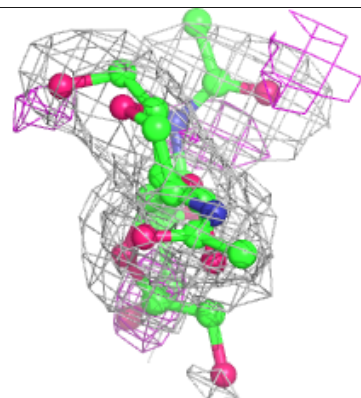
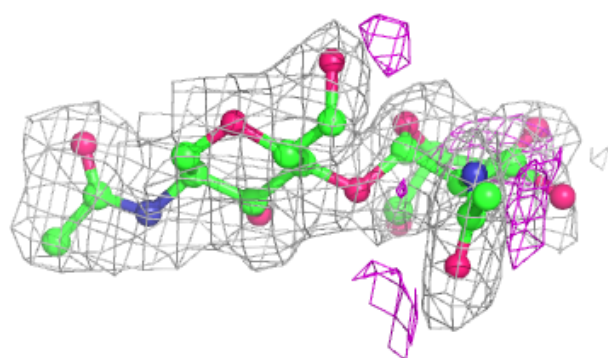
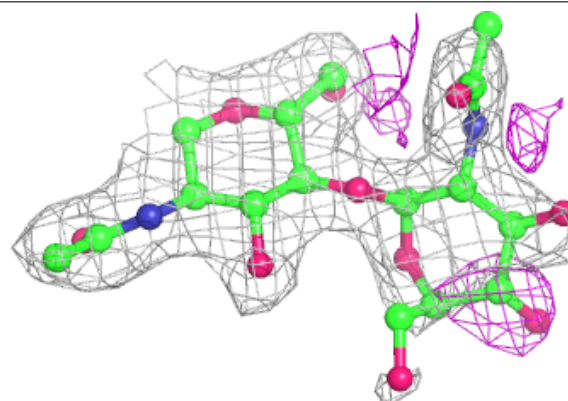


Electron density around Chain J:

$2mF_o-DF_c$ (at 0.7 rmsd) in gray
 mF_o-DF_c (at 3 rmsd) in purple (negative)
and green (positive)

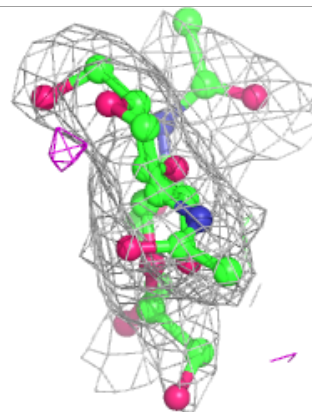
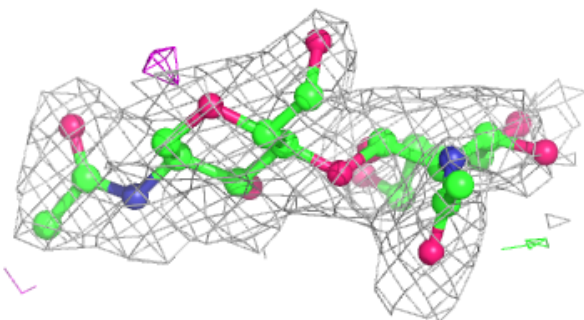
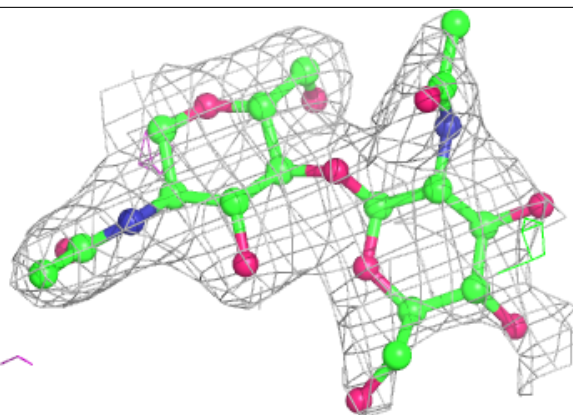
**Electron density around Chain I:**

$2mF_o-DF_c$ (at 0.7 rmsd) in gray
 mF_o-DF_c (at 3 rmsd) in purple (negative)
and green (positive)

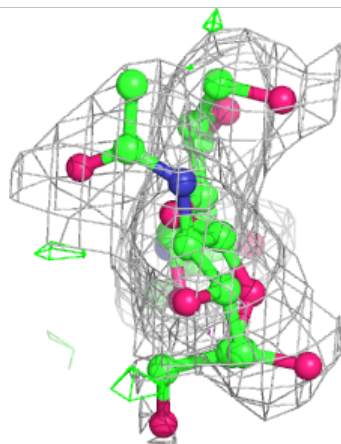
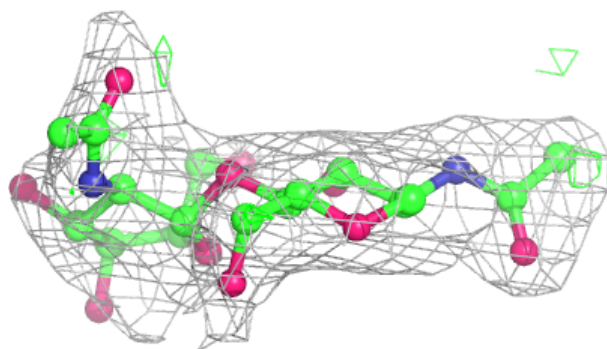
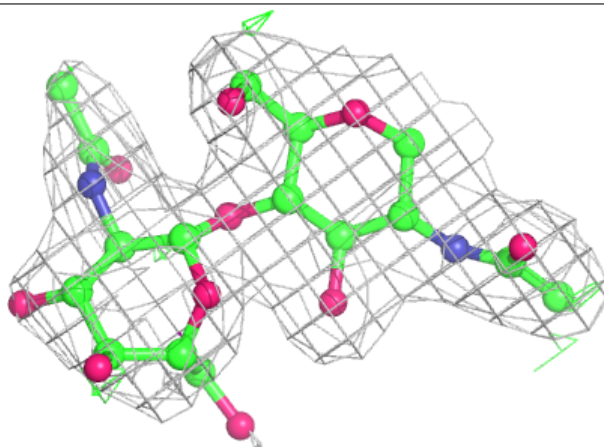


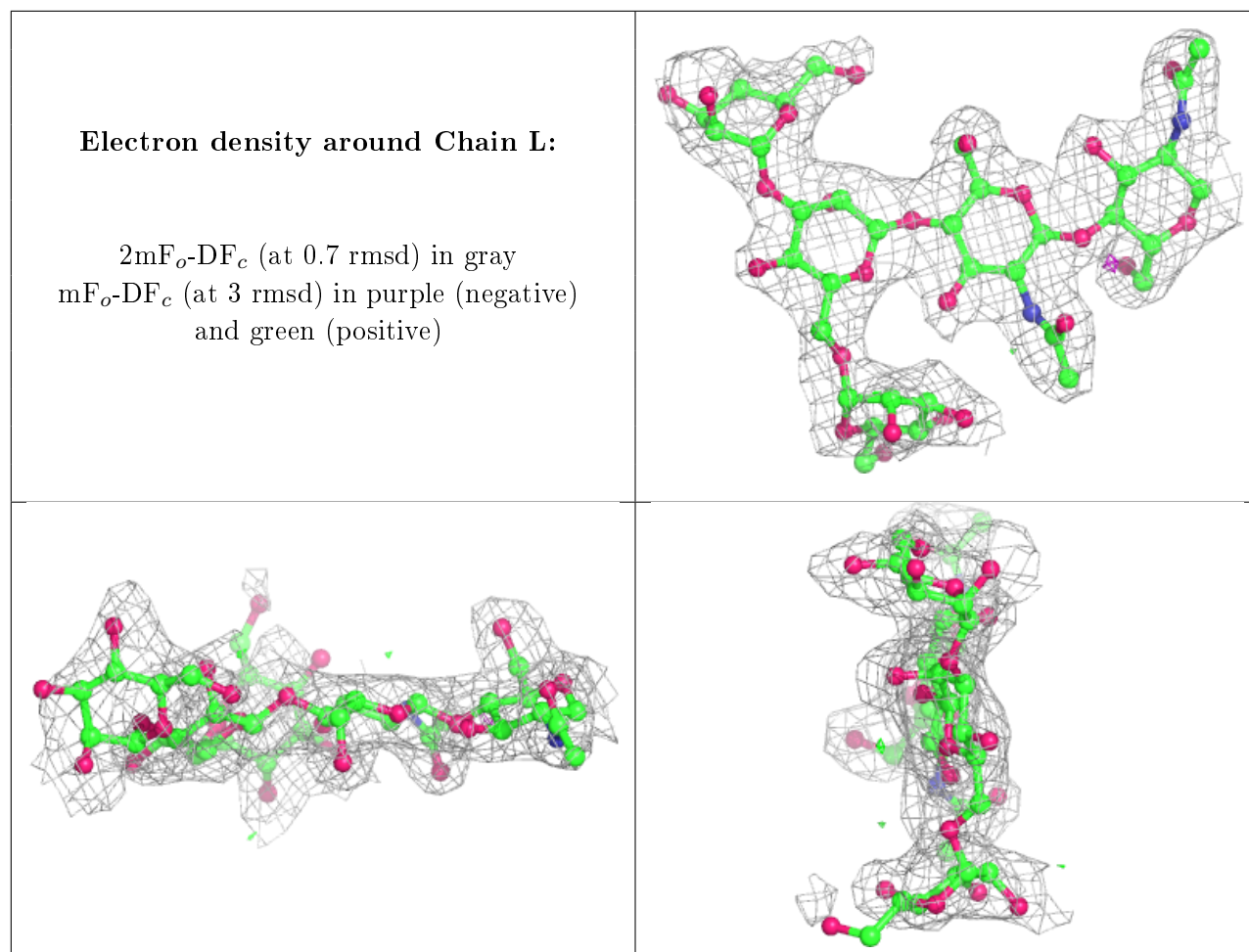
Electron density around Chain K:

$2mF_o-DF_c$ (at 0.7 rmsd) in gray
 mF_o-DF_c (at 3 rmsd) in purple (negative)
and green (positive)

**Electron density around Chain M:**

$2mF_o-DF_c$ (at 0.7 rmsd) in gray
 mF_o-DF_c (at 3 rmsd) in purple (negative)
and green (positive)





6.4 Ligands ⓘ

In the following table, the Atoms column lists the number of modelled atoms in the group and the number defined in the chemical component dictionary. The B-factors column lists the minimum, median, 95th percentile and maximum values of B factors of atoms in the group. The column labelled 'Q<0.9' lists the number of atoms with occupancy less than 0.9.

Mol	Type	Chain	Res	Atoms	RSCC	RSR	B-factors(Å ²)	Q<0.9
6	NAG	C	502	14/15	0.46	0.51	75,83,93,97	0
6	NAG	E	501	14/15	0.73	0.37	60,69,71,73	0
6	NAG	C	501	14/15	0.77	0.28	62,72,79,80	0
6	NAG	A	404	14/15	0.88	0.27	57,68,70,73	0

6.5 Other polymers ⓘ

There are no such residues in this entry.