



# wwPDB X-ray Structure Validation Summary Report ⓘ

Mar 2, 2021 – 06:06 PM EST

PDB ID : 6VT2  
Title : Sialic acid binding region of Streptococcus sanguinis SK1 adhesin bound to sTa  
Authors : Stubbs, H.E.; Iverson, T.M.  
Deposited on : 2020-02-12  
Resolution : 1.52 Å(reported)

This is a wwPDB X-ray Structure Validation Summary Report for a publicly released PDB entry.

We welcome your comments at [validation@mail.wwpdb.org](mailto:validation@mail.wwpdb.org)

A user guide is available at

<https://www.wwpdb.org/validation/2017/XrayValidationReportHelp>

with specific help available everywhere you see the ⓘ symbol.

---

The following versions of software and data (see [references ⓘ](#)) were used in the production of this report:

MolProbity : 4.02b-467  
Mogul : 1.8.5 (274361), CSD as541be (2020)  
Xtriage (Phenix) : 1.13  
EDS : 2.17.1  
Percentile statistics : 20191225.v01 (using entries in the PDB archive December 25th 2019)  
Refmac : 5.8.0158  
CCP4 : 7.0.044 (Gargrove)  
Ideal geometry (proteins) : Engh & Huber (2001)  
Ideal geometry (DNA, RNA) : Parkinson et al. (1996)  
Validation Pipeline (wwPDB-VP) : 2.17.1

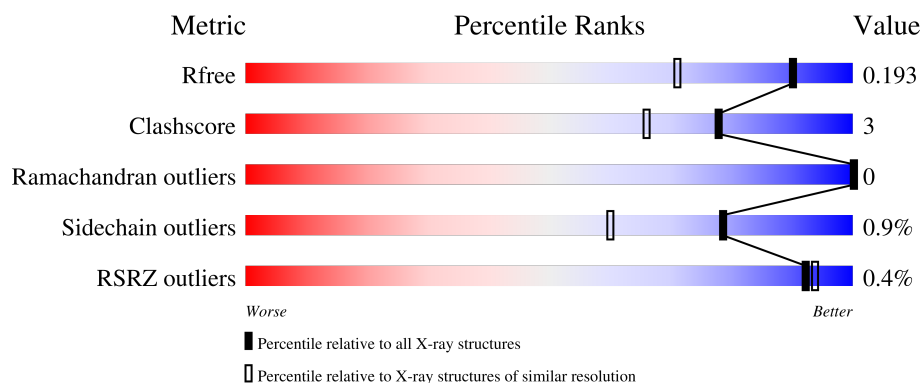
# 1 Overall quality at a glance

The following experimental techniques were used to determine the structure:

## *X-RAY DIFFRACTION*

The reported resolution of this entry is 1.52 Å.

Percentile scores (ranging between 0-100) for global validation metrics of the entry are shown in the following graphic. The table shows the number of entries on which the scores are based.



Metric	Whole archive (#Entries)	Similar resolution (#Entries, resolution range(Å))
$R_{free}$	130704	4009 (1.54-1.50)
Clashscore	141614	4249 (1.54-1.50)
Ramachandran outliers	138981	4148 (1.54-1.50)
Sidechain outliers	138945	4146 (1.54-1.50)
RSRZ outliers	127900	3943 (1.54-1.50)

The table below summarises the geometric issues observed across the polymeric chains and their fit to the electron density. The red, orange, yellow and green segments of the lower bar indicate the fraction of residues that contain outliers for  $\geq 3$ , 2, 1 and 0 types of geometric quality criteria respectively. A grey segment represents the fraction of residues that are not modelled. The numeric value for each fraction is indicated below the corresponding segment, with a dot representing fractions  $\leq 5\%$ . The upper red bar (where present) indicates the fraction of residues that have poor fit to the electron density. The numeric value is given above the bar.

Mol	Chain	Length	Quality of chain
1	A	409	<div><div></div><div>92%</div><div>7%</div></div>
1	E	409	<div><div></div><div>92%</div><div>8%</div></div>
2	C	3	<div><div></div><div>33%</div><div>33%</div><div>33%</div></div>
2	D	3	<div><div></div><div>67%</div><div>33%</div></div>
2	F	3	<div><div></div><div>33%</div><div>67%</div></div>

*Continued on next page...*

*Continued from previous page...*

Mol	Chain	Length	Quality of chain
2	K	3	 <div>33% 67%</div>

The following table lists non-polymeric compounds, carbohydrate monomers and non-standard residues in protein, DNA, RNA chains that are outliers for geometric or electron-density-fit criteria:

Mol	Type	Chain	Res	Chirality	Geometry	Clashes	Electron density
4	SO4	A	706	-	-	X	X

## 2 Entry composition [i](#)

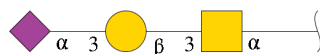
There are 6 unique types of molecules in this entry. The entry contains 14469 atoms, of which 6220 are hydrogens and 0 are deuteriums.

In the tables below, the ZeroOcc column contains the number of atoms modelled with zero occupancy, the AltConf column contains the number of residues with at least one atom in alternate conformation and the Trace column contains the number of residues modelled with at most 2 atoms.

- Molecule 1 is a protein called Adhesin.

Mol	Chain	Residues	Atoms					ZeroOcc	AltConf	Trace
1	A	409	Total	C	H	N	O	0	16	0
			6264	1976	3078	553	657			
1	E	409	Total	C	H	N	O	0	19	0
			6342	1990	3134	564	654			

- Molecule 2 is an oligosaccharide called N-acetyl-alpha-neuraminic acid-(2-3)-beta-D-galactopyranose-(1-3)-2-acetamido-2-deoxy-alpha-D-galactopyranose.



Mol	Chain	Residues	Atoms				ZeroOcc	AltConf	Trace
2	K	3	Total	C	N	O	0	0	0
			46	25	2	19			
2	C	3	Total	C	N	O	0	0	0
			46	25	2	19			
2	D	3	Total	C	N	O	0	0	0
			46	25	2	19			
2	F	3	Total	C	N	O	0	0	0
			46	25	2	19			

- Molecule 3 is CALCIUM ION (three-letter code: CA) (formula: Ca).

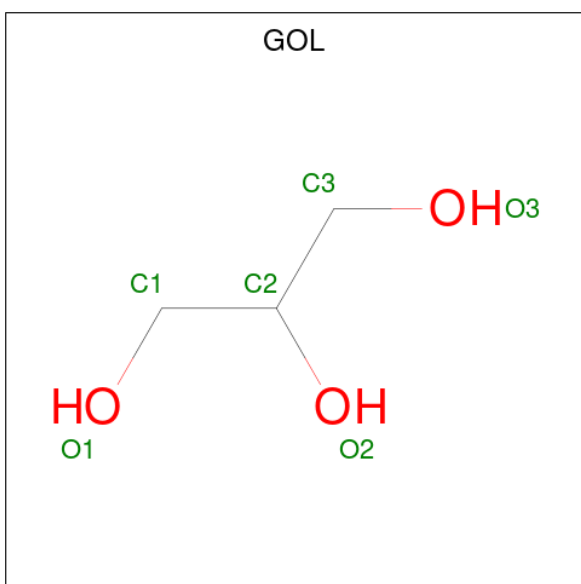
Mol	Chain	Residues	Atoms		ZeroOcc	AltConf
3	A	4	Total	Ca	0	0
			4	4		
3	E	4	Total	Ca	0	0
			4	4		

- Molecule 4 is SULFATE ION (three-letter code: SO4) (formula: O<sub>4</sub>S).



Mol	Chain	Residues	Atoms			ZeroOcc	AltConf
4	A	1	Total	O	S	0	0
			5	4	1		
4	A	1	Total	O	S	0	0
			5	4	1		
4	E	1	Total	O	S	0	0
			5	4	1		
4	E	1	Total	O	S	0	0
			5	4	1		
4	E	1	Total	O	S	0	0
			5	4	1		

- Molecule 5 is GLYCEROL (three-letter code: GOL) (formula: C<sub>3</sub>H<sub>8</sub>O<sub>3</sub>).



Mol	Chain	Residues	Atoms				ZeroOcc	AltConf
5	E	1	Total	C	H	O	0	0
			14	3	8	3		

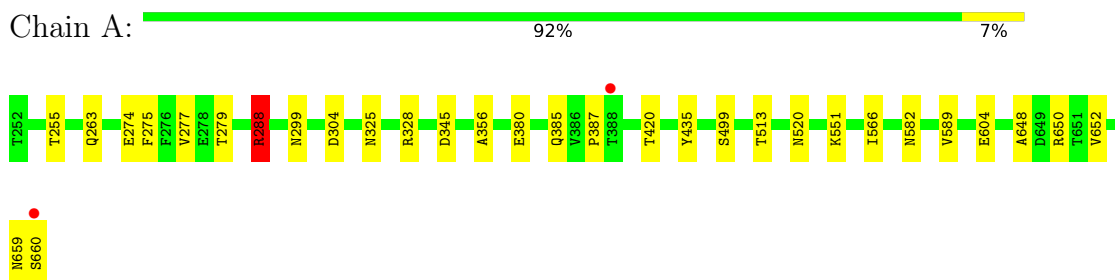
- Molecule 6 is water.

Mol	Chain	Residues	Atoms		ZeroOcc	AltConf
6	A	818	Total	O	0	0
			818	818		
6	E	814	Total	O	0	0
			814	814		

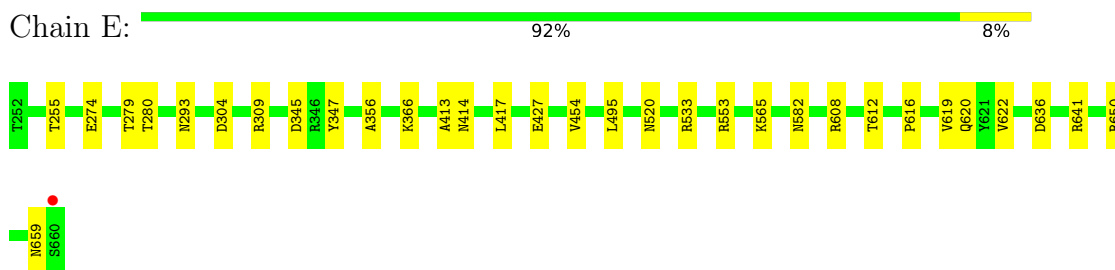
### 3 Residue-property plots

These plots are drawn for all protein, RNA, DNA and oligosaccharide chains in the entry. The first graphic for a chain summarises the proportions of the various outlier classes displayed in the second graphic. The second graphic shows the sequence view annotated by issues in geometry and electron density. Residues are color-coded according to the number of geometric quality criteria for which they contain at least one outlier: green = 0, yellow = 1, orange = 2 and red = 3 or more. A red dot above a residue indicates a poor fit to the electron density ( $RSRZ > 2$ ). Stretches of 2 or more consecutive residues without any outlier are shown as a green connector. Residues present in the sample, but not in the model, are shown in grey.

- Molecule 1: Adhesin



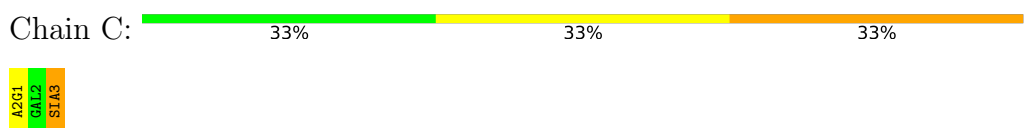
- Molecule 1: Adhesin



- Molecule 2: N-acetyl-alpha-neuraminic acid-(2-3)-beta-D-galactopyranose-(1-3)-2-acetamido-2-deoxy-alpha-D-galactopyranose



- Molecule 2: N-acetyl-alpha-neuraminic acid-(2-3)-beta-D-galactopyranose-(1-3)-2-acetamido-2-deoxy-alpha-D-galactopyranose




- Molecule 2: N-acetyl-alpha-neuraminic acid-(2-3)-beta-D-galactopyranose-(1-3)-2-acetamido-2-deoxy-alpha-D-galactopyranose

Chain D:  67% 33%

A2G1  
GAL2  
SIA3

- Molecule 2: N-acetyl-alpha-neuraminic acid-(2-3)-beta-D-galactopyranose-(1-3)-2-acetamido-2-deoxy-alpha-D-galactopyranose

Chain F:  33% 67%

A2G1  
GAL2  
SIA3



## 4 Data and refinement statistics

Property	Value	Source
Space group	P 21 21 2	Depositor
Cell constants a, b, c, $\alpha$ , $\beta$ , $\gamma$	82.21Å 269.86Å 47.51Å 90.00° 90.00° 90.00°	Depositor
Resolution (Å)	35.66 – 1.52 47.51 – 1.52	Depositor EDS
% Data completeness (in resolution range)	91.2 (35.66-1.52) 91.2 (47.51-1.52)	Depositor EDS
$R_{merge}$	(Not available)	Depositor
$R_{sym}$	0.07	Depositor
$\langle I/\sigma(I) \rangle$ <sup>1</sup>	2.85 (at 1.52Å)	Xtriage
Refinement program	PHENIX 1.18.2_3874+SVN	Depositor
R, $R_{free}$	0.177 , 0.193 0.177 , 0.193	Depositor DCC
$R_{free}$ test set	7370 reflections (4.96%)	wwPDB-VP
Wilson B-factor (Å <sup>2</sup> )	14.4	Xtriage
Anisotropy	0.323	Xtriage
Bulk solvent $k_{sol}$ (e/Å <sup>3</sup> ), $B_{sol}$ (Å <sup>2</sup> )	0.39 , 38.5	EDS
L-test for twinning <sup>2</sup>	$\langle  L  \rangle = 0.49$ , $\langle L^2 \rangle = 0.33$	Xtriage
Estimated twinning fraction	No twinning to report.	Xtriage
$F_o, F_c$ correlation	0.96	EDS
Total number of atoms	14469	wwPDB-VP
Average B, all atoms (Å <sup>2</sup> )	18.0	wwPDB-VP

Xtriage's analysis on translational NCS is as follows: *The largest off-origin peak in the Patterson function is 14.61% of the height of the origin peak. No significant pseudotranslation is detected.*

<sup>1</sup>Intensities estimated from amplitudes.

<sup>2</sup>Theoretical values of  $\langle |L| \rangle$ ,  $\langle L^2 \rangle$  for acentric reflections are 0.5, 0.333 respectively for untwinned datasets, and 0.375, 0.2 for perfectly twinned datasets.

## 5 Model quality [i](#)

### 5.1 Standard geometry [i](#)

Bond lengths and bond angles in the following residue types are not validated in this section: SO4, SIA, CA, GOL, A2G, GAL

The Z score for a bond length (or angle) is the number of standard deviations the observed value is removed from the expected value. A bond length (or angle) with  $|Z| > 5$  is considered an outlier worth inspection. RMSZ is the root-mean-square of all Z scores of the bond lengths (or angles).

Mol	Chain	Bond lengths		Bond angles	
		RMSZ	# $ Z  > 5$	RMSZ	# $ Z  > 5$
1	A	1.11	7/3324 (0.2%)	0.95	5/4558 (0.1%)
1	E	1.09	12/3356 (0.4%)	0.96	4/4599 (0.1%)
All	All	1.10	19/6680 (0.3%)	0.95	9/9157 (0.1%)

The worst 5 of 19 bond length outliers are listed below:

Mol	Chain	Res	Type	Atoms	Z	Observed(Å)	Ideal(Å)
1	A	255	THR	C-O	-10.89	1.02	1.23
1	E	454	VAL	C-O	-9.33	1.05	1.23
1	E	255[A]	THR	C-O	-9.24	1.05	1.23
1	E	255[B]	THR	C-O	-9.24	1.05	1.23
1	A	435	TYR	C-N	7.46	1.48	1.34

The worst 5 of 9 bond angle outliers are listed below:

Mol	Chain	Res	Type	Atoms	Z	Observed(°)	Ideal(°)
1	E	309	ARG	NE-CZ-NH2	-10.12	115.24	120.30
1	A	288	ARG	NE-CZ-NH2	8.32	124.46	120.30
1	E	553	ARG	NE-CZ-NH1	7.29	123.94	120.30
1	E	309	ARG	NE-CZ-NH1	7.21	123.90	120.30
1	A	328	ARG	NE-CZ-NH2	-6.82	116.89	120.30

There are no chirality outliers.

There are no planarity outliers.

### 5.2 Too-close contacts [i](#)

In the following table, the Non-H and H(model) columns list the number of non-hydrogen atoms and hydrogen atoms in the chain respectively. The H(added) column lists the number of hydrogen

atoms added and optimized by MolProbity. The Clashes column lists the number of clashes within the asymmetric unit, whereas Symm-Clashes lists symmetry-related clashes.

Mol	Chain	Non-H	H(model)	H(added)	Clashes	Symm-Clashes
1	A	3186	3078	3018	19	4
1	E	3208	3134	3043	15	4
2	C	46	0	37	1	0
2	D	46	0	37	2	0
2	F	46	0	37	0	0
2	K	46	0	37	0	0
3	A	4	0	0	0	0
3	E	4	0	0	0	0
4	A	10	0	0	6	1
4	E	15	0	0	0	0
5	E	6	8	8	0	0
6	A	818	0	0	14	6
6	E	814	0	0	8	6
All	All	8249	6220	6217	38	13

The all-atom clashscore is defined as the number of clashes found per 1000 atoms (including hydrogen atoms). The all-atom clashscore for this structure is 3.

The worst 5 of 38 close contacts within the same asymmetric unit are listed below, sorted by their clash magnitude.

Atom-1	Atom-2	Interatomic distance (Å)	Clash overlap (Å)
1:A:604:GLU:HG2	6:A:845:HOH:O	1.53	1.07
1:E:650[A]:ARG:NH1	6:E:1501:HOH:O	1.93	1.00
4:A:706:SO4:S	6:A:801:HOH:O	2.21	0.98
4:A:706:SO4:O3	6:A:801:HOH:O	1.86	0.93
1:A:604:GLU:CG	6:A:845:HOH:O	2.12	0.89

The worst 5 of 13 symmetry-related close contacts are listed below. The label for Atom-2 includes the symmetry operator and encoded unit-cell translations to be applied.

Atom-1	Atom-2	Interatomic distance (Å)	Clash overlap (Å)
6:A:1434:HOH:O	6:A:1581:HOH:O[1_554]	1.52	0.68
1:A:660:SER:CA	6:E:2081:HOH:O[1_556]	1.84	0.36
1:A:659:ASN:OD1	1:E:659:ASN:OD1[1_556]	1.93	0.27
6:A:1357:HOH:O	6:A:1579:HOH:O[2_765]	1.97	0.23
6:A:1491:HOH:O	6:E:2296:HOH:O[4_556]	1.98	0.22

## 5.3 Torsion angles

### 5.3.1 Protein backbone

In the following table, the Percentiles column shows the percent Ramachandran outliers of the chain as a percentile score with respect to all X-ray entries followed by that with respect to entries of similar resolution.

The Analysed column shows the number of residues for which the backbone conformation was analysed, and the total number of residues.

Mol	Chain	Analysed	Favoured	Allowed	Outliers	Percentiles	
1	A	423/409 (103%)	416 (98%)	7 (2%)	0	100	100
1	E	426/409 (104%)	420 (99%)	6 (1%)	0	100	100
All	All	849/818 (104%)	836 (98%)	13 (2%)	0	100	100

There are no Ramachandran outliers to report.

### 5.3.2 Protein sidechains

In the following table, the Percentiles column shows the percent sidechain outliers of the chain as a percentile score with respect to all X-ray entries followed by that with respect to entries of similar resolution.

The Analysed column shows the number of residues for which the sidechain conformation was analysed, and the total number of residues.

Mol	Chain	Analysed	Rotameric	Outliers	Percentiles	
1	A	362/349 (104%)	358 (99%)	4 (1%)	73	52
1	E	368/349 (105%)	366 (100%)	2 (0%)	88	78
All	All	730/698 (105%)	724 (99%)	6 (1%)	78	65

5 of 6 residues with a non-rotameric sidechain are listed below:

Mol	Chain	Res	Type
1	A	420	THR
1	E	304	ASP
1	E	495	LEU
1	A	288	ARG
1	A	263	GLN

Sometimes sidechains can be flipped to improve hydrogen bonding and reduce clashes. All (3) such sidechains are listed below:

Mol	Chain	Res	Type
1	A	263	GLN
1	A	325	ASN
1	A	520	ASN

### 5.3.3 RNA ⓘ

There are no RNA molecules in this entry.

## 5.4 Non-standard residues in protein, DNA, RNA chains ⓘ

There are no non-standard protein/DNA/RNA residues in this entry.

## 5.5 Carbohydrates ⓘ

12 monosaccharides are modelled in this entry.

In the following table, the Counts columns list the number of bonds (or angles) for which Mogul statistics could be retrieved, the number of bonds (or angles) that are observed in the model and the number of bonds (or angles) that are defined in the Chemical Component Dictionary. The Link column lists molecule types, if any, to which the group is linked. The Z score for a bond length (or angle) is the number of standard deviations the observed value is removed from the expected value. A bond length (or angle) with  $|Z| > 2$  is considered an outlier worth inspection. RMSZ is the root-mean-square of all Z scores of the bond lengths (or angles).

Mol	Type	Chain	Res	Link	Bond lengths			Bond angles		
					Counts	RMSZ	$\# Z  > 2$	Counts	RMSZ	$\# Z  > 2$
2	A2G	C	1	2	15,15,15	0.42	0	21,21,21	1.13	2 (9%)
2	GAL	C	2	2	11,11,12	0.60	0	15,15,17	0.88	0
2	SIA	C	3	2	17,20,21	0.90	1 (5%)	21,28,31	1.12	1 (4%)
2	A2G	D	1	2	15,15,15	0.37	0	21,21,21	1.23	2 (9%)
2	GAL	D	2	2	11,11,12	0.69	0	15,15,17	0.87	0
2	SIA	D	3	2	17,20,21	0.90	1 (5%)	21,28,31	1.07	0
2	A2G	F	1	2	15,15,15	0.45	0	21,21,21	1.24	3 (14%)
2	GAL	F	2	2	11,11,12	0.59	0	15,15,17	0.88	0
2	SIA	F	3	2	17,20,21	0.80	0	21,28,31	1.12	2 (9%)
2	A2G	K	1	2	15,15,15	0.42	0	21,21,21	1.34	2 (9%)
2	GAL	K	2	2	11,11,12	0.60	0	15,15,17	0.93	0
2	SIA	K	3	2	17,20,21	0.82	0	21,28,31	1.06	1 (4%)

In the following table, the Chirals column lists the number of chiral outliers, the number of chiral centers analysed, the number of these observed in the model and the number defined in the

Chemical Component Dictionary. Similar counts are reported in the Torsion and Rings columns.  
'-' means no outliers of that kind were identified.

Mol	Type	Chain	Res	Link	Chirals	Torsions	Rings
2	A2G	C	1	2	-	0/6/26/26	0/1/1/1
2	GAL	C	2	2	-	0/2/19/22	0/1/1/1
2	SIA	C	3	2	-	0/14/34/38	0/1/1/1
2	A2G	D	1	2	-	0/6/26/26	0/1/1/1
2	GAL	D	2	2	-	0/2/19/22	0/1/1/1
2	SIA	D	3	2	-	0/14/34/38	0/1/1/1
2	A2G	F	1	2	-	0/6/26/26	0/1/1/1
2	GAL	F	2	2	-	0/2/19/22	0/1/1/1
2	SIA	F	3	2	-	0/14/34/38	0/1/1/1
2	A2G	K	1	2	-	0/6/26/26	0/1/1/1
2	GAL	K	2	2	-	0/2/19/22	0/1/1/1
2	SIA	K	3	2	-	0/14/34/38	0/1/1/1

All (2) bond length outliers are listed below:

Mol	Chain	Res	Type	Atoms	Z	Observed(Å)	Ideal(Å)
2	D	3	SIA	C7-C6	2.28	1.55	1.53
2	C	3	SIA	C7-C6	2.05	1.55	1.53

The worst 5 of 13 bond angle outliers are listed below:

Mol	Chain	Res	Type	Atoms	Z	Observed(°)	Ideal(°)
2	K	1	A2G	C1-C2-N2	-4.85	105.11	110.73
2	D	1	A2G	C1-C2-N2	-3.94	106.17	110.73
2	F	1	A2G	C1-C2-N2	-3.53	106.64	110.73
2	C	1	A2G	C1-C2-N2	-3.41	106.78	110.73
2	D	1	A2G	C3-C2-N2	-3.10	104.76	110.62

There are no chirality outliers.

There are no torsion outliers.

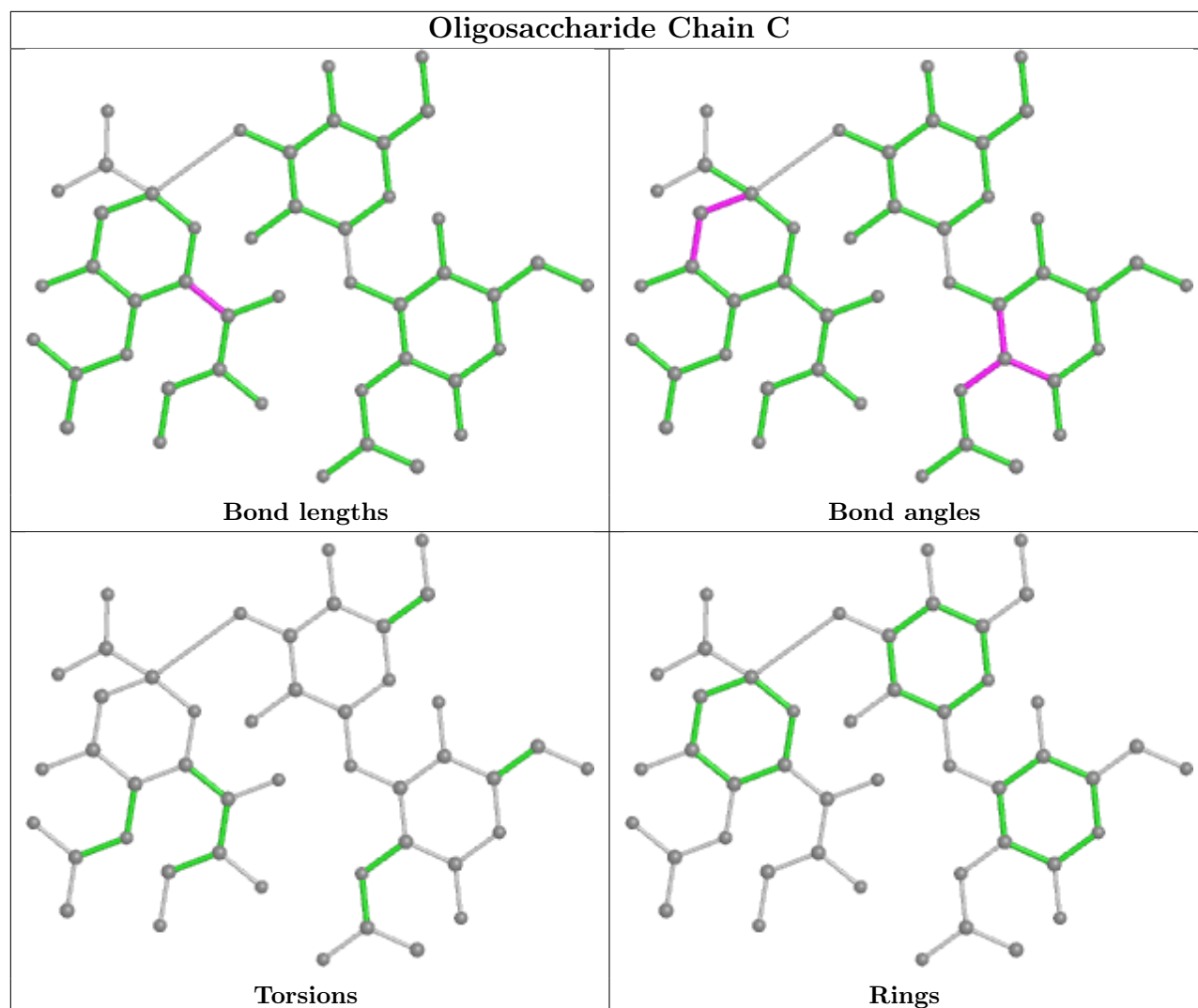
There are no ring outliers.

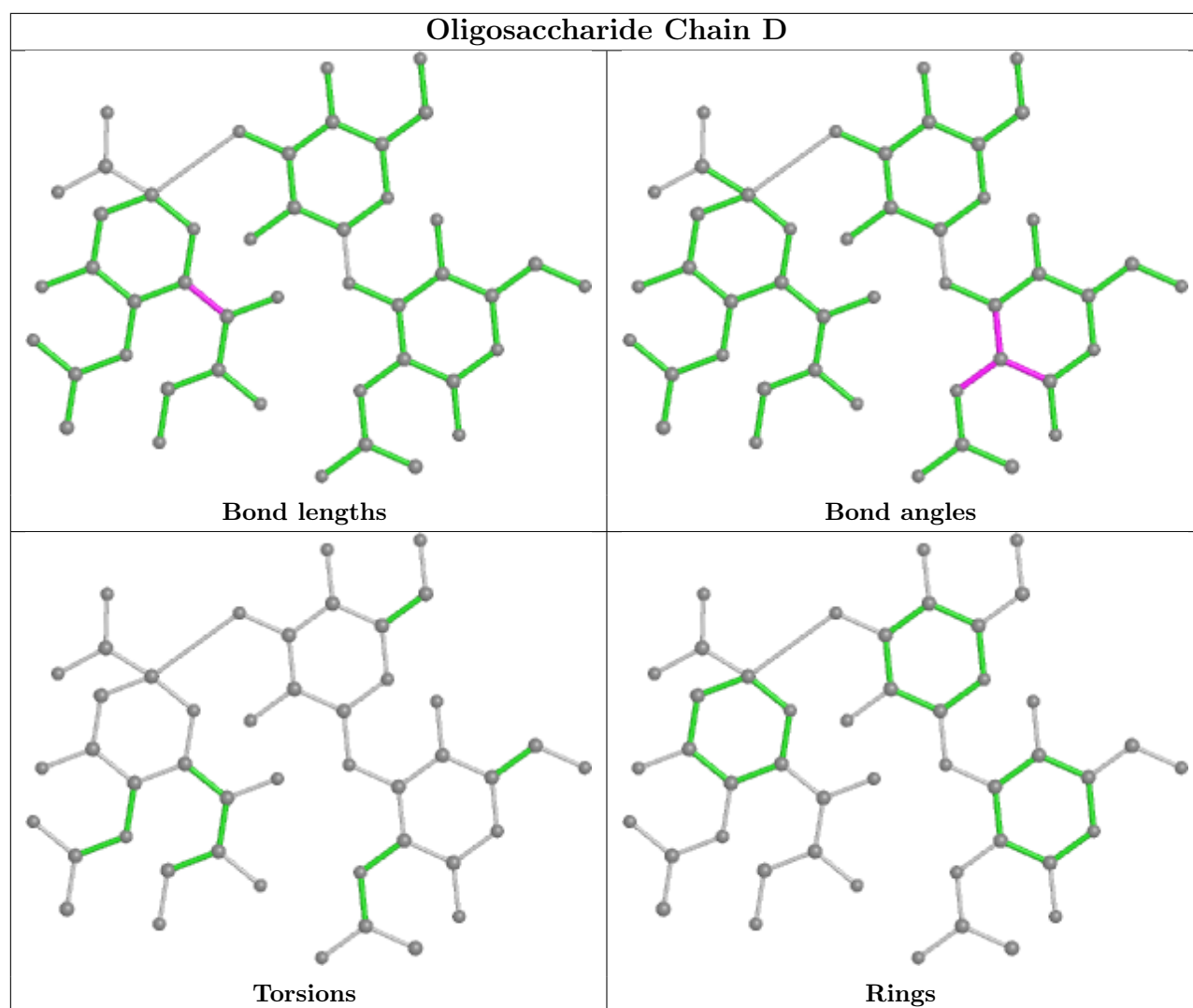
3 monomers are involved in 3 short contacts:

Mol	Chain	Res	Type	Clashes	Symm-Clashes
2	D	3	SIA	1	0
2	D	2	GAL	1	0
2	C	3	SIA	1	0

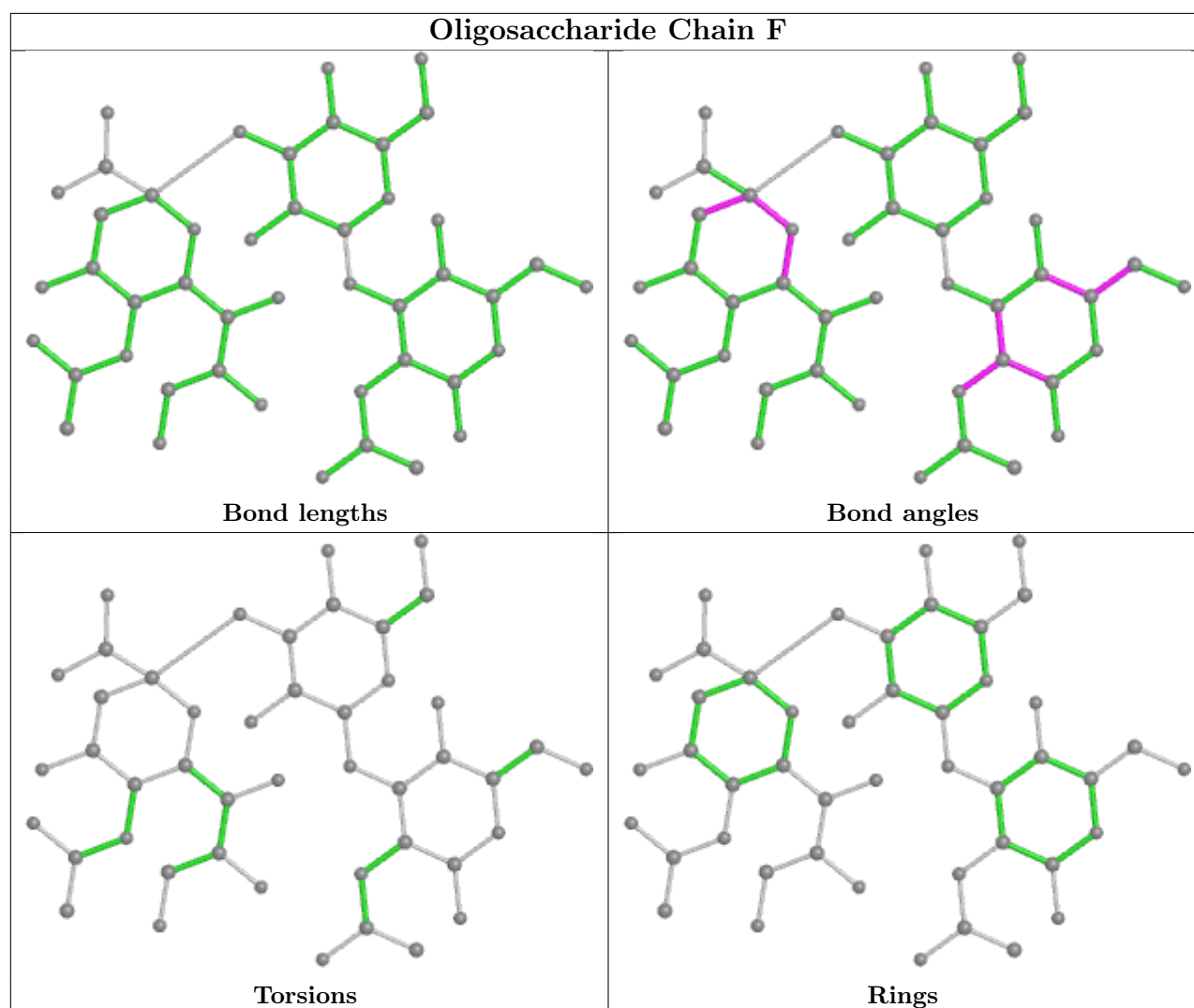
The following is a two-dimensional graphical depiction of Mogul quality analysis of bond lengths,

bond angles, torsion angles, and ring geometry for oligosaccharide.









## 5.6 Ligand geometry [i](#)

Of 14 ligands modelled in this entry, 8 are monoatomic - leaving 6 for Mogul analysis.

In the following table, the Counts columns list the number of bonds (or angles) for which Mogul statistics could be retrieved, the number of bonds (or angles) that are observed in the model and the number of bonds (or angles) that are defined in the Chemical Component Dictionary. The Link column lists molecule types, if any, to which the group is linked. The Z score for a bond length (or angle) is the number of standard deviations the observed value is removed from the expected value. A bond length (or angle) with  $|Z| > 2$  is considered an outlier worth inspection. RMSZ is the root-mean-square of all Z scores of the bond lengths (or angles).

Mol	Type	Chain	Res	Link	Bond lengths			Bond angles		
					Counts	RMSZ	$\# Z  > 2$	Counts	RMSZ	$\# Z  > 2$
4	SO4	A	706	-	4,4,4	0.95	0	6,6,6	0.47	0
5	GOL	E	1401	-	5,5,5	1.44	0	5,5,5	0.75	0
4	SO4	E	1408	-	4,4,4	0.56	0	6,6,6	0.59	0

Mol	Type	Chain	Res	Link	Bond lengths			Bond angles		
					Counts	RMSZ	# Z  > 2	Counts	RMSZ	# Z  > 2
4	SO4	A	705	-	4,4,4	0.31	0	6,6,6	0.74	0
4	SO4	E	1407	-	4,4,4	0.15	0	6,6,6	0.21	0
4	SO4	E	1406	-	4,4,4	0.46	0	6,6,6	0.48	0

In the following table, the Chirals column lists the number of chiral outliers, the number of chiral centers analysed, the number of these observed in the model and the number defined in the Chemical Component Dictionary. Similar counts are reported in the Torsion and Rings columns. '-' means no outliers of that kind were identified.

Mol	Type	Chain	Res	Link	Chirals	Torsions	Rings
5	GOL	E	1401	-	-	2/4/4/4	-

There are no bond length outliers.

There are no bond angle outliers.

There are no chirality outliers.

All (2) torsion outliers are listed below:

Mol	Chain	Res	Type	Atoms
5	E	1401	GOL	C1-C2-C3-O3
5	E	1401	GOL	O2-C2-C3-O3

There are no ring outliers.

1 monomer is involved in 7 short contacts:

Mol	Chain	Res	Type	Clashes	Symm-Clashes
4	A	706	SO4	6	1

## 5.7 Other polymers [i](#)

There are no such residues in this entry.

## 5.8 Polymer linkage issues [i](#)

There are no chain breaks in this entry.

## 6 Fit of model and data [i](#)

### 6.1 Protein, DNA and RNA chains [i](#)

In the following table, the column labelled ‘#RSRZ> 2’ contains the number (and percentage) of RSRZ outliers, followed by percent RSRZ outliers for the chain as percentile scores relative to all X-ray entries and entries of similar resolution. The OWAB column contains the minimum, median, 95<sup>th</sup> percentile and maximum values of the occupancy-weighted average B-factor per residue. The column labelled ‘Q< 0.9’ lists the number of (and percentage) of residues with an average occupancy less than 0.9.

Mol	Chain	Analysed	<RSRZ>	#RSRZ>2	OWAB(Å <sup>2</sup> )	Q<0.9
1	A	409/409 (100%)	-0.29	2 (0%) 91 93	9, 14, 28, 54	0
1	E	409/409 (100%)	-0.33	1 (0%) 95 95	9, 14, 25, 52	0
All	All	818/818 (100%)	-0.31	3 (0%) 92 94	9, 14, 27, 54	0

All (3) RSRZ outliers are listed below:

Mol	Chain	Res	Type	RSRZ
1	E	660	SER	4.0
1	A	660	SER	3.2
1	A	388	THR	2.3

### 6.2 Non-standard residues in protein, DNA, RNA chains [i](#)

There are no non-standard protein/DNA/RNA residues in this entry.

### 6.3 Carbohydrates [i](#)

In the following table, the Atoms column lists the number of modelled atoms in the group and the number defined in the chemical component dictionary. The B-factors column lists the minimum, median, 95<sup>th</sup> percentile and maximum values of B factors of atoms in the group. The column labelled ‘Q< 0.9’ lists the number of atoms with occupancy less than 0.9.

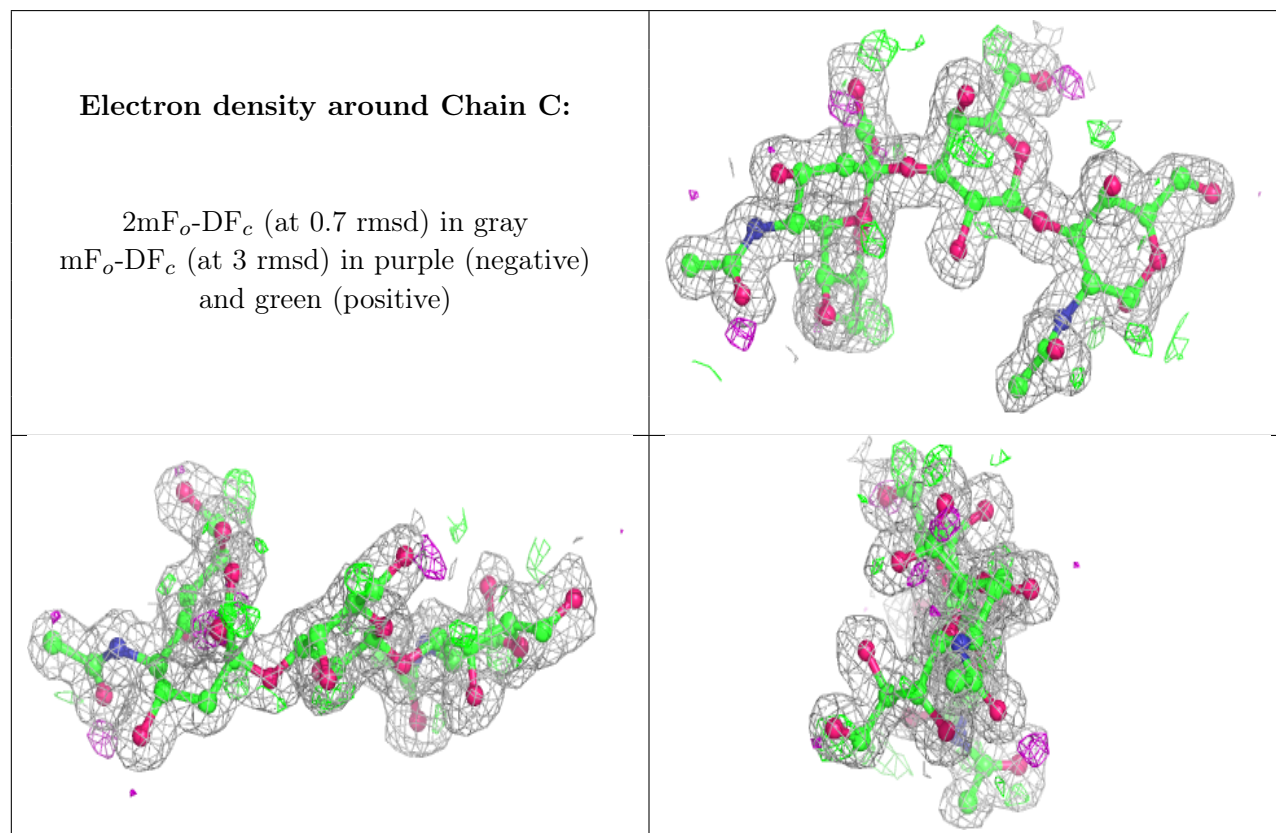
Mol	Type	Chain	Res	Atoms	RSCC	RSR	B-factors(Å <sup>2</sup> )	Q<0.9
2	A2G	F	1	15/15	0.77	0.15	33,42,51,55	0
2	A2G	K	1	15/15	0.82	0.13	29,38,44,52	0
2	GAL	F	2	11/12	0.91	0.09	17,21,25,27	0
2	SIA	D	3	20/21	0.92	0.09	8,11,14,14	0
2	GAL	K	2	11/12	0.93	0.08	18,22,25,26	0
2	SIA	K	3	20/21	0.93	0.10	11,15,19,20	0

*Continued on next page...*

*Continued from previous page...*

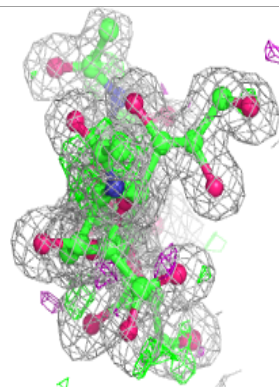
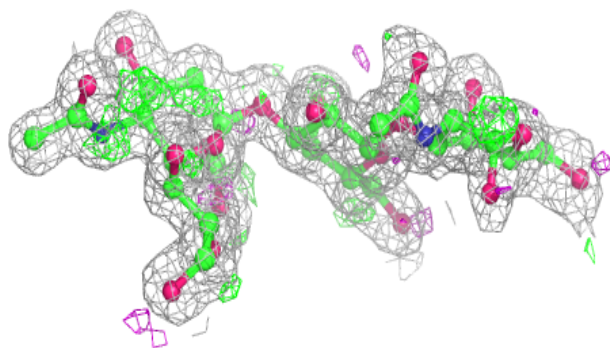
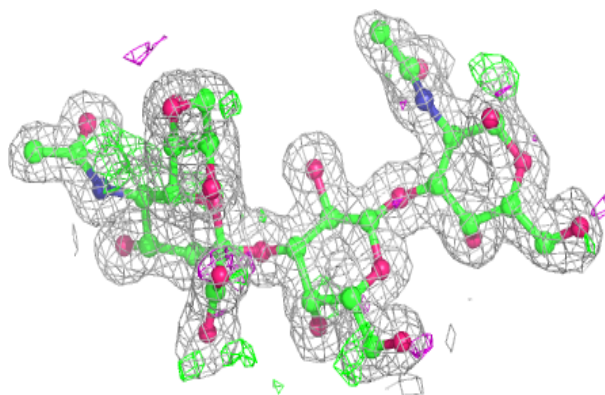
Mol	Type	Chain	Res	Atoms	RSCC	RSR	B-factors( $\text{\AA}^2$ )	Q<0.9
2	A2G	D	1	15/15	0.93	0.10	13,20,32,35	0
2	A2G	C	1	15/15	0.94	0.08	15,19,32,33	0
2	GAL	C	2	11/12	0.94	0.07	11,13,16,16	0
2	SIA	F	3	20/21	0.94	0.09	11,15,19,21	0
2	SIA	C	3	20/21	0.95	0.09	8,11,13,14	0
2	GAL	D	2	11/12	0.95	0.08	10,12,13,16	0

The following is a graphical depiction of the model fit to experimental electron density for oligosaccharide. Each fit is shown from different orientation to approximate a three-dimensional view.

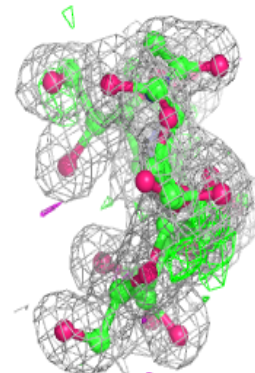
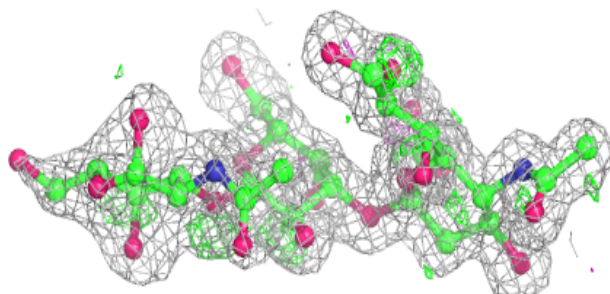
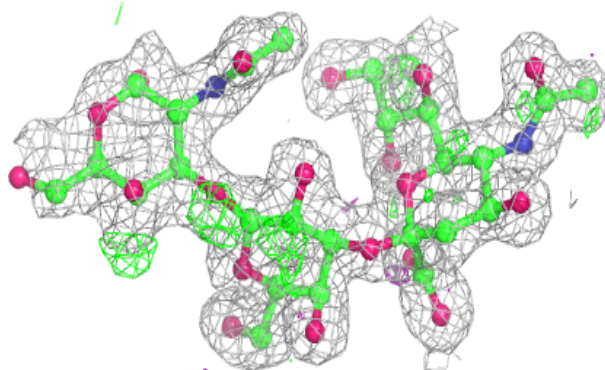


**Electron density around Chain D:**

$2mF_o-DF_c$  (at 0.7 rmsd) in gray  
 $mF_o-DF_c$  (at 3 rmsd) in purple (negative)  
and green (positive)

**Electron density around Chain F:**

$2mF_o-DF_c$  (at 0.7 rmsd) in gray  
 $mF_o-DF_c$  (at 3 rmsd) in purple (negative)  
and green (positive)



## 6.4 Ligands [i](#)

In the following table, the Atoms column lists the number of modelled atoms in the group and the number defined in the chemical component dictionary. The B-factors column lists the minimum, median, 95<sup>th</sup> percentile and maximum values of B factors of atoms in the group. The column labelled 'Q< 0.9' lists the number of atoms with occupancy less than 0.9.

Mol	Type	Chain	Res	Atoms	RSCC	RSR	B-factors( $\text{\AA}^2$ )	Q<0.9
4	SO4	E	1408	5/5	0.51	0.35	72,75,104,105	0
5	GOL	E	1401	6/6	0.63	0.22	24,38,53,57	0
4	SO4	A	706	5/5	0.71	0.41	149,149,160,162	0
4	SO4	E	1407	5/5	0.91	0.11	46,48,62,77	0
4	SO4	E	1406	5/5	0.96	0.17	10,12,17,17	5
3	CA	E	1405	1/1	0.97	0.06	16,16,16,16	0
3	CA	E	1404	1/1	0.98	0.07	13,13,13,13	0
3	CA	A	703	1/1	0.98	0.04	17,17,17,17	0
4	SO4	A	705	5/5	0.98	0.10	16,21,26,26	5
3	CA	A	704	1/1	0.98	0.09	12,12,12,12	0
3	CA	E	1403	1/1	0.99	0.05	13,13,13,13	0
3	CA	A	701	1/1	0.99	0.07	11,11,11,11	0
3	CA	E	1402	1/1	0.99	0.07	10,10,10,10	0
3	CA	A	702	1/1	1.00	0.05	13,13,13,13	0

## 6.5 Other polymers [i](#)

There are no such residues in this entry.