



Full wwPDB X-ray Structure Validation Report ⓘ

May 26, 2020 – 01:28 pm BST

PDB ID : 5VUW
Title : Structure of human neuronal nitric oxide synthase heme domain in complex with 7-(((3-(Dimethylamino)benzyl)amino)methyl)quinolin-2-amine
Authors : Huiying, L.; Thomas, L.P.
Deposited on : 2017-05-19
Resolution : 2.03 Å(reported)

This is a Full wwPDB X-ray Structure Validation Report for a publicly released PDB entry.

We welcome your comments at validation@mail.wwpdb.org

A user guide is available at

<https://www.wwpdb.org/validation/2017/XrayValidationReportHelp>

with specific help available everywhere you see the ⓘ symbol.

The following versions of software and data (see [references ⓘ](#)) were used in the production of this report:

MolProbity : 4.02b-467
Mogul : 1.8.5 (274361), CSD as541be (2020)
Xtriage (Phenix) : 1.13
EDS : 2.11
buster-report : 1.1.7 (2018)
Percentile statistics : 20191225.v01 (using entries in the PDB archive December 25th 2019)
Refmac : 5.8.0158
CCP4 : 7.0.044 (Gargrove)
Ideal geometry (proteins) : Engh & Huber (2001)
Ideal geometry (DNA, RNA) : Parkinson et al. (1996)
Validation Pipeline (wwPDB-VP) : 2.11

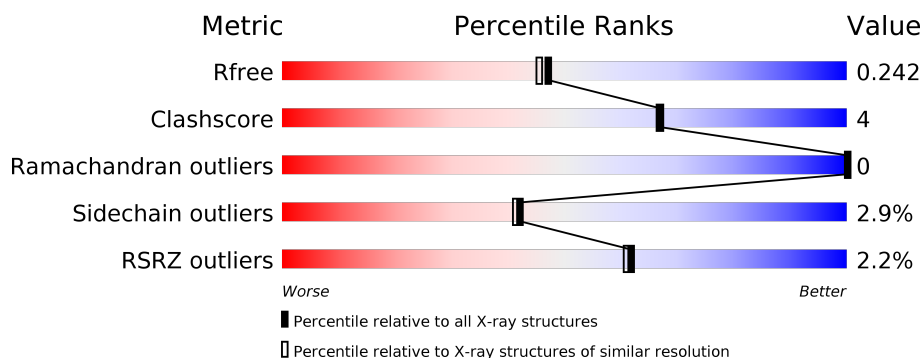
1 Overall quality at a glance

The following experimental techniques were used to determine the structure:

X-RAY DIFFRACTION

The reported resolution of this entry is 2.03 Å.

Percentile scores (ranging between 0-100) for global validation metrics of the entry are shown in the following graphic. The table shows the number of entries on which the scores are based.



Metric	Whole archive (#Entries)	Similar resolution (#Entries, resolution range(Å))
R_{free}	130704	10434 (2.04-2.00)
Clashscore	141614	11643 (2.04-2.00)
Ramachandran outliers	138981	11493 (2.04-2.00)
Sidechain outliers	138945	11492 (2.04-2.00)
RSRZ outliers	127900	10220 (2.04-2.00)

The table below summarises the geometric issues observed across the polymeric chains and their fit to the electron density. The red, orange, yellow and green segments on the lower bar indicate the fraction of residues that contain outliers for ≥ 3 , 2, 1 and 0 types of geometric quality criteria respectively. A grey segment represents the fraction of residues that are not modelled. The numeric value for each fraction is indicated below the corresponding segment, with a dot representing fractions $\leq 5\%$. The upper red bar (where present) indicates the fraction of residues that have poor fit to the electron density. The numeric value is given above the bar.

Mol	Chain	Length	Quality of chain
1	A	421	<div> <div style="width: 100%; height: 10px; background: linear-gradient(to right, red 1%, orange 1%, yellow 1%, green 87%, grey 10%);"></div> <div style="display: flex; justify-content: space-between; width: 100%;"> % 87% 10% .. </div> </div>
1	B	421	<div> <div style="width: 100%; height: 10px; background: linear-gradient(to right, red 3%, orange 1%, yellow 1%, green 86%, grey 10%);"></div> <div style="display: flex; justify-content: space-between; width: 100%;"> 3% 86% 10% .. </div> </div>

2 Entry composition [i](#)

There are 6 unique types of molecules in this entry. The entry contains 7306 atoms, of which 0 are hydrogens and 0 are deuteriums.

In the tables below, the ZeroOcc column contains the number of atoms modelled with zero occupancy, the AltConf column contains the number of residues with at least one atom in alternate conformation and the Trace column contains the number of residues modelled with at most 2 atoms.

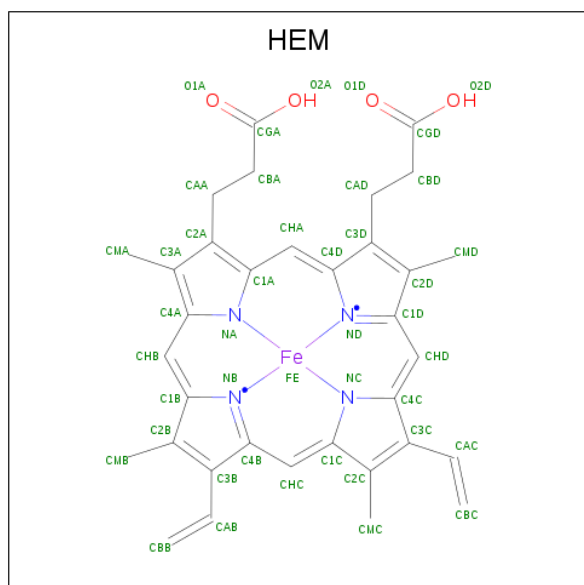
- Molecule 1 is a protein called Nitric oxide synthase, brain.

Mol	Chain	Residues	Atoms					ZeroOcc	AltConf	Trace
1	A	413	Total	C	N	O	S	0	2	0
			3371	2159	574	616	22			
1	B	409	Total	C	N	O	S	0	3	0
			3345	2143	569	612	21			

There are 4 discrepancies between the modelled and reference sequences:

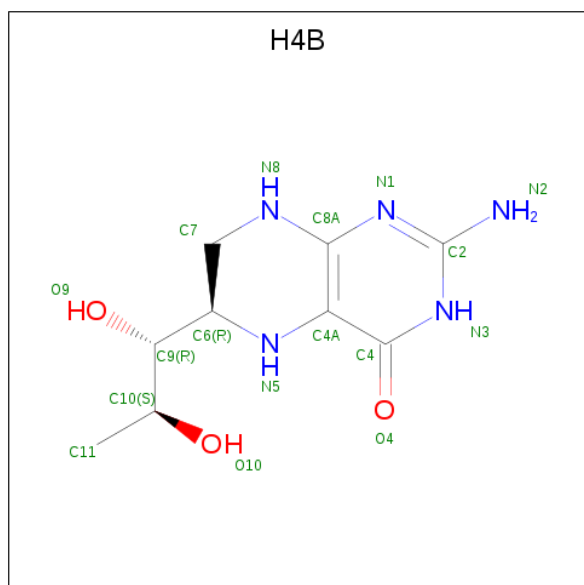
Chain	Residue	Modelled	Actual	Comment	Reference
A	354	ALA	ARG	engineered mutation	UNP P29475
A	357	ASP	GLY	engineered mutation	UNP P29475
B	354	ALA	ARG	engineered mutation	UNP P29475
B	357	ASP	GLY	engineered mutation	UNP P29475

- Molecule 2 is PROTOPORPHYRIN IX CONTAINING FE (three-letter code: HEM) (formula: $C_{34}H_{32}FeN_4O_4$).



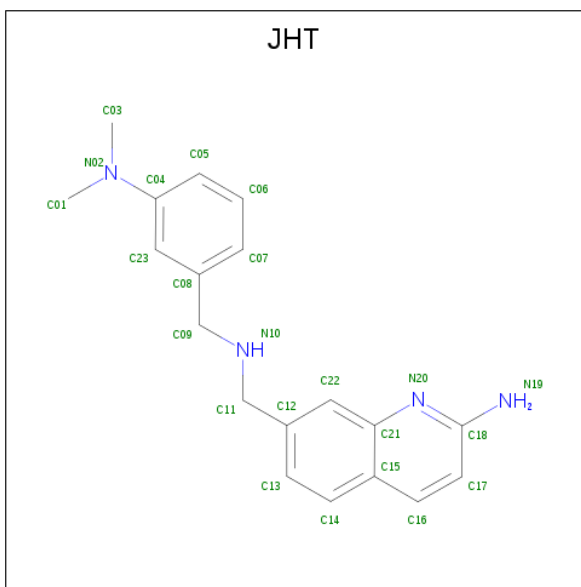
Mol	Chain	Residues	Atoms				ZeroOcc	AltConf
2	A	1	Total	C	Fe	N	O	
			43	34	1	4	4	
2	B	1	Total	C	Fe	N	O	
			43	34	1	4	4	

- Molecule 3 is 5,6,7,8-TETRAHYDROBIOPTERIN (three-letter code: H4B) (formula: $C_9H_{15}N_5O_3$).



Mol	Chain	Residues	Atoms				ZeroOcc	AltConf
3	A	1	Total	C	N	O		
			17	9	5	3		
3	B	1	Total	C	N	O		
			17	9	5	3		

- Molecule 4 is 7-[[[3-(dimethylamino)phenyl]methylamino]methyl]quinolin-2-amine (three-letter code: JHT) (formula: $C_{19}H_{22}N_4$).



Mol	Chain	Residues	Atoms			ZeroOcc	AltConf
4	A	1	Total	C	N	0	0
			23	19	4		
4	B	1	Total	C	N	0	0
			23	19	4		

- Molecule 5 is ZINC ION (three-letter code: ZN) (formula: Zn).

Mol	Chain	Residues	Atoms		ZeroOcc	AltConf
5	A	1	Total	Zn	0	0
			1	1		

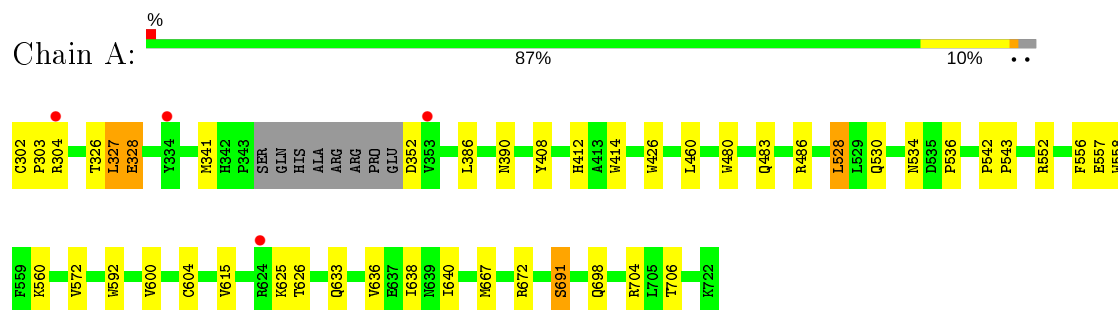
- Molecule 6 is water.

Mol	Chain	Residues	Atoms		ZeroOcc	AltConf
6	A	237	Total	O	0	0
			237	237		
6	B	186	Total	O	0	0
			186	186		

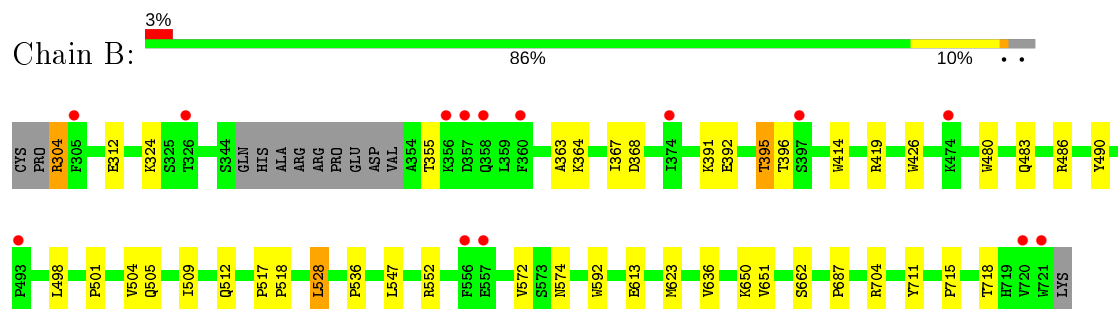
3 Residue-property plots [i](#)

These plots are drawn for all protein, RNA and DNA chains in the entry. The first graphic for a chain summarises the proportions of the various outlier classes displayed in the second graphic. The second graphic shows the sequence view annotated by issues in geometry and electron density. Residues are color-coded according to the number of geometric quality criteria for which they contain at least one outlier: green = 0, yellow = 1, orange = 2 and red = 3 or more. A red dot above a residue indicates a poor fit to the electron density ($RSRZ > 2$). Stretches of 2 or more consecutive residues without any outlier are shown as a green connector. Residues present in the sample, but not in the model, are shown in grey.

- Molecule 1: Nitric oxide synthase, brain



- Molecule 1: Nitric oxide synthase, brain



4 Data and refinement statistics

Property	Value	Source
Space group	P 21 21 21	Depositor
Cell constants a, b, c, α , β , γ	52.25Å 122.14Å 164.78Å 90.00° 90.00° 90.00°	Depositor
Resolution (Å)	50.09 – 2.03 50.09 – 2.03	Depositor EDS
% Data completeness (in resolution range)	99.9 (50.09-2.03) 100.0 (50.09-2.03)	Depositor EDS
R_{merge}	0.14	Depositor
R_{sym}	0.14	Depositor
$\langle I/\sigma(I) \rangle$ ¹	1.31 (at 2.03Å)	Xtriage
Refinement program	PHENIX 1.8.2_1309	Depositor
R, R_{free}	0.199 , 0.243 0.196 , 0.242	Depositor DCC
R_{free} test set	3375 reflections (4.89%)	wwPDB-VP
Wilson B-factor (Å ²)	34.9	Xtriage
Anisotropy	0.576	Xtriage
Bulk solvent k_{sol} (e/Å ³), B_{sol} (Å ²)	0.33 , 43.7	EDS
L-test for twinning ²	$\langle L \rangle = 0.50$, $\langle L^2 \rangle = 0.33$	Xtriage
Estimated twinning fraction	No twinning to report.	Xtriage
F_o, F_c correlation	0.96	EDS
Total number of atoms	7306	wwPDB-VP
Average B, all atoms (Å ²)	51.0	wwPDB-VP

Xtriage's analysis on translational NCS is as follows: *The largest off-origin peak in the Patterson function is 4.94% of the height of the origin peak. No significant pseudotranslation is detected.*

¹Intensities estimated from amplitudes.

²Theoretical values of $\langle |L| \rangle$, $\langle L^2 \rangle$ for acentric reflections are 0.5, 0.333 respectively for untwinned datasets, and 0.375, 0.2 for perfectly twinned datasets.

5 Model quality

5.1 Standard geometry

Bond lengths and bond angles in the following residue types are not validated in this section: HEM, ZN, H4B, JHT

The Z score for a bond length (or angle) is the number of standard deviations the observed value is removed from the expected value. A bond length (or angle) with $|Z| > 5$ is considered an outlier worth inspection. RMSZ is the root-mean-square of all Z scores of the bond lengths (or angles).

Mol	Chain	Bond lengths		Bond angles	
		RMSZ	# Z >5	RMSZ	# Z >5
1	A	0.38	0/3473	0.52	0/4712
1	B	0.37	0/3449	0.50	0/4680
All	All	0.37	0/6922	0.51	0/9392

There are no bond length outliers.

There are no bond angle outliers.

There are no chirality outliers.

There are no planarity outliers.

5.2 Too-close contacts

In the following table, the Non-H and H(model) columns list the number of non-hydrogen atoms and hydrogen atoms in the chain respectively. The H(added) column lists the number of hydrogen atoms added and optimized by MolProbity. The Clashes column lists the number of clashes within the asymmetric unit, whereas Symm-Clashes lists symmetry related clashes.

Mol	Chain	Non-H	H(model)	H(added)	Clashes	Symm-Clashes
1	A	3371	0	3282	27	0
1	B	3345	0	3255	26	0
2	A	43	0	30	2	0
2	B	43	0	30	2	0
3	A	17	0	15	0	0
3	B	17	0	15	0	0
4	A	23	0	0	3	0
4	B	23	0	0	3	0
5	A	1	0	0	0	0
6	A	237	0	0	0	0
6	B	186	0	0	1	0
All	All	7306	0	6627	53	0

The all-atom clashscore is defined as the number of clashes found per 1000 atoms (including hydrogen atoms). The all-atom clashscore for this structure is 4.

All (53) close contacts within the same asymmetric unit are listed below, sorted by their clash magnitude.

Atom-1	Atom-2	Interatomic distance (Å)	Clash overlap (Å)
1:A:528:LEU:HD22	1:A:536:PRO:HB2	1.67	0.77
1:B:528:LEU:HD22	1:B:536:PRO:HB2	1.69	0.74
1:B:572:VAL:HG21	4:B:803:JHT:C13	2.21	0.71
1:B:662[B]:SER:OG	6:B:901:HOH:O	2.11	0.68
1:A:592:TRP:O	4:A:803:JHT:N19	2.28	0.66
1:B:490:TYR:HB2	1:B:498:LEU:HB3	1.80	0.63
1:B:364:LYS:NZ	1:B:368:ASP:OD2	2.33	0.62
1:A:480:TRP:HB2	1:A:528:LEU:HB3	1.81	0.62
1:A:557:GLU:OE2	1:A:560:LYS:NZ	2.34	0.61
1:B:501:PRO:HA	1:B:504:VAL:HG23	1.84	0.60
2:B:801:HEM:HBB2	2:B:801:HEM:HHC	1.83	0.60
1:A:483:GLN:HB2	1:A:486:ARG:HG3	1.83	0.59
1:A:572:VAL:HG21	4:A:803:JHT:C13	2.32	0.58
1:A:327:LEU:HB3	1:A:704:ARG:HH11	1.72	0.54
1:A:615:VAL:HG21	1:A:638:ILE:HD11	1.90	0.54
1:B:391:LYS:O	1:B:395:THR:OG1	2.27	0.52
1:B:304:ARG:HE	1:B:304:ARG:HA	1.75	0.52
1:A:691:SER:HB3	1:B:687:PRO:HB2	1.92	0.51
1:B:592:TRP:O	4:B:803:JHT:N19	2.44	0.50
1:A:327:LEU:HB3	1:A:704:ARG:NH1	2.28	0.49
1:A:530:GLN:HG3	1:A:534:ASN:O	2.12	0.49
1:A:460:LEU:HD12	1:A:592:TRP:HB3	1.96	0.48
1:A:667:MET:HE1	1:A:698:GLN:HG2	1.96	0.47
1:B:480:TRP:CE2	1:B:715:PRO:HB2	2.49	0.47
1:B:574:ASN:HD21	4:B:803:JHT:C05	2.27	0.47
1:B:414:TRP:CE3	1:B:426:TRP:HA	2.51	0.46
1:A:691:SER:CB	1:B:687:PRO:HB2	2.45	0.45
1:A:556:PHE:HB3	1:A:558:TRP:CE2	2.51	0.45
1:B:711:TYR:OH	2:B:801:HEM:O1D	2.30	0.45
1:B:505:GLN:O	1:B:509:ILE:HG13	2.17	0.45
1:A:625:LYS:HB2	1:A:625:LYS:HE3	1.71	0.44
1:A:326:THR:HG21	1:A:706:THR:HG22	1.99	0.44
1:A:408:TYR:CE1	1:A:412:HIS:CE1	3.06	0.44
1:A:304:ARG:HB3	1:A:304:ARG:HE	1.73	0.43
1:A:542:PRO:HA	1:A:543:PRO:HD3	1.87	0.43
1:B:483:GLN:HB2	1:B:486:ARG:HG3	1.99	0.43
2:A:801:HEM:HHC	2:A:801:HEM:HBB2	2.00	0.43

Continued on next page...

Continued from previous page...

Atom-1	Atom-2	Interatomic distance (Å)	Clash overlap (Å)
1:A:327:LEU:HD22	1:A:328:GLU:HG2	2.00	0.43
1:A:327:LEU:HD13	1:A:328:GLU:H	1.84	0.42
1:B:517:PRO:HA	1:B:518:PRO:HD3	1.88	0.42
1:A:414:TRP:CE3	1:A:426:TRP:HA	2.55	0.41
1:B:704:ARG:HG2	1:B:704:ARG:HH11	1.85	0.41
1:B:419:ARG:NH1	1:B:711:TYR:OH	2.52	0.41
1:A:633:GLN:HG3	1:B:636:VAL:HG11	2.02	0.41
1:B:483:GLN:HB2	1:B:486:ARG:CG	2.49	0.41
1:A:600:VAL:O	1:A:604:CYS:HB2	2.21	0.41
1:A:636:VAL:O	1:A:640:ILE:HG13	2.20	0.41
2:A:801:HEM:NB	4:A:803:JHT:C17	2.84	0.41
1:B:363:ALA:O	1:B:367:ILE:HG12	2.21	0.41
1:B:392:GLU:O	1:B:396:THR:OG1	2.29	0.41
1:B:547:LEU:HD21	1:B:651:VAL:HG22	2.03	0.41
1:A:302:CYS:HA	1:A:303:PRO:HD3	1.95	0.40
1:B:613:GLU:HG3	1:B:623:MET:HE3	2.03	0.40

There are no symmetry-related clashes.

5.3 Torsion angles [i](#)

5.3.1 Protein backbone [i](#)

In the following table, the Percentiles column shows the percent Ramachandran outliers of the chain as a percentile score with respect to all X-ray entries followed by that with respect to entries of similar resolution.

The Analysed column shows the number of residues for which the backbone conformation was analysed, and the total number of residues.

Mol	Chain	Analysed	Favoured	Allowed	Outliers	Percentiles	
1	A	411/421 (98%)	401 (98%)	10 (2%)	0	100	100
1	B	408/421 (97%)	398 (98%)	10 (2%)	0	100	100
All	All	819/842 (97%)	799 (98%)	20 (2%)	0	100	100

There are no Ramachandran outliers to report.

5.3.2 Protein sidechains ⓘ

In the following table, the Percentiles column shows the percent sidechain outliers of the chain as a percentile score with respect to all X-ray entries followed by that with respect to entries of similar resolution.

The Analysed column shows the number of residues for which the sidechain conformation was analysed, and the total number of residues.

Mol	Chain	Analysed	Rotameric	Outliers	Percentiles	
1	A	371/376 (99%)	360 (97%)	11 (3%)	41	40
1	B	368/376 (98%)	357 (97%)	11 (3%)	41	40
All	All	739/752 (98%)	717 (97%)	22 (3%)	42	40

All (22) residues with a non-rotameric sidechain are listed below:

Mol	Chain	Res	Type
1	A	327	LEU
1	A	328	GLU
1	A	341	MET
1	A	352	ASP
1	A	386	LEU
1	A	390	ASN
1	A	528	LEU
1	A	552	ARG
1	A	626	THR
1	A	672	ARG
1	A	691	SER
1	B	304	ARG
1	B	312[A]	GLU
1	B	312[B]	GLU
1	B	324	LYS
1	B	355	THR
1	B	395	THR
1	B	512	GLN
1	B	528	LEU
1	B	552	ARG
1	B	650	LYS
1	B	718	THR

Some sidechains can be flipped to improve hydrogen bonding and reduce clashes. All (3) such sidechains are listed below:

Mol	Chain	Res	Type
1	B	390	ASN
1	B	512	GLN
1	B	513	GLN

5.3.3 RNA ⓘ

There are no RNA molecules in this entry.

5.4 Non-standard residues in protein, DNA, RNA chains ⓘ

There are no non-standard protein/DNA/RNA residues in this entry.

5.5 Carbohydrates ⓘ

There are no carbohydrates in this entry.

5.6 Ligand geometry ⓘ

Of 7 ligands modelled in this entry, 1 is monoatomic - leaving 6 for Mogul analysis.

In the following table, the Counts columns list the number of bonds (or angles) for which Mogul statistics could be retrieved, the number of bonds (or angles) that are observed in the model and the number of bonds (or angles) that are defined in the Chemical Component Dictionary. The Link column lists molecule types, if any, to which the group is linked. The Z score for a bond length (or angle) is the number of standard deviations the observed value is removed from the expected value. A bond length (or angle) with $|Z| > 2$ is considered an outlier worth inspection. RMSZ is the root-mean-square of all Z scores of the bond lengths (or angles).

Mol	Type	Chain	Res	Link	Bond lengths			Bond angles		
					Counts	RMSZ	$\# Z > 2$	Counts	RMSZ	$\# Z > 2$
3	H4B	B	802	-	16,18,18	0.94	0	11,26,26	2.67	4 (36%)
3	H4B	A	802	-	16,18,18	0.86	0	11,26,26	2.54	6 (54%)
4	JHT	B	803	-	25,25,25	0.98	1 (4%)	33,34,34	1.48	5 (15%)
2	HEM	A	801	1	27,50,50	2.14	5 (18%)	17,82,82	2.12	3 (17%)
2	HEM	B	801	1	27,50,50	2.21	7 (25%)	17,82,82	1.93	4 (23%)
4	JHT	A	803	-	25,25,25	1.07	3 (12%)	33,34,34	1.61	7 (21%)

In the following table, the Chirals column lists the number of chiral outliers, the number of chiral centers analysed, the number of these observed in the model and the number defined in the Chemical Component Dictionary. Similar counts are reported in the Torsion and Rings columns.

'-' means no outliers of that kind were identified.

Mol	Type	Chain	Res	Link	Chirals	Torsions	Rings
3	H4B	B	802	-	-	0/8/17/17	0/2/2/2
3	H4B	A	802	-	-	0/8/17/17	0/2/2/2
4	JHT	B	803	-	-	5/10/10/10	0/3/3/3
2	HEM	A	801	1	-	0/6/54/54	-
2	HEM	B	801	1	-	0/6/54/54	-
4	JHT	A	803	-	-	5/10/10/10	0/3/3/3

All (16) bond length outliers are listed below:

Mol	Chain	Res	Type	Atoms	Z	Observed(Å)	Ideal(Å)
2	B	801	HEM	C3B-C2B	-5.16	1.33	1.40
2	A	801	HEM	C3D-C2D	5.16	1.53	1.37
2	B	801	HEM	C3D-C2D	4.96	1.52	1.37
2	A	801	HEM	C3B-C2B	-4.84	1.33	1.40
2	B	801	HEM	C3C-CAC	3.90	1.55	1.47
2	B	801	HEM	C3B-CAB	3.78	1.55	1.47
2	A	801	HEM	C3C-CAC	3.67	1.55	1.47
2	A	801	HEM	C3B-CAB	3.67	1.55	1.47
2	A	801	HEM	C3C-C2C	-3.60	1.35	1.40
2	B	801	HEM	C3C-C2C	-3.42	1.35	1.40
4	A	803	JHT	C22-C21	-2.71	1.37	1.41
2	B	801	HEM	C1D-ND	2.25	1.40	1.36
4	B	803	JHT	C22-C21	-2.21	1.38	1.41
2	B	801	HEM	C1C-C2C	2.14	1.47	1.42
4	A	803	JHT	C21-N20	-2.13	1.34	1.37
4	A	803	JHT	C15-C21	-2.10	1.38	1.42

All (29) bond angle outliers are listed below:

Mol	Chain	Res	Type	Atoms	Z	Observed(°)	Ideal(°)
3	B	802	H4B	C4-C4A-C8A	6.33	120.19	114.57
2	A	801	HEM	CBA-CAA-C2A	-5.48	102.39	112.49
2	A	801	HEM	CBD-CAD-C3D	-4.57	104.06	112.48
3	A	802	H4B	C4-C4A-C8A	4.36	118.44	114.57
2	B	801	HEM	CBA-CAA-C2A	-4.32	104.52	112.49
2	B	801	HEM	CBD-CAD-C3D	-4.06	104.99	112.48
4	A	803	JHT	C23-C04-N02	-3.98	116.73	121.33
4	A	803	JHT	C11-C12-C22	-3.81	114.70	121.51
4	B	803	JHT	C23-C04-N02	-3.73	117.02	121.33
3	A	802	H4B	N3-C2-N1	-3.46	119.99	125.42
4	A	803	JHT	C11-N10-C09	-3.41	103.94	112.54

Continued on next page...

Continued from previous page...

Mol	Chain	Res	Type	Atoms	Z	Observed(°)	Ideal(°)
3	A	802	H4B	C4-C4A-N5	3.33	121.91	119.12
3	B	802	H4B	C4-N3-C2	3.18	120.98	115.93
3	A	802	H4B	C4-N3-C2	3.15	120.93	115.93
2	A	801	HEM	C1D-C2D-C3D	-3.14	104.81	107.00
4	B	803	JHT	C11-N10-C09	-3.07	104.79	112.54
4	B	803	JHT	C11-C12-C22	-3.00	116.15	121.51
3	B	802	H4B	N3-C2-N1	-2.82	121.00	125.42
2	B	801	HEM	CMA-C3A-C4A	-2.79	124.18	128.46
3	A	802	H4B	C2-N1-C8A	2.73	120.66	114.54
4	A	803	JHT	C17-C18-N20	-2.46	119.12	122.08
2	B	801	HEM	C1D-C2D-C3D	-2.33	105.37	107.00
3	B	802	H4B	C2-N1-C8A	2.31	119.72	114.54
4	A	803	JHT	C11-C12-C13	2.25	125.58	120.91
4	B	803	JHT	C17-C18-N20	-2.16	119.49	122.08
4	B	803	JHT	C08-C09-N10	-2.11	107.32	112.80
3	A	802	H4B	N2-C2-N3	2.08	120.48	117.25
4	A	803	JHT	C08-C09-N10	-2.01	107.59	112.80
4	A	803	JHT	C16-C17-C18	2.01	121.05	119.48

There are no chirality outliers.

All (10) torsion outliers are listed below:

Mol	Chain	Res	Type	Atoms
4	A	803	JHT	C05-C04-N02-C01
4	A	803	JHT	C23-C04-N02-C01
4	A	803	JHT	C05-C04-N02-C03
4	B	803	JHT	C23-C04-N02-C01
4	B	803	JHT	C05-C04-N02-C03
4	A	803	JHT	C23-C04-N02-C03
4	B	803	JHT	C05-C04-N02-C01
4	B	803	JHT	C23-C04-N02-C03
4	A	803	JHT	C08-C09-N10-C11
4	B	803	JHT	C08-C09-N10-C11

There are no ring outliers.

4 monomers are involved in 9 short contacts:

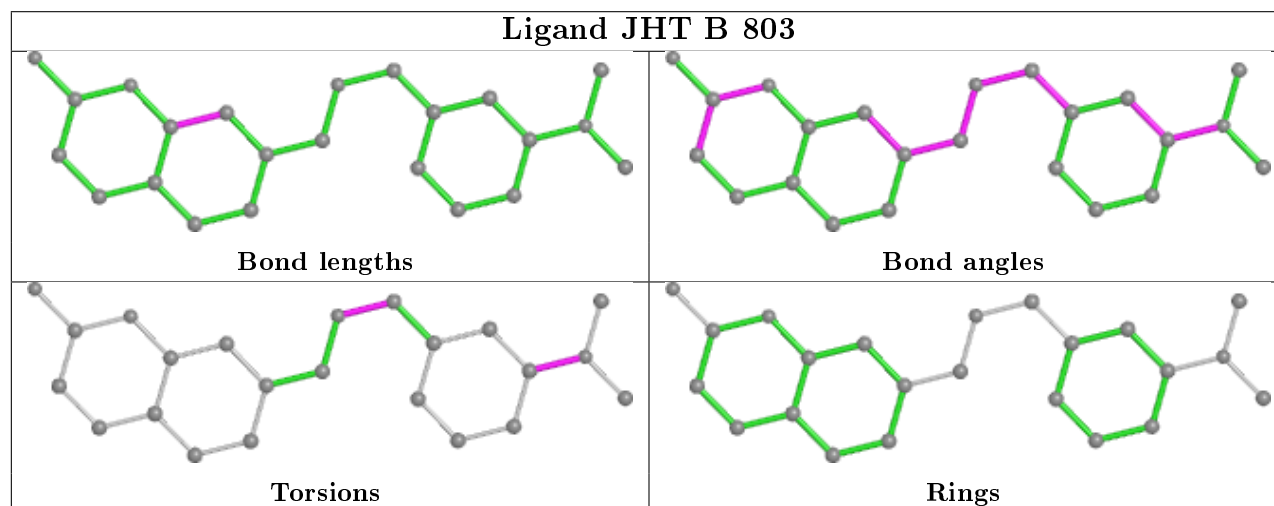
Mol	Chain	Res	Type	Clashes	Symm-Clashes
4	B	803	JHT	3	0
2	A	801	HEM	2	0
2	B	801	HEM	2	0

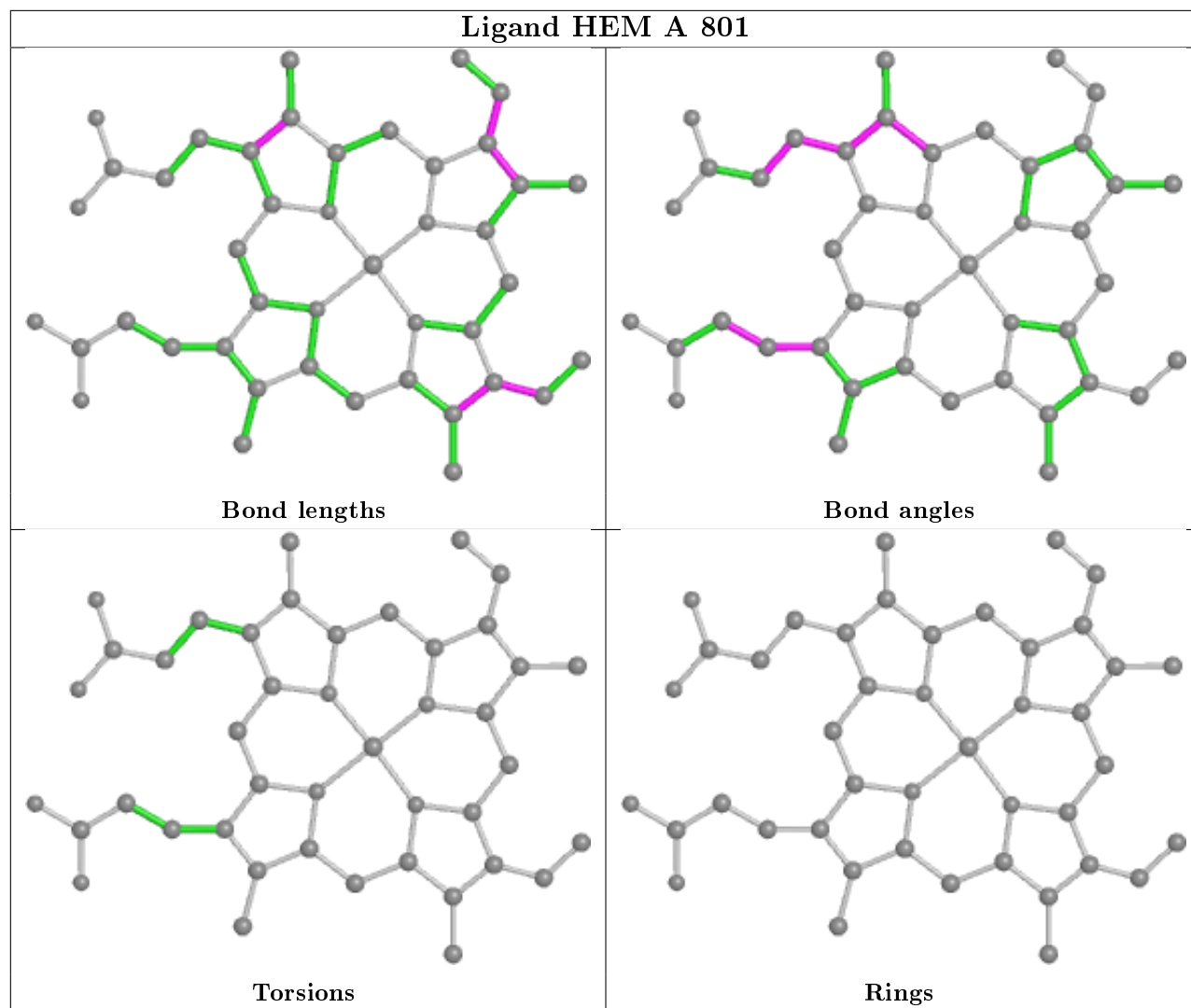
Continued on next page...

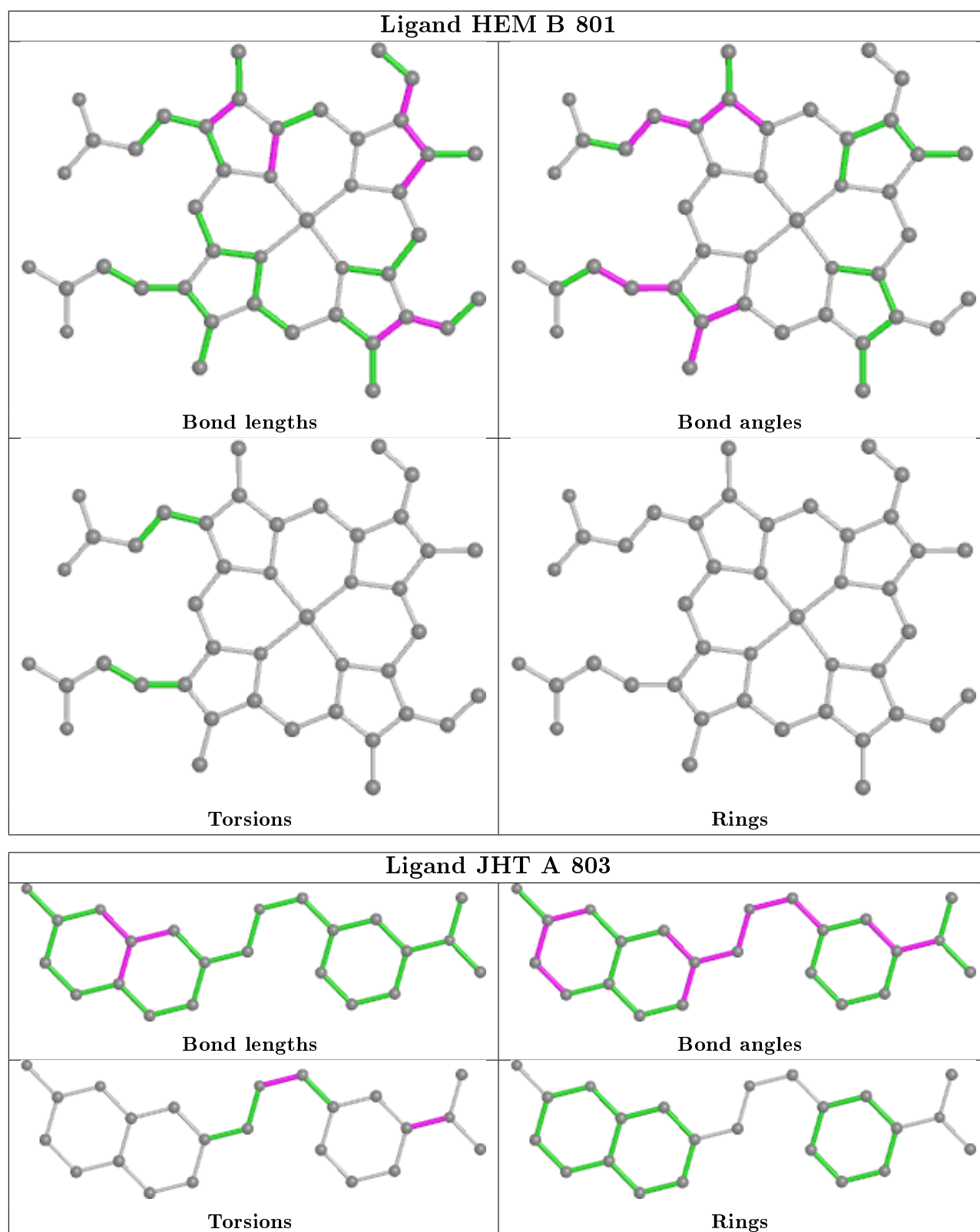
Continued from previous page...

Mol	Chain	Res	Type	Clashes	Symm-Clashes
4	A	803	JHT	3	0

The following is a two-dimensional graphical depiction of Mogul quality analysis of bond lengths, bond angles, torsion angles, and ring geometry for all instances of the Ligand of Interest. In addition, ligands with molecular weight > 250 and outliers as shown on the validation Tables will also be included. For torsion angles, if less than 5% of the Mogul distribution of torsion angles is within 10 degrees of the torsion angle in question, then that torsion angle is considered an outlier. Any bond that is central to one or more torsion angles identified as an outlier by Mogul will be highlighted in the graph. For rings, the root-mean-square deviation (RMSD) between the ring in question and similar rings identified by Mogul is calculated over all ring torsion angles. If the average RMSD is greater than 60 degrees and the minimal RMSD between the ring in question and any Mogul-identified rings is also greater than 60 degrees, then that ring is considered an outlier. The outliers are highlighted in purple. The color gray indicates Mogul did not find sufficient equivalents in the CSD to analyse the geometry.







5.7 Other polymers ⓘ

There are no such residues in this entry.

5.8 Polymer linkage issues

There are no chain breaks in this entry.

6 Fit of model and data [i](#)

6.1 Protein, DNA and RNA chains [i](#)

In the following table, the column labelled ‘#RSRZ> 2’ contains the number (and percentage) of RSRZ outliers, followed by percent RSRZ outliers for the chain as percentile scores relative to all X-ray entries and entries of similar resolution. The OWAB column contains the minimum, median, 95th percentile and maximum values of the occupancy-weighted average B-factor per residue. The column labelled ‘Q< 0.9’ lists the number of (and percentage) of residues with an average occupancy less than 0.9.

Mol	Chain	Analysed	<RSRZ>	#RSRZ>2	OWAB(Å ²)	Q<0.9
1	A	413/421 (98%)	0.05	4 (0%) 82 82	25, 43, 74, 103	0
1	B	409/421 (97%)	0.20	14 (3%) 45 45	26, 53, 95, 116	0
All	All	822/842 (97%)	0.12	18 (2%) 62 61	25, 48, 89, 116	0

All (18) RSRZ outliers are listed below:

Mol	Chain	Res	Type	RSRZ
1	B	721	TRP	3.4
1	B	357	ASP	3.4
1	B	326	THR	3.2
1	B	720	VAL	3.2
1	A	353	VAL	2.9
1	B	474	LYS	2.7
1	B	360	PHE	2.5
1	B	374	ILE	2.4
1	A	304	ARG	2.4
1	A	334	TYR	2.3
1	A	624	ARG	2.3
1	B	556	PHE	2.2
1	B	358	GLN	2.2
1	B	397	SER	2.2
1	B	305	PHE	2.1
1	B	557	GLU	2.1
1	B	356	LYS	2.0
1	B	493	PRO	2.0

6.2 Non-standard residues in protein, DNA, RNA chains [i](#)

There are no non-standard protein/DNA/RNA residues in this entry.

6.3 Carbohydrates

There are no carbohydrates in this entry.

6.4 Ligands

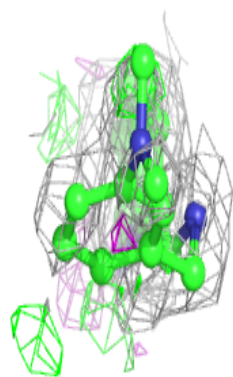
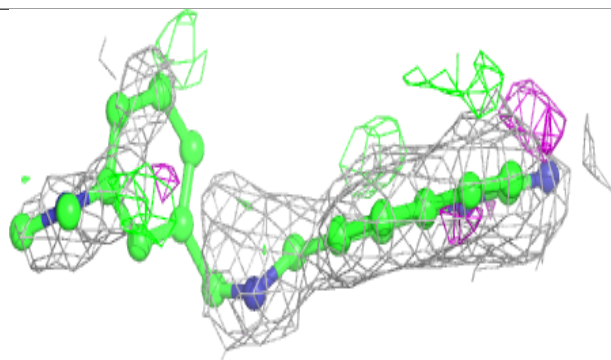
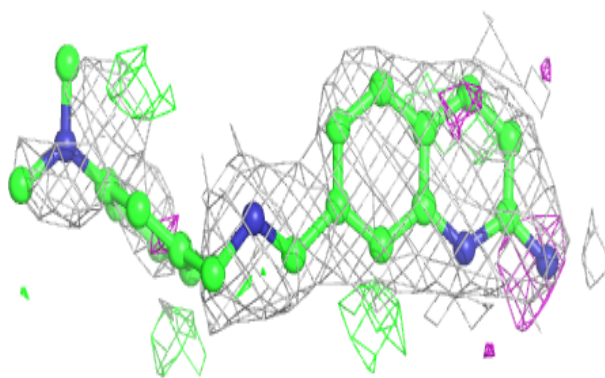
In the following table, the Atoms column lists the number of modelled atoms in the group and the number defined in the chemical component dictionary. The B-factors column lists the minimum, median, 95th percentile and maximum values of B factors of atoms in the group. The column labelled 'Q< 0.9' lists the number of atoms with occupancy less than 0.9.

Mol	Type	Chain	Res	Atoms	RSCC	RSR	B-factors(Å ²)	Q<0.9
4	JHT	A	803	23/23	0.85	0.25	41,54,106,107	0
4	JHT	B	803	23/23	0.87	0.31	33,62,101,101	0
3	H4B	B	802	17/17	0.96	0.10	26,35,42,46	0
2	HEM	A	801	43/43	0.98	0.15	21,28,39,41	0
2	HEM	B	801	43/43	0.98	0.11	24,32,44,53	0
3	H4B	A	802	17/17	0.98	0.13	30,35,40,41	0
5	ZN	A	804	1/1	1.00	0.13	36,36,36,36	0

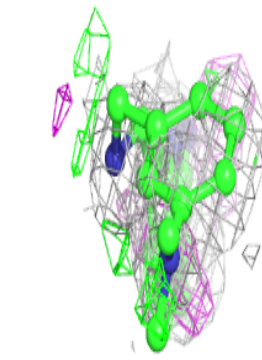
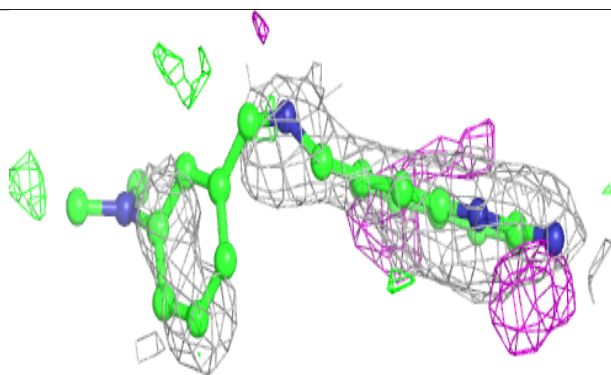
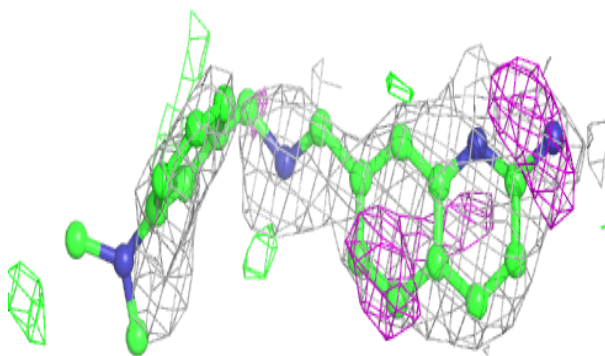
The following is a graphical depiction of the model fit to experimental electron density of all instances of the Ligand of Interest. In addition, ligands with molecular weight > 250 and outliers as shown on the geometry validation Tables will also be included. Each fit is shown from different orientation to approximate a three-dimensional view.

Electron density around JHT A 803:

$2mF_o-DF_c$ (at 0.7 rmsd) in gray
 mF_o-DF_c (at 3 rmsd) in purple (negative)
and green (positive)

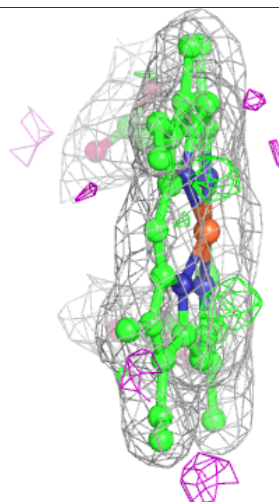
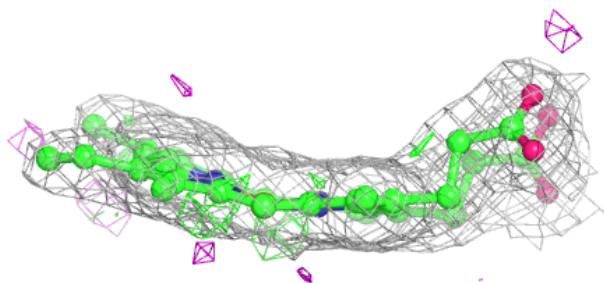
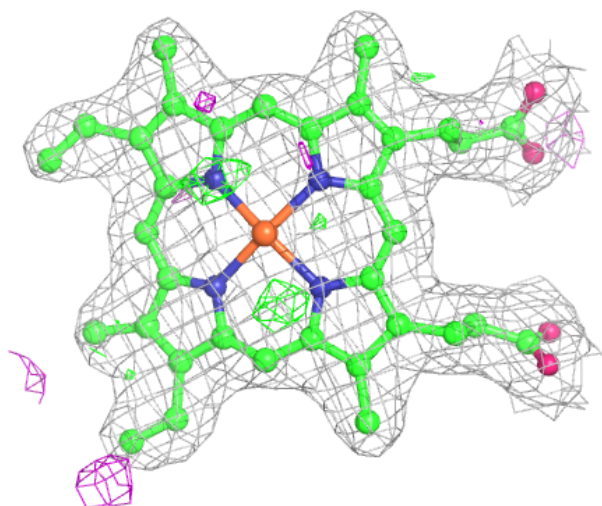
**Electron density around JHT B 803:**

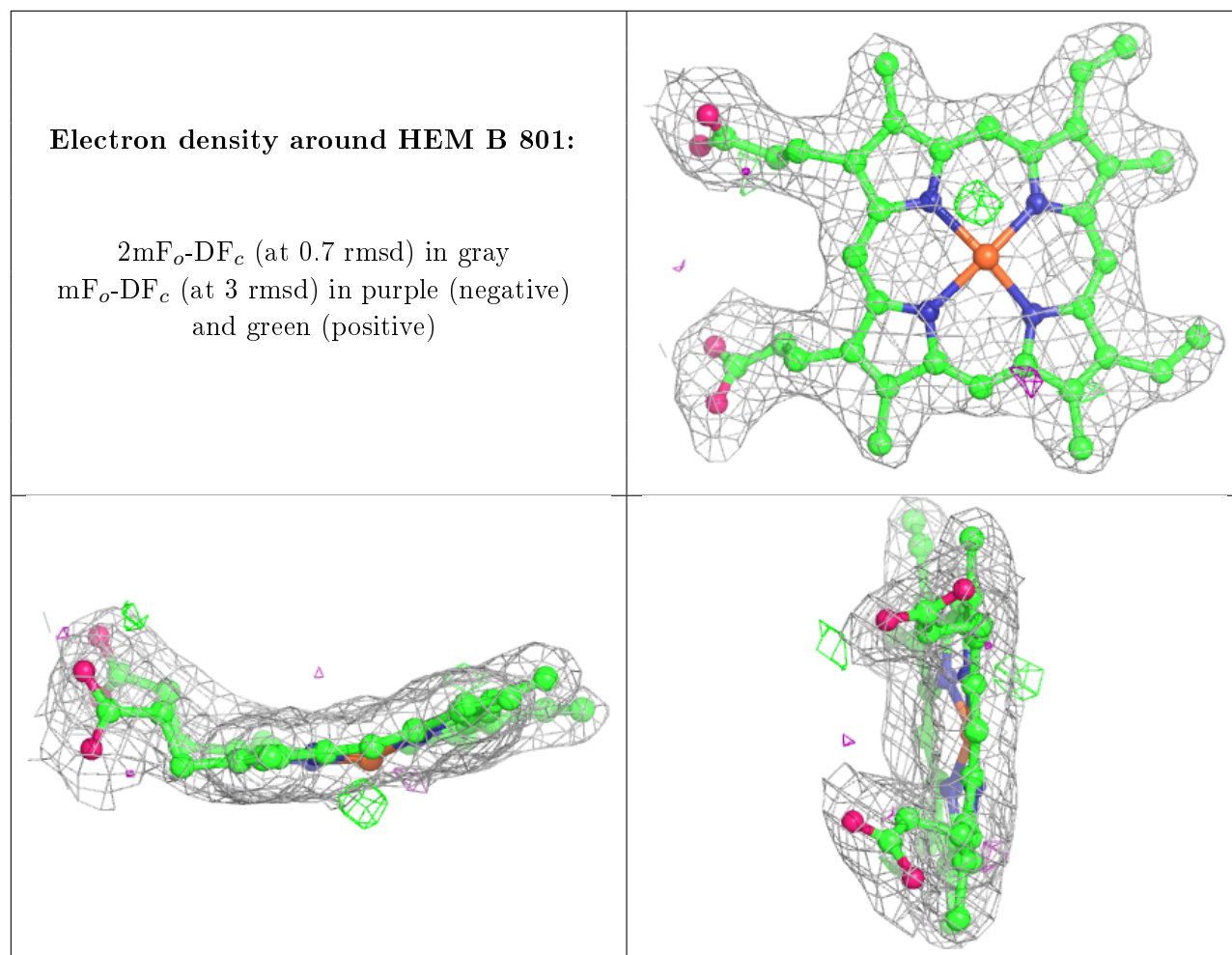
$2mF_o-DF_c$ (at 0.7 rmsd) in gray
 mF_o-DF_c (at 3 rmsd) in purple (negative)
and green (positive)



Electron density around HEM A 801:

$2mF_o-DF_c$ (at 0.7 rmsd) in gray
 mF_o-DF_c (at 3 rmsd) in purple (negative)
and green (positive)





6.5 Other polymers [i](#)

There are no such residues in this entry.