



Full wwPDB X-ray Structure Validation Report ⓘ

May 23, 2020 – 01:27 am BST

PDB ID : 2VVC
Title : Aminopyrrolidine Factor Xa inhibitor
Authors : Groebke-Zbinden, K.; Banner, D.W.; Benz, J.M.; Blasco, F.; Decoret, G.; Himber, J.; Kuhn, B.; Panday, N.; Ricklin, F.; Risch, P.; Schlatter, D.; Stahl, M.; Unger, R.; Haap, W.
Deposited on : 2008-06-05
Resolution : 1.95 Å(reported)

This is a Full wwPDB X-ray Structure Validation Report for a publicly released PDB entry.

We welcome your comments at validation@mail.wwpdb.org

A user guide is available at

<https://www.wwpdb.org/validation/2017/XrayValidationReportHelp>

with specific help available everywhere you see the ⓘ symbol.

The following versions of software and data (see [references ⓘ](#)) were used in the production of this report:

MolProbity : 4.02b-467
Mogul : 1.8.5 (274361), CSD as541be (2020)
Xtriage (Phenix) : 1.13
EDS : 2.11
buster-report : 1.1.7 (2018)
Percentile statistics : 20191225.v01 (using entries in the PDB archive December 25th 2019)
Refmac : 5.8.0158
CCP4 : 7.0.044 (Gargrove)
Ideal geometry (proteins) : Engh & Huber (2001)
Ideal geometry (DNA, RNA) : Parkinson et al. (1996)
Validation Pipeline (wwPDB-VP) : 2.11

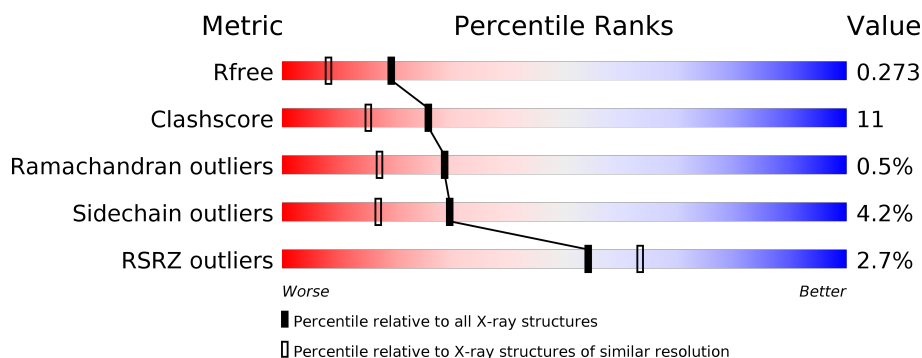
1 Overall quality at a glance

The following experimental techniques were used to determine the structure:

X-RAY DIFFRACTION

The reported resolution of this entry is 1.95 Å.

Percentile scores (ranging between 0-100) for global validation metrics of the entry are shown in the following graphic. The table shows the number of entries on which the scores are based.



Metric	Whole archive (#Entries)	Similar resolution (#Entries, resolution range(Å))
R_{free}	130704	2580 (1.96-1.96)
Clashscore	141614	2705 (1.96-1.96)
Ramachandran outliers	138981	2678 (1.96-1.96)
Sidechain outliers	138945	2678 (1.96-1.96)
RSRZ outliers	127900	2539 (1.96-1.96)

The table below summarises the geometric issues observed across the polymeric chains and their fit to the electron density. The red, orange, yellow and green segments on the lower bar indicate the fraction of residues that contain outliers for ≥ 3 , 2, 1 and 0 types of geometric quality criteria respectively. A grey segment represents the fraction of residues that are not modelled. The numeric value for each fraction is indicated below the corresponding segment, with a dot representing fractions $\leq 5\%$. The upper red bar (where present) indicates the fraction of residues that have poor fit to the electron density. The numeric value is given above the bar.

Mol	Chain	Length	Quality of chain
1	A	241	<div> <div>2%</div> <div> <div></div> <div>73%</div> <div>22%</div> <div>• •</div> </div> </div>
1	B	241	<div> <div>3%</div> <div> <div></div> <div>73%</div> <div>20%</div> <div>7%</div> </div> </div>
2	K	55	<div> <div>2%</div> <div> <div></div> <div>76%</div> <div>18%</div> <div>• •</div> </div> </div>
2	L	55	<div> <div>2%</div> <div> <div></div> <div>76%</div> <div>16%</div> <div>• 5%</div> </div> </div>

2 Entry composition

There are 6 unique types of molecules in this entry. The entry contains 5086 atoms, of which 0 are hydrogens and 0 are deuteriums.

In the tables below, the ZeroOcc column contains the number of atoms modelled with zero occupancy, the AltConf column contains the number of residues with at least one atom in alternate conformation and the Trace column contains the number of residues modelled with at most 2 atoms.

- Molecule 1 is a protein called ACTIVATED FACTOR XA HEAVY CHAIN.

Mol	Chain	Residues	Atoms					ZeroOcc	AltConf	Trace
1	A	233	Total	C	N	O	S	0	2	0
			1863	1172	324	353	14			
1	B	225	Total	C	N	O	S	0	6	0
			1791	1134	311	332	14			

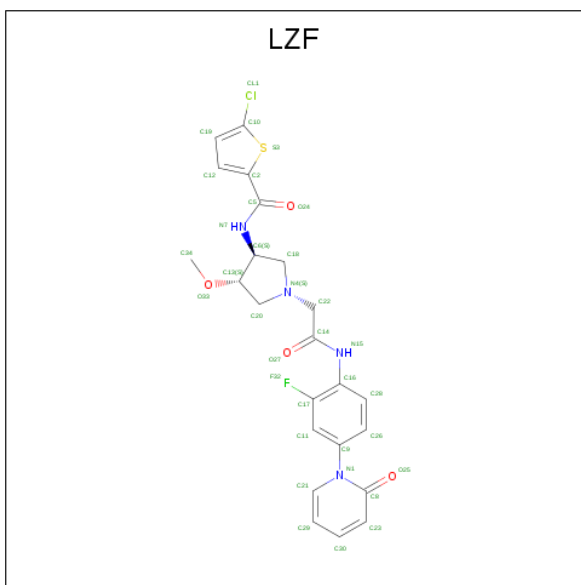
There are 2 discrepancies between the modelled and reference sequences:

Chain	Residue	Modelled	Actual	Comment	Reference
A	150	GLU	ARG	engineered mutation	UNP P00742
B	150	GLU	ARG	engineered mutation	UNP P00742

- Molecule 2 is a protein called FACTOR X LIGHT CHAIN.

Mol	Chain	Residues	Atoms					ZeroOcc	AltConf	Trace
2	K	54	Total	C	N	O	S	0	0	1
			396	237	71	81	7			
2	L	52	Total	C	N	O	S	0	1	0
			391	235	67	82	7			

- Molecule 3 is 5-chloro-N-[(3S,4S)-1-(2-{[2-fluoro-4-(2-oxopyridin-1(2H)-yl)phenyl]amino}-2-oxoethyl)-4-methoxypyrrolidin-3-yl]thiophene-2-carboxamide (three-letter code: LZF) (formula: C₂₃H₂₂ClFN₄O₄S).



Mol	Chain	Residues	Atoms							ZeroOcc	AltConf
3	A	1	Total 34	C 23	Cl 1	F 1	N 4	O 4	S 1	0	0
3	B	1	Total 34	C 23	Cl 1	F 1	N 4	O 4	S 1	0	0

- Molecule 4 is CALCIUM ION (three-letter code: CA) (formula: Ca).

Mol	Chain	Residues	Atoms	ZeroOcc	AltConf
4	A	1	Total Ca 1 1	0	0

- Molecule 5 is SODIUM ION (three-letter code: NA) (formula: Na).

Mol	Chain	Residues	Atoms	ZeroOcc	AltConf
5	B	1	Total Na 1 1	0	0
5	A	1	Total Na 1 1	0	0

- Molecule 6 is water.

Mol	Chain	Residues	Atoms	ZeroOcc	AltConf
6	A	278	Total O 278 278	0	0
6	B	209	Total O 209 209	0	0

Continued on next page...

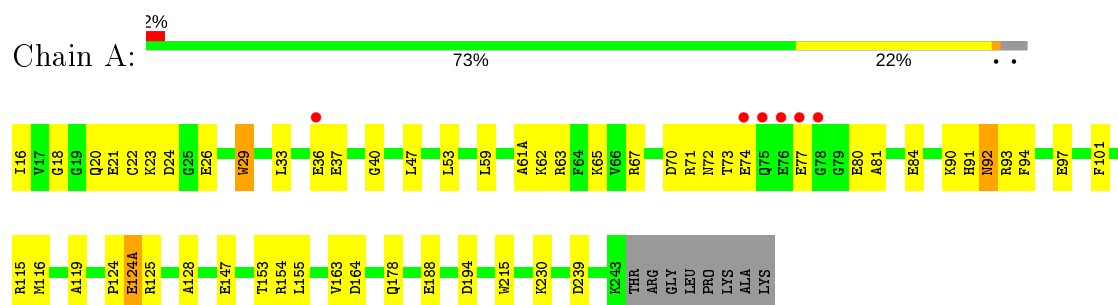
Continued from previous page...

Mol	Chain	Residues	Atoms		ZeroOcc	AltConf
6	K	43	Total	O	0	0
			43	43		
6	L	44	Total	O	0	0
			44	44		

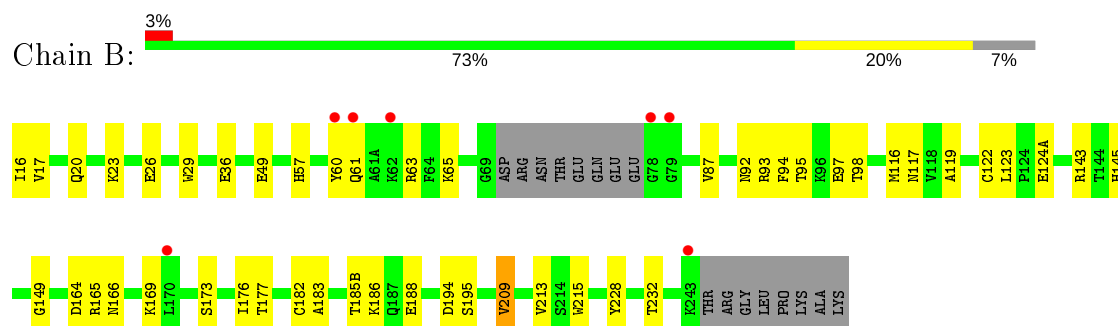
3 Residue-property plots [i](#)

These plots are drawn for all protein, RNA and DNA chains in the entry. The first graphic for a chain summarises the proportions of the various outlier classes displayed in the second graphic. The second graphic shows the sequence view annotated by issues in geometry and electron density. Residues are color-coded according to the number of geometric quality criteria for which they contain at least one outlier: green = 0, yellow = 1, orange = 2 and red = 3 or more. A red dot above a residue indicates a poor fit to the electron density ($RSRZ > 2$). Stretches of 2 or more consecutive residues without any outlier are shown as a green connector. Residues present in the sample, but not in the model, are shown in grey.

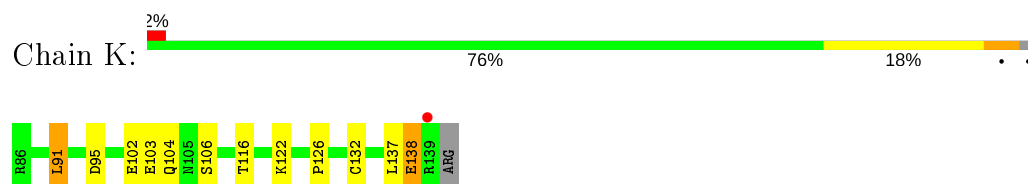
- Molecule 1: ACTIVATED FACTOR XA HEAVY CHAIN



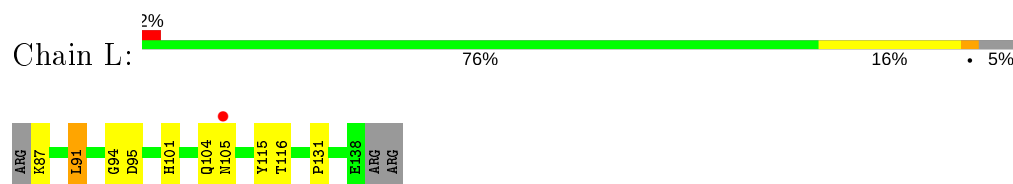
- Molecule 1: ACTIVATED FACTOR XA HEAVY CHAIN



- Molecule 2: FACTOR X LIGHT CHAIN



- Molecule 2: FACTOR X LIGHT CHAIN



4 Data and refinement statistics

Property	Value	Source
Space group	P 1 21 1	Depositor
Cell constants a, b, c, α , β , γ	48.96Å 77.19Å 74.76Å 90.00° 92.12° 90.00°	Depositor
Resolution (Å)	74.74 – 1.95 19.30 – 1.95	Depositor EDS
% Data completeness (in resolution range)	95.1 (74.74-1.95) 81.7 (19.30-1.95)	Depositor EDS
R_{merge}	0.12	Depositor
R_{sym}	(Not available)	Depositor
$\langle I/\sigma(I) \rangle$ ¹	3.03 (at 1.96Å)	Xtriage
Refinement program	REFMAC 5.4.0067	Depositor
R, R_{free}	0.199 , 0.275 0.206 , 0.273	Depositor DCC
R_{free} test set	1849 reflections (5.07%)	wwPDB-VP
Wilson B-factor (Å ²)	17.6	Xtriage
Anisotropy	0.034	Xtriage
Bulk solvent k_{sol} (e/Å ³), B_{sol} (Å ²)	0.27 , -1.8	EDS
L-test for twinning ²	$\langle L \rangle = 0.46$, $\langle L^2 \rangle = 0.28$	Xtriage
Estimated twinning fraction	0.036 for -h,-l,-k 0.019 for -h,l,k 0.079 for h,-k,-l	Xtriage
F_o, F_c correlation	0.92	EDS
Total number of atoms	5086	wwPDB-VP
Average B, all atoms (Å ²)	6.0	wwPDB-VP

Xtriage's analysis on translational NCS is as follows: *The largest off-origin peak in the Patterson function is 6.95% of the height of the origin peak. No significant pseudotranslation is detected.*

¹Intensities estimated from amplitudes.

²Theoretical values of $\langle |L| \rangle$, $\langle L^2 \rangle$ for acentric reflections are 0.5, 0.333 respectively for untwinned datasets, and 0.375, 0.2 for perfectly twinned datasets.

5 Model quality

5.1 Standard geometry

Bond lengths and bond angles in the following residue types are not validated in this section: NA, CA, LZP

The Z score for a bond length (or angle) is the number of standard deviations the observed value is removed from the expected value. A bond length (or angle) with $|Z| > 5$ is considered an outlier worth inspection. RMSZ is the root-mean-square of all Z scores of the bond lengths (or angles).

Mol	Chain	Bond lengths		Bond angles	
		RMSZ	$\# Z > 5$	RMSZ	$\# Z > 5$
1	A	0.60	1/1901 (0.1%)	0.68	0/2560
1	B	0.53	0/1828	0.62	1/2461 (0.0%)
2	K	0.63	0/402	0.75	0/543
2	L	0.61	0/397	0.65	0/537
All	All	0.58	1/4528 (0.0%)	0.66	1/6101 (0.0%)

All (1) bond length outliers are listed below:

Mol	Chain	Res	Type	Atoms	Z	Observed(Å)	Ideal(Å)
1	A	22	CYS	CB-SG	-6.52	1.71	1.82

All (1) bond angle outliers are listed below:

Mol	Chain	Res	Type	Atoms	Z	Observed(°)	Ideal(°)
1	B	182	CYS	CA-CB-SG	-5.79	103.58	114.00

There are no chirality outliers.

There are no planarity outliers.

5.2 Too-close contacts

In the following table, the Non-H and H(model) columns list the number of non-hydrogen atoms and hydrogen atoms in the chain respectively. The H(added) column lists the number of hydrogen atoms added and optimized by MolProbity. The Clashes column lists the number of clashes within the asymmetric unit, whereas Symm-Clashes lists symmetry related clashes.

Mol	Chain	Non-H	H(model)	H(added)	Clashes	Symm-Clashes
1	A	1863	0	1811	44	0
1	B	1791	0	1743	38	0

Continued on next page...

Continued from previous page...

Mol	Chain	Non-H	H(model)	H(added)	Clashes	Symm-Clashes
2	K	396	0	362	6	0
2	L	391	0	355	8	0
3	A	34	0	22	2	0
3	B	34	0	22	2	0
4	A	1	0	0	0	0
5	A	1	0	0	0	0
5	B	1	0	0	0	0
6	A	278	0	0	11	1
6	B	209	0	0	9	2
6	K	43	0	0	2	0
6	L	44	0	0	2	0
All	All	5086	0	4315	93	2

The all-atom clashscore is defined as the number of clashes found per 1000 atoms (including hydrogen atoms). The all-atom clashscore for this structure is 11.

All (93) close contacts within the same asymmetric unit are listed below, sorted by their clash magnitude.

Atom-1	Atom-2	Interatomic distance (Å)	Clash overlap (Å)
1:A:62:LYS:HB2	6:A:2054:HOH:O	1.67	0.93
1:A:72:ASN:HA	1:A:153:THR:O	1.79	0.81
1:A:74:GLU:HG3	1:A:153:THR:HG21	1.62	0.80
1:A:124(A):GLU:OE2	2:L:101:HIS:CE1	2.33	0.80
1:A:124(A):GLU:OE2	2:L:101:HIS:HE1	1.65	0.80
1:A:163:VAL:CG1	6:A:2264:HOH:O	2.34	0.74
1:A:92:ASN:ND2	1:A:93:ARG:HG3	2.05	0.72
1:B:57:HIS:NE2	1:B:195:SER:HB3	2.07	0.70
1:A:93:ARG:NH2	6:A:2109:HOH:O	2.16	0.68
1:A:92:ASN:HD22	1:A:93:ARG:N	1.93	0.67
1:B:186:LYS:NZ	1:B:188:GLU:OE1	2.24	0.67
1:A:71:ARG:O	1:A:154:ARG:HA	1.99	0.63
1:B:36:GLU:CD	1:B:63:ARG:HE	2.03	0.62
1:B:164:ASP:OD2	1:B:166:ASN:HB2	2.01	0.61
1:A:163:VAL:HG13	6:A:2264:HOH:O	1.97	0.61
1:A:47:LEU:HD11	1:A:53:LEU:HB2	1.82	0.60
1:B:123:LEU:HD23	1:B:209[A]:VAL:HG11	1.84	0.59
1:A:74:GLU:CG	1:A:153:THR:HG21	2.31	0.59
1:A:92:ASN:C	1:A:92:ASN:HD22	2.07	0.58
1:B:97:GLU:HB2	6:B:2082:HOH:O	2.04	0.58
1:A:18:GLY:HA3	1:A:188:GLU:HG2	1.86	0.58
1:A:65:LYS:HD3	6:A:2094:HOH:O	2.04	0.57

Continued on next page...

Continued from previous page...

Atom-1	Atom-2	Interatomic distance (Å)	Clash overlap (Å)
1:B:95:THR:OG1	1:B:97:GLU:HB3	2.06	0.55
1:A:65:LYS:HD2	1:A:84:GLU:HG2	1.88	0.55
1:B:65:LYS:HG3	6:B:2018:HOH:O	2.07	0.54
1:B:215:TRP:CE2	3:B:1244:LZF:H21	2.42	0.54
1:B:209[A]:VAL:CG1	1:B:209[A]:VAL:O	2.55	0.54
1:A:23:LYS:O	1:A:26[A]:GLU:HB2	2.07	0.54
1:B:183:ALA:HB3	1:B:228:TYR:CE2	2.42	0.54
1:A:33:LEU:O	1:A:40:GLY:HA2	2.07	0.54
1:B:215:TRP:CD2	3:B:1244:LZF:H21	2.42	0.53
2:K:95:ASP:HB3	2:K:122:LYS:HD3	1.91	0.53
1:A:124(A):GLU:OE1	1:A:125:ARG:N	2.41	0.53
1:A:36:GLU:OE2	1:A:63:ARG:CZ	2.58	0.52
1:A:71:ARG:O	1:A:155:LEU:N	2.40	0.52
1:A:77:GLU:HA	6:A:2078:HOH:O	2.10	0.52
1:B:116:MET:O	1:B:117:ASN:HB2	2.11	0.51
2:L:87:LYS:HG3	6:L:2001:HOH:O	2.11	0.51
1:A:92:ASN:HD21	1:A:93:ARG:HG3	1.76	0.50
1:B:232:THR:HG23	6:B:2187:HOH:O	2.10	0.50
1:B:61:GLN:HG3	6:B:2041:HOH:O	2.11	0.50
1:A:77:GLU:CB	6:A:2084:HOH:O	2.60	0.49
1:A:97:GLU:HG3	6:K:2005:HOH:O	2.12	0.49
1:B:195:SER:HA	1:B:213:VAL:HG12	1.94	0.48
1:B:65:LYS:CG	6:B:2018:HOH:O	2.61	0.48
1:B:93:ARG:NH1	6:B:2078:HOH:O	2.43	0.48
1:A:124:PRO:HB2	1:A:128:ALA:HB2	1.95	0.48
2:K:91:LEU:HD12	2:K:91:LEU:HA	1.71	0.48
2:L:94:GLY:O	2:L:95:ASP:HB2	2.13	0.48
1:A:94:PHE:HB2	1:A:101:PHE:O	2.14	0.47
1:B:60:TYR:CE1	1:B:94:PHE:HE2	2.33	0.47
1:A:93:ARG:NE	6:A:2109:HOH:O	2.46	0.47
1:A:81:ALA:HB3	1:A:115:ARG:HH22	1.80	0.47
1:A:73:THR:N	1:A:153:THR:O	2.47	0.47
1:B:60:TYR:HE1	1:B:94:PHE:CE2	2.33	0.46
1:A:77:GLU:HB2	6:A:2084:HOH:O	2.16	0.46
1:B:16:ILE:N	1:B:194:ASP:OD2	2.49	0.46
1:B:209[A]:VAL:O	1:B:209[A]:VAL:HG13	2.16	0.46
2:L:91:LEU:HA	2:L:91:LEU:HD12	1.65	0.45
1:B:23:LYS:HG3	1:B:26:GLU:OE2	2.16	0.45
1:B:123:LEU:HD23	1:B:209[A]:VAL:CG1	2.47	0.45
1:B:94:PHE:CG	1:B:95:THR:N	2.84	0.45
1:A:29:TRP:HA	1:A:119:ALA:O	2.17	0.44

Continued on next page...

Continued from previous page...

Atom-1	Atom-2	Interatomic distance (Å)	Clash overlap (Å)
2:K:103:GLU:O	2:K:104:GLN:C	2.54	0.44
1:B:97:GLU:HG2	1:B:98:THR:HG23	1.99	0.44
1:A:67:ARG:NH1	1:A:70:ASP:OD2	2.50	0.44
1:A:77:GLU:HB3	6:A:2084:HOH:O	2.17	0.43
2:L:101:HIS:HD2	6:L:2016:HOH:O	1.99	0.43
1:A:215:TRP:CE2	3:A:1244:LZF:H21	2.54	0.43
1:A:93:ARG:CZ	6:A:2109:HOH:O	2.63	0.43
2:L:104:GLN:O	2:L:105:ASN:HB2	2.19	0.42
1:A:59:LEU:HD12	1:A:90:LYS:HD3	2.02	0.42
1:B:169:LYS:HG2	1:B:176:ILE:HB	2.01	0.42
1:A:178:GLN:OE1	1:A:230:LYS:NZ	2.53	0.42
1:B:29:TRP:HA	1:B:119:ALA:O	2.20	0.42
1:A:91:HIS:CE1	1:A:101:PHE:CD1	3.08	0.42
1:B:124(A):GLU:HB3	6:B:2106:HOH:O	2.20	0.42
1:A:147:GLU:HG3	3:A:1244:LZF:H342	2.02	0.41
1:B:165[B]:ARG:HH22	1:B:177:THR:C	2.23	0.41
2:L:115:TYR:CZ	2:L:131:PRO:HB2	2.55	0.41
1:B:143:ARG:HD3	1:B:149:GLY:O	2.21	0.41
2:K:102:GLU:HA	2:K:106:SER:O	2.21	0.41
1:B:195:SER:HB2	6:B:2026:HOH:O	2.21	0.41
1:B:122:CYS:SG	2:K:132:CYS:C	2.99	0.41
1:A:16:ILE:N	1:A:194:ASP:OD2	2.53	0.41
1:B:49:GLU:HB3	6:B:2037:HOH:O	2.20	0.41
1:B:165[B]:ARG:NH2	1:B:176:ILE:O	2.55	0.40
1:A:21:GLU:OE2	1:A:154:ARG:HG3	2.21	0.40
2:K:126:PRO:HG3	6:K:2022:HOH:O	2.22	0.40
1:A:92:ASN:ND2	1:A:92:ASN:C	2.73	0.40
1:B:145[A]:HIS:CE1	1:B:149:GLY:HA2	2.57	0.40
1:B:17:VAL:O	1:B:188:GLU:HA	2.22	0.40

All (2) symmetry-related close contacts are listed below. The label for Atom-2 includes the symmetry operator and encoded unit-cell translations to be applied.

Atom-1	Atom-2	Interatomic distance (Å)	Clash overlap (Å)
6:A:2084:HOH:O	6:B:2123:HOH:O[2_545]	2.13	0.07
6:B:2070:HOH:O	6:B:2180:HOH:O[2_645]	2.14	0.06

5.3 Torsion angles

5.3.1 Protein backbone

In the following table, the Percentiles column shows the percent Ramachandran outliers of the chain as a percentile score with respect to all X-ray entries followed by that with respect to entries of similar resolution.

The Analysed column shows the number of residues for which the backbone conformation was analysed, and the total number of residues.

Mol	Chain	Analysed	Favoured	Allowed	Outliers	Percentiles	
1	A	233/241 (97%)	220 (94%)	11 (5%)	2 (1%)	17	8
1	B	223/241 (92%)	213 (96%)	10 (4%)	0	100	100
2	K	52/55 (94%)	49 (94%)	2 (4%)	1 (2%)	8	2
2	L	51/55 (93%)	48 (94%)	3 (6%)	0	100	100
All	All	559/592 (94%)	530 (95%)	26 (5%)	3 (0%)	29	17

All (3) Ramachandran outliers are listed below:

Mol	Chain	Res	Type
2	K	138	GLU
1	A	61(A)	ALA
1	A	37	GLU

5.3.2 Protein sidechains

In the following table, the Percentiles column shows the percent sidechain outliers of the chain as a percentile score with respect to all X-ray entries followed by that with respect to entries of similar resolution.

The Analysed column shows the number of residues for which the sidechain conformation was analysed, and the total number of residues.

Mol	Chain	Analysed	Rotameric	Outliers	Percentiles	
1	A	200/204 (98%)	191 (96%)	9 (4%)	27	15
1	B	192/204 (94%)	186 (97%)	6 (3%)	40	28
2	K	45/47 (96%)	41 (91%)	4 (9%)	9	2
2	L	45/47 (96%)	42 (93%)	3 (7%)	16	5
All	All	482/502 (96%)	460 (95%)	22 (5%)	30	14

All (22) residues with a non-rotameric sidechain are listed below:

Mol	Chain	Res	Type
1	A	20	GLN
1	A	24	ASP
1	A	29	TRP
1	A	80	GLU
1	A	92	ASN
1	A	116	MET
1	A	124(A)	GLU
1	A	164	ASP
1	A	239	ASP
1	B	20	GLN
1	B	87	VAL
1	B	92[A]	ASN
1	B	173	SER
1	B	209[A]	VAL
1	B	209[B]	VAL
2	K	91	LEU
2	K	116	THR
2	K	137	LEU
2	K	138	GLU
2	L	91	LEU
2	L	116[A]	THR
2	L	116[B]	THR

Some sidechains can be flipped to improve hydrogen bonding and reduce clashes. All (6) such sidechains are listed below:

Mol	Chain	Res	Type
1	A	20	GLN
1	A	92	ASN
1	B	92[A]	ASN
1	B	145[A]	HIS
2	L	101	HIS
2	L	105	ASN

5.3.3 RNA [i](#)

There are no RNA molecules in this entry.

5.4 Non-standard residues in protein, DNA, RNA chains [i](#)

There are no non-standard protein/DNA/RNA residues in this entry.

5.5 Carbohydrates

There are no carbohydrates in this entry.

5.6 Ligand geometry

Of 5 ligands modelled in this entry, 3 are monoatomic - leaving 2 for Mogul analysis.

In the following table, the Counts columns list the number of bonds (or angles) for which Mogul statistics could be retrieved, the number of bonds (or angles) that are observed in the model and the number of bonds (or angles) that are defined in the Chemical Component Dictionary. The Link column lists molecule types, if any, to which the group is linked. The Z score for a bond length (or angle) is the number of standard deviations the observed value is removed from the expected value. A bond length (or angle) with $|Z| > 2$ is considered an outlier worth inspection. RMSZ is the root-mean-square of all Z scores of the bond lengths (or angles).

Mol	Type	Chain	Res	Link	Bond lengths			Bond angles		
					Counts	RMSZ	$\# Z > 2$	Counts	RMSZ	$\# Z > 2$
3	LZF	B	1244	-	33,37,37	1.22	4 (12%)	35,52,52	2.06	9 (25%)
3	LZF	A	1244	-	33,37,37	1.15	3 (9%)	35,52,52	1.83	9 (25%)

In the following table, the Chirals column lists the number of chiral outliers, the number of chiral centers analysed, the number of these observed in the model and the number defined in the Chemical Component Dictionary. Similar counts are reported in the Torsion and Rings columns. '-' means no outliers of that kind were identified.

Mol	Type	Chain	Res	Link	Chirals	Torsions	Rings
3	LZF	B	1244	-	-	1/20/34/34	0/4/4/4
3	LZF	A	1244	-	-	3/20/34/34	0/4/4/4

All (7) bond length outliers are listed below:

Mol	Chain	Res	Type	Atoms	Z	Observed(Å)	Ideal(Å)
3	A	1244	LZF	C21-N1	3.58	1.41	1.36
3	B	1244	LZF	C21-N1	3.45	1.41	1.36
3	B	1244	LZF	C16-N15	-3.35	1.35	1.41
3	B	1244	LZF	C9-N1	-3.34	1.40	1.44
3	A	1244	LZF	C16-N15	-2.77	1.36	1.41
3	B	1244	LZF	C8-N1	2.40	1.42	1.37
3	A	1244	LZF	C9-N1	-2.09	1.41	1.44

All (18) bond angle outliers are listed below:

Mol	Chain	Res	Type	Atoms	Z	Observed(°)	Ideal(°)
3	B	1244	LZF	C18-C6-N7	-4.95	104.80	113.63
3	B	1244	LZF	C11-C17-C16	-4.50	119.21	123.50
3	A	1244	LZF	C2-C5-N7	3.98	122.59	115.21
3	B	1244	LZF	C22-N4-C18	-3.70	107.03	113.28
3	B	1244	LZF	F32-C17-C16	3.67	122.11	117.50
3	A	1244	LZF	C13-C6-N7	-3.50	104.72	111.94
3	B	1244	LZF	C28-C16-C17	3.47	120.67	117.17
3	A	1244	LZF	C22-C14-N15	3.33	120.38	114.12
3	A	1244	LZF	F32-C17-C16	3.18	121.49	117.50
3	B	1244	LZF	C16-N15-C14	-3.04	115.89	126.57
3	B	1244	LZF	C18-N4-C20	2.81	108.37	104.19
3	A	1244	LZF	C26-C9-C11	-2.50	118.78	121.74
3	A	1244	LZF	C18-N4-C20	2.48	107.89	104.19
3	A	1244	LZF	C18-C6-N7	-2.48	109.20	113.63
3	B	1244	LZF	C14-C22-N4	-2.46	107.65	113.36
3	B	1244	LZF	C30-C23-C8	2.31	121.16	118.14
3	A	1244	LZF	C16-N15-C14	-2.26	118.61	126.57
3	A	1244	LZF	C26-C9-N1	2.26	122.14	119.41

There are no chirality outliers.

All (4) torsion outliers are listed below:

Mol	Chain	Res	Type	Atoms
3	A	1244	LZF	C17-C16-N15-C14
3	B	1244	LZF	C17-C16-N15-C14
3	A	1244	LZF	C28-C16-N15-C14
3	A	1244	LZF	C20-C13-O33-C34

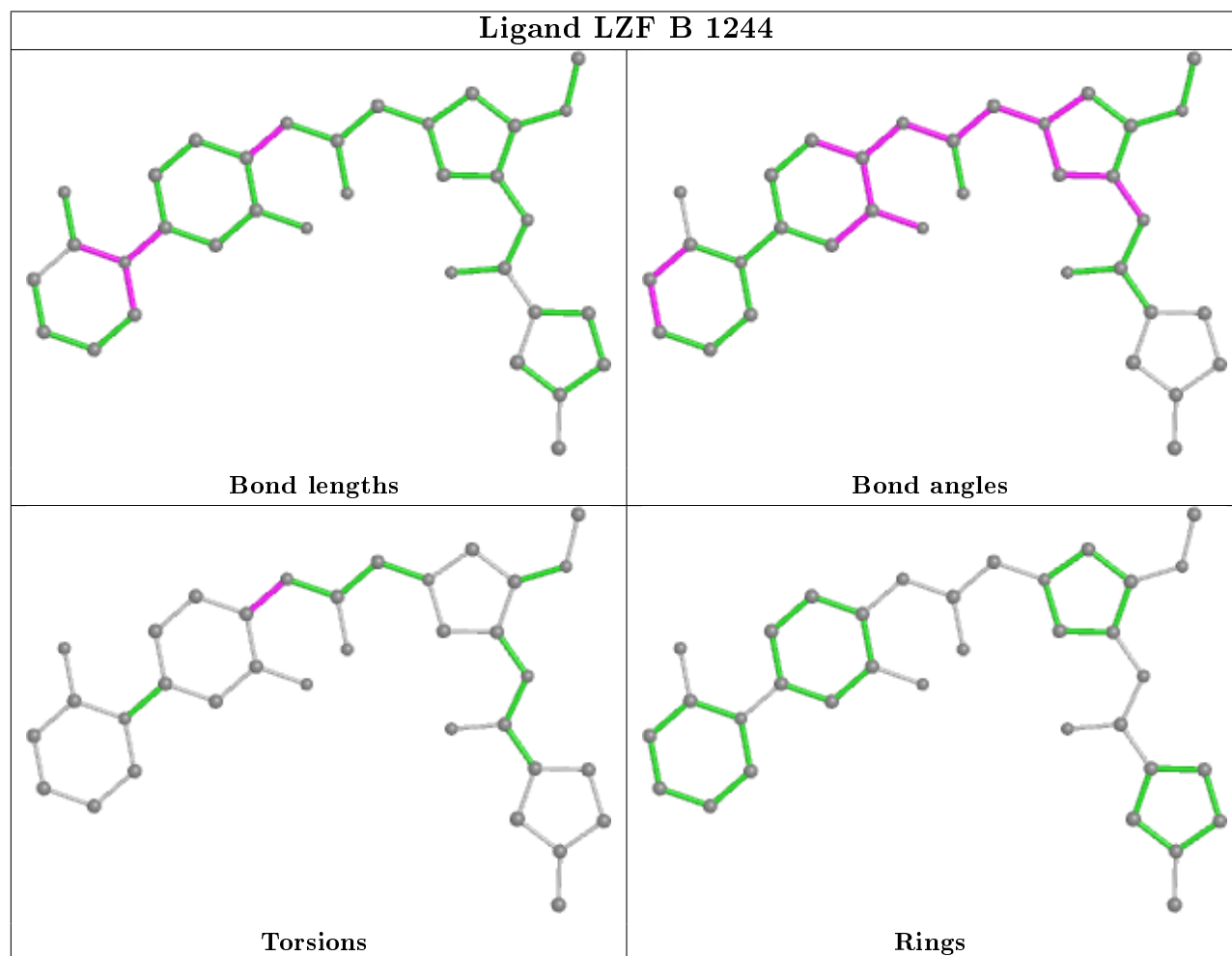
There are no ring outliers.

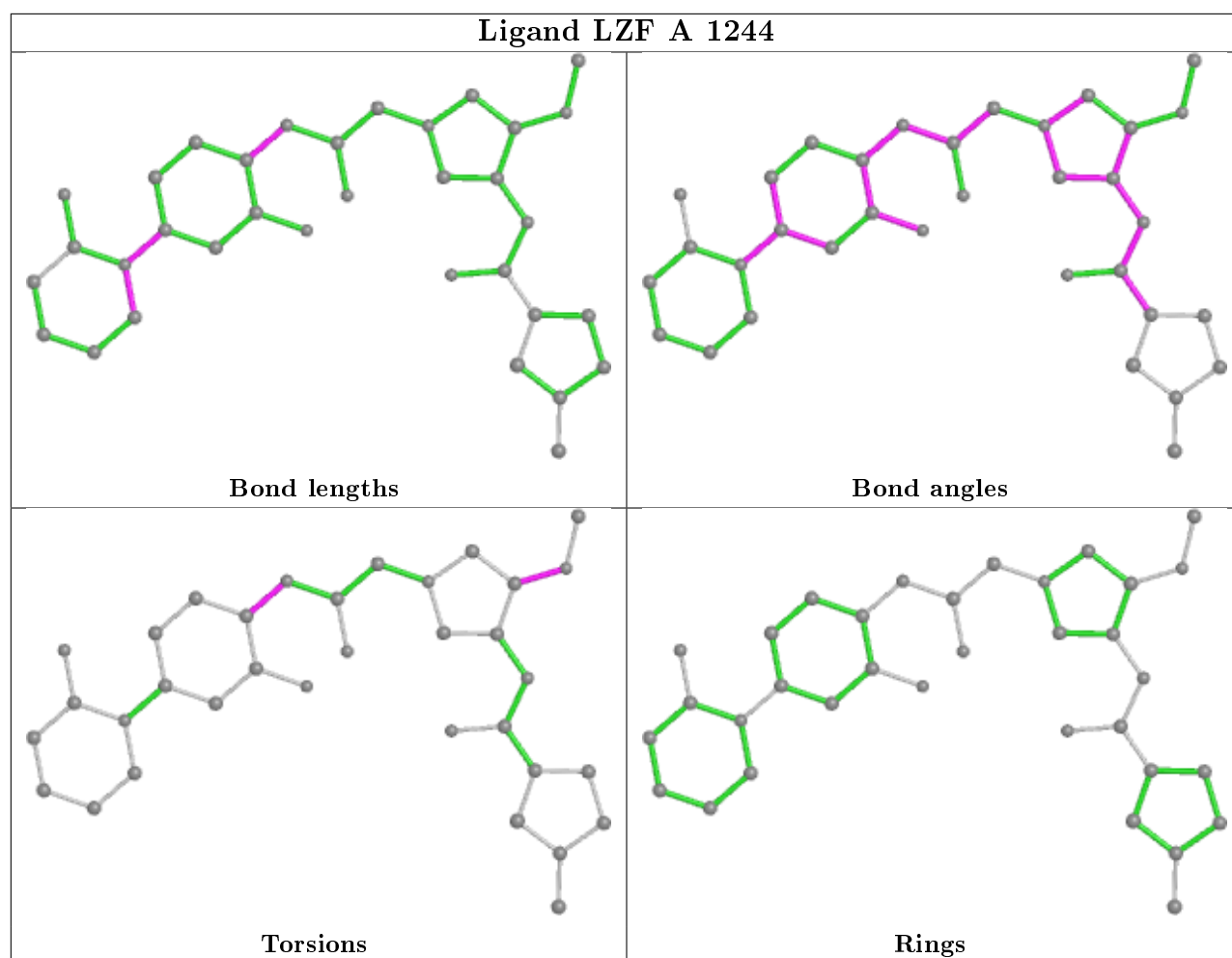
2 monomers are involved in 4 short contacts:

Mol	Chain	Res	Type	Clashes	Symm-Clashes
3	B	1244	LZF	2	0
3	A	1244	LZF	2	0

The following is a two-dimensional graphical depiction of Mogul quality analysis of bond lengths, bond angles, torsion angles, and ring geometry for all instances of the Ligand of Interest. In addition, ligands with molecular weight > 250 and outliers as shown on the validation Tables will also be included. For torsion angles, if less than 5% of the Mogul distribution of torsion angles is within 10 degrees of the torsion angle in question, then that torsion angle is considered an outlier. Any bond that is central to one or more torsion angles identified as an outlier by Mogul will be highlighted in the graph. For rings, the root-mean-square deviation (RMSD) between the ring in question and similar rings identified by Mogul is calculated over all ring torsion angles. If the

average RMSD is greater than 60 degrees and the minimal RMSD between the ring in question and any Mogul-identified rings is also greater than 60 degrees, then that ring is considered an outlier. The outliers are highlighted in purple. The color gray indicates Mogul did not find sufficient equivalents in the CSD to analyse the geometry.





5.7 Other polymers [i](#)

There are no such residues in this entry.

5.8 Polymer linkage issues [i](#)

There are no chain breaks in this entry.

6 Fit of model and data ⓘ

6.1 Protein, DNA and RNA chains ⓘ

In the following table, the column labelled ‘#RSRZ> 2’ contains the number (and percentage) of RSRZ outliers, followed by percent RSRZ outliers for the chain as percentile scores relative to all X-ray entries and entries of similar resolution. The OWAB column contains the minimum, median, 95th percentile and maximum values of the occupancy-weighted average B-factor per residue. The column labelled ‘Q< 0.9’ lists the number of (and percentage) of residues with an average occupancy less than 0.9.

Mol	Chain	Analysed	<RSRZ>	#RSRZ>2	OWAB(Å ²)	Q<0.9
1	A	233/241 (96%)	0.22	6 (2%) 56 65	2, 4, 17, 29	19 (8%)
1	B	225/241 (93%)	0.25	7 (3%) 49 58	2, 5, 12, 20	19 (8%)
2	K	54/55 (98%)	0.15	1 (1%) 66 74	2, 5, 13, 15	3 (5%)
2	L	52/55 (94%)	0.23	1 (1%) 66 74	3, 5, 13, 16	4 (7%)
All	All	564/592 (95%)	0.23	15 (2%) 54 63	2, 5, 14, 29	45 (7%)

All (15) RSRZ outliers are listed below:

Mol	Chain	Res	Type	RSRZ
1	A	78	GLY	3.9
1	A	74	GLU	3.6
1	B	78	GLY	3.2
1	A	36	GLU	3.1
1	A	76	GLU	3.0
2	L	105	ASN	2.9
1	B	243	LYS	2.6
2	K	139	ARG	2.6
1	B	79	GLY	2.5
1	B	170	LEU	2.4
1	B	60	TYR	2.4
1	B	62	LYS	2.4
1	B	61	GLN	2.3
1	A	75	GLN	2.2
1	A	77	GLU	2.2

6.2 Non-standard residues in protein, DNA, RNA chains ⓘ

There are no non-standard protein/DNA/RNA residues in this entry.

6.3 Carbohydrates [i](#)

There are no carbohydrates in this entry.

6.4 Ligands [i](#)

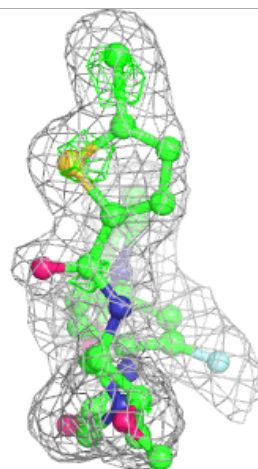
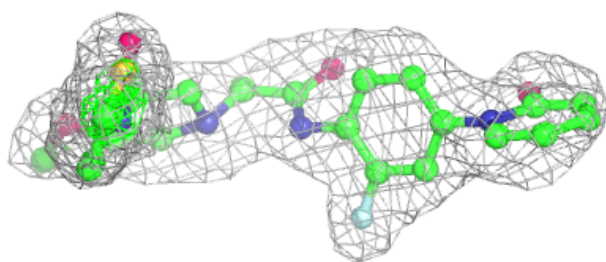
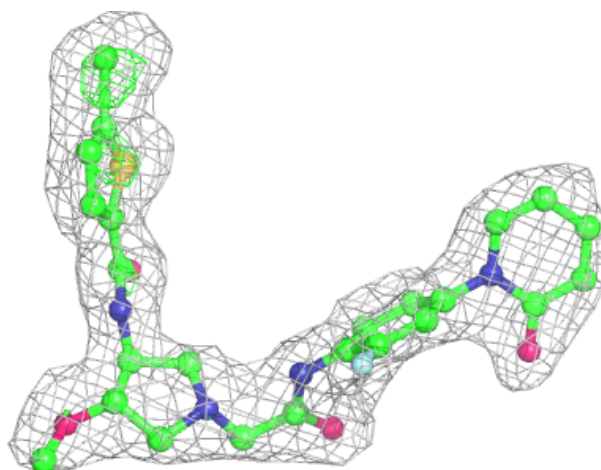
In the following table, the Atoms column lists the number of modelled atoms in the group and the number defined in the chemical component dictionary. The B-factors column lists the minimum, median, 95th percentile and maximum values of B factors of atoms in the group. The column labelled 'Q< 0.9' lists the number of atoms with occupancy less than 0.9.

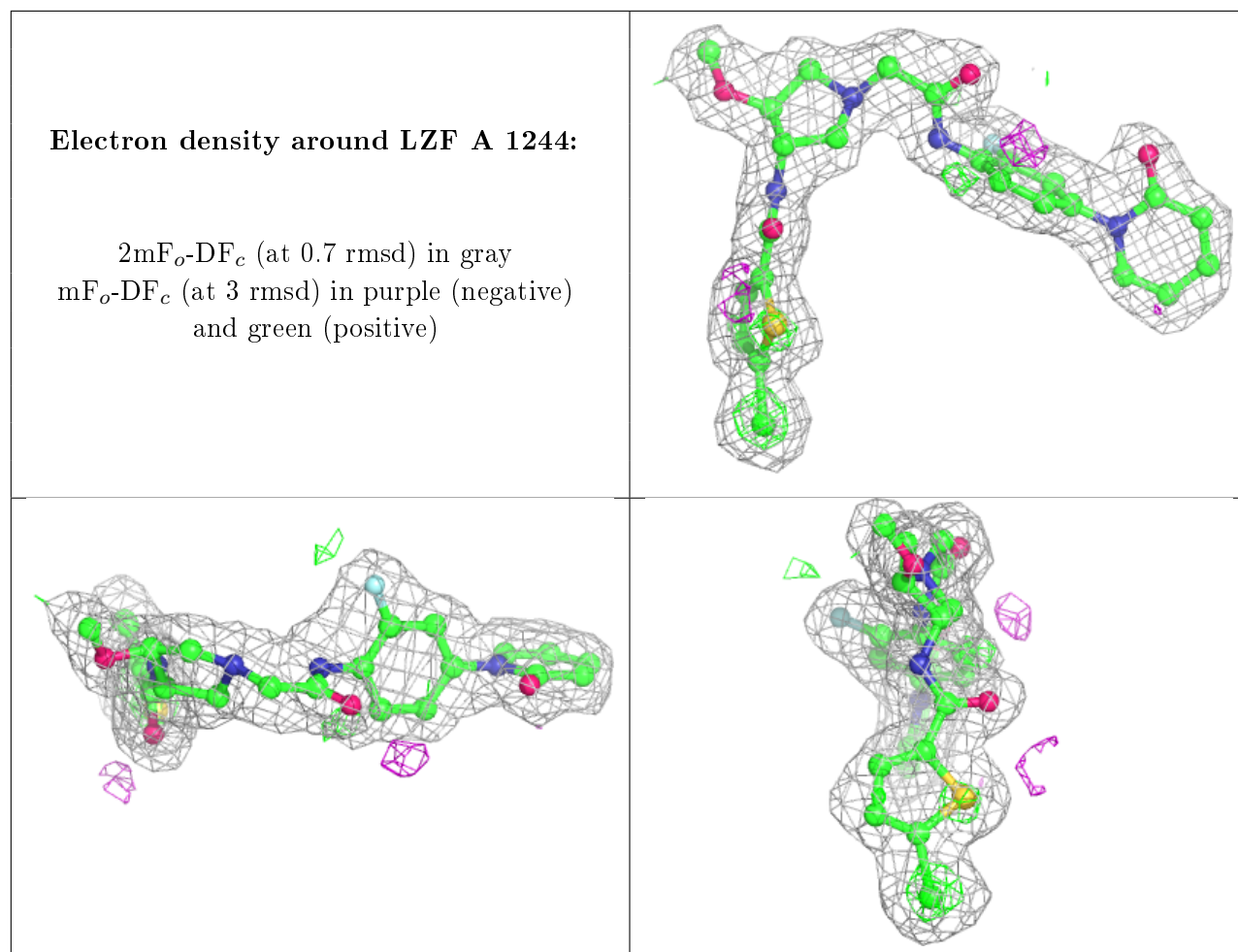
Mol	Type	Chain	Res	Atoms	RSCC	RSR	B-factors(\AA^2)	Q<0.9
3	LZF	B	1244	34/34	0.89	0.18	2,6,7,9	0
4	CA	A	1245	1/1	0.92	0.12	35,35,35,35	0
3	LZF	A	1244	34/34	0.92	0.13	2,6,9,11	0
5	NA	B	1245	1/1	0.98	0.05	10,10,10,10	0
5	NA	A	1246	1/1	0.99	0.03	3,3,3,3	0

The following is a graphical depiction of the model fit to experimental electron density of all instances of the Ligand of Interest. In addition, ligands with molecular weight > 250 and outliers as shown on the geometry validation Tables will also be included. Each fit is shown from different orientation to approximate a three-dimensional view.

Electron density around LZ F B 1244:

$2mF_o-DF_c$ (at 0.7 rmsd) in gray
 mF_o-DF_c (at 3 rmsd) in purple (negative)
and green (positive)





6.5 Other polymers ⓘ

There are no such residues in this entry.