



# Full wwPDB X-ray Structure Validation Report ⓘ

Aug 27, 2020 – 02:11 PM BST

PDB ID : 6VV9  
Title : Mycobacterium tuberculosis dihydrofolate reductase in complex with JEB300  
Authors : Ribeiro, J.A.; Chavez-Pacheco, S.M.; Dias, M.V.B.  
Deposited on : 2020-02-17  
Resolution : 2.18 Å(reported)

This is a Full wwPDB X-ray Structure Validation Report for a publicly released PDB entry.

We welcome your comments at [validation@mail.wwpdb.org](mailto:validation@mail.wwpdb.org)

A user guide is available at

<https://www.wwpdb.org/validation/2017/XrayValidationReportHelp>

with specific help available everywhere you see the ⓘ symbol.

---

The following versions of software and data (see [references ⓘ](#)) were used in the production of this report:

MolProbity : 4.02b-467  
Mogul : 1.8.5 (274361), CSD as541be (2020)  
Xtriage (Phenix) : 1.13  
EDS : 2.13  
buster-report : 1.1.7 (2018)  
Percentile statistics : 20191225.v01 (using entries in the PDB archive December 25th 2019)  
Refmac : 5.8.0158  
CCP4 : 7.0.044 (Gargrove)  
Ideal geometry (proteins) : Engh & Huber (2001)  
Ideal geometry (DNA, RNA) : Parkinson et al. (1996)  
Validation Pipeline (wwPDB-VP) : 2.13

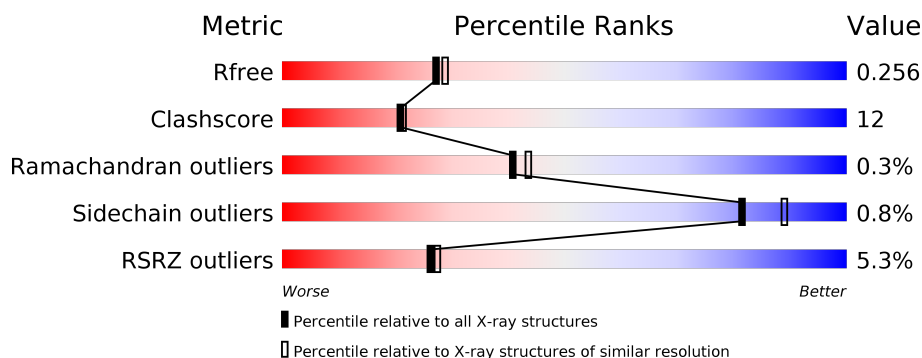
# 1 Overall quality at a glance

The following experimental techniques were used to determine the structure:

*X-RAY DIFFRACTION*

The reported resolution of this entry is 2.18 Å.

Percentile scores (ranging between 0-100) for global validation metrics of the entry are shown in the following graphic. The table shows the number of entries on which the scores are based.



Metric	Whole archive (#Entries)	Similar resolution (#Entries, resolution range(Å))
$R_{free}$	130704	6864 (2.20-2.16)
Clashscore	141614	7689 (2.20-2.16)
Ramachandran outliers	138981	7564 (2.20-2.16)
Sidechain outliers	138945	7564 (2.20-2.16)
RSRZ outliers	127900	6738 (2.20-2.16)

The table below summarises the geometric issues observed across the polymeric chains and their fit to the electron density. The red, orange, yellow and green segments on the lower bar indicate the fraction of residues that contain outliers for  $\geq 3$ , 2, 1 and 0 types of geometric quality criteria respectively. A grey segment represents the fraction of residues that are not modelled. The numeric value for each fraction is indicated below the corresponding segment, with a dot representing fractions  $\leq 5\%$ . The upper red bar (where present) indicates the fraction of residues that have poor fit to the electron density. The numeric value is given above the bar.

Mol	Chain	Length	Quality of chain
1	A	161	<div> <div>4%</div> <div> <div></div> <div>75%</div> <div>24%</div> <div>.</div> </div> </div>
1	B	161	<div> <div>7%</div> <div> <div></div> <div>80%</div> <div>19%</div> <div>..</div> </div> </div>

The following table lists non-polymeric compounds, carbohydrate monomers and non-standard residues in protein, DNA, RNA chains that are outliers for geometric or electron-density-fit criteria:

Mol	Type	Chain	Res	Chirality	Geometry	Clashes	Electron density
3	RQ1	B	304	-	-	-	X
4	PO4	A	204	-	-	X	X

## 2 Entry composition i

There are 6 unique types of molecules in this entry. The entry contains 2750 atoms, of which 0 are hydrogens and 0 are deuteriums.

In the tables below, the ZeroOcc column contains the number of atoms modelled with zero occupancy, the AltConf column contains the number of residues with at least one atom in alternate conformation and the Trace column contains the number of residues modelled with at most 2 atoms.

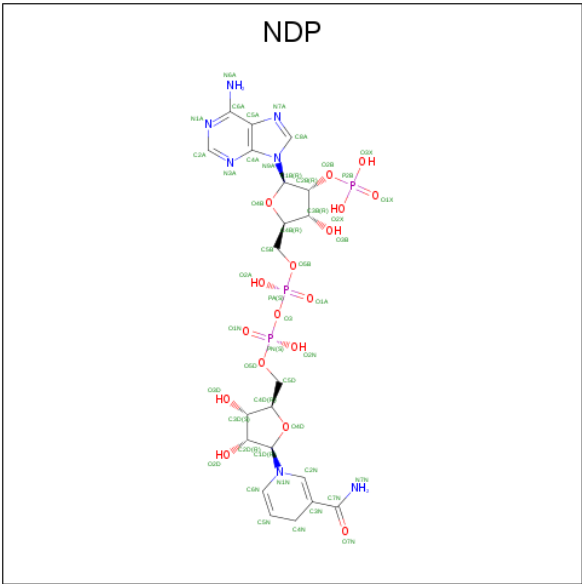
- Molecule 1 is a protein called Dihydrofolate reductase.

Mol	Chain	Residues	Atoms					ZeroOcc	AltConf	Trace
1	A	159	Total	C	N	O	S	0	0	0
			1244	783	228	228	5			
1	B	159	Total	C	N	O	S	0	0	0
			1240	781	228	226	5			

There are 4 discrepancies between the modelled and reference sequences:

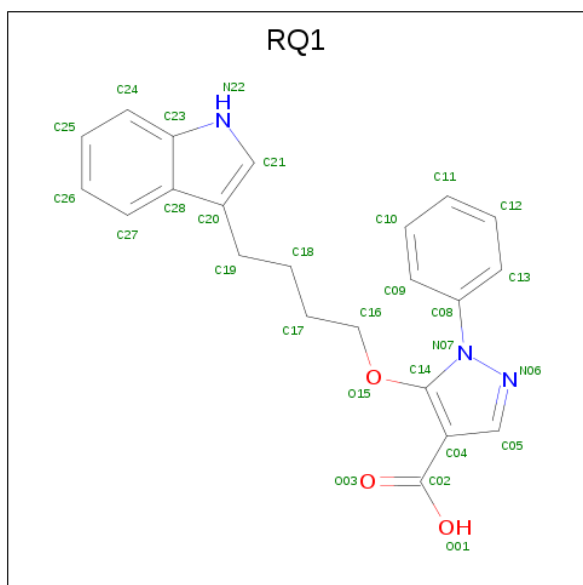
Chain	Residue	Modelled	Actual	Comment	Reference
A	-1	MET	-	initiating methionine	UNP A5U6B6
A	0	THR	-	expression tag	UNP A5U6B6
B	-1	MET	-	initiating methionine	UNP A5U6B6
B	0	THR	-	expression tag	UNP A5U6B6

- Molecule 2 is NADPH DIHYDRO-NICOTINAMIDE-ADENINE-DINUCLEOTIDE PHOSPHATE (three-letter code: NDP) (formula: C<sub>21</sub>H<sub>30</sub>N<sub>7</sub>O<sub>17</sub>P<sub>3</sub>).



Mol	Chain	Residues	Atoms					ZeroOcc	AltConf
2	A	1	Total	C	N	O	P	0	0
			48	21	7	17	3		
2	B	1	Total	C	N	O	P	0	0
			48	21	7	17	3		

- Molecule 3 is 5-[4-(1H-indol-3-yl)butoxy]-1-phenyl-1H-pyrazole-4-carboxylic acid (three-letter code: RQ1) (formula: C<sub>22</sub>H<sub>21</sub>N<sub>3</sub>O<sub>3</sub>) (labeled as "Ligand of Interest" by author).



Mol	Chain	Residues	Atoms				ZeroOcc	AltConf
3	A	1	Total	C	N	O	0	0
			28	22	3	3		
3	B	1	Total	C	N	O	0	0
			28	22	3	3		

- Molecule 4 is PHOSPHATE ION (three-letter code: PO4) (formula: O<sub>4</sub>P).



Mol	Chain	Residues	Atoms			ZeroOcc	AltConf
4	A	1	Total	O	P	0	0
			5	4	1		
4	A	1	Total	O	P	0	0
			5	4	1		
4	B	1	Total	O	P	0	0
			5	4	1		
4	B	1	Total	O	P	0	0
			5	4	1		
4	B	1	Total	O	P	0	0
			5	4	1		

- Molecule 5 is COBALT (II) ION (three-letter code: CO) (formula: Co).

Mol	Chain	Residues	Atoms		ZeroOcc	AltConf
5	B	2	Total	Co	0	0
			2	2		

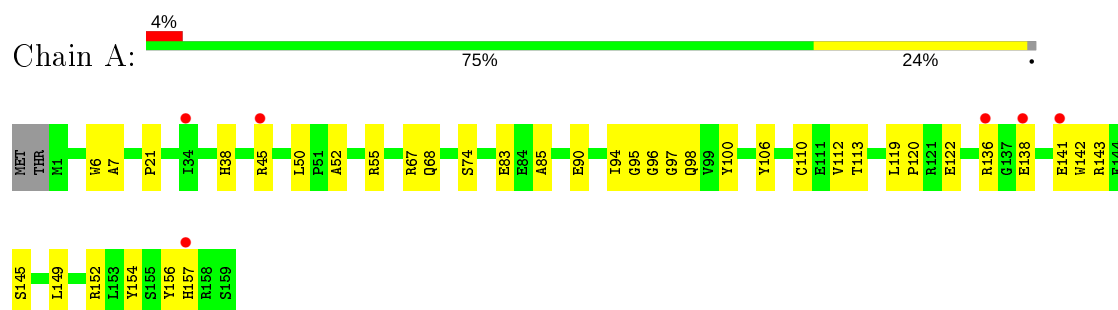
- Molecule 6 is water.

Mol	Chain	Residues	Atoms		ZeroOcc	AltConf
6	A	51	Total	O	0	0
			51	51		
6	B	36	Total	O	0	0
			36	36		

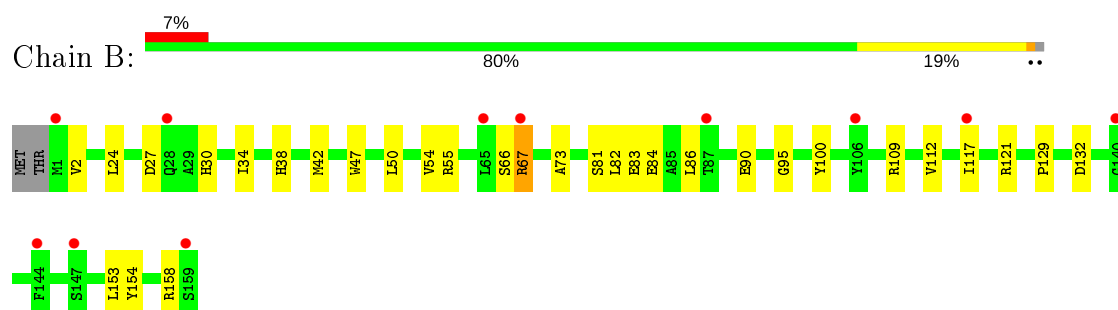
### 3 Residue-property plots [i](#)

These plots are drawn for all protein, RNA, DNA and oligosaccharide chains in the entry. The first graphic for a chain summarises the proportions of the various outlier classes displayed in the second graphic. The second graphic shows the sequence view annotated by issues in geometry and electron density. Residues are color-coded according to the number of geometric quality criteria for which they contain at least one outlier: green = 0, yellow = 1, orange = 2 and red = 3 or more. A red dot above a residue indicates a poor fit to the electron density ( $RSRZ > 2$ ). Stretches of 2 or more consecutive residues without any outlier are shown as a green connector. Residues present in the sample, but not in the model, are shown in grey.

- Molecule 1: Dihydrofolate reductase



- Molecule 1: Dihydrofolate reductase



## 4 Data and refinement statistics

Property	Value	Source
Space group	P 21 21 21	Depositor
Cell constants a, b, c, $\alpha$ , $\beta$ , $\gamma$	61.18Å 70.87Å 72.08Å 90.00° 90.00° 90.00°	Depositor
Resolution (Å)	38.96 – 2.18 38.96 – 2.18	Depositor EDS
% Data completeness (in resolution range)	99.8 (38.96-2.18) 95.0 (38.96-2.18)	Depositor EDS
$R_{merge}$	0.14	Depositor
$R_{sym}$	(Not available)	Depositor
$\langle I/\sigma(I) \rangle$ <sup>1</sup>	2.10 (at 2.18Å)	Xtriage
Refinement program	PHENIX 1.14	Depositor
R, $R_{free}$	0.208 , 0.247 0.217 , 0.256	Depositor DCC
$R_{free}$ test set	822 reflections (4.87%)	wwPDB-VP
Wilson B-factor (Å <sup>2</sup> )	36.2	Xtriage
Anisotropy	0.155	Xtriage
Bulk solvent $k_{sol}$ (e/Å <sup>3</sup> ), $B_{sol}$ (Å <sup>2</sup> )	0.33 , 38.0	EDS
L-test for twinning <sup>2</sup>	$\langle  L  \rangle = 0.45$ , $\langle L^2 \rangle = 0.28$	Xtriage
Estimated twinning fraction	0.238 for -h,l,k	Xtriage
Reported twinning fraction	0.220 for -h,l,k	Depositor
Outliers	0 of 16870 reflections	Xtriage
$F_o, F_c$ correlation	0.94	EDS
Total number of atoms	2750	wwPDB-VP
Average B, all atoms (Å <sup>2</sup> )	41.0	wwPDB-VP

Xtriage's analysis on translational NCS is as follows: *The largest off-origin peak in the Patterson function is 6.37% of the height of the origin peak. No significant pseudotranslation is detected.*

<sup>1</sup> Intensities estimated from amplitudes.

<sup>2</sup> Theoretical values of  $\langle |L| \rangle$ ,  $\langle L^2 \rangle$  for acentric reflections are 0.5, 0.333 respectively for untwinned datasets, and 0.375, 0.2 for perfectly twinned datasets.



## 5 Model quality [i](#)

### 5.1 Standard geometry [i](#)

Bond lengths and bond angles in the following residue types are not validated in this section: NDP, PO4, CO, RQ1

The Z score for a bond length (or angle) is the number of standard deviations the observed value is removed from the expected value. A bond length (or angle) with  $|Z| > 5$  is considered an outlier worth inspection. RMSZ is the root-mean-square of all Z scores of the bond lengths (or angles).

Mol	Chain	Bond lengths		Bond angles	
		RMSZ	$\# Z  > 5$	RMSZ	$\# Z  > 5$
1	A	0.44	0/1275	0.62	0/1732
1	B	0.46	0/1271	0.63	2/1727 (0.1%)
All	All	0.45	0/2546	0.62	2/3459 (0.1%)

There are no bond length outliers.

All (2) bond angle outliers are listed below:

Mol	Chain	Res	Type	Atoms	Z	Observed(°)	Ideal(°)
1	B	67	ARG	CG-CD-NE	-6.42	98.32	111.80
1	B	67	ARG	NE-CZ-NH1	-5.33	117.63	120.30

There are no chirality outliers.

There are no planarity outliers.

### 5.2 Too-close contacts [i](#)

In the following table, the Non-H and H(model) columns list the number of non-hydrogen atoms and hydrogen atoms in the chain respectively. The H(added) column lists the number of hydrogen atoms added and optimized by MolProbity. The Clashes column lists the number of clashes within the asymmetric unit, whereas Symm-Clashes lists symmetry related clashes.

Mol	Chain	Non-H	H(model)	H(added)	Clashes	Symm-Clashes
1	A	1244	0	1223	41	1
1	B	1240	0	1219	21	1
2	A	48	0	25	14	0
2	B	48	0	24	3	0
3	A	28	0	0	0	0
3	B	28	0	0	0	0
4	A	10	0	0	4	0

*Continued on next page...*

*Continued from previous page...*

Mol	Chain	Non-H	H(model)	H(added)	Clashes	Symm-Clashes
4	B	15	0	0	0	0
5	B	2	0	0	0	0
6	A	51	0	0	6	0
6	B	36	0	0	5	1
All	All	2750	0	2491	63	2

The all-atom clashscore is defined as the number of clashes found per 1000 atoms (including hydrogen atoms). The all-atom clashscore for this structure is 12.

All (63) close contacts within the same asymmetric unit are listed below, sorted by their clash magnitude.

Atom-1	Atom-2	Interatomic distance (Å)	Clash overlap (Å)
1:A:45:ARG:HH22	1:A:98:GLN:NE2	1.19	1.37
1:B:67:ARG:HG2	2:B:302:NDP:O2X	1.39	1.20
1:A:45:ARG:NH2	1:A:98:GLN:NE2	2.02	1.07
1:A:45:ARG:HH22	1:A:98:GLN:CD	1.65	0.98
1:A:45:ARG:NH2	1:A:98:GLN:CD	2.25	0.87
4:A:204:PO4:O3	6:A:301:HOH:O	1.94	0.86
1:A:45:ARG:HD3	2:A:201:NDP:O3	1.76	0.85
1:B:2:VAL:O	6:B:401:HOH:O	1.98	0.80
1:A:96:GLY:HA3	2:A:201:NDP:H52N	1.64	0.78
1:A:45:ARG:HD2	2:A:201:NDP:C5B	2.15	0.76
1:A:45:ARG:CD	2:A:201:NDP:H51A	2.15	0.76
1:A:95:GLY:HA3	2:A:201:NDP:H5N	1.69	0.73
1:A:52:ALA:O	6:A:303:HOH:O	2.08	0.72
1:A:68:GLN:OE1	6:A:302:HOH:O	2.08	0.71
1:A:45:ARG:HD2	2:A:201:NDP:H51A	1.72	0.71
1:B:117:ILE:O	6:B:402:HOH:O	2.08	0.70
1:A:67:ARG:NE	4:A:204:PO4:O2	2.23	0.70
1:B:109:ARG:N	6:B:401:HOH:O	2.19	0.70
1:B:66:SER:O	6:B:404:HOH:O	2.14	0.65
1:A:120:PRO:O	6:A:304:HOH:O	2.14	0.65
2:B:302:NDP:O3X	2:B:302:NDP:O3B	2.17	0.62
1:A:85:ALA:O	6:A:305:HOH:O	2.16	0.61
1:B:83:GLU:OE2	1:B:83:GLU:N	2.26	0.59
1:A:83:GLU:OE2	1:A:106:TYR:OH	2.17	0.57
1:A:96:GLY:HA3	2:A:201:NDP:C5D	2.36	0.54
1:B:67:ARG:CG	2:B:302:NDP:O2X	2.33	0.54
1:A:98:GLN:OE1	2:A:201:NDP:H8A	2.09	0.53
1:A:45:ARG:NH2	2:A:201:NDP:H51A	2.25	0.51
1:A:142:TRP:CE2	1:A:152:ARG:HD3	2.47	0.50

*Continued on next page...*

*Continued from previous page...*

Atom-1	Atom-2	Interatomic distance (Å)	Clash overlap (Å)
1:A:45:ARG:HH21	2:A:201:NDP:H51A	1.79	0.48
1:B:158:ARG:NH1	6:B:403:HOH:O	2.09	0.48
1:A:45:ARG:CD	2:A:201:NDP:C5B	2.83	0.47
1:A:142:TRP:CD2	1:A:152:ARG:HD3	2.49	0.47
1:A:110:CYS:HB2	1:A:156:TYR:HB2	1.95	0.47
1:A:50:LEU:O	1:A:55:ARG:HD3	2.15	0.47
1:B:38:HIS:CG	1:B:90:GLU:HG2	2.50	0.47
1:A:138:GLU:HG2	1:B:153:LEU:HD22	1.96	0.46
1:B:100:TYR:HB3	1:B:129:PRO:CG	2.46	0.46
1:B:67:ARG:HG3	1:B:67:ARG:NH2	2.30	0.45
1:B:47:TRP:CE2	1:B:73:ALA:HB1	2.50	0.45
1:A:38:HIS:HB3	1:A:90:GLU:O	2.17	0.45
1:A:67:ARG:NH2	4:A:204:PO4:O2	2.49	0.45
1:B:81:SER:OG	1:B:84:GLU:OE2	2.25	0.44
1:A:6:TRP:HB3	1:A:100:TYR:CZ	2.52	0.44
1:B:42:MET:HA	1:B:95:GLY:O	2.17	0.44
1:A:112:VAL:HB	1:A:154:TYR:HB2	2.00	0.44
1:A:143:ARG:NH2	6:A:309:HOH:O	2.50	0.43
1:A:145:SER:HB3	1:A:149:LEU:O	2.18	0.43
1:B:112:VAL:HB	1:B:154:TYR:HB2	2.01	0.43
1:A:119:LEU:HA	1:A:119:LEU:HD12	1.76	0.43
1:B:30:HIS:O	1:B:34:ILE:HG13	2.18	0.43
1:A:21:PRO:HG2	1:A:119:LEU:HD21	2.02	0.42
1:B:24:LEU:HD23	1:B:27:ASP:HB2	2.01	0.42
1:A:67:ARG:CZ	4:A:204:PO4:O2	2.68	0.42
1:A:45:ARG:HH12	1:A:98:GLN:HE22	1.68	0.41
1:A:97:GLY:N	2:A:201:NDP:O2N	2.53	0.41
1:B:50:LEU:O	1:B:55:ARG:HD3	2.19	0.41
1:A:136:ARG:O	1:A:157:HIS:N	2.45	0.41
1:B:82:LEU:O	1:B:86:LEU:HG	2.21	0.41
1:A:7:ALA:HA	1:A:113:THR:O	2.21	0.41
1:A:94:ILE:O	2:A:201:NDP:H5N	2.21	0.40
1:A:45:ARG:HD2	2:A:201:NDP:C4B	2.51	0.40
1:B:54:VAL:O	1:B:54:VAL:HG12	2.21	0.40

All (2) symmetry-related close contacts are listed below. The label for Atom-2 includes the symmetry operator and encoded unit-cell translations to be applied.

Atom-1	Atom-2	Interatomic distance (Å)	Clash overlap (Å)
6:B:435:HOH:O	6:B:436:HOH:O[2_655]	2.05	0.15
1:A:122:GLU:OE1	1:B:121:ARG:NE[1_455]	2.06	0.14

## 5.3 Torsion angles [i](#)

### 5.3.1 Protein backbone [i](#)

In the following table, the Percentiles column shows the percent Ramachandran outliers of the chain as a percentile score with respect to all X-ray entries followed by that with respect to entries of similar resolution.

The Analysed column shows the number of residues for which the backbone conformation was analysed, and the total number of residues.

Mol	Chain	Analysed	Favoured	Allowed	Outliers	Percentiles	
1	A	157/161 (98%)	151 (96%)	6 (4%)	0	100	100
1	B	157/161 (98%)	154 (98%)	2 (1%)	1 (1%)	25	24
All	All	314/322 (98%)	305 (97%)	8 (2%)	1 (0%)	41	43

All (1) Ramachandran outliers are listed below:

Mol	Chain	Res	Type
1	B	132	ASP

### 5.3.2 Protein sidechains [i](#)

In the following table, the Percentiles column shows the percent sidechain outliers of the chain as a percentile score with respect to all X-ray entries followed by that with respect to entries of similar resolution.

The Analysed column shows the number of residues for which the sidechain conformation was analysed, and the total number of residues.

Mol	Chain	Analysed	Rotameric	Outliers	Percentiles	
1	A	127/129 (98%)	125 (98%)	2 (2%)	62	74
1	B	126/129 (98%)	126 (100%)	0	100	100
All	All	253/258 (98%)	251 (99%)	2 (1%)	81	89

All (2) residues with a non-rotameric sidechain are listed below:

Mol	Chain	Res	Type
1	A	74	SER
1	A	141	GLU

Some sidechains can be flipped to improve hydrogen bonding and reduce clashes. All (1) such sidechains are listed below:

Mol	Chain	Res	Type
1	A	98	GLN

### 5.3.3 RNA ⓘ

There are no RNA molecules in this entry.

### 5.4 Non-standard residues in protein, DNA, RNA chains ⓘ

There are no non-standard protein/DNA/RNA residues in this entry.

### 5.5 Carbohydrates ⓘ

There are no monosaccharides in this entry.

### 5.6 Ligand geometry ⓘ

Of 11 ligands modelled in this entry, 2 are monoatomic - leaving 9 for Mogul analysis.

In the following table, the Counts columns list the number of bonds (or angles) for which Mogul statistics could be retrieved, the number of bonds (or angles) that are observed in the model and the number of bonds (or angles) that are defined in the Chemical Component Dictionary. The Link column lists molecule types, if any, to which the group is linked. The Z score for a bond length (or angle) is the number of standard deviations the observed value is removed from the expected value. A bond length (or angle) with  $|Z| > 2$  is considered an outlier worth inspection. RMSZ is the root-mean-square of all Z scores of the bond lengths (or angles).

Mol	Type	Chain	Res	Link	Bond lengths			Bond angles		
					Counts	RMSZ	# $ Z  > 2$	Counts	RMSZ	# $ Z  > 2$
4	PO4	A	204	-	4,4,4	1.53	0	6,6,6	1.62	2 (33%)
4	PO4	B	305	-	4,4,4	0.90	0	6,6,6	0.38	0
2	NDP	B	302	-	45,52,52	3.96	20 (44%)	53,80,80	2.23	6 (11%)
3	RQ1	B	304	-	25,31,31	1.90	3 (12%)	24,42,42	1.41	2 (8%)
4	PO4	B	306	-	4,4,4	0.85	0	6,6,6	0.42	0
4	PO4	B	307	-	4,4,4	0.91	0	6,6,6	0.49	0
2	NDP	A	201	-	45,52,52	3.64	18 (40%)	53,80,80	2.25	9 (16%)
4	PO4	A	203	-	4,4,4	0.82	0	6,6,6	0.48	0
3	RQ1	A	202	-	25,31,31	2.03	4 (16%)	24,42,42	1.27	1 (4%)

In the following table, the Chirals column lists the number of chiral outliers, the number of chiral centers analysed, the number of these observed in the model and the number defined in the

Chemical Component Dictionary. Similar counts are reported in the Torsion and Rings columns.  
'-' means no outliers of that kind were identified.

Mol	Type	Chain	Res	Link	Chirals	Torsions	Rings
2	NDP	B	302	-	-	2/30/77/77	0/5/5/5
3	RQ1	B	304	-	-	6/10/16/16	0/4/4/4
2	NDP	A	201	-	-	11/30/77/77	0/5/5/5
3	RQ1	A	202	-	-	4/10/16/16	0/4/4/4

All (45) bond length outliers are listed below:

Mol	Chain	Res	Type	Atoms	Z	Observed(Å)	Ideal(Å)
2	B	302	NDP	O4B-C1B	15.06	1.62	1.41
2	A	201	NDP	O4B-C1B	13.44	1.59	1.41
2	B	302	NDP	C6N-C5N	11.62	1.54	1.33
2	A	201	NDP	C6N-C5N	10.96	1.52	1.33
2	B	302	NDP	O4D-C1D	8.60	1.62	1.42
2	A	201	NDP	O4D-C1D	7.16	1.59	1.42
2	B	302	NDP	C2D-C1D	-7.04	1.31	1.53
3	A	202	RQ1	C04-C02	6.31	1.53	1.47
2	A	201	NDP	C2D-C1D	-6.02	1.34	1.53
2	B	302	NDP	O4B-C4B	-6.00	1.31	1.45
2	B	302	NDP	O4D-C4D	-5.96	1.31	1.45
3	B	304	RQ1	O15-C14	5.90	1.41	1.34
2	A	201	NDP	O4D-C4D	-5.77	1.32	1.45
3	A	202	RQ1	O15-C14	5.75	1.41	1.34
2	A	201	NDP	C2N-C3N	5.38	1.50	1.34
2	A	201	NDP	O4B-C4B	-5.37	1.33	1.45
2	B	302	NDP	C2N-C3N	5.19	1.49	1.34
3	B	304	RQ1	C04-C02	4.87	1.52	1.47
2	B	302	NDP	C7N-N7N	4.51	1.45	1.33
2	A	201	NDP	C7N-N7N	4.25	1.44	1.33
3	B	304	RQ1	C08-N07	-3.83	1.32	1.44
3	A	202	RQ1	C08-N07	-3.58	1.33	1.44
2	A	201	NDP	C4N-C5N	3.28	1.57	1.48
2	B	302	NDP	C6A-N6A	3.11	1.45	1.34
2	B	302	NDP	O2D-C2D	3.03	1.50	1.43
2	A	201	NDP	C6A-N6A	2.84	1.44	1.34
2	B	302	NDP	O3D-C3D	-2.81	1.36	1.43
2	A	201	NDP	C4N-C3N	2.80	1.55	1.49
2	B	302	NDP	P2B-O2B	2.80	1.64	1.59
2	A	201	NDP	C6N-N1N	2.78	1.44	1.37
2	B	302	NDP	C4N-C5N	2.77	1.56	1.48
2	A	201	NDP	O3D-C3D	-2.74	1.36	1.43

*Continued on next page...*

*Continued from previous page...*

Mol	Chain	Res	Type	Atoms	Z	Observed(Å)	Ideal(Å)
2	B	302	NDP	O3B-C3B	-2.66	1.36	1.43
2	A	201	NDP	C5A-C4A	-2.62	1.34	1.40
2	B	302	NDP	C6N-N1N	2.59	1.43	1.37
2	B	302	NDP	C2A-N3A	2.54	1.36	1.32
2	B	302	NDP	C5A-C4A	-2.49	1.34	1.40
2	A	201	NDP	C2A-N3A	2.35	1.35	1.32
2	B	302	NDP	O7N-C7N	-2.34	1.18	1.24
2	A	201	NDP	P2B-O2B	2.30	1.63	1.59
2	A	201	NDP	O3B-C3B	-2.21	1.37	1.43
2	B	302	NDP	P2B-O2X	-2.19	1.46	1.54
3	A	202	RQ1	C21-N22	-2.16	1.32	1.36
2	B	302	NDP	C4N-C3N	2.14	1.54	1.49
2	A	201	NDP	O2D-C2D	2.14	1.48	1.43

All (20) bond angle outliers are listed below:

Mol	Chain	Res	Type	Atoms	Z	Observed(°)	Ideal(°)
2	B	302	NDP	C5A-C6A-N6A	9.00	134.03	120.35
2	A	201	NDP	C5A-C6A-N6A	8.58	133.39	120.35
2	B	302	NDP	C1B-N9A-C4A	-7.21	113.97	126.64
2	A	201	NDP	C1B-N9A-C4A	-6.89	114.54	126.64
2	A	201	NDP	N3A-C2A-N1A	-6.86	117.96	128.68
2	B	302	NDP	N6A-C6A-N1A	-6.37	105.36	118.57
2	B	302	NDP	N3A-C2A-N1A	-6.21	118.97	128.68
2	A	201	NDP	N6A-C6A-N1A	-5.81	106.51	118.57
3	A	202	RQ1	C05-N06-N07	5.00	110.48	103.93
3	B	304	RQ1	C05-N06-N07	4.37	109.65	103.93
3	B	304	RQ1	C16-O15-C14	-3.61	111.11	118.50
2	A	201	NDP	PN-O3-PA	-3.28	121.56	132.83
2	B	302	NDP	PN-O3-PA	-2.74	123.44	132.83
2	A	201	NDP	O2N-PN-O5D	2.65	120.05	107.75
4	A	204	PO4	O2-P-O1	-2.59	101.43	110.89
2	A	201	NDP	C1D-N1N-C2N	-2.56	116.85	121.11
2	B	302	NDP	C3N-C2N-N1N	-2.56	119.44	123.10
2	A	201	NDP	O5B-C5B-C4B	-2.56	100.18	108.99
4	A	204	PO4	O4-P-O1	2.21	118.99	110.89
2	A	201	NDP	O3D-C3D-C2D	-2.19	104.73	111.82

There are no chirality outliers.

All (23) torsion outliers are listed below:

Mol	Chain	Res	Type	Atoms
2	A	201	NDP	C5D-O5D-PN-O1N
2	A	201	NDP	C5D-O5D-PN-O2N
3	A	202	RQ1	C18-C19-C20-C28
3	A	202	RQ1	C16-C17-C18-C19
2	A	201	NDP	C3D-C4D-C5D-O5D
2	A	201	NDP	C2D-C1D-N1N-C2N
2	A	201	NDP	O4D-C4D-C5D-O5D
2	A	201	NDP	O4D-C1D-N1N-C2N
3	B	304	RQ1	C16-C17-C18-C19
3	B	304	RQ1	C13-C08-N07-C14
3	B	304	RQ1	C09-C08-N07-C14
3	A	202	RQ1	C09-C08-N07-C14
3	B	304	RQ1	C17-C18-C19-C20
2	B	302	NDP	O4D-C1D-N1N-C2N
3	B	304	RQ1	O15-C16-C17-C18
2	A	201	NDP	O4D-C1D-N1N-C6N
2	A	201	NDP	C2D-C1D-N1N-C6N
2	A	201	NDP	C4D-C5D-O5D-PN
3	B	304	RQ1	C13-C08-N07-N06
3	A	202	RQ1	O15-C16-C17-C18
2	A	201	NDP	C5D-O5D-PN-O3
2	A	201	NDP	C3B-C4B-C5B-O5B
2	B	302	NDP	C2N-C3N-C7N-N7N

There are no ring outliers.

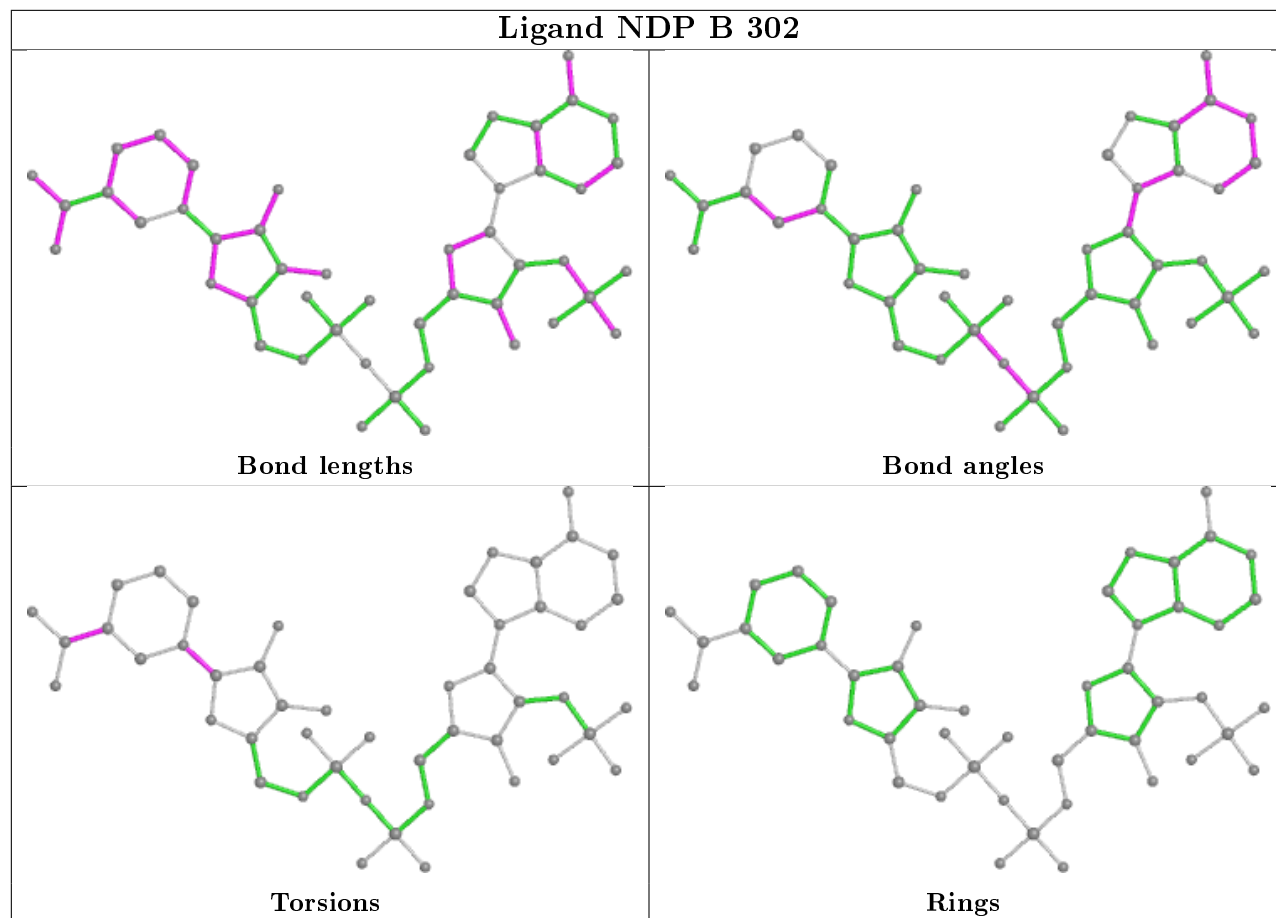
3 monomers are involved in 21 short contacts:

Mol	Chain	Res	Type	Clashes	Symm-Clashes
4	A	204	PO4	4	0
2	B	302	NDP	3	0
2	A	201	NDP	14	0

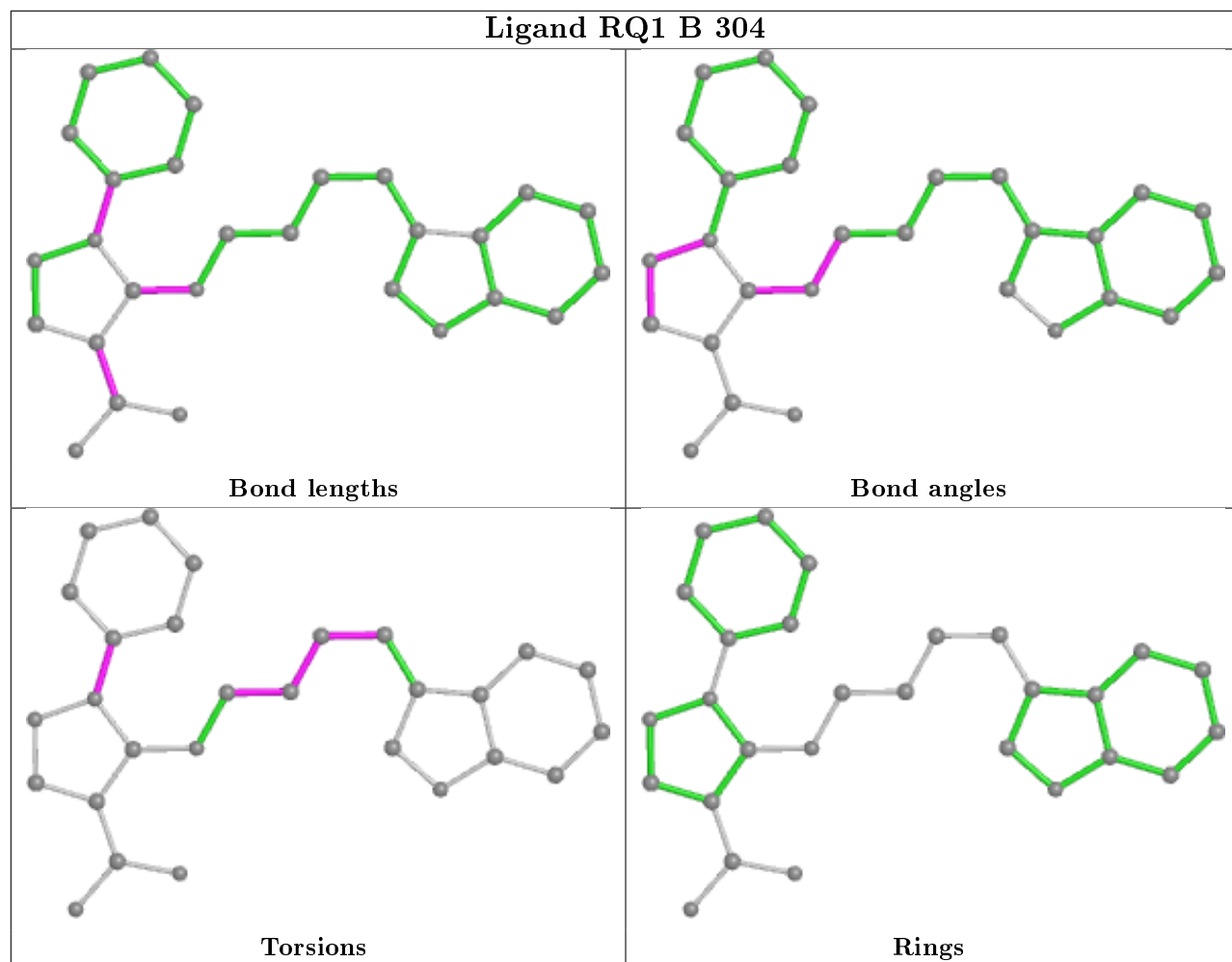
The following is a two-dimensional graphical depiction of Mogul quality analysis of bond lengths, bond angles, torsion angles, and ring geometry for all instances of the Ligand of Interest. In addition, ligands with molecular weight > 250 and outliers as shown on the validation Tables will also be included. For torsion angles, if less than 5% of the Mogul distribution of torsion angles is within 10 degrees of the torsion angle in question, then that torsion angle is considered an outlier. Any bond that is central to one or more torsion angles identified as an outlier by Mogul will be highlighted in the graph. For rings, the root-mean-square deviation (RMSD) between the ring in question and similar rings identified by Mogul is calculated over all ring torsion angles. If the average RMSD is greater than 60 degrees and the minimal RMSD between the ring in question and any Mogul-identified rings is also greater than 60 degrees, then that ring is considered an outlier. The outliers are highlighted in purple. The color gray indicates Mogul did not find sufficient

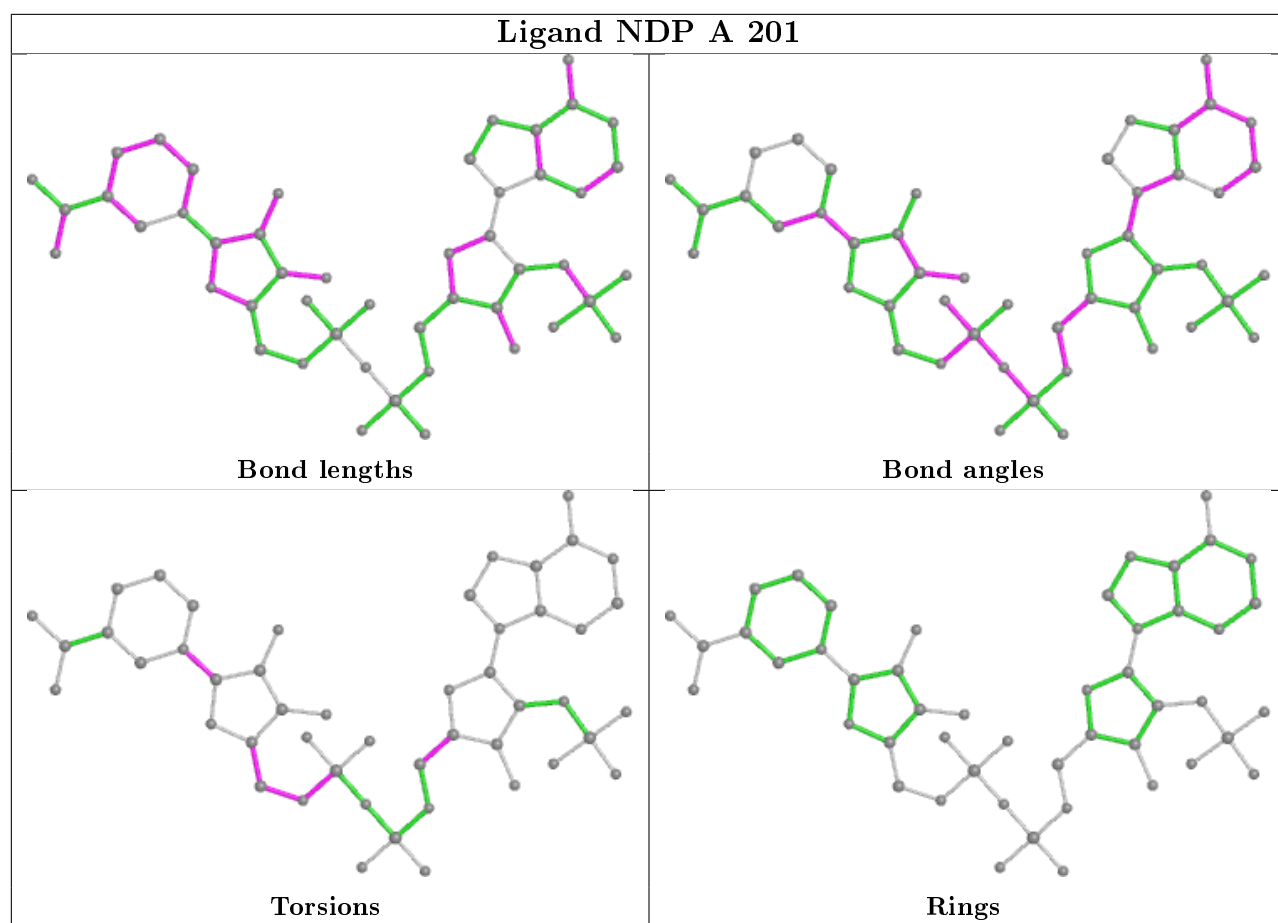


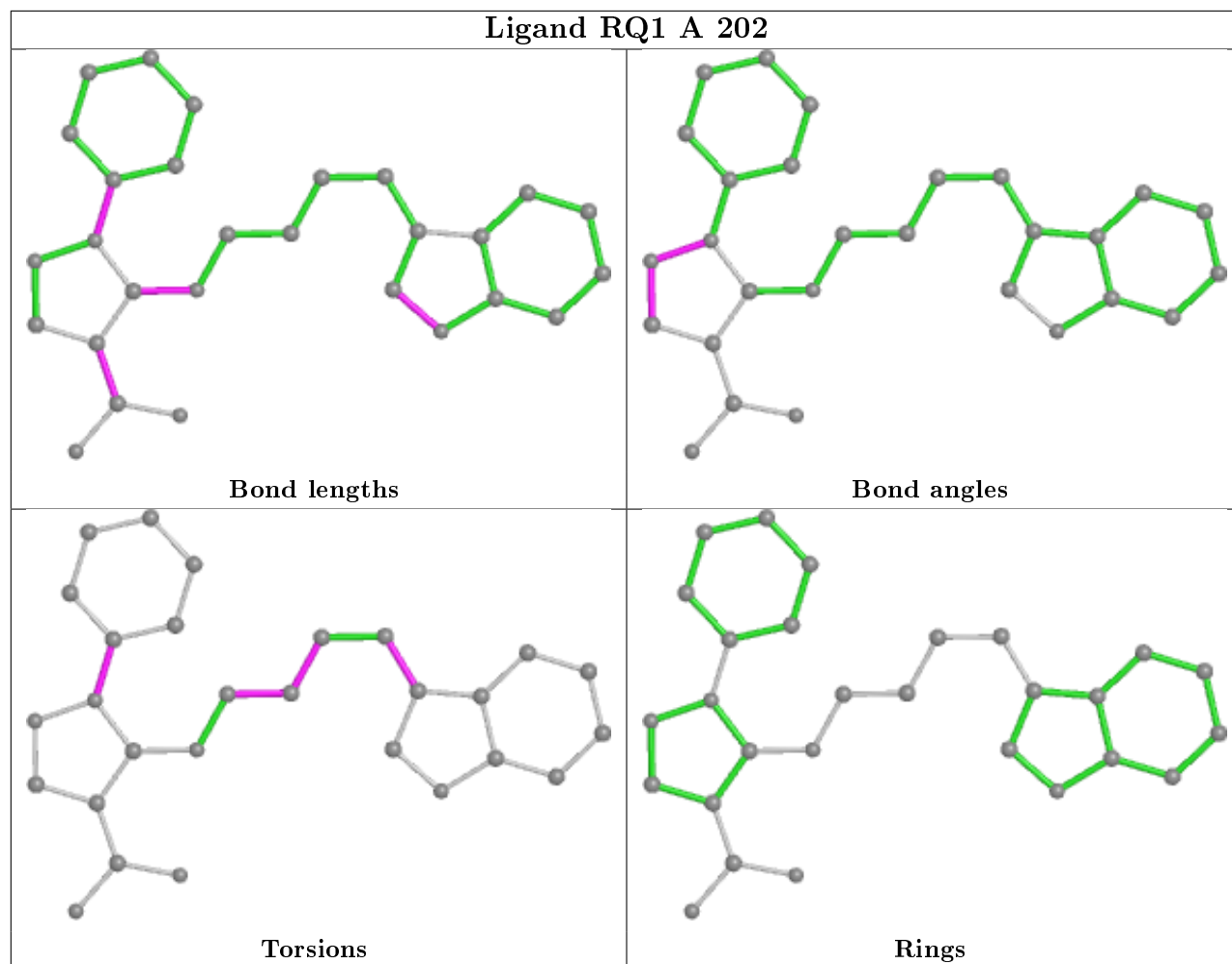
equivalents in the CSD to analyse the geometry.



## Ligand RQ1 B 304







## 5.7 Other polymers [i](#)

There are no such residues in this entry.

## 5.8 Polymer linkage issues [i](#)

There are no chain breaks in this entry.

## 6 Fit of model and data ⓘ

### 6.1 Protein, DNA and RNA chains ⓘ

In the following table, the column labelled ‘#RSRZ> 2’ contains the number (and percentage) of RSRZ outliers, followed by percent RSRZ outliers for the chain as percentile scores relative to all X-ray entries and entries of similar resolution. The OWAB column contains the minimum, median, 95<sup>th</sup> percentile and maximum values of the occupancy-weighted average B-factor per residue. The column labelled ‘Q< 0.9’ lists the number of (and percentage) of residues with an average occupancy less than 0.9.

Mol	Chain	Analysed	<RSRZ>	#RSRZ>2	OWAB(Å <sup>2</sup> )	Q<0.9
1	A	159/161 (98%)	0.39	6 (3%) 40 41	25, 34, 55, 62	0
1	B	159/161 (98%)	0.64	11 (6%) 16 17	26, 39, 67, 81	0
All	All	318/322 (98%)	0.52	17 (5%) 26 27	25, 36, 61, 81	0

All (17) RSRZ outliers are listed below:

Mol	Chain	Res	Type	RSRZ
1	B	67	ARG	4.2
1	B	144	PHE	3.5
1	B	1	MET	3.3
1	B	87	THR	3.1
1	B	147	SER	3.0
1	A	45	ARG	2.9
1	B	140	GLY	2.8
1	B	65	LEU	2.6
1	B	28	GLN	2.5
1	A	138	GLU	2.4
1	B	106	TYR	2.3
1	A	157	HIS	2.2
1	A	34	ILE	2.2
1	B	117	ILE	2.2
1	A	141	GLU	2.0
1	A	136	ARG	2.0
1	B	159	SER	2.0

### 6.2 Non-standard residues in protein, DNA, RNA chains ⓘ

There are no non-standard protein/DNA/RNA residues in this entry.

### 6.3 Carbohydrates ⓘ

There are no monosaccharides in this entry.

### 6.4 Ligands ⓘ

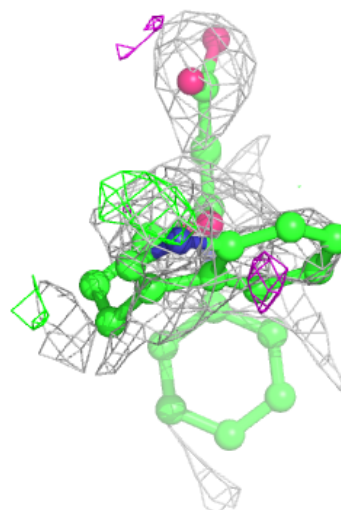
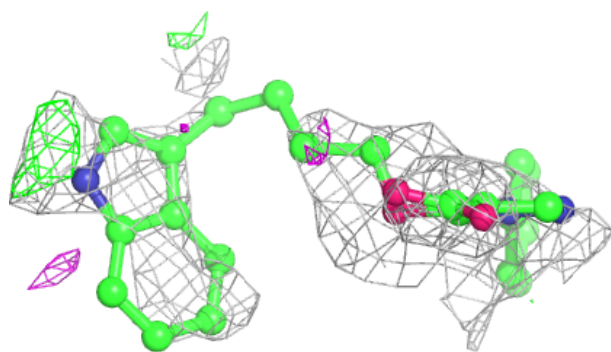
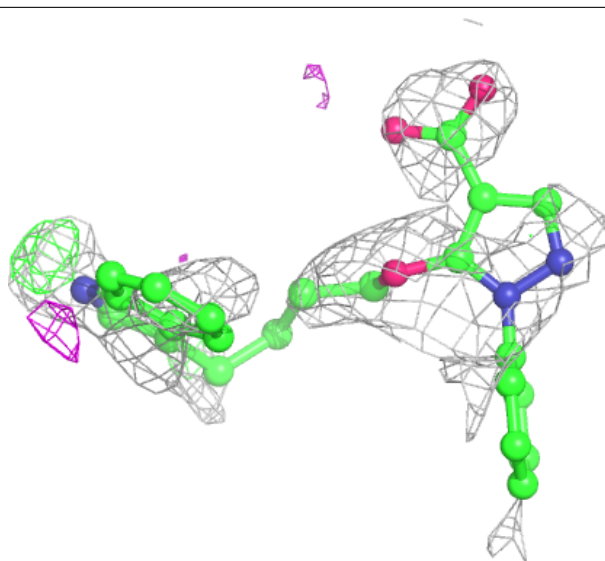
In the following table, the Atoms column lists the number of modelled atoms in the group and the number defined in the chemical component dictionary. The B-factors column lists the minimum, median, 95<sup>th</sup> percentile and maximum values of B factors of atoms in the group. The column labelled 'Q< 0.9' lists the number of atoms with occupancy less than 0.9.

Mol	Type	Chain	Res	Atoms	RSCC	RSR	B-factors(Å <sup>2</sup> )	Q<0.9
3	RQ1	B	304	28/28	0.50	0.44	95,101,108,109	0
4	PO4	A	204	5/5	0.65	0.52	94,95,96,98	0
4	PO4	B	306	5/5	0.73	0.22	96,97,102,105	0
3	RQ1	A	202	28/28	0.76	0.24	54,61,65,66	0
4	PO4	B	307	5/5	0.88	0.31	118,119,119,119	0
4	PO4	B	305	5/5	0.90	0.11	73,75,76,77	0
4	PO4	A	203	5/5	0.92	0.17	68,72,75,76	0
5	CO	B	301	1/1	0.93	0.09	43,43,43,43	0
2	NDP	A	201	48/48	0.94	0.14	24,32,43,47	0
2	NDP	B	302	48/48	0.94	0.12	28,35,47,53	0
5	CO	B	303	1/1	0.98	0.07	45,45,45,45	0

The following is a graphical depiction of the model fit to experimental electron density of all instances of the Ligand of Interest. In addition, ligands with molecular weight > 250 and outliers as shown on the geometry validation Tables will also be included. Each fit is shown from different orientation to approximate a three-dimensional view.

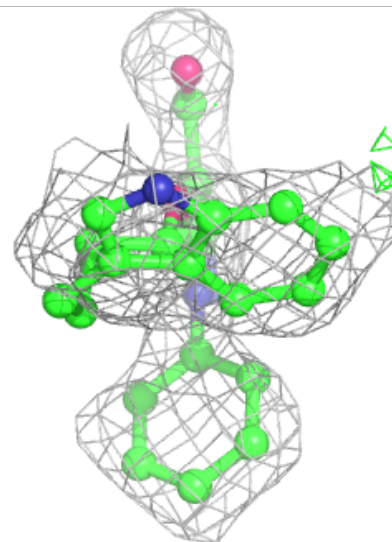
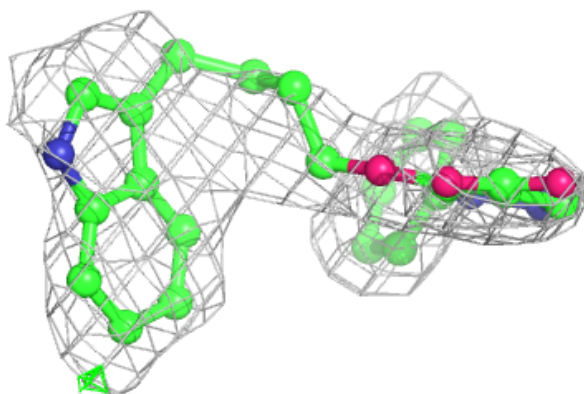
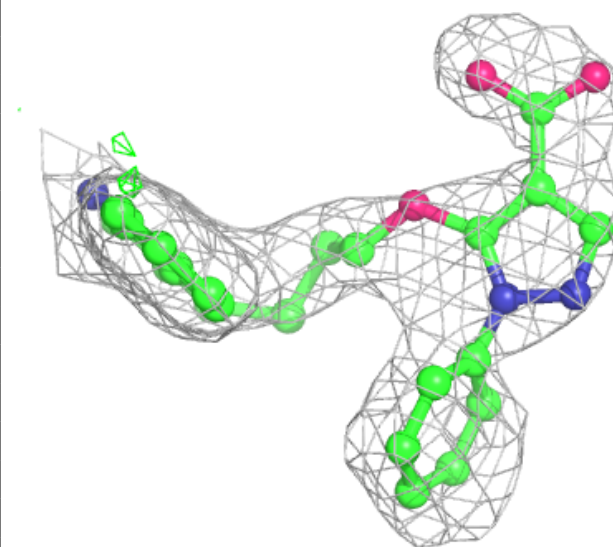
**Electron density around RQ1 B 304:**

$2mF_o-DF_c$  (at 0.7 rmsd) in gray  
 $mF_o-DF_c$  (at 3 rmsd) in purple (negative)  
and green (positive)



**Electron density around RQ1 A 202:**

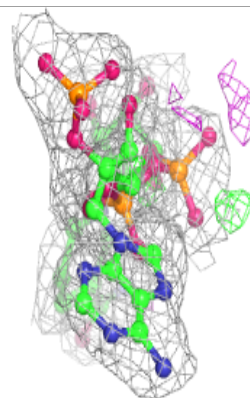
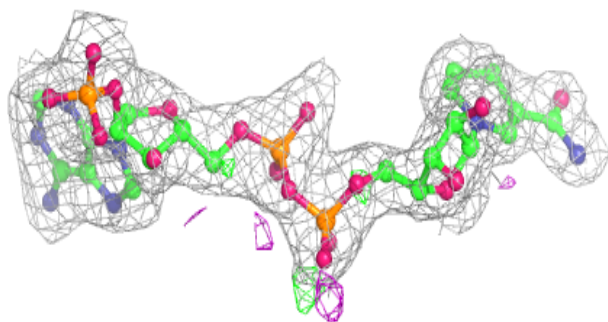
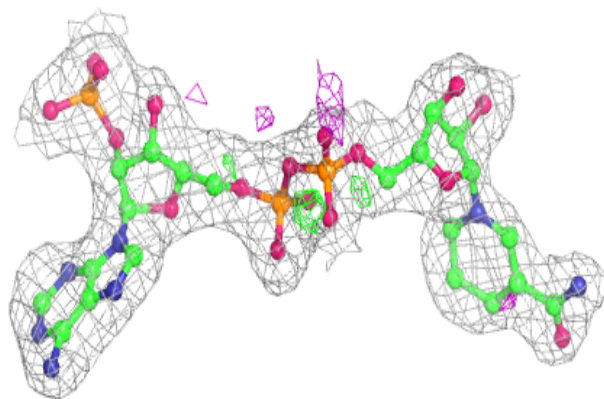
$2mF_o-DF_c$  (at 0.7 rmsd) in gray  
 $mF_o-DF_c$  (at 3 rmsd) in purple (negative)  
and green (positive)



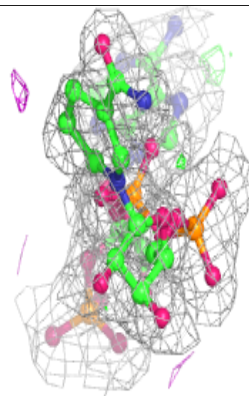
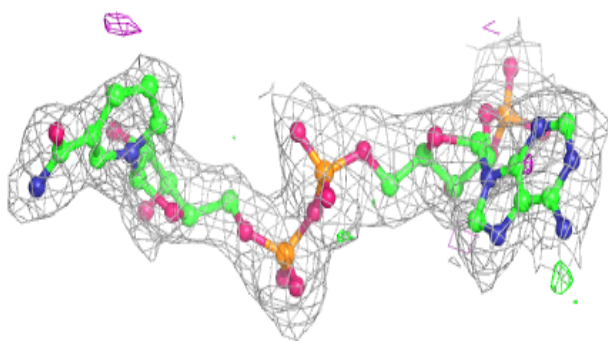
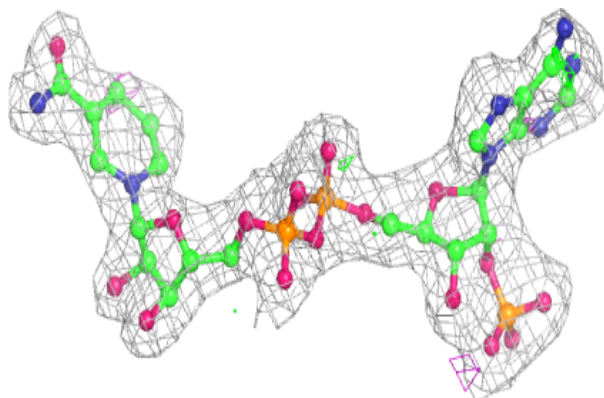


**Electron density around NDP A 201:**

$2mF_o-DF_c$  (at 0.7 rmsd) in gray  
 $mF_o-DF_c$  (at 3 rmsd) in purple (negative)  
and green (positive)

**Electron density around NDP B 302:**

$2mF_o-DF_c$  (at 0.7 rmsd) in gray  
 $mF_o-DF_c$  (at 3 rmsd) in purple (negative)  
and green (positive)



## 6.5 Other polymers [i](#)

There are no such residues in this entry.