



Full wwPDB X-ray Structure Validation Report ⓘ

Aug 7, 2020 – 04:00 AM BST

PDB ID : 1VXO
Title : METHYLPHOSPHONYLATED ACETYLCHOLINESTERASE (AGED)
OBTAINED BY REACTION WITH O-ETHYL-S-[2-[BIS(1-METHYLETHYL)AMINO]ETHYL] METHYLPHOSPHONOTHIOATE (VX)
Authors : Millard, C.B.; Silman, I.; Sussman, J.L.
Deposited on : 1999-04-21
Resolution : 2.40 Å(reported)

This is a Full wwPDB X-ray Structure Validation Report for a publicly released PDB entry.

We welcome your comments at validation@mail.wwpdb.org

A user guide is available at

<https://www.wwpdb.org/validation/2017/XrayValidationReportHelp>

with specific help available everywhere you see the ⓘ symbol.

The following versions of software and data (see [references ⓘ](#)) were used in the production of this report:

MolProbity : 4.02b-467
Mogul : 1.8.5 (274361), CSD as541be (2020)
Xtriage (Phenix) : **NOT EXECUTED**
EDS : **NOT EXECUTED**
Percentile statistics : 20191225.v01 (using entries in the PDB archive December 25th 2019)
Ideal geometry (proteins) : Engh & Huber (2001)
Ideal geometry (DNA, RNA) : Parkinson et al. (1996)
Validation Pipeline (wwPDB-VP) : 2.13.1

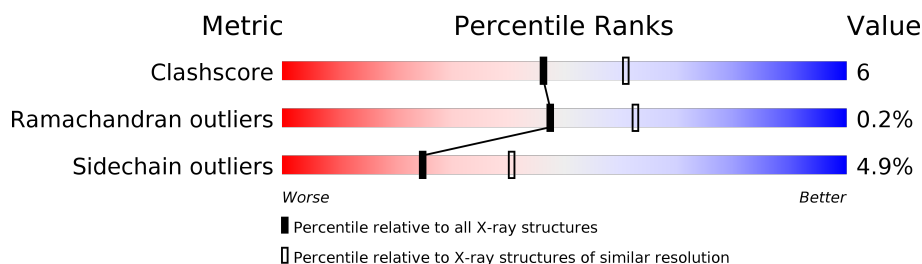
1 Overall quality at a glance

The following experimental techniques were used to determine the structure:

X-RAY DIFFRACTION

The reported resolution of this entry is 2.40 Å.

Percentile scores (ranging between 0-100) for global validation metrics of the entry are shown in the following graphic. The table shows the number of entries on which the scores are based.



Metric	Whole archive (#Entries)	Similar resolution (#Entries, resolution range(Å))
Clashscore	141614	4398 (2.40-2.40)
Ramachandran outliers	138981	4318 (2.40-2.40)
Sidechain outliers	138945	4319 (2.40-2.40)

The table below summarises the geometric issues observed across the polymeric chains and their fit to the electron density. The red, orange, yellow and green segments on the lower bar indicate the fraction of residues that contain outliers for ≥ 3 , 2, 1 and 0 types of geometric quality criteria respectively. A grey segment represents the fraction of residues that are not modelled. The numeric value for each fraction is indicated below the corresponding segment, with a dot representing fractions $\leq 5\%$.

Note EDS was not executed.

Mol	Chain	Length	Quality of chain
1	A	537	<div>82% 14% . .</div>

The following table lists non-polymeric compounds, carbohydrate monomers and non-standard residues in protein, DNA, RNA chains that are outliers for geometric or electron-density-fit criteria:

Mol	Type	Chain	Res	Chirality	Geometry	Clashes	Electron density
2	NAG	A	9059	X	-	-	-

2 Entry composition [i](#)

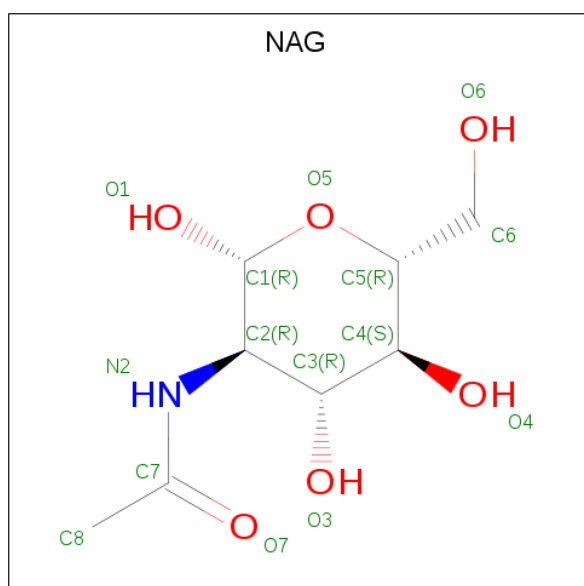
There are 4 unique types of molecules in this entry. The entry contains 4492 atoms, of which 0 are hydrogens and 0 are deuteriums.

In the tables below, the ZeroOcc column contains the number of atoms modelled with zero occupancy, the AltConf column contains the number of residues with at least one atom in alternate conformation and the Trace column contains the number of residues modelled with at most 2 atoms.

- Molecule 1 is a protein called PROTEIN (ACETYLCHOLINESTERASE).

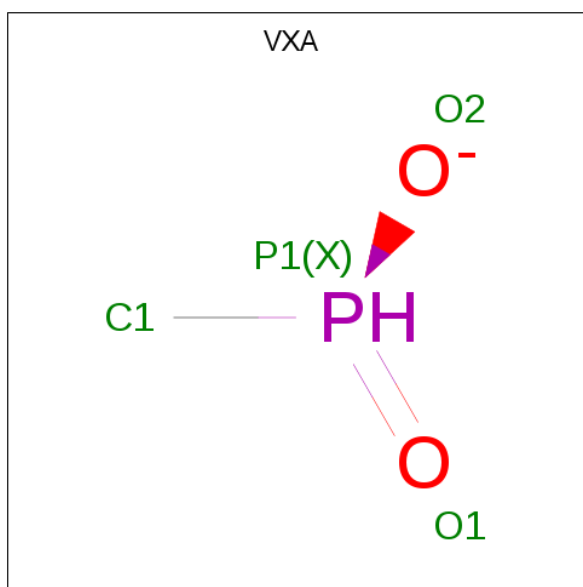
Mol	Chain	Residues	Atoms					ZeroOcc	AltConf	Trace
1	A	532	Total	C	N	O	S	0	0	0
			4244	2721	720	781	22			

- Molecule 2 is 2-acetamido-2-deoxy-beta-D-glucopyranose (three-letter code: NAG) (formula: $C_8H_{15}NO_6$).



Mol	Chain	Residues	Atoms				ZeroOcc	AltConf
2	A	1	Total	C	N	O	0	0
			14	8	1	5		
2	A	1	Total	C	N	O	0	0
			14	8	1	5		

- Molecule 3 is METHYLPHOSPHONIC ACID ESTER GROUP (three-letter code: VXA) (formula: CH_4O_2P).



Mol	Chain	Residues	Atoms				ZeroOcc	AltConf
3	A	1	Total	C	O	P	0	0
			4	1	2	1		

- Molecule 4 is water.

Mol	Chain	Residues	Atoms		ZeroOcc	AltConf
4	A	216	Total	O	0	0
			216	216		

3 Residue-property plots [i](#)

These plots are drawn for all protein, RNA, DNA and oligosaccharide chains in the entry. The first graphic for a chain summarises the proportions of the various outlier classes displayed in the second graphic. The second graphic shows the sequence view annotated by issues in geometry. Residues are color-coded according to the number of geometric quality criteria for which they contain at least one outlier: green = 0, yellow = 1, orange = 2 and red = 3 or more. Stretches of 2 or more consecutive residues without any outlier are shown as a green connector. Residues present in the sample, but not in the model, are shown in grey.

Note EDS was not executed.

• Molecule 1: PROTEIN (ACETYLCHOLINESTERASE)



4 Data and refinement statistics

Xtriage (Phenix) and EDS were not executed - this section is therefore incomplete.

Property	Value	Source
Space group	P 31 2 1	Depositor
Cell constants a, b, c, α , β , γ	112.51Å 112.51Å 137.96Å 90.00° 90.00° 120.00°	Depositor
Resolution (Å)	30.00 – 2.40	Depositor
% Data completeness (in resolution range)	97.0 (30.00-2.40)	Depositor
R_{merge}	(Not available)	Depositor
R_{sym}	0.06	Depositor
Refinement program	CNS	Depositor
R, R_{free}	0.194 , 0.234	Depositor
Estimated twinning fraction	No twinning to report.	Xtriage
Total number of atoms	4492	wwPDB-VP
Average B, all atoms (Å ²)	37.0	wwPDB-VP

5 Model quality

5.1 Standard geometry

Bond lengths and bond angles in the following residue types are not validated in this section: VXA, NAG

The Z score for a bond length (or angle) is the number of standard deviations the observed value is removed from the expected value. A bond length (or angle) with $|Z| > 5$ is considered an outlier worth inspection. RMSZ is the root-mean-square of all Z scores of the bond lengths (or angles).

Mol	Chain	Bond lengths		Bond angles	
		RMSZ	$\# Z > 5$	RMSZ	$\# Z > 5$
1	A	1.07	4/4367 (0.1%)	1.00	18/5929 (0.3%)

Chiral center outliers are detected by calculating the chiral volume of a chiral center and verifying if the center is modelled as a planar moiety or with the opposite hand. A planarity outlier is detected by checking planarity of atoms in a peptide group, atoms in a mainchain group or atoms of a sidechain that are expected to be planar.

Mol	Chain	#Chirality outliers	#Planarity outliers
1	A	0	1

All (4) bond length outliers are listed below:

Mol	Chain	Res	Type	Atoms	Z	Observed(Å)	Ideal(Å)
1	A	344	GLU	CD-OE1	8.43	1.34	1.25
1	A	344	GLU	CD-OE2	8.42	1.34	1.25
1	A	344	GLU	CG-CD	5.46	1.60	1.51
1	A	408	VAL	CB-CG1	-5.20	1.42	1.52

All (18) bond angle outliers are listed below:

Mol	Chain	Res	Type	Atoms	Z	Observed(°)	Ideal(°)
1	A	243	ARG	NE-CZ-NH2	-9.38	115.61	120.30
1	A	216	ARG	NE-CZ-NH2	-7.33	116.64	120.30
1	A	494	LEU	CA-CB-CG	6.45	130.13	115.30
1	A	221	ARG	NE-CZ-NH1	6.24	123.42	120.30
1	A	468	ARG	NE-CZ-NH1	-6.21	117.19	120.30
1	A	243	ARG	CG-CD-NE	-6.11	98.97	111.80
1	A	510	MET	CG-SD-CE	6.11	109.98	100.20
1	A	83	MET	CG-SD-CE	5.99	109.78	100.20
1	A	358	LEU	CA-CB-CG	5.96	129.00	115.30

Continued on next page...

Continued from previous page...

Mol	Chain	Res	Type	Atoms	Z	Observed(°)	Ideal(°)
1	A	221	ARG	NE-CZ-NH2	-5.81	117.40	120.30
1	A	244	ARG	NE-CZ-NH1	5.70	123.15	120.30
1	A	326	ASP	CB-CG-OD1	5.46	123.21	118.30
1	A	452	LEU	CA-CB-CG	5.40	127.72	115.30
1	A	244	ARG	NE-CZ-NH2	-5.34	117.63	120.30
1	A	285	ASP	N-CA-C	-5.21	96.93	111.00
1	A	479	THR	N-CA-C	5.15	124.89	111.00
1	A	88	ARG	NE-CZ-NH2	-5.05	117.78	120.30
1	A	129	VAL	CB-CA-C	-5.05	101.80	111.40

There are no chirality outliers.

All (1) planarity outliers are listed below:

Mol	Chain	Res	Type	Group
1	A	442	TYR	Sidechain

5.2 Too-close contacts

In the following table, the Non-H and H(model) columns list the number of non-hydrogen atoms and hydrogen atoms in the chain respectively. The H(added) column lists the number of hydrogen atoms added and optimized by MolProbity. The Clashes column lists the number of clashes within the asymmetric unit, whereas Symm-Clashes lists symmetry related clashes.

Mol	Chain	Non-H	H(model)	H(added)	Clashes	Symm-Clashes
1	A	4244	0	4094	53	0
2	A	28	0	26	0	0
3	A	4	0	3	0	0
4	A	216	0	0	4	0
All	All	4492	0	4123	53	0

The all-atom clashscore is defined as the number of clashes found per 1000 atoms (including hydrogen atoms). The all-atom clashscore for this structure is 6.

All (53) close contacts within the same asymmetric unit are listed below, sorted by their clash magnitude.

Atom-1	Atom-2	Interatomic distance (Å)	Clash overlap (Å)
1:A:83:MET:HE1	4:A:1198:HOH:O	1.84	0.78
1:A:190:ASP:OD1	1:A:192:LYS:HG2	1.87	0.73
1:A:452:LEU:HD13	1:A:467:ARG:NH2	2.10	0.66

Continued on next page...

Continued from previous page...

Atom-1	Atom-2	Interatomic distance (Å)	Clash overlap (Å)
1:A:453:VAL:HG22	1:A:456:LEU:HG	1.77	0.65
1:A:490:SER:HB3	1:A:510:MET:HE3	1.78	0.64
1:A:379:MET:HE3	4:A:1132:HOH:O	1.97	0.63
1:A:320:LEU:HD23	1:A:320:LEU:C	2.20	0.62
1:A:23:LEU:HD11	1:A:452:LEU:HD12	1.83	0.61
1:A:484:GLU:HB2	1:A:487:SER:HB2	1.81	0.61
1:A:46:ARG:HH11	1:A:46:ARG:HB3	1.66	0.60
1:A:110:THR:OG1	1:A:478:LYS:HG2	2.03	0.58
1:A:455:GLU:CD	1:A:455:GLU:H	2.07	0.57
1:A:302:PRO:HD2	1:A:308:MET:SD	2.45	0.56
1:A:43:MET:HE1	1:A:49:GLU:HG2	1.88	0.56
1:A:223:ILE:HA	1:A:320:LEU:O	2.07	0.54
1:A:489:GLU:OE1	1:A:489:GLU:HA	2.09	0.53
1:A:220:ARG:HG3	1:A:221:ARG:HG3	1.91	0.52
1:A:344:GLU:OE1	1:A:346:LYS:HE2	2.11	0.51
1:A:216:ARG:HB3	1:A:315:LYS:HB2	1.92	0.50
1:A:129:VAL:HG22	4:A:1054:HOH:O	2.11	0.50
1:A:228:SER:HB2	1:A:229:PRO:HD2	1.93	0.50
1:A:456:LEU:O	1:A:457:ASN:HB2	2.12	0.49
1:A:451:PRO:HA	1:A:458:TYR:CD1	2.47	0.49
1:A:25:SER:OG	1:A:26:HIS:N	2.46	0.49
1:A:520:MET:HG2	4:A:1005:HOH:O	2.12	0.48
1:A:6:LEU:CD2	1:A:28:SER:HB3	2.43	0.48
1:A:43:MET:CE	1:A:49:GLU:HG2	2.44	0.48
1:A:6:LEU:HD23	1:A:28:SER:HB3	1.96	0.48
1:A:484:GLU:HB2	1:A:487:SER:CB	2.43	0.47
1:A:453:VAL:O	1:A:453:VAL:HG22	2.15	0.46
1:A:63:TYR:CD1	1:A:126:THR:HG22	2.51	0.46
1:A:508:GLU:HB3	1:A:509:PRO:CD	2.46	0.45
1:A:461:GLU:H	1:A:461:GLU:CD	2.21	0.44
1:A:216:ARG:HG2	1:A:216:ARG:H	1.61	0.43
1:A:450:LEU:N	1:A:450:LEU:CD2	2.81	0.43
1:A:452:LEU:HD22	1:A:463:GLU:HG3	1.99	0.43
1:A:105:ARG:HA	1:A:106:PRO:HD3	1.91	0.43
1:A:452:LEU:HD13	1:A:467:ARG:CZ	2.48	0.42
1:A:421:TYR:HB2	1:A:505:LEU:HD22	2.02	0.42
1:A:344:GLU:OE1	1:A:346:LYS:CE	2.68	0.42
1:A:197:PHE:HB3	1:A:223:ILE:HB	2.02	0.42
1:A:531:LEU:HD23	1:A:531:LEU:C	2.40	0.42
1:A:456:LEU:HA	1:A:456:LEU:HD23	1.85	0.42
1:A:439:ILE:HG22	1:A:440:HIS:N	2.36	0.41

Continued on next page...

Continued from previous page...

Atom-1	Atom-2	Interatomic distance (Å)	Clash overlap (Å)
1:A:504:ASP:CG	1:A:513:HIS:HE2	2.23	0.41
1:A:405:MET:HA	1:A:408:VAL:HG12	2.03	0.41
1:A:419:TYR:CZ	1:A:494:LEU:HD13	2.55	0.41
1:A:421:TYR:CD1	1:A:421:TYR:C	2.94	0.41
1:A:181:HIS:HD2	1:A:182:ASP:OD1	2.04	0.40
1:A:197:PHE:CB	1:A:223:ILE:HB	2.51	0.40
1:A:5:GLU:OE2	1:A:104:PRO:HA	2.22	0.40
1:A:212:SER:HA	1:A:213:PRO:HD3	1.93	0.40
1:A:502:PHE:CE1	1:A:516:LEU:HB2	2.57	0.40

There are no symmetry-related clashes.

5.3 Torsion angles [i](#)

5.3.1 Protein backbone [i](#)

In the following table, the Percentiles column shows the percent Ramachandran outliers of the chain as a percentile score with respect to all X-ray entries followed by that with respect to entries of similar resolution.

The Analysed column shows the number of residues for which the backbone conformation was analysed, and the total number of residues.

Mol	Chain	Analysed	Favoured	Allowed	Outliers	Percentiles
1	A	530/537 (99%)	502 (95%)	27 (5%)	1 (0%)	47 62

All (1) Ramachandran outliers are listed below:

Mol	Chain	Res	Type
1	A	487	SER

5.3.2 Protein sidechains [i](#)

In the following table, the Percentiles column shows the percent sidechain outliers of the chain as a percentile score with respect to all X-ray entries followed by that with respect to entries of similar resolution.

The Analysed column shows the number of residues for which the sidechain conformation was analysed, and the total number of residues.

Mol	Chain	Analysed	Rotameric	Outliers	Percentiles	
1	A	465/469 (99%)	442 (95%)	23 (5%)	25	40

All (23) residues with a non-rotameric sidechain are listed below:

Mol	Chain	Res	Type
1	A	16	MET
1	A	19	ARG
1	A	22	VAL
1	A	28	SER
1	A	38	PRO
1	A	46	ARG
1	A	129	VAL
1	A	192	LYS
1	A	197	PHE
1	A	216	ARG
1	A	243	ARG
1	A	288	PHE
1	A	294	PRO
1	A	321	LEU
1	A	330	PHE
1	A	349	ARG
1	A	350	GLU
1	A	358	LEU
1	A	391	LEU
1	A	473	TRP
1	A	490	SER
1	A	499	GLU
1	A	505	LEU

Some sidechains can be flipped to improve hydrogen bonding and reduce clashes. All (3) such sidechains are listed below:

Mol	Chain	Res	Type
1	A	68	GLN
1	A	74	GLN
1	A	181	HIS

5.3.3 RNA ⓘ

There are no RNA molecules in this entry.

5.4 Non-standard residues in protein, DNA, RNA chains ⓘ

There are no non-standard protein/DNA/RNA residues in this entry.

5.5 Carbohydrates ⓘ

There are no monosaccharides in this entry.

5.6 Ligand geometry ⓘ

3 ligands are modelled in this entry.

In the following table, the Counts columns list the number of bonds (or angles) for which Mogul statistics could be retrieved, the number of bonds (or angles) that are observed in the model and the number of bonds (or angles) that are defined in the Chemical Component Dictionary. The Link column lists molecule types, if any, to which the group is linked. The Z score for a bond length (or angle) is the number of standard deviations the observed value is removed from the expected value. A bond length (or angle) with $|Z| > 2$ is considered an outlier worth inspection. RMSZ is the root-mean-square of all Z scores of the bond lengths (or angles).

Mol	Type	Chain	Res	Link	Bond lengths			Bond angles		
					Counts	RMSZ	# $ Z > 2$	Counts	RMSZ	# $ Z > 2$
2	NAG	A	9059	1	14,14,15	1.65	3 (21%)	17,19,21	1.47	3 (17%)
2	NAG	A	9416	1	14,14,15	1.16	1 (7%)	17,19,21	0.96	1 (5%)
3	VXA	A	999	1	0,3,3	0.00	-	0,3,3	0.00	-

In the following table, the Chirals column lists the number of chiral outliers, the number of chiral centers analysed, the number of these observed in the model and the number defined in the Chemical Component Dictionary. Similar counts are reported in the Torsion and Rings columns. '-' means no outliers of that kind were identified.

Mol	Type	Chain	Res	Link	Chirals	Torsions	Rings
2	NAG	A	9059	1	1/1/5/7	1/6/23/26	0/1/1/1
2	NAG	A	9416	1	-	2/6/23/26	0/1/1/1

All (4) bond length outliers are listed below:

Mol	Chain	Res	Type	Atoms	Z	Observed(Å)	Ideal(Å)
2	A	9059	NAG	O5-C5	3.77	1.51	1.43
2	A	9059	NAG	C3-C2	2.57	1.58	1.52
2	A	9059	NAG	O5-C1	2.52	1.47	1.43
2	A	9416	NAG	C6-C5	2.17	1.59	1.51

All (4) bond angle outliers are listed below:

Mol	Chain	Res	Type	Atoms	Z	Observed(°)	Ideal(°)
2	A	9059	NAG	C4-C3-C2	3.09	115.54	111.02
2	A	9059	NAG	O5-C1-C2	-2.90	106.70	111.29
2	A	9059	NAG	C2-N2-C7	-2.43	119.44	122.90
2	A	9416	NAG	C3-C4-C5	2.10	113.99	110.24

All (1) chirality outliers are listed below:

Mol	Chain	Res	Type	Atom
2	A	9059	NAG	C1

All (3) torsion outliers are listed below:

Mol	Chain	Res	Type	Atoms
2	A	9416	NAG	O5-C5-C6-O6
2	A	9416	NAG	C4-C5-C6-O6
2	A	9059	NAG	O5-C5-C6-O6

There are no ring outliers.

No monomer is involved in short contacts.

5.7 Other polymers [i](#)

There are no such residues in this entry.

5.8 Polymer linkage issues [i](#)

There are no chain breaks in this entry.

6 Fit of model and data ⓘ

6.1 Protein, DNA and RNA chains ⓘ

EDS was not executed - this section is therefore empty.

6.2 Non-standard residues in protein, DNA, RNA chains ⓘ

EDS was not executed - this section is therefore empty.

6.3 Carbohydrates ⓘ

EDS was not executed - this section is therefore empty.

6.4 Ligands ⓘ

EDS was not executed - this section is therefore empty.

6.5 Other polymers ⓘ

EDS was not executed - this section is therefore empty.