



# wwPDB X-ray Structure Validation Summary Report ⓘ

Sep 16, 2020 – 10:11 AM EDT

PDB ID : 6W2B  
Title : Anomalous bromine signal reveals the position of Br-paroxetine complexed with the serotonin transporter at the central site  
Authors : Coleman, J.A.; Navratna, V.; Yang, D.  
Deposited on : 2020-03-05  
Resolution : 4.70 Å(reported)

This is a wwPDB X-ray Structure Validation Summary Report for a publicly released PDB entry.

We welcome your comments at [validation@mail.wwpdb.org](mailto:validation@mail.wwpdb.org)

A user guide is available at

<https://www.wwpdb.org/validation/2017/XrayValidationReportHelp>

with specific help available everywhere you see the ⓘ symbol.

---

The following versions of software and data (see [references ⓘ](#)) were used in the production of this report:

MolProbity : 4.02b-467  
Mogul : 1.8.5 (274361), CSD as541be (2020)  
Xtriage (Phenix) : 1.13  
EDS : 2.14.4  
buster-report : 1.1.7 (2018)  
Percentile statistics : 20191225.v01 (using entries in the PDB archive December 25th 2019)  
Refmac : 5.8.0158  
CCP4 : 7.0.044 (Gargrove)  
Ideal geometry (proteins) : Engh & Huber (2001)  
Ideal geometry (DNA, RNA) : Parkinson et al. (1996)  
Validation Pipeline (wwPDB-VP) : 2.14.4

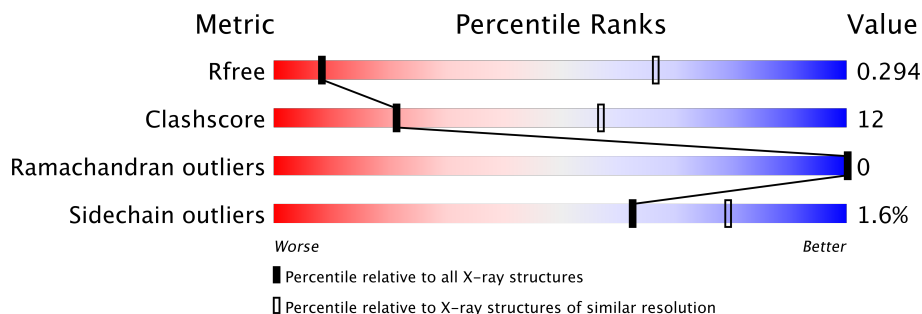
# 1 Overall quality at a glance

The following experimental techniques were used to determine the structure:

*X-RAY DIFFRACTION*

The reported resolution of this entry is 4.70 Å.

Percentile scores (ranging between 0-100) for global validation metrics of the entry are shown in the following graphic. The table shows the number of entries on which the scores are based.



Metric	Whole archive (#Entries)	Similar resolution (#Entries, resolution range(Å))
$R_{free}$	130704	1085 (5.58-3.80)
Clashscore	141614	1159 (5.60-3.80)
Ramachandran outliers	138981	1094 (5.58-3.80)
Sidechain outliers	138945	1074 (5.58-3.80)

The table below summarises the geometric issues observed across the polymeric chains and their fit to the electron density. The red, orange, yellow and green segments on the lower bar indicate the fraction of residues that contain outliers for  $\geq 3$ , 2, 1 and 0 types of geometric quality criteria respectively. A grey segment represents the fraction of residues that are not modelled. The numeric value for each fraction is indicated below the corresponding segment, with a dot representing fractions  $\leq 5\%$

Mol	Chain	Length	Quality of chain
1	A	549	
2	B	229	
3	C	214	

## 2 Entry composition

There are 5 unique types of molecules in this entry. The entry contains 7637 atoms, of which 0 are hydrogens and 0 are deuteriums.

In the tables below, the ZeroOcc column contains the number of atoms modelled with zero occupancy, the AltConf column contains the number of residues with at least one atom in alternate conformation and the Trace column contains the number of residues modelled with at most 2 atoms.

- Molecule 1 is a protein called Sodium-dependent serotonin transporter.

Mol	Chain	Residues	Atoms					ZeroOcc	AltConf	Trace
1	A	544	Total	C	N	O	S	0	0	0
			4294	2871	663	736	24			

There are 10 discrepancies between the modelled and reference sequences:

Chain	Residue	Modelled	Actual	Comment	Reference
A	74	GLY	-	expression tag	UNP P31645
A	75	SER	-	expression tag	UNP P31645
A	110	ALA	TYR	conflict	UNP P31645
A	291	ALA	ILE	conflict	UNP P31645
A	554	ALA	CYS	conflict	UNP P31645
A	580	ALA	CYS	conflict	UNP P31645
A	619	LEU	-	expression tag	UNP P31645
A	620	VAL	-	expression tag	UNP P31645
A	621	PRO	-	expression tag	UNP P31645
A	622	ARG	-	expression tag	UNP P31645

- Molecule 2 is a protein called 8B6 heavy chain antibody fragment.

Mol	Chain	Residues	Atoms					ZeroOcc	AltConf	Trace
2	B	218	Total	C	N	O	S	0	0	0
			1643	1038	266	331	8			

- Molecule 3 is a protein called 8B6 light chain antibody fragment.

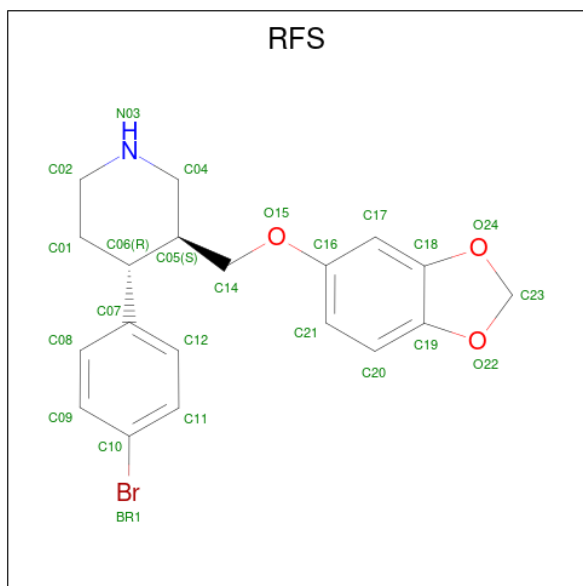
Mol	Chain	Residues	Atoms					ZeroOcc	AltConf	Trace
3	C	214	Total	C	N	O	S	0	0	0
			1662	1037	280	337	8			

- Molecule 4 is 2-acetamido-2-deoxy-beta-D-glucopyranose (three-letter code: NAG) (formula: C<sub>8</sub>H<sub>15</sub>NO<sub>6</sub>).



Mol	Chain	Residues	Atoms				ZeroOcc	AltConf
4	A	1	Total	C	N	O	0	0
			14	8	1	5		

- Molecule 5 is Br-paroxetine (three-letter code: RFS) (formula:  $C_{19}H_{20}BrNO_3$ ) (labeled as "Ligand of Interest" by author).

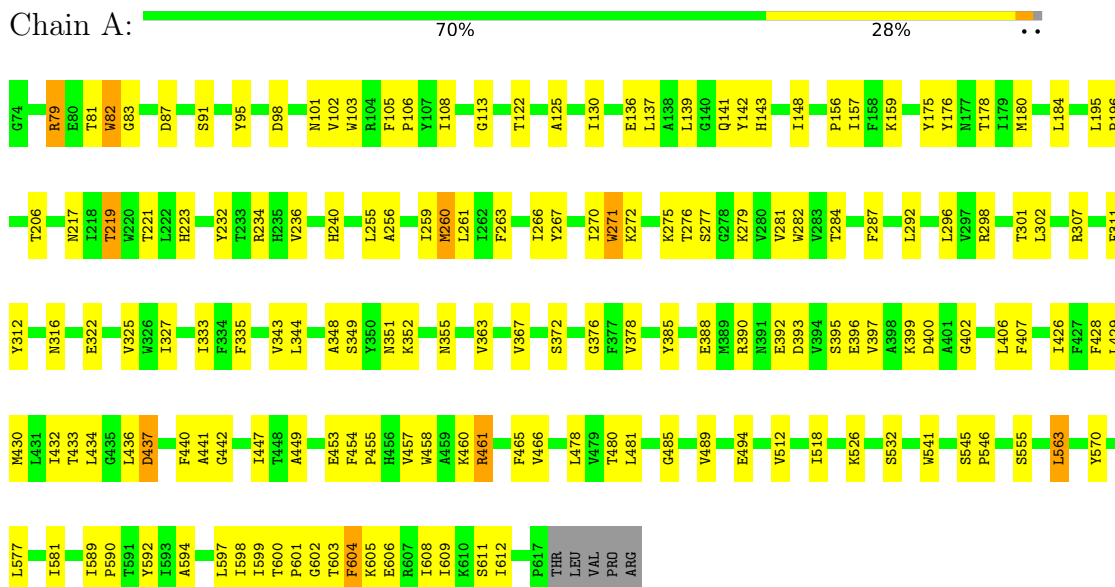


Mol	Chain	Residues	Atoms				ZeroOcc	AltConf
5	A	1	Total	Br	C	N	O	0
			24	1	19	1	3	

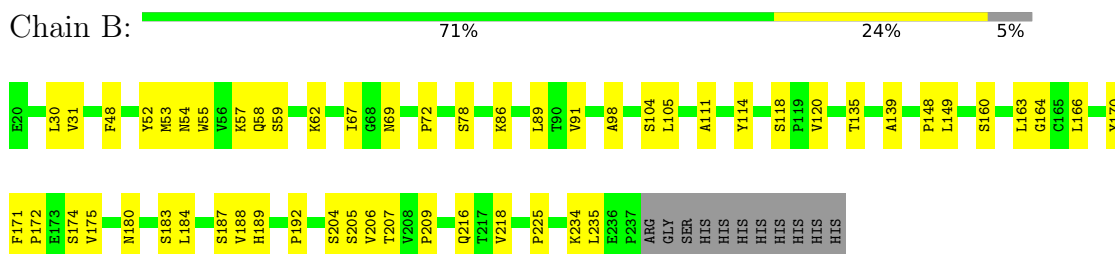
### 3 Residue-property plots

These plots are drawn for all protein, RNA, DNA and oligosaccharide chains in the entry. The first graphic for a chain summarises the proportions of the various outlier classes displayed in the second graphic. The second graphic shows the sequence view annotated by issues in geometry. Residues are color-coded according to the number of geometric quality criteria for which they contain at least one outlier: green = 0, yellow = 1, orange = 2 and red = 3 or more. Stretches of 2 or more consecutive residues without any outlier are shown as a green connector. Residues present in the sample, but not in the model, are shown in grey.

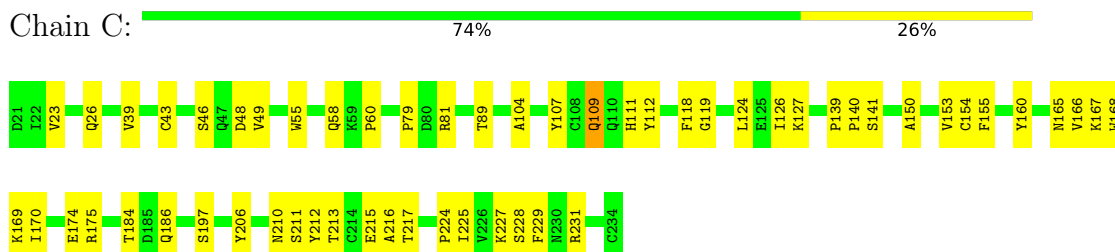
#### • Molecule 1: Sodium-dependent serotonin transporter



#### • Molecule 2: 8B6 heavy chain antibody fragment



#### • Molecule 3: 8B6 light chain antibody fragment



## 4 Data and refinement statistics

Property	Value	Source
Space group	C 2 2 21	Depositor
Cell constants a, b, c, $\alpha$ , $\beta$ , $\gamma$	128.02Å 161.91Å 139.66Å 90.00° 90.00° 90.00°	Depositor
Resolution (Å)	29.76 – 4.70 29.76 – 4.70	Depositor EDS
% Data completeness (in resolution range)	99.8 (29.76-4.70) 99.8 (29.76-4.70)	Depositor EDS
$R_{merge}$	0.14	Depositor
$R_{sym}$	(Not available)	Depositor
$\langle I/\sigma(I) \rangle$ <sup>1</sup>	0.90 (at 4.61Å)	Xtriage
Refinement program	PHENIX 1.15.2_3472	Depositor
R, $R_{free}$	0.259 , 0.293 0.260 , 0.294	Depositor DCC
$R_{free}$ test set	389 reflections (5.00%)	wwPDB-VP
Wilson B-factor (Å <sup>2</sup> )	334.2	Xtriage
Anisotropy	0.044	Xtriage
Bulk solvent $k_{sol}$ (e/Å <sup>3</sup> ), $B_{sol}$ (Å <sup>2</sup> )	0.25 , 277.5	EDS
L-test for twinning <sup>2</sup>	$\langle  L  \rangle = 0.37$ , $\langle L^2 \rangle = 0.20$	Xtriage
Estimated twinning fraction	No twinning to report.	Xtriage
$F_o, F_c$ correlation	0.90	EDS
Total number of atoms	7637	wwPDB-VP
Average B, all atoms (Å <sup>2</sup> )	362.0	wwPDB-VP

Xtriage's analysis on translational NCS is as follows: *The largest off-origin peak in the Patterson function is 3.21% of the height of the origin peak. No significant pseudotranslation is detected.*

<sup>1</sup>Intensities estimated from amplitudes.

<sup>2</sup>Theoretical values of  $\langle |L| \rangle$ ,  $\langle L^2 \rangle$  for acentric reflections are 0.5, 0.333 respectively for untwinned datasets, and 0.375, 0.2 for perfectly twinned datasets.

## 5 Model quality

### 5.1 Standard geometry

Bond lengths and bond angles in the following residue types are not validated in this section: RFS, NAG

The Z score for a bond length (or angle) is the number of standard deviations the observed value is removed from the expected value. A bond length (or angle) with  $|Z| > 5$  is considered an outlier worth inspection. RMSZ is the root-mean-square of all Z scores of the bond lengths (or angles).

Mol	Chain	Bond lengths		Bond angles	
		RMSZ	$\# Z  > 5$	RMSZ	$\# Z  > 5$
1	A	0.37	1/4431 (0.0%)	0.57	4/6054 (0.1%)
2	B	0.33	0/1688	0.52	0/2309
3	C	0.29	0/1700	0.51	0/2307
All	All	0.34	1/7819 (0.0%)	0.55	4/10670 (0.0%)

Chiral center outliers are detected by calculating the chiral volume of a chiral center and verifying if the center is modelled as a planar moiety or with the opposite hand. A planarity outlier is detected by checking planarity of atoms in a peptide group, atoms in a mainchain group or atoms of a sidechain that are expected to be planar.

Mol	Chain	#Chirality outliers	#Planarity outliers
1	A	0	1

All (1) bond length outliers are listed below:

Mol	Chain	Res	Type	Atoms	Z	Observed(Å)	Ideal(Å)
1	A	81	THR	C-N	6.82	1.49	1.34

All (4) bond angle outliers are listed below:

Mol	Chain	Res	Type	Atoms	Z	Observed(°)	Ideal(°)
1	A	219	THR	O-C-N	-7.93	110.01	122.70
1	A	81	THR	O-C-N	-7.45	110.79	122.70
1	A	602	GLY	N-CA-C	-5.23	100.02	113.10
1	A	597	LEU	CA-CB-CG	5.04	126.89	115.30

There are no chirality outliers.

All (1) planarity outliers are listed below:

Mol	Chain	Res	Type	Group
1	A	219	THR	Mainchain

## 5.2 Too-close contacts ⓘ

In the following table, the Non-H and H(model) columns list the number of non-hydrogen atoms and hydrogen atoms in the chain respectively. The H(added) column lists the number of hydrogen atoms added and optimized by MolProbity. The Clashes column lists the number of clashes within the asymmetric unit, whereas Symm-Clashes lists symmetry related clashes.

Mol	Chain	Non-H	H(model)	H(added)	Clashes	Symm-Clashes
1	A	4294	0	4262	114	1
2	B	1643	0	1589	33	1
3	C	1662	0	1585	38	0
4	A	14	0	13	0	0
5	A	24	0	0	6	0
All	All	7637	0	7449	181	1

The all-atom clashscore is defined as the number of clashes found per 1000 atoms (including hydrogen atoms). The all-atom clashscore for this structure is 12.

The worst 5 of 181 close contacts within the same asymmetric unit are listed below, sorted by their clash magnitude.

Atom-1	Atom-2	Interatomic distance (Å)	Clash overlap (Å)
1:A:594:ALA:O	1:A:598:ILE:HB	1.37	1.20
3:C:211:SER:HA	3:C:229:PHE:O	1.69	0.93
2:B:30:LEU:HD22	2:B:172:PRO:HD3	1.63	0.80
1:A:526:LYS:HD3	1:A:532:SER:HB2	1.64	0.80
3:C:126:ILE:O	3:C:186:GLN:NE2	2.14	0.79

All (1) symmetry-related close contacts are listed below. The label for Atom-2 includes the symmetry operator and encoded unit-cell translations to be applied.

Atom-1	Atom-2	Interatomic distance (Å)	Clash overlap (Å)
1:A:609:ILE:CD1	2:B:216:GLN:NE2[4_577]	2.01	0.19



## 5.3 Torsion angles

### 5.3.1 Protein backbone

In the following table, the Percentiles column shows the percent Ramachandran outliers of the chain as a percentile score with respect to all X-ray entries followed by that with respect to entries of similar resolution.

The Analysed column shows the number of residues for which the backbone conformation was analysed, and the total number of residues.

Mol	Chain	Analysed	Favoured	Allowed	Outliers	Percentiles	
1	A	542/549 (99%)	519 (96%)	23 (4%)	0	100	100
2	B	216/229 (94%)	207 (96%)	9 (4%)	0	100	100
3	C	212/214 (99%)	200 (94%)	12 (6%)	0	100	100
All	All	970/992 (98%)	926 (96%)	44 (4%)	0	100	100

There are no Ramachandran outliers to report.

### 5.3.2 Protein sidechains

In the following table, the Percentiles column shows the percent sidechain outliers of the chain as a percentile score with respect to all X-ray entries followed by that with respect to entries of similar resolution.

The Analysed column shows the number of residues for which the sidechain conformation was analysed, and the total number of residues.

Mol	Chain	Analysed	Rotameric	Outliers	Percentiles	
1	A	450/462 (97%)	438 (97%)	12 (3%)	44	66
2	B	190/201 (94%)	190 (100%)	0	100	100
3	C	189/190 (100%)	188 (100%)	1 (0%)	88	93
All	All	829/853 (97%)	816 (98%)	13 (2%)	62	79

5 of 13 residues with a non-rotameric sidechain are listed below:

Mol	Chain	Res	Type
1	A	437	ASP
1	A	460	LYS
1	A	604	PHE
1	A	271	TRP
1	A	563	LEU

Some sidechains can be flipped to improve hydrogen bonding and reduce clashes. All (3) such sidechains are listed below:

Mol	Chain	Res	Type
1	A	101	ASN
1	A	141	GLN
1	A	217	ASN

### 5.3.3 RNA [i](#)

There are no RNA molecules in this entry.

## 5.4 Non-standard residues in protein, DNA, RNA chains [i](#)

There are no non-standard protein/DNA/RNA residues in this entry.

## 5.5 Carbohydrates [i](#)

There are no monosaccharides in this entry.

## 5.6 Ligand geometry [i](#)

2 ligands are modelled in this entry.

In the following table, the Counts columns list the number of bonds (or angles) for which Mogul statistics could be retrieved, the number of bonds (or angles) that are observed in the model and the number of bonds (or angles) that are defined in the Chemical Component Dictionary. The Link column lists molecule types, if any, to which the group is linked. The Z score for a bond length (or angle) is the number of standard deviations the observed value is removed from the expected value. A bond length (or angle) with  $|Z| > 2$  is considered an outlier worth inspection. RMSZ is the root-mean-square of all Z scores of the bond lengths (or angles).

Mol	Type	Chain	Res	Link	Bond lengths			Bond angles		
					Counts	RMSZ	$\# Z  > 2$	Counts	RMSZ	$\# Z  > 2$
5	RFS	A	703	-	26,27,27	2.13	9 (34%)	33,37,37	1.85	8 (24%)
4	NAG	A	701	1	14,14,15	0.27	0	17,19,21	0.61	0

In the following table, the Chirals column lists the number of chiral outliers, the number of chiral centers analysed, the number of these observed in the model and the number defined in the Chemical Component Dictionary. Similar counts are reported in the Torsion and Rings columns. '-' means no outliers of that kind were identified.

Mol	Type	Chain	Res	Link	Chirals	Torsions	Rings
5	RFS	A	703	-	-	6/9/26/26	0/4/4/4
4	NAG	A	701	1	-	2/6/23/26	0/1/1/1

The worst 5 of 9 bond length outliers are listed below:

Mol	Chain	Res	Type	Atoms	Z	Observed(Å)	Ideal(Å)
5	A	703	RFS	C07-C06	5.90	1.60	1.51
5	A	703	RFS	C08-C07	4.34	1.46	1.39
5	A	703	RFS	C17-C16	3.08	1.44	1.38
5	A	703	RFS	C01-C06	-2.96	1.49	1.53
5	A	703	RFS	C09-C08	-2.78	1.33	1.38

The worst 5 of 8 bond angle outliers are listed below:

Mol	Chain	Res	Type	Atoms	Z	Observed(°)	Ideal(°)
5	A	703	RFS	C01-C06-C05	5.97	116.55	109.62
5	A	703	RFS	C04-C05-C06	4.16	116.47	110.05
5	A	703	RFS	C01-C06-C07	-3.53	106.09	112.57
5	A	703	RFS	C07-C06-C05	-2.85	108.15	113.69
5	A	703	RFS	O24-C18-C17	2.72	131.49	127.85

There are no chirality outliers.

5 of 8 torsion outliers are listed below:

Mol	Chain	Res	Type	Atoms
5	A	703	RFS	C04-C05-C14-O15
5	A	703	RFS	C06-C05-C14-O15
5	A	703	RFS	C21-C16-O15-C14
5	A	703	RFS	C17-C16-O15-C14
4	A	701	NAG	O5-C5-C6-O6

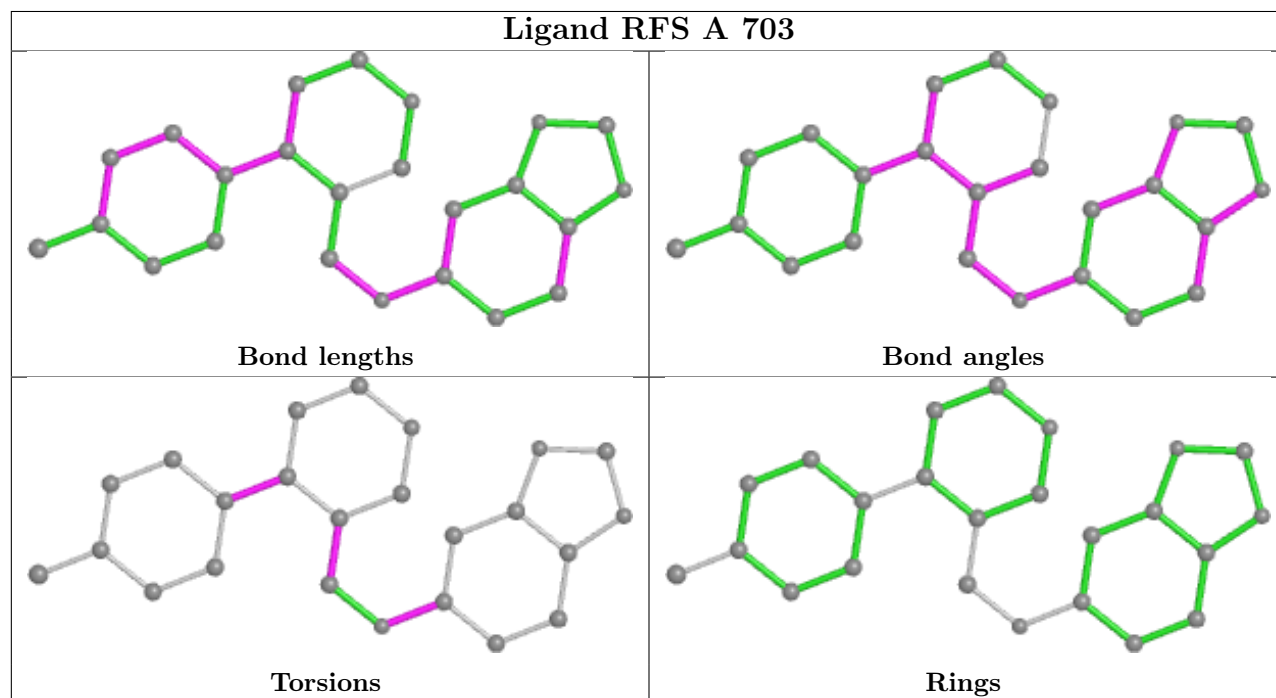
There are no ring outliers.

1 monomer is involved in 6 short contacts:

Mol	Chain	Res	Type	Clashes	Symm-Clashes
5	A	703	RFS	6	0

The following is a two-dimensional graphical depiction of Mogul quality analysis of bond lengths, bond angles, torsion angles, and ring geometry for all instances of the Ligand of Interest. In addition, ligands with molecular weight > 250 and outliers as shown on the validation Tables will also be included. For torsion angles, if less than 5% of the Mogul distribution of torsion angles is within 10 degrees of the torsion angle in question, then that torsion angle is considered an outlier.

Any bond that is central to one or more torsion angles identified as an outlier by Mogul will be highlighted in the graph. For rings, the root-mean-square deviation (RMSD) between the ring in question and similar rings identified by Mogul is calculated over all ring torsion angles. If the average RMSD is greater than 60 degrees and the minimal RMSD between the ring in question and any Mogul-identified rings is also greater than 60 degrees, then that ring is considered an outlier. The outliers are highlighted in purple. The color gray indicates Mogul did not find sufficient equivalents in the CSD to analyse the geometry.



## 5.7 Other polymers [i](#)

There are no such residues in this entry.

## 5.8 Polymer linkage issues [i](#)

There are no chain breaks in this entry.

## 6 Fit of model and data

### 6.1 Protein, DNA and RNA chains

Unable to reproduce the depositors R factor - this section is therefore empty.

### 6.2 Non-standard residues in protein, DNA, RNA chains

Unable to reproduce the depositors R factor - this section is therefore empty.

### 6.3 Carbohydrates

Unable to reproduce the depositors R factor - this section is therefore empty.

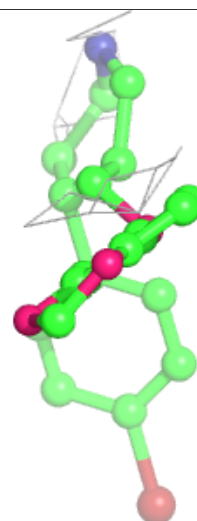
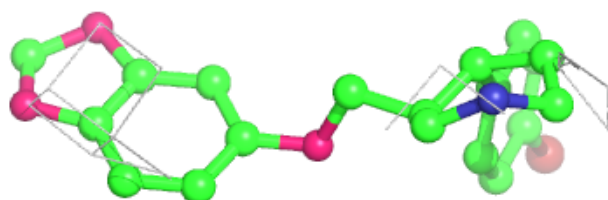
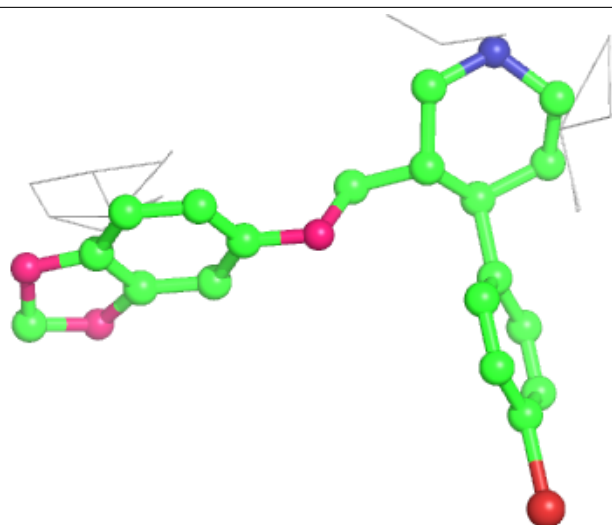
### 6.4 Ligands

Unable to reproduce the depositors R factor - this section is therefore empty.

The following is a graphical depiction of the model fit to experimental electron density of all instances of the Ligand of Interest. In addition, ligands with molecular weight > 250 and outliers as shown on the geometry validation Tables will also be included. Each fit is shown from different orientation to approximate a three-dimensional view.

**Electron density around RFS A 703:**

$2mF_o-DF_c$  (at 0.7 rmsd) in gray  
 $mF_o-DF_c$  (at 3 rmsd) in purple (negative)  
and green (positive)



## 6.5 Other polymers [i](#)

Unable to reproduce the depositor's R factor - this section is therefore empty.