



# Full wwPDB X-ray Structure Validation Report ⓘ

May 28, 2020 – 08:51 pm BST

PDB ID : 1W31  
Title : YEAST 5-AMINOLAEVULINIC ACID DEHYDRATASE 5-HYDROXYLAEVULINIC ACID COMPLEX  
Authors : Erskine, P.T.; Coates, L.; Newbold, R.; Brindley, A.A.; Stauffer, F.; Beaven, G.D.E.; Gill, R.; Wood, S.P.; Warren, M.J.; Cooper, J.B.; Shoolingin-Jordan, P.M.; Neier, R.  
Deposited on : 2004-07-11  
Resolution : 1.90 Å(reported)

This is a Full wwPDB X-ray Structure Validation Report for a publicly released PDB entry.

We welcome your comments at [validation@mail.wwpdb.org](mailto:validation@mail.wwpdb.org)

A user guide is available at

<https://www.wwpdb.org/validation/2017/XrayValidationReportHelp>

with specific help available everywhere you see the ⓘ symbol.

---

The following versions of software and data (see [references ⓘ](#)) were used in the production of this report:

MolProbity	:	4.02b-467
Mogul	:	1.8.5 (274361), CSD as541be (2020)
Xtriage (Phenix)	:	1.13
EDS	:	2.11
Percentile statistics	:	20191225.v01 (using entries in the PDB archive December 25th 2019)
Refmac	:	5.8.0158
CCP4	:	7.0.044 (Gargrove)
Ideal geometry (proteins)	:	Engh & Huber (2001)
Ideal geometry (DNA, RNA)	:	Parkinson et al. (1996)
Validation Pipeline (wwPDB-VP)	:	2.11

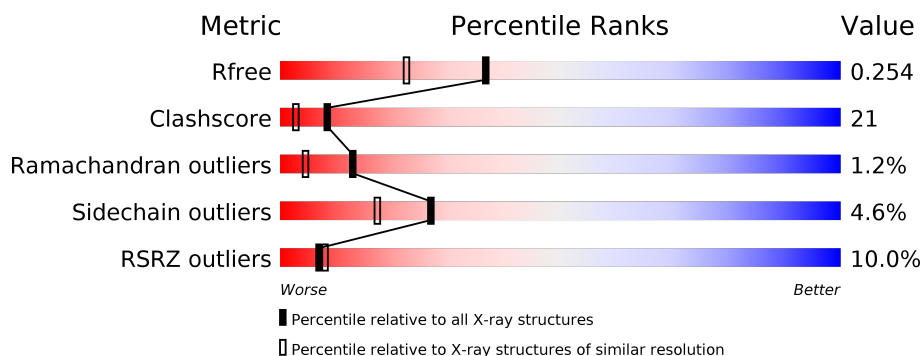
# 1 Overall quality at a glance

The following experimental techniques were used to determine the structure:

*X-RAY DIFFRACTION*

The reported resolution of this entry is 1.90 Å.

Percentile scores (ranging between 0-100) for global validation metrics of the entry are shown in the following graphic. The table shows the number of entries on which the scores are based.



Metric	Whole archive (#Entries)	Similar resolution (#Entries, resolution range(Å))
$R_{free}$	130704	6207 (1.90-1.90)
Clashscore	141614	6847 (1.90-1.90)
Ramachandran outliers	138981	6760 (1.90-1.90)
Sidechain outliers	138945	6760 (1.90-1.90)
RSRZ outliers	127900	6082 (1.90-1.90)

The table below summarises the geometric issues observed across the polymeric chains and their fit to the electron density. The red, orange, yellow and green segments on the lower bar indicate the fraction of residues that contain outliers for  $\geq 3$ , 2, 1 and 0 types of geometric quality criteria respectively. A grey segment represents the fraction of residues that are not modelled. The numeric value for each fraction is indicated below the corresponding segment, with a dot representing fractions  $\leq 5\%$ . The upper red bar (where present) indicates the fraction of residues that have poor fit to the electron density. The numeric value is given above the bar.

Mol	Chain	Length	Quality of chain
1	A	342	

## 2 Entry composition [i](#)

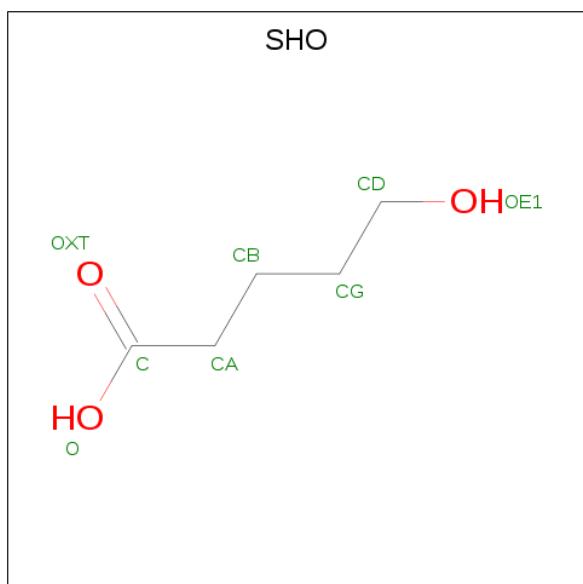
There are 4 unique types of molecules in this entry. The entry contains 2960 atoms, of which 0 are hydrogens and 0 are deuteriums.

In the tables below, the ZeroOcc column contains the number of atoms modelled with zero occupancy, the AltConf column contains the number of residues with at least one atom in alternate conformation and the Trace column contains the number of residues modelled with at most 2 atoms.

- Molecule 1 is a protein called DELTA-AMINOLEVULINIC ACID DEHYDRATASE.

Mol	Chain	Residues	Atoms					ZeroOcc	AltConf	Trace
			Total	C	N	O	S			
1	A	340	2674	1701	466	492	15	0	4	0

- Molecule 2 is 5-HYDROXYLAEVULINIC ACID (three-letter code: SHO) (formula: C<sub>5</sub>H<sub>10</sub>O<sub>3</sub>).



Mol	Chain	Residues	Atoms			ZeroOcc	AltConf
			Total	C	O		
2	A	1	16	10	6	0	1

- Molecule 3 is ZINC ION (three-letter code: ZN) (formula: Zn).

Mol	Chain	Residues	Atoms		ZeroOcc	AltConf
			Total	Zn		
3	A	1	1	1	0	0

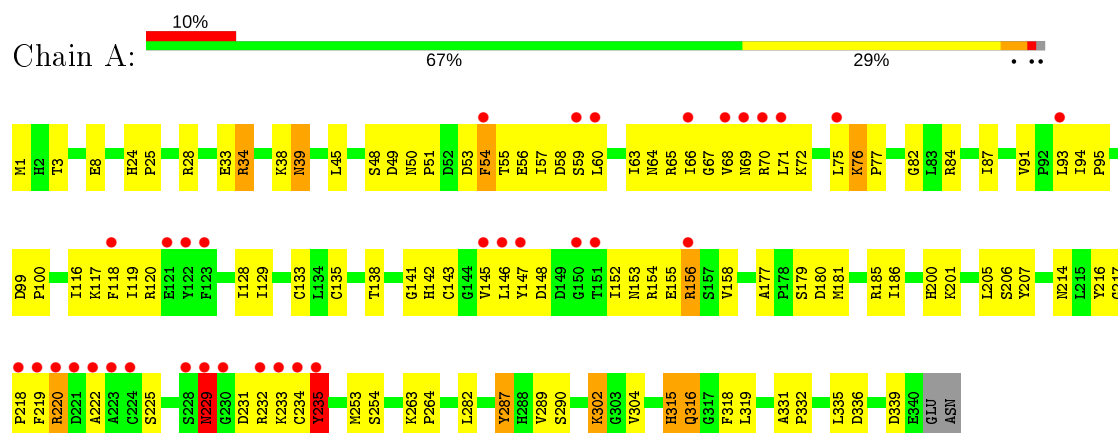
- Molecule 4 is water.

Mol	Chain	Residues	Atoms		ZeroOcc	AltConf
4	A	269	Total 269	O 269	0	0

### 3 Residue-property plots [i](#)

These plots are drawn for all protein, RNA and DNA chains in the entry. The first graphic for a chain summarises the proportions of the various outlier classes displayed in the second graphic. The second graphic shows the sequence view annotated by issues in geometry and electron density. Residues are color-coded according to the number of geometric quality criteria for which they contain at least one outlier: green = 0, yellow = 1, orange = 2 and red = 3 or more. A red dot above a residue indicates a poor fit to the electron density ( $RSRZ > 2$ ). Stretches of 2 or more consecutive residues without any outlier are shown as a green connector. Residues present in the sample, but not in the model, are shown in grey.

#### • Molecule 1: DELTA-AMINOLEVULINIC ACID DEHYDRATASE



## 4 Data and refinement statistics

Property	Value	Source
Space group	I 4 2 2	Depositor
Cell constants a, b, c, $\alpha$ , $\beta$ , $\gamma$	102.57Å 102.57Å 168.38Å 90.00° 90.00° 90.00°	Depositor
Resolution (Å)	44.28 – 1.90 44.26 – 1.90	Depositor EDS
% Data completeness (in resolution range)	100.0 (44.28-1.90) 100.0 (44.26-1.90)	Depositor EDS
$R_{merge}$	0.06	Depositor
$R_{sym}$	(Not available)	Depositor
$\langle I/\sigma(I) \rangle$ <sup>1</sup>	4.46 (at 1.89Å)	Xtriage
Refinement program	RESTRAIN	Depositor
R, $R_{free}$	0.190 , 0.249 0.209 , 0.254	Depositor DCC
$R_{free}$ test set	1789 reflections (5.01%)	wwPDB-VP
Wilson B-factor (Å <sup>2</sup> )	33.8	Xtriage
Anisotropy	0.407	Xtriage
Bulk solvent $k_{sol}$ (e/Å <sup>3</sup> ), $B_{sol}$ (Å <sup>2</sup> )	0.35 , 130.4	EDS
L-test for twinning <sup>2</sup>	$\langle  L  \rangle = 0.50$ , $\langle L^2 \rangle = 0.33$	Xtriage
Estimated twinning fraction	No twinning to report.	Xtriage
$F_o, F_c$ correlation	0.96	EDS
Total number of atoms	2960	wwPDB-VP
Average B, all atoms (Å <sup>2</sup> )	49.0	wwPDB-VP

Xtriage's analysis on translational NCS is as follows: *The largest off-origin peak in the Patterson function is 3.35% of the height of the origin peak. No significant pseudotranslation is detected.*

<sup>1</sup>Intensities estimated from amplitudes.

<sup>2</sup>Theoretical values of  $\langle |L| \rangle$ ,  $\langle L^2 \rangle$  for acentric reflections are 0.5, 0.333 respectively for untwinned datasets, and 0.375, 0.2 for perfectly twinned datasets.

## 5 Model quality

### 5.1 Standard geometry

Bond lengths and bond angles in the following residue types are not validated in this section: ZN, SHO

The Z score for a bond length (or angle) is the number of standard deviations the observed value is removed from the expected value. A bond length (or angle) with  $|Z| > 5$  is considered an outlier worth inspection. RMSZ is the root-mean-square of all Z scores of the bond lengths (or angles).

Mol	Chain	Bond lengths		Bond angles	
		RMSZ	$\# Z  > 5$	RMSZ	$\# Z  > 5$
1	A	0.32	0/2750	0.60	4/3729 (0.1%)

Chiral center outliers are detected by calculating the chiral volume of a chiral center and verifying if the center is modelled as a planar moiety or with the opposite hand. A planarity outlier is detected by checking planarity of atoms in a peptide group, atoms in a mainchain group or atoms of a sidechain that are expected to be planar.

Mol	Chain	#Chirality outliers	#Planarity outliers
1	A	0	2

There are no bond length outliers.

All (4) bond angle outliers are listed below:

Mol	Chain	Res	Type	Atoms	Z	Observed( $^{\circ}$ )	Ideal( $^{\circ}$ )
1	A	315	HIS	O-C-N	7.08	134.03	122.70
1	A	315	HIS	C-N-CA	-5.07	109.02	121.70
1	A	316[A]	GLN	O-C-N	-5.05	114.62	123.20
1	A	316[B]	GLN	O-C-N	-5.05	114.62	123.20

There are no chirality outliers.

All (2) planarity outliers are listed below:

Mol	Chain	Res	Type	Group
1	A	235[B]	TYR	Mainchain
1	A	316[A]	GLN	Mainchain

## 5.2 Too-close contacts ⓘ

In the following table, the Non-H and H(model) columns list the number of non-hydrogen atoms and hydrogen atoms in the chain respectively. The H(added) column lists the number of hydrogen atoms added and optimized by MolProbity. The Clashes column lists the number of clashes within the asymmetric unit, whereas Symm-Clashes lists symmetry related clashes.

Mol	Chain	Non-H	H(model)	H(added)	Clashes	Symm-Clashes
1	A	2674	0	2652	112	1
2	A	16	0	14	4	0
3	A	1	0	0	0	0
4	A	269	0	0	8	2
All	All	2960	0	2666	112	3

The all-atom clashscore is defined as the number of clashes found per 1000 atoms (including hydrogen atoms). The all-atom clashscore for this structure is 21.

All (112) close contacts within the same asymmetric unit are listed below, sorted by their clash magnitude.

Atom-1	Atom-2	Interatomic distance (Å)	Clash overlap (Å)
1:A:218:PRO:HB2	1:A:290:SER:HB2	1.35	1.07
1:A:302:LYS:O	1:A:302:LYS:HG3	1.55	1.04
1:A:146:LEU:HD23	1:A:152:ILE:HD13	1.42	0.99
1:A:99:ASP:HB2	1:A:100:PRO:CD	1.97	0.95
1:A:235[A]:TYR:N	1:A:235[A]:TYR:CD1	2.41	0.85
1:A:235[A]:TYR:HD1	1:A:235[A]:TYR:N	1.75	0.85
1:A:54:PHE:O	1:A:54:PHE:HD2	1.65	0.78
1:A:263[B]:LYS:HE3	2:A:363[B]:SHO:HAC2	1.67	0.77
1:A:99:ASP:HB2	1:A:100:PRO:HD3	1.64	0.77
1:A:145:VAL:HG11	1:A:156[C]:ARG:HG2	1.66	0.76
1:A:66:ILE:HD12	1:A:66:ILE:N	2.02	0.73
1:A:180:ASP:O	1:A:181:MET:HB2	1.90	0.72
1:A:133:CYS:SG	1:A:143:CYS:HB3	2.30	0.72
1:A:99:ASP:HB2	1:A:100:PRO:HD2	1.73	0.70
1:A:59:SER:OG	1:A:218:PRO:HA	1.91	0.70
1:A:302:LYS:HE2	4:A:2246:HOH:O	1.92	0.69
1:A:59:SER:CB	1:A:218:PRO:HA	2.23	0.68
1:A:302:LYS:HG2	1:A:304:VAL:HG23	1.77	0.67
1:A:54:PHE:O	1:A:54:PHE:CD2	2.48	0.67
1:A:65:ARG:HH11	1:A:65:ARG:HG2	1.62	0.65
1:A:154:ARG:O	1:A:158:VAL:HG22	1.95	0.65
1:A:51:PRO:HB2	1:A:69:ASN:ND2	2.14	0.63
1:A:59:SER:HB2	1:A:218:PRO:HA	1.82	0.61

*Continued on next page...*



*Continued from previous page...*

Atom-1	Atom-2	Interatomic distance (Å)	Clash overlap (Å)
1:A:99:ASP:CB	1:A:100:PRO:CD	2.68	0.61
1:A:66:ILE:HG23	1:A:70:ARG:HB2	1.81	0.61
1:A:179:SER:HB3	1:A:207:TYR:CE1	2.36	0.60
1:A:39:ASN:HD22	1:A:39:ASN:C	2.05	0.60
1:A:135:CYS:HA	1:A:142:HIS:O	2.00	0.60
1:A:34:ARG:HG2	1:A:319:LEU:HB3	1.84	0.60
1:A:49:ASP:CG	1:A:94:ILE:HD12	2.22	0.60
1:A:218:PRO:HB2	1:A:290:SER:CB	2.22	0.60
1:A:57:ILE:HG12	1:A:222:ALA:CB	2.32	0.59
1:A:220:ARG:HD2	1:A:225:SER:O	2.03	0.58
1:A:57:ILE:HD12	1:A:64:ASN:HA	1.86	0.58
1:A:116:ILE:O	1:A:120:ARG:HG2	2.06	0.56
1:A:232:ARG:HD3	1:A:235[A]:TYR:OH	2.05	0.56
1:A:118:PHE:CD2	1:A:118:PHE:C	2.79	0.56
1:A:120:ARG:HD3	1:A:128:ILE:HD12	1.88	0.56
1:A:231:ASP:HB3	1:A:233:LYS:HG3	1.89	0.55
1:A:218:PRO:CB	1:A:290:SER:HB2	2.24	0.55
1:A:146:LEU:HD23	1:A:152:ILE:CD1	2.28	0.55
1:A:50:ASN:O	1:A:53:ASP:HB2	2.07	0.55
1:A:148:ASP:HB2	4:A:2165:HOH:O	2.06	0.55
1:A:66:ILE:HG22	1:A:67:GLY:O	2.06	0.55
1:A:155:GLU:HB2	4:A:2170:HOH:O	2.07	0.54
1:A:57:ILE:HG12	1:A:222:ALA:HB2	1.88	0.54
1:A:216:TYR:HE1	1:A:263[B]:LYS:HE2	1.73	0.54
1:A:72:LYS:HB2	1:A:118:PHE:HZ	1.73	0.53
1:A:263[B]:LYS:CE	2:A:363[B]:SHO:HAC2	2.38	0.53
1:A:70:ARG:HA	4:A:2096:HOH:O	2.08	0.53
1:A:33:GLU:HB2	4:A:2065:HOH:O	2.08	0.53
1:A:336:ASP:O	1:A:339:ASP:HB2	2.09	0.53
1:A:66:ILE:CG2	1:A:70:ARG:HB2	2.39	0.53
1:A:146:LEU:CD2	1:A:152:ILE:HD13	2.28	0.52
1:A:331:ALA:HB3	1:A:332:PRO:HD3	1.91	0.52
1:A:38:LYS:HG2	1:A:335:LEU:HD23	1.90	0.52
1:A:56:GLU:HA	1:A:64:ASN:ND2	2.24	0.52
1:A:200:HIS:CD2	1:A:201:LYS:HG2	2.44	0.52
1:A:120:ARG:CD	1:A:128:ILE:HD12	2.41	0.51
1:A:24:HIS:CG	1:A:25:PRO:HD2	2.47	0.50
1:A:287:TYR:CZ	2:A:363[A]:SHO:HBC1	2.46	0.50
1:A:49:ASP:CG	1:A:93:LEU:H	2.14	0.49
1:A:8:GLU:HB2	4:A:2027:HOH:O	2.13	0.49
1:A:68:VAL:HG23	4:A:2082:HOH:O	2.12	0.49

*Continued on next page...*

*Continued from previous page...*

Atom-1	Atom-2	Interatomic distance (Å)	Clash overlap (Å)
1:A:302:LYS:CG	1:A:304:VAL:HG23	2.42	0.49
1:A:57:ILE:HG12	1:A:222:ALA:HA	1.95	0.49
1:A:153:ASN:ND2	1:A:156[A]:ARG:HB2	2.28	0.49
1:A:34:ARG:CZ	1:A:34:ARG:CB	2.91	0.49
1:A:177:ALA:HA	1:A:205:LEU:O	2.13	0.48
1:A:59:SER:HB2	1:A:218:PRO:CA	2.43	0.48
1:A:57:ILE:HD12	1:A:64:ASN:CA	2.44	0.48
1:A:253:MET:HG3	1:A:282:LEU:HD11	1.96	0.48
1:A:55:THR:O	1:A:64:ASN:HB3	2.13	0.48
1:A:66:ILE:HG22	1:A:67:GLY:N	2.30	0.47
1:A:48:SER:HB2	1:A:65:ARG:CG	2.44	0.46
1:A:65:ARG:HD3	1:A:91:VAL:HG11	1.97	0.46
1:A:59:SER:O	1:A:218:PRO:HB3	2.16	0.46
1:A:57:ILE:HG21	1:A:60:LEU:HB2	1.98	0.46
1:A:51:PRO:O	1:A:69:ASN:HB2	2.16	0.45
1:A:57:ILE:HB	1:A:60:LEU:HB3	1.99	0.45
1:A:57:ILE:CG2	1:A:60:LEU:HB2	2.47	0.45
1:A:49:ASP:OD1	1:A:94:ILE:HD12	2.16	0.45
1:A:186:ILE:CD1	1:A:206:SER:HB2	2.47	0.45
1:A:143:CYS:SG	1:A:232:ARG:NH1	2.90	0.45
1:A:219:PHE:HB2	2:A:363[A]:SHO:OXT	2.17	0.45
1:A:1:MET:O	1:A:3:THR:HG23	2.18	0.44
1:A:87:ILE:HA	1:A:129:ILE:O	2.17	0.44
1:A:24:HIS:CD2	1:A:25:PRO:HD2	2.52	0.44
1:A:99:ASP:O	1:A:138:THR:HA	2.16	0.44
1:A:147:TYR:CE2	1:A:153:ASN:HA	2.53	0.44
1:A:315:HIS:HA	1:A:318:PHE:CD1	2.52	0.43
1:A:216:TYR:HE1	1:A:263[A]:LYS:HE2	1.81	0.43
1:A:229:ASN:CG	1:A:229:ASN:O	2.56	0.43
1:A:141:GLY:HA2	4:A:2159:HOH:O	2.18	0.43
1:A:119:ILE:HG22	1:A:128:ILE:HD11	2.01	0.43
1:A:45:LEU:HD11	1:A:75:LEU:HD21	2.01	0.43
1:A:216:TYR:CE1	1:A:263[B]:LYS:HE2	2.53	0.43
1:A:232:ARG:C	1:A:234:CYS:H	2.22	0.42
1:A:65:ARG:HH11	1:A:65:ARG:CG	2.30	0.42
1:A:54:PHE:CD2	1:A:54:PHE:C	2.93	0.42
1:A:82:GLY:O	1:A:84:ARG:HG2	2.19	0.42
1:A:186:ILE:HD11	1:A:206:SER:HB2	2.02	0.42
1:A:94:ILE:HA	1:A:95:PRO:HD3	1.88	0.42
1:A:57:ILE:HG12	1:A:222:ALA:CA	2.49	0.41
1:A:71:LEU:HD23	1:A:71:LEU:HA	1.82	0.41

*Continued on next page...*

Continued from previous page...

Atom-1	Atom-2	Interatomic distance (Å)	Clash overlap (Å)
1:A:152:ILE:CG2	1:A:153:ASN:N	2.84	0.41
1:A:56:GLU:HA	1:A:64:ASN:HD22	1.86	0.41
1:A:76:LYS:HB3	1:A:77:PRO:HD3	2.02	0.40
1:A:60:LEU:HG	1:A:63:ILE:HB	2.02	0.40

All (3) symmetry-related close contacts are listed below. The label for Atom-2 includes the symmetry operator and encoded unit-cell translations to be applied.

Atom-1	Atom-2	Interatomic distance (Å)	Clash overlap (Å)
4:A:2066:HOH:O	4:A:2260:HOH:O[5_555]	1.79	0.41
1:A:28:ARG:NH2	1:A:233:LYS:O[7_555]	2.02	0.18
4:A:2064:HOH:O	4:A:2233:HOH:O[5_555]	2.16	0.04

## 5.3 Torsion angles [i](#)

### 5.3.1 Protein backbone [i](#)

In the following table, the Percentiles column shows the percent Ramachandran outliers of the chain as a percentile score with respect to all X-ray entries followed by that with respect to entries of similar resolution.

The Analysed column shows the number of residues for which the backbone conformation was analysed, and the total number of residues.

Mol	Chain	Analysed	Favoured	Allowed	Outliers	Percentiles
1	A	343/342 (100%)	322 (94%)	17 (5%)	4 (1%)	13 4

All (4) Ramachandran outliers are listed below:

Mol	Chain	Res	Type
1	A	54	PHE
1	A	58	ASP
1	A	217	GLY
1	A	229	ASN

### 5.3.2 Protein sidechains [i](#)

In the following table, the Percentiles column shows the percent sidechain outliers of the chain as a percentile score with respect to all X-ray entries followed by that with respect to entries of similar

resolution.

The Analysed column shows the number of residues for which the sidechain conformation was analysed, and the total number of residues.

Mol	Chain	Analysed	Rotameric	Outliers	Percentiles	
1	A	285/282 (101%)	269 (94%)	16 (6%)	21	11

All (16) residues with a non-rotameric sidechain are listed below:

Mol	Chain	Res	Type
1	A	34	ARG
1	A	39	ASN
1	A	76	LYS
1	A	117	LYS
1	A	156[A]	ARG
1	A	156[B]	ARG
1	A	156[C]	ARG
1	A	185	ARG
1	A	214	ASN
1	A	220	ARG
1	A	229	ASN
1	A	235[A]	TYR
1	A	235[B]	TYR
1	A	254	SER
1	A	287	TYR
1	A	302	LYS

Some sidechains can be flipped to improve hydrogen bonding and reduce clashes. All (6) such sidechains are listed below:

Mol	Chain	Res	Type
1	A	39	ASN
1	A	64	ASN
1	A	69	ASN
1	A	142	HIS
1	A	197	ASN
1	A	214	ASN

### 5.3.3 RNA ⓘ

There are no RNA molecules in this entry.

## 5.4 Non-standard residues in protein, DNA, RNA chains [i](#)

There are no non-standard protein/DNA/RNA residues in this entry.

## 5.5 Carbohydrates [i](#)

There are no carbohydrates in this entry.

## 5.6 Ligand geometry [i](#)

Of 3 ligands modelled in this entry, 1 is monoatomic - leaving 2 for Mogul analysis.

In the following table, the Counts columns list the number of bonds (or angles) for which Mogul statistics could be retrieved, the number of bonds (or angles) that are observed in the model and the number of bonds (or angles) that are defined in the Chemical Component Dictionary. The Link column lists molecule types, if any, to which the group is linked. The Z score for a bond length (or angle) is the number of standard deviations the observed value is removed from the expected value. A bond length (or angle) with  $|Z| > 2$  is considered an outlier worth inspection. RMSZ is the root-mean-square of all Z scores of the bond lengths (or angles).

Mol	Type	Chain	Res	Link	Bond lengths			Bond angles		
					Counts	RMSZ	$\# Z  > 2$	Counts	RMSZ	$\# Z  > 2$
2	SHO	A	363[A]	1	4,7,7	0.14	0	3,7,7	0.50	0
2	SHO	A	363[B]	1	4,7,7	0.14	0	3,7,7	0.46	0

In the following table, the Chirals column lists the number of chiral outliers, the number of chiral centers analysed, the number of these observed in the model and the number defined in the Chemical Component Dictionary. Similar counts are reported in the Torsion and Rings columns. '-' means no outliers of that kind were identified.

Mol	Type	Chain	Res	Link	Chirals	Torsions	Rings
2	SHO	A	363[A]	1	-	2/3/5/5	-
2	SHO	A	363[B]	1	-	2/3/5/5	-

There are no bond length outliers.

There are no bond angle outliers.

There are no chirality outliers.

All (4) torsion outliers are listed below:

Mol	Chain	Res	Type	Atoms
2	A	363[B]	SHO	CA-CB-CG-CD
2	A	363[A]	SHO	CA-CB-CG-CD

*Continued on next page...*

*Continued from previous page...*

Mol	Chain	Res	Type	Atoms
2	A	363[A]	SHO	OE1-CD-CG-CB
2	A	363[B]	SHO	OE1-CD-CG-CB

There are no ring outliers.

2 monomers are involved in 4 short contacts:

Mol	Chain	Res	Type	Clashes	Symm-Clashes
2	A	363[A]	SHO	2	0
2	A	363[B]	SHO	2	0

## 5.7 Other polymers [i](#)

There are no such residues in this entry.

## 5.8 Polymer linkage issues [i](#)

There are no chain breaks in this entry.

## 6 Fit of model and data ⓘ

### 6.1 Protein, DNA and RNA chains ⓘ

In the following table, the column labelled ‘#RSRZ> 2’ contains the number (and percentage) of RSRZ outliers, followed by percent RSRZ outliers for the chain as percentile scores relative to all X-ray entries and entries of similar resolution. The OWAB column contains the minimum, median, 95<sup>th</sup> percentile and maximum values of the occupancy-weighted average B-factor per residue. The column labelled ‘Q< 0.9’ lists the number of (and percentage) of residues with an average occupancy less than 0.9.

Mol	Chain	Analysed	<RSRZ>	#RSRZ>2	OWAB(Å <sup>2</sup> )	Q<0.9
1	A	340/342 (99%)	0.55	34 (10%) 7 8	20, 39, 104, 184	0

All (34) RSRZ outliers are listed below:

Mol	Chain	Res	Type	RSRZ
1	A	230	GLY	9.3
1	A	228	SER	8.9
1	A	222	ALA	7.2
1	A	235[A]	TYR	5.7
1	A	229	ASN	5.3
1	A	60	LEU	4.6
1	A	221	ASP	4.3
1	A	234	CYS	3.8
1	A	218	PRO	3.7
1	A	219	PHE	3.6
1	A	122	TYR	3.6
1	A	59	SER	3.4
1	A	233	LYS	3.3
1	A	118	PHE	3.2
1	A	123	PHE	3.2
1	A	69	ASN	3.0
1	A	150	GLY	3.0
1	A	146	LEU	2.9
1	A	223	ALA	2.8
1	A	220	ARG	2.7
1	A	54	PHE	2.6
1	A	66	ILE	2.5
1	A	147	TYR	2.4
1	A	75	LEU	2.4
1	A	224	CYS	2.4
1	A	151	THR	2.4
1	A	232	ARG	2.3

*Continued on next page...*

*Continued from previous page...*

Mol	Chain	Res	Type	RSRZ
1	A	93	LEU	2.2
1	A	145	VAL	2.2
1	A	71	LEU	2.2
1	A	156[A]	ARG	2.2
1	A	68	VAL	2.2
1	A	70	ARG	2.1
1	A	121	GLU	2.0

## 6.2 Non-standard residues in protein, DNA, RNA chains [i](#)

There are no non-standard protein/DNA/RNA residues in this entry.

## 6.3 Carbohydrates [i](#)

There are no carbohydrates in this entry.

## 6.4 Ligands [i](#)

In the following table, the Atoms column lists the number of modelled atoms in the group and the number defined in the chemical component dictionary. The B-factors column lists the minimum, median, 95<sup>th</sup> percentile and maximum values of B factors of atoms in the group. The column labelled 'Q< 0.9' lists the number of atoms with occupancy less than 0.9.

Mol	Type	Chain	Res	Atoms	RSCC	RSR	B-factors( $\text{\AA}^2$ )	Q<0.9
2	SHO	A	363[A]	8/8	0.77	0.29	34,37,56,57	8
2	SHO	A	363[B]	8/8	0.77	0.29	37,41,50,64	8
3	ZN	A	400	1/1	0.92	0.08	53,53,53,53	0

## 6.5 Other polymers [i](#)

There are no such residues in this entry.