



Full wwPDB X-ray Structure Validation Report ⓘ

Aug 30, 2020 – 10:53 AM BST

PDB ID : 4W5O
Title : The Crystal Structure of Human Argonaute2 Bound to a Guide and Target
RNA Containing Seed Pairing from 2-9
Authors : Schirle, N.T.; MacRae, I.J.
Deposited on : 2014-08-18
Resolution : 1.80 Å(reported)

This is a Full wwPDB X-ray Structure Validation Report for a publicly released PDB entry.

We welcome your comments at validation@mail.wwpdb.org

A user guide is available at

<https://www.wwpdb.org/validation/2017/XrayValidationReportHelp>

with specific help available everywhere you see the ⓘ symbol.

The following versions of software and data (see [references ⓘ](#)) were used in the production of this report:

MolProbity : 4.02b-467
Mogul : 1.8.5 (274361), CSD as541be (2020)
Xtriage (Phenix) : 1.13
EDS : 2.13
Percentile statistics : 20191225.v01 (using entries in the PDB archive December 25th 2019)
Refmac : 5.8.0158
CCP4 : 7.0.044 (Gargrove)
Ideal geometry (proteins) : Engh & Huber (2001)
Ideal geometry (DNA, RNA) : Parkinson et al. (1996)
Validation Pipeline (wwPDB-VP) : 2.13

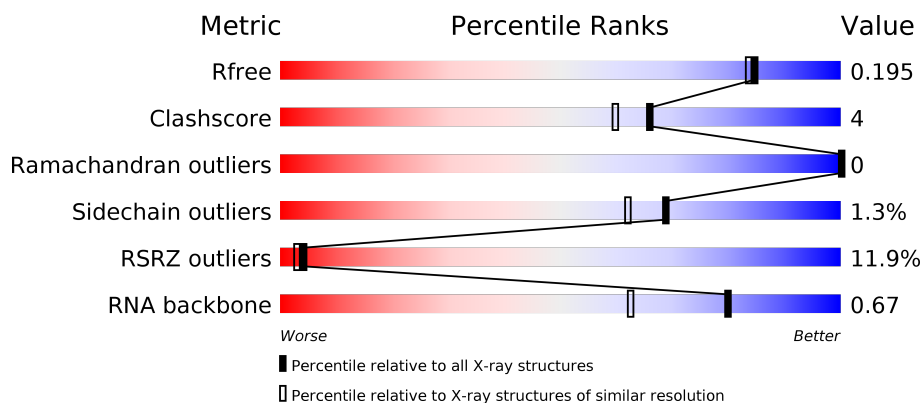
1 Overall quality at a glance

The following experimental techniques were used to determine the structure:

X-RAY DIFFRACTION

The reported resolution of this entry is 1.80 Å.

Percentile scores (ranging between 0-100) for global validation metrics of the entry are shown in the following graphic. The table shows the number of entries on which the scores are based.



Metric	Whole archive (#Entries)	Similar resolution (#Entries, resolution range(Å))
R_{free}	130704	5950 (1.80-1.80)
Clashscore	141614	6793 (1.80-1.80)
Ramachandran outliers	138981	6697 (1.80-1.80)
Sidechain outliers	138945	6696 (1.80-1.80)
RSRZ outliers	127900	5850 (1.80-1.80)
RNA backbone	3102	1060 (2.40-1.20)

The table below summarises the geometric issues observed across the polymeric chains and their fit to the electron density. The red, orange, yellow and green segments on the lower bar indicate the fraction of residues that contain outliers for ≥ 3 , 2, 1 and 0 types of geometric quality criteria respectively. A grey segment represents the fraction of residues that are not modelled. The numeric value for each fraction is indicated below the corresponding segment, with a dot representing fractions $\leq 5\%$. The upper red bar (where present) indicates the fraction of residues that have poor fit to the electron density. The numeric value is given above the bar.

Mol	Chain	Length	Quality of chain
1	A	859	 11% 85% 8% • 7%
2	B	21	 5% 71% 19% 5% 5%
3	D	11	 91% 9%

The following table lists non-polymeric compounds, carbohydrate monomers and non-standard

residues in protein, DNA, RNA chains that are outliers for geometric or electron-density-fit criteria:

Mol	Type	Chain	Res	Chirality	Geometry	Clashes	Electron density
7	PO4	B	102	-	-	-	X

2 Entry composition

There are 8 unique types of molecules in this entry. The entry contains 7491 atoms, of which 0 are hydrogens and 0 are deuteriums.

In the tables below, the ZeroOcc column contains the number of atoms modelled with zero occupancy, the AltConf column contains the number of residues with at least one atom in alternate conformation and the Trace column contains the number of residues modelled with at most 2 atoms.

- Molecule 1 is a protein called Protein argonaute-2.

Mol	Chain	Residues	Atoms					ZeroOcc	AltConf	Trace
1	A	801	Total	C	N	O	S	0	0	0
			6419	4089	1154	1136	40			

There is a discrepancy between the modelled and reference sequences:

Chain	Residue	Modelled	Actual	Comment	Reference
A	387	ASP	SER	engineered mutation	UNP Q9UKV8

- Molecule 2 is a RNA chain called RNA (5'-R(P*UP*UP*CP*AP*CP*AP*UP*UP*GP*CP*CP*CP*AP*AP*GP*UP*CP*UP*UP*U)-3').

Mol	Chain	Residues	Atoms					ZeroOcc	AltConf	Trace
2	B	20	Total	C	N	O	P	0	0	0
			399	177	62	140	20			

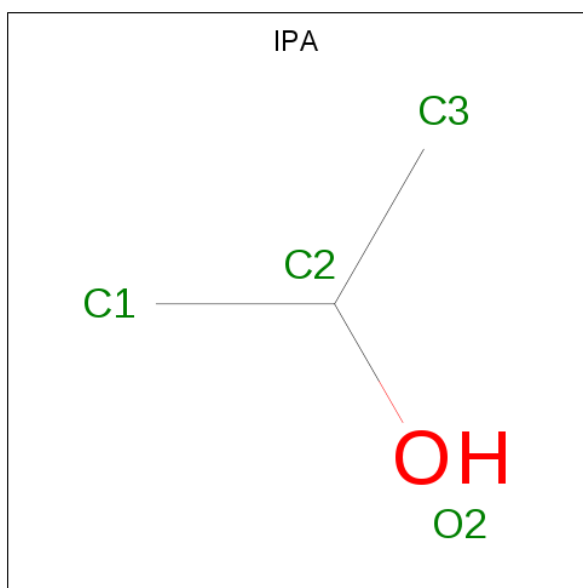
- Molecule 3 is a RNA chain called RNA (5'-R(*CP*AP*AP*UP*GP*UP*GP*AP*AP*A)-3').

Mol	Chain	Residues	Atoms					ZeroOcc	AltConf	Trace
3	D	10	Total	C	N	O	P	0	0	0
			196	88	37	62	9			

- Molecule 4 is MAGNESIUM ION (three-letter code: MG) (formula: Mg).

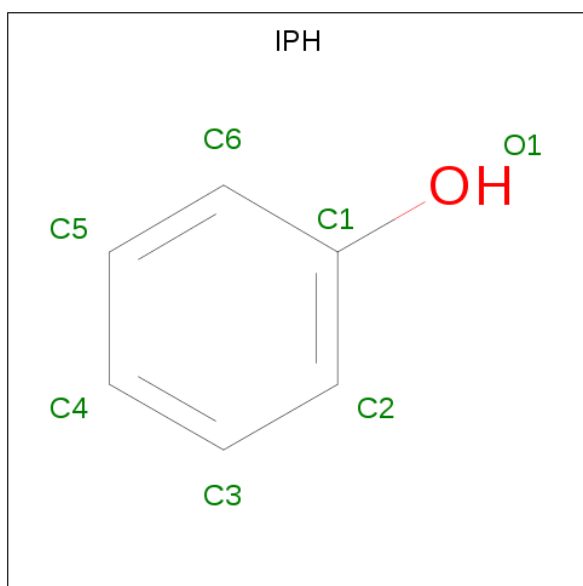
Mol	Chain	Residues	Atoms		ZeroOcc	AltConf
4	B	1	Total	Mg	0	0
			1	1		
4	A	1	Total	Mg	0	0
			1	1		
4	D	1	Total	Mg	0	0
			1	1		

- Molecule 5 is ISOPROPYL ALCOHOL (three-letter code: IPA) (formula: C_3H_8O).



Mol	Chain	Residues	Atoms			ZeroOcc	AltConf
5	A	1	Total	C	O	0	0
			4	3	1		
5	A	1	Total	C	O	0	0
			4	3	1		

- Molecule 6 is PHENOL (three-letter code: IPH) (formula: C_6H_6O).



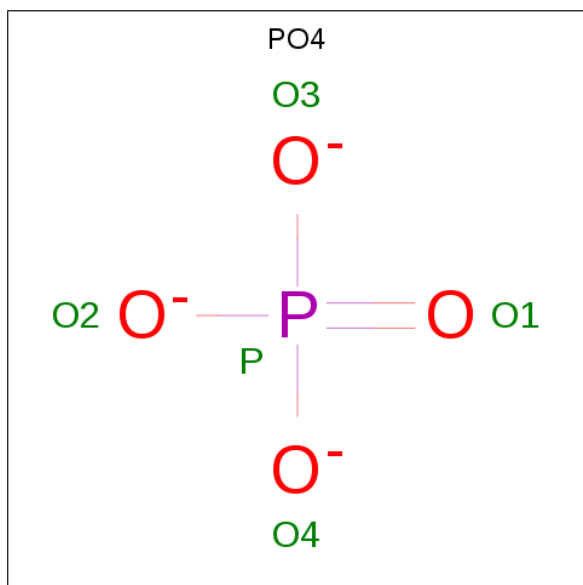
Mol	Chain	Residues	Atoms			ZeroOcc	AltConf
6	A	1	Total	C	O	0	0
			7	6	1		

Continued on next page...

Continued from previous page...

Mol	Chain	Residues	Atoms			ZeroOcc	AltConf
6	A	1	Total	C	O	0	0
			7	6	1		
6	A	1	Total	C	O	0	0
			7	6	1		
6	A	1	Total	C	O	0	0
			7	6	1		

- Molecule 7 is PHOSPHATE ION (three-letter code: PO4) (formula: O₄P).

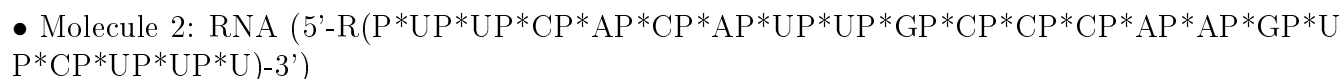


Mol	Chain	Residues	Atoms			ZeroOcc	AltConf
7	B	1	Total	O	P	0	0
			5	4	1		

- Molecule 8 is water.

Mol	Chain	Residues	Atoms		ZeroOcc	AltConf
8	A	354	Total	O	0	0
			354	354		
8	B	45	Total	O	0	0
			45	45		
8	D	34	Total	O	0	0
			34	34		

- Molecule 1: Protein argonaute-2



4 Data and refinement statistics

Property	Value	Source
Space group	P 1 21 1	Depositor
Cell constants a, b, c, α , β , γ	55.81Å 116.99Å 69.77Å 90.00° 92.45° 90.00°	Depositor
Resolution (Å)	34.47 – 1.80 34.47 – 1.80	Depositor EDS
% Data completeness (in resolution range)	97.6 (34.47-1.80) 97.6 (34.47-1.80)	Depositor EDS
R_{merge}	0.06	Depositor
R_{sym}	(Not available)	Depositor
$\langle I/\sigma(I) \rangle$ ¹	2.21 (at 1.81Å)	Xtriage
Refinement program	PHENIX (phenix.refine: 1.8.2_1309)	Depositor
R, R_{free}	0.167 , 0.197 0.167 , 0.195	Depositor DCC
R_{free} test set	4012 reflections (4.99%)	wwPDB-VP
Wilson B-factor (Å ²)	24.4	Xtriage
Anisotropy	0.442	Xtriage
Bulk solvent k_{sol} (e/Å ³), B_{sol} (Å ²)	0.35 , 53.2	EDS
L-test for twinning ²	$\langle L \rangle = 0.48$, $\langle L^2 \rangle = 0.31$	Xtriage
Estimated twinning fraction	0.038 for h,-k,-l	Xtriage
F_o, F_c correlation	0.96	EDS
Total number of atoms	7491	wwPDB-VP
Average B, all atoms (Å ²)	37.0	wwPDB-VP

Xtriage's analysis on translational NCS is as follows: *The largest off-origin peak in the Patterson function is 4.25% of the height of the origin peak. No significant pseudotranslation is detected.*

¹Intensities estimated from amplitudes.

²Theoretical values of $\langle |L| \rangle$, $\langle L^2 \rangle$ for acentric reflections are 0.5, 0.333 respectively for untwinned datasets, and 0.375, 0.2 for perfectly twinned datasets.

5 Model quality [i](#)

5.1 Standard geometry [i](#)

Bond lengths and bond angles in the following residue types are not validated in this section: PO4, MG, IPA, IPH

The Z score for a bond length (or angle) is the number of standard deviations the observed value is removed from the expected value. A bond length (or angle) with $|Z| > 5$ is considered an outlier worth inspection. RMSZ is the root-mean-square of all Z scores of the bond lengths (or angles).

Mol	Chain	Bond lengths		Bond angles	
		RMSZ	$\# Z > 5$	RMSZ	$\# Z > 5$
1	A	0.37	0/6570	0.55	0/8889
2	B	0.72	1/441 (0.2%)	1.05	3/679 (0.4%)
3	D	0.47	0/219	0.95	0/340
All	All	0.40	1/7230 (0.0%)	0.61	3/9908 (0.0%)

All (1) bond length outliers are listed below:

Mol	Chain	Res	Type	Atoms	Z	Observed(Å)	Ideal(Å)
2	B	1	U	OP3-P	-10.20	1.49	1.61

All (3) bond angle outliers are listed below:

Mol	Chain	Res	Type	Atoms	Z	Observed(°)	Ideal(°)
2	B	20	U	C2-N1-C1'	6.11	125.04	117.70
2	B	20	U	C6-N1-C1'	-5.33	113.74	121.20
2	B	20	U	N1-C1'-C2'	5.05	120.57	114.00

There are no chirality outliers.

There are no planarity outliers.

5.2 Too-close contacts [i](#)

In the following table, the Non-H and H(model) columns list the number of non-hydrogen atoms and hydrogen atoms in the chain respectively. The H(added) column lists the number of hydrogen atoms added and optimized by MolProbity. The Clashes column lists the number of clashes within the asymmetric unit, whereas Symm-Clashes lists symmetry related clashes.

Mol	Chain	Non-H	H(model)	H(added)	Clashes	Symm-Clashes
1	A	6419	0	6487	55	0

Continued on next page...

Continued from previous page...

Mol	Chain	Non-H	H(model)	H(added)	Clashes	Symm-Clashes
2	B	399	0	203	2	0
3	D	196	0	98	0	0
4	A	1	0	0	0	0
4	B	1	0	0	0	0
4	D	1	0	0	0	0
5	A	8	0	16	2	0
6	A	28	0	24	1	0
7	B	5	0	0	0	0
8	A	354	0	0	1	0
8	B	45	0	0	0	0
8	D	34	0	0	0	0
All	All	7491	0	6828	56	0

The all-atom clashscore is defined as the number of clashes found per 1000 atoms (including hydrogen atoms). The all-atom clashscore for this structure is 4.

All (56) close contacts within the same asymmetric unit are listed below, sorted by their clash magnitude.

Atom-1	Atom-2	Interatomic distance (Å)	Clash overlap (Å)
1:A:227:ALA:H	5:A:902:IPA:H12	1.37	0.90
1:A:243:ILE:HD11	1:A:325:LEU:HD11	1.65	0.77
1:A:484:PRO:HB2	1:A:486:GLN:HE21	1.49	0.77
1:A:231:ILE:HG23	1:A:243:ILE:HD12	1.69	0.73
1:A:112:LYS:HG2	1:A:133:LYS:HG2	1.73	0.70
1:A:696:LYS:HB3	1:A:697:ASP:HB2	1.74	0.69
1:A:74:ILE:HG23	1:A:117:VAL:HG21	1.73	0.68
1:A:169:LEU:HD21	1:A:173:ARG:HH21	1.61	0.64
1:A:55:TYR:HD2	1:A:134:TRP:HZ3	1.48	0.61
1:A:110:ARG:HG2	1:A:134:TRP:CD1	2.37	0.60
1:A:296:LEU:HD11	1:A:306:CYS:HB2	1.84	0.59
1:A:395:ARG:NE	1:A:395:ARG:HA	2.18	0.59
1:A:119:LEU:HD12	1:A:120:PRO:HD2	1.85	0.58
1:A:696:LYS:HB3	1:A:697:ASP:CA	2.35	0.56
1:A:756:ILE:HD11	1:A:795:ARG:NH2	2.21	0.56
1:A:484:PRO:HB2	1:A:486:GLN:NE2	2.20	0.55
1:A:695:GLU:HG2	1:A:696:LYS:HB2	1.88	0.55
1:A:186:GLU:CD	1:A:186:GLU:H	2.11	0.54
1:A:114:GLU:OE2	1:A:129:LYS:HB3	2.08	0.53
1:A:296:LEU:H	1:A:296:LEU:HD12	1.74	0.53
1:A:696:LYS:HB3	1:A:697:ASP:CB	2.38	0.53
1:A:55:TYR:HD2	1:A:134:TRP:CZ3	2.27	0.52

Continued on next page...

Continued from previous page...

Atom-1	Atom-2	Interatomic distance (Å)	Clash overlap (Å)
1:A:50:PRO:HB2	1:A:52:ILE:HD12	1.93	0.50
1:A:279:TYR:HB3	1:A:330:VAL:HB	1.94	0.50
1:A:77:HIS:HA	1:A:80:GLN:HG2	1.93	0.50
1:A:696:LYS:HB3	1:A:697:ASP:C	2.32	0.49
1:A:45:PHE:CZ	1:A:383:MET:HG3	2.47	0.49
1:A:151:LEU:HG	1:A:152:PRO:HD2	1.93	0.49
1:A:77:HIS:CD2	1:A:119:LEU:HD13	2.47	0.49
1:A:199:TRP:HZ2	5:A:902:IPA:H32	1.77	0.48
1:A:277:ARG:HG2	1:A:279:TYR:CE2	2.47	0.48
2:B:3:C:H2'	2:B:4:A:C8	2.49	0.48
1:A:569:VAL:HG21	1:A:791:VAL:HB	1.96	0.48
1:A:106:LEU:O	1:A:108:ILE:HG13	2.14	0.48
1:A:86:ILE:HG22	1:A:87:PHE:CG	2.50	0.47
1:A:55:TYR:CD2	1:A:134:TRP:HZ3	2.32	0.47
1:A:61:ILE:O	1:A:64:GLU:HB3	2.15	0.47
1:A:336:HIS:ND1	2:B:21:U:O2	2.48	0.46
1:A:673:GLU:HG3	8:A:1202:HOH:O	2.13	0.46
1:A:110:ARG:HG2	1:A:134:TRP:HD1	1.79	0.46
1:A:333:GLU:HG3	1:A:334:GLN:HG3	1.98	0.46
1:A:245:GLU:HA	1:A:246:GLN:HA	1.76	0.45
1:A:475:ARG:HG2	1:A:485:ILE:HB	1.98	0.45
1:A:370:ARG:O	1:A:758:GLY:HA2	2.16	0.45
1:A:112:LYS:HG2	1:A:133:LYS:CG	2.45	0.45
1:A:119:LEU:HD12	1:A:120:PRO:CD	2.46	0.45
1:A:108:ILE:HD12	1:A:109:GLY:H	1.83	0.43
1:A:322:TYR:N	1:A:342:GLU:OE2	2.40	0.43
1:A:277:ARG:HD3	1:A:279:TYR:OH	2.20	0.42
1:A:696:LYS:CB	1:A:697:ASP:HB2	2.47	0.42
1:A:84:THR:O	1:A:85:GLN:HG2	2.18	0.42
1:A:695:GLU:HG2	1:A:696:LYS:CB	2.50	0.41
1:A:117:VAL:HG22	1:A:128:PHE:HB2	2.02	0.41
1:A:425:LYS:HB3	1:A:425:LYS:HE2	1.79	0.40
1:A:691:CYS:HB2	6:A:904:IPH:H3	2.02	0.40
1:A:69:ARG:NH1	1:A:73:GLU:HG2	2.37	0.40

There are no symmetry-related clashes.

5.3 Torsion angles [i](#)

5.3.1 Protein backbone [i](#)

In the following table, the Percentiles column shows the percent Ramachandran outliers of the chain as a percentile score with respect to all X-ray entries followed by that with respect to entries of similar resolution.

The Analysed column shows the number of residues for which the backbone conformation was analysed, and the total number of residues.

Mol	Chain	Analysed	Favoured	Allowed	Outliers	Percentiles	
1	A	789/859 (92%)	766 (97%)	23 (3%)	0	100	100

There are no Ramachandran outliers to report.

5.3.2 Protein sidechains [i](#)

In the following table, the Percentiles column shows the percent sidechain outliers of the chain as a percentile score with respect to all X-ray entries followed by that with respect to entries of similar resolution.

The Analysed column shows the number of residues for which the sidechain conformation was analysed, and the total number of residues.

Mol	Chain	Analysed	Rotameric	Outliers	Percentiles	
1	A	708/752 (94%)	699 (99%)	9 (1%)	69	62

All (9) residues with a non-rotameric sidechain are listed below:

Mol	Chain	Res	Type
1	A	108	ILE
1	A	111	ASP
1	A	134	TRP
1	A	296	LEU
1	A	370	ARG
1	A	387	ASP
1	A	425	LYS
1	A	804	TYR
1	A	815	TYR

Some sidechains can be flipped to improve hydrogen bonding and reduce clashes. All (4) such sidechains are listed below:

Mol	Chain	Res	Type
1	A	77	HIS
1	A	228	GLN
1	A	459	GLN
1	A	486	GLN

5.3.3 RNA [i](#)

Mol	Chain	Analysed	Backbone Outliers	Pucker Outliers
2	B	17/21 (80%)	1 (5%)	0
3	D	8/11 (72%)	0	0
All	All	25/32 (78%)	1 (4%)	0

All (1) RNA backbone outliers are listed below:

Mol	Chain	Res	Type
2	B	21	U

There are no RNA pucker outliers to report.

5.4 Non-standard residues in protein, DNA, RNA chains [i](#)

There are no non-standard protein/DNA/RNA residues in this entry.

5.5 Carbohydrates [i](#)

There are no monosaccharides in this entry.

5.6 Ligand geometry [i](#)

Of 10 ligands modelled in this entry, 3 are monoatomic - leaving 7 for Mogul analysis.

In the following table, the Counts columns list the number of bonds (or angles) for which Mogul statistics could be retrieved, the number of bonds (or angles) that are observed in the model and the number of bonds (or angles) that are defined in the Chemical Component Dictionary. The Link column lists molecule types, if any, to which the group is linked. The Z score for a bond length (or angle) is the number of standard deviations the observed value is removed from the expected value. A bond length (or angle) with $|Z| > 2$ is considered an outlier worth inspection. RMSZ is the root-mean-square of all Z scores of the bond lengths (or angles).

Mol	Type	Chain	Res	Link	Bond lengths			Bond angles		
					Counts	RMSZ	# Z > 2	Counts	RMSZ	# Z > 2
6	IPH	A	906	-	7,7,7	0.55	0	8,8,8	0.24	0
6	IPH	A	905	-	7,7,7	0.36	0	8,8,8	0.32	0
5	IPA	A	902	-	3,3,3	0.55	0	3,3,3	0.31	0
6	IPH	A	907	-	7,7,7	0.44	0	8,8,8	0.37	0
6	IPH	A	904	-	7,7,7	0.50	0	8,8,8	0.26	0
7	PO4	B	102	-	4,4,4	0.84	0	6,6,6	0.47	0
5	IPA	A	903	-	3,3,3	0.57	0	3,3,3	0.27	0

In the following table, the Chirals column lists the number of chiral outliers, the number of chiral centers analysed, the number of these observed in the model and the number defined in the Chemical Component Dictionary. Similar counts are reported in the Torsion and Rings columns. '-' means no outliers of that kind were identified.

Mol	Type	Chain	Res	Link	Chirals	Torsions	Rings
6	IPH	A	907	-	-	-	0/1/1/1
6	IPH	A	905	-	-	-	0/1/1/1
6	IPH	A	906	-	-	-	0/1/1/1
6	IPH	A	904	-	-	-	0/1/1/1

There are no bond length outliers.

There are no bond angle outliers.

There are no chirality outliers.

There are no torsion outliers.

There are no ring outliers.

2 monomers are involved in 3 short contacts:

Mol	Chain	Res	Type	Clashes	Symm-Clashes
5	A	902	IPA	2	0
6	A	904	IPH	1	0

5.7 Other polymers [i](#)

There are no such residues in this entry.

5.8 Polymer linkage issues [i](#)

There are no chain breaks in this entry.

6 Fit of model and data ⓘ

6.1 Protein, DNA and RNA chains ⓘ

In the following table, the column labelled ‘#RSRZ> 2’ contains the number (and percentage) of RSRZ outliers, followed by percent RSRZ outliers for the chain as percentile scores relative to all X-ray entries and entries of similar resolution. The OWAB column contains the minimum, median, 95th percentile and maximum values of the occupancy-weighted average B-factor per residue. The column labelled ‘Q< 0.9’ lists the number of (and percentage) of residues with an average occupancy less than 0.9.

Mol	Chain	Analysed	<RSRZ>	#RSRZ>2	OWAB(Å ²)	Q<0.9
1	A	801/859 (93%)	0.49	98 (12%) 4 3	13, 31, 76, 96	0
2	B	20/21 (95%)	-0.03	1 (5%) 28 23	15, 32, 91, 118	0
3	D	10/11 (90%)	-0.52	0 100 100	24, 26, 45, 69	0
All	All	831/891 (93%)	0.47	99 (11%) 4 3	13, 31, 76, 118	0

All (99) RSRZ outliers are listed below:

Mol	Chain	Res	Type	RSRZ
1	A	246	GLN	7.4
1	A	110	ARG	7.4
1	A	120	PRO	6.3
1	A	296	LEU	6.3
1	A	423	ARG	6.1
1	A	134	TRP	5.7
1	A	149	GLY	5.7
1	A	245	GLU	5.6
1	A	119	LEU	5.6
1	A	84	THR	5.2
1	A	65	LYS	5.2
1	A	152	PRO	5.0
1	A	23	PHE	5.0
1	A	108	ILE	4.9
1	A	151	LEU	4.7
1	A	64	GLU	4.6
1	A	85	GLN	4.6
1	A	311	TYR	4.4
1	A	248	LYS	4.3
1	A	133	LYS	4.3
1	A	117	VAL	4.1
1	A	87	PHE	4.1
1	A	241	LYS	4.1

Continued on next page...

Continued from previous page...

Mol	Chain	Res	Type	RSRZ
1	A	277	ARG	4.1
1	A	88	GLY	3.9
1	A	150	ARG	3.9
1	A	109	GLY	3.8
1	A	52	ILE	3.8
1	A	86	ILE	3.8
1	A	316	HIS	3.8
1	A	424	ASN	3.7
1	A	336	HIS	3.7
1	A	295	PRO	3.7
1	A	156	PHE	3.6
1	A	51	LYS	3.6
1	A	315	ARG	3.6
1	A	279	TYR	3.6
1	A	127	ILE	3.5
1	A	154	VAL	3.5
1	A	318	LEU	3.5
1	A	80	GLN	3.5
1	A	247	GLN	3.3
1	A	114	GLU	3.3
1	A	313	LYS	3.3
1	A	142	ALA	3.3
1	A	63	PRO	3.3
1	A	211	TRP	3.2
1	A	132	ILE	3.2
1	A	355	LYS	3.2
1	A	81	HIS	3.1
1	A	115	LEU	3.1
1	A	293	THR	3.0
1	A	312	PHE	3.0
1	A	243	ILE	3.0
1	A	113	VAL	3.0
1	A	244	GLU	2.9
1	A	707	VAL	2.9
1	A	269	ILE	2.8
1	A	322	TYR	2.7
2	B	20	U	2.7
1	A	140	LEU	2.6
1	A	294	PHE	2.5
1	A	55	TYR	2.5
1	A	307	THR	2.5
1	A	332	GLN	2.5

Continued on next page...

Continued from previous page...

Mol	Chain	Res	Type	RSRZ
1	A	61	ILE	2.5
1	A	249	PRO	2.5
1	A	291	HIS	2.4
1	A	319	VAL	2.4
1	A	60	ASP	2.4
1	A	790	TYR	2.3
1	A	338	TYR	2.3
1	A	317	LYS	2.3
1	A	791	VAL	2.3
1	A	324	HIS	2.3
1	A	118	THR	2.3
1	A	138	VAL	2.2
1	A	803	ALA	2.2
1	A	104	MET	2.2
1	A	111	ASP	2.2
1	A	62	LYS	2.2
1	A	314	ASP	2.2
1	A	22	ALA	2.2
1	A	331	GLY	2.2
1	A	808	LEU	2.1
1	A	604	GLY	2.1
1	A	116	GLU	2.1
1	A	188	CYS	2.1
1	A	53	ASP	2.1
1	A	422	GLY	2.1
1	A	460	ARG	2.1
1	A	367	ALA	2.1
1	A	805	TYR	2.1
1	A	797	VAL	2.1
1	A	147	LEU	2.1
1	A	323	PRO	2.1
1	A	486	GLN	2.0
1	A	112	LYS	2.0
1	A	605	ASP	2.0

6.2 Non-standard residues in protein, DNA, RNA chains ⓘ

There are no non-standard protein/DNA/RNA residues in this entry.

6.3 Carbohydrates [i](#)

There are no monosaccharides in this entry.

6.4 Ligands [i](#)

In the following table, the Atoms column lists the number of modelled atoms in the group and the number defined in the chemical component dictionary. The B-factors column lists the minimum, median, 95th percentile and maximum values of B factors of atoms in the group. The column labelled 'Q< 0.9' lists the number of atoms with occupancy less than 0.9.

Mol	Type	Chain	Res	Atoms	RSCC	RSR	B-factors(\AA^2)	Q<0.9
5	IPA	A	902	4/4	0.72	0.24	24,37,38,49	0
7	PO4	B	102	5/5	0.78	0.42	90,91,92,93	0
5	IPA	A	903	4/4	0.80	0.21	37,42,43,47	0
6	IPH	A	904	7/7	0.83	0.13	43,46,49,52	0
6	IPH	A	907	7/7	0.88	0.17	33,38,38,39	0
6	IPH	A	906	7/7	0.93	0.12	21,24,27,38	0
4	MG	D	101	1/1	0.98	0.06	23,23,23,23	0
6	IPH	A	905	7/7	0.98	0.09	24,26,28,35	0
4	MG	B	101	1/1	0.99	0.13	33,33,33,33	0
4	MG	A	901	1/1	0.99	0.06	17,17,17,17	0

6.5 Other polymers [i](#)

There are no such residues in this entry.