



# Full wwPDB X-ray Structure Validation Report ⓘ

May 25, 2020 – 01:39 pm BST

PDB ID : 5W7R  
Title : Crystal structure of OxaC in complex with SAH and oxaline  
Authors : Newmister, S.A.; Romminger, S.; Schmidt, J.J.; Williams, R.M.; Smith, J.L.;  
Berlinck, R.G.S.; Sherman, D.H.  
Deposited on : 2017-06-20  
Resolution : 2.50 Å(reported)

This is a Full wwPDB X-ray Structure Validation Report for a publicly released PDB entry.

We welcome your comments at [validation@mail.wwpdb.org](mailto:validation@mail.wwpdb.org)

A user guide is available at

<https://www.wwpdb.org/validation/2017/XrayValidationReportHelp>

with specific help available everywhere you see the ⓘ symbol.

---

The following versions of software and data (see [references ⓘ](#)) were used in the production of this report:

MolProbity : 4.02b-467  
Mogul : 1.8.5 (274361), CSD as541be (2020)  
Xtriage (Phenix) : 1.13  
EDS : 2.11  
buster-report : 1.1.7 (2018)  
Percentile statistics : 20191225.v01 (using entries in the PDB archive December 25th 2019)  
Refmac : 5.8.0158  
CCP4 : 7.0.044 (Gargrove)  
Ideal geometry (proteins) : Engh & Huber (2001)  
Ideal geometry (DNA, RNA) : Parkinson et al. (1996)  
Validation Pipeline (wwPDB-VP) : 2.11

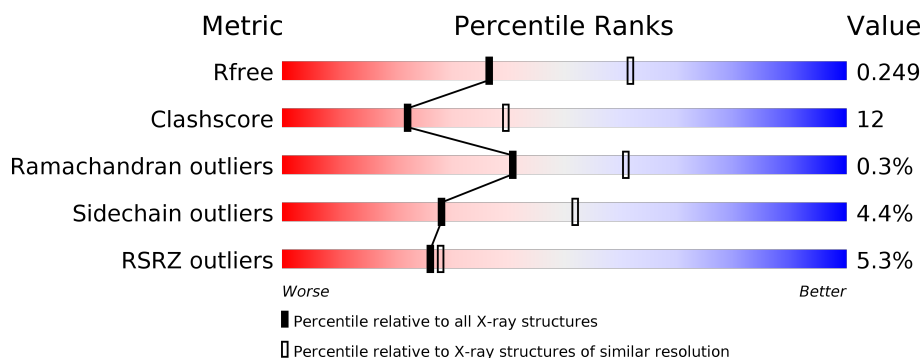
# 1 Overall quality at a glance

The following experimental techniques were used to determine the structure:

## *X-RAY DIFFRACTION*

The reported resolution of this entry is 2.50 Å.

Percentile scores (ranging between 0-100) for global validation metrics of the entry are shown in the following graphic. The table shows the number of entries on which the scores are based.



Metric	Whole archive (#Entries)	Similar resolution (#Entries, resolution range(Å))
$R_{free}$	130704	4661 (2.50-2.50)
Clashscore	141614	5346 (2.50-2.50)
Ramachandran outliers	138981	5231 (2.50-2.50)
Sidechain outliers	138945	5233 (2.50-2.50)
RSRZ outliers	127900	4559 (2.50-2.50)

The table below summarises the geometric issues observed across the polymeric chains and their fit to the electron density. The red, orange, yellow and green segments on the lower bar indicate the fraction of residues that contain outliers for  $\geq 3$ , 2, 1 and 0 types of geometric quality criteria respectively. A grey segment represents the fraction of residues that are not modelled. The numeric value for each fraction is indicated below the corresponding segment, with a dot representing fractions  $\leq 5\%$ . The upper red bar (where present) indicates the fraction of residues that have poor fit to the electron density. The numeric value is given above the bar.

Mol	Chain	Length	Quality of chain
1	A	429	<div> <div>5%</div> <div> <div></div> <div>72%</div> <div>19%</div> <div>• 8%</div> </div> </div>

## 2 Entry composition

There are 4 unique types of molecules in this entry. The entry contains 3096 atoms, of which 0 are hydrogens and 0 are deuteriums.

In the tables below, the ZeroOcc column contains the number of atoms modelled with zero occupancy, the AltConf column contains the number of residues with at least one atom in alternate conformation and the Trace column contains the number of residues modelled with at most 2 atoms.

- Molecule 1 is a protein called OxaC.

Mol	Chain	Residues	Atoms					ZeroOcc	AltConf	Trace
			Total	C	N	O	S			
1	A	396	3027	1914	525	570	18	0	0	0

There are 24 discrepancies between the modelled and reference sequences:

Chain	Residue	Modelled	Actual	Comment	Reference
A	-23	MET	-	expression tag	UNP A0A1B2TT09
A	-22	GLY	-	expression tag	UNP A0A1B2TT09
A	-21	SER	-	expression tag	UNP A0A1B2TT09
A	-20	SER	-	expression tag	UNP A0A1B2TT09
A	-19	HIS	-	expression tag	UNP A0A1B2TT09
A	-18	HIS	-	expression tag	UNP A0A1B2TT09
A	-17	HIS	-	expression tag	UNP A0A1B2TT09
A	-16	HIS	-	expression tag	UNP A0A1B2TT09
A	-15	HIS	-	expression tag	UNP A0A1B2TT09
A	-14	HIS	-	expression tag	UNP A0A1B2TT09
A	-13	HIS	-	expression tag	UNP A0A1B2TT09
A	-12	HIS	-	expression tag	UNP A0A1B2TT09
A	-11	GLY	-	expression tag	UNP A0A1B2TT09
A	-10	ALA	-	expression tag	UNP A0A1B2TT09
A	-9	SER	-	expression tag	UNP A0A1B2TT09
A	-8	GLU	-	expression tag	UNP A0A1B2TT09
A	-7	ASN	-	expression tag	UNP A0A1B2TT09
A	-6	LEU	-	expression tag	UNP A0A1B2TT09
A	-5	TYR	-	expression tag	UNP A0A1B2TT09
A	-4	PHE	-	expression tag	UNP A0A1B2TT09
A	-3	GLN	-	expression tag	UNP A0A1B2TT09
A	-2	GLY	-	expression tag	UNP A0A1B2TT09
A	-1	ALA	-	expression tag	UNP A0A1B2TT09
A	0	SER	-	expression tag	UNP A0A1B2TT09

- Molecule 2 is (3E,7aR,12aS)-3-[(1H-imidazol-4-yl)methylidene]-6,12-dimethoxy-7a-(2-methylbut-3-en-2-yl)-7a,12-dihydro-1H,5H-imidazo[1',2':1,2]pyrido[2,3-b]indole-2,5(3H)-dione

ORTEP diagram of the chemical structure of 2-((2-oxo-2H-chromene-3-yl)oxy)-N-(2-oxo-2H-chromen-3-yl)-N-methylpyrrolidine-5-carboxamide. The molecule is shown with thermal ellipsoids at the 50% probability level. The structure features a central pyrrolidine ring (N1, N2, N3, N4, N5) substituted with a methyl group (C16), a carboxamide group (C15, O15, O16), and a 2-oxo-2H-chromen-3-yl group (C1-C6, O17, O18). The pyrrolidine ring is also substituted with a 2-((2-oxo-2H-chromene-3-yl)oxy) group (C7(R), C8, C9, C10, C11, C12, O19, O20, O21, O22). The 2-oxo-2H-chromene moiety consists of a benzene ring (C1-C6) fused to a pyrone ring (C7(R), C8, C9, C10, C11, C12, O17, O18). The 2-((2-oxo-2H-chromene-3-yl)oxy) group consists of a benzene ring (C13(S), C14, C15, C16, C17, C18, O19, O20, O21, O22) substituted with a 2-oxo-2H-chromen-3-yl group (C13(S), C14, C15, C16, C17, C18, O19, O20, O21, O22).

Mol	Chain	Residues	Atoms				ZeroOcc	AltConf
2	A	1	Total	C	N	O	0	0
			33	24	5	4		

- 
- The chemical structure of S-adenosylmethionine (SAM) is shown with the following atom labels: N6 (amino group), N1, C6, C5, N7, C8, N3, C4, N9, C1' (R), C2' (R), O2', O4', C3' (S), C5', C4' (S), S0, C5, C6, C7, C8, C9, C10, C11, C12, C13, C14, C15, C16, C17, C18, C19, C20, C21, C22, C23, C24, C25, C26, C27, C28, C29, C30, C31, C32, C33, C34, C35, C36, C37, C38, C39, C40, C41, C42, C43, C44, C45, C46, C47, C48, C49, C50, C51, C52, C53, C54, C55, C56, C57, C58, C59, C60, C61, C62, C63, C64, C65, C66, C67, C68, C69, C70, C71, C72, C73, C74, C75, C76, C77, C78, C79, C80, C81, C82, C83, C84, C85, C86, C87, C88, C89, C90, C91, C92, C93, C94, C95, C96, C97, C98, C99, C100, C101, C102, C103, C104, C105, C106, C107, C108, C109, C110, C111, C112, C113, C114, C115, C116, C117, C118, C119, C120, C121, C122, C123, C124, C125, C126, C127, C128, C129, C130, C131, C132, C133, C134, C135, C136, C137, C138, C139, C140, C141, C142, C143, C144, C145, C146, C147, C148, C149, C150, C151, C152, C153, C154, C155, C156, C157, C158, C159, C160, C161, C162, C163, C164, C165, C166, C167, C168, C169, C170, C171, C172, C173, C174, C175, C176, C177, C178, C179, C180, C181, C182, C183, C184, C185, C186, C187, C188, C189, C190, C191, C192, C193, C194, C195, C196, C197, C198, C199, C200, C201, C202, C203, C204, C205, C206, C207, C208, C209, C210, C211, C212, C213, C214, C215, C216, C217, C218, C219, C220, C221, C222, C223, C224, C225, C226, C227, C228, C229, C230, C231, C232, C233, C234, C235, C236, C237, C238, C239, C240, C241, C242, C243, C244, C245, C246, C247, C248, C249, C250, C251, C252, C253, C254, C255, C256, C257, C258, C259, C260, C261, C262, C263, C264, C265, C266, C267, C268, C269, C270, C271, C272, C273, C274, C275, C276, C277, C278, C279, C280, C281, C282, C283, C284, C285, C286, C287, C288, C289, C290, C291, C292, C293, C294, C295, C296, C297, C298, C299, C300, C301, C302, C303, C304, C305, C306, C307, C308, C309, C310, C311, C312, C313, C314, C315, C316, C317, C318, C319, C320, C321, C322, C323, C324, C325, C326, C327, C328, C329, C330, C331, C332, C333, C334, C335, C336, C337, C338, C339, C340, C341, C342, C343, C344, C345, C346, C347, C348, C349, C350, C351, C352, C353, C354, C355, C356, C357, C358, C359, C360, C361, C362, C363, C364, C365, C366, C367, C368, C369, C370, C371, C372, C373, C374, C375, C376, C377, C378, C379, C380, C381, C382, C383, C384, C385, C386, C387, C388, C389, C390, C391, C392, C393, C394, C395, C396, C397, C398, C399, C400, C401, C402, C403, C404, C405, C406, C407, C408, C409, C410, C411, C412, C413, C414, C415, C416, C417, C418, C419, C420, C421, C422, C423, C424, C425, C426, C427, C428, C429, C430, C431, C432, C433, C434, C435, C436, C437, C438, C439, C440, C441, C442, C443, C444, C445, C446, C447, C448, C449, C450, C451, C452, C453, C454, C455, C456, C457, C458, C459, C460, C461, C462, C463, C464, C465, C466, C467, C468, C469, C470, C471, C472, C473, C474, C475, C476, C477, C478, C479, C480, C481, C482, C483, C484, C485, C486, C487, C488, C489, C490, C491, C492, C493, C494, C495, C496, C497, C498, C499, C500, C501, C502, C503, C504, C505, C506, C507, C508, C509, C510, C511, C512, C513, C514, C515, C516, C517, C518, C519, C520, C521, C522, C523, C524, C525, C526, C527, C528, C529, C530, C531, C532, C533, C534, C535, C536, C537, C538, C539, C540, C541, C542, C543, C544, C545, C546, C547, C548, C549, C550, C551, C552, C553, C554, C555, C556, C557, C558, C559, C560, C561, C562, C563, C564, C565, C566, C567, C568, C569, C570, C571, C572, C573, C574, C575, C576, C577, C578, C579, C580, C581, C582, C583, C584, C585, C586, C587, C588, C589, C590, C591, C592, C593, C594, C595, C596, C597, C598, C599, C600, C601, C602, C603, C604, C605, C606, C607, C608, C609, C610, C611, C612, C613, C614, C615, C616, C617, C618, C619, C620, C621, C622, C623, C624, C625, C626, C627, C628, C629, C630, C631, C632, C633, C634, C635, C636, C637, C638, C639, C640, C641, C642, C643, C644, C645, C646, C647, C648, C649, C650, C651, C652, C653, C654, C655, C656, C657, C658, C659, C660, C661, C662, C663, C664, C665, C666, C667, C668, C669, C670, C671, C672, C673, C674, C675, C676, C677, C678, C679, C680, C681, C682, C683, C684, C685, C686, C687, C688, C689, C690, C691, C692, C693, C694, C695, C696, C697, C698, C699, C700, C701, C702, C703, C704, C705, C706, C707, C708, C709, C710, C711, C712, C713, C714, C715, C716, C717, C718, C719, C720, C721, C722, C723, C724, C725, C726, C727, C728, C729, C730, C731, C732, C733, C734, C735, C736, C737, C738, C739, C740, C741, C742, C743, C744, C745, C746, C747, C748, C749, C750, C751, C752, C753, C754, C755, C756, C757, C758, C759, C760, C761, C762, C763, C764, C765, C766, C767, C768, C769, C770, C771, C772, C773, C774, C775, C776, C777, C778, C779, C780, C781, C782, C783, C784, C785, C786, C787, C788, C789, C790, C791, C792, C793, C794, C795, C796, C797, C798, C799, C800, C801, C802, C803, C804, C805, C806, C807, C808, C809, C810, C811, C812, C813, C814, C815, C816, C817, C818, C819, C820, C

Mol	Chain	Residues	Atoms					ZeroOcc	AltConf
3	A	1	Total	C	N	O	S	0	0
			26	14	6	5	1		

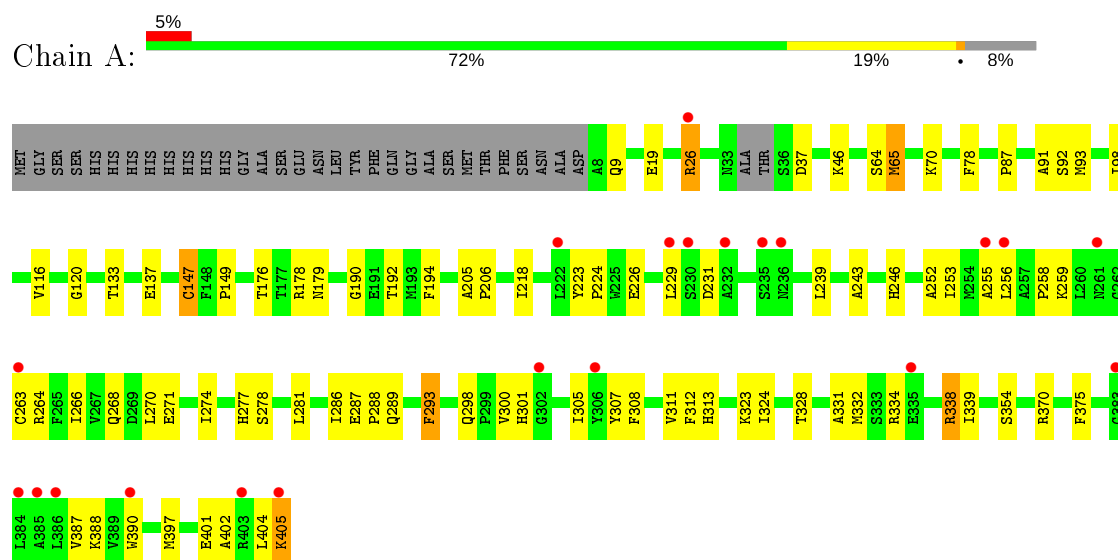
- Molecule 4 is water.

Mol	Chain	Residues	Atoms		ZeroOcc	AltConf
4	A	10	Total	O	0	0
			10	10		

### 3 Residue-property plots [i](#)

These plots are drawn for all protein, RNA and DNA chains in the entry. The first graphic for a chain summarises the proportions of the various outlier classes displayed in the second graphic. The second graphic shows the sequence view annotated by issues in geometry and electron density. Residues are color-coded according to the number of geometric quality criteria for which they contain at least one outlier: green = 0, yellow = 1, orange = 2 and red = 3 or more. A red dot above a residue indicates a poor fit to the electron density ( $RSRZ > 2$ ). Stretches of 2 or more consecutive residues without any outlier are shown as a green connector. Residues present in the sample, but not in the model, are shown in grey.

#### • Molecule 1: OxaC



## 4 Data and refinement statistics

Property	Value	Source
Space group	I 4 2 2	Depositor
Cell constants a, b, c, $\alpha$ , $\beta$ , $\gamma$	162.88 Å   162.88 Å   90.04 Å 90.00°   90.00°   90.00°	Depositor
Resolution (Å)	46.49 – 2.50 46.49 – 2.50	Depositor EDS
% Data completeness (in resolution range)	99.9 (46.49-2.50) 99.9 (46.49-2.50)	Depositor EDS
$R_{merge}$	0.13	Depositor
$R_{sym}$	(Not available)	Depositor
$\langle I/\sigma(I) \rangle$ <sup>1</sup>	1.47 (at 2.51 Å)	Xtriage
Refinement program	PHENIX 1.11.1_2575, PHENIX	Depositor
R, $R_{free}$	0.219 , 0.251 0.224 , 0.249	Depositor DCC
$R_{free}$ test set	1007 reflections (4.73%)	wwPDB-VP
Wilson B-factor (Å <sup>2</sup> )	59.1	Xtriage
Anisotropy	0.214	Xtriage
Bulk solvent $k_{sol}$ (e/Å <sup>3</sup> ), $B_{sol}$ (Å <sup>2</sup> )	0.36 , 53.7	EDS
L-test for twinning <sup>2</sup>	$\langle  L  \rangle = 0.48$ , $\langle L^2 \rangle = 0.32$	Xtriage
Estimated twinning fraction	No twinning to report.	Xtriage
$F_o, F_c$ correlation	0.95	EDS
Total number of atoms	3096	wwPDB-VP
Average B, all atoms (Å <sup>2</sup> )	70.0	wwPDB-VP

Xtriage's analysis on translational NCS is as follows: *The largest off-origin peak in the Patterson function is 4.81% of the height of the origin peak. No significant pseudotranslation is detected.*

<sup>1</sup>Intensities estimated from amplitudes.

<sup>2</sup>Theoretical values of  $\langle |L| \rangle$ ,  $\langle L^2 \rangle$  for acentric reflections are 0.5, 0.333 respectively for untwinned datasets, and 0.375, 0.2 for perfectly twinned datasets.

## 5 Model quality [i](#)

### 5.1 Standard geometry [i](#)

Bond lengths and bond angles in the following residue types are not validated in this section: SAH, 9Z7

The Z score for a bond length (or angle) is the number of standard deviations the observed value is removed from the expected value. A bond length (or angle) with  $|Z| > 5$  is considered an outlier worth inspection. RMSZ is the root-mean-square of all Z scores of the bond lengths (or angles).

Mol	Chain	Bond lengths		Bond angles	
		RMSZ	$\# Z  > 5$	RMSZ	$\# Z  > 5$
1	A	0.50	1/3091 (0.0%)	0.61	1/4195 (0.0%)

All (1) bond length outliers are listed below:

Mol	Chain	Res	Type	Atoms	Z	Observed(Å)	Ideal(Å)
1	A	147	CYS	CB-SG	-6.66	1.71	1.82

All (1) bond angle outliers are listed below:

Mol	Chain	Res	Type	Atoms	Z	Observed(°)	Ideal(°)
1	A	26	ARG	NE-CZ-NH1	5.31	122.95	120.30

There are no chirality outliers.

There are no planarity outliers.

### 5.2 Too-close contacts [i](#)

In the following table, the Non-H and H(model) columns list the number of non-hydrogen atoms and hydrogen atoms in the chain respectively. The H(added) column lists the number of hydrogen atoms added and optimized by MolProbity. The Clashes column lists the number of clashes within the asymmetric unit, whereas Symm-Clashes lists symmetry related clashes.

Mol	Chain	Non-H	H(model)	H(added)	Clashes	Symm-Clashes
1	A	3027	0	2962	71	0
2	A	33	0	0	0	0
3	A	26	0	19	3	0
4	A	10	0	0	0	0
All	All	3096	0	2981	71	0



The all-atom clashscore is defined as the number of clashes found per 1000 atoms (including hydrogen atoms). The all-atom clashscore for this structure is 12.

All (71) close contacts within the same asymmetric unit are listed below, sorted by their clash magnitude.

Atom-1	Atom-2	Interatomic distance (Å)	Clash overlap (Å)
1:A:239:LEU:HG	1:A:305:ILE:HD11	1.44	0.99
1:A:268:GLN:HE22	1:A:298:GLN:HE22	1.14	0.93
1:A:334:ARG:HA	1:A:404:LEU:HD13	1.63	0.79
1:A:293:PHE:CD1	1:A:324:ILE:HD12	2.21	0.75
1:A:281:LEU:HB3	1:A:286:ILE:HD11	1.69	0.74
1:A:176:THR:HG23	1:A:178:ARG:H	1.55	0.72
1:A:301:HIS:HA	1:A:331:ALA:HB1	1.76	0.68
1:A:263:CYS:SG	1:A:264:ARG:N	2.66	0.67
1:A:339:ILE:HG23	1:A:402:ALA:HB3	1.77	0.65
1:A:239:LEU:CG	1:A:305:ILE:HD11	2.25	0.62
1:A:387:VAL:HB	1:A:401:GLU:HG2	1.82	0.62
1:A:229:LEU:HD21	1:A:263:CYS:SG	2.42	0.60
1:A:308:PHE:CD2	1:A:339:ILE:HD11	2.38	0.59
1:A:246:HIS:HA	1:A:277:HIS:ND1	2.18	0.58
1:A:255:ALA:O	1:A:256:LEU:HG	2.05	0.56
1:A:281:LEU:HB3	1:A:286:ILE:CD1	2.36	0.56
1:A:70:LYS:NZ	1:A:120:GLY:HA2	2.21	0.55
1:A:404:LEU:H	1:A:404:LEU:HD12	1.72	0.55
1:A:176:THR:HG22	1:A:179:ASN:HB3	1.88	0.55
1:A:178:ARG:HD3	1:A:190:GLY:O	2.07	0.54
1:A:298:GLN:HE21	1:A:300:VAL:H	1.55	0.53
1:A:116:VAL:HA	1:A:120:GLY:HA3	1.90	0.53
1:A:264:ARG:NH1	1:A:287:GLU:OE2	2.42	0.52
1:A:268:GLN:NE2	1:A:298:GLN:HE22	1.96	0.52
1:A:194:PHE:CD2	3:A:502:SAH:H8	2.45	0.51
1:A:93:MET:HG2	1:A:98:ILE:HG13	1.91	0.51
1:A:218:ILE:HG23	1:A:397:MET:HG3	1.93	0.50
1:A:270:LEU:HD21	3:A:502:SAH:C6	2.42	0.49
1:A:178:ARG:HB3	1:A:190:GLY:O	2.12	0.49
1:A:19:GLU:HB3	1:A:46:LYS:HD3	1.95	0.48
1:A:243:ALA:HB3	1:A:311:VAL:HG11	1.96	0.48
1:A:305:ILE:HD13	1:A:307:TYR:HB2	1.96	0.48
1:A:239:LEU:HD11	1:A:253:ILE:HD13	1.96	0.48
1:A:229:LEU:O	1:A:229:LEU:HD23	2.14	0.47
1:A:226:GLU:OE1	1:A:259:LYS:HG2	2.13	0.47
1:A:308:PHE:HD2	1:A:339:ILE:HD11	1.79	0.47
1:A:308:PHE:CD1	1:A:311:VAL:HG21	2.50	0.47

*Continued on next page...*

*Continued from previous page...*

Atom-1	Atom-2	Interatomic distance (Å)	Clash overlap (Å)
1:A:64:SER:HB2	1:A:65:MET:HE1	1.96	0.47
1:A:78:PHE:CE2	1:A:149:PRO:HG3	2.50	0.47
1:A:305:ILE:C	1:A:305:ILE:HD12	2.34	0.47
1:A:286:ILE:HD12	1:A:286:ILE:C	2.36	0.46
1:A:264:ARG:HG3	1:A:264:ARG:HH11	1.80	0.46
1:A:308:PHE:CE2	1:A:339:ILE:HD11	2.50	0.46
1:A:133:THR:O	1:A:137:GLU:HG3	2.16	0.46
1:A:205:ALA:HB3	1:A:206:PRO:HD3	1.98	0.46
1:A:268:GLN:HE22	1:A:298:GLN:NE2	1.96	0.46
1:A:293:PHE:CD1	1:A:324:ILE:CD1	2.97	0.45
1:A:338:ARG:NH1	1:A:387:VAL:HG11	2.31	0.45
1:A:266:ILE:HD13	1:A:300:VAL:HG21	1.98	0.45
1:A:243:ALA:HB1	3:A:502:SAH:O4'	2.16	0.45
1:A:274:ILE:HG23	1:A:288:PRO:HB2	2.00	0.44
1:A:252:ALA:HA	1:A:255:ALA:HB3	1.99	0.44
1:A:405:LYS:HE2	1:A:405:LYS:HB2	1.80	0.44
1:A:298:GLN:HE21	1:A:300:VAL:N	2.16	0.44
1:A:311:VAL:HG23	1:A:312:PHE:CD1	2.53	0.44
1:A:311:VAL:HG23	1:A:312:PHE:N	2.33	0.44
1:A:298:GLN:HB2	1:A:328:THR:HG22	2.00	0.43
1:A:274:ILE:O	1:A:278:SER:HB3	2.18	0.43
1:A:370:ARG:HB2	1:A:375:PHE:CE2	2.54	0.43
1:A:87:PRO:HG2	1:A:91:ALA:O	2.17	0.43
1:A:308:PHE:HB3	1:A:311:VAL:CG2	2.48	0.43
1:A:388:LYS:HD3	1:A:390:TRP:CZ2	2.53	0.42
1:A:246:HIS:O	1:A:281:LEU:HD21	2.20	0.42
1:A:298:GLN:NE2	1:A:300:VAL:H	2.18	0.41
1:A:223:TYR:CD1	1:A:224:PRO:HD2	2.55	0.41
1:A:192:THR:H	1:A:192:THR:HG23	1.62	0.41
1:A:268:GLN:HA	1:A:289:GLN:O	2.20	0.41
1:A:305:ILE:O	1:A:305:ILE:HD12	2.21	0.41
1:A:339:ILE:CG2	1:A:402:ALA:HB3	2.47	0.41
1:A:281:LEU:HD13	1:A:286:ILE:HD11	2.03	0.41
1:A:328:THR:O	1:A:332:MET:HG3	2.21	0.40

There are no symmetry-related clashes.

## 5.3 Torsion angles [i](#)

### 5.3.1 Protein backbone [i](#)

In the following table, the Percentiles column shows the percent Ramachandran outliers of the chain as a percentile score with respect to all X-ray entries followed by that with respect to entries of similar resolution.

The Analysed column shows the number of residues for which the backbone conformation was analysed, and the total number of residues.

Mol	Chain	Analysed	Favoured	Allowed	Outliers	Percentiles	
1	A	392/429 (91%)	370 (94%)	21 (5%)	1 (0%)	41	61

All (1) Ramachandran outliers are listed below:

Mol	Chain	Res	Type
1	A	258	PRO

### 5.3.2 Protein sidechains [i](#)

In the following table, the Percentiles column shows the percent sidechain outliers of the chain as a percentile score with respect to all X-ray entries followed by that with respect to entries of similar resolution.

The Analysed column shows the number of residues for which the sidechain conformation was analysed, and the total number of residues.

Mol	Chain	Analysed	Rotameric	Outliers	Percentiles	
1	A	315/349 (90%)	301 (96%)	14 (4%)	28	52

All (14) residues with a non-rotameric sidechain are listed below:

Mol	Chain	Res	Type
1	A	9	GLN
1	A	26	ARG
1	A	37	ASP
1	A	65	MET
1	A	92	SER
1	A	147	CYS
1	A	231	ASP
1	A	271	GLU
1	A	293	PHE
1	A	313	HIS

*Continued on next page...*

*Continued from previous page...*

Mol	Chain	Res	Type
1	A	323	LYS
1	A	338	ARG
1	A	354	SER
1	A	405	LYS

Some sidechains can be flipped to improve hydrogen bonding and reduce clashes. All (2) such sidechains are listed below:

Mol	Chain	Res	Type
1	A	9	GLN
1	A	298	GLN

### 5.3.3 RNA ⓘ

There are no RNA molecules in this entry.

## 5.4 Non-standard residues in protein, DNA, RNA chains ⓘ

There are no non-standard protein/DNA/RNA residues in this entry.

## 5.5 Carbohydrates ⓘ

There are no carbohydrates in this entry.

## 5.6 Ligand geometry ⓘ

2 ligands are modelled in this entry.

In the following table, the Counts columns list the number of bonds (or angles) for which Mogul statistics could be retrieved, the number of bonds (or angles) that are observed in the model and the number of bonds (or angles) that are defined in the Chemical Component Dictionary. The Link column lists molecule types, if any, to which the group is linked. The Z score for a bond length (or angle) is the number of standard deviations the observed value is removed from the expected value. A bond length (or angle) with  $|Z| > 2$  is considered an outlier worth inspection. RMSZ is the root-mean-square of all Z scores of the bond lengths (or angles).

Mol	Type	Chain	Res	Link	Bond lengths			Bond angles		
					Counts	RMSZ	# Z  > 2	Counts	RMSZ	# Z  > 2
2	9Z7	A	501	-	28,37,37	3.05	4 (14%)	29,59,59	4.26	14 (48%)
3	SAH	A	502	-	21,28,28	1.21	2 (9%)	20,40,40	1.50	3 (15%)

In the following table, the Chirals column lists the number of chiral outliers, the number of chiral centers analysed, the number of these observed in the model and the number defined in the Chemical Component Dictionary. Similar counts are reported in the Torsion and Rings columns. '-' means no outliers of that kind were identified.

Mol	Type	Chain	Res	Link	Chirals	Torsions	Rings
2	9Z7	A	501	-	-	6/18/77/77	0/5/5/5
3	SAH	A	502	-	-	2/7/31/31	0/3/3/3

All (6) bond length outliers are listed below:

Mol	Chain	Res	Type	Atoms	Z	Observed(Å)	Ideal(Å)
2	A	501	9Z7	C25-C24	12.23	1.50	1.34
2	A	501	9Z7	O15-N14	-7.32	1.29	1.40
2	A	501	9Z7	O21-C20	5.55	1.45	1.35
3	A	502	SAH	C2-N3	3.94	1.38	1.32
2	A	501	9Z7	O32-C31	3.09	1.29	1.23
3	A	502	SAH	C2-N1	2.69	1.38	1.33

All (17) bond angle outliers are listed below:

Mol	Chain	Res	Type	Atoms	Z	Observed(°)	Ideal(°)
2	A	501	9Z7	C16-O15-N14	15.70	126.55	109.58
2	A	501	9Z7	C13-N33-C31	-10.41	104.74	113.99
2	A	501	9Z7	C24-C31-N33	5.55	114.06	105.36
2	A	501	9Z7	O21-C20-C23	-5.31	117.40	126.36
2	A	501	9Z7	O21-C20-C18	5.18	119.60	111.91
3	A	502	SAH	N3-C2-N1	-4.85	121.10	128.68
2	A	501	9Z7	C7-C8-C11	3.71	113.93	109.22
2	A	501	9Z7	O32-C31-N33	-3.27	121.49	126.75
2	A	501	9Z7	O32-C31-C24	-2.96	124.45	128.31
2	A	501	9Z7	C26-C27-N28	-2.90	103.39	108.62
2	A	501	9Z7	C27-N28-C29	2.74	110.05	105.78
2	A	501	9Z7	C7-C6-C1	2.66	111.64	108.10
2	A	501	9Z7	C9-C8-C10	-2.30	104.78	107.99
3	A	502	SAH	O2'-C2'-C3'	2.17	118.84	111.82
2	A	501	9Z7	C13-C7-C6	-2.06	98.30	101.00
2	A	501	9Z7	C8-C11-C12	-2.03	121.63	127.56
3	A	502	SAH	C4-C5-N7	-2.03	107.28	109.40

There are no chirality outliers.

All (8) torsion outliers are listed below:

Mol	Chain	Res	Type	Atoms
2	A	501	9Z7	C12-C11-C8-C10
2	A	501	9Z7	C12-C11-C8-C7
2	A	501	9Z7	C12-C11-C8-C9
2	A	501	9Z7	C18-C20-O21-C22
2	A	501	9Z7	C23-C20-O21-C22
2	A	501	9Z7	C24-C25-C26-N30
3	A	502	SAH	N-CA-CB-CG
3	A	502	SAH	C-CA-CB-CG

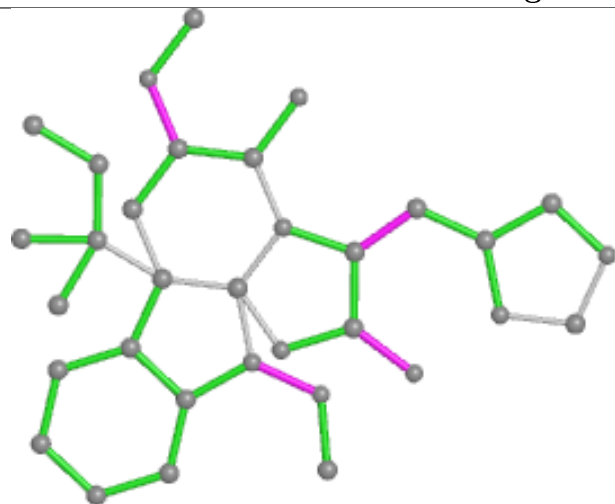
There are no ring outliers.

1 monomer is involved in 3 short contacts:

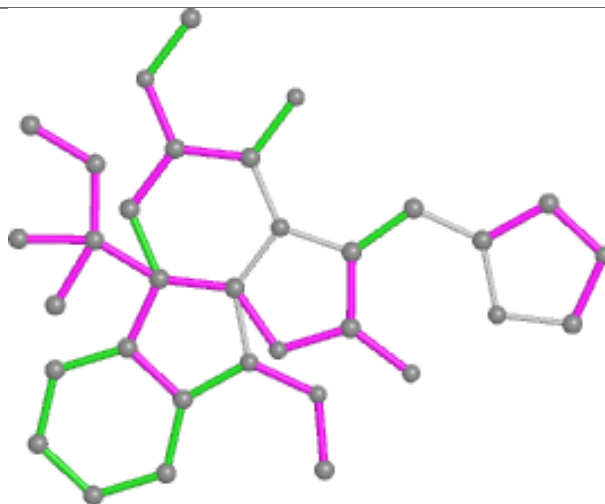
Mol	Chain	Res	Type	Clashes	Symm-Clashes
3	A	502	SAH	3	0

The following is a two-dimensional graphical depiction of Mogul quality analysis of bond lengths, bond angles, torsion angles, and ring geometry for all instances of the Ligand of Interest. In addition, ligands with molecular weight > 250 and outliers as shown on the validation Tables will also be included. For torsion angles, if less than 5% of the Mogul distribution of torsion angles is within 10 degrees of the torsion angle in question, then that torsion angle is considered an outlier. Any bond that is central to one or more torsion angles identified as an outlier by Mogul will be highlighted in the graph. For rings, the root-mean-square deviation (RMSD) between the ring in question and similar rings identified by Mogul is calculated over all ring torsion angles. If the average RMSD is greater than 60 degrees and the minimal RMSD between the ring in question and any Mogul-identified rings is also greater than 60 degrees, then that ring is considered an outlier. The outliers are highlighted in purple. The color gray indicates Mogul did not find sufficient equivalents in the CSD to analyse the geometry.

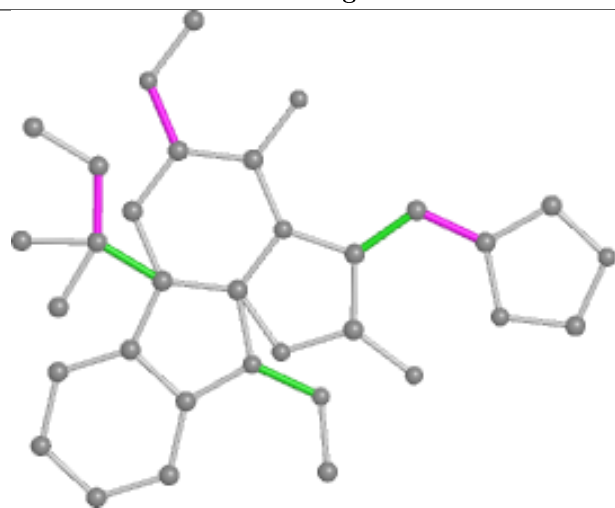
## Ligand 9Z7 A 501



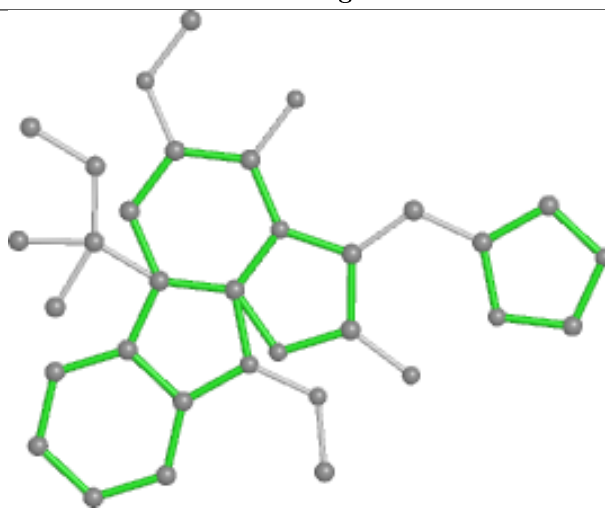
Bond lengths



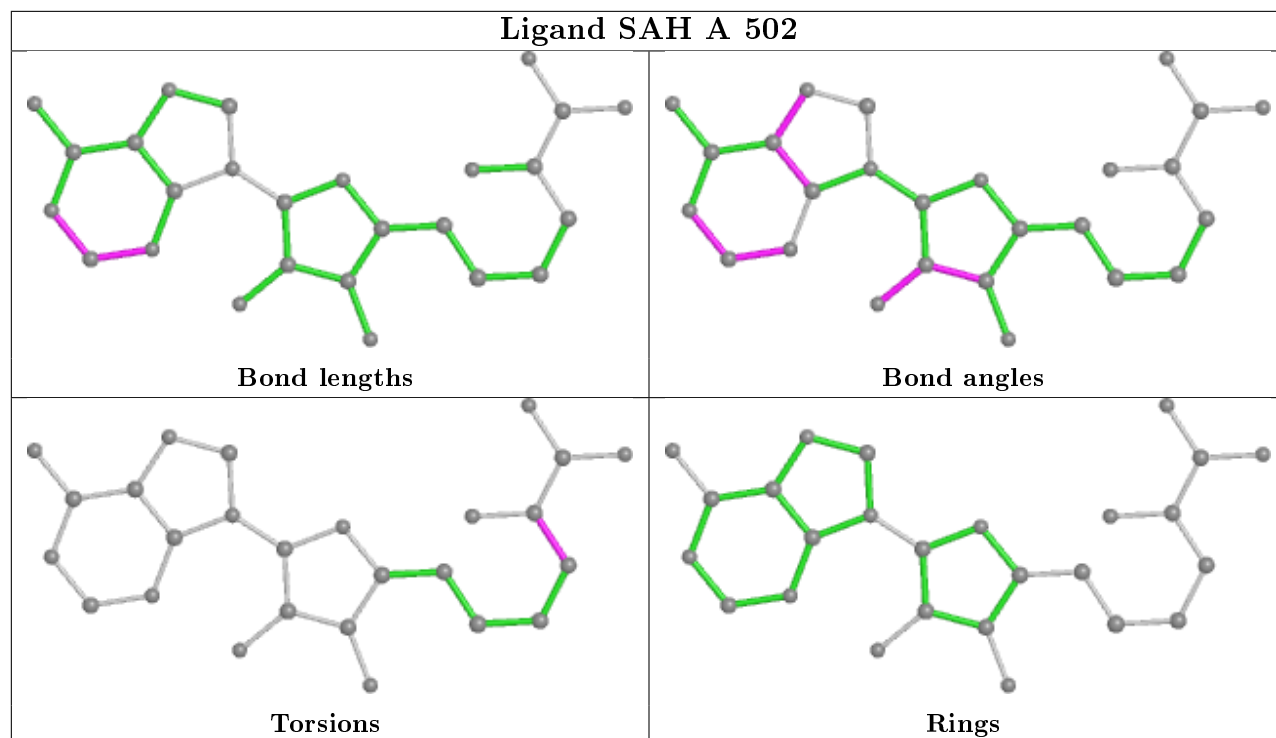
Bond angles



Torsions



Rings



## 5.7 Other polymers [i](#)

There are no such residues in this entry.

## 5.8 Polymer linkage issues [i](#)

There are no chain breaks in this entry.



## 6 Fit of model and data [i](#)

### 6.1 Protein, DNA and RNA chains [i](#)

In the following table, the column labelled ‘#RSRZ> 2’ contains the number (and percentage) of RSRZ outliers, followed by percent RSRZ outliers for the chain as percentile scores relative to all X-ray entries and entries of similar resolution. The OWAB column contains the minimum, median, 95<sup>th</sup> percentile and maximum values of the occupancy-weighted average B-factor per residue. The column labelled ‘Q< 0.9’ lists the number of (and percentage) of residues with an average occupancy less than 0.9.

Mol	Chain	Analysed	<RSRZ>	#RSRZ>2	OWAB(Å <sup>2</sup> )	Q<0.9
1	A	396/429 (92%)	0.41	21 (5%) 26 28	40, 65, 110, 145	0

All (21) RSRZ outliers are listed below:

Mol	Chain	Res	Type	RSRZ
1	A	255	ALA	8.6
1	A	386	LEU	5.9
1	A	405	LYS	5.0
1	A	261	ASN	4.9
1	A	229	LEU	3.7
1	A	232	ALA	3.6
1	A	256	LEU	3.5
1	A	230	SER	3.5
1	A	26	ARG	3.1
1	A	236	ASN	2.9
1	A	390	TRP	2.8
1	A	385	ALA	2.7
1	A	302	GLY	2.6
1	A	306	TYR	2.6
1	A	383	GLY	2.4
1	A	263	CYS	2.4
1	A	403	ARG	2.3
1	A	335	GLU	2.3
1	A	235	SER	2.2
1	A	384	LEU	2.2
1	A	222	LEU	2.1

### 6.2 Non-standard residues in protein, DNA, RNA chains [i](#)

There are no non-standard protein/DNA/RNA residues in this entry.

### 6.3 Carbohydrates [i](#)

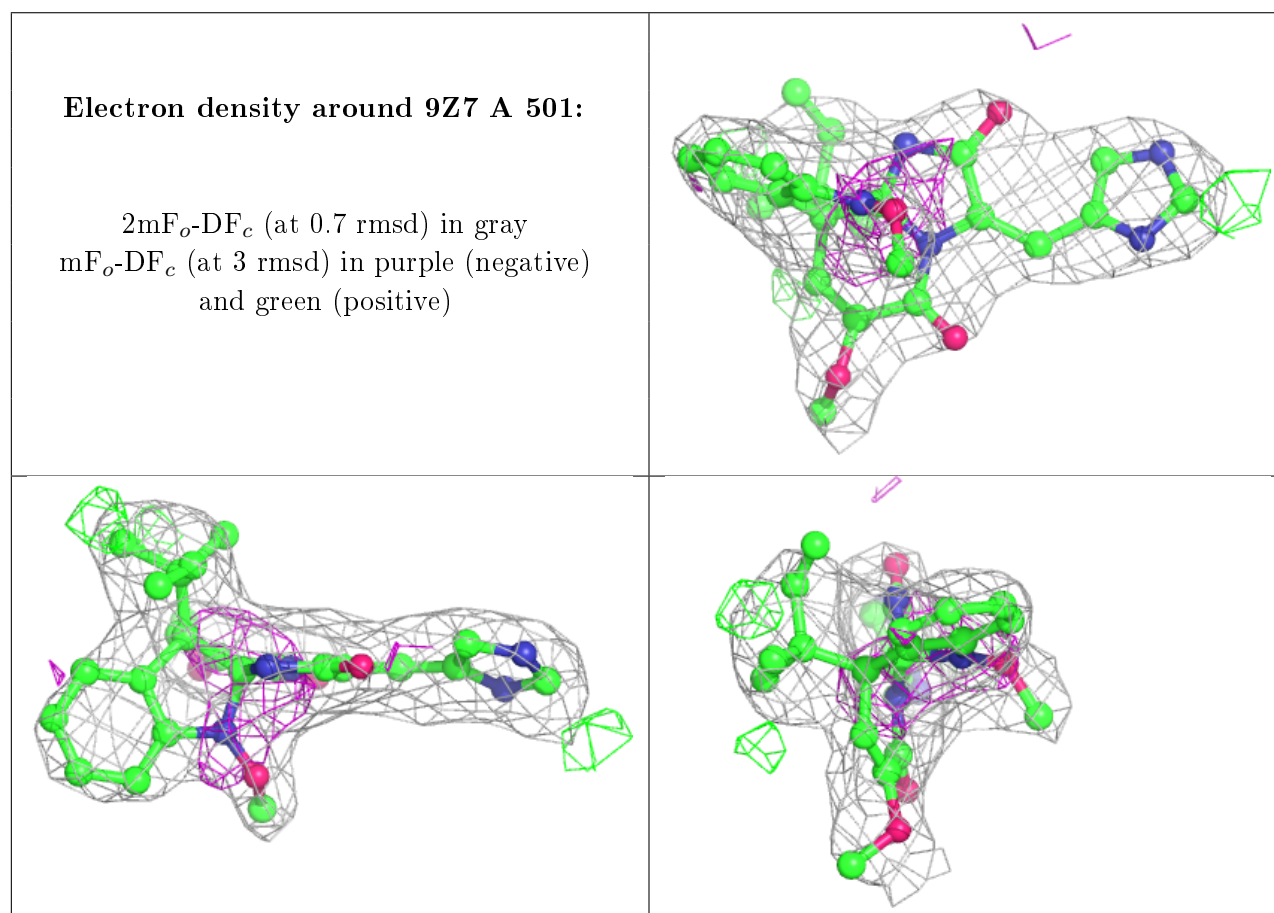
There are no carbohydrates in this entry.

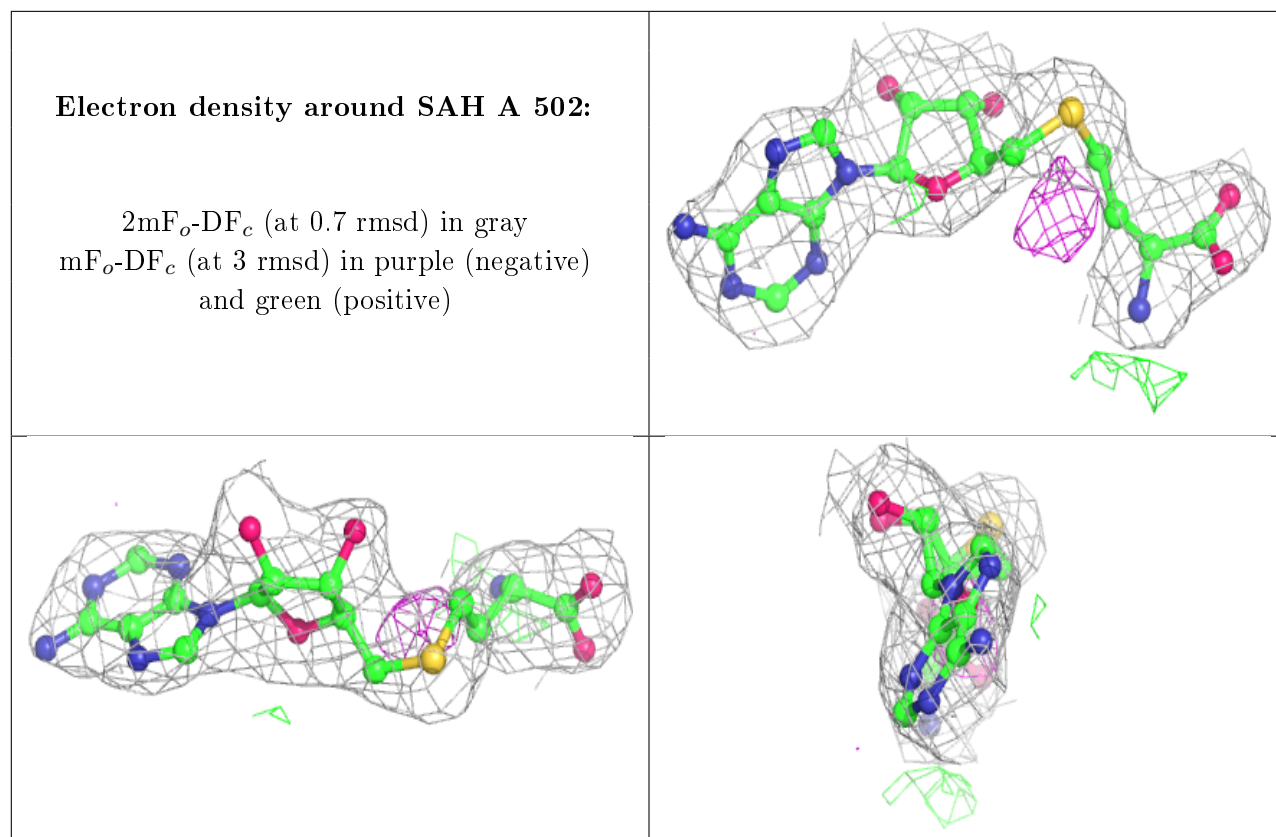
### 6.4 Ligands [i](#)

In the following table, the Atoms column lists the number of modelled atoms in the group and the number defined in the chemical component dictionary. The B-factors column lists the minimum, median, 95<sup>th</sup> percentile and maximum values of B factors of atoms in the group. The column labelled 'Q< 0.9' lists the number of atoms with occupancy less than 0.9.

Mol	Type	Chain	Res	Atoms	RSCC	RSR	B-factors(Å <sup>2</sup> )	Q<0.9
2	9Z7	A	501	33/33	0.89	0.20	60,75,83,85	0
3	SAH	A	502	26/26	0.94	0.15	59,67,77,80	0

The following is a graphical depiction of the model fit to experimental electron density of all instances of the Ligand of Interest. In addition, ligands with molecular weight > 250 and outliers as shown on the geometry validation Tables will also be included. Each fit is shown from different orientation to approximate a three-dimensional view.





## 6.5 Other polymers [i](#)

There are no such residues in this entry.