



Full wwPDB X-ray Structure Validation Report ⓘ

Aug 9, 2020 – 02:32 AM BST

PDB ID : 6W8V
Title : Crystal structure of mouse DNMT1 in complex with ACG DNA
Authors : Anteneh, H.; Song, J.
Deposited on : 2020-03-21
Resolution : 3.12 Å(reported)

This is a Full wwPDB X-ray Structure Validation Report for a publicly released PDB entry.

We welcome your comments at validation@mail.wwpdb.org

A user guide is available at

<https://www.wwpdb.org/validation/2017/XrayValidationReportHelp>

with specific help available everywhere you see the ⓘ symbol.

The following versions of software and data (see [references ⓘ](#)) were used in the production of this report:

MolProbity : 4.02b-467
Mogul : 1.8.5 (274361), CSD as541be (2020)
Xtriage (Phenix) : 1.13
EDS : 2.13.1
buster-report : 1.1.7 (2018)
Percentile statistics : 20191225.v01 (using entries in the PDB archive December 25th 2019)
Refmac : 5.8.0158
CCP4 : 7.0.044 (Gargrove)
Ideal geometry (proteins) : Engh & Huber (2001)
Ideal geometry (DNA, RNA) : Parkinson et al. (1996)
Validation Pipeline (wwPDB-VP) : 2.13.1

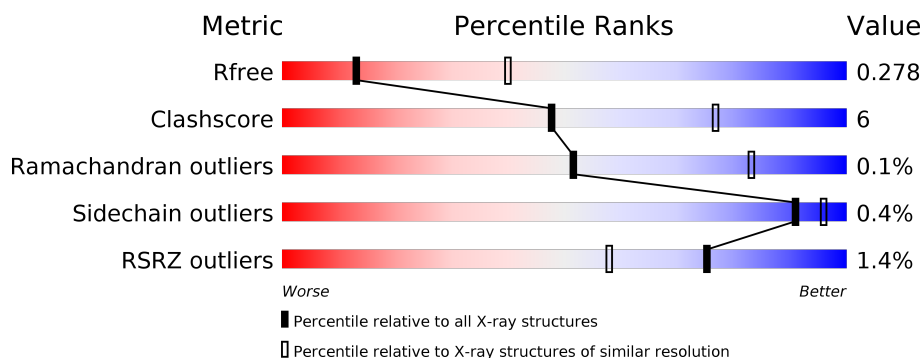
1 Overall quality at a glance

The following experimental techniques were used to determine the structure:

X-RAY DIFFRACTION

The reported resolution of this entry is 3.12 Å.

Percentile scores (ranging between 0-100) for global validation metrics of the entry are shown in the following graphic. The table shows the number of entries on which the scores are based.



Metric	Whole archive (#Entries)	Similar resolution (#Entries, resolution range(Å))
R_{free}	130704	1292 (3.14-3.10)
Clashscore	141614	1389 (3.14-3.10)
Ramachandran outliers	138981	1337 (3.14-3.10)
Sidechain outliers	138945	1337 (3.14-3.10)
RSRZ outliers	127900	1260 (3.14-3.10)

The table below summarises the geometric issues observed across the polymeric chains and their fit to the electron density. The red, orange, yellow and green segments on the lower bar indicate the fraction of residues that contain outliers for ≥ 3 , 2, 1 and 0 types of geometric quality criteria respectively. A grey segment represents the fraction of residues that are not modelled. The numeric value for each fraction is indicated below the corresponding segment, with a dot representing fractions $\leq 5\%$. The upper red bar (where present) indicates the fraction of residues that have poor fit to the electron density. The numeric value is given above the bar.

Mol	Chain	Length	Quality of chain
1	A	873	<div> <div>%</div> <div> <div></div> <div>80%</div> <div>15%</div> <div>5%</div> </div> </div>
1	B	873	<div> <div>%</div> <div> <div></div> <div>82%</div> <div>13%</div> <div>5%</div> </div> </div>
2	C	12	<div> <div></div> <div> <div>42%</div> <div>50%</div> <div>8%</div> </div> </div>
2	E	12	<div> <div></div> <div> <div>25%</div> <div>67%</div> <div>8%</div> </div> </div>
3	D	12	<div> <div></div> <div> <div>42%</div> <div>42%</div> <div>17%</div> </div> </div>
3	F	12	<div> <div></div> <div> <div>58%</div> <div>33%</div> <div>8%</div> </div> </div>

2 Entry composition

There are 5 unique types of molecules in this entry. The entry contains 13955 atoms, of which 0 are hydrogens and 0 are deuteriums.

In the tables below, the ZeroOcc column contains the number of atoms modelled with zero occupancy, the AltConf column contains the number of residues with at least one atom in alternate conformation and the Trace column contains the number of residues modelled with at most 2 atoms.

- Molecule 1 is a protein called DNA (cytosine-5)-methyltransferase 1.

Mol	Chain	Residues	Atoms					ZeroOcc	AltConf	Trace
1	A	831	Total	C	N	O	S	0	0	0
			6493	4127	1133	1192	41			
1	B	825	Total	C	N	O	S	0	1	0
			6428	4082	1128	1179	39			

There are 2 discrepancies between the modelled and reference sequences:

Chain	Residue	Modelled	Actual	Comment	Reference
A	730	SER	-	expression tag	UNP P13864
B	730	SER	-	expression tag	UNP P13864

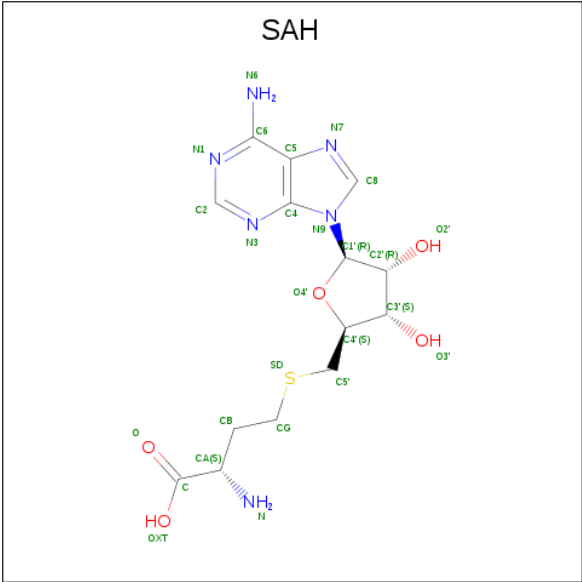
- Molecule 2 is a DNA chain called ACG DNA (5'-D(*CP*CP*TP*TP*CP*(5CM)P*GP*TP*AP*AP*GP*T)-3').

Mol	Chain	Residues	Atoms					ZeroOcc	AltConf	Trace
2	C	12	Total	C	N	O	P	0	0	0
			240	117	40	72	11			
2	E	12	Total	C	N	O	P	0	0	0
			240	117	40	72	11			

- Molecule 3 is a DNA chain called ACG DNA (5'-D(*AP*CP*TP*TP*AP*(C49)P*GP*GP*AP*AP*GP*G)-3').

Mol	Chain	Residues	Atoms					ZeroOcc	AltConf	Trace
3	D	12	Total	C	F	N	O	P	0	0
			249	119	1	50	68	11		
3	F	12	Total	C	F	N	O	P	0	0
			249	119	1	50	68	11		

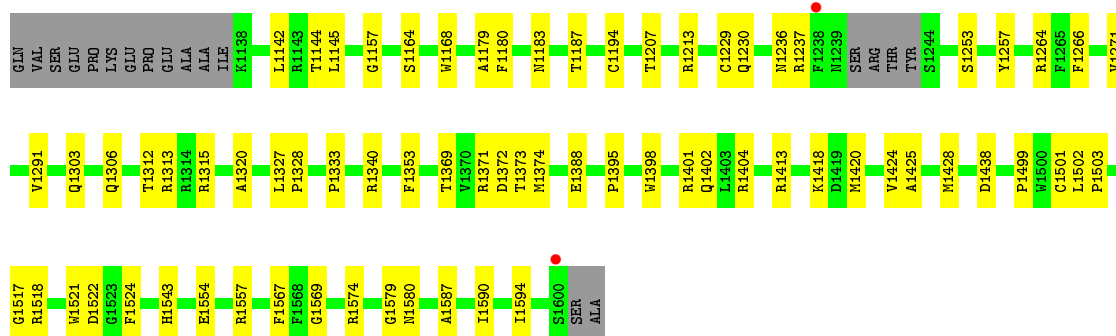
- Molecule 4 is S-ADENOSYL-L-HOMOCYSTEINE (three-letter code: SAH) (formula: C₁₄H₂₀N₆O₅S) (labeled as "Ligand of Interest" by author).



Mol	Chain	Residues	Atoms					ZeroOcc	AltConf
4	A	1	Total	C	N	O	S	0	0
			26	14	6	5	1		
4	B	1	Total	C	N	O	S	0	0
			26	14	6	5	1		

- Molecule 5 is ZINC ION (three-letter code: ZN) (formula: Zn).

Mol	Chain	Residues	Atoms		ZeroOcc	AltConf
5	B	2	Total	Zn	0	0
			2	2		
5	A	2	Total	Zn	0	0
			2	2		



- Molecule 2: ACG DNA (5'-D(*CP*CP*TP*TP*CP*(5CM)P*GP*TP*AP*AP*GP*T)-3')



- Molecule 2: ACG DNA (5'-D(*CP*CP*TP*TP*CP*(5CM)P*GP*TP*AP*AP*GP*T)-3')



- Molecule 3: ACG DNA (5'-D(*AP*CP*TP*TP*AP*(C49)P*GP*GP*AP*AP*GP*G)-3')



- Molecule 3: ACG DNA (5'-D(*AP*CP*TP*TP*AP*(C49)P*GP*GP*AP*AP*GP*G)-3')



4 Data and refinement statistics

Property	Value	Source
Space group	P 1 21 1	Depositor
Cell constants a, b, c, α , β , γ	89.24Å 152.15Å 96.05Å 90.00° 94.29° 90.00°	Depositor
Resolution (Å)	48.47 – 3.12 48.47 – 3.12	Depositor EDS
% Data completeness (in resolution range)	99.0 (48.47-3.12) 99.0 (48.47-3.12)	Depositor EDS
R_{merge}	0.39	Depositor
R_{sym}	(Not available)	Depositor
$\langle I/\sigma(I) \rangle$ ¹	1.15 (at 3.12Å)	Xtriage
Refinement program	PHENIX 1.15.2_3472	Depositor
R, R_{free}	0.246 , 0.278 0.246 , 0.278	Depositor DCC
R_{free} test set	2000 reflections (4.43%)	wwPDB-VP
Wilson B-factor (Å ²)	67.9	Xtriage
Anisotropy	0.547	Xtriage
Bulk solvent k_{sol} (e/Å ³), B_{sol} (Å ²)	0.30 , 22.4	EDS
L-test for twinning ²	$\langle L \rangle = 0.43$, $\langle L^2 \rangle = 0.25$	Xtriage
Estimated twinning fraction	No twinning to report.	Xtriage
F_o, F_c correlation	0.90	EDS
Total number of atoms	13955	wwPDB-VP
Average B, all atoms (Å ²)	80.0	wwPDB-VP

Xtriage's analysis on translational NCS is as follows: *The largest off-origin peak in the Patterson function is 6.64% of the height of the origin peak. No significant pseudotranslation is detected.*

¹Intensities estimated from amplitudes.

²Theoretical values of $\langle |L| \rangle$, $\langle L^2 \rangle$ for acentric reflections are 0.5, 0.333 respectively for untwinned datasets, and 0.375, 0.2 for perfectly twinned datasets.

5 Model quality [i](#)

5.1 Standard geometry [i](#)

Bond lengths and bond angles in the following residue types are not validated in this section: ZN, SAH, C49, 5CM

The Z score for a bond length (or angle) is the number of standard deviations the observed value is removed from the expected value. A bond length (or angle) with $|Z| > 5$ is considered an outlier worth inspection. RMSZ is the root-mean-square of all Z scores of the bond lengths (or angles).

Mol	Chain	Bond lengths		Bond angles	
		RMSZ	# Z >5	RMSZ	# Z >5
1	A	0.27	0/6666	0.46	0/9058
1	B	0.26	0/6600	0.44	0/8979
2	C	0.73	0/244	1.17	1/372 (0.3%)
2	E	0.71	0/244	1.01	0/372
3	D	0.72	0/256	1.09	1/392 (0.3%)
3	F	0.62	0/256	0.92	0/392
All	All	0.31	0/14266	0.52	2/19565 (0.0%)

There are no bond length outliers.

All (2) bond angle outliers are listed below:

Mol	Chain	Res	Type	Atoms	Z	Observed(°)	Ideal(°)
3	D	13	DA	O4'-C1'-N9	-8.15	102.29	108.00
2	C	11	DG	O4'-C1'-N9	6.02	112.21	108.00

There are no chirality outliers.

There are no planarity outliers.

5.2 Too-close contacts [i](#)

In the following table, the Non-H and H(model) columns list the number of non-hydrogen atoms and hydrogen atoms in the chain respectively. The H(added) column lists the number of hydrogen atoms added and optimized by MolProbity. The Clashes column lists the number of clashes within the asymmetric unit, whereas Symm-Clashes lists symmetry related clashes.

Mol	Chain	Non-H	H(model)	H(added)	Clashes	Symm-Clashes
1	A	6493	0	6154	76	0
1	B	6428	0	6057	67	0
2	C	240	0	140	6	0

Continued on next page...

Continued from previous page...

Mol	Chain	Non-H	H(model)	H(added)	Clashes	Symm-Clashes
2	E	240	0	140	13	0
3	D	249	0	136	13	0
3	F	249	0	136	5	0
4	A	26	0	19	1	0
4	B	26	0	19	1	0
5	A	2	0	0	0	0
5	B	2	0	0	0	0
All	All	13955	0	12801	163	0

The all-atom clashscore is defined as the number of clashes found per 1000 atoms (including hydrogen atoms). The all-atom clashscore for this structure is 6.

All (163) close contacts within the same asymmetric unit are listed below, sorted by their clash magnitude.

Atom-1	Atom-2	Interatomic distance (Å)	Clash overlap (Å)
1:A:1229:CYS:SG	3:D:18:C49:C6	2.07	1.39
1:A:1229:CYS:HG	3:D:18:C49:C6	1.65	0.94
1:A:1229:CYS:SG	3:D:18:C49:C5	2.56	0.92
1:A:1229:CYS:HG	3:D:18:C49:C5	1.90	0.84
1:A:1229:CYS:SG	3:D:18:C49:F	2.26	0.83
1:A:1068:GLY:HA3	1:A:1089:LEU:HD23	1.70	0.74
1:A:1229:CYS:SG	3:D:18:C49:N1	2.60	0.73
1:B:1266:PHE:HB3	1:B:1320:ALA:HB3	1.72	0.71
2:E:2:DC:H2"	2:E:3:DT:H72	1.70	0.71
1:B:1569:GLY:O	1:B:1574:ARG:NH1	2.25	0.69
1:B:1230:GLN:O	1:B:1236:ASN:ND2	2.28	0.66
1:A:1065:VAL:HG22	1:A:1086:PHE:HB2	1.79	0.65
1:A:917:GLN:HA	1:A:927:CYS:HA	1.78	0.64
1:A:1266:PHE:HB3	1:A:1320:ALA:HB3	1.79	0.64
1:B:1388:GLU:HG2	1:B:1413:ARG:HG2	1.82	0.62
3:F:22:DA:H2"	3:F:23:DG:H5"	1.80	0.62
1:A:1313:ARG:NH2	1:A:1579:GLY:O	2.35	0.60
1:A:1388:GLU:HG2	1:A:1413:ARG:HG2	1.84	0.59
1:A:837:VAL:HG22	1:A:867:TYR:HB2	1.85	0.59
1:B:981:SER:OG	3:F:15:DT:OP1	2.21	0.58
1:A:799:TRP:HE1	1:A:824:GLU:HG2	1.67	0.58
1:B:985:LYS:NZ	3:F:16:DT:OP2	2.33	0.57
1:A:1445:ILE:HA	1:A:1457:LYS:HE2	1.86	0.56
1:B:1518:ARG:NH2	1:B:1543:HIS:O	2.36	0.56
1:A:1178:GLN:OE1	1:A:1181:ARG:NH1	2.38	0.56
1:B:1374:MET:HG2	1:B:1554:GLU:HG2	1.88	0.56

Continued on next page...

Continued from previous page...

Atom-1	Atom-2	Interatomic distance (Å)	Clash overlap (Å)
1:B:999:ARG:HB3	1:B:1022:TYR:HB2	1.88	0.55
1:A:1373:THR:HG22	1:A:1557:ARG:HB3	1.87	0.55
1:A:755:ILE:HD11	1:A:828:LEU:HD23	1.87	0.55
1:B:990:ASP:OD2	1:B:1340:ARG:NH2	2.39	0.55
1:A:1518:ARG:NH2	1:A:1543:HIS:O	2.36	0.55
1:A:1374:MET:HG2	1:A:1554:GLU:HG2	1.89	0.55
1:B:1418:LYS:HE3	1:B:1420:MET:HE1	1.89	0.55
1:A:1180:PHE:HE1	1:A:1187:THR:HG21	1.71	0.54
1:B:1104:ASN:OD1	1:B:1107:ARG:HD3	2.07	0.54
2:C:2:DC:H2''	2:C:3:DT:H71	1.90	0.54
2:E:9:DA:H1'	2:E:10:DA:C8	2.42	0.54
1:B:1157:GLY:HA3	1:B:1587:ALA:HB3	1.89	0.54
1:A:878:ALA:HB2	1:A:1353:PHE:CD1	2.43	0.53
3:D:13:DA:H2''	3:D:14:DC:O5'	2.08	0.53
1:A:1207:THR:HG22	1:A:1213:ARG:HA	1.91	0.53
2:E:11:DG:H2'	2:E:12:DT:C6	2.44	0.53
1:A:981:SER:OG	3:D:15:DT:OP1	2.28	0.52
1:B:1074:SER:OG	1:B:1077:ASP:OD2	2.26	0.52
1:B:968:VAL:HG21	1:B:976:HIS:CD2	2.44	0.52
1:B:1501:CYS:HB2	2:E:5:DC:H3'	1.92	0.52
1:B:1501:CYS:CB	2:E:5:DC:H3'	2.40	0.52
1:A:1480:SER:OG	1:A:1486:ALA:O	2.27	0.52
1:B:1502:LEU:HB2	1:B:1503:PRO:HD3	1.91	0.52
1:A:1502:LEU:HB2	1:A:1503:PRO:HD3	1.91	0.52
1:B:1145:LEU:HD13	1:B:1168:TRP:HB2	1.91	0.51
1:B:786:TRP:HZ3	1:B:796:HIS:HB2	1.75	0.51
1:B:870:GLN:NE2	1:B:1291:VAL:O	2.41	0.51
1:A:1074:SER:OG	1:A:1077:ASP:OD2	2.28	0.51
1:A:914:VAL:HA	1:A:930:ILE:HG22	1.91	0.51
1:B:1237:ARG:NH1	2:E:6:5CM:H1'	2.26	0.51
1:A:1157:GLY:HA3	1:A:1587:ALA:HB3	1.93	0.51
1:B:1580:ASN:HB3	4:B:1701:SAH:SD	2.51	0.51
1:A:1371:ARG:NH2	1:A:1522:ASP:OD1	2.39	0.51
1:A:1556:ALA:HB1	1:A:1561:PHE:HB2	1.94	0.50
1:B:878:ALA:HB2	1:B:1353:PHE:CD1	2.46	0.50
1:A:1023:LYS:HE2	1:A:1052:ALA:HB2	1.93	0.50
3:D:21:DA:H2''	3:D:22:DA:C8	2.47	0.50
1:B:1041:ASP:OD1	1:B:1401:ARG:NH1	2.43	0.50
2:C:11:DG:H2'	2:C:12:DT:C6	2.46	0.50
1:B:1499:PRO:HB2	1:B:1502:LEU:HG	1.92	0.49
1:A:1091:ALA:O	1:A:1099:PHE:HA	2.12	0.49

Continued on next page...

Continued from previous page...

Atom-1	Atom-2	Interatomic distance (Å)	Clash overlap (Å)
1:A:1151:CYS:HB3	1:A:1577:GLN:HB3	1.95	0.49
1:B:1194:CYS:O	1:B:1257:TYR:OH	2.23	0.49
1:A:1327:LEU:HD12	1:A:1328:PRO:HD2	1.94	0.49
1:A:1303:GLN:HE22	1:A:1312:THR:HG23	1.77	0.48
1:B:1327:LEU:HD12	1:B:1328:PRO:HD2	1.95	0.48
2:C:2:DC:H2''	2:C:3:DT:C7	2.43	0.48
1:A:749:TYR:HA	1:A:786:TRP:HA	1.95	0.48
1:A:1026:ARG:NH2	1:A:1364:PRO:O	2.41	0.48
2:C:9:DA:H4'	2:C:10:DA:H5'	1.96	0.48
2:E:2:DC:H2''	2:E:3:DT:C7	2.41	0.48
1:B:1023:LYS:HE2	1:B:1052:ALA:HB2	1.96	0.48
1:B:837:VAL:HG22	1:B:867:TYR:HB2	1.96	0.48
1:B:1425:ALA:HA	1:B:1428:MET:HE2	1.96	0.48
1:A:986:GLY:HA2	1:A:1524:PHE:CE2	2.49	0.48
2:E:9:DA:OP2	2:E:9:DA:H2'	2.13	0.47
1:B:1313:ARG:NH2	3:F:18:C49:O2	2.47	0.47
1:A:1580:ASN:HB3	4:A:1701:SAH:SD	2.53	0.47
3:D:14:DC:H2''	3:D:15:DT:C6	2.49	0.47
1:B:1018:LYS:NZ	1:B:1055:ASN:OD1	2.38	0.47
1:B:1180:PHE:HE1	1:B:1187:THR:HG21	1.80	0.47
1:A:736:TRP:NE1	1:A:787:GLU:OE1	2.47	0.47
1:B:943:VAL:HG11	1:B:1059:VAL:HG22	1.97	0.47
1:B:1142:LEU:HD21	1:B:1264:ARG:HH21	1.80	0.47
1:B:1373:THR:HG22	1:B:1557:ARG:HB3	1.97	0.46
1:A:1001:LYS:HG2	1:A:1002:GLU:HG3	1.98	0.46
1:A:1238:PHE:CG	1:A:1238:PHE:O	2.68	0.46
1:B:1438:ASP:HA	1:B:1517:GLY:HA2	1.97	0.46
1:B:1207:THR:HG22	1:B:1213:ARG:HA	1.97	0.46
1:B:747:ARG:HB2	1:B:786:TRP:HB2	1.97	0.46
1:B:997:ILE:HD12	1:B:1045:LEU:HD11	1.97	0.46
1:B:1303:GLN:HE22	1:B:1312:THR:HG23	1.79	0.46
2:E:1:DC:H2'	2:E:2:DC:C5	2.51	0.45
2:E:1:DC:H2'	2:E:2:DC:C6	2.52	0.45
1:A:1439:TRP:HB3	1:A:1516:TYR:HB2	1.98	0.45
2:C:9:DA:H2'	2:C:9:DA:OP2	2.16	0.45
1:A:1590:ILE:O	1:A:1594:ILE:HG13	2.17	0.45
1:A:1093:ASN:HB3	1:A:1096:THR:OG1	2.17	0.45
1:A:1041:ASP:OD1	1:A:1401:ARG:NH1	2.50	0.45
1:B:892:ASN:N	1:B:892:ASN:OD1	2.50	0.45
2:C:9:DA:H1'	2:C:10:DA:C8	2.52	0.45
1:B:1070:ASP:OD1	1:B:1107:ARG:NH2	2.49	0.44

Continued on next page...

Continued from previous page...

Atom-1	Atom-2	Interatomic distance (Å)	Clash overlap (Å)
1:A:1196:VAL:O	1:A:1200:LEU:HG	2.18	0.44
1:A:943:VAL:HG23	1:A:1059:VAL:HG13	1.99	0.44
1:A:780:ALA:HB2	1:A:799:TRP:CE3	2.52	0.44
1:A:1238:PHE:HE1	3:D:20:DG:H4'	1.83	0.44
1:A:1002:GLU:HB2	1:A:1020:ARG:HG2	1.98	0.44
1:B:1306:GLN:HB3	1:B:1333:PRO:HB3	2.00	0.44
1:B:870:GLN:O	1:B:871:LEU:HD23	2.18	0.44
1:B:1371:ARG:NH2	1:B:1522:ASP:OD1	2.43	0.44
1:A:1299:PHE:HE2	1:A:1346:VAL:HG11	1.83	0.44
2:E:5:DC:H2''	2:E:6:5CM:O5'	2.18	0.43
1:B:1369:THR:OG1	1:B:1521:TRP:O	2.35	0.43
1:B:1229:CYS:N	3:F:18:C49:F	2.41	0.43
1:B:1144:THR:OG1	1:B:1164:SER:HB2	2.19	0.43
1:A:1238:PHE:CE1	3:D:20:DG:H4'	2.53	0.43
1:A:997:ILE:HD12	1:A:1045:LEU:HD11	2.00	0.43
1:A:1259:ASP:HB2	1:A:1293:MET:HE1	1.99	0.43
1:A:1382:ASN:HD21	1:A:1420:MET:HG2	1.84	0.43
1:A:1499:PRO:HB2	1:A:1502:LEU:HG	2.00	0.43
1:B:1067:TYR:CE2	1:B:1069:GLU:HB2	2.53	0.43
2:E:2:DC:C2'	2:E:3:DT:H72	2.46	0.43
1:A:766:VAL:HG13	1:A:831:ILE:HG23	2.00	0.43
1:B:1395:PRO:HG3	1:B:1404:ARG:HD3	2.01	0.43
1:B:1237:ARG:HH11	2:E:6:5CM:H1'	1.84	0.43
1:A:1449:LEU:HD11	1:A:1455:ALA:HB2	2.01	0.43
1:B:943:VAL:HG13	1:B:1059:VAL:HG13	2.01	0.43
1:B:1271:VAL:HA	1:B:1315:ARG:HD3	2.01	0.43
1:A:1144:THR:OG1	1:A:1164:SER:HB2	2.19	0.42
1:A:1035:ASN:HA	1:A:1038:TYR:CZ	2.54	0.42
1:B:780:ALA:HB2	1:B:799:TRP:CE3	2.54	0.42
1:A:1142:LEU:HD21	1:A:1264:ARG:HH21	1.85	0.42
1:A:1479:CYS:SG	1:A:1480:SER:N	2.92	0.42
1:A:755:ILE:O	1:A:758:GLU:HB2	2.19	0.42
1:B:1424:VAL:O	1:B:1428:MET:HG3	2.19	0.42
1:A:1001:LYS:HD3	1:A:1022:TYR:CZ	2.54	0.42
1:A:1271:VAL:HA	1:A:1315:ARG:HD3	2.02	0.42
1:B:1590:ILE:O	1:B:1594:ILE:HG13	2.19	0.42
1:A:1001:LYS:NZ	1:A:1051:GLU:OE2	2.53	0.42
1:B:986:GLY:HA2	1:B:1524:PHE:CE2	2.55	0.42
1:B:1313:ARG:NH2	1:B:1579:GLY:O	2.52	0.42
1:A:755:ILE:HD11	1:A:828:LEU:HB3	2.02	0.41
1:A:865:LYS:HE2	1:A:867:TYR:CZ	2.54	0.41

Continued on next page...

Continued from previous page...

Atom-1	Atom-2	Interatomic distance (Å)	Clash overlap (Å)
1:B:1369:THR:HG23	1:B:1372:ASP:H	1.85	0.41
1:B:786:TRP:CE2	1:B:794:MET:HB2	2.55	0.41
3:D:21:DA:H2"	3:D:22:DA:H8	1.85	0.41
1:A:1277:TYR:CE2	1:A:1278:ARG:HG3	2.55	0.41
1:A:839:TYR:CE2	1:A:841:ALA:HB2	2.56	0.41
1:B:1398:TRP:O	1:B:1402:GLN:HG2	2.20	0.41
1:B:1567:PHE:HB3	1:B:1574:ARG:HG2	2.03	0.41
1:B:1179:ALA:O	1:B:1183:ASN:ND2	2.44	0.41
1:A:1369:THR:OG1	1:A:1521:TRP:O	2.37	0.40
1:B:743:ILE:HD12	1:B:748:THR:HG22	2.03	0.40
1:A:870:GLN:O	1:A:871:LEU:HD23	2.21	0.40
1:B:1253:SER:O	1:B:1257:TYR:HD1	2.05	0.40
1:A:1168:TRP:CH2	1:A:1219:ASP:HB3	2.56	0.40
1:A:894:HIS:CE1	1:A:895:LYS:HG2	2.56	0.40

There are no symmetry-related clashes.

5.3 Torsion angles [i](#)

5.3.1 Protein backbone [i](#)

In the following table, the Percentiles column shows the percent Ramachandran outliers of the chain as a percentile score with respect to all X-ray entries followed by that with respect to entries of similar resolution.

The Analysed column shows the number of residues for which the backbone conformation was analysed, and the total number of residues.

Mol	Chain	Analysed	Favoured	Allowed	Outliers	Percentiles	
1	A	823/873 (94%)	790 (96%)	31 (4%)	2 (0%)	47	79
1	B	818/873 (94%)	784 (96%)	34 (4%)	0	100	100
All	All	1641/1746 (94%)	1574 (96%)	65 (4%)	2 (0%)	51	83

All (2) Ramachandran outliers are listed below:

Mol	Chain	Res	Type
1	A	1244	SER
1	A	742	LYS

5.3.2 Protein sidechains ⓘ

In the following table, the Percentiles column shows the percent sidechain outliers of the chain as a percentile score with respect to all X-ray entries followed by that with respect to entries of similar resolution.

The Analysed column shows the number of residues for which the sidechain conformation was analysed, and the total number of residues.

Mol	Chain	Analysed	Rotameric	Outliers	Percentiles	
1	A	679/759 (90%)	674 (99%)	5 (1%)	84	93
1	B	668/759 (88%)	668 (100%)	0	100	100
All	All	1347/1518 (89%)	1342 (100%)	5 (0%)	91	96

All (5) residues with a non-rotameric sidechain are listed below:

Mol	Chain	Res	Type
1	A	1238	PHE
1	A	1246	PHE
1	A	1272	ARG
1	A	1466	LYS
1	A	1566	ARG

Some sidechains can be flipped to improve hydrogen bonding and reduce clashes. There are no such sidechains identified.

5.3.3 RNA ⓘ

There are no RNA molecules in this entry.

5.4 Non-standard residues in protein, DNA, RNA chains ⓘ

4 non-standard protein/DNA/RNA residues are modelled in this entry.

In the following table, the Counts columns list the number of bonds (or angles) for which Mogul statistics could be retrieved, the number of bonds (or angles) that are observed in the model and the number of bonds (or angles) that are defined in the Chemical Component Dictionary. The Link column lists molecule types, if any, to which the group is linked. The Z score for a bond length (or angle) is the number of standard deviations the observed value is removed from the expected value. A bond length (or angle) with $|Z| > 2$ is considered an outlier worth inspection. RMSZ is the root-mean-square of all Z scores of the bond lengths (or angles).

Mol	Type	Chain	Res	Link	Bond lengths			Bond angles		
					Counts	RMSZ	# Z > 2	Counts	RMSZ	# Z > 2
2	5CM	C	6	3,2	15,21,22	4.38	10 (66%)	19,30,33	1.55	4 (21%)
3	C49	D	18	3	18,22,24	4.67	9 (50%)	19,33,38	1.49	3 (15%)
2	5CM	E	6	3,2	15,21,22	4.35	10 (66%)	19,30,33	1.61	5 (26%)
3	C49	F	18	3	18,22,24	4.64	9 (50%)	19,33,38	1.50	3 (15%)

In the following table, the Chirals column lists the number of chiral outliers, the number of chiral centers analysed, the number of these observed in the model and the number defined in the Chemical Component Dictionary. Similar counts are reported in the Torsion and Rings columns. '-' means no outliers of that kind were identified.

Mol	Type	Chain	Res	Link	Chirals	Torsions	Rings
2	5CM	C	6	3,2	-	1/4/21/22	0/2/2/2
3	C49	D	18	3	-	4/7/40/46	0/2/2/2
2	5CM	E	6	3,2	-	2/4/21/22	0/2/2/2
3	C49	F	18	3	-	4/7/40/46	0/2/2/2

All (38) bond length outliers are listed below:

Mol	Chain	Res	Type	Atoms	Z	Observed(Å)	Ideal(Å)
3	F	18	C49	C2-N1	9.75	1.49	1.35
3	D	18	C49	C2-N1	9.74	1.49	1.35
2	C	6	5CM	C2'-C3'	-8.14	1.31	1.52
3	D	18	C49	C3'-C4'	-8.01	1.31	1.53
3	D	18	C49	O4'-C4'	7.81	1.62	1.45
2	E	6	5CM	C2'-C3'	-7.79	1.32	1.52
3	F	18	C49	C3'-C4'	-7.79	1.31	1.53
3	F	18	C49	O4'-C4'	7.66	1.62	1.45
2	E	6	5CM	O4'-C4'	-7.39	1.28	1.45
2	C	6	5CM	O4'-C4'	-7.01	1.29	1.45
3	F	18	C49	C2-N3	6.70	1.49	1.38
3	D	18	C49	C2-N3	6.58	1.49	1.38
2	C	6	5CM	O4'-C1'	6.44	1.56	1.42
2	E	6	5CM	O4'-C1'	6.37	1.56	1.42
3	F	18	C49	CM5-C5	6.35	1.64	1.51
2	C	6	5CM	C1'-N1	-6.28	1.30	1.49
3	D	18	C49	CM5-C5	6.25	1.64	1.51
2	E	6	5CM	C1'-N1	-6.24	1.30	1.49
3	D	18	C49	O4'-C1'	-5.11	1.30	1.42
3	F	18	C49	O4'-C1'	-5.10	1.30	1.42
3	D	18	C49	C6-N1	-5.01	1.41	1.46
2	E	6	5CM	C4-N3	4.95	1.42	1.35

Continued on next page...

Continued from previous page...

Mol	Chain	Res	Type	Atoms	Z	Observed(Å)	Ideal(Å)
2	C	6	5CM	C4-N3	4.92	1.42	1.35
3	F	18	C49	C6-N1	-4.83	1.41	1.46
2	C	6	5CM	C2-N3	4.47	1.47	1.38
2	E	6	5CM	C2-N3	4.46	1.47	1.38
3	F	18	C49	F-C5	-4.38	1.34	1.42
3	D	18	C49	F-C5	-4.31	1.34	1.42
2	C	6	5CM	C3'-C4'	3.77	1.63	1.53
2	E	6	5CM	C3'-C4'	3.72	1.63	1.53
2	C	6	5CM	C5-C4	3.55	1.46	1.41
2	E	6	5CM	C5-C4	3.46	1.46	1.41
2	C	6	5CM	C4-N4	3.22	1.42	1.34
2	E	6	5CM	C4-N4	3.18	1.42	1.34
2	E	6	5CM	C6-C5	2.54	1.47	1.40
3	D	18	C49	O3'-C3'	2.54	1.48	1.43
2	C	6	5CM	C6-C5	2.51	1.47	1.40
3	F	18	C49	O3'-C3'	2.47	1.48	1.43

All (15) bond angle outliers are listed below:

Mol	Chain	Res	Type	Atoms	Z	Observed(°)	Ideal(°)
3	F	18	C49	N3-C2-N1	3.70	120.56	116.65
3	D	18	C49	N3-C2-N1	3.52	120.38	116.65
2	C	6	5CM	C2-N3-C4	3.45	120.18	116.02
2	E	6	5CM	C2-N3-C4	3.42	120.15	116.02
3	D	18	C49	C2'-C1'-N1	-3.38	111.48	115.61
3	F	18	C49	C2'-C1'-N1	-3.11	111.81	115.61
2	E	6	5CM	C4'-O4'-C1'	-3.08	102.02	109.45
3	F	18	C49	O2-C2-N1	-2.78	119.61	123.11
3	D	18	C49	O2-C2-N1	-2.71	119.70	123.11
2	C	6	5CM	C2'-C1'-N1	-2.30	108.97	114.27
2	E	6	5CM	N4-C4-N3	2.17	120.10	117.03
2	C	6	5CM	C2'-C3'-C4'	2.16	107.27	102.76
2	C	6	5CM	N4-C4-N3	2.11	120.02	117.03
2	E	6	5CM	C2'-C3'-C4'	2.11	107.16	102.76
2	E	6	5CM	O4'-C1'-C2'	-2.09	102.30	106.25

There are no chirality outliers.

All (11) torsion outliers are listed below:

Mol	Chain	Res	Type	Atoms
2	C	6	5CM	O4'-C1'-N1-C6
3	D	18	C49	O4'-C1'-N1-C6

Continued on next page...

Continued from previous page...

Mol	Chain	Res	Type	Atoms
2	E	6	5CM	O4'-C4'-C5'-O5'
3	F	18	C49	O4'-C1'-N1-C6
3	D	18	C49	C2'-C1'-N1-C6
2	E	6	5CM	C3'-C4'-C5'-O5'
3	D	18	C49	C2'-C1'-N1-C2
3	F	18	C49	C2'-C1'-N1-C6
3	F	18	C49	C2'-C1'-N1-C2
3	D	18	C49	O4'-C1'-N1-C2
3	F	18	C49	O4'-C1'-N1-C2

There are no ring outliers.

3 monomers are involved in 11 short contacts:

Mol	Chain	Res	Type	Clashes	Symm-Clashes
3	D	18	C49	6	0
2	E	6	5CM	3	0
3	F	18	C49	2	0

5.5 Carbohydrates [i](#)

There are no monosaccharides in this entry.

5.6 Ligand geometry [i](#)

Of 6 ligands modelled in this entry, 4 are monoatomic - leaving 2 for Mogul analysis.

In the following table, the Counts columns list the number of bonds (or angles) for which Mogul statistics could be retrieved, the number of bonds (or angles) that are observed in the model and the number of bonds (or angles) that are defined in the Chemical Component Dictionary. The Link column lists molecule types, if any, to which the group is linked. The Z score for a bond length (or angle) is the number of standard deviations the observed value is removed from the expected value. A bond length (or angle) with $|Z| > 2$ is considered an outlier worth inspection. RMSZ is the root-mean-square of all Z scores of the bond lengths (or angles).

Mol	Type	Chain	Res	Link	Bond lengths			Bond angles		
					Counts	RMSZ	$\# Z > 2$	Counts	RMSZ	$\# Z > 2$
4	SAH	B	1701	-	21,28,28	1.19	2 (9%)	20,40,40	1.71	3 (15%)
4	SAH	A	1701	-	21,28,28	1.19	2 (9%)	20,40,40	1.66	3 (15%)

In the following table, the Chirals column lists the number of chiral outliers, the number of chiral centers analysed, the number of these observed in the model and the number defined in the

Chemical Component Dictionary. Similar counts are reported in the Torsion and Rings columns. '-' means no outliers of that kind were identified.

Mol	Type	Chain	Res	Link	Chirals	Torsions	Rings
4	SAH	B	1701	-	-	3/7/31/31	0/3/3/3
4	SAH	A	1701	-	-	3/7/31/31	0/3/3/3

All (4) bond length outliers are listed below:

Mol	Chain	Res	Type	Atoms	Z	Observed(Å)	Ideal(Å)
4	A	1701	SAH	C2-N3	4.06	1.38	1.32
4	B	1701	SAH	C2-N3	3.98	1.38	1.32
4	B	1701	SAH	C2-N1	2.48	1.38	1.33
4	A	1701	SAH	C2-N1	2.41	1.38	1.33

All (6) bond angle outliers are listed below:

Mol	Chain	Res	Type	Atoms	Z	Observed(°)	Ideal(°)
4	B	1701	SAH	N3-C2-N1	-5.49	120.10	128.68
4	A	1701	SAH	N3-C2-N1	-5.39	120.25	128.68
4	B	1701	SAH	C5'-SD-CG	-3.29	92.40	102.27
4	A	1701	SAH	C5'-SD-CG	-3.13	92.88	102.27
4	A	1701	SAH	C3'-C2'-C1'	2.42	104.62	100.98
4	B	1701	SAH	C3'-C2'-C1'	2.41	104.61	100.98

There are no chirality outliers.

All (6) torsion outliers are listed below:

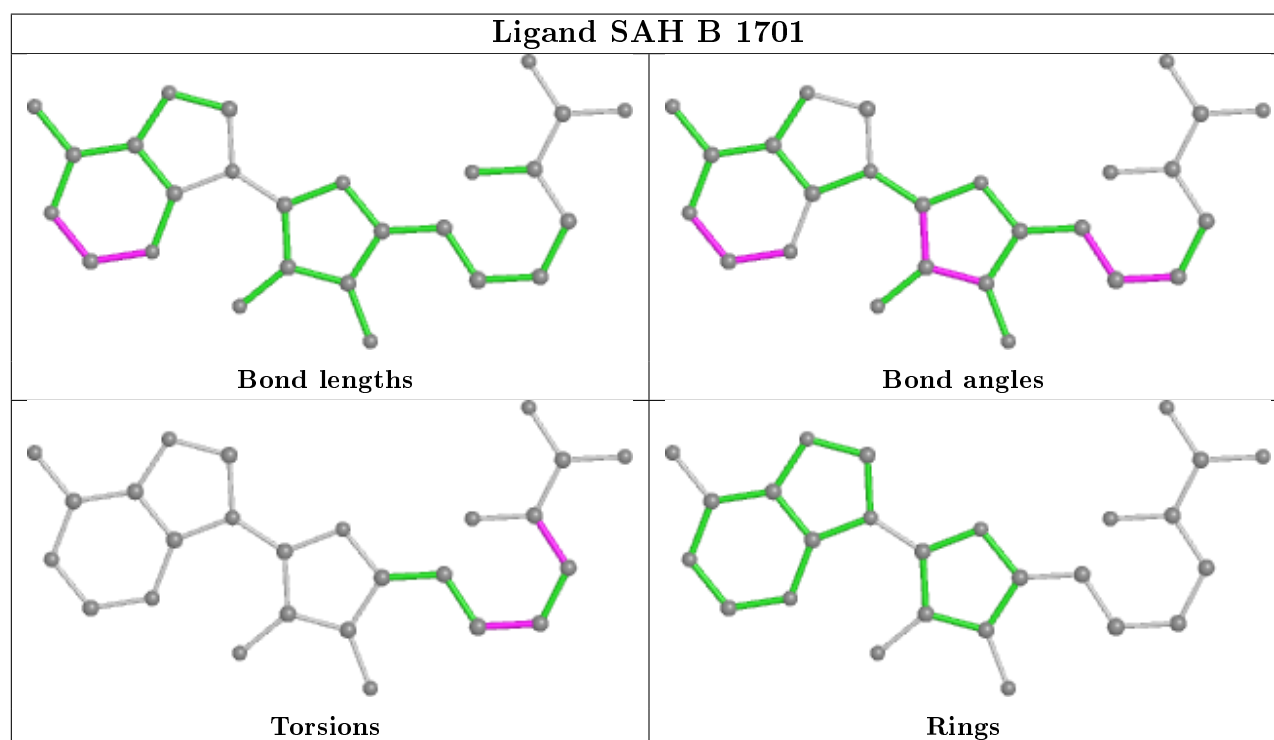
Mol	Chain	Res	Type	Atoms
4	A	1701	SAH	N-CA-CB-CG
4	A	1701	SAH	C-CA-CB-CG
4	B	1701	SAH	N-CA-CB-CG
4	B	1701	SAH	C-CA-CB-CG
4	A	1701	SAH	CB-CG-SD-C5'
4	B	1701	SAH	CB-CG-SD-C5'

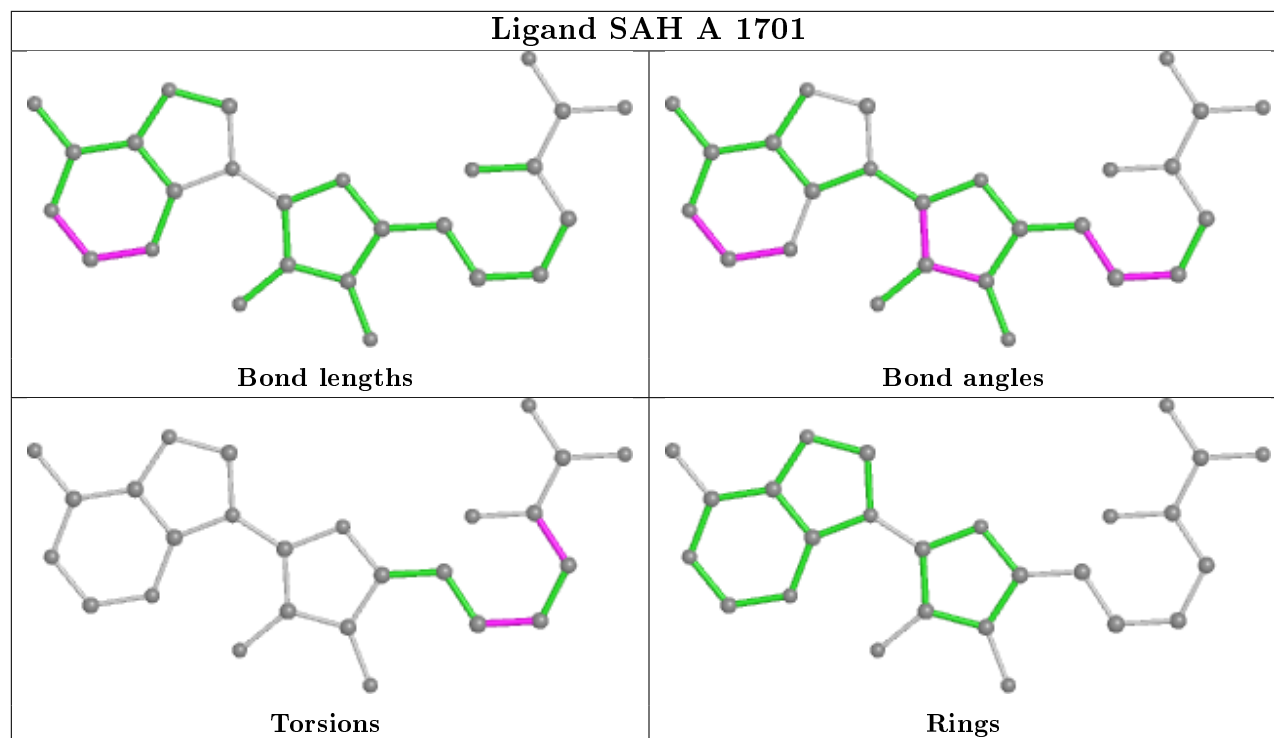
There are no ring outliers.

2 monomers are involved in 2 short contacts:

Mol	Chain	Res	Type	Clashes	Symm-Clashes
4	B	1701	SAH	1	0
4	A	1701	SAH	1	0

The following is a two-dimensional graphical depiction of Mogul quality analysis of bond lengths, bond angles, torsion angles, and ring geometry for all instances of the Ligand of Interest. In addition, ligands with molecular weight > 250 and outliers as shown on the validation Tables will also be included. For torsion angles, if less than 5% of the Mogul distribution of torsion angles is within 10 degrees of the torsion angle in question, then that torsion angle is considered an outlier. Any bond that is central to one or more torsion angles identified as an outlier by Mogul will be highlighted in the graph. For rings, the root-mean-square deviation (RMSD) between the ring in question and similar rings identified by Mogul is calculated over all ring torsion angles. If the average RMSD is greater than 60 degrees and the minimal RMSD between the ring in question and any Mogul-identified rings is also greater than 60 degrees, then that ring is considered an outlier. The outliers are highlighted in purple. The color gray indicates Mogul did not find sufficient equivalents in the CSD to analyse the geometry.





5.7 Other polymers [i](#)

There are no such residues in this entry.

5.8 Polymer linkage issues [i](#)

There are no chain breaks in this entry.

6 Fit of model and data

6.1 Protein, DNA and RNA chains

In the following table, the column labelled ‘#RSRZ> 2’ contains the number (and percentage) of RSRZ outliers, followed by percent RSRZ outliers for the chain as percentile scores relative to all X-ray entries and entries of similar resolution. The OWAB column contains the minimum, median, 95th percentile and maximum values of the occupancy-weighted average B-factor per residue. The column labelled ‘Q< 0.9’ lists the number of (and percentage) of residues with an average occupancy less than 0.9.

Mol	Chain	Analysed	<RSRZ>	#RSRZ>2	OWAB(Å ²)	Q<0.9
1	A	831/873 (95%)	-0.30	10 (1%) 79 63	37, 74, 133, 185	0
1	B	825/873 (94%)	-0.27	13 (1%) 72 52	34, 70, 146, 217	0
2	C	11/12 (91%)	-0.44	0 100 100	81, 132, 161, 177	0
2	E	11/12 (91%)	-0.58	0 100 100	67, 118, 157, 168	0
3	D	11/12 (91%)	-0.30	0 100 100	90, 107, 150, 156	0
3	F	11/12 (91%)	-0.48	0 100 100	75, 104, 139, 147	0
All	All	1700/1794 (94%)	-0.29	23 (1%) 75 58	34, 73, 142, 217	0

All (23) RSRZ outliers are listed below:

Mol	Chain	Res	Type	RSRZ
1	B	963	PRO	9.1
1	B	960	VAL	6.0
1	B	959	PRO	4.3
1	B	760	LEU	4.2
1	B	958	SER	4.1
1	B	1238	PHE	3.1
1	A	732	ASP	3.1
1	A	959	PRO	3.1
1	A	1010	GLY	3.0
1	A	923	GLY	3.0
1	A	1009	LYS	2.9
1	B	962	ARG	2.8
1	B	961	LYS	2.7
1	B	734	ILE	2.6
1	B	1600	SER	2.5
1	B	732	ASP	2.4
1	A	1007	LYS	2.4
1	A	961	LYS	2.4
1	A	1239	ASN	2.4

Continued on next page...

Continued from previous page...

Mol	Chain	Res	Type	RSRZ
1	A	918	ILE	2.2
1	B	759	MET	2.2
1	A	772	ASP	2.1
1	B	753	VAL	2.0

6.2 Non-standard residues in protein, DNA, RNA chains [i](#)

In the following table, the Atoms column lists the number of modelled atoms in the group and the number defined in the chemical component dictionary. The B-factors column lists the minimum, median, 95th percentile and maximum values of B factors of atoms in the group. The column labelled 'Q< 0.9' lists the number of atoms with occupancy less than 0.9.

Mol	Type	Chain	Res	Atoms	RSCC	RSR	B-factors(\AA^2)	Q<0.9
3	C49	D	18	21/23	0.92	0.18	81,85,90,114	0
3	C49	F	18	21/23	0.92	0.18	66,85,110,124	0
2	5CM	C	6	20/21	0.96	0.19	72,82,89,90	0
2	5CM	E	6	20/21	0.97	0.18	64,69,80,116	0

6.3 Carbohydrates [i](#)

There are no monosaccharides in this entry.

6.4 Ligands [i](#)

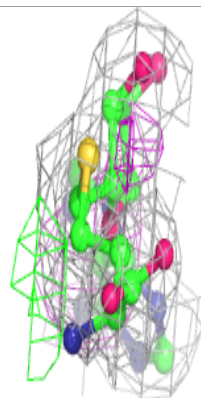
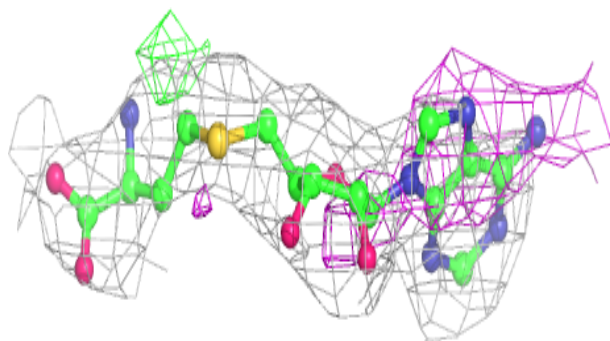
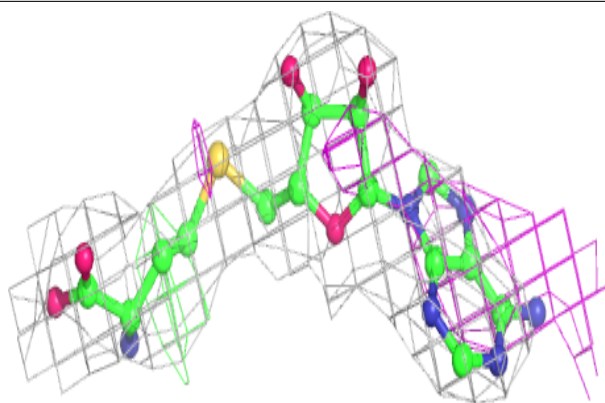
In the following table, the Atoms column lists the number of modelled atoms in the group and the number defined in the chemical component dictionary. The B-factors column lists the minimum, median, 95th percentile and maximum values of B factors of atoms in the group. The column labelled 'Q< 0.9' lists the number of atoms with occupancy less than 0.9.

Mol	Type	Chain	Res	Atoms	RSCC	RSR	B-factors(\AA^2)	Q<0.9
4	SAH	B	1701	26/26	0.85	0.33	58,82,93,108	0
4	SAH	A	1701	26/26	0.87	0.26	68,78,96,110	0
5	ZN	B	1703	1/1	0.98	0.15	95,95,95,95	0
5	ZN	A	1703	1/1	0.98	0.17	72,72,72,72	0
5	ZN	A	1702	1/1	0.99	0.20	55,55,55,55	0
5	ZN	B	1702	1/1	1.00	0.20	59,59,59,59	0

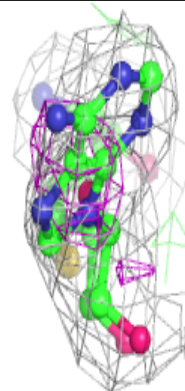
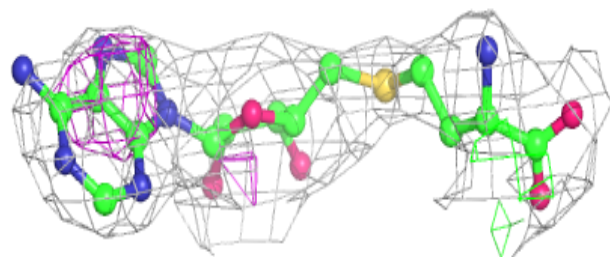
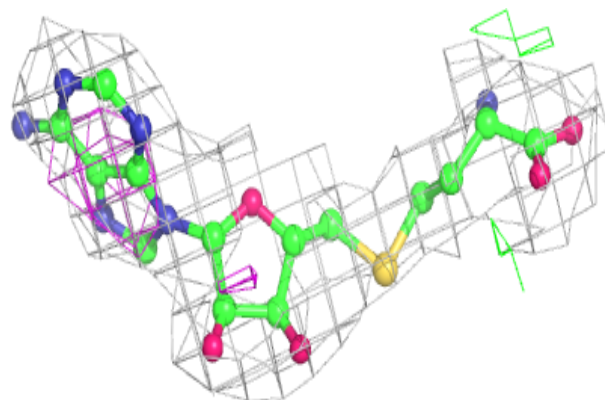
The following is a graphical depiction of the model fit to experimental electron density of all instances of the Ligand of Interest. In addition, ligands with molecular weight > 250 and outliers as shown on the geometry validation Tables will also be included. Each fit is shown from different orientation to approximate a three-dimensional view.

Electron density around SAH B 1701:

$2mF_o-DF_c$ (at 0.7 rmsd) in gray
 mF_o-DF_c (at 3 rmsd) in purple (negative)
and green (positive)

**Electron density around SAH A 1701:**

$2mF_o-DF_c$ (at 0.7 rmsd) in gray
 mF_o-DF_c (at 3 rmsd) in purple (negative)
and green (positive)



6.5 Other polymers [i](#)

There are no such residues in this entry.