



# Full wwPDB X-ray Structure Validation Report ⓘ

Jul 26, 2021 – 08:04 PM EDT

PDB ID : 6WAO  
Title : Crystal structure of Arabidopsis thaliana isochorismoyl-glutamate A pyruvoyl-glutamate lyase in complex with (2-(3-carboxyphenoxy)acetyl)-L-glutamic acid  
Authors : Torrens-Spence, M.P.; Weng, J.K.  
Deposited on : 2020-03-25  
Resolution : 1.76 Å(reported)

This is a Full wwPDB X-ray Structure Validation Report for a publicly released PDB entry.

We welcome your comments at [validation@mail.wwpdb.org](mailto:validation@mail.wwpdb.org)

A user guide is available at

<https://www.wwpdb.org/validation/2017/XrayValidationReportHelp>

with specific help available everywhere you see the ⓘ symbol.

---

The following versions of software and data (see [references ⓘ](#)) were used in the production of this report:

MolProbity : 4.02b-467  
Mogul : 1.8.5 (274361), CSD as541be (2020)  
Xtriage (Phenix) : 1.13  
EDS : 2.22  
buster-report : 1.1.7 (2018)  
Percentile statistics : 20191225.v01 (using entries in the PDB archive December 25th 2019)  
Refmac : 5.8.0158  
CCP4 : 7.0.044 (Gargrove)  
Ideal geometry (proteins) : Engh & Huber (2001)  
Ideal geometry (DNA, RNA) : Parkinson et al. (1996)  
Validation Pipeline (wwPDB-VP) : 2.22

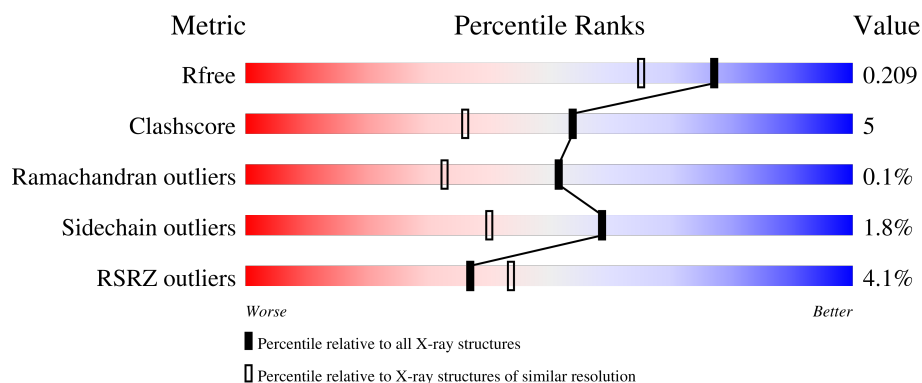
# 1 Overall quality at a glance

The following experimental techniques were used to determine the structure:

*X-RAY DIFFRACTION*

The reported resolution of this entry is 1.76 Å.

Percentile scores (ranging between 0-100) for global validation metrics of the entry are shown in the following graphic. The table shows the number of entries on which the scores are based.



Metric	Whole archive (#Entries)	Similar resolution (#Entries, resolution range(Å))
$R_{free}$	130704	2340 (1.76-1.76)
Clashscore	141614	2466 (1.76-1.76)
Ramachandran outliers	138981	2437 (1.76-1.76)
Sidechain outliers	138945	2437 (1.76-1.76)
RSRZ outliers	127900	2298 (1.76-1.76)

The table below summarises the geometric issues observed across the polymeric chains and their fit to the electron density. The red, orange, yellow and green segments of the lower bar indicate the fraction of residues that contain outliers for  $\geq 3$ , 2, 1 and 0 types of geometric quality criteria respectively. A grey segment represents the fraction of residues that are not modelled. The numeric value for each fraction is indicated below the corresponding segment, with a dot representing fractions  $\leq 5\%$ . The upper red bar (where present) indicates the fraction of residues that have poor fit to the electron density. The numeric value is given above the bar.

Mol	Chain	Length	Quality of chain
1	A	434	<div> <div>5%</div> <div>88%</div> <div>11%</div> </div>
1	B	434	<div> <div>3%</div> <div>87%</div> <div>6%</div> <div>6%</div> </div>

## 2 Entry composition [i](#)

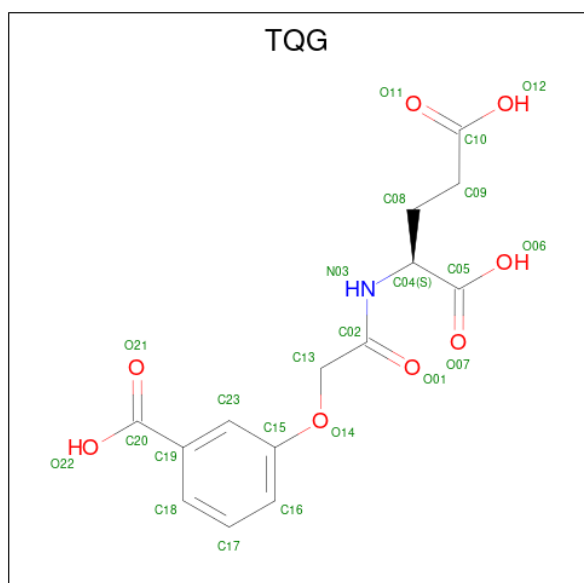
There are 3 unique types of molecules in this entry. The entry contains 7450 atoms, of which 24 are hydrogens and 0 are deuteriums.

In the tables below, the ZeroOcc column contains the number of atoms modelled with zero occupancy, the AltConf column contains the number of residues with at least one atom in alternate conformation and the Trace column contains the number of residues modelled with at most 2 atoms.

- Molecule 1 is a protein called Protein ENHANCED PSEUDOMONAS SUSCEPTIBILITY 1.

Mol	Chain	Residues	Atoms					ZeroOcc	AltConf	Trace
1	A	431	Total	C	N	O	S	0	0	0
			3401	2179	577	631	14			
1	B	406	Total	C	N	O	S	0	0	0
			3223	2070	548	591	14			

- Molecule 2 is N-[(3-carboxyphenoxy)acetyl]-L-glutamic acid (three-letter code: TQG) (formula: C<sub>14</sub>H<sub>15</sub>NO<sub>8</sub>) (labeled as "Ligand of Interest" by depositor).



Mol	Chain	Residues	Atoms					ZeroOcc	AltConf
2	A	1	Total	C	H	N	O	0	0
			35	14	12	1	8		
2	B	1	Total	C	H	N	O	0	0
			35	14	12	1	8		

- Molecule 3 is water.

Mol	Chain	Residues	Atoms		ZeroOcc	AltConf
3	A	390	Total 390	O 390	0	0
3	B	366	Total 366	O 366	0	0



## 4 Data and refinement statistics

Property	Value	Source
Space group	P 21 21 21	Depositor
Cell constants a, b, c, $\alpha$ , $\beta$ , $\gamma$	55.14Å 75.35Å 193.51Å 90.00° 90.00° 90.00°	Depositor
Resolution (Å)	59.45 – 1.76 96.76 – 1.76	Depositor EDS
% Data completeness (in resolution range)	99.8 (59.45-1.76) 99.8 (96.76-1.76)	Depositor EDS
$R_{merge}$	0.06	Depositor
$R_{sym}$	(Not available)	Depositor
$\langle I/\sigma(I) \rangle$ <sup>1</sup>	2.61 (at 1.76Å)	Xtriage
Refinement program	PHENIX 1.17.1_3660	Depositor
R, $R_{free}$	0.172 , 0.212 0.175 , 0.209	Depositor DCC
$R_{free}$ test set	4099 reflections (5.05%)	wwPDB-VP
Wilson B-factor (Å <sup>2</sup> )	25.9	Xtriage
Anisotropy	0.346	Xtriage
Bulk solvent $k_{sol}$ (e/Å <sup>3</sup> ), $B_{sol}$ (Å <sup>2</sup> )	0.34 , 40.8	EDS
L-test for twinning <sup>2</sup>	$\langle  L  \rangle = 0.49$ , $\langle L^2 \rangle = 0.33$	Xtriage
Estimated twinning fraction	No twinning to report.	Xtriage
$F_o, F_c$ correlation	0.96	EDS
Total number of atoms	7450	wwPDB-VP
Average B, all atoms (Å <sup>2</sup> )	31.0	wwPDB-VP

Xtriage's analysis on translational NCS is as follows: *The largest off-origin peak in the Patterson function is 4.98% of the height of the origin peak. No significant pseudotranslation is detected.*

<sup>1</sup>Intensities estimated from amplitudes.

<sup>2</sup>Theoretical values of  $\langle |L| \rangle$ ,  $\langle L^2 \rangle$  for acentric reflections are 0.5, 0.333 respectively for untwinned datasets, and 0.375, 0.2 for perfectly twinned datasets.

## 5 Model quality [i](#)

### 5.1 Standard geometry [i](#)

Bond lengths and bond angles in the following residue types are not validated in this section: TQG

The Z score for a bond length (or angle) is the number of standard deviations the observed value is removed from the expected value. A bond length (or angle) with  $|Z| > 5$  is considered an outlier worth inspection. RMSZ is the root-mean-square of all Z scores of the bond lengths (or angles).

Mol	Chain	Bond lengths		Bond angles	
		RMSZ	$\# Z  > 5$	RMSZ	$\# Z  > 5$
1	A	0.82	0/3479	0.78	0/4713
1	B	0.70	0/3293	0.77	0/4451
All	All	0.77	0/6772	0.78	0/9164

There are no bond length outliers.

There are no bond angle outliers.

There are no chirality outliers.

There are no planarity outliers.

### 5.2 Too-close contacts [i](#)

In the following table, the Non-H and H(model) columns list the number of non-hydrogen atoms and hydrogen atoms in the chain respectively. The H(added) column lists the number of hydrogen atoms added and optimized by MolProbity. The Clashes column lists the number of clashes within the asymmetric unit, whereas Symm-Clashes lists symmetry-related clashes.

Mol	Chain	Non-H	H(model)	H(added)	Clashes	Symm-Clashes
1	A	3401	0	3401	47	0
1	B	3223	0	3216	24	0
2	A	23	12	0	0	0
2	B	23	12	0	0	0
3	A	390	0	0	4	0
3	B	366	0	0	3	0
All	All	7426	24	6617	70	0

The all-atom clashscore is defined as the number of clashes found per 1000 atoms (including hydrogen atoms). The all-atom clashscore for this structure is 5.

All (70) close contacts within the same asymmetric unit are listed below, sorted by their clash

magnitude.

Atom-1	Atom-2	Interatomic distance (Å)	Clash overlap (Å)
1:A:267:MET:HE1	1:A:413:LEU:HD22	1.18	1.16
1:A:38:ARG:HD2	1:A:215:LYS:HD3	1.31	1.12
1:A:133:TYR:CE1	1:A:213:GLU:HG3	1.87	1.07
1:A:267:MET:HE1	1:A:413:LEU:CD2	1.89	1.02
1:A:267:MET:CE	1:A:413:LEU:HD22	1.89	1.02
1:A:211:ASP:HB3	1:A:214:THR:HG22	1.45	0.94
1:A:267:MET:CE	1:A:413:LEU:CD2	2.46	0.93
1:A:211:ASP:HB3	1:A:214:THR:CG2	2.01	0.90
1:A:38:ARG:CD	1:A:215:LYS:HD3	2.06	0.84
1:B:192:ARG:NH1	1:B:192:ARG:HB3	2.00	0.76
1:A:349:LYS:HE3	1:A:349:LYS:HA	1.67	0.75
1:A:335:GLN:HA	1:A:339:LYS:HE2	1.71	0.71
1:A:38:ARG:HD2	1:A:215:LYS:CD	2.15	0.70
1:A:38:ARG:NH2	1:A:216:PRO:HD2	2.07	0.69
1:B:347:TRP:CH2	1:B:351:ILE:HG23	2.28	0.69
1:A:267:MET:CE	1:A:413:LEU:HD21	2.24	0.67
1:A:200:PHE:HB3	1:A:203:ILE:HD12	1.76	0.66
1:A:38:ARG:HH22	1:A:216:PRO:HD2	1.61	0.65
1:A:211:ASP:O	1:A:214:THR:HG23	1.96	0.65
1:B:192:ARG:HH11	1:B:192:ARG:HG3	1.64	0.63
1:B:373:TYR:CZ	1:B:402:ILE:HG12	2.33	0.63
1:A:267:MET:HE2	1:A:413:LEU:CD2	2.29	0.63
1:B:192:ARG:HH11	1:B:192:ARG:CG	2.11	0.63
1:A:416:GLN:HG3	3:A:900:HOH:O	1.99	0.62
1:B:347:TRP:CZ2	1:B:351:ILE:HG23	2.36	0.60
1:B:170:LYS:NZ	3:B:605:HOH:O	2.34	0.60
1:A:334:SER:O	1:A:339:LYS:HD3	2.03	0.59
1:A:263:ILE:O	1:A:267:MET:HG2	2.04	0.57
1:A:38:ARG:HD3	1:A:353:ILE:O	2.05	0.57
1:A:269:LYS:HE3	1:A:270:HIS:CE1	2.41	0.56
1:A:305:GLN:HG3	3:A:615:HOH:O	2.07	0.54
1:A:217:THR:HG22	1:A:217:THR:O	2.08	0.54
1:B:224:THR:O	1:B:224:THR:OG1	2.26	0.53
1:A:133:TYR:CE1	1:A:213:GLU:CG	2.78	0.52
1:B:38:ARG:NH2	1:B:212:PRO:O	2.42	0.52
1:B:109:ASP:O	1:B:113:LEU:HG	2.08	0.52
1:A:341:LYS:O	1:A:345:GLU:HG3	2.09	0.52
1:A:133:TYR:HE1	1:A:213:GLU:HG3	1.63	0.51
1:A:205:TYR:HA	1:A:206:PRO:C	2.30	0.51
1:A:212:PRO:HA	1:A:215:LYS:HD2	1.93	0.50
1:B:192:ARG:NH1	1:B:192:ARG:CB	2.72	0.50

*Continued on next page...*

*Continued from previous page...*

Atom-1	Atom-2	Interatomic distance (Å)	Clash overlap (Å)
1:B:192:ARG:NH1	1:B:192:ARG:CG	2.73	0.50
1:B:315:GLU:HG2	3:B:612:HOH:O	2.13	0.48
1:B:418:VAL:O	1:B:422:VAL:HG13	2.13	0.48
1:A:38:ARG:NH2	1:A:215:LYS:HB3	2.29	0.48
1:A:349:LYS:HE3	1:A:349:LYS:CA	2.39	0.48
1:A:38:ARG:CZ	1:A:215:LYS:HB3	2.44	0.48
1:B:16:ARG:HD2	1:B:62:VAL:HG22	1.98	0.46
1:A:66:ARG:CZ	1:A:190:GLN:HG2	2.45	0.46
1:B:290:ARG:NH1	3:B:610:HOH:O	2.45	0.45
1:A:104:ASN:HB2	3:A:761:HOH:O	2.15	0.45
1:B:192:ARG:HB3	1:B:192:ARG:CZ	2.46	0.45
1:B:38:ARG:HG2	1:B:38:ARG:HH21	1.81	0.44
1:B:112:GLU:O	1:B:113:LEU:C	2.56	0.44
1:A:18:LEU:CD2	1:A:19:LYS:HG2	2.48	0.44
1:A:211:ASP:O	1:A:214:THR:CG2	2.64	0.43
1:A:348:VAL:HG12	1:A:349:LYS:HD2	2.01	0.42
1:A:381:LYS:HD2	1:B:49:HIS:CG	2.55	0.42
1:A:192:ARG:HH21	1:A:192:ARG:CG	2.32	0.42
1:B:323:TRP:O	1:B:327:GLN:HG2	2.19	0.42
1:A:240:LYS:HD3	1:A:430:TYR:CE1	2.54	0.42
1:A:221:THR:O	1:A:221:THR:OG1	2.36	0.42
1:B:120:PHE:CD1	1:B:120:PHE:C	2.93	0.42
1:B:263:ILE:O	1:B:267:MET:HG2	2.20	0.41
1:A:217:THR:O	1:A:217:THR:CG2	2.69	0.41
1:A:305:GLN:NE2	3:A:615:HOH:O	2.51	0.41
1:B:192:ARG:HB3	1:B:192:ARG:HH11	1.81	0.41
1:A:62:VAL:HG11	1:A:185:GLY:HA3	2.03	0.40
1:A:312:THR:OG1	1:A:315:GLU:HG3	2.22	0.40
1:A:31:PRO:HG2	1:A:344:ALA:HB1	2.02	0.40

There are no symmetry-related clashes.

## 5.3 Torsion angles ⓘ

### 5.3.1 Protein backbone ⓘ

In the following table, the Percentiles column shows the percent Ramachandran outliers of the chain as a percentile score with respect to all X-ray entries followed by that with respect to entries of similar resolution.

The Analysed column shows the number of residues for which the backbone conformation was analysed, and the total number of residues.

Mol	Chain	Analysed	Favoured	Allowed	Outliers	Percentiles	
1	A	429/434 (99%)	416 (97%)	12 (3%)	1 (0%)	47	29
1	B	396/434 (91%)	388 (98%)	8 (2%)	0	100	100
All	All	825/868 (95%)	804 (98%)	20 (2%)	1 (0%)	51	33

All (1) Ramachandran outliers are listed below:

Mol	Chain	Res	Type
1	A	182	ASP

### 5.3.2 Protein sidechains ⓘ

In the following table, the Percentiles column shows the percent sidechain outliers of the chain as a percentile score with respect to all X-ray entries followed by that with respect to entries of similar resolution.

The Analysed column shows the number of residues for which the sidechain conformation was analysed, and the total number of residues.

Mol	Chain	Analysed	Rotameric	Outliers	Percentiles	
1	A	377/380 (99%)	371 (98%)	6 (2%)	62	45
1	B	354/380 (93%)	347 (98%)	7 (2%)	55	34
All	All	731/760 (96%)	718 (98%)	13 (2%)	59	40

All (13) residues with a non-rotameric sidechain are listed below:

Mol	Chain	Res	Type
1	A	192	ARG
1	A	214	THR
1	A	222	THR
1	A	225	ASN
1	A	297	GLU
1	A	356	SER
1	B	4	GLU
1	B	18	LEU
1	B	191	ARG
1	B	192	ARG
1	B	213	GLU
1	B	224	THR
1	B	392	LEU

Sometimes sidechains can be flipped to improve hydrogen bonding and reduce clashes. All (2) such

sidechains are listed below:

Mol	Chain	Res	Type
1	A	187	GLN
1	B	225	ASN

### 5.3.3 RNA [i](#)

There are no RNA molecules in this entry.

## 5.4 Non-standard residues in protein, DNA, RNA chains [i](#)

There are no non-standard protein/DNA/RNA residues in this entry.

## 5.5 Carbohydrates [i](#)

There are no monosaccharides in this entry.

## 5.6 Ligand geometry [i](#)

2 ligands are modelled in this entry.

In the following table, the Counts columns list the number of bonds (or angles) for which Mogul statistics could be retrieved, the number of bonds (or angles) that are observed in the model and the number of bonds (or angles) that are defined in the Chemical Component Dictionary. The Link column lists molecule types, if any, to which the group is linked. The Z score for a bond length (or angle) is the number of standard deviations the observed value is removed from the expected value. A bond length (or angle) with  $|Z| > 2$  is considered an outlier worth inspection. RMSZ is the root-mean-square of all Z scores of the bond lengths (or angles).

Mol	Type	Chain	Res	Link	Bond lengths			Bond angles		
					Counts	RMSZ	$\# Z  > 2$	Counts	RMSZ	$\# Z  > 2$
2	TQG	A	501	-	15,23,23	1.86	2 (13%)	19,30,30	1.70	4 (21%)
2	TQG	B	501	-	15,23,23	2.23	3 (20%)	19,30,30	1.28	3 (15%)

In the following table, the Chirals column lists the number of chiral outliers, the number of chiral centers analysed, the number of these observed in the model and the number defined in the Chemical Component Dictionary. Similar counts are reported in the Torsion and Rings columns. '-' means no outliers of that kind were identified.

Mol	Type	Chain	Res	Link	Chirals	Torsions	Rings
2	TQG	A	501	-	-	3/12/22/22	0/1/1/1

*Continued on next page...*

*Continued from previous page...*

Mol	Type	Chain	Res	Link	Chirals	Torsions	Rings
2	TQG	B	501	-	-	2/12/22/22	0/1/1/1

All (5) bond length outliers are listed below:

Mol	Chain	Res	Type	Atoms	Z	Observed(Å)	Ideal(Å)
2	B	501	TQG	C02-N03	5.85	1.46	1.34
2	B	501	TQG	C19-C20	5.44	1.52	1.47
2	A	501	TQG	C02-N03	4.90	1.44	1.34
2	A	501	TQG	C19-C20	3.89	1.51	1.47
2	B	501	TQG	C13-C02	2.14	1.55	1.51

All (7) bond angle outliers are listed below:

Mol	Chain	Res	Type	Atoms	Z	Observed(°)	Ideal(°)
2	A	501	TQG	C13-O14-C15	-4.23	110.23	117.67
2	A	501	TQG	C08-C09-C10	-3.46	106.15	113.59
2	A	501	TQG	O01-C02-N03	-2.85	118.14	122.95
2	B	501	TQG	C13-O14-C15	-2.76	112.81	117.67
2	B	501	TQG	C13-C02-N03	2.46	120.65	116.37
2	A	501	TQG	C08-C04-N03	2.35	113.61	110.19
2	B	501	TQG	O01-C02-N03	-2.35	118.99	122.95

There are no chirality outliers.

All (5) torsion outliers are listed below:

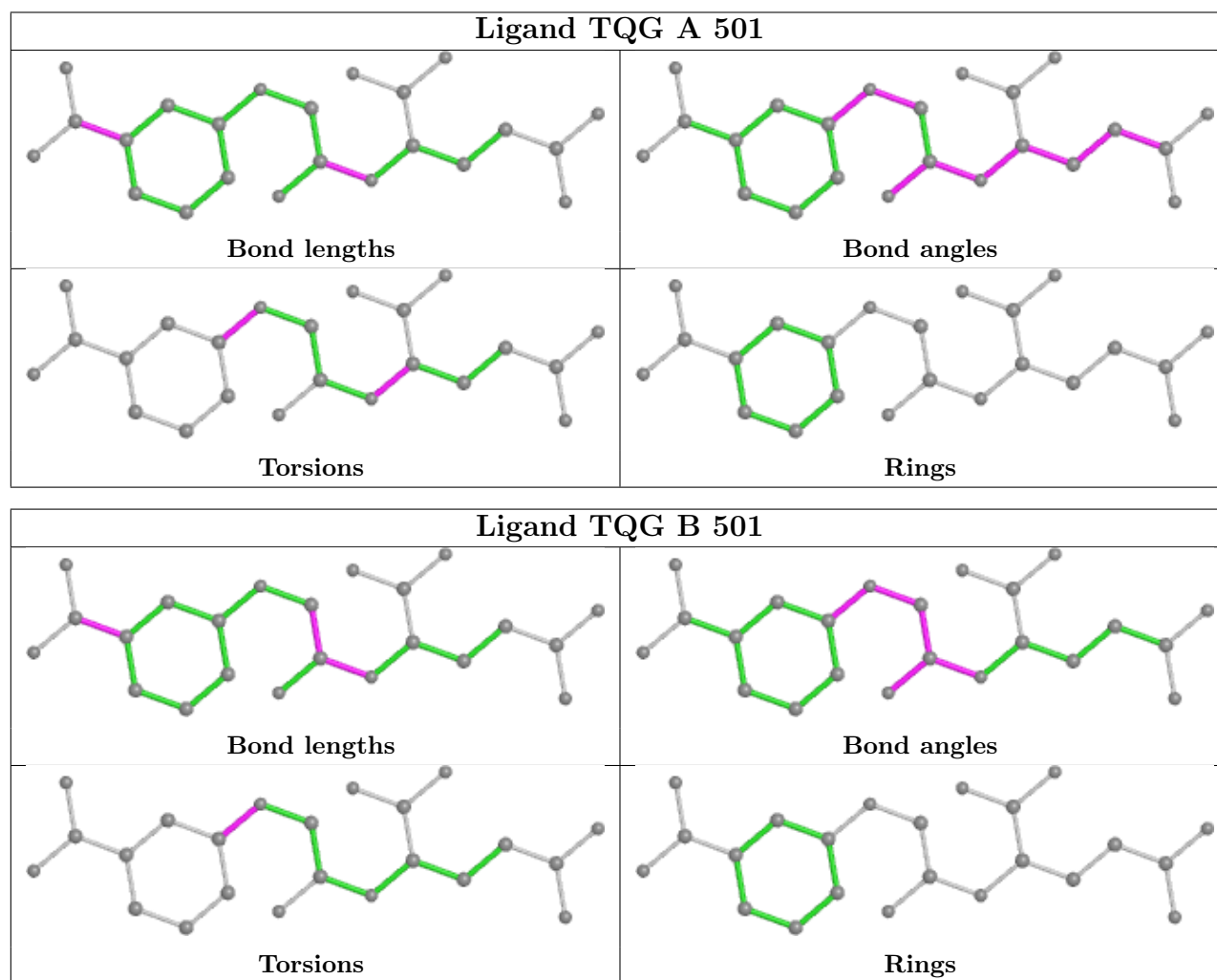
Mol	Chain	Res	Type	Atoms
2	B	501	TQG	C16-C15-O14-C13
2	A	501	TQG	C16-C15-O14-C13
2	B	501	TQG	C23-C15-O14-C13
2	A	501	TQG	C23-C15-O14-C13
2	A	501	TQG	C05-C04-N03-C02

There are no ring outliers.

No monomer is involved in short contacts.

The following is a two-dimensional graphical depiction of Mogul quality analysis of bond lengths, bond angles, torsion angles, and ring geometry for all instances of the Ligand of Interest. In addition, ligands with molecular weight > 250 and outliers as shown on the validation Tables will also be included. For torsion angles, if less than 5% of the Mogul distribution of torsion angles is within 10 degrees of the torsion angle in question, then that torsion angle is considered an outlier. Any bond that is central to one or more torsion angles identified as an outlier by Mogul will be

highlighted in the graph. For rings, the root-mean-square deviation (RMSD) between the ring in question and similar rings identified by Mogul is calculated over all ring torsion angles. If the average RMSD is greater than 60 degrees and the minimal RMSD between the ring in question and any Mogul-identified rings is also greater than 60 degrees, then that ring is considered an outlier. The outliers are highlighted in purple. The color gray indicates Mogul did not find sufficient equivalents in the CSD to analyse the geometry.



## 5.7 Other polymers ⓘ

There are no such residues in this entry.

## 5.8 Polymer linkage issues ⓘ

There are no chain breaks in this entry.

## 6 Fit of model and data

### 6.1 Protein, DNA and RNA chains

In the following table, the column labelled ‘#RSRZ > 2’ contains the number (and percentage) of RSRZ outliers, followed by percent RSRZ outliers for the chain as percentile scores relative to all X-ray entries and entries of similar resolution. The OWAB column contains the minimum, median, 95<sup>th</sup> percentile and maximum values of the occupancy-weighted average B-factor per residue. The column labelled ‘Q < 0.9’ lists the number of (and percentage) of residues with an average occupancy less than 0.9.

Mol	Chain	Analysed	<RSRZ>	#RSRZ>2	OWAB(Å <sup>2</sup> )	Q<0.9
1	A	431/434 (99%)	0.11	22 (5%) 28 34	14, 25, 60, 124	0
1	B	406/434 (93%)	0.00	12 (2%) 50 56	16, 27, 56, 93	0
All	All	837/868 (96%)	0.06	34 (4%) 37 44	14, 26, 60, 124	0

All (34) RSRZ outliers are listed below:

Mol	Chain	Res	Type	RSRZ
1	A	217	THR	12.4
1	A	221	THR	11.1
1	A	216	PRO	6.5
1	A	214	THR	5.1
1	A	220	VAL	5.1
1	A	343	PHE	4.7
1	B	18	LEU	4.5
1	A	357	VAL	3.9
1	B	224	THR	3.9
1	A	358	GLY	3.6
1	A	215	LYS	3.5
1	A	222	THR	3.3
1	A	223	PRO	3.2
1	B	402	ILE	3.2
1	B	350	ASN	3.2
1	B	353	ILE	3.1
1	B	113	LEU	3.1
1	B	354	PRO	2.7
1	B	359	SER	2.7
1	B	403	GLY	2.7
1	A	356	SER	2.6
1	A	20	LYS	2.5
1	A	218	SER	2.4
1	A	21	PRO	2.4

*Continued on next page...*

*Continued from previous page...*

Mol	Chain	Res	Type	RSRZ
1	A	342	ALA	2.4
1	B	351	ILE	2.3
1	A	22	THR	2.3
1	B	189	PHE	2.3
1	B	181	LYS	2.3
1	A	267	MET	2.2
1	A	346	ASN	2.2
1	A	359	SER	2.1
1	A	18	LEU	2.1
1	A	355	VAL	2.0

## 6.2 Non-standard residues in protein, DNA, RNA chains [i](#)

There are no non-standard protein/DNA/RNA residues in this entry.

## 6.3 Carbohydrates [i](#)

There are no monosaccharides in this entry.

## 6.4 Ligands [i](#)

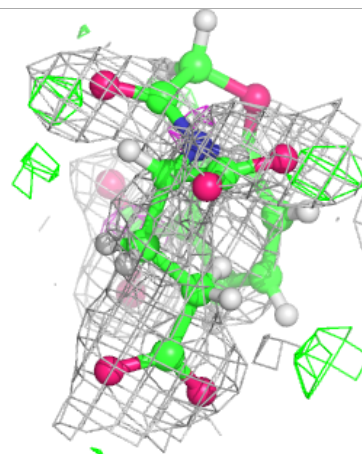
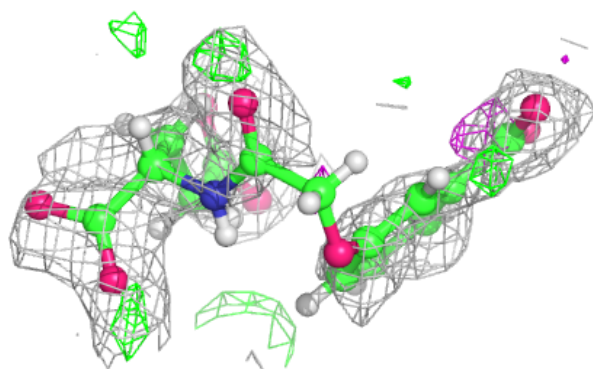
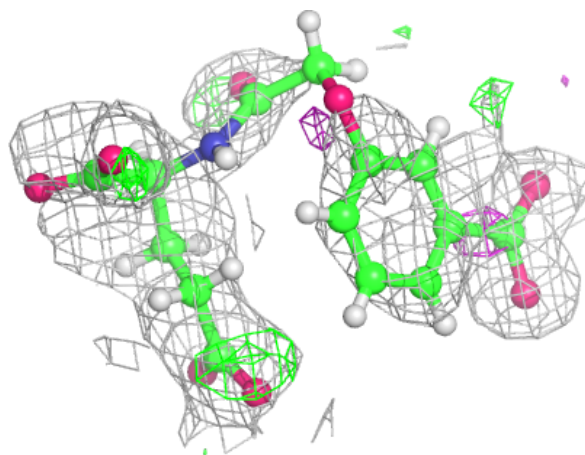
In the following table, the Atoms column lists the number of modelled atoms in the group and the number defined in the chemical component dictionary. The B-factors column lists the minimum, median, 95<sup>th</sup> percentile and maximum values of B factors of atoms in the group. The column labelled 'Q< 0.9' lists the number of atoms with occupancy less than 0.9.

Mol	Type	Chain	Res	Atoms	RSCC	RSR	B-factors( $\text{\AA}^2$ )	Q<0.9
2	TQG	B	501	23/23	0.63	0.25	30,83,105,107	0
2	TQG	A	501	23/23	0.91	0.20	19,33,41,42	0

The following is a graphical depiction of the model fit to experimental electron density of all instances of the Ligand of Interest. In addition, ligands with molecular weight > 250 and outliers as shown on the geometry validation Tables will also be included. Each fit is shown from different orientation to approximate a three-dimensional view.

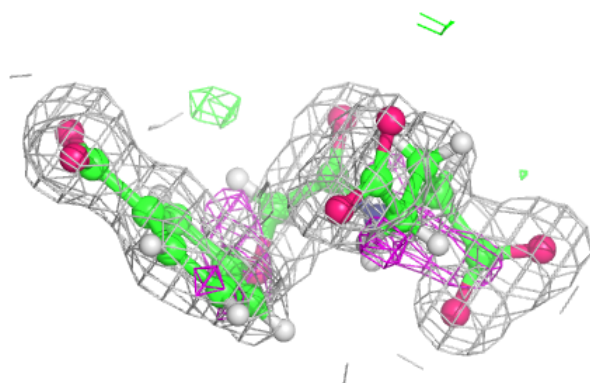
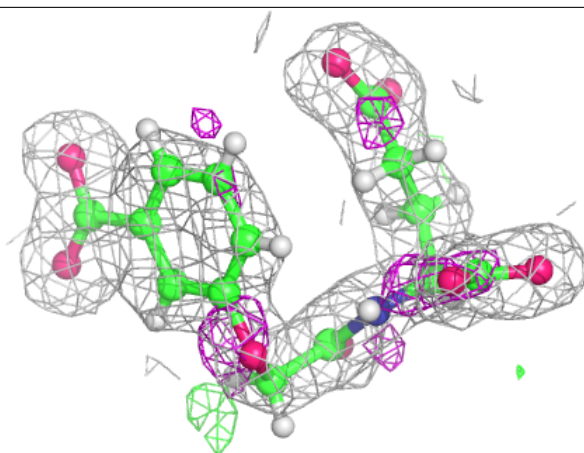
**Electron density around TQG B 501:**

$2mF_o-DF_c$  (at 0.7 rmsd) in gray  
 $mF_o-DF_c$  (at 3 rmsd) in purple (negative)  
and green (positive)



**Electron density around TQG A 501:**

$2mF_o-DF_c$  (at 0.7 rmsd) in gray  
 $mF_o-DF_c$  (at 3 rmsd) in purple (negative)  
and green (positive)



## 6.5 Other polymers [i](#)

There are no such residues in this entry.