



Full wwPDB X-ray Structure Validation Report ⓘ

May 14, 2020 – 05:02 pm BST

PDB ID : 1WB6
Title : S954A mutant of the feruloyl esterase module from *Clostridium thermocellum* complexed with vanillate
Authors : Tarbouriech, N.; Prates, J.A.; Fontes, C.; Davies, G.J.
Deposited on : 2004-10-30
Resolution : 1.40 Å(reported)

This is a Full wwPDB X-ray Structure Validation Report for a publicly released PDB entry.

We welcome your comments at validation@mail.wwpdb.org

A user guide is available at

<https://www.wwpdb.org/validation/2017/XrayValidationReportHelp>

with specific help available everywhere you see the ⓘ symbol.

The following versions of software and data (see [references ⓘ](#)) were used in the production of this report:

MolProbity : 4.02b-467
Mogul : 1.8.5 (274361), CSD as541be (2020)
Xtriage (Phenix) : 1.13
EDS : 2.11
Percentile statistics : 20191225.v01 (using entries in the PDB archive December 25th 2019)
Refmac : 5.8.0158
CCP4 : 7.0.044 (Gargrove)
Ideal geometry (proteins) : Engh & Huber (2001)
Ideal geometry (DNA, RNA) : Parkinson et al. (1996)
Validation Pipeline (wwPDB-VP) : 2.11

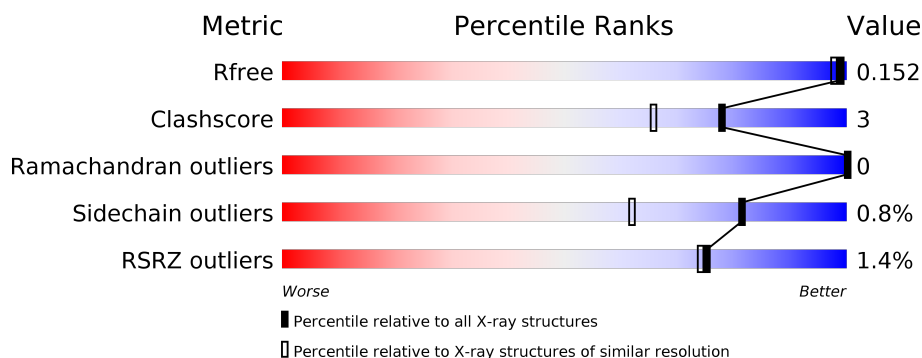
1 Overall quality at a glance

The following experimental techniques were used to determine the structure:

X-RAY DIFFRACTION

The reported resolution of this entry is 1.40 Å.

Percentile scores (ranging between 0-100) for global validation metrics of the entry are shown in the following graphic. The table shows the number of entries on which the scores are based.



Metric	Whole archive (#Entries)	Similar resolution (#Entries, resolution range(Å))
R_{free}	130704	1714 (1.40-1.40)
Clashscore	141614	1812 (1.40-1.40)
Ramachandran outliers	138981	1763 (1.40-1.40)
Sidechain outliers	138945	1762 (1.40-1.40)
RSRZ outliers	127900	1674 (1.40-1.40)

The table below summarises the geometric issues observed across the polymeric chains and their fit to the electron density. The red, orange, yellow and green segments on the lower bar indicate the fraction of residues that contain outliers for ≥ 3 , 2, 1 and 0 types of geometric quality criteria respectively. A grey segment represents the fraction of residues that are not modelled. The numeric value for each fraction is indicated below the corresponding segment, with a dot representing fractions $\leq 5\%$. The upper red bar (where present) indicates the fraction of residues that have poor fit to the electron density. The numeric value is given above the bar.

Mol	Chain	Length	Quality of chain
1	A	297	<div> <div style="width: 100%; height: 10px; background: linear-gradient(to right, red 1%, orange 1%, yellow 1%, green 89%, grey 6%);"></div> <div style="display: flex; justify-content: space-between; font-size: 0.8em;"> % 89% 6% • 5% </div> </div>
1	B	297	<div> <div style="width: 100%; height: 10px; background: linear-gradient(to right, red 2%, orange 2%, yellow 1%, green 90%, grey 5%);"></div> <div style="display: flex; justify-content: space-between; font-size: 0.8em;"> 2% 90% • • 5% </div> </div>

2 Entry composition

There are 6 unique types of molecules in this entry. The entry contains 5508 atoms, of which 0 are hydrogens and 0 are deuteriums.

In the tables below, the ZeroOcc column contains the number of atoms modelled with zero occupancy, the AltConf column contains the number of residues with at least one atom in alternate conformation and the Trace column contains the number of residues modelled with at most 2 atoms.

- Molecule 1 is a protein called ENDO-1,4-BETA-XYLANASE Y.

Mol	Chain	Residues	Atoms					ZeroOcc	AltConf	Trace
1	A	283	Total	C	N	O	S	0	17	0
			2368	1521	392	444	11			
1	B	283	Total	C	N	O	S	0	15	0
			2358	1518	390	439	11			

There are 28 discrepancies between the modelled and reference sequences:

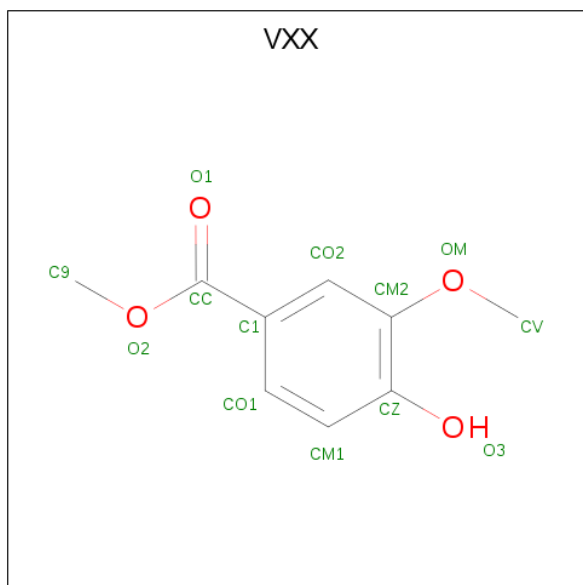
Chain	Residue	Modelled	Actual	Comment	Reference
A	789	MET	-	expression tag	UNP P51584
A	790	ALA	-	expression tag	UNP P51584
A	791	SER	-	expression tag	UNP P51584
A	954	ALA	SER	engineered mutation	UNP P51584
A	1017	GLU	ASP	conflict	UNP P51584
A	1018	ASP	HIS	conflict	UNP P51584
A	1078	LEU	-	expression tag	UNP P51584
A	1079	GLU	-	expression tag	UNP P51584
A	1080	HIS	-	expression tag	UNP P51584
A	1081	HIS	-	expression tag	UNP P51584
A	1082	HIS	-	expression tag	UNP P51584
A	1083	HIS	-	expression tag	UNP P51584
A	1084	HIS	-	expression tag	UNP P51584
A	1085	HIS	-	expression tag	UNP P51584
B	789	MET	-	expression tag	UNP P51584
B	790	ALA	-	expression tag	UNP P51584
B	791	SER	-	expression tag	UNP P51584
B	954	ALA	SER	engineered mutation	UNP P51584
B	1017	GLU	ASP	conflict	UNP P51584
B	1018	ASP	HIS	conflict	UNP P51584
B	1078	LEU	-	expression tag	UNP P51584
B	1079	GLU	-	expression tag	UNP P51584
B	1080	HIS	-	expression tag	UNP P51584
B	1081	HIS	-	expression tag	UNP P51584
B	1082	HIS	-	expression tag	UNP P51584

Continued on next page...

Continued from previous page...

Chain	Residue	Modelled	Actual	Comment	Reference
B	1083	HIS	-	expression tag	UNP P51584
B	1084	HIS	-	expression tag	UNP P51584
B	1085	HIS	-	expression tag	UNP P51584

- Molecule 2 is METHYL VANILLATE (three-letter code: VXX) (formula: $C_9H_{10}O_4$).



Mol	Chain	Residues	Atoms			ZeroOcc	AltConf
2	A	1	Total	C	O	0	0
			13	9	4		
2	B	1	Total	C	O	0	0
			13	9	4		

- Molecule 3 is GLYCEROL (three-letter code: GOL) (formula: $C_3H_8O_3$).



Mol	Chain	Residues	Atoms			ZeroOcc	AltConf
3	A	1	Total	C	O	0	0
			6	3	3		
3	A	1	Total	C	O	0	0
			6	3	3		
3	A	1	Total	C	O	0	0
			6	3	3		
3	B	1	Total	C	O	0	0
			6	3	3		
3	B	1	Total	C	O	0	0
			6	3	3		
3	B	1	Total	C	O	0	0
			6	3	3		

- Molecule 4 is ACETATE ION (three-letter code: ACT) (formula: C₂H₃O₂).



Mol	Chain	Residues	Atoms			ZeroOcc	AltConf
4	A	1	Total	C	O	0	0
			4	2	2		
4	B	1	Total	C	O	0	0
			4	2	2		

- Molecule 5 is CADMIUM ION (three-letter code: CD) (formula: Cd).

Mol	Chain	Residues	Atoms		ZeroOcc	AltConf
5	B	10	Total	Cd	0	0
			10	10		
5	A	10	Total	Cd	0	0
			10	10		

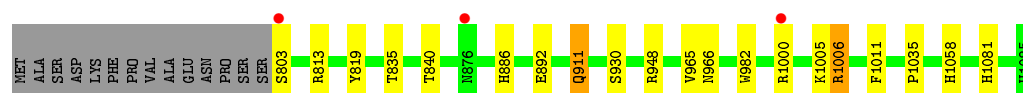
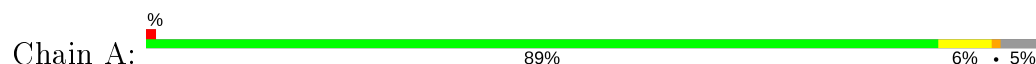
- Molecule 6 is water.

Mol	Chain	Residues	Atoms		ZeroOcc	AltConf
6	A	345	Total	O	0	0
			345	345		
6	B	341	Total	O	0	0
			341	341		

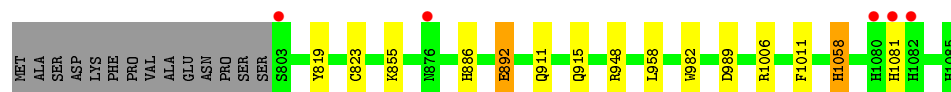
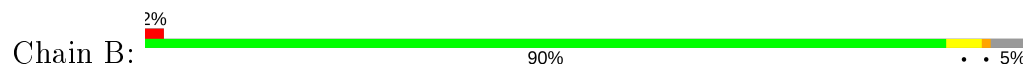
3 Residue-property plots [i](#)

These plots are drawn for all protein, RNA and DNA chains in the entry. The first graphic for a chain summarises the proportions of the various outlier classes displayed in the second graphic. The second graphic shows the sequence view annotated by issues in geometry and electron density. Residues are color-coded according to the number of geometric quality criteria for which they contain at least one outlier: green = 0, yellow = 1, orange = 2 and red = 3 or more. A red dot above a residue indicates a poor fit to the electron density ($\text{RSRZ} > 2$). Stretches of 2 or more consecutive residues without any outlier are shown as a green connector. Residues present in the sample, but not in the model, are shown in grey.

• Molecule 1: ENDO-1,4-BETA-XYLANASE Y



• Molecule 1: ENDO-1,4-BETA-XYLANASE Y



4 Data and refinement statistics

Property	Value	Source
Space group	P 21 21 21	Depositor
Cell constants a, b, c, α , β , γ	64.99 Å 108.46 Å 113.03 Å 90.00° 90.00° 90.00°	Depositor
Resolution (Å)	20.00 – 1.40 19.89 – 1.40	Depositor EDS
% Data completeness (in resolution range)	98.4 (20.00-1.40) 98.4 (19.89-1.40)	Depositor EDS
R_{merge}	0.06	Depositor
R_{sym}	(Not available)	Depositor
$\langle I/\sigma(I) \rangle$ ¹	1.87 (at 1.40 Å)	Xtriage
Refinement program	REFMAC 5.1.24	Depositor
R, R_{free}	0.117 , 0.140 0.132 , 0.152	Depositor DCC
R_{free} test set	7757 reflections (5.00%)	wwPDB-VP
Wilson B-factor (Å ²)	11.9	Xtriage
Anisotropy	0.051	Xtriage
Bulk solvent k_{sol} (e/Å ³), B_{sol} (Å ²)	0.41 , 48.1	EDS
L-test for twinning ²	$\langle L \rangle = 0.50$, $\langle L^2 \rangle = 0.33$	Xtriage
Estimated twinning fraction	0.008 for -h,l,k	Xtriage
F_o, F_c correlation	0.98	EDS
Total number of atoms	5508	wwPDB-VP
Average B, all atoms (Å ²)	15.0	wwPDB-VP

Xtriage's analysis on translational NCS is as follows: *The largest off-origin peak in the Patterson function is 6.27% of the height of the origin peak. No significant pseudotranslation is detected.*

¹Intensities estimated from amplitudes.

²Theoretical values of $\langle |L| \rangle$, $\langle L^2 \rangle$ for acentric reflections are 0.5, 0.333 respectively for untwinned datasets, and 0.375, 0.2 for perfectly twinned datasets.

5 Model quality

5.1 Standard geometry

Bond lengths and bond angles in the following residue types are not validated in this section: GOL, CD, VXX, ACT

The Z score for a bond length (or angle) is the number of standard deviations the observed value is removed from the expected value. A bond length (or angle) with $|Z| > 5$ is considered an outlier worth inspection. RMSZ is the root-mean-square of all Z scores of the bond lengths (or angles).

Mol	Chain	Bond lengths		Bond angles	
		RMSZ	$\# Z > 5$	RMSZ	$\# Z > 5$
1	A	0.84	3/2515 (0.1%)	0.86	5/3421 (0.1%)
1	B	0.85	1/2505 (0.0%)	0.84	6/3406 (0.2%)
All	All	0.85	4/5020 (0.1%)	0.85	11/6827 (0.2%)

Chiral center outliers are detected by calculating the chiral volume of a chiral center and verifying if the center is modelled as a planar moiety or with the opposite hand. A planarity outlier is detected by checking planarity of atoms in a peptide group, atoms in a mainchain group or atoms of a sidechain that are expected to be planar.

Mol	Chain	#Chirality outliers	#Planarity outliers
1	A	0	1
1	B	0	1
All	All	0	2

All (4) bond length outliers are listed below:

Mol	Chain	Res	Type	Atoms	Z	Observed(Å)	Ideal(Å)
1	B	892	GLU	CD-OE1	-8.46	1.16	1.25
1	A	930[A]	SER	CB-OG	-6.57	1.33	1.42
1	A	930[B]	SER	CB-OG	-6.57	1.33	1.42
1	A	886	HIS	CG-CD2	-5.36	1.26	1.35

All (11) bond angle outliers are listed below:

Mol	Chain	Res	Type	Atoms	Z	Observed(°)	Ideal(°)
1	B	1006	ARG	NE-CZ-NH2	-8.13	116.24	120.30
1	A	1006	ARG	NE-CZ-NH2	-6.87	116.87	120.30
1	B	948	ARG	NE-CZ-NH1	6.18	123.39	120.30
1	A	948	ARG	NE-CZ-NH2	-6.01	117.29	120.30
1	B	989[A]	ASP	CB-CG-OD1	5.92	123.63	118.30

Continued on next page...

Continued from previous page...

Mol	Chain	Res	Type	Atoms	Z	Observed(°)	Ideal(°)
1	B	989[B]	ASP	CB-CG-OD1	5.92	123.63	118.30
1	A	886	HIS	CG-ND1-CE1	5.54	115.96	108.20
1	A	948	ARG	NE-CZ-NH1	5.47	123.04	120.30
1	B	958	LEU	CB-CG-CD1	5.23	119.90	111.00
1	A	813	ARG	NE-CZ-NH1	5.19	122.90	120.30
1	B	1058	HIS	CG-CD2-NE2	-5.07	99.57	109.20

There are no chirality outliers.

All (2) planarity outliers are listed below:

Mol	Chain	Res	Type	Group
1	A	1058	HIS	Sidechain
1	B	1058	HIS	Sidechain

5.2 Too-close contacts ⓘ

In the following table, the Non-H and H(model) columns list the number of non-hydrogen atoms and hydrogen atoms in the chain respectively. The H(added) column lists the number of hydrogen atoms added and optimized by MolProbity. The Clashes column lists the number of clashes within the asymmetric unit, whereas Symm-Clashes lists symmetry related clashes.

Mol	Chain	Non-H	H(model)	H(added)	Clashes	Symm-Clashes
1	A	2368	0	2197	15	0
1	B	2358	0	2186	14	0
2	A	13	0	10	0	0
2	B	13	0	10	0	0
3	A	18	0	23	1	0
3	B	24	0	30	2	0
4	A	4	0	3	0	0
4	B	4	0	3	0	0
5	A	10	0	0	0	0
5	B	10	0	0	0	0
6	A	345	0	0	9	0
6	B	341	0	0	6	0
All	All	5508	0	4462	27	0

The all-atom clashscore is defined as the number of clashes found per 1000 atoms (including hydrogen atoms). The all-atom clashscore for this structure is 3.

All (27) close contacts within the same asymmetric unit are listed below, sorted by their clash magnitude.

Atom-1	Atom-2	Interatomic distance (Å)	Clash overlap (Å)
1:A:1000:ARG:HD3	6:B:3163:HOH:O	1.69	0.90
1:A:819:TYR:OH	1:A:892:GLU:OE2	1.92	0.87
1:A:965[A]:VAL:CG1	6:A:3236:HOH:O	2.21	0.87
1:B:819:TYR:OH	1:B:892:GLU:OE2	1.97	0.82
1:A:835[B]:THR:HG22	1:A:840:THR:OG1	1.88	0.73
1:B:855:LYS:NZ	6:B:3093:HOH:O	2.24	0.70
1:A:965[A]:VAL:HG13	6:A:3236:HOH:O	1.90	0.66
1:A:965[A]:VAL:HG12	6:A:3236:HOH:O	1.92	0.65
3:A:2089:GOL:O1	6:A:3343:HOH:O	2.14	0.65
1:B:823:CYS:HB2	1:B:886:HIS:CE1	2.37	0.59
1:A:1006:ARG:NE	6:A:3244:HOH:O	2.36	0.57
1:A:835[B]:THR:CG2	1:A:840:THR:OG1	2.51	0.57
1:A:1006:ARG:CZ	6:A:3244:HOH:O	2.55	0.55
1:B:915[A]:GLN:HE22	3:B:2089:GOL:H2	1.72	0.55
1:B:1081:HIS:HD2	6:B:3302:HOH:O	1.90	0.55
1:A:911[A]:GLN:HB3	6:B:3208:HOH:O	2.10	0.52
1:A:1081:HIS:HD2	6:A:3303:HOH:O	1.92	0.51
1:B:915[A]:GLN:HE22	3:B:2089:GOL:C2	2.26	0.48
1:A:966:ASN:HD21	1:B:911[B]:GLN:HE22	1.62	0.48
1:A:1005:LYS:HD3	1:A:1035:PRO:O	2.14	0.47
6:A:3174:HOH:O	1:B:911[B]:GLN:HG2	2.17	0.45
1:B:911[A]:GLN:HB3	6:B:3167:HOH:O	2.17	0.44
1:A:982[A]:TRP:O	1:B:982[A]:TRP:O	2.36	0.43
1:B:823:CYS:CB	1:B:886:HIS:CE1	3.02	0.43
1:A:966:ASN:HD21	1:B:911[B]:GLN:NE2	2.16	0.43
1:B:1081:HIS:CD2	6:B:3302:HOH:O	2.69	0.41
6:A:3210:HOH:O	1:B:911[A]:GLN:HG2	2.22	0.40

There are no symmetry-related clashes.

5.3 Torsion angles ⓘ

5.3.1 Protein backbone ⓘ

In the following table, the Percentiles column shows the percent Ramachandran outliers of the chain as a percentile score with respect to all X-ray entries followed by that with respect to entries of similar resolution.

The Analysed column shows the number of residues for which the backbone conformation was analysed, and the total number of residues.

Mol	Chain	Analysed	Favoured	Allowed	Outliers	Percentiles	
1	A	298/297 (100%)	288 (97%)	10 (3%)	0	100	100
1	B	296/297 (100%)	286 (97%)	10 (3%)	0	100	100
All	All	594/594 (100%)	574 (97%)	20 (3%)	0	100	100

There are no Ramachandran outliers to report.

5.3.2 Protein sidechains ⓘ

In the following table, the Percentiles column shows the percent sidechain outliers of the chain as a percentile score with respect to all X-ray entries followed by that with respect to entries of similar resolution.

The Analysed column shows the number of residues for which the sidechain conformation was analysed, and the total number of residues.

Mol	Chain	Analysed	Rotameric	Outliers	Percentiles	
1	A	255/250 (102%)	251 (98%)	4 (2%)	62	33
1	B	253/250 (101%)	252 (100%)	1 (0%)	91	78
All	All	508/500 (102%)	503 (99%)	5 (1%)	81	53

All (5) residues with a non-rotameric sidechain are listed below:

Mol	Chain	Res	Type
1	A	803	SER
1	A	911[A]	GLN
1	A	911[B]	GLN
1	A	1011	PHE
1	B	1011	PHE

Some sidechains can be flipped to improve hydrogen bonding and reduce clashes. All (9) such sidechains are listed below:

Mol	Chain	Res	Type
1	A	919	GLN
1	A	999	ASN
1	A	1023	ASN
1	A	1081	HIS
1	B	876	ASN
1	B	919	GLN
1	B	999	ASN
1	B	1081	HIS

Continued on next page...

Continued from previous page...

Mol	Chain	Res	Type
1	B	1082	HIS

5.3.3 RNA [i](#)

There are no RNA molecules in this entry.

5.4 Non-standard residues in protein, DNA, RNA chains [i](#)

There are no non-standard protein/DNA/RNA residues in this entry.

5.5 Carbohydrates [i](#)

There are no carbohydrates in this entry.

5.6 Ligand geometry [i](#)

Of 31 ligands modelled in this entry, 20 are monoatomic - leaving 11 for Mogul analysis.

In the following table, the Counts columns list the number of bonds (or angles) for which Mogul statistics could be retrieved, the number of bonds (or angles) that are observed in the model and the number of bonds (or angles) that are defined in the Chemical Component Dictionary. The Link column lists molecule types, if any, to which the group is linked. The Z score for a bond length (or angle) is the number of standard deviations the observed value is removed from the expected value. A bond length (or angle) with $|Z| > 2$ is considered an outlier worth inspection. RMSZ is the root-mean-square of all Z scores of the bond lengths (or angles).

Mol	Type	Chain	Res	Link	Bond lengths			Bond angles		
					Counts	RMSZ	$\# Z > 2$	Counts	RMSZ	$\# Z > 2$
2	VXX	A	2086	-	13,13,13	1.48	2 (15%)	17,17,17	1.02	1 (5%)
4	ACT	B	2091	5	1,3,3	0.21	0	0,3,3	0.00	-
3	GOL	B	2090	-	5,5,5	0.77	0	5,5,5	0.86	0
3	GOL	A	2087	-	5,5,5	1.10	1 (20%)	5,5,5	0.34	0
4	ACT	A	2090	5	1,3,3	0.09	0	0,3,3	0.00	-
3	GOL	B	2087	-	5,5,5	0.79	0	5,5,5	0.49	0
2	VXX	B	2086	-	13,13,13	1.73	2 (15%)	17,17,17	1.46	2 (11%)
3	GOL	B	2088	5	5,5,5	0.38	0	5,5,5	0.18	0
3	GOL	B	2089	-	5,5,5	0.49	0	5,5,5	1.54	1 (20%)
3	GOL	A	2089	-	5,5,5	0.94	0	5,5,5	0.81	0
3	GOL	A	2088	-	5,5,5	0.90	0	5,5,5	0.62	0

In the following table, the Chirals column lists the number of chiral outliers, the number of chiral centers analysed, the number of these observed in the model and the number defined in the Chemical Component Dictionary. Similar counts are reported in the Torsion and Rings columns. '-' means no outliers of that kind were identified.

Mol	Type	Chain	Res	Link	Chirals	Torsions	Rings
2	VXX	A	2086	-	-	0/8/8/8	0/1/1/1
3	GOL	B	2090	-	-	0/4/4/4	-
3	GOL	A	2087	-	-	0/4/4/4	-
3	GOL	B	2087	-	-	0/4/4/4	-
2	VXX	B	2086	-	-	0/8/8/8	0/1/1/1
3	GOL	B	2088	5	-	0/4/4/4	-
3	GOL	B	2089	-	-	3/4/4/4	-
3	GOL	A	2089	-	-	0/4/4/4	-
3	GOL	A	2088	-	-	0/4/4/4	-

All (5) bond length outliers are listed below:

Mol	Chain	Res	Type	Atoms	Z	Observed(Å)	Ideal(Å)
2	B	2086	VXX	O2-CC	4.74	1.43	1.33
2	A	2086	VXX	O2-CC	3.95	1.42	1.33
2	B	2086	VXX	CZ-CM2	3.05	1.45	1.40
2	A	2086	VXX	CZ-CM2	2.65	1.45	1.40
3	A	2087	GOL	O2-C2	-2.44	1.36	1.43

All (4) bond angle outliers are listed below:

Mol	Chain	Res	Type	Atoms	Z	Observed(°)	Ideal(°)
2	B	2086	VXX	CV-OM-CM2	3.94	123.48	117.53
2	B	2086	VXX	CO1-CM1-CZ	-2.72	117.71	120.50
2	A	2086	VXX	CV-OM-CM2	2.15	120.78	117.53
3	B	2089	GOL	O3-C3-C2	-2.13	100.00	110.20

There are no chirality outliers.

All (3) torsion outliers are listed below:

Mol	Chain	Res	Type	Atoms
3	B	2089	GOL	C1-C2-C3-O3
3	B	2089	GOL	O1-C1-C2-C3
3	B	2089	GOL	O2-C2-C3-O3

There are no ring outliers.

2 monomers are involved in 3 short contacts:

Mol	Chain	Res	Type	Clashes	Symm-Clashes
3	B	2089	GOL	2	0
3	A	2089	GOL	1	0

5.7 Other polymers [i](#)

There are no such residues in this entry.

5.8 Polymer linkage issues [i](#)

There are no chain breaks in this entry.

6 Fit of model and data [i](#)

6.1 Protein, DNA and RNA chains [i](#)

In the following table, the column labelled ‘#RSRZ> 2’ contains the number (and percentage) of RSRZ outliers, followed by percent RSRZ outliers for the chain as percentile scores relative to all X-ray entries and entries of similar resolution. The OWAB column contains the minimum, median, 95th percentile and maximum values of the occupancy-weighted average B-factor per residue. The column labelled ‘Q< 0.9’ lists the number of (and percentage) of residues with an average occupancy less than 0.9.

Mol	Chain	Analysed	<RSRZ>	#RSRZ>2	OWAB(Å ²)	Q<0.9
1	A	283/297 (95%)	-0.45	3 (1%) 80 79	7, 12, 20, 32	0
1	B	283/297 (95%)	-0.39	5 (1%) 68 68	8, 12, 20, 34	0
All	All	566/594 (95%)	-0.42	8 (1%) 75 74	7, 12, 20, 34	0

All (8) RSRZ outliers are listed below:

Mol	Chain	Res	Type	RSRZ
1	B	803	SER	5.8
1	A	803	SER	4.2
1	B	1080	HIS	3.0
1	B	1082	HIS	2.9
1	B	876	ASN	2.3
1	B	1081	HIS	2.2
1	A	876	ASN	2.1
1	A	1000	ARG	2.1

6.2 Non-standard residues in protein, DNA, RNA chains [i](#)

There are no non-standard protein/DNA/RNA residues in this entry.

6.3 Carbohydrates [i](#)

There are no carbohydrates in this entry.

6.4 Ligands [i](#)

In the following table, the Atoms column lists the number of modelled atoms in the group and the number defined in the chemical component dictionary. The B-factors column lists the minimum,

median, 95th percentile and maximum values of B factors of atoms in the group. The column labelled 'Q< 0.9' lists the number of atoms with occupancy less than 0.9.

Mol	Type	Chain	Res	Atoms	RSCC	RSR	B-factors(Å ²)	Q<0.9
4	ACT	B	2091	4/4	0.72	0.32	34,35,35,37	0
4	ACT	A	2090	4/4	0.72	0.24	30,31,31,32	0
3	GOL	A	2089	6/6	0.84	0.14	23,27,28,33	0
3	GOL	B	2087	6/6	0.91	0.21	19,24,26,26	0
3	GOL	B	2090	6/6	0.93	0.11	14,21,22,22	0
2	VXX	B	2086	13/13	0.93	0.12	14,18,22,24	0
3	GOL	A	2087	6/6	0.93	0.22	18,25,27,27	0
3	GOL	A	2088	6/6	0.93	0.13	13,17,19,20	0
3	GOL	B	2089	6/6	0.94	0.09	19,24,28,35	0
2	VXX	A	2086	13/13	0.95	0.09	13,17,23,26	0
5	CD	A	2095	1/1	0.96	0.12	30,30,30,30	1
5	CD	B	2096	1/1	0.97	0.15	34,34,34,34	1
5	CD	B	2100	1/1	0.98	0.38	33,33,33,33	1
5	CD	A	2099	1/1	0.98	0.13	28,28,28,28	1
3	GOL	B	2088	6/6	0.98	0.05	11,12,12,13	0
5	CD	A	2098	1/1	0.99	0.21	29,29,29,29	1
5	CD	B	2097	1/1	0.99	0.11	23,23,23,23	1
5	CD	B	2101	1/1	0.99	0.28	29,29,29,29	1
5	CD	A	2092	1/1	1.00	0.03	12,12,12,12	0
5	CD	B	2092	1/1	1.00	0.03	11,11,11,11	0
5	CD	A	2096	1/1	1.00	0.04	20,20,20,20	1
5	CD	A	2093	1/1	1.00	0.15	9,9,9,9	1
5	CD	B	2098	1/1	1.00	0.09	17,17,17,17	1
5	CD	B	2095	1/1	1.00	0.13	12,12,12,12	1
5	CD	B	2099	1/1	1.00	0.16	17,17,17,17	1
5	CD	B	2094	1/1	1.00	0.03	15,15,15,15	0
5	CD	A	2097	1/1	1.00	0.18	17,17,17,17	1
5	CD	A	2094	1/1	1.00	0.18	12,12,12,12	1
5	CD	A	2091	1/1	1.00	0.03	11,11,11,11	0
5	CD	B	2093	1/1	1.00	0.02	12,12,12,12	0
5	CD	A	2100	1/1	1.00	0.29	27,27,27,27	1

6.5 Other polymers ⓘ

There are no such residues in this entry.