



Full wwPDB X-ray Structure Validation Report ⓘ

May 13, 2020 – 06:55 am BST

PDB ID : 2WBQ
Title : Crystal structure of VioC in complex with (2S,3S)-hydroxyarginine
Authors : Helmetag, V.; Samel, S.A.; Thomas, M.G.; Marahiel, M.A.; Essen, L.-O.
Deposited on : 2009-03-02
Resolution : 1.10 Å(reported)

This is a Full wwPDB X-ray Structure Validation Report for a publicly released PDB entry.

We welcome your comments at validation@mail.wwpdb.org

A user guide is available at

<https://www.wwpdb.org/validation/2017/XrayValidationReportHelp>

with specific help available everywhere you see the ⓘ symbol.

The following versions of software and data (see [references ⓘ](#)) were used in the production of this report:

MolProbity : 4.02b-467
Mogul : 1.8.5 (274361), CSD as541be (2020)
Xtriage (Phenix) : 1.13
EDS : 2.11
Percentile statistics : 20191225.v01 (using entries in the PDB archive December 25th 2019)
Refmac : 5.8.0158
CCP4 : 7.0.044 (Gargrove)
Ideal geometry (proteins) : Engh & Huber (2001)
Ideal geometry (DNA, RNA) : Parkinson et al. (1996)
Validation Pipeline (wwPDB-VP) : 2.11

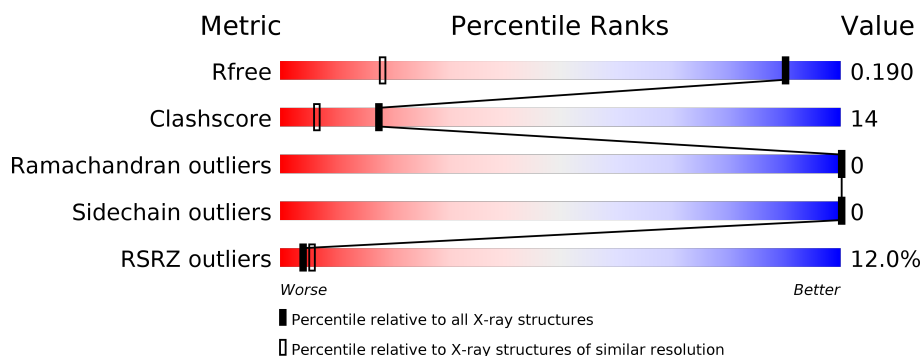
1 Overall quality at a glance

The following experimental techniques were used to determine the structure:

X-RAY DIFFRACTION

The reported resolution of this entry is 1.10 Å.

Percentile scores (ranging between 0-100) for global validation metrics of the entry are shown in the following graphic. The table shows the number of entries on which the scores are based.



Metric	Whole archive (#Entries)	Similar resolution (#Entries, resolution range(Å))
R_{free}	130704	1619 (1.14-1.06)
Clashscore	141614	1671 (1.14-1.06)
Ramachandran outliers	138981	1615 (1.14-1.06)
Sidechain outliers	138945	1613 (1.14-1.06)
RSRZ outliers	127900	1588 (1.14-1.06)

The table below summarises the geometric issues observed across the polymeric chains and their fit to the electron density. The red, orange, yellow and green segments on the lower bar indicate the fraction of residues that contain outliers for ≥ 3 , 2, 1 and 0 types of geometric quality criteria respectively. A grey segment represents the fraction of residues that are not modelled. The numeric value for each fraction is indicated below the corresponding segment, with a dot representing fractions $\leq 5\%$. The upper red bar (where present) indicates the fraction of residues that have poor fit to the electron density. The numeric value is given above the bar.

Mol	Chain	Length	Quality of chain
1	A	358	

2 Entry composition [i](#)

There are 4 unique types of molecules in this entry. The entry contains 3232 atoms, of which 0 are hydrogens and 0 are deuteriums.

In the tables below, the ZeroOcc column contains the number of atoms modelled with zero occupancy, the AltConf column contains the number of residues with at least one atom in alternate conformation and the Trace column contains the number of residues modelled with at most 2 atoms.

- Molecule 1 is a protein called L-ARGININE BETA-HYDROXYLASE.

Mol	Chain	Residues	Atoms					ZeroOcc	AltConf	Trace
			Total	C	N	O	S			
1	A	332	2741	1729	517	491	4	0	21	0

There is a discrepancy between the modelled and reference sequences:

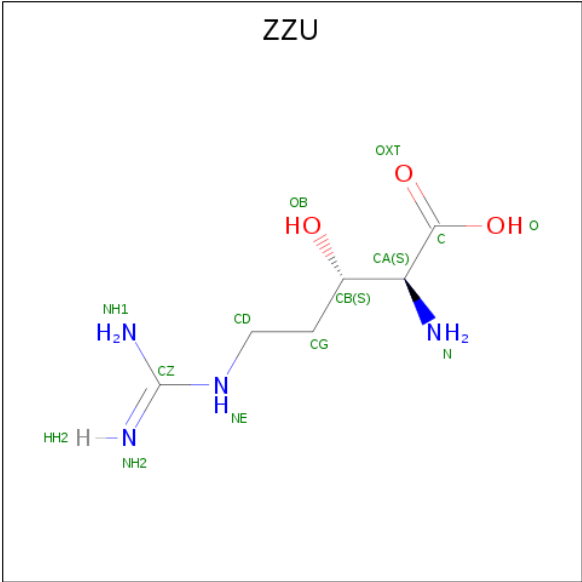
Chain	Residue	Modelled	Actual	Comment	Reference
A	69	LYS	ARG	conflict	UNP Q6WZB0

- Molecule 2 is ACETATE ION (three-letter code: ACT) (formula: $C_2H_3O_2$).



Mol	Chain	Residues	Atoms			ZeroOcc	AltConf
			Total	C	O		
2	A	1	4	2	2	0	0

- Molecule 3 is (2S,3S)-3-HYDROXYARGININE (three-letter code: ZZU) (formula: $C_6H_{14}N_4O_3$).



Mol	Chain	Residues	Atoms				ZeroOcc	AltConf
3	A	1	Total	C	N	O	0	1
			26	12	8	6		

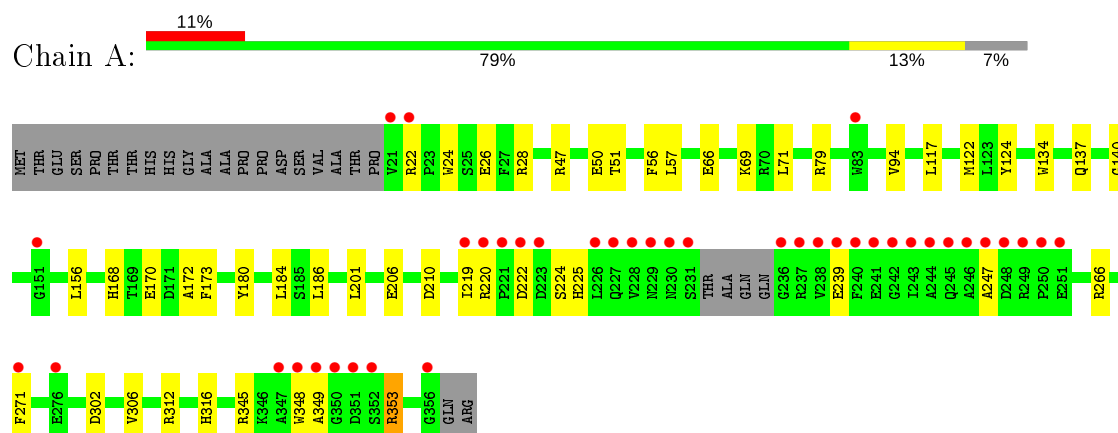
- Molecule 4 is water.

Mol	Chain	Residues	Atoms		ZeroOcc	AltConf
4	A	461	Total	O	0	0
			461	461		

3 Residue-property plots [i](#)

These plots are drawn for all protein, RNA and DNA chains in the entry. The first graphic for a chain summarises the proportions of the various outlier classes displayed in the second graphic. The second graphic shows the sequence view annotated by issues in geometry and electron density. Residues are color-coded according to the number of geometric quality criteria for which they contain at least one outlier: green = 0, yellow = 1, orange = 2 and red = 3 or more. A red dot above a residue indicates a poor fit to the electron density ($RSRZ > 2$). Stretches of 2 or more consecutive residues without any outlier are shown as a green connector. Residues present in the sample, but not in the model, are shown in grey.

- Molecule 1: L-ARGININE BETA-HYDROXYLASE



4 Data and refinement statistics

Property	Value	Source
Space group	C 1 2 1	Depositor
Cell constants a, b, c, α , β , γ	80.91Å 66.83Å 62.73Å 90.00° 109.17° 90.00°	Depositor
Resolution (Å)	19.75 – 1.10 19.55 – 1.10	Depositor EDS
% Data completeness (in resolution range)	96.8 (19.75-1.10) 96.8 (19.55-1.10)	Depositor EDS
R_{merge}	0.04	Depositor
R_{sym}	(Not available)	Depositor
$\langle I/\sigma(I) \rangle$ ¹	1.52 (at 1.10Å)	Xtriage
Refinement program	REFMAC 5.2.0019	Depositor
R, R_{free}	0.143 , 0.178 0.158 , 0.190	Depositor DCC
R_{free} test set	2249 reflections (1.82%)	wwPDB-VP
Wilson B-factor (Å ²)	11.0	Xtriage
Anisotropy	0.121	Xtriage
Bulk solvent k_{sol} (e/Å ³), B_{sol} (Å ²)	0.39 , 62.1	EDS
L-test for twinning ²	$\langle L \rangle = 0.49$, $\langle L^2 \rangle = 0.32$	Xtriage
Estimated twinning fraction	No twinning to report.	Xtriage
F_o, F_c correlation	0.98	EDS
Total number of atoms	3232	wwPDB-VP
Average B, all atoms (Å ²)	19.0	wwPDB-VP

Xtriage's analysis on translational NCS is as follows: *The largest off-origin peak in the Patterson function is 7.29% of the height of the origin peak. No significant pseudotranslation is detected.*

¹Intensities estimated from amplitudes.

²Theoretical values of $\langle |L| \rangle$, $\langle L^2 \rangle$ for acentric reflections are 0.5, 0.333 respectively for untwinned datasets, and 0.375, 0.2 for perfectly twinned datasets.

5 Model quality [i](#)

5.1 Standard geometry [i](#)

Bond lengths and bond angles in the following residue types are not validated in this section: ZZU, ACT

The Z score for a bond length (or angle) is the number of standard deviations the observed value is removed from the expected value. A bond length (or angle) with $|Z| > 5$ is considered an outlier worth inspection. RMSZ is the root-mean-square of all Z scores of the bond lengths (or angles).

Mol	Chain	Bond lengths		Bond angles	
		RMSZ	$\# Z > 5$	RMSZ	$\# Z > 5$
1	A	0.54	0/2857	0.73	2/3879 (0.1%)

There are no bond length outliers.

All (2) bond angle outliers are listed below:

Mol	Chain	Res	Type	Atoms	Z	Observed($^{\circ}$)	Ideal($^{\circ}$)
1	A	353	ARG	NE-CZ-NH1	6.55	123.58	120.30
1	A	353	ARG	NE-CZ-NH2	-5.53	117.53	120.30

There are no chirality outliers.

There are no planarity outliers.

5.2 Too-close contacts [i](#)

In the following table, the Non-H and H(model) columns list the number of non-hydrogen atoms and hydrogen atoms in the chain respectively. The H(added) column lists the number of hydrogen atoms added and optimized by MolProbity. The Clashes column lists the number of clashes within the asymmetric unit, whereas Symm-Clashes lists symmetry related clashes.

Mol	Chain	Non-H	H(model)	H(added)	Clashes	Symm-Clashes
1	A	2741	0	2753	76	0
2	A	4	0	3	0	0
3	A	26	0	24	2	0
4	A	461	0	0	23	3
All	All	3232	0	2780	76	3

The all-atom clashscore is defined as the number of clashes found per 1000 atoms (including hydrogen atoms). The all-atom clashscore for this structure is 14.

All (76) close contacts within the same asymmetric unit are listed below, sorted by their clash magnitude.

Atom-1	Atom-2	Interatomic distance (Å)	Clash overlap (Å)
1:A:219[A]:ILE:O	1:A:220[A]:ARG:CG	1.70	1.40
1:A:219[B]:ILE:HD11	4:A:2265:HOH:O	1.18	1.26
1:A:219[A]:ILE:O	1:A:220[A]:ARG:HG2	1.02	1.19
1:A:219[B]:ILE:CD1	4:A:2265:HOH:O	1.66	1.19
1:A:51:THR:HB	1:A:122[B]:MET:SD	1.88	1.12
1:A:316:HIS:NE2	4:A:2419:HOH:O	1.81	1.10
1:A:219[A]:ILE:HG22	1:A:220[A]:ARG:H	0.93	1.08
1:A:219[A]:ILE:CG2	1:A:220[A]:ARG:H	1.63	1.05
1:A:219[A]:ILE:O	1:A:220[A]:ARG:CD	2.04	1.05
1:A:173:PHE:HA	1:A:219[B]:ILE:HD12	1.39	1.04
1:A:219[A]:ILE:C	1:A:220[A]:ARG:HG2	1.73	0.99
1:A:184[B]:LEU:HD13	1:A:306:VAL:HG22	1.52	0.89
1:A:57:LEU:HD23	1:A:122[A]:MET:HE1	1.59	0.84
1:A:239:GLU:OE2	1:A:349:ALA:HB1	1.77	0.83
1:A:69[A]:LYS:CE	4:A:2106:HOH:O	2.23	0.83
1:A:312[B]:ARG:HG3	1:A:312[B]:ARG:HH11	1.45	0.82
1:A:57:LEU:HD23	1:A:122[A]:MET:CE	2.10	0.80
1:A:173:PHE:HA	1:A:219[B]:ILE:CD1	2.11	0.80
1:A:69[B]:LYS:NZ	4:A:2107:HOH:O	2.14	0.79
1:A:220[B]:ARG:HG2	1:A:247:ALA:HA	1.68	0.76
1:A:184[B]:LEU:HD13	1:A:306:VAL:CG2	2.18	0.72
1:A:137[B]:GLN:NE2	1:A:225:HIS:NE2	2.39	0.71
1:A:222:ASP:OD2	4:A:2320:HOH:O	2.07	0.70
1:A:66[B]:GLU:OE1	4:A:2100:HOH:O	2.09	0.70
1:A:173:PHE:CA	1:A:219[B]:ILE:HD12	2.22	0.66
1:A:137[B]:GLN:NE2	1:A:224:SER:OG	2.29	0.65
1:A:210[B]:ASP:OD1	4:A:2311:HOH:O	2.14	0.65
1:A:94:VAL:O	4:A:2161:HOH:O	2.15	0.64
1:A:22[A]:ARG:HD3	1:A:24:TRP:CZ2	2.32	0.64
1:A:316:HIS:CE1	4:A:2419:HOH:O	2.36	0.63
1:A:312[B]:ARG:NH2	4:A:2417:HOH:O	2.32	0.63
1:A:22[B]:ARG:HH11	1:A:22[B]:ARG:HG3	1.63	0.63
1:A:168[B]:HIS:CE1	3:A:1358[B]:ZZU:HD1C	2.34	0.62
1:A:345[B]:ARG:HA	1:A:348:TRP:CD1	2.34	0.62
1:A:219[B]:ILE:O	1:A:220[B]:ARG:HG3	2.00	0.61
1:A:69[A]:LYS:NZ	4:A:2106:HOH:O	1.97	0.60
1:A:170:GLU:OE1	4:A:2419:HOH:O	2.16	0.60
1:A:219[A]:ILE:O	1:A:220[A]:ARG:HD3	1.97	0.60
1:A:219[A]:ILE:C	1:A:220[A]:ARG:CG	2.49	0.59
1:A:50:GLU:HB2	4:A:2067:HOH:O	2.03	0.57

Continued on next page...

Continued from previous page...

Atom-1	Atom-2	Interatomic distance (Å)	Clash overlap (Å)
1:A:206[B]:GLU:HG3	4:A:2308:HOH:O	2.05	0.56
1:A:219[B]:ILE:HD13	4:A:2265:HOH:O	1.56	0.56
1:A:57:LEU:HD13	1:A:353:ARG:HG3	1.88	0.55
1:A:69[B]:LYS:CE	4:A:2107:HOH:O	2.52	0.55
1:A:220[B]:ARG:HB3	4:A:2319:HOH:O	2.07	0.55
1:A:201[A]:LEU:CD1	4:A:2144:HOH:O	2.57	0.53
1:A:57:LEU:HD23	1:A:122[A]:MET:HE2	1.92	0.52
1:A:117:LEU:HD13	1:A:186:LEU:CD2	2.40	0.51
1:A:22[B]:ARG:NH1	1:A:22[B]:ARG:HG3	2.26	0.51
1:A:26:GLU:OE2	1:A:28[B]:ARG:NE	2.45	0.50
1:A:302[A]:ASP:OD1	4:A:2408:HOH:O	2.20	0.49
1:A:137[B]:GLN:HE21	1:A:225:HIS:CD2	2.30	0.47
1:A:345[B]:ARG:HA	1:A:348:TRP:CG	2.50	0.47
1:A:137[B]:GLN:NE2	1:A:225:HIS:CD2	2.82	0.47
1:A:168[B]:HIS:NE2	3:A:1358[B]:ZZU:HD1C	2.31	0.46
1:A:173:PHE:HA	1:A:219[B]:ILE:CG1	2.45	0.45
1:A:184[B]:LEU:CD1	1:A:306:VAL:HG22	2.35	0.45
1:A:22[A]:ARG:HD3	1:A:24:TRP:CH2	2.52	0.45
1:A:47:ARG:HG3	4:A:2057:HOH:O	2.17	0.45
1:A:22[B]:ARG:HD2	1:A:24:TRP:O	2.16	0.45
1:A:219[A]:ILE:O	1:A:220[A]:ARG:NE	2.50	0.44
1:A:137[B]:GLN:NE2	1:A:225:HIS:CE1	2.86	0.43
1:A:266:ARG:NH2	4:A:2358:HOH:O	2.24	0.43
1:A:79[A]:ARG:HG3	1:A:180:TYR:OH	2.19	0.43
1:A:71:LEU:HD21	1:A:124:TYR:CE1	2.54	0.43
1:A:117:LEU:HD13	1:A:186:LEU:HD23	2.01	0.42
1:A:56:PHE:CE2	1:A:122[A]:MET:HG2	2.55	0.42
1:A:172:ALA:HB1	1:A:219[A]:ILE:CD1	2.50	0.41
1:A:201[A]:LEU:HD11	4:A:2144:HOH:O	2.20	0.41
1:A:22[B]:ARG:NH2	1:A:26:GLU:H	2.18	0.41
1:A:134:TRP:O	1:A:140:GLY:HA2	2.21	0.41
1:A:156:LEU:HD13	1:A:271[A]:PHE:CZ	2.56	0.41

All (3) symmetry-related close contacts are listed below. The label for Atom-2 includes the symmetry operator and encoded unit-cell translations to be applied.

Atom-1	Atom-2	Interatomic distance (Å)	Clash overlap (Å)
4:A:2385:HOH:O	4:A:2434:HOH:O[4_556]	1.79	0.41
4:A:2169:HOH:O	4:A:2294:HOH:O[3_545]	1.90	0.30
4:A:2093:HOH:O	4:A:2125:HOH:O[2_555]	1.90	0.30

5.3 Torsion angles [i](#)

5.3.1 Protein backbone [i](#)

In the following table, the Percentiles column shows the percent Ramachandran outliers of the chain as a percentile score with respect to all X-ray entries followed by that with respect to entries of similar resolution.

The Analysed column shows the number of residues for which the backbone conformation was analysed, and the total number of residues.

Mol	Chain	Analysed	Favoured	Allowed	Outliers	Percentiles	
1	A	349/358 (98%)	343 (98%)	6 (2%)	0	100	100

There are no Ramachandran outliers to report.

5.3.2 Protein sidechains [i](#)

In the following table, the Percentiles column shows the percent sidechain outliers of the chain as a percentile score with respect to all X-ray entries followed by that with respect to entries of similar resolution.

The Analysed column shows the number of residues for which the sidechain conformation was analysed, and the total number of residues.

Mol	Chain	Analysed	Rotameric	Outliers	Percentiles	
1	A	285/285 (100%)	285 (100%)	0	100	100

There are no protein residues with a non-rotameric sidechain to report.

Some sidechains can be flipped to improve hydrogen bonding and reduce clashes. All (1) such sidechains are listed below:

Mol	Chain	Res	Type
1	A	342	HIS

5.3.3 RNA [i](#)

There are no RNA molecules in this entry.

5.4 Non-standard residues in protein, DNA, RNA chains [i](#)

There are no non-standard protein/DNA/RNA residues in this entry.

5.5 Carbohydrates

There are no carbohydrates in this entry.

5.6 Ligand geometry

3 ligands are modelled in this entry.

In the following table, the Counts columns list the number of bonds (or angles) for which Mogul statistics could be retrieved, the number of bonds (or angles) that are observed in the model and the number of bonds (or angles) that are defined in the Chemical Component Dictionary. The Link column lists molecule types, if any, to which the group is linked. The Z score for a bond length (or angle) is the number of standard deviations the observed value is removed from the expected value. A bond length (or angle) with $|Z| > 2$ is considered an outlier worth inspection. RMSZ is the root-mean-square of all Z scores of the bond lengths (or angles).

Mol	Type	Chain	Res	Link	Bond lengths			Bond angles		
					Counts	RMSZ	$\# Z > 2$	Counts	RMSZ	$\# Z > 2$
2	ACT	A	1357	-	1,3,3	2.49	1 (100%)	0,3,3	0.00	-
3	ZZU	A	1358[A]	-	8,12,12	0.71	0	6,15,15	1.28	1 (16%)
3	ZZU	A	1358[B]	-	8,12,12	0.34	0	6,15,15	0.62	0

In the following table, the Chirals column lists the number of chiral outliers, the number of chiral centers analysed, the number of these observed in the model and the number defined in the Chemical Component Dictionary. Similar counts are reported in the Torsion and Rings columns. '-' means no outliers of that kind were identified.

Mol	Type	Chain	Res	Link	Chirals	Torsions	Rings
3	ZZU	A	1358[B]	-	-	1/10/14/14	-
3	ZZU	A	1358[A]	-	-	3/10/14/14	-

All (1) bond length outliers are listed below:

Mol	Chain	Res	Type	Atoms	Z	Observed(Å)	Ideal(Å)
2	A	1357	ACT	CH3-C	2.49	1.51	1.48

All (1) bond angle outliers are listed below:

Mol	Chain	Res	Type	Atoms	Z	Observed(°)	Ideal(°)
3	A	1358[A]	ZZU	CG-CD-NE	2.90	120.25	111.87

There are no chirality outliers.

All (4) torsion outliers are listed below:

Mol	Chain	Res	Type	Atoms
3	A	1358[A]	ZZU	CA-CB-CG-CD
3	A	1358[A]	ZZU	NE-CD-CG-CB
3	A	1358[B]	ZZU	NE-CD-CG-CB
3	A	1358[A]	ZZU	OB-CB-CG-CD

There are no ring outliers.

1 monomer is involved in 2 short contacts:

Mol	Chain	Res	Type	Clashes	Symm-Clashes
3	A	1358[B]	ZZU	2	0

5.7 Other polymers [i](#)

There are no such residues in this entry.

5.8 Polymer linkage issues [i](#)

There are no chain breaks in this entry.

6 Fit of model and data ⓘ

6.1 Protein, DNA and RNA chains ⓘ

In the following table, the column labelled ‘#RSRZ> 2’ contains the number (and percentage) of RSRZ outliers, followed by percent RSRZ outliers for the chain as percentile scores relative to all X-ray entries and entries of similar resolution. The OWAB column contains the minimum, median, 95th percentile and maximum values of the occupancy-weighted average B-factor per residue. The column labelled ‘Q< 0.9’ lists the number of (and percentage) of residues with an average occupancy less than 0.9.

Mol	Chain	Analysed	<RSRZ>	#RSRZ>2	OWAB(Å ²)	Q<0.9
1	A	332/358 (92%)	0.40	40 (12%) 4 6	8, 13, 33, 68	25 (7%)

All (40) RSRZ outliers are listed below:

Mol	Chain	Res	Type	RSRZ
1	A	21	VAL	14.4
1	A	350	GLY	9.1
1	A	349	ALA	9.0
1	A	246	ALA	7.6
1	A	247	ALA	7.1
1	A	226	LEU	6.7
1	A	228	VAL	6.6
1	A	240	PHE	6.4
1	A	219[A]	ILE	6.3
1	A	249	ARG	6.1
1	A	248	ASP	5.8
1	A	237	ARG	5.7
1	A	242	GLY	5.5
1	A	236	GLY	5.3
1	A	244	ALA	4.7
1	A	231	SER	4.5
1	A	351	ASP	4.4
1	A	238	VAL	4.3
1	A	243	ILE	4.3
1	A	227	GLN	4.1
1	A	250	PRO	3.9
1	A	352	SER	3.9
1	A	220[A]	ARG	3.8
1	A	271[A]	PHE	3.8
1	A	245	GLN	3.7
1	A	251	GLU	3.6
1	A	230	ASN	3.3

Continued on next page...

Continued from previous page...

Mol	Chain	Res	Type	RSRZ
1	A	348	TRP	3.1
1	A	239	GLU	3.0
1	A	223	ASP	3.0
1	A	221	PRO	2.9
1	A	356	GLY	2.8
1	A	229	ASN	2.7
1	A	241	GLU	2.5
1	A	276	GLU	2.5
1	A	22[A]	ARG	2.3
1	A	83	TRP	2.2
1	A	347	ALA	2.2
1	A	222	ASP	2.2
1	A	151	GLY	2.0

6.2 Non-standard residues in protein, DNA, RNA chains [i](#)

There are no non-standard protein/DNA/RNA residues in this entry.

6.3 Carbohydrates [i](#)

There are no carbohydrates in this entry.

6.4 Ligands [i](#)

In the following table, the Atoms column lists the number of modelled atoms in the group and the number defined in the chemical component dictionary. The B-factors column lists the minimum, median, 95th percentile and maximum values of B factors of atoms in the group. The column labelled 'Q< 0.9' lists the number of atoms with occupancy less than 0.9.

Mol	Type	Chain	Res	Atoms	RSCC	RSR	B-factors(\AA^2)	Q<0.9
3	ZZU	A	1358[A]	13/13	0.81	0.20	14,23,36,37	13
3	ZZU	A	1358[B]	13/13	0.81	0.20	11,15,19,30	13
2	ACT	A	1357	4/4	0.92	0.12	13,14,14,22	0

6.5 Other polymers [i](#)

There are no such residues in this entry.