



Full wwPDB X-ray Structure Validation Report ⓘ

May 15, 2020 – 02:28 pm BST

PDB ID : 2WDU
Title : Fasciola hepatica sigma class GST
Authors : Line, K.; Isupov, M.N.; LaCourse, E.J.; Brophy, P.M.; Littlechild, J.A.
Deposited on : 2009-03-26
Resolution : 1.62 Å(reported)

This is a Full wwPDB X-ray Structure Validation Report for a publicly released PDB entry.

We welcome your comments at validation@mail.wwpdb.org

A user guide is available at

<https://www.wwpdb.org/validation/2017/XrayValidationReportHelp>

with specific help available everywhere you see the ⓘ symbol.

The following versions of software and data (see [references ⓘ](#)) were used in the production of this report:

MolProbity : 4.02b-467
Mogul : 1.8.5 (274361), CSD as541be (2020)
Xtriage (Phenix) : 1.13
EDS : 2.11
buster-report : 1.1.7 (2018)
Percentile statistics : 20191225.v01 (using entries in the PDB archive December 25th 2019)
Refmac : 5.8.0158
CCP4 : 7.0.044 (Gargrove)
Ideal geometry (proteins) : Engh & Huber (2001)
Ideal geometry (DNA, RNA) : Parkinson et al. (1996)
Validation Pipeline (wwPDB-VP) : 2.11

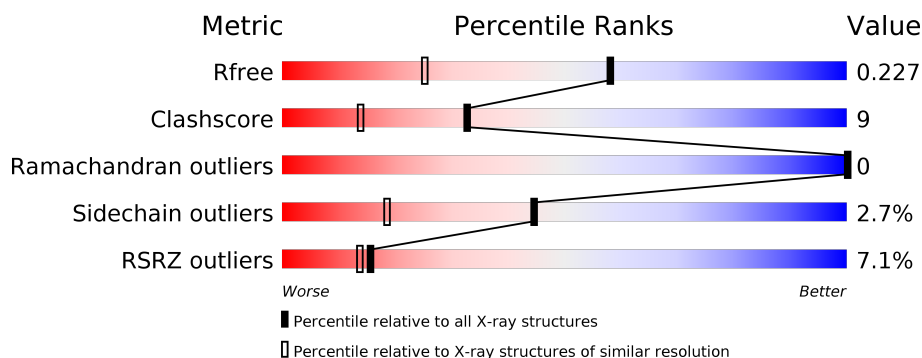
1 Overall quality at a glance

The following experimental techniques were used to determine the structure:

X-RAY DIFFRACTION

The reported resolution of this entry is 1.62 Å.

Percentile scores (ranging between 0-100) for global validation metrics of the entry are shown in the following graphic. The table shows the number of entries on which the scores are based.



Metric	Whole archive (#Entries)	Similar resolution (#Entries, resolution range(Å))
R_{free}	130704	4693 (1.64-1.60)
Clashscore	141614	5002 (1.64-1.60)
Ramachandran outliers	138981	4888 (1.64-1.60)
Sidechain outliers	138945	4887 (1.64-1.60)
RSRZ outliers	127900	4609 (1.64-1.60)

The table below summarises the geometric issues observed across the polymeric chains and their fit to the electron density. The red, orange, yellow and green segments on the lower bar indicate the fraction of residues that contain outliers for ≥ 3 , 2, 1 and 0 types of geometric quality criteria respectively. A grey segment represents the fraction of residues that are not modelled. The numeric value for each fraction is indicated below the corresponding segment, with a dot representing fractions $\leq 5\%$. The upper red bar (where present) indicates the fraction of residues that have poor fit to the electron density. The numeric value is given above the bar.

Mol	Chain	Length	Quality of chain
1	A	211	<div> <div>9%</div> <div>86%</div> <div>12%</div> </div>
1	B	211	<div> <div>5%</div> <div>82%</div> <div>16%</div> </div>

The following table lists non-polymeric compounds, carbohydrate monomers and non-standard residues in protein, DNA, RNA chains that are outliers for geometric or electron-density-fit criteria:

Mol	Type	Chain	Res	Chirality	Geometry	Clashes	Electron density
5	BR	A	1218	-	-	X	-
5	BR	B	1214	-	-	X	-
5	BR	B	1215	-	-	X	-

2 Entry composition [i](#)

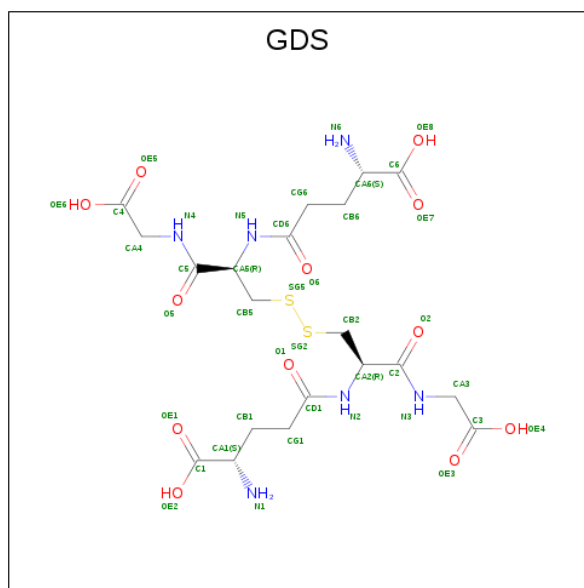
There are 6 unique types of molecules in this entry. The entry contains 4152 atoms, of which 0 are hydrogens and 0 are deuteriums.

In the tables below, the ZeroOcc column contains the number of atoms modelled with zero occupancy, the AltConf column contains the number of residues with at least one atom in alternate conformation and the Trace column contains the number of residues modelled with at most 2 atoms.

- Molecule 1 is a protein called GLUTATHIONE TRANSFERASE SIGMA CLASS.

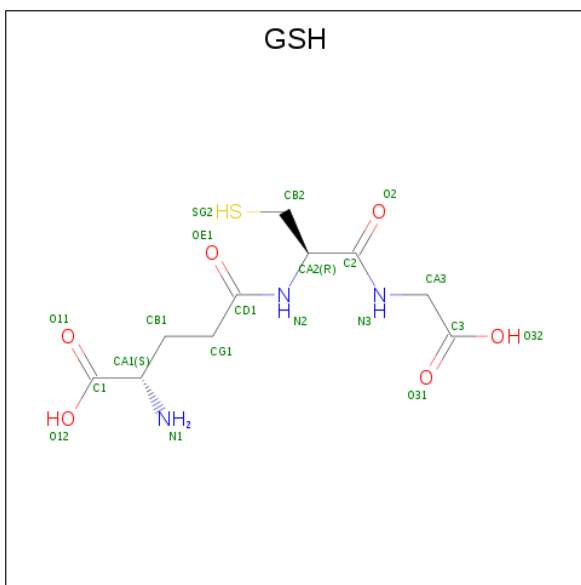
Mol	Chain	Residues	Atoms					ZeroOcc	AltConf	Trace
1	A	210	Total	C	N	O	S	0	8	0
			1750	1132	295	314	9			
1	B	210	Total	C	N	O	S	0	11	0
			1774	1143	299	322	10			

- Molecule 2 is OXIDIZED GLUTATHIONE DISULFIDE (three-letter code: GDS) (formula: $C_{20}H_{32}N_6O_{12}S_2$).



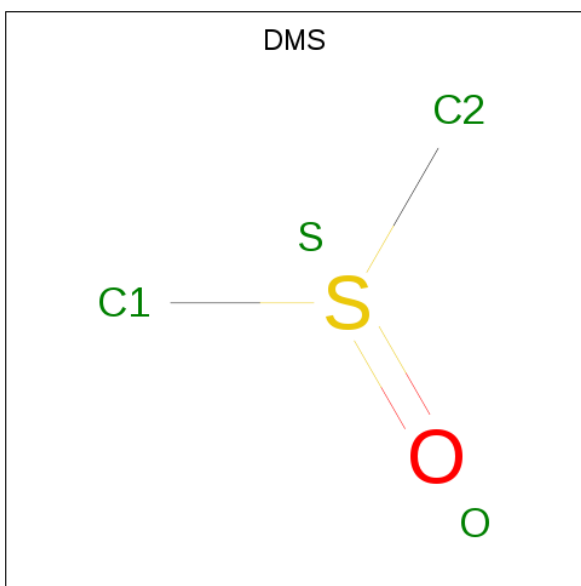
Mol	Chain	Residues	Atoms					ZeroOcc	AltConf
2	A	1	Total	C	N	O	S	0	1
			40	20	6	12	2		
2	B	1	Total	C	N	O	S	0	1
			40	20	6	12	2		

- Molecule 3 is GLUTATHIONE (three-letter code: GSH) (formula: $C_{10}H_{17}N_3O_6S$).



Mol	Chain	Residues	Atoms					ZeroOcc	AltConf
3	A	1	Total 20	C 10	N 3	O 6	S 1	0	1
3	B	1	Total 20	C 10	N 3	O 6	S 1	0	1

- Molecule 4 is DIMETHYL SULFOXIDE (three-letter code: DMS) (formula: $\text{C}_2\text{H}_6\text{OS}$).



Mol	Chain	Residues	Atoms				ZeroOcc	AltConf
4	A	1	Total 4	C 2	O 1	S 1	0	0
4	A	1	Total 4	C 2	O 1	S 1	0	0

Continued on next page...

Continued from previous page...

Mol	Chain	Residues	Atoms				ZeroOcc	AltConf
4	A	1	Total 4	C 2	O 1	S 1	0	0
4	B	1	Total 4	C 2	O 1	S 1	0	0
4	B	1	Total 4	C 2	O 1	S 1	0	0

- Molecule 5 is BROMIDE ION (three-letter code: BR) (formula: Br).

Mol	Chain	Residues	Atoms		ZeroOcc	AltConf
5	B	4	Total 4	Br 4	0	0
5	A	4	Total 4	Br 4	0	0

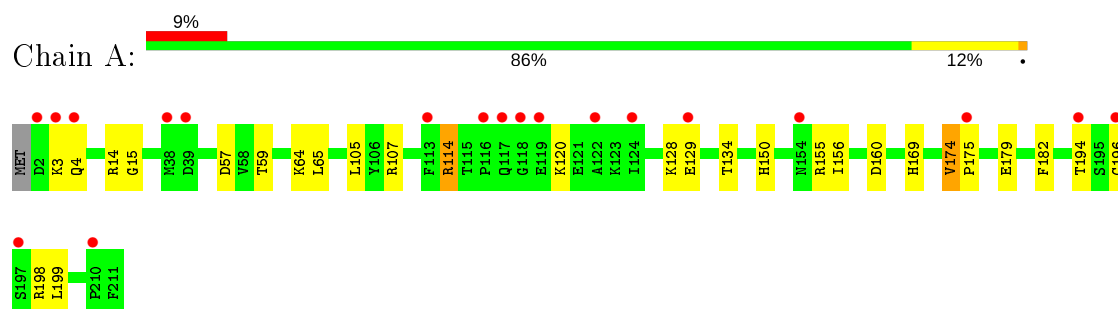
- Molecule 6 is water.

Mol	Chain	Residues	Atoms		ZeroOcc	AltConf
6	A	218	Total 218	O 218	0	0
6	B	262	Total 262	O 262	0	0

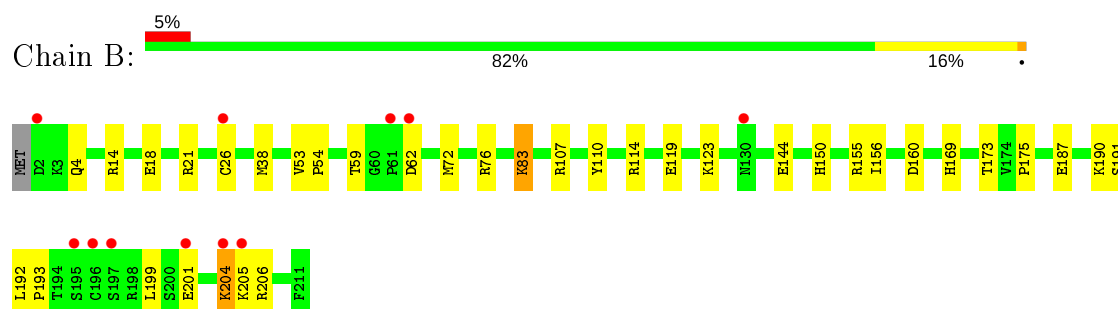
3 Residue-property plots [i](#)

These plots are drawn for all protein, RNA and DNA chains in the entry. The first graphic for a chain summarises the proportions of the various outlier classes displayed in the second graphic. The second graphic shows the sequence view annotated by issues in geometry and electron density. Residues are color-coded according to the number of geometric quality criteria for which they contain at least one outlier: green = 0, yellow = 1, orange = 2 and red = 3 or more. A red dot above a residue indicates a poor fit to the electron density ($RSRZ > 2$). Stretches of 2 or more consecutive residues without any outlier are shown as a green connector. Residues present in the sample, but not in the model, are shown in grey.

• Molecule 1: GLUTATHIONE TRANSFERASE SIGMA CLASS



• Molecule 1: GLUTATHIONE TRANSFERASE SIGMA CLASS



4 Data and refinement statistics

Property	Value	Source
Space group	P 21 21 21	Depositor
Cell constants a, b, c, α , β , γ	53.95Å 87.42Å 93.99Å 90.00° 90.00° 90.00°	Depositor
Resolution (Å)	64.42 – 1.62 19.84 – 1.60	Depositor EDS
% Data completeness (in resolution range)	96.2 (64.42-1.62) 94.1 (19.84-1.60)	Depositor EDS
R_{merge}	0.07	Depositor
R_{sym}	(Not available)	Depositor
$\langle I/\sigma(I) \rangle$ ¹	0.67 (at 1.60Å)	Xtriage
Refinement program	REFMAC 5.0	Depositor
R, R_{free}	0.191 , 0.224 0.203 , 0.227	Depositor DCC
R_{free} test set	2848 reflections (5.10%)	wwPDB-VP
Wilson B-factor (Å ²)	19.4	Xtriage
Anisotropy	0.574	Xtriage
Bulk solvent k_{sol} (e/Å ³), B_{sol} (Å ²)	0.33 , 49.0	EDS
L-test for twinning ²	$\langle L \rangle = 0.48$, $\langle L^2 \rangle = 0.32$	Xtriage
Estimated twinning fraction	No twinning to report.	Xtriage
F_o, F_c correlation	0.95	EDS
Total number of atoms	4152	wwPDB-VP
Average B, all atoms (Å ²)	22.0	wwPDB-VP

Xtriage's analysis on translational NCS is as follows: *The largest off-origin peak in the Patterson function is 5.53% of the height of the origin peak. No significant pseudotranslation is detected.*

¹Intensities estimated from amplitudes.

²Theoretical values of $\langle |L| \rangle$, $\langle L^2 \rangle$ for acentric reflections are 0.5, 0.333 respectively for untwinned datasets, and 0.375, 0.2 for perfectly twinned datasets.

5 Model quality [i](#)

5.1 Standard geometry [i](#)

Bond lengths and bond angles in the following residue types are not validated in this section: GSH, GDS, DMS, BR

The Z score for a bond length (or angle) is the number of standard deviations the observed value is removed from the expected value. A bond length (or angle) with $|Z| > 5$ is considered an outlier worth inspection. RMSZ is the root-mean-square of all Z scores of the bond lengths (or angles).

Mol	Chain	Bond lengths		Bond angles	
		RMSZ	$\# Z > 5$	RMSZ	$\# Z > 5$
1	A	0.71	1/1813 (0.1%)	0.68	0/2438
1	B	0.69	0/1841	0.69	0/2475
All	All	0.70	1/3654 (0.0%)	0.69	0/4913

All (1) bond length outliers are listed below:

Mol	Chain	Res	Type	Atoms	Z	Observed(Å)	Ideal(Å)
1	A	179	GLU	CB-CG	6.61	1.64	1.52

There are no bond angle outliers.

There are no chirality outliers.

There are no planarity outliers.

5.2 Too-close contacts [i](#)

In the following table, the Non-H and H(model) columns list the number of non-hydrogen atoms and hydrogen atoms in the chain respectively. The H(added) column lists the number of hydrogen atoms added and optimized by MolProbity. The Clashes column lists the number of clashes within the asymmetric unit, whereas Symm-Clashes lists symmetry related clashes.

Mol	Chain	Non-H	H(model)	H(added)	Clashes	Symm-Clashes
1	A	1750	0	1787	25	0
1	B	1774	0	1795	39	0
2	A	40	0	28	0	0
2	B	40	0	28	0	0
3	A	20	0	15	0	0
3	B	20	0	15	0	0
4	A	12	0	18	1	0
4	B	8	0	12	0	0

Continued on next page...

Continued from previous page...

Mol	Chain	Non-H	H(model)	H(added)	Clashes	Symm-Clashes
5	A	4	0	0	4	0
5	B	4	0	0	7	0
6	A	218	0	0	8	1
6	B	262	0	0	10	1
All	All	4152	0	3698	64	1

The all-atom clashscore is defined as the number of clashes found per 1000 atoms (including hydrogen atoms). The all-atom clashscore for this structure is 9.

All (64) close contacts within the same asymmetric unit are listed below, sorted by their clash magnitude.

Atom-1	Atom-2	Interatomic distance (Å)	Clash overlap (Å)
1:B:18[A]:GLU:OE1	5:B:1216:BR:BR	2.23	1.11
1:A:114:ARG:HG3	1:A:114:ARG:HH11	1.26	0.99
5:A:1215:BR:BR	5:A:1218:BR:BR	3.03	0.85
1:A:169:HIS:HE1	6:A:2022:HOH:O	1.59	0.83
1:B:173:THR:HG22	6:B:2071:HOH:O	1.80	0.81
1:A:198:ARG:HG3	6:A:2034:HOH:O	1.81	0.81
1:B:14:ARG:HG2	1:B:18[B]:GLU:HG3	1.65	0.77
1:B:169:HIS:HE1	6:B:2025:HOH:O	1.70	0.74
1:B:14:ARG:HA	1:B:18[B]:GLU:HG2	1.73	0.68
1:A:134[A]:THR:HG21	6:A:2143:HOH:O	1.94	0.67
1:A:3:LYS:HG2	1:A:4:GLN:H	1.61	0.66
1:B:83[A]:LYS:NZ	6:B:2129:HOH:O	2.28	0.66
1:B:62[A]:ASP:HB3	5:B:1215:BR:BR	2.51	0.65
1:B:14:ARG:CG	1:B:18[B]:GLU:HG3	2.27	0.65
1:B:144:GLU:HG2	6:B:2192:HOH:O	1.96	0.64
1:A:107:ARG:HG2	1:B:107[B]:ARG:HD2	1.79	0.64
1:B:14:ARG:CB	1:B:18[B]:GLU:HG3	2.28	0.63
1:B:107[A]:ARG:HG3	6:B:2149:HOH:O	1.98	0.62
1:B:150:HIS:HE1	6:B:2239:HOH:O	1.82	0.61
1:B:14:ARG:HG2	1:B:18[B]:GLU:CG	2.32	0.60
1:A:114:ARG:CG	1:A:114:ARG:HH11	2.08	0.58
1:A:175:PRO:HA	6:A:2178:HOH:O	2.04	0.56
1:A:114:ARG:HG3	1:A:114:ARG:NH1	2.06	0.54
1:B:38[A]:MET:HG3	5:B:1217:BR:BR	2.63	0.54
1:B:201:GLU:HG3	1:B:205:LYS:NZ	2.23	0.54
1:B:14:ARG:HB3	1:B:18[B]:GLU:HG3	1.90	0.54
1:B:156:ILE:HD12	1:B:192:LEU:HD11	1.90	0.53
1:A:120:LYS:HE3	6:A:2134:HOH:O	2.08	0.53
1:B:4:GLN:HG2	6:B:2005:HOH:O	2.09	0.53

Continued on next page...

Continued from previous page...

Atom-1	Atom-2	Interatomic distance (Å)	Clash overlap (Å)
1:A:169:HIS:HD2	6:A:2173:HOH:O	1.92	0.53
1:B:18[A]:GLU:HG3	5:B:1214:BR:BR	2.63	0.53
1:B:193:PRO:HA	1:B:199:LEU:HD23	1.90	0.52
1:A:14:ARG:HD2	5:A:1218:BR:BR	2.65	0.51
1:B:175:PRO:HA	6:B:2213:HOH:O	2.11	0.51
1:B:169:HIS:O	1:B:173:THR:HG23	2.12	0.49
1:A:4:GLN:HG3	1:A:59:THR:O	2.13	0.49
1:A:15:GLY:HA3	4:A:1214:DMS:O	2.13	0.49
1:A:107:ARG:NH1	6:A:2125:HOH:O	2.46	0.47
1:B:110:TYR:CE2	1:B:114:ARG:HD2	2.50	0.47
1:B:155:ARG:NH1	6:B:2210:HOH:O	2.48	0.47
1:B:150:HIS:HD2	1:B:160:ASP:OD2	1.98	0.47
1:A:128:LYS:HE3	1:A:174:VAL:HG12	1.96	0.47
1:A:156:ILE:HG21	1:A:196[B]:CYS:SG	2.55	0.46
1:B:83[A]:LYS:CG	1:B:155:ARG:HH22	2.28	0.46
1:A:182:PHE:HA	5:A:1216:BR:BR	2.72	0.45
1:B:206:ARG:HD2	5:B:1214:BR:BR	2.72	0.44
1:B:169:HIS:HD2	6:B:2216:HOH:O	2.00	0.44
1:A:150:HIS:HD2	1:A:160:ASP:OD2	2.01	0.43
1:B:26[A]:CYS:SG	1:B:156:ILE:HG21	2.58	0.43
1:B:72:MET:O	1:B:76:ARG:HG3	2.18	0.43
1:B:190:LYS:HB2	1:B:190:LYS:HE3	1.86	0.43
1:B:187:GLU:OE2	1:B:191[B]:SER:OG	2.37	0.43
1:A:107:ARG:HD2	1:A:107:ARG:HA	1.73	0.43
1:B:4:GLN:HA	1:B:59:THR:O	2.18	0.43
1:B:14:ARG:HA	1:B:18[B]:GLU:CG	2.46	0.42
1:B:53:VAL:HB	1:B:54:PRO:HA	2.01	0.42
1:A:57:ASP:HB3	1:A:65:LEU:HD11	2.01	0.42
1:A:3:LYS:CG	1:A:4:GLN:H	2.31	0.42
1:A:194:THR:HG23	6:A:2190:HOH:O	2.20	0.42
1:B:62[A]:ASP:CB	5:B:1215:BR:BR	3.17	0.42
1:A:169:HIS:CE1	5:A:1218:BR:BR	3.28	0.42
1:B:21:ARG:HD2	5:B:1214:BR:BR	2.76	0.41
1:B:204:LYS:HD3	1:B:204:LYS:O	2.20	0.40

All (1) symmetry-related close contacts are listed below. The label for Atom-2 includes the symmetry operator and encoded unit-cell translations to be applied.

Atom-1	Atom-2	Interatomic distance (Å)	Clash overlap (Å)
6:A:2183:HOH:O	6:B:2070:HOH:O[4_556]	2.17	0.03

5.3 Torsion angles

5.3.1 Protein backbone

In the following table, the Percentiles column shows the percent Ramachandran outliers of the chain as a percentile score with respect to all X-ray entries followed by that with respect to entries of similar resolution.

The Analysed column shows the number of residues for which the backbone conformation was analysed, and the total number of residues.

Mol	Chain	Analysed	Favoured	Allowed	Outliers	Percentiles	
1	A	215/211 (102%)	211 (98%)	4 (2%)	0	100	100
1	B	218/211 (103%)	215 (99%)	3 (1%)	0	100	100
All	All	433/422 (103%)	426 (98%)	7 (2%)	0	100	100

There are no Ramachandran outliers to report.

5.3.2 Protein sidechains

In the following table, the Percentiles column shows the percent sidechain outliers of the chain as a percentile score with respect to all X-ray entries followed by that with respect to entries of similar resolution.

The Analysed column shows the number of residues for which the sidechain conformation was analysed, and the total number of residues.

Mol	Chain	Analysed	Rotameric	Outliers	Percentiles	
1	A	194/188 (103%)	187 (96%)	7 (4%)	35	11
1	B	197/188 (105%)	192 (98%)	5 (2%)	47	21
All	All	391/376 (104%)	379 (97%)	12 (3%)	44	14

All (12) residues with a non-rotameric sidechain are listed below:

Mol	Chain	Res	Type
1	A	64[A]	LYS
1	A	64[B]	LYS
1	A	105	LEU
1	A	114	ARG
1	A	129	GLU
1	A	155	ARG
1	A	174	VAL
1	B	83[A]	LYS

Continued on next page...

Continued from previous page...

Mol	Chain	Res	Type
1	B	83[B]	LYS
1	B	119	GLU
1	B	123	LYS
1	B	204	LYS

Some sidechains can be flipped to improve hydrogen bonding and reduce clashes. All (6) such sidechains are listed below:

Mol	Chain	Res	Type
1	A	150	HIS
1	A	169	HIS
1	A	186	HIS
1	B	81	GLN
1	B	150	HIS
1	B	169	HIS

5.3.3 RNA [i](#)

There are no RNA molecules in this entry.

5.4 Non-standard residues in protein, DNA, RNA chains [i](#)

There are no non-standard protein/DNA/RNA residues in this entry.

5.5 Carbohydrates [i](#)

There are no carbohydrates in this entry.

5.6 Ligand geometry [i](#)

Of 17 ligands modelled in this entry, 8 are monoatomic - leaving 9 for Mogul analysis.

In the following table, the Counts columns list the number of bonds (or angles) for which Mogul statistics could be retrieved, the number of bonds (or angles) that are observed in the model and the number of bonds (or angles) that are defined in the Chemical Component Dictionary. The Link column lists molecule types, if any, to which the group is linked. The Z score for a bond length (or angle) is the number of standard deviations the observed value is removed from the expected value. A bond length (or angle) with $|Z| > 2$ is considered an outlier worth inspection. RMSZ is the root-mean-square of all Z scores of the bond lengths (or angles).

Mol	Type	Chain	Res	Link	Bond lengths			Bond angles		
					Counts	RMSZ	# Z > 2	Counts	RMSZ	# Z > 2
4	DMS	B	1213	-	3,3,3	2.63	1 (33%)	3,3,3	0.44	0
4	DMS	A	1212	-	3,3,3	2.53	1 (33%)	3,3,3	0.56	0
4	DMS	A	1214	-	3,3,3	2.55	1 (33%)	3,3,3	0.44	0
3	GSH	A	301[B]	-	12,19,19	0.82	1 (8%)	15,24,24	2.70	4 (26%)
4	DMS	A	1213	-	3,3,3	2.63	1 (33%)	3,3,3	0.45	0
2	GDS	A	300[A]	-	25,39,39	0.45	0	32,50,50	1.52	4 (12%)
4	DMS	B	1212	-	3,3,3	2.59	1 (33%)	3,3,3	0.32	0
3	GSH	B	301[B]	-	12,19,19	0.79	1 (8%)	15,24,24	2.16	3 (20%)
2	GDS	B	300[A]	-	25,39,39	0.53	0	32,50,50	1.39	4 (12%)

In the following table, the Chirals column lists the number of chiral outliers, the number of chiral centers analysed, the number of these observed in the model and the number defined in the Chemical Component Dictionary. Similar counts are reported in the Torsion and Rings columns. '-' means no outliers of that kind were identified.

Mol	Type	Chain	Res	Link	Chirals	Torsions	Rings
3	GSH	B	301[B]	-	-	1/18/24/24	-
3	GSH	A	301[B]	-	-	2/18/24/24	-
2	GDS	A	300[A]	-	-	4/39/51/51	-
2	GDS	B	300[A]	-	-	0/39/51/51	-

All (7) bond length outliers are listed below:

Mol	Chain	Res	Type	Atoms	Z	Observed(Å)	Ideal(Å)
4	A	1213	DMS	O-S	4.44	1.80	1.50
4	B	1213	DMS	O-S	4.42	1.80	1.50
4	B	1212	DMS	O-S	4.34	1.79	1.50
4	A	1214	DMS	O-S	4.25	1.79	1.50
4	A	1212	DMS	O-S	4.24	1.78	1.50
3	A	301[B]	GSH	CB2-SG2	-2.58	1.76	1.81
3	B	301[B]	GSH	CB2-SG2	-2.22	1.76	1.81

All (15) bond angle outliers are listed below:

Mol	Chain	Res	Type	Atoms	Z	Observed(°)	Ideal(°)
3	A	301[B]	GSH	CB2-CA2-N2	-9.47	97.78	111.28
2	A	300[A]	GDS	CA3-N3-C2	6.00	130.98	122.34
3	B	301[B]	GSH	CB2-CA2-N2	-5.79	103.03	111.28
2	B	300[A]	GDS	CA3-N3-C2	4.46	128.75	122.34

Continued on next page...

Continued from previous page...

Mol	Chain	Res	Type	Atoms	Z	Observed(°)	Ideal(°)
3	B	301[B]	GSH	C3-CA3-N3	3.56	117.30	110.43
2	B	300[A]	GDS	C4-CA4-N4	3.56	117.30	110.43
3	B	301[B]	GSH	CA2-CB2-SG2	-3.51	110.25	114.19
2	B	300[A]	GDS	CB2-SG2-SG5	2.74	110.91	103.82
2	A	300[A]	GDS	CB2-CA2-N2	-2.44	104.39	111.00
2	B	300[A]	GDS	CB5-CA5-N5	-2.44	104.40	111.00
3	A	301[B]	GSH	CB2-CA2-C2	-2.28	105.06	109.76
3	A	301[B]	GSH	C3-CA3-N3	2.25	114.77	110.43
2	A	300[A]	GDS	C4-CA4-N4	2.25	114.77	110.43
3	A	301[B]	GSH	CA2-CB2-SG2	-2.22	111.69	114.19
2	A	300[A]	GDS	O1-CD1-CG1	-2.15	118.08	122.02

There are no chirality outliers.

All (7) torsion outliers are listed below:

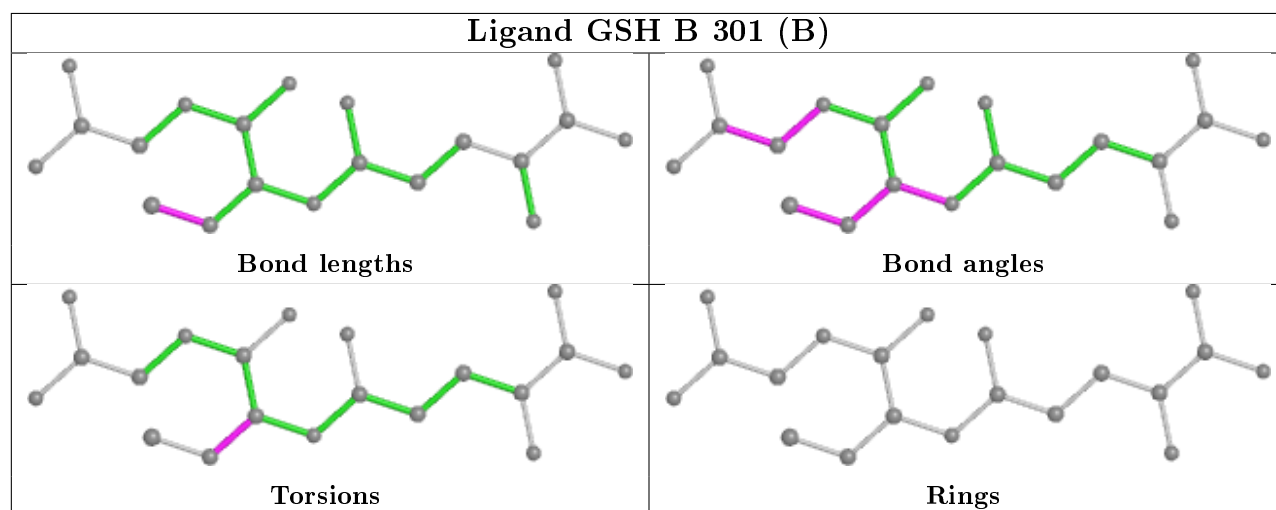
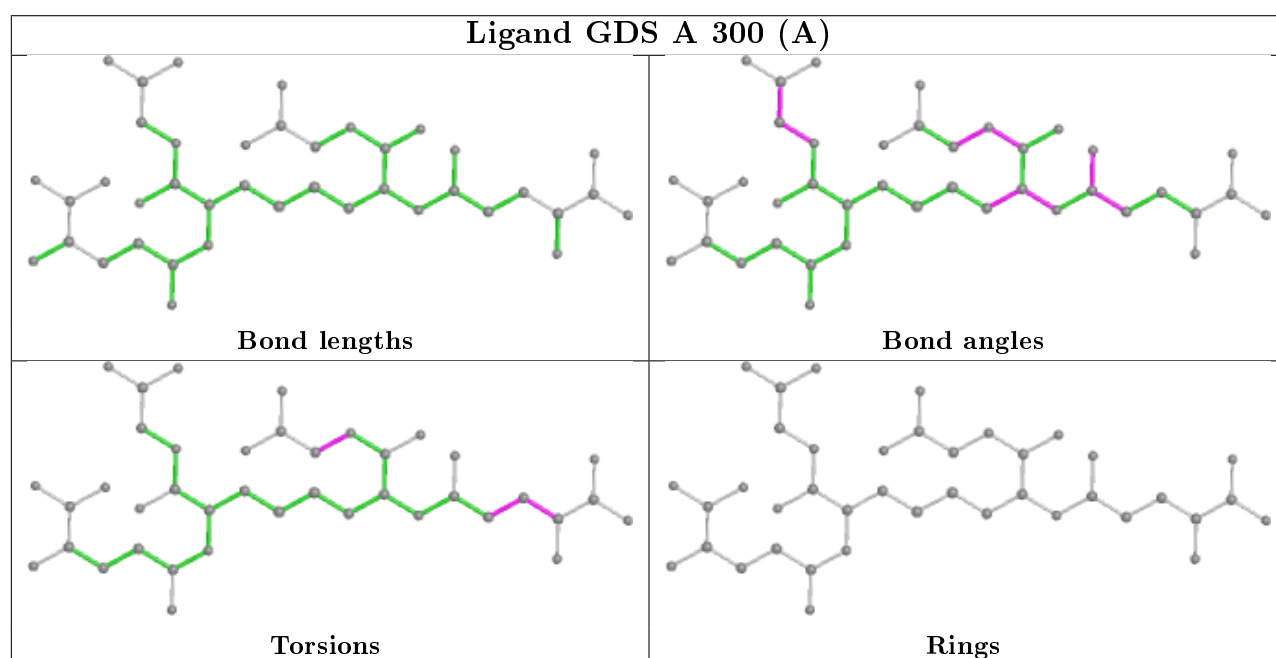
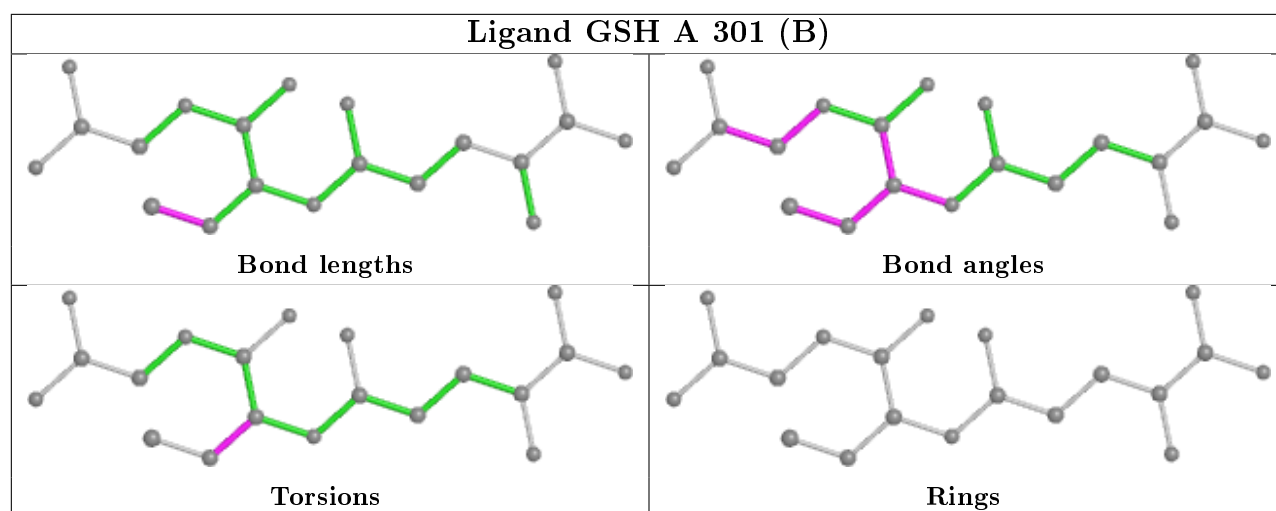
Mol	Chain	Res	Type	Atoms
2	A	300[A]	GDS	N1-CA1-CB1-CG1
2	A	300[A]	GDS	C1-CA1-CB1-CG1
2	A	300[A]	GDS	CA1-CB1-CG1-CD1
2	A	300[A]	GDS	C3-CA3-N3-C2
3	A	301[B]	GSH	N2-CA2-CB2-SG2
3	B	301[B]	GSH	N2-CA2-CB2-SG2
3	A	301[B]	GSH	C2-CA2-CB2-SG2

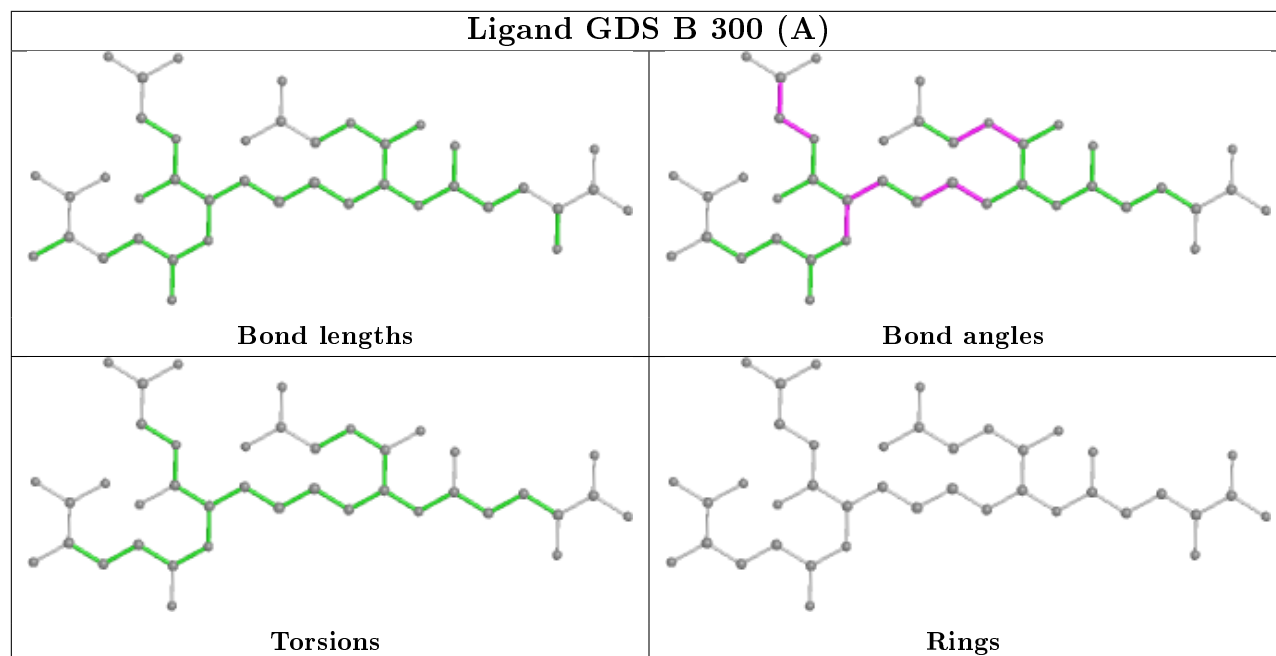
There are no ring outliers.

1 monomer is involved in 1 short contact:

Mol	Chain	Res	Type	Clashes	Symm-Clashes
4	A	1214	DMS	1	0

The following is a two-dimensional graphical depiction of Mogul quality analysis of bond lengths, bond angles, torsion angles, and ring geometry for all instances of the Ligand of Interest. In addition, ligands with molecular weight > 250 and outliers as shown on the validation Tables will also be included. For torsion angles, if less than 5% of the Mogul distribution of torsion angles is within 10 degrees of the torsion angle in question, then that torsion angle is considered an outlier. Any bond that is central to one or more torsion angles identified as an outlier by Mogul will be highlighted in the graph. For rings, the root-mean-square deviation (RMSD) between the ring in question and similar rings identified by Mogul is calculated over all ring torsion angles. If the average RMSD is greater than 60 degrees and the minimal RMSD between the ring in question and any Mogul-identified rings is also greater than 60 degrees, then that ring is considered an outlier. The outliers are highlighted in purple. The color gray indicates Mogul did not find sufficient equivalents in the CSD to analyse the geometry.





5.7 Other polymers [i](#)

There are no such residues in this entry.

5.8 Polymer linkage issues [i](#)

There are no chain breaks in this entry.

6 Fit of model and data

6.1 Protein, DNA and RNA chains

In the following table, the column labelled ‘#RSRZ> 2’ contains the number (and percentage) of RSRZ outliers, followed by percent RSRZ outliers for the chain as percentile scores relative to all X-ray entries and entries of similar resolution. The OWAB column contains the minimum, median, 95th percentile and maximum values of the occupancy-weighted average B-factor per residue. The column labelled ‘Q< 0.9’ lists the number of (and percentage) of residues with an average occupancy less than 0.9.

Mol	Chain	Analysed	<RSRZ>	#RSRZ>2	OWAB(Å ²)	Q<0.9
1	A	210/211 (99%)	0.69	19 (9%) 9 7	11, 19, 38, 75	0
1	B	210/211 (99%)	0.37	11 (5%) 27 24	10, 17, 41, 57	0
All	All	420/422 (99%)	0.53	30 (7%) 16 14	10, 18, 41, 75	0

All (30) RSRZ outliers are listed below:

Mol	Chain	Res	Type	RSRZ
1	A	2	ASP	7.8
1	B	197	SER	6.1
1	A	196[A]	CYS	4.9
1	B	62[A]	ASP	4.7
1	B	2	ASP	4.5
1	A	117	GLN	4.1
1	A	3	LYS	4.1
1	A	154	ASN	3.7
1	A	116	PRO	3.3
1	A	113	PHE	3.3
1	B	204	LYS	3.3
1	A	38	MET	3.2
1	A	119	GLU	3.1
1	A	39	ASP	3.1
1	B	201	GLU	3.1
1	B	61	PRO	3.1
1	B	195[A]	SER	3.0
1	A	118	GLY	2.8
1	A	210	PRO	2.8
1	A	124	ILE	2.7
1	A	4	GLN	2.7
1	A	175	PRO	2.6
1	B	130	ASN	2.5
1	B	196[A]	CYS	2.5

Continued on next page...

Continued from previous page...

Mol	Chain	Res	Type	RSRZ
1	A	194	THR	2.4
1	B	26[A]	CYS	2.3
1	A	129	GLU	2.2
1	A	197	SER	2.1
1	B	205	LYS	2.1
1	A	122	ALA	2.1

6.2 Non-standard residues in protein, DNA, RNA chains [i](#)

There are no non-standard protein/DNA/RNA residues in this entry.

6.3 Carbohydrates [i](#)

There are no carbohydrates in this entry.

6.4 Ligands [i](#)

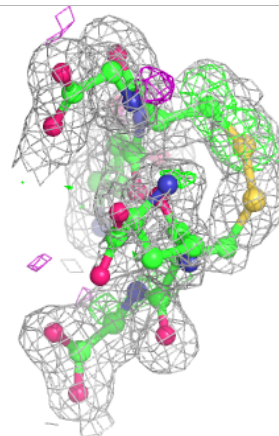
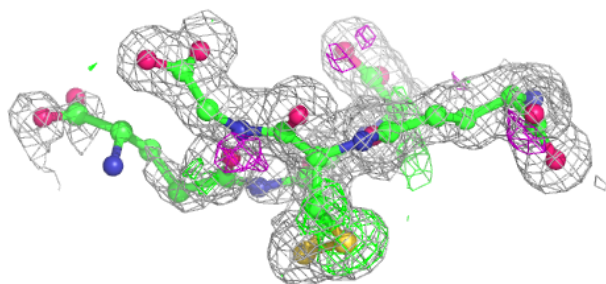
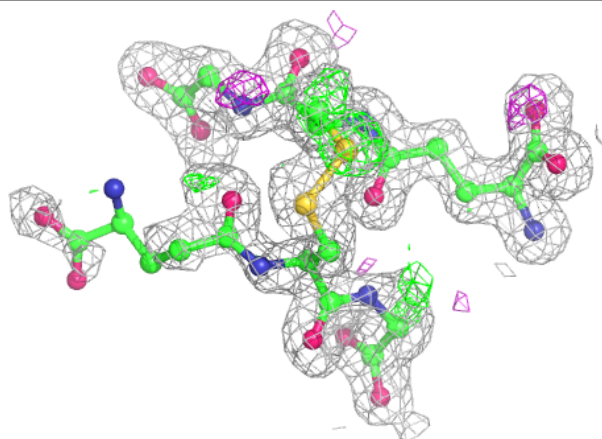
In the following table, the Atoms column lists the number of modelled atoms in the group and the number defined in the chemical component dictionary. The B-factors column lists the minimum, median, 95th percentile and maximum values of B factors of atoms in the group. The column labelled 'Q< 0.9' lists the number of atoms with occupancy less than 0.9.

Mol	Type	Chain	Res	Atoms	RSCC	RSR	B-factors(\AA^2)	Q<0.9
5	BR	A	1217	1/1	0.77	0.14	25,25,25,25	1
5	BR	B	1215	1/1	0.80	0.11	53,53,53,53	1
4	DMS	A	1213	4/4	0.81	0.17	60,61,62,63	0
2	GDS	A	300[A]	40/40	0.84	0.17	9,17,37,40	38
3	GSH	A	301[B]	20/20	0.86	0.13	9,14,25,37	20
5	BR	A	1215	1/1	0.89	0.10	15,15,15,15	1
2	GDS	B	300[A]	40/40	0.89	0.14	8,15,26,29	37
5	BR	A	1216	1/1	0.90	0.12	26,26,26,26	1
3	GSH	B	301[B]	20/20	0.90	0.11	9,15,26,37	20
4	DMS	A	1214	4/4	0.92	0.17	36,40,41,42	0
4	DMS	A	1212	4/4	0.92	0.12	33,33,37,38	0
5	BR	A	1218	1/1	0.93	0.08	35,35,35,35	1
4	DMS	B	1213	4/4	0.94	0.16	45,45,46,47	0
4	DMS	B	1212	4/4	0.94	0.11	40,43,44,46	0
5	BR	B	1217	1/1	0.98	0.03	28,28,28,28	1
5	BR	B	1214	1/1	0.99	0.08	19,19,19,19	1
5	BR	B	1216	1/1	0.99	0.15	16,16,16,16	1

The following is a graphical depiction of the model fit to experimental electron density of all instances of the Ligand of Interest. In addition, ligands with molecular weight > 250 and outliers as shown on the geometry validation Tables will also be included. Each fit is shown from different orientation to approximate a three-dimensional view.

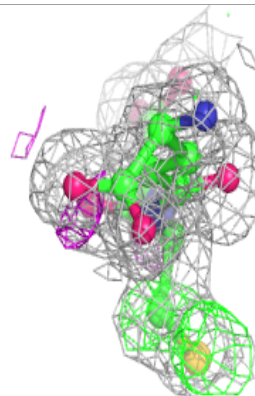
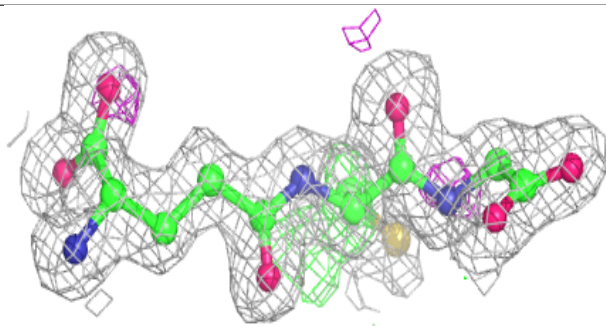
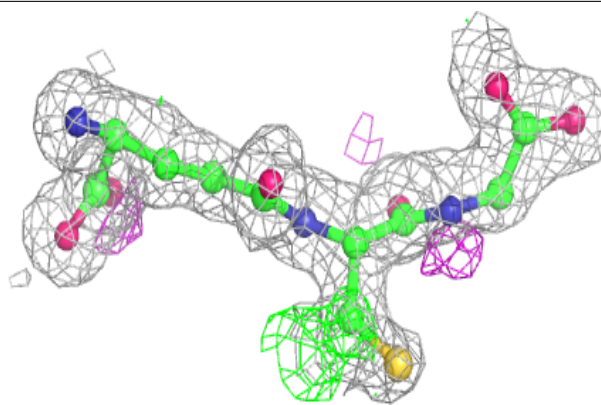
Electron density around GDS A 300 (A):

$2mF_o-DF_c$ (at 0.7 rmsd) in gray
 mF_o-DF_c (at 3 rmsd) in purple (negative)
and green (positive)



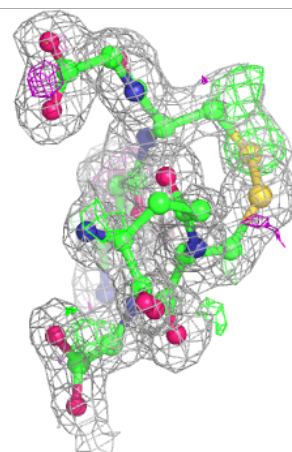
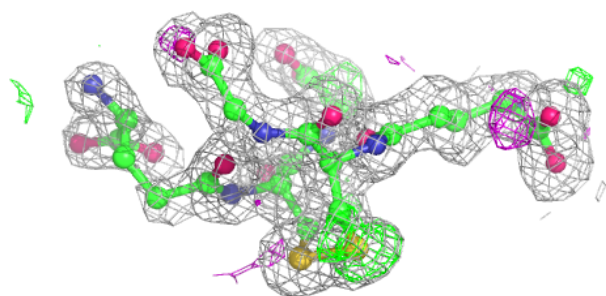
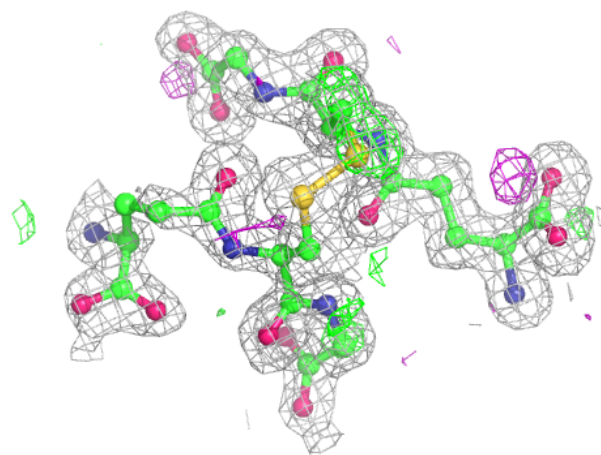
Electron density around GSH A 301 (B):

$2mF_o-DF_c$ (at 0.7 rmsd) in gray
 mF_o-DF_c (at 3 rmsd) in purple (negative)
and green (positive)



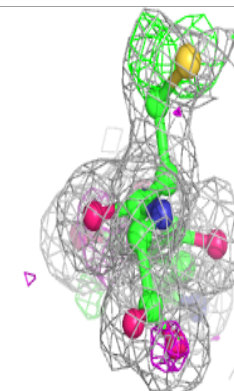
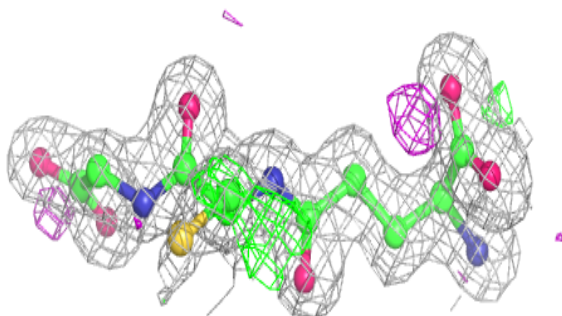
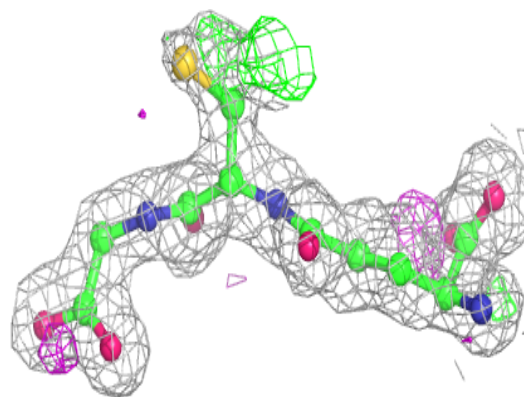
Electron density around GDS B 300 (A):

$2mF_o-DF_c$ (at 0.7 rmsd) in gray
 mF_o-DF_c (at 3 rmsd) in purple (negative)
and green (positive)



Electron density around GSH B 301 (B):

$2mF_o-DF_c$ (at 0.7 rmsd) in gray
 mF_o-DF_c (at 3 rmsd) in purple (negative)
and green (positive)



6.5 Other polymers [i](#)

There are no such residues in this entry.