



# wwPDB X-ray Structure Validation Summary Report ⓘ

May 3, 2021 – 10:17 pm BST

PDB ID : 2WHQ  
Title : Crystal structure of acetylcholinesterase, phosphorylated by sarin (aged) in complex with HI-6  
Authors : Ekstrom, F.; Hornberg, A.; Artursson, E.; Hammarstrom, L.G.; Schneider, G.; Pang, Y.P.  
Deposited on : 2009-05-06  
Resolution : 2.15 Å(reported)

This is a wwPDB X-ray Structure Validation Summary Report for a publicly released PDB entry.

We welcome your comments at [validation@mail.wwpdb.org](mailto:validation@mail.wwpdb.org)

A user guide is available at

<https://www.wwpdb.org/validation/2017/XrayValidationReportHelp>

with specific help available everywhere you see the ⓘ symbol.

---

The following versions of software and data (see [references ⓘ](#)) were used in the production of this report:

MolProbity : 4.02b-467  
Mogul : 1.8.5 (274361), CSD as541be (2020)  
Xtriage (Phenix) : 1.13  
EDS : 2.18  
buster-report : 1.1.7 (2018)  
Percentile statistics : 20191225.v01 (using entries in the PDB archive December 25th 2019)  
Refmac : 5.8.0158  
CCP4 : 7.0.044 (Gargrove)  
Ideal geometry (proteins) : Engh & Huber (2001)  
Ideal geometry (DNA, RNA) : Parkinson et al. (1996)  
Validation Pipeline (wwPDB-VP) : 2.18

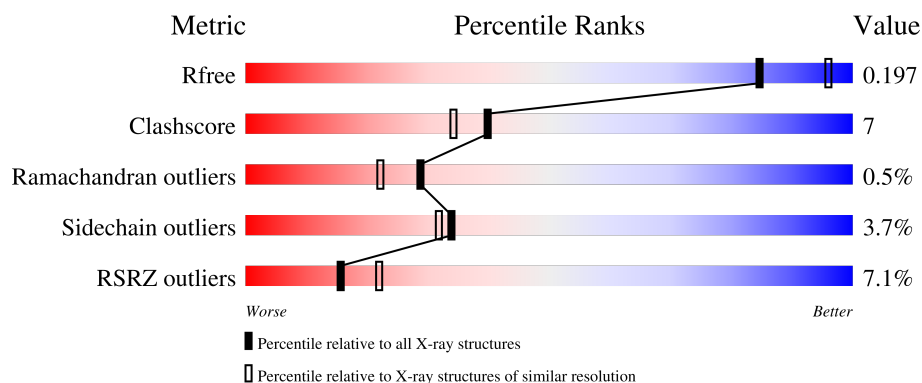
# 1 Overall quality at a glance

The following experimental techniques were used to determine the structure:

*X-RAY DIFFRACTION*

The reported resolution of this entry is 2.15 Å.

Percentile scores (ranging between 0-100) for global validation metrics of the entry are shown in the following graphic. The table shows the number of entries on which the scores are based.



Metric	Whole archive (#Entries)	Similar resolution (#Entries, resolution range(Å))
$R_{free}$	130704	1479 (2.16-2.16)
Clashscore	141614	1585 (2.16-2.16)
Ramachandran outliers	138981	1560 (2.16-2.16)
Sidechain outliers	138945	1559 (2.16-2.16)
RSRZ outliers	127900	1456 (2.16-2.16)

The table below summarises the geometric issues observed across the polymeric chains and their fit to the electron density. The red, orange, yellow and green segments of the lower bar indicate the fraction of residues that contain outliers for  $\geq 3$ , 2, 1 and 0 types of geometric quality criteria respectively. A grey segment represents the fraction of residues that are not modelled. The numeric value for each fraction is indicated below the corresponding segment, with a dot representing fractions  $\leq 5\%$ . The upper red bar (where present) indicates the fraction of residues that have poor fit to the electron density. The numeric value is given above the bar.

Mol	Chain	Length	Quality of chain
1	A	548	<div> <div>6%</div> <div>84%</div> <div>12%</div> <div>..</div> </div>
1	B	548	<div> <div>8%</div> <div>82%</div> <div>13%</div> <div>...</div> </div>

The following table lists non-polymeric compounds, carbohydrate monomers and non-standard residues in protein, DNA, RNA chains that are outliers for geometric or electron-density-fit criteria:

Mol	Type	Chain	Res	Chirality	Geometry	Clashes	Electron density
3	HI6	B	1545	-	-	X	-

## 2 Entry composition [i](#)

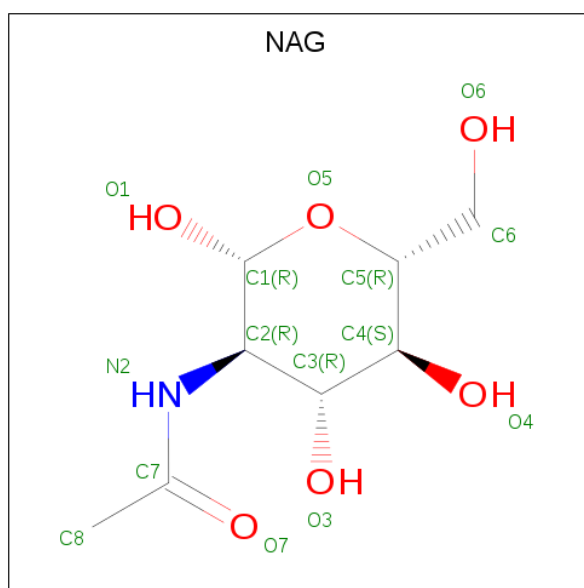
There are 7 unique types of molecules in this entry. The entry contains 9136 atoms, of which 0 are hydrogens and 0 are deuteriums.

In the tables below, the ZeroOcc column contains the number of atoms modelled with zero occupancy, the AltConf column contains the number of residues with at least one atom in alternate conformation and the Trace column contains the number of residues modelled with at most 2 atoms.

- Molecule 1 is a protein called ACETYLCHOLINESTERASE.

Mol	Chain	Residues	Atoms						ZeroOcc	AltConf	Trace
1	A	535	Total	C	N	O	P	S	0	2	0
			4186	2683	725	763	1	14			
1	B	534	Total	C	N	O	P	S	0	2	1
			4168	2674	720	759	1	14			

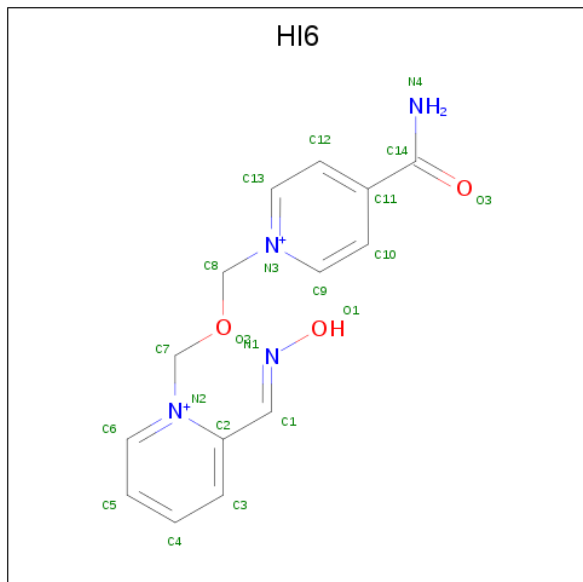
- Molecule 2 is 2-acetamido-2-deoxy-beta-D-glucopyranose (three-letter code: NAG) (formula:  $C_8H_{15}NO_6$ ).



Mol	Chain	Residues	Atoms				ZeroOcc	AltConf
2	A	1	Total	C	N	O	0	0
			14	8	1	5		
2	A	1	Total	C	N	O	0	0
			14	8	1	5		
2	B	1	Total	C	N	O	0	0
			14	8	1	5		

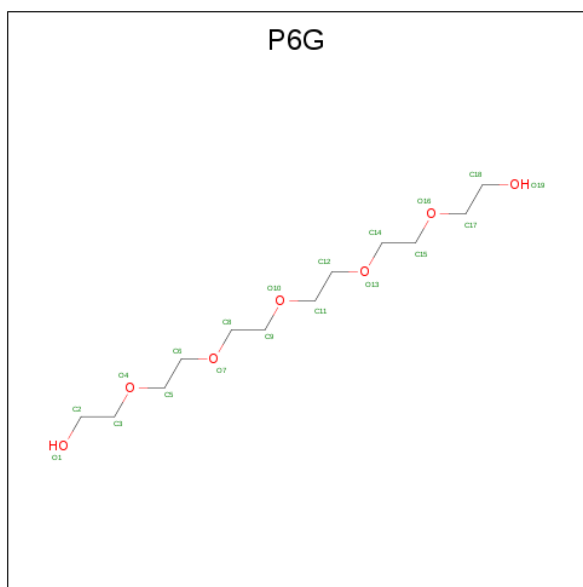
- Molecule 3 is 4-(AMINOCARBONYL)-1-[(2-[(E)-(HYDROXYIMINO)METHYL]PYR

IDINIUM-1-YL}METHOXY)METHYL]PYRIDINIUM (three-letter code: HI6) (formula:  $C_{14}H_{16}N_4O_3$ ).



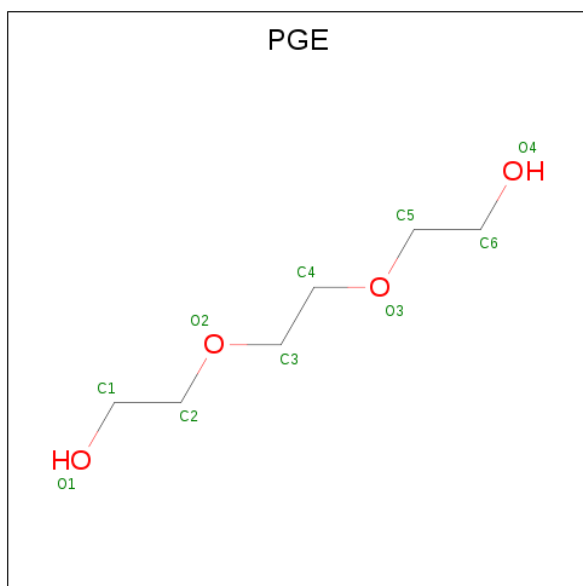
Mol	Chain	Residues	Atoms				ZeroOcc	AltConf
3	A	1	Total	C	N	O	0	0
			12	8	2	2		
3	B	1	Total	C	N	O	0	0
			12	8	2	2		

- Molecule 4 is HEXAETHYLENE GLYCOL (three-letter code: P6G) (formula:  $C_{12}H_{26}O_7$ ).



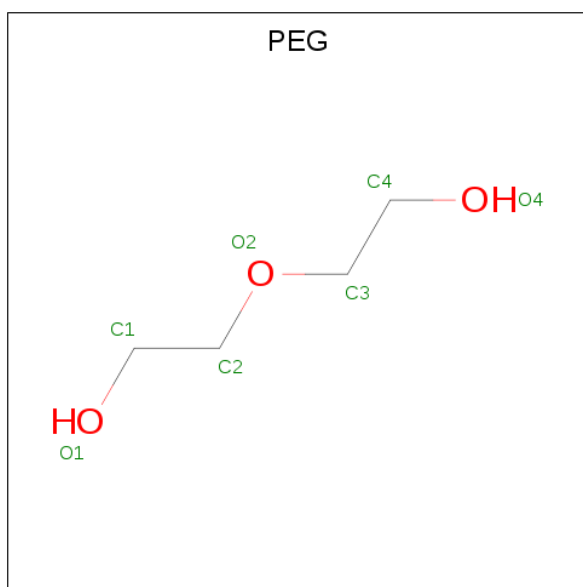
Mol	Chain	Residues	Atoms			ZeroOcc	AltConf
4	A	1	Total	C	O	0	0
			19	12	7		

- Molecule 5 is TRIETHYLENE GLYCOL (three-letter code: PGE) (formula:  $C_6H_{14}O_4$ ).



Mol	Chain	Residues	Atoms			ZeroOcc	AltConf
5	A	1	Total	C	O	0	0
			10	6	4		
5	B	1	Total	C	O	0	0
			10	6	4		
5	B	1	Total	C	O	0	0
			10	6	4		
5	B	1	Total	C	O	0	0
			10	6	4		

- Molecule 6 is DI(HYDROXYETHYL)ETHER (three-letter code: PEG) (formula:  $C_4H_{10}O_3$ ).



Mol	Chain	Residues	Atoms			ZeroOcc	AltConf
6	B	1	Total	C	O	0	0
			7	4	3		

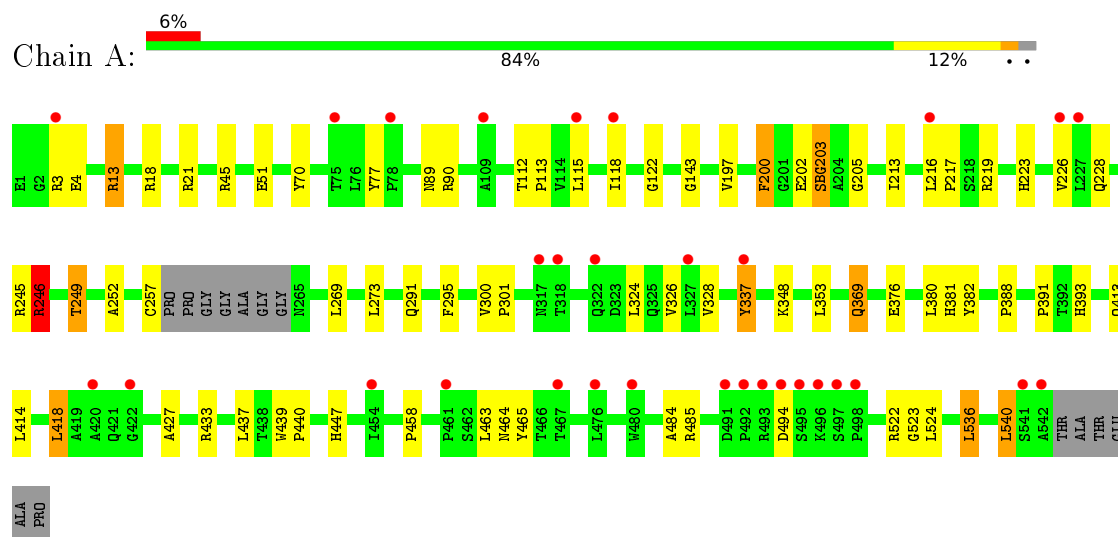
- Molecule 7 is water.

Mol	Chain	Residues	Atoms		ZeroOcc	AltConf
7	A	364	Total	O	0	0
			364	364		
7	B	286	Total	O	0	0
			286	286		

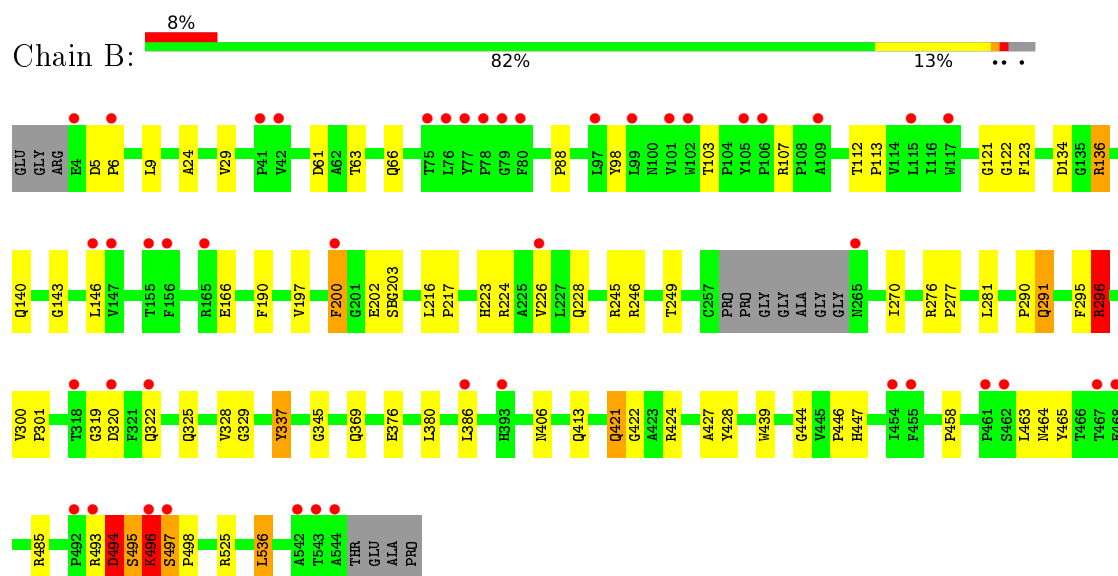
### 3 Residue-property plots [i](#)

These plots are drawn for all protein, RNA, DNA and oligosaccharide chains in the entry. The first graphic for a chain summarises the proportions of the various outlier classes displayed in the second graphic. The second graphic shows the sequence view annotated by issues in geometry and electron density. Residues are color-coded according to the number of geometric quality criteria for which they contain at least one outlier: green = 0, yellow = 1, orange = 2 and red = 3 or more. A red dot above a residue indicates a poor fit to the electron density ( $RSRZ > 2$ ). Stretches of 2 or more consecutive residues without any outlier are shown as a green connector. Residues present in the sample, but not in the model, are shown in grey.

#### • Molecule 1: ACETYLCHOLINESTERASE



#### • Molecule 1: ACETYLCHOLINESTERASE



## 4 Data and refinement statistics

Property	Value	Source
Space group	P 21 21 21	Depositor
Cell constants a, b, c, $\alpha$ , $\beta$ , $\gamma$	79.55Å 112.32Å 227.06Å 90.00° 90.00° 90.00°	Depositor
Resolution (Å)	29.09 – 2.15 29.19 – 2.15	Depositor EDS
% Data completeness (in resolution range)	99.6 (29.09-2.15) 99.6 (29.19-2.15)	Depositor EDS
$R_{merge}$	0.06	Depositor
$R_{sym}$	(Not available)	Depositor
$\langle I/\sigma(I) \rangle$ <sup>1</sup>	3.75 (at 2.16Å)	Xtriage
Refinement program	PHENIX (PHENIX.REFINE)	Depositor
R, $R_{free}$	0.185 , 0.212 0.170 , 0.197	Depositor DCC
$R_{free}$ test set	2191 reflections (1.98%)	wwPDB-VP
Wilson B-factor (Å <sup>2</sup> )	45.8	Xtriage
Anisotropy	0.060	Xtriage
Bulk solvent $k_{sol}$ (e/Å <sup>3</sup> ), $B_{sol}$ (Å <sup>2</sup> )	0.34 , 49.5	EDS
L-test for twinning <sup>2</sup>	$\langle  L  \rangle = 0.49$ , $\langle L^2 \rangle = 0.32$	Xtriage
Estimated twinning fraction	No twinning to report.	Xtriage
$F_o, F_c$ correlation	0.97	EDS
Total number of atoms	9136	wwPDB-VP
Average B, all atoms (Å <sup>2</sup> )	47.0	wwPDB-VP

Xtriage's analysis on translational NCS is as follows: *The largest off-origin peak in the Patterson function is 2.93% of the height of the origin peak. No significant pseudotranslation is detected.*

<sup>1</sup>Intensities estimated from amplitudes.

<sup>2</sup>Theoretical values of  $\langle |L| \rangle$ ,  $\langle L^2 \rangle$  for acentric reflections are 0.5, 0.333 respectively for untwinned datasets, and 0.375, 0.2 for perfectly twinned datasets.

## 5 Model quality [i](#)

### 5.1 Standard geometry [i](#)

Bond lengths and bond angles in the following residue types are not validated in this section: SBG, PEG, P6G, NAG, PGE, HI6

The Z score for a bond length (or angle) is the number of standard deviations the observed value is removed from the expected value. A bond length (or angle) with  $|Z| > 5$  is considered an outlier worth inspection. RMSZ is the root-mean-square of all Z scores of the bond lengths (or angles).

Mol	Chain	Bond lengths		Bond angles	
		RMSZ	$\# Z  > 5$	RMSZ	$\# Z  > 5$
1	A	0.51	0/4300	0.63	1/5873 (0.0%)
1	B	0.46	0/4279	0.60	2/5847 (0.0%)
All	All	0.49	0/8579	0.61	3/11720 (0.0%)

There are no bond length outliers.

All (3) bond angle outliers are listed below:

Mol	Chain	Res	Type	Atoms	Z	Observed(°)	Ideal(°)
1	B	296	ARG	NE-CZ-NH1	5.96	123.28	120.30
1	B	296	ARG	NE-CZ-NH2	-5.87	117.36	120.30
1	A	246	ARG	NE-CZ-NH2	-5.37	117.61	120.30

There are no chirality outliers.

There are no planarity outliers.

### 5.2 Too-close contacts [i](#)

In the following table, the Non-H and H(model) columns list the number of non-hydrogen atoms and hydrogen atoms in the chain respectively. The H(added) column lists the number of hydrogen atoms added and optimized by MolProbity. The Clashes column lists the number of clashes within the asymmetric unit, whereas Symm-Clashes lists symmetry-related clashes.

Mol	Chain	Non-H	H(model)	H(added)	Clashes	Symm-Clashes
1	A	4186	0	4067	57	0
1	B	4168	0	4047	61	0
2	A	28	0	26	0	0
2	B	14	0	13	1	0
3	A	12	0	8	4	0
3	B	12	0	8	10	0

*Continued on next page...*

*Continued from previous page...*

Mol	Chain	Non-H	H(model)	H(added)	Clashes	Symm-Clashes
4	A	19	0	24	4	0
5	A	10	0	14	2	0
5	B	30	0	42	0	0
6	B	7	0	10	0	0
7	A	364	0	0	7	0
7	B	286	0	0	6	0
All	All	9136	0	8259	122	0

The all-atom clashscore is defined as the number of clashes found per 1000 atoms (including hydrogen atoms). The all-atom clashscore for this structure is 7.

The worst 5 of 122 close contacts within the same asymmetric unit are listed below, sorted by their clash magnitude.

Atom-1	Atom-2	Interatomic distance (Å)	Clash overlap (Å)
1:B:497:SER:HB2	1:B:498:PRO:HA	1.17	1.09
1:B:337[B]:TYR:CZ	3:B:1545:HI6:H1	1.92	1.04
1:B:497:SER:HB2	1:B:498:PRO:CA	1.96	0.95
1:A:197:VAL:H	1:A:223:HIS:HD2	1.16	0.90
1:A:4:GLU:OE2	1:A:18:ARG:HD3	1.76	0.86

There are no symmetry-related clashes.

## 5.3 Torsion angles [i](#)

### 5.3.1 Protein backbone [i](#)

In the following table, the Percentiles column shows the percent Ramachandran outliers of the chain as a percentile score with respect to all X-ray entries followed by that with respect to entries of similar resolution.

The Analysed column shows the number of residues for which the backbone conformation was analysed, and the total number of residues.

Mol	Chain	Analysed	Favoured	Allowed	Outliers	Percentiles	
1	A	532/548 (97%)	516 (97%)	15 (3%)	1 (0%)	47	46
1	B	531/548 (97%)	514 (97%)	13 (2%)	4 (1%)	19	12
All	All	1063/1096 (97%)	1030 (97%)	28 (3%)	5 (0%)	29	22

All (5) Ramachandran outliers are listed below:

Mol	Chain	Res	Type
1	B	494	ASP
1	B	497	SER
1	B	495	SER
1	B	496	LYS
1	A	494	ASP

### 5.3.2 Protein sidechains ⓘ

In the following table, the Percentiles column shows the percent sidechain outliers of the chain as a percentile score with respect to all X-ray entries followed by that with respect to entries of similar resolution.

The Analysed column shows the number of residues for which the sidechain conformation was analysed, and the total number of residues.

Mol	Chain	Analysed	Rotameric	Outliers	Percentiles	
1	A	438/445 (98%)	421 (96%)	17 (4%)	32	30
1	B	436/445 (98%)	419 (96%)	17 (4%)	32	30
All	All	874/890 (98%)	840 (96%)	34 (4%)	34	30

5 of 34 residues with a non-rotameric sidechain are listed below:

Mol	Chain	Res	Type
1	B	337[B]	TYR
1	B	421	GLN
1	B	525	ARG
1	A	388	PRO
1	A	369	GLN

Sometimes sidechains can be flipped to improve hydrogen bonding and reduce clashes. 5 of 9 such sidechains are listed below:

Mol	Chain	Res	Type
1	B	291	GLN
1	B	413	GLN
1	A	369	GLN
1	A	393	HIS
1	A	413	GLN

### 5.3.3 RNA ⓘ

There are no RNA molecules in this entry.

## 5.4 Non-standard residues in protein, DNA, RNA chains ⓘ

2 non-standard protein/DNA/RNA residues are modelled in this entry.

In the following table, the Counts columns list the number of bonds (or angles) for which Mogul statistics could be retrieved, the number of bonds (or angles) that are observed in the model and the number of bonds (or angles) that are defined in the Chemical Component Dictionary. The Link column lists molecule types, if any, to which the group is linked. The Z score for a bond length (or angle) is the number of standard deviations the observed value is removed from the expected value. A bond length (or angle) with  $|Z| > 2$  is considered an outlier worth inspection. RMSZ is the root-mean-square of all Z scores of the bond lengths (or angles).

Mol	Type	Chain	Res	Link	Bond lengths			Bond angles		
					Counts	RMSZ	$\# Z  > 2$	Counts	RMSZ	$\# Z  > 2$
1	SBG	A	203	1	8,9,10	1.58	3 (37%)	5,12,14	2.41	1 (20%)
1	SBG	B	203	1	8,9,10	1.60	3 (37%)	5,12,14	2.52	1 (20%)

In the following table, the Chirals column lists the number of chiral outliers, the number of chiral centers analysed, the number of these observed in the model and the number defined in the Chemical Component Dictionary. Similar counts are reported in the Torsion and Rings columns. '-' means no outliers of that kind were identified.

Mol	Type	Chain	Res	Link	Chirals	Torsions	Rings
1	SBG	A	203	1	-	1/5/8/10	-
1	SBG	B	203	1	-	1/5/8/10	-

The worst 5 of 6 bond length outliers are listed below:

Mol	Chain	Res	Type	Atoms	Z	Observed(Å)	Ideal(Å)
1	A	203	SBG	P1-OG	3.19	1.62	1.57
1	B	203	SBG	P1-OG	3.11	1.62	1.57
1	B	203	SBG	P1-O1	-2.20	1.50	1.54
1	B	203	SBG	P1-C1	2.13	1.82	1.77
1	A	203	SBG	P1-O1	-2.09	1.50	1.54

All (2) bond angle outliers are listed below:

Mol	Chain	Res	Type	Atoms	Z	Observed(°)	Ideal(°)
1	B	203	SBG	O1-P1-O2	4.75	123.14	111.58
1	A	203	SBG	O1-P1-O2	4.11	121.60	111.58

There are no chirality outliers.

All (2) torsion outliers are listed below:

Mol	Chain	Res	Type	Atoms
1	A	203	SBG	N-CA-CB-OG
1	B	203	SBG	N-CA-CB-OG

There are no ring outliers.

1 monomer is involved in 1 short contact:

Mol	Chain	Res	Type	Clashes	Symm-Clashes
1	A	203	SBG	1	0

## 5.5 Carbohydrates [i](#)

There are no monosaccharides in this entry.

## 5.6 Ligand geometry [i](#)

11 ligands are modelled in this entry.

In the following table, the Counts columns list the number of bonds (or angles) for which Mogul statistics could be retrieved, the number of bonds (or angles) that are observed in the model and the number of bonds (or angles) that are defined in the Chemical Component Dictionary. The Link column lists molecule types, if any, to which the group is linked. The Z score for a bond length (or angle) is the number of standard deviations the observed value is removed from the expected value. A bond length (or angle) with  $|Z| > 2$  is considered an outlier worth inspection. RMSZ is the root-mean-square of all Z scores of the bond lengths (or angles).

Mol	Type	Chain	Res	Link	Bond lengths			Bond angles		
					Counts	RMSZ	$\# Z  > 2$	Counts	RMSZ	$\# Z  > 2$
5	PGE	A	1545	-	9,9,9	0.48	0	8,8,8	0.37	0
5	PGE	B	1547	-	9,9,9	0.55	0	8,8,8	0.36	0
2	NAG	A	601	1	14,14,15	0.46	0	17,19,21	1.47	2 (11%)
6	PEG	B	1546	-	6,6,6	0.42	0	5,5,5	0.43	0
3	HI6	A	1543	-	11,12,22	1.27	1 (9%)	9,14,28	1.78	2 (22%)
2	NAG	A	701	1	14,14,15	0.49	0	17,19,21	0.96	1 (5%)
3	HI6	B	1545	-	11,12,22	0.98	1 (9%)	9,14,28	2.65	4 (44%)
4	P6G	A	1544	-	18,18,18	1.74	5 (27%)	17,17,17	2.09	9 (52%)
5	PGE	B	1548	-	9,9,9	0.45	0	8,8,8	0.50	0
5	PGE	B	1549	-	9,9,9	0.47	0	8,8,8	0.44	0
2	NAG	B	601	1	14,14,15	0.51	0	17,19,21	1.14	1 (5%)

In the following table, the Chirals column lists the number of chiral outliers, the number of chiral centers analysed, the number of these observed in the model and the number defined in the

Chemical Component Dictionary. Similar counts are reported in the Torsion and Rings columns.  
'-' means no outliers of that kind were identified.

Mol	Type	Chain	Res	Link	Chirals	Torsions	Rings
5	PGE	A	1545	-	-	6/7/7/7	-
5	PGE	B	1547	-	-	3/7/7/7	-
2	NAG	A	601	1	-	4/6/23/26	0/1/1/1
6	PEG	B	1546	-	-	4/4/4/4	-
3	HI6	A	1543	-	-	2/5/6/13	0/1/1/2
2	NAG	A	701	1	-	0/6/23/26	0/1/1/1
3	HI6	B	1545	-	-	1/5/6/13	0/1/1/2
4	P6G	A	1544	-	-	6/16/16/16	-
5	PGE	B	1548	-	-	4/7/7/7	-
5	PGE	B	1549	-	-	4/7/7/7	-
2	NAG	B	601	1	-	3/6/23/26	0/1/1/1

The worst 5 of 7 bond length outliers are listed below:

Mol	Chain	Res	Type	Atoms	Z	Observed(Å)	Ideal(Å)
3	A	1543	HI6	C2-N2	-3.67	1.33	1.37
4	A	1544	P6G	C17-C18	-2.92	1.34	1.49
4	A	1544	P6G	C9-C8	-2.89	1.34	1.49
4	A	1544	P6G	C3-C2	-2.86	1.34	1.49
4	A	1544	P6G	C6-C5	-2.83	1.34	1.49

The worst 5 of 19 bond angle outliers are listed below:

Mol	Chain	Res	Type	Atoms	Z	Observed(°)	Ideal(°)
2	A	601	NAG	C1-O5-C5	4.66	118.50	112.19
3	B	1545	HI6	C3-C2-N2	4.57	123.12	117.52
3	B	1545	HI6	O1-N1-C1	4.47	119.75	111.86
3	A	1543	HI6	C3-C2-N2	3.75	122.12	117.52
2	B	601	NAG	C1-O5-C5	3.72	117.24	112.19

There are no chirality outliers.

5 of 37 torsion outliers are listed below:

Mol	Chain	Res	Type	Atoms
2	B	601	NAG	C3-C2-N2-C7
2	B	601	NAG	C8-C7-N2-C2
2	B	601	NAG	O7-C7-N2-C2
3	A	1543	HI6	O2-C7-N2-C6

*Continued on next page...*

*Continued from previous page...*

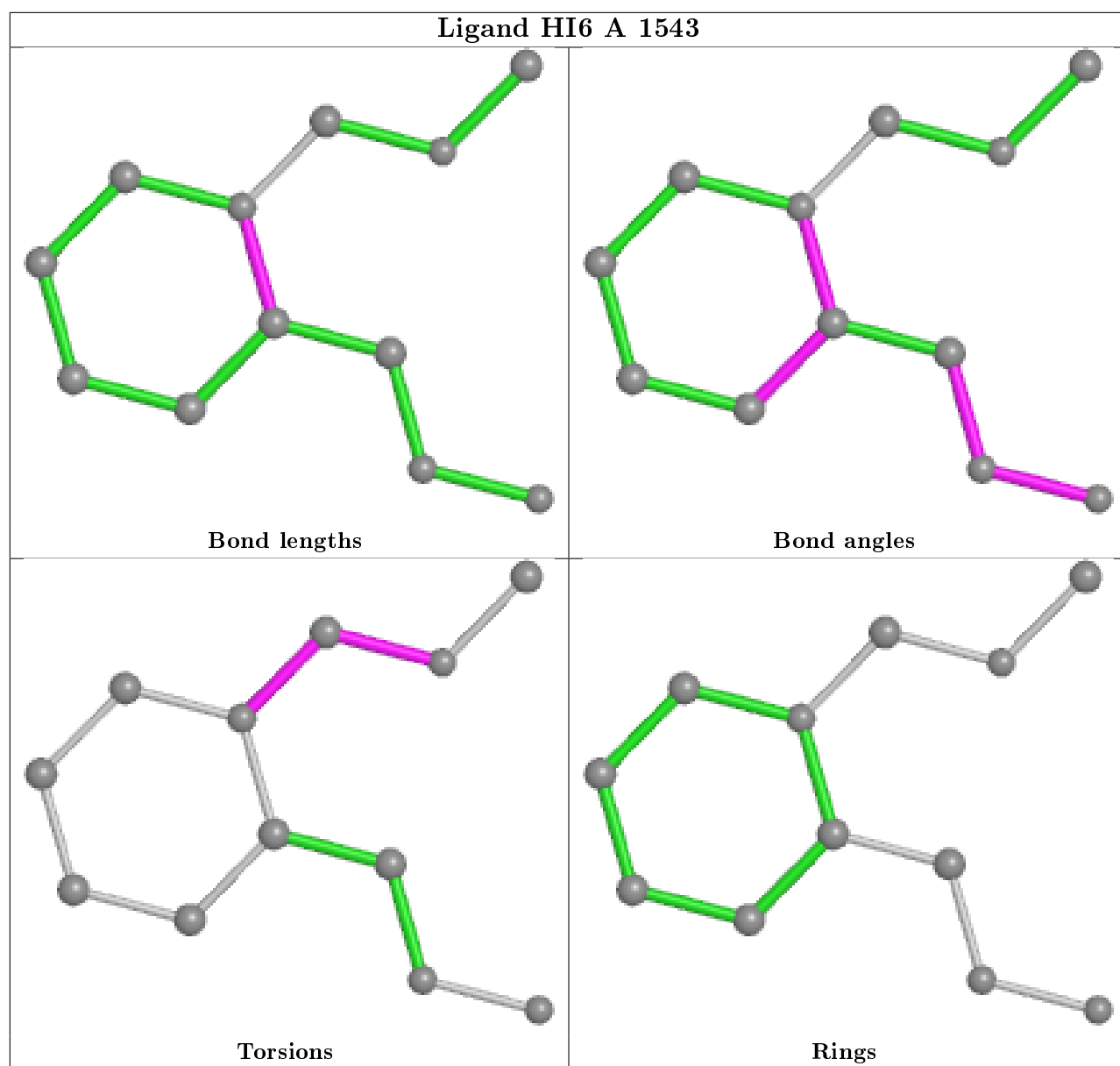
Mol	Chain	Res	Type	Atoms
3	B	1545	HI6	N2-C7-O2-C8

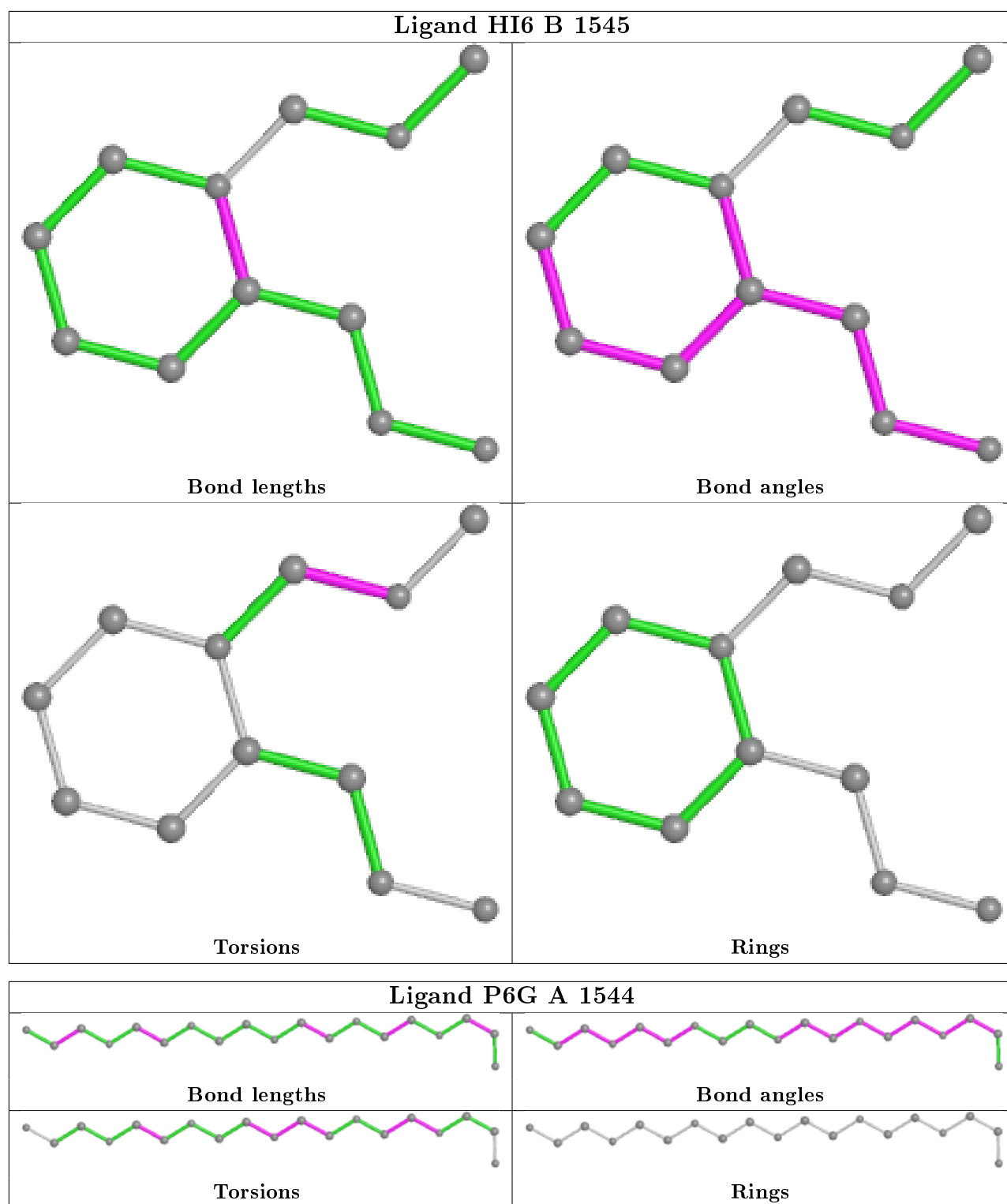
There are no ring outliers.

5 monomers are involved in 21 short contacts:

Mol	Chain	Res	Type	Clashes	Symm-Clashes
5	A	1545	PGE	2	0
3	A	1543	HI6	4	0
3	B	1545	HI6	10	0
4	A	1544	P6G	4	0
2	B	601	NAG	1	0

The following is a two-dimensional graphical depiction of Mogul quality analysis of bond lengths, bond angles, torsion angles, and ring geometry for all instances of the Ligand of Interest. In addition, ligands with molecular weight > 250 and outliers as shown on the validation Tables will also be included. For torsion angles, if less than 5% of the Mogul distribution of torsion angles is within 10 degrees of the torsion angle in question, then that torsion angle is considered an outlier. Any bond that is central to one or more torsion angles identified as an outlier by Mogul will be highlighted in the graph. For rings, the root-mean-square deviation (RMSD) between the ring in question and similar rings identified by Mogul is calculated over all ring torsion angles. If the average RMSD is greater than 60 degrees and the minimal RMSD between the ring in question and any Mogul-identified rings is also greater than 60 degrees, then that ring is considered an outlier. The outliers are highlighted in purple. The color gray indicates Mogul did not find sufficient equivalents in the CSD to analyse the geometry.





## 5.7 Other polymers [i](#)

There are no such residues in this entry.

## 5.8 Polymer linkage issues ⓘ

There are no chain breaks in this entry.

## 6 Fit of model and data [i](#)

### 6.1 Protein, DNA and RNA chains [i](#)

In the following table, the column labelled ‘#RSRZ> 2’ contains the number (and percentage) of RSRZ outliers, followed by percent RSRZ outliers for the chain as percentile scores relative to all X-ray entries and entries of similar resolution. The OWAB column contains the minimum, median, 95<sup>th</sup> percentile and maximum values of the occupancy-weighted average B-factor per residue. The column labelled ‘Q< 0.9’ lists the number of (and percentage) of residues with an average occupancy less than 0.9.

Mol	Chain	Analysed	<RSRZ>	#RSRZ>2	OWAB(Å <sup>2</sup> )	Q<0.9
1	A	534/548 (97%)	0.15	31 (5%) 23 31	26, 40, 69, 147	0
1	B	533/548 (97%)	0.32	45 (8%) 11 15	30, 46, 72, 127	0
All	All	1067/1096 (97%)	0.23	76 (7%) 16 22	26, 43, 71, 147	0

The worst 5 of 76 RSRZ outliers are listed below:

Mol	Chain	Res	Type	RSRZ
1	B	544	ALA	15.3
1	B	497	SER	7.4
1	A	495	SER	6.7
1	A	493	ARG	5.9
1	B	78	PRO	5.3

### 6.2 Non-standard residues in protein, DNA, RNA chains [i](#)

In the following table, the Atoms column lists the number of modelled atoms in the group and the number defined in the chemical component dictionary. The B-factors column lists the minimum, median, 95<sup>th</sup> percentile and maximum values of B factors of atoms in the group. The column labelled ‘Q< 0.9’ lists the number of atoms with occupancy less than 0.9.

Mol	Type	Chain	Res	Atoms	RSCC	RSR	B-factors(Å <sup>2</sup> )	Q<0.9
1	SBG	A	203	10/11	0.99	0.17	22,30,34,34	0
1	SBG	B	203	10/11	0.99	0.08	27,33,37,39	0

### 6.3 Carbohydrates [i](#)

There are no monosaccharides in this entry.

## 6.4 Ligands

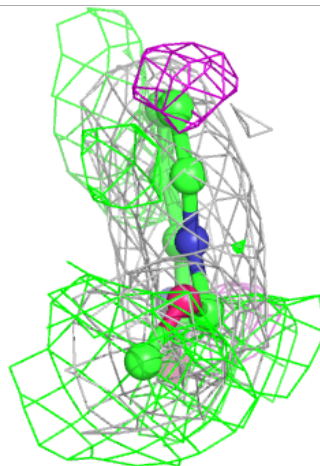
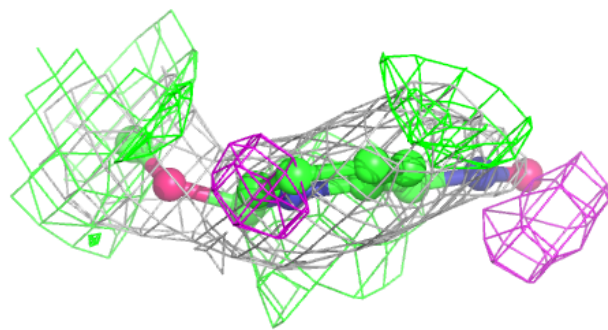
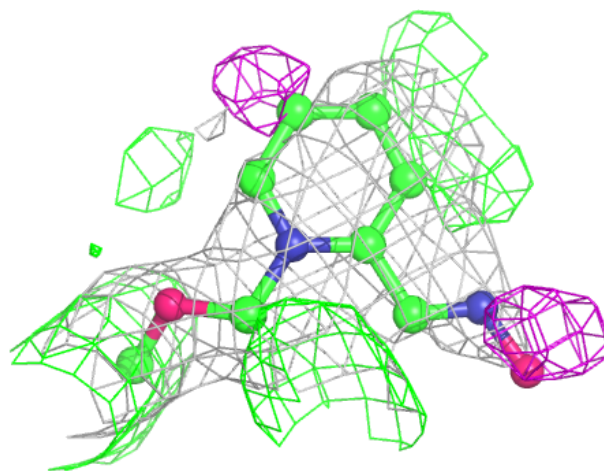
In the following table, the Atoms column lists the number of modelled atoms in the group and the number defined in the chemical component dictionary. The B-factors column lists the minimum, median, 95<sup>th</sup> percentile and maximum values of B factors of atoms in the group. The column labelled 'Q< 0.9' lists the number of atoms with occupancy less than 0.9.

Mol	Type	Chain	Res	Atoms	RSCC	RSR	B-factors(Å <sup>2</sup> )	Q<0.9
2	NAG	A	701	14/15	0.47	0.34	63,76,80,80	14
3	HI6	B	1545	12/21	0.62	0.36	40,58,68,69	12
5	PGE	B	1549	10/10	0.65	0.19	80,92,98,98	0
2	NAG	B	601	14/15	0.67	0.40	90,95,101,107	14
5	PGE	A	1545	10/10	0.78	0.19	75,79,83,85	0
3	HI6	A	1543	12/21	0.78	0.35	47,51,67,71	12
5	PGE	B	1547	10/10	0.79	0.20	71,75,89,92	0
2	NAG	A	601	14/15	0.79	0.23	60,68,72,75	14
6	PEG	B	1546	7/7	0.79	0.16	89,90,97,97	0
5	PGE	B	1548	10/10	0.85	0.15	86,89,93,94	0
4	P6G	A	1544	19/19	0.86	0.31	56,78,90,94	0

The following is a graphical depiction of the model fit to experimental electron density of all instances of the Ligand of Interest. In addition, ligands with molecular weight > 250 and outliers as shown on the geometry validation Tables will also be included. Each fit is shown from different orientation to approximate a three-dimensional view.

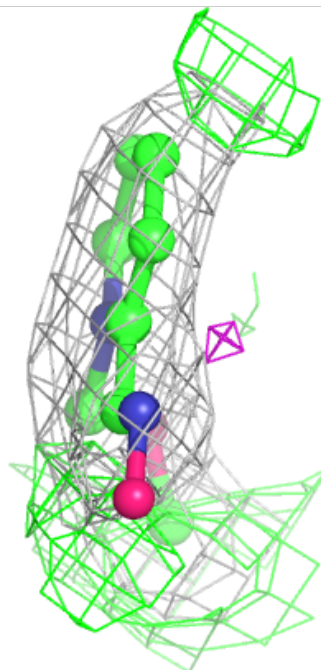
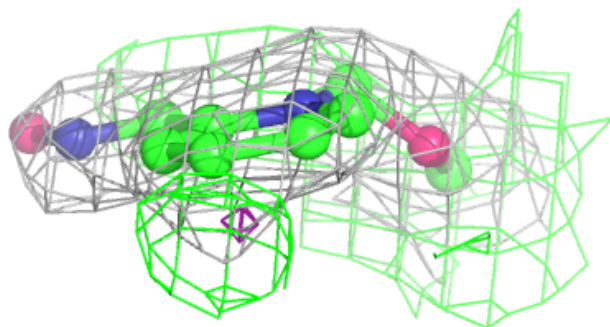
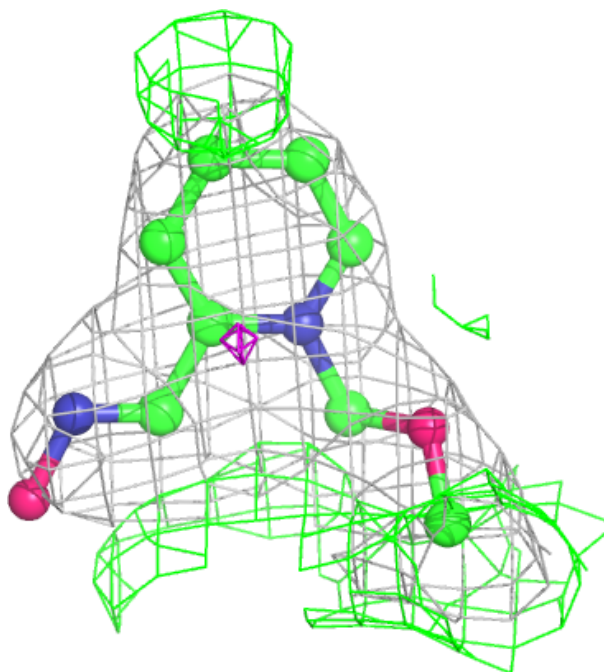
**Electron density around HI6 B 1545:**

$2mF_o-DF_c$  (at 0.7 rmsd) in gray  
 $mF_o-DF_c$  (at 3 rmsd) in purple (negative)  
and green (positive)



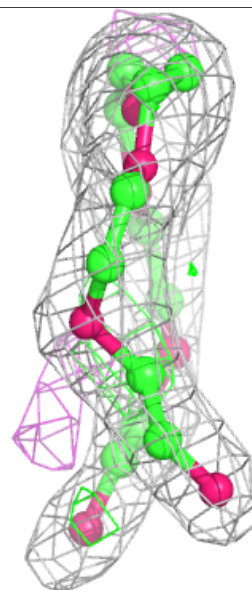
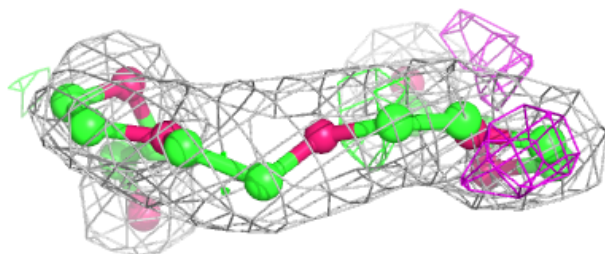
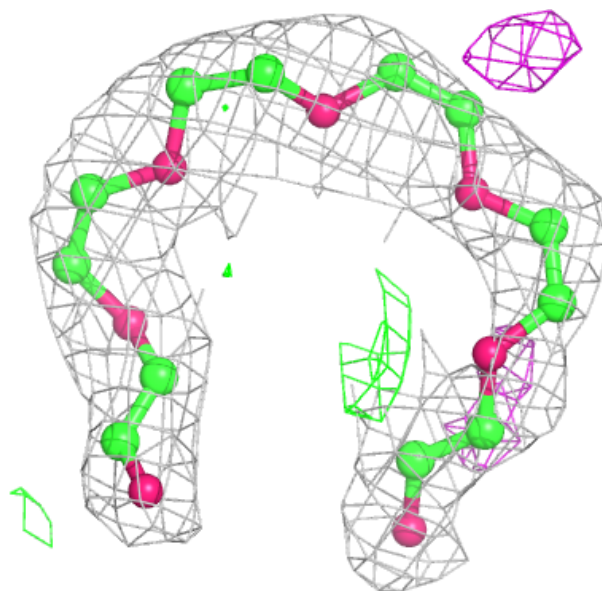
**Electron density around HI6 A 1543:**

$2mF_o-DF_c$  (at 0.7 rmsd) in gray  
 $mF_o-DF_c$  (at 3 rmsd) in purple (negative)  
and green (positive)



**Electron density around P6G A 1544:**

$2mF_o-DF_c$  (at 0.7 rmsd) in gray  
 $mF_o-DF_c$  (at 3 rmsd) in purple (negative)  
and green (positive)



## 6.5 Other polymers ⓘ

There are no such residues in this entry.