



Full wwPDB X-ray Structure Validation Report ⓘ

Nov 8, 2022 – 07:51 PM JST

PDB ID : 7WH5
Title : Crystal structure of human ClpP in complex with ZG180
Authors : Wei, B.Y.; Gan, J.H.; Yang, C.-G.
Deposited on : 2021-12-29
Resolution : 2.13 Å(reported)

This is a Full wwPDB X-ray Structure Validation Report for a publicly released PDB entry.

We welcome your comments at validation@mail.wwpdb.org

A user guide is available at

<https://www.wwpdb.org/validation/2017/XrayValidationReportHelp>

with specific help available everywhere you see the ⓘ symbol.

The types of validation reports are described at

<http://www.wwpdb.org/validation/2017/FAQs#types>.

The following versions of software and data (see [references ⓘ](#)) were used in the production of this report:

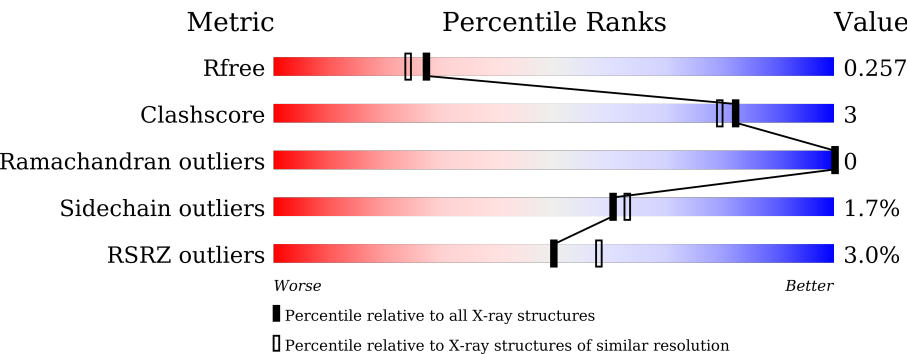
MolProbity : 4.02b-467
Mogul : 1.8.5 (274361), CSD as541be (2020)
Xtriage (Phenix) : 1.13
EDS : 2.31.2
buster-report : 1.1.7 (2018)
Percentile statistics : 20191225.v01 (using entries in the PDB archive December 25th 2019)
Refmac : 5.8.0158
CCP4 : 7.0.044 (Gargrove)
Ideal geometry (proteins) : Engh & Huber (2001)
Ideal geometry (DNA, RNA) : Parkinson et al. (1996)
Validation Pipeline (wwPDB-VP) : 2.31.2

1 Overall quality at a glance i

The following experimental techniques were used to determine the structure:
X-RAY DIFFRACTION

The reported resolution of this entry is 2.13 Å.

Percentile scores (ranging between 0-100) for global validation metrics of the entry are shown in the following graphic. The table shows the number of entries on which the scores are based.







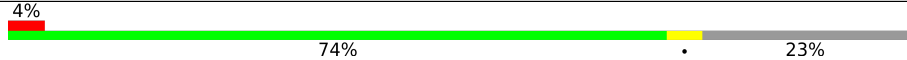
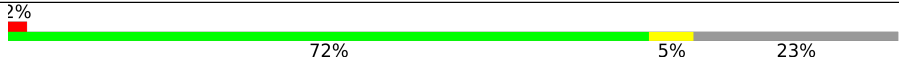
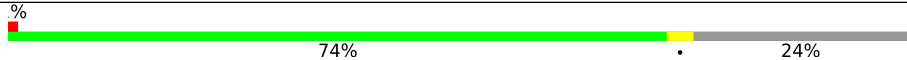
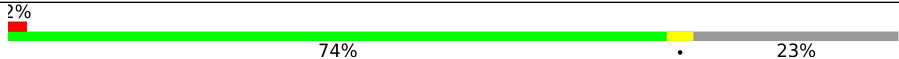
Metric	Whole archive (#Entries)	Similar resolution (#Entries, resolution range(Å))
R_{free}	130704	2523 (2.16-2.12)
Clashscore	141614	2653 (2.16-2.12)
Ramachandran outliers	138981	2618 (2.16-2.12)
Sidechain outliers	138945	2617 (2.16-2.12)
RSRZ outliers	127900	2485 (2.16-2.12)

The table below summarises the geometric issues observed across the polymeric chains and their fit to the electron density. The red, orange, yellow and green segments of the lower bar indicate the fraction of residues that contain outliers for ≥ 3 , 2, 1 and 0 types of geometric quality criteria respectively. A grey segment represents the fraction of residues that are not modelled. The numeric value for each fraction is indicated below the corresponding segment, with a dot representing fractions $\leq 5\%$. The upper red bar (where present) indicates the fraction of residues that have poor fit to the electron density. The numeric value is given above the bar.

Mol	Chain	Length	Quality of chain
1	A	221	<div><div>2%</div><div>73%</div><div>•</div><div>23%</div></div>
1	B	221	<div><div>2%</div><div>70%</div><div>8%</div><div>22%</div></div>
1	C	221	<div><div>3%</div><div>71%</div><div>6%</div><div>23%</div></div>
1	D	221	<div><div>71%</div><div>6%</div><div>23%</div></div>
1	E	221	<div><div>2%</div><div>75%</div><div>•</div><div>22%</div></div>
1	F	221	<div><div>2%</div><div>71%</div><div>8%</div><div>22%</div></div>

Continued on next page...

Continued from previous page...

Mol	Chain	Length	Quality of chain
1	G	221	
1	H	221	
1	I	221	
1	J	221	
1	K	221	
1	L	221	
1	M	221	
1	N	221	

2 Entry composition

There are 4 unique types of molecules in this entry. The entry contains 19072 atoms, of which 0 are hydrogens and 0 are deuteriums.

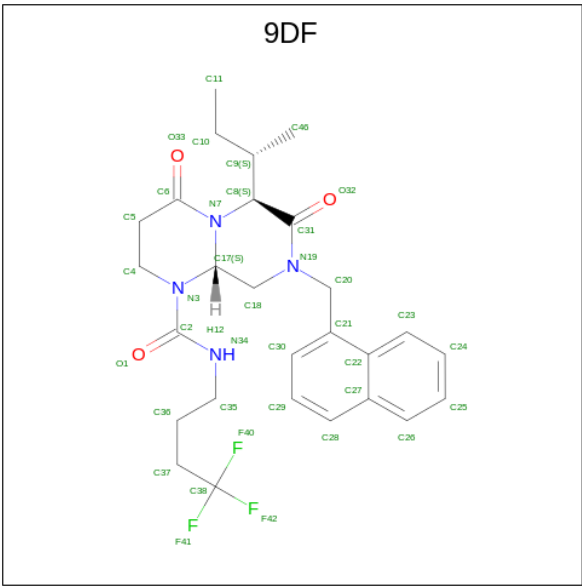
In the tables below, the ZeroOcc column contains the number of atoms modelled with zero occupancy, the AltConf column contains the number of residues with at least one atom in alternate conformation and the Trace column contains the number of residues modelled with at most 2 atoms.

- Molecule 1 is a protein called ATP-dependent Clp protease proteolytic subunit, mitochondrial.

Mol	Chain	Residues	Atoms					ZeroOcc	AltConf	Trace
1	A	170	Total	C	N	O	S	0	0	0
			1306	836	221	236	13			
1	B	172	Total	C	N	O	S	0	0	0
			1293	830	215	236	12			
1	C	170	Total	C	N	O	S	0	0	0
			1302	834	217	238	13			
1	D	171	Total	C	N	O	S	0	0	0
			1316	842	221	240	13			
1	E	172	Total	C	N	O	S	0	0	0
			1322	846	223	240	13			
1	F	173	Total	C	N	O	S	0	0	0
			1301	835	215	238	13			
1	G	171	Total	C	N	O	S	0	0	0
			1303	835	219	236	13			
1	H	172	Total	C	N	O	S	0	0	0
			1322	848	221	240	13			
1	I	177	Total	C	N	O	S	0	0	0
			1343	862	227	242	12			
1	J	171	Total	C	N	O	S	0	0	0
			1300	834	220	234	12			
1	K	171	Total	C	N	O	S	0	0	0
			1280	821	212	235	12			
1	L	170	Total	C	N	O	S	0	0	0
			1295	829	218	235	13			
1	M	169	Total	C	N	O	S	0	0	0
			1305	834	222	236	13			
1	N	170	Total	C	N	O	S	0	0	0
			1311	838	221	239	13			

- Molecule 2 is (6S,9aS)-6-[(2S)-butan-2-yl]-8-(naphthalen-1-ylmethyl)-4,7-bis(oxidanylidene)-N-[4,4,4-tris(fluoranyl)butyl]-3,6,9,9a-tetrahydro-2H-pyrazino[1,2-a]pyrimidine-1-carboxamide (three-letter code: 9DF) (formula: C₂₇H₃₃F₃N₄O₃) (labeled as "Ligand of Interest" by

depositor).



Mol	Chain	Residues	Atoms					ZeroOcc	AltConf
2	A	1	Total	C	F	N	O	0	0
			37	27	3	4	3		
2	A	1	Total	C	F	N	O	0	0
			37	27	3	4	3		
2	C	1	Total	C	F	N	O	0	0
			37	27	3	4	3		
2	C	1	Total	C	F	N	O	0	0
			37	27	3	4	3		
2	D	1	Total	C	F	N	O	0	0
			37	27	3	4	3		
2	E	1	Total	C	F	N	O	0	0
			37	27	3	4	3		
2	F	1	Total	C	F	N	O	0	0
			37	27	3	4	3		
2	H	1	Total	C	F	N	O	0	0
			37	27	3	4	3		
2	H	1	Total	C	F	N	O	0	0
			37	27	3	4	3		
2	I	1	Total	C	F	N	O	0	0
			37	27	3	4	3		
2	J	1	Total	C	F	N	O	0	0
			37	27	3	4	3		
2	K	1	Total	C	F	N	O	0	0
			37	27	3	4	3		
2	L	1	Total	C	F	N	O	0	0
			37	27	3	4	3		

Continued on next page...

Continued from previous page...

Mol	Chain	Residues	Atoms					ZeroOcc	AltConf
2	N	1	Total	C	F	N	O	0	0
			37	27	3	4	3		

- Molecule 3 is MAGNESIUM ION (three-letter code: MG) (formula: Mg).

Mol	Chain	Residues	Atoms		ZeroOcc	AltConf
3	N	1	Total	Mg	0	0
			1	1		

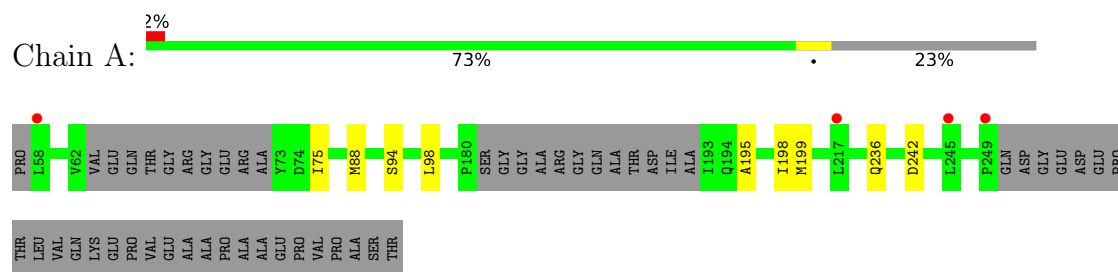
- Molecule 4 is water.

Mol	Chain	Residues	Atoms		ZeroOcc	AltConf
4	A	14	Total	O	0	0
			14	14		
4	B	14	Total	O	0	0
			14	14		
4	C	23	Total	O	0	0
			23	23		
4	D	36	Total	O	0	0
			36	36		
4	E	9	Total	O	0	0
			9	9		
4	F	13	Total	O	0	0
			13	13		
4	G	13	Total	O	0	0
			13	13		
4	H	16	Total	O	0	0
			16	16		
4	I	8	Total	O	0	0
			8	8		
4	J	5	Total	O	0	0
			5	5		
4	K	8	Total	O	0	0
			8	8		
4	L	19	Total	O	0	0
			19	19		
4	M	37	Total	O	0	0
			37	37		
4	N	39	Total	O	0	0
			39	39		

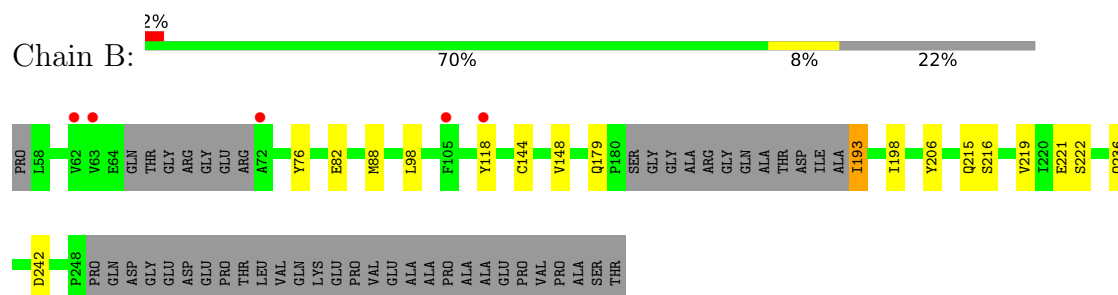
3 Residue-property plots [i](#)

These plots are drawn for all protein, RNA, DNA and oligosaccharide chains in the entry. The first graphic for a chain summarises the proportions of the various outlier classes displayed in the second graphic. The second graphic shows the sequence view annotated by issues in geometry and electron density. Residues are color-coded according to the number of geometric quality criteria for which they contain at least one outlier: green = 0, yellow = 1, orange = 2 and red = 3 or more. A red dot above a residue indicates a poor fit to the electron density ($RSRZ > 2$). Stretches of 2 or more consecutive residues without any outlier are shown as a green connector. Residues present in the sample, but not in the model, are shown in grey.

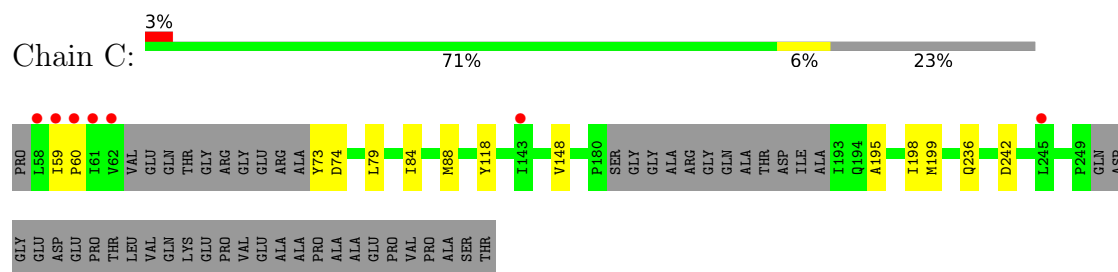
- Molecule 1: ATP-dependent Clp protease proteolytic subunit, mitochondrial



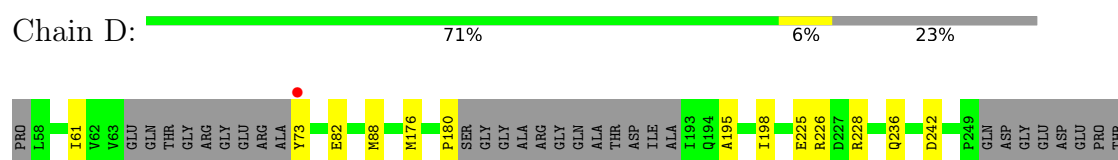
- Molecule 1: ATP-dependent Clp protease proteolytic subunit, mitochondrial



- Molecule 1: ATP-dependent Clp protease proteolytic subunit, mitochondrial




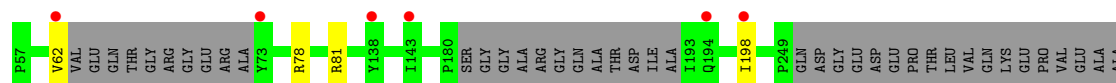
- Molecule 1: ATP-dependent Clp protease proteolytic subunit, mitochondrial



ALA
PRO
ALA
ALA
GLU
PRO
GLU
VAL
PRO
ALA
SER
THR


- Molecule 1: ATP-dependent Clp protease proteolytic subunit, mitochondrial

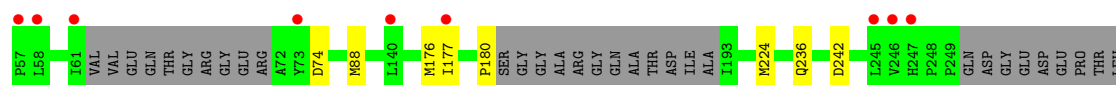
Chain J:  3% 76% 23%



PRO
ALA
ALA
GLU
VAL
PRO
VAL
PRO
ALA
SER
THR

- Molecule 1: ATP-dependent Clp protease proteolytic subunit, mitochondrial

Chain K:  4% 74% 23%



VAL
GLN
LYS
GLU
VAL
PRO
VAL
GLU
ALA
ALA
PRO
GLU
ALA
ALA
PRO
THR


- Molecule 1: ATP-dependent Clp protease proteolytic subunit, mitochondrial

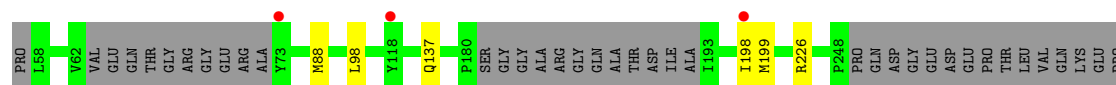
Chain L:  2% 72% 5% 23%



ASP
GLU
PRO
THR
LEU
VAL
GLN
LYS
GLU
VAL
PRO
VAL
GLU
ALA
ALA
PRO
THR


- Molecule 1: ATP-dependent Clp protease proteolytic subunit, mitochondrial

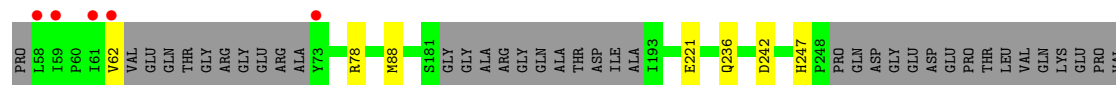
Chain M:  0% 74% 24%



VAL
GLU
ALA
ALA
PRO
VAL
GLU
ALA
ALA
PRO
VAL
GLU
ALA
ALA
PRO
THR

- Molecule 1: ATP-dependent Clp protease proteolytic subunit, mitochondrial

Chain N:  2% 74% 23%



GLU
ALA
ALA
PRO
ALA
ALA
GLU
PRO
VAL
PRO
ALA
SER
THR

4 Data and refinement statistics

Property	Value	Source
Space group	P 1 21 1	Depositor
Cell constants a, b, c, α , β , γ	111.89Å 97.03Å 131.42Å 90.00° 93.70° 90.00°	Depositor
Resolution (Å)	54.33 – 2.13 54.33 – 2.13	Depositor EDS
% Data completeness (in resolution range)	99.4 (54.33-2.13) 99.5 (54.33-2.13)	Depositor EDS
R_{merge}	0.12	Depositor
R_{sym}	(Not available)	Depositor
$\langle I/\sigma(I) \rangle$ ¹	1.20 (at 2.12Å)	Xtriage
Refinement program	REFMAC 5.8.0158	Depositor
R, R_{free}	0.230 , 0.249 0.242 , 0.257	Depositor DCC
R_{free} test set	7770 reflections (4.96%)	wwPDB-VP
Wilson B-factor (Å ²)	42.3	Xtriage
Anisotropy	0.202	Xtriage
Bulk solvent k_{sol} (e/Å ³), B_{sol} (Å ²)	0.33 , 43.9	EDS
L-test for twinning ²	$\langle L \rangle = 0.49$, $\langle L^2 \rangle = 0.32$	Xtriage
Estimated twinning fraction	No twinning to report.	Xtriage
F_o, F_c correlation	0.95	EDS
Total number of atoms	19072	wwPDB-VP
Average B, all atoms (Å ²)	53.0	wwPDB-VP

Xtriage's analysis on translational NCS is as follows: *The largest off-origin peak in the Patterson function is 6.98% of the height of the origin peak. No significant pseudotranslation is detected.*

¹Intensities estimated from amplitudes.

²Theoretical values of $\langle |L| \rangle$, $\langle L^2 \rangle$ for acentric reflections are 0.5, 0.333 respectively for untwinned datasets, and 0.375, 0.2 for perfectly twinned datasets.

5 Model quality [i](#)

5.1 Standard geometry [i](#)

Bond lengths and bond angles in the following residue types are not validated in this section: MG, 9DF

The Z score for a bond length (or angle) is the number of standard deviations the observed value is removed from the expected value. A bond length (or angle) with $|Z| > 5$ is considered an outlier worth inspection. RMSZ is the root-mean-square of all Z scores of the bond lengths (or angles).

Mol	Chain	Bond lengths		Bond angles	
		RMSZ	# $ Z > 5$	RMSZ	# $ Z > 5$
1	A	0.54	0/1331	0.71	0/1805
1	B	0.59	0/1317	0.73	0/1791
1	C	0.57	0/1327	0.73	0/1799
1	D	0.64	0/1341	0.76	0/1818
1	E	0.56	0/1347	0.73	0/1827
1	F	0.52	0/1326	0.71	0/1803
1	G	0.54	0/1328	0.72	0/1801
1	H	0.54	0/1347	0.74	0/1827
1	I	0.57	0/1369	0.71	0/1858
1	J	0.51	0/1326	0.68	0/1800
1	K	0.54	0/1306	0.69	0/1776
1	L	0.55	0/1319	0.72	0/1788
1	M	0.58	0/1329	0.75	0/1800
1	N	0.65	0/1335	0.76	0/1807
All	All	0.57	0/18648	0.72	0/25300

There are no bond length outliers.

There are no bond angle outliers.

There are no chirality outliers.

There are no planarity outliers.

5.2 Too-close contacts [i](#)

In the following table, the Non-H and H(model) columns list the number of non-hydrogen atoms and hydrogen atoms in the chain respectively. The H(added) column lists the number of hydrogen atoms added and optimized by MolProbity. The Clashes column lists the number of clashes within the asymmetric unit, whereas Symm-Clashes lists symmetry-related clashes.

Mol	Chain	Non-H	H(model)	H(added)	Clashes	Symm-Clashes
1	A	1306	0	1316	6	0
1	B	1293	0	1278	14	0
1	C	1302	0	1309	12	0
1	D	1316	0	1327	10	0
1	E	1322	0	1334	3	0
1	F	1301	0	1287	17	0
1	G	1303	0	1309	7	0
1	H	1322	0	1341	5	0
1	I	1343	0	1353	7	0
1	J	1300	0	1301	6	0
1	K	1280	0	1255	7	0
1	L	1295	0	1303	6	0
1	M	1305	0	1322	5	0
1	N	1311	0	1330	4	0
2	A	74	0	0	1	0
2	C	74	0	0	1	0
2	D	37	0	0	0	0
2	E	37	0	0	0	0
2	F	37	0	0	0	0
2	H	74	0	0	1	0
2	I	37	0	0	0	0
2	J	37	0	0	0	0
2	K	37	0	0	1	0
2	L	37	0	0	1	0
2	N	37	0	0	0	0
3	N	1	0	0	0	0
4	A	14	0	0	0	0
4	B	14	0	0	2	0
4	C	23	0	0	0	0
4	D	36	0	0	1	0
4	E	9	0	0	0	0
4	F	13	0	0	0	0
4	G	13	0	0	2	0
4	H	16	0	0	0	0
4	I	8	0	0	0	0
4	J	5	0	0	0	0
4	K	8	0	0	0	0
4	L	19	0	0	0	0
4	M	37	0	0	0	0
4	N	39	0	0	0	0
All	All	19072	0	18365	94	0

The all-atom clashscore is defined as the number of clashes found per 1000 atoms (including hydrogen atoms). The all-atom clashscore for this structure is 3.

All (94) close contacts within the same asymmetric unit are listed below, sorted by their clash magnitude.

Atom-1	Atom-2	Interatomic distance (Å)	Clash overlap (Å)
1:F:198:ILE:HG21	1:J:198:ILE:HD11	1.29	1.10
1:F:198:ILE:HG21	1:J:198:ILE:CD1	1.89	1.02
1:B:118:TYR:CE2	1:B:148:VAL:HG21	2.14	0.82
1:A:94:SER:O	1:A:98:LEU:HD23	1.85	0.76
1:F:198:ILE:CG2	1:J:198:ILE:HD11	2.16	0.72
1:G:61:ILE:HG22	4:G:309:HOH:O	1.92	0.69
1:F:244:VAL:O	1:F:244:VAL:HG23	1.93	0.68
1:B:148:VAL:HG23	1:B:148:VAL:O	1.94	0.68
1:I:193:ILE:HG21	1:I:198:ILE:HD11	1.77	0.67
1:C:73:TYR:HA	1:D:61:ILE:HD11	1.75	0.67
1:B:118:TYR:HE2	1:B:148:VAL:HG21	1.61	0.65
1:A:198:ILE:HG21	1:H:198:ILE:HG21	1.79	0.64
1:I:193:ILE:CG2	1:I:198:ILE:HD11	2.28	0.64
1:B:216:SER:O	1:B:219:VAL:HG22	1.99	0.62
1:F:245:LEU:HD12	1:F:245:LEU:N	2.14	0.62
1:B:215:GLN:HB3	1:B:219:VAL:HG21	1.80	0.62
1:B:215:GLN:HB3	1:B:219:VAL:CG2	2.29	0.62
1:G:230:MET:HE1	1:G:240:ILE:HD12	1.83	0.61
1:L:236:GLN:NE2	1:L:242:ASP:O	2.36	0.59
1:G:230:MET:HE3	1:G:235:ALA:HB2	1.84	0.59
1:F:118:TYR:HE2	1:F:148:VAL:HG21	1.68	0.58
1:G:61:ILE:CG2	4:G:309:HOH:O	2.50	0.57
1:C:118:TYR:HE2	1:C:148:VAL:HG21	1.69	0.57
1:D:176:MET:HE3	1:D:180:PRO:HG3	1.86	0.56
1:I:62:VAL:HG21	1:I:78:ARG:HG2	1.88	0.55
1:K:176:MET:HE3	1:K:180:PRO:HG3	1.88	0.55
1:D:73:TYR:OH	1:E:63:VAL:CB	2.57	0.52
1:C:59:ILE:CG2	1:C:74:ASP:HB2	2.39	0.52
1:J:81:ARG:O	1:J:81:ARG:HG3	2.09	0.52
1:F:198:ILE:HG21	1:J:198:ILE:HD12	1.87	0.52
1:C:59:ILE:HG22	1:C:74:ASP:HB2	1.92	0.51
1:M:137:GLN:O	1:N:247:HIS:CE1	2.63	0.51
1:C:195:ALA:HB2	1:M:198:ILE:HG22	1.93	0.50
1:A:94:SER:O	1:A:98:LEU:CD2	2.57	0.50
2:A:302:9DF:C36	1:B:82:GLU:CB	2.89	0.50
1:C:236:GLN:NE2	1:C:242:ASP:O	2.45	0.50
1:L:104:LEU:HD11	2:L:301:9DF:C28	2.42	0.50
1:F:243:LYS:HB3	1:F:245:LEU:HD11	1.92	0.50
1:B:236:GLN:NE2	1:B:242:ASP:O	2.44	0.50
1:D:198:ILE:HG21	1:L:198:ILE:HG21	1.94	0.49

Continued on next page...

Continued from previous page...

Atom-1	Atom-2	Interatomic distance (Å)	Clash overlap (Å)
1:K:236:GLN:NE2	1:K:242:ASP:O	2.45	0.49
1:A:236:GLN:NE2	1:A:242:ASP:O	2.45	0.49
1:D:176:MET:HE3	1:D:180:PRO:CG	2.43	0.49
1:D:226:ARG:NH2	4:D:401:HOH:O	2.36	0.49
1:E:236:GLN:NE2	1:E:242:ASP:O	2.45	0.49
1:N:236:GLN:NE2	1:N:242:ASP:O	2.45	0.48
1:K:177:ILE:HD12	1:K:224:MET:HG2	1.95	0.47
1:H:236:GLN:NE2	1:H:242:ASP:O	2.45	0.47
2:C:301:9DF:C36	1:D:82:GLU:HG3	2.45	0.47
1:I:193:ILE:HD11	1:I:197:GLU:HG2	1.96	0.47
1:F:236:GLN:NE2	1:F:242:ASP:O	2.44	0.46
1:B:148:VAL:O	1:B:148:VAL:CG2	2.62	0.46
1:I:236:GLN:NE2	1:I:242:ASP:O	2.44	0.46
1:K:176:MET:HE3	1:K:180:PRO:CG	2.45	0.46
1:D:236:GLN:NE2	1:D:242:ASP:O	2.45	0.46
1:I:78:ARG:HA	1:I:78:ARG:HD2	1.79	0.45
1:B:193:ILE:HD11	1:B:198:ILE:HG12	1.98	0.45
4:B:307:HOH:O	1:C:60:PRO:HA	2.17	0.45
1:C:199:MET:HG3	1:M:199:MET:HG3	1.99	0.45
1:A:98:LEU:HD22	1:B:76:TYR:OH	2.16	0.45
1:J:62:VAL:HG21	1:J:78:ARG:HG2	1.98	0.45
1:B:179:GLN:NE2	4:B:301:HOH:O	2.24	0.44
1:D:225:GLU:OE1	1:M:226:ARG:HD2	2.17	0.44
1:N:62:VAL:HG21	1:N:78:ARG:HG2	1.99	0.44
1:L:195:ALA:O	1:L:198:ILE:HG22	2.18	0.44
1:E:59:ILE:HD13	1:F:58:LEU:HG	1.99	0.44
1:F:217:LEU:HD23	1:F:217:LEU:HA	1.77	0.44
1:G:79:LEU:HD22	1:G:84:ILE:HD12	2.00	0.44
1:A:195:ALA:O	1:A:198:ILE:HG22	2.18	0.44
1:D:195:ALA:O	1:D:198:ILE:HG22	2.18	0.43
1:F:195:ALA:O	1:F:198:ILE:HG22	2.18	0.43
1:K:74:ASP:N	1:K:74:ASP:OD1	2.50	0.43
1:C:195:ALA:O	1:C:198:ILE:HG22	2.19	0.43
1:F:245:LEU:N	1:F:245:LEU:CD1	2.79	0.43
1:B:118:TYR:CE2	1:B:148:VAL:CG2	2.95	0.43
1:H:195:ALA:O	1:H:198:ILE:HG22	2.18	0.43
1:F:118:TYR:CE2	1:F:148:VAL:HG21	2.52	0.42
1:C:199:MET:HG2	1:M:199:MET:HG2	2.02	0.42
1:H:82:GLU:HG3	2:H:301:9DF:C37	2.50	0.42
1:L:79:LEU:HD22	1:L:84:ILE:HD12	2.02	0.42
1:F:244:VAL:O	1:F:244:VAL:CG2	2.63	0.42

Continued on next page...

Continued from previous page...

Atom-1	Atom-2	Interatomic distance (Å)	Clash overlap (Å)
1:K:176:MET:HE3	1:K:180:PRO:HD3	2.01	0.42
1:H:203:LYS:HB3	1:H:203:LYS:HE2	1.88	0.41
1:F:63:VAL:HA	1:F:71:ARG:O	2.21	0.41
1:I:193:ILE:HG23	1:I:198:ILE:HD11	2.02	0.41
1:B:206:TYR:CE2	1:B:221:GLU:HG2	2.56	0.41
1:G:61:ILE:HD13	1:G:61:ILE:HG21	1.74	0.41
1:K:177:ILE:H	1:K:177:ILE:HG13	1.76	0.41
1:C:118:TYR:CE2	1:C:148:VAL:CG2	3.04	0.40
1:C:79:LEU:HD22	1:C:84:ILE:HD12	2.02	0.40
1:N:78:ARG:HA	1:N:78:ARG:HD2	1.94	0.40
1:F:118:TYR:CE2	1:F:148:VAL:CG2	3.04	0.40
1:G:230:MET:HE1	1:G:240:ILE:CD1	2.50	0.40
2:K:301:9DF:C36	1:L:82:GLU:HG3	2.51	0.40

There are no symmetry-related clashes.

5.3 Torsion angles

5.3.1 Protein backbone

In the following table, the Percentiles column shows the percent Ramachandran outliers of the chain as a percentile score with respect to all X-ray entries followed by that with respect to entries of similar resolution.

The Analysed column shows the number of residues for which the backbone conformation was analysed, and the total number of residues.

Mol	Chain	Analysed	Favoured	Allowed	Outliers	Percentiles	
1	A	164/221 (74%)	162 (99%)	2 (1%)	0	100	100
1	B	166/221 (75%)	164 (99%)	2 (1%)	0	100	100
1	C	164/221 (74%)	162 (99%)	2 (1%)	0	100	100
1	D	165/221 (75%)	162 (98%)	3 (2%)	0	100	100
1	E	166/221 (75%)	164 (99%)	2 (1%)	0	100	100
1	F	167/221 (76%)	165 (99%)	2 (1%)	0	100	100
1	G	165/221 (75%)	163 (99%)	2 (1%)	0	100	100
1	H	166/221 (75%)	164 (99%)	2 (1%)	0	100	100
1	I	171/221 (77%)	169 (99%)	2 (1%)	0	100	100
1	J	165/221 (75%)	163 (99%)	2 (1%)	0	100	100

Continued on next page...

Continued from previous page...

Mol	Chain	Analysed	Favoured	Allowed	Outliers	Percentiles	
1	K	165/221 (75%)	163 (99%)	2 (1%)	0	100	100
1	L	164/221 (74%)	162 (99%)	2 (1%)	0	100	100
1	M	163/221 (74%)	160 (98%)	3 (2%)	0	100	100
1	N	164/221 (74%)	162 (99%)	2 (1%)	0	100	100
All	All	2315/3094 (75%)	2285 (99%)	30 (1%)	0	100	100

There are no Ramachandran outliers to report.

5.3.2 Protein sidechains ⓘ

In the following table, the Percentiles column shows the percent sidechain outliers of the chain as a percentile score with respect to all X-ray entries followed by that with respect to entries of similar resolution.

The Analysed column shows the number of residues for which the sidechain conformation was analysed, and the total number of residues.

Mol	Chain	Analysed	Rotameric	Outliers	Percentiles	
1	A	142/185 (77%)	139 (98%)	3 (2%)	53	54
1	B	136/185 (74%)	131 (96%)	5 (4%)	34	31
1	C	142/185 (77%)	141 (99%)	1 (1%)	84	87
1	D	144/185 (78%)	142 (99%)	2 (1%)	67	70
1	E	144/185 (78%)	141 (98%)	3 (2%)	53	54
1	F	138/185 (75%)	134 (97%)	4 (3%)	42	40
1	G	141/185 (76%)	138 (98%)	3 (2%)	53	54
1	H	145/185 (78%)	142 (98%)	3 (2%)	53	54
1	I	144/185 (78%)	142 (99%)	2 (1%)	67	70
1	J	139/185 (75%)	139 (100%)	0	100	100
1	K	134/185 (72%)	133 (99%)	1 (1%)	84	87
1	L	140/185 (76%)	137 (98%)	3 (2%)	53	54
1	M	143/185 (77%)	141 (99%)	2 (1%)	67	70
1	N	145/185 (78%)	143 (99%)	2 (1%)	67	70
All	All	1977/2590 (76%)	1943 (98%)	34 (2%)	60	63

All (34) residues with a non-rotameric sidechain are listed below:

Mol	Chain	Res	Type
1	A	75	ILE
1	A	88	MET
1	A	199	MET
1	B	88	MET
1	B	98	LEU
1	B	144	CYS
1	B	193	ILE
1	B	222	SER
1	C	88	MET
1	D	88	MET
1	D	228	ARG
1	E	88	MET
1	E	98	LEU
1	E	117	MET
1	F	88	MET
1	F	98	LEU
1	F	107	GLN
1	F	233	MET
1	G	61	ILE
1	G	88	MET
1	G	107	GLN
1	H	88	MET
1	H	98	LEU
1	H	203	LYS
1	I	78	ARG
1	I	98	LEU
1	K	88	MET
1	L	88	MET
1	L	98	LEU
1	L	228	ARG
1	M	88	MET
1	M	98	LEU
1	N	88	MET
1	N	221	GLU

Sometimes sidechains can be flipped to improve hydrogen bonding and reduce clashes. All (8) such sidechains are listed below:

Mol	Chain	Res	Type
1	A	247	HIS
1	B	179	GLN
1	B	204	GLN
1	F	107	GLN
1	G	207	ASN

Continued on next page...

Continued from previous page...

Mol	Chain	Res	Type
1	I	247	HIS
1	K	247	HIS
1	N	247	HIS

5.3.3 RNA [i](#)

There are no RNA molecules in this entry.

5.4 Non-standard residues in protein, DNA, RNA chains [i](#)

There are no non-standard protein/DNA/RNA residues in this entry.

5.5 Carbohydrates [i](#)

There are no monosaccharides in this entry.

5.6 Ligand geometry [i](#)

Of 15 ligands modelled in this entry, 1 is monoatomic - leaving 14 for Mogul analysis.

In the following table, the Counts columns list the number of bonds (or angles) for which Mogul statistics could be retrieved, the number of bonds (or angles) that are observed in the model and the number of bonds (or angles) that are defined in the Chemical Component Dictionary. The Link column lists molecule types, if any, to which the group is linked. The Z score for a bond length (or angle) is the number of standard deviations the observed value is removed from the expected value. A bond length (or angle) with $|Z| > 2$ is considered an outlier worth inspection. RMSZ is the root-mean-square of all Z scores of the bond lengths (or angles).

Mol	Type	Chain	Res	Link	Bond lengths			Bond angles		
					Counts	RMSZ	$\# Z > 2$	Counts	RMSZ	$\# Z > 2$
2	9DF	D	301	-	38,40,40	0.83	0	50,58,58	1.44	7 (14%)
2	9DF	F	301	-	38,40,40	0.93	2 (5%)	50,58,58	1.53	7 (14%)
2	9DF	A	301	-	38,40,40	0.93	3 (7%)	50,58,58	1.12	5 (10%)
2	9DF	A	302	-	38,40,40	0.97	2 (5%)	50,58,58	1.23	7 (14%)
2	9DF	E	301	-	38,40,40	0.82	1 (2%)	50,58,58	1.31	6 (12%)
2	9DF	H	302	-	38,40,40	0.82	0	50,58,58	1.14	4 (8%)
2	9DF	L	301	-	38,40,40	0.75	0	50,58,58	1.19	2 (4%)
2	9DF	I	301	-	38,40,40	0.77	0	50,58,58	1.21	7 (14%)
2	9DF	N	301	-	38,40,40	0.80	0	50,58,58	1.51	8 (16%)

Mol	Type	Chain	Res	Link	Bond lengths			Bond angles		
					Counts	RMSZ	# Z > 2	Counts	RMSZ	# Z > 2
2	9DF	J	301	-	38,40,40	0.77	0	50,58,58	1.23	5 (10%)
2	9DF	H	301	-	38,40,40	0.91	3 (7%)	50,58,58	1.30	8 (16%)
2	9DF	K	301	-	38,40,40	0.85	1 (2%)	50,58,58	1.32	9 (18%)
2	9DF	C	302	-	38,40,40	0.93	2 (5%)	50,58,58	1.18	4 (8%)
2	9DF	C	301	-	38,40,40	0.76	1 (2%)	50,58,58	1.25	4 (8%)

In the following table, the Chirals column lists the number of chiral outliers, the number of chiral centers analysed, the number of these observed in the model and the number defined in the Chemical Component Dictionary. Similar counts are reported in the Torsion and Rings columns. '-' means no outliers of that kind were identified.

Mol	Type	Chain	Res	Link	Chirals	Torsions	Rings
2	9DF	D	301	-	-	5/22/55/55	0/4/4/4
2	9DF	F	301	-	-	5/22/55/55	0/4/4/4
2	9DF	A	301	-	-	7/22/55/55	0/4/4/4
2	9DF	A	302	-	-	5/22/55/55	0/4/4/4
2	9DF	E	301	-	-	6/22/55/55	0/4/4/4
2	9DF	H	302	-	-	6/22/55/55	0/4/4/4
2	9DF	L	301	-	-	2/22/55/55	0/4/4/4
2	9DF	I	301	-	-	8/22/55/55	0/4/4/4
2	9DF	N	301	-	-	0/22/55/55	0/4/4/4
2	9DF	J	301	-	-	6/22/55/55	0/4/4/4
2	9DF	H	301	-	-	7/22/55/55	0/4/4/4
2	9DF	K	301	-	-	5/22/55/55	0/4/4/4
2	9DF	C	302	-	-	3/22/55/55	0/4/4/4
2	9DF	C	301	-	-	5/22/55/55	0/4/4/4

All (15) bond length outliers are listed below:

Mol	Chain	Res	Type	Atoms	Z	Observed(Å)	Ideal(Å)
2	F	301	9DF	C18-N19	3.28	1.50	1.46
2	C	302	9DF	C17-N3	3.00	1.50	1.46
2	A	302	9DF	C17-N3	2.90	1.50	1.46
2	A	301	9DF	C18-N19	2.73	1.50	1.46
2	E	301	9DF	C17-N3	2.66	1.49	1.46
2	K	301	9DF	C17-N3	2.63	1.49	1.46
2	A	302	9DF	C18-N19	2.61	1.49	1.46
2	F	301	9DF	C17-N3	2.54	1.49	1.46

Continued on next page...

Continued from previous page...

Mol	Chain	Res	Type	Atoms	Z	Observed(Å)	Ideal(Å)
2	H	301	9DF	C17-N3	2.46	1.49	1.46
2	H	301	9DF	C6-N7	2.25	1.37	1.35
2	C	302	9DF	C18-N19	2.15	1.49	1.46
2	H	301	9DF	C18-N19	2.12	1.49	1.46
2	A	301	9DF	C29-C28	2.07	1.41	1.36
2	A	301	9DF	C30-C21	2.04	1.41	1.37
2	C	301	9DF	C24-C23	2.03	1.41	1.36

All (83) bond angle outliers are listed below:

Mol	Chain	Res	Type	Atoms	Z	Observed(°)	Ideal(°)
2	F	301	9DF	C37-C36-C35	-6.14	101.80	112.46
2	N	301	9DF	C37-C36-C35	-5.79	102.40	112.46
2	D	301	9DF	C35-N34-C2	4.18	124.73	120.84
2	L	301	9DF	C10-C9-C8	3.87	118.72	111.48
2	E	301	9DF	C10-C9-C8	3.86	118.70	111.48
2	D	301	9DF	C5-C4-N3	-3.75	99.25	111.61
2	C	302	9DF	C10-C9-C8	3.55	118.10	111.48
2	C	301	9DF	C10-C9-C8	3.54	118.09	111.48
2	J	301	9DF	C10-C9-C8	3.39	117.81	111.48
2	F	301	9DF	C10-C9-C8	3.35	117.74	111.48
2	N	301	9DF	C5-C4-N3	-3.34	100.60	111.61
2	I	301	9DF	C35-N34-C2	3.26	123.87	120.84
2	A	302	9DF	C17-C18-N19	3.19	115.09	111.02
2	A	302	9DF	C10-C9-C8	3.06	117.19	111.48
2	K	301	9DF	C18-C17-N3	3.05	117.81	112.59
2	C	301	9DF	C21-C20-N19	3.01	118.63	113.45
2	K	301	9DF	C10-C9-C8	2.96	117.00	111.48
2	K	301	9DF	C20-C21-C22	2.91	125.01	119.93
2	H	301	9DF	C10-C9-C8	2.91	116.91	111.48
2	A	301	9DF	O1-C2-N34	-2.88	115.84	123.53
2	A	302	9DF	C20-C21-C22	2.85	124.92	119.93
2	D	301	9DF	O32-C31-N19	2.84	125.84	122.49
2	N	301	9DF	C5-C6-N7	2.83	121.96	117.97
2	D	301	9DF	C18-C17-N3	2.83	117.44	112.59
2	I	301	9DF	C10-C9-C8	2.82	116.74	111.48
2	F	301	9DF	C5-C4-N3	-2.81	102.36	111.61
2	J	301	9DF	C5-C4-N3	-2.73	102.64	111.61
2	E	301	9DF	C5-C4-N3	-2.72	102.67	111.61
2	K	301	9DF	C21-C20-N19	2.72	118.13	113.45
2	I	301	9DF	C20-C21-C22	2.70	124.66	119.93
2	H	301	9DF	C5-C6-N7	2.70	121.78	117.97

Continued on next page...

Continued from previous page...

Mol	Chain	Res	Type	Atoms	Z	Observed(°)	Ideal(°)
2	H	301	9DF	C18-C17-N3	2.69	117.19	112.59
2	H	301	9DF	C5-C4-N3	-2.57	103.15	111.61
2	N	301	9DF	C10-C9-C8	2.56	116.26	111.48
2	H	302	9DF	C10-C9-C8	2.55	116.23	111.48
2	A	301	9DF	C20-C21-C22	2.52	124.34	119.93
2	C	302	9DF	C5-C4-N3	-2.46	103.50	111.61
2	C	301	9DF	C9-C8-N7	2.45	115.88	111.76
2	F	301	9DF	C18-C17-N3	2.44	116.76	112.59
2	H	301	9DF	C36-C37-C38	-2.42	108.46	113.84
2	H	301	9DF	O33-C6-C5	-2.41	115.74	121.32
2	A	302	9DF	C35-N34-C2	2.41	123.08	120.84
2	E	301	9DF	C9-C8-N7	2.39	115.78	111.76
2	E	301	9DF	C20-C21-C22	2.38	124.10	119.93
2	A	301	9DF	C10-C9-C8	2.37	115.91	111.48
2	K	301	9DF	C5-C4-N3	-2.37	103.81	111.61
2	D	301	9DF	O32-C31-C8	-2.37	115.03	119.95
2	J	301	9DF	O33-C6-C5	-2.36	115.85	121.32
2	K	301	9DF	O32-C31-N19	2.36	125.28	122.49
2	K	301	9DF	O32-C31-C8	-2.35	115.06	119.95
2	H	302	9DF	C21-C20-N19	2.35	117.50	113.45
2	H	302	9DF	C20-C21-C22	2.32	123.98	119.93
2	I	301	9DF	C28-C27-C26	-2.31	117.80	123.19
2	J	301	9DF	C35-N34-C2	2.30	122.98	120.84
2	N	301	9DF	C18-C17-N3	2.30	116.52	112.59
2	J	301	9DF	C5-C6-N7	2.29	121.20	117.97
2	F	301	9DF	C20-C21-C22	2.29	123.94	119.93
2	N	301	9DF	O32-C31-N19	2.25	125.15	122.49
2	C	301	9DF	O32-C31-C8	-2.25	115.29	119.95
2	D	301	9DF	C20-C21-C22	2.21	123.80	119.93
2	C	302	9DF	C20-C21-C22	2.20	123.78	119.93
2	N	301	9DF	C21-C20-N19	2.20	117.25	113.45
2	E	301	9DF	O32-C31-C8	-2.20	115.39	119.95
2	H	301	9DF	C28-C27-C26	-2.16	118.15	123.19
2	A	302	9DF	C28-C27-C26	-2.15	118.16	123.19
2	A	301	9DF	C28-C27-C26	-2.14	118.19	123.19
2	H	301	9DF	C28-C27-C22	2.14	121.94	119.12
2	H	302	9DF	C37-C36-C35	-2.14	108.75	112.46
2	F	301	9DF	C28-C27-C26	-2.12	118.22	123.19
2	K	301	9DF	O1-C2-N34	-2.12	117.86	123.53
2	A	302	9DF	O1-C2-N34	-2.12	117.86	123.53
2	F	301	9DF	O32-C31-N19	2.12	124.99	122.49
2	K	301	9DF	C28-C27-C26	-2.11	118.25	123.19

Continued on next page...

Continued from previous page...

Mol	Chain	Res	Type	Atoms	Z	Observed(°)	Ideal(°)
2	D	301	9DF	C28-C27-C26	-2.11	118.26	123.19
2	I	301	9DF	O33-C6-C5	-2.09	116.48	121.32
2	N	301	9DF	C35-N34-C2	2.08	122.78	120.84
2	C	302	9DF	O1-C2-N34	-2.08	117.97	123.53
2	I	301	9DF	C5-C4-N3	-2.07	104.78	111.61
2	A	301	9DF	O32-C31-N19	2.06	124.93	122.49
2	L	301	9DF	C20-C21-C22	2.06	123.54	119.93
2	I	301	9DF	O32-C31-N19	2.02	124.88	122.49
2	A	302	9DF	C18-C17-N3	2.02	116.05	112.59
2	E	301	9DF	C28-C27-C26	-2.02	118.48	123.19

There are no chirality outliers.

All (70) torsion outliers are listed below:

Mol	Chain	Res	Type	Atoms
2	D	301	9DF	C35-C36-C37-C38
2	E	301	9DF	C36-C37-C38-F42
2	H	302	9DF	O1-C2-N3-C17
2	I	301	9DF	C36-C37-C38-F41
2	I	301	9DF	C11-C10-C9-C46
2	K	301	9DF	N34-C35-C36-C37
2	F	301	9DF	C11-C10-C9-C8
2	A	302	9DF	N34-C35-C36-C37
2	I	301	9DF	N34-C35-C36-C37
2	C	301	9DF	N34-C35-C36-C37
2	D	301	9DF	C36-C35-N34-C2
2	I	301	9DF	C11-C10-C9-C8
2	E	301	9DF	C11-C10-C9-C8
2	E	301	9DF	C36-C35-N34-C2
2	L	301	9DF	C36-C35-N34-C2
2	A	302	9DF	C11-C10-C9-C8
2	J	301	9DF	N34-C35-C36-C37
2	I	301	9DF	C36-C35-N34-C2
2	A	301	9DF	C11-C10-C9-C8
2	A	301	9DF	N34-C35-C36-C37
2	E	301	9DF	C36-C37-C38-F41
2	H	302	9DF	C36-C37-C38-F41
2	H	302	9DF	C36-C37-C38-F42
2	I	301	9DF	C36-C37-C38-F40
2	I	301	9DF	C36-C37-C38-F42
2	J	301	9DF	C36-C37-C38-F40
2	J	301	9DF	C36-C37-C38-F42

Continued on next page...

Continued from previous page...

Mol	Chain	Res	Type	Atoms
2	K	301	9DF	C36-C37-C38-F40
2	K	301	9DF	C36-C37-C38-F41
2	K	301	9DF	C36-C37-C38-F42
2	D	301	9DF	N34-C35-C36-C37
2	D	301	9DF	C11-C10-C9-C8
2	F	301	9DF	C11-C10-C9-C46
2	H	301	9DF	C11-C10-C9-C8
2	A	301	9DF	C36-C37-C38-F40
2	A	301	9DF	C36-C37-C38-F42
2	E	301	9DF	C36-C37-C38-F40
2	H	302	9DF	C36-C37-C38-F40
2	J	301	9DF	C36-C37-C38-F41
2	A	301	9DF	C35-C36-C37-C38
2	C	301	9DF	C35-C36-C37-C38
2	K	301	9DF	C35-C36-C37-C38
2	L	301	9DF	C35-C36-C37-C38
2	A	301	9DF	C11-C10-C9-C46
2	A	302	9DF	C11-C10-C9-C46
2	E	301	9DF	C11-C10-C9-C46
2	D	301	9DF	C11-C10-C9-C46
2	H	301	9DF	C36-C37-C38-F41
2	H	301	9DF	C11-C10-C9-C46
2	H	301	9DF	N34-C35-C36-C37
2	A	301	9DF	C36-C37-C38-F41
2	A	302	9DF	C36-C37-C38-F40
2	C	301	9DF	C36-C37-C38-F40
2	C	301	9DF	C36-C37-C38-F42
2	C	302	9DF	C36-C37-C38-F42
2	F	301	9DF	C36-C37-C38-F40
2	F	301	9DF	C36-C37-C38-F41
2	F	301	9DF	C36-C37-C38-F42
2	H	301	9DF	C36-C37-C38-F40
2	J	301	9DF	C11-C10-C9-C8
2	H	301	9DF	C36-C35-N34-C2
2	I	301	9DF	C21-C20-N19-C18
2	A	302	9DF	C36-C37-C38-F42
2	C	302	9DF	C36-C37-C38-F40
2	H	301	9DF	C36-C37-C38-F42
2	H	302	9DF	C36-C35-N34-C2
2	C	301	9DF	C11-C10-C9-C8
2	C	302	9DF	C36-C35-N34-C2
2	H	302	9DF	N34-C2-N3-C17

Continued on next page...

Continued from previous page...

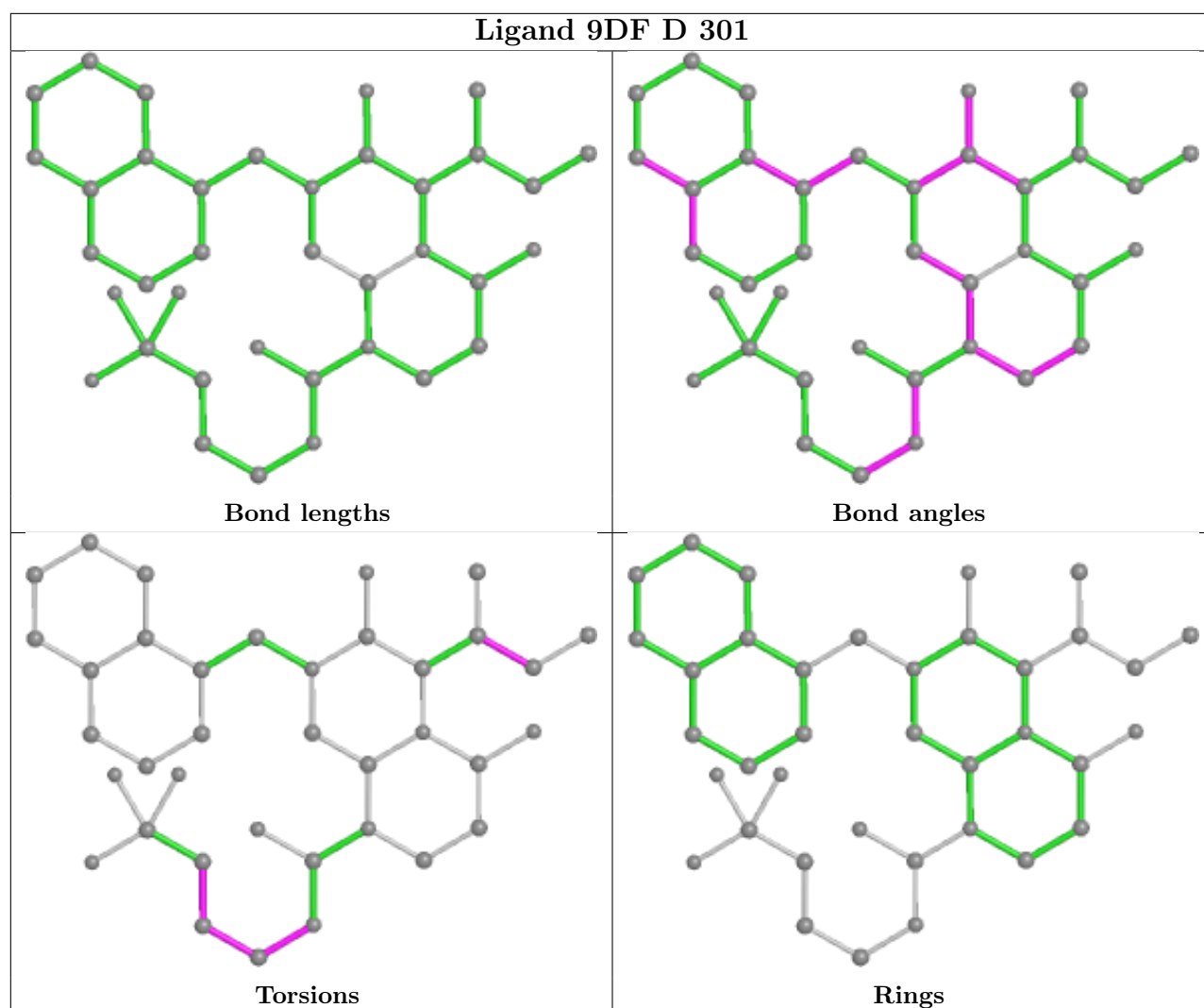
Mol	Chain	Res	Type	Atoms
2	J	301	9DF	C36-C35-N34-C2

There are no ring outliers.

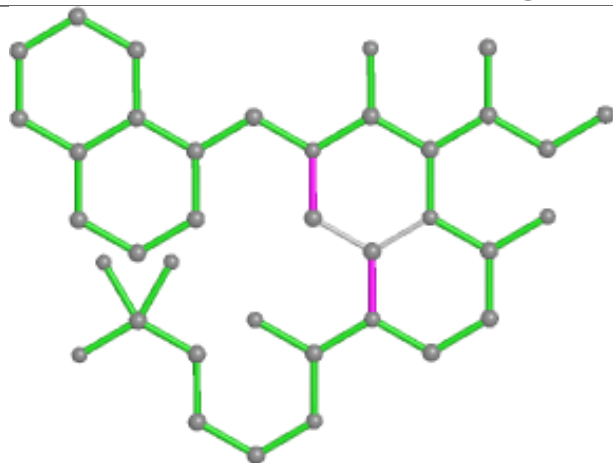
5 monomers are involved in 5 short contacts:

Mol	Chain	Res	Type	Clashes	Symm-Clashes
2	A	302	9DF	1	0
2	L	301	9DF	1	0
2	H	301	9DF	1	0
2	K	301	9DF	1	0
2	C	301	9DF	1	0

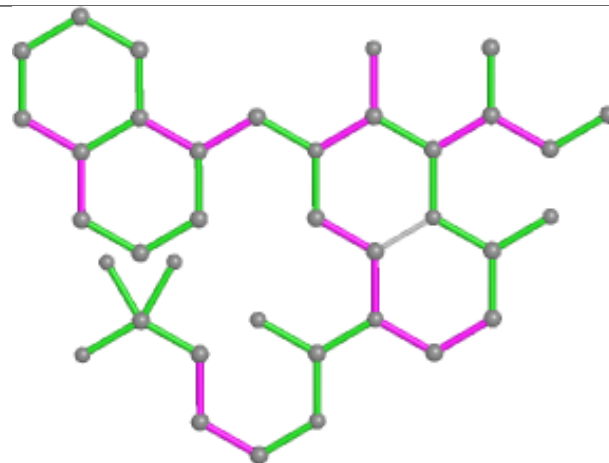
The following is a two-dimensional graphical depiction of Mogul quality analysis of bond lengths, bond angles, torsion angles, and ring geometry for all instances of the Ligand of Interest. In addition, ligands with molecular weight > 250 and outliers as shown on the validation Tables will also be included. For torsion angles, if less than 5% of the Mogul distribution of torsion angles is within 10 degrees of the torsion angle in question, then that torsion angle is considered an outlier. Any bond that is central to one or more torsion angles identified as an outlier by Mogul will be highlighted in the graph. For rings, the root-mean-square deviation (RMSD) between the ring in question and similar rings identified by Mogul is calculated over all ring torsion angles. If the average RMSD is greater than 60 degrees and the minimal RMSD between the ring in question and any Mogul-identified rings is also greater than 60 degrees, then that ring is considered an outlier. The outliers are highlighted in purple. The color gray indicates Mogul did not find sufficient equivalents in the CSD to analyse the geometry.



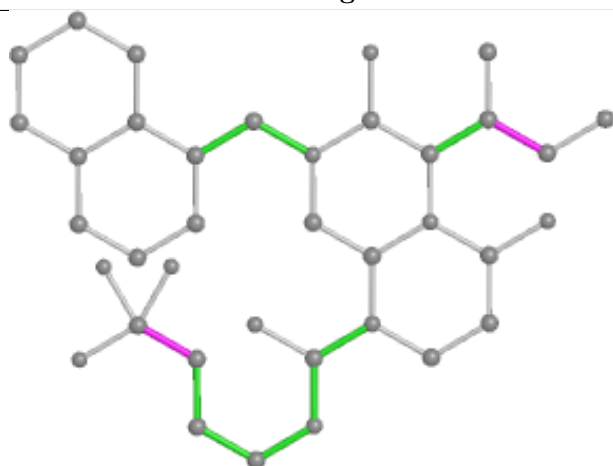
Ligand 9DF F 301



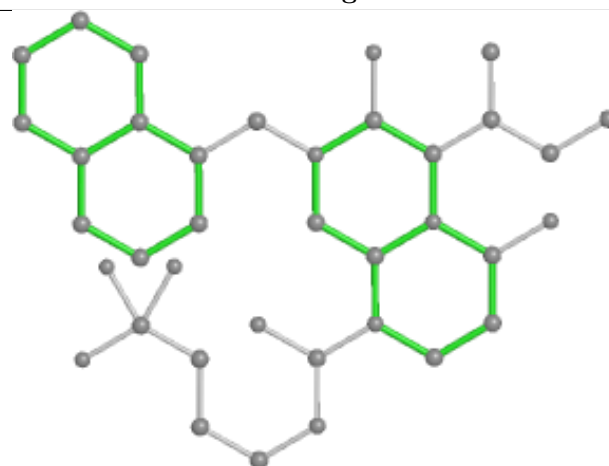
Bond lengths



Bond angles

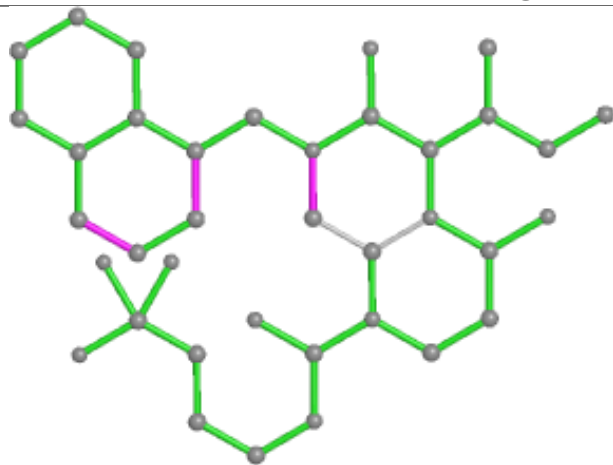


Torsions

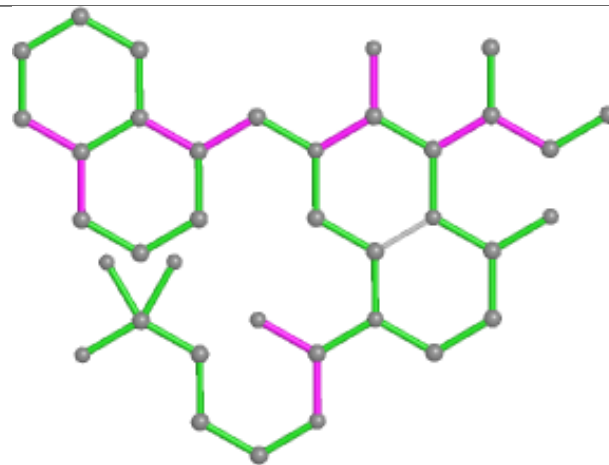


Rings

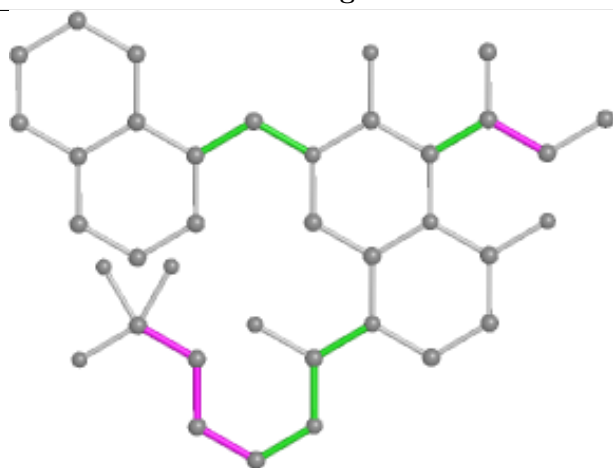
Ligand 9DF A 301



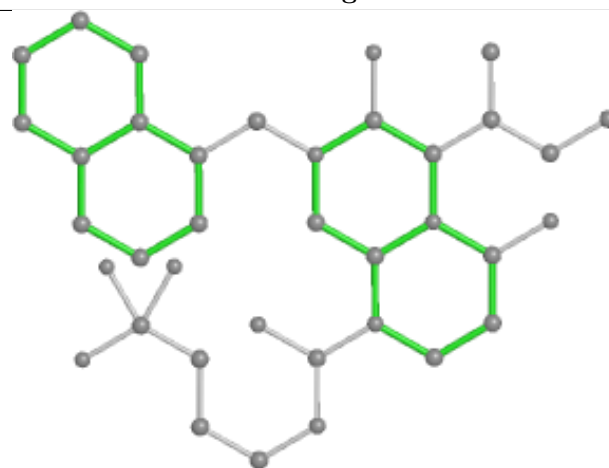
Bond lengths



Bond angles

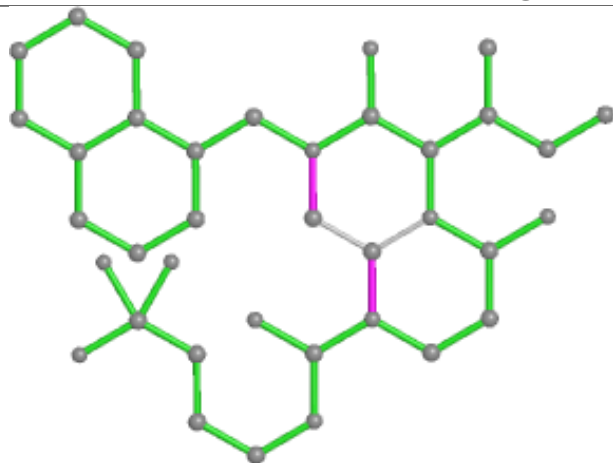


Torsions

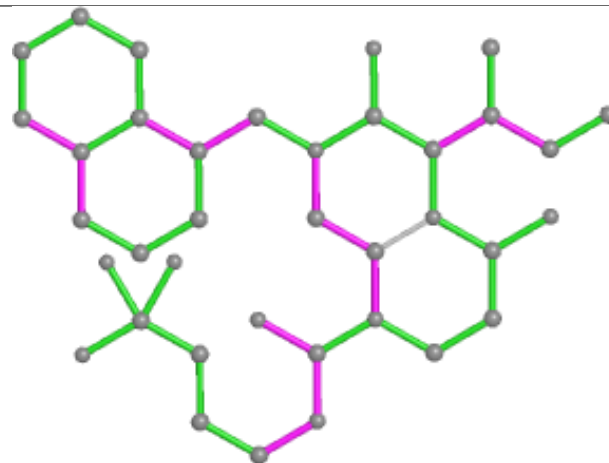


Rings

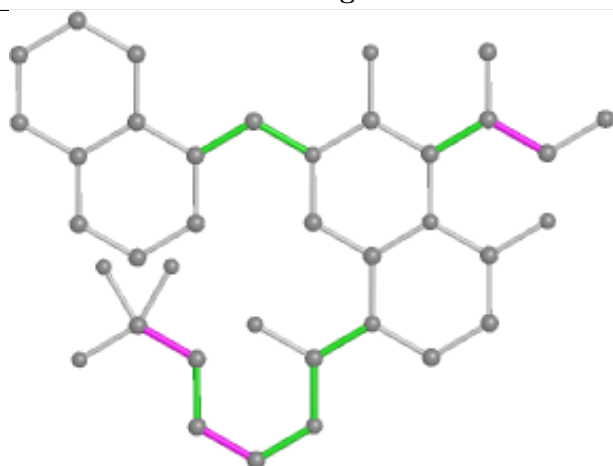
Ligand 9DF A 302



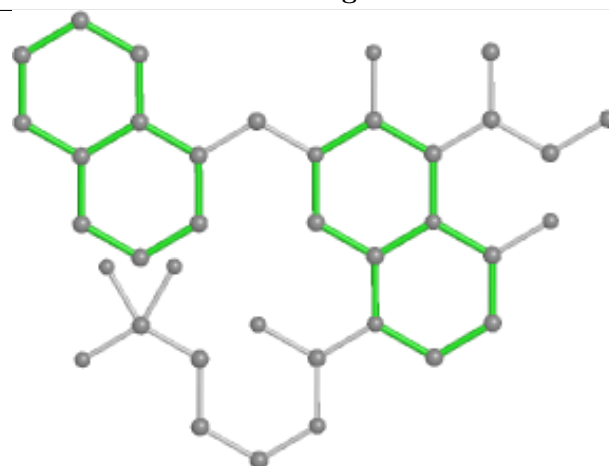
Bond lengths



Bond angles

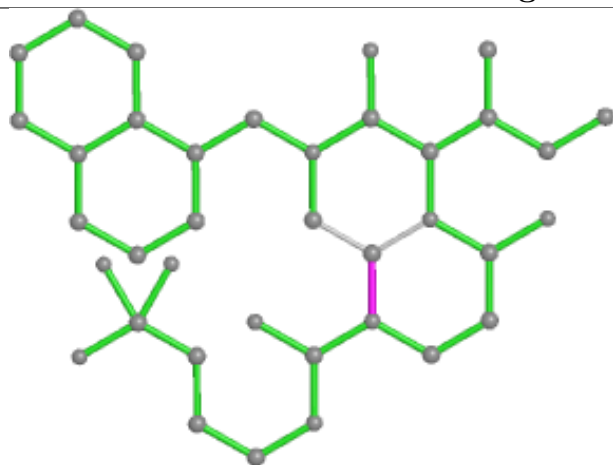


Torsions

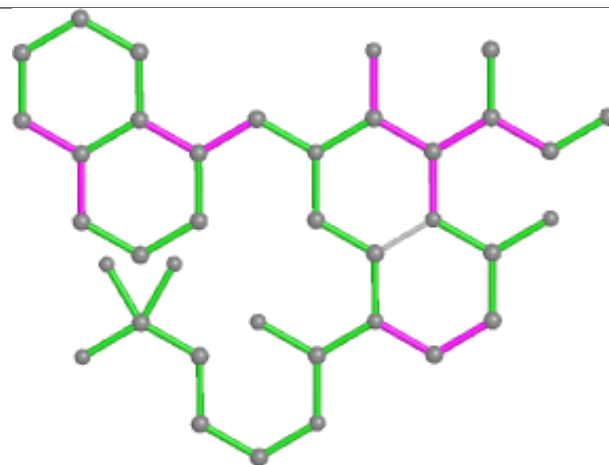


Rings

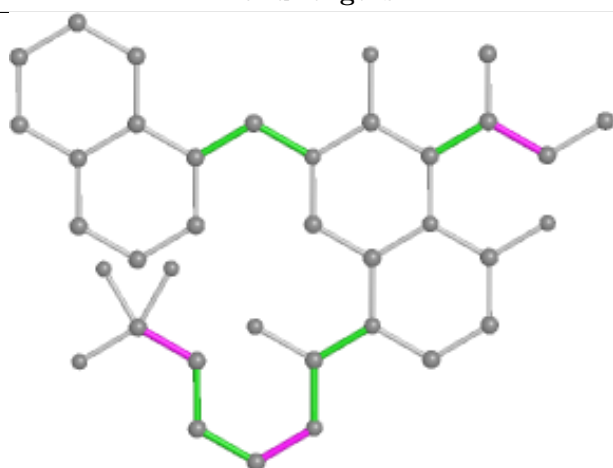
Ligand 9DF E 301



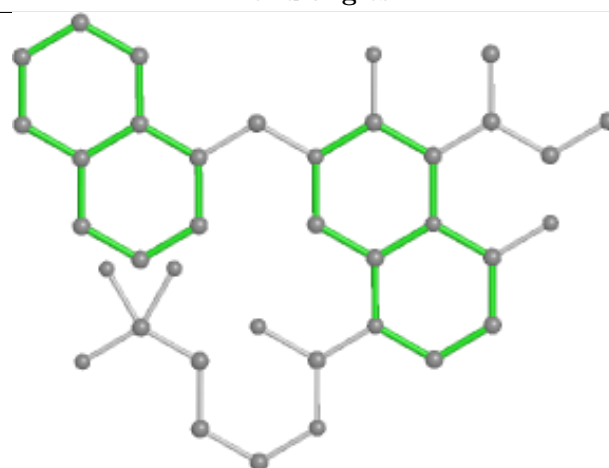
Bond lengths



Bond angles

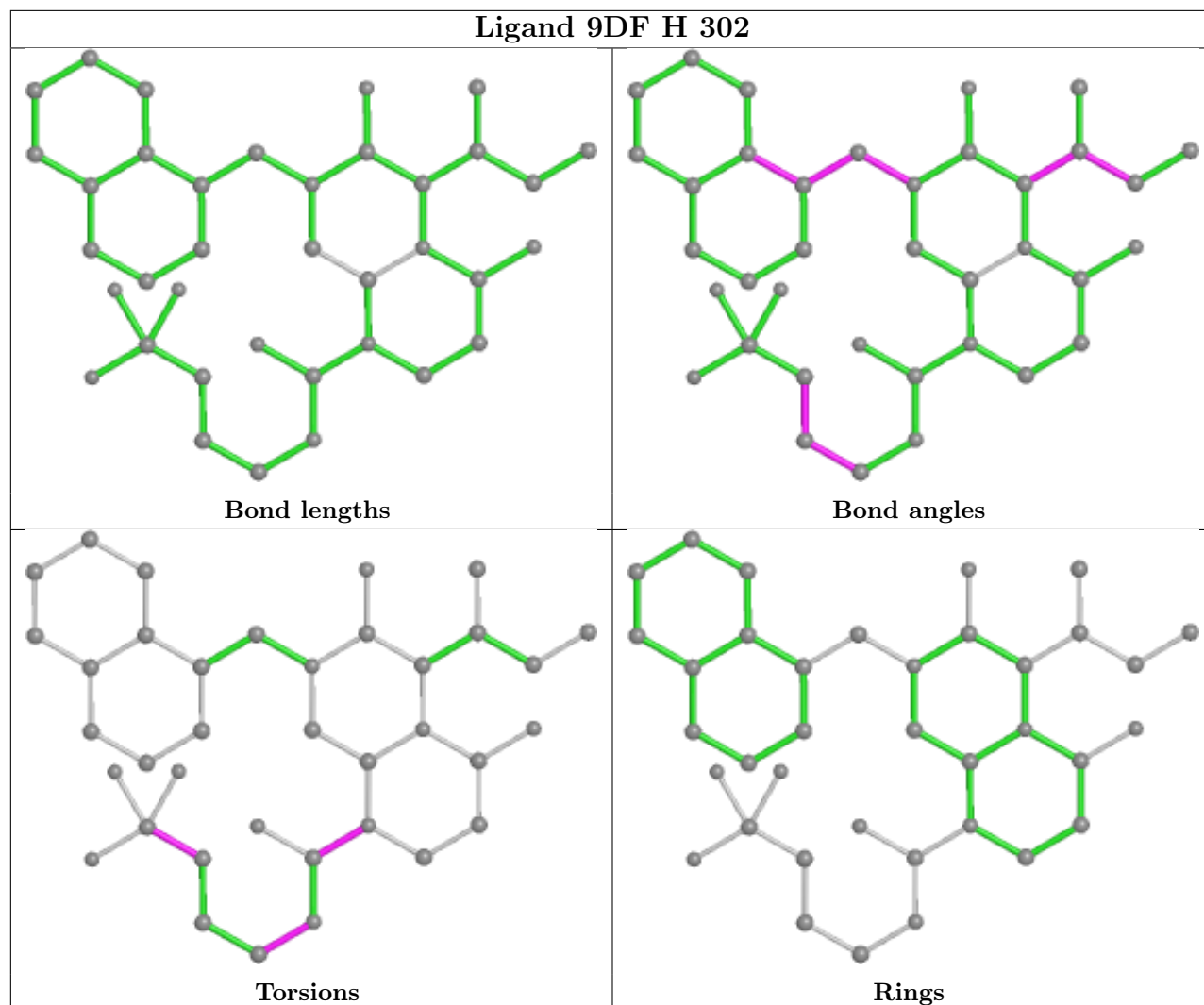


Torsions

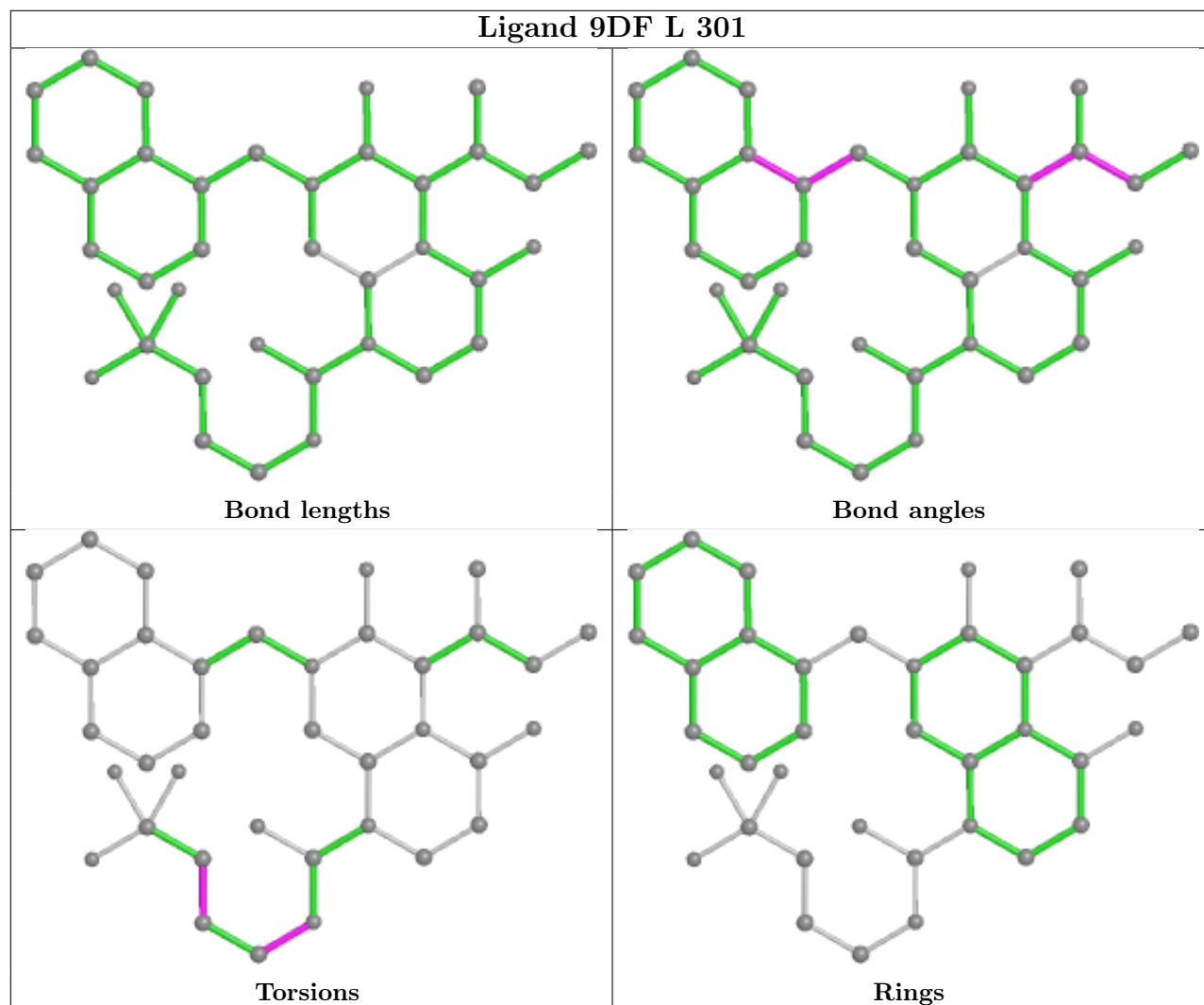


Rings

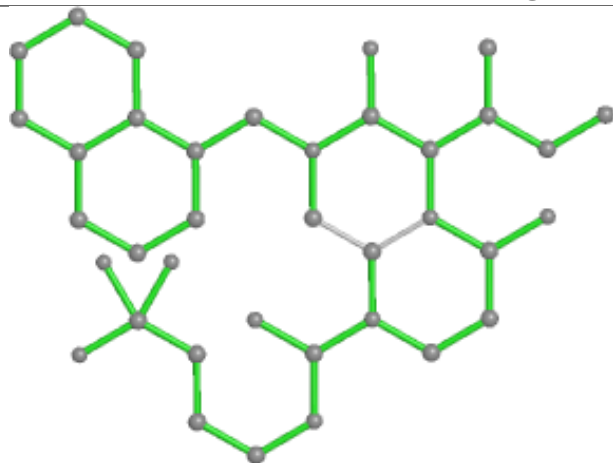
Ligand 9DF H 302



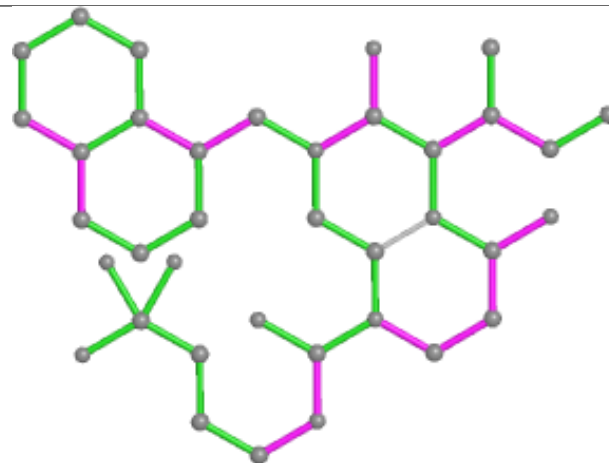
Ligand 9DF L 301



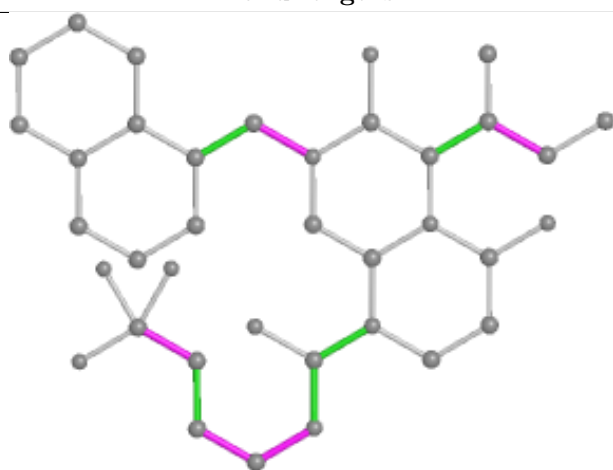
Ligand 9DF I 301



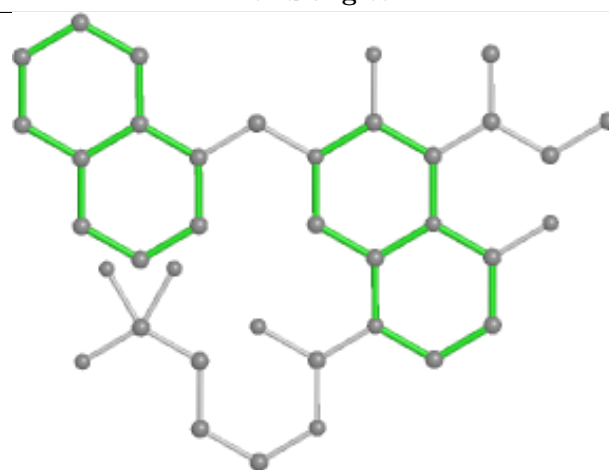
Bond lengths



Bond angles

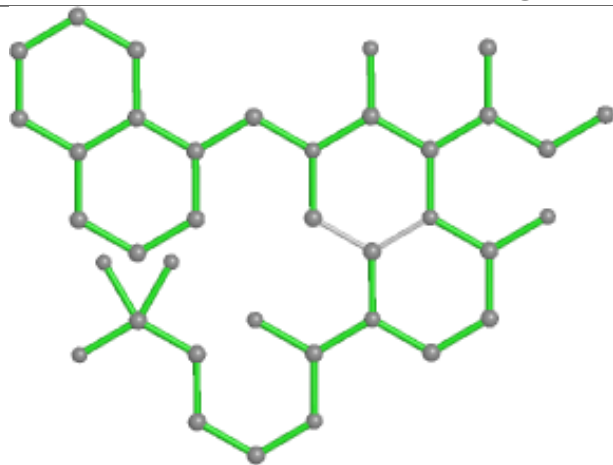


Torsions

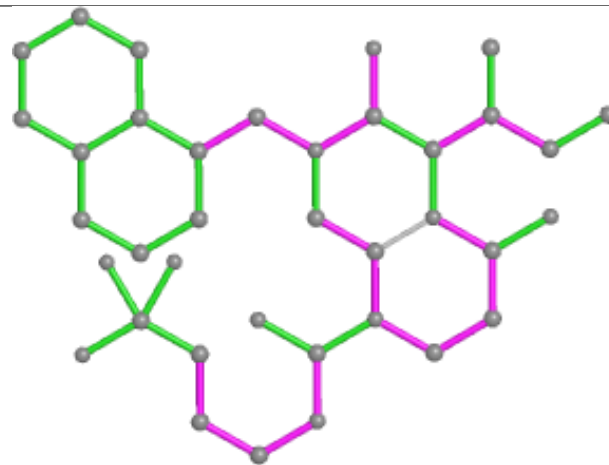


Rings

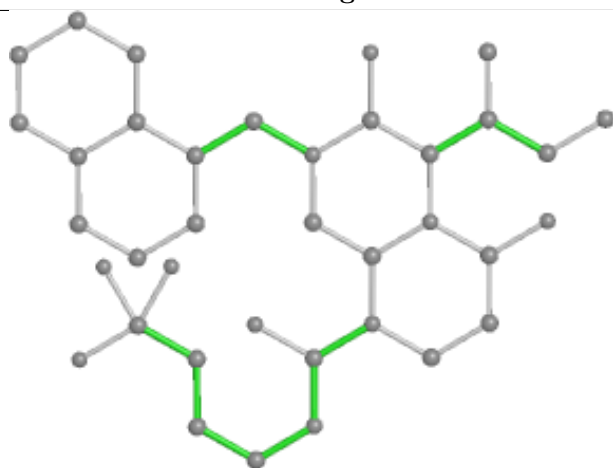
Ligand 9DF N 301



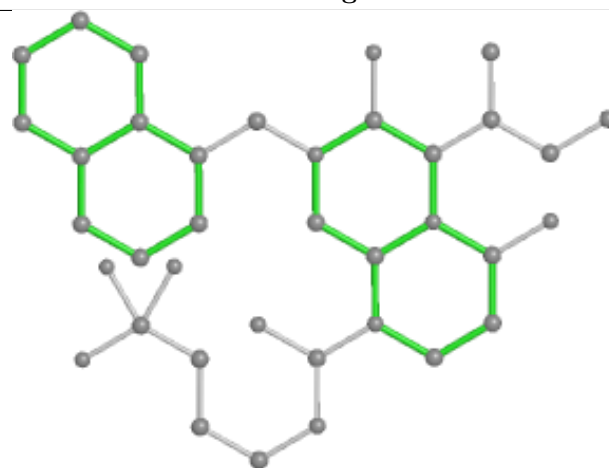
Bond lengths



Bond angles

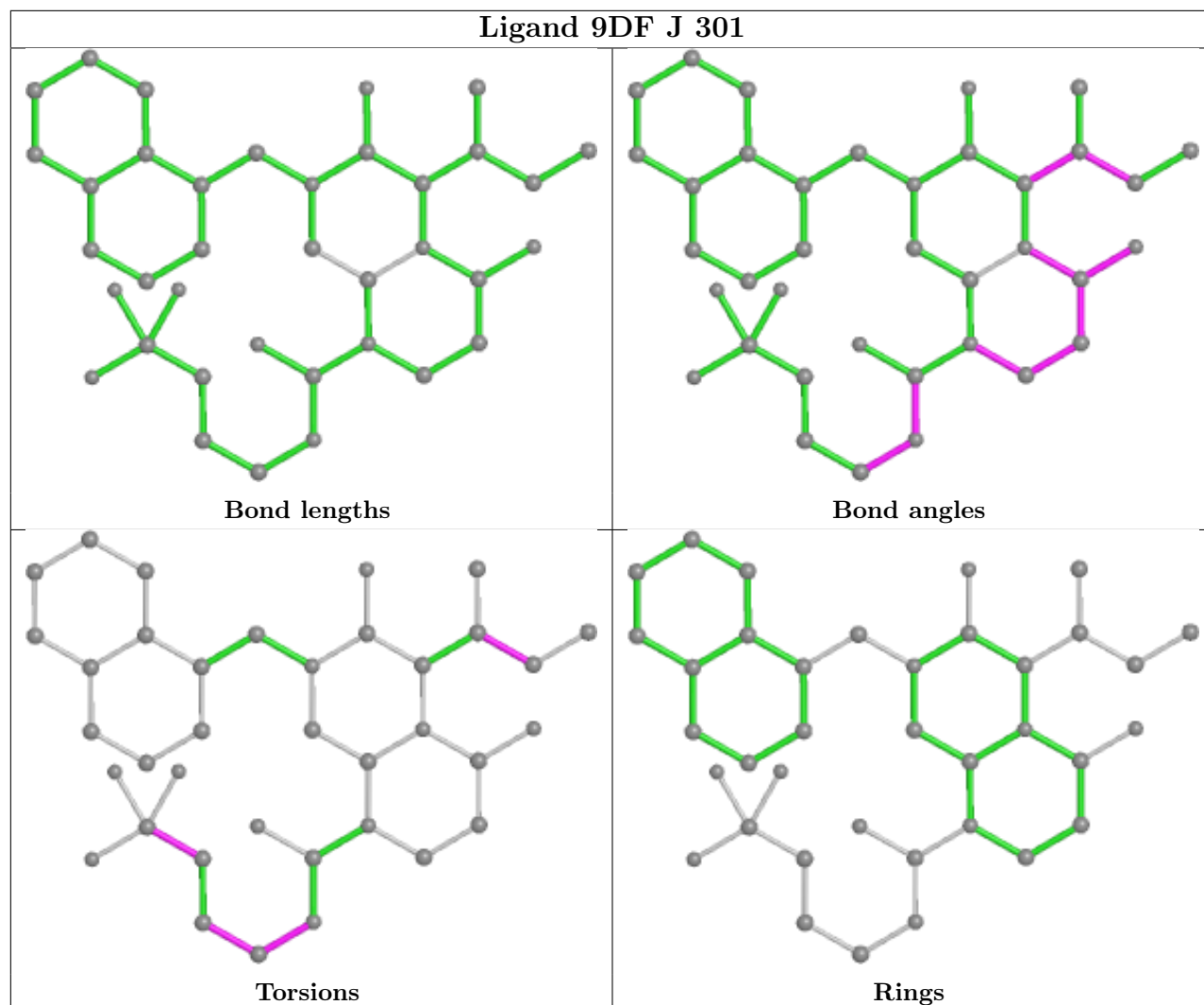


Torsions

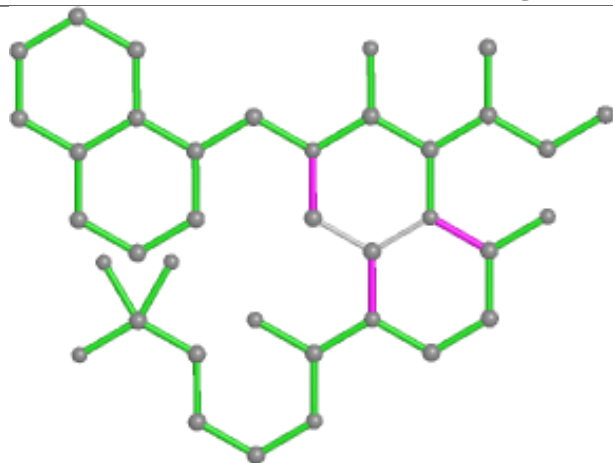


Rings

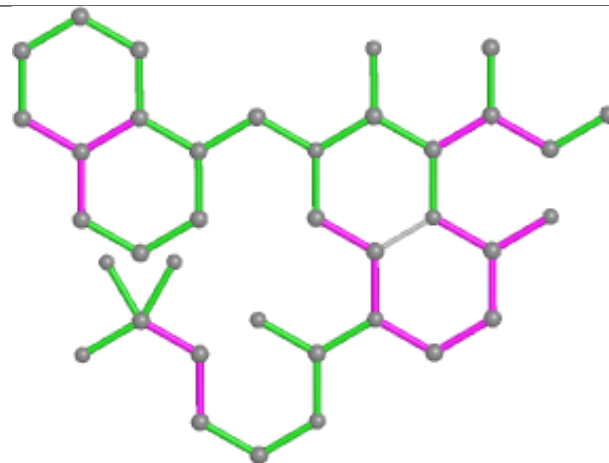
Ligand 9DF J 301



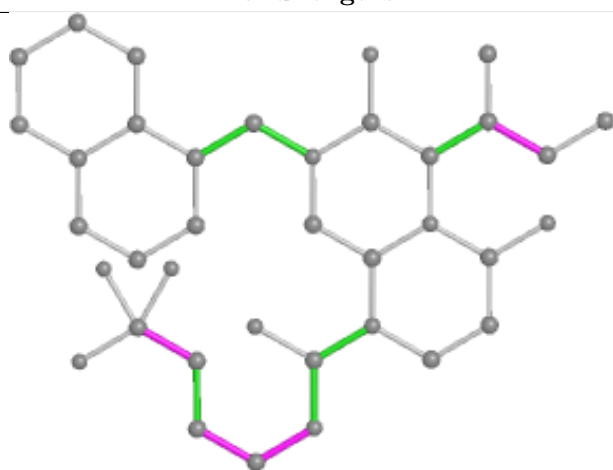
Ligand 9DF H 301



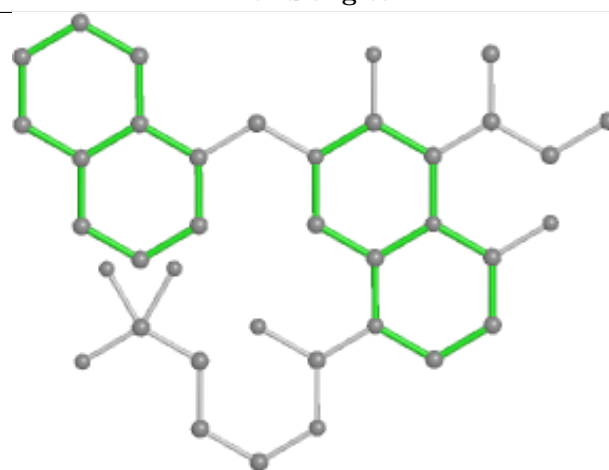
Bond lengths



Bond angles

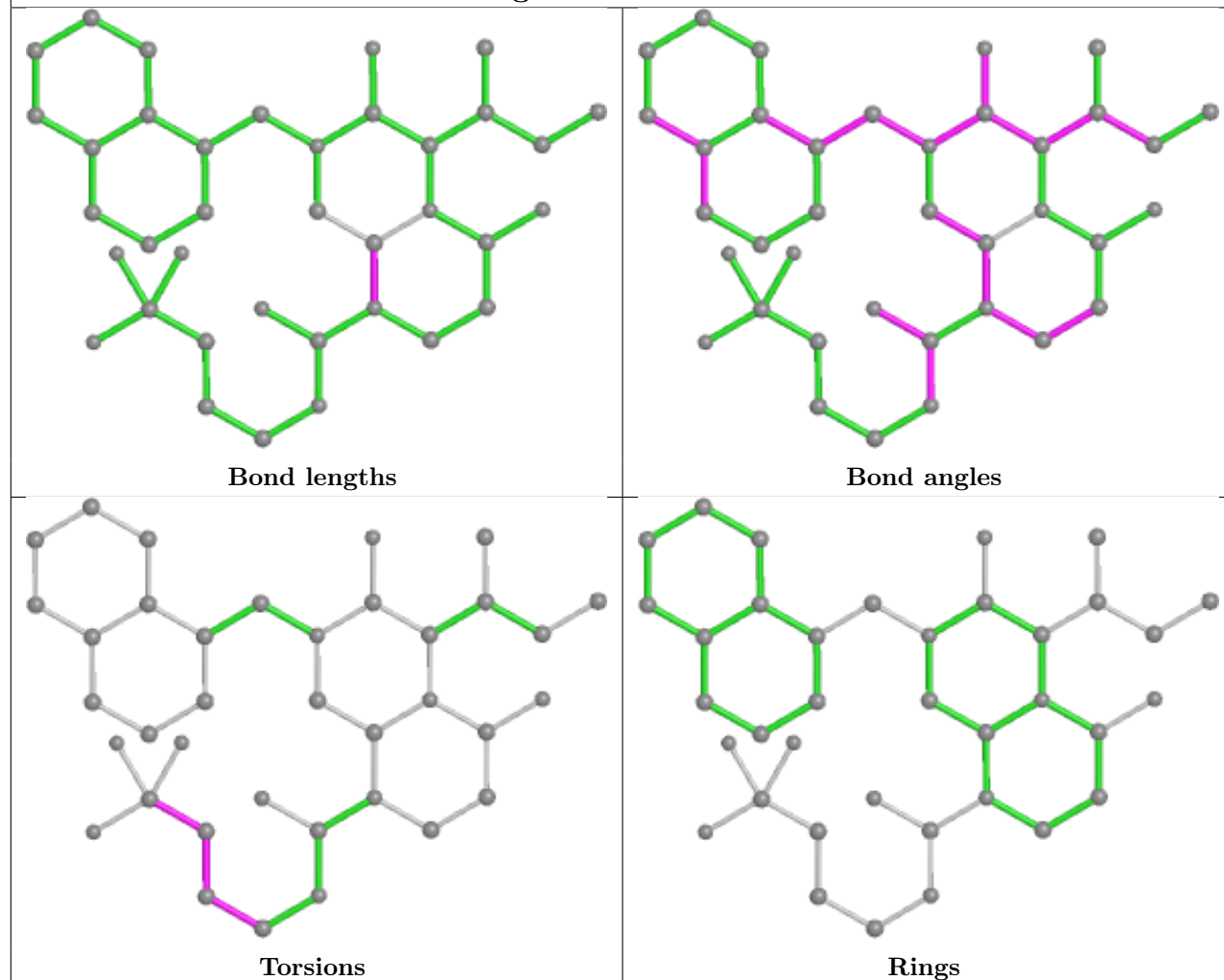


Torsions

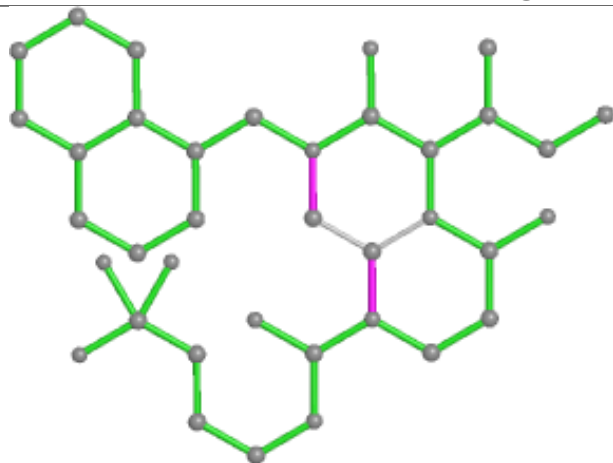


Rings

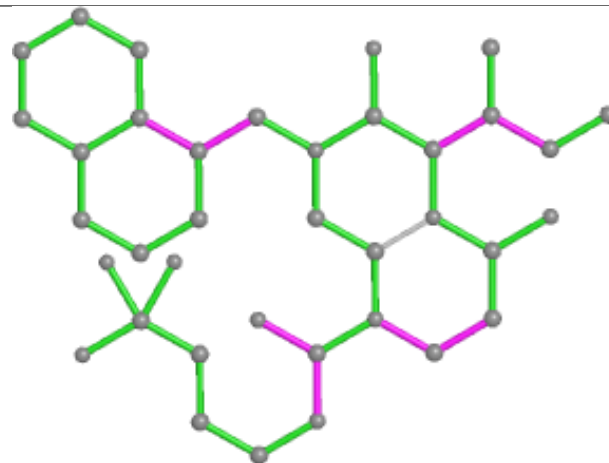
Ligand 9DF K 301



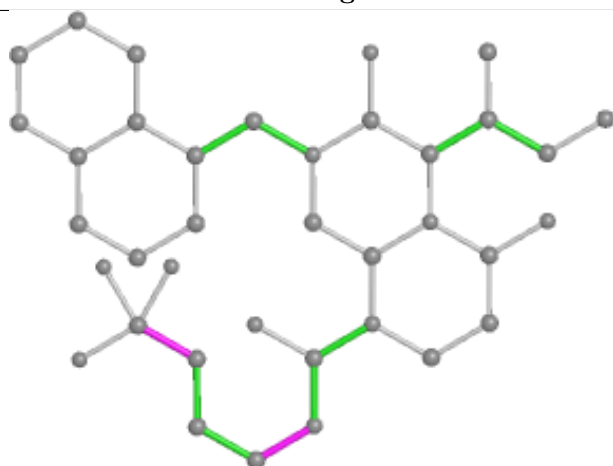
Ligand 9DF C 302



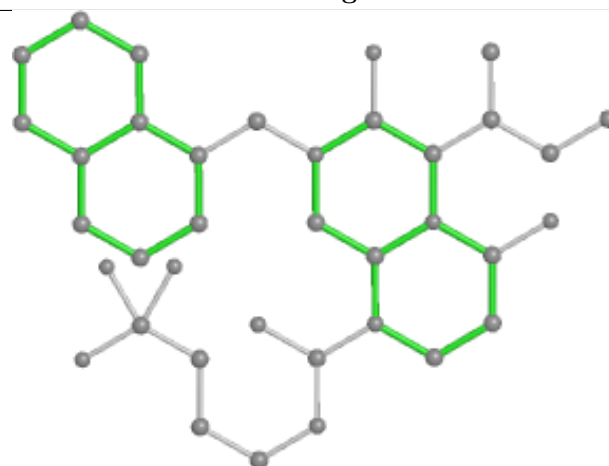
Bond lengths



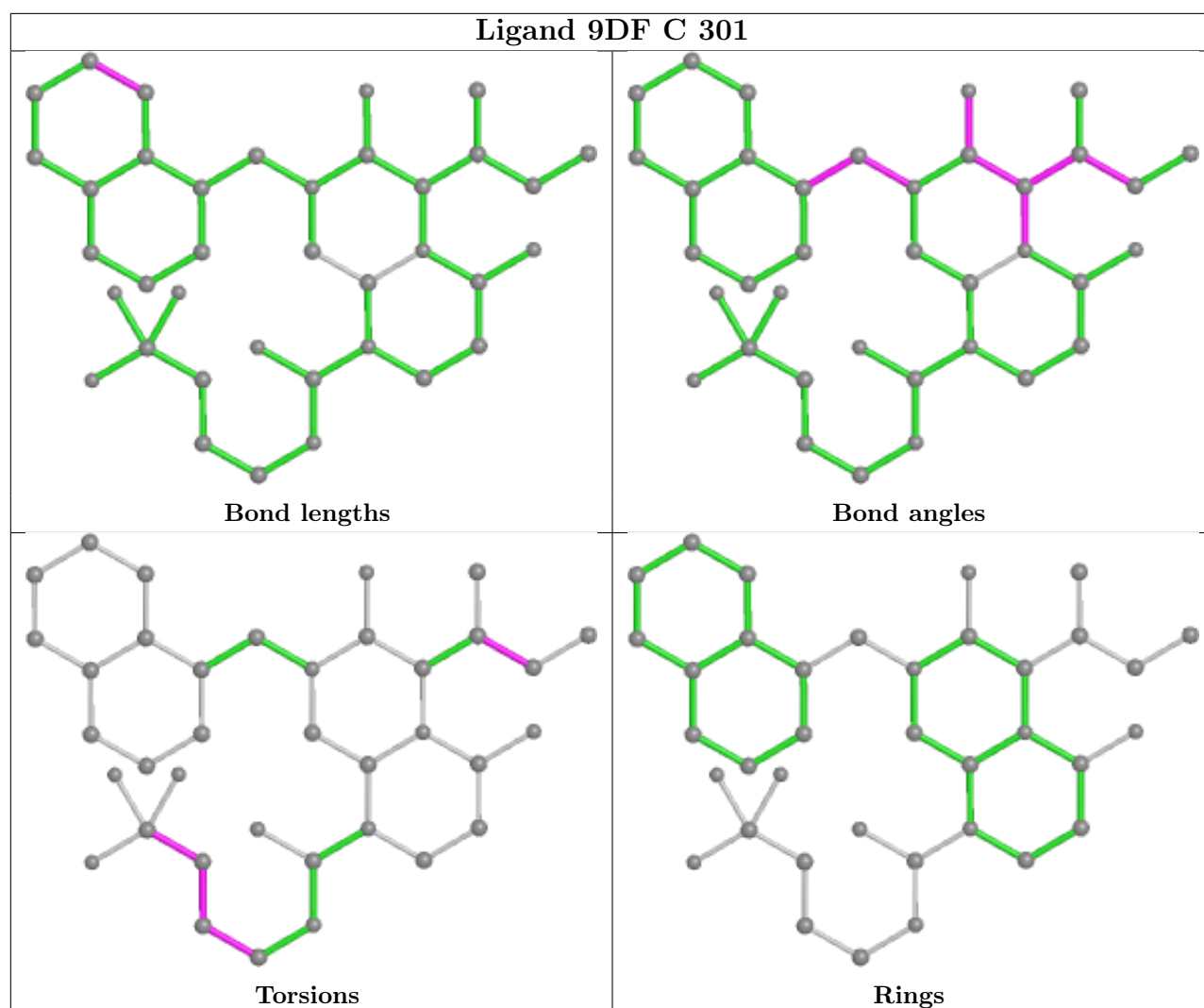
Bond angles



Torsions



Rings



5.7 Other polymers [i](#)

There are no such residues in this entry.

5.8 Polymer linkage issues [i](#)

There are no chain breaks in this entry.

6 Fit of model and data ⓘ

6.1 Protein, DNA and RNA chains ⓘ

In the following table, the column labelled ‘#RSRZ > 2’ contains the number (and percentage) of RSRZ outliers, followed by percent RSRZ outliers for the chain as percentile scores relative to all X-ray entries and entries of similar resolution. The OWAB column contains the minimum, median, 95th percentile and maximum values of the occupancy-weighted average B-factor per residue. The column labelled ‘Q < 0.9’ lists the number of (and percentage) of residues with an average occupancy less than 0.9.

Mol	Chain	Analysed	<RSRZ>	#RSRZ>2	OWAB(Å ²)	Q<0.9
1	A	170/221 (76%)	0.27	4 (2%) 59 65	36, 51, 79, 114	0
1	B	172/221 (77%)	0.31	5 (2%) 51 59	38, 54, 76, 93	0
1	C	170/221 (76%)	0.22	7 (4%) 37 45	32, 47, 73, 107	0
1	D	171/221 (77%)	0.16	1 (0%) 89 91	28, 42, 61, 84	0
1	E	172/221 (77%)	0.29	4 (2%) 60 67	36, 51, 76, 92	0
1	F	173/221 (78%)	0.52	5 (2%) 51 59	38, 54, 77, 93	0
1	G	171/221 (77%)	0.31	8 (4%) 31 38	37, 52, 73, 101	0
1	H	172/221 (77%)	0.24	4 (2%) 60 67	33, 47, 69, 95	0
1	I	177/221 (80%)	0.27	5 (2%) 53 61	37, 54, 85, 102	0
1	J	171/221 (77%)	0.39	6 (3%) 44 51	43, 58, 81, 100	0
1	K	171/221 (77%)	0.41	9 (5%) 26 33	43, 58, 80, 125	0
1	L	170/221 (76%)	0.25	5 (2%) 51 59	35, 51, 78, 120	0
1	M	169/221 (76%)	0.17	3 (1%) 68 74	28, 41, 62, 81	0
1	N	170/221 (76%)	0.28	5 (2%) 51 59	27, 38, 57, 108	0
All	All	2399/3094 (77%)	0.29	71 (2%) 50 58	27, 51, 76, 125	0

All (71) RSRZ outliers are listed below:

Mol	Chain	Res	Type	RSRZ
1	N	58	LEU	7.8
1	A	249	PRO	7.5
1	I	72	ALA	6.3
1	C	62	VAL	6.1
1	N	73	TYR	5.5
1	L	57	PRO	5.0
1	N	62	VAL	4.8
1	G	73	TYR	4.8

Continued on next page...

Continued from previous page...

Mol	Chain	Res	Type	RSRZ
1	F	118	TYR	4.2
1	K	58	LEU	4.0
1	G	62	VAL	3.8
1	E	72	ALA	3.7
1	N	61	ILE	3.6
1	K	245	LEU	3.5
1	B	118	TYR	3.4
1	D	73	TYR	3.3
1	M	73	TYR	3.3
1	M	118	TYR	3.3
1	G	61	ILE	3.3
1	B	72	ALA	3.3
1	L	248	PRO	3.3
1	K	140	LEU	3.2
1	H	72	ALA	3.2
1	H	180	PRO	3.1
1	N	59	ILE	3.1
1	F	63	VAL	3.1
1	J	62	VAL	3.1
1	H	63	VAL	3.0
1	H	73	TYR	3.0
1	C	58	LEU	2.9
1	G	249	PRO	2.9
1	M	198	ILE	2.8
1	J	73	TYR	2.6
1	E	63	VAL	2.6
1	F	72	ALA	2.6
1	J	143	ILE	2.6
1	K	61	ILE	2.6
1	E	180	PRO	2.5
1	K	247	HIS	2.5
1	G	58	LEU	2.5
1	G	63	VAL	2.4
1	C	59	ILE	2.4
1	K	177	ILE	2.4
1	L	73	TYR	2.4
1	J	138	TYR	2.4
1	B	62	VAL	2.3
1	L	247	HIS	2.3
1	K	246	VAL	2.3
1	G	180	PRO	2.3
1	G	217	LEU	2.3

Continued on next page...

Continued from previous page...

Mol	Chain	Res	Type	RSRZ
1	I	98	LEU	2.3
1	C	61	ILE	2.3
1	I	146	TRP	2.3
1	K	57	PRO	2.3
1	J	198	ILE	2.3
1	F	244	VAL	2.2
1	I	64	GLU	2.2
1	C	245	LEU	2.2
1	B	63	VAL	2.2
1	K	73	TYR	2.2
1	F	246	VAL	2.1
1	C	60	PRO	2.1
1	B	105	PHE	2.1
1	C	143	ILE	2.1
1	A	58	LEU	2.1
1	A	217	LEU	2.0
1	L	61	ILE	2.0
1	I	71	ARG	2.0
1	J	194	GLN	2.0
1	A	245	LEU	2.0
1	E	107	GLN	2.0

6.2 Non-standard residues in protein, DNA, RNA chains ⓘ

There are no non-standard protein/DNA/RNA residues in this entry.

6.3 Carbohydrates ⓘ

There are no monosaccharides in this entry.

6.4 Ligands ⓘ

In the following table, the Atoms column lists the number of modelled atoms in the group and the number defined in the chemical component dictionary. The B-factors column lists the minimum, median, 95th percentile and maximum values of B factors of atoms in the group. The column labelled 'Q< 0.9' lists the number of atoms with occupancy less than 0.9.

Mol	Type	Chain	Res	Atoms	RSCC	RSR	B-factors(\AA^2)	Q<0.9
3	MG	N	302	1/1	0.81	0.09	57,57,57,57	0
2	9DF	J	301	37/37	0.85	0.20	66,79,111,123	0

Continued on next page...

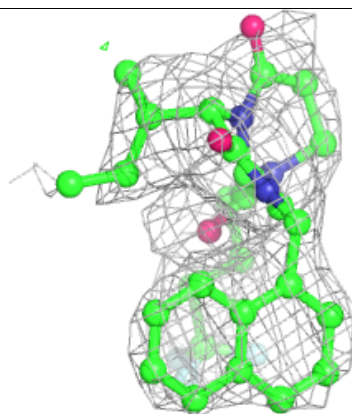
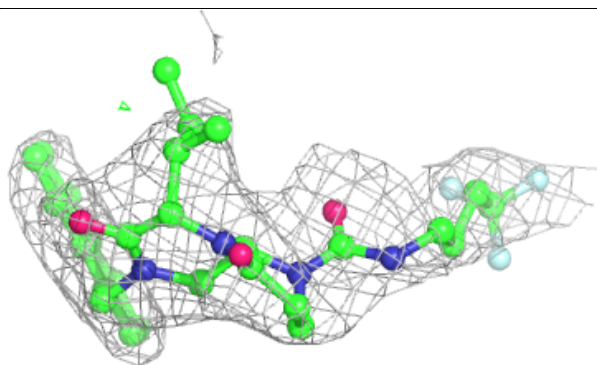
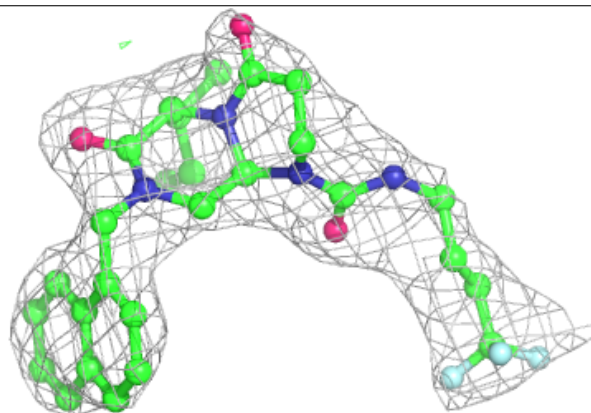
Continued from previous page...

Mol	Type	Chain	Res	Atoms	RSCC	RSR	B-factors(\AA^2)	Q<0.9
2	9DF	L	301	37/37	0.85	0.42	61,87,115,123	0
2	9DF	A	302	37/37	0.85	0.27	74,106,155,158	0
2	9DF	I	301	37/37	0.86	0.21	76,93,117,129	0
2	9DF	K	301	37/37	0.86	0.22	71,77,137,144	0
2	9DF	E	301	37/37	0.88	0.26	68,79,120,125	0
2	9DF	C	301	37/37	0.89	0.18	44,60,87,94	0
2	9DF	C	302	37/37	0.90	0.20	59,70,117,124	0
2	9DF	D	301	37/37	0.90	0.14	57,65,90,95	0
2	9DF	H	302	37/37	0.92	0.13	57,63,92,97	0
2	9DF	A	301	37/37	0.93	0.18	47,65,87,94	0
2	9DF	N	301	37/37	0.94	0.15	40,45,64,79	0
2	9DF	F	301	37/37	0.94	0.18	50,63,85,100	0
2	9DF	H	301	37/37	0.95	0.14	41,52,74,75	0

The following is a graphical depiction of the model fit to experimental electron density of all instances of the Ligand of Interest. In addition, ligands with molecular weight > 250 and outliers as shown on the geometry validation Tables will also be included. Each fit is shown from different orientation to approximate a three-dimensional view.

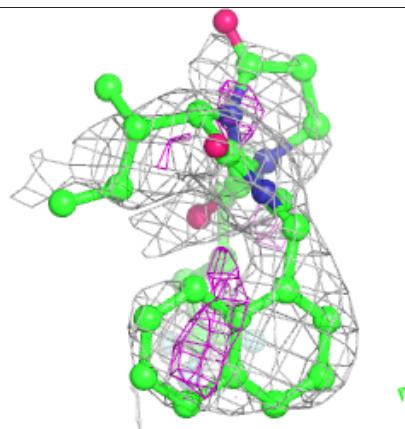
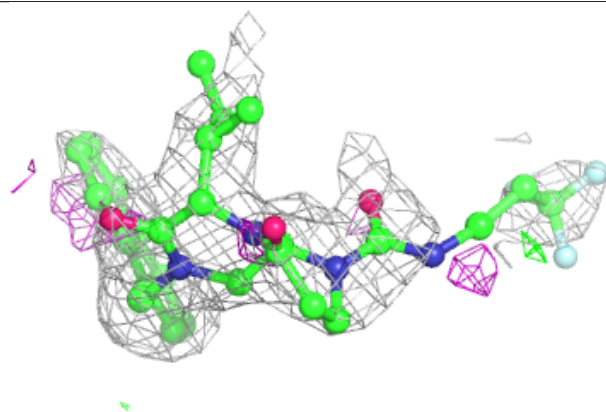
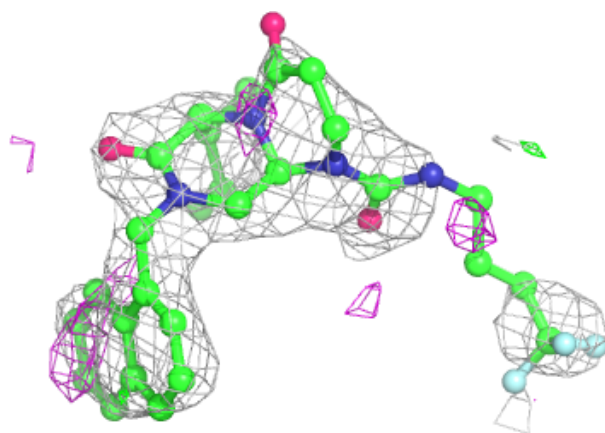
Electron density around 9DF J 301:

2mF_o-DF_c (at 0.7 rmsd) in gray
mF_o-DF_c (at 3 rmsd) in purple (negative)
and green (positive)



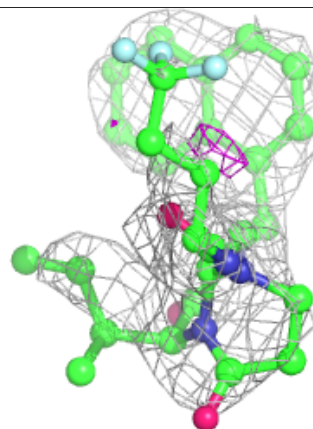
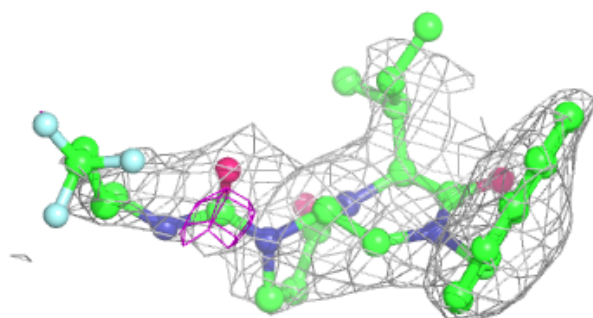
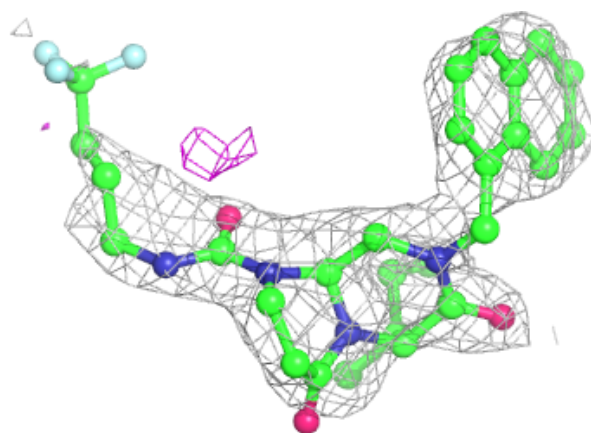
Electron density around 9DF L 301:

$2mF_o-DF_c$ (at 0.7 rmsd) in gray
 mF_o-DF_c (at 3 rmsd) in purple (negative)
and green (positive)



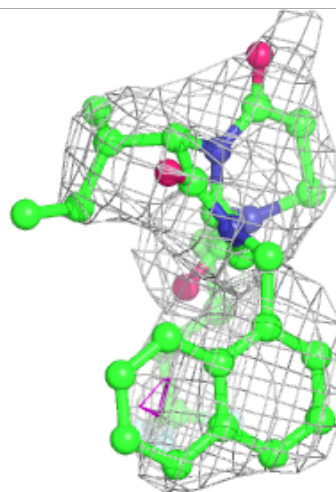
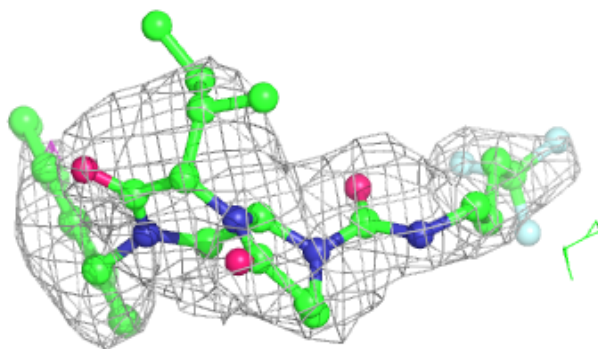
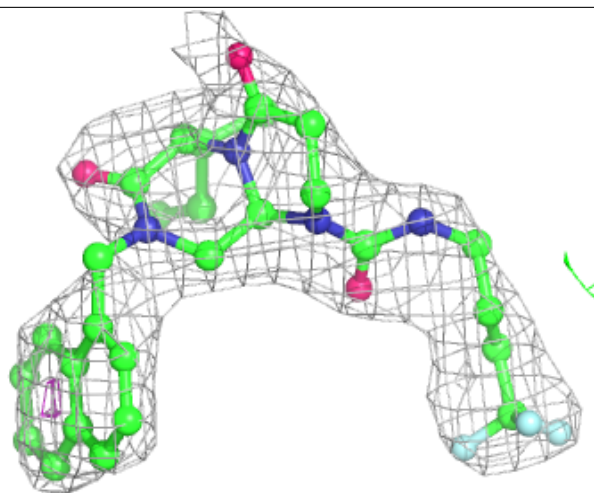
Electron density around 9DF A 302:

$2mF_o-DF_c$ (at 0.7 rmsd) in gray
 mF_o-DF_c (at 3 rmsd) in purple (negative)
and green (positive)



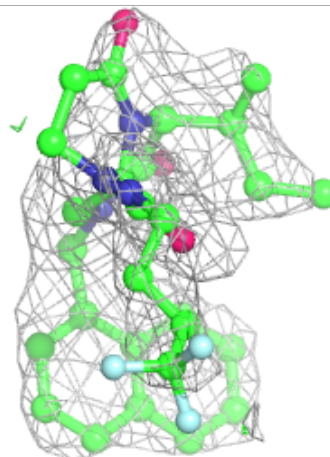
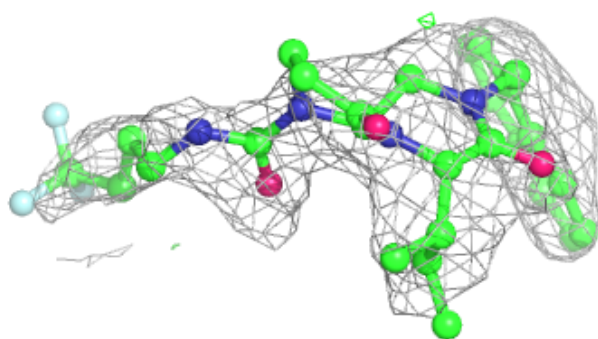
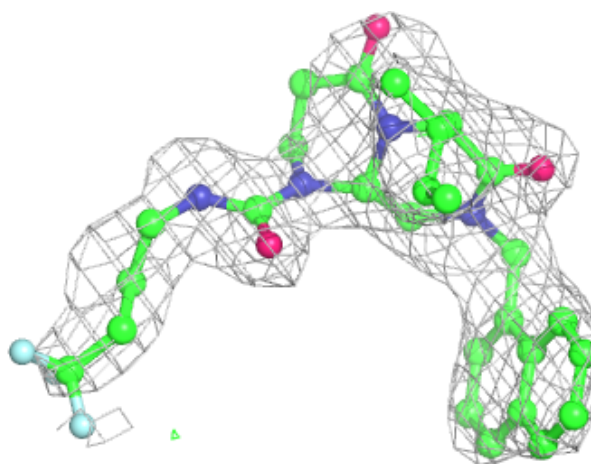
Electron density around 9DF I 301:

$2mF_o-DF_c$ (at 0.7 rmsd) in gray
 mF_o-DF_c (at 3 rmsd) in purple (negative)
and green (positive)



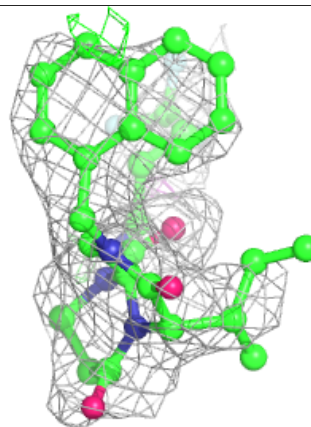
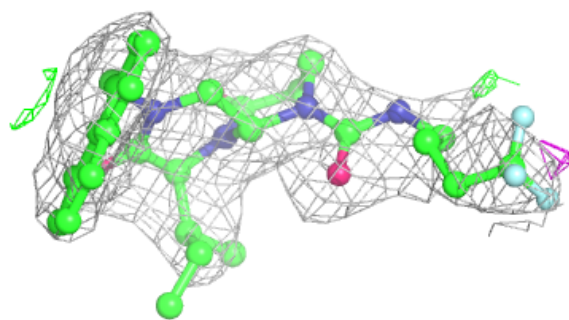
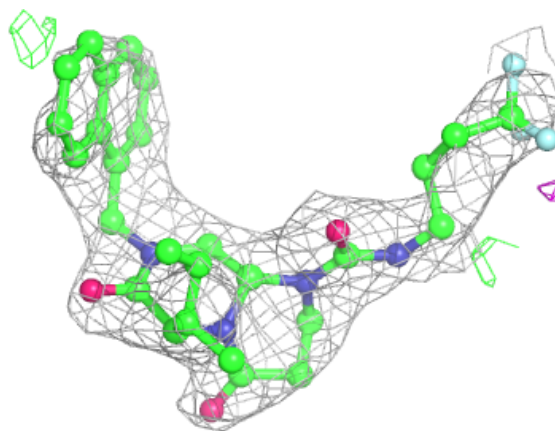
Electron density around 9DF K 301:

$2mF_o-DF_c$ (at 0.7 rmsd) in gray
 mF_o-DF_c (at 3 rmsd) in purple (negative)
and green (positive)



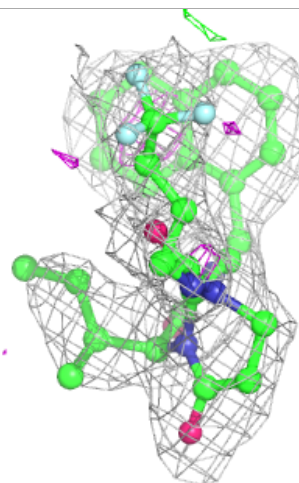
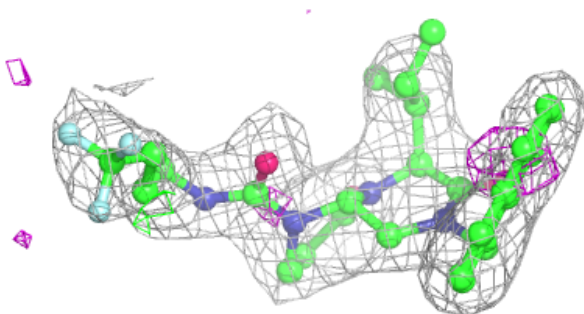
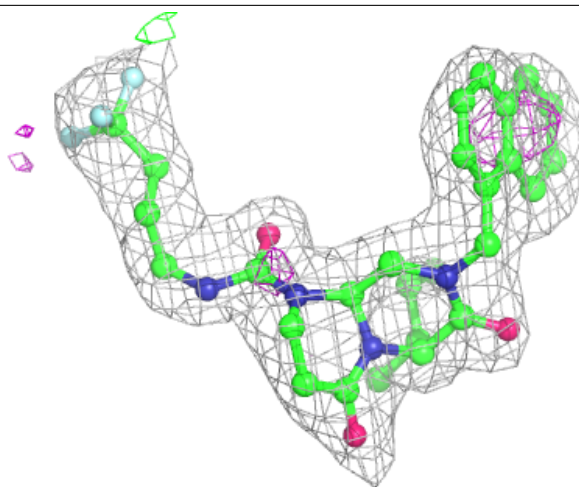
Electron density around 9DF E 301:

$2mF_o-DF_c$ (at 0.7 rmsd) in gray
 mF_o-DF_c (at 3 rmsd) in purple (negative)
and green (positive)



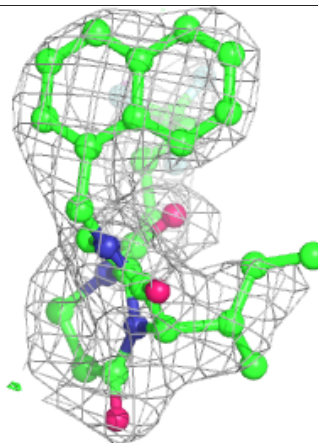
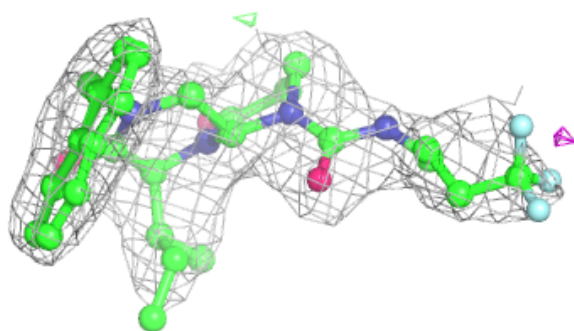
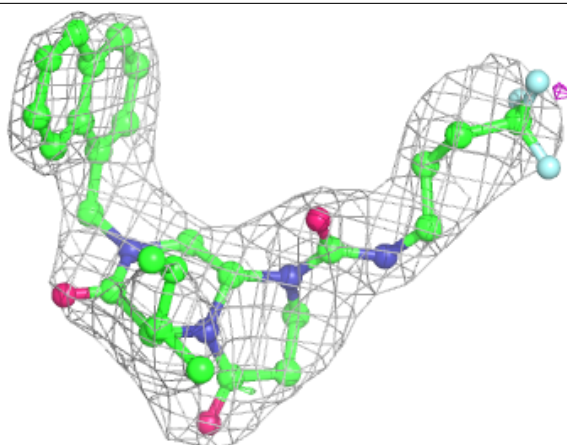
Electron density around 9DF C 301:

$2mF_o-DF_c$ (at 0.7 rmsd) in gray
 mF_o-DF_c (at 3 rmsd) in purple (negative)
and green (positive)



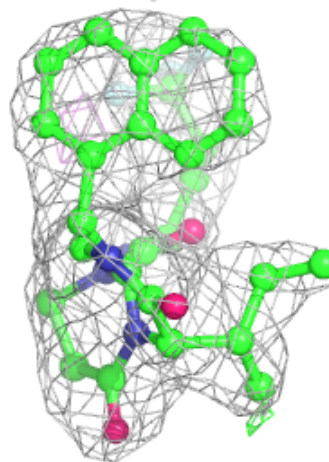
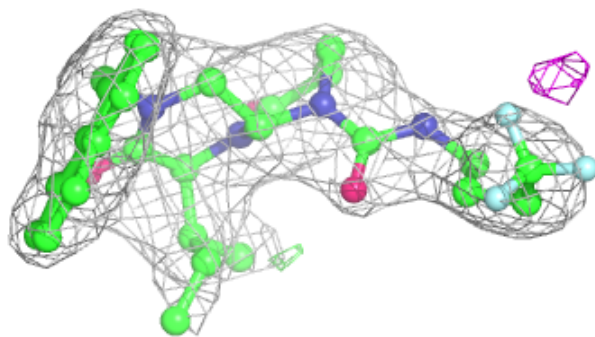
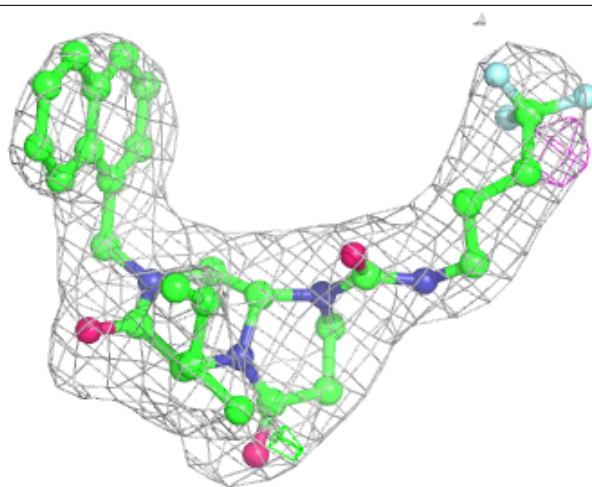
Electron density around 9DF C 302:

$2mF_o - DF_c$ (at 0.7 rmsd) in gray
 $mF_o - DF_c$ (at 3 rmsd) in purple (negative)
and green (positive)



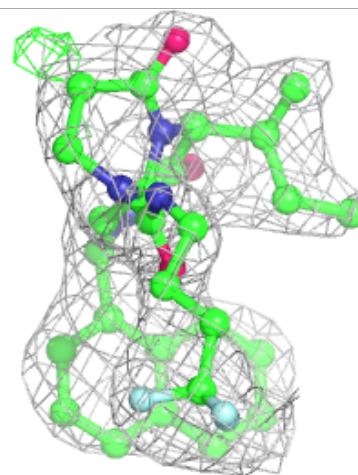
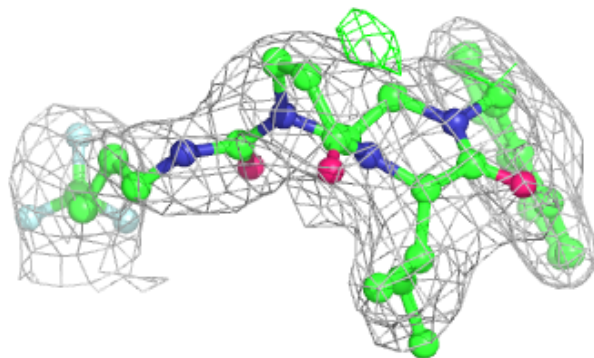
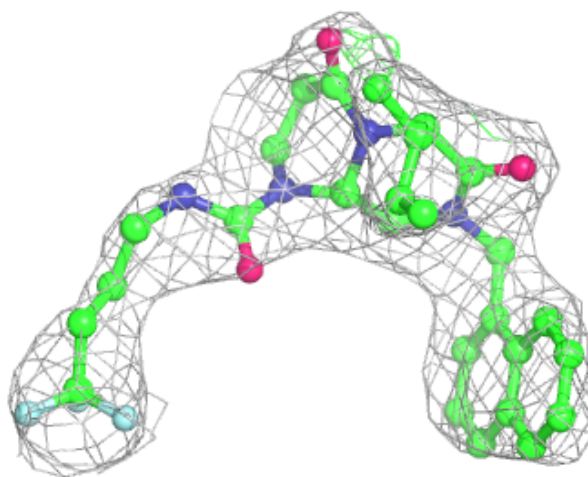
Electron density around 9DF D 301:

$2mF_o-DF_c$ (at 0.7 rmsd) in gray
 mF_o-DF_c (at 3 rmsd) in purple (negative)
and green (positive)



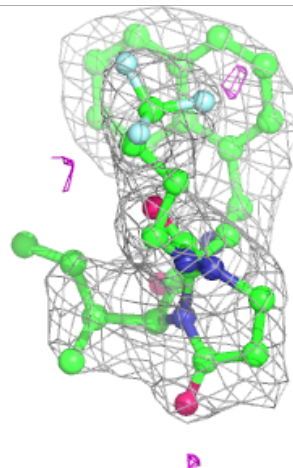
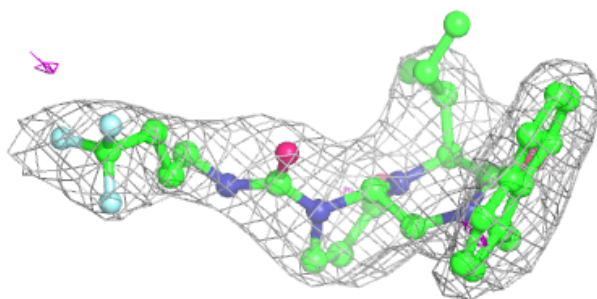
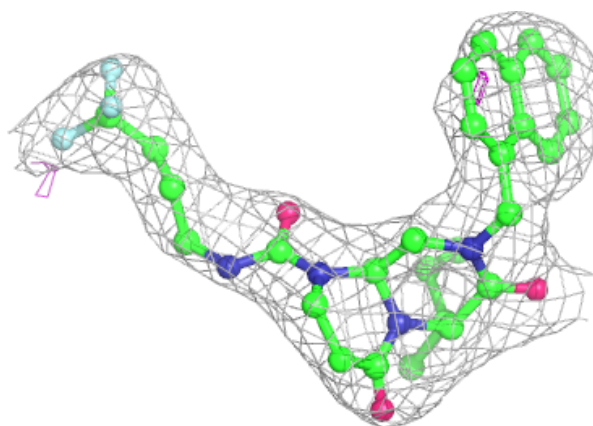
Electron density around 9DF H 302:

$2mF_o-DF_c$ (at 0.7 rmsd) in gray
 mF_o-DF_c (at 3 rmsd) in purple (negative)
and green (positive)



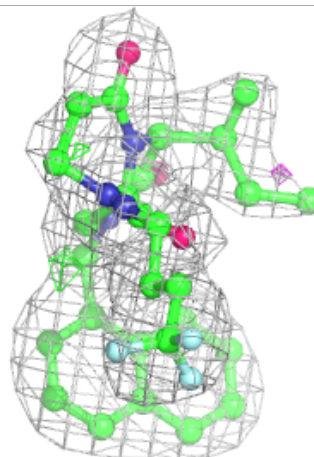
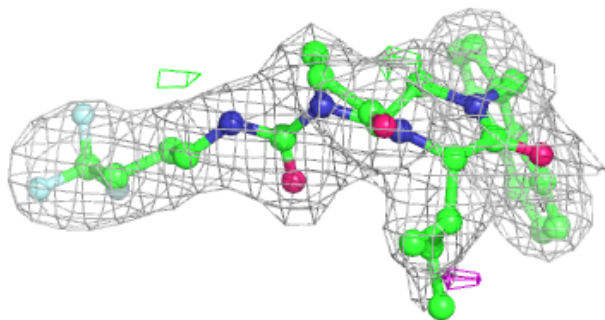
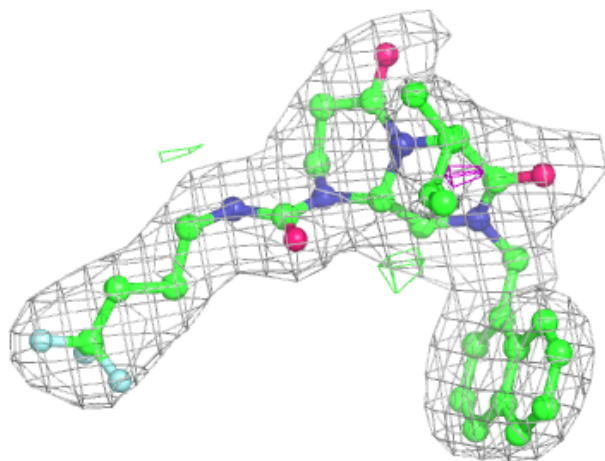
Electron density around 9DF A 301:

$2mF_o-DF_c$ (at 0.7 rmsd) in gray
 mF_o-DF_c (at 3 rmsd) in purple (negative)
and green (positive)



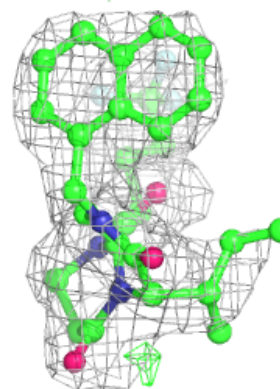
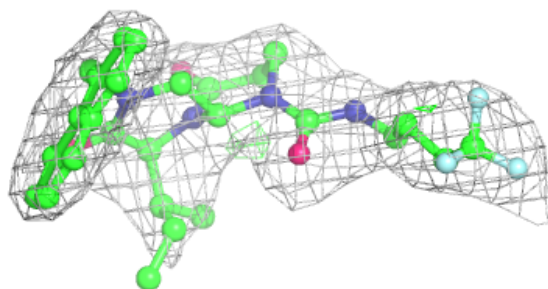
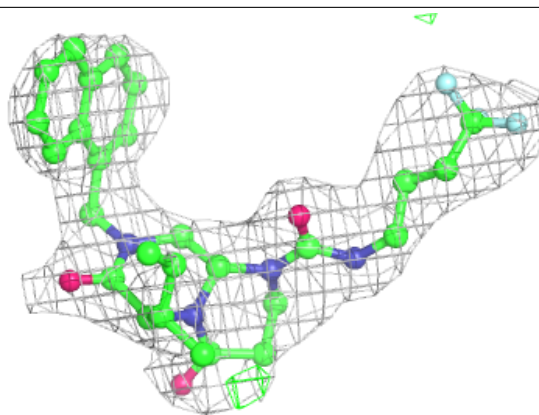
Electron density around 9DF N 301:

$2mF_o-DF_c$ (at 0.7 rmsd) in gray
 mF_o-DF_c (at 3 rmsd) in purple (negative)
and green (positive)



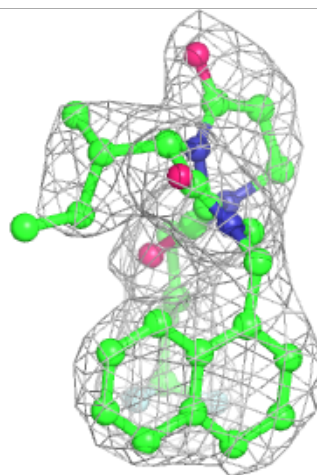
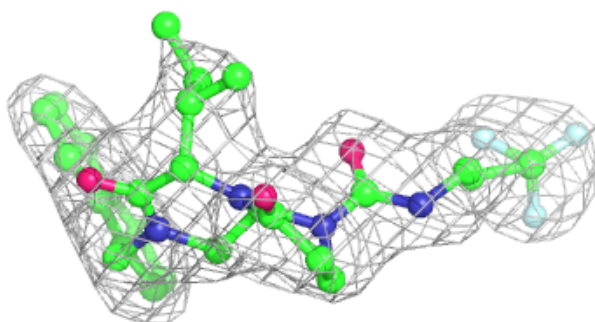
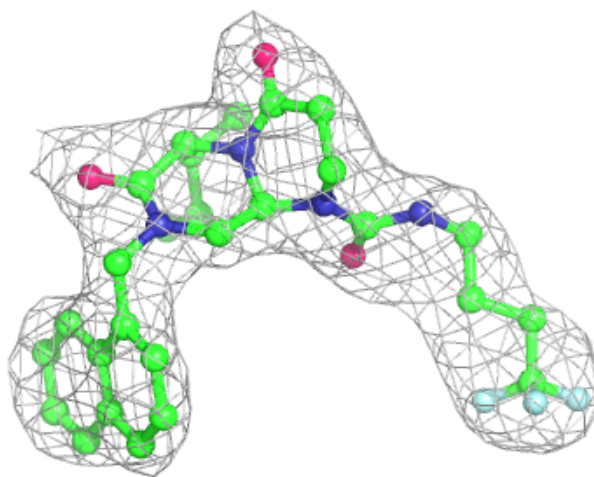
Electron density around 9DF F 301:

$2mF_o - DF_c$ (at 0.7 rmsd) in gray
 $mF_o - DF_c$ (at 3 rmsd) in purple (negative)
and green (positive)



Electron density around 9DF H 301:

$2mF_o-DF_c$ (at 0.7 rmsd) in gray
 mF_o-DF_c (at 3 rmsd) in purple (negative)
and green (positive)



6.5 Other polymers [i](#)

There are no such residues in this entry.