



Full wwPDB X-ray Structure Validation Report ⓘ

Aug 8, 2020 – 11:32 AM BST

PDB ID : 4WI6
Title : Structural mapping of the human IgG1 binding site for FcRn: hu3S193 Fc mutation N434A
Authors : Farrugia, W.; Burvenich, I.J.G.; Scott, A.M.; Ramsland, P.A.
Deposited on : 2014-09-25
Resolution : 2.20 Å(reported)

This is a Full wwPDB X-ray Structure Validation Report for a publicly released PDB entry.

We welcome your comments at validation@mail.wwpdb.org

A user guide is available at

<https://www.wwpdb.org/validation/2017/XrayValidationReportHelp>

with specific help available everywhere you see the ⓘ symbol.

The following versions of software and data (see [references ⓘ](#)) were used in the production of this report:

MolProbity : 4.02b-467
Mogul : 1.8.5 (274361), CSD as541be (2020)
Xtriage (Phenix) : 1.13
EDS : 2.13.1
Percentile statistics : 20191225.v01 (using entries in the PDB archive December 25th 2019)
Refmac : 5.8.0158
CCP4 : 7.0.044 (Gargrove)
Ideal geometry (proteins) : Engh & Huber (2001)
Ideal geometry (DNA, RNA) : Parkinson et al. (1996)
Validation Pipeline (wwPDB-VP) : 2.13.1

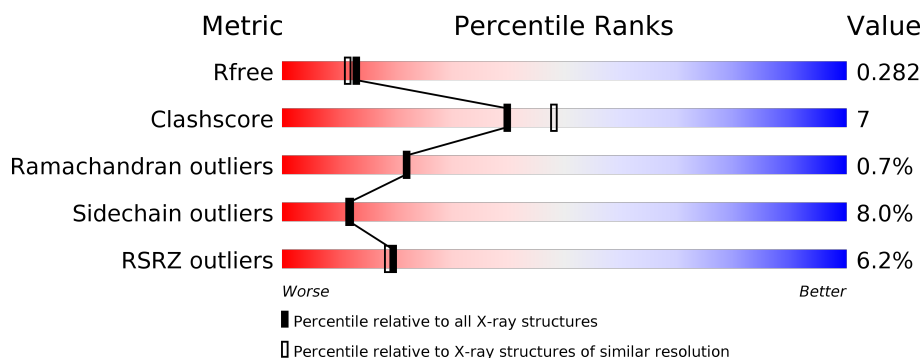
1 Overall quality at a glance

The following experimental techniques were used to determine the structure:

X-RAY DIFFRACTION

The reported resolution of this entry is 2.20 Å.

Percentile scores (ranging between 0-100) for global validation metrics of the entry are shown in the following graphic. The table shows the number of entries on which the scores are based.



Metric	Whole archive (#Entries)	Similar resolution (#Entries, resolution range(Å))
R_{free}	130704	4898 (2.20-2.20)
Clashscore	141614	5594 (2.20-2.20)
Ramachandran outliers	138981	5503 (2.20-2.20)
Sidechain outliers	138945	5504 (2.20-2.20)
RSRZ outliers	127900	4800 (2.20-2.20)

The table below summarises the geometric issues observed across the polymeric chains and their fit to the electron density. The red, orange, yellow and green segments on the lower bar indicate the fraction of residues that contain outliers for ≥ 3 , 2, 1 and 0 types of geometric quality criteria respectively. A grey segment represents the fraction of residues that are not modelled. The numeric value for each fraction is indicated below the corresponding segment, with a dot representing fractions $\leq 5\%$. The upper red bar (where present) indicates the fraction of residues that have poor fit to the electron density. The numeric value is given above the bar.

Mol	Chain	Length	Quality of chain
1	A	208	<div> <div>%</div> <div> <div></div> <div>75%</div> <div>21%</div> <div>..</div> </div> </div>
1	B	208	<div> <div>11%</div> <div> <div></div> <div>75%</div> <div>22%</div> <div>..</div> </div> </div>
2	C	8	<div> <div>25%</div> <div>63%</div> <div>13%</div> </div>
2	D	8	<div> <div>25%</div> <div>75%</div> </div>

2 Entry composition [i](#)

There are 4 unique types of molecules in this entry. The entry contains 3646 atoms, of which 0 are hydrogens and 0 are deuteriums.

In the tables below, the ZeroOcc column contains the number of atoms modelled with zero occupancy, the AltConf column contains the number of residues with at least one atom in alternate conformation and the Trace column contains the number of residues modelled with at most 2 atoms.

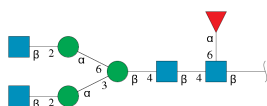
- Molecule 1 is a protein called Ig gamma-1 chain C region.

Mol	Chain	Residues	Atoms					ZeroOcc	AltConf	Trace
1	A	208	Total	C	N	O	S	0	0	0
			1661	1058	279	318	6			
1	B	208	Total	C	N	O	S	0	0	0
			1661	1058	279	318	6			

There are 2 discrepancies between the modelled and reference sequences:

Chain	Residue	Modelled	Actual	Comment	Reference
A	434	ALA	ASN	engineered mutation	UNP P01857
B	434	ALA	ASN	engineered mutation	UNP P01857

- Molecule 2 is an oligosaccharide called 2-acetamido-2-deoxy-beta-D-glucopyranose-(1-2)-alpha-D-mannopyranose-(1-3)-[2-acetamido-2-deoxy-beta-D-glucopyranose-(1-2)-alpha-D-mannopyranose-(1-6)]beta-D-mannopyranose-(1-4)-2-acetamido-2-deoxy-beta-D-glucopyranose-(1-4)-[alpha-L-fucopyranose-(1-6)]2-acetamido-2-deoxy-beta-D-glucopyranose.



Mol	Chain	Residues	Atoms				ZeroOcc	AltConf	Trace
2	C	8	Total	C	N	O	0	0	0
			99	56	4	39			
2	D	8	Total	C	N	O	0	0	0
			99	56	4	39			

- Molecule 3 is 1,2-ETHANEDIOL (three-letter code: EDO) (formula: C₂H₆O₂).



Mol	Chain	Residues	Atoms			ZeroOcc	AltConf
3	A	1	Total	C	O	0	0
			4	2	2		
3	B	1	Total	C	O	0	0
			4	2	2		

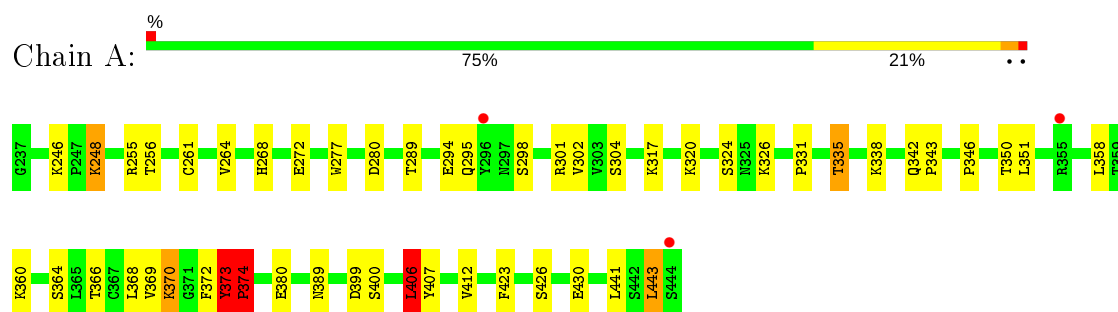
- Molecule 4 is water.

Mol	Chain	Residues	Atoms		ZeroOcc	AltConf
4	A	59	Total	O	0	0
			59	59		
4	B	59	Total	O	0	0
			59	59		

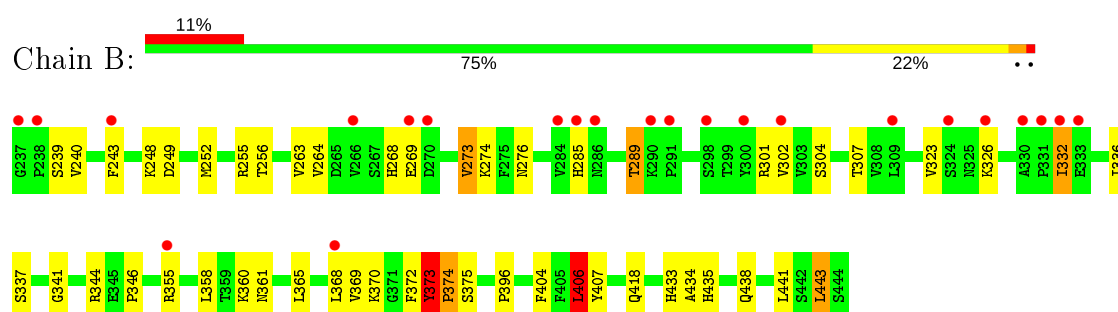
3 Residue-property plots [i](#)

These plots are drawn for all protein, RNA, DNA and oligosaccharide chains in the entry. The first graphic for a chain summarises the proportions of the various outlier classes displayed in the second graphic. The second graphic shows the sequence view annotated by issues in geometry and electron density. Residues are color-coded according to the number of geometric quality criteria for which they contain at least one outlier: green = 0, yellow = 1, orange = 2 and red = 3 or more. A red dot above a residue indicates a poor fit to the electron density ($RSRZ > 2$). Stretches of 2 or more consecutive residues without any outlier are shown as a green connector. Residues present in the sample, but not in the model, are shown in grey.

- Molecule 1: Ig gamma-1 chain C region



- Molecule 1: Ig gamma-1 chain C region



- Molecule 2: 2-acetamido-2-deoxy-beta-D-glucopyranose-(1-2)-alpha-D-mannopyranose-(1-3)-[2-acetamido-2-deoxy-beta-D-glucopyranose-(1-2)-alpha-D-mannopyranose-(1-6)]beta-D-mannopyranose-(1-4)-2-acetamido-2-deoxy-beta-D-glucopyranose-(1-4)-[alpha-L-fucopyranose-(1-6)]2-acetamido-2-deoxy-beta-D-glucopyranose



- Molecule 2: 2-acetamido-2-deoxy-beta-D-glucopyranose-(1-2)-alpha-D-mannopyranose-(1-3)-[2-acetamido-2-deoxy-beta-D-glucopyranose-(1-2)-alpha-D-mannopyranose-(1-6)]beta-D-mannopyranose-(1-4)-2-acetamido-2-deoxy-beta-D-glucopyranose-(1-4)-[alpha-L-fucopyranose-(1-6)]2-acetamido-2-deoxy-beta-D-glucopyranose



UAG1	UAG2	BM13	MAN4	NAG5	MAN6	UAG7	FUC8
------	------	------	------	------	------	------	------

4 Data and refinement statistics

Property	Value	Source
Space group	P 21 21 21	Depositor
Cell constants a, b, c, α , β , γ	49.18 Å 74.95 Å 146.69 Å 90.00° 90.00° 90.00°	Depositor
Resolution (Å)	29.81 – 2.20 29.81 – 2.20	Depositor EDS
% Data completeness (in resolution range)	98.1 (29.81-2.20) 98.1 (29.81-2.20)	Depositor EDS
R_{merge}	(Not available)	Depositor
R_{sym}	(Not available)	Depositor
$\langle I/\sigma(I) \rangle$ ¹	2.37 (at 2.20 Å)	Xtriage
Refinement program	PHENIX (phenix.refine: 1.7.3_928)	Depositor
R, R_{free}	0.224 , 0.291 0.219 , 0.282	Depositor DCC
R_{free} test set	2000 reflections (7.20%)	wwPDB-VP
Wilson B-factor (Å ²)	35.6	Xtriage
Anisotropy	0.652	Xtriage
Bulk solvent k_{sol} (e/Å ³), B_{sol} (Å ²)	0.31 , 45.1	EDS
L-test for twinning ²	$\langle L \rangle = 0.49$, $\langle L^2 \rangle = 0.32$	Xtriage
Estimated twinning fraction	No twinning to report.	Xtriage
F_o, F_c correlation	0.94	EDS
Total number of atoms	3646	wwPDB-VP
Average B, all atoms (Å ²)	56.0	wwPDB-VP

Xtriage's analysis on translational NCS is as follows: *The largest off-origin peak in the Patterson function is 14.70% of the height of the origin peak. No significant pseudotranslation is detected.*

¹Intensities estimated from amplitudes.

²Theoretical values of $\langle |L| \rangle$, $\langle L^2 \rangle$ for acentric reflections are 0.5, 0.333 respectively for untwinned datasets, and 0.375, 0.2 for perfectly twinned datasets.

5 Model quality

5.1 Standard geometry

Bond lengths and bond angles in the following residue types are not validated in this section: FUC, MAN, BMA, NAG, EDO

The Z score for a bond length (or angle) is the number of standard deviations the observed value is removed from the expected value. A bond length (or angle) with $|Z| > 5$ is considered an outlier worth inspection. RMSZ is the root-mean-square of all Z scores of the bond lengths (or angles).

Mol	Chain	Bond lengths		Bond angles	
		RMSZ	$\# Z > 5$	RMSZ	$\# Z > 5$
1	A	0.44	0/1707	0.67	2/2326 (0.1%)
1	B	0.44	0/1707	0.60	2/2326 (0.1%)
All	All	0.44	0/3414	0.64	4/4652 (0.1%)

Chiral center outliers are detected by calculating the chiral volume of a chiral center and verifying if the center is modelled as a planar moiety or with the opposite hand. A planarity outlier is detected by checking planarity of atoms in a peptide group, atoms in a mainchain group or atoms of a sidechain that are expected to be planar.

Mol	Chain	#Chirality outliers	#Planarity outliers
1	A	0	1
1	B	0	1
All	All	0	2

There are no bond length outliers.

All (4) bond angle outliers are listed below:

Mol	Chain	Res	Type	Atoms	Z	Observed(°)	Ideal(°)
1	A	373	TYR	C-N-CD	-12.25	93.65	120.60
1	B	373	TYR	C-N-CD	-9.71	99.25	120.60
1	A	406	LEU	CA-CB-CG	6.41	130.04	115.30
1	B	406	LEU	CA-CB-CG	6.09	129.32	115.30

There are no chirality outliers.

All (2) planarity outliers are listed below:

Mol	Chain	Res	Type	Group
1	A	373	TYR	Peptide
1	B	373	TYR	Peptide

5.2 Too-close contacts ⓘ

In the following table, the Non-H and H(model) columns list the number of non-hydrogen atoms and hydrogen atoms in the chain respectively. The H(added) column lists the number of hydrogen atoms added and optimized by MolProbity. The Clashes column lists the number of clashes within the asymmetric unit, whereas Symm-Clashes lists symmetry related clashes.

Mol	Chain	Non-H	H(model)	H(added)	Clashes	Symm-Clashes
1	A	1661	0	1629	26	0
1	B	1661	0	1629	24	0
2	C	99	0	85	1	0
2	D	99	0	85	1	0
3	A	4	0	6	1	0
3	B	4	0	6	1	0
4	A	59	0	0	5	0
4	B	59	0	0	2	0
All	All	3646	0	3440	51	0

The all-atom clashscore is defined as the number of clashes found per 1000 atoms (including hydrogen atoms). The all-atom clashscore for this structure is 7.

All (51) close contacts within the same asymmetric unit are listed below, sorted by their clash magnitude.

Atom-1	Atom-2	Interatomic distance (Å)	Clash overlap (Å)
1:A:370:LYS:NZ	4:A:603:HOH:O	2.20	0.75
1:A:246:LYS:NZ	2:C:7:NAG:O4	2.25	0.69
1:A:268:HIS:NE2	1:A:298:SER:O	2.26	0.67
1:A:400:SER:OG	4:A:601:HOH:O	2.12	0.67
1:A:380:GLU:OE2	4:A:602:HOH:O	2.13	0.65
1:A:264:VAL:HG12	1:A:301:ARG:HG3	1.78	0.65
1:A:399:ASP:OD2	4:A:601:HOH:O	2.15	0.63
1:A:338:LYS:NZ	1:A:430:GLU:OE2	2.30	0.61
1:A:272:GLU:HB3	1:A:326:LYS:HE2	1.84	0.60
1:B:341:GLY:HA3	1:B:373:TYR:HE2	1.68	0.58
1:A:320:LYS:HG3	1:A:335:THR:HG22	1.84	0.57
1:B:273:VAL:HG21	1:B:302:VAL:HG11	1.88	0.55
1:A:280:ASP:OD2	1:A:317:LYS:HD3	2.09	0.53
1:B:264:VAL:HG12	1:B:301:ARG:HG3	1.89	0.53
1:B:346:PRO:HB3	1:B:372:PHE:HB3	1.92	0.52
1:B:396:PRO:HD3	3:B:509:EDO:H11	1.92	0.52
1:B:370:LYS:NZ	4:B:605:HOH:O	2.28	0.50
1:B:418:GLN:HA	1:B:443:LEU:HD12	1.93	0.50
1:B:240:VAL:HG23	1:B:332:ILE:HD12	1.95	0.49

Continued on next page...

Continued from previous page...

Atom-1	Atom-2	Interatomic distance (Å)	Clash overlap (Å)
1:B:433:HIS:C	1:B:435:HIS:H	2.18	0.47
1:B:243:PHE:CD1	2:D:7:NAG:H5	2.50	0.47
1:A:248:LYS:HE3	1:A:255:ARG:NH1	2.29	0.46
1:A:350:THR:HB	1:A:441:LEU:HD22	1.97	0.46
1:A:412:VAL:HG11	1:A:423:PHE:CE1	2.51	0.46
1:A:351:LEU:HB2	1:A:366:THR:HB	1.99	0.45
1:A:324:SER:HB3	1:A:331:PRO:HG3	1.98	0.45
1:B:252:MET:HB2	1:B:255:ARG:HG3	1.99	0.44
1:A:289:THR:HA	1:A:304:SER:HA	1.99	0.44
1:B:336:ILE:N	4:B:609:HOH:O	2.48	0.44
1:B:274:LYS:HE3	1:B:276:ASN:OD1	2.18	0.43
1:A:443:LEU:HD23	1:A:443:LEU:HA	1.84	0.43
1:A:369:VAL:HB	1:A:406:LEU:HD22	1.99	0.43
1:A:342:GLN:HA	1:A:343:PRO:HD3	1.85	0.43
1:B:240:VAL:HG22	1:B:263:VAL:HG22	2.00	0.43
1:B:263:VAL:HG21	1:B:323:VAL:HG11	2.00	0.42
1:A:268:HIS:HE2	1:A:298:SER:HB3	1.85	0.42
1:A:346:PRO:HB3	1:A:372:PHE:HB3	2.01	0.42
1:B:249:ASP:OD1	1:B:255:ARG:NE	2.44	0.42
3:A:509:EDO:O1	4:A:604:HOH:O	2.21	0.42
1:A:373:TYR:CD2	1:A:374:PRO:HD3	2.55	0.42
1:B:289:THR:HA	1:B:304:SER:HA	2.02	0.42
1:B:326:LYS:HB2	1:B:326:LYS:HE3	1.65	0.42
1:B:375:SER:HB3	1:B:404:PHE:CE2	2.55	0.42
1:A:261:CYS:HB2	1:A:277:TRP:CH2	2.55	0.41
1:B:344:ARG:HD3	1:B:373:TYR:HB2	2.01	0.41
1:B:368:LEU:HD13	1:B:407:TYR:CZ	2.54	0.41
1:B:369:VAL:HB	1:B:406:LEU:HD22	2.02	0.41
1:A:368:LEU:HD13	1:A:407:TYR:CZ	2.55	0.41
1:A:389:ASN:N	1:A:389:ASN:OD1	2.50	0.41
1:B:256:THR:HG23	1:B:307:THR:HG23	2.02	0.41
1:B:365:LEU:HG	1:B:441:LEU:HD23	2.04	0.40

There are no symmetry-related clashes.

5.3 Torsion angles ⓘ

5.3.1 Protein backbone ⓘ

In the following table, the Percentiles column shows the percent Ramachandran outliers of the chain as a percentile score with respect to all X-ray entries followed by that with respect to entries

of similar resolution.

The Analysed column shows the number of residues for which the backbone conformation was analysed, and the total number of residues.

Mol	Chain	Analysed	Favoured	Allowed	Outliers	Percentiles	
1	A	206/208 (99%)	198 (96%)	7 (3%)	1 (0%)	29	31
1	B	206/208 (99%)	198 (96%)	6 (3%)	2 (1%)	15	14
All	All	412/416 (99%)	396 (96%)	13 (3%)	3 (1%)	22	22

All (3) Ramachandran outliers are listed below:

Mol	Chain	Res	Type
1	A	374	PRO
1	B	374	PRO
1	B	434	ALA

5.3.2 Protein sidechains ⓘ

In the following table, the Percentiles column shows the percent sidechain outliers of the chain as a percentile score with respect to all X-ray entries followed by that with respect to entries of similar resolution.

The Analysed column shows the number of residues for which the sidechain conformation was analysed, and the total number of residues.

Mol	Chain	Analysed	Rotameric	Outliers	Percentiles	
1	A	193/193 (100%)	179 (93%)	14 (7%)	14	15
1	B	193/193 (100%)	176 (91%)	17 (9%)	10	10
All	All	386/386 (100%)	355 (92%)	31 (8%)	12	12

All (31) residues with a non-rotameric sidechain are listed below:

Mol	Chain	Res	Type
1	A	248	LYS
1	A	256	THR
1	A	294	GLU
1	A	295	GLN
1	A	302	VAL
1	A	335	THR
1	A	358	LEU
1	A	360	LYS
1	A	364	SER

Continued on next page...

Continued from previous page...

Mol	Chain	Res	Type
1	A	370	LYS
1	A	374	PRO
1	A	406	LEU
1	A	426	SER
1	A	443	LEU
1	B	239	SER
1	B	248	LYS
1	B	268	HIS
1	B	269	GLU
1	B	273	VAL
1	B	285	HIS
1	B	289	THR
1	B	332	ILE
1	B	337	SER
1	B	355	ARG
1	B	358	LEU
1	B	360	LYS
1	B	361	ASN
1	B	374	PRO
1	B	406	LEU
1	B	438	GLN
1	B	443	LEU

Some sidechains can be flipped to improve hydrogen bonding and reduce clashes. There are no such sidechains identified.

5.3.3 RNA ⓘ

There are no RNA molecules in this entry.

5.4 Non-standard residues in protein, DNA, RNA chains ⓘ

There are no non-standard protein/DNA/RNA residues in this entry.

5.5 Carbohydrates ⓘ

16 monosaccharides are modelled in this entry.

In the following table, the Counts columns list the number of bonds (or angles) for which Mogul statistics could be retrieved, the number of bonds (or angles) that are observed in the model and the number of bonds (or angles) that are defined in the Chemical Component Dictionary. The

Link column lists molecule types, if any, to which the group is linked. The Z score for a bond length (or angle) is the number of standard deviations the observed value is removed from the expected value. A bond length (or angle) with $|Z| > 2$ is considered an outlier worth inspection. RMSZ is the root-mean-square of all Z scores of the bond lengths (or angles).

Mol	Type	Chain	Res	Link	Bond lengths			Bond angles		
					Counts	RMSZ	# Z > 2	Counts	RMSZ	# Z > 2
2	NAG	C	1	1,2	14,14,15	0.55	0	17,19,21	1.35	2 (11%)
2	NAG	C	2	2	14,14,15	0.61	0	17,19,21	0.78	0
2	BMA	C	3	2	11,11,12	0.67	0	15,15,17	0.83	0
2	MAN	C	4	2	11,11,12	0.69	0	15,15,17	1.45	2 (13%)
2	NAG	C	5	2	14,14,15	0.60	0	17,19,21	0.90	1 (5%)
2	MAN	C	6	2	11,11,12	0.73	0	15,15,17	1.26	1 (6%)
2	NAG	C	7	2	14,14,15	0.54	0	17,19,21	1.45	1 (5%)
2	FUC	C	8	2	10,10,11	0.57	0	14,14,16	1.19	2 (14%)
2	NAG	D	1	1,2	14,14,15	0.49	0	17,19,21	0.90	1 (5%)
2	NAG	D	2	2	14,14,15	0.58	0	17,19,21	0.83	0
2	BMA	D	3	2	11,11,12	0.74	0	15,15,17	1.25	2 (13%)
2	MAN	D	4	2	11,11,12	0.72	0	15,15,17	1.22	2 (13%)
2	NAG	D	5	2	14,14,15	0.56	0	17,19,21	1.43	4 (23%)
2	MAN	D	6	2	11,11,12	0.63	0	15,15,17	0.88	1 (6%)
2	NAG	D	7	2	14,14,15	0.52	0	17,19,21	0.75	0
2	FUC	D	8	2	10,10,11	0.67	0	14,14,16	0.95	0

In the following table, the Chirals column lists the number of chiral outliers, the number of chiral centers analysed, the number of these observed in the model and the number defined in the Chemical Component Dictionary. Similar counts are reported in the Torsion and Rings columns. '-' means no outliers of that kind were identified.

Mol	Type	Chain	Res	Link	Chirals	Torsions	Rings
2	NAG	C	1	1,2	-	1/6/23/26	0/1/1/1
2	NAG	C	2	2	-	0/6/23/26	0/1/1/1
2	BMA	C	3	2	-	1/2/19/22	0/1/1/1
2	MAN	C	4	2	-	1/2/19/22	0/1/1/1
2	NAG	C	5	2	-	4/6/23/26	0/1/1/1
2	MAN	C	6	2	-	2/2/19/22	0/1/1/1
2	NAG	C	7	2	-	0/6/23/26	0/1/1/1
2	FUC	C	8	2	-	-	0/1/1/1
2	NAG	D	1	1,2	-	4/6/23/26	0/1/1/1
2	NAG	D	2	2	-	0/6/23/26	0/1/1/1
2	BMA	D	3	2	-	0/2/19/22	0/1/1/1
2	MAN	D	4	2	-	0/2/19/22	0/1/1/1

Continued on next page...

Continued from previous page...

Mol	Type	Chain	Res	Link	Chirals	Torsions	Rings
2	NAG	D	5	2	-	2/6/23/26	0/1/1/1
2	MAN	D	6	2	-	0/2/19/22	0/1/1/1
2	NAG	D	7	2	-	4/6/23/26	0/1/1/1
2	FUC	D	8	2	-	-	0/1/1/1

There are no bond length outliers.

All (19) bond angle outliers are listed below:

Mol	Chain	Res	Type	Atoms	Z	Observed(°)	Ideal(°)
2	C	7	NAG	C1-O5-C5	4.52	118.32	112.19
2	C	1	NAG	C1-O5-C5	3.73	117.25	112.19
2	C	4	MAN	O5-C1-C2	-3.68	105.09	110.77
2	D	3	BMA	C1-C2-C3	3.54	114.01	109.67
2	D	1	NAG	C1-O5-C5	3.01	116.27	112.19
2	C	8	FUC	C2-C3-C4	-2.77	106.11	110.89
2	D	4	MAN	O2-C2-C3	-2.73	104.68	110.14
2	C	5	NAG	C1-O5-C5	2.72	115.87	112.19
2	D	4	MAN	O5-C1-C2	-2.66	106.67	110.77
2	D	5	NAG	C3-C4-C5	2.64	114.94	110.24
2	C	6	MAN	O2-C2-C3	-2.61	104.91	110.14
2	D	5	NAG	O5-C1-C2	-2.60	107.19	111.29
2	D	3	BMA	O5-C5-C6	2.50	111.13	107.20
2	C	1	NAG	C2-N2-C7	-2.36	119.55	122.90
2	D	5	NAG	C4-C3-C2	-2.29	107.66	111.02
2	C	4	MAN	O2-C2-C3	-2.13	105.88	110.14
2	C	8	FUC	O5-C5-C6	2.08	111.81	107.33
2	D	6	MAN	O2-C2-C1	2.04	113.34	109.15
2	D	5	NAG	O5-C5-C4	2.03	115.77	110.83

There are no chirality outliers.

All (19) torsion outliers are listed below:

Mol	Chain	Res	Type	Atoms
2	D	7	NAG	C8-C7-N2-C2
2	D	7	NAG	O7-C7-N2-C2
2	D	1	NAG	C8-C7-N2-C2
2	D	1	NAG	O7-C7-N2-C2
2	D	1	NAG	O5-C5-C6-O6
2	D	7	NAG	C4-C5-C6-O6
2	D	7	NAG	O5-C5-C6-O6
2	C	5	NAG	O5-C5-C6-O6

Continued on next page...

Continued from previous page...

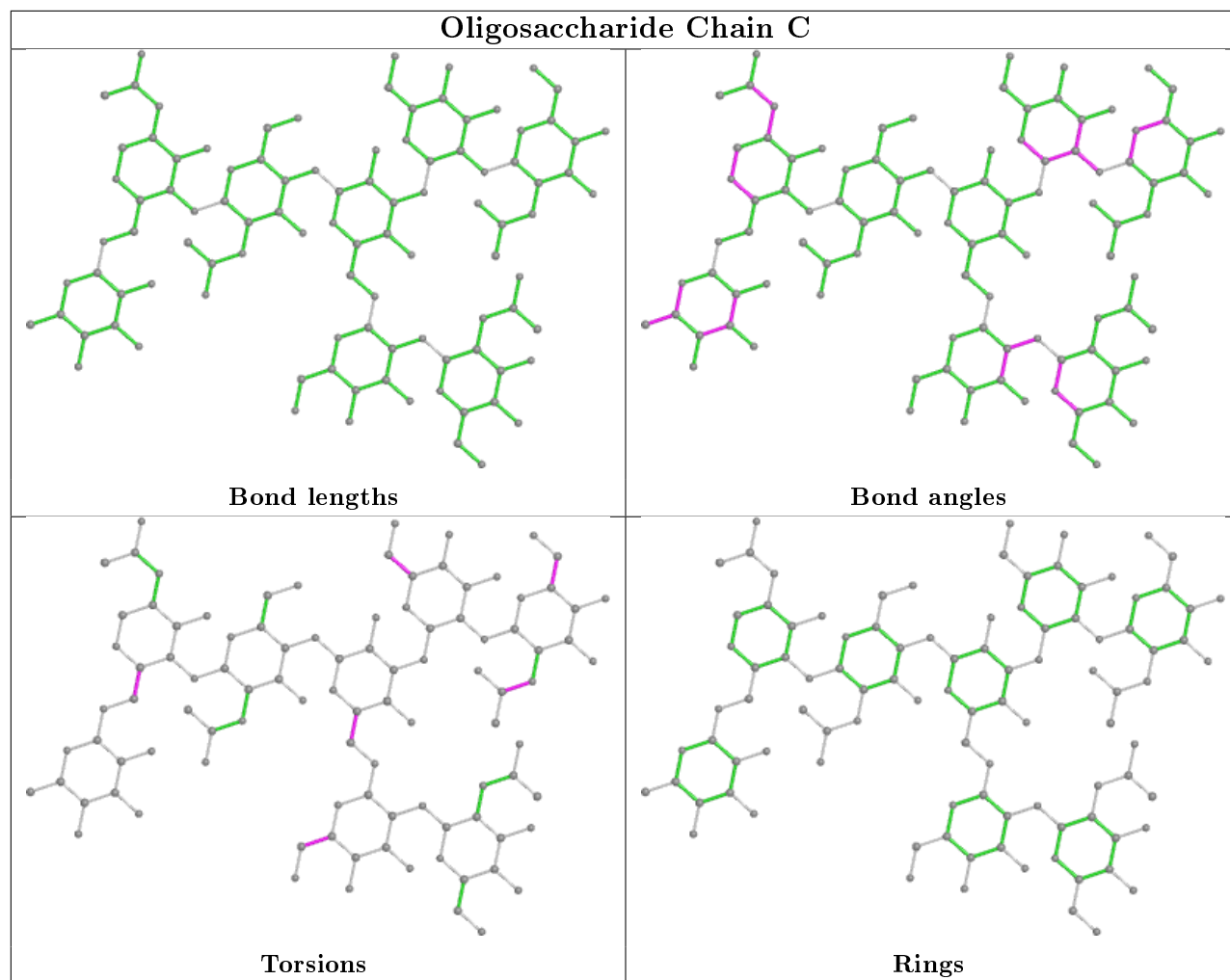
Mol	Chain	Res	Type	Atoms
2	D	1	NAG	C4-C5-C6-O6
2	D	5	NAG	C8-C7-N2-C2
2	D	5	NAG	O7-C7-N2-C2
2	C	5	NAG	C4-C5-C6-O6
2	C	6	MAN	O5-C5-C6-O6
2	C	5	NAG	C8-C7-N2-C2
2	C	5	NAG	O7-C7-N2-C2
2	C	6	MAN	C4-C5-C6-O6
2	C	3	BMA	O5-C5-C6-O6
2	C	4	MAN	O5-C5-C6-O6
2	C	1	NAG	C4-C5-C6-O6

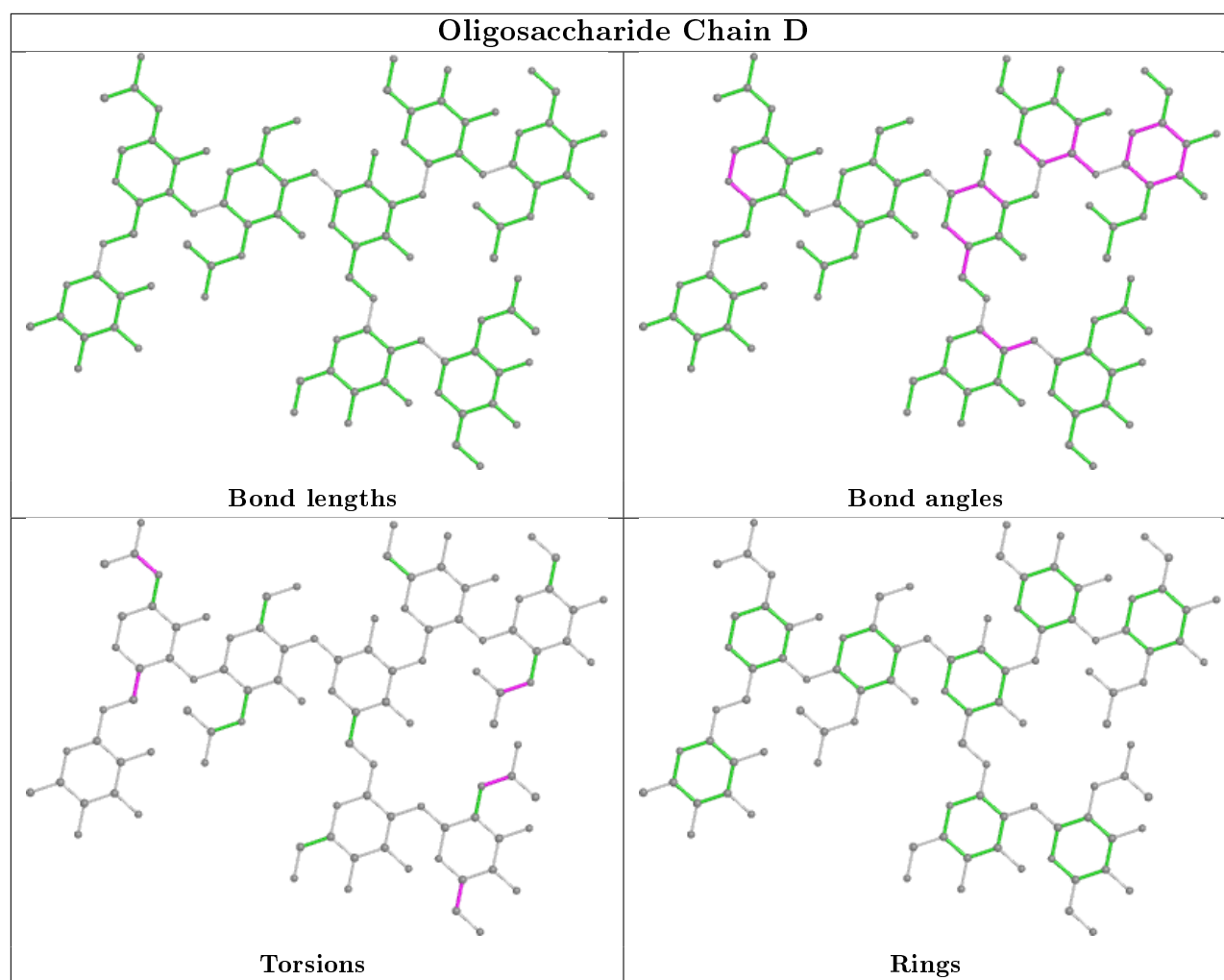
There are no ring outliers.

2 monomers are involved in 2 short contacts:

Mol	Chain	Res	Type	Clashes	Symm-Clashes
2	D	7	NAG	1	0
2	C	7	NAG	1	0

The following is a two-dimensional graphical depiction of Mogul quality analysis of bond lengths, bond angles, torsion angles, and ring geometry for oligosaccharide.





5.6 Ligand geometry [i](#)

2 ligands are modelled in this entry.

In the following table, the Counts columns list the number of bonds (or angles) for which Mogul statistics could be retrieved, the number of bonds (or angles) that are observed in the model and the number of bonds (or angles) that are defined in the Chemical Component Dictionary. The Link column lists molecule types, if any, to which the group is linked. The Z score for a bond length (or angle) is the number of standard deviations the observed value is removed from the expected value. A bond length (or angle) with $|Z| > 2$ is considered an outlier worth inspection. RMSZ is the root-mean-square of all Z scores of the bond lengths (or angles).

Mol	Type	Chain	Res	Link	Bond lengths			Bond angles		
					Counts	RMSZ	$\# Z > 2$	Counts	RMSZ	$\# Z > 2$
3	EDO	B	509	-	3,3,3	0.59	0	2,2,2	0.27	0
3	EDO	A	509	-	3,3,3	0.52	0	2,2,2	0.34	0

In the following table, the Chirals column lists the number of chiral outliers, the number of chiral centers analysed, the number of these observed in the model and the number defined in the

Chemical Component Dictionary. Similar counts are reported in the Torsion and Rings columns. '-' means no outliers of that kind were identified.

Mol	Type	Chain	Res	Link	Chirals	Torsions	Rings
3	EDO	B	509	-	-	1/1/1/1	-
3	EDO	A	509	-	-	0/1/1/1	-

There are no bond length outliers.

There are no bond angle outliers.

There are no chirality outliers.

All (1) torsion outliers are listed below:

Mol	Chain	Res	Type	Atoms
3	B	509	EDO	O1-C1-C2-O2

There are no ring outliers.

2 monomers are involved in 2 short contacts:

Mol	Chain	Res	Type	Clashes	Symm-Clashes
3	B	509	EDO	1	0
3	A	509	EDO	1	0

5.7 Other polymers [i](#)

There are no such residues in this entry.

5.8 Polymer linkage issues [i](#)

There are no chain breaks in this entry.

6 Fit of model and data ⓘ

6.1 Protein, DNA and RNA chains ⓘ

In the following table, the column labelled ‘#RSRZ> 2’ contains the number (and percentage) of RSRZ outliers, followed by percent RSRZ outliers for the chain as percentile scores relative to all X-ray entries and entries of similar resolution. The OWAB column contains the minimum, median, 95th percentile and maximum values of the occupancy-weighted average B-factor per residue. The column labelled ‘Q< 0.9’ lists the number of (and percentage) of residues with an average occupancy less than 0.9.

Mol	Chain	Analysed	<RSRZ>	#RSRZ>2	OWAB(Å ²)	Q<0.9
1	A	208/208 (100%)	-0.22	3 (1%) 75 73	21, 44, 83, 105	0
1	B	208/208 (100%)	0.48	23 (11%) 5 4	20, 57, 113, 133	0
All	All	416/416 (100%)	0.13	26 (6%) 20 19	20, 47, 105, 133	0

All (26) RSRZ outliers are listed below:

Mol	Chain	Res	Type	RSRZ
1	B	331	PRO	5.4
1	B	330	ALA	4.8
1	B	238	PRO	4.2
1	B	291	PRO	4.2
1	B	269	GLU	4.0
1	B	266	VAL	4.0
1	B	237	GLY	3.7
1	B	333	GLU	3.4
1	A	296	TYR	3.3
1	B	243	PHE	3.3
1	B	355	ARG	3.1
1	B	300	TYR	3.0
1	B	324	SER	3.0
1	B	302	VAL	2.9
1	A	355	ARG	2.8
1	B	298	SER	2.7
1	A	444	SER	2.5
1	B	286	ASN	2.5
1	B	332	ILE	2.4
1	B	290	LYS	2.3
1	B	284	VAL	2.2
1	B	285	HIS	2.1
1	B	309	LEU	2.1
1	B	326	LYS	2.1

Continued on next page...

Continued from previous page...

Mol	Chain	Res	Type	RSRZ
1	B	368	LEU	2.1
1	B	270	ASP	2.0

6.2 Non-standard residues in protein, DNA, RNA chains [i](#)

There are no non-standard protein/DNA/RNA residues in this entry.

6.3 Carbohydrates [i](#)

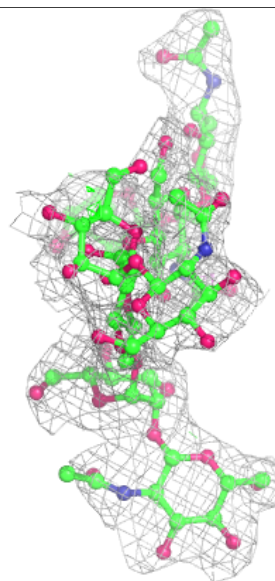
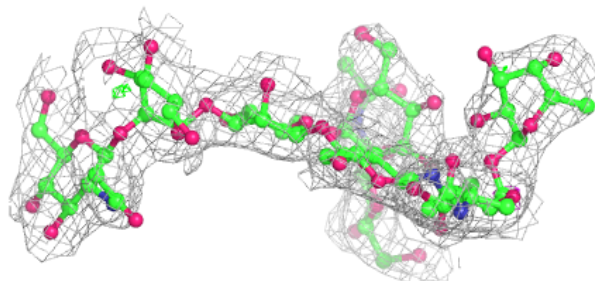
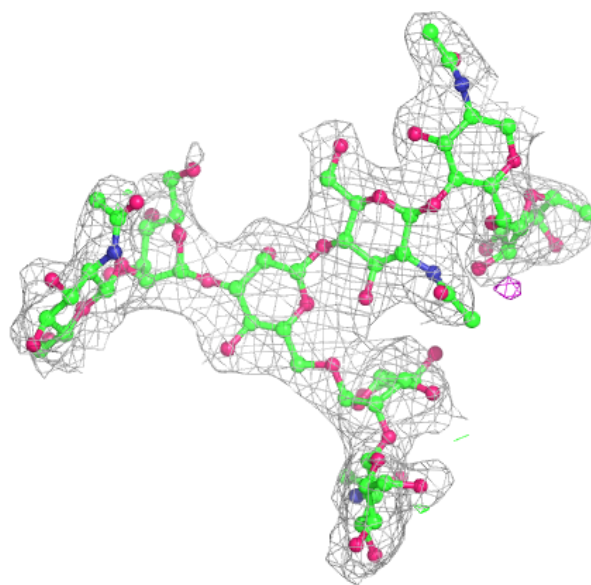
In the following table, the Atoms column lists the number of modelled atoms in the group and the number defined in the chemical component dictionary. The B-factors column lists the minimum, median, 95th percentile and maximum values of B factors of atoms in the group. The column labelled 'Q<0.9' lists the number of atoms with occupancy less than 0.9.

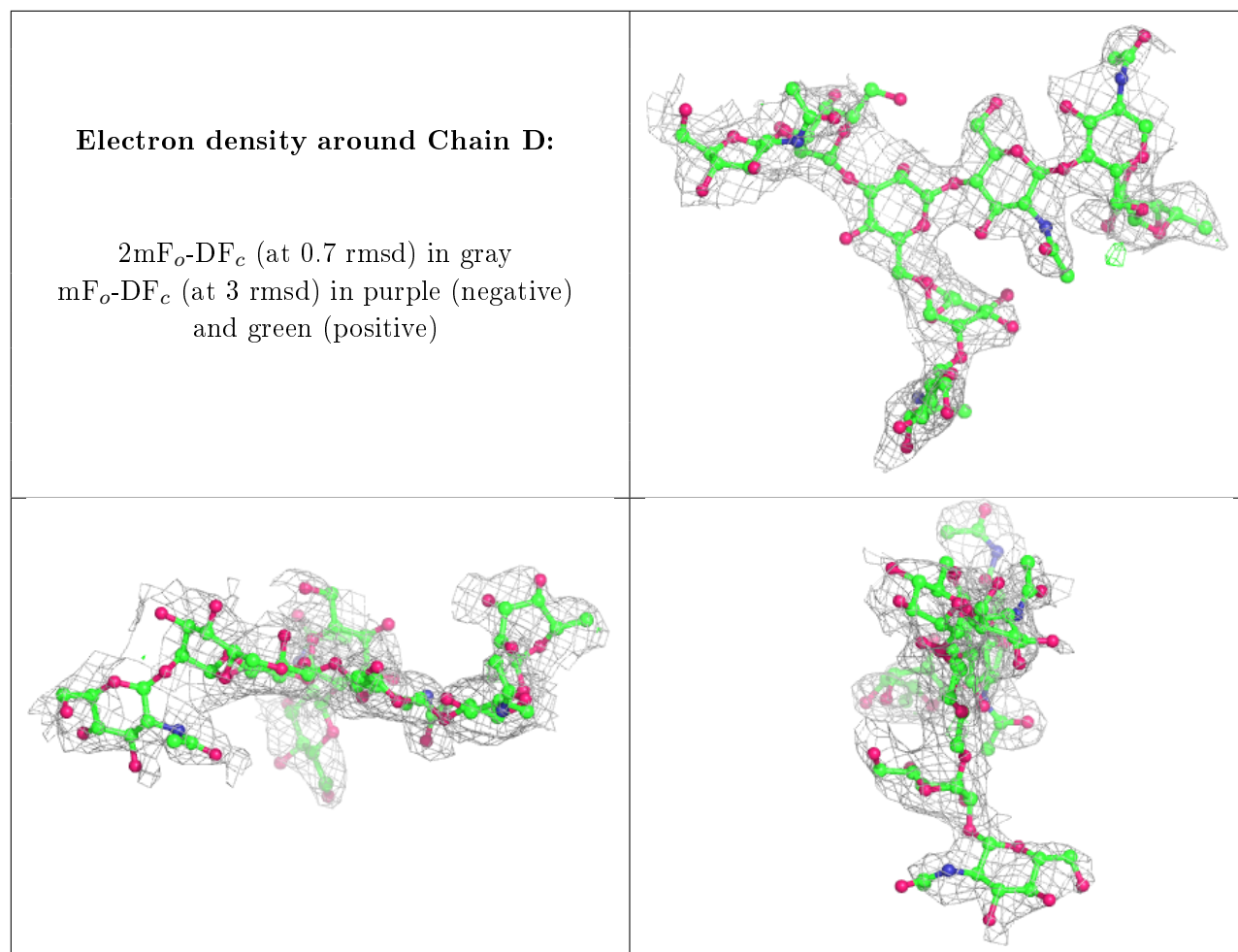
Mol	Type	Chain	Res	Atoms	RSCC	RSR	B-factors(Å ²)	Q<0.9
2	FUC	D	8	10/11	0.44	0.27	101,115,120,120	0
2	NAG	D	1	14/15	0.68	0.15	86,96,108,113	0
2	NAG	D	7	14/15	0.72	0.32	99,106,112,117	0
2	NAG	D	5	14/15	0.78	0.29	103,111,116,116	0
2	NAG	C	5	14/15	0.83	0.26	92,99,106,108	0
2	MAN	D	6	11/12	0.85	0.26	95,105,111,114	0
2	NAG	D	2	14/15	0.87	0.23	63,84,92,94	0
2	NAG	C	1	14/15	0.87	0.10	45,58,64,70	0
2	MAN	C	4	11/12	0.88	0.21	64,81,87,94	0
2	FUC	C	8	10/11	0.89	0.27	67,77,80,87	0
2	MAN	D	4	11/12	0.89	0.24	87,94,101,102	0
2	BMA	D	3	11/12	0.89	0.24	89,92,94,94	0
2	NAG	C	7	14/15	0.90	0.17	50,64,95,96	0
2	MAN	C	6	11/12	0.93	0.13	61,68,76,79	0
2	NAG	C	2	14/15	0.94	0.12	53,64,68,69	0
2	BMA	C	3	11/12	0.94	0.10	59,65,69,76	0

The following is a graphical depiction of the model fit to experimental electron density for oligosaccharide. Each fit is shown from different orientation to approximate a three-dimensional view.

Electron density around Chain C:

$2mF_o-DF_c$ (at 0.7 rmsd) in gray
 mF_o-DF_c (at 3 rmsd) in purple (negative)
and green (positive)





6.4 Ligands [i](#)

In the following table, the Atoms column lists the number of modelled atoms in the group and the number defined in the chemical component dictionary. The B-factors column lists the minimum, median, 95th percentile and maximum values of B factors of atoms in the group. The column labelled 'Q < 0.9' lists the number of atoms with occupancy less than 0.9.

Mol	Type	Chain	Res	Atoms	RSCC	RSR	B-factors(\AA^2)	Q<0.9
3	EDO	B	509	4/4	0.80	0.22	43,50,51,52	0
3	EDO	A	509	4/4	0.92	0.27	50,51,51,55	0

6.5 Other polymers [i](#)

There are no such residues in this entry.