



Full wwPDB X-ray Structure Validation Report ⓘ

Aug 8, 2020 – 04:22 AM BST

PDB ID : 2WLY
Title : Chitinase A from *Serratia marcescens* ATCC990 in complex with Chitotriohiazoline.
Authors : Taylor, E.J.; Dennis, R.J.; Macdonald, J.M.; Tarling, C.A.; Knapp, S.; Withers, S.G.; Davies, G.J.
Deposited on : 2009-06-29
Resolution : 2.40 Å(reported)

This is a Full wwPDB X-ray Structure Validation Report for a publicly released PDB entry.

We welcome your comments at validation@mail.wwpdb.org

A user guide is available at

<https://www.wwpdb.org/validation/2017/XrayValidationReportHelp>

with specific help available everywhere you see the ⓘ symbol.

The following versions of software and data (see [references ⓘ](#)) were used in the production of this report:

MolProbity : 4.02b-467
Mogul : 1.8.5 (274361), CSD as541be (2020)
Xtriage (Phenix) : 1.13
EDS : 2.13.1
Percentile statistics : 20191225.v01 (using entries in the PDB archive December 25th 2019)
Refmac : 5.8.0158
CCP4 : 7.0.044 (Gargrove)
Ideal geometry (proteins) : Engh & Huber (2001)
Ideal geometry (DNA, RNA) : Parkinson et al. (1996)
Validation Pipeline (wwPDB-VP) : 2.13.1

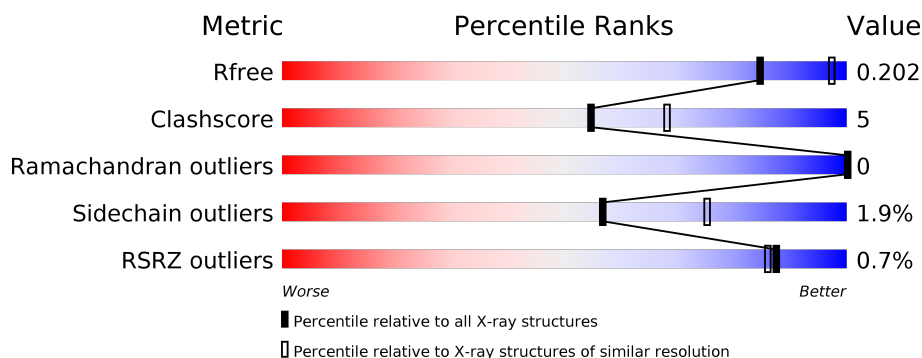
1 Overall quality at a glance

The following experimental techniques were used to determine the structure:

X-RAY DIFFRACTION

The reported resolution of this entry is 2.40 Å.

Percentile scores (ranging between 0-100) for global validation metrics of the entry are shown in the following graphic. The table shows the number of entries on which the scores are based.



Metric	Whole archive (#Entries)	Similar resolution (#Entries, resolution range(Å))
R_{free}	130704	3907 (2.40-2.40)
Clashscore	141614	4398 (2.40-2.40)
Ramachandran outliers	138981	4318 (2.40-2.40)
Sidechain outliers	138945	4319 (2.40-2.40)
RSRZ outliers	127900	3811 (2.40-2.40)

The table below summarises the geometric issues observed across the polymeric chains and their fit to the electron density. The red, orange, yellow and green segments on the lower bar indicate the fraction of residues that contain outliers for ≥ 3 , 2, 1 and 0 types of geometric quality criteria respectively. A grey segment represents the fraction of residues that are not modelled. The numeric value for each fraction is indicated below the corresponding segment, with a dot representing fractions $\leq 5\%$. The upper red bar (where present) indicates the fraction of residues that have poor fit to the electron density. The numeric value is given above the bar.

Mol	Chain	Length	Quality of chain
1	A	548	<div> <div style="width: 100%; height: 10px; position: relative;"> <div style="position: absolute; left: 0; top: 0; width: 100%; height: 100%; background: linear-gradient(to right, red, orange, yellow, green, grey);"></div> <div style="position: absolute; left: 0; top: 0; width: 10%; height: 100%; background-color: red;"></div> <div style="position: absolute; left: 87%; top: 0; width: 12%; height: 100%; background-color: green;"></div> <div style="position: absolute; left: 98%; top: 0; width: 2%; height: 100%; background-color: grey;"></div> </div> <div style="display: flex; justify-content: space-between; width: 100%;"> % 87% 10% .. </div> </div>

The following table lists non-polymeric compounds, carbohydrate monomers and non-standard residues in protein, DNA, RNA chains that are outliers for geometric or electron-density-fit criteria:

Mol	Type	Chain	Res	Chirality	Geometry	Clashes	Electron density
3	PEG	A	1569	-	X	X	-

2 Entry composition

There are 6 unique types of molecules in this entry. The entry contains 4545 atoms, of which 0 are hydrogens and 0 are deuteriums.

In the tables below, the ZeroOcc column contains the number of atoms modelled with zero occupancy, the AltConf column contains the number of residues with at least one atom in alternate conformation and the Trace column contains the number of residues modelled with at most 2 atoms.

- Molecule 1 is a protein called Chitinase.

Mol	Chain	Residues	Atoms					ZeroOcc	AltConf	Trace
1	A	539	Total	C	N	O	S	0	2	0
			4140	2634	697	794	15			

There are 30 discrepancies between the modelled and reference sequences:

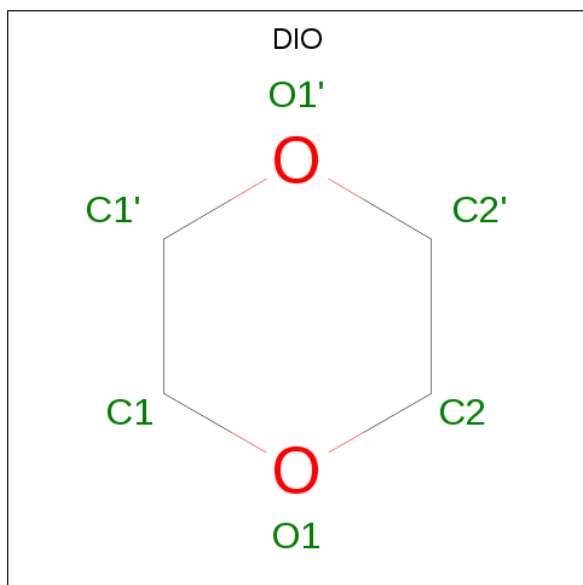
Chain	Residue	Modelled	Actual	Comment	Reference
A	542	ASP	-	expression tag	UNP A6XFF7
A	543	ALA	-	expression tag	UNP A6XFF7
A	544	ASP	-	expression tag	UNP A6XFF7
A	545	ASN	-	expression tag	UNP A6XFF7
A	546	GLY	-	expression tag	UNP A6XFF7
A	547	ASP	-	expression tag	UNP A6XFF7
A	548	ILE	-	expression tag	UNP A6XFF7
A	549	LEU	-	expression tag	UNP A6XFF7
A	550	ASN	-	expression tag	UNP A6XFF7
A	551	SER	-	expression tag	UNP A6XFF7
A	552	MET	-	expression tag	UNP A6XFF7
A	553	ASN	-	expression tag	UNP A6XFF7
A	554	ALA	-	expression tag	UNP A6XFF7
A	555	SER	-	expression tag	UNP A6XFF7
A	556	LEU	-	expression tag	UNP A6XFF7
A	557	GLY	-	expression tag	UNP A6XFF7
A	558	ASN	-	expression tag	UNP A6XFF7
A	559	SER	-	expression tag	UNP A6XFF7
A	560	ALA	-	expression tag	UNP A6XFF7
A	561	GLY	-	expression tag	UNP A6XFF7
A	562	VAL	-	expression tag	UNP A6XFF7
A	563	GLN	-	expression tag	UNP A6XFF7
A	564	LEU	-	expression tag	UNP A6XFF7
A	565	GLU	-	expression tag	UNP A6XFF7
A	566	HIS	-	expression tag	UNP A6XFF7
A	567	HIS	-	expression tag	UNP A6XFF7
A	568	HIS	-	expression tag	UNP A6XFF7

Continued on next page...

Continued from previous page...

Chain	Residue	Modelled	Actual	Comment	Reference
A	569	HIS	-	expression tag	UNP A6XFF7
A	570	HIS	-	expression tag	UNP A6XFF7
A	571	HIS	-	expression tag	UNP A6XFF7

- Molecule 2 is 1,4-DIETHYLENE DIOXIDE (three-letter code: DIO) (formula: C₄H₈O₂).



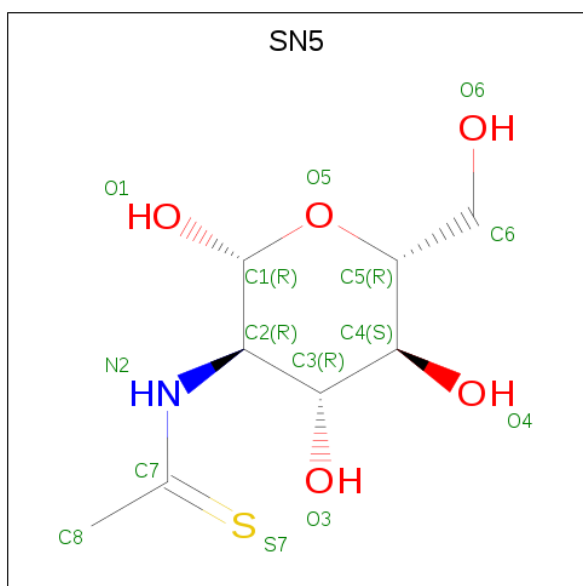
Mol	Chain	Residues	Atoms			ZeroOcc	AltConf
2	A	1	Total	C	O	0	0
			6	4	2		
2	A	1	Total	C	O	0	0
			6	4	2		
2	A	1	Total	C	O	0	0
			6	4	2		
2	A	1	Total	C	O	0	0
			6	4	2		

- Molecule 3 is DI(HYDROXYETHYL)ETHER (three-letter code: PEG) (formula: C₄H₁₀O₃).



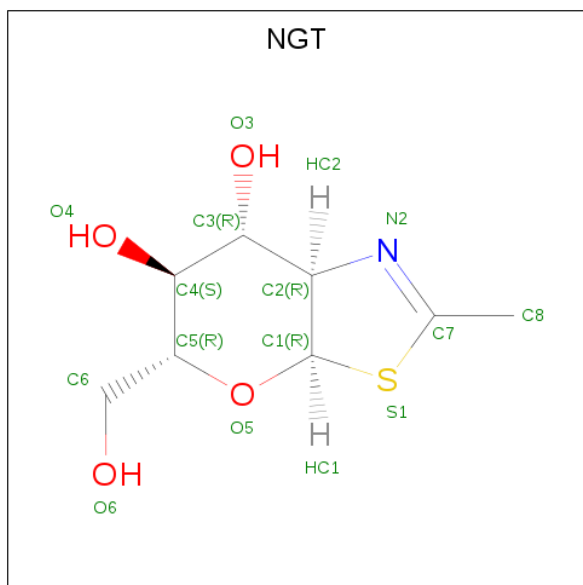
Mol	Chain	Residues	Atoms			ZeroOcc	AltConf
3	A	1	Total	C	O	0	0
			7	4	3		
3	A	1	Total	C	O	0	0
			7	4	3		
3	A	1	Total	C	O	0	0
			7	4	3		

- Molecule 4 is 2-deoxy-2-(ethanethioylamino)-beta-D-glucopyranose (three-letter code: SN5) (formula: $C_8H_{15}NO_5S$).



Mol	Chain	Residues	Atoms					ZeroOcc	AltConf
4	A	1	Total	C	N	O	S	0	0
			14	8	1	4	1		

- Molecule 5 is 3AR,5R,6S,7R,7AR-5-HYDROXYMETHYL-2-METHYL-5,6,7,7A-TETRAHYDRO-3AH-PYRANO[3,2-D]THIAZOLE-6,7-DIOL (three-letter code: NGT) (formula: $C_8H_{13}NO_4S$).



Mol	Chain	Residues	Atoms					ZeroOcc	AltConf
5	A	1	Total	C	N	O	S	0	0
			14	8	1	4	1		

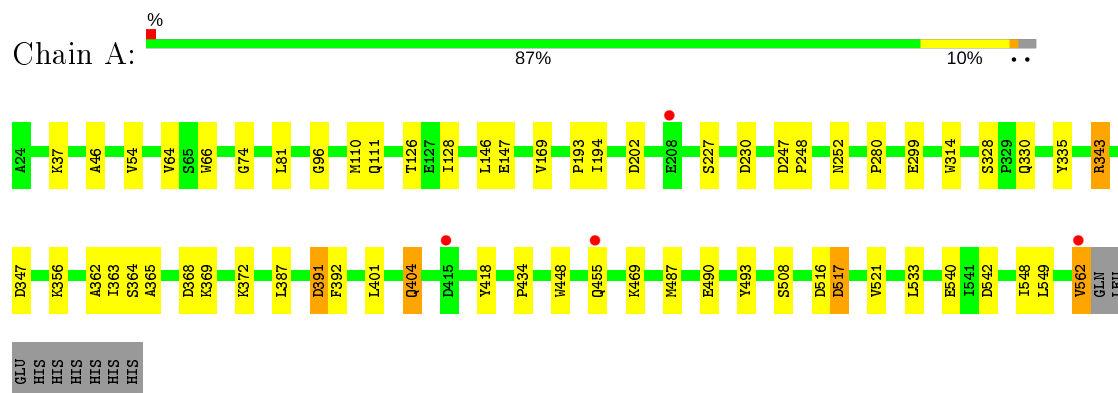
- Molecule 6 is water.

Mol	Chain	Residues	Atoms		ZeroOcc	AltConf
6	A	326	Total	O	0	0
			326	326		

3 Residue-property plots

These plots are drawn for all protein, RNA, DNA and oligosaccharide chains in the entry. The first graphic for a chain summarises the proportions of the various outlier classes displayed in the second graphic. The second graphic shows the sequence view annotated by issues in geometry and electron density. Residues are color-coded according to the number of geometric quality criteria for which they contain at least one outlier: green = 0, yellow = 1, orange = 2 and red = 3 or more. A red dot above a residue indicates a poor fit to the electron density ($RSRZ > 2$). Stretches of 2 or more consecutive residues without any outlier are shown as a green connector. Residues present in the sample, but not in the model, are shown in grey.

• Molecule 1: Chitinase



4 Data and refinement statistics

Property	Value	Source
Space group	C 2 2 21	Depositor
Cell constants a, b, c, α , β , γ	131.00Å 201.44Å 59.33Å 90.00° 90.00° 90.00°	Depositor
Resolution (Å)	109.76 – 2.40 29.61 – 2.40	Depositor EDS
% Data completeness (in resolution range)	98.7 (109.76-2.40) 98.8 (29.61-2.40)	Depositor EDS
R_{merge}	0.08	Depositor
R_{sym}	(Not available)	Depositor
$\langle I/\sigma(I) \rangle$ ¹	3.35 (at 2.39Å)	Xtriage
Refinement program	REFMAC 5.5.0097	Depositor
R, R_{free}	0.155 , 0.205 0.152 , 0.202	Depositor DCC
R_{free} test set	1558 reflections (5.04%)	wwPDB-VP
Wilson B-factor (Å ²)	27.3	Xtriage
Anisotropy	0.028	Xtriage
Bulk solvent k_{sol} (e/Å ³), B_{sol} (Å ²)	0.36 , 46.3	EDS
L-test for twinning ²	$\langle L \rangle = 0.48$, $\langle L^2 \rangle = 0.32$	Xtriage
Estimated twinning fraction	No twinning to report.	Xtriage
F_o, F_c correlation	0.96	EDS
Total number of atoms	4545	wwPDB-VP
Average B, all atoms (Å ²)	25.0	wwPDB-VP

Xtriage's analysis on translational NCS is as follows: *The largest off-origin peak in the Patterson function is 5.08% of the height of the origin peak. No significant pseudotranslation is detected.*

¹Intensities estimated from amplitudes.

²Theoretical values of $\langle |L| \rangle$, $\langle L^2 \rangle$ for acentric reflections are 0.5, 0.333 respectively for untwinned datasets, and 0.375, 0.2 for perfectly twinned datasets.

5 Model quality

5.1 Standard geometry

Bond lengths and bond angles in the following residue types are not validated in this section: NGT, PEG, SN5, DIO

The Z score for a bond length (or angle) is the number of standard deviations the observed value is removed from the expected value. A bond length (or angle) with $|Z| > 5$ is considered an outlier worth inspection. RMSZ is the root-mean-square of all Z scores of the bond lengths (or angles).

Mol	Chain	Bond lengths		Bond angles	
		RMSZ	$\# Z > 5$	RMSZ	$\# Z > 5$
1	A	1.13	2/4244 (0.0%)	0.98	12/5761 (0.2%)

All (2) bond length outliers are listed below:

Mol	Chain	Res	Type	Atoms	Z	Observed(Å)	Ideal(Å)
1	A	46	ALA	CA-CB	5.56	1.64	1.52
1	A	562	VAL	CA-CB	5.20	1.65	1.54

All (12) bond angle outliers are listed below:

Mol	Chain	Res	Type	Atoms	Z	Observed(°)	Ideal(°)
1	A	343	ARG	NE-CZ-NH1	11.68	126.14	120.30
1	A	343	ARG	NE-CZ-NH2	-8.86	115.87	120.30
1	A	517	ASP	CB-CG-OD2	-7.81	111.27	118.30
1	A	230	ASP	CB-CG-OD2	-6.66	112.31	118.30
1	A	347	ASP	CB-CG-OD2	-6.25	112.68	118.30
1	A	391	ASP	CB-CG-OD1	6.14	123.83	118.30
1	A	343	ARG	CD-NE-CZ	6.06	132.09	123.60
1	A	517	ASP	CB-CG-OD1	5.79	123.51	118.30
1	A	230	ASP	CB-CG-OD1	5.70	123.43	118.30
1	A	487	MET	CG-SD-CE	5.55	109.09	100.20
1	A	37	LYS	CD-CE-NZ	-5.26	99.61	111.70
1	A	202	ASP	CB-CG-OD1	5.21	122.99	118.30

There are no chirality outliers.

There are no planarity outliers.

5.2 Too-close contacts ⓘ

In the following table, the Non-H and H(model) columns list the number of non-hydrogen atoms and hydrogen atoms in the chain respectively. The H(added) column lists the number of hydrogen atoms added and optimized by MolProbity. The Clashes column lists the number of clashes within the asymmetric unit, whereas Symm-Clashes lists symmetry related clashes.

Mol	Chain	Non-H	H(model)	H(added)	Clashes	Symm-Clashes
1	A	4140	0	4008	41	0
2	A	30	0	40	2	0
3	A	21	0	30	11	0
4	A	14	0	13	0	0
5	A	14	0	12	0	0
6	A	326	0	0	3	0
All	All	4545	0	4103	43	0

The all-atom clashscore is defined as the number of clashes found per 1000 atoms (including hydrogen atoms). The all-atom clashscore for this structure is 5.

All (43) close contacts within the same asymmetric unit are listed below, sorted by their clash magnitude.

Atom-1	Atom-2	Interatomic distance (Å)	Clash overlap (Å)
1:A:64:VAL:HG21	1:A:110[B]:MET:SD	2.12	0.90
1:A:364:SER:HB3	3:A:1569:PEG:H42	1.56	0.85
1:A:363:ILE:HG22	3:A:1569:PEG:H21	1.65	0.78
1:A:314:TRP:O	3:A:1569:PEG:H11	1.83	0.77
1:A:335:TYR:CE2	3:A:1569:PEG:H22	2.26	0.70
1:A:391:ASP:H	1:A:404:GLN:NE2	1.90	0.69
1:A:169:VAL:HG11	1:A:252:ASN:HD21	1.61	0.66
1:A:54:VAL:HB	2:A:1563:DIO:H1'1	1.79	0.64
1:A:330:GLN:HB2	6:A:2227:HOH:O	2.04	0.58
1:A:391:ASP:H	1:A:404:GLN:HE21	1.52	0.56
3:A:1569:PEG:H41	6:A:2247:HOH:O	2.05	0.56
1:A:364:SER:CB	3:A:1569:PEG:H42	2.33	0.54
1:A:81:LEU:HD21	1:A:110[B]:MET:HE2	1.90	0.54
1:A:434:PRO:O	1:A:533:LEU:HA	2.07	0.54
1:A:540:GLU:OE1	1:A:542:ASP:OD1	2.28	0.52
1:A:493:TYR:C	1:A:493:TYR:CD1	2.84	0.50
1:A:64:VAL:CG2	1:A:110[B]:MET:SD	2.93	0.50
1:A:369:LYS:HA	1:A:372:LYS:HD2	1.96	0.48
1:A:392:PHE:CD1	1:A:418:TYR:HB3	2.49	0.47
1:A:74:GLY:HA2	6:A:2081:HOH:O	2.14	0.47
1:A:126:THR:HG21	3:A:1568:PEG:C1	2.45	0.47

Continued on next page...

Continued from previous page...

Atom-1	Atom-2	Interatomic distance (Å)	Clash overlap (Å)
1:A:110[B]:MET:HG3	1:A:111:GLN:N	2.28	0.47
1:A:493:TYR:OH	1:A:517:ASP:OD2	2.27	0.47
1:A:110[B]:MET:CE	1:A:128:ILE:HD13	2.45	0.45
1:A:490:GLU:OE2	1:A:508:SER:HB3	2.17	0.45
1:A:299:GLU:CD	2:A:1563:DIO:H21	2.37	0.45
1:A:335:TYR:HE2	3:A:1569:PEG:H22	1.79	0.45
1:A:247:ASP:HA	1:A:248:PRO:HD3	1.81	0.44
1:A:372:LYS:HZ2	1:A:372:LYS:HG2	1.61	0.43
1:A:81:LEU:CD2	1:A:110[B]:MET:HE2	2.48	0.43
1:A:110[B]:MET:HE3	1:A:128:ILE:HD13	2.01	0.43
1:A:193:PRO:HD2	1:A:227:SER:O	2.19	0.43
1:A:549:LEU:HD12	1:A:549:LEU:HA	1.85	0.43
1:A:194:ILE:HB	1:A:280:PRO:HG2	2.01	0.43
1:A:363:ILE:CG2	3:A:1569:PEG:H21	2.45	0.42
1:A:362:ALA:O	3:A:1569:PEG:H12	2.20	0.42
1:A:521:VAL:HG21	1:A:548:ILE:HG23	2.02	0.42
3:A:1568:PEG:H22	3:A:1568:PEG:H41	1.87	0.42
1:A:368:ASP:N	1:A:368:ASP:OD1	2.53	0.42
1:A:401:LEU:HD22	1:A:448:TRP:CE2	2.54	0.41
1:A:365:ALA:HA	1:A:387:LEU:HD11	2.03	0.41
1:A:66:TRP:CZ2	1:A:96:GLY:HA3	2.56	0.41
1:A:146:LEU:O	1:A:147:GLU:C	2.59	0.40

There are no symmetry-related clashes.

5.3 Torsion angles [i](#)

5.3.1 Protein backbone [i](#)

In the following table, the Percentiles column shows the percent Ramachandran outliers of the chain as a percentile score with respect to all X-ray entries followed by that with respect to entries of similar resolution.

The Analysed column shows the number of residues for which the backbone conformation was analysed, and the total number of residues.

Mol	Chain	Analysed	Favoured	Allowed	Outliers	Percentiles
1	A	539/548 (98%)	524 (97%)	15 (3%)	0	100 100

There are no Ramachandran outliers to report.

5.3.2 Protein sidechains ⓘ

In the following table, the Percentiles column shows the percent sidechain outliers of the chain as a percentile score with respect to all X-ray entries followed by that with respect to entries of similar resolution.

The Analysed column shows the number of residues for which the sidechain conformation was analysed, and the total number of residues.

Mol	Chain	Analysed	Rotameric	Outliers	Percentiles
1	A	430/439 (98%)	422 (98%)	8 (2%)	57 75

All (8) residues with a non-rotameric sidechain are listed below:

Mol	Chain	Res	Type
1	A	328	SER
1	A	343	ARG
1	A	356	LYS
1	A	404	GLN
1	A	455	GLN
1	A	469	LYS
1	A	516	ASP
1	A	562	VAL

Some sidechains can be flipped to improve hydrogen bonding and reduce clashes. All (6) such sidechains are listed below:

Mol	Chain	Res	Type
1	A	58	ASN
1	A	154	GLN
1	A	173	ASN
1	A	252	ASN
1	A	261	GLN
1	A	404	GLN

5.3.3 RNA ⓘ

There are no RNA molecules in this entry.

5.4 Non-standard residues in protein, DNA, RNA chains ⓘ

There are no non-standard protein/DNA/RNA residues in this entry.

5.5 Carbohydrates [i](#)

There are no monosaccharides in this entry.

5.6 Ligand geometry [i](#)

10 ligands are modelled in this entry.

In the following table, the Counts columns list the number of bonds (or angles) for which Mogul statistics could be retrieved, the number of bonds (or angles) that are observed in the model and the number of bonds (or angles) that are defined in the Chemical Component Dictionary. The Link column lists molecule types, if any, to which the group is linked. The Z score for a bond length (or angle) is the number of standard deviations the observed value is removed from the expected value. A bond length (or angle) with $|Z| > 2$ is considered an outlier worth inspection. RMSZ is the root-mean-square of all Z scores of the bond lengths (or angles).

Mol	Type	Chain	Res	Link	Bond lengths			Bond angles		
					Counts	RMSZ	$\# Z > 2$	Counts	RMSZ	$\# Z > 2$
2	DIO	A	1566	-	6,6,6	0.59	0	6,6,6	0.87	0
2	DIO	A	1565	-	6,6,6	0.55	0	6,6,6	1.51	1 (16%)
3	PEG	A	1570	-	6,6,6	0.78	0	5,5,5	0.52	0
5	NGT	A	1572	4	13,15,15	3.25	2 (15%)	12,22,22	1.79	3 (25%)
2	DIO	A	1564	-	6,6,6	0.64	0	6,6,6	1.42	1 (16%)
4	SN5	A	1571	5	12,14,15	1.44	1 (8%)	15,19,21	1.91	6 (40%)
2	DIO	A	1563	-	6,6,6	0.65	0	6,6,6	0.83	0
3	PEG	A	1569	-	6,6,6	1.48	2 (33%)	5,5,5	2.00	2 (40%)
2	DIO	A	1567	-	6,6,6	0.61	0	6,6,6	1.47	1 (16%)
3	PEG	A	1568	-	6,6,6	1.02	0	5,5,5	0.93	0

In the following table, the Chirals column lists the number of chiral outliers, the number of chiral centers analysed, the number of these observed in the model and the number defined in the Chemical Component Dictionary. Similar counts are reported in the Torsion and Rings columns. '-' means no outliers of that kind were identified.

Mol	Type	Chain	Res	Link	Chirals	Torsions	Rings
2	DIO	A	1566	-	-	-	0/1/1/1
2	DIO	A	1565	-	-	-	0/1/1/1
3	PEG	A	1570	-	-	2/4/4/4	-
5	NGT	A	1572	4	-	2/2/30/30	0/2/2/2
2	DIO	A	1564	-	-	-	0/1/1/1
4	SN5	A	1571	5	-	0/6/23/26	0/1/1/1
2	DIO	A	1563	-	-	-	0/1/1/1
3	PEG	A	1569	-	-	3/4/4/4	-

Continued on next page...

Continued from previous page...

Mol	Type	Chain	Res	Link	Chirals	Torsions	Rings
2	DIO	A	1567	-	-	-	0/1/1/1
3	PEG	A	1568	-	-	3/4/4/4	-

All (5) bond length outliers are listed below:

Mol	Chain	Res	Type	Atoms	Z	Observed(Å)	Ideal(Å)
5	A	1572	NGT	C7-S1	-11.09	1.67	1.77
4	A	1571	SN5	C7-N2	3.88	1.37	1.32
3	A	1569	PEG	O2-C3	2.17	1.51	1.42
5	A	1572	NGT	C4-C3	2.06	1.57	1.52
3	A	1569	PEG	O4-C4	2.02	1.52	1.42

All (14) bond angle outliers are listed below:

Mol	Chain	Res	Type	Atoms	Z	Observed(°)	Ideal(°)
4	A	1571	SN5	O3-C3-C4	-4.86	99.10	110.35
2	A	1565	DIO	C2'-O1'-C1'	3.20	120.59	109.89
5	A	1572	NGT	C8-C7-S1	3.07	123.59	118.96
2	A	1567	DIO	C2'-O1'-C1'	3.03	120.02	109.89
2	A	1564	DIO	C2'-O1'-C1'	2.77	119.15	109.89
5	A	1572	NGT	O4-C4-C5	-2.76	102.45	109.30
3	A	1569	PEG	C3-O2-C2	2.75	125.21	113.29
4	A	1571	SN5	S7-C7-N2	-2.73	121.42	124.54
5	A	1572	NGT	C1-O5-C5	2.49	117.17	112.58
4	A	1571	SN5	C3-C4-C5	2.30	114.34	110.24
4	A	1571	SN5	O4-C4-C3	-2.29	105.06	110.35
3	A	1569	PEG	O2-C3-C4	2.12	119.39	110.07
4	A	1571	SN5	C1-C2-N2	-2.05	106.99	110.49
4	A	1571	SN5	O5-C5-C6	2.02	110.36	107.20

There are no chirality outliers.

All (10) torsion outliers are listed below:

Mol	Chain	Res	Type	Atoms
3	A	1569	PEG	C1-C2-O2-C3
3	A	1568	PEG	C4-C3-O2-C2
3	A	1570	PEG	O2-C3-C4-O4
3	A	1570	PEG	O1-C1-C2-O2
5	A	1572	NGT	C4-C5-C6-O6
3	A	1568	PEG	O2-C3-C4-O4
3	A	1568	PEG	O1-C1-C2-O2

Continued on next page...

Continued from previous page...

Mol	Chain	Res	Type	Atoms
5	A	1572	NGT	O5-C5-C6-O6
3	A	1569	PEG	O2-C3-C4-O4
3	A	1569	PEG	C4-C3-O2-C2

There are no ring outliers.

3 monomers are involved in 13 short contacts:

Mol	Chain	Res	Type	Clashes	Symm-Clashes
2	A	1563	DIO	2	0
3	A	1569	PEG	9	0
3	A	1568	PEG	2	0

5.7 Other polymers [i](#)

There are no such residues in this entry.

5.8 Polymer linkage issues [i](#)

There are no chain breaks in this entry.

6 Fit of model and data [i](#)

6.1 Protein, DNA and RNA chains [i](#)

In the following table, the column labelled ‘#RSRZ> 2’ contains the number (and percentage) of RSRZ outliers, followed by percent RSRZ outliers for the chain as percentile scores relative to all X-ray entries and entries of similar resolution. The OWAB column contains the minimum, median, 95th percentile and maximum values of the occupancy-weighted average B-factor per residue. The column labelled ‘Q< 0.9’ lists the number of (and percentage) of residues with an average occupancy less than 0.9.

Mol	Chain	Analysed	<RSRZ>	#RSRZ>2	OWAB(Å ²)	Q<0.9
1	A	539/548 (98%)	-0.65	4 (0%) 87 86	11, 22, 41, 61	0

All (4) RSRZ outliers are listed below:

Mol	Chain	Res	Type	RSRZ
1	A	562	VAL	5.0
1	A	208	GLU	2.4
1	A	415	ASP	2.1
1	A	455	GLN	2.1

6.2 Non-standard residues in protein, DNA, RNA chains [i](#)

There are no non-standard protein/DNA/RNA residues in this entry.

6.3 Carbohydrates [i](#)

There are no monosaccharides in this entry.

6.4 Ligands [i](#)

In the following table, the Atoms column lists the number of modelled atoms in the group and the number defined in the chemical component dictionary. The B-factors column lists the minimum, median, 95th percentile and maximum values of B factors of atoms in the group. The column labelled ‘Q< 0.9’ lists the number of atoms with occupancy less than 0.9.

Mol	Type	Chain	Res	Atoms	RSCC	RSR	B-factors(Å ²)	Q<0.9
2	DIO	A	1567	6/6	0.76	0.26	82,83,84,85	0
3	PEG	A	1568	7/7	0.84	0.18	32,43,49,49	0
2	DIO	A	1565	6/6	0.86	0.17	67,69,70,71	0

Continued on next page...

Continued from previous page...

Mol	Type	Chain	Res	Atoms	RSCC	RSR	B-factors(\AA^2)	Q<0.9
3	PEG	A	1569	7/7	0.86	0.23	32,35,36,40	0
2	DIO	A	1564	6/6	0.87	0.18	69,71,71,71	0
2	DIO	A	1563	6/6	0.94	0.18	48,50,52,53	0
3	PEG	A	1570	7/7	0.94	0.16	33,39,43,45	0
2	DIO	A	1566	6/6	0.95	0.16	62,62,63,64	0
5	NGT	A	1572	14/14	0.98	0.14	14,21,25,26	0
4	SN5	A	1571	14/15	0.98	0.07	19,25,29,36	0

6.5 Other polymers [i](#)

There are no such residues in this entry.