



# Full wwPDB X-ray Structure Validation Report ⓘ

May 15, 2020 – 11:50 pm BST

PDB ID : 4WN5  
Title : Crystal structure of the C-terminal Per-Arnt-Sim (PASb) of human HIF-3alpha9 bound to 18:1-1-monoacylglycerol  
Authors : Fala, A.M.; Oliveira, J.F.; Dias, S.M.; Ambrosio, A.L.  
Deposited on : 2014-10-10  
Resolution : 1.15 Å(reported)

This is a Full wwPDB X-ray Structure Validation Report for a publicly released PDB entry.

We welcome your comments at [validation@mail.wwpdb.org](mailto:validation@mail.wwpdb.org)

A user guide is available at

<https://www.wwpdb.org/validation/2017/XrayValidationReportHelp>

with specific help available everywhere you see the ⓘ symbol.

---

The following versions of software and data (see [references ⓘ](#)) were used in the production of this report:

MolProbity : 4.02b-467  
Mogul : 1.8.5 (274361), CSD as541be (2020)  
Xtriage (Phenix) : 1.13  
EDS : 2.11  
buster-report : 1.1.7 (2018)  
Percentile statistics : 20191225.v01 (using entries in the PDB archive December 25th 2019)  
Refmac : 5.8.0158  
CCP4 : 7.0.044 (Gargrove)  
Ideal geometry (proteins) : Engh & Huber (2001)  
Ideal geometry (DNA, RNA) : Parkinson et al. (1996)  
Validation Pipeline (wwPDB-VP) : 2.11

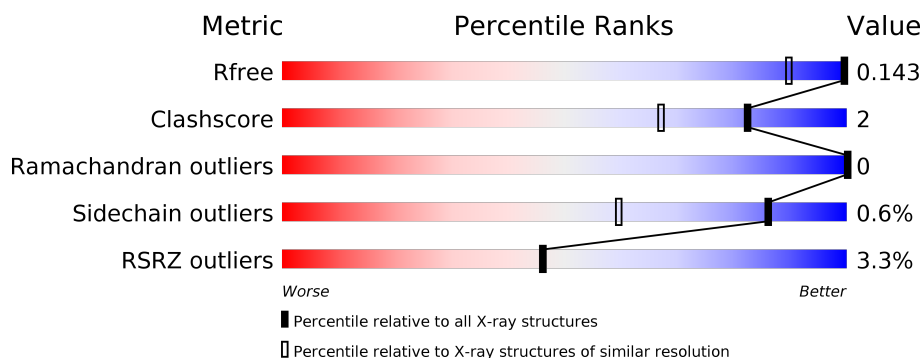
# 1 Overall quality at a glance

The following experimental techniques were used to determine the structure:

## *X-RAY DIFFRACTION*

The reported resolution of this entry is 1.15 Å.

Percentile scores (ranging between 0-100) for global validation metrics of the entry are shown in the following graphic. The table shows the number of entries on which the scores are based.



Metric	Whole archive (#Entries)	Similar resolution (#Entries, resolution range(Å))
$R_{free}$	130704	1492 (1.18-1.10)
Clashscore	141614	1537 (1.18-1.10)
Ramachandran outliers	138981	1483 (1.18-1.10)
Sidechain outliers	138945	1480 (1.18-1.10)
RSRZ outliers	127900	1464 (1.18-1.10)

The table below summarises the geometric issues observed across the polymeric chains and their fit to the electron density. The red, orange, yellow and green segments on the lower bar indicate the fraction of residues that contain outliers for  $\geq 3$ , 2, 1 and 0 types of geometric quality criteria respectively. A grey segment represents the fraction of residues that are not modelled. The numeric value for each fraction is indicated below the corresponding segment, with a dot representing fractions  $\leq 5\%$ . The upper red bar (where present) indicates the fraction of residues that have poor fit to the electron density. The numeric value is given above the bar.

Mol	Chain	Length	Quality of chain
1	A	115	<div> <div>3%</div> <div>90%</div> <div>6%</div> </div>
1	B	115	<div> <div>3%</div> <div>89%</div> <div>9%</div> </div>

The following table lists non-polymeric compounds, carbohydrate monomers and non-standard residues in protein, DNA, RNA chains that are outliers for geometric or electron-density-fit criteria:

Mol	Type	Chain	Res	Chirality	Geometry	Clashes	Electron density
3	MVC	A	402	X	-	-	-
3	MVC	B	402	X	-	-	-

## 2 Entry composition

There are 5 unique types of molecules in this entry. The entry contains 3957 atoms, of which 1825 are hydrogens and 0 are deuteriums.

In the tables below, the ZeroOcc column contains the number of atoms modelled with zero occupancy, the AltConf column contains the number of residues with at least one atom in alternate conformation and the Trace column contains the number of residues modelled with at most 2 atoms.

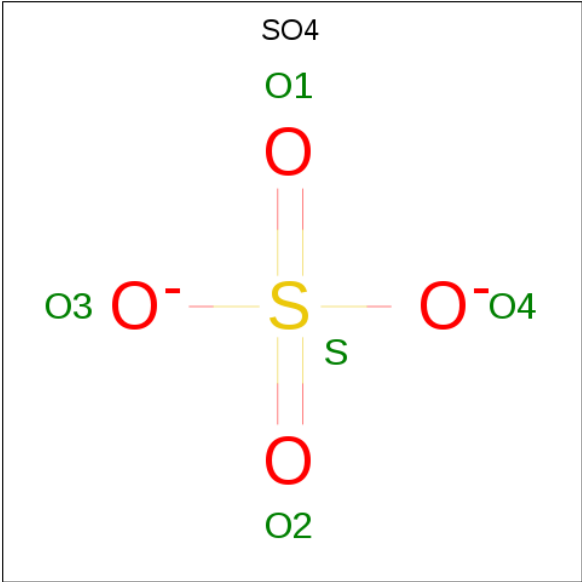
- Molecule 1 is a protein called Hypoxia-inducible factor 3-alpha.

Mol	Chain	Residues	Atoms						ZeroOcc	AltConf	Trace
1	A	108	Total	C	H	N	O	S	3	4	0
			1660	531	813	147	163	6			
1	B	105	Total	C	H	N	O	S	0	6	0
			1637	524	802	142	165	4			

There are 8 discrepancies between the modelled and reference sequences:

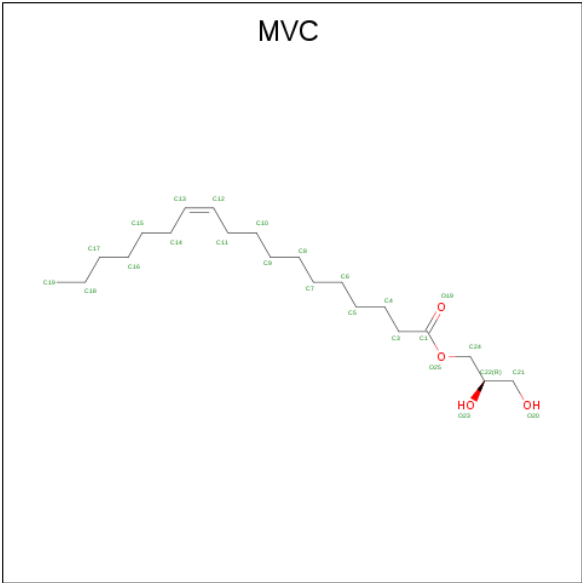
Chain	Residue	Modelled	Actual	Comment	Reference
A	233	GLY	-	expression tag	UNP Q9Y2N7
A	234	SER	-	expression tag	UNP Q9Y2N7
A	235	HIS	-	expression tag	UNP Q9Y2N7
A	236	MET	-	expression tag	UNP Q9Y2N7
B	233	GLY	-	expression tag	UNP Q9Y2N7
B	234	SER	-	expression tag	UNP Q9Y2N7
B	235	HIS	-	expression tag	UNP Q9Y2N7
B	236	MET	-	expression tag	UNP Q9Y2N7

- Molecule 2 is SULFATE ION (three-letter code: SO4) (formula: O<sub>4</sub>S).



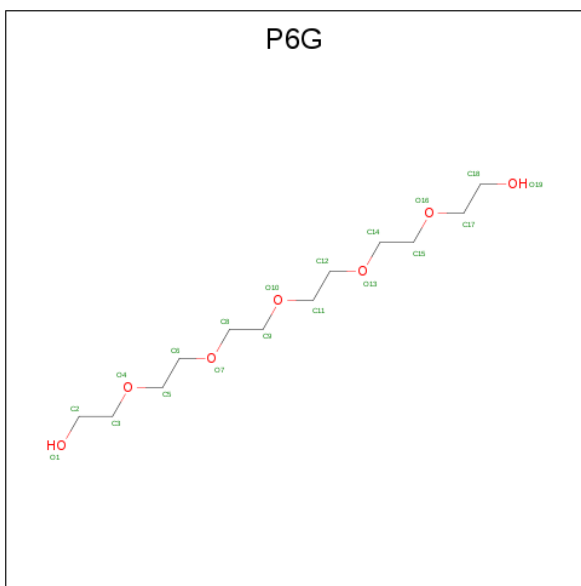
Mol	Chain	Residues	Atoms			ZeroOcc	AltConf
2	A	1	Total	O	S	0	0
			5	4	1		
2	B	1	Total	O	S	0	0
			5	4	1		

- Molecule 3 is MONOVACCENIN (three-letter code: MVC) (formula: C<sub>21</sub>H<sub>40</sub>O<sub>4</sub>).



Mol	Chain	Residues	Atoms				ZeroOcc	AltConf
3	A	1	Total	C	H	O	0	0
			65	21	40	4		
3	B	1	Total	C	H	O	0	0
			65	21	40	4		

- Molecule 4 is HEXAETHYLENE GLYCOL (three-letter code: P6G) (formula:  $C_{12}H_{26}O_7$ ).



Mol	Chain	Residues	Atoms				ZeroOcc	AltConf
4	A	1	Total	C	H	O	0	0
			45	12	26	7		
4	A	1	Total	C	H	O	0	0
			45	12	26	7		
4	A	1	Total	C	H	O	0	0
			45	12	26	7		
4	B	1	Total	C	H	O	0	0
			45	12	26	7		
4	B	1	Total	C	H	O	0	0
			45	12	26	7		

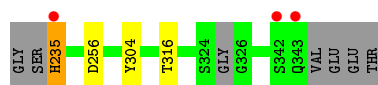
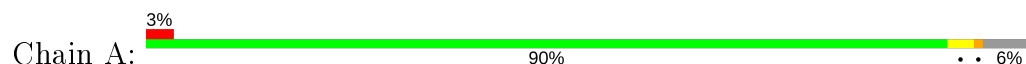
- Molecule 5 is water.

Mol	Chain	Residues	Atoms		ZeroOcc	AltConf
5	A	153	Total	O	0	0
			153	153		
5	B	142	Total	O	0	0
			142	142		

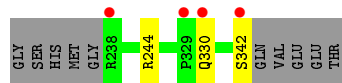
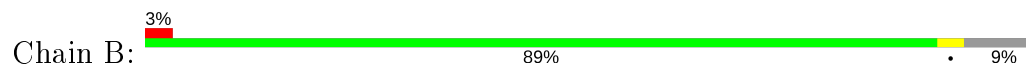
### 3 Residue-property plots [i](#)

These plots are drawn for all protein, RNA and DNA chains in the entry. The first graphic for a chain summarises the proportions of the various outlier classes displayed in the second graphic. The second graphic shows the sequence view annotated by issues in geometry and electron density. Residues are color-coded according to the number of geometric quality criteria for which they contain at least one outlier: green = 0, yellow = 1, orange = 2 and red = 3 or more. A red dot above a residue indicates a poor fit to the electron density ( $RSRZ > 2$ ). Stretches of 2 or more consecutive residues without any outlier are shown as a green connector. Residues present in the sample, but not in the model, are shown in grey.

- Molecule 1: Hypoxia-inducible factor 3-alpha



- Molecule 1: Hypoxia-inducible factor 3-alpha



## 4 Data and refinement statistics

Property	Value	Source
Space group	P 21 2 21	Depositor
Cell constants a, b, c, $\alpha$ , $\beta$ , $\gamma$	52.65Å 53.89Å 67.79Å 90.00° 90.00° 90.00°	Depositor
Resolution (Å)	28.50 – 1.15 28.50 – 1.15	Depositor EDS
% Data completeness (in resolution range)	99.3 (28.50-1.15) 99.4 (28.50-1.15)	Depositor EDS
$R_{merge}$	(Not available)	Depositor
$R_{sym}$	(Not available)	Depositor
$\langle I/\sigma(I) \rangle$ <sup>1</sup>	11.31 (at 1.15Å)	Xtriage
Refinement program	PHENIX (phenix.refine: 1.8.4_1496)	Depositor
R, $R_{free}$	0.122 , 0.141 0.125 , 0.143	Depositor DCC
$R_{free}$ test set	3480 reflections (5.06%)	wwPDB-VP
Wilson B-factor (Å <sup>2</sup> )	8.2	Xtriage
Anisotropy	0.150	Xtriage
Bulk solvent $k_{sol}$ (e/Å <sup>3</sup> ), $B_{sol}$ (Å <sup>2</sup> )	0.43 , 57.4	EDS
L-test for twinning <sup>2</sup>	$\langle  L  \rangle = 0.48$ , $\langle L^2 \rangle = 0.31$	Xtriage
Estimated twinning fraction	0.016 for k,h,-l	Xtriage
$F_o, F_c$ correlation	0.98	EDS
Total number of atoms	3957	wwPDB-VP
Average B, all atoms (Å <sup>2</sup> )	13.0	wwPDB-VP

Xtriage's analysis on translational NCS is as follows: *The largest off-origin peak in the Patterson function is 8.99% of the height of the origin peak. No significant pseudotranslation is detected.*

<sup>1</sup>Intensities estimated from amplitudes.

<sup>2</sup>Theoretical values of  $\langle |L| \rangle$ ,  $\langle L^2 \rangle$  for acentric reflections are 0.5, 0.333 respectively for untwinned datasets, and 0.375, 0.2 for perfectly twinned datasets.



## 5 Model quality

### 5.1 Standard geometry

Bond lengths and bond angles in the following residue types are not validated in this section: MVC, SO4, P6G

The Z score for a bond length (or angle) is the number of standard deviations the observed value is removed from the expected value. A bond length (or angle) with  $|Z| > 5$  is considered an outlier worth inspection. RMSZ is the root-mean-square of all Z scores of the bond lengths (or angles).

Mol	Chain	Bond lengths		Bond angles	
		RMSZ	# Z  >5	RMSZ	# Z  >5
1	A	0.55	0/870	0.67	0/1175
1	B	0.51	0/864	0.64	0/1169
All	All	0.53	0/1734	0.65	0/2344

There are no bond length outliers.

There are no bond angle outliers.

There are no chirality outliers.

There are no planarity outliers.

### 5.2 Too-close contacts

In the following table, the Non-H and H(model) columns list the number of non-hydrogen atoms and hydrogen atoms in the chain respectively. The H(added) column lists the number of hydrogen atoms added and optimized by MolProbity. The Clashes column lists the number of clashes within the asymmetric unit, whereas Symm-Clashes lists symmetry related clashes.

Mol	Chain	Non-H	H(model)	H(added)	Clashes	Symm-Clashes
1	A	847	813	809	4	0
1	B	835	802	808	5	1
2	A	5	0	0	1	0
2	B	5	0	0	0	0
3	A	25	40	40	0	0
3	B	25	40	40	0	0
4	A	57	78	78	0	0
4	B	38	52	52	3	0
5	A	153	0	0	1	1
5	B	142	0	0	2	0
All	All	2132	1825	1827	9	1

The all-atom clashscore is defined as the number of clashes found per 1000 atoms (including hydrogen atoms). The all-atom clashscore for this structure is 2.

All (9) close contacts within the same asymmetric unit are listed below, sorted by their clash magnitude.

Atom-1	Atom-2	Interatomic distance (Å)	Clash overlap (Å)
1:B:244:ARG:HD3	4:B:404:P6G:H31	1.63	0.79
1:B:342:SER:O	5:B:639:HOH:O	2.06	0.74
1:A:256[B]:ASP:OD1	5:A:501:HOH:O	2.06	0.73
1:B:244:ARG:NH1	4:B:404:P6G:H32	2.15	0.61
1:A:235:HIS:N	2:A:401:SO4:O3	2.44	0.50
1:B:330:GLN:O	5:B:501:HOH:O	2.20	0.46
1:B:244:ARG:HH11	4:B:404:P6G:H32	1.82	0.45
1:A:235:HIS:CD2	1:A:235:HIS:N	2.87	0.42
1:A:304:TYR:CZ	1:A:316[A]:THR:HG23	2.56	0.40

All (1) symmetry-related close contacts are listed below. The label for Atom-2 includes the symmetry operator and encoded unit-cell translations to be applied.

Atom-1	Atom-2	Interatomic distance (Å)	Clash overlap (Å)
1:B:330:GLN:OE1	5:A:564:HOH:O[1_545]	1.83	0.37

## 5.3 Torsion angles [i](#)

### 5.3.1 Protein backbone [i](#)

In the following table, the Percentiles column shows the percent Ramachandran outliers of the chain as a percentile score with respect to all X-ray entries followed by that with respect to entries of similar resolution.

The Analysed column shows the number of residues for which the backbone conformation was analysed, and the total number of residues.

Mol	Chain	Analysed	Favoured	Allowed	Outliers	Percentiles	
1	A	107/115 (93%)	107 (100%)	0	0	100	100
1	B	109/115 (95%)	109 (100%)	0	0	100	100
All	All	216/230 (94%)	216 (100%)	0	0	100	100

There are no Ramachandran outliers to report.

### 5.3.2 Protein sidechains [i](#)

In the following table, the Percentiles column shows the percent sidechain outliers of the chain as a percentile score with respect to all X-ray entries followed by that with respect to entries of similar resolution.

The Analysed column shows the number of residues for which the sidechain conformation was analysed, and the total number of residues.

Mol	Chain	Analysed	Rotameric	Outliers	Percentiles	
1	A	92/94 (98%)	91 (99%)	1 (1%)	73	38
1	B	92/94 (98%)	92 (100%)	0	100	100
All	All	184/188 (98%)	183 (100%)	1 (0%)	86	64

All (1) residues with a non-rotameric sidechain are listed below:

Mol	Chain	Res	Type
1	A	235	HIS

Some sidechains can be flipped to improve hydrogen bonding and reduce clashes. All (1) such sidechains are listed below:

Mol	Chain	Res	Type
1	A	235	HIS

### 5.3.3 RNA [i](#)

There are no RNA molecules in this entry.

## 5.4 Non-standard residues in protein, DNA, RNA chains [i](#)

There are no non-standard protein/DNA/RNA residues in this entry.

## 5.5 Carbohydrates [i](#)

There are no carbohydrates in this entry.

## 5.6 Ligand geometry [i](#)

9 ligands are modelled in this entry.

In the following table, the Counts columns list the number of bonds (or angles) for which Mogul statistics could be retrieved, the number of bonds (or angles) that are observed in the model and the number of bonds (or angles) that are defined in the Chemical Component Dictionary. The Link column lists molecule types, if any, to which the group is linked. The Z score for a bond length (or angle) is the number of standard deviations the observed value is removed from the expected value. A bond length (or angle) with  $|Z| > 2$  is considered an outlier worth inspection. RMSZ is the root-mean-square of all Z scores of the bond lengths (or angles).

Mol	Type	Chain	Res	Link	Bond lengths			Bond angles		
					Counts	RMSZ	# $ Z  > 2$	Counts	RMSZ	# $ Z  > 2$
3	MVC	A	402	-	24,24,24	0.62	0	25,25,25	0.33	0
4	P6G	A	403	-	18,18,18	0.77	0	17,17,17	0.54	0
2	SO4	A	401	-	4,4,4	0.45	0	6,6,6	0.79	0
2	SO4	B	401	-	4,4,4	0.13	0	6,6,6	0.28	0
4	P6G	B	403	-	18,18,18	0.86	1 (5%)	17,17,17	0.52	0
3	MVC	B	402	-	24,24,24	0.66	1 (4%)	25,25,25	0.31	0
4	P6G	B	404	-	18,18,18	1.04	0	17,17,17	2.16	5 (29%)
4	P6G	A	404	-	18,18,18	0.72	0	17,17,17	0.42	0
4	P6G	A	405	-	18,18,18	0.85	1 (5%)	17,17,17	0.52	0

In the following table, the Chirals column lists the number of chiral outliers, the number of chiral centers analysed, the number of these observed in the model and the number defined in the Chemical Component Dictionary. Similar counts are reported in the Torsion and Rings columns. '-' means no outliers of that kind were identified.

Mol	Type	Chain	Res	Link	Chirals	Torsions	Rings
3	MVC	A	402	-	1/1/4/4	0/24/24/24	-
4	P6G	A	403	-	-	2/16/16/16	-
4	P6G	B	403	-	-	10/16/16/16	-
3	MVC	B	402	-	1/1/4/4	0/24/24/24	-
4	P6G	B	404	-	-	10/16/16/16	-
4	P6G	A	404	-	-	5/16/16/16	-
4	P6G	A	405	-	-	11/16/16/16	-

All (3) bond length outliers are listed below:

Mol	Chain	Res	Type	Atoms	Z	Observed(Å)	Ideal(Å)
3	B	402	MVC	O25-C1	2.22	1.39	1.33
4	B	403	P6G	C12-C11	2.11	1.59	1.49
4	A	405	P6G	C12-C11	2.06	1.59	1.49

All (5) bond angle outliers are listed below:

Mol	Chain	Res	Type	Atoms	Z	Observed(°)	Ideal(°)
4	B	404	P6G	O10-C11-C12	4.70	131.57	110.39
4	B	404	P6G	O10-C9-C8	4.69	131.53	110.39
4	B	404	P6G	O16-C17-C18	3.24	124.30	110.07
4	B	404	P6G	O4-C3-C2	3.15	123.90	110.07
4	B	404	P6G	O13-C14-C15	2.04	119.60	110.39

All (2) chirality outliers are listed below:

Mol	Chain	Res	Type	Atom
3	A	402	MVC	C22
3	B	402	MVC	C22

All (38) torsion outliers are listed below:

Mol	Chain	Res	Type	Atoms
4	A	405	P6G	C11-C12-O13-C14
4	A	404	P6G	O1-C2-C3-O4
4	A	405	P6G	O1-C2-C3-O4
4	A	405	P6G	O16-C17-C18-O19
4	B	403	P6G	C9-C8-O7-C6
4	B	403	P6G	C11-C12-O13-C14
4	A	405	P6G	C9-C8-O7-C6
4	B	403	P6G	O1-C2-C3-O4
4	A	404	P6G	O16-C17-C18-O19
4	B	404	P6G	O13-C14-C15-O16
4	B	404	P6G	O4-C5-C6-O7
4	B	404	P6G	O10-C11-C12-O13
4	B	404	P6G	O7-C8-C9-O10
4	A	404	P6G	O7-C8-C9-O10
4	B	403	P6G	C5-C6-O7-C8
4	B	404	P6G	C8-C9-O10-C11
4	B	404	P6G	C12-C11-O10-C9
4	A	405	P6G	C15-C14-O13-C12
4	A	405	P6G	C5-C6-O7-C8
4	B	403	P6G	C15-C14-O13-C12
4	A	403	P6G	C15-C14-O13-C12
4	A	404	P6G	C8-C9-O10-C11
4	A	404	P6G	O4-C5-C6-O7
4	A	403	P6G	C2-C3-O4-C5
4	B	404	P6G	C6-C5-O4-C3
4	A	405	P6G	C8-C9-O10-C11
4	B	404	P6G	C14-C15-O16-C17
4	A	405	P6G	O10-C11-C12-O13

*Continued on next page...*

*Continued from previous page...*

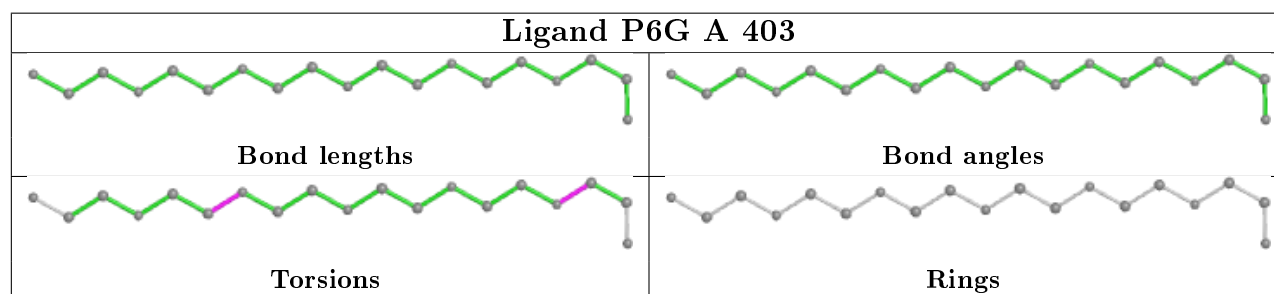
Mol	Chain	Res	Type	Atoms
4	B	403	P6G	O4-C5-C6-O7
4	B	403	P6G	C12-C11-O10-C9
4	A	405	P6G	O4-C5-C6-O7
4	A	405	P6G	O13-C14-C15-O16
4	B	403	P6G	O13-C14-C15-O16
4	A	405	P6G	O7-C8-C9-O10
4	B	404	P6G	C9-C8-O7-C6
4	B	403	P6G	O10-C11-C12-O13
4	B	404	P6G	C11-C12-O13-C14
4	B	403	P6G	O7-C8-C9-O10

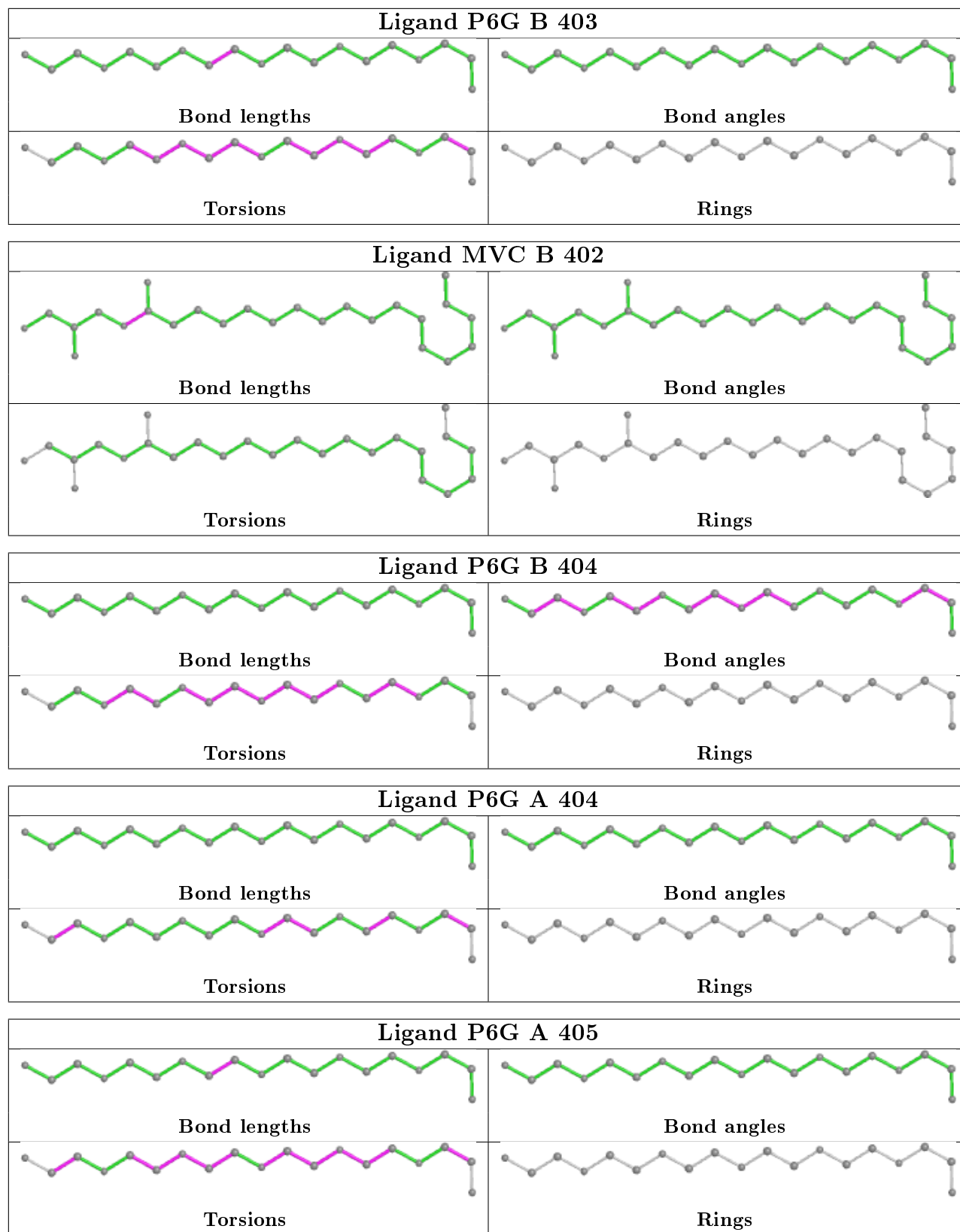
There are no ring outliers.

2 monomers are involved in 4 short contacts:

Mol	Chain	Res	Type	Clashes	Symm-Clashes
2	A	401	SO4	1	0
4	B	404	P6G	3	0

The following is a two-dimensional graphical depiction of Mogul quality analysis of bond lengths, bond angles, torsion angles, and ring geometry for all instances of the Ligand of Interest. In addition, ligands with molecular weight > 250 and outliers as shown on the validation Tables will also be included. For torsion angles, if less than 5% of the Mogul distribution of torsion angles is within 10 degrees of the torsion angle in question, then that torsion angle is considered an outlier. Any bond that is central to one or more torsion angles identified as an outlier by Mogul will be highlighted in the graph. For rings, the root-mean-square deviation (RMSD) between the ring in question and similar rings identified by Mogul is calculated over all ring torsion angles. If the average RMSD is greater than 60 degrees and the minimal RMSD between the ring in question and any Mogul-identified rings is also greater than 60 degrees, then that ring is considered an outlier. The outliers are highlighted in purple. The color gray indicates Mogul did not find sufficient equivalents in the CSD to analyse the geometry.





## 5.7 Other polymers

There are no such residues in this entry.

## 5.8 Polymer linkage issues

There are no chain breaks in this entry.



## 6 Fit of model and data [i](#)

### 6.1 Protein, DNA and RNA chains [i](#)

In the following table, the column labelled ‘#RSRZ> 2’ contains the number (and percentage) of RSRZ outliers, followed by percent RSRZ outliers for the chain as percentile scores relative to all X-ray entries and entries of similar resolution. The OWAB column contains the minimum, median, 95<sup>th</sup> percentile and maximum values of the occupancy-weighted average B-factor per residue. The column labelled ‘Q< 0.9’ lists the number of (and percentage) of residues with an average occupancy less than 0.9.

Mol	Chain	Analysed	<RSRZ>	#RSRZ>2	OWAB(Å <sup>2</sup> )	Q<0.9
1	A	108/115 (93%)	-0.22	3 (2%) 53 51	5, 9, 18, 25	1 (0%)
1	B	105/115 (91%)	-0.06	4 (3%) 40 40	5, 10, 16, 21	2 (1%)
All	All	213/230 (92%)	-0.14	7 (3%) 46 46	5, 9, 17, 25	3 (1%)

All (7) RSRZ outliers are listed below:

Mol	Chain	Res	Type	RSRZ
1	A	343	GLN	3.7
1	B	329	PRO	3.3
1	A	235	HIS	3.2
1	A	342	SER	2.7
1	B	238	ARG	2.6
1	B	342	SER	2.6
1	B	330	GLN	2.5

### 6.2 Non-standard residues in protein, DNA, RNA chains [i](#)

There are no non-standard protein/DNA/RNA residues in this entry.

### 6.3 Carbohydrates [i](#)

There are no carbohydrates in this entry.

### 6.4 Ligands [i](#)

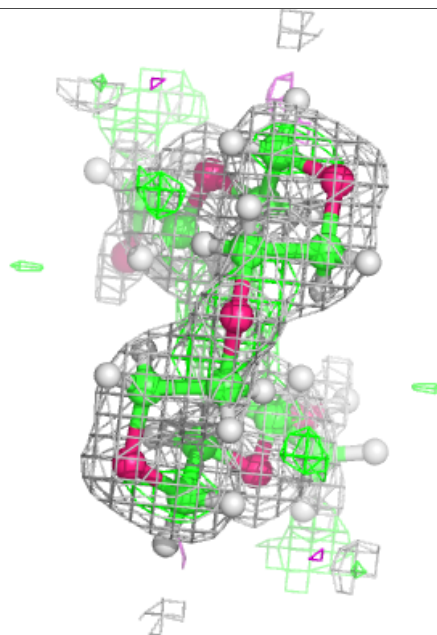
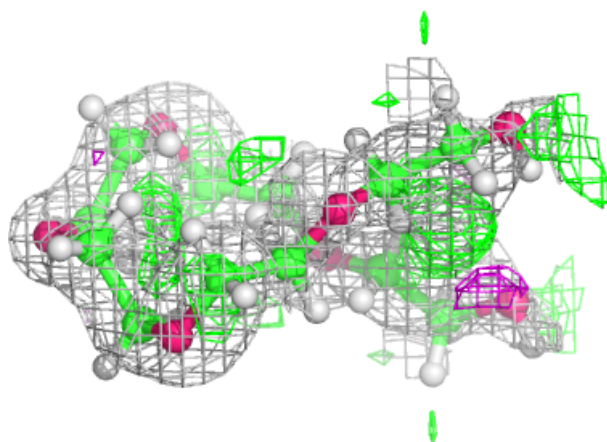
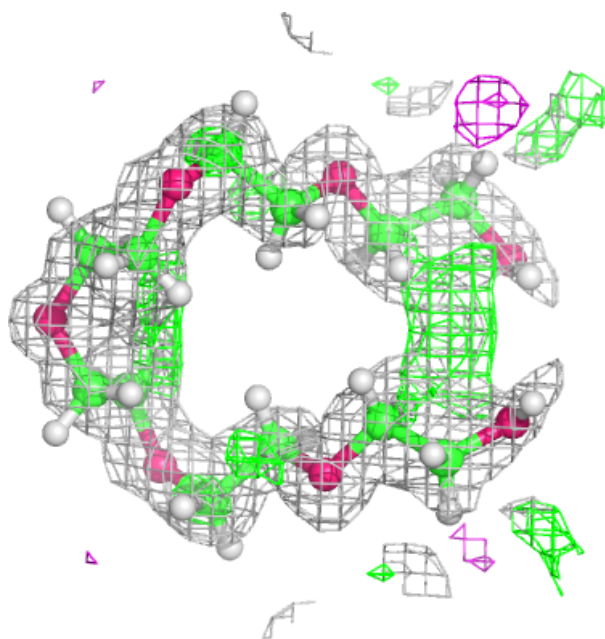
In the following table, the Atoms column lists the number of modelled atoms in the group and the number defined in the chemical component dictionary. The B-factors column lists the minimum, median, 95<sup>th</sup> percentile and maximum values of B factors of atoms in the group. The column labelled ‘Q< 0.9’ lists the number of atoms with occupancy less than 0.9.

Mol	Type	Chain	Res	Atoms	RSCC	RSR	B-factors( $\text{\AA}^2$ )	Q<0.9
4	P6G	B	403	19/19	0.67	0.18	26,31,34,35	45
4	P6G	A	405	19/19	0.68	0.21	20,25,29,31	45
4	P6G	A	404	19/19	0.75	0.33	16,20,24,25	45
4	P6G	B	404	19/19	0.79	0.20	27,33,35,35	45
4	P6G	A	403	19/19	0.92	0.09	17,23,31,32	0
2	SO4	B	401	5/5	0.93	0.18	28,28,28,28	5
3	MVC	B	402	25/25	0.94	0.09	10,12,21,30	0
3	MVC	A	402	25/25	0.95	0.08	7,10,18,25	0
2	SO4	A	401	5/5	0.99	0.10	12,12,15,16	0

The following is a graphical depiction of the model fit to experimental electron density of all instances of the Ligand of Interest. In addition, ligands with molecular weight > 250 and outliers as shown on the geometry validation Tables will also be included. Each fit is shown from different orientation to approximate a three-dimensional view.

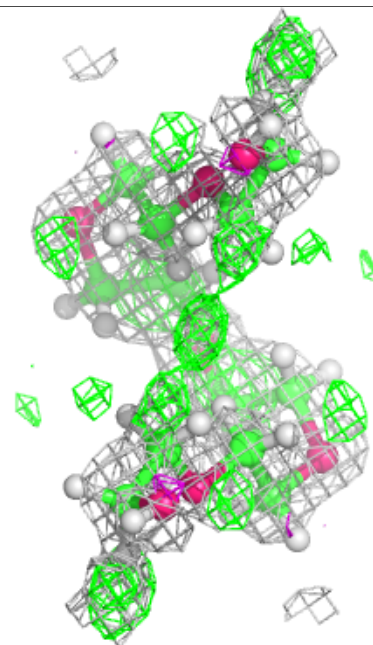
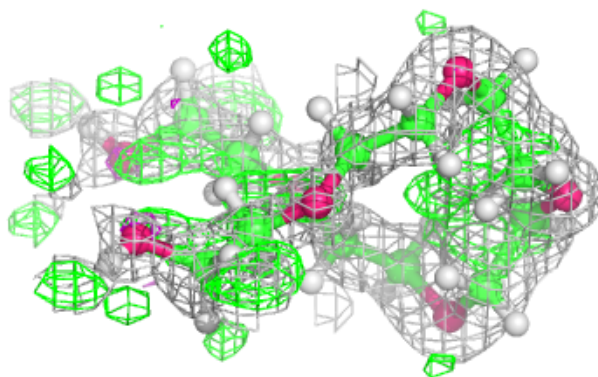
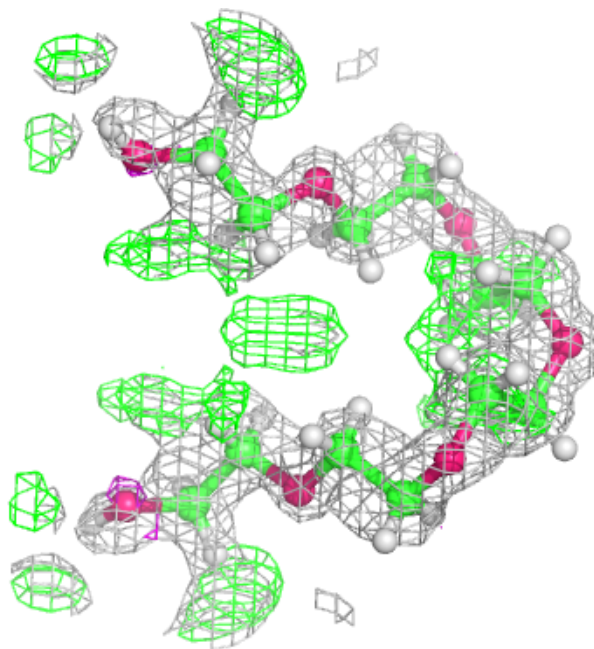
**Electron density around P6G B 403:**

$2mF_o-DF_c$  (at 0.7 rmsd) in gray  
 $mF_o-DF_c$  (at 3 rmsd) in purple (negative)  
and green (positive)



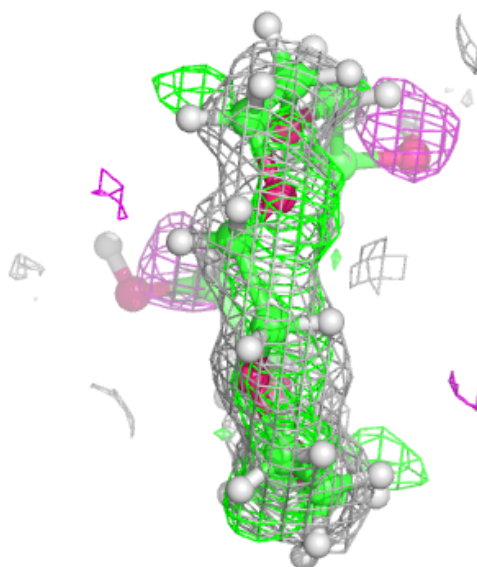
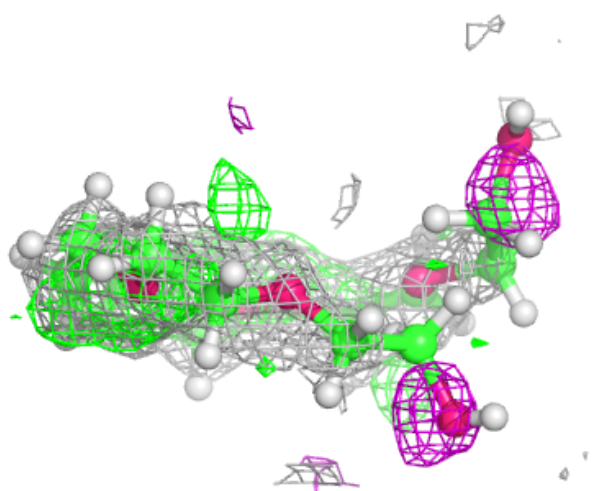
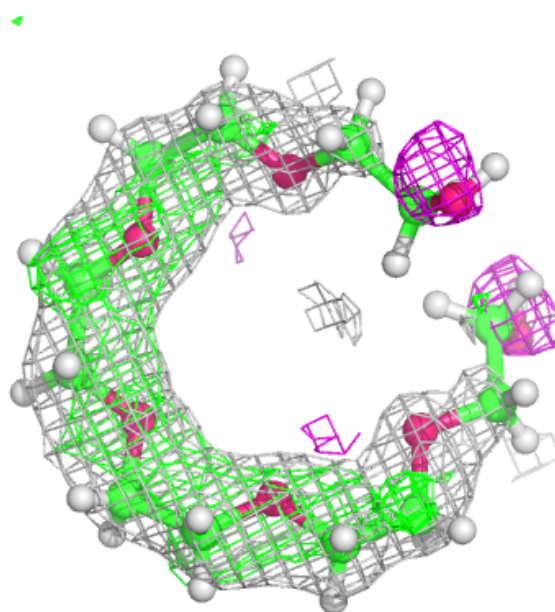
**Electron density around P6G A 405:**

$2mF_o-DF_c$  (at 0.7 rmsd) in gray  
 $mF_o-DF_c$  (at 3 rmsd) in purple (negative)  
and green (positive)



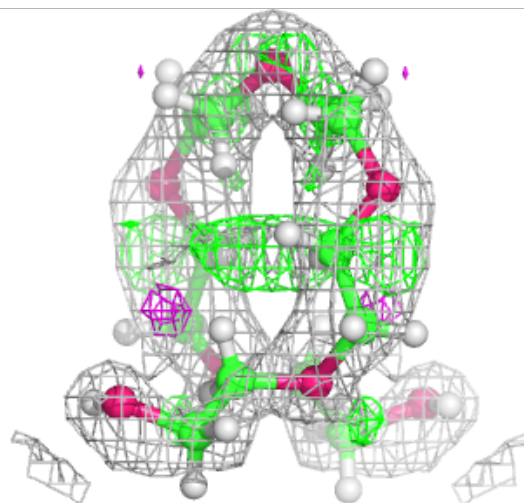
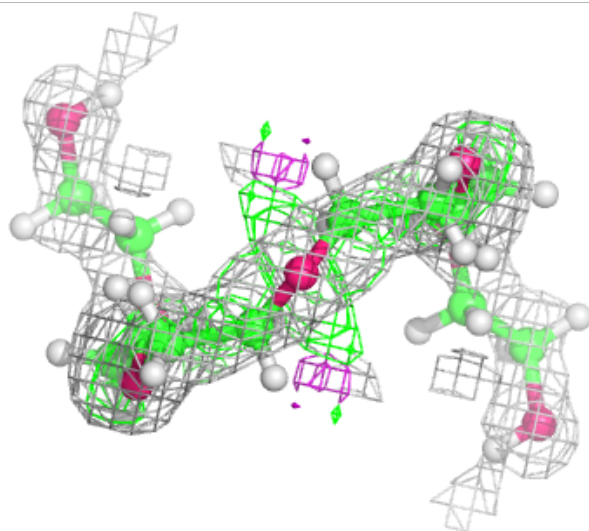
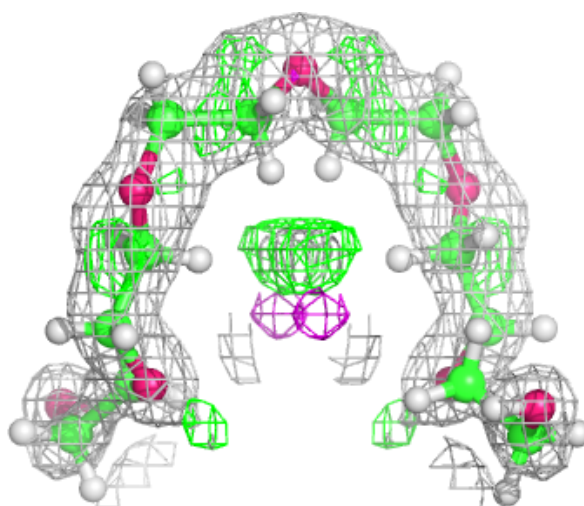
**Electron density around P6G A 404:**

$2mF_o-DF_c$  (at 0.7 rmsd) in gray  
 $mF_o-DF_c$  (at 3 rmsd) in purple (negative)  
and green (positive)



**Electron density around P6G B 404:**

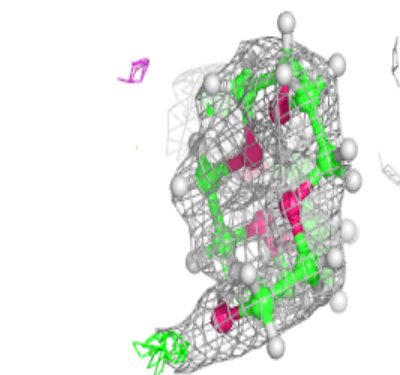
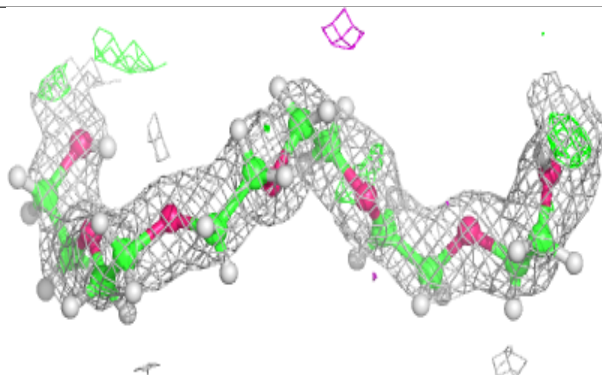
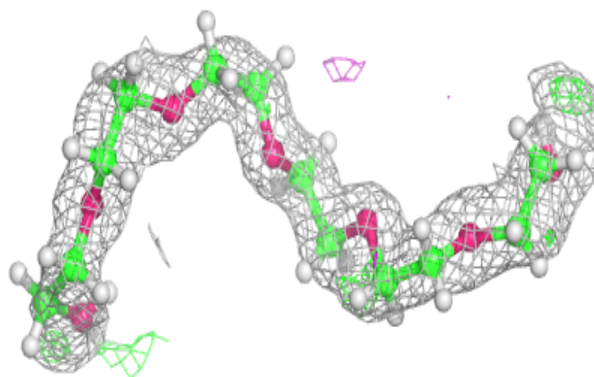
$2mF_o-DF_c$  (at 0.7 rmsd) in gray  
 $mF_o-DF_c$  (at 3 rmsd) in purple (negative)  
and green (positive)



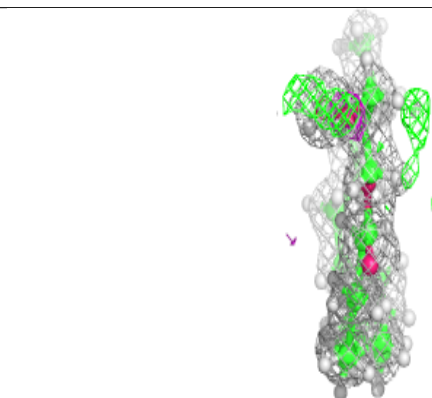
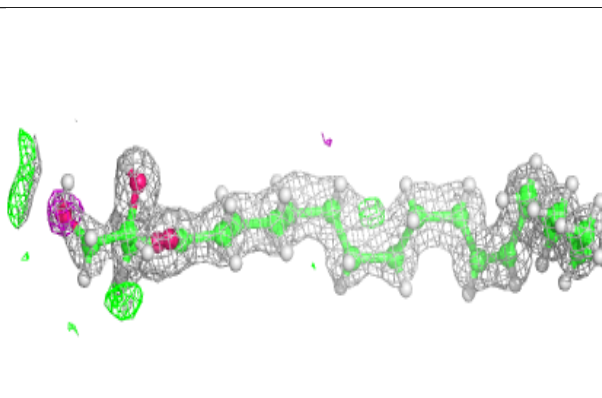
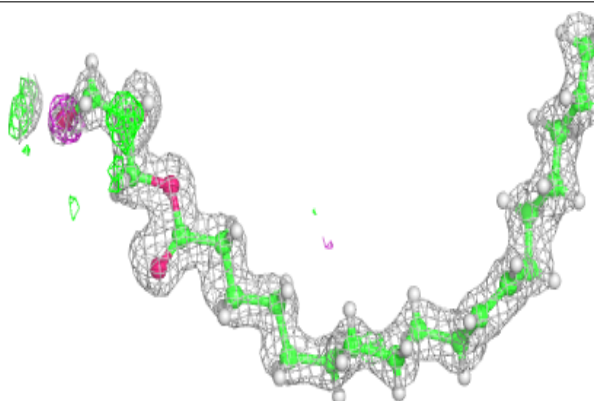


**Electron density around P6G A 403:**

$2mF_o-DF_c$  (at 0.7 rmsd) in gray  
 $mF_o-DF_c$  (at 3 rmsd) in purple (negative)  
and green (positive)

**Electron density around MVC B 402:**

$2mF_o-DF_c$  (at 0.7 rmsd) in gray  
 $mF_o-DF_c$  (at 3 rmsd) in purple (negative)  
and green (positive)



## 6.5 Other polymers [i](#)

There are no such residues in this entry.