



# Full wwPDB X-ray Structure Validation Report ⓘ

May 15, 2020 – 08:54 pm BST

PDB ID : 4WOZ  
Title : Crystal Structures of CdNal from Clostridium difficile in complex with mannosamine  
Authors : Liu, W.D.; Guo, R.T.; Cui, Y.F.; Chen, X.; Wu, Q.Q.; Zhu, D.M.  
Deposited on : 2014-10-17  
Resolution : 1.96 Å(reported)

This is a Full wwPDB X-ray Structure Validation Report for a publicly released PDB entry.

We welcome your comments at [validation@mail.wwpdb.org](mailto:validation@mail.wwpdb.org)

A user guide is available at

<https://www.wwpdb.org/validation/2017/XrayValidationReportHelp>

with specific help available everywhere you see the ⓘ symbol.

---

The following versions of software and data (see [references ⓘ](#)) were used in the production of this report:

MolProbity : 4.02b-467  
Mogul : 1.8.5 (274361), CSD as541be (2020)  
Xtriage (Phenix) : 1.13  
EDS : 2.11  
Percentile statistics : 20191225.v01 (using entries in the PDB archive December 25th 2019)  
Refmac : 5.8.0158  
CCP4 : 7.0.044 (Gargrove)  
Ideal geometry (proteins) : Engh & Huber (2001)  
Ideal geometry (DNA, RNA) : Parkinson et al. (1996)  
Validation Pipeline (wwPDB-VP) : 2.11

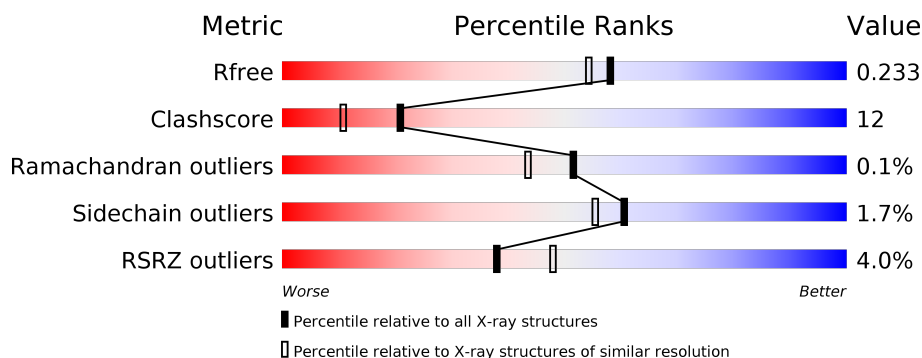
# 1 Overall quality at a glance

The following experimental techniques were used to determine the structure:

*X-RAY DIFFRACTION*

The reported resolution of this entry is 1.96 Å.

Percentile scores (ranging between 0-100) for global validation metrics of the entry are shown in the following graphic. The table shows the number of entries on which the scores are based.



Metric	Whole archive (#Entries)	Similar resolution (#Entries, resolution range(Å))
$R_{free}$	130704	2580 (1.96-1.96)
Clashscore	141614	2705 (1.96-1.96)
Ramachandran outliers	138981	2678 (1.96-1.96)
Sidechain outliers	138945	2678 (1.96-1.96)
RSRZ outliers	127900	2539 (1.96-1.96)

The table below summarises the geometric issues observed across the polymeric chains and their fit to the electron density. The red, orange, yellow and green segments on the lower bar indicate the fraction of residues that contain outliers for  $\geq 3$ , 2, 1 and 0 types of geometric quality criteria respectively. A grey segment represents the fraction of residues that are not modelled. The numeric value for each fraction is indicated below the corresponding segment, with a dot representing fractions  $\leq 5\%$ . The upper red bar (where present) indicates the fraction of residues that have poor fit to the electron density. The numeric value is given above the bar.

Mol	Chain	Length	Quality of chain
1	A	302	<div> <div>5%</div> <div> <div></div> <div>72%</div> <div>24%</div> <div>.</div> </div> </div>
1	B	302	<div> <div>3%</div> <div> <div></div> <div>77%</div> <div>18%</div> <div>..</div> </div> </div>
1	C	302	<div> <div>3%</div> <div> <div></div> <div>77%</div> <div>18%</div> <div>.</div> </div> </div>
1	D	302	<div> <div>5%</div> <div> <div></div> <div>69%</div> <div>25%</div> <div>..</div> </div> </div>
1	E	302	<div> <div>4%</div> <div> <div></div> <div>71%</div> <div>24%</div> <div>..</div> </div> </div>
1	F	302	<div> <div>4%</div> <div> <div></div> <div>75%</div> <div>20%</div> <div>..</div> </div> </div>

*Continued on next page...*

*Continued from previous page...*

Mol	Chain	Length	Quality of chain
1	G	302	
1	H	302	

The following table lists non-polymeric compounds, carbohydrate monomers and non-standard residues in protein, DNA, RNA chains that are outliers for geometric or electron-density-fit criteria:

Mol	Type	Chain	Res	Chirality	Geometry	Clashes	Electron density
2	MN9	B	401	-	-	X	X
2	MN9	F	401	-	-	X	X

## 2 Entry composition

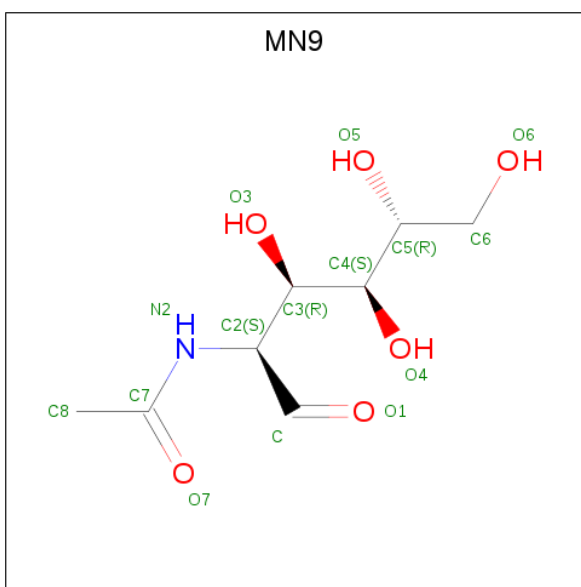
There are 3 unique types of molecules in this entry. The entry contains 20612 atoms, of which 0 are hydrogens and 0 are deuteriums.

In the tables below, the ZeroOcc column contains the number of atoms modelled with zero occupancy, the AltConf column contains the number of residues with at least one atom in alternate conformation and the Trace column contains the number of residues modelled with at most 2 atoms.

- Molecule 1 is a protein called N-acetylneuraminate lyase.

Mol	Chain	Residues	Atoms					ZeroOcc	AltConf	Trace
1	A	290	Total	C	N	O	S	0	0	0
			2321	1489	376	446	10			
1	B	290	Total	C	N	O	S	0	0	0
			2321	1489	376	446	10			
1	C	289	Total	C	N	O	S	0	0	0
			2314	1485	375	444	10			
1	D	290	Total	C	N	O	S	0	0	0
			2321	1489	376	446	10			
1	E	290	Total	C	N	O	S	0	0	0
			2321	1489	376	446	10			
1	F	290	Total	C	N	O	S	0	0	0
			2321	1489	376	446	10			
1	G	290	Total	C	N	O	S	0	0	0
			2321	1489	376	446	10			
1	H	290	Total	C	N	O	S	0	0	0
			2321	1489	376	446	10			

- Molecule 2 is 2-(ACETYLAMINO)-2-DEOXY-D-MANNOSE (three-letter code: MN9) (formula: C<sub>8</sub>H<sub>15</sub>NO<sub>6</sub>).



Mol	Chain	Residues	Atoms				ZeroOcc	AltConf
2	B	1	Total	C	N	O	0	0
			15	8	1	6		
2	F	1	Total	C	N	O	0	0
			15	8	1	6		

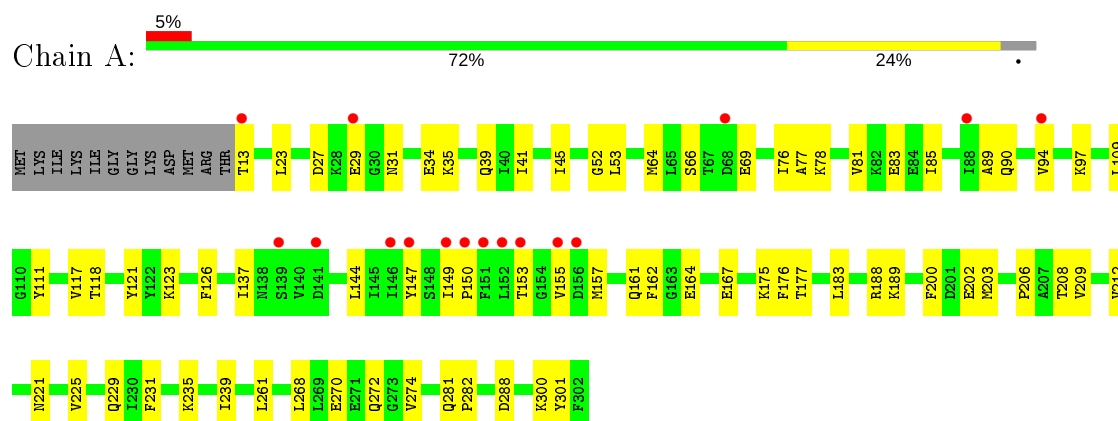
- Molecule 3 is water.

Mol	Chain	Residues	Atoms		ZeroOcc	AltConf
3	A	243	Total	O	0	0
			243	243		
3	B	265	Total	O	0	0
			265	265		
3	C	256	Total	O	0	0
			256	256		
3	D	231	Total	O	0	0
			231	231		
3	E	220	Total	O	0	0
			220	220		
3	F	244	Total	O	0	0
			244	244		
3	G	288	Total	O	0	0
			288	288		
3	H	274	Total	O	0	0
			274	274		

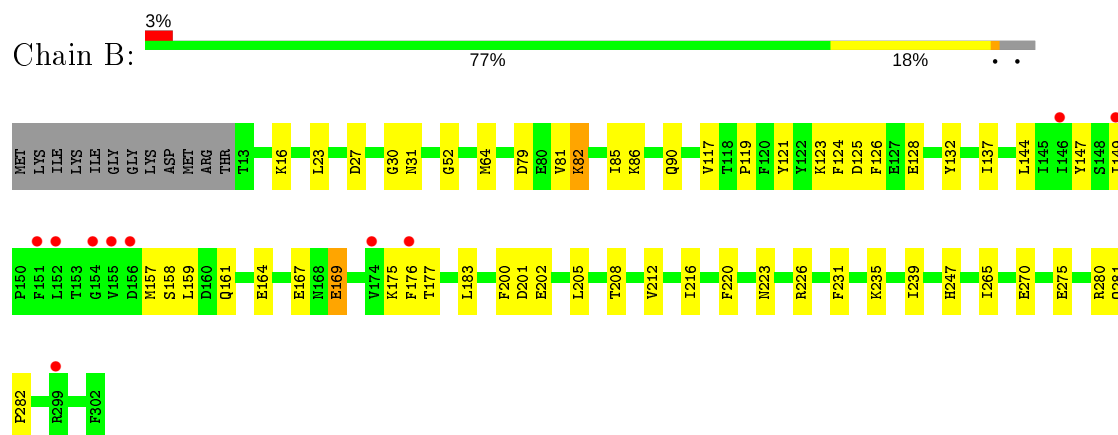
### 3 Residue-property plots [i](#)

These plots are drawn for all protein, RNA and DNA chains in the entry. The first graphic for a chain summarises the proportions of the various outlier classes displayed in the second graphic. The second graphic shows the sequence view annotated by issues in geometry and electron density. Residues are color-coded according to the number of geometric quality criteria for which they contain at least one outlier: green = 0, yellow = 1, orange = 2 and red = 3 or more. A red dot above a residue indicates a poor fit to the electron density ( $RSRZ > 2$ ). Stretches of 2 or more consecutive residues without any outlier are shown as a green connector. Residues present in the sample, but not in the model, are shown in grey.

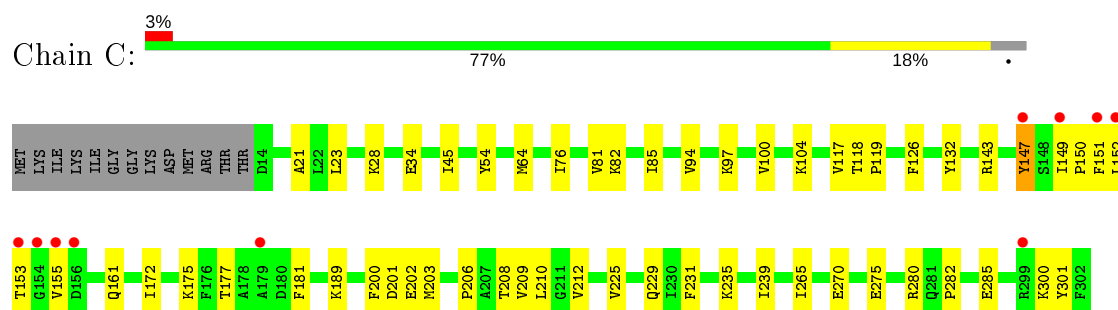
#### • Molecule 1: N-acetylneuraminate lyase



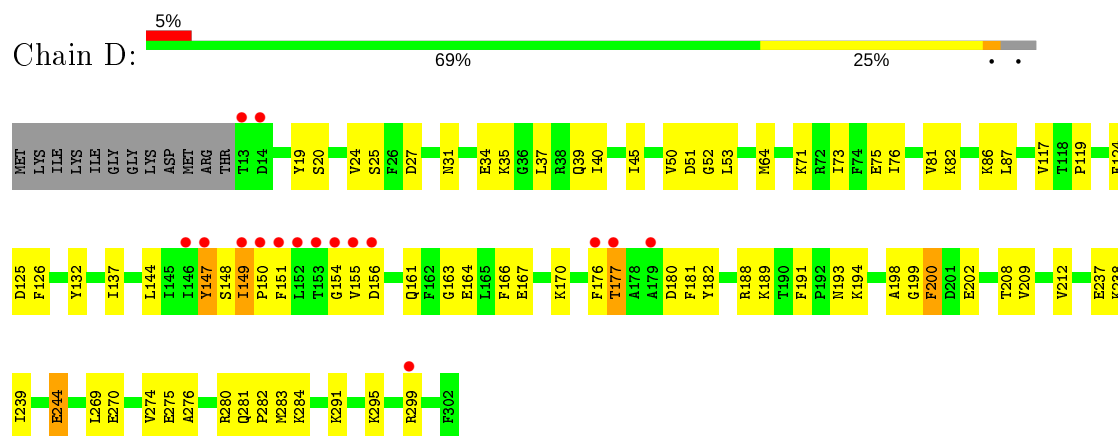
#### • Molecule 1: N-acetylneuraminate lyase



#### • Molecule 1: N-acetylneuraminate lyase



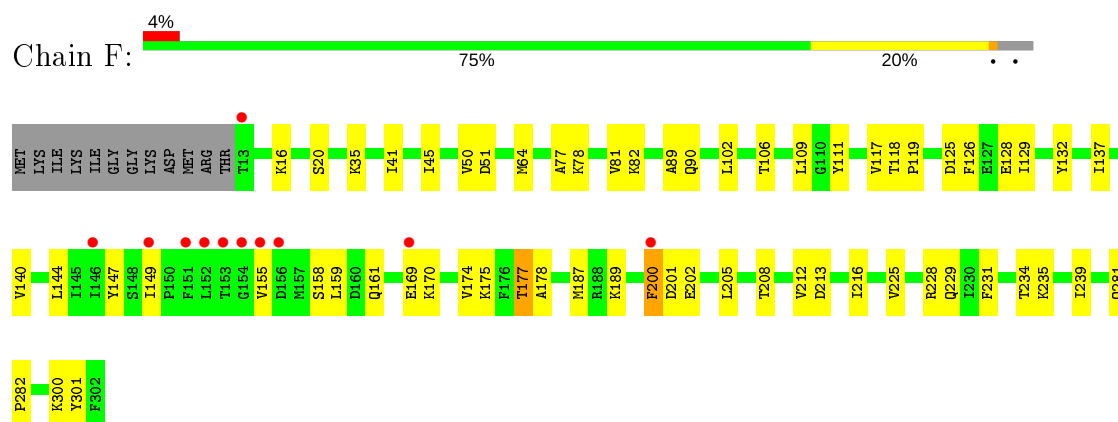
- Molecule 1: N-acetylneuraminate lyase



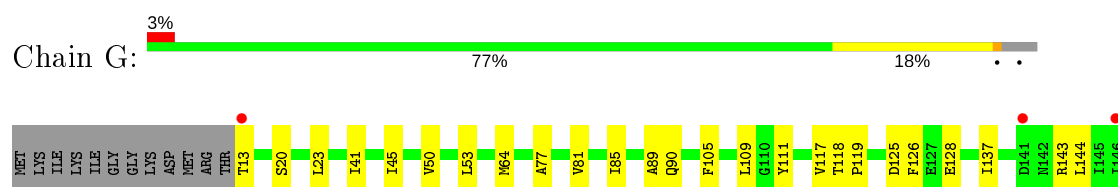
- Molecule 1: N-acetylneuraminate lyase

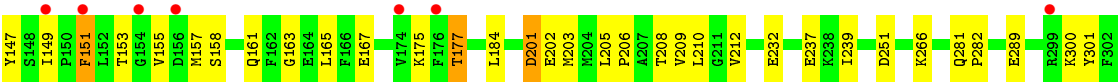


- Molecule 1: N-acetylneuraminate lyase

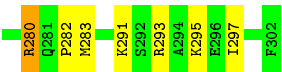


- Molecule 1: N-acetylneuraminate lyase





● Molecule 1: N-acetylneuraminate lyase



## 4 Data and refinement statistics

Property	Value	Source
Space group	P 1 21 1	Depositor
Cell constants a, b, c, $\alpha$ , $\beta$ , $\gamma$	81.48Å 121.60Å 121.06Å 90.00° 96.12° 90.00°	Depositor
Resolution (Å)	25.00 – 1.96 24.95 – 1.95	Depositor EDS
% Data completeness (in resolution range)	94.1 (25.00-1.96) 93.7 (24.95-1.95)	Depositor EDS
$R_{merge}$	0.06	Depositor
$R_{sym}$	(Not available)	Depositor
$\langle I/\sigma(I) \rangle$ <sup>1</sup>	2.48 (at 1.95Å)	Xtriage
Refinement program	CNS	Depositor
R, $R_{free}$	0.188 , 0.237 0.185 , 0.233	Depositor DCC
$R_{free}$ test set	8000 reflections (5.02%)	wwPDB-VP
Wilson B-factor (Å <sup>2</sup> )	27.0	Xtriage
Anisotropy	0.116	Xtriage
Bulk solvent $k_{sol}$ (e/Å <sup>3</sup> ), $B_{sol}$ (Å <sup>2</sup> )	0.36 , 65.0	EDS
L-test for twinning <sup>2</sup>	$\langle  L  \rangle = 0.48$ , $\langle L^2 \rangle = 0.31$	Xtriage
Estimated twinning fraction	No twinning to report.	Xtriage
$F_o, F_c$ correlation	0.96	EDS
Total number of atoms	20612	wwPDB-VP
Average B, all atoms (Å <sup>2</sup> )	36.0	wwPDB-VP

Xtriage's analysis on translational NCS is as follows: *The largest off-origin peak in the Patterson function is 3.19% of the height of the origin peak. No significant pseudotranslation is detected.*

<sup>1</sup>Intensities estimated from amplitudes.

<sup>2</sup>Theoretical values of  $\langle |L| \rangle$ ,  $\langle L^2 \rangle$  for acentric reflections are 0.5, 0.333 respectively for untwinned datasets, and 0.375, 0.2 for perfectly twinned datasets.

## 5 Model quality ⓘ

### 5.1 Standard geometry ⓘ

Bond lengths and bond angles in the following residue types are not validated in this section: MN9

The Z score for a bond length (or angle) is the number of standard deviations the observed value is removed from the expected value. A bond length (or angle) with  $|Z| > 5$  is considered an outlier worth inspection. RMSZ is the root-mean-square of all Z scores of the bond lengths (or angles).

Mol	Chain	Bond lengths		Bond angles	
		RMSZ	$\# Z  > 5$	RMSZ	$\# Z  > 5$
1	A	0.40	3/2359 (0.1%)	0.58	0/3173
1	B	0.34	0/2359	0.60	0/3173
1	C	0.34	0/2352	0.59	0/3163
1	D	0.32	0/2359	0.57	0/3173
1	E	0.33	0/2359	0.59	0/3173
1	F	0.33	0/2359	0.60	0/3173
1	G	0.34	0/2359	0.58	0/3173
1	H	0.33	0/2359	0.59	0/3173
All	All	0.34	3/18865 (0.0%)	0.59	0/25374

All (3) bond length outliers are listed below:

Mol	Chain	Res	Type	Atoms	Z	Observed(Å)	Ideal(Å)
1	A	83	GLU	CD-OE1	-5.68	1.19	1.25
1	A	83	GLU	C-O	-5.56	1.12	1.23
1	A	83	GLU	CD-OE2	-5.19	1.20	1.25

There are no bond angle outliers.

There are no chirality outliers.

There are no planarity outliers.

### 5.2 Too-close contacts ⓘ

In the following table, the Non-H and H(model) columns list the number of non-hydrogen atoms and hydrogen atoms in the chain respectively. The H(added) column lists the number of hydrogen atoms added and optimized by MolProbity. The Clashes column lists the number of clashes within the asymmetric unit, whereas Symm-Clashes lists symmetry related clashes.

Mol	Chain	Non-H	H(model)	H(added)	Clashes	Symm-Clashes
1	A	2321	0	2329	58	0
1	B	2321	0	2329	60	0
1	C	2314	0	2322	54	0
1	D	2321	0	2329	71	0
1	E	2321	0	2329	80	0
1	F	2321	0	2329	55	0
1	G	2321	0	2329	59	0
1	H	2321	0	2329	51	0
2	B	15	0	15	10	0
2	F	15	0	15	13	0
3	A	243	0	0	2	0
3	B	265	0	0	1	0
3	C	256	0	0	0	0
3	D	231	0	0	3	0
3	E	220	0	0	3	0
3	F	244	0	0	3	0
3	G	288	0	0	0	0
3	H	274	0	0	1	0
All	All	20612	0	18655	453	0

The all-atom clashscore is defined as the number of clashes found per 1000 atoms (including hydrogen atoms). The all-atom clashscore for this structure is 12.

All (453) close contacts within the same asymmetric unit are listed below, sorted by their clash magnitude.

Atom-1	Atom-2	Interatomic distance (Å)	Clash overlap (Å)
2:F:401:MN9:C8	2:F:401:MN9:H62C	1.88	1.03
2:F:401:MN9:H82C	2:F:401:MN9:H62C	1.03	1.02
1:F:239:ILE:HD11	1:H:239:ILE:HD11	1.40	1.00
2:F:401:MN9:H82C	2:F:401:MN9:C6	1.94	0.97
1:D:149:ILE:HG23	1:D:177:THR:HG23	1.45	0.96
1:G:118:THR:HG21	1:G:155:VAL:HG11	1.49	0.95
1:F:118:THR:HG21	1:F:155:VAL:HG11	1.50	0.94
1:D:150:PRO:HA	1:D:154:GLY:H	1.35	0.91
1:D:117:VAL:HA	1:D:147:TYR:HB3	1.57	0.85
1:E:239:ILE:H	1:E:239:ILE:HD12	1.40	0.85
2:B:401:MN9:H2	2:B:401:MN9:C6	1.91	0.83
1:E:82:LYS:HA	1:E:82:LYS:HE2	1.60	0.83
1:A:34:GLU:HG3	1:A:76:ILE:HD13	1.59	0.82
1:E:118:THR:HG21	1:E:155:VAL:HG11	1.59	0.82
1:G:239:ILE:HD12	1:G:239:ILE:H	1.42	0.82
1:A:209:VAL:HG23	1:B:239:ILE:HG23	1.62	0.81

*Continued on next page...*

*Continued from previous page...*

Atom-1	Atom-2	Interatomic distance (Å)	Clash overlap (Å)
1:A:209:VAL:HG23	1:B:239:ILE:CG2	2.11	0.80
1:E:117:VAL:HA	1:E:147:TYR:HB3	1.64	0.79
1:B:159:LEU:CB	2:B:401:MN9:H3	2.14	0.78
1:B:159:LEU:HB3	2:B:401:MN9:H3	1.67	0.75
1:A:118:THR:HG21	1:A:155:VAL:HG11	1.66	0.75
2:F:401:MN9:C6	2:F:401:MN9:H	2.17	0.75
1:D:150:PRO:HG3	1:D:155:VAL:O	1.87	0.74
1:D:177:THR:HB	1:D:199:GLY:HA3	1.69	0.74
1:F:117:VAL:HA	1:F:147:TYR:HB3	1.71	0.73
2:B:401:MN9:O6	2:B:401:MN9:N2	2.23	0.72
2:F:401:MN9:C	2:F:401:MN9:H83C	2.19	0.72
1:C:117:VAL:HA	1:C:147:TYR:HB3	1.71	0.72
1:E:149:ILE:HA	1:E:177:THR:CG2	2.20	0.71
2:B:401:MN9:H2	2:B:401:MN9:H62C	1.55	0.71
1:C:149:ILE:HD11	1:C:151:PHE:HB3	1.71	0.71
1:C:149:ILE:HA	1:C:177:THR:OG1	1.90	0.71
1:B:82:LYS:NZ	1:B:82:LYS:HA	2.06	0.71
1:F:231:PHE:O	1:F:235:LYS:HG2	1.93	0.69
1:C:189:LYS:HA	1:C:189:LYS:HE2	1.75	0.68
1:F:35:LYS:HD2	3:F:622:HOH:O	1.92	0.68
1:E:123:LYS:HE2	1:E:123:LYS:HA	1.76	0.68
1:D:164:GLU:O	1:D:167:GLU:HG2	1.93	0.68
2:F:401:MN9:C	2:F:401:MN9:C8	2.71	0.67
1:E:89:ALA:HB3	1:E:106:THR:HG21	1.76	0.67
2:F:401:MN9:H	2:F:401:MN9:H62C	1.75	0.67
1:D:19:TYR:OH	1:D:86:LYS:HD3	1.94	0.66
1:B:79:ASP:O	1:B:82:LYS:HE2	1.96	0.66
1:D:149:ILE:CG2	1:D:177:THR:HG23	2.22	0.66
1:D:51:ASP:O	1:D:86:LYS:HG2	1.94	0.66
1:H:291:LYS:O	1:H:295:LYS:HG3	1.96	0.66
1:E:137:ILE:HG13	1:E:170:LYS:HE3	1.78	0.65
1:A:27:ASP:OD2	1:A:31:ASN:HB2	1.96	0.65
1:E:208:THR:HA	1:E:212:VAL:HG22	1.79	0.65
1:H:34:GLU:HG3	1:H:76:ILE:HD13	1.76	0.65
3:B:588:HOH:O	1:C:64:MET:HE3	1.96	0.65
1:G:239:ILE:HD12	1:G:239:ILE:N	2.12	0.65
1:D:39:GLN:OE1	1:D:275:GLU:HG2	1.97	0.64
1:B:164:GLU:HG3	1:B:167:GLU:OE1	1.97	0.64
1:B:64:MET:CE	1:B:282:PRO:HD2	2.27	0.64
1:D:239:ILE:HD11	1:G:239:ILE:CG1	2.27	0.64
1:B:223:ASN:OD1	1:B:226:ARG:HD2	1.98	0.64

*Continued on next page...*

*Continued from previous page...*

Atom-1	Atom-2	Interatomic distance (Å)	Clash overlap (Å)
1:D:209:VAL:HG11	1:G:209:VAL:HG11	1.78	0.64
1:C:239:ILE:HG12	1:E:239:ILE:HD11	1.80	0.63
1:G:208:THR:HA	1:G:212:VAL:HG22	1.80	0.63
1:D:137:ILE:HD13	1:D:144:LEU:HB2	1.79	0.63
1:E:149:ILE:HA	1:E:177:THR:HG23	1.80	0.63
1:E:27:ASP:OD2	1:E:31:ASN:HB2	1.98	0.63
2:F:401:MN9:C	2:F:401:MN9:O4	2.47	0.62
1:C:64:MET:HE1	1:C:280:ARG:O	1.99	0.62
1:F:137:ILE:HG13	1:F:170:LYS:HE3	1.80	0.62
1:G:126:PHE:HE1	1:G:157:MET:HE3	1.63	0.62
1:E:237:GLU:O	1:E:239:ILE:HD12	2.00	0.62
1:C:300:LYS:HE3	1:C:301:TYR:CZ	2.36	0.61
1:F:102:LEU:O	1:F:106:THR:HG22	2.00	0.61
1:G:205:LEU:HB3	1:G:206:PRO:HD3	1.82	0.61
1:D:198:ALA:HB1	1:D:200:PHE:CE1	2.36	0.61
1:A:239:ILE:HD11	1:B:239:ILE:HD11	1.82	0.60
1:E:176:PHE:HZ	1:E:183:LEU:HG	1.66	0.60
1:E:202:GLU:H	1:E:202:GLU:CD	2.04	0.60
1:A:149:ILE:O	1:A:149:ILE:HG13	2.00	0.60
1:G:149:ILE:HA	1:G:177:THR:HG23	1.82	0.60
1:F:189:LYS:HB2	1:H:247:HIS:CE1	2.36	0.60
1:H:158:SER:OG	1:H:161:GLN:HG3	2.02	0.60
1:F:239:ILE:CG2	1:H:209:VAL:HG23	2.32	0.60
1:A:206:PRO:O	1:A:209:VAL:HG12	2.02	0.59
1:A:34:GLU:HG3	1:A:76:ILE:CD1	2.32	0.59
1:A:64:MET:HG2	1:E:94:VAL:HG12	1.84	0.59
1:B:82:LYS:HZ3	1:B:82:LYS:HA	1.68	0.59
1:D:20:SER:OG	1:D:50:VAL:HG11	2.02	0.59
1:C:34:GLU:HG3	1:C:76:ILE:HD13	1.84	0.59
1:D:27:ASP:OD2	1:D:31:ASN:HB2	2.01	0.59
3:A:451:HOH:O	1:B:239:ILE:HG22	2.01	0.59
1:F:159:LEU:HB2	2:F:401:MN9:O3	2.02	0.59
1:H:27:ASP:OD2	1:H:31:ASN:HB2	2.01	0.59
1:C:119:PRO:HD3	1:C:132:TYR:CE2	2.37	0.59
1:G:137:ILE:HD13	1:G:144:LEU:HB2	1.85	0.59
1:G:64:MET:CE	1:G:282:PRO:HD2	2.32	0.59
1:A:157:MET:HB3	1:A:162:PHE:CE2	2.38	0.59
1:A:239:ILE:CG1	1:B:239:ILE:HD11	2.32	0.59
1:E:72:ARG:HD2	3:E:406:HOH:O	2.03	0.59
1:C:45:ILE:HG12	1:C:85:ILE:HD13	1.85	0.59
1:A:177:THR:HG22	1:A:177:THR:O	2.03	0.58

*Continued on next page...*

*Continued from previous page...*

Atom-1	Atom-2	Interatomic distance (Å)	Clash overlap (Å)
1:A:137:ILE:HD13	1:A:144:LEU:HB2	1.85	0.58
1:F:16:LYS:HE3	1:F:213:ASP:OD1	2.03	0.58
1:C:202:GLU:HG2	1:C:203:MET:HG3	1.85	0.58
1:B:159:LEU:HB2	2:B:401:MN9:H3	1.84	0.58
1:B:121:TYR:O	1:C:152:LEU:HD22	2.04	0.58
1:F:202:GLU:H	1:F:202:GLU:CD	2.07	0.58
1:E:150:PRO:HD2	1:E:178:ALA:HB2	1.85	0.58
1:H:137:ILE:HD13	1:H:144:LEU:HB2	1.86	0.58
1:A:35:LYS:O	1:A:39:GLN:HG3	2.04	0.58
1:A:239:ILE:HD11	1:B:239:ILE:CG1	2.33	0.58
2:B:401:MN9:H	2:B:401:MN9:O4	2.04	0.58
1:F:64:MET:CE	1:F:282:PRO:HD2	2.34	0.58
1:F:158:SER:HB3	3:F:630:HOH:O	2.03	0.57
1:G:118:THR:HG21	1:G:155:VAL:CG1	2.31	0.57
1:G:117:VAL:HA	1:G:147:TYR:HB3	1.87	0.57
1:G:149:ILE:HG23	1:G:149:ILE:O	2.04	0.57
1:F:239:ILE:CD1	1:H:239:ILE:HD11	2.26	0.57
1:E:147:TYR:HE1	1:E:175:LYS:HZ2	1.51	0.57
1:A:94:VAL:HG12	1:E:64:MET:HG2	1.87	0.57
1:E:169:GLU:CD	1:E:169:GLU:H	2.08	0.57
1:A:147:TYR:CD1	1:A:175:LYS:HD3	2.39	0.57
1:A:281:GLN:HB3	1:E:96:LEU:HD23	1.87	0.57
1:F:149:ILE:O	1:F:149:ILE:HG23	2.05	0.56
1:H:235:LYS:HE2	1:H:235:LYS:HA	1.86	0.56
1:C:119:PRO:HD3	1:C:132:TYR:CD2	2.40	0.56
1:D:147:TYR:HD1	1:D:148:SER:N	2.02	0.56
1:C:300:LYS:HE3	1:C:301:TYR:CE2	2.40	0.56
1:E:106:THR:HG23	1:E:111:TYR:CG	2.41	0.56
1:E:150:PRO:HB3	1:E:156:ASP:OD1	2.06	0.56
2:F:401:MN9:H61C	2:F:401:MN9:H	1.88	0.56
1:H:231:PHE:O	1:H:235:LYS:HG2	2.06	0.56
1:B:169:GLU:CD	1:B:169:GLU:H	2.09	0.56
1:E:164:GLU:HA	1:E:167:GLU:OE1	2.06	0.55
1:G:13:THR:HB	1:G:143:ARG:HH22	1.71	0.55
1:F:239:ILE:HG23	1:H:209:VAL:HG23	1.88	0.55
1:E:205:LEU:HB2	1:E:246:GLN:OE1	2.06	0.55
1:E:200:PHE:HB3	3:E:562:HOH:O	2.07	0.55
1:B:30:GLY:HA3	1:C:97:LYS:NZ	2.22	0.55
1:A:300:LYS:HD2	1:A:301:TYR:CZ	2.42	0.55
1:C:126:PHE:CE1	1:C:161:GLN:HB3	2.42	0.54
1:G:184:LEU:HD23	1:G:210:LEU:HD12	1.89	0.54

*Continued on next page...*

*Continued from previous page...*

Atom-1	Atom-2	Interatomic distance (Å)	Clash overlap (Å)
1:B:27:ASP:OD2	1:B:31:ASN:HB2	2.08	0.54
1:D:64:MET:CE	1:D:282:PRO:HD2	2.38	0.54
1:E:200:PHE:HE1	1:E:207:ALA:HB2	1.72	0.54
2:B:401:MN9:C	2:B:401:MN9:O4	2.56	0.54
1:H:147:TYR:CD1	1:H:175:LYS:HD2	2.43	0.54
1:H:64:MET:CE	1:H:282:PRO:HD2	2.38	0.54
1:D:181:PHE:H	1:G:203:MET:HE1	1.73	0.54
1:G:149:ILE:HD11	1:G:151:PHE:HD2	1.73	0.54
1:G:239:ILE:CD1	1:G:239:ILE:H	2.15	0.54
1:H:45:ILE:HG12	1:H:85:ILE:HD13	1.90	0.54
1:C:143:ARG:HD2	1:C:172:ILE:HD13	1.90	0.54
1:F:149:ILE:HB	1:F:177:THR:HG21	1.90	0.54
1:G:149:ILE:CA	1:G:177:THR:HG23	2.37	0.54
1:H:125:ASP:OD1	1:H:128:GLU:HG3	2.07	0.54
1:B:175:LYS:HE2	1:B:216:ILE:HB	1.89	0.54
1:D:150:PRO:HA	1:D:154:GLY:N	2.15	0.54
1:F:208:THR:HA	1:F:212:VAL:HG22	1.88	0.54
1:F:81:VAL:O	1:F:82:LYS:HB2	2.08	0.54
1:A:164:GLU:O	1:A:167:GLU:HG2	2.07	0.54
1:A:239:ILE:HD11	1:B:239:ILE:HG12	1.90	0.53
1:C:189:LYS:HD2	1:E:247:HIS:CE1	2.43	0.53
1:C:147:TYR:HE1	1:C:149:ILE:HB	1.73	0.53
1:E:239:ILE:N	1:E:239:ILE:HD12	2.18	0.53
1:F:126:PHE:CE1	1:F:161:GLN:HB3	2.44	0.53
1:A:239:ILE:HD11	1:B:239:ILE:CD1	2.38	0.53
1:E:174:VAL:HG11	1:E:187:MET:HE3	1.90	0.53
1:F:149:ILE:CA	1:F:177:THR:HG23	2.38	0.53
1:H:206:PRO:O	1:H:209:VAL:HG12	2.09	0.53
1:H:18:ILE:CD1	1:H:228:ARG:HA	2.38	0.53
1:B:208:THR:HA	1:B:212:VAL:HG22	1.92	0.52
1:D:24:VAL:HG21	1:D:73:ILE:HD13	1.90	0.52
1:F:137:ILE:HD13	1:F:144:LEU:HB2	1.90	0.52
1:F:129:ILE:O	1:F:132:TYR:HB3	2.09	0.52
1:E:106:THR:HG23	1:E:111:TYR:HB2	1.90	0.52
1:C:151:PHE:HD1	1:C:152:LEU:HG	1.75	0.52
1:A:208:THR:HA	1:A:212:VAL:HG22	1.91	0.52
1:C:149:ILE:HG23	1:C:153:THR:HG23	1.91	0.52
1:E:174:VAL:HG11	1:E:187:MET:CE	2.39	0.52
1:G:64:MET:HE2	1:G:281:GLN:O	2.10	0.52
1:E:239:ILE:H	1:E:239:ILE:CD1	2.17	0.52
1:G:149:ILE:H	1:G:177:THR:HG23	1.75	0.52

*Continued on next page...*

*Continued from previous page...*

Atom-1	Atom-2	Interatomic distance (Å)	Clash overlap (Å)
1:A:52:GLY:HA2	1:A:85:ILE:HD12	1.92	0.52
1:E:52:GLY:HA2	1:E:85:ILE:HD12	1.91	0.52
1:F:300:LYS:HD2	1:F:301:TYR:CE2	2.45	0.52
1:G:45:ILE:HG12	1:G:85:ILE:HD13	1.91	0.52
1:F:205:LEU:HD11	1:H:209:VAL:HG21	1.92	0.52
1:G:53:LEU:HG	1:G:85:ILE:HD11	1.92	0.51
1:B:119:PRO:HD3	1:B:132:TYR:CD2	2.45	0.51
1:D:163:GLY:HA2	1:D:191:PHE:CZ	2.46	0.51
1:E:119:PRO:HB2	1:E:124:PHE:CE2	2.46	0.51
1:D:281:GLN:HG3	3:F:569:HOH:O	2.10	0.51
1:A:282:PRO:HD3	1:E:96:LEU:HB2	1.93	0.51
1:E:147:TYR:CZ	1:E:149:ILE:HD11	2.46	0.51
1:E:246:GLN:NE2	1:E:250:ASN:OD1	2.43	0.51
1:E:34:GLU:HG3	1:E:76:ILE:HD13	1.93	0.51
1:H:280:ARG:O	1:H:283:MET:HB2	2.12	0.51
1:A:268:LEU:O	1:A:272:GLN:HG3	2.11	0.50
1:H:208:THR:HA	1:H:212:VAL:HG22	1.93	0.50
1:C:209:VAL:HG23	1:E:239:ILE:HG21	1.93	0.50
1:C:231:PHE:O	1:C:235:LYS:HG2	2.12	0.50
1:D:239:ILE:HD11	1:G:239:ILE:HG13	1.92	0.50
1:E:45:ILE:HD11	1:E:81:VAL:HG22	1.91	0.50
1:A:202:GLU:HG2	1:A:203:MET:HG3	1.93	0.50
1:F:51:ASP:CG	1:F:228:ARG:HH22	2.15	0.50
1:E:149:ILE:H	1:E:177:THR:HG22	1.76	0.50
1:D:126:PHE:CE1	1:D:161:GLN:HB3	2.47	0.50
1:D:177:THR:HB	1:D:199:GLY:CA	2.41	0.50
1:F:78:LYS:HE2	1:F:109:LEU:O	2.11	0.50
1:B:16:LYS:O	1:B:86:LYS:NZ	2.43	0.50
1:E:147:TYR:CE2	1:E:149:ILE:HD11	2.46	0.50
1:F:175:LYS:HE2	1:F:216:ILE:HB	1.94	0.50
1:B:137:ILE:HD13	1:B:144:LEU:HB2	1.92	0.49
1:A:239:ILE:CD1	1:B:239:ILE:HD11	2.43	0.49
1:D:237:GLU:HG2	1:G:239:ILE:HD13	1.93	0.49
1:D:34:GLU:HG3	1:D:76:ILE:HD13	1.92	0.49
1:G:20:SER:OG	1:G:50:VAL:HG11	2.12	0.49
1:B:158:SER:OG	1:B:161:GLN:HG3	2.12	0.49
1:D:208:THR:HA	1:D:212:VAL:HG22	1.93	0.49
1:E:35:LYS:O	1:E:39:GLN:HG3	2.12	0.49
1:H:89:ALA:HB2	1:H:111:TYR:CD2	2.47	0.49
1:B:82:LYS:HZ2	1:B:82:LYS:HA	1.77	0.49
1:A:225:VAL:O	1:A:229:GLN:HG3	2.13	0.49

*Continued on next page...*

*Continued from previous page...*

Atom-1	Atom-2	Interatomic distance (Å)	Clash overlap (Å)
1:E:126:PHE:CE1	1:E:161:GLN:HB2	2.47	0.49
1:E:149:ILE:N	1:E:150:PRO:HD3	2.26	0.49
1:H:149:ILE:O	1:H:149:ILE:HG23	2.12	0.49
1:H:149:ILE:N	1:H:150:PRO:HD3	2.28	0.49
1:G:158:SER:OG	1:G:161:GLN:HG3	2.12	0.49
1:C:100:VAL:CG1	1:C:104:LYS:HE2	2.43	0.49
1:G:147:TYR:CD1	1:G:175:LYS:HD3	2.48	0.49
1:B:23:LEU:HD11	1:B:265:ILE:CG2	2.42	0.49
1:D:64:MET:HE2	1:D:281:GLN:O	2.12	0.49
1:F:149:ILE:HA	1:F:177:THR:HG23	1.95	0.49
1:H:23:LEU:HD11	1:H:265:ILE:CG2	2.43	0.49
1:H:39:GLN:NE2	1:H:275:GLU:H	2.10	0.49
1:A:53:LEU:HG	1:A:85:ILE:HD11	1.96	0.48
1:B:81:VAL:O	1:B:82:LYS:HB2	2.13	0.48
1:D:125:ASP:HB2	3:D:606:HOH:O	2.13	0.48
1:C:150:PRO:HG3	1:C:155:VAL:O	2.13	0.48
1:C:239:ILE:CG1	1:E:239:ILE:HD11	2.42	0.48
1:G:300:LYS:HE3	1:G:301:TYR:CE2	2.48	0.48
1:A:45:ILE:HD11	1:A:81:VAL:HG22	1.94	0.48
1:B:119:PRO:HD3	1:B:132:TYR:CE2	2.49	0.48
1:B:30:GLY:HA3	1:C:97:LYS:HZ1	1.79	0.48
1:D:35:LYS:O	1:D:39:GLN:HG3	2.14	0.48
1:B:177:THR:O	1:B:177:THR:HG22	2.14	0.48
1:G:289:GLU:H	1:G:289:GLU:CD	2.18	0.48
1:D:291:LYS:O	1:D:295:LYS:HG3	2.13	0.48
1:E:29:GLU:H	1:E:29:GLU:CD	2.17	0.48
1:F:239:ILE:HD11	1:H:239:ILE:CD1	2.29	0.48
1:B:149:ILE:O	1:B:149:ILE:HG23	2.14	0.48
1:F:20:SER:OG	1:F:50:VAL:HG11	2.13	0.48
1:D:150:PRO:HG2	1:D:156:ASP:OD1	2.14	0.47
1:E:161:GLN:HB3	1:E:161:GLN:HE21	1.52	0.47
1:A:149:ILE:N	1:A:150:PRO:HD3	2.29	0.47
1:A:123:LYS:HE2	1:E:152:LEU:HD23	1.95	0.47
2:F:401:MN9:H83C	2:F:401:MN9:H	1.96	0.47
1:B:270:GLU:OE2	1:B:275:GLU:HA	2.14	0.47
1:G:163:GLY:O	1:G:167:GLU:HG3	2.15	0.47
1:F:117:VAL:CA	1:F:147:TYR:HB3	2.43	0.47
1:D:124:PHE:CE1	1:F:282:PRO:HG2	2.49	0.47
1:B:202:GLU:CD	1:B:202:GLU:H	2.18	0.47
1:G:45:ILE:HD11	1:G:81:VAL:HG22	1.95	0.47
1:E:287:THR:O	1:E:291:LYS:HG3	2.15	0.47

*Continued on next page...*

*Continued from previous page...*

Atom-1	Atom-2	Interatomic distance (Å)	Clash overlap (Å)
1:E:53:LEU:HG	1:E:85:ILE:HD11	1.95	0.47
1:C:270:GLU:OE1	1:C:275:GLU:HA	2.14	0.47
1:D:52:GLY:HA3	1:D:86:LYS:HG3	1.97	0.47
1:B:149:ILE:O	1:B:149:ILE:HG13	2.15	0.47
1:B:231:PHE:O	1:B:235:LYS:HG2	2.15	0.46
1:D:150:PRO:HG3	1:D:155:VAL:C	2.35	0.46
1:A:209:VAL:HG23	1:B:239:ILE:HG21	1.96	0.46
1:B:126:PHE:HE1	1:B:157:MET:HE1	1.78	0.46
1:B:117:VAL:HA	1:B:147:TYR:HB3	1.97	0.46
1:E:78:LYS:HE2	1:E:109:LEU:O	2.15	0.46
1:E:89:ALA:HB2	1:E:111:TYR:CD2	2.50	0.46
1:F:300:LYS:HD2	1:F:301:TYR:CZ	2.50	0.46
1:G:125:ASP:OD1	1:G:128:GLU:HG3	2.15	0.46
1:F:149:ILE:H	1:F:177:THR:HG23	1.79	0.46
1:H:225:VAL:O	1:H:229:GLN:HG3	2.16	0.46
1:A:89:ALA:HB2	1:A:111:TYR:CD2	2.51	0.46
1:G:149:ILE:HG23	1:G:153:THR:HG23	1.96	0.46
1:D:177:THR:HA	1:D:200:PHE:CD2	2.50	0.46
1:F:118:THR:HG23	1:F:119:PRO:HD2	1.97	0.46
1:F:239:ILE:HG21	1:H:209:VAL:HG23	1.98	0.46
1:G:206:PRO:O	1:G:209:VAL:HG22	2.16	0.46
1:A:13:THR:N	3:A:513:HOH:O	2.49	0.46
1:D:176:PHE:HZ	1:D:180:ASP:HB3	1.80	0.46
1:F:45:ILE:HD11	1:F:81:VAL:HG22	1.97	0.46
1:C:149:ILE:CD1	1:C:151:PHE:HB3	2.42	0.46
1:D:164:GLU:O	1:D:167:GLU:CG	2.62	0.46
1:C:100:VAL:HG12	1:C:104:LYS:HE2	1.98	0.45
1:F:169:GLU:N	1:F:169:GLU:OE1	2.47	0.45
1:F:41:ILE:HD13	1:F:77:ALA:HA	1.97	0.45
1:F:239:ILE:HG23	1:H:209:VAL:CG2	2.46	0.45
1:C:151:PHE:CD1	1:C:152:LEU:HG	2.50	0.45
1:F:16:LYS:HG2	1:F:213:ASP:HB3	1.98	0.45
1:B:126:PHE:CE1	1:B:157:MET:HE1	2.51	0.45
1:E:106:THR:HG23	1:E:111:TYR:CB	2.47	0.45
1:H:270:GLU:HA	1:H:274:VAL:O	2.16	0.45
1:B:126:PHE:CE1	1:B:161:GLN:HB3	2.51	0.45
1:C:64:MET:HE2	1:C:280:ARG:HB2	1.98	0.45
1:D:188:ARG:HA	1:D:188:ARG:NE	2.31	0.45
1:E:64:MET:CE	1:E:282:PRO:HD2	2.47	0.45
1:E:147:TYR:CD1	1:E:175:LYS:HD3	2.51	0.45
1:A:45:ILE:HG12	1:A:85:ILE:HD13	1.98	0.45

*Continued on next page...*

*Continued from previous page...*

Atom-1	Atom-2	Interatomic distance (Å)	Clash overlap (Å)
1:B:23:LEU:HD11	1:B:265:ILE:HG21	1.98	0.45
1:D:177:THR:HA	1:D:200:PHE:CE2	2.51	0.45
1:E:117:VAL:HG21	1:E:149:ILE:HD12	1.99	0.45
1:G:149:ILE:N	1:G:177:THR:HG23	2.32	0.45
1:G:157:MET:HA	1:G:161:GLN:OE1	2.16	0.45
1:B:124:PHE:CE1	1:C:282:PRO:HG2	2.52	0.45
1:C:118:THR:HG21	1:C:155:VAL:HG11	1.99	0.45
1:G:157:MET:HE3	1:G:165:LEU:HD11	1.98	0.45
1:H:45:ILE:HD11	1:H:81:VAL:HG22	1.99	0.45
2:F:401:MN9:C8	2:F:401:MN9:H	2.45	0.45
1:G:202:GLU:H	1:G:202:GLU:CD	2.20	0.45
1:A:209:VAL:CG2	1:B:239:ILE:HG23	2.41	0.44
1:D:166:PHE:HB3	1:D:194:LYS:HE3	1.98	0.44
1:F:208:THR:HB	1:F:234:THR:HG21	1.99	0.44
1:E:176:PHE:CZ	1:E:183:LEU:HG	2.50	0.44
1:G:149:ILE:H	1:G:177:THR:CG2	2.29	0.44
1:G:23:LEU:HD21	1:G:266:LYS:HG3	1.99	0.44
1:H:149:ILE:HG23	1:H:153:THR:HG23	1.99	0.44
1:F:125:ASP:OD1	1:F:128:GLU:HG3	2.17	0.44
1:D:71:LYS:O	1:D:75:GLU:HG3	2.17	0.44
1:C:208:THR:HA	1:C:212:VAL:HG22	2.00	0.44
1:D:193:ASN:HB2	3:D:459:HOH:O	2.16	0.44
1:D:244:GLU:HA	1:D:244:GLU:OE1	2.18	0.44
1:D:280:ARG:O	1:D:283:MET:HB2	2.17	0.44
1:E:81:VAL:O	1:E:82:LYS:HB2	2.17	0.44
1:F:149:ILE:N	1:F:177:THR:HG23	2.33	0.44
1:H:188:ARG:NE	1:H:188:ARG:HA	2.33	0.44
1:E:228:ARG:O	1:E:232:GLU:HG3	2.16	0.44
1:H:119:PRO:HD3	1:H:132:TYR:CE2	2.53	0.44
1:D:202:GLU:H	1:D:202:GLU:CD	2.20	0.44
1:A:126:PHE:CE1	1:A:161:GLN:HB3	2.53	0.44
1:D:53:LEU:HB2	1:D:87:LEU:HD23	2.00	0.44
1:B:64:MET:HG2	1:C:94:VAL:HG12	2.00	0.43
1:B:52:GLY:HA2	1:B:85:ILE:HD12	2.00	0.43
1:C:64:MET:CE	1:C:280:ARG:HB2	2.48	0.43
1:F:140:VAL:O	1:F:170:LYS:NZ	2.50	0.43
1:D:239:ILE:HD13	1:G:209:VAL:HG12	2.00	0.43
1:G:89:ALA:HB2	1:G:111:TYR:CD2	2.53	0.43
1:H:164:GLU:O	1:H:167:GLU:HG2	2.18	0.43
1:H:117:VAL:HA	1:H:147:TYR:HB3	2.00	0.43
1:F:64:MET:HE2	1:F:281:GLN:O	2.17	0.43

*Continued on next page...*

*Continued from previous page...*

Atom-1	Atom-2	Interatomic distance (Å)	Clash overlap (Å)
1:G:126:PHE:CE1	1:G:157:MET:HE3	2.50	0.43
1:H:293:ARG:O	1:H:297:ILE:HG13	2.18	0.43
1:H:75:GLU:HG2	3:H:427:HOH:O	2.17	0.43
1:C:100:VAL:O	1:C:104:LYS:HG3	2.18	0.43
1:B:280:ARG:CZ	1:C:97:LYS:HD2	2.49	0.43
1:G:118:THR:HG23	1:G:119:PRO:HD2	2.01	0.43
1:A:209:VAL:HG22	1:B:205:LEU:HD21	2.00	0.43
1:A:97:LYS:HB3	1:A:97:LYS:NZ	2.33	0.43
1:D:189:LYS:NZ	3:D:602:HOH:O	2.51	0.43
1:A:188:ARG:HA	1:A:188:ARG:NE	2.33	0.43
1:B:158:SER:HB2	2:B:401:MN9:H83C	2.01	0.43
1:B:220:PHE:N	1:B:220:PHE:CD1	2.87	0.43
1:D:147:TYR:HD1	1:D:148:SER:H	1.67	0.43
1:D:40:ILE:HD11	1:D:276:ALA:HA	2.01	0.43
1:D:238:LYS:N	1:D:238:LYS:HD2	2.34	0.43
1:E:188:ARG:HA	1:E:188:ARG:NE	2.34	0.43
1:F:174:VAL:HG11	1:F:187:MET:CE	2.49	0.43
1:A:117:VAL:HA	1:A:147:TYR:HB3	2.01	0.43
1:A:66:SER:OG	1:A:69:GLU:HG3	2.19	0.43
1:C:23:LEU:HD11	1:C:265:ILE:HG21	2.01	0.43
1:D:137:ILE:HG13	1:D:170:LYS:HE3	2.00	0.43
1:B:176:PHE:CE1	1:B:183:LEU:HD23	2.54	0.42
1:C:206:PRO:O	1:C:209:VAL:HG12	2.19	0.42
1:C:28:LYS:NZ	1:C:285:GLU:OE1	2.52	0.42
1:D:45:ILE:HD11	1:D:81:VAL:HG22	2.01	0.42
1:E:205:LEU:HD23	1:E:205:LEU:C	2.39	0.42
1:H:34:GLU:HG3	1:H:76:ILE:CD1	2.46	0.42
1:A:23:LEU:CD1	1:A:221:ASN:ND2	2.82	0.42
1:B:125:ASP:OD1	1:B:128:GLU:HG3	2.18	0.42
1:D:270:GLU:HA	1:D:274:VAL:O	2.19	0.42
1:G:237:GLU:C	1:G:239:ILE:HD12	2.39	0.42
1:A:41:ILE:HD13	1:A:77:ALA:HA	2.02	0.42
1:D:119:PRO:HD3	1:D:132:TYR:CD2	2.54	0.42
1:E:225:VAL:O	1:E:229:GLN:HG3	2.19	0.42
1:C:21:ALA:HA	1:C:54:TYR:HB3	2.01	0.42
1:D:37:LEU:HD23	1:D:76:ILE:HG21	2.02	0.42
1:B:281:GLN:OE1	1:B:282:PRO:HA	2.20	0.42
1:D:126:PHE:CD1	1:D:161:GLN:HB3	2.55	0.42
1:D:295:LYS:O	1:D:299:ARG:HG3	2.20	0.42
1:F:89:ALA:HB2	1:F:111:TYR:CD2	2.55	0.42
1:D:25:SER:HA	1:D:276:ALA:O	2.18	0.42

*Continued on next page...*

*Continued from previous page...*

Atom-1	Atom-2	Interatomic distance (Å)	Clash overlap (Å)
1:E:236:ASN:O	1:E:237:GLU:HB2	2.19	0.42
1:H:21:ALA:HA	1:H:54:TYR:HB3	2.00	0.42
1:A:27:ASP:OD1	1:A:29:GLU:N	2.53	0.42
1:A:121:TYR:OH	1:E:149:ILE:HD13	2.20	0.42
1:E:161:GLN:HG2	1:E:161:GLN:H	1.71	0.42
1:F:147:TYR:CD1	1:F:175:LYS:HD3	2.55	0.42
1:G:23:LEU:HD21	1:G:266:LYS:CG	2.49	0.42
1:H:129:ILE:O	1:H:132:TYR:HB3	2.20	0.42
1:A:117:VAL:HG22	1:A:118:THR:N	2.35	0.42
1:E:23:LEU:HD11	1:E:265:ILE:CG2	2.50	0.42
1:F:225:VAL:O	1:F:229:GLN:HG3	2.19	0.42
1:G:126:PHE:CE1	1:G:161:GLN:HB3	2.54	0.42
1:G:41:ILE:HD13	1:G:77:ALA:HA	2.02	0.42
1:H:23:LEU:HD11	1:H:265:ILE:HG21	2.02	0.42
1:E:117:VAL:CA	1:E:147:TYR:HB3	2.42	0.42
1:G:157:MET:HE2	1:G:161:GLN:HB3	2.01	0.42
1:H:81:VAL:O	1:H:82:LYS:HB2	2.19	0.42
1:C:225:VAL:O	1:C:229:GLN:HG3	2.20	0.41
1:C:81:VAL:O	1:C:82:LYS:HB2	2.19	0.41
1:D:119:PRO:HD3	1:D:132:TYR:CE2	2.55	0.41
1:E:27:ASP:OD1	1:E:29:GLU:HG2	2.20	0.41
1:H:149:ILE:HD13	1:H:177:THR:HG21	2.01	0.41
1:A:149:ILE:HG23	1:A:153:THR:HG23	2.01	0.41
1:A:231:PHE:O	1:A:235:LYS:HG2	2.20	0.41
1:B:123:LYS:HE2	1:C:152:LEU:HD23	2.01	0.41
1:B:159:LEU:HB3	2:B:401:MN9:C3	2.43	0.41
1:D:269:LEU:HB3	1:D:274:VAL:HB	2.01	0.41
2:F:401:MN9:C	2:F:401:MN9:H62C	2.45	0.41
1:E:137:ILE:HD13	1:E:144:LEU:HB2	2.03	0.41
1:F:158:SER:OG	1:F:161:GLN:HG3	2.20	0.41
1:H:164:GLU:O	1:H:167:GLU:CG	2.69	0.41
1:E:205:LEU:HB3	1:E:206:PRO:CD	2.50	0.41
1:C:209:VAL:HG23	1:E:239:ILE:CG2	2.49	0.41
1:E:269:LEU:HB3	1:E:274:VAL:HB	2.02	0.41
1:A:78:LYS:HE2	1:A:109:LEU:O	2.21	0.41
1:E:293:ARG:HD3	3:E:590:HOH:O	2.20	0.41
1:C:149:ILE:HA	1:C:177:THR:HG1	1.84	0.41
1:C:149:ILE:HG13	1:C:149:ILE:O	2.19	0.41
1:C:201:ASP:OD1	1:C:201:ASP:N	2.54	0.41
1:C:45:ILE:HD11	1:C:81:VAL:HG22	2.03	0.41
1:E:220:PHE:CD1	1:E:220:PHE:N	2.87	0.41

*Continued on next page...*

*Continued from previous page...*

Atom-1	Atom-2	Interatomic distance (Å)	Clash overlap (Å)
1:F:178:ALA:O	1:F:200:PHE:CE2	2.74	0.41
1:A:270:GLU:HA	1:A:274:VAL:O	2.20	0.41
1:C:181:PHE:HD2	1:C:210:LEU:HD12	1.86	0.41
1:E:23:LEU:HD11	1:E:265:ILE:HG21	2.02	0.41
1:G:203:MET:C	1:G:206:PRO:HD2	2.41	0.41
1:D:237:GLU:CG	1:G:239:ILE:HD13	2.51	0.41
1:D:189:LYS:HE3	1:G:251:ASP:OD2	2.21	0.41
1:A:144:LEU:C	1:A:144:LEU:HD23	2.42	0.41
1:D:239:ILE:HD11	1:G:239:ILE:HG12	2.03	0.41
1:D:284:LYS:HB2	1:F:128:GLU:OE2	2.20	0.41
1:H:201:ASP:OD1	1:H:201:ASP:N	2.54	0.41
1:H:18:ILE:HD11	1:H:228:ARG:HA	2.03	0.41
1:A:176:PHE:CZ	1:A:183:LEU:HD23	2.56	0.40
1:D:270:GLU:OE2	1:D:275:GLU:HA	2.21	0.40
1:E:117:VAL:CG2	1:E:149:ILE:HD12	2.51	0.40
1:H:149:ILE:O	1:H:149:ILE:HG13	2.19	0.40
1:G:105:PHE:CE2	1:G:109:LEU:HD11	2.55	0.40
1:D:182:TYR:N	1:G:203:MET:HE2	2.36	0.40
1:H:176:PHE:CE1	1:H:178:ALA:HB3	2.56	0.40
1:B:164:GLU:O	1:B:167:GLU:HG3	2.21	0.40
1:C:175:LYS:NZ	1:C:177:THR:CG2	2.84	0.40
1:A:189:LYS:HB2	1:B:247:HIS:CE1	2.56	0.40
1:A:281:GLN:CB	1:E:96:LEU:HD23	2.51	0.40
1:G:201:ASP:N	1:G:201:ASP:OD1	2.55	0.40
1:H:188:ARG:HG2	1:H:210:LEU:O	2.22	0.40
1:D:148:SER:C	1:D:149:ILE:HG13	2.42	0.40
1:G:144:LEU:C	1:G:144:LEU:HD23	2.42	0.40

There are no symmetry-related clashes.

## 5.3 Torsion angles ⓘ

### 5.3.1 Protein backbone ⓘ

In the following table, the Percentiles column shows the percent Ramachandran outliers of the chain as a percentile score with respect to all X-ray entries followed by that with respect to entries of similar resolution.

The Analysed column shows the number of residues for which the backbone conformation was analysed, and the total number of residues.

Mol	Chain	Analysed	Favoured	Allowed	Outliers	Percentiles	
1	A	288/302 (95%)	280 (97%)	7 (2%)	1 (0%)	41	30
1	B	288/302 (95%)	280 (97%)	8 (3%)	0	100	100
1	C	287/302 (95%)	280 (98%)	7 (2%)	0	100	100
1	D	288/302 (95%)	282 (98%)	5 (2%)	1 (0%)	41	30
1	E	288/302 (95%)	276 (96%)	12 (4%)	0	100	100
1	F	288/302 (95%)	278 (96%)	10 (4%)	0	100	100
1	G	288/302 (95%)	278 (96%)	10 (4%)	0	100	100
1	H	288/302 (95%)	279 (97%)	9 (3%)	0	100	100
All	All	2303/2416 (95%)	2233 (97%)	68 (3%)	2 (0%)	51	43

All (2) Ramachandran outliers are listed below:

Mol	Chain	Res	Type
1	A	261	LEU
1	D	82	LYS

### 5.3.2 Protein sidechains ⓘ

In the following table, the Percentiles column shows the percent sidechain outliers of the chain as a percentile score with respect to all X-ray entries followed by that with respect to entries of similar resolution.

The Analysed column shows the number of residues for which the sidechain conformation was analysed, and the total number of residues.

Mol	Chain	Analysed	Rotameric	Outliers	Percentiles	
1	A	252/262 (96%)	249 (99%)	3 (1%)	71	68
1	B	252/262 (96%)	247 (98%)	5 (2%)	55	48
1	C	251/262 (96%)	249 (99%)	2 (1%)	81	80
1	D	252/262 (96%)	246 (98%)	6 (2%)	49	40
1	E	252/262 (96%)	245 (97%)	7 (3%)	43	33
1	F	252/262 (96%)	248 (98%)	4 (2%)	62	58
1	G	252/262 (96%)	247 (98%)	5 (2%)	55	48
1	H	252/262 (96%)	249 (99%)	3 (1%)	71	68
All	All	2015/2096 (96%)	1980 (98%)	35 (2%)	60	55

All (35) residues with a non-rotameric sidechain are listed below:

Mol	Chain	Res	Type
1	A	90	GLN
1	A	200	PHE
1	A	288	ASP
1	B	82	LYS
1	B	90	GLN
1	B	169	GLU
1	B	200	PHE
1	B	201	ASP
1	C	147	TYR
1	C	200	PHE
1	D	147	TYR
1	D	149	ILE
1	D	151	PHE
1	D	177	THR
1	D	200	PHE
1	D	244	GLU
1	E	90	GLN
1	E	161	GLN
1	E	169	GLU
1	E	176	PHE
1	E	200	PHE
1	E	202	GLU
1	E	280	ARG
1	F	90	GLN
1	F	177	THR
1	F	200	PHE
1	F	201	ASP
1	G	90	GLN
1	G	151	PHE
1	G	177	THR
1	G	201	ASP
1	G	232	GLU
1	H	90	GLN
1	H	201	ASP
1	H	280	ARG

Some sidechains can be flipped to improve hydrogen bonding and reduce clashes. All (3) such sidechains are listed below:

Mol	Chain	Res	Type
1	C	131	HIS
1	D	229	GLN
1	E	247	HIS

### 5.3.3 RNA ⓘ

There are no RNA molecules in this entry.

## 5.4 Non-standard residues in protein, DNA, RNA chains ⓘ

There are no non-standard protein/DNA/RNA residues in this entry.

## 5.5 Carbohydrates ⓘ

There are no carbohydrates in this entry.

## 5.6 Ligand geometry ⓘ

2 ligands are modelled in this entry.

In the following table, the Counts columns list the number of bonds (or angles) for which Mogul statistics could be retrieved, the number of bonds (or angles) that are observed in the model and the number of bonds (or angles) that are defined in the Chemical Component Dictionary. The Link column lists molecule types, if any, to which the group is linked. The Z score for a bond length (or angle) is the number of standard deviations the observed value is removed from the expected value. A bond length (or angle) with  $|Z| > 2$  is considered an outlier worth inspection. RMSZ is the root-mean-square of all Z scores of the bond lengths (or angles).

Mol	Type	Chain	Res	Link	Bond lengths			Bond angles		
					Counts	RMSZ	$\# Z  > 2$	Counts	RMSZ	$\# Z  > 2$
2	MN9	F	401	-	13,14,14	0.57	0	14,18,18	1.10	1 (7%)
2	MN9	B	401	-	13,14,14	0.53	0	14,18,18	0.57	0

In the following table, the Chirals column lists the number of chiral outliers, the number of chiral centers analysed, the number of these observed in the model and the number defined in the Chemical Component Dictionary. Similar counts are reported in the Torsion and Rings columns. '-' means no outliers of that kind were identified.

Mol	Type	Chain	Res	Link	Chirals	Torsions	Rings
2	MN9	F	401	-	-	11/18/20/20	-
2	MN9	B	401	-	-	6/18/20/20	-

There are no bond length outliers.

All (1) bond angle outliers are listed below:

Mol	Chain	Res	Type	Atoms	Z	Observed( $^{\circ}$ )	Ideal( $^{\circ}$ )
2	F	401	MN9	C2-N2-C7	3.17	126.58	123.12

There are no chirality outliers.

All (17) torsion outliers are listed below:

Mol	Chain	Res	Type	Atoms
2	F	401	MN9	C-C2-N2-C7
2	F	401	MN9	N2-C2-C3-O3
2	F	401	MN9	N2-C2-C3-C4
2	F	401	MN9	C-C2-C3-O3
2	F	401	MN9	C-C2-C3-C4
2	F	401	MN9	C2-C3-C4-O4
2	F	401	MN9	C2-C3-C4-C5
2	B	401	MN9	C2-C3-C4-O4
2	B	401	MN9	C2-C3-C4-C5
2	B	401	MN9	O3-C3-C4-O4
2	B	401	MN9	O3-C3-C4-C5
2	B	401	MN9	O7-C7-N2-C2
2	F	401	MN9	O7-C7-N2-C2
2	F	401	MN9	C8-C7-N2-C2
2	B	401	MN9	C8-C7-N2-C2
2	F	401	MN9	O3-C3-C4-C5
2	F	401	MN9	O3-C3-C4-O4

There are no ring outliers.

2 monomers are involved in 23 short contacts:

Mol	Chain	Res	Type	Clashes	Symm-Clashes
2	F	401	MN9	13	0
2	B	401	MN9	10	0

## 5.7 Other polymers [i](#)

There are no such residues in this entry.

## 5.8 Polymer linkage issues [i](#)

There are no chain breaks in this entry.

## 6 Fit of model and data ⓘ

### 6.1 Protein, DNA and RNA chains ⓘ

In the following table, the column labelled ‘#RSRZ> 2’ contains the number (and percentage) of RSRZ outliers, followed by percent RSRZ outliers for the chain as percentile scores relative to all X-ray entries and entries of similar resolution. The OWAB column contains the minimum, median, 95<sup>th</sup> percentile and maximum values of the occupancy-weighted average B-factor per residue. The column labelled ‘Q< 0.9’ lists the number of (and percentage) of residues with an average occupancy less than 0.9.

Mol	Chain	Analysed	<RSRZ>	#RSRZ>2	OWAB(Å <sup>2</sup> )	Q<0.9
1	A	290/302 (96%)	0.14	16 (5%) 25 34	23, 34, 53, 71	0
1	B	290/302 (96%)	-0.09	10 (3%) 45 55	20, 28, 49, 61	0
1	C	289/302 (95%)	-0.01	10 (3%) 44 53	20, 29, 57, 79	0
1	D	290/302 (96%)	0.32	16 (5%) 25 34	26, 36, 59, 76	0
1	E	290/302 (96%)	0.09	12 (4%) 37 46	22, 33, 56, 77	0
1	F	290/302 (96%)	-0.06	11 (3%) 40 50	21, 31, 53, 71	0
1	G	290/302 (96%)	-0.06	10 (3%) 45 55	22, 31, 49, 58	0
1	H	290/302 (96%)	0.11	8 (2%) 53 62	23, 33, 50, 59	0
All	All	2319/2416 (95%)	0.05	93 (4%) 38 48	20, 32, 53, 79	0

All (93) RSRZ outliers are listed below:

Mol	Chain	Res	Type	RSRZ
1	C	149	ILE	7.7
1	B	151	PHE	7.1
1	E	149	ILE	6.9
1	F	151	PHE	6.7
1	E	153	THR	6.6
1	A	151	PHE	6.5
1	D	151	PHE	6.1
1	E	151	PHE	6.0
1	D	150	PRO	5.9
1	D	155	VAL	5.2
1	D	152	LEU	5.1
1	C	151	PHE	5.1
1	A	152	LEU	5.1
1	G	149	ILE	5.0
1	E	156	ASP	4.7
1	H	149	ILE	4.7

*Continued on next page...*

*Continued from previous page...*

Mol	Chain	Res	Type	RSRZ
1	A	149	ILE	4.5
1	D	176	PHE	4.5
1	E	13	THR	4.5
1	F	13	THR	4.4
1	D	146	ILE	4.4
1	C	179	ALA	4.4
1	G	13	THR	4.4
1	H	13	THR	4.3
1	D	13	THR	4.1
1	D	153	THR	4.1
1	D	149	ILE	4.0
1	D	177	THR	4.0
1	F	155	VAL	3.9
1	H	151	PHE	3.9
1	C	153	THR	3.8
1	E	150	PRO	3.8
1	D	179	ALA	3.6
1	C	155	VAL	3.6
1	E	148	SER	3.6
1	D	154	GLY	3.6
1	E	155	VAL	3.6
1	C	156	ASP	3.5
1	E	154	GLY	3.5
1	F	149	ILE	3.4
1	B	155	VAL	3.4
1	C	152	LEU	3.3
1	A	156	ASP	3.3
1	B	152	LEU	3.2
1	B	176	PHE	3.2
1	C	154	GLY	3.1
1	F	146	ILE	3.1
1	G	154	GLY	3.0
1	C	147	TYR	3.0
1	D	156	ASP	3.0
1	G	151	PHE	3.0
1	E	152	LEU	3.0
1	H	155	VAL	2.9
1	B	156	ASP	2.9
1	G	176	PHE	2.9
1	A	150	PRO	2.8
1	D	14	ASP	2.8
1	B	149	ILE	2.8

*Continued on next page...*

*Continued from previous page...*

Mol	Chain	Res	Type	RSRZ
1	G	146	ILE	2.8
1	B	154	GLY	2.8
1	A	139	SER	2.8
1	A	13	THR	2.7
1	A	153	THR	2.7
1	A	155	VAL	2.7
1	B	146	ILE	2.6
1	G	174	VAL	2.6
1	H	156	ASP	2.6
1	F	153	THR	2.5
1	F	156	ASP	2.4
1	C	299	ARG	2.4
1	D	147	TYR	2.4
1	H	150	PRO	2.4
1	B	174	VAL	2.4
1	A	147	TYR	2.3
1	A	29	GLU	2.3
1	H	193	ASN	2.3
1	A	94	VAL	2.3
1	G	299	ARG	2.2
1	A	68	ASP	2.2
1	A	146	ILE	2.2
1	F	169	GLU	2.2
1	D	299	ARG	2.1
1	G	141	ASP	2.1
1	A	88	ILE	2.1
1	E	146	ILE	2.1
1	F	152	LEU	2.1
1	B	299	ARG	2.1
1	G	156	ASP	2.1
1	F	154	GLY	2.1
1	H	179	ALA	2.1
1	A	141	ASP	2.1
1	E	147	TYR	2.1
1	F	200	PHE	2.0

## 6.2 Non-standard residues in protein, DNA, RNA chains ⓘ

There are no non-standard protein/DNA/RNA residues in this entry.

### 6.3 Carbohydrates [i](#)

There are no carbohydrates in this entry.

### 6.4 Ligands [i](#)

In the following table, the Atoms column lists the number of modelled atoms in the group and the number defined in the chemical component dictionary. The B-factors column lists the minimum, median, 95<sup>th</sup> percentile and maximum values of B factors of atoms in the group. The column labelled 'Q< 0.9' lists the number of atoms with occupancy less than 0.9.

Mol	Type	Chain	Res	Atoms	RSCC	RSR	B-factors( $\text{\AA}^2$ )	Q<0.9
2	MN9	F	401	15/15	0.54	0.41	90,93,95,95	0
2	MN9	B	401	15/15	0.67	0.41	89,90,94,95	0

### 6.5 Other polymers [i](#)

There are no such residues in this entry.