



Full wwPDB X-ray Structure Validation Report ⓘ

May 16, 2020 – 07:30 am BST

PDB ID : 5WQI
Title : Structure of fungal meroterpenoid isomerase Trt14 complexed with hydrolyzed product
Authors : Mori, T.; Matsuda, Y.; Abe, I.
Deposited on : 2016-11-27
Resolution : 1.90 Å(reported)

This is a Full wwPDB X-ray Structure Validation Report for a publicly released PDB entry.

We welcome your comments at validation@mail.wwpdb.org

A user guide is available at

<https://www.wwpdb.org/validation/2017/XrayValidationReportHelp>

with specific help available everywhere you see the ⓘ symbol.

The following versions of software and data (see [references ⓘ](#)) were used in the production of this report:

MolProbity : 4.02b-467
Mogul : 1.8.5 (274361), CSD as541be (2020)
Xtriage (Phenix) : 1.13
EDS : 2.11
buster-report : 1.1.7 (2018)
Percentile statistics : 20191225.v01 (using entries in the PDB archive December 25th 2019)
Refmac : 5.8.0158
CCP4 : 7.0.044 (Gargrove)
Ideal geometry (proteins) : Engh & Huber (2001)
Ideal geometry (DNA, RNA) : Parkinson et al. (1996)
Validation Pipeline (wwPDB-VP) : 2.11

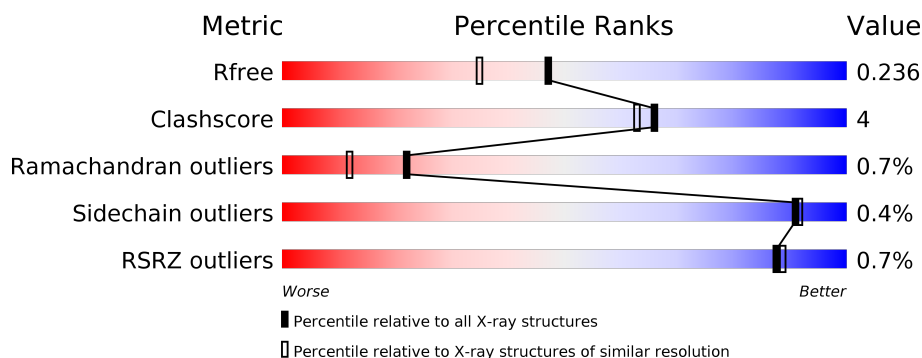
1 Overall quality at a glance

The following experimental techniques were used to determine the structure:

X-RAY DIFFRACTION

The reported resolution of this entry is 1.90 Å.

Percentile scores (ranging between 0-100) for global validation metrics of the entry are shown in the following graphic. The table shows the number of entries on which the scores are based.



Metric	Whole archive (#Entries)	Similar resolution (#Entries, resolution range(Å))
R_{free}	130704	6207 (1.90-1.90)
Clashscore	141614	6847 (1.90-1.90)
Ramachandran outliers	138981	6760 (1.90-1.90)
Sidechain outliers	138945	6760 (1.90-1.90)
RSRZ outliers	127900	6082 (1.90-1.90)

The table below summarises the geometric issues observed across the polymeric chains and their fit to the electron density. The red, orange, yellow and green segments on the lower bar indicate the fraction of residues that contain outliers for ≥ 3 , 2, 1 and 0 types of geometric quality criteria respectively. A grey segment represents the fraction of residues that are not modelled. The numeric value for each fraction is indicated below the corresponding segment, with a dot representing fractions $\leq 5\%$. The upper red bar (where present) indicates the fraction of residues that have poor fit to the electron density. The numeric value is given above the bar.

Mol	Chain	Length	Quality of chain
1	A	162	<div> <div></div> <div>81%6%14%</div> </div>
1	B	162	<div> <div></div> <div>78%8%14%</div> </div>
1	C	162	<div> <div>%</div> <div>77%9%14%</div> </div>
1	D	162	<div> <div>%</div> <div>81%6%14%</div> </div>
1	E	162	<div> <div>2%</div> <div>78%8%14%</div> </div>
1	F	162	<div> <div></div> <div>77%7%14%</div> </div>

2 Entry composition

There are 4 unique types of molecules in this entry. The entry contains 7639 atoms, of which 0 are hydrogens and 0 are deuteriums.

In the tables below, the ZeroOcc column contains the number of atoms modelled with zero occupancy, the AltConf column contains the number of residues with at least one atom in alternate conformation and the Trace column contains the number of residues modelled with at most 2 atoms.

- Molecule 1 is a protein called Isomerase trt14.

Mol	Chain	Residues	Atoms					ZeroOcc	AltConf	Trace
1	A	140	Total	C	N	O	S	0	0	0
			1119	707	188	219	5			
1	B	140	Total	C	N	O	S	0	0	0
			1119	707	188	219	5			
1	C	140	Total	C	N	O	S	0	0	0
			1119	707	188	219	5			
1	D	140	Total	C	N	O	S	0	0	0
			1119	707	188	219	5			
1	E	140	Total	C	N	O	S	0	0	0
			1119	707	188	219	5			
1	F	139	Total	C	N	O	S	0	0	0
			1108	698	187	218	5			

There are 120 discrepancies between the modelled and reference sequences:

Chain	Residue	Modelled	Actual	Comment	Reference
A	-19	MET	-	expression tag	UNP Q0C8A2
A	-18	GLY	-	expression tag	UNP Q0C8A2
A	-17	SER	-	expression tag	UNP Q0C8A2
A	-16	SER	-	expression tag	UNP Q0C8A2
A	-15	HIS	-	expression tag	UNP Q0C8A2
A	-14	HIS	-	expression tag	UNP Q0C8A2
A	-13	HIS	-	expression tag	UNP Q0C8A2
A	-12	HIS	-	expression tag	UNP Q0C8A2
A	-11	HIS	-	expression tag	UNP Q0C8A2
A	-10	HIS	-	expression tag	UNP Q0C8A2
A	-9	SER	-	expression tag	UNP Q0C8A2
A	-8	SER	-	expression tag	UNP Q0C8A2
A	-7	GLY	-	expression tag	UNP Q0C8A2
A	-6	LEU	-	expression tag	UNP Q0C8A2
A	-5	VAL	-	expression tag	UNP Q0C8A2
A	-4	PRO	-	expression tag	UNP Q0C8A2
A	-3	ARG	-	expression tag	UNP Q0C8A2

Continued on next page...

Continued from previous page...

Chain	Residue	Modelled	Actual	Comment	Reference
A	-2	GLY	-	expression tag	UNP Q0C8A2
A	-1	SER	-	expression tag	UNP Q0C8A2
A	0	HIS	-	expression tag	UNP Q0C8A2
B	-19	MET	-	expression tag	UNP Q0C8A2
B	-18	GLY	-	expression tag	UNP Q0C8A2
B	-17	SER	-	expression tag	UNP Q0C8A2
B	-16	SER	-	expression tag	UNP Q0C8A2
B	-15	HIS	-	expression tag	UNP Q0C8A2
B	-14	HIS	-	expression tag	UNP Q0C8A2
B	-13	HIS	-	expression tag	UNP Q0C8A2
B	-12	HIS	-	expression tag	UNP Q0C8A2
B	-11	HIS	-	expression tag	UNP Q0C8A2
B	-10	HIS	-	expression tag	UNP Q0C8A2
B	-9	SER	-	expression tag	UNP Q0C8A2
B	-8	SER	-	expression tag	UNP Q0C8A2
B	-7	GLY	-	expression tag	UNP Q0C8A2
B	-6	LEU	-	expression tag	UNP Q0C8A2
B	-5	VAL	-	expression tag	UNP Q0C8A2
B	-4	PRO	-	expression tag	UNP Q0C8A2
B	-3	ARG	-	expression tag	UNP Q0C8A2
B	-2	GLY	-	expression tag	UNP Q0C8A2
B	-1	SER	-	expression tag	UNP Q0C8A2
B	0	HIS	-	expression tag	UNP Q0C8A2
C	-19	MET	-	expression tag	UNP Q0C8A2
C	-18	GLY	-	expression tag	UNP Q0C8A2
C	-17	SER	-	expression tag	UNP Q0C8A2
C	-16	SER	-	expression tag	UNP Q0C8A2
C	-15	HIS	-	expression tag	UNP Q0C8A2
C	-14	HIS	-	expression tag	UNP Q0C8A2
C	-13	HIS	-	expression tag	UNP Q0C8A2
C	-12	HIS	-	expression tag	UNP Q0C8A2
C	-11	HIS	-	expression tag	UNP Q0C8A2
C	-10	HIS	-	expression tag	UNP Q0C8A2
C	-9	SER	-	expression tag	UNP Q0C8A2
C	-8	SER	-	expression tag	UNP Q0C8A2
C	-7	GLY	-	expression tag	UNP Q0C8A2
C	-6	LEU	-	expression tag	UNP Q0C8A2
C	-5	VAL	-	expression tag	UNP Q0C8A2
C	-4	PRO	-	expression tag	UNP Q0C8A2
C	-3	ARG	-	expression tag	UNP Q0C8A2
C	-2	GLY	-	expression tag	UNP Q0C8A2
C	-1	SER	-	expression tag	UNP Q0C8A2

Continued on next page...

Continued from previous page...

Chain	Residue	Modelled	Actual	Comment	Reference
C	0	HIS	-	expression tag	UNP Q0C8A2
D	-19	MET	-	expression tag	UNP Q0C8A2
D	-18	GLY	-	expression tag	UNP Q0C8A2
D	-17	SER	-	expression tag	UNP Q0C8A2
D	-16	SER	-	expression tag	UNP Q0C8A2
D	-15	HIS	-	expression tag	UNP Q0C8A2
D	-14	HIS	-	expression tag	UNP Q0C8A2
D	-13	HIS	-	expression tag	UNP Q0C8A2
D	-12	HIS	-	expression tag	UNP Q0C8A2
D	-11	HIS	-	expression tag	UNP Q0C8A2
D	-10	HIS	-	expression tag	UNP Q0C8A2
D	-9	SER	-	expression tag	UNP Q0C8A2
D	-8	SER	-	expression tag	UNP Q0C8A2
D	-7	GLY	-	expression tag	UNP Q0C8A2
D	-6	LEU	-	expression tag	UNP Q0C8A2
D	-5	VAL	-	expression tag	UNP Q0C8A2
D	-4	PRO	-	expression tag	UNP Q0C8A2
D	-3	ARG	-	expression tag	UNP Q0C8A2
D	-2	GLY	-	expression tag	UNP Q0C8A2
D	-1	SER	-	expression tag	UNP Q0C8A2
D	0	HIS	-	expression tag	UNP Q0C8A2
E	-19	MET	-	expression tag	UNP Q0C8A2
E	-18	GLY	-	expression tag	UNP Q0C8A2
E	-17	SER	-	expression tag	UNP Q0C8A2
E	-16	SER	-	expression tag	UNP Q0C8A2
E	-15	HIS	-	expression tag	UNP Q0C8A2
E	-14	HIS	-	expression tag	UNP Q0C8A2
E	-13	HIS	-	expression tag	UNP Q0C8A2
E	-12	HIS	-	expression tag	UNP Q0C8A2
E	-11	HIS	-	expression tag	UNP Q0C8A2
E	-10	HIS	-	expression tag	UNP Q0C8A2
E	-9	SER	-	expression tag	UNP Q0C8A2
E	-8	SER	-	expression tag	UNP Q0C8A2
E	-7	GLY	-	expression tag	UNP Q0C8A2
E	-6	LEU	-	expression tag	UNP Q0C8A2
E	-5	VAL	-	expression tag	UNP Q0C8A2
E	-4	PRO	-	expression tag	UNP Q0C8A2
E	-3	ARG	-	expression tag	UNP Q0C8A2
E	-2	GLY	-	expression tag	UNP Q0C8A2
E	-1	SER	-	expression tag	UNP Q0C8A2
E	0	HIS	-	expression tag	UNP Q0C8A2
F	-19	MET	-	expression tag	UNP Q0C8A2

Continued on next page...

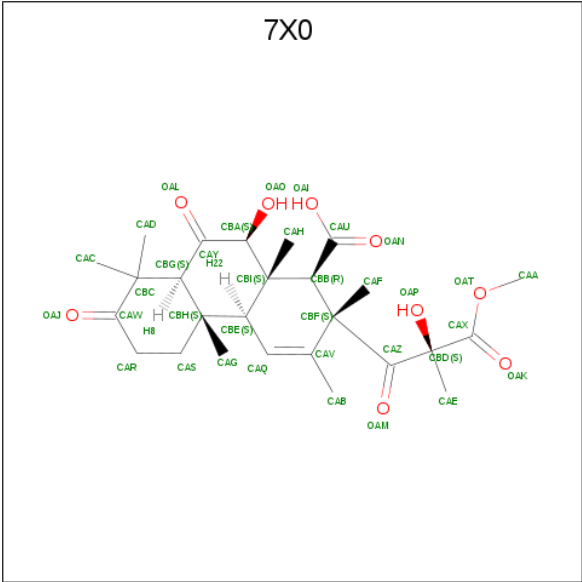
Continued from previous page...

Chain	Residue	Modelled	Actual	Comment	Reference
F	-18	GLY	-	expression tag	UNP Q0C8A2
F	-17	SER	-	expression tag	UNP Q0C8A2
F	-16	SER	-	expression tag	UNP Q0C8A2
F	-15	HIS	-	expression tag	UNP Q0C8A2
F	-14	HIS	-	expression tag	UNP Q0C8A2
F	-13	HIS	-	expression tag	UNP Q0C8A2
F	-12	HIS	-	expression tag	UNP Q0C8A2
F	-11	HIS	-	expression tag	UNP Q0C8A2
F	-10	HIS	-	expression tag	UNP Q0C8A2
F	-9	SER	-	expression tag	UNP Q0C8A2
F	-8	SER	-	expression tag	UNP Q0C8A2
F	-7	GLY	-	expression tag	UNP Q0C8A2
F	-6	LEU	-	expression tag	UNP Q0C8A2
F	-5	VAL	-	expression tag	UNP Q0C8A2
F	-4	PRO	-	expression tag	UNP Q0C8A2
F	-3	ARG	-	expression tag	UNP Q0C8A2
F	-2	GLY	-	expression tag	UNP Q0C8A2
F	-1	SER	-	expression tag	UNP Q0C8A2
F	0	HIS	-	expression tag	UNP Q0C8A2

- Molecule 2 is CALCIUM ION (three-letter code: CA) (formula: Ca).

Mol	Chain	Residues	Atoms	ZeroOcc	AltConf
2	D	1	Total Ca 1 1	0	0
2	E	1	Total Ca 1 1	0	0
2	B	1	Total Ca 1 1	0	0
2	C	1	Total Ca 1 1	0	0
2	A	2	Total Ca 2 2	0	0
2	F	1	Total Ca 1 1	0	0

- Molecule 3 is (1R,2S,4aS,4bS,8aS,10S,10aS)-2-[(2S)-3-methoxy-2-methyl-2-oxidanyl-3-oxidanylidene-propanoyl]-2,3,4b,8,8,10a-hexamethyl-10-oxidanyl-7,9-bis(oxidanylidene)-1,4a,5,6,8a,10-hexahydrophenanthrene-1-carboxylic acid (three-letter code: 7X0) (formula: C₂₆H₃₆O₉).



Mol	Chain	Residues	Atoms			ZeroOcc	AltConf
3	A	1	Total	C	O	0	0
			35	26	9		
3	B	1	Total	C	O	0	0
			35	26	9		
3	C	1	Total	C	O	0	0
			35	26	9		
3	D	1	Total	C	O	0	0
			35	26	9		
3	E	1	Total	C	O	0	0
			35	26	9		
3	F	1	Total	C	O	0	0
			35	26	9		


- Molecule 4 is water.

Mol	Chain	Residues	Atoms		ZeroOcc	AltConf
4	A	167	Total	O	0	0
			167	167		
4	B	163	Total	O	0	0
			163	163		
4	C	109	Total	O	0	0
			109	109		
4	D	103	Total	O	0	0
			103	103		
4	E	66	Total	O	0	0
			66	66		
4	F	111	Total	O	0	0
			111	111		

3 Residue-property plots [i](#)


These plots are drawn for all protein, RNA and DNA chains in the entry. The first graphic for a chain summarises the proportions of the various outlier classes displayed in the second graphic. The second graphic shows the sequence view annotated by issues in geometry and electron density. Residues are color-coded according to the number of geometric quality criteria for which they contain at least one outlier: green = 0, yellow = 1, orange = 2 and red = 3 or more. A red dot above a residue indicates a poor fit to the electron density ($RSRZ > 2$). Stretches of 2 or more consecutive residues without any outlier are shown as a green connector. Residues present in the sample, but not in the model, are shown in grey.

• Molecule 1: Isomerase trt14

Chain A: 




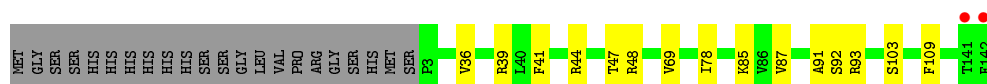
• Molecule 1: Isomerase trt14

Chain B: 




• Molecule 1: Isomerase trt14

Chain C: 



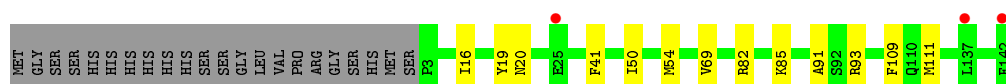
• Molecule 1: Isomerase trt14

Chain D: 



• Molecule 1: Isomerase trt14

Chain E: 



• Molecule 1: Isomerase trt14

Chain F: 

MET	GLY	SER	SER	HIS	HIS	HIS	HIS	HIS	HIS	SER	SER	GLY	LEU	VAL	PRO	ARG	GLY	SER	HIS	MET	SER	P3	T4	R5	E25	I28	F41	P42	I50	V69	S70	V79	K85	A91	V98	F109	L137	T141	PHE
-----	-----	-----	-----	-----	-----	-----	-----	-----	-----	-----	-----	-----	-----	-----	-----	-----	-----	-----	-----	-----	-----	----	----	----	-----	-----	-----	-----	-----	-----	-----	-----	-----	-----	-----	------	------	------	-----

4 Data and refinement statistics

Property	Value	Source
Space group	P 1 21 1	Depositor
Cell constants a, b, c, α , β , γ	99.52Å 47.53Å 121.21Å 90.00° 108.09° 90.00°	Depositor
Resolution (Å)	47.30 – 1.90 47.30 – 1.90	Depositor EDS
% Data completeness (in resolution range)	99.2 (47.30-1.90) 99.2 (47.30-1.90)	Depositor EDS
R_{merge}	0.10	Depositor
R_{sym}	(Not available)	Depositor
$\langle I/\sigma(I) \rangle$ ¹	1.26 (at 1.90Å)	Xtriage
Refinement program	PHENIX (1.10.1 _2155: ???)	Depositor
R, R_{free}	0.198 , 0.236 0.198 , 0.236	Depositor DCC
R_{free} test set	4258 reflections (5.00%)	wwPDB-VP
Wilson B-factor (Å ²)	23.9	Xtriage
Anisotropy	0.560	Xtriage
Bulk solvent k_{sol} (e/Å ³), B_{sol} (Å ²)	0.37 , 48.1	EDS
L-test for twinning ²	$\langle L \rangle = 0.48$, $\langle L^2 \rangle = 0.32$	Xtriage
Estimated twinning fraction	No twinning to report.	Xtriage
F_o, F_c correlation	0.95	EDS
Total number of atoms	7639	wwPDB-VP
Average B, all atoms (Å ²)	29.0	wwPDB-VP

Xtriage's analysis on translational NCS is as follows: *The largest off-origin peak in the Patterson function is 4.76% of the height of the origin peak. No significant pseudotranslation is detected.*

¹Intensities estimated from amplitudes.

²Theoretical values of $\langle |L| \rangle$, $\langle L^2 \rangle$ for acentric reflections are 0.5, 0.333 respectively for untwinned datasets, and 0.375, 0.2 for perfectly twinned datasets.

5 Model quality [i](#)

5.1 Standard geometry [i](#)

Bond lengths and bond angles in the following residue types are not validated in this section: CA, 7X0

The Z score for a bond length (or angle) is the number of standard deviations the observed value is removed from the expected value. A bond length (or angle) with $|Z| > 5$ is considered an outlier worth inspection. RMSZ is the root-mean-square of all Z scores of the bond lengths (or angles).

Mol	Chain	Bond lengths		Bond angles	
		RMSZ	$\# Z > 5$	RMSZ	$\# Z > 5$
1	A	0.39	0/1140	0.57	0/1541
1	B	0.39	0/1140	0.55	0/1541
1	C	0.34	0/1140	0.53	0/1541
1	D	0.35	0/1140	0.55	0/1541
1	E	0.32	0/1140	0.50	0/1541
1	F	0.32	0/1128	0.52	0/1525
All	All	0.35	0/6828	0.54	0/9230

There are no bond length outliers.

There are no bond angle outliers.

There are no chirality outliers.

There are no planarity outliers.

5.2 Too-close contacts [i](#)

In the following table, the Non-H and H(model) columns list the number of non-hydrogen atoms and hydrogen atoms in the chain respectively. The H(added) column lists the number of hydrogen atoms added and optimized by MolProbity. The Clashes column lists the number of clashes within the asymmetric unit, whereas Symm-Clashes lists symmetry related clashes.

Mol	Chain	Non-H	H(model)	H(added)	Clashes	Symm-Clashes
1	A	1119	0	1094	5	0
1	B	1119	0	1094	8	0
1	C	1119	0	1094	13	0
1	D	1119	0	1094	6	0
1	E	1119	0	1094	8	0
1	F	1108	0	1085	7	1
2	A	2	0	0	0	0

Continued on next page...

Continued from previous page...

Mol	Chain	Non-H	H(model)	H(added)	Clashes	Symm-Clashes
2	B	1	0	0	0	0
2	C	1	0	0	0	0
2	D	1	0	0	0	0
2	E	1	0	0	0	0
2	F	1	0	0	0	0
3	A	35	0	0	3	0
3	B	35	0	0	2	0
3	C	35	0	0	4	0
3	D	35	0	0	2	0
3	E	35	0	0	1	0
3	F	35	0	0	0	0
4	A	167	0	0	1	2
4	B	163	0	0	1	2
4	C	109	0	0	0	0
4	D	103	0	0	1	1
4	E	66	0	0	0	0
4	F	111	0	0	0	1
All	All	7639	0	6555	54	4

The all-atom clashscore is defined as the number of clashes found per 1000 atoms (including hydrogen atoms). The all-atom clashscore for this structure is 4.

All (54) close contacts within the same asymmetric unit are listed below, sorted by their clash magnitude.

Atom-1	Atom-2	Interatomic distance (Å)	Clash overlap (Å)
3:A:203:7X0:OAN	3:A:203:7X0:OAP	1.94	0.84
3:B:202:7X0:OAP	3:B:202:7X0:OAN	2.00	0.78
1:C:92:SER:O	1:C:93:ARG:NH1	2.26	0.69
1:C:39:ARG:NH2	3:C:202:7X0:OAO	2.22	0.63
3:A:203:7X0:OAI	3:A:203:7X0:OAO	2.17	0.62
3:D:202:7X0:OAN	3:D:202:7X0:OAP	2.16	0.62
1:D:102:LYS:NZ	4:D:301:HOH:O	2.17	0.60
1:D:39:ARG:HB2	1:D:46:ALA:H	1.69	0.58
3:C:202:7X0:OAI	3:C:202:7X0:OAP	2.25	0.55
1:F:28:ILE:HB	1:F:50:ILE:HD12	1.90	0.53
1:D:114:ASP:CG	1:D:116:LYS:HE2	2.29	0.52
1:C:39:ARG:HD2	1:C:44:ARG:O	2.12	0.50
1:C:93:ARG:HH12	1:C:103:SER:N	2.10	0.49
1:A:126:ASP:OD2	1:D:43:THR:HG23	2.12	0.49
1:A:133:PHE:HA	1:A:136:ARG:HD3	1.95	0.48
1:B:44:ARG:HD2	1:B:130:MET:HE3	1.96	0.48

Continued on next page...

Continued from previous page...

Atom-1	Atom-2	Interatomic distance (Å)	Clash overlap (Å)
1:C:48:ARG:NH1	3:C:202:7X0:OAI	2.42	0.48
1:E:82:ARG:NH1	1:F:5:ARG:HD3	2.28	0.48
1:B:120:ARG:HD2	1:B:122:TRP:CZ2	2.50	0.47
3:C:202:7X0:CAU	3:C:202:7X0:OAP	2.63	0.47
1:E:16:ILE:O	1:E:20:ASN:ND2	2.45	0.47
1:C:39:ARG:HD3	1:C:44:ARG:HB3	1.96	0.47
1:C:93:ARG:HH12	1:C:103:SER:H	1.62	0.47
1:B:118:VAL:HG11	1:B:121:ILE:HG12	1.97	0.46
1:D:85:LYS:HA	1:D:109:PHE:O	2.15	0.46
1:E:19:TYR:CD1	1:E:69:VAL:HG11	2.50	0.46
1:E:69:VAL:HA	1:E:91:ALA:O	2.16	0.46
3:D:202:7X0:OAO	3:D:202:7X0:OAI	2.35	0.45
1:E:85:LYS:HA	1:E:109:PHE:O	2.17	0.45
1:C:93:ARG:NH1	1:C:103:SER:H	2.14	0.45
1:E:19:TYR:HE2	3:E:202:7X0:OAM	1.99	0.44
1:C:69:VAL:HA	1:C:91:ALA:O	2.16	0.44
1:F:69:VAL:HA	1:F:91:ALA:O	2.18	0.44
1:C:36:VAL:CG1	1:C:47:THR:HG23	2.48	0.44
1:F:85:LYS:HA	1:F:109:PHE:O	2.18	0.44
1:A:84:ARG:NH2	4:A:303:HOH:O	2.44	0.43
1:D:102:LYS:HA	1:D:102:LYS:HD2	1.80	0.43
1:C:78:ILE:HB	1:C:87:VAL:HB	2.00	0.43
1:E:50:ILE:O	1:E:54:MET:HG3	2.18	0.43
1:A:85:LYS:HA	1:A:109:PHE:O	2.18	0.43
1:F:5:ARG:HB2	1:F:79:VAL:HG11	2.01	0.43
3:A:203:7X0:CAX	3:A:203:7X0:CBB	2.96	0.42
1:C:85:LYS:HA	1:C:109:PHE:O	2.18	0.42
1:B:127:THR:HG22	1:B:130:MET:CE	2.50	0.42
1:B:69:VAL:HA	1:B:91:ALA:O	2.20	0.42
1:B:44:ARG:NH2	1:B:134:GLU:OE1	2.50	0.42
1:C:36:VAL:HG13	1:C:47:THR:HG23	2.02	0.42
3:B:202:7X0:OAO	3:B:202:7X0:OAI	2.38	0.42
1:F:98:VAL:HG11	1:F:137:LEU:HA	2.02	0.41
1:A:13:LYS:HE2	1:A:71:VAL:HG21	2.03	0.41
1:B:31:ARG:HD2	1:B:121:ILE:HD11	2.03	0.41
1:B:84:ARG:NH2	4:B:302:HOH:O	2.34	0.40
1:E:19:TYR:HD1	1:E:69:VAL:HG11	1.86	0.40
1:F:41:PHE:HA	1:F:42:PRO:HD3	1.97	0.40

All (4) symmetry-related close contacts are listed below. The label for Atom-2 includes the symmetry operator and encoded unit-cell translations to be applied.

Atom-1	Atom-2	Interatomic distance (Å)	Clash overlap (Å)
4:A:441:HOH:O	4:B:380:HOH:O[2_655]	1.78	0.42
1:F:25:GLU:OE2	1:F:70:SER:OG[2_556]	2.08	0.12
4:D:303:HOH:O	4:F:389:HOH:O[1_655]	2.15	0.05
4:A:302:HOH:O	4:B:401:HOH:O[2_655]	2.16	0.04

5.3 Torsion angles

5.3.1 Protein backbone

In the following table, the Percentiles column shows the percent Ramachandran outliers of the chain as a percentile score with respect to all X-ray entries followed by that with respect to entries of similar resolution.

The Analysed column shows the number of residues for which the backbone conformation was analysed, and the total number of residues.

Mol	Chain	Analysed	Favoured	Allowed	Outliers	Percentiles	
1	A	138/162 (85%)	137 (99%)	0	1 (1%)	22	12
1	B	138/162 (85%)	137 (99%)	0	1 (1%)	22	12
1	C	138/162 (85%)	136 (99%)	1 (1%)	1 (1%)	22	12
1	D	138/162 (85%)	137 (99%)	0	1 (1%)	22	12
1	E	138/162 (85%)	136 (99%)	1 (1%)	1 (1%)	22	12
1	F	137/162 (85%)	136 (99%)	0	1 (1%)	22	12
All	All	827/972 (85%)	819 (99%)	2 (0%)	6 (1%)	22	12

All (6) Ramachandran outliers are listed below:

Mol	Chain	Res	Type
1	A	41	PHE
1	B	41	PHE
1	D	41	PHE
1	E	41	PHE
1	F	41	PHE
1	C	41	PHE

5.3.2 Protein sidechains

In the following table, the Percentiles column shows the percent sidechain outliers of the chain as a percentile score with respect to all X-ray entries followed by that with respect to entries of similar resolution.

The Analysed column shows the number of residues for which the sidechain conformation was analysed, and the total number of residues.

Mol	Chain	Analysed	Rotameric	Outliers	Percentiles	
1	A	124/143 (87%)	124 (100%)	0	100	100
1	B	124/143 (87%)	124 (100%)	0	100	100
1	C	124/143 (87%)	124 (100%)	0	100	100
1	D	124/143 (87%)	124 (100%)	0	100	100
1	E	124/143 (87%)	122 (98%)	2 (2%)	62	60
1	F	123/143 (86%)	122 (99%)	1 (1%)	81	82
All	All	743/858 (87%)	740 (100%)	3 (0%)	91	91

All (3) residues with a non-rotameric sidechain are listed below:

Mol	Chain	Res	Type
1	E	93	ARG
1	E	111	MET
1	F	5	ARG

Some sidechains can be flipped to improve hydrogen bonding and reduce clashes. All (1) such sidechains are listed below:

Mol	Chain	Res	Type
1	A	34	ASN

5.3.3 RNA ⓘ

There are no RNA molecules in this entry.

5.4 Non-standard residues in protein, DNA, RNA chains ⓘ

There are no non-standard protein/DNA/RNA residues in this entry.

5.5 Carbohydrates ⓘ

There are no carbohydrates in this entry.

5.6 Ligand geometry

Of 13 ligands modelled in this entry, 7 are monoatomic - leaving 6 for Mogul analysis.

In the following table, the Counts columns list the number of bonds (or angles) for which Mogul statistics could be retrieved, the number of bonds (or angles) that are observed in the model and the number of bonds (or angles) that are defined in the Chemical Component Dictionary. The Link column lists molecule types, if any, to which the group is linked. The Z score for a bond length (or angle) is the number of standard deviations the observed value is removed from the expected value. A bond length (or angle) with $|Z| > 2$ is considered an outlier worth inspection. RMSZ is the root-mean-square of all Z scores of the bond lengths (or angles).

Mol	Type	Chain	Res	Link	Bond lengths			Bond angles		
					Counts	RMSZ	# Z > 2	Counts	RMSZ	# Z > 2
3	7X0	B	202	-	30,37,37	3.49	15 (50%)	38,64,64	1.32	5 (13%)
3	7X0	A	203	-	30,37,37	3.75	14 (46%)	38,64,64	1.62	8 (21%)
3	7X0	F	202	-	30,37,37	3.74	13 (43%)	38,64,64	2.13	9 (23%)
3	7X0	C	202	-	30,37,37	4.52	14 (46%)	38,64,64	1.82	13 (34%)
3	7X0	E	202	-	30,37,37	3.93	16 (53%)	38,64,64	2.08	10 (26%)
3	7X0	D	202	-	30,37,37	3.56	13 (43%)	38,64,64	2.16	5 (13%)

In the following table, the Chirals column lists the number of chiral outliers, the number of chiral centers analysed, the number of these observed in the model and the number defined in the Chemical Component Dictionary. Similar counts are reported in the Torsion and Rings columns. '-' means no outliers of that kind were identified.

Mol	Type	Chain	Res	Link	Chirals	Torsions	Rings
3	7X0	B	202	-	-	8/16/96/96	0/3/3/3
3	7X0	A	203	-	-	8/16/96/96	0/3/3/3
3	7X0	F	202	-	-	9/16/96/96	0/3/3/3
3	7X0	C	202	-	-	6/16/96/96	0/3/3/3
3	7X0	E	202	-	-	2/16/96/96	0/3/3/3
3	7X0	D	202	-	-	8/16/96/96	0/3/3/3

All (85) bond length outliers are listed below:

Mol	Chain	Res	Type	Atoms	Z	Observed(Å)	Ideal(Å)
3	C	202	7X0	CBA-CAY	-11.81	1.35	1.52
3	E	202	7X0	CBA-CAY	-10.40	1.37	1.52
3	C	202	7X0	CBC-CAW	-10.02	1.38	1.52
3	A	203	7X0	CBC-CAW	-9.82	1.39	1.52
3	E	202	7X0	CBC-CAW	-9.81	1.39	1.52

Continued on next page...

Continued from previous page...

Mol	Chain	Res	Type	Atoms	Z	Observed(Å)	Ideal(Å)
3	C	202	7X0	CBF-CAZ	-9.24	1.42	1.54
3	D	202	7X0	CBE-CAQ	-8.64	1.40	1.50
3	F	202	7X0	CBC-CAW	-8.49	1.40	1.52
3	F	202	7X0	CBA-CAY	-8.38	1.40	1.52
3	D	202	7X0	CBC-CAW	-8.18	1.41	1.52
3	B	202	7X0	CBC-CAW	-7.87	1.41	1.52
3	F	202	7X0	CBE-CAQ	-7.81	1.41	1.50
3	A	203	7X0	CBE-CAQ	-7.54	1.41	1.50
3	C	202	7X0	CBG-CAY	-7.39	1.39	1.51
3	A	203	7X0	CBA-CAY	-7.36	1.41	1.52
3	E	202	7X0	CBE-CAQ	-7.22	1.41	1.50
3	D	202	7X0	CBA-CAY	-7.16	1.42	1.52
3	B	202	7X0	CBA-CAY	-7.06	1.42	1.52
3	F	202	7X0	CBG-CAY	-7.02	1.39	1.51
3	C	202	7X0	CAR-CAW	-6.95	1.39	1.50
3	C	202	7X0	CBE-CAQ	-6.93	1.42	1.50
3	A	203	7X0	CAR-CAW	-6.65	1.40	1.50
3	B	202	7X0	CBE-CAQ	-6.64	1.42	1.50
3	F	202	7X0	CAR-CAW	-6.53	1.40	1.50
3	B	202	7X0	CAR-CAW	-6.42	1.40	1.50
3	E	202	7X0	CBG-CAY	-6.33	1.40	1.51
3	C	202	7X0	CBF-CBB	6.18	1.64	1.57
3	D	202	7X0	CAR-CAW	-5.97	1.41	1.50
3	A	203	7X0	CBG-CAY	-5.97	1.41	1.51
3	D	202	7X0	CBF-CAZ	-5.93	1.46	1.54
3	E	202	7X0	CAR-CAW	-5.87	1.41	1.50
3	D	202	7X0	CBG-CAY	-5.66	1.42	1.51
3	B	202	7X0	CBG-CAY	-5.62	1.42	1.51
3	A	203	7X0	CBF-CAZ	-5.57	1.47	1.54
3	F	202	7X0	CBF-CAZ	-5.55	1.47	1.54
3	E	202	7X0	CBF-CBB	5.46	1.63	1.57
3	B	202	7X0	CBF-CAZ	-5.45	1.47	1.54
3	F	202	7X0	CAB-CAV	-5.43	1.39	1.50
3	B	202	7X0	CAQ-CAV	4.79	1.40	1.33
3	C	202	7X0	CAQ-CAV	4.69	1.40	1.33
3	E	202	7X0	CAB-CAV	-4.69	1.41	1.50
3	D	202	7X0	CAQ-CAV	4.68	1.40	1.33
3	D	202	7X0	CAB-CAV	-4.57	1.41	1.50
3	B	202	7X0	CAB-CAV	-4.55	1.41	1.50
3	E	202	7X0	CAQ-CAV	4.54	1.40	1.33
3	A	203	7X0	CAQ-CAV	4.53	1.40	1.33
3	F	202	7X0	CAQ-CAV	4.45	1.40	1.33

Continued on next page...

Continued from previous page...

Mol	Chain	Res	Type	Atoms	Z	Observed(Å)	Ideal(Å)
3	A	203	7X0	CAB-CAV	-4.10	1.42	1.50
3	C	202	7X0	CAB-CAV	-4.03	1.42	1.50
3	C	202	7X0	OAP-CBD	3.76	1.48	1.42
3	B	202	7X0	OAT-CAX	3.62	1.40	1.33
3	A	203	7X0	CBF-CBB	3.49	1.61	1.57
3	D	202	7X0	OAT-CAX	3.00	1.39	1.33
3	B	202	7X0	OAM-CAZ	2.79	1.25	1.21
3	A	203	7X0	OAL-CAY	2.77	1.26	1.21
3	A	203	7X0	CBH-CBG	-2.76	1.53	1.56
3	E	202	7X0	CBI-CBB	2.75	1.61	1.56
3	A	203	7X0	OAM-CAZ	2.70	1.25	1.21
3	B	202	7X0	OAP-CBD	2.67	1.47	1.42
3	B	202	7X0	OAQ-CBA	2.61	1.47	1.42
3	E	202	7X0	OAQ-CAW	2.57	1.25	1.21
3	C	202	7X0	CAE-CBD	-2.55	1.48	1.53
3	C	202	7X0	OAM-CAZ	2.55	1.25	1.21
3	E	202	7X0	OAT-CAX	2.53	1.38	1.33
3	D	202	7X0	OAM-CAZ	2.52	1.25	1.21
3	D	202	7X0	OAK-CAX	2.45	1.26	1.20
3	C	202	7X0	OAK-CAX	2.39	1.26	1.20
3	F	202	7X0	CBF-CBB	2.38	1.60	1.57
3	E	202	7X0	CBF-CAZ	-2.36	1.51	1.54
3	E	202	7X0	OAM-CAZ	2.24	1.24	1.21
3	F	202	7X0	CAS-CBH	-2.23	1.50	1.54
3	F	202	7X0	OAL-CAY	2.23	1.25	1.21
3	A	203	7X0	OAQ-CAW	2.20	1.25	1.21
3	B	202	7X0	OAT-CAA	2.17	1.50	1.45
3	B	202	7X0	OAQ-CAW	2.16	1.24	1.21
3	B	202	7X0	OAK-CAX	2.16	1.25	1.20
3	E	202	7X0	OAK-CAX	2.16	1.25	1.20
3	A	203	7X0	CBI-CBB	2.15	1.60	1.56
3	C	202	7X0	OAQ-CAW	2.15	1.24	1.21
3	E	202	7X0	OAL-CAY	2.15	1.25	1.21
3	D	202	7X0	OAQ-CAW	2.12	1.24	1.21
3	F	202	7X0	OAK-CAX	2.11	1.25	1.20
3	E	202	7X0	CAH-CBI	2.11	1.57	1.54
3	D	202	7X0	OAP-CBD	2.02	1.46	1.42
3	F	202	7X0	OAQ-CAW	2.00	1.24	1.21

All (50) bond angle outliers are listed below:

Continued on next page...

Continued from previous page...

Mol	Chain	Res	Type	Atoms	Z	Observed(°)	Ideal(°)
-----	-------	-----	------	-------	---	-------------	----------

Mol	Chain	Res	Type	Atoms	Z	Observed(°)	Ideal(°)
3	D	202	7X0	CAA-OAT-CAX	-8.87	100.98	115.94
3	F	202	7X0	CAA-OAT-CAX	-7.32	103.59	115.94
3	E	202	7X0	CAR-CAS-CBH	-5.73	106.12	113.47
3	E	202	7X0	OAM-CAZ-CBD	-5.66	109.47	119.07
3	E	202	7X0	CAB-CAV-CAQ	-4.61	111.26	121.54
3	A	203	7X0	CAB-CAV-CAQ	-4.39	111.76	121.54
3	F	202	7X0	OAM-CAZ-CBD	-4.28	111.80	119.07
3	F	202	7X0	OAT-CAX-CBD	4.14	118.03	111.98
3	D	202	7X0	CAR-CAS-CBH	-4.08	108.24	113.47
3	F	202	7X0	CAR-CAS-CBH	-4.01	108.33	113.47
3	C	202	7X0	OAO-CBA-CAY	-3.98	102.97	110.28
3	D	202	7X0	OAM-CAZ-CBD	-3.93	112.41	119.07
3	D	202	7X0	CAB-CAV-CAQ	-3.76	113.17	121.54
3	C	202	7X0	CAR-CAS-CBH	-3.72	108.70	113.47
3	E	202	7X0	OAO-CBA-CAY	-3.49	103.87	110.28
3	C	202	7X0	CAB-CAV-CAQ	-3.23	114.33	121.54
3	F	202	7X0	OAT-CAX-OAK	-3.19	118.34	123.93
3	A	203	7X0	CAB-CAV-CBF	3.06	123.27	117.97
3	F	202	7X0	CAB-CAV-CAQ	-3.05	114.75	121.54
3	B	202	7X0	OAT-CAX-CBD	2.97	116.32	111.98
3	A	203	7X0	CAR-CAS-CBH	-2.94	109.70	113.47
3	A	203	7X0	CAH-CBI-CBA	2.87	112.74	108.01
3	E	202	7X0	CAA-OAT-CAX	2.84	120.72	115.94
3	B	202	7X0	OAM-CAZ-CBD	-2.69	114.50	119.07
3	D	202	7X0	CAH-CBI-CBA	2.62	112.32	108.01
3	A	203	7X0	CAS-CBH-CBG	-2.61	104.85	108.09
3	C	202	7X0	OAT-CAX-CBD	2.60	115.78	111.98
3	E	202	7X0	CAH-CBI-CBB	2.58	116.44	110.57
3	E	202	7X0	OAM-CAZ-CBF	2.58	122.07	119.30
3	B	202	7X0	CAB-CAV-CAQ	-2.56	115.83	121.54
3	E	202	7X0	CAG-CBH-CAS	-2.56	104.14	108.26
3	E	202	7X0	CAB-CAV-CBF	2.54	122.36	117.97
3	C	202	7X0	CAS-CBH-CBG	-2.53	104.96	108.09
3	A	203	7X0	OAO-CBA-CBI	2.53	115.82	112.34
3	F	202	7X0	OAP-CBD-CAE	-2.47	103.60	108.83
3	C	202	7X0	CAF-CBF-CBB	2.46	119.61	112.91
3	C	202	7X0	OAM-CAZ-CBD	-2.46	114.89	119.07
3	C	202	7X0	OAO-CBA-CBI	2.44	115.71	112.34
3	B	202	7X0	CAH-CBI-CBA	2.39	111.96	108.01
3	C	202	7X0	OAT-CAX-OAK	-2.39	119.74	123.93
3	C	202	7X0	CAG-CBH-CBG	2.36	117.03	112.41

Continued on next page...

Continued from previous page...

Mol	Chain	Res	Type	Atoms	Z	Observed(°)	Ideal(°)
3	F	202	7X0	OA0-CBA-CBI	2.35	115.58	112.34
3	C	202	7X0	CAA-OAT-CAX	-2.32	112.02	115.94
3	F	202	7X0	CAS-CBH-CBG	-2.31	105.22	108.09
3	B	202	7X0	CAG-CBH-CBG	2.26	116.83	112.41
3	C	202	7X0	CAH-CBI-CBB	2.19	115.56	110.57
3	C	202	7X0	CBB-CBF-CAZ	-2.19	101.14	110.29
3	E	202	7X0	CAG-CBH-CBE	2.12	115.10	111.69
3	A	203	7X0	OAP-CBD-CAE	-2.10	104.38	108.83
3	A	203	7X0	OAL-CAY-CBA	2.10	122.40	120.14

There are no chirality outliers.

All (41) torsion outliers are listed below:

Mol	Chain	Res	Type	Atoms
3	A	203	7X0	CBD-CAZ-CBF-CAV
3	A	203	7X0	OAM-CAZ-CBD-OAP
3	A	203	7X0	OAM-CAZ-CBD-CAX
3	A	203	7X0	CBD-CAX-OAT-CAA
3	B	202	7X0	CBD-CAZ-CBF-CAV
3	B	202	7X0	CBD-CAX-OAT-CAA
3	D	202	7X0	CBD-CAZ-CBF-CAV
3	D	202	7X0	CBD-CAX-OAT-CAA
3	C	202	7X0	CBD-CAX-OAT-CAA
3	F	202	7X0	OAK-CAX-CBD-CAZ
3	F	202	7X0	OAT-CAX-CBD-CAZ
3	F	202	7X0	CBD-CAX-OAT-CAA
3	A	203	7X0	OAK-CAX-OAT-CAA
3	B	202	7X0	OAK-CAX-OAT-CAA
3	C	202	7X0	OAK-CAX-OAT-CAA
3	D	202	7X0	OAK-CAX-OAT-CAA
3	F	202	7X0	OAK-CAX-OAT-CAA
3	B	202	7X0	OAM-CAZ-CBF-CBB
3	B	202	7X0	OAK-CAX-CBD-OAP
3	D	202	7X0	OAK-CAX-CBD-OAP
3	C	202	7X0	OAK-CAX-CBD-OAP
3	D	202	7X0	OAT-CAX-CBD-OAP
3	F	202	7X0	OAT-CAX-CBD-OAP
3	D	202	7X0	OAT-CAX-CBD-CAE
3	C	202	7X0	OAM-CAZ-CBD-CAX
3	A	203	7X0	OAM-CAZ-CBF-CAV
3	B	202	7X0	OAM-CAZ-CBF-CAV
3	D	202	7X0	OAM-CAZ-CBF-CAV

Continued on next page...

Continued from previous page...

Mol	Chain	Res	Type	Atoms
3	A	203	7X0	OAT-CAX-CBD-CAZ
3	B	202	7X0	OAK-CAX-CBD-CAZ
3	D	202	7X0	OAM-CAZ-CBF-CBB
3	F	202	7X0	CBD-CAZ-CBF-CAV
3	C	202	7X0	OAT-CAX-CBD-OAP
3	E	202	7X0	OAT-CAX-CBD-OAP
3	A	203	7X0	OAM-CAZ-CBF-CBB
3	F	202	7X0	OAM-CAZ-CBF-CBB
3	C	202	7X0	OAT-CAX-CBD-CAE
3	F	202	7X0	OAK-CAX-CBD-CAE
3	B	202	7X0	OAM-CAZ-CBD-OAP
3	E	202	7X0	OAM-CAZ-CBD-OAP
3	F	202	7X0	OAM-CAZ-CBF-CAV

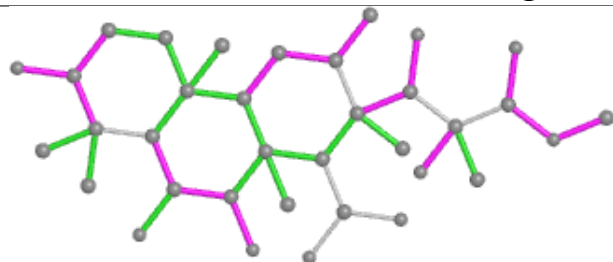
There are no ring outliers.

5 monomers are involved in 12 short contacts:

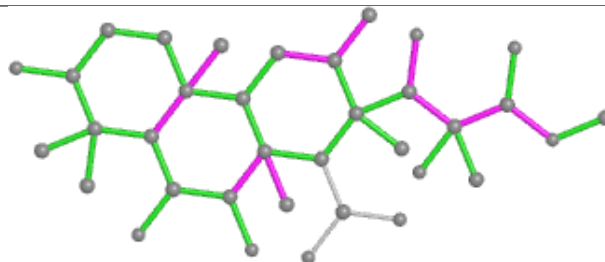
Mol	Chain	Res	Type	Clashes	Symm-Clashes
3	B	202	7X0	2	0
3	A	203	7X0	3	0
3	C	202	7X0	4	0
3	E	202	7X0	1	0
3	D	202	7X0	2	0

The following is a two-dimensional graphical depiction of Mogul quality analysis of bond lengths, bond angles, torsion angles, and ring geometry for all instances of the Ligand of Interest. In addition, ligands with molecular weight > 250 and outliers as shown on the validation Tables will also be included. For torsion angles, if less than 5% of the Mogul distribution of torsion angles is within 10 degrees of the torsion angle in question, then that torsion angle is considered an outlier. Any bond that is central to one or more torsion angles identified as an outlier by Mogul will be highlighted in the graph. For rings, the root-mean-square deviation (RMSD) between the ring in question and similar rings identified by Mogul is calculated over all ring torsion angles. If the average RMSD is greater than 60 degrees and the minimal RMSD between the ring in question and any Mogul-identified rings is also greater than 60 degrees, then that ring is considered an outlier. The outliers are highlighted in purple. The color gray indicates Mogul did not find sufficient equivalents in the CSD to analyse the geometry.

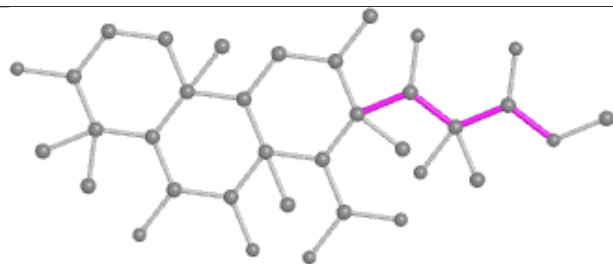
Ligand 7X0 B 202



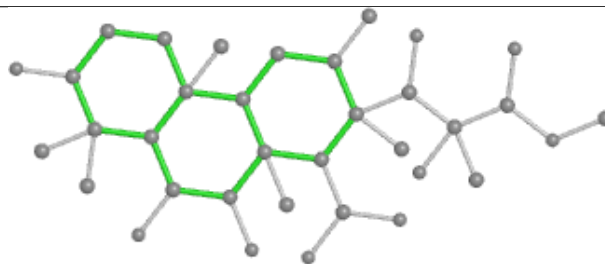
Bond lengths



Bond angles

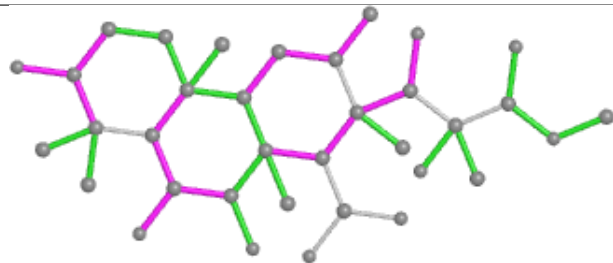


Torsions

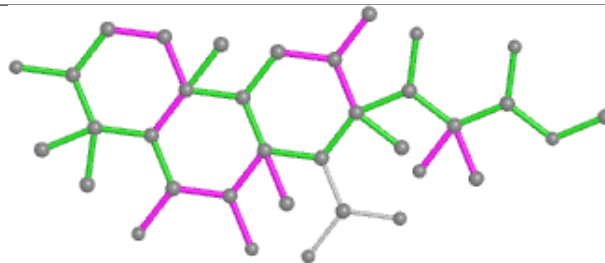


Rings

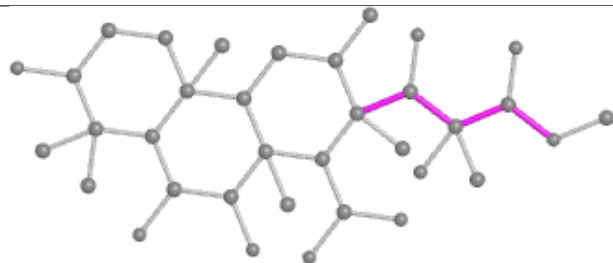
Ligand 7X0 A 203



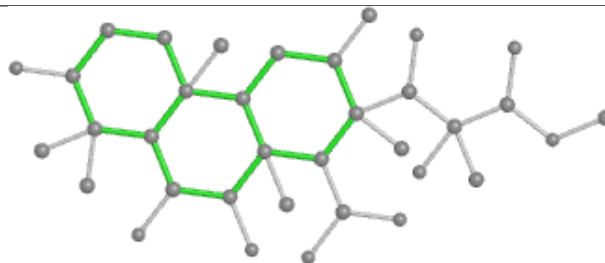
Bond lengths



Bond angles

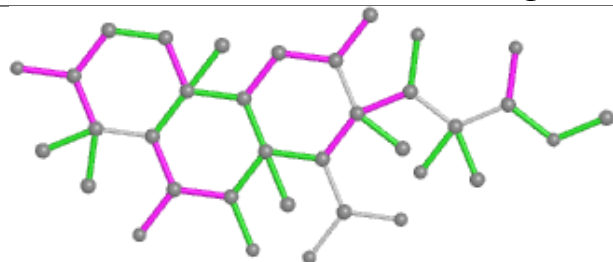


Torsions

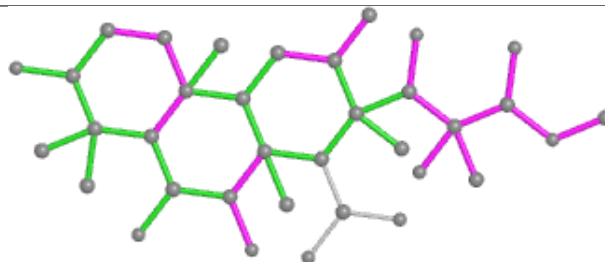


Rings

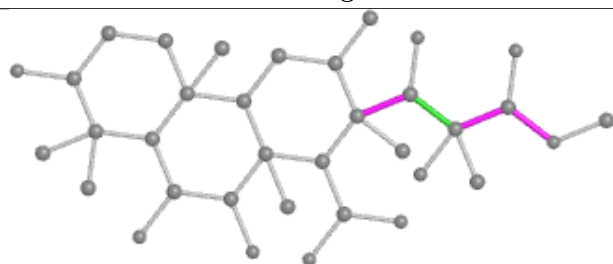
Ligand 7X0 F 202



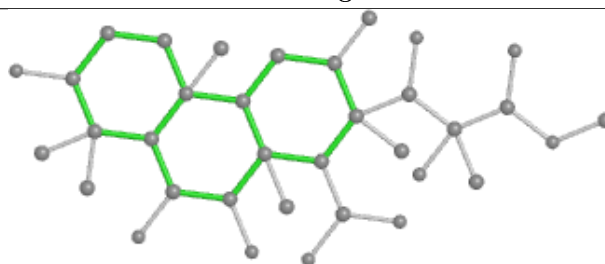
Bond lengths



Bond angles

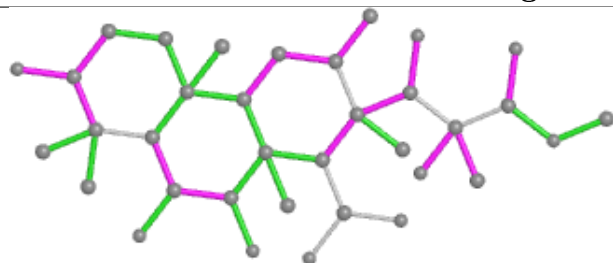


Torsions

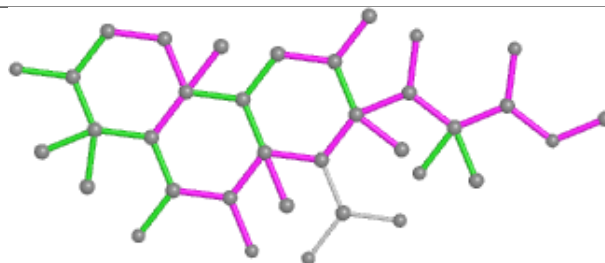


Rings

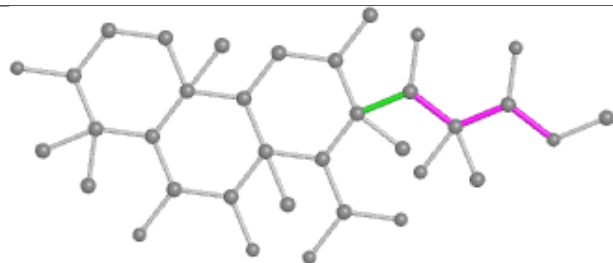
Ligand 7X0 C 202



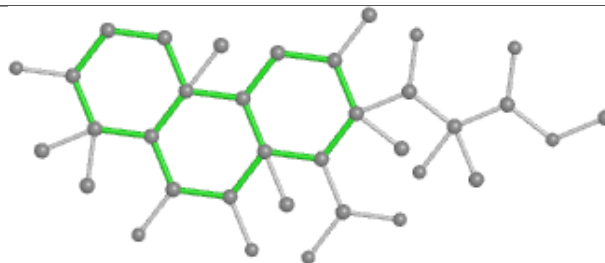
Bond lengths



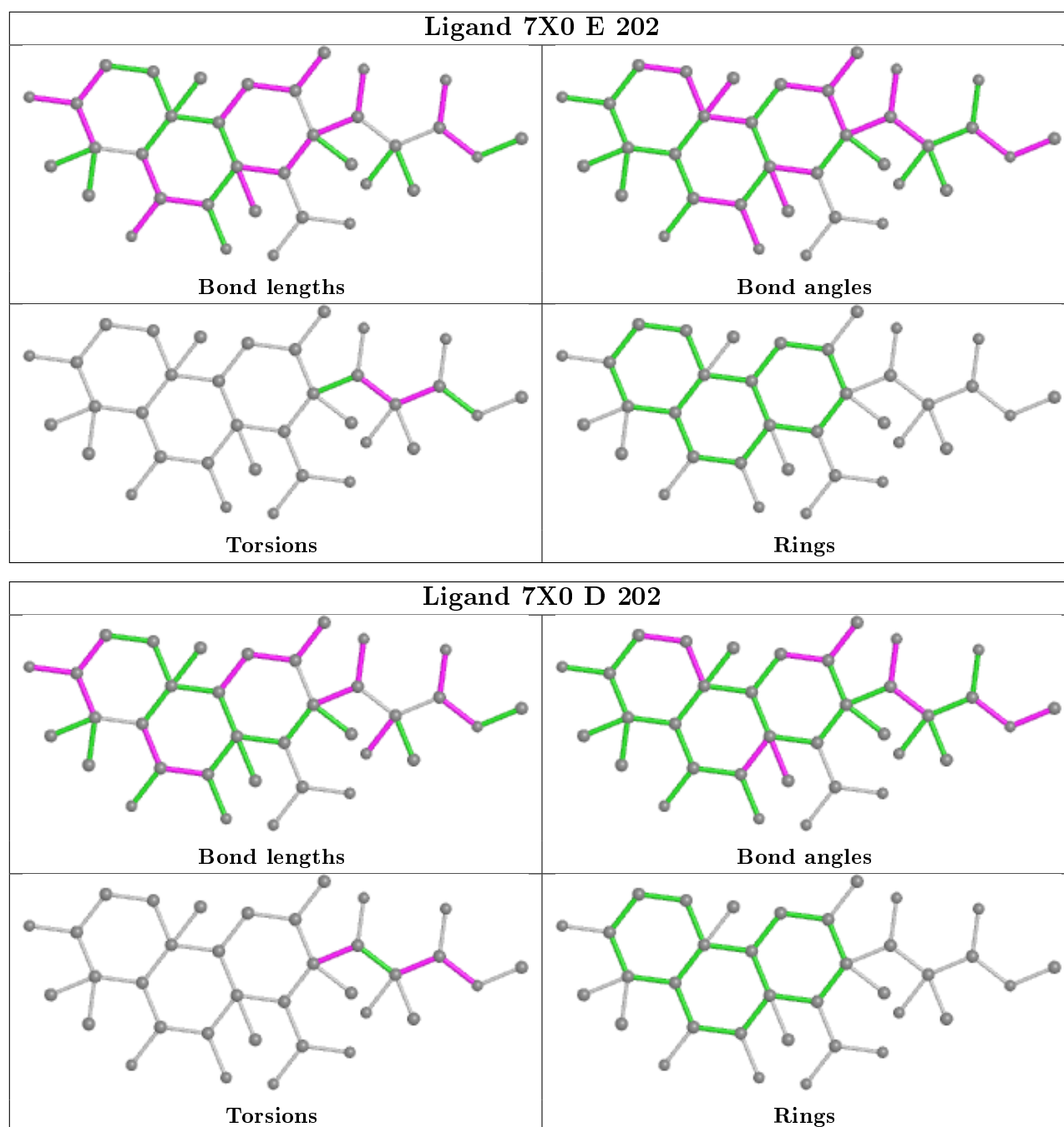
Bond angles



Torsions



Rings



5.7 Other polymers [i](#)

There are no such residues in this entry.

5.8 Polymer linkage issues [i](#)

There are no chain breaks in this entry.

6 Fit of model and data [i](#)

6.1 Protein, DNA and RNA chains [i](#)

In the following table, the column labelled ‘#RSRZ> 2’ contains the number (and percentage) of RSRZ outliers, followed by percent RSRZ outliers for the chain as percentile scores relative to all X-ray entries and entries of similar resolution. The OWAB column contains the minimum, median, 95th percentile and maximum values of the occupancy-weighted average B-factor per residue. The column labelled ‘Q< 0.9’ lists the number of (and percentage) of residues with an average occupancy less than 0.9.

Mol	Chain	Analysed	<RSRZ>	#RSRZ>2	OWAB(Å ²)	Q<0.9
1	A	140/162 (86%)	-0.13	0 100 100	14, 22, 33, 40	0
1	B	140/162 (86%)	-0.06	0 100 100	14, 22, 33, 41	0
1	C	140/162 (86%)	-0.03	2 (1%) 75 77	17, 29, 43, 55	0
1	D	140/162 (86%)	-0.24	1 (0%) 87 88	17, 27, 38, 50	0
1	E	140/162 (86%)	0.14	3 (2%) 63 66	19, 34, 46, 55	0
1	F	139/162 (85%)	-0.14	0 100 100	19, 30, 43, 52	0
All	All	839/972 (86%)	-0.08	6 (0%) 87 88	14, 27, 41, 55	0

All (6) RSRZ outliers are listed below:

Mol	Chain	Res	Type	RSRZ
1	C	141	THR	4.2
1	E	142	PHE	4.2
1	C	142	PHE	3.6
1	E	25	GLU	3.0
1	E	137	LEU	2.4
1	D	141	THR	2.4

6.2 Non-standard residues in protein, DNA, RNA chains [i](#)

There are no non-standard protein/DNA/RNA residues in this entry.

6.3 Carbohydrates [i](#)

There are no carbohydrates in this entry.

6.4 Ligands

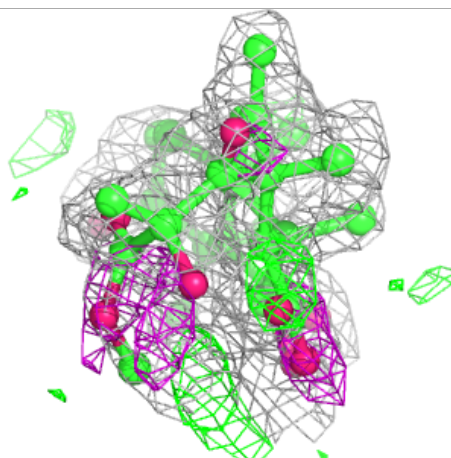
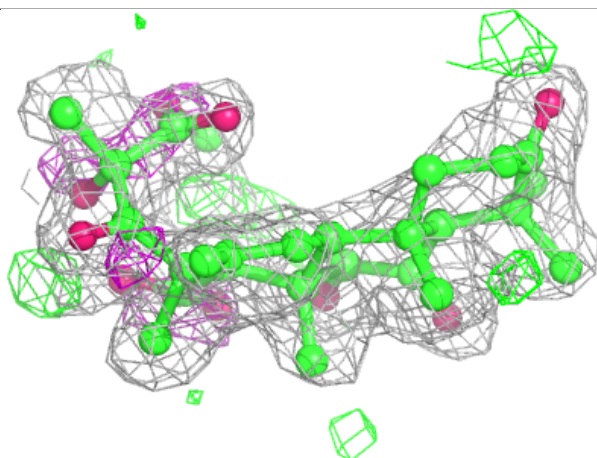
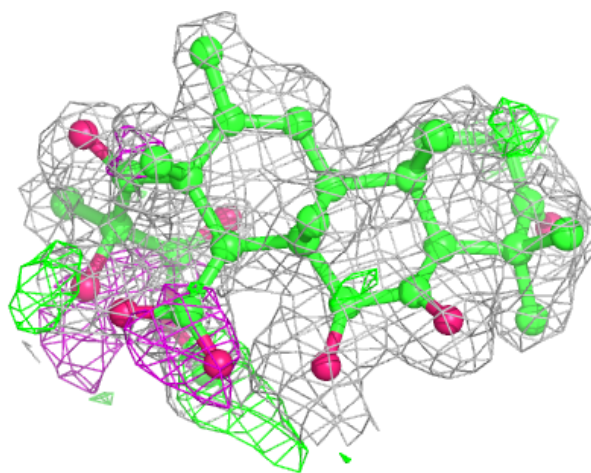
In the following table, the Atoms column lists the number of modelled atoms in the group and the number defined in the chemical component dictionary. The B-factors column lists the minimum, median, 95th percentile and maximum values of B factors of atoms in the group. The column labelled 'Q< 0.9' lists the number of atoms with occupancy less than 0.9.

Mol	Type	Chain	Res	Atoms	RSCC	RSR	B-factors(Å ²)	Q<0.9
3	7X0	A	203	35/35	0.73	0.21	31,42,51,55	0
3	7X0	E	202	35/35	0.74	0.22	32,45,55,57	0
3	7X0	C	202	35/35	0.80	0.19	31,44,53,55	0
3	7X0	B	202	35/35	0.81	0.16	24,33,47,50	0
3	7X0	F	202	35/35	0.82	0.18	26,37,52,60	0
3	7X0	D	202	35/35	0.83	0.17	27,37,50,52	0
2	CA	B	201	1/1	0.86	0.36	88,88,88,88	0
2	CA	E	201	1/1	0.92	0.06	42,42,42,42	0
2	CA	D	201	1/1	0.95	0.08	44,44,44,44	0
2	CA	F	201	1/1	0.95	0.06	34,34,34,34	0
2	CA	C	201	1/1	0.95	0.09	45,45,45,45	0
2	CA	A	202	1/1	0.98	0.07	32,32,32,32	0
2	CA	A	201	1/1	0.98	0.05	32,32,32,32	0

The following is a graphical depiction of the model fit to experimental electron density of all instances of the Ligand of Interest. In addition, ligands with molecular weight > 250 and outliers as shown on the geometry validation Tables will also be included. Each fit is shown from different orientation to approximate a three-dimensional view.

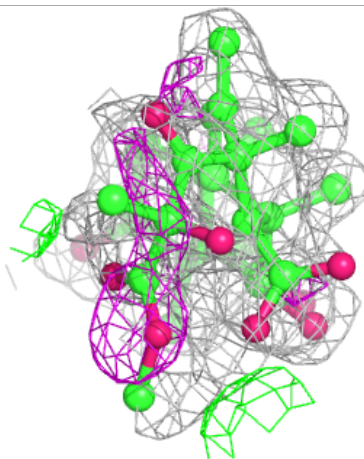
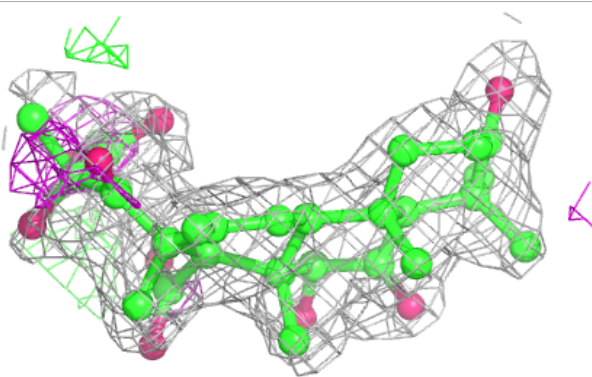
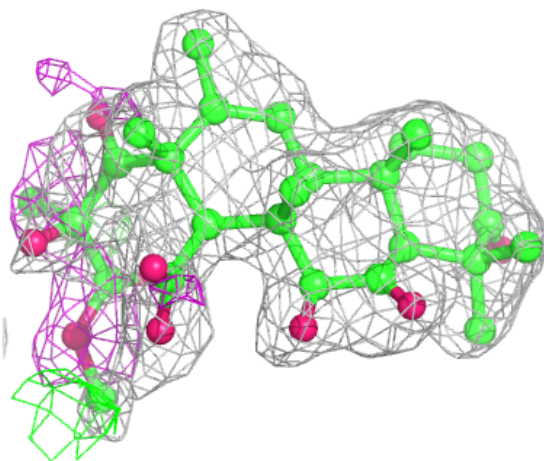
Electron density around 7X0 A 203:

$2mF_o-DF_c$ (at 0.7 rmsd) in gray
 mF_o-DF_c (at 3 rmsd) in purple (negative)
and green (positive)



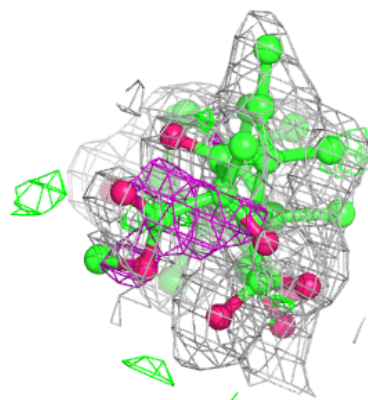
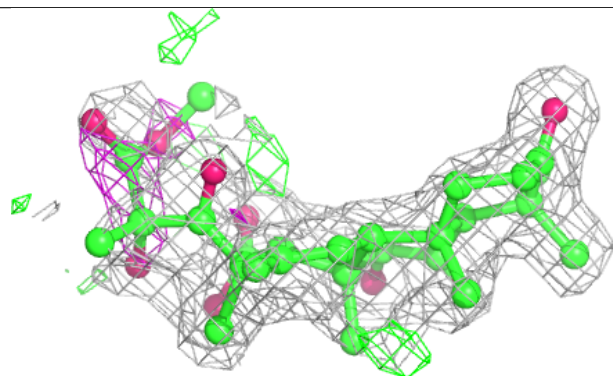
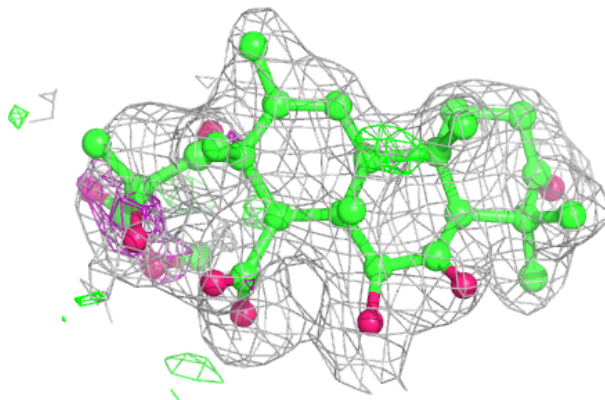
Electron density around 7X0 E 202:

$2mF_o-DF_c$ (at 0.7 rmsd) in gray
 mF_o-DF_c (at 3 rmsd) in purple (negative)
and green (positive)



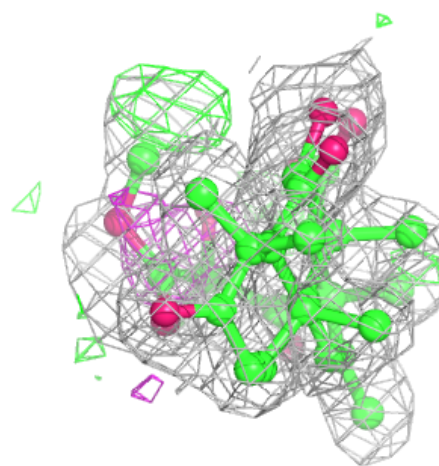
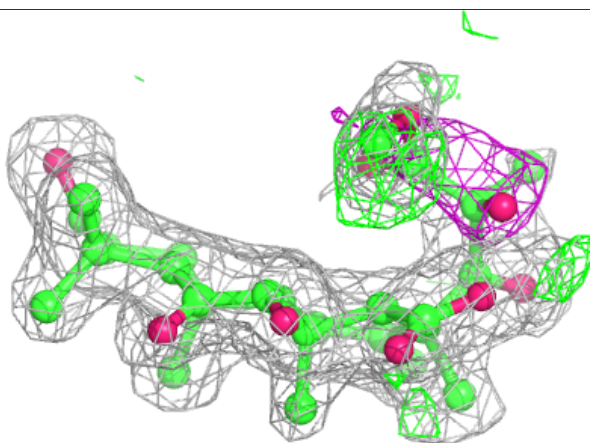
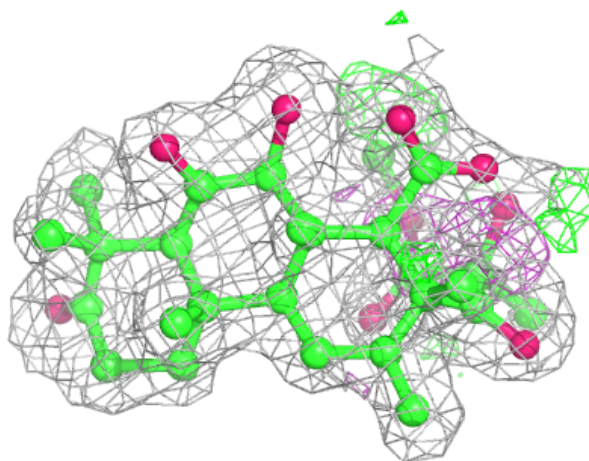
Electron density around 7X0 C 202:

$2mF_o-DF_c$ (at 0.7 rmsd) in gray
 mF_o-DF_c (at 3 rmsd) in purple (negative)
and green (positive)



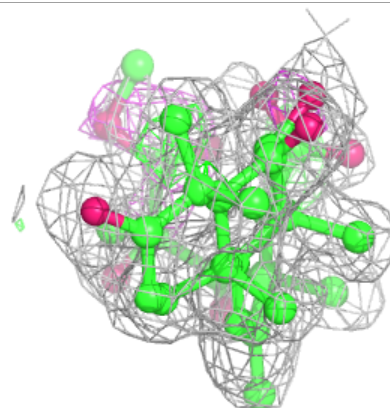
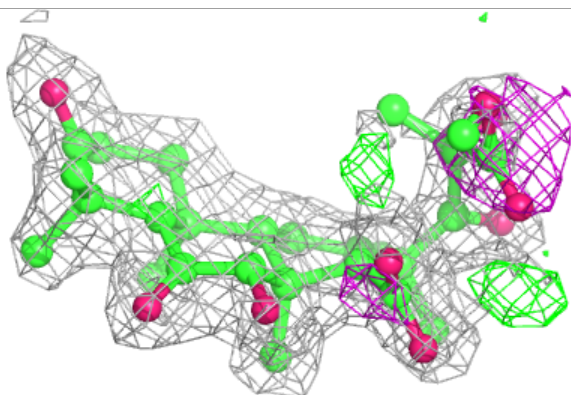
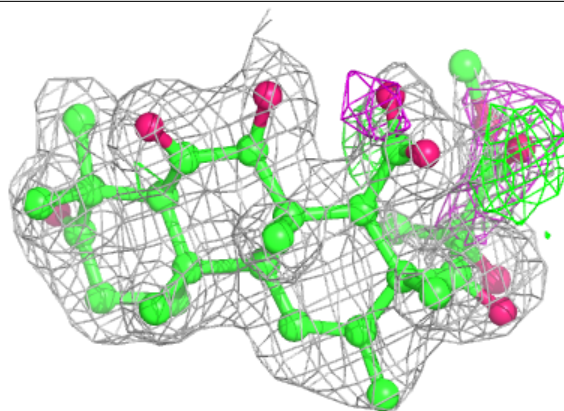
Electron density around 7X0 B 202:

$2mF_o-DF_c$ (at 0.7 rmsd) in gray
 mF_o-DF_c (at 3 rmsd) in purple (negative)
and green (positive)



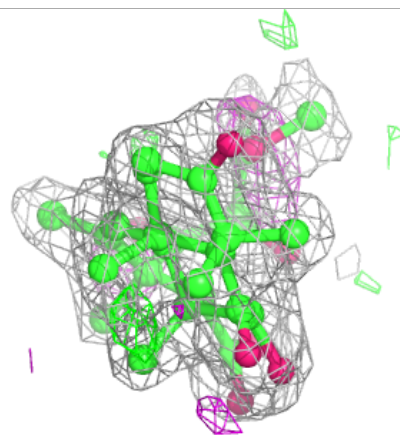
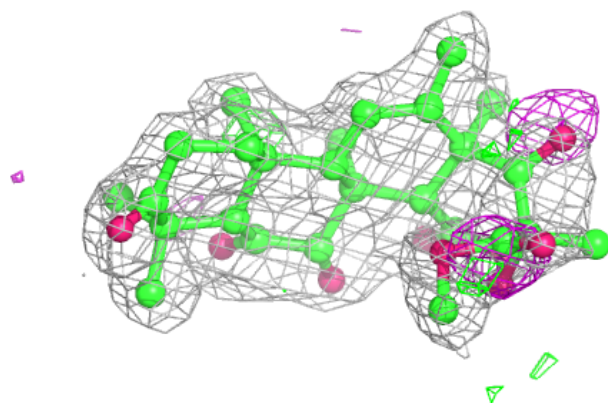
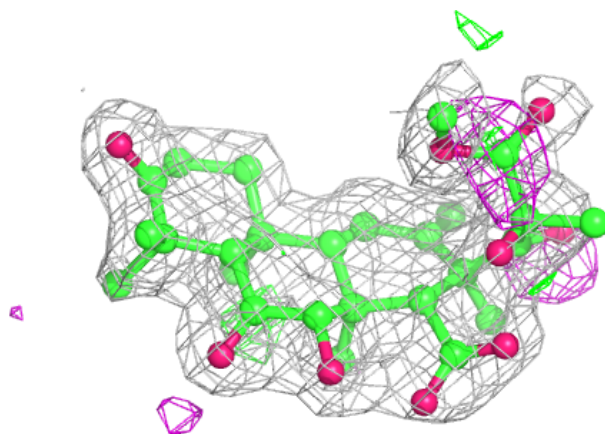
Electron density around 7X0 F 202:

$2mF_o-DF_c$ (at 0.7 rmsd) in gray
 mF_o-DF_c (at 3 rmsd) in purple (negative)
and green (positive)



Electron density around 7X0 D 202:

$2mF_o-DF_c$ (at 0.7 rmsd) in gray
 mF_o-DF_c (at 3 rmsd) in purple (negative)
and green (positive)



6.5 Other polymers [\(i\)](#)

There are no such residues in this entry.