



# Full wwPDB X-ray Structure Validation Report ⓘ

Aug 22, 2020 – 01:39 AM BST

PDB ID : 6WQ3  
Title : Crystal Structure of Nsp16-Nsp10 Heterodimer from SARS-CoV-2 in Complex with 7-methyl-GpppA and S-adenosyl-L-homocysteine.  
Authors : Minasov, G.; Shuvalova, L.; Rosas-Lemus, M.; Brunzelle, J.S.; Kiryukhina, O.; Satchell, K.J.F.; Center for Structural Genomics of Infectious Diseases (CSGID)  
Deposited on : 2020-04-28  
Resolution : 2.10 Å(reported)

This is a Full wwPDB X-ray Structure Validation Report for a publicly released PDB entry.

We welcome your comments at [validation@mail.wwpdb.org](mailto:validation@mail.wwpdb.org)

A user guide is available at

<https://www.wwpdb.org/validation/2017/XrayValidationReportHelp>

with specific help available everywhere you see the ⓘ symbol.

---

The following versions of software and data (see [references ⓘ](#)) were used in the production of this report:

MolProbity : 4.02b-467  
Mogul : 1.8.5 (274361), CSD as541be (2020)  
Xtriage (Phenix) : 1.13  
EDS : 2.13.1  
buster-report : 1.1.7 (2018)  
Percentile statistics : 20191225.v01 (using entries in the PDB archive December 25th 2019)  
Refmac : 5.8.0158  
CCP4 : 7.0.044 (Gargrove)  
Ideal geometry (proteins) : Engh & Huber (2001)  
Ideal geometry (DNA, RNA) : Parkinson et al. (1996)  
Validation Pipeline (wwPDB-VP) : 2.13.1

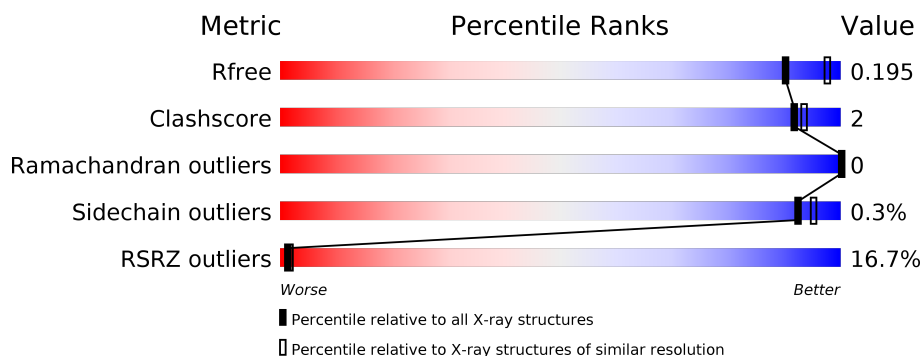
# 1 Overall quality at a glance

The following experimental techniques were used to determine the structure:

*X-RAY DIFFRACTION*

The reported resolution of this entry is 2.10 Å.

Percentile scores (ranging between 0-100) for global validation metrics of the entry are shown in the following graphic. The table shows the number of entries on which the scores are based.



Metric	Whole archive (#Entries)	Similar resolution (#Entries, resolution range(Å))
$R_{free}$	130704	5197 (2.10-2.10)
Clashscore	141614	5710 (2.10-2.10)
Ramachandran outliers	138981	5647 (2.10-2.10)
Sidechain outliers	138945	5648 (2.10-2.10)
RSRZ outliers	127900	5083 (2.10-2.10)

The table below summarises the geometric issues observed across the polymeric chains and their fit to the electron density. The red, orange, yellow and green segments on the lower bar indicate the fraction of residues that contain outliers for  $\geq 3$ , 2, 1 and 0 types of geometric quality criteria respectively. A grey segment represents the fraction of residues that are not modelled. The numeric value for each fraction is indicated below the corresponding segment, with a dot representing fractions  $\leq 5\%$ . The upper red bar (where present) indicates the fraction of residues that have poor fit to the electron density. The numeric value is given above the bar.

Mol	Chain	Length	Quality of chain
1	A	301	<div> <div>13%</div> <div>96%</div> <div>..</div> </div>
2	B	142	<div> <div>23%</div> <div>77%</div> <div>7%</div> <div>16%</div> </div>

## 2 Entry composition

There are 8 unique types of molecules in this entry. The entry contains 3708 atoms, of which 0 are hydrogens and 0 are deuteriums.

In the tables below, the ZeroOcc column contains the number of atoms modelled with zero occupancy, the AltConf column contains the number of residues with at least one atom in alternate conformation and the Trace column contains the number of residues modelled with at most 2 atoms.

- Molecule 1 is a protein called 2'-O-methyltransferase.

Mol	Chain	Residues	Atoms					ZeroOcc	AltConf	Trace
1	A	299	Total	C	N	O	S	0	8	0
			2415	1538	407	453	17			

There are 3 discrepancies between the modelled and reference sequences:

Chain	Residue	Modelled	Actual	Comment	Reference
A	6796	SER	-	expression tag	UNP P0DTD1
A	6797	ASN	-	expression tag	UNP P0DTD1
A	6798	ALA	-	expression tag	UNP P0DTD1

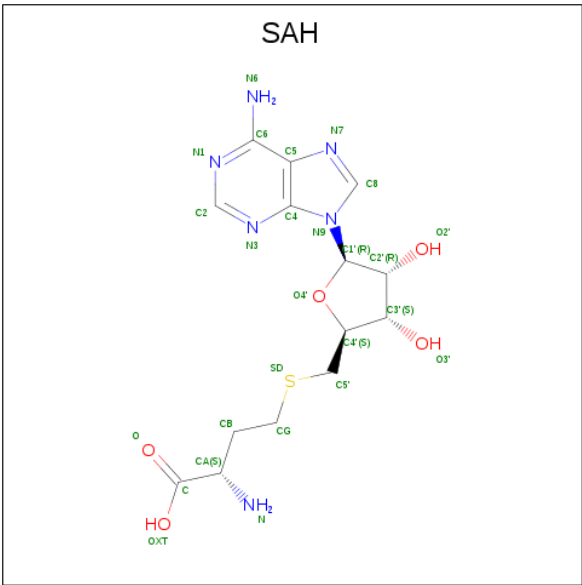
- Molecule 2 is a protein called Non-structural protein 10.

Mol	Chain	Residues	Atoms					ZeroOcc	AltConf	Trace
2	B	119	Total	C	N	O	S	0	1	0
			884	548	148	172	16			

There are 3 discrepancies between the modelled and reference sequences:

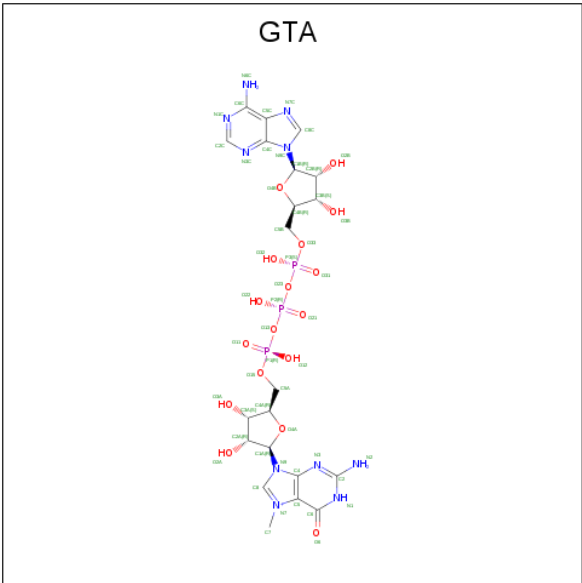
Chain	Residue	Modelled	Actual	Comment	Reference
B	4251	SER	-	expression tag	UNP P0DTD1
B	4252	ASN	-	expression tag	UNP P0DTD1
B	4253	ALA	-	expression tag	UNP P0DTD1

- Molecule 3 is S-ADENOSYL-L-HOMOCYSTEINE (three-letter code: SAH) (formula: C<sub>14</sub>H<sub>20</sub>N<sub>6</sub>O<sub>5</sub>S) (labeled as "Ligand of Interest" by author).



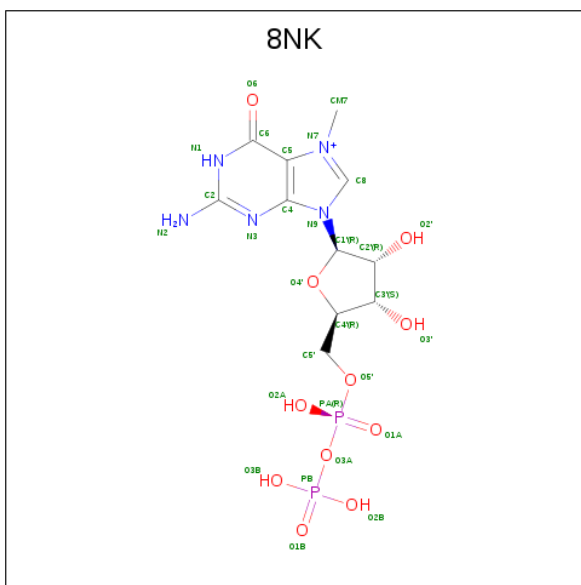
Mol	Chain	Residues	Atoms					ZeroOcc	AltConf
3	A	1	Total	C	N	O	S	0	0
			26	14	6	5	1		

- Molecule 4 is P1-7-METHYLGUANOSINE-P3-ADENOSINE-5',5'-TRIPHOSPHAT E (three-letter code: GTA) (formula: C<sub>21</sub>H<sub>30</sub>N<sub>10</sub>O<sub>17</sub>P<sub>3</sub>) (labeled as "Ligand of Interest" by author).



Mol	Chain	Residues	Atoms					ZeroOcc	AltConf
4	A	1	Total	C	N	O	P	0	0
			51	21	10	17	3		

- Molecule 5 is 7-methylguanosine 5'-diphosphate (three-letter code: 8NK) (formula: C<sub>11</sub>H<sub>18</sub>N<sub>5</sub>O<sub>11</sub>P<sub>2</sub>).



Mol	Chain	Residues	Atoms					ZeroOcc	AltConf
5	A	1	Total	C	N	O	P	0	0
			29	11	5	11	2		

- Molecule 6 is SULFATE ION (three-letter code: SO4) (formula: O<sub>4</sub>S).



Mol	Chain	Residues	Atoms			ZeroOcc	AltConf
6	A	1	Total 5	O 4	S 1	0	0
6	A	1	Total 5	O 4	S 1	0	0
6	A	1	Total 5	O 4	S 1	0	0

*Continued on next page...*

*Continued from previous page...*

Mol	Chain	Residues	Atoms			ZeroOcc	AltConf
6	A	1	Total	O	S	0	1
			5	4	1		
6	A	1	Total	O	S	0	0
			5	4	1		
6	A	1	Total	O	S	0	1
			10	8	2		
6	B	1	Total	O	S	0	0
			5	4	1		
6	B	1	Total	O	S	0	0
			5	4	1		

- Molecule 7 is ZINC ION (three-letter code: ZN) (formula: Zn) (labeled as "Ligand of Interest" by author).

Mol	Chain	Residues	Atoms		ZeroOcc	AltConf
7	B	2	Total	Zn	0	0
			2	2		

- Molecule 8 is water.

Mol	Chain	Residues	Atoms		ZeroOcc	AltConf
8	A	212	Total	O	0	16
			220	220		
8	B	33	Total	O	0	3
			36	36		



## 4 Data and refinement statistics

Property	Value	Source
Space group	P 31 2 1	Depositor
Cell constants a, b, c, $\alpha$ , $\beta$ , $\gamma$	169.65Å 169.65Å 52.05Å 90.00° 90.00° 120.00°	Depositor
Resolution (Å)	28.31 – 2.10 28.29 – 2.10	Depositor EDS
% Data completeness (in resolution range)	98.8 (28.31-2.10) 98.9 (28.29-2.10)	Depositor EDS
$R_{merge}$	0.07	Depositor
$R_{sym}$	0.07	Depositor
$\langle I/\sigma(I) \rangle$ <sup>1</sup>	2.95 (at 2.10Å)	Xtriage
Refinement program	REFMAC 5.8.0258	Depositor
R, $R_{free}$	0.166 , 0.186 0.173 , 0.195	Depositor DCC
$R_{free}$ test set	2513 reflections (5.06%)	wwPDB-VP
Wilson B-factor (Å <sup>2</sup> )	45.4	Xtriage
Anisotropy	0.150	Xtriage
Bulk solvent $k_{sol}$ (e/Å <sup>3</sup> ), $B_{sol}$ (Å <sup>2</sup> )	0.34 , 55.6	EDS
L-test for twinning <sup>2</sup>	$\langle  L  \rangle = 0.48$ , $\langle L^2 \rangle = 0.31$	Xtriage
Estimated twinning fraction	0.034 for -h,-k,l	Xtriage
$F_o, F_c$ correlation	0.97	EDS
Total number of atoms	3708	wwPDB-VP
Average B, all atoms (Å <sup>2</sup> )	58.0	wwPDB-VP

Xtriage's analysis on translational NCS is as follows: *The largest off-origin peak in the Patterson function is 3.55% of the height of the origin peak. No significant pseudotranslation is detected.*

<sup>1</sup>Intensities estimated from amplitudes.

<sup>2</sup>Theoretical values of  $\langle |L| \rangle$ ,  $\langle L^2 \rangle$  for acentric reflections are 0.5, 0.333 respectively for untwinned datasets, and 0.375, 0.2 for perfectly twinned datasets.



## 5 Model quality

### 5.1 Standard geometry

Bond lengths and bond angles in the following residue types are not validated in this section: GTA, ZN, SAH, SO4, 8NK

The Z score for a bond length (or angle) is the number of standard deviations the observed value is removed from the expected value. A bond length (or angle) with  $|Z| > 5$  is considered an outlier worth inspection. RMSZ is the root-mean-square of all Z scores of the bond lengths (or angles).

Mol	Chain	Bond lengths		Bond angles	
		RMSZ	$\# Z  > 5$	RMSZ	$\# Z  > 5$
1	A	0.64	0/2467	0.74	0/3345
2	B	0.72	0/902	0.72	0/1222
All	All	0.66	0/3369	0.73	0/4567

There are no bond length outliers.

There are no bond angle outliers.

There are no chirality outliers.

There are no planarity outliers.

### 5.2 Too-close contacts

In the following table, the Non-H and H(model) columns list the number of non-hydrogen atoms and hydrogen atoms in the chain respectively. The H(added) column lists the number of hydrogen atoms added and optimized by MolProbity. The Clashes column lists the number of clashes within the asymmetric unit, whereas Symm-Clashes lists symmetry related clashes.

Mol	Chain	Non-H	H(model)	H(added)	Clashes	Symm-Clashes
1	A	2415	0	2392	6	0
2	B	884	0	840	6	0
3	A	26	0	19	0	0
4	A	51	0	27	0	0
5	A	29	0	0	0	0
6	A	35	0	0	0	0
6	B	10	0	0	0	0
7	B	2	0	0	0	0
8	A	220	0	0	0	0
8	B	36	0	0	0	0
All	All	3708	0	3278	11	0

The all-atom clashscore is defined as the number of clashes found per 1000 atoms (including hydrogen atoms). The all-atom clashscore for this structure is 2.

All (11) close contacts within the same asymmetric unit are listed below, sorted by their clash magnitude.

Atom-1	Atom-2	Interatomic distance (Å)	Clash overlap (Å)
1:A:6902:VAL:HG11	2:B:4330:CYS:O	2.11	0.51
1:A:7052:LEU:HD12	1:A:7052:LEU:N	2.26	0.51
2:B:4338:ASN:ND2	2:B:4339:PRO:HD2	2.28	0.48
1:A:7039:SER:HB2	1:A:7042:LEU:HD12	1.96	0.47
2:B:4384:ASP:O	2:B:4385:GLN:HB3	2.15	0.47
1:A:6961:LEU:HB2	1:A:7080:ILE:HB	1.98	0.46
2:B:4314:ALA:HB2	2:B:4320:SER:OG	2.16	0.45
2:B:4384:ASP:O	2:B:4385:GLN:CB	2.65	0.45
1:A:6917:HIS:NE2	1:A:7091:ASP:OD2	2.51	0.44
1:A:6978:LEU:HG	1:A:7004[B]:LEU:HD23	1.98	0.44
2:B:4323:GLY:HA3	2:B:4345:LEU:O	2.20	0.41

There are no symmetry-related clashes.

## 5.3 Torsion angles [i](#)

### 5.3.1 Protein backbone [i](#)

In the following table, the Percentiles column shows the percent Ramachandran outliers of the chain as a percentile score with respect to all X-ray entries followed by that with respect to entries of similar resolution.

The Analysed column shows the number of residues for which the backbone conformation was analysed, and the total number of residues.

Mol	Chain	Analysed	Favoured	Allowed	Outliers	Percentiles	
1	A	305/301 (101%)	299 (98%)	6 (2%)	0	100	100
2	B	116/142 (82%)	112 (97%)	4 (3%)	0	100	100
All	All	421/443 (95%)	411 (98%)	10 (2%)	0	100	100

There are no Ramachandran outliers to report.

### 5.3.2 Protein sidechains [i](#)

In the following table, the Percentiles column shows the percent sidechain outliers of the chain as a percentile score with respect to all X-ray entries followed by that with respect to entries of similar

resolution.

The Analysed column shows the number of residues for which the sidechain conformation was analysed, and the total number of residues.

Mol	Chain	Analysed	Rotameric	Outliers	Percentiles	
1	A	266/260 (102%)	266 (100%)	0	100	100
2	B	100/115 (87%)	99 (99%)	1 (1%)	76	82
All	All	366/375 (98%)	365 (100%)	1 (0%)	92	95

All (1) residues with a non-rotameric sidechain are listed below:

Mol	Chain	Res	Type
2	B	4335	ASP

Some sidechains can be flipped to improve hydrogen bonding and reduce clashes. There are no such sidechains identified.

### 5.3.3 RNA ⓘ

There are no RNA molecules in this entry.

## 5.4 Non-standard residues in protein, DNA, RNA chains ⓘ

There are no non-standard protein/DNA/RNA residues in this entry.

## 5.5 Carbohydrates ⓘ

There are no monosaccharides in this entry.

## 5.6 Ligand geometry ⓘ

Of 14 ligands modelled in this entry, 2 are monoatomic - leaving 12 for Mogul analysis.

In the following table, the Counts columns list the number of bonds (or angles) for which Mogul statistics could be retrieved, the number of bonds (or angles) that are observed in the model and the number of bonds (or angles) that are defined in the Chemical Component Dictionary. The Link column lists molecule types, if any, to which the group is linked. The Z score for a bond length (or angle) is the number of standard deviations the observed value is removed from the expected value. A bond length (or angle) with  $|Z| > 2$  is considered an outlier worth inspection. RMSZ is the root-mean-square of all Z scores of the bond lengths (or angles).

Mol	Type	Chain	Res	Link	Bond lengths			Bond angles		
					Counts	RMSZ	# Z  > 2	Counts	RMSZ	# Z  > 2
6	SO4	A	7106	-	4,4,4	0.40	0	6,6,6	0.06	0
6	SO4	A	7109[B]	-	4,4,4	0.39	0	6,6,6	0.05	0
6	SO4	A	7109[A]	-	4,4,4	0.38	0	6,6,6	0.05	0
6	SO4	B	4404	-	4,4,4	0.39	0	6,6,6	0.05	0
6	SO4	A	7104	-	4,4,4	0.39	0	6,6,6	0.04	0
4	GTA	A	7102	-	46,56,56	0.80	1 (2%)	49,88,88	1.84	5 (10%)
6	SO4	A	7107[A]	-	4,4,4	0.38	0	6,6,6	0.06	0
3	SAH	A	7101	-	21,28,28	0.64	0	20,40,40	0.90	1 (5%)
6	SO4	A	7105	-	4,4,4	0.39	0	6,6,6	0.05	0
6	SO4	A	7108	-	4,4,4	0.40	0	6,6,6	0.05	0
5	8NK	A	7103	-	26,31,31	2.21	3 (11%)	31,49,49	2.23	3 (9%)
6	SO4	B	4403	-	4,4,4	0.39	0	6,6,6	0.05	0

In the following table, the Chirals column lists the number of chiral outliers, the number of chiral centers analysed, the number of these observed in the model and the number defined in the Chemical Component Dictionary. Similar counts are reported in the Torsion and Rings columns. '-' means no outliers of that kind were identified.

Mol	Type	Chain	Res	Link	Chirals	Torsions	Rings
4	GTA	A	7102	-	-	2/24/64/64	0/6/6/6
5	8NK	A	7103	-	-	8/12/32/32	0/3/3/3
3	SAH	A	7101	-	-	0/7/31/31	0/3/3/3

All (4) bond length outliers are listed below:

Mol	Chain	Res	Type	Atoms	Z	Observed(Å)	Ideal(Å)
5	A	7103	8NK	C8-N9	7.33	1.46	1.33
5	A	7103	8NK	C8-N7	7.12	1.46	1.33
5	A	7103	8NK	C6-N1	3.92	1.39	1.33
4	A	7102	GTA	C6-N1	3.32	1.38	1.33

All (9) bond angle outliers are listed below:

Mol	Chain	Res	Type	Atoms	Z	Observed(°)	Ideal(°)
5	A	7103	8NK	C5-C6-N1	-9.41	110.56	123.43
4	A	7102	GTA	C5-C6-N1	-9.30	110.71	123.43
5	A	7103	8NK	C6-N1-C2	6.34	126.00	115.93
4	A	7102	GTA	C6-N1-C2	6.14	125.69	115.93
4	A	7102	GTA	N3-C2-N1	-3.25	122.89	127.22
5	A	7103	8NK	N3-C2-N1	-3.12	123.06	127.22
3	A	7101	SAH	C5-C6-N6	2.45	124.08	120.35

Continued on next page...

*Continued from previous page...*

Mol	Chain	Res	Type	Atoms	Z	Observed(°)	Ideal(°)
4	A	7102	GTA	C5C-C6C-N6C	2.26	123.78	120.35
4	A	7102	GTA	C2-N3-C4	-2.08	112.98	115.36

There are no chirality outliers.

All (10) torsion outliers are listed below:

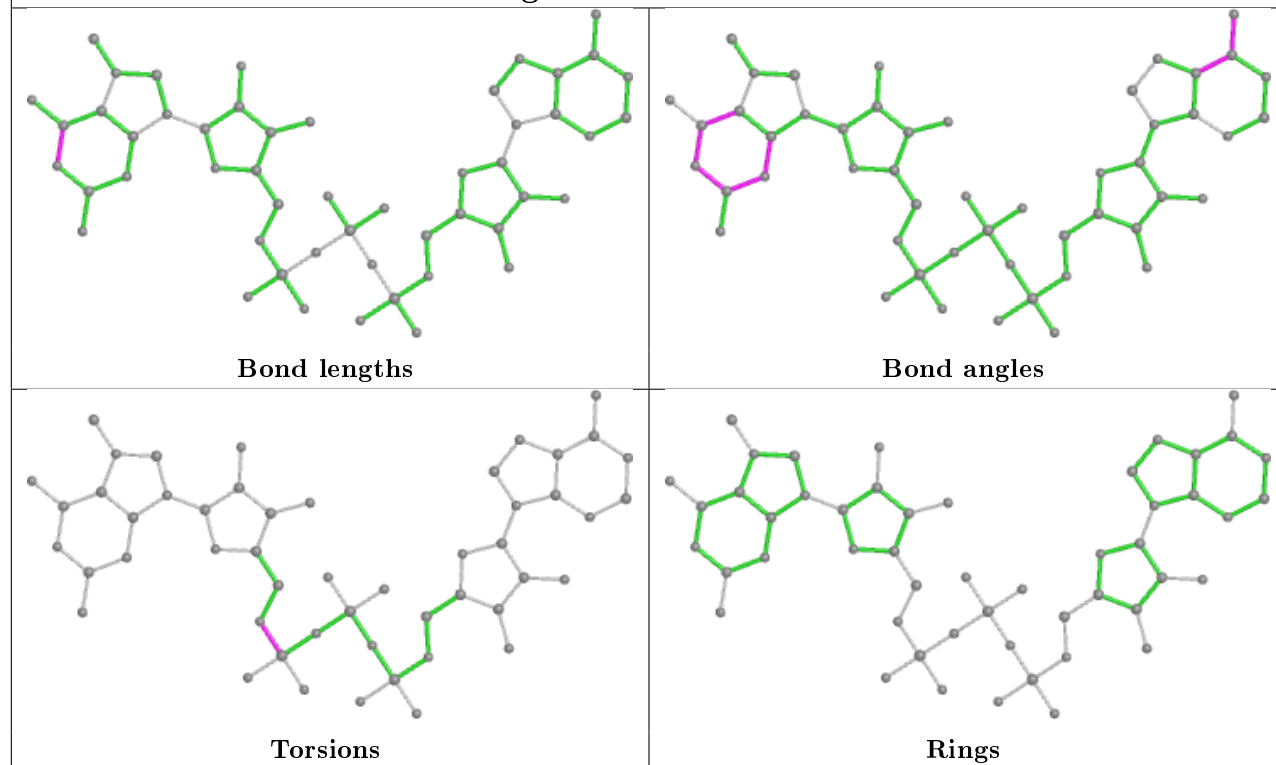
Mol	Chain	Res	Type	Atoms
4	A	7102	GTA	C5A-O15-P1-O13
5	A	7103	8NK	C5'-O5'-PA-O1A
5	A	7103	8NK	PA-O3A-PB-O3B
5	A	7103	8NK	O4'-C4'-C5'-O5'
5	A	7103	8NK	C3'-C4'-C5'-O5'
5	A	7103	8NK	C5'-O5'-PA-O3A
5	A	7103	8NK	PB-O3A-PA-O1A
4	A	7102	GTA	C5A-O15-P1-O11
5	A	7103	8NK	PA-O3A-PB-O1B
5	A	7103	8NK	PA-O3A-PB-O2B

There are no ring outliers.

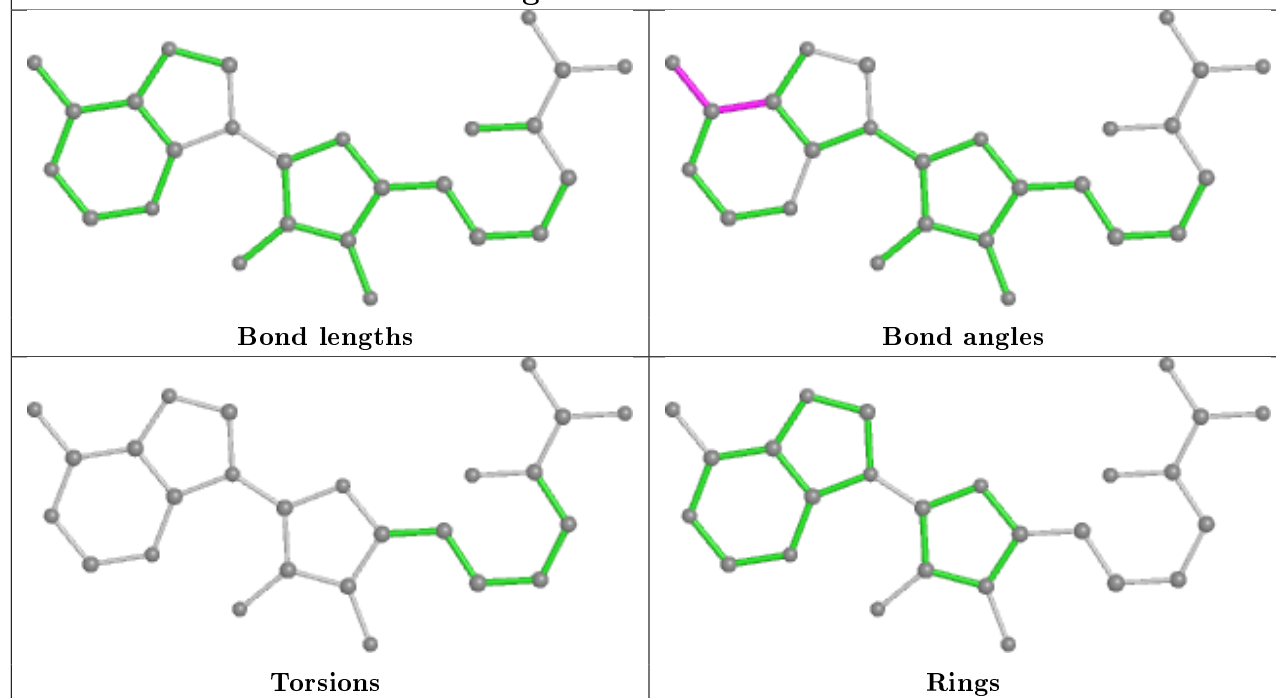
No monomer is involved in short contacts.

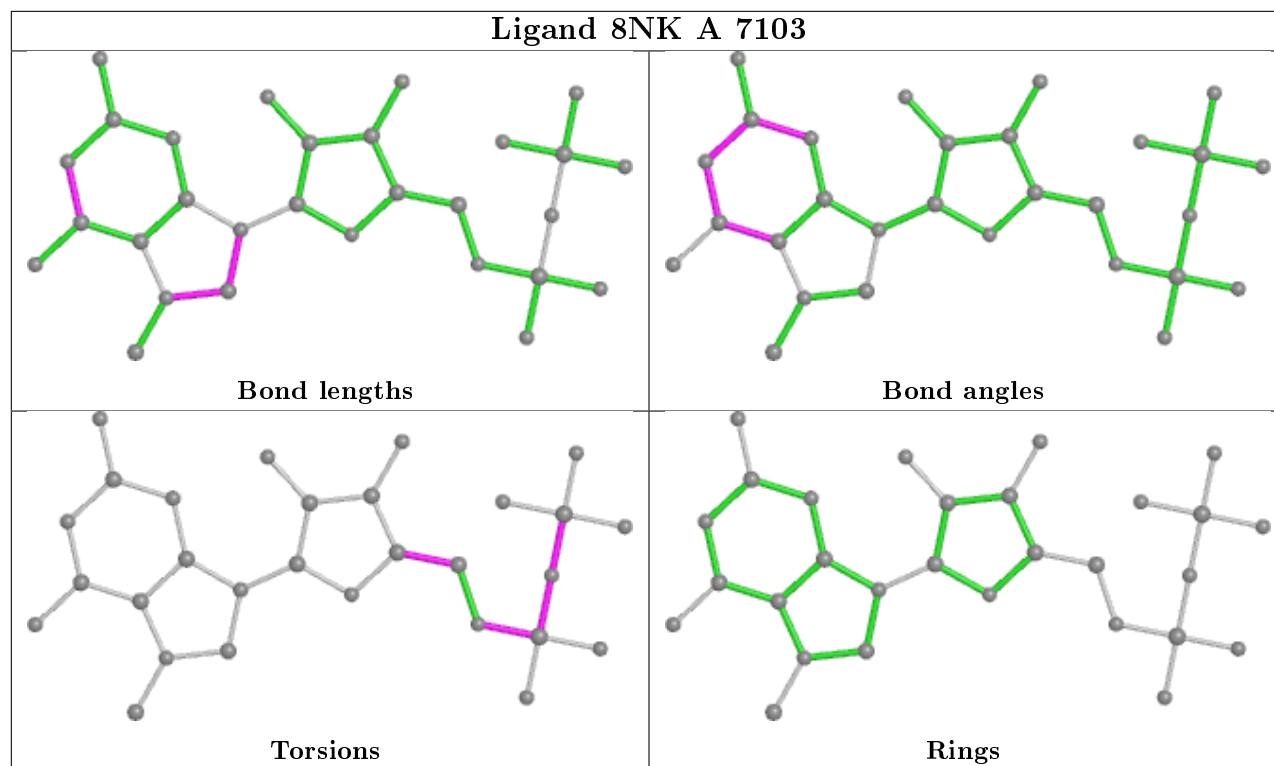
The following is a two-dimensional graphical depiction of Mogul quality analysis of bond lengths, bond angles, torsion angles, and ring geometry for all instances of the Ligand of Interest. In addition, ligands with molecular weight > 250 and outliers as shown on the validation Tables will also be included. For torsion angles, if less than 5% of the Mogul distribution of torsion angles is within 10 degrees of the torsion angle in question, then that torsion angle is considered an outlier. Any bond that is central to one or more torsion angles identified as an outlier by Mogul will be highlighted in the graph. For rings, the root-mean-square deviation (RMSD) between the ring in question and similar rings identified by Mogul is calculated over all ring torsion angles. If the average RMSD is greater than 60 degrees and the minimal RMSD between the ring in question and any Mogul-identified rings is also greater than 60 degrees, then that ring is considered an outlier. The outliers are highlighted in purple. The color gray indicates Mogul did not find sufficient equivalents in the CSD to analyse the geometry.

## Ligand GTA A 7102



## Ligand SAH A 7101





## 5.7 Other polymers [i](#)

There are no such residues in this entry.

## 5.8 Polymer linkage issues [i](#)

There are no chain breaks in this entry.

## 6 Fit of model and data ⓘ

### 6.1 Protein, DNA and RNA chains ⓘ

In the following table, the column labelled ‘#RSRZ> 2’ contains the number (and percentage) of RSRZ outliers, followed by percent RSRZ outliers for the chain as percentile scores relative to all X-ray entries and entries of similar resolution. The OWAB column contains the minimum, median, 95<sup>th</sup> percentile and maximum values of the occupancy-weighted average B-factor per residue. The column labelled ‘Q< 0.9’ lists the number of (and percentage) of residues with an average occupancy less than 0.9.

Mol	Chain	Analysed	<RSRZ>	#RSRZ>2		OWAB(Å <sup>2</sup> )	Q<0.9
1	A	299/301 (99%)	0.34	38 (12%)	3 5	33, 45, 84, 113	0
2	B	119/142 (83%)	1.01	32 (26%)	0 0	42, 72, 122, 147	0
All	All	418/443 (94%)	0.53	70 (16%)	1 2	33, 51, 105, 147	0

All (70) RSRZ outliers are listed below:

Mol	Chain	Res	Type	RSRZ
2	B	4339	PRO	10.2
2	B	4267	LEU	6.8
2	B	4265	THR	6.8
1	A	6798	ALA	6.4
2	B	4340	LYS	6.1
1	A	7096	ASN	5.7
2	B	4264	SER	5.6
2	B	4268	SER	5.5
2	B	4383	CYS	5.0
2	B	4285	ALA	4.8
1	A	6967	ILE	4.7
2	B	4284	LEU	4.5
2	B	4372	VAL	4.4
1	A	7095	ASN	4.3
1	A	6829	GLY	4.3
2	B	4342	PHE	4.1
1	A	6799[A]	SER	4.1
2	B	4384	ASP	3.8
1	A	7061	LYS	3.8
1	A	6926	ILE	3.8
2	B	4382	SER	3.8
1	A	7004[A]	LEU	3.8
1	A	6924	LEU	3.7
2	B	4276	ALA	3.7

*Continued on next page...*



*Continued from previous page...*

Mol	Chain	Res	Type	RSRZ
1	A	6925	ILE	3.7
1	A	7062	GLU	3.6
2	B	4287	GLY	3.6
2	B	4289	GLN	3.6
2	B	4385	GLN	3.6
1	A	6969	ILE	3.6
2	B	4269	PHE	3.5
2	B	4266	VAL	3.5
2	B	4338	ASN	3.5
2	B	4341	GLY	3.5
2	B	4278	LYS	3.4
2	B	4371	THR	3.0
1	A	7064	GLN	3.0
1	A	6938	THR	2.9
1	A	6866	ILE	2.9
1	A	7003	PHE	2.9
2	B	4282	ASP	2.9
1	A	6828	TYR	2.8
2	B	4288	GLY	2.8
1	A	6965	VAL	2.7
1	A	6966	ALA	2.7
1	A	6830	ASP	2.7
2	B	4370	CYS	2.7
2	B	4333	HIS	2.6
1	A	7005	ILE	2.6
1	A	6883	LEU	2.5
1	A	6826	GLN	2.5
1	A	6927	SER	2.5
1	A	7002	ALA	2.4
2	B	4337	PRO	2.4
1	A	7063	GLY	2.4
1	A	7065	ILE	2.4
1	A	6936	ASN	2.3
1	A	7052	LEU	2.3
1	A	7093	LEU	2.3
2	B	4373	CYS	2.3
1	A	6848	LEU	2.2
1	A	6880	THR	2.2
2	B	4270	CYS	2.2
1	A	6937	VAL	2.1
1	A	6865	VAL	2.1
2	B	4286[A]	SER	2.1

*Continued on next page...*

*Continued from previous page...*

Mol	Chain	Res	Type	RSRZ
1	A	6831	SER	2.0
2	B	4281	LYS	2.0
1	A	6882	VAL	2.0
1	A	6879	GLY	2.0

## 6.2 Non-standard residues in protein, DNA, RNA chains ⓘ

There are no non-standard protein/DNA/RNA residues in this entry.

## 6.3 Carbohydrates ⓘ

There are no monosaccharides in this entry.

## 6.4 Ligands ⓘ

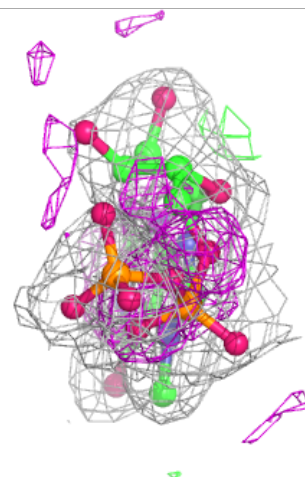
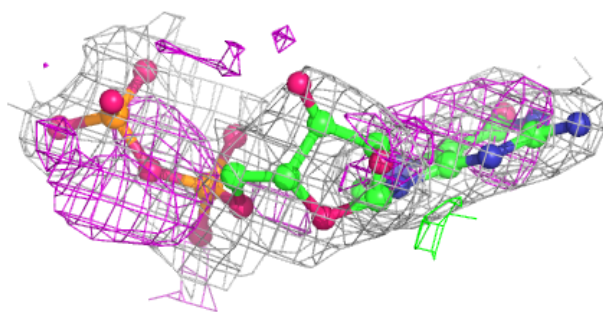
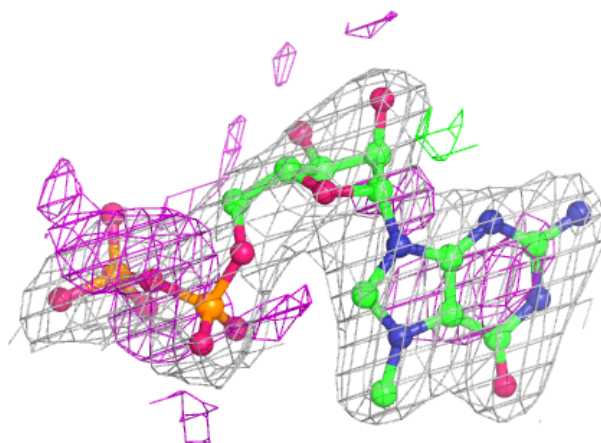
In the following table, the Atoms column lists the number of modelled atoms in the group and the number defined in the chemical component dictionary. The B-factors column lists the minimum, median, 95<sup>th</sup> percentile and maximum values of B factors of atoms in the group. The column labelled 'Q< 0.9' lists the number of atoms with occupancy less than 0.9.

Mol	Type	Chain	Res	Atoms	RSCC	RSR	B-factors(Å <sup>2</sup> )	Q<0.9
6	SO4	A	7109[B]	5/5	0.69	0.34	91,93,100,102	5
6	SO4	A	7109[A]	5/5	0.69	0.34	86,96,101,102	5
6	SO4	A	7108	5/5	0.79	0.36	74,77,81,85	5
6	SO4	B	4404	5/5	0.84	0.20	69,69,72,74	5
5	8NK	A	7103	29/29	0.86	0.25	48,81,147,153	0
6	SO4	A	7107[A]	5/5	0.89	0.18	58,62,67,69	5
6	SO4	B	4403	5/5	0.92	0.28	94,96,100,102	5
4	GTA	A	7102	51/51	0.93	0.20	42,60,93,95	0
7	ZN	B	4402	1/1	0.95	0.08	78,78,78,78	0
6	SO4	A	7105	5/5	0.96	0.13	75,75,79,89	0
3	SAH	A	7101	26/26	0.97	0.08	39,43,45,45	0
7	ZN	B	4401	1/1	0.97	0.04	59,59,59,59	0
6	SO4	A	7106	5/5	0.98	0.10	68,71,78,91	0
6	SO4	A	7104	5/5	0.98	0.17	69,79,85,89	0

The following is a graphical depiction of the model fit to experimental electron density of all instances of the Ligand of Interest. In addition, ligands with molecular weight > 250 and outliers as shown on the geometry validation Tables will also be included. Each fit is shown from different orientation to approximate a three-dimensional view.

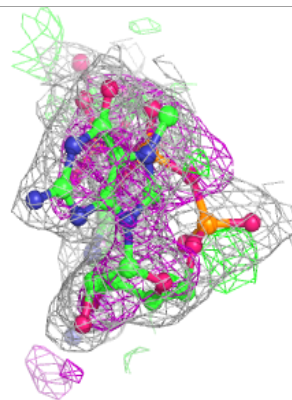
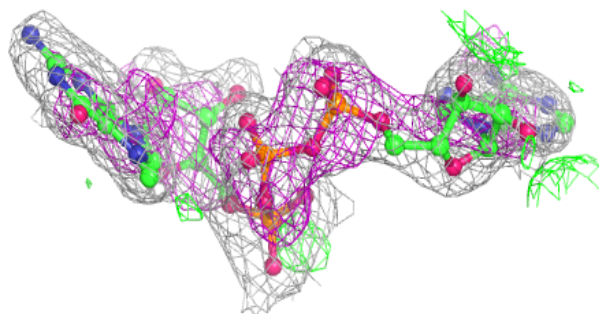
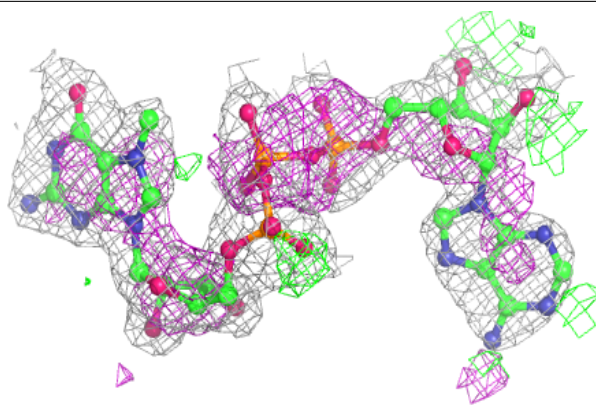
**Electron density around 8NK A 7103:**

$2mF_o-DF_c$  (at 0.7 rmsd) in gray  
 $mF_o-DF_c$  (at 3 rmsd) in purple (negative)  
and green (positive)



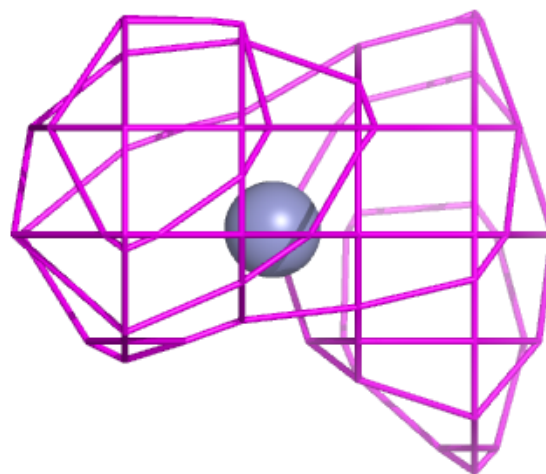
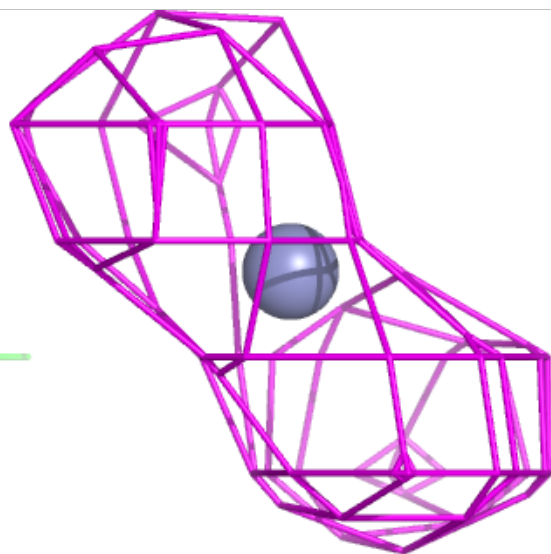
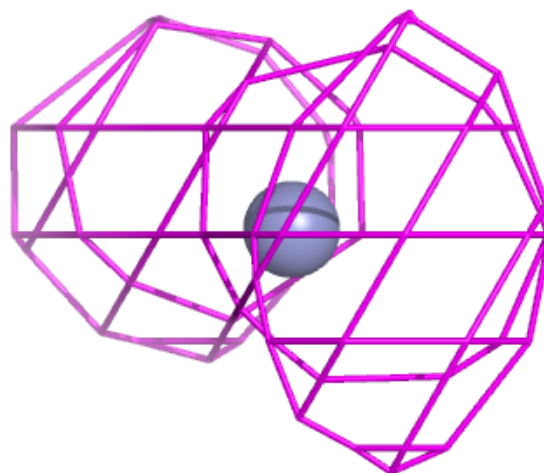
**Electron density around GTA A 7102:**

$2mF_o-DF_c$  (at 0.7 rmsd) in gray  
 $mF_o-DF_c$  (at 3 rmsd) in purple (negative)  
and green (positive)



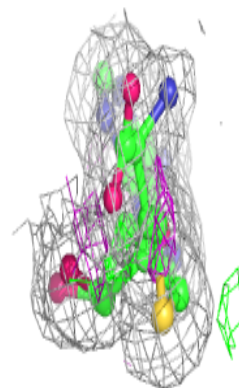
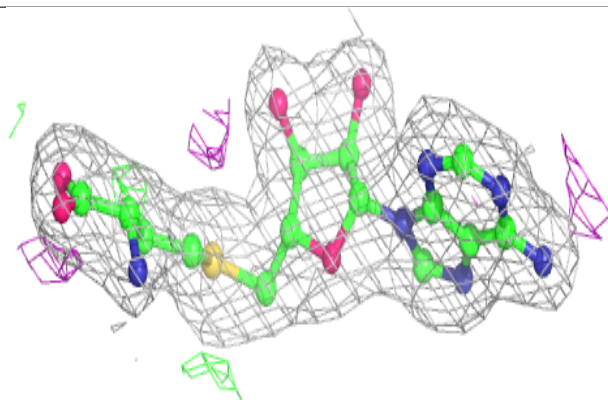
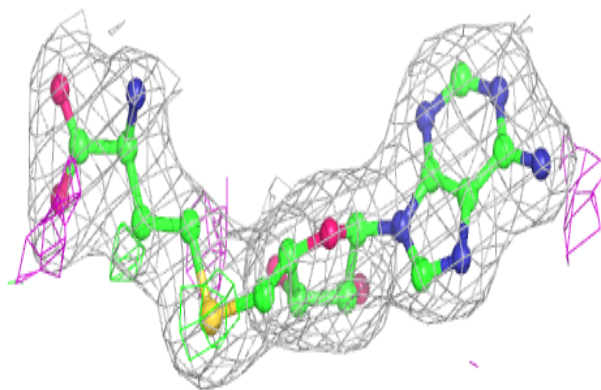
**Electron density around ZN B 4402:**

$2mF_o-DF_c$  (at 0.7 rmsd) in gray  
 $mF_o-DF_c$  (at 3 rmsd) in purple (negative)  
and green (positive)



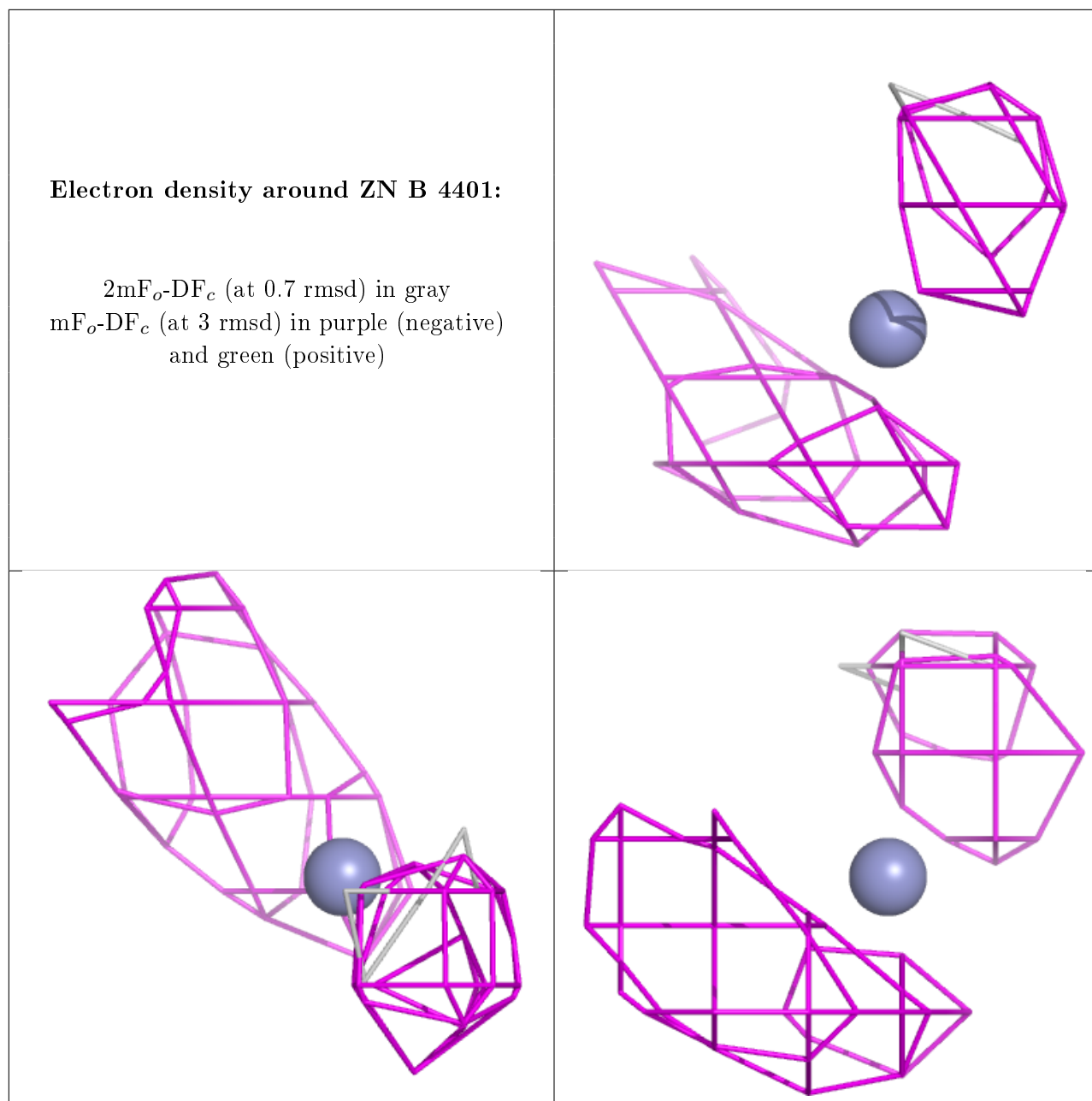
**Electron density around SAH A 7101:**

$2mF_o - DF_c$  (at 0.7 rmsd) in gray  
 $mF_o - DF_c$  (at 3 rmsd) in purple (negative)  
and green (positive)



**Electron density around ZN B 4401:**

$2mF_o-DF_c$  (at 0.7 rmsd) in gray  
 $mF_o-DF_c$  (at 3 rmsd) in purple (negative)  
and green (positive)



## 6.5 Other polymers ⓘ

There are no such residues in this entry.