



wwPDB X-ray Structure Validation Summary Report ⓘ

Nov 30, 2022 – 07:25 AM JST

PDB ID : 7WRT
Title : X-ray structure ofThermus thermophilus HB8 transketorase demonstrate in complex with TPP and D-erythrose-4-phosphate
Authors : Kamitori, S.; Yoshihara, A.
Deposited on : 2022-01-27
Resolution : 2.25 Å(reported)

This is a wwPDB X-ray Structure Validation Summary Report for a publicly released PDB entry.

We welcome your comments at validation@mail.wwpdb.org

A user guide is available at

<https://www.wwpdb.org/validation/2017/XrayValidationReportHelp>

with specific help available everywhere you see the ⓘ symbol.

The types of validation reports are described at

<http://www.wwpdb.org/validation/2017/FAQs#types>.

The following versions of software and data (see [references ⓘ](#)) were used in the production of this report:

MolProbity	:	4.02b-467
Mogul	:	1.8.5 (274361), CSD as541be (2020)
Xtriage (Phenix)	:	1.13
EDS	:	2.31.3
buster-report	:	1.1.7 (2018)
Percentile statistics	:	20191225.v01 (using entries in the PDB archive December 25th 2019)
Refmac	:	5.8.0158
CCP4	:	7.0.044 (Gargrove)
Ideal geometry (proteins)	:	Engh & Huber (2001)
Ideal geometry (DNA, RNA)	:	Parkinson et al. (1996)
Validation Pipeline (wwPDB-VP)	:	2.31.3

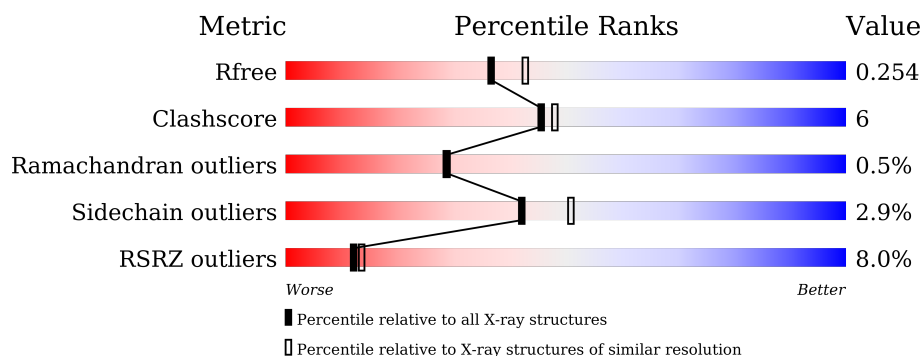
1 Overall quality at a glance

The following experimental techniques were used to determine the structure:

X-RAY DIFFRACTION

The reported resolution of this entry is 2.25 Å.

Percentile scores (ranging between 0-100) for global validation metrics of the entry are shown in the following graphic. The table shows the number of entries on which the scores are based.



Metric	Whole archive (#Entries)	Similar resolution (#Entries, resolution range(Å))
R_{free}	130704	1377 (2.26-2.26)
Clashscore	141614	1487 (2.26-2.26)
Ramachandran outliers	138981	1449 (2.26-2.26)
Sidechain outliers	138945	1450 (2.26-2.26)
RSRZ outliers	127900	1356 (2.26-2.26)

The table below summarises the geometric issues observed across the polymeric chains and their fit to the electron density. The red, orange, yellow and green segments of the lower bar indicate the fraction of residues that contain outliers for ≥ 3 , 2, 1 and 0 types of geometric quality criteria respectively. A grey segment represents the fraction of residues that are not modelled. The numeric value for each fraction is indicated below the corresponding segment, with a dot representing fractions $\leq 5\%$. The upper red bar (where present) indicates the fraction of residues that have poor fit to the electron density. The numeric value is given above the bar.

Mol	Chain	Length	Quality of chain
1	A	672	<div> <div>3%</div> <div>88%</div> <div>9%</div> <div>.</div> </div>
1	B	672	<div> <div>2%</div> <div>83%</div> <div>13%</div> <div>.</div> </div>
1	C	672	<div> <div>7%</div> <div>76%</div> <div>20%</div> <div>.</div> </div>
1	D	672	<div> <div>18%</div> <div>72%</div> <div>23%</div> <div>..</div> </div>

2 Entry composition

There are 5 unique types of molecules in this entry. The entry contains 20619 atoms, of which 0 are hydrogens and 0 are deuteriums.

In the tables below, the ZeroOcc column contains the number of atoms modelled with zero occupancy, the AltConf column contains the number of residues with at least one atom in alternate conformation and the Trace column contains the number of residues modelled with at most 2 atoms.

- Molecule 1 is a protein called Transketolase.

Mol	Chain	Residues	Atoms					ZeroOcc	AltConf	Trace
1	A	650	Total	C	N	O	S	0	0	0
			5070	3236	902	917	15			
1	B	650	Total	C	N	O	S	0	0	0
			5070	3236	902	917	15			
1	C	650	Total	C	N	O	S	0	0	0
			5070	3236	902	917	15			
1	D	650	Total	C	N	O	S	0	0	0
			5070	3236	902	917	15			

There are 84 discrepancies between the modelled and reference sequences:

Chain	Residue	Modelled	Actual	Comment	Reference
A	-20	MET	-	initiating methionine	UNP Q5SM35
A	-19	GLY	-	expression tag	UNP Q5SM35
A	-18	SER	-	expression tag	UNP Q5SM35
A	-17	SER	-	expression tag	UNP Q5SM35
A	-16	HIS	-	expression tag	UNP Q5SM35
A	-15	HIS	-	expression tag	UNP Q5SM35
A	-14	HIS	-	expression tag	UNP Q5SM35
A	-13	HIS	-	expression tag	UNP Q5SM35
A	-12	HIS	-	expression tag	UNP Q5SM35
A	-11	HIS	-	expression tag	UNP Q5SM35
A	-10	SER	-	expression tag	UNP Q5SM35
A	-9	SER	-	expression tag	UNP Q5SM35
A	-8	GLY	-	expression tag	UNP Q5SM35
A	-7	LEU	-	expression tag	UNP Q5SM35
A	-6	VAL	-	expression tag	UNP Q5SM35
A	-5	PRO	-	expression tag	UNP Q5SM35
A	-4	ARG	-	expression tag	UNP Q5SM35
A	-3	GLY	-	expression tag	UNP Q5SM35
A	-2	SER	-	expression tag	UNP Q5SM35
A	-1	HIS	-	expression tag	UNP Q5SM35
A	0	SER	-	expression tag	UNP Q5SM35

Continued on next page...

Continued from previous page...

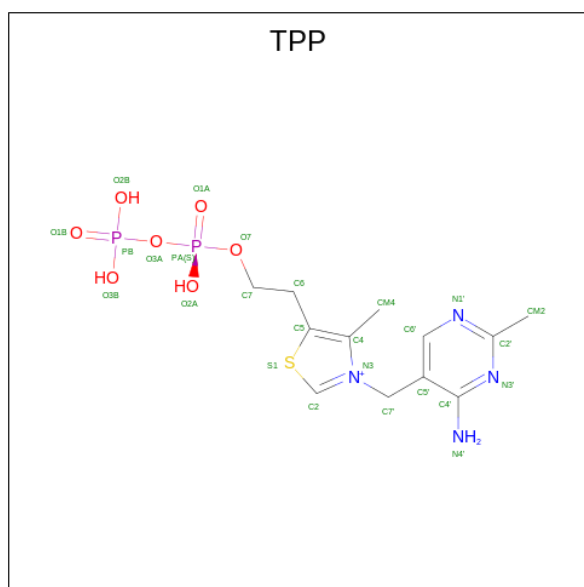
Chain	Residue	Modelled	Actual	Comment	Reference
B	-20	MET	-	initiating methionine	UNP Q5SM35
B	-19	GLY	-	expression tag	UNP Q5SM35
B	-18	SER	-	expression tag	UNP Q5SM35
B	-17	SER	-	expression tag	UNP Q5SM35
B	-16	HIS	-	expression tag	UNP Q5SM35
B	-15	HIS	-	expression tag	UNP Q5SM35
B	-14	HIS	-	expression tag	UNP Q5SM35
B	-13	HIS	-	expression tag	UNP Q5SM35
B	-12	HIS	-	expression tag	UNP Q5SM35
B	-11	HIS	-	expression tag	UNP Q5SM35
B	-10	SER	-	expression tag	UNP Q5SM35
B	-9	SER	-	expression tag	UNP Q5SM35
B	-8	GLY	-	expression tag	UNP Q5SM35
B	-7	LEU	-	expression tag	UNP Q5SM35
B	-6	VAL	-	expression tag	UNP Q5SM35
B	-5	PRO	-	expression tag	UNP Q5SM35
B	-4	ARG	-	expression tag	UNP Q5SM35
B	-3	GLY	-	expression tag	UNP Q5SM35
B	-2	SER	-	expression tag	UNP Q5SM35
B	-1	HIS	-	expression tag	UNP Q5SM35
B	0	SER	-	expression tag	UNP Q5SM35
C	-20	MET	-	initiating methionine	UNP Q5SM35
C	-19	GLY	-	expression tag	UNP Q5SM35
C	-18	SER	-	expression tag	UNP Q5SM35
C	-17	SER	-	expression tag	UNP Q5SM35
C	-16	HIS	-	expression tag	UNP Q5SM35
C	-15	HIS	-	expression tag	UNP Q5SM35
C	-14	HIS	-	expression tag	UNP Q5SM35
C	-13	HIS	-	expression tag	UNP Q5SM35
C	-12	HIS	-	expression tag	UNP Q5SM35
C	-11	HIS	-	expression tag	UNP Q5SM35
C	-10	SER	-	expression tag	UNP Q5SM35
C	-9	SER	-	expression tag	UNP Q5SM35
C	-8	GLY	-	expression tag	UNP Q5SM35
C	-7	LEU	-	expression tag	UNP Q5SM35
C	-6	VAL	-	expression tag	UNP Q5SM35
C	-5	PRO	-	expression tag	UNP Q5SM35
C	-4	ARG	-	expression tag	UNP Q5SM35
C	-3	GLY	-	expression tag	UNP Q5SM35
C	-2	SER	-	expression tag	UNP Q5SM35
C	-1	HIS	-	expression tag	UNP Q5SM35
C	0	SER	-	expression tag	UNP Q5SM35

Continued on next page...

Continued from previous page...

Chain	Residue	Modelled	Actual	Comment	Reference
D	-20	MET	-	initiating methionine	UNP Q5SM35
D	-19	GLY	-	expression tag	UNP Q5SM35
D	-18	SER	-	expression tag	UNP Q5SM35
D	-17	SER	-	expression tag	UNP Q5SM35
D	-16	HIS	-	expression tag	UNP Q5SM35
D	-15	HIS	-	expression tag	UNP Q5SM35
D	-14	HIS	-	expression tag	UNP Q5SM35
D	-13	HIS	-	expression tag	UNP Q5SM35
D	-12	HIS	-	expression tag	UNP Q5SM35
D	-11	HIS	-	expression tag	UNP Q5SM35
D	-10	SER	-	expression tag	UNP Q5SM35
D	-9	SER	-	expression tag	UNP Q5SM35
D	-8	GLY	-	expression tag	UNP Q5SM35
D	-7	LEU	-	expression tag	UNP Q5SM35
D	-6	VAL	-	expression tag	UNP Q5SM35
D	-5	PRO	-	expression tag	UNP Q5SM35
D	-4	ARG	-	expression tag	UNP Q5SM35
D	-3	GLY	-	expression tag	UNP Q5SM35
D	-2	SER	-	expression tag	UNP Q5SM35
D	-1	HIS	-	expression tag	UNP Q5SM35
D	0	SER	-	expression tag	UNP Q5SM35

- Molecule 2 is THIAMINE DIPHOSPHATE (three-letter code: TPP) (formula: C₁₂H₁₉N₄O₇P₂S).



Mol	Chain	Residues	Atoms						ZeroOcc	AltConf
2	A	1	Total	C	N	O	P	S	0	0
			26	12	4	7	2	1		

Continued on next page...

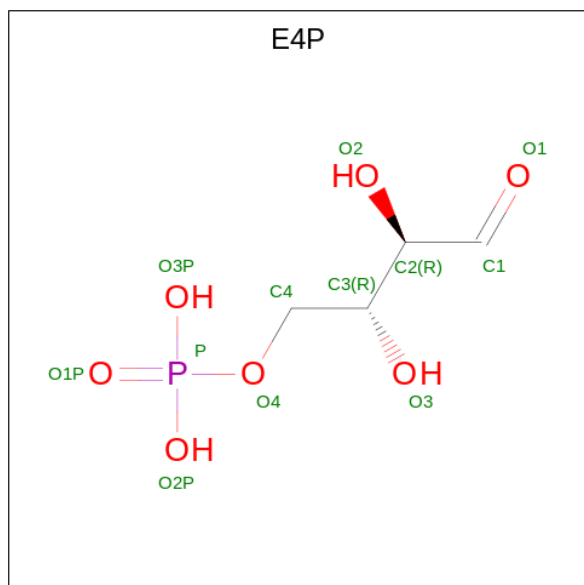
Continued from previous page...

Mol	Chain	Residues	Atoms						ZeroOcc	AltConf
2	B	1	Total	C	N	O	P	S	0	0
			26	12	4	7	2	1		
2	C	1	Total	C	N	O	P	S	0	0
			26	12	4	7	2	1		
2	D	1	Total	C	N	O	P	S	0	0
			26	12	4	7	2	1		

- Molecule 3 is CALCIUM ION (three-letter code: CA) (formula: Ca).

Mol	Chain	Residues	Atoms		ZeroOcc	AltConf
3	A	1	Total	Ca	0	0
			1	1		
3	B	1	Total	Ca	0	0
			1	1		
3	C	1	Total	Ca	0	0
			1	1		
3	D	1	Total	Ca	0	0
			1	1		

- Molecule 4 is ERYTHROSE-4-PHOSPHATE (three-letter code: E4P) (formula: C₄H₉O₇P).



Mol	Chain	Residues	Atoms				ZeroOcc	AltConf
4	A	1	Total	C	O	P	0	0
			12	4	7	1		
4	B	1	Total	C	O	P	0	0
			12	4	7	1		

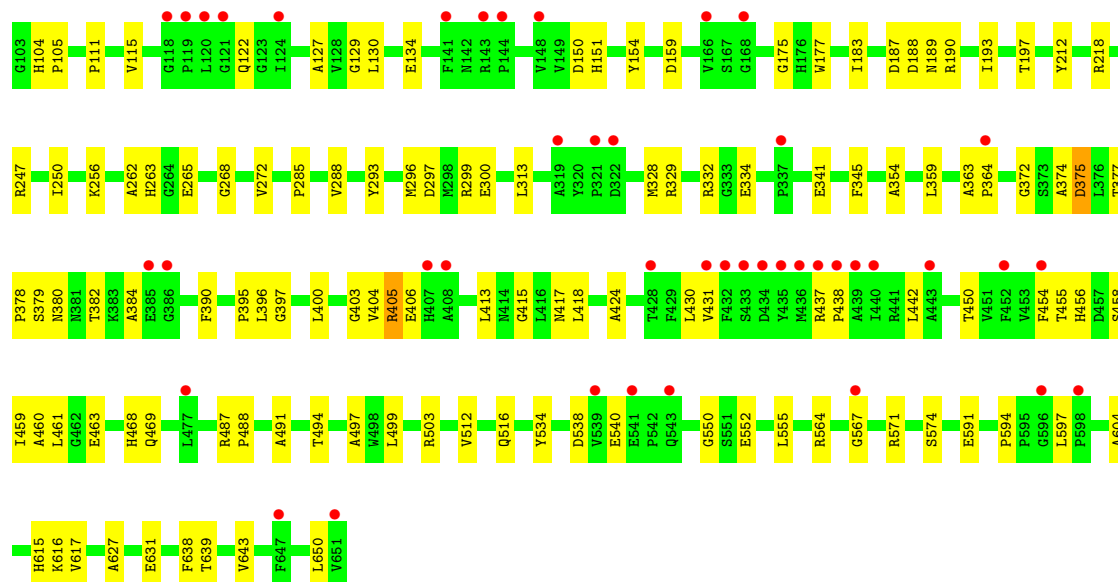
Continued on next page...

Continued from previous page...

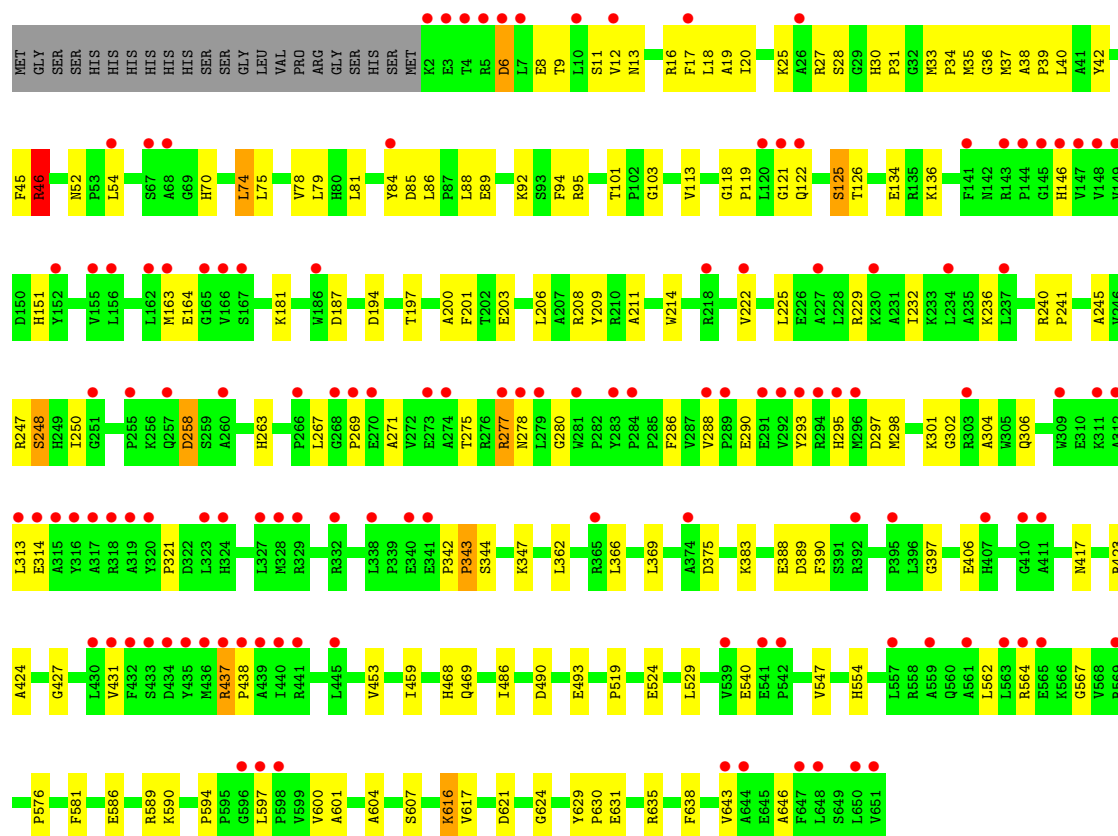
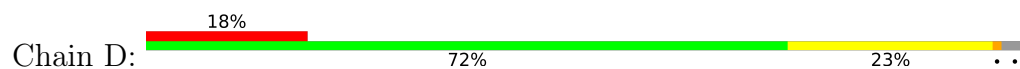
Mol	Chain	Residues	Atoms				ZeroOcc	AltConf
4	C	1	Total	C	O	P	0	0
			12	4	7	1		
4	D	1	Total	C	O	P	0	0
			12	4	7	1		

- Molecule 5 is water.

Mol	Chain	Residues	Atoms		ZeroOcc	AltConf
5	A	56	Total	O	0	0
			56	56		
5	B	61	Total	O	0	0
			61	61		
5	C	38	Total	O	0	0
			38	38		
5	D	28	Total	O	0	0
			28	28		



• Molecule 1: Transketolase



4 Data and refinement statistics

Property	Value	Source
Space group	P 1	Depositor
Cell constants a, b, c, α , β , γ	72.68Å 88.86Å 117.37Å 72.31° 88.70° 73.46°	Depositor
Resolution (Å)	41.86 – 2.25 41.86 – 2.25	Depositor EDS
% Data completeness (in resolution range)	98.2 (41.86-2.25) 98.2 (41.86-2.25)	Depositor EDS
R_{merge}	(Not available)	Depositor
R_{sym}	(Not available)	Depositor
$\langle I/\sigma(I) \rangle$ ¹	2.16 (at 2.24Å)	Xtriage
Refinement program	REFMAC 5.8.0267	Depositor
R, R_{free}	0.202 , 0.254 0.207 , 0.254	Depositor DCC
R_{free} test set	6251 reflections (5.01%)	wwPDB-VP
Wilson B-factor (Å ²)	46.6	Xtriage
Anisotropy	0.050	Xtriage
Bulk solvent k_{sol} (e/Å ³), B_{sol} (Å ²)	0.33 , 37.1	EDS
L-test for twinning ²	$\langle L \rangle = 0.50$, $\langle L^2 \rangle = 0.33$	Xtriage
Estimated twinning fraction	No twinning to report.	Xtriage
F_o, F_c correlation	0.96	EDS
Total number of atoms	20619	wwPDB-VP
Average B, all atoms (Å ²)	59.0	wwPDB-VP

Xtriage's analysis on translational NCS is as follows: *The largest off-origin peak in the Patterson function is 3.48% of the height of the origin peak. No significant pseudotranslation is detected.*

¹Intensities estimated from amplitudes.

²Theoretical values of $\langle |L| \rangle$, $\langle L^2 \rangle$ for acentric reflections are 0.5, 0.333 respectively for untwinned datasets, and 0.375, 0.2 for perfectly twinned datasets.

5 Model quality [i](#)

5.1 Standard geometry [i](#)

Bond lengths and bond angles in the following residue types are not validated in this section: E4P, TPP, CA

The Z score for a bond length (or angle) is the number of standard deviations the observed value is removed from the expected value. A bond length (or angle) with $|Z| > 5$ is considered an outlier worth inspection. RMSZ is the root-mean-square of all Z scores of the bond lengths (or angles).

Mol	Chain	Bond lengths		Bond angles	
		RMSZ	$\# Z > 5$	RMSZ	$\# Z > 5$
1	A	0.77	0/5205	0.92	0/7080
1	B	0.77	1/5205 (0.0%)	0.89	0/7080
1	C	0.77	0/5205	0.88	0/7080
1	D	0.75	0/5205	0.86	0/7080
All	All	0.76	1/20820 (0.0%)	0.89	0/28320

All (1) bond length outliers are listed below:

Mol	Chain	Res	Type	Atoms	Z	Observed(Å)	Ideal(Å)
1	B	552	GLU	CD-OE2	5.71	1.31	1.25

There are no bond angle outliers.

There are no chirality outliers.

There are no planarity outliers.

5.2 Too-close contacts [i](#)

In the following table, the Non-H and H(model) columns list the number of non-hydrogen atoms and hydrogen atoms in the chain respectively. The H(added) column lists the number of hydrogen atoms added and optimized by MolProbity. The Clashes column lists the number of clashes within the asymmetric unit, whereas Symm-Clashes lists symmetry-related clashes.

Mol	Chain	Non-H	H(model)	H(added)	Clashes	Symm-Clashes
1	A	5070	0	5041	31	0
1	B	5070	0	5041	55	0
1	C	5070	0	5041	76	0
1	D	5070	0	5041	97	0
2	A	26	0	16	5	0
2	B	26	0	16	7	0

Continued on next page...

Continued from previous page...

Mol	Chain	Non-H	H(model)	H(added)	Clashes	Symm-Clashes
2	C	26	0	16	4	0
2	D	26	0	16	2	0
3	A	1	0	0	0	0
3	B	1	0	0	0	0
3	C	1	0	0	0	0
3	D	1	0	0	0	0
4	A	12	0	7	2	0
4	B	12	0	7	0	0
4	C	12	0	7	0	0
4	D	12	0	7	0	0
5	A	56	0	0	0	0
5	B	61	0	0	4	0
5	C	38	0	0	1	0
5	D	28	0	0	2	0
All	All	20619	0	20256	259	0

The all-atom clashscore is defined as the number of clashes found per 1000 atoms (including hydrogen atoms). The all-atom clashscore for this structure is 6.

The worst 5 of 259 close contacts within the same asymmetric unit are listed below, sorted by their clash magnitude.

Atom-1	Atom-2	Interatomic distance (Å)	Clash overlap (Å)
1:A:344:SER:O	1:A:357:ARG:NH1	2.03	0.92
1:B:417:ASN:HD21	1:B:424:ALA:H	1.24	0.81
1:A:417:ASN:HD21	1:A:424:ALA:H	1.32	0.77
1:B:503:ARG:HD3	5:B:956:HOH:O	1.88	0.74
1:D:52:ASN:ND2	1:D:306:GLN:OE1	2.21	0.72

There are no symmetry-related clashes.

5.3 Torsion angles [i](#)

5.3.1 Protein backbone [i](#)

In the following table, the Percentiles column shows the percent Ramachandran outliers of the chain as a percentile score with respect to all X-ray entries followed by that with respect to entries of similar resolution.

The Analysed column shows the number of residues for which the backbone conformation was analysed, and the total number of residues.

Mol	Chain	Analysed	Favoured	Allowed	Outliers	Percentiles	
1	A	648/672 (96%)	629 (97%)	19 (3%)	0	100	100
1	B	648/672 (96%)	618 (95%)	30 (5%)	0	100	100
1	C	648/672 (96%)	605 (93%)	41 (6%)	2 (0%)	41	46
1	D	648/672 (96%)	564 (87%)	73 (11%)	11 (2%)	9	4
All	All	2592/2688 (96%)	2416 (93%)	163 (6%)	13 (0%)	29	29

5 of 13 Ramachandran outliers are listed below:

Mol	Chain	Res	Type
1	D	269	PRO
1	D	343	PRO
1	D	46	ARG
1	D	302	GLY
1	C	375	ASP

5.3.2 Protein sidechains ⓘ

In the following table, the Percentiles column shows the percent sidechain outliers of the chain as a percentile score with respect to all X-ray entries followed by that with respect to entries of similar resolution.

The Analysed column shows the number of residues for which the sidechain conformation was analysed, and the total number of residues.

Mol	Chain	Analysed	Rotameric	Outliers	Percentiles	
1	A	521/540 (96%)	510 (98%)	11 (2%)	53	62
1	B	521/540 (96%)	510 (98%)	11 (2%)	53	62
1	C	521/540 (96%)	505 (97%)	16 (3%)	40	49
1	D	521/540 (96%)	499 (96%)	22 (4%)	30	34
All	All	2084/2160 (96%)	2024 (97%)	60 (3%)	42	51

5 of 60 residues with a non-rotameric sidechain are listed below:

Mol	Chain	Res	Type
1	C	265	GLU
1	D	490	ASP
1	C	552	GLU
1	D	437	ARG
1	D	616	LYS

Sometimes sidechains can be flipped to improve hydrogen bonding and reduce clashes. 5 of 17 such sidechains are listed below:

Mol	Chain	Res	Type
1	C	417	ASN
1	D	417	ASN
1	B	417	ASN
1	B	554	HIS
1	B	560	GLN

5.3.3 RNA ⓘ

There are no RNA molecules in this entry.

5.4 Non-standard residues in protein, DNA, RNA chains ⓘ

There are no non-standard protein/DNA/RNA residues in this entry.

5.5 Carbohydrates ⓘ

There are no monosaccharides in this entry.

5.6 Ligand geometry ⓘ

Of 12 ligands modelled in this entry, 4 are monoatomic - leaving 8 for Mogul analysis.

In the following table, the Counts columns list the number of bonds (or angles) for which Mogul statistics could be retrieved, the number of bonds (or angles) that are observed in the model and the number of bonds (or angles) that are defined in the Chemical Component Dictionary. The Link column lists molecule types, if any, to which the group is linked. The Z score for a bond length (or angle) is the number of standard deviations the observed value is removed from the expected value. A bond length (or angle) with $|Z| > 2$ is considered an outlier worth inspection. RMSZ is the root-mean-square of all Z scores of the bond lengths (or angles).

Mol	Type	Chain	Res	Link	Bond lengths			Bond angles		
					Counts	RMSZ	$\# Z > 2$	Counts	RMSZ	$\# Z > 2$
4	E4P	B	801	-	9,11,11	0.70	0	12,15,15	1.11	1 (8%)
4	E4P	C	703	-	9,11,11	0.54	0	12,15,15	2.09	4 (33%)
4	E4P	A	703	-	9,11,11	1.40	1 (11%)	12,15,15	2.70	6 (50%)
2	TPP	D	802	3	22,27,27	0.64	0	29,40,40	0.91	1 (3%)
2	TPP	C	701	3	22,27,27	0.66	0	29,40,40	0.90	1 (3%)
4	E4P	D	801	-	9,11,11	0.74	0	12,15,15	0.98	0

Mol	Type	Chain	Res	Link	Bond lengths			Bond angles		
					Counts	RMSZ	# Z > 2	Counts	RMSZ	# Z > 2
2	TPP	A	701	3	22,27,27	0.73	1 (4%)	29,40,40	0.84	0
2	TPP	B	802	3	22,27,27	0.63	0	29,40,40	0.79	0

In the following table, the Chirals column lists the number of chiral outliers, the number of chiral centers analysed, the number of these observed in the model and the number defined in the Chemical Component Dictionary. Similar counts are reported in the Torsion and Rings columns. '-' means no outliers of that kind were identified.

Mol	Type	Chain	Res	Link	Chirals	Torsions	Rings
4	E4P	B	801	-	-	3/10/12/12	-
4	E4P	C	703	-	-	6/10/12/12	-
4	E4P	A	703	-	-	2/10/12/12	-
2	TPP	D	802	3	-	4/16/17/17	0/2/2/2
2	TPP	C	701	3	-	2/16/17/17	0/2/2/2
4	E4P	D	801	-	-	7/10/12/12	-
2	TPP	A	701	3	-	2/16/17/17	0/2/2/2
2	TPP	B	802	3	-	1/16/17/17	0/2/2/2

All (2) bond length outliers are listed below:

Mol	Chain	Res	Type	Atoms	Z	Observed(Å)	Ideal(Å)
4	A	703	E4P	C4-C3	3.68	1.57	1.51
2	A	701	TPP	C7'-N3	-2.17	1.44	1.48

The worst 5 of 13 bond angle outliers are listed below:

Mol	Chain	Res	Type	Atoms	Z	Observed(°)	Ideal(°)
4	A	703	E4P	P-O4-C4	5.05	132.21	118.30
4	A	703	E4P	O4-P-O1P	-4.88	92.78	106.47
4	C	703	E4P	O4-P-O1P	-4.38	94.20	106.47
4	A	703	E4P	O3-C3-C4	3.86	118.60	109.92
4	C	703	E4P	O2-C2-C1	-3.15	102.64	110.08

There are no chirality outliers.

5 of 27 torsion outliers are listed below:

Mol	Chain	Res	Type	Atoms
2	B	802	TPP	C4-C5-C6-C7
2	D	802	TPP	C4-C5-C6-C7
2	D	802	TPP	C5-C6-C7-O7

Continued on next page...

Continued from previous page...

Mol	Chain	Res	Type	Atoms
4	A	703	E4P	O3-C3-C4-O4
4	B	801	E4P	C4-O4-P-O1P

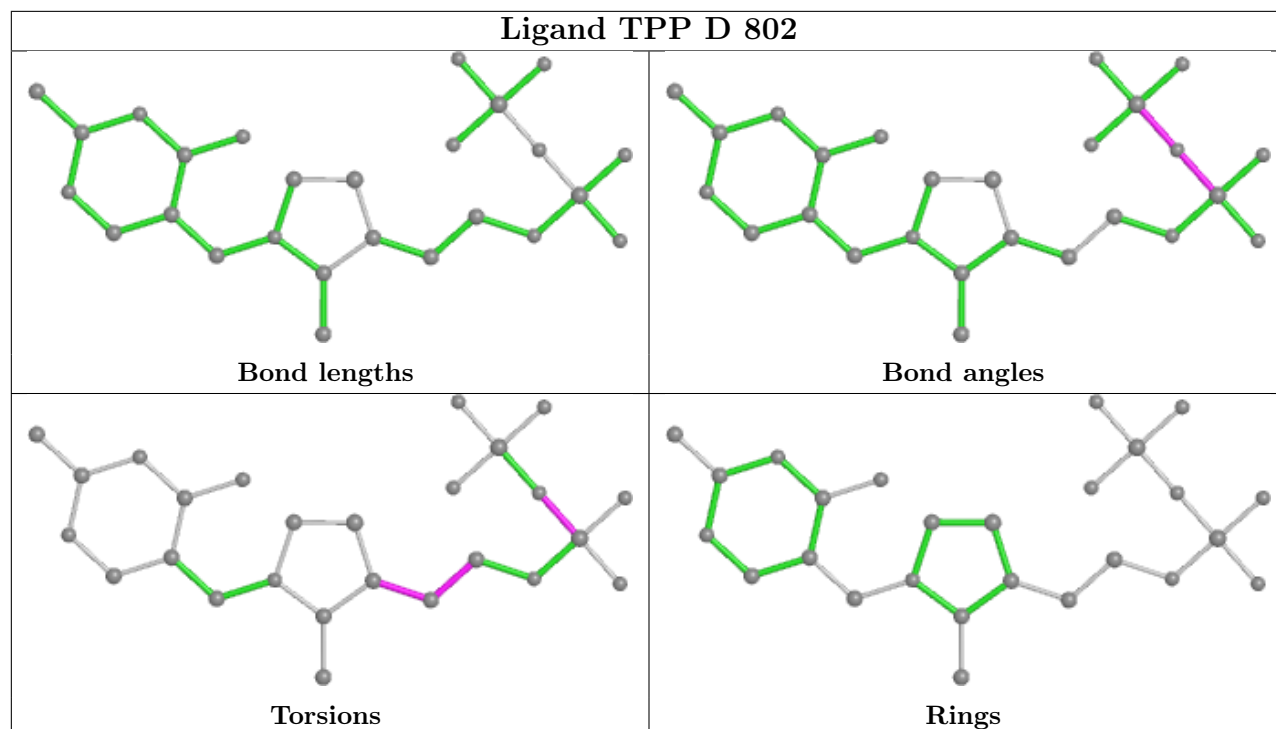
There are no ring outliers.

5 monomers are involved in 19 short contacts:

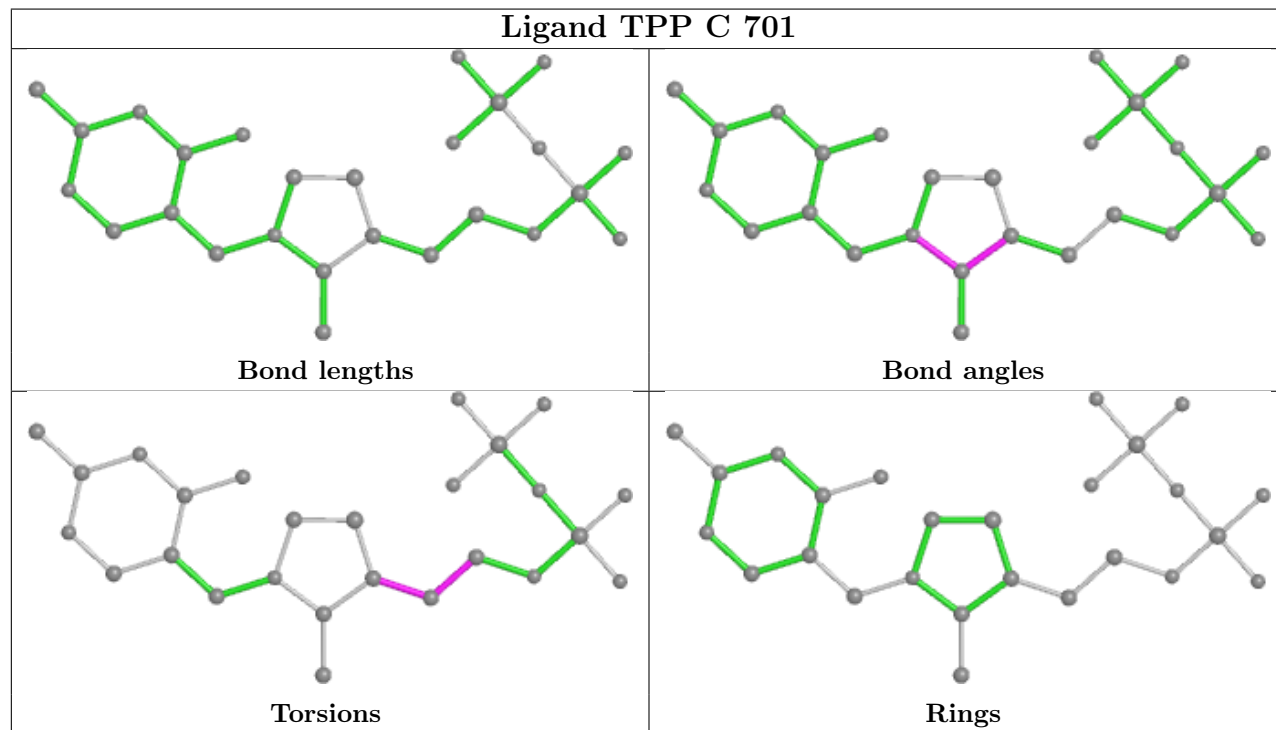
Mol	Chain	Res	Type	Clashes	Symm-Clashes
4	A	703	E4P	2	0
2	D	802	TPP	2	0
2	C	701	TPP	4	0
2	A	701	TPP	5	0
2	B	802	TPP	7	0

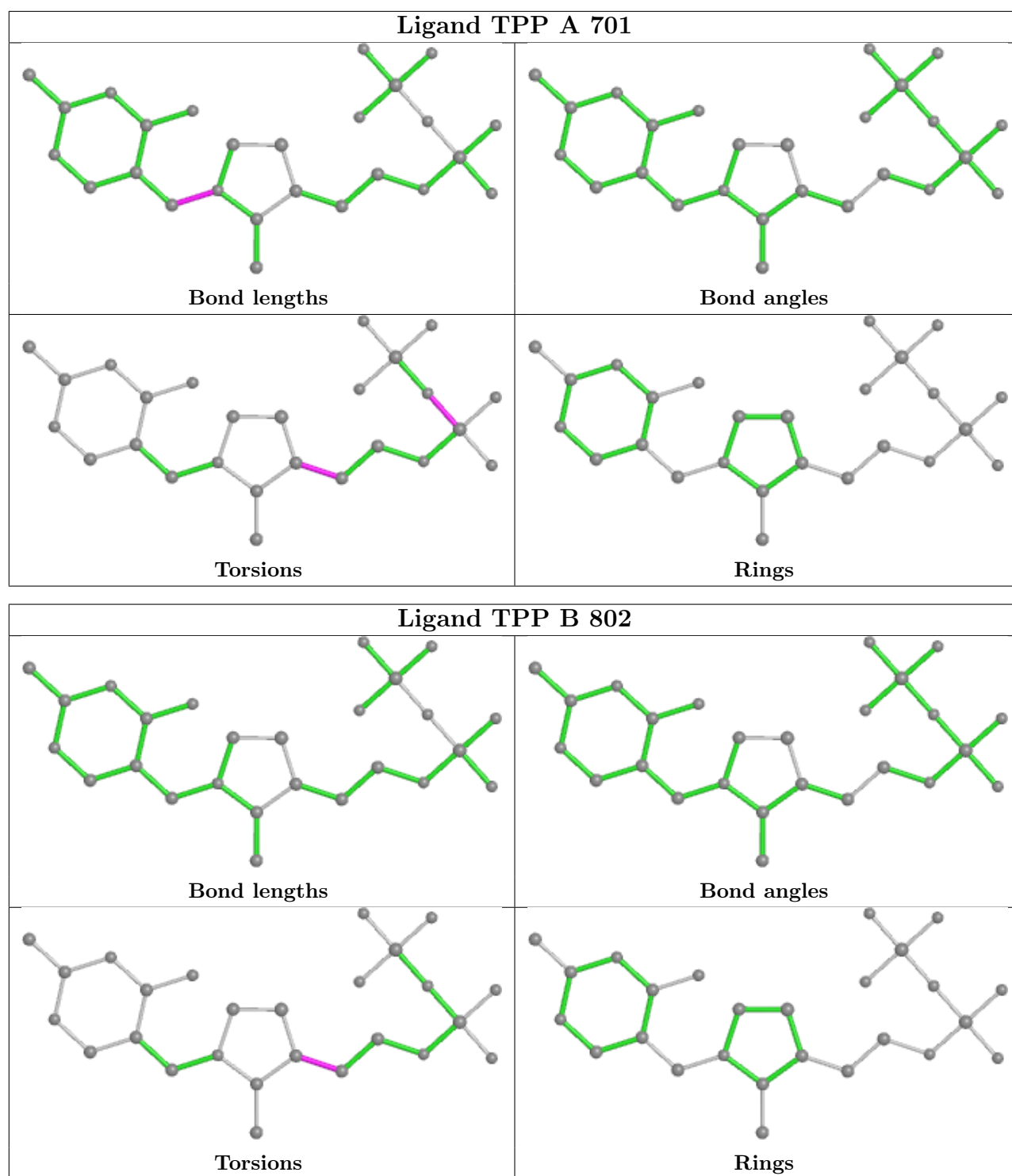
The following is a two-dimensional graphical depiction of Mogul quality analysis of bond lengths, bond angles, torsion angles, and ring geometry for all instances of the Ligand of Interest. In addition, ligands with molecular weight > 250 and outliers as shown on the validation Tables will also be included. For torsion angles, if less than 5% of the Mogul distribution of torsion angles is within 10 degrees of the torsion angle in question, then that torsion angle is considered an outlier. Any bond that is central to one or more torsion angles identified as an outlier by Mogul will be highlighted in the graph. For rings, the root-mean-square deviation (RMSD) between the ring in question and similar rings identified by Mogul is calculated over all ring torsion angles. If the average RMSD is greater than 60 degrees and the minimal RMSD between the ring in question and any Mogul-identified rings is also greater than 60 degrees, then that ring is considered an outlier. The outliers are highlighted in purple. The color gray indicates Mogul did not find sufficient equivalents in the CSD to analyse the geometry.

Ligand TPP D 802



Ligand TPP C 701





5.7 Other polymers [\(i\)](#)

There are no such residues in this entry.

5.8 Polymer linkage issues ⓘ

There are no chain breaks in this entry.

6 Fit of model and data [i](#)

6.1 Protein, DNA and RNA chains [i](#)

In the following table, the column labelled ‘#RSRZ> 2’ contains the number (and percentage) of RSRZ outliers, followed by percent RSRZ outliers for the chain as percentile scores relative to all X-ray entries and entries of similar resolution. The OWAB column contains the minimum, median, 95th percentile and maximum values of the occupancy-weighted average B-factor per residue. The column labelled ‘Q< 0.9’ lists the number of (and percentage) of residues with an average occupancy less than 0.9.

Mol	Chain	Analysed	<RSRZ>	#RSRZ>2			OWAB(Å ²)	Q<0.9
1	A	650/672 (96%)	-0.04	23 (3%)	44	46	24, 42, 65, 149	0
1	B	650/672 (96%)	0.01	15 (2%)	60	63	28, 46, 71, 120	0
1	C	650/672 (96%)	0.33	47 (7%)	15	16	44, 61, 87, 133	0
1	D	650/672 (96%)	0.99	124 (19%)	1	1	44, 75, 111, 160	0
All	All	2600/2688 (96%)	0.32	209 (8%)	12	13	24, 55, 96, 160	0

The worst 5 of 209 RSRZ outliers are listed below:

Mol	Chain	Res	Type	RSRZ
1	D	3	GLU	7.9
1	D	2	LYS	7.9
1	A	2	LYS	7.5
1	D	316	TYR	6.9
1	D	5	ARG	6.6

6.2 Non-standard residues in protein, DNA, RNA chains [i](#)

There are no non-standard protein/DNA/RNA residues in this entry.

6.3 Carbohydrates [i](#)

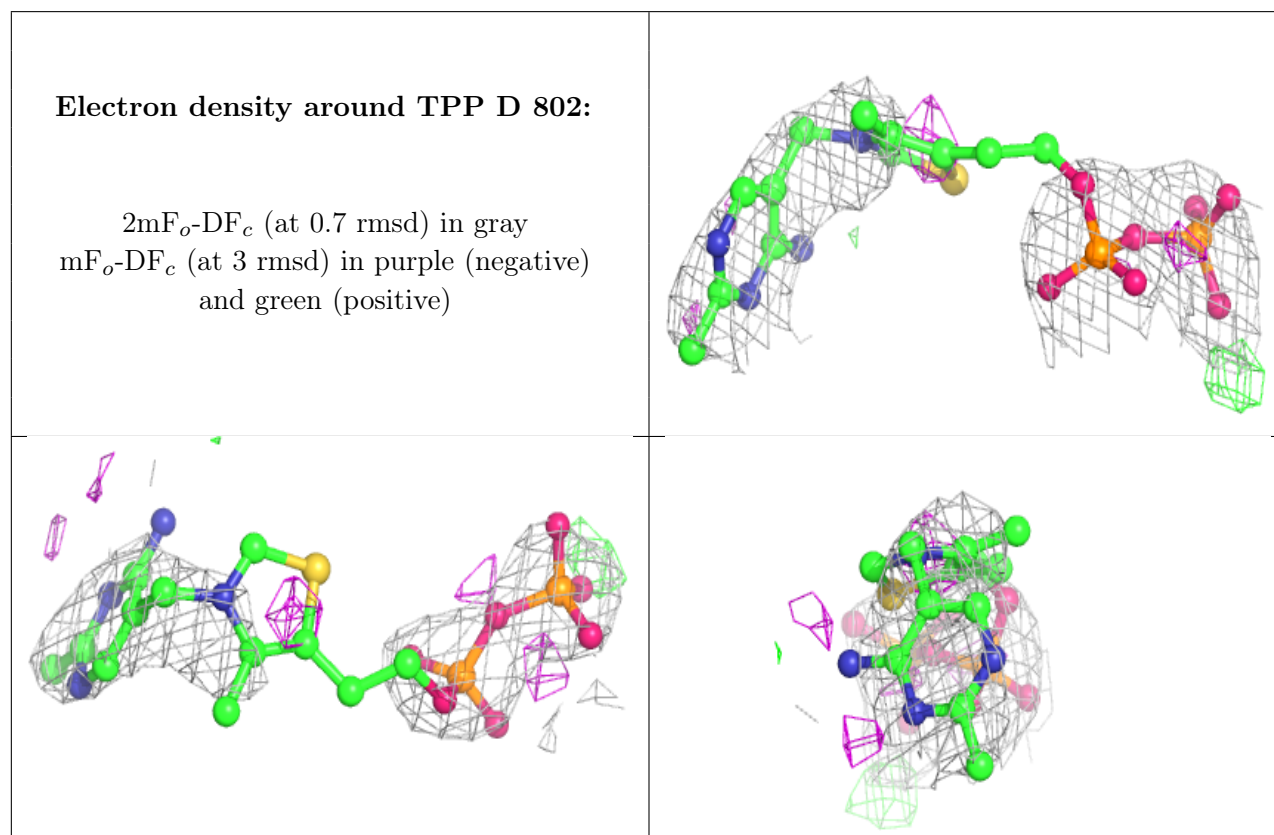
There are no monosaccharides in this entry.

6.4 Ligands [i](#)

In the following table, the Atoms column lists the number of modelled atoms in the group and the number defined in the chemical component dictionary. The B-factors column lists the minimum, median, 95th percentile and maximum values of B factors of atoms in the group. The column labelled ‘Q< 0.9’ lists the number of atoms with occupancy less than 0.9.

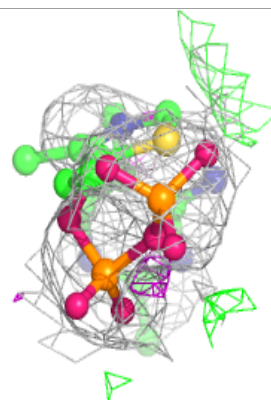
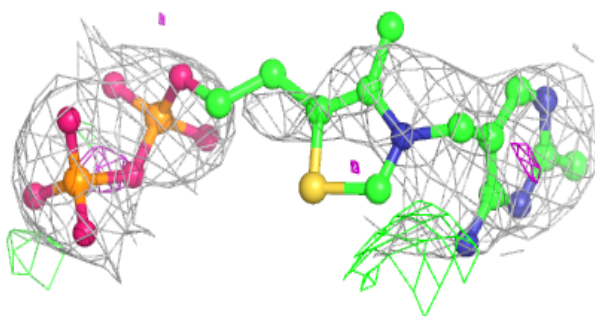
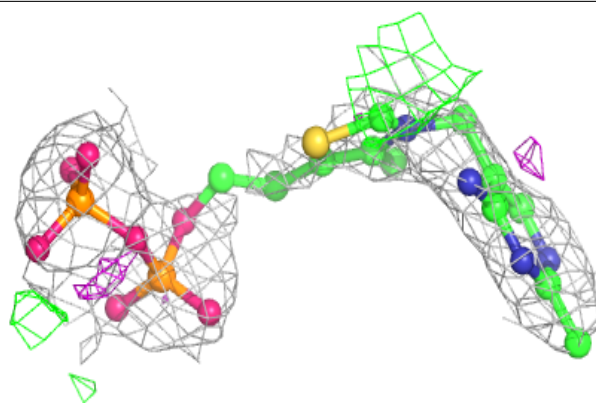
Mol	Type	Chain	Res	Atoms	RSCC	RSR	B-factors(\AA^2)	Q<0.9
2	TPP	D	802	26/26	0.81	0.29	80,110,142,159	0
2	TPP	C	701	26/26	0.87	0.20	69,101,131,161	0
2	TPP	B	802	26/26	0.91	0.17	56,77,92,98	0
2	TPP	A	701	26/26	0.92	0.18	41,73,87,100	0
4	E4P	C	703	12/12	0.93	0.15	72,84,88,89	0
4	E4P	D	801	12/12	0.93	0.16	68,74,78,85	0
4	E4P	A	703	12/12	0.96	0.18	51,69,82,85	0
3	CA	A	702	1/1	0.97	0.04	59,59,59,59	0
3	CA	C	702	1/1	0.97	0.07	73,73,73,73	0
3	CA	D	803	1/1	0.97	0.08	73,73,73,73	0
3	CA	B	803	1/1	0.98	0.04	58,58,58,58	0
4	E4P	B	801	12/12	0.98	0.10	48,54,69,69	0

The following is a graphical depiction of the model fit to experimental electron density of all instances of the Ligand of Interest. In addition, ligands with molecular weight > 250 and outliers as shown on the geometry validation Tables will also be included. Each fit is shown from different orientation to approximate a three-dimensional view.

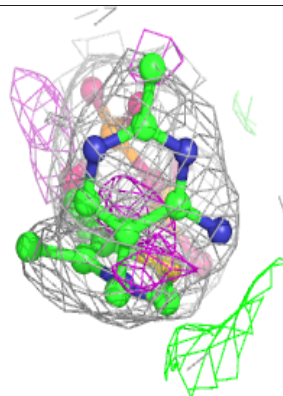
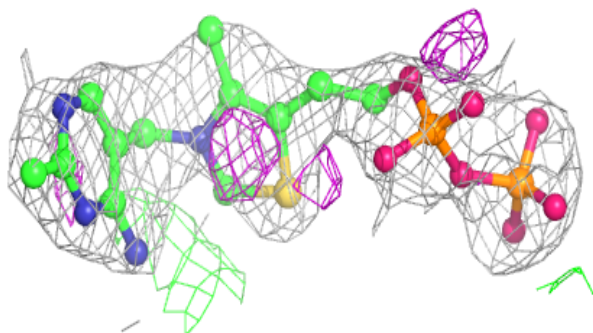
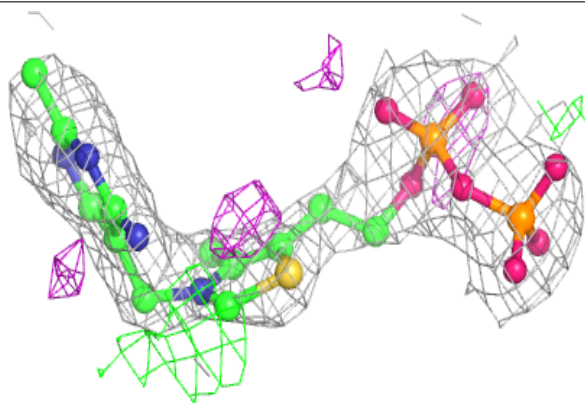


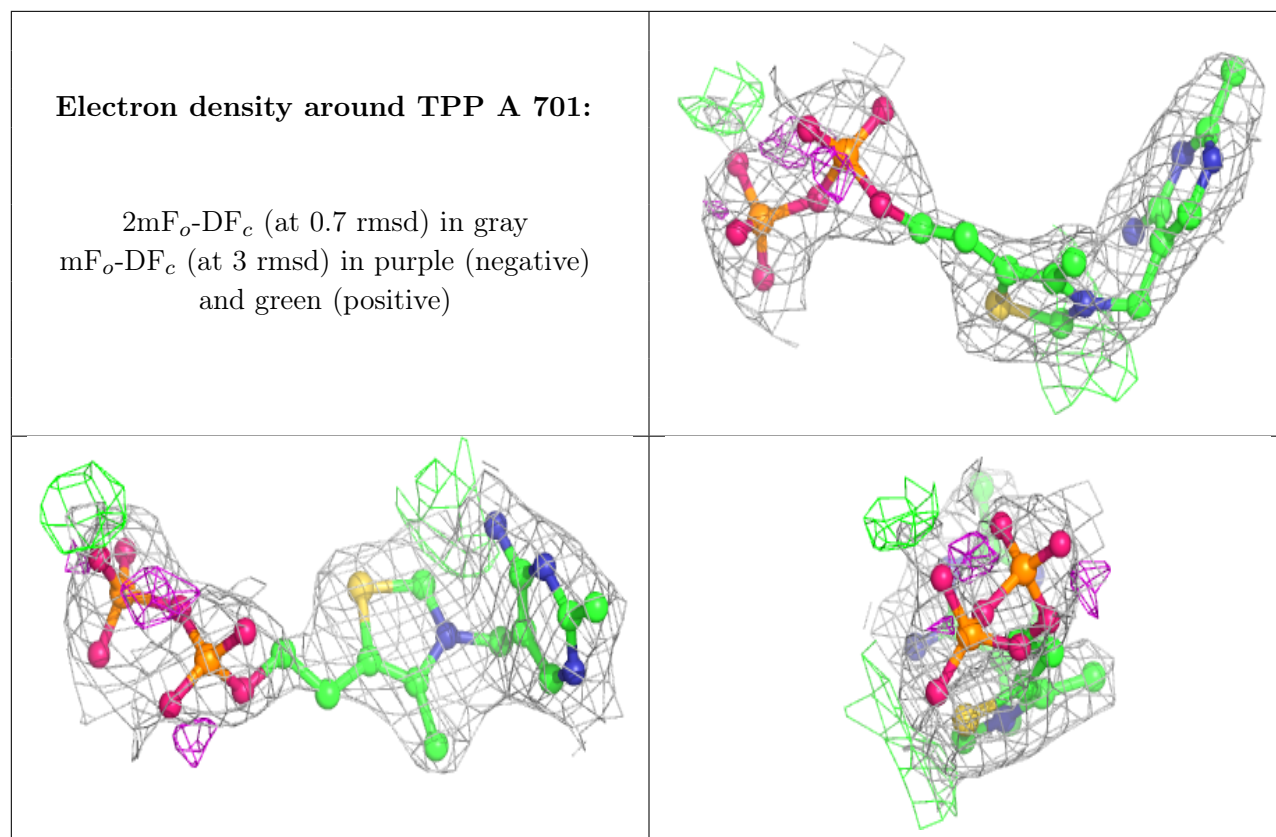
Electron density around TPP C 701:

$2mF_o-DF_c$ (at 0.7 rmsd) in gray
 mF_o-DF_c (at 3 rmsd) in purple (negative)
and green (positive)

**Electron density around TPP B 802:**

$2mF_o-DF_c$ (at 0.7 rmsd) in gray
 mF_o-DF_c (at 3 rmsd) in purple (negative)
and green (positive)





6.5 Other polymers [i](#)

There are no such residues in this entry.