



# Full wwPDB X-ray Structure Validation Report ⓘ

May 16, 2020 – 08:05 am BST

PDB ID : 5WS3  
Title : Crystal structures of human orexin 2 receptor bound to the selective antagonist EMPA determined by serial femtosecond crystallography at SACLA  
Authors : Suno, R.; Kimura, K.; Nakane, T.; Yamashita, K.; Wang, J.; Fujiwara, T.; Yamanaka, Y.; Im, D.; Tsujimoto, H.; Sasanuma, M.; Horita, S.; Hirokawa, T.; Nango, E.; Tono, K.; Kameshima, T.; Hatsui, T.; Joti, Y.; Yabashi, M.; Shimamoto, K.; Yamamoto, M.; Rosenbaum, D.M.; Iwata, S.; Shimamura, T.; Kobayashi, T.  
Deposited on : 2016-12-05  
Resolution : 2.30 Å(reported)

This is a Full wwPDB X-ray Structure Validation Report for a publicly released PDB entry.

We welcome your comments at [validation@mail.wwpdb.org](mailto:validation@mail.wwpdb.org)

A user guide is available at

<https://www.wwpdb.org/validation/2017/XrayValidationReportHelp>  
with specific help available everywhere you see the ⓘ symbol.

---

The following versions of software and data (see [references ⓘ](#)) were used in the production of this report:

MolProbity	:	4.02b-467
Mogul	:	1.8.5 (274361), CSD as541be (2020)
Xtriage (Phenix)	:	1.13
EDS	:	2.11
buster-report	:	1.1.7 (2018)
Percentile statistics	:	20191225.v01 (using entries in the PDB archive December 25th 2019)
Refmac	:	5.8.0158
CCP4	:	7.0.044 (Gargrove)
Ideal geometry (proteins)	:	Engh & Huber (2001)
Ideal geometry (DNA, RNA)	:	Parkinson et al. (1996)
Validation Pipeline (wwPDB-VP)	:	2.11

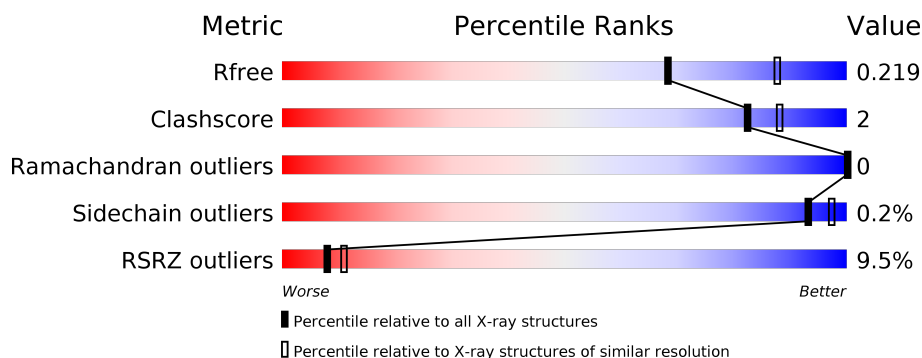
# 1 Overall quality at a glance

The following experimental techniques were used to determine the structure:

## *X-RAY DIFFRACTION*

The reported resolution of this entry is 2.30 Å.

Percentile scores (ranging between 0-100) for global validation metrics of the entry are shown in the following graphic. The table shows the number of entries on which the scores are based.



Metric	Whole archive (#Entries)	Similar resolution (#Entries, resolution range(Å))
$R_{free}$	130704	5042 (2.30-2.30)
Clashscore	141614	5643 (2.30-2.30)
Ramachandran outliers	138981	5575 (2.30-2.30)
Sidechain outliers	138945	5575 (2.30-2.30)
RSRZ outliers	127900	4938 (2.30-2.30)

The table below summarises the geometric issues observed across the polymeric chains and their fit to the electron density. The red, orange, yellow and green segments on the lower bar indicate the fraction of residues that contain outliers for  $\geq 3$ , 2, 1 and 0 types of geometric quality criteria respectively. A grey segment represents the fraction of residues that are not modelled. The numeric value for each fraction is indicated below the corresponding segment, with a dot representing fractions  $\leq 5\%$ . The upper red bar (where present) indicates the fraction of residues that have poor fit to the electron density. The numeric value is given above the bar.

Mol	Chain	Length	Quality of chain
1	A	560	<div> <div>9%</div> <div>84%</div> <div>6%</div> <div>10%</div> </div>

## 2 Entry composition

There are 5 unique types of molecules in this entry. The entry contains 4224 atoms, of which 0 are hydrogens and 0 are deuteriums.

In the tables below, the ZeroOcc column contains the number of atoms modelled with zero occupancy, the AltConf column contains the number of residues with at least one atom in alternate conformation and the Trace column contains the number of residues modelled with at most 2 atoms.

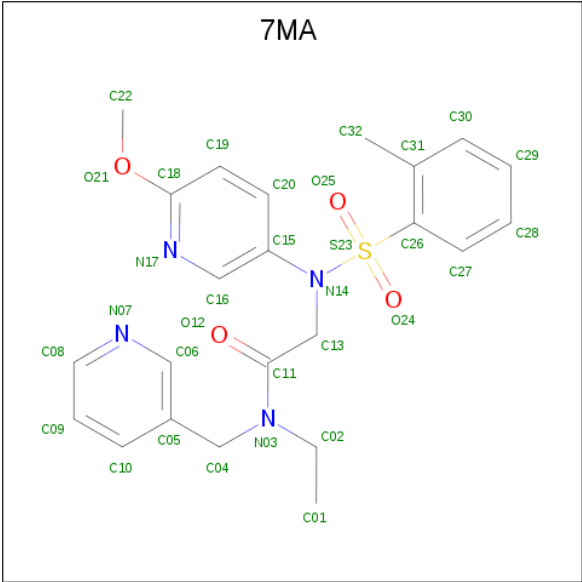
- Molecule 1 is a protein called Orexin receptor type 2, GlgA glycogen synthase, Orexin receptor type 2.

Mol	Chain	Residues	Atoms					ZeroOcc	AltConf	Trace
1	A	506	Total	C	N	O	S	0	4	0
			4091	2677	673	706	35			

There are 18 discrepancies between the modelled and reference sequences:

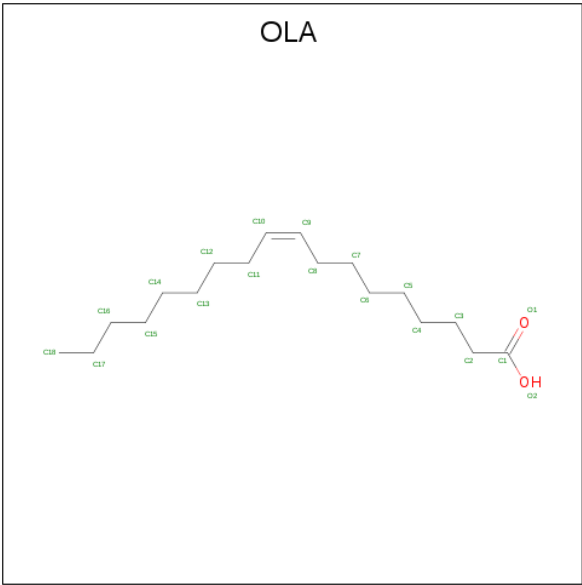
Chain	Residue	Modelled	Actual	Comment	Reference
A	-6	ASP	-	expression tag	UNP O43614
A	-5	TYR	-	expression tag	UNP O43614
A	-4	LYS	-	expression tag	UNP O43614
A	-3	ASP	-	expression tag	UNP O43614
A	-2	ASP	-	expression tag	UNP O43614
A	-1	ASP	-	expression tag	UNP O43614
A	0	ASP	-	expression tag	UNP O43614
A	1	ALA	-	expression tag	UNP O43614
A	2	MET	-	expression tag	UNP O43614
A	308	VAL	ILE	variant	UNP O43614
A	389	HIS	-	expression tag	UNP O43614
A	390	HIS	-	expression tag	UNP O43614
A	391	HIS	-	expression tag	UNP O43614
A	392	HIS	-	expression tag	UNP O43614
A	393	HIS	-	expression tag	UNP O43614
A	394	HIS	-	expression tag	UNP O43614
A	395	HIS	-	expression tag	UNP O43614
A	396	HIS	-	expression tag	UNP O43614

- Molecule 2 is N-ethyl-2-[(6-methoxypyridin-3-yl)-(2-methylphenyl)sulfonyl-amino]-N-(pyridin-3-ylmethyl)ethanamide (three-letter code: 7MA) (formula: C<sub>23</sub>H<sub>26</sub>N<sub>4</sub>O<sub>4</sub>S).



Mol	Chain	Residues	Atoms					ZeroOcc	AltConf
2	A	1	Total	C	N	O	S	0	0
			32	23	4	4	1		

- Molecule 3 is OLEIC ACID (three-letter code: OLA) (formula: C<sub>18</sub>H<sub>34</sub>O<sub>2</sub>).



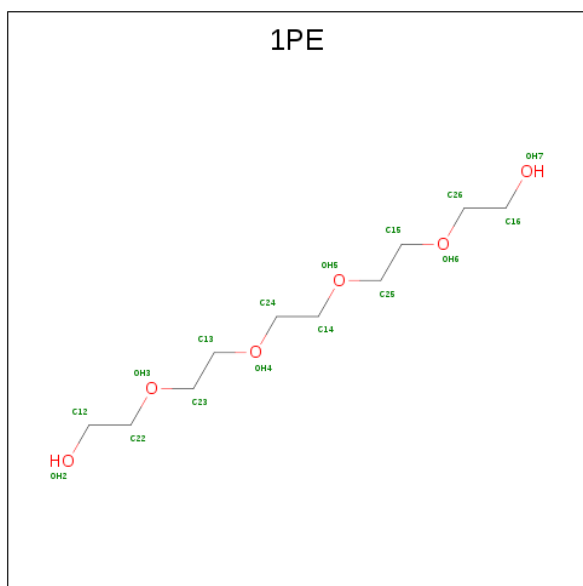
Mol	Chain	Residues	Atoms			ZeroOcc	AltConf
3	A	1	Total	C	O	0	0
			15	13	2		
3	A	1	Total	C	O	0	0
			16	14	2		
3	A	1	Total	C	O	0	0
			15	13	2		

Continued on next page...

*Continued from previous page...*

Mol	Chain	Residues	Atoms			ZeroOcc	AltConf
3	A	1	Total	C	O	0	0
			17	15	2		

- Molecule 4 is PENTAETHYLENE GLYCOL (three-letter code: 1PE) (formula:  $C_{10}H_{22}O_6$ ).



Mol	Chain	Residues	Atoms			ZeroOcc	AltConf
4	A	1	Total	C	O	0	0
			13	8	5		
4	A	1	Total	C	O	0	0
			13	8	5		

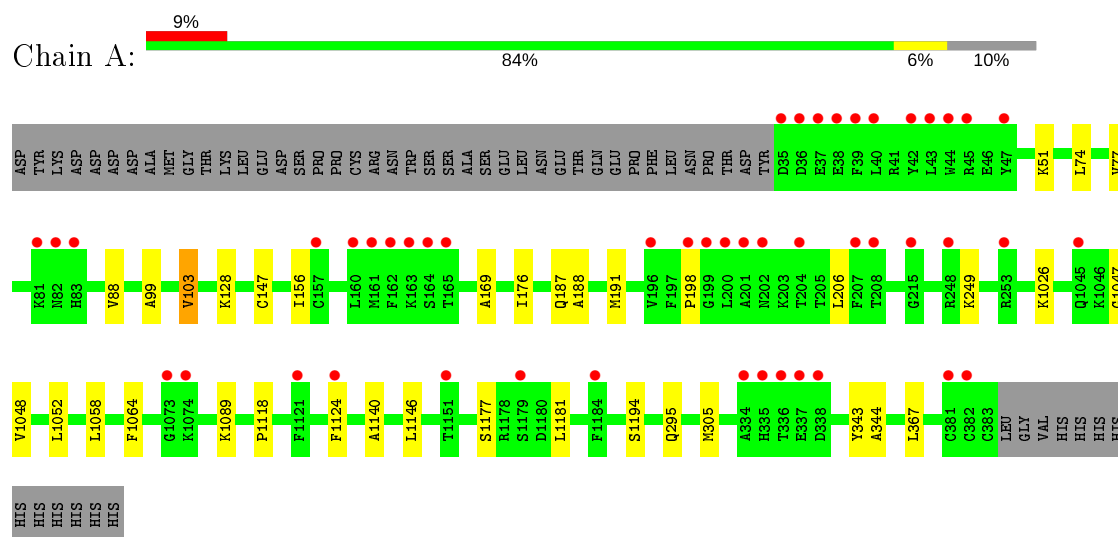
- Molecule 5 is water.

Mol	Chain	Residues	Atoms		ZeroOcc	AltConf
5	A	12	Total	O	0	0
			12	12		

### 3 Residue-property plots [i](#)

These plots are drawn for all protein, RNA and DNA chains in the entry. The first graphic for a chain summarises the proportions of the various outlier classes displayed in the second graphic. The second graphic shows the sequence view annotated by issues in geometry and electron density. Residues are color-coded according to the number of geometric quality criteria for which they contain at least one outlier: green = 0, yellow = 1, orange = 2 and red = 3 or more. A red dot above a residue indicates a poor fit to the electron density ( $\text{RSRZ} > 2$ ). Stretches of 2 or more consecutive residues without any outlier are shown as a green connector. Residues present in the sample, but not in the model, are shown in grey.

- Molecule 1: Orexin receptor type 2,GlgA glycogen synthase,Orexin receptor type 2



## 4 Data and refinement statistics

Property	Value	Source
Space group	C 1 2 1	Depositor
Cell constants a, b, c, $\alpha$ , $\beta$ , $\gamma$	97.51Å 75.98Å 96.10Å 90.00° 112.30° 90.00°	Depositor
Resolution (Å)	45.11 – 2.30 45.11 – 2.30	Depositor EDS
% Data completeness (in resolution range)	99.9 (45.11-2.30) 100.0 (45.11-2.30)	Depositor EDS
$R_{merge}$	(Not available)	Depositor
$R_{sym}$	(Not available)	Depositor
$\langle I/\sigma(I) \rangle$ <sup>1</sup>	1.48 (at 2.29Å)	Xtriage
Refinement program	PHENIX (dev_2747: ???)	Depositor
R, $R_{free}$	0.199 , 0.219 0.197 , 0.219	Depositor DCC
$R_{free}$ test set	1440 reflections (4.97%)	wwPDB-VP
Wilson B-factor (Å <sup>2</sup> )	61.7	Xtriage
Anisotropy	0.408	Xtriage
Bulk solvent $k_{sol}$ (e/Å <sup>3</sup> ), $B_{sol}$ (Å <sup>2</sup> )	0.35 , 80.0	EDS
L-test for twinning <sup>2</sup>	$\langle  L  \rangle = 0.47$ , $\langle L^2 \rangle = 0.30$	Xtriage
Estimated twinning fraction	No twinning to report.	Xtriage
$F_o, F_c$ correlation	0.96	EDS
Total number of atoms	4224	wwPDB-VP
Average B, all atoms (Å <sup>2</sup> )	81.0	wwPDB-VP

Xtriage's analysis on translational NCS is as follows: *The largest off-origin peak in the Patterson function is 5.23% of the height of the origin peak. No significant pseudotranslation is detected.*

<sup>1</sup>Intensities estimated from amplitudes.

<sup>2</sup>Theoretical values of  $\langle |L| \rangle$ ,  $\langle L^2 \rangle$  for acentric reflections are 0.5, 0.333 respectively for untwinned datasets, and 0.375, 0.2 for perfectly twinned datasets.

## 5 Model quality

### 5.1 Standard geometry

Bond lengths and bond angles in the following residue types are not validated in this section: OLA, 7MA, 1PE

The Z score for a bond length (or angle) is the number of standard deviations the observed value is removed from the expected value. A bond length (or angle) with  $|Z| > 5$  is considered an outlier worth inspection. RMSZ is the root-mean-square of all Z scores of the bond lengths (or angles).

Mol	Chain	Bond lengths		Bond angles	
		RMSZ	$\# Z  > 5$	RMSZ	$\# Z  > 5$
1	A	0.33	0/4188	0.47	0/5672

There are no bond length outliers.

There are no bond angle outliers.

There are no chirality outliers.

There are no planarity outliers.

### 5.2 Too-close contacts

In the following table, the Non-H and H(model) columns list the number of non-hydrogen atoms and hydrogen atoms in the chain respectively. The H(added) column lists the number of hydrogen atoms added and optimized by MolProbity. The Clashes column lists the number of clashes within the asymmetric unit, whereas Symm-Clashes lists symmetry related clashes.

Mol	Chain	Non-H	H(model)	H(added)	Clashes	Symm-Clashes
1	A	4091	0	4178	21	0
2	A	32	0	0	0	0
3	A	63	0	86	1	0
4	A	26	0	34	1	0
5	A	12	0	0	0	0
All	All	4224	0	4298	21	0

The all-atom clashscore is defined as the number of clashes found per 1000 atoms (including hydrogen atoms). The all-atom clashscore for this structure is 2.

All (21) close contacts within the same asymmetric unit are listed below, sorted by their clash magnitude.



Atom-1	Atom-2	Interatomic distance (Å)	Clash overlap (Å)
1:A:344:ALA:HB1	3:A:2005:OLA:H21	1.79	0.64
1:A:1140:ALA:HB1	1:A:1146:LEU:HD13	1.85	0.58
1:A:187:GLN:O	1:A:191:MET:HG2	2.07	0.55
1:A:1047:GLY:HA3	1:A:1118:PRO:O	2.07	0.53
1:A:1194:SER:O	1:A:295:GLN:HG2	2.09	0.52
1:A:249:LYS:HE3	1:A:1124:PHE:HE1	1.75	0.51
1:A:249:LYS:HE3	1:A:1124:PHE:CE1	2.46	0.51
1:A:74:LEU:HA	1:A:77:VAL:HG22	1.93	0.50
1:A:88:VAL:HG13	1:A:169:ALA:HB2	1.94	0.49
1:A:1177:SER:HA	1:A:1181:LEU:HD11	1.95	0.48
1:A:128:LYS:HD2	1:A:188:ALA:O	2.15	0.47
1:A:1058:LEU:O	1:A:1064:PHE:HB2	2.15	0.47
1:A:198:PRO:HD2	1:A:206:LEU:HA	1.97	0.45
1:A:1026:LYS:HE2	4:A:2006:1PE:H241	1.99	0.45
1:A:51:LYS:HE3	1:A:343:TYR:CE2	2.52	0.45
1:A:99:ALA:O	1:A:103:VAL:HG22	2.17	0.45
1:A:156:ILE:O	1:A:249:LYS:HE2	2.18	0.44
1:A:1048:VAL:O	1:A:1052:LEU:HG	2.18	0.43
1:A:305:MET:HG3	1:A:367:LEU:HB2	2.01	0.42
1:A:1089:LYS:HE3	1:A:1089:LYS:HB2	1.77	0.42
1:A:147:CYS:SG	1:A:176:ILE:HD11	2.60	0.41

There are no symmetry-related clashes.

## 5.3 Torsion angles [i](#)

### 5.3.1 Protein backbone [i](#)

In the following table, the Percentiles column shows the percent Ramachandran outliers of the chain as a percentile score with respect to all X-ray entries followed by that with respect to entries of similar resolution.

The Analysed column shows the number of residues for which the backbone conformation was analysed, and the total number of residues.

Mol	Chain	Analysed	Favoured	Allowed	Outliers	Percentiles	
1	A	508/560 (91%)	499 (98%)	9 (2%)	0	100	100

There are no Ramachandran outliers to report.

### 5.3.2 Protein sidechains [i](#)

In the following table, the Percentiles column shows the percent sidechain outliers of the chain as a percentile score with respect to all X-ray entries followed by that with respect to entries of similar resolution.

The Analysed column shows the number of residues for which the sidechain conformation was analysed, and the total number of residues.

Mol	Chain	Analysed	Rotameric	Outliers	Percentiles	
1	A	448/494 (91%)	447 (100%)	1 (0%)	93	97

All (1) residues with a non-rotameric sidechain are listed below:

Mol	Chain	Res	Type
1	A	103	VAL

Some sidechains can be flipped to improve hydrogen bonding and reduce clashes. There are no such sidechains identified.

### 5.3.3 RNA [i](#)

There are no RNA molecules in this entry.

## 5.4 Non-standard residues in protein, DNA, RNA chains [i](#)

There are no non-standard protein/DNA/RNA residues in this entry.

## 5.5 Carbohydrates [i](#)

There are no carbohydrates in this entry.

## 5.6 Ligand geometry [i](#)

7 ligands are modelled in this entry.

In the following table, the Counts columns list the number of bonds (or angles) for which Mogul statistics could be retrieved, the number of bonds (or angles) that are observed in the model and the number of bonds (or angles) that are defined in the Chemical Component Dictionary. The Link column lists molecule types, if any, to which the group is linked. The Z score for a bond length (or angle) is the number of standard deviations the observed value is removed from the expected value. A bond length (or angle) with  $|Z| > 2$  is considered an outlier worth inspection. RMSZ is the root-mean-square of all Z scores of the bond lengths (or angles).

Mol	Type	Chain	Res	Link	Bond lengths			Bond angles		
					Counts	RMSZ	# Z  > 2	Counts	RMSZ	# Z  > 2
3	OLA	A	2004	-	11,14,19	0.88	1 (9%)	10,14,19	0.52	0
4	1PE	A	2007	-	12,12,15	0.53	0	11,11,14	0.64	0
4	1PE	A	2006	-	12,12,15	0.64	0	11,11,14	0.22	0
3	OLA	A	2003	-	12,15,19	0.80	1 (8%)	11,15,19	0.78	0
2	7MA	A	2001	-	34,34,34	2.82	8 (23%)	45,47,47	1.99	12 (26%)
3	OLA	A	2005	-	13,16,19	0.79	1 (7%)	12,16,19	0.63	0
3	OLA	A	2002	-	11,14,19	0.89	1 (9%)	10,14,19	0.52	0

In the following table, the Chirals column lists the number of chiral outliers, the number of chiral centers analysed, the number of these observed in the model and the number defined in the Chemical Component Dictionary. Similar counts are reported in the Torsion and Rings columns. '-' means no outliers of that kind were identified.

Mol	Type	Chain	Res	Link	Chirals	Torsions	Rings
3	OLA	A	2004	-	-	8/10/12/17	-
4	1PE	A	2007	-	-	1/10/10/13	-
4	1PE	A	2006	-	-	1/10/10/13	-
3	OLA	A	2003	-	-	6/11/13/17	-
2	7MA	A	2001	-	-	2/32/32/32	0/3/3/3
3	OLA	A	2005	-	-	6/12/14/17	-
3	OLA	A	2002	-	-	7/10/12/17	-

All (12) bond length outliers are listed below:

Mol	Chain	Res	Type	Atoms	Z	Observed(Å)	Ideal(Å)
2	A	2001	7MA	O24-S23	8.92	1.53	1.43
2	A	2001	7MA	O25-S23	7.45	1.51	1.43
2	A	2001	7MA	C15-N14	-6.60	1.35	1.44
2	A	2001	7MA	C04-C05	-5.66	1.41	1.51
2	A	2001	7MA	C32-C31	-5.37	1.40	1.51
3	A	2002	OLA	C10-C9	2.83	1.48	1.31
3	A	2004	OLA	C10-C9	2.80	1.48	1.31
3	A	2005	OLA	C10-C9	2.72	1.47	1.31
3	A	2003	OLA	C10-C9	2.70	1.47	1.31
2	A	2001	7MA	C06-N07	2.68	1.40	1.34
2	A	2001	7MA	S23-N14	-2.49	1.61	1.65
2	A	2001	7MA	C16-N17	2.44	1.39	1.34

All (12) bond angle outliers are listed below:

Mol	Chain	Res	Type	Atoms	Z	Observed(°)	Ideal(°)
2	A	2001	7MA	O25-S23-O24	-6.51	108.97	119.52
2	A	2001	7MA	C22-O21-C18	-4.32	110.59	117.36
2	A	2001	7MA	O25-S23-N14	3.67	111.05	106.71
2	A	2001	7MA	C16-N17-C18	3.38	119.60	116.63
2	A	2001	7MA	C16-C15-N14	-3.30	115.18	120.14
2	A	2001	7MA	C13-N14-S23	-3.27	111.65	117.23
2	A	2001	7MA	C20-C15-N14	3.06	124.73	120.16
2	A	2001	7MA	C19-C18-N17	-2.69	120.86	124.87
2	A	2001	7MA	C30-C31-C26	2.66	119.22	116.27
2	A	2001	7MA	C20-C19-C18	2.16	120.51	117.72
2	A	2001	7MA	C15-N14-S23	-2.15	113.42	117.73
2	A	2001	7MA	C32-C31-C30	-2.10	116.22	120.31

There are no chirality outliers.

All (31) torsion outliers are listed below:

Mol	Chain	Res	Type	Atoms
3	A	2004	OLA	C1-C2-C3-C4
3	A	2004	OLA	C10-C11-C12-C13
3	A	2003	OLA	C1-C2-C3-C4
3	A	2005	OLA	C1-C2-C3-C4
3	A	2002	OLA	C1-C2-C3-C4
3	A	2004	OLA	C11-C10-C9-C8
3	A	2002	OLA	C11-C10-C9-C8
3	A	2005	OLA	C11-C10-C9-C8
3	A	2003	OLA	C3-C4-C5-C6
2	A	2001	7MA	C15-N14-S23-O25
3	A	2005	OLA	C3-C4-C5-C6
3	A	2004	OLA	C3-C4-C5-C6
3	A	2004	OLA	C4-C5-C6-C7
3	A	2003	OLA	C5-C6-C7-C8
3	A	2002	OLA	C4-C5-C6-C7
3	A	2003	OLA	C11-C10-C9-C8
3	A	2004	OLA	C5-C6-C7-C8
3	A	2005	OLA	C6-C7-C8-C9
3	A	2003	OLA	C9-C10-C11-C12
3	A	2002	OLA	C9-C10-C11-C12
3	A	2004	OLA	C9-C10-C11-C12
4	A	2006	1PE	C24-C14-OH5-C25
4	A	2007	1PE	OH5-C14-C24-OH4
3	A	2004	OLA	C7-C8-C9-C10
3	A	2005	OLA	C7-C8-C9-C10
3	A	2005	OLA	C9-C10-C11-C12

*Continued on next page...*

*Continued from previous page...*

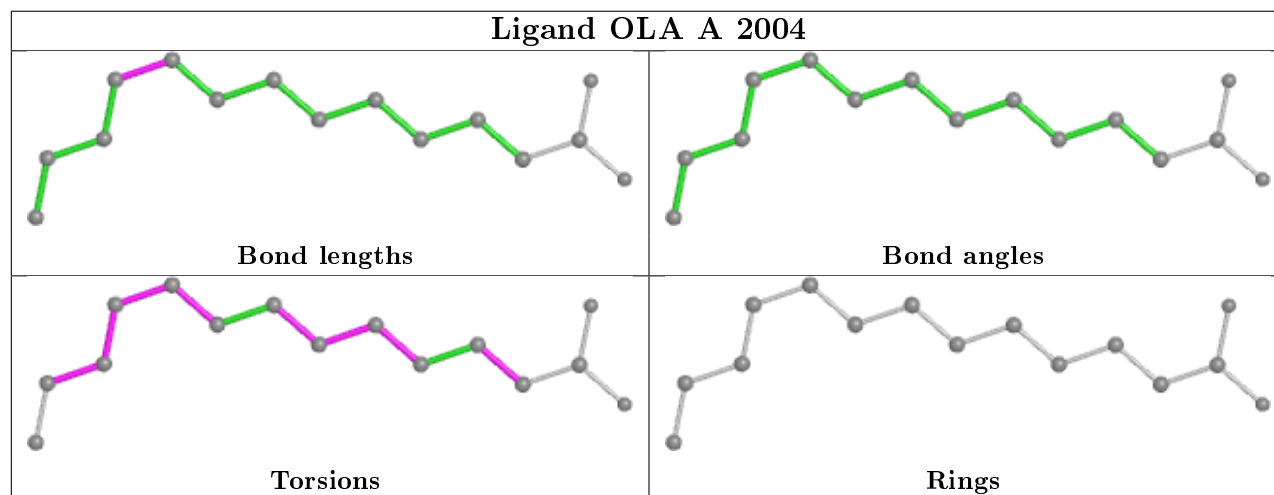
Mol	Chain	Res	Type	Atoms
3	A	2002	OLA	C7-C8-C9-C10
3	A	2002	OLA	C6-C7-C8-C9
3	A	2002	OLA	C3-C4-C5-C6
3	A	2003	OLA	C4-C5-C6-C7
2	A	2001	7MA	C11-C13-N14-S23

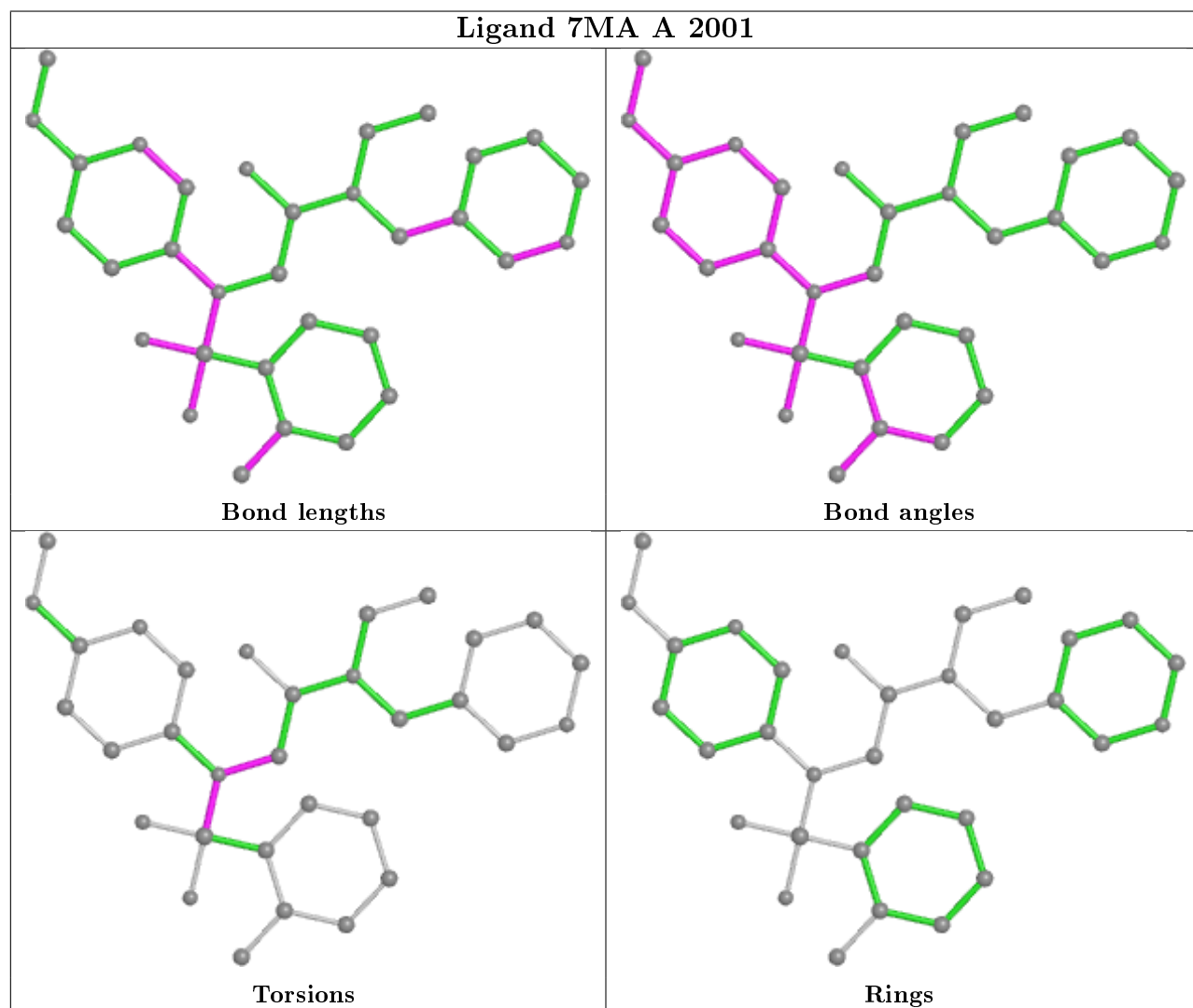
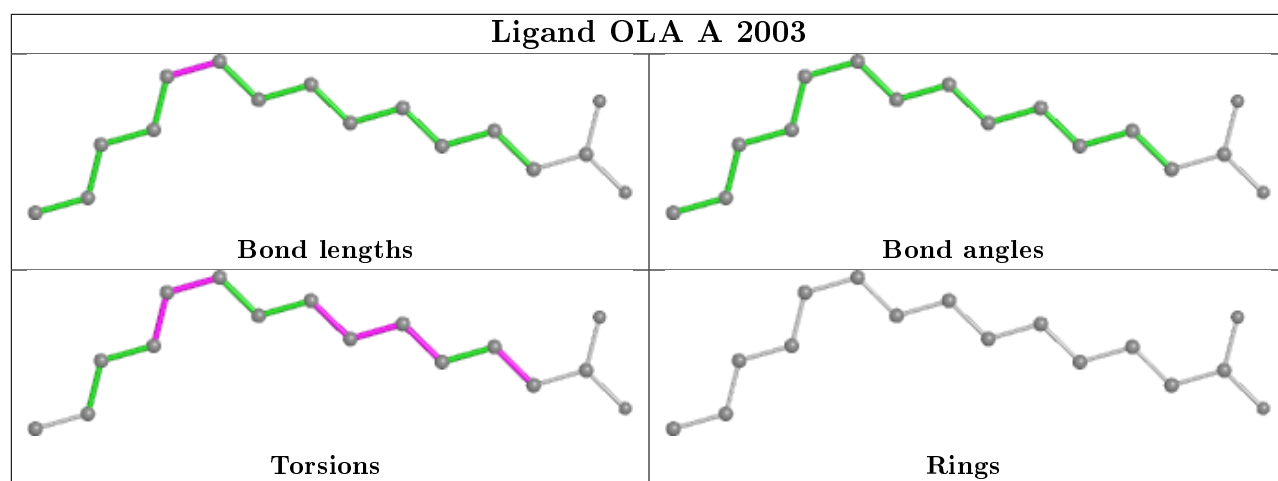
There are no ring outliers.

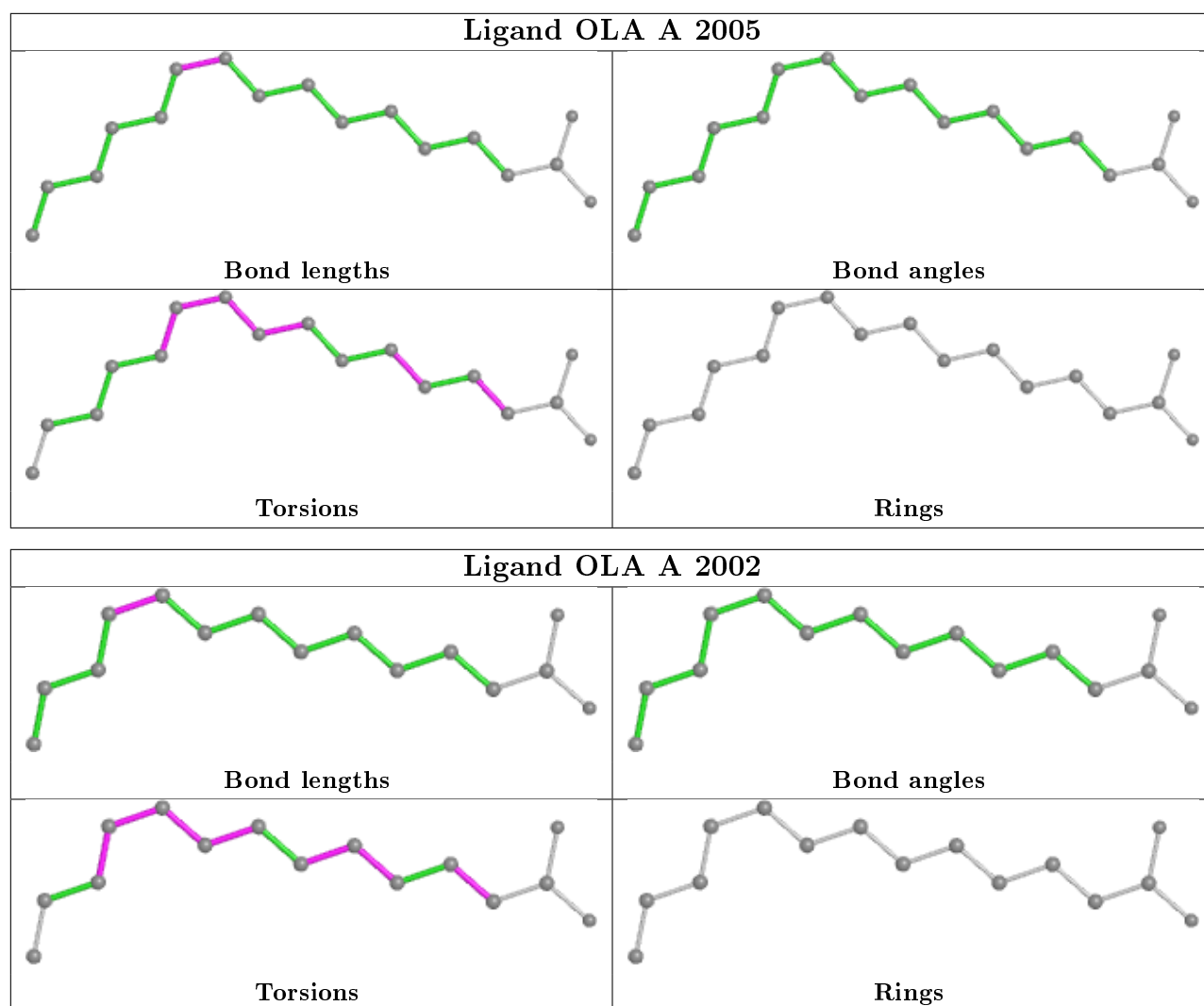
2 monomers are involved in 2 short contacts:

Mol	Chain	Res	Type	Clashes	Symm-Clashes
4	A	2006	1PE	1	0
3	A	2005	OLA	1	0

The following is a two-dimensional graphical depiction of Mogul quality analysis of bond lengths, bond angles, torsion angles, and ring geometry for all instances of the Ligand of Interest. In addition, ligands with molecular weight > 250 and outliers as shown on the validation Tables will also be included. For torsion angles, if less than 5% of the Mogul distribution of torsion angles is within 10 degrees of the torsion angle in question, then that torsion angle is considered an outlier. Any bond that is central to one or more torsion angles identified as an outlier by Mogul will be highlighted in the graph. For rings, the root-mean-square deviation (RMSD) between the ring in question and similar rings identified by Mogul is calculated over all ring torsion angles. If the average RMSD is greater than 60 degrees and the minimal RMSD between the ring in question and any Mogul-identified rings is also greater than 60 degrees, then that ring is considered an outlier. The outliers are highlighted in purple. The color gray indicates Mogul did not find sufficient equivalents in the CSD to analyse the geometry.







## 5.7 Other polymers ⓘ

There are no such residues in this entry.

## 5.8 Polymer linkage issues ⓘ

There are no chain breaks in this entry.

## 6 Fit of model and data

### 6.1 Protein, DNA and RNA chains

In the following table, the column labelled ‘#RSRZ> 2’ contains the number (and percentage) of RSRZ outliers, followed by percent RSRZ outliers for the chain as percentile scores relative to all X-ray entries and entries of similar resolution. The OWAB column contains the minimum, median, 95<sup>th</sup> percentile and maximum values of the occupancy-weighted average B-factor per residue. The column labelled ‘Q< 0.9’ lists the number of (and percentage) of residues with an average occupancy less than 0.9.

Mol	Chain	Analysed	<RSRZ>	#RSRZ>2		OWAB(Å <sup>2</sup> )	Q<0.9
1	A	506/560 (90%)	1.06	48 (9%)	8 11	57, 73, 136, 176	0

All (48) RSRZ outliers are listed below:

Mol	Chain	Res	Type	RSRZ
1	A	382	CYS	11.2
1	A	35	ASP	9.5
1	A	381	CYS	7.3
1	A	337	GLU	6.3
1	A	1124	PHE	6.2
1	A	37	GLU	5.9
1	A	335	HIS	5.6
1	A	164	SER	5.5
1	A	200	LEU	5.4
1	A	338	ASP	5.0
1	A	40	LEU	4.9
1	A	43	LEU	4.8
1	A	38	GLU	4.7
1	A	39	PHE	4.5
1	A	45	ARG	4.4
1	A	201	ALA	4.4
1	A	336	THR	4.3
1	A	36	ASP	4.0
1	A	47	TYR	4.0
1	A	42	TYR	3.9
1	A	163	LYS	3.5
1	A	204	THR	3.3
1	A	1074	LYS	3.3
1	A	202	ASN	3.2
1	A	82	ASN	3.2
1	A	198	PRO	3.2
1	A	160	LEU	3.2

*Continued on next page...*



*Continued from previous page...*

Mol	Chain	Res	Type	RSRZ
1	A	157[A]	CYS	2.8
1	A	1184	PHE	2.7
1	A	1151	THR	2.7
1	A	1179[A]	SER	2.6
1	A	161	MET	2.6
1	A	81	LYS	2.6
1	A	83	HIS	2.5
1	A	334	ALA	2.5
1	A	165	THR	2.5
1	A	199	GLY	2.5
1	A	1121	PHE	2.4
1	A	207	PHE	2.4
1	A	215	GLY	2.3
1	A	44	TRP	2.3
1	A	196	VAL	2.3
1	A	1073	GLY	2.2
1	A	253	ARG	2.2
1	A	162	PHE	2.2
1	A	1045	GLN	2.2
1	A	248	ARG	2.2
1	A	208	THR	2.0

## 6.2 Non-standard residues in protein, DNA, RNA chains [i](#)

There are no non-standard protein/DNA/RNA residues in this entry.

## 6.3 Carbohydrates [i](#)

There are no carbohydrates in this entry.

## 6.4 Ligands [i](#)

In the following table, the Atoms column lists the number of modelled atoms in the group and the number defined in the chemical component dictionary. The B-factors column lists the minimum, median, 95<sup>th</sup> percentile and maximum values of B factors of atoms in the group. The column labelled 'Q< 0.9' lists the number of atoms with occupancy less than 0.9.

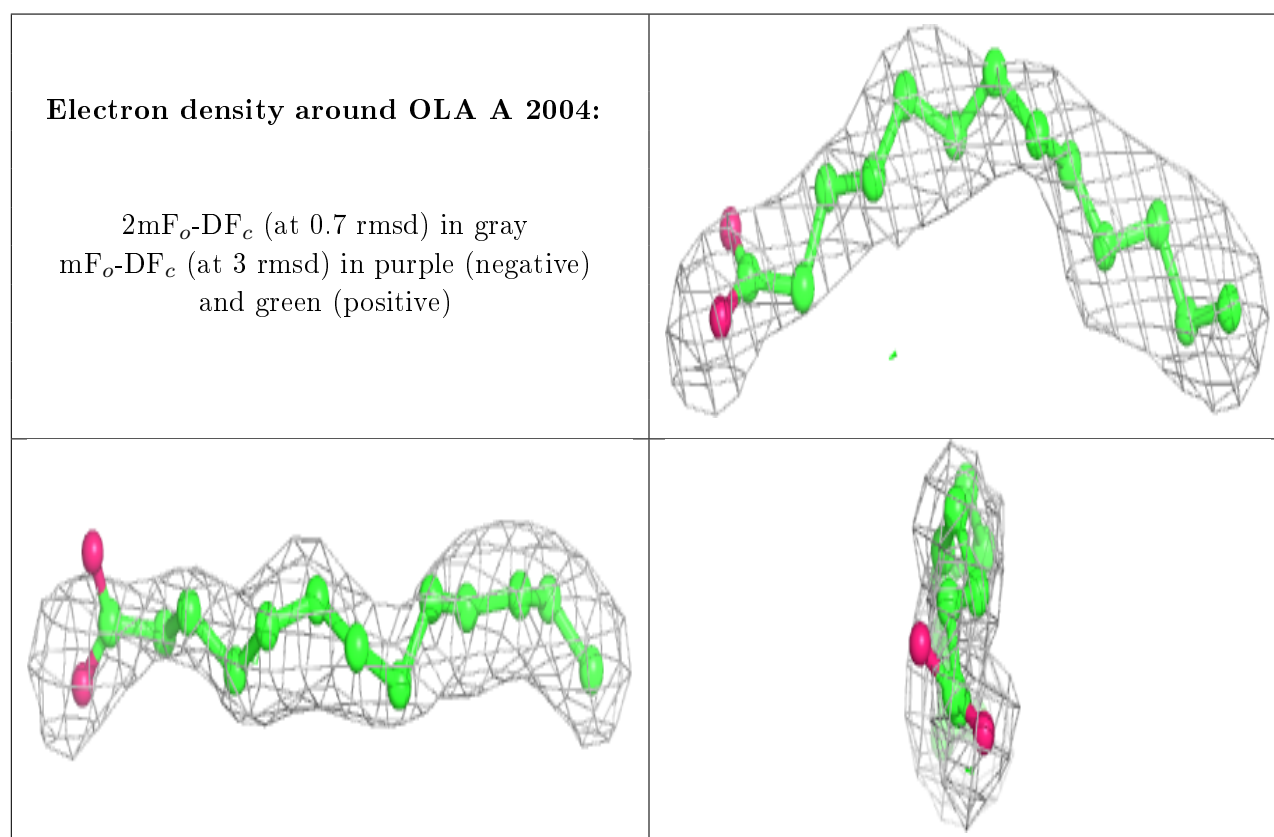
Mol	Type	Chain	Res	Atoms	RSCC	RSR	B-factors( $\text{\AA}^2$ )	Q<0.9
4	1PE	A	2006	13/16	0.46	0.30	107,114,122,123	0
3	OLA	A	2004	15/20	0.64	0.26	74,97,116,117	0

*Continued on next page...*

*Continued from previous page...*

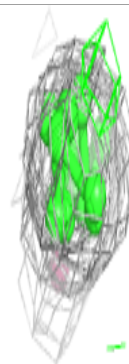
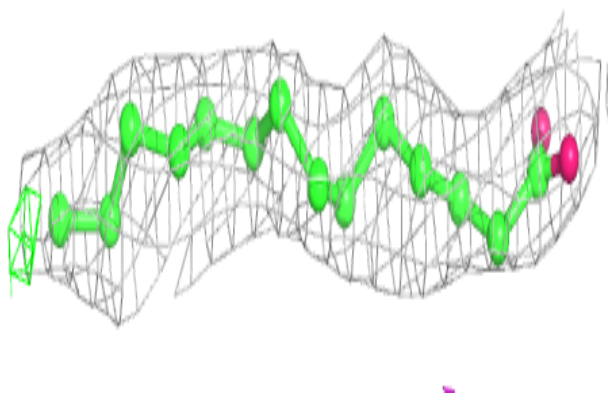
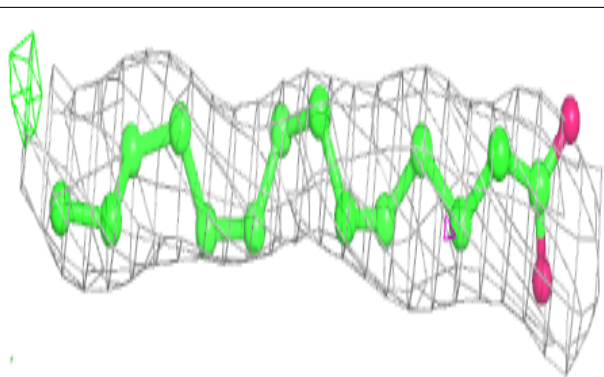
Mol	Type	Chain	Res	Atoms	RSCC	RSR	B-factors( $\text{\AA}^2$ )	Q<0.9
3	OLA	A	2003	16/20	0.74	0.21	83,88,103,104	0
3	OLA	A	2005	17/20	0.76	0.28	83,90,113,113	0
4	1PE	A	2007	13/16	0.79	0.24	100,107,110,110	0
3	OLA	A	2002	15/20	0.79	0.26	84,89,105,106	0
2	7MA	A	2001	32/32	0.91	0.23	47,58,64,65	0

The following is a graphical depiction of the model fit to experimental electron density of all instances of the Ligand of Interest. In addition, ligands with molecular weight > 250 and outliers as shown on the geometry validation Tables will also be included. Each fit is shown from different orientation to approximate a three-dimensional view.

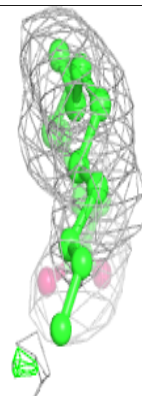
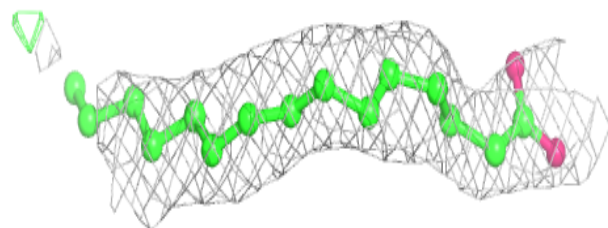
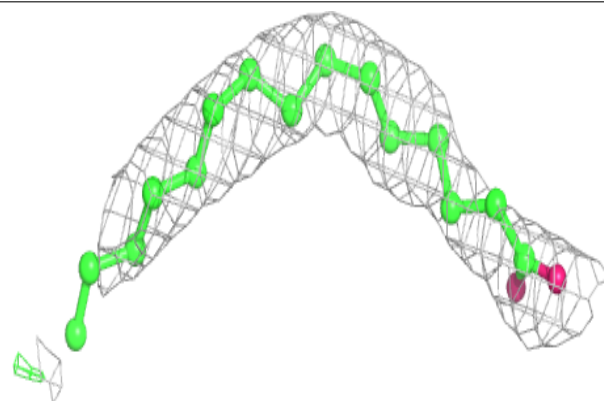


**Electron density around OLA A 2003:**

$2mF_o-DF_c$  (at 0.7 rmsd) in gray  
 $mF_o-DF_c$  (at 3 rmsd) in purple (negative)  
and green (positive)

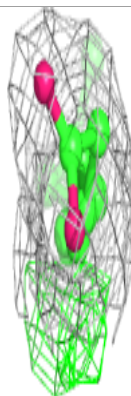
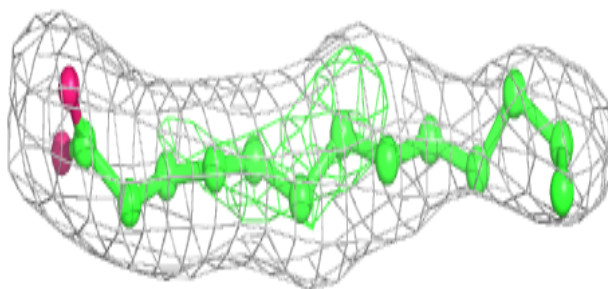
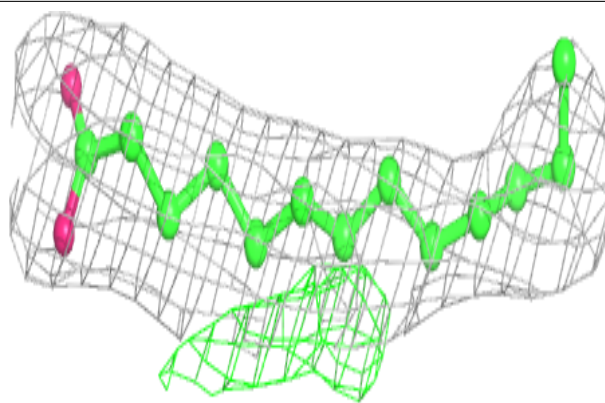
**Electron density around OLA A 2005:**

$2mF_o-DF_c$  (at 0.7 rmsd) in gray  
 $mF_o-DF_c$  (at 3 rmsd) in purple (negative)  
and green (positive)



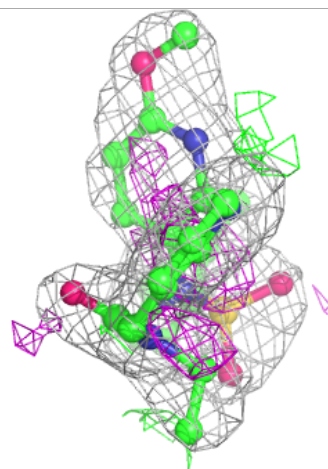
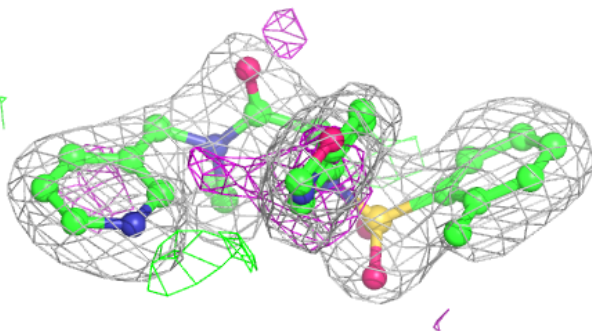
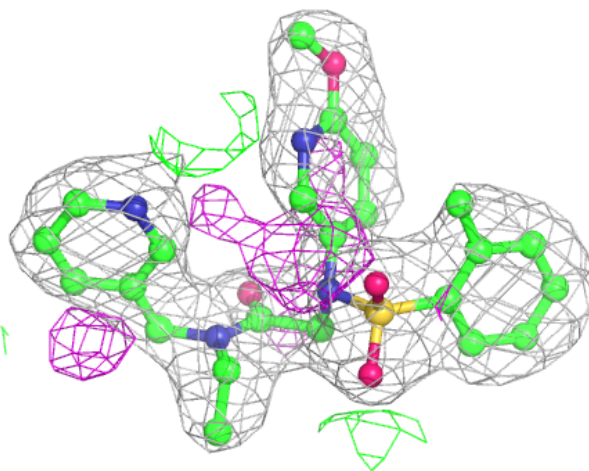
**Electron density around OLA A 2002:**

$2mF_o-DF_c$  (at 0.7 rmsd) in gray  
 $mF_o-DF_c$  (at 3 rmsd) in purple (negative)  
and green (positive)



**Electron density around 7MA A 2001:**

$2mF_o-DF_c$  (at 0.7 rmsd) in gray  
 $mF_o-DF_c$  (at 3 rmsd) in purple (negative)  
and green (positive)



## 6.5 Other polymers [i](#)

There are no such residues in this entry.