



# Full wwPDB X-ray Structure Validation Report ⓘ

May 13, 2020 – 01:48 am BST

PDB ID : 2WTH  
Title : Low resolution 3D structure of C.elegans globin-like protein (GLB-1): P3121 crystal form  
Authors : Geuens, E.; Hoogewijs, D.; Nardini, M.; Vinck, E.; Pesce, A.; Kiger, L.; Fago, A.; Tilleman, L.; De Henau, S.; Marden, M.; Weber, R.E.; Van Doorslaer, S.; Vanfleteren, J.; Moens, L.; Bolognesi, M.; Dewilde, S.  
Deposited on : 2009-09-16  
Resolution : 2.80 Å(reported)

This is a Full wwPDB X-ray Structure Validation Report for a publicly released PDB entry.

We welcome your comments at [validation@mail.wwpdb.org](mailto:validation@mail.wwpdb.org)

A user guide is available at

<https://www.wwpdb.org/validation/2017/XrayValidationReportHelp>

with specific help available everywhere you see the ⓘ symbol.

---

The following versions of software and data (see [references ⓘ](#)) were used in the production of this report:

MolProbity : 4.02b-467  
Mogul : 1.8.5 (274361), CSD as541be (2020)  
Xtriage (Phenix) : 1.13  
EDS : 2.11  
buster-report : 1.1.7 (2018)  
Percentile statistics : 20191225.v01 (using entries in the PDB archive December 25th 2019)  
Refmac : 5.8.0158  
CCP4 : 7.0.044 (Gargrove)  
Ideal geometry (proteins) : Engh & Huber (2001)  
Ideal geometry (DNA, RNA) : Parkinson et al. (1996)  
Validation Pipeline (wwPDB-VP) : 2.11

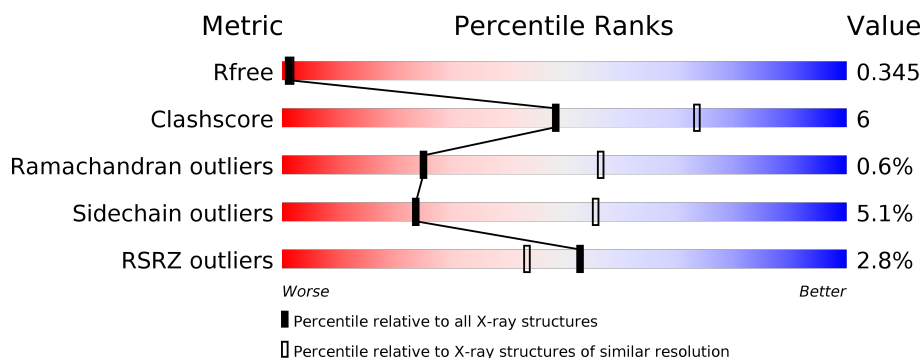
# 1 Overall quality at a glance

The following experimental techniques were used to determine the structure:

*X-RAY DIFFRACTION*

The reported resolution of this entry is 2.80 Å.

Percentile scores (ranging between 0-100) for global validation metrics of the entry are shown in the following graphic. The table shows the number of entries on which the scores are based.



Metric	Whole archive (#Entries)	Similar resolution (#Entries, resolution range(Å))
$R_{free}$	130704	3140 (2.80-2.80)
Clashscore	141614	3569 (2.80-2.80)
Ramachandran outliers	138981	3498 (2.80-2.80)
Sidechain outliers	138945	3500 (2.80-2.80)
RSRZ outliers	127900	3078 (2.80-2.80)

The table below summarises the geometric issues observed across the polymeric chains and their fit to the electron density. The red, orange, yellow and green segments on the lower bar indicate the fraction of residues that contain outliers for  $\geq 3$ , 2, 1 and 0 types of geometric quality criteria respectively. A grey segment represents the fraction of residues that are not modelled. The numeric value for each fraction is indicated below the corresponding segment, with a dot representing fractions  $\leq 5\%$ . The upper red bar (where present) indicates the fraction of residues that have poor fit to the electron density. The numeric value is given above the bar.

Mol	Chain	Length	Quality of chain
1	A	159	<div> <div>3%</div> <div>71%</div> <div>25%</div> <div>..</div> </div>
1	B	159	<div> <div>3%</div> <div>76%</div> <div>21%</div> <div>..</div> </div>

The following table lists non-polymeric compounds, carbohydrate monomers and non-standard residues in protein, DNA, RNA chains that are outliers for geometric or electron-density-fit criteria:

Mol	Type	Chain	Res	Chirality	Geometry	Clashes	Electron density
5	GOL	A	1162	-	-	-	X

## 2 Entry composition [i](#)

There are 6 unique types of molecules in this entry. The entry contains 2775 atoms, of which 0 are hydrogens and 0 are deuteriums.

In the tables below, the ZeroOcc column contains the number of atoms modelled with zero occupancy, the AltConf column contains the number of residues with at least one atom in alternate conformation and the Trace column contains the number of residues modelled with at most 2 atoms.

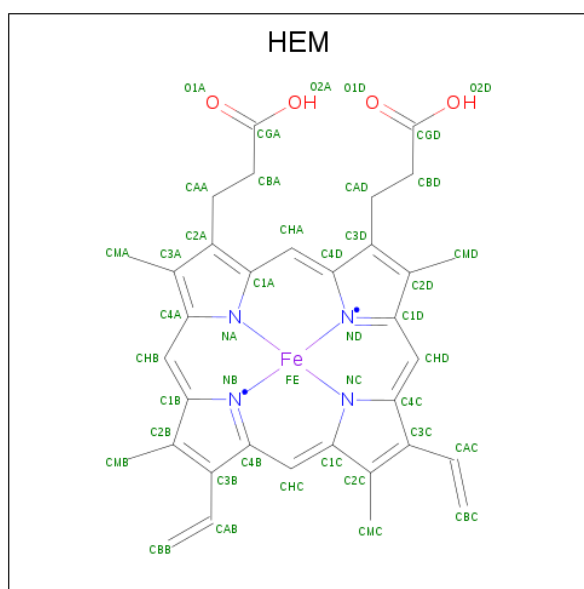
- Molecule 1 is a protein called GLOBIN-LIKE PROTEIN.

Mol	Chain	Residues	Atoms					ZeroOcc	AltConf	Trace
1	A	158	Total	C	N	O	S	69	0	0
			1294	822	225	240	7			
1	B	158	Total	C	N	O	S	55	0	0
			1294	822	225	240	7			

There are 2 discrepancies between the modelled and reference sequences:

Chain	Residue	Modelled	Actual	Comment	Reference
A	127	SER	CYS	engineered mutation	UNP P30627
B	127	SER	CYS	engineered mutation	UNP P30627

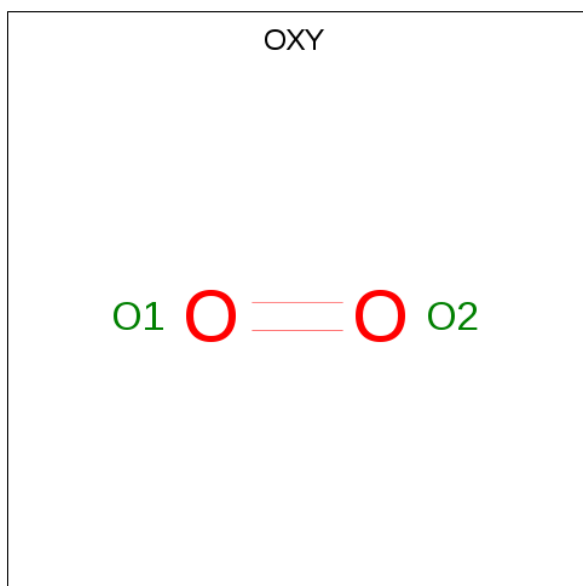
- Molecule 2 is PROTOPORPHYRIN IX CONTAINING FE (three-letter code: HEM) (formula:  $C_{34}H_{32}FeN_4O_4$ ).



*Continued from previous page...*

Mol	Chain	Residues	Atoms				ZeroOcc	AltConf
2	B	1	Total	C	Fe	N	O	
			43	34	1	4	4	
							0	0

- Molecule 3 is OXYGEN MOLECULE (three-letter code: OXY) (formula: O<sub>2</sub>).



Mol	Chain	Residues	Atoms		ZeroOcc	AltConf
3	A	1	Total	O		
			2	2	0	0
3	B	1	Total	O		
			2	2	0	0

- Molecule 4 is SULFATE ION (three-letter code: SO4) (formula: O<sub>4</sub>S).



Mol	Chain	Residues	Atoms			ZeroOcc	AltConf
4	A	1	Total	O	S	0	0
			5	4	1		
4	B	1	Total	O	S	0	0
			5	4	1		
4	B	1	Total	O	S	0	0
			5	4	1		

- Molecule 5 is GLYCEROL (three-letter code: GOL) (formula:  $C_3H_8O_3$ ).



Mol	Chain	Residues	Atoms			ZeroOcc	AltConf
5	A	1	Total	C	O	0	0
			6	3	3		

*Continued on next page...*

*Continued from previous page...*

Mol	Chain	Residues	Atoms			ZeroOcc	AltConf
5	A	1	Total	C	O	0	0
			6	3	3		
5	B	1	Total	C	O	0	0
			6	3	3		
5	B	1	Total	C	O	0	0
			6	3	3		
5	B	1	Total	C	O	0	0
			6	3	3		
5	B	1	Total	C	O	0	0
			6	3	3		

- Molecule 6 is water.

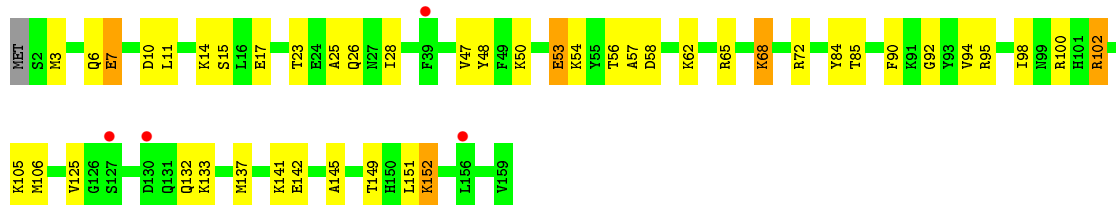
Mol	Chain	Residues	Atoms		ZeroOcc	AltConf
6	A	21	Total	O	0	0
			21	21		
6	B	25	Total	O	0	0
			25	25		

### 3 Residue-property plots [i](#)


These plots are drawn for all protein, RNA and DNA chains in the entry. The first graphic for a chain summarises the proportions of the various outlier classes displayed in the second graphic. The second graphic shows the sequence view annotated by issues in geometry and electron density. Residues are color-coded according to the number of geometric quality criteria for which they contain at least one outlier: green = 0, yellow = 1, orange = 2 and red = 3 or more. A red dot above a residue indicates a poor fit to the electron density ( $RSRZ > 2$ ). Stretches of 2 or more consecutive residues without any outlier are shown as a green connector. Residues present in the sample, but not in the model, are shown in grey.

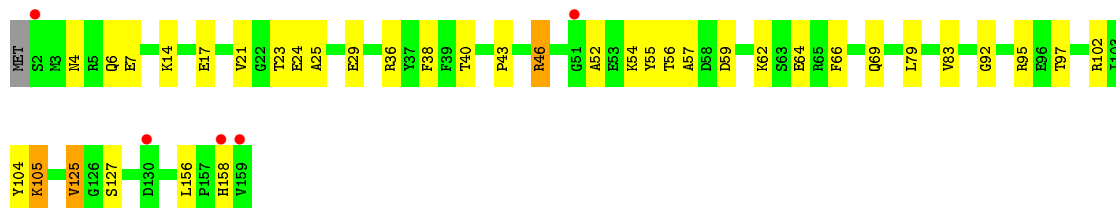
#### • Molecule 1: GLOBIN-LIKE PROTEIN

Chain A: 



#### • Molecule 1: GLOBIN-LIKE PROTEIN

Chain B: 





## 4 Data and refinement statistics

Property	Value	Source
Space group	P 31 2 1	Depositor
Cell constants a, b, c, $\alpha$ , $\beta$ , $\gamma$	77.68Å 77.68Å 145.64Å 90.00° 90.00° 120.00°	Depositor
Resolution (Å)	34.28 – 2.80 34.27 – 2.80	Depositor EDS
% Data completeness (in resolution range)	97.8 (34.28-2.80) 96.7 (34.27-2.80)	Depositor EDS
$R_{merge}$	0.06	Depositor
$R_{sym}$	(Not available)	Depositor
$\langle I/\sigma(I) \rangle$ <sup>1</sup>	6.11 (at 2.81Å)	Xtriage
Refinement program	REFMAC 5.2.0019	Depositor
R, $R_{free}$	0.269 , 0.319 0.296 , 0.345	Depositor DCC
$R_{free}$ test set	619 reflections (4.91%)	wwPDB-VP
Wilson B-factor (Å <sup>2</sup> )	51.4	Xtriage
Anisotropy	0.428	Xtriage
Bulk solvent $k_{sol}$ (e/Å <sup>3</sup> ), $B_{sol}$ (Å <sup>2</sup> )	0.33 , 35.1	EDS
L-test for twinning <sup>2</sup>	$\langle  L  \rangle = 0.50$ , $\langle L^2 \rangle = 0.33$	Xtriage
Estimated twinning fraction	0.040 for -h,-k,l	Xtriage
$F_o, F_c$ correlation	0.85	EDS
Total number of atoms	2775	wwPDB-VP
Average B, all atoms (Å <sup>2</sup> )	60.0	wwPDB-VP

Xtriage's analysis on translational NCS is as follows: *The largest off-origin peak in the Patterson function is 4.49% of the height of the origin peak. No significant pseudotranslation is detected.*

<sup>1</sup>Intensities estimated from amplitudes.

<sup>2</sup>Theoretical values of  $\langle |L| \rangle$ ,  $\langle L^2 \rangle$  for acentric reflections are 0.5, 0.333 respectively for untwinned datasets, and 0.375, 0.2 for perfectly twinned datasets.

## 5 Model quality

### 5.1 Standard geometry

Bond lengths and bond angles in the following residue types are not validated in this section: GOL, SO4, OXY, HEM

The Z score for a bond length (or angle) is the number of standard deviations the observed value is removed from the expected value. A bond length (or angle) with  $|Z| > 5$  is considered an outlier worth inspection. RMSZ is the root-mean-square of all Z scores of the bond lengths (or angles).

Mol	Chain	Bond lengths		Bond angles	
		RMSZ	$\# Z  > 5$	RMSZ	$\# Z  > 5$
1	A	1.24	16/1323 (1.2%)	1.04	16/1780 (0.9%)
1	B	1.01	7/1323 (0.5%)	0.87	10/1780 (0.6%)
All	All	1.13	23/2646 (0.9%)	0.96	26/3560 (0.7%)

Chiral center outliers are detected by calculating the chiral volume of a chiral center and verifying if the center is modelled as a planar moiety or with the opposite hand. A planarity outlier is detected by checking planarity of atoms in a peptide group, atoms in a mainchain group or atoms of a sidechain that are expected to be planar.

Mol	Chain	#Chirality outliers	#Planarity outliers
1	A	2	0
1	B	1	1
All	All	3	1

All (23) bond length outliers are listed below:

Mol	Chain	Res	Type	Atoms	Z	Observed(Å)	Ideal(Å)
1	A	62	LYS	CA-CB	21.82	2.02	1.53
1	B	24	GLU	CA-CB	-21.15	1.07	1.53
1	A	125	VAL	CA-CB	-14.82	1.23	1.54
1	B	125	VAL	CB-CG1	-13.17	1.25	1.52
1	A	26	GLN	CA-CB	-12.78	1.25	1.53
1	A	105	LYS	CD-CE	12.16	1.81	1.51
1	B	64	GLU	CB-CG	-11.51	1.30	1.52
1	A	102	ARG	CB-CG	-11.16	1.22	1.52
1	B	7	GLU	CA-CB	-9.89	1.32	1.53
1	A	149	THR	CB-CG2	9.32	1.83	1.52
1	A	25	ALA	CA-CB	-8.87	1.33	1.52
1	A	152	LYS	CA-CB	-8.36	1.35	1.53
1	B	54	LYS	CG-CD	-8.25	1.24	1.52
1	B	62	LYS	CB-CG	-8.06	1.30	1.52

*Continued on next page...*

*Continued from previous page...*

Mol	Chain	Res	Type	Atoms	Z	Observed(Å)	Ideal(Å)
1	B	23	THR	CB-CG2	8.05	1.78	1.52
1	A	11	LEU	C-N	7.87	1.52	1.34
1	A	28	ILE	CA-CB	-7.65	1.37	1.54
1	A	132	GLN	CD-NE2	6.82	1.50	1.32
1	A	100	ARG	CD-NE	6.53	1.57	1.46
1	A	57	ALA	CA-CB	-6.41	1.39	1.52
1	A	145	ALA	CA-CB	6.02	1.65	1.52
1	A	7	GLU	CG-CD	5.86	1.60	1.51
1	A	68	LYS	CA-CB	5.47	1.66	1.53

All (26) bond angle outliers are listed below:

Mol	Chain	Res	Type	Atoms	Z	Observed(°)	Ideal(°)
1	B	125	VAL	CG1-CB-CG2	17.17	138.37	110.90
1	A	152	LYS	N-CA-CB	13.44	134.79	110.60
1	A	23	THR	OG1-CB-CG2	-12.54	81.17	110.00
1	A	25	ALA	N-CA-CB	12.05	126.97	110.10
1	A	62	LYS	CB-CA-C	-11.92	86.55	110.40
1	A	149	THR	CA-CB-CG2	-10.56	97.62	112.40
1	A	149	THR	OG1-CB-CG2	-10.35	86.19	110.00
1	B	25	ALA	N-CA-CB	9.97	124.06	110.10
1	A	152	LYS	CA-CB-CG	8.44	131.97	113.40
1	A	125	VAL	CA-CB-CG2	-7.52	99.62	110.90
1	B	62	LYS	CA-CB-CG	7.23	129.31	113.40
1	B	57	ALA	CB-CA-C	7.13	120.79	110.10
1	B	7	GLU	N-CA-CB	6.95	123.11	110.60
1	B	24	GLU	CB-CA-C	6.88	124.17	110.40
1	A	151	LEU	CB-CG-CD2	6.86	122.66	111.00
1	B	127	SER	CB-CA-C	-6.71	97.36	110.10
1	A	57	ALA	N-CA-CB	6.61	119.35	110.10
1	B	24	GLU	N-CA-CB	6.44	122.19	110.60
1	B	24	GLU	CA-CB-CG	-5.88	100.47	113.40
1	B	23	THR	CA-CB-CG2	-5.84	104.22	112.40
1	A	125	VAL	CB-CA-C	5.75	122.33	111.40
1	A	25	ALA	CB-CA-C	5.43	118.24	110.10
1	A	151	LEU	CB-CG-CD1	-5.24	102.10	111.00
1	A	102	ARG	CA-CB-CG	5.13	124.69	113.40
1	A	125	VAL	N-CA-CB	5.04	122.59	111.50
1	A	151	LEU	CA-CB-CG	-5.00	103.79	115.30

All (3) chirality outliers are listed below:

Mol	Chain	Res	Type	Atom
1	A	25	ALA	CA
1	A	125	VAL	CA
1	B	24	GLU	CA

All (1) planarity outliers are listed below:

Mol	Chain	Res	Type	Group
1	B	102	ARG	Sidechain

## 5.2 Too-close contacts ⓘ

In the following table, the Non-H and H(model) columns list the number of non-hydrogen atoms and hydrogen atoms in the chain respectively. The H(added) column lists the number of hydrogen atoms added and optimized by MolProbity. The Clashes column lists the number of clashes within the asymmetric unit, whereas Symm-Clashes lists symmetry related clashes.

Mol	Chain	Non-H	H(model)	H(added)	Clashes	Symm-Clashes
1	A	1294	0	1253	12	1
1	B	1294	0	1253	15	0
2	A	43	0	30	2	0
2	B	43	0	30	2	0
3	A	2	0	0	0	0
3	B	2	0	0	0	0
4	A	5	0	0	0	0
4	B	10	0	0	0	0
5	A	12	0	16	3	0
5	B	24	0	32	2	1
6	A	21	0	0	0	0
6	B	25	0	0	0	0
All	All	2775	0	2614	30	1

The all-atom clashscore is defined as the number of clashes found per 1000 atoms (including hydrogen atoms). The all-atom clashscore for this structure is 6.

All (30) close contacts within the same asymmetric unit are listed below, sorted by their clash magnitude.

Atom-1	Atom-2	Interatomic distance (Å)	Clash overlap (Å)
5:A:1162:GOL:C1	5:A:1162:GOL:O1	1.71	1.38
1:A:47:VAL:HA	1:A:53:GLU:HG2	1.72	0.71
5:A:1162:GOL:C2	5:A:1162:GOL:O1	2.45	0.65
1:B:52:ALA:HA	1:B:55:TYR:CD1	2.32	0.65

*Continued on next page...*

Continued from previous page...

Atom-1	Atom-2	Interatomic distance (Å)	Clash overlap (Å)
1:A:65:ARG:HH21	2:A:160:HEM:CGA	2.20	0.55
1:B:79:LEU:O	1:B:83:VAL:HG22	2.08	0.54
1:A:94:VAL:O	1:A:98:ILE:HG12	2.09	0.53
1:B:156:LEU:O	1:B:158:HIS:HD2	1.92	0.52
1:B:92:GLY:HA2	1:B:95:ARG:NH2	2.25	0.52
1:A:48:TYR:CE1	1:A:106:MET:HA	2.45	0.51
5:A:1162:GOL:C1	5:A:1162:GOL:HO1	2.14	0.50
1:A:90:PHE:O	1:A:94:VAL:HG23	2.11	0.50
1:B:46:ARG:NH1	1:B:55:TYR:O	2.45	0.50
1:B:56:THR:H	1:B:59:ASP:HB2	1.75	0.50
1:A:14:LYS:O	1:A:17:GLU:HG2	2.13	0.49
1:B:4:ASN:HD21	1:B:6:GLN:HB3	1.79	0.48
1:B:104:TYR:OH	2:B:160:HEM:HAA1	2.14	0.48
1:A:72:ARG:HH11	2:A:160:HEM:HBD1	1.80	0.47
1:B:36:ARG:O	1:B:40:THR:OG1	2.30	0.47
1:B:43:PRO:HA	1:B:46:ARG:HD3	1.97	0.46
1:A:92:GLY:HA2	1:A:95:ARG:NH2	2.31	0.45
1:A:84:TYR:OH	1:A:142:GLU:HG3	2.17	0.45
1:B:14:LYS:O	1:B:17:GLU:HG2	2.17	0.45
1:A:133:LYS:O	1:A:137:MET:HG2	2.17	0.44
1:A:6:GLN:HA	1:A:85:THR:HG22	2.01	0.43
1:B:66:PHE:HA	1:B:69:GLN:HB3	2.01	0.43
1:A:3:MET:HG2	1:A:7:GLU:OE1	2.19	0.42
1:B:97:THR:HG21	2:B:160:HEM:HAC	2.00	0.41
1:B:4:ASN:HB2	5:B:1161:GOL:O2	2.20	0.41
1:B:105:LYS:NZ	5:B:1162:GOL:H12	2.35	0.41

All (1) symmetry-related close contacts are listed below. The label for Atom-2 includes the symmetry operator and encoded unit-cell translations to be applied.

Atom-1	Atom-2	Interatomic distance (Å)	Clash overlap (Å)
1:A:141:LYS:NZ	5:B:1162:GOL:O3[4_655]	1.85	0.35

## 5.3 Torsion angles [i](#)

### 5.3.1 Protein backbone [i](#)

In the following table, the Percentiles column shows the percent Ramachandran outliers of the chain as a percentile score with respect to all X-ray entries followed by that with respect to entries of similar resolution.

The Analysed column shows the number of residues for which the backbone conformation was analysed, and the total number of residues.

Mol	Chain	Analysed	Favoured	Allowed	Outliers	Percentiles	
1	A	156/159 (98%)	146 (94%)	9 (6%)	1 (1%)	25	56
1	B	156/159 (98%)	148 (95%)	7 (4%)	1 (1%)	25	56
All	All	312/318 (98%)	294 (94%)	16 (5%)	2 (1%)	25	56

All (2) Ramachandran outliers are listed below:

Mol	Chain	Res	Type
1	A	53	GLU
1	B	105	LYS

### 5.3.2 Protein sidechains ⓘ

In the following table, the Percentiles column shows the percent sidechain outliers of the chain as a percentile score with respect to all X-ray entries followed by that with respect to entries of similar resolution.

The Analysed column shows the number of residues for which the sidechain conformation was analysed, and the total number of residues.

Mol	Chain	Analysed	Rotameric	Outliers	Percentiles	
1	A	137/138 (99%)	128 (93%)	9 (7%)	16	44
1	B	137/138 (99%)	132 (96%)	5 (4%)	35	69
All	All	274/276 (99%)	260 (95%)	14 (5%)	24	55

All (14) residues with a non-rotameric sidechain are listed below:

Mol	Chain	Res	Type
1	A	10	ASP
1	A	15	SER
1	A	50	LYS
1	A	54	LYS
1	A	56	THR
1	A	58	ASP
1	A	68	LYS
1	A	102	ARG
1	A	152	LYS
1	B	21	VAL
1	B	29	GLU

*Continued on next page...*

*Continued from previous page...*

Mol	Chain	Res	Type
1	B	38	PHE
1	B	46	ARG
1	B	125	VAL

Some sidechains can be flipped to improve hydrogen bonding and reduce clashes. All (3) such sidechains are listed below:

Mol	Chain	Res	Type
1	A	27	ASN
1	B	4	ASN
1	B	158	HIS

### 5.3.3 RNA [i](#)

There are no RNA molecules in this entry.

## 5.4 Non-standard residues in protein, DNA, RNA chains [i](#)

There are no non-standard protein/DNA/RNA residues in this entry.

## 5.5 Carbohydrates [i](#)

There are no carbohydrates in this entry.

## 5.6 Ligand geometry [i](#)

13 ligands are modelled in this entry.

In the following table, the Counts columns list the number of bonds (or angles) for which Mogul statistics could be retrieved, the number of bonds (or angles) that are observed in the model and the number of bonds (or angles) that are defined in the Chemical Component Dictionary. The Link column lists molecule types, if any, to which the group is linked. The Z score for a bond length (or angle) is the number of standard deviations the observed value is removed from the expected value. A bond length (or angle) with  $|Z| > 2$  is considered an outlier worth inspection. RMSZ is the root-mean-square of all Z scores of the bond lengths (or angles).

Mol	Type	Chain	Res	Link	Bond lengths			Bond angles		
					Counts	RMSZ	$\# Z  > 2$	Counts	RMSZ	$\# Z  > 2$
5	GOL	B	1161	-	5,5,5	0.38	0	5,5,5	0.25	0
4	SO4	B	1163	-	4,4,4	0.94	0	6,6,6	0.29	0
5	GOL	B	1165	-	5,5,5	0.35	0	5,5,5	0.29	0

Mol	Type	Chain	Res	Link	Bond lengths			Bond angles		
					Counts	RMSZ	# Z  > 2	Counts	RMSZ	# Z  > 2
2	HEM	A	160	1,3	27,50,50	2.25	6 (22%)	17,82,82	1.49	3 (17%)
2	HEM	B	160	1,3	27,50,50	2.27	6 (22%)	17,82,82	1.16	1 (5%)
5	GOL	B	1164	-	5,5,5	0.69	0	5,5,5	0.53	0
5	GOL	A	1161	-	5,5,5	0.39	0	5,5,5	0.19	0
4	SO4	B	1160	-	4,4,4	0.12	0	6,6,6	0.12	0
5	GOL	A	1162	-	5,5,5	3.43	2 (40%)	5,5,5	1.37	1 (20%)
5	GOL	B	1162	-	5,5,5	0.35	0	5,5,5	0.33	0
4	SO4	A	1160	-	4,4,4	0.14	0	6,6,6	0.11	0
3	OXY	B	161	2	1,1,1	0.15	0	-		
3	OXY	A	161	2	1,1,1	0.14	0	-		

In the following table, the Chirals column lists the number of chiral outliers, the number of chiral centers analysed, the number of these observed in the model and the number defined in the Chemical Component Dictionary. Similar counts are reported in the Torsion and Rings columns. '-' means no outliers of that kind were identified.

Mol	Type	Chain	Res	Link	Chirals	Torsions	Rings
5	GOL	B	1161	-	-	0/4/4/4	-
5	GOL	B	1165	-	-	2/4/4/4	-
2	HEM	A	160	1,3	-	2/6/54/54	-
2	HEM	B	160	1,3	-	1/6/54/54	-
5	GOL	B	1164	-	-	4/4/4/4	-
5	GOL	A	1161	-	-	2/4/4/4	-
5	GOL	A	1162	-	-	2/4/4/4	-
5	GOL	B	1162	-	-	2/4/4/4	-

All (14) bond length outliers are listed below:

Mol	Chain	Res	Type	Atoms	Z	Observed(Å)	Ideal(Å)
5	A	1162	GOL	O1-C1	6.94	1.71	1.42
2	A	160	HEM	C3D-C2D	5.71	1.54	1.37
2	B	160	HEM	C3D-C2D	5.57	1.54	1.37
2	B	160	HEM	C3C-C2C	-4.97	1.33	1.40
2	B	160	HEM	C3B-C2B	-4.54	1.34	1.40
2	A	160	HEM	C3C-C2C	-4.40	1.34	1.40
2	A	160	HEM	C3B-C2B	-4.39	1.34	1.40
2	B	160	HEM	C3C-CAC	3.71	1.55	1.47
2	A	160	HEM	C3B-CAB	3.68	1.55	1.47
2	B	160	HEM	C3B-CAB	3.57	1.55	1.47
2	A	160	HEM	C3C-CAC	3.51	1.55	1.47

*Continued on next page...*



*Continued from previous page...*

Mol	Chain	Res	Type	Atoms	Z	Observed(Å)	Ideal(Å)
2	A	160	HEM	CAA-C2A	2.92	1.56	1.52
5	A	1162	GOL	O3-C3	2.88	1.54	1.42
2	B	160	HEM	CAA-C2A	2.27	1.55	1.52

All (5) bond angle outliers are listed below:

Mol	Chain	Res	Type	Atoms	Z	Observed(°)	Ideal(°)
5	A	1162	GOL	O1-C1-C2	-2.84	96.59	110.20
2	A	160	HEM	CMA-C3A-C4A	-2.46	124.68	128.46
2	A	160	HEM	C1D-C2D-C3D	-2.40	105.33	107.00
2	A	160	HEM	C4A-C3A-C2A	2.29	108.59	107.00
2	B	160	HEM	CMA-C3A-C4A	-2.01	125.38	128.46

There are no chirality outliers.

All (15) torsion outliers are listed below:

Mol	Chain	Res	Type	Atoms
2	A	160	HEM	C2D-C3D-CAD-CBD
2	A	160	HEM	C4D-C3D-CAD-CBD
2	B	160	HEM	C2A-CAA-CBA-CGA
5	B	1164	GOL	O1-C1-C2-C3
5	B	1164	GOL	C1-C2-C3-O3
5	A	1161	GOL	O1-C1-C2-C3
5	B	1162	GOL	C1-C2-C3-O3
5	B	1162	GOL	O2-C2-C3-O3
5	B	1165	GOL	C1-C2-C3-O3
5	B	1164	GOL	O1-C1-C2-O2
5	B	1164	GOL	O2-C2-C3-O3
5	A	1161	GOL	O1-C1-C2-O2
5	B	1165	GOL	O2-C2-C3-O3
5	A	1162	GOL	C1-C2-C3-O3
5	A	1162	GOL	O1-C1-C2-C3

There are no ring outliers.

5 monomers are involved in 10 short contacts:

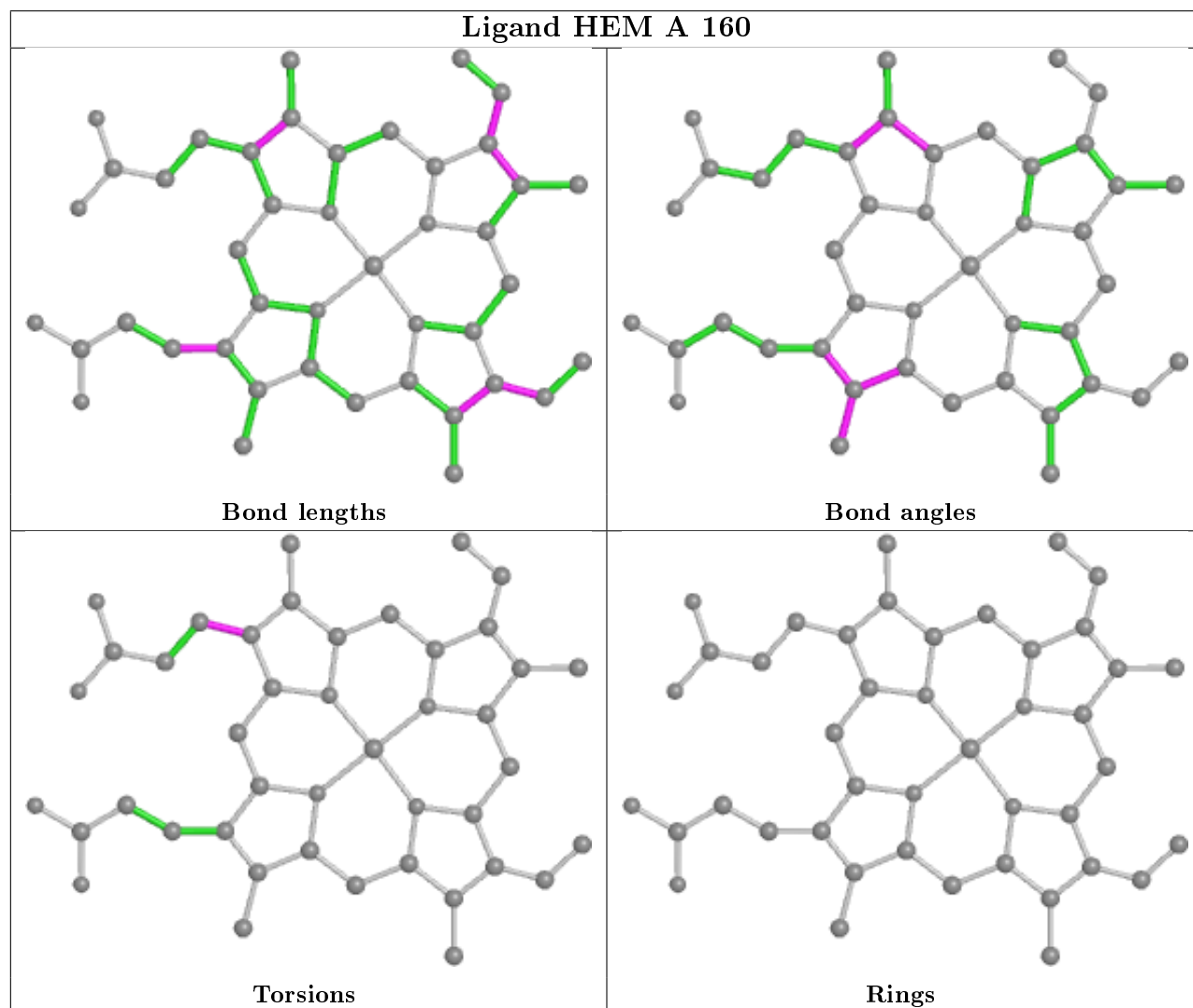
Mol	Chain	Res	Type	Clashes	Symm-Clashes
5	B	1161	GOL	1	0
2	A	160	HEM	2	0
2	B	160	HEM	2	0
5	A	1162	GOL	3	0

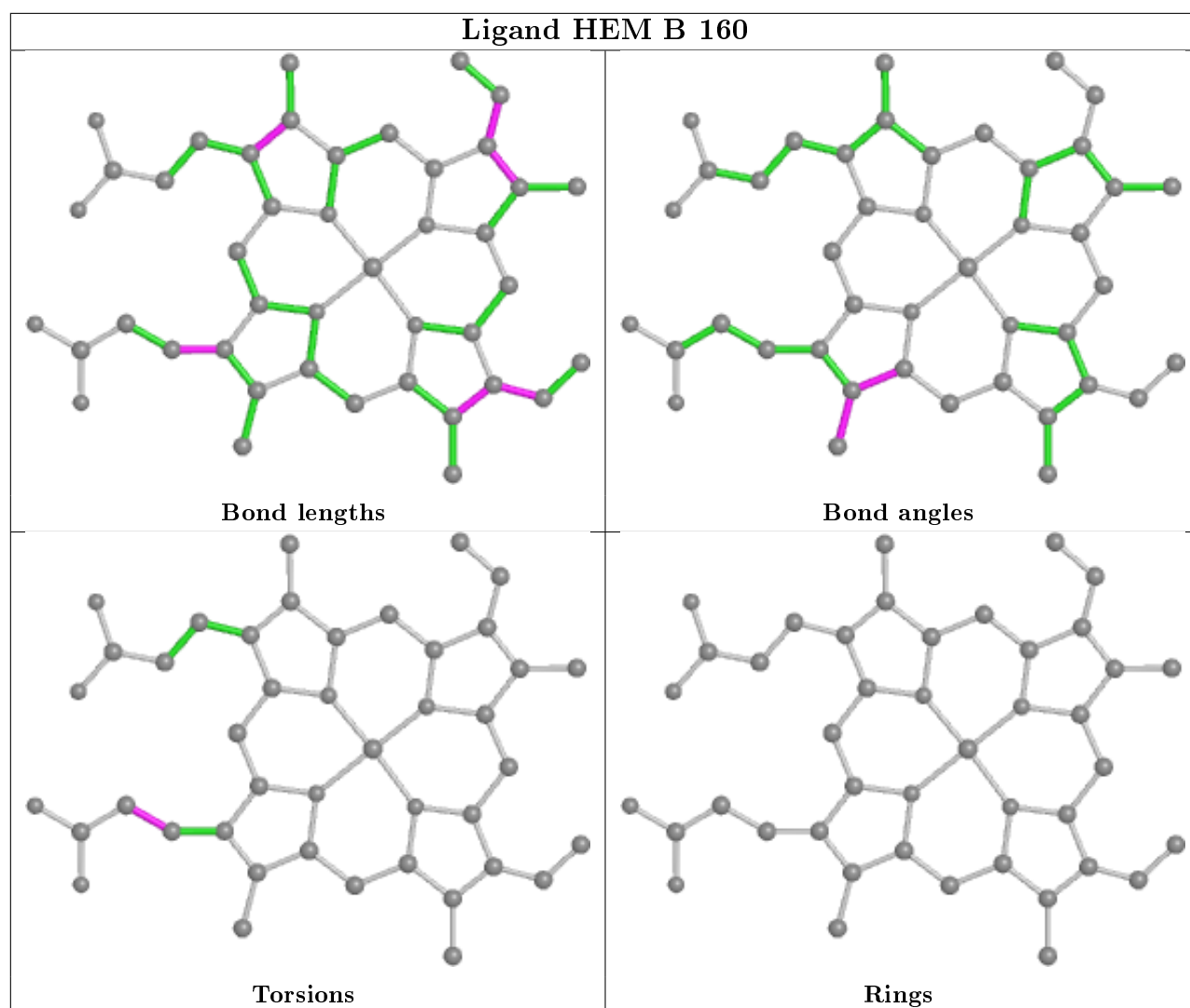
*Continued on next page...*

*Continued from previous page...*

Mol	Chain	Res	Type	Clashes	Symm-Clashes
5	B	1162	GOL	1	1

The following is a two-dimensional graphical depiction of Mogul quality analysis of bond lengths, bond angles, torsion angles, and ring geometry for all instances of the Ligand of Interest. In addition, ligands with molecular weight > 250 and outliers as shown on the validation Tables will also be included. For torsion angles, if less than 5% of the Mogul distribution of torsion angles is within 10 degrees of the torsion angle in question, then that torsion angle is considered an outlier. Any bond that is central to one or more torsion angles identified as an outlier by Mogul will be highlighted in the graph. For rings, the root-mean-square deviation (RMSD) between the ring in question and similar rings identified by Mogul is calculated over all ring torsion angles. If the average RMSD is greater than 60 degrees and the minimal RMSD between the ring in question and any Mogul-identified rings is also greater than 60 degrees, then that ring is considered an outlier. The outliers are highlighted in purple. The color gray indicates Mogul did not find sufficient equivalents in the CSD to analyse the geometry.





## 5.7 Other polymers [i](#)

There are no such residues in this entry.

## 5.8 Polymer linkage issues [i](#)

There are no chain breaks in this entry.

## 6 Fit of model and data [i](#)

### 6.1 Protein, DNA and RNA chains [i](#)

In the following table, the column labelled ‘#RSRZ> 2’ contains the number (and percentage) of RSRZ outliers, followed by percent RSRZ outliers for the chain as percentile scores relative to all X-ray entries and entries of similar resolution. The OWAB column contains the minimum, median, 95<sup>th</sup> percentile and maximum values of the occupancy-weighted average B-factor per residue. The column labelled ‘Q< 0.9’ lists the number of (and percentage) of residues with an average occupancy less than 0.9.

Mol	Chain	Analysed	<RSRZ>	#RSRZ>2	OWAB(Å <sup>2</sup> )	Q<0.9
1	A	158/159 (99%)	0.32	4 (2%) 57 47	44, 60, 74, 80	21 (13%)
1	B	158/159 (99%)	0.18	5 (3%) 47 37	44, 58, 72, 73	17 (10%)
All	All	316/318 (99%)	0.25	9 (2%) 53 43	44, 59, 73, 80	38 (12%)

All (9) RSRZ outliers are listed below:

Mol	Chain	Res	Type	RSRZ
1	B	2	SER	3.1
1	A	156	LEU	3.0
1	B	158	HIS	2.6
1	B	51	GLY	2.5
1	B	159	VAL	2.5
1	A	130	ASP	2.3
1	A	127	SER	2.3
1	A	39	PHE	2.1
1	B	130	ASP	2.0

### 6.2 Non-standard residues in protein, DNA, RNA chains [i](#)

There are no non-standard protein/DNA/RNA residues in this entry.

### 6.3 Carbohydrates [i](#)

There are no carbohydrates in this entry.

### 6.4 Ligands [i](#)

In the following table, the Atoms column lists the number of modelled atoms in the group and the number defined in the chemical component dictionary. The B-factors column lists the minimum,

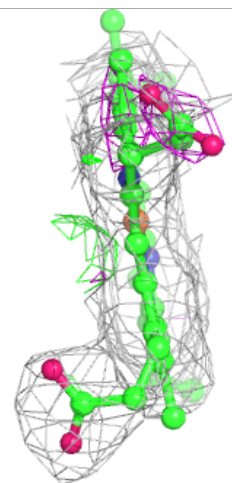
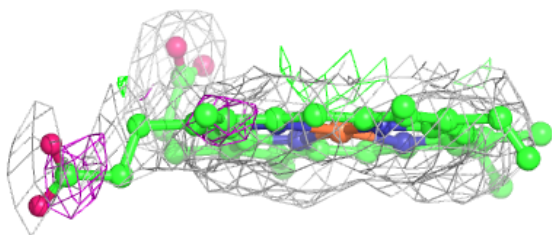
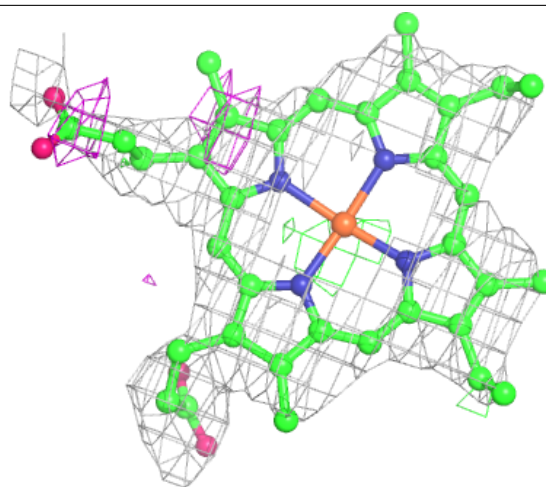
median, 95<sup>th</sup> percentile and maximum values of B factors of atoms in the group. The column labelled 'Q< 0.9' lists the number of atoms with occupancy less than 0.9.

Mol	Type	Chain	Res	Atoms	RSCC	RSR	B-factors(Å <sup>2</sup> )	Q<0.9
5	GOL	A	1162	6/6	0.48	0.88	52,52,52,52	0
5	GOL	B	1162	6/6	0.56	0.27	61,62,62,62	0
5	GOL	B	1164	6/6	0.72	0.27	76,77,77,77	0
5	GOL	B	1165	6/6	0.76	0.33	61,61,62,62	0
5	GOL	B	1161	6/6	0.85	0.23	70,70,70,71	0
5	GOL	A	1161	6/6	0.86	0.19	55,56,56,56	0
4	SO4	B	1163	5/5	0.88	0.46	61,61,61,61	0
4	SO4	A	1160	5/5	0.88	0.35	64,65,65,65	0
4	SO4	B	1160	5/5	0.92	0.23	62,62,62,62	0
2	HEM	A	160	43/43	0.92	0.23	51,52,58,63	0
3	OXY	B	161	2/2	0.92	0.32	64,64,64,65	0
2	HEM	B	160	43/43	0.93	0.22	48,53,59,60	0
3	OXY	A	161	2/2	0.98	0.20	65,65,65,66	0

The following is a graphical depiction of the model fit to experimental electron density of all instances of the Ligand of Interest. In addition, ligands with molecular weight > 250 and outliers as shown on the geometry validation Tables will also be included. Each fit is shown from different orientation to approximate a three-dimensional view.

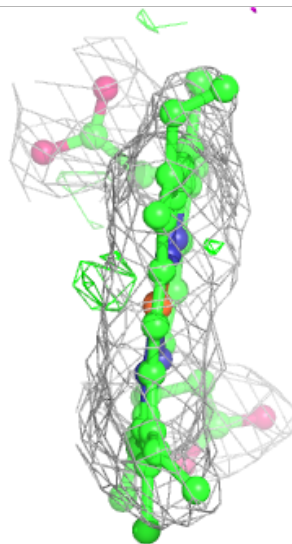
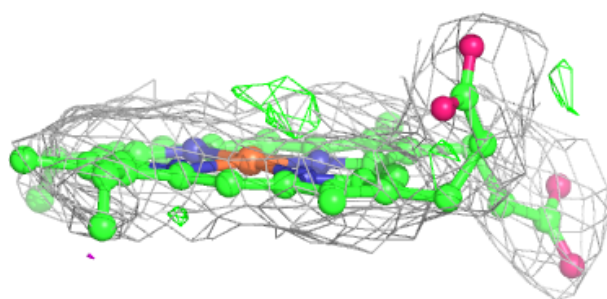
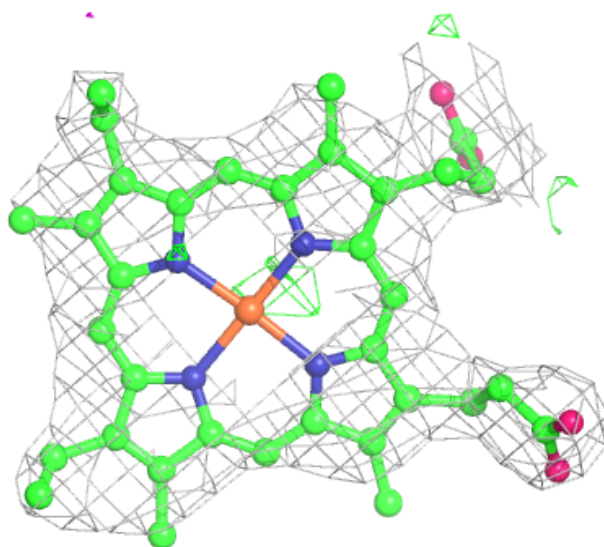
**Electron density around HEM A 160:**

$2mF_o-DF_c$  (at 0.7 rmsd) in gray  
 $mF_o-DF_c$  (at 3 rmsd) in purple (negative)  
and green (positive)



**Electron density around HEM B 160:**

$2mF_o-DF_c$  (at 0.7 rmsd) in gray  
 $mF_o-DF_c$  (at 3 rmsd) in purple (negative)  
and green (positive)



## 6.5 Other polymers [i](#)

There are no such residues in this entry.