



# Full wwPDB X-ray Structure Validation Report ⓘ

Aug 22, 2020 – 02:02 AM BST

PDB ID : 6WUW  
Title : Crystal structure of Human Serum Albumin complex with JMS-053  
Authors : Czub, M.P.; Cooper, D.R.; Shabalin, I.G.; Lazo, J.S.; Minor, W.; Center for Structural Genomics of Infectious Diseases (CSGID)  
Deposited on : 2020-05-05  
Resolution : 2.20 Å(reported)

This is a Full wwPDB X-ray Structure Validation Report for a publicly released PDB entry.

We welcome your comments at [validation@mail.wwpdb.org](mailto:validation@mail.wwpdb.org)

A user guide is available at

<https://www.wwpdb.org/validation/2017/XrayValidationReportHelp>

with specific help available everywhere you see the ⓘ symbol.

---

The following versions of software and data (see [references ⓘ](#)) were used in the production of this report:

MolProbity	:	4.02b-467
Mogul	:	1.8.5 (274361), CSD as541be (2020)
Xtriage (Phenix)	:	1.13
EDS	:	2.13.1
buster-report	:	1.1.7 (2018)
Percentile statistics	:	20191225.v01 (using entries in the PDB archive December 25th 2019)
Refmac	:	5.8.0158
CCP4	:	7.0.044 (Gargrove)
Ideal geometry (proteins)	:	Engh & Huber (2001)
Ideal geometry (DNA, RNA)	:	Parkinson et al. (1996)
Validation Pipeline (wwPDB-VP)	:	2.13.1

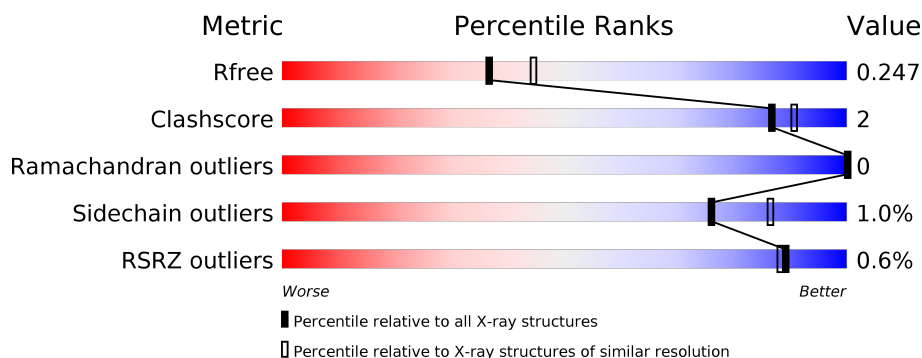
# 1 Overall quality at a glance

The following experimental techniques were used to determine the structure:

## *X-RAY DIFFRACTION*

The reported resolution of this entry is 2.20 Å.

Percentile scores (ranging between 0-100) for global validation metrics of the entry are shown in the following graphic. The table shows the number of entries on which the scores are based.



Metric	Whole archive (#Entries)	Similar resolution (#Entries, resolution range(Å))
$R_{free}$	130704	4898 (2.20-2.20)
Clashscore	141614	5594 (2.20-2.20)
Ramachandran outliers	138981	5503 (2.20-2.20)
Sidechain outliers	138945	5504 (2.20-2.20)
RSRZ outliers	127900	4800 (2.20-2.20)

The table below summarises the geometric issues observed across the polymeric chains and their fit to the electron density. The red, orange, yellow and green segments on the lower bar indicate the fraction of residues that contain outliers for  $\geq 3$ , 2, 1 and 0 types of geometric quality criteria respectively. A grey segment represents the fraction of residues that are not modelled. The numeric value for each fraction is indicated below the corresponding segment, with a dot representing fractions  $\leq 5\%$ . The upper red bar (where present) indicates the fraction of residues that have poor fit to the electron density. The numeric value is given above the bar.

Mol	Chain	Length	Quality of chain
1	A	585	<div> <div>%</div> <div> <div></div> <div>94%</div> <div>5%</div> </div> </div>
1	B	585	<div> <div>%</div> <div> <div></div> <div>94%</div> <div>5%</div> </div> </div>

The following table lists non-polymeric compounds, carbohydrate monomers and non-standard residues in protein, DNA, RNA chains that are outliers for geometric or electron-density-fit criteria:

Mol	Type	Chain	Res	Chirality	Geometry	Clashes	Electron density
6	UNL	B	807	-	-	X	-

## 2 Entry composition [i](#)

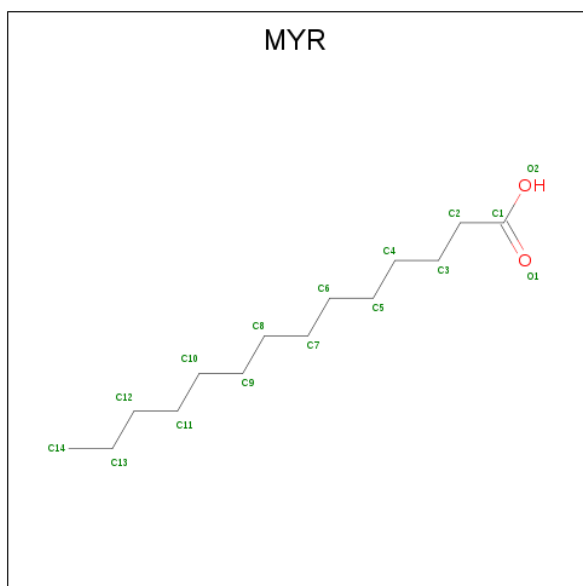
There are 8 unique types of molecules in this entry. The entry contains 9984 atoms, of which 0 are hydrogens and 0 are deuteriums.

In the tables below, the ZeroOcc column contains the number of atoms modelled with zero occupancy, the AltConf column contains the number of residues with at least one atom in alternate conformation and the Trace column contains the number of residues modelled with at most 2 atoms.

- Molecule 1 is a protein called Serum albumin.

Mol	Chain	Residues	Atoms					ZeroOcc	AltConf	Trace
1	A	582	Total	C	N	O	S	0	3	0
			4652	2941	787	883	41			
1	B	582	Total	C	N	O	S	0	2	0
			4644	2936	786	881	41			

- Molecule 2 is MYRISTIC ACID (three-letter code: MYR) (formula:  $C_{14}H_{28}O_2$ ).



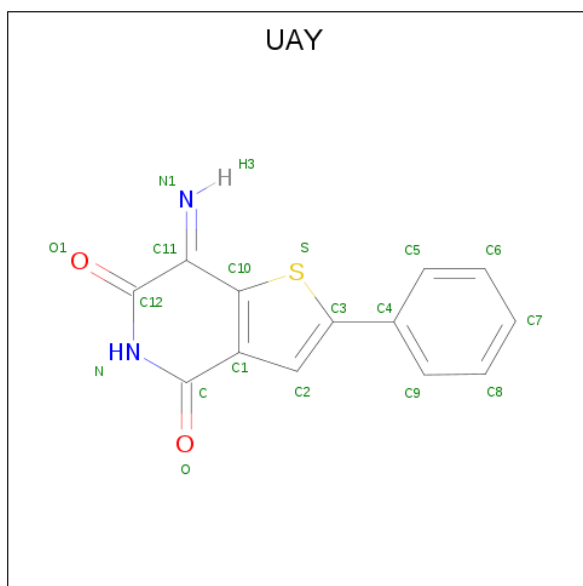
Mol	Chain	Residues	Atoms			ZeroOcc	AltConf
2	A	1	Total	C	O	0	0
			16	14	2		
2	A	1	Total	C	O	0	0
			12	10	2		
2	A	1	Total	C	O	0	0
			16	14	2		
2	A	1	Total	C	O	0	0
			16	14	2		

*Continued on next page...*

Continued from previous page...

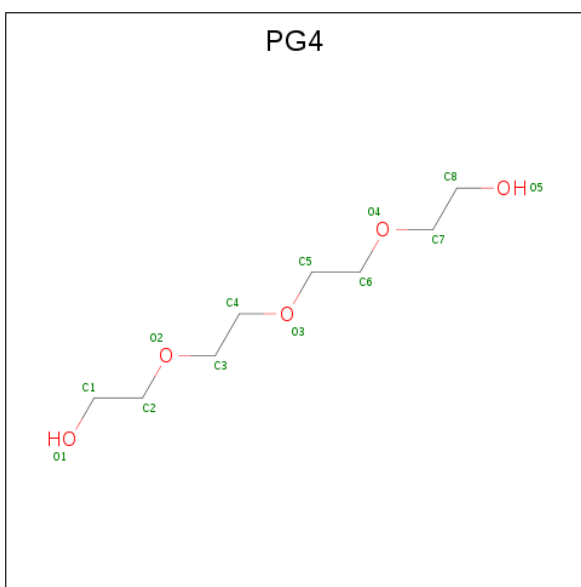
Mol	Chain	Residues	Atoms			ZeroOcc	AltConf
2	B	1	Total	C	O	0	0
			16	14	2		
2	B	1	Total	C	O	0	0
			16	14	2		
2	B	1	Total	C	O	0	0
			16	14	2		
2	B	1	Total	C	O	0	0
			11	9	2		
2	B	1	Total	C	O	0	0
			16	14	2		

- Molecule 3 is 7-imino-2-phenylthieno[3,2-c]pyridine-4,6(5H,7H)-dione (three-letter code: UAY) (formula: C<sub>13</sub>H<sub>8</sub>N<sub>2</sub>O<sub>2</sub>S) (labeled as "Ligand of Interest" by author).



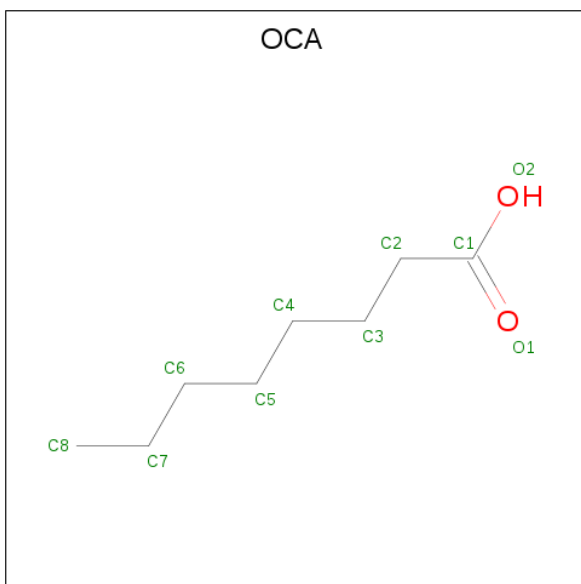
Mol	Chain	Residues	Atoms					ZeroOcc	AltConf
3	A	1	Total	C	N	O	S	0	0
			18	13	2	2	1		
3	B	1	Total	C	N	O	S	0	0
			18	13	2	2	1		

- Molecule 4 is TETRAETHYLENE GLYCOL (three-letter code: PG4) (formula: C<sub>8</sub>H<sub>18</sub>O<sub>5</sub>).



Mol	Chain	Residues	Atoms			ZeroOcc	AltConf
4	A	1	Total	C	O	0	0
			13	8	5		
4	B	1	Total	C	O	0	0
			13	8	5		

- Molecule 5 is OCTANOIC ACID (CAPRYLIC ACID) (three-letter code: OCA) (formula:  $C_8H_{16}O_2$ ).

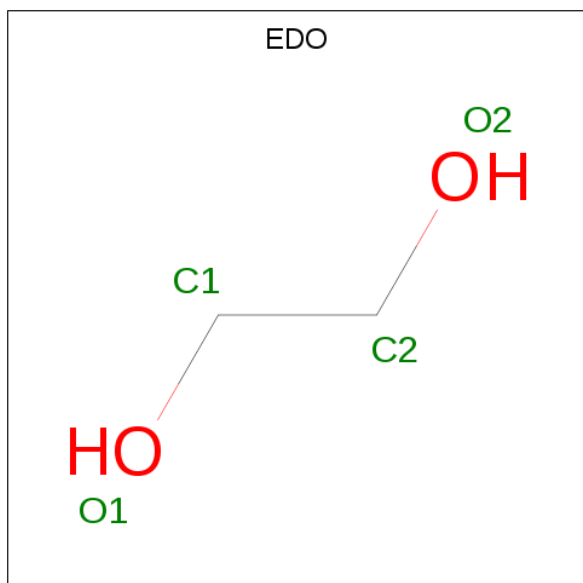


Mol	Chain	Residues	Atoms			ZeroOcc	AltConf
5	A	1	Total	C	O	0	0
			10	8	2		

- Molecule 6 is UNKNOWN LIGAND (three-letter code: UNL) (formula: ).

Mol	Chain	Residues	Atoms			ZeroOcc	AltConf
6	B	1	Total	C	O	0	0
			16	10	6		
6	A	1	Total	C	O	0	0
			16	10	6		

- Molecule 7 is 1,2-ETHANEDIOL (three-letter code: EDO) (formula: C<sub>2</sub>H<sub>6</sub>O<sub>2</sub>).



Mol	Chain	Residues	Atoms			ZeroOcc	AltConf
7	A	1	Total	C	O	0	0
			4	2	2		
7	A	1	Total	C	O	0	0
			4	2	2		
7	B	1	Total	C	O	0	0
			4	2	2		
7	B	1	Total	C	O	0	0
			4	2	2		

- Molecule 8 is water.

Mol	Chain	Residues	Atoms		ZeroOcc	AltConf
8	A	219	Total	O	0	0
			219	219		
8	B	214	Total	O	0	0
			214	214		



- Molecule 1: Serum albumin



## 4 Data and refinement statistics

Property	Value	Source
Space group	P 1	Depositor
Cell constants a, b, c, $\alpha$ , $\beta$ , $\gamma$	38.44Å 93.44Å 94.91Å 74.63° 89.63° 80.44°	Depositor
Resolution (Å)	46.01 – 2.20 45.96 – 2.19	Depositor EDS
% Data completeness (in resolution range)	84.3 (46.01-2.20) 83.4 (45.96-2.19)	Depositor EDS
$R_{merge}$	0.05	Depositor
$R_{sym}$	(Not available)	Depositor
$\langle I/\sigma(I) \rangle$ <sup>1</sup>	1.21 (at 2.18Å)	Xtriage
Refinement program	REFMAC 5.8.0258	Depositor
R, $R_{free}$	0.192 , 0.247 0.198 , 0.247	Depositor DCC
$R_{free}$ test set	2647 reflections (4.91%)	wwPDB-VP
Wilson B-factor (Å <sup>2</sup> )	27.2	Xtriage
Anisotropy	0.084	Xtriage
Bulk solvent $k_{sol}$ (e/Å <sup>3</sup> ), $B_{sol}$ (Å <sup>2</sup> )	0.29 , 33.7	EDS
L-test for twinning <sup>2</sup>	$\langle  L  \rangle = 0.50$ , $\langle L^2 \rangle = 0.33$	Xtriage
Estimated twinning fraction	0.136 for h,h-k,-l	Xtriage
$F_o, F_c$ correlation	0.94	EDS
Total number of atoms	9984	wwPDB-VP
Average B, all atoms (Å <sup>2</sup> )	44.0	wwPDB-VP

Xtriage's analysis on translational NCS is as follows: *The largest off-origin peak in the Patterson function is 5.76% of the height of the origin peak. No significant pseudotranslation is detected.*

<sup>1</sup>Intensities estimated from amplitudes.

<sup>2</sup>Theoretical values of  $\langle |L| \rangle$ ,  $\langle L^2 \rangle$  for acentric reflections are 0.5, 0.333 respectively for untwinned datasets, and 0.375, 0.2 for perfectly twinned datasets.

## 5 Model quality

### 5.1 Standard geometry

Bond lengths and bond angles in the following residue types are not validated in this section: UAY, OCA, MYR, EDO, PG4, UNL

The Z score for a bond length (or angle) is the number of standard deviations the observed value is removed from the expected value. A bond length (or angle) with  $|Z| > 5$  is considered an outlier worth inspection. RMSZ is the root-mean-square of all Z scores of the bond lengths (or angles).

Mol	Chain	Bond lengths		Bond angles	
		RMSZ	# Z  >5	RMSZ	# Z  >5
1	A	0.65	0/4756	0.68	0/6415
1	B	0.65	0/4743	0.68	0/6399
All	All	0.65	0/9499	0.68	0/12814

There are no bond length outliers.

There are no bond angle outliers.

There are no chirality outliers.

There are no planarity outliers.

### 5.2 Too-close contacts

In the following table, the Non-H and H(model) columns list the number of non-hydrogen atoms and hydrogen atoms in the chain respectively. The H(added) column lists the number of hydrogen atoms added and optimized by MolProbity. The Clashes column lists the number of clashes within the asymmetric unit, whereas Symm-Clashes lists symmetry related clashes.

Mol	Chain	Non-H	H(model)	H(added)	Clashes	Symm-Clashes
1	A	4652	0	4578	18	0
1	B	4644	0	4565	19	0
2	A	60	0	97	1	0
2	B	75	0	122	5	0
3	A	18	0	0	1	0
3	B	18	0	0	2	0
4	A	13	0	18	0	0
4	B	13	0	18	0	0
5	A	10	0	15	0	0
6	A	16	0	0	1	0
6	B	16	0	0	2	0

*Continued on next page...*

*Continued from previous page...*

Mol	Chain	Non-H	H(model)	H(added)	Clashes	Symm-Clashes
7	A	8	0	12	1	0
7	B	8	0	12	0	0
8	A	219	0	0	0	0
8	B	214	0	0	0	0
All	All	9984	0	9437	40	0

The all-atom clashscore is defined as the number of clashes found per 1000 atoms (including hydrogen atoms). The all-atom clashscore for this structure is 2.

All (40) close contacts within the same asymmetric unit are listed below, sorted by their clash magnitude.

Atom-1	Atom-2	Interatomic distance (Å)	Clash overlap (Å)
3:A:602:UAY:N1	6:A:606:UNL:OH2	2.20	0.74
1:A:378:LYS:HB2	1:A:379:PRO:HD3	1.74	0.69
3:B:803:UAY:N1	6:B:807:UNL:C22	2.62	0.62
1:A:199:LYS:HB3	1:A:242[B]:HIS:HE1	1.65	0.61
1:B:192:SER:O	1:B:196:GLN:HG2	2.02	0.59
1:B:19:PHE:CD2	2:B:804:MYR:H141	2.40	0.57
1:A:199:LYS:HB3	1:A:242[B]:HIS:CE1	2.41	0.56
1:B:417:GLN:HB3	1:B:469:VAL:HG22	1.91	0.53
1:A:452:TYR:O	1:A:455:VAL:HG12	2.10	0.52
1:A:214[A]:TRP:CD1	1:A:343:VAL:HG11	2.46	0.50
1:A:192:SER:O	1:A:196:GLN:HG3	2.12	0.50
1:B:348:ARG:HG3	1:B:482:VAL:HG13	1.93	0.49
1:B:214[A]:TRP:CD1	1:B:343:VAL:HG11	2.48	0.49
1:A:348:ARG:HG3	1:A:482:VAL:HG13	1.95	0.48
3:B:803:UAY:N1	6:B:807:UNL:C12	2.76	0.48
1:A:5:SER:HB3	1:A:57:GLU:HG3	1.96	0.47
1:A:5:SER:CB	1:A:57:GLU:HG3	2.45	0.47
1:A:151:ALA:HB3	1:A:152:PRO:HD3	1.96	0.46
1:B:151:ALA:HB3	1:B:152:PRO:HD3	1.96	0.46
1:A:560:LYS:C	1:A:560:LYS:HD3	2.35	0.46
1:B:131:GLU:OE1	1:B:162:LYS:NZ	2.48	0.45
1:A:169:CYS:HB3	7:A:608:EDO:H22	1.98	0.45
1:B:378:LYS:HB2	1:B:379:PRO:HD3	1.98	0.45
1:A:434:GLY:HA2	2:A:601:MYR:H112	1.99	0.45
1:A:485:ARG:HB3	1:A:486:PRO:HD3	1.99	0.45
1:B:481:LEU:O	1:B:481:LEU:HD13	2.17	0.45
1:B:485:ARG:HB3	1:B:486:PRO:HD3	1.99	0.45
1:A:395:PHE:CZ	1:A:435:SER:HA	2.53	0.44
1:A:461:CYS:O	1:A:465:GLU:HG2	2.17	0.44

*Continued on next page...*

Continued from previous page...

Atom-1	Atom-2	Interatomic distance (Å)	Clash overlap (Å)
1:B:480:SER:OG	2:B:805:MYR:C12	2.66	0.43
1:B:199:LYS:HB3	1:B:242[B]:HIS:CE1	2.53	0.43
1:B:251:LEU:HD23	2:B:804:MYR:H101	2.00	0.43
1:B:19:PHE:CE2	2:B:804:MYR:H141	2.54	0.42
1:B:525:LYS:HB3	2:B:810:MYR:H32	2.02	0.42
1:B:19:PHE:O	1:B:23:VAL:HG23	2.19	0.41
1:B:417:GLN:O	1:B:469:VAL:HG21	2.21	0.41
1:A:138:TYR:O	1:A:142:ILE:HG12	2.21	0.41
1:A:348:ARG:CG	1:A:482:VAL:HG13	2.52	0.40
1:B:395:PHE:CZ	1:B:435:SER:HA	2.56	0.40
1:B:138:TYR:O	1:B:142:ILE:HG12	2.22	0.40

There are no symmetry-related clashes.

## 5.3 Torsion angles [i](#)

### 5.3.1 Protein backbone [i](#)

In the following table, the Percentiles column shows the percent Ramachandran outliers of the chain as a percentile score with respect to all X-ray entries followed by that with respect to entries of similar resolution.

The Analysed column shows the number of residues for which the backbone conformation was analysed, and the total number of residues.

Mol	Chain	Analysed	Favoured	Allowed	Outliers	Percentiles	
1	A	583/585 (100%)	572 (98%)	11 (2%)	0	100	100
1	B	582/585 (100%)	571 (98%)	11 (2%)	0	100	100
All	All	1165/1170 (100%)	1143 (98%)	22 (2%)	0	100	100

There are no Ramachandran outliers to report.

### 5.3.2 Protein sidechains [i](#)

In the following table, the Percentiles column shows the percent sidechain outliers of the chain as a percentile score with respect to all X-ray entries followed by that with respect to entries of similar resolution.

The Analysed column shows the number of residues for which the sidechain conformation was analysed, and the total number of residues.

Mol	Chain	Analysed	Rotameric	Outliers	Percentiles	
1	A	512/511 (100%)	505 (99%)	7 (1%)	67	80
1	B	510/511 (100%)	506 (99%)	4 (1%)	81	90
All	All	1022/1022 (100%)	1011 (99%)	11 (1%)	76	85

All (11) residues with a non-rotameric sidechain are listed below:

Mol	Chain	Res	Type
1	A	57	GLU
1	A	84	TYR
1	A	242[A]	HIS
1	A	242[B]	HIS
1	A	286	LYS
1	A	334	TYR
1	A	467	THR
1	B	4	LYS
1	B	84	TYR
1	B	196	GLN
1	B	334	TYR

Some sidechains can be flipped to improve hydrogen bonding and reduce clashes. All (5) such sidechains are listed below:

Mol	Chain	Res	Type
1	A	109	ASN
1	A	429	ASN
1	A	459	GLN
1	B	429	ASN
1	B	459	GLN

### 5.3.3 RNA ⓘ

There are no RNA molecules in this entry.

## 5.4 Non-standard residues in protein, DNA, RNA chains ⓘ

There are no non-standard protein/DNA/RNA residues in this entry.

## 5.5 Carbohydrates ⓘ

There are no monosaccharides in this entry.

## 5.6 Ligand geometry

Of 20 ligands modelled in this entry, 2 are unknown - leaving 18 for Mogul analysis.

In the following table, the Counts columns list the number of bonds (or angles) for which Mogul statistics could be retrieved, the number of bonds (or angles) that are observed in the model and the number of bonds (or angles) that are defined in the Chemical Component Dictionary. The Link column lists molecule types, if any, to which the group is linked. The Z score for a bond length (or angle) is the number of standard deviations the observed value is removed from the expected value. A bond length (or angle) with  $|Z| > 2$  is considered an outlier worth inspection. RMSZ is the root-mean-square of all Z scores of the bond lengths (or angles).

Mol	Type	Chain	Res	Link	Bond lengths			Bond angles		
					Counts	RMSZ	# Z  > 2	Counts	RMSZ	# Z  > 2
3	UAY	A	602	-	14,20,20	0.51	0	16,29,29	0.43	0
3	UAY	B	803	-	14,20,20	0.54	0	16,29,29	0.51	0
7	EDO	A	607	-	3,3,3	0.06	0	2,2,2	0.23	0
2	MYR	B	810	-	12,15,15	0.11	0	11,15,15	0.11	0
2	MYR	B	809	-	7,10,15	0.18	0	6,10,15	0.15	0
5	OCA	A	604	-	6,9,9	0.21	0	5,9,9	0.14	0
7	EDO	A	608	-	3,3,3	0.06	0	2,2,2	0.26	0
4	PG4	B	806	-	12,12,12	0.20	0	11,11,11	0.10	0
2	MYR	B	804	-	12,15,15	0.19	0	11,15,15	0.14	0
7	EDO	B	808	-	3,3,3	0.07	0	2,2,2	0.23	0
2	MYR	B	805	-	12,15,15	0.16	0	11,15,15	0.10	0
2	MYR	A	609	-	12,15,15	0.14	0	11,15,15	0.11	0
2	MYR	B	802	-	12,15,15	0.16	0	11,15,15	0.09	0
2	MYR	A	605	-	8,11,15	0.14	0	7,11,15	0.11	0
4	PG4	A	603	-	12,12,12	0.19	0	11,11,11	0.10	0
2	MYR	A	601	-	12,15,15	0.13	0	11,15,15	0.08	0
2	MYR	A	610	-	12,15,15	0.12	0	11,15,15	0.09	0
7	EDO	B	801	-	3,3,3	0.07	0	2,2,2	0.24	0

In the following table, the Chirals column lists the number of chiral outliers, the number of chiral centers analysed, the number of these observed in the model and the number defined in the Chemical Component Dictionary. Similar counts are reported in the Torsion and Rings columns. '-' means no outliers of that kind were identified.

Mol	Type	Chain	Res	Link	Chirals	Torsions	Rings
3	UAY	A	602	-	-	0/4/20/20	0/3/3/3
3	UAY	B	803	-	-	0/4/20/20	0/3/3/3
7	EDO	A	607	-	-	1/1/1/1	-
2	MYR	B	810	-	-	5/11/13/13	-
2	MYR	B	809	-	-	2/6/8/13	-
5	OCA	A	604	-	-	1/5/7/7	-

*Continued on next page...*

*Continued from previous page...*

Mol	Type	Chain	Res	Link	Chirals	Torsions	Rings
7	EDO	A	608	-	-	0/1/1/1	-
4	PG4	B	806	-	-	3/10/10/10	-
2	MYR	B	804	-	-	1/11/13/13	-
7	EDO	B	808	-	-	0/1/1/1	-
2	MYR	B	805	-	-	2/11/13/13	-
2	MYR	A	609	-	-	3/11/13/13	-
2	MYR	B	802	-	-	5/11/13/13	-
2	MYR	A	605	-	-	3/7/9/13	-
4	PG4	A	603	-	-	4/10/10/10	-
2	MYR	A	601	-	-	5/11/13/13	-
2	MYR	A	610	-	-	4/11/13/13	-
7	EDO	B	801	-	-	0/1/1/1	-

There are no bond length outliers.

There are no bond angle outliers.

There are no chirality outliers.

All (39) torsion outliers are listed below:

Mol	Chain	Res	Type	Atoms
2	B	810	MYR	C1-C2-C3-C4
2	B	805	MYR	C1-C2-C3-C4
2	A	601	MYR	C1-C2-C3-C4
2	A	610	MYR	C1-C2-C3-C4
4	B	806	PG4	O2-C3-C4-O3
4	A	603	PG4	O2-C3-C4-O3
2	B	805	MYR	C11-C10-C9-C8
4	A	603	PG4	O3-C5-C6-O4
2	A	605	MYR	C6-C7-C8-C9
2	B	802	MYR	C5-C6-C7-C8
2	A	605	MYR	C3-C4-C5-C6
7	A	607	EDO	O1-C1-C2-O2
2	A	601	MYR	C9-C10-C11-C12
4	A	603	PG4	O1-C1-C2-O2
2	A	609	MYR	C3-C4-C5-C6
2	B	802	MYR	C11-C10-C9-C8
4	A	603	PG4	O4-C7-C8-O5
2	B	809	MYR	C5-C6-C7-C8
2	A	601	MYR	C3-C4-C5-C6
2	B	802	MYR	C7-C8-C9-C10

*Continued on next page...*

*Continued from previous page...*

Mol	Chain	Res	Type	Atoms
2	B	810	MYR	C11-C10-C9-C8
2	B	802	MYR	C9-C10-C11-C12
2	B	810	MYR	C3-C4-C5-C6
2	B	802	MYR	C10-C11-C12-C13
2	B	804	MYR	C3-C4-C5-C6
2	A	601	MYR	C11-C10-C9-C8
2	A	609	MYR	C10-C11-C12-C13
2	A	610	MYR	C7-C8-C9-C10
2	B	809	MYR	C6-C7-C8-C9
2	A	609	MYR	C7-C8-C9-C10
4	B	806	PG4	C3-C4-O3-C5
2	A	610	MYR	C11-C10-C9-C8
2	B	810	MYR	C2-C3-C4-C5
2	A	605	MYR	C7-C8-C9-C10
2	B	810	MYR	C9-C10-C11-C12
2	A	601	MYR	C5-C6-C7-C8
2	A	610	MYR	C10-C11-C12-C13
5	A	604	OCA	C4-C5-C6-C7
4	B	806	PG4	C6-C5-O3-C4

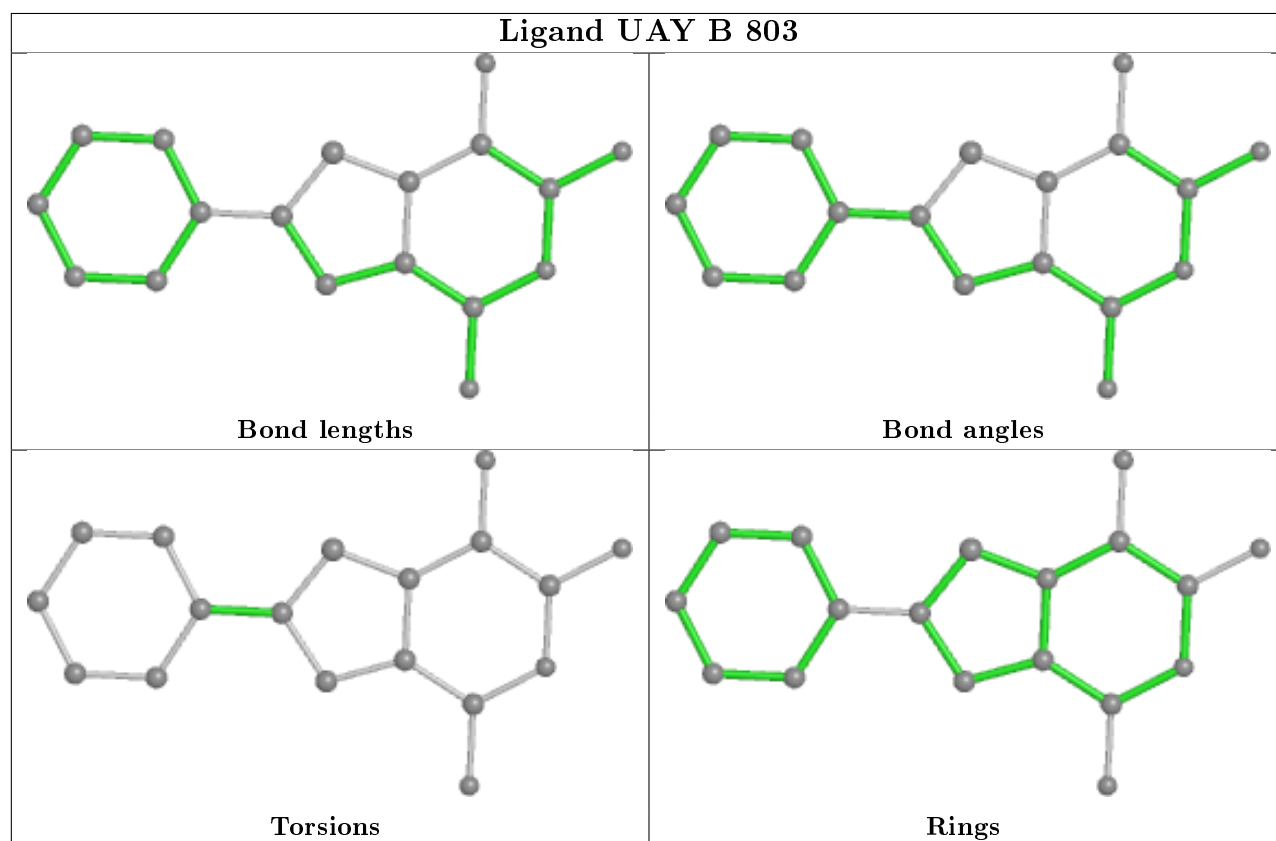
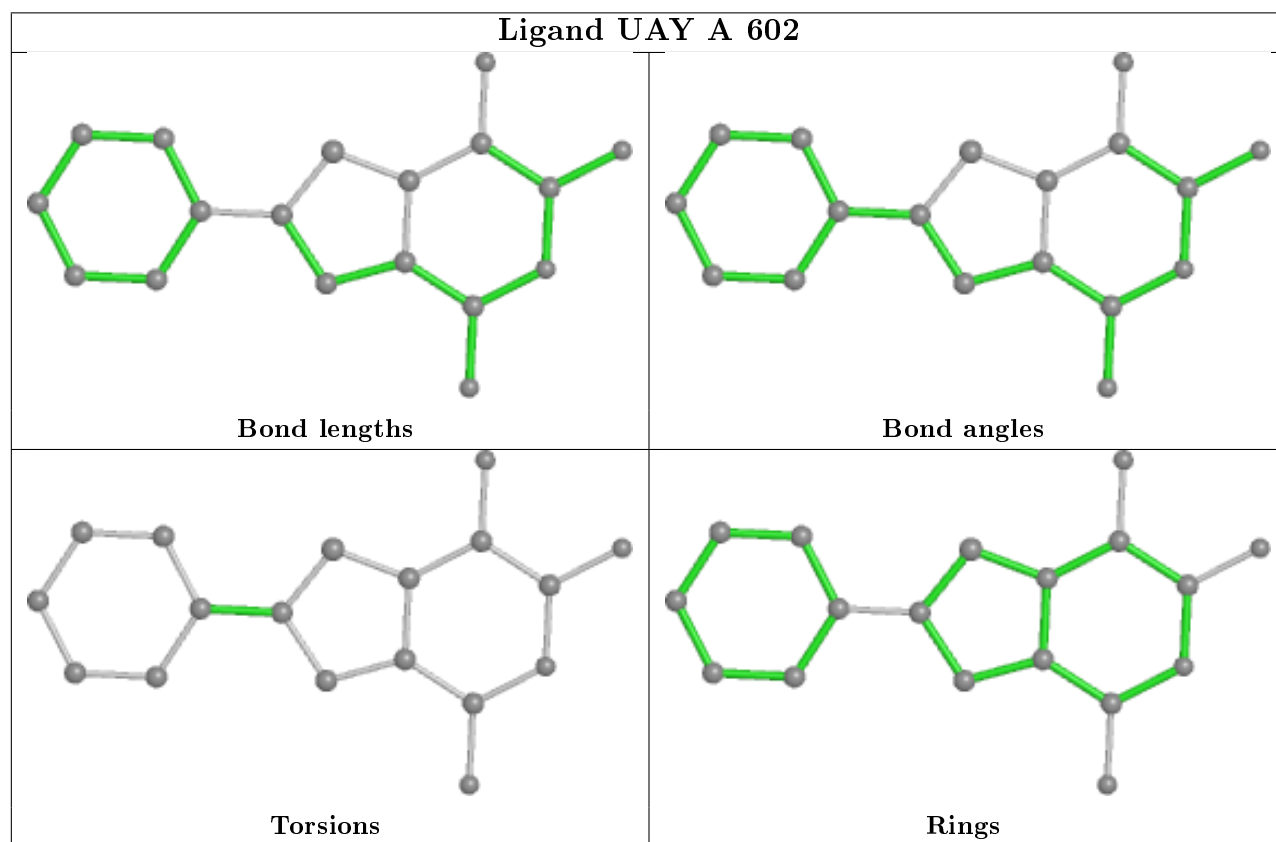
There are no ring outliers.

7 monomers are involved in 10 short contacts:

Mol	Chain	Res	Type	Clashes	Symm-Clashes
3	A	602	UAY	1	0
3	B	803	UAY	2	0
2	B	810	MYR	1	0
7	A	608	EDO	1	0
2	B	804	MYR	3	0
2	B	805	MYR	1	0
2	A	601	MYR	1	0

The following is a two-dimensional graphical depiction of Mogul quality analysis of bond lengths, bond angles, torsion angles, and ring geometry for all instances of the Ligand of Interest. In addition, ligands with molecular weight > 250 and outliers as shown on the validation Tables will also be included. For torsion angles, if less than 5% of the Mogul distribution of torsion angles is within 10 degrees of the torsion angle in question, then that torsion angle is considered an outlier. Any bond that is central to one or more torsion angles identified as an outlier by Mogul will be highlighted in the graph. For rings, the root-mean-square deviation (RMSD) between the ring in question and similar rings identified by Mogul is calculated over all ring torsion angles. If the average RMSD is greater than 60 degrees and the minimal RMSD between the ring in question and any Mogul-identified rings is also greater than 60 degrees, then that ring is considered an outlier.

The outliers are highlighted in purple. The color gray indicates Mogul did not find sufficient equivalents in the CSD to analyse the geometry.



## 5.7 Other polymers

There are no such residues in this entry.

## 5.8 Polymer linkage issues

There are no chain breaks in this entry.

## 6 Fit of model and data [i](#)

### 6.1 Protein, DNA and RNA chains [i](#)

In the following table, the column labelled ‘#RSRZ> 2’ contains the number (and percentage) of RSRZ outliers, followed by percent RSRZ outliers for the chain as percentile scores relative to all X-ray entries and entries of similar resolution. The OWAB column contains the minimum, median, 95<sup>th</sup> percentile and maximum values of the occupancy-weighted average B-factor per residue. The column labelled ‘Q< 0.9’ lists the number of (and percentage) of residues with an average occupancy less than 0.9.

Mol	Chain	Analysed	<RSRZ>	#RSRZ>2	OWAB(Å <sup>2</sup> )	Q<0.9
1	A	582/585 (99%)	-0.35	4 (0%) 87 86	14, 40, 85, 120	0
1	B	582/585 (99%)	-0.38	3 (0%) 91 90	14, 39, 81, 129	0
All	All	1164/1170 (99%)	-0.37	7 (0%) 89 88	14, 39, 83, 129	0

All (7) RSRZ outliers are listed below:

Mol	Chain	Res	Type	RSRZ
1	B	566	THR	3.2
1	A	559	CYS	2.6
1	B	568	PHE	2.6
1	A	560	LYS	2.6
1	A	566	THR	2.3
1	A	584	GLY	2.2
1	B	554	PHE	2.0

### 6.2 Non-standard residues in protein, DNA, RNA chains [i](#)

There are no non-standard protein/DNA/RNA residues in this entry.

### 6.3 Carbohydrates [i](#)

There are no monosaccharides in this entry.

### 6.4 Ligands [i](#)

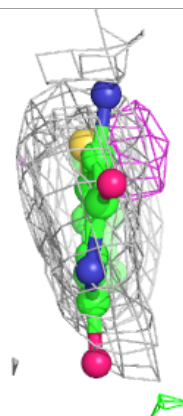
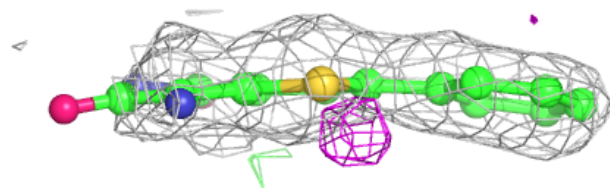
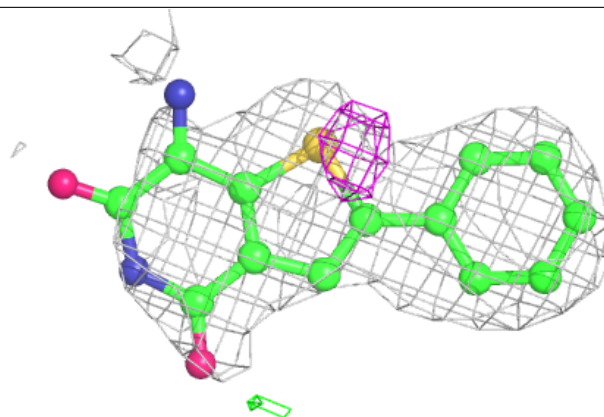
In the following table, the Atoms column lists the number of modelled atoms in the group and the number defined in the chemical component dictionary. The B-factors column lists the minimum, median, 95<sup>th</sup> percentile and maximum values of B factors of atoms in the group. The column labelled ‘Q< 0.9’ lists the number of atoms with occupancy less than 0.9.

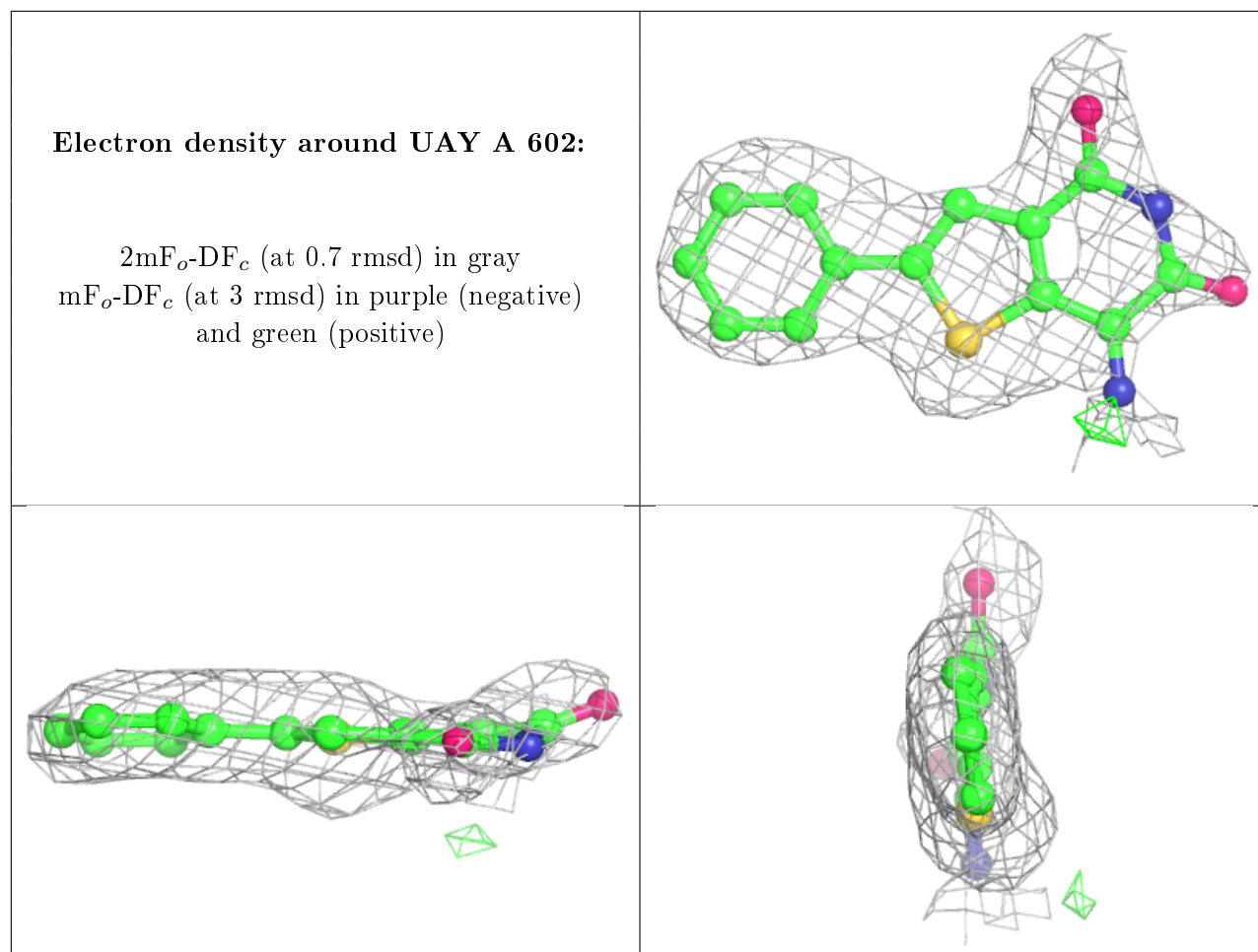
Mol	Type	Chain	Res	Atoms	RSCC	RSR	B-factors( $\text{\AA}^2$ )	Q<0.9
4	PG4	B	806	13/13	0.81	0.22	41,57,87,89	0
7	EDO	A	607	4/4	0.82	0.14	47,63,66,74	0
7	EDO	B	808	4/4	0.82	0.22	60,75,76,78	0
2	MYR	A	610	16/16	0.82	0.26	33,37,52,53	16
4	PG4	A	603	13/13	0.85	0.16	38,58,82,83	0
2	MYR	B	810	16/16	0.86	0.21	36,49,76,113	0
2	MYR	A	605	12/16	0.86	0.15	27,38,50,70	0
7	EDO	B	801	4/4	0.86	0.19	51,54,65,65	0
7	EDO	A	608	4/4	0.87	0.19	54,60,66,85	0
6	UNL	B	807	16/-	0.89	0.16	31,47,61,78	0
6	UNL	A	606	16/-	0.89	0.19	39,58,88,89	0
5	OCA	A	604	10/10	0.90	0.16	39,50,66,68	0
2	MYR	A	609	16/16	0.91	0.20	39,62,87,100	0
2	MYR	B	804	16/16	0.92	0.18	31,51,73,81	0
2	MYR	B	809	11/16	0.93	0.18	39,44,65,75	0
2	MYR	B	805	16/16	0.93	0.17	24,43,87,93	0
2	MYR	B	802	16/16	0.94	0.14	22,42,57,60	0
2	MYR	A	601	16/16	0.94	0.17	23,38,57,59	0
3	UAY	B	803	18/18	0.94	0.18	25,64,110,205	0
3	UAY	A	602	18/18	0.94	0.18	20,54,97,108	0

The following is a graphical depiction of the model fit to experimental electron density of all instances of the Ligand of Interest. In addition, ligands with molecular weight > 250 and outliers as shown on the geometry validation Tables will also be included. Each fit is shown from different orientation to approximate a three-dimensional view.

**Electron density around UAY B 803:**

$2mF_o - DF_c$  (at 0.7 rmsd) in gray  
 $mF_o - DF_c$  (at 3 rmsd) in purple (negative)  
and green (positive)





## 6.5 Other polymers [i](#)

There are no such residues in this entry.